

Reply to the reviewer comments

Manuscript se-2019-33

Dear Andrew,

Thank you for your positive assessment of our work and for your constructive comments. Also we are thankful for your thorough copy-editing of the manuscript. Please find hereafter our answers to your comments.

Best regards,
The authors

Reviewer comments

1. *It would be helpful to comment on which velocity models are in the “migrated” an “unmigrated” domains; for example, when lateral heterogeneity is present, velocities derived by standard stacking velocity analysis are not associated with the surface locations suitable for depth migration. Was this problem addressed when the stereotomography (ST) was applied? In contrast, the interval velocity model from FWI is in the depth domain suitable for migration.*

We agree that more clarification is required regarding this issue.

In principles we start our PSDM with two models derived from VA and FWI respectively. The model obtained with the classical time-domain VA is not only more inaccurate with increasing depth, but also (as you have mentioned) cannot handle properly the lateral velocity heterogeneities. Therefore the aim of application of ST in this case was to improve the limited accuracy of the velocity model built by VA for prestack depth imaging. ST does not rely on any assumption concerning the nature of the heterogeneities of the medium and therefore can handle properly the lateral velocity variations (e.g. the true medium can also generate diffractions, that will be exploited by ST if they can be picked).

On the other hand, the FWI model is built in the depth-domain since the beginning and therefore it might be better suitable for PSDM. However, the velocities in FWI model are derived from the different seismic data, which due to the wide-angle propagation regime may not have the same meaning than those found by MCS data (and required for PSDM) in particular in presence of anisotropy. Therefore, in this second case, we might see ST as a tool to optimize the PSDM results by correcting sub-horizontal velocities (as potentially found from OBS) into NMO velocities and to assess the influence of the inaccuracies generated by the different propagation regime or anisotropy. Indeed, this correction is heuristic (without implementing explicitly anisotropy) and may add unrealistic velocities in the model in the presence of migration artefacts or insufficient sampling by the scattering points (Manuscript-Figure 7).

To summarize, were are aware that VA and FWI models could be not accurate for PSDM of MCS data at such a geological scale (in the first case because of the lateral homogeneous assumption of classical time-domain VA; and in the second case because the OBS seismic data have been used to build the velocity model for PSDM of MCS data). Therefore, application of ST is yet another way to assess the accuracy of these velocity models for PSDM (if they are weakly modified, it means that they are accurate) and to optimize the migrated images.

We modify the manuscript accordingly in the *Introduction* section as well as section *2.2.4 MCS data - slope tomography*

2. *Some discussion on the accuracy of the velocity model is also warranted. With raybased tomography it is common practice to evaluate spatial resolution using checkerboard tests, or something equivalent, and this method can also be used with wide-angle FWI, though this might prove more challenging when stereo-tomography is included. The FWI+ST model has velocities of 8000 m/s, i.e. mantle, 1-2 km below the top of the oceanic crust, which is unrealistic. Given the reduced constraint at depth documented in Fig. 7c, I doubt the accuracy of the velocities, and their variation, within the igneous oceanic crust. Could this be due to fitting out-of-plane arrivals? These velocity anomalies are less pronounced in the FWI model (Fig. 8c versus 8d). Note that the purple color in Fig. 11 a does not appear on the colorbar. So is the colour scaling in Fig. 11 correct?*

We understand the importance of QC of the velocity models, and therefore we have spent significant efforts dedicated to validation of the FAT and FWI models in Górszczyk et al. (2017). The QC was based on: (i) qualitative and quantitative assessment of the real-vs-synthetic data fitting using Dynamic Image Warping (DIW, Hale, 2013); (ii) geophone response estimation (i.e. source wavelet estimation within the framework of source-receiver reciprocity); (iii) phase interpretation via ray-tracing; (iv) checkerboard tests of different scales.

To recall some of the results of our QC (exhaustive discussion is provided in Górszczyk et al. (2017)) in Figure 1 we present the accuracy of data-fitting between the observed and synthetic data, generated in FAT and FWI models. From the zoom-insets in Figure 1(ab) it is clear that FWI drives the interleaved wiggles, which are not aligned in case of data generated in the initial model (Figure 1(a)), into their correct position (Figure 1(b)). The same consistency is also visible for the amplitude trends (Figure 1(d)).

To quantitatively express this accuracy we utilize DIW. In Figure 2(ab) we present the estimated local time-shift panels for the single OBS as well as for the whole dataset. Histogram of shifts presented in the inset and Figure 2(c) shows that vast majority of the time-shifts fall between ± 30 ms which gives us an idea about the reconstruction accuracy.

Moreover, in the presented manuscript we further extensively validate both models against the separate dataset and the different velocity model-building (namely Slope Tomography) and depth imaging (namely Kirchhoff PSDM) techniques. In the section *2.2.1 OBS data* we encourage the reader to see the full validation of both models in Górszczyk et al. (2017).

For the ST+FWI model, indeed the local high velocities in the oceanic crust may not be relevant, and therefore we refer to them in the single paragraph we add to the section *2.2.4 MCS data - slope tomography*. The perturbations appear in the area which is partially covered the migration smiles - suggesting that the events were not migrated precisely. Since the depth is already significant the precision of PSDM is reduced. There are more geological investigations which suggest existence of the widely distributed faults in the subducting oceanic crust in the Nankai region (i.e. Tsuji et al., 2013). Since they are definitely the 3D structures, they might cause some problems for two-dimensional PSDM and ST. Therefore, the migration artefacts and the corresponding areas of over-saturated velocities can be associated with out-of-the-plane propagation.

Thank you also for your sharp-eye spotting the wrong colorbar which is now corrected.

3. *Can you mask out the unconstrained parts of the velocity models, e.g. the region of zero ray coverage in Fig. 3a.*

Thank you for this suggestions. We add the masks corresponding to the first-arrival ray-coverage in Manuscript-Figure 3.

4. *It is impressive that the velocity gradient increases in the igneous oceanic crust can be extracted from the velocity model. The increases at the top of the oceanic crust and the Moho seem reasonable. Is the thickness of oceanic crust implied here consistent with the known thickness of the*

incoming plate in this area?

Studies of (Kodaira et al., 2003) or Lallemand (2014) based on the FAT models suggests more exaggerated thickening of the crust (e.g. ranging from ~ 7 km to ~ 12 km in the areas considered as a subducted volcanic ridges; see Fig. 4 for details). In our case, we observe similar undulations of the crust. However, the thickening regions are not that much pronounced. One reason for that might be the fact our FWI model provides better focusing of the structure compared to the FAT model in Figure 4.

5. *It is suggested that the stepping within the Layer 2 gradient zone might be due to thrust faulting, but are these offsets more consistent with normal faulting with blocks dropped to the west; perhaps faulting created as the plate bends into the subduction zone?*

Thank you for this comment. Perhaps we were too much focussed on the results of Tsuji et al. (2009) and Tsuji et al. (2013) referring to the thrusting within oceanic crust. Indeed, the stress environment below the decollement surface generally could be under extension and normal faulting is commonly dominant. While the thrust faults are also possible, but may be more common in the earthquake zones where friction would be higher.

We correct the manuscript in the section *3.2.1 Structure of the subducting oceanic crust* accordingly.

6. *Page 12, line 6: I doubt that this velocity variation within the igneous crust is real. Even if it were I doubt that it could be simply attributed to volcanic ridges on the oceanic crust. Fracturing of the oceanic crust can reduced velocities where the incoming plate bends, but would likely be a more systematic, long-wavelength anomaly than shown here.*

As we have mentioned before, some over-estimation of velocity value intruded by ST can occur in the areas where PSDM encounters problems related to the out-of-the-plane wavefield propagation. However, less pronounced (but still noticeable) velocity variations in the oceanic crust are observed also in FWI model itself as well as the FAT model, suggesting the structural heterogeneity and/or deformation of the crust.

In Tokai area we can also expect the influence of the Izu Arc colliding with the central Japan as well as the initial thrusting stage around the Zenisu Ridge. Nevertheless, there have been previous studies which were tackling the subject of geometry of the subducting plate and they suggested existence of horst-like structures (volcanic ridges) underneath the accretionary prism. Therefore it can be accepted to assume the existence of such ridges in this region. Moreover, fluid migration can occur along the ridge-bounding faults causing alternation of the deep rocks (e.g. serpentinization) which may actually affect the crustal velocity structure. Such fluid rock interaction and velocity alteration have been reported at the outer ridge of the Tohoku margin (Korenaga, 2017).

We change the manuscript text in the section *3.2.1 Structure of the subducting oceanic crust* accordingly to underline this informations. We also change the background velocity model in Manuscript-Figure 11(a) for the FWI model, to avoid the confusions related to the overestimated velocities introduced by ST.

7. *Pager 13, line 7: It is probable that the igneous oceanic crust would have some deep water, hemipelagic sediment cover before it receives any sedimentary input from the land.*

To the best of our knowledge, the reality of the Tokai region is that the young Phillippine Sea Plate is subducting without hemipelagic sediment (but some volcanic rocks including volcanic

ash) on top of it, without forming deep trench but shallow trough instead.

References

- Górszczyk, A., Operto, S., and Malinowski, M. (2017). Toward a robust workflow for deep crustal imaging by FWI of OBS data: The eastern Nankai Trough revisited. *Journal of Geophysical Research: Solid Earth*, 122(6):4601–4630.
- Hale, D. (2013). Dynamic warping of seismic images. *Geophysics*, 78(2):S105–S115.
- Kodaira, S., Nakanishi, A., Park, J. O., Ito, A., Tsuru, T., and Kaneda, Y. (2003). Cyclic ridge subduction at an inter-plate locked zone off Central Japan. *Geophysical Research Letters*, 30(6):1339.
- Korenaga, J. (2017). On the extent of mantle hydration caused by plate bending. *Earth and Planetary Science Letters*, 457:1–9.
- Lallemand, S. (2014). Strain models within the forearc, arc and back-arc domains in the Izu (Japan) and Taiwan arc-continent collisional settings. *Journal of Asian Earth Sciences*, 86:1–11.
- Tsuji, T., Kodaira, S., Ashi, J., and Park, J.-O. (2013). Widely distributed thrust and strike-slip faults within subducting oceanic crust in the Nankai Trough off the Kii Peninsula, Japan. *Tectonophysics*, 600:52–62.
- Tsuji, T., Park, J.-O., Moore, G., Kodaira, S., Fukao, Y., Kuramoto, S., and Bangs, N. (2009). Intraoceanic thrusts in the Nankai Trough off the Kii Peninsula: Implications for intraplate earthquakes. *Geophysical Research Letters*, 36(6).

Figures

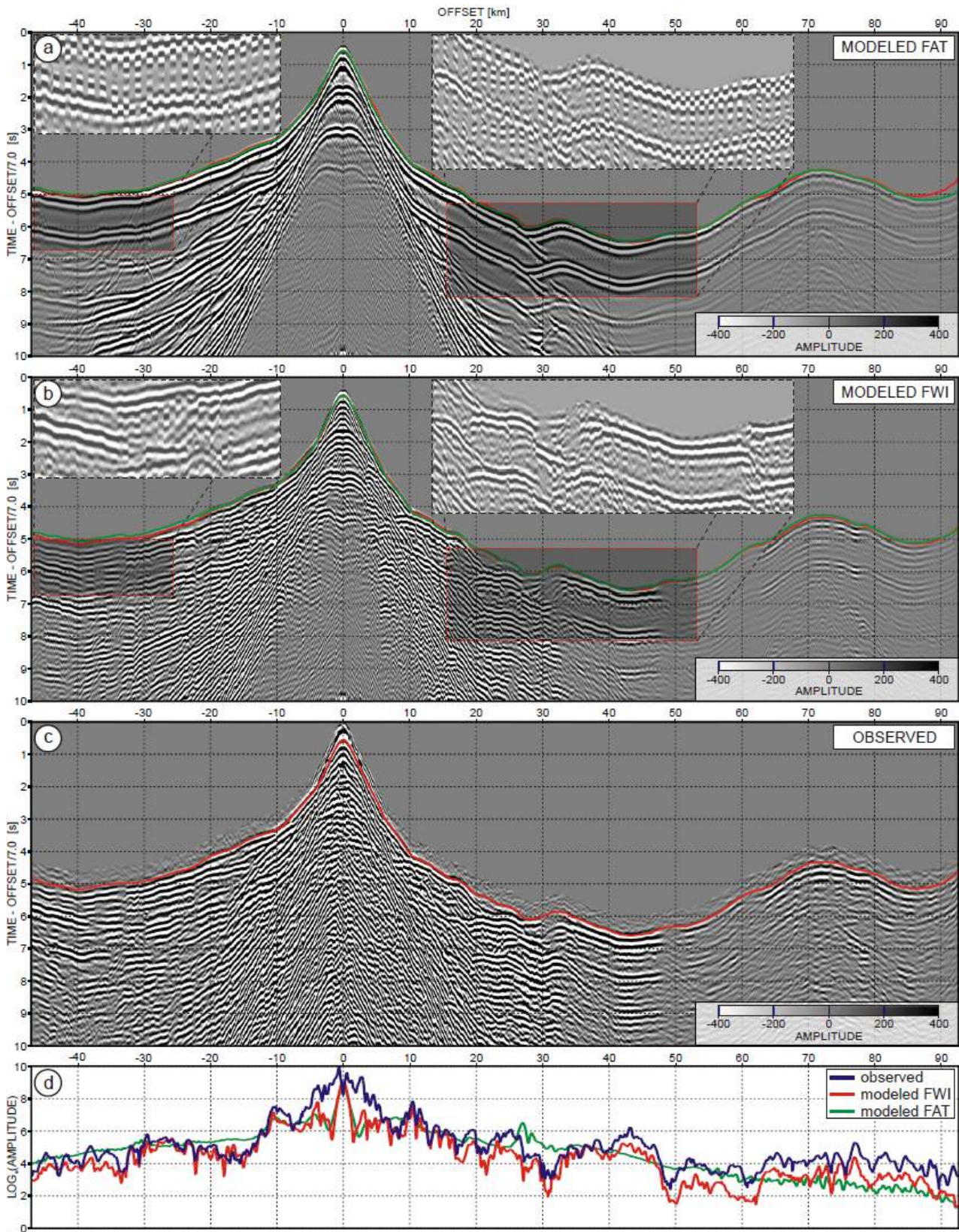


Figure 1: Comparison between the observed and modeled seismicograms. (a-b) Synthetic data computed using the (a) FAT and (b) FWI models. (c) Observed data. Zoom-panels show 5 interleaved traces from modeled and observed OBS gathers. The red/green curves (a-c) represent the picked/calculated first-arrival traveltimes respectively using the (a) FAT and (b) FWI models. The true-amplitude seismicograms in (a-c) are plotted using the same amplitude scale. (d) Comparison of the amplitude-versus-offset curves extracted from the seismicograms shown in (a-c). The amplitudes are extracted from a 400 ms window after the first arrivals. From Górszczyk et al. (2017)

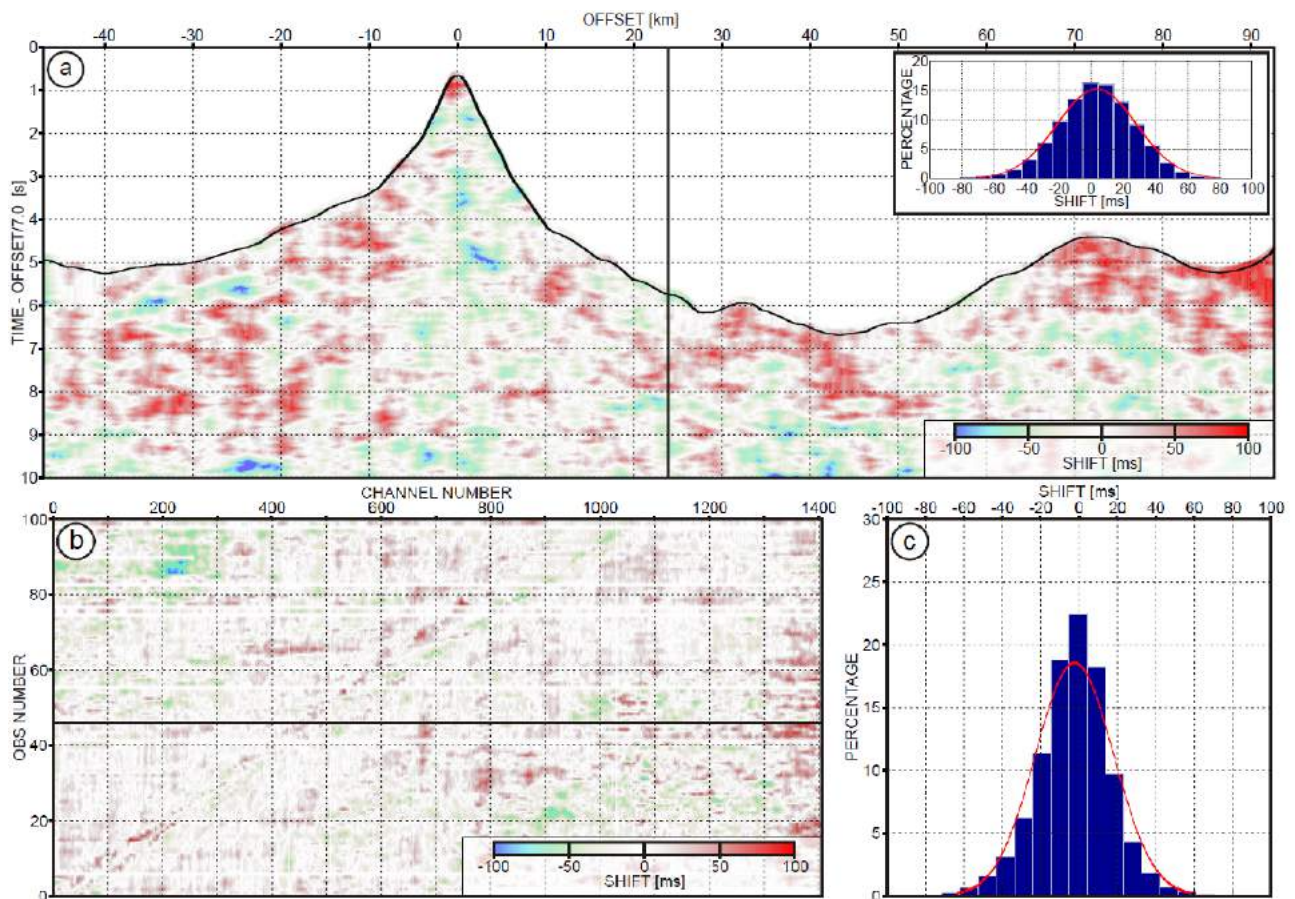


Figure 2: Illustration of DIW results. TOP: Map of the local shifts for all data samples in single OBS gather, with their histogram and fitted distribution shown in the inset. The black curve represents the samples collected 100 ms after the first arrivals. BOTTOM LEFT: Map of the local shifts for data samples located 100 ms after first arrival extracted from all OBS gathers. BOTTOM RIGHT: Histogram and fitted distribution of the shifts presented in BOTTOM LEFT panel. From Górszczyk et al. (2017)

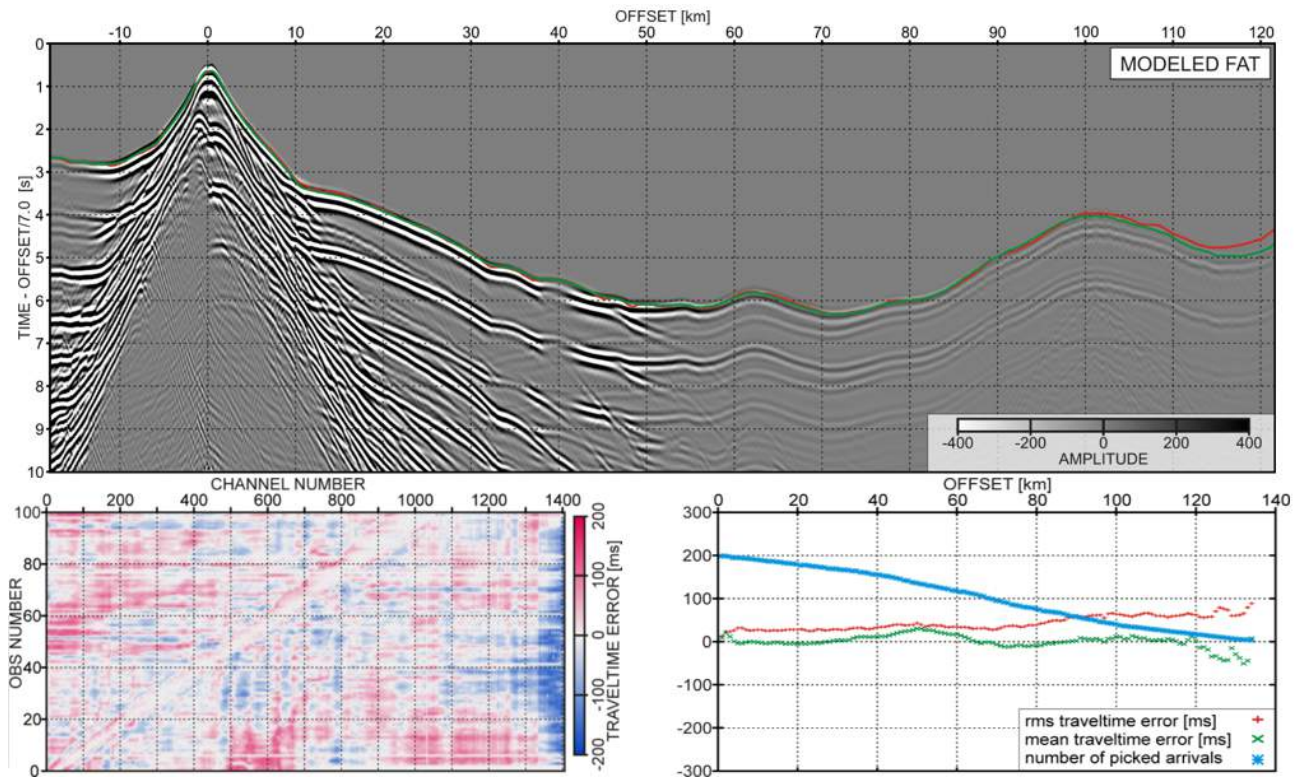


Figure 3: Assessment of the FAT model. TOP: Synthetic seismogram computed in the FAT model with superimposed picked (red line) and calculated (green line) traveltimes. BOTTOM LEFT: Traveltime difference map for all picked traces arranged in the source-vs-receiver coordinates. BOTTOM RIGHT: Mean traveltime difference and RMS (red + and green × respectively) calculated within 1-km offset intervals plotted against increasing offset. Cyan * represent number of picked traces at given offset. From Górszczyk et al. (2017)

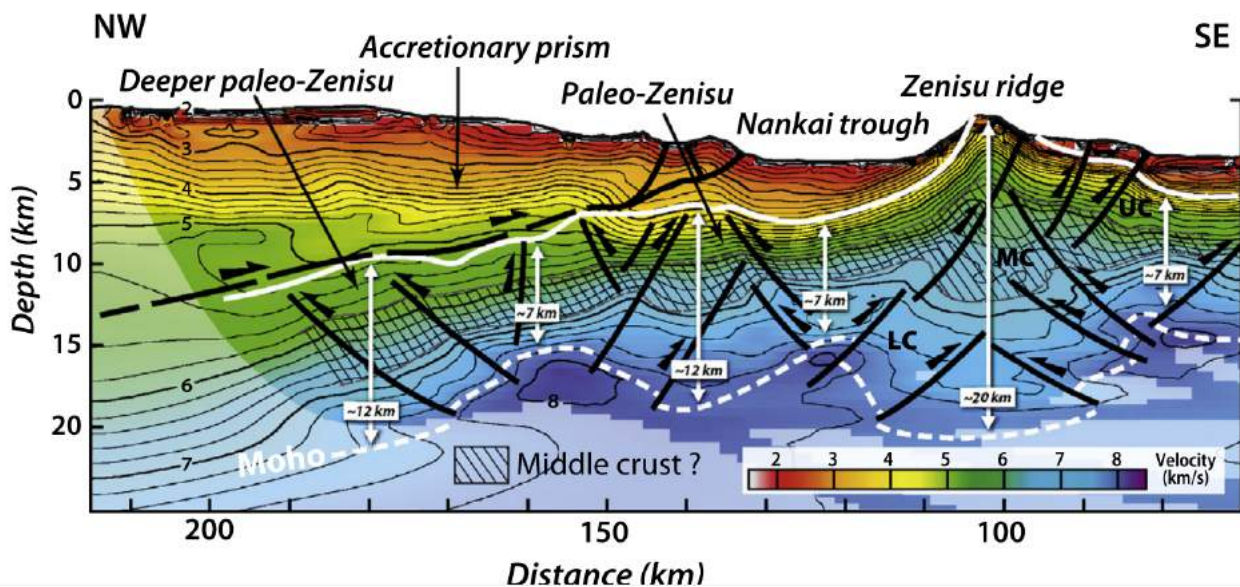


Figure 4: Figure 3 from Lallemand (2014) showing the structural interpretation of the nearby OBS profile in the Tokai area.

Reply to the reviewer comments

Manuscript se-2019-33

Dear Anke,

Thank you for your positive assessment of our work and for your constructive comments. Please find hereafter our answers to your comments.

Best regards,
The authors

Reviewer comments

1. *How true are the small scale structures in Fig. 3b?*

The Manuscript-Figure 3 in is intended to present the qualitative difference between the velocity model resolution that can be obtained with FAT and FWI. Indeed, considering the huge jump in terms of the recovered details the question about their reliability is reasonable.

Therefore in Górszczyk et al. (2017) we have spent significant efforts dedicated to validation of our FWI model. The QC was based on: (i) qualitative and quantitative assessment of the real-vs-synthetic data fitting using Dynamic Image Warping (DIW, Hale, 2013); (ii) geophone response estimation (i.e. source wavelet estimation within the framework of source-receiver reciprocity); (iii) phase interpretation via ray-tracing; (iv) checkerboard tests of different scales.

To recall some of the results of our QC (exhaustive discussion is provided in Górszczyk et al. (2017)) in Figure 1 we present the accuracy of data-fitting between the observed and synthetic data, generated in FAT and FWI models. From the zoom-insets in Figure 1(ab) it is clear that FWI drives the interleaved wiggles, which are not aligned in case of data generated in the initial model (Figure 1(a)), into their correct position (Figure 1(b)). The same consistency is also visible for the amplitude trends (Figure 1(d)).

To quantitatively express this accuracy we utilize DIW. In Figure 2(ab) we present the estimated local time-shift panels for the single OBS as well as for the whole dataset. Histogram of shifts presented in the inset and Figure 2(c) shows that vast majority of the time-shifts fall between ± 30 ms which gives us an idea about the reconstruction accuracy.

Moreover, in the presented manuscript we further extensively validate both FAT and FWI models against the separate dataset and the different velocity model-building (namely Slope Tomography) and depth imaging (namely Kirchhoff PSDM) techniques.

Combing all the information from the previous and current exercises we can conclude, that the fine structures in the FWI model are explained by the seismic data, and therefore are related to the underlying structure. While it is true that in the areas of poor illumination (flanks and the deepest parts of the model) the uncertainty of the reconstruction increases.

2. *A Fig. 3c showing plain MCS data or MCS data overlaid by the transparent FWI velocity field, could be useful for the reader.*

We understand the usefulness of such comparison, therefore we perform it directly in Manuscript-Figure 8. Also 'clear' PSMD section is presented in Manuscript-Figure 7a. Therefore, to avoid repetitions of the same content along the manuscript we prefer to keep the Manuscript-Figure 8 unchanged.

3. *For presenting seismic velocity fields gained by traveltime modelling it is common to show an image of a resolution test.*

We agree that the checkerboard resolution tests (although being pure inverse-crime tests) are quite commonly used for approximation of the structural correctness of the smooth tomographic model - especially when these model are a subject to further geological interpretation.

In our case, rather than focusing on building the FAT model which is as detailed as possible, we follow Ockham's razor rule - namely we build the model as smooth as possible, which explains the traveltimes within the error avoiding cycle-skipping criteria during FWI. This is because our aim was to introduce the structure in the final model *via* FWI and not FAT.

Of course, it does not mean that we skip QC of the FAT model. We focus on the validation of the FAT model through the traveltime- and seismic data-fitting. Indeed, due to the ultra-long offset, the traveltimes are long, leading to a large number of wavelengths to propagate. This in turn, causes higher possibility to accumulate the traveltime error and fall into the cycle-skipping from the very beginning of subsequent FWI (Pratt, 2008). In Górszczyk et al. (2017) we describe in details the procedure behind building the FAT model - based on the iterative, model driven refining of the picked first breaks.

To shed some light about the accuracy of traveltime-fitting provided by our FAT model, in Manuscript-Figure 2(b) we overlay on the OBS gather the picked and calculated first-arrival traveltimes. Here in Figure 3 we present the synthetic OBS gather generated in the FAT model with superimposed curves corresponding to picked (red) and calculated (green) first-break traveltimes. As can be seen both lines follows quite accurately the first arrival signal. Indeed at very far offset the accuracy decreases, as a result of lack of OBS coverage in this area - which was fairly pointed in one of your further comments. The two bottom panels show the overall distribution of traveltime mismatch, which in average is below 50 ms.

Therefore, we believe that with traveltime error at this level our smooth FAT model is robust - since we did not observe cycle-skipping problem during early stage FWI. Moreover, the PSDM results inferred from FAT model, provide additional benchmark confirming its robustness.

4. *The low velocity zone (LVZ) (in Fig. 3b) in the west (15-35 km profile distance and 15 km depth) does look like an artefact. How robust is the LVZ between 35-50 km profile distance at 10 km depth*

The first LVZ (15-35 km profile distance and 15 km depth) is most likely an artefact. It is located at the edge of the illumination from the landward side of the profile and due to the lack of constraint from the other side we are introducing some smearing-like anomalies. In the updated version of the Manuscript-Figure 3, we provide the first-arrival ray-coverage mask - which was also suggested by the Reviewer 1 - to better emphasize the illumination of the model space by the data. We also point out that the perturbations at the edge of the ray-coverage might be artificial.

The second LVZ (35-50 km profile distance at 10 km) is better sampled by the data and therefore we believe this is the geological feature. Its existence in this area causes quite complex propagation of the wavefield which is evident from the OBS gathers (for example complex package of arrivals between 20-35 km in Figure 1(c)).

Moreover in Figure 4 focusing of the PSDM section derived from FWI model (containing LVZ) and FAT model (no sharp LVZ) is better in this particular area. It is also worth to mention that existence of similar features were reported by in the western part of the Nankai Trough (Park et al., 2010; Kamei et al., 2012)

5. *Figure 3 shows that only 100 km of the profile is covered by OBS. This means we would expect a rather bad resolution at the profile with distances larger than 100 km. By that I would be careful with the low velocity zone found in this portion of the model.*

We agree with your statement. We avoid over-interpretation of the velocity model in the area located near to the the ends of the OBS profile - even-though the area around 100 km of the profile is still relatively well constrained through the undershooting of the wavefield propagating in the upper mantle. However, based on the results (e.g. Kodaira et al., 2003) (derived from the complementary OBS profile in the Tokai area), it is likely that another zone of lower velocities is located in in this region.

6. *How do the authors interpret the high positive velocity gradient directly on top of the subducting Moho? Underplating of the subducting plate? (Fig. 11b)*

In this case the change of the gradient shall be interpreted as a boundary itself (namely Moho) rather than some structure on top of Moho. The fact that it looks like a band of width of about 1-2 km is due to the decreasing resolution with increasing depth (in particular increasing velocity).

Considering V_p values of 8000 m/s, and taking into account that the highest effective frequency which we used during FWI was 8 Hz, the theoretical resolution (assuming omnidirectional coverage) is 500 m. In practice, due to the: (i) sub-horizontal propagation at this depth (scattering angles greater than 120 degrees); (ii) lack of clear short-spread PmP reflections; (iii) adaptive smoothing which is applied for regularization; (iv) and 2D reconstruction, this theoretical resolution has to be multiplied by at least factor of 2.

7. *Oceanic crust in general shows high lateral variation in composition and resulting seismic velocities. So, not necessarily a volcanic ridge is needed to explain the variations in the seismic velocity field at crustal level.*

We agree that the velocity variations in the subducting oceanic crust can have various origins e.g. different rock types combined with deformation. In Tokai area we can expect also the influence of the Izu Arc colliding with the central Japan as well as the initial thrusting stage around the Zenisu Ridge. We change the manuscript text accordingly to underline this information.

Nevertheless, there have been previous studies which were tackling the subject of geometry of the subducting plate and they suggested existence of horst-like structures (volcanic ridges) underneath the accretionary prism. Therefore it can be accepted to assume the existence of such ridges in this region. Moreover, fluid migration can occur along the ridge-bounding faults causing alternation of the deep rocks (e.g. serpentinization) which may actually affect the crustal velocity structure. Such fluid rock interaction and velocity alteration have been reported at the outer ridge of the Tohoku margin (Korenaga, 2017).

8. *In the section 3.2.4 "Backstop area" the authors state that they cannot put their results into the context with geologic studies. However, I think this section need to have a comparison to the*

findings of the original studies and their interpretation.

You are right that the results of our imaging can potentially bring new insight into the structure and evolution of the backstop in the Tokai segment. In case of geological interpretation, (for now) we are trying to avoid too much of speculations, which could distract the readers' attention from the main message of the paper, being more methodological in nature. We believe that to impose valid interpretation of the complex backstop area in this region we need to combine more data - coming not only from the field of seismic imaging (even-though reprocessing of the nearby OBS profile using FWI is now one of the ongoing works).

As we mentioned, the backstop in the Tokai segment is most likely the ancient accretionary prism covered by the sediments coming from the overriding plate, i.e. fore-arc basin. No active deformation can be clearly identified in this area anymore - although the imprints of complex deformations are quite strong (the deformation is still active in the frontal area, (see Yamada et al., 2014)). In the more central part of the Nankai area, the Kumano fore-arc basin is such a typical example and the underlying old accretionary prism which is not actively deforming (Shiraishi et al., 2019).

References

- Górszczyk, A., Operto, S., and Malinowski, M. (2017). Toward a robust workflow for deep crustal imaging by FWI of OBS data: The eastern Nankai Trough revisited. *Journal of Geophysical Research: Solid Earth*, 122(6):4601–4630.
- Hale, D. (2013). Dynamic warping of seismic images. *Geophysics*, 78(2):S105–S115.
- Kamei, R., Pratt, R. G., and Tsuji, T. (2012). Waveform tomography imaging of a megasplay fault system in the seismogenic Nankai subduction zone. *Earth and Planetary Science Letters*, 317–318:343–353.
- Kodaira, S., Nakanishi, A., Park, J. O., Ito, A., Tsuru, T., and Kaneda, Y. (2003). Cyclic ridge subduction at an inter-plate locked zone off Central Japan. *Geophysical Research Letters*, 30(6):1339.
- Korenaga, J. (2017). On the extent of mantle hydration caused by plate bending. *Earth and Planetary Science Letters*, 457:1–9.
- Park, J. O., Fujie, G., Wijerathne, L., Hori, T., Kodaira, S., Fukao, Y., Moore, G. F., Bangs, N. L., Kuramoto, S., and Taira, A. (2010). A low-velocity zone with weak reflectivity along the Nankai subduction zone. *Geology*, 38(3):283–286.
- Pratt, R. G. (2008). Waveform tomography - successes, cautionary tales, and future directions. In *Presented at the 70th Annual EAGE Conference & Exhibition, Roma*, pages WO11 – Full-Waveform Inversion: current status and perspectives.
- Shiraishi, K., Moore, G. F., Yamada, Y., Kinoshita, M., Sanada, Y., and Kimura, G. (2019). Seismogenic zone structures revealed by improved 3d seismic images in the Nankai Trough off Kumano. *Geochemistry, Geophysics, Geosystems*.
- Yamada, Y., Baba, K., Miyakawa, A., and Matsuoka, T. (2014). Granular experiments of thrust wedges: Insights relevant to methane hydrate exploration at the Nankai accretionary prism. *Marine and Petroleum Geology*, 51:34–48.

Figures

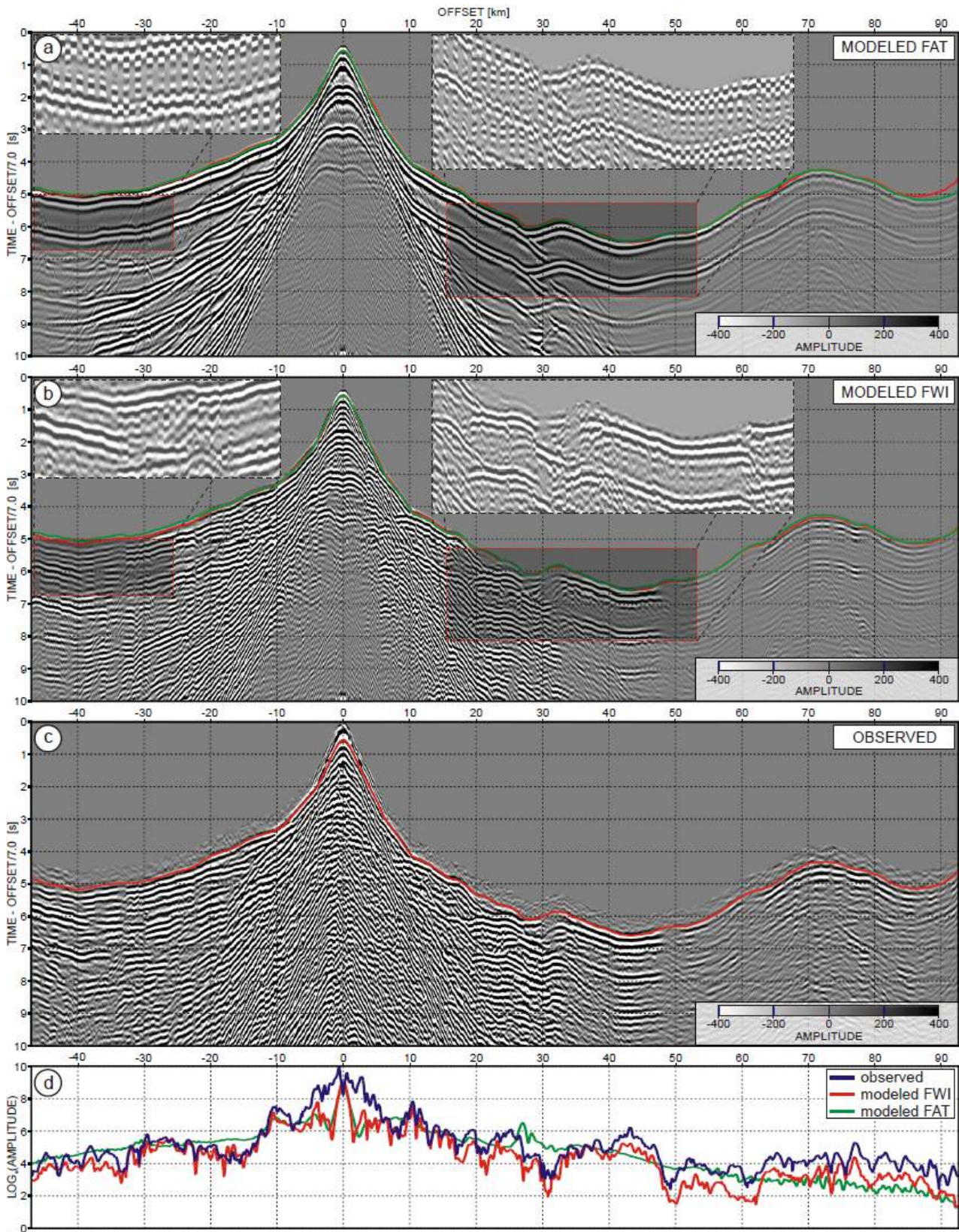


Figure 1: Comparison between the observed and modeled seismicograms. (a-b) Synthetic data computed using the (a) FAT and (b) FWI models. (c) Observed data. Zoom-panels show 5 interleaved traces from modeled and observed OBS gathers. The red/green curves (a-c) represent the picked/calculated first-arrival traveltimes respectively using the (a) FAT and (b) FWI models. The true-amplitude seismicograms in (a-c) are plotted using the same amplitude scale. (d) Comparison of the amplitude-versus-offset curves extracted from the seismicograms shown in (a-c). The amplitudes are extracted from a 400 ms window after the first arrivals. From Górszczyk et al. (2017)

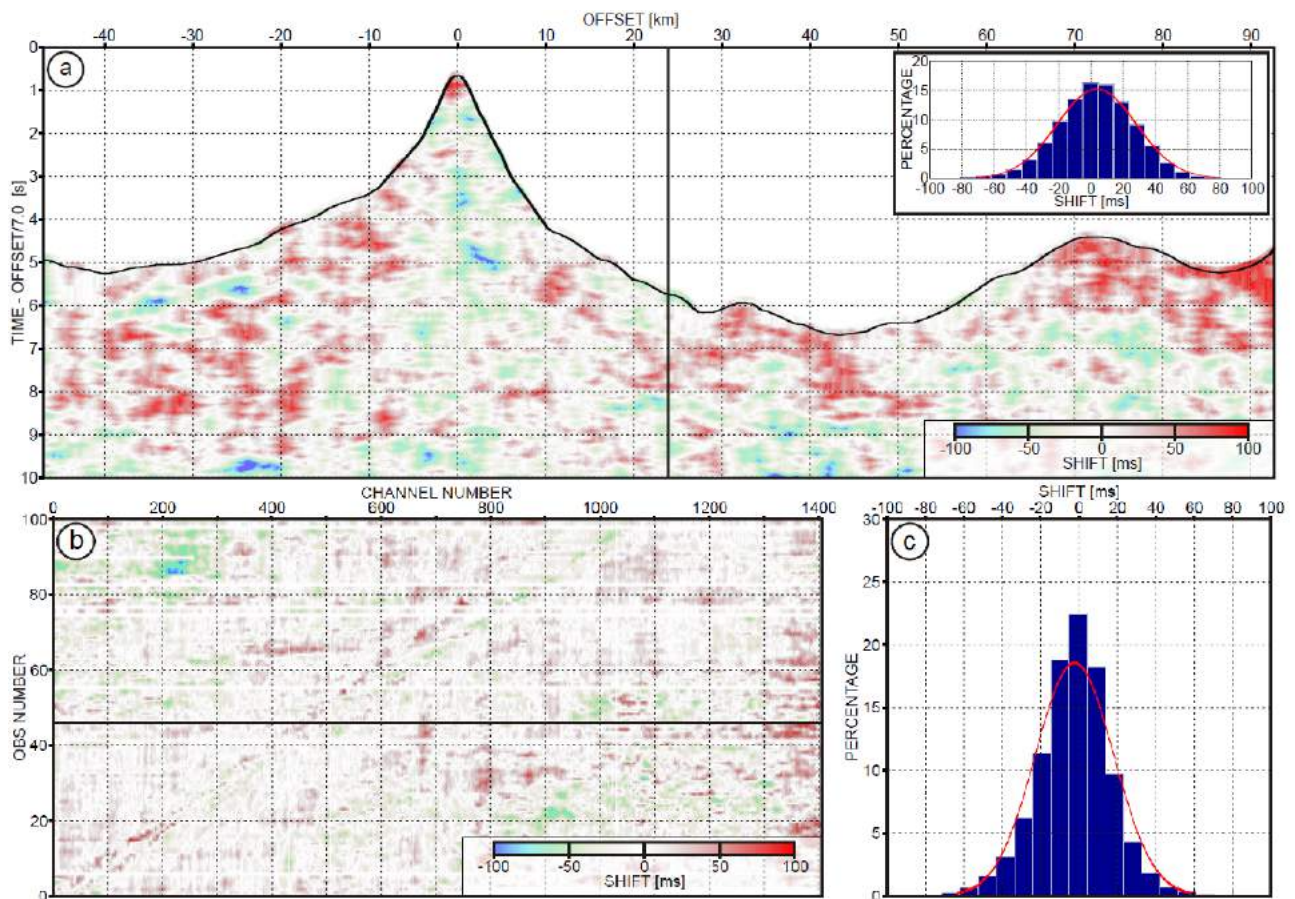


Figure 2: Illustration of DIW results. TOP: Map of the local shifts for all data samples in single OBS gather, with their histogram and fitted distribution shown in the inset. The black curve represents the samples collected 100 ms after the first arrivals. BOTTOM LEFT: Map of the local shifts for data samples located 100 ms after first arrival extracted from all OBS gathers. BOTTOM RIGHT: Histogram and fitted distribution of the shifts presented in BOTTOM LEFT panel. From Górszczyk et al. (2017)

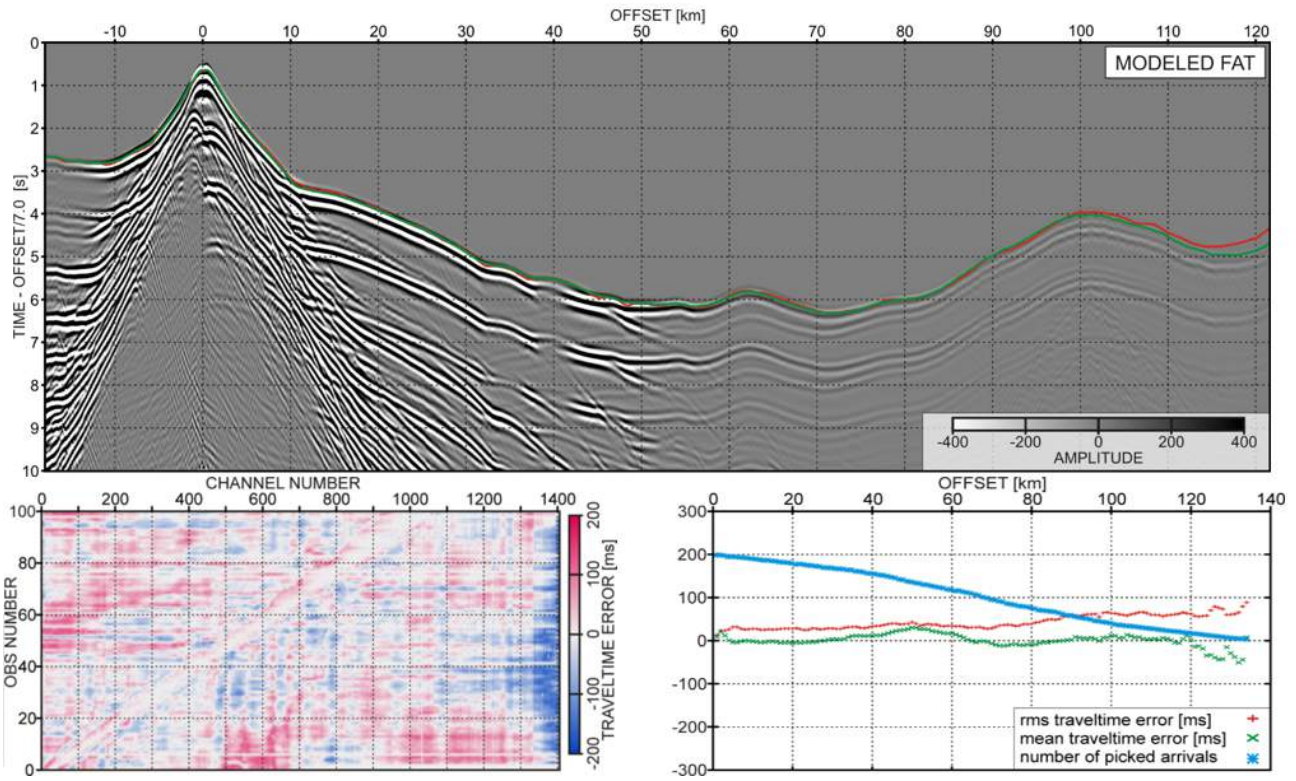


Figure 3: Assessment of the FAT model. TOP: Synthetic seismogram computed in the FAT model with superimposed picked (red line) and calculated (green line) traveltimes. BOTTOM LEFT: Traveltime difference map for all picked traces arranged in the source-vs-receiver coordinates. BOTTOM RIGHT: Mean traveltime difference and RMS (red + and green × respectively) calculated within 1-km offset intervals plotted against increasing offset. Cyan * represent number of picked traces at given offset. From Górszczyk et al. (2017)

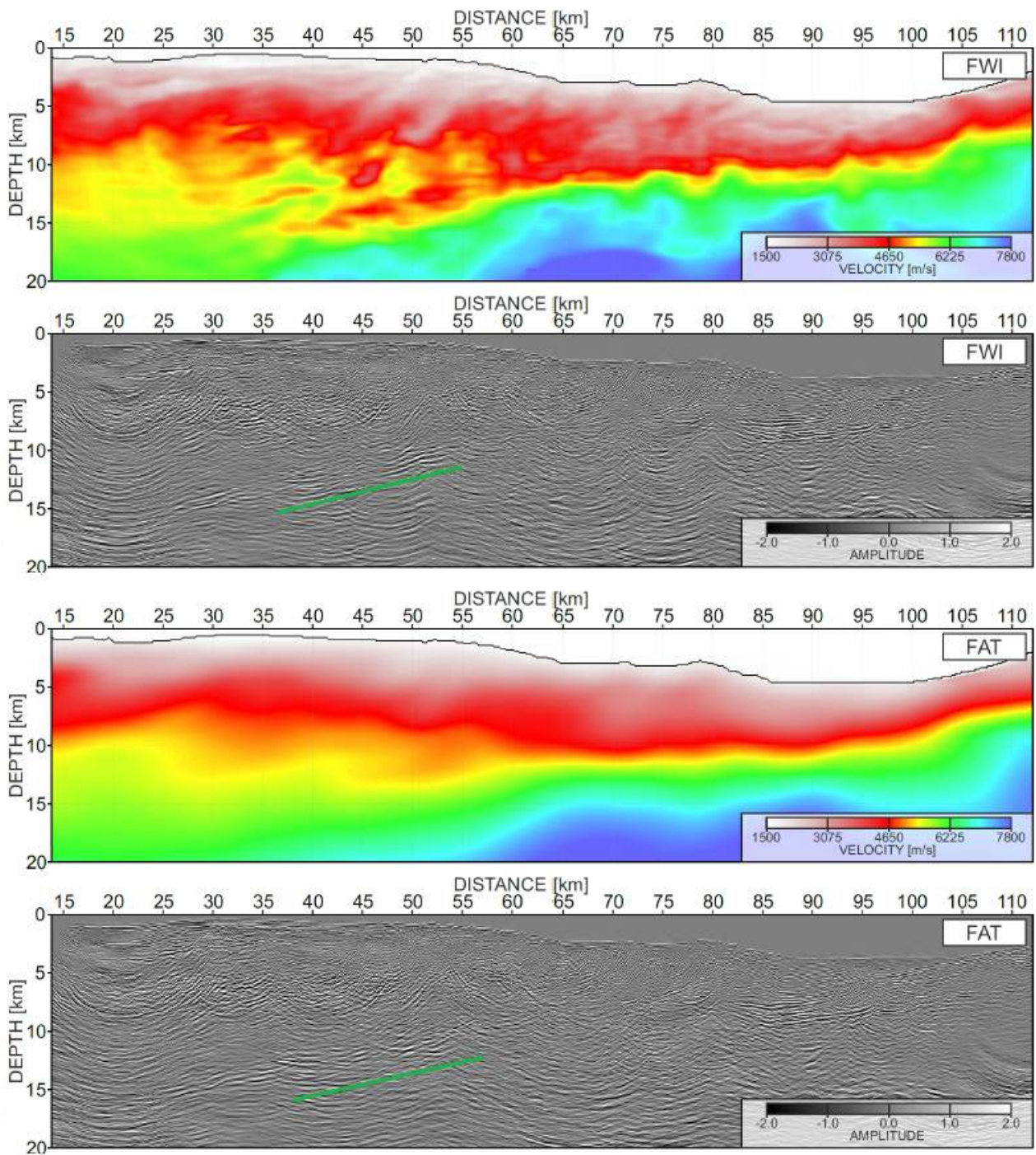


Figure 4: From the top to the bottom: FWI model and corresponding PSDM section derived from it; FAT model and corresponding PSDM section derived from it. Green line delineates better focusing of the interface in the PSDM section inferred from FWI model just below the LVZ.

Crustal-scale depth imaging via joint FWI of OBS data and PSDM of MCS data: a case study from the eastern Nankai Trough

Andrzej Górszczyk^{1,2}, Stephane Operto³, Laure Schenini³, and Yasuhiro Yamada⁴

¹Institute of Geophysics, Polish Academy of Sciences, 01-452, Warsaw, Poland

²Univ. Grenoble Alpes, ISTerre, 38000 Grenoble, France

³Université Cote d'Azur, CNRS, OCA, Géoazur, Valbonne, France, 250 Rue Albert Einstein, 06560 Valbonne

⁴Japan Agency for Marine-Earth Science and Technology (JAMSTEC), Yokohama 236-0001 Japan

Correspondence: Andrzej Górszczyk (agorszczyk@igf.edu.pl)

Abstract. Imaging *via* Pre-Stack Depth Migration (PSDM) ~~from-of~~ reflection towed-streamer Multi-Channel Seismic (MCS) data at the scale of the whole crust is inherently difficult. This ~~mainly-results-is~~ because the depth-penetration of the seismic wavefield is controlled, firstly ~~(i)~~ by the acquisition design, ~~like-such-as~~ streamer length and air-gun source configuration, and secondly ~~(ii)~~ by the complexity of the crustal structure. Indeed, the limited length of the streamer makes the estimation of velocities from deep targets challenging due to the velocity-depth ambiguity. ~~The-This~~ problem is even more pronounced when processing 2D seismic data, due to the lack of multi-azimuthal coverage. Therefore, in order to broaden our knowledge about the deep crust using seismic methods, ~~one-shall-target-we-present~~ the development of specific imaging workflows ~~integrating-that-integrate~~ different seismic data. Here we propose the combination of velocity model-building using (i) ~~first-arrival-traveltime-tomography-First-Arrival Tomography~~ (FAT) and ~~full-waveform-inversion-Full-Waveform Inversion~~ (FWI) of wide-angle/long-
5 offset data collected by stationary Ocean Bottom Seismometers (OBS) and (ii) PSDM of short-spread towed-streamer MCS data for reflectivity imaging, using the former velocity model as ~~a~~ background model. We present an application of such ~~a~~ workflow to seismic data collected by Japan Agency for Marine-Earth Science and Technology (JAMSTEC) and Institut Français de Recherche pour l'Exploitation de la Mer (IFREMER) in the eastern Nankai Trough (Tokai area) during the 2000/2001 SFJ experiment. We show that the FWI model, although derived from OBS data, provides ~~yet~~ an acceptable background velocity
10 field for the PSDM of the MCS data. ~~Furthermore, from-From~~ the initial PSDM, we ~~first~~ refine the FWI background velocity model by minimizing the ~~residual-moveouts-Residual Moveouts~~ (RMO) picked in the prestack migrated volume through ~~slope-tomography-Slope Tomography~~ (ST), from which we generate a better focused migrated image. Such integration of different seismic data sets and leading-edge imaging techniques led to ~~optimal-imaging-results-at-different-resolution-levels-greatly-improved-imaging-at-different-scales~~. That is, ~~the~~ large-to-intermediate ~~scale~~ crustal units identified in the high-resolution
15 FWI velocity model extensively complement the ~~short-scale-short-wavelength~~ reflectivity inferred from the MCS data to better constrain the structural factors controlling the geodynamics of the Nankai Trough~~area~~.

Copyright statement. to be included by Copernicus

1 Introduction

~~Since decades seismic~~ Seismic methods remain the primary source of information about the deep crust. The number of techniques related to seismic data acquisition and processing is continuously increasing stimulated mainly by the hydrocarbon exploration community. However, along with the impressive technological expansion made by ~~OilGas~~ oil and gas industry in terms of 3D depth-imaging at the reservoir-scale, one observes apparent stagnation in the corresponding development of seismic technologies like ~~full waveform inversion~~ Full-Waveform Inversion (FWI) (Tarantola, 1984; Pratt et al., 1998; Virieux et al., 2017) used by academia for the investigation of deep crustal targets.

The majority of regional seismic surveys conducted by the academic community still rely on sparse wide-angle 2D profiles carried out with a 5 km to 10 km receiver ~~interval~~ While very spacing. While a few attempts of FWI ~~application on of~~ crustal-scale ~~ocean bottom seismometer~~ Ocean Bottom Seismometer (OBS) datasets ~~were have been~~ published (e.g., Dessa et al., 2004a; Operto et al., 2006; Kamei et al., 2013; Górszczyk et al., 2017), imaging approaches utilizing ~~first arrival traveltome~~ tomography First-Arrival Tomography (FAT) in the high-frequency approximation are still the method of ~~the first~~ choice to process wide-angle data (e.g., Zelt and Barton, 1998). ~~From one hand, this approach allows to significantly lower~~ This approach significantly lowers the costs of the field acquisition and does not impose a large computational burden for processing. ~~From On~~ the other hand, it leads to smooth velocity models which provide limited and uncertain insight into the underlying structure.

To mitigate this compromise, the development of up-to-date acquisition strategies and processing workflows dedicated to the integration of wide-angle and short-spread reflection seismic data is needed. Indeed, during wide-angle offshore seismic ~~experiment, MCS experiments~~ Multi-Channel Seismic (MCS) data can be collected with the aim of further processing reflection arrivals using migration techniques. To obtain high-resolution ~~image images~~ of complex subsurface targets with strong lateral velocity variations, one may consider some variant of ~~pre-stack depth migration~~ Pre-Stack Depth Migration (PSDM), e.g. Kirchhoff Depth Migration (Schneider, 1978), Reverse Time Migration (RTM, Baysal et al., 1983), Gaussian Beam Migration (Hill, 2001) or Wave-Equation Migration (e.g. Biondi and Palacharla, 1996). However, the successful application of any type of PSDM inherently relies on the kinematic accuracy of the background velocity model. In the typical scenario, one obtains an initial interval velocity model V_{int} *via* classical Velocity Analysis (VA) followed by the application of Dix's formula (Dix, 1955). In the presence of dipping events and lateral velocity variations, this initial model should be further updated to improve its accuracy. ~~Among the~~ Over the last few decades various techniques ~~were have been~~ proposed to obtain more precise velocity models e.g. reflection tomography (Stork, 1992), CRP-scan (Audebert et al., 1997) or stereotomography (Lambaré, 2008) (see e.g. Jones et al., 2008, for detailed review). More recently FWI of ~~the MCS data also became~~ MCS data has been routinely applied by the ~~OilGas~~ oil and gas industry to build high-resolution background velocity models suitable for PSDM. The FWI velocity model can be even refined after PSDM by reflection traveltome tomography to optimize the ~~reflector reflectors~~ flattening in the ~~prestack common image gathers~~ pre-stack Common-Image Gathers (CIGs). Applications of FWI on short-spread/narrow-azimuth MCS data have also fostered news developments of the FWI technology such as the so-called ~~reflection waveform inversion~~ Reflection Waveform Inversion (RWI) with the aim to better exploit reflected waves for velocity model building by alternating reflection waveform tomography and least-squares migration (e.g. Brossier et al., 2015; Zhou

et al., 2015).

Therefore, without ~~doubts~~doubt, MCS data provide sufficient information to image targets of interest for hydrocarbon exploration. However, the finite length of the streamer hampers the procedure of picking sufficient moveouts in deep reflections, hence preventing reliable estimation of velocities for deep crustal ~~exploration-imaging~~. Therefore, since the methods routinely
5 applied for reservoir-scale imaging are ineffective when employed at the crustal scale, ~~one shall look~~ we shall investigate, how to overcome the above-mentioned limitations by optimally combining MCS acquisitions with sparse stationary-receiver ~~acquisitions implemented with OBSs~~OBS deployments.

Accordingly, this paper aims ~~at illustrating to illustrate~~ an up-to-date workflow combining ~~MCS and OBS~~ different types of seismic data with a case study devoted to the imaging of the eastern Nankai Trough subduction zone (Tokai area), off-
10 shore Japan. Our approach combines Kirchhoff PSDM of the MCS data with the independent procedure of velocity model-
building ~~from the OBS data. Thanks to the~~. We start our seismic imaging with two velocity models derived from VA of the MCS data and FWI of the OBS data respectively. The inaccuracy of VA model with respect to crustal-scale PSDM relies on the lateral-homogeneity assumption of classical time-domain VA, as well as the limited depth-penetration of the recorded wavefield. On the other hand, the velocities in FWI model are derived from the different seismic data, which due to the
15 wide-angle propagation regime may not have the same meaning than those found by the MCS data (which are more suitable for PSDM) in particular in presence of anisotropy. Therefore, based on Residual Moveouts (RMOs) picked after initial PSDM inferred from the VA and FWI models, we update both models using Slope Tomography (ST). Consequently we perform PSDM using updated models and compare the final results with their initial counterparts. We show, that thanks to the long-distance propagation paths ~~followed-travelled~~ by the wide-aperture wavefields, we ~~build~~ are able to build a reliable velocity model of
20 the whole crust using FAT and FWI. Taking into account the relatively small improvements introduced by ST in this model we conclude that it provides a good approximation of the velocity field for PSDM of the MCS data. This model provides good approximation of the velocity field for PSDM of MCS data, since the improvements introduced by ST in this case are relatively small. Compared to the workflow where the velocity model is obtained directly from the MCS data, ~~our approach (namely via VA and VA followed by ST update), the approach employing FWI of the OBS data~~ provides superior migrated sections ~~in~~
25 ~~terms of CIG flattening and better flattening of the CIGs~~. Moreover, structural consistency between the PSDM section and the high-resolution FWI model further ~~validate~~ validates the geological reliability of the crustal images.

This paper is organized as follows. We start with a brief introduction of the study area and the ~~presentation of the~~ seismic acquisition. After that, we describe our integrated processing workflow followed by the presentation of the results. We compare the two velocity models inferred from the OBS (FAT+FWI processing) and the MCS data (standard ~~velocity analysis~~),
30 ~~respectively, VA~~, as well as the CIGs and the migrated sections built from these two velocity models. Consequently, we present analogous comparison of the PSDM results derived from the VA and FWI models updated by the ST. This comparison highlights how the integrated approach combining MCS and OBS data leads to more accurate and better resolved images of the crustal structure than those inferred from ~~the~~ MCS data only. We further check the relevance of our imaging results by pointing out the correlations between geological features interpreted in both the migrated section and the FWI velocity model and well

documented geological structures reported in the area. We finalize the article with the discussion followed by the summary of the study provided in the conclusion chapter.

2 Data

The Nankai Trough, offshore Japan, is one of the most complex subduction zone settings around the world. In this area the Philippine Sea plate subducts below the Eurasian plate towards the north-west ~~direction-developing-developing a~~ large, sediment-dominated accretionary prism (Fig. 1(a)). The ~~whole-area-plate boundary~~ was divided into four segments (Fig. 1(a)), according to the occurrence of the large earthquakes activating them ~~each every~~ 100 to 200 years (Ando, 1975). In particular, due to the proximity of the collision zone between the Izu-Bonin Arc and central Japan, the Tokai segment (zone D in Fig. 1(a)) is characterized by high geodynamical complexity and the deformation of the surrounding ~~structurescrust~~. The local tectonic regime implies formation and subduction of ~~oceanic-volcanic~~ ridges, like the Zenisu Ridge (see Fig. 1(b)). Once such ~~topography-uplifts-enter-thickened crust enters~~ the subduction zone, ~~they-affect-it affects~~ the local geodynamical setting and ~~have-potential-to-govern-has the potential to control~~ the nucleation and propagation of large earthquakes (Lallemand et al., 1992; Le Pichon et al., 1996; Mazzotti et al., 2002; Kodaira et al., 2003). In the eastern Nankai Trough, the existence of such a subducted ridge (so-called Paleo-Zenisu Ridge) was first investigated by Lallemand et al. (1992) based on experimental sandbox modelling of oceanic ridge subduction and later supported by gravimetric and magnetic data analysis (Le Pichon et al., 1996). Interestingly the Tokai segment ~~was-not-ruptured-during-last-did not rupture during the most recent~~ large Tonankai (1944) and Nankaido (1946) earthquakes, which implies ~~gathering-of-compressive-stress-that the compressive stress has been increasing~~ for more than 160 years ~~now~~. This in turn rises ~~speculations-whether-it-will-be-the-place-of-the question of the timing of the~~ next megathrust earthquake (Le Pichon et al., 1996). Therefore, in order to investigate the seismogenic nature of the Nankai Trough, various data ~~are-have been~~ collected in this area. Some measurements come from passive seismic monitoring of fault zones conducted both below and on the seafloor (e.g. within the framework of NanTroSEIZE drilling program or DONET (Dense Oceanfloor Network System for Earthquakes and Tsunamis)). Simultaneously, active seismic experiments ~~are-conducted-for-the-purpose-of-geophysical-imaging-and-reconstruction-of~~ ~~have been conducted to geophysically image and reconstruct the~~ physical parameters of the underlying geological structure. In this study, we focus on the active seismic experiments. In particular we utilize two types of ~~the~~ seismic data - namely MCS reflection data and OBS wide-angle data - which combined with complementary processing techniques, shed new light on the deep structure of the eastern Nankai subduction zone.

2.1 Acquisition

In order to gain new ~~structural~~ insight into the ~~crustal structure of the~~ eastern Nankai Trough, 2D MCS and dense OBS datasets were acquired in 2000 and 2001, as part of the Seize France Japan (SFJ) project. The profiles were roughly perpendicular to the trench axis, resulting in significant variations in bathymetry, between approximately 500 m ~~to-and~~ 3750 m (Fig. 1(b)). During the 2001 SJF-OBS leg, ~~the~~ wide-angle dataset was collected by 100 OBSs spaced 1 km apart and equipped with 4.5 Hz

three-component geophones and hydrophones (Dessa et al., 2004a). ~~Total number~~ The total of 1404 shots were fired every 100 m along a 140 km long profile using an air-gun array with a total volume of 196 L.

A coincident towed-streamer profile was also acquired during the SFJ-MCS survey (Martin et al., 2000). ~~Total~~ The total air-gun array volume (GI GUN + BOLT) was 47 L and the shot interval was 50 m. ~~Streamer cable with~~ The streamer cable, which
5 employed 360 channels ~~and length of~~ distributed over 4.5 km, was towed at a depth of 15 m. ~~This acquisition setting translates to the~~ These acquisition parameters result in a CMP interval of 6.25 m and fold equal to 45.

Examples of MCS and OBS gathers are shown in Fig. 2. Both ~~wavefields have indeed~~ wavefields have fundamentally different anatomies, and hence ~~carry out information on the subsurface~~ contain the subsurface information of different resolution and depth penetration ~~power~~. MCS data (Fig. 2(a)) typically record short-spread reflections that are sensitive to ~~the~~ sub-vertical impedance contrasts, which can be ~~mapped~~ imaged by migration techniques. Additionally, smooth lateral velocity variations can be updated along the two one-way transmission paths connecting the reflectors mapped by migration with the sources and receivers at surface using either reflection traveltime (Woodward et al., 2008) or waveform (Brossier et al., 2015) tomography. However, this velocity updating can be robustly performed only at relatively shallow depths where the recorded reflection ~~move out~~ moveout is significant (~ 5 km according to the 4.5 km streamer length). In contrast, ~~anatomy of~~ OBS data (Fig. 2(b)) ~~is~~
10 are dominated by diving waves and post-critical reflections, namely ~~surface-to-surface~~ wide-aperture arrivals, which provide ~~an~~ information on the long to intermediate ~~sub-vertical~~ sub-horizontal wavelengths of the structure. Comparing to ~~the~~ towed-streamer surveys ~~the~~, stationary-receiver acquisitions have the necessary versatility to design long-offset regional acquisitions. At the expense of the receiver sampling they are able to record diving waves which undershoot the deepest targeted structure. For example, the first arrival shown in Fig. 2(b) beyond 60 km offset is the Pn wave - namely the refracted wave in the
15 upper mantle. ~~This description highlights that the~~ Thus integrated imaging workflows, exploiting all the information from ~~the wavefields which are caring different resolution~~ these different wavefields, which carry different resolving power, should ~~contribute to enrich the wavelength content of the~~ provide improved crustal-scale ~~images~~ image compared with techniques
20 employing single methodology.

2.2 Processing

25 Integration of migration- and tomography-like techniques has been a common practice in seismic imaging for decades (e.g. Agudelo et al., 2009). However, when the recorded data lack low frequencies and the acquisition setup does not allow for the recording of a wide variety of wave types ~~in terms of propagation regime (transmission versus reflection)~~ (transmitted versus
reflected), there is a significant resolution gap between the velocity model built by tomography and the reflectivity mapped by migration (Claerbout, 1985, see inset in Fig. 2(b)). Recent developments of ~~the~~ FWI technology associated with the acquisition
30 of broadband wide-azimuth/long-offset data aim at reducing this gap by pushing ~~the tomography and the~~ tomography and migration toward higher and lower wavenumber reconstructions, respectively (Biondi and Almomin, 2014). Although we use vintage MCS data in this study, which lack long offsets and low frequencies, the application of ~~the~~ FWI to the OBS data (after FAT) provides an illustration of the benefit from high-resolution waveform inversion techniques applied to long-offset data - namely, narrowing the resolution gap between velocity models and reflectivity.

To summarize the motivation behind our seismic processing workflow for deep crustal imaging, the application of FWI to OBS data: (i) led to a reliable velocity field for PSDM; (ii) provided a high-resolution velocity model reducing the wavenumber gap; (iii) contributed significantly ~~in to the~~ geological interpretation of the imaging results; (iv) integrated wide-angle seismic data into the depth imaging workflow of reflection seismic data.

5 2.2.1 OBS data

The aim of the processing of the SFJ-OBS dataset was to obtain a crustal-scale P-wave velocity model using FWI, such that it could provide insight into deep crustal targets with ~~a~~-wavelength-scale resolution. The dataset was recently reprocessed by Górszczyk et al. (2017).

The first step consisted of building an accurate starting model using FAT. In case of regional-scale datasets, long offsets imply that a large number of wavelengths are propagated, during which kinematic errors accumulate, hence making FWI prone to ~~eyele skipping (Virieux and Operto, 2009, Their Figure 7)~~ cycle-skipping (Virieux and Operto, 2009, their Figure 7). To overcome the ~~eyele skipping~~ cycle-skipping issue, one needs to carefully check that the starting model ~~allows to match~~ predicts the picked first arrival traveltimes with an error that does not exceed half of the period associated with the starting frequency (see green and red lines in Fig. 2(b)). In our case, we obtained ~~average traveltime RMS~~ a RMS misfit below 50 ms through ~~the~~ iterative FAT, where a careful model-driven ~~quality control~~ Quality Control (QC) of the traveltimes picking was performed. ~~Resulting~~ The resulting FAT model used as an initial model for FWI is presented in Fig. 3(a).

In the next step, acoustic Laplace-Fourier FWI (Shin and Cha, 2009; Brossier et al., 2009) combined with a layer-stripping approach was applied in the 1.5 - 8.0 Hz frequency band. Applying strong exponential time damping of the data during the early stages of the FWI allowed us to start the inversion from a frequency as low as 1.5 Hz, which together with the kinematic accuracy of our initial model contributes to mitigate the risk of ~~eyele skipping~~ cycle-skipping. A multiscale inversion approach consisted of proceeding from low to high frequency bands, which is combined with a continuation from wide to narrow scattering angles implemented by relaxation of the time damping of the Laplace-Fourier inversion. These two hierarchical data-driven strategies were complemented with a layer-stripping procedure implemented by progressive extension of the offset range involved in the inversion. Such ~~combination allowed a~~ combination allowed us to mitigate the nonlinearity of the inverse problem and reduce the risk of cycle-skipping accordingly.

Comparison of the final FAT and FWI models in Fig. 3 shows the significant resolution improvement achieved by FWI. Some smearing artefacts are also introduced close to the edge of the shaded area (representing the range of the first-arrival ray-coverage) due to the insufficient sampling of the subsurface. Exhaustive validation, including quantitative evaluation of synthetic and real data-fitting with Dynamic Image Warping (DIW, Hale, 2013), wavelet estimation and checker-board tests, led to conclusion that the final FWI model ~~explain~~ reproduce the field data with high accuracy (the reader is encouraged to see Górszczyk et al., 20

2.2.2 MCS data - preprocessing

Processing of the SFJ-MCS data was focused on the best possible reflection imaging of the subduction system. The difficulty of the task ~~relied not only on~~ is not only due to the complexity of the underlying structure but also ~~on~~ due to the low ratio

between the streamer length and the deepest targeted structure as well as two-dimensional acquisition setting. The processing sequence is summarized in Table 1.

At the preprocessing stage, we mainly focus on the noise attenuation, wavelet corrections and multiple elimination. To improve the ~~signal-to-noise ratio~~ Signal-to-Noise Ratio (SNR), ~~few filters aiming on~~ filters designed to remove different kinds of ~~reverberations~~ coherent noise (e.g. swell noise, seismic interference noise, linear noise, double shots) were applied. The bubble effect was removed followed by the zero-phasing of the wavelet and reduction of the ghost on the source and receiver side.

~~In the following step~~ Next, we focused on the attenuation of multiples. The lack of general demultiple approach imposes the need ~~of tuning to tune~~ the processing workflow according to the limitations caused by the geological setting and the acquisition parameters. In our case, the deeply underlying complex structure causes a lot of triplications and discontinuities of the wavefield especially at later times. What is more, due to the relatively short streamer the ability to track the moveouts is limited. This in turn confines the robustness of the moveout-discrimination-based methods (e.g. utilizing Radon transform, Hampson, 1986; Kabir and Marfurt, 1999) which can easily damage the primaries if aggressive parametrization is used. Alternatively, approaches based on multiples prediction and subtraction, like Surface-Related Multiple Elimination (SRME, Verschuur et al., 1992) could be utilized. While SRME is a data-driven technique, and therefore ~~do not require an~~ does not require a priori knowledge about the subsurface, its assumptions can be violated in different ways by the field data. In their overview, Dragoset and Jeričević (1998) discussed in details limitations of SRME when 2D data are affected by the ~~off-plane~~ out-of-the-plane propagation, lacking the near-offset traces or contain distortions caused for example by the streamer feathering.

In our processing scheme, we chose first to apply 2D SRME, which is unlikely to affect the primaries. After SRME the vast majority of the free surface multiples were attenuated. However, in certain areas of the accretionary wedge (e.g. between 55-80 km of the model distance in Fig. 3), we observed that residual multiples still strongly contaminating the later arrivals. These residuals are visible on the gathers presented in Fig. 4 (a-b) both with and without NMO correction applied. To further attenuate the remaining multiples we applied High-Resolution Radon Demultiple (HRRD, Hargreaves and Cooper, 2001). Data after HRRD are presented in the corresponding panels (c-d) of Fig. 4. Note that the multiple arrivals were better suppressed now, although generally weaker signal amplitudes are observed in the processed part of the gathers. The fact that SRME was unable to fully remove these arrivals can be an indicator of the out-of-the-plane wavefield propagation in this area associated with the complex geology and/or cross-dip inclination of the structures.

2.2.3 MCS data - velocity analysis

In this section, we will ~~throw some light upon~~ examine the issue of building a velocity model from short-streamer MCS data. In the classical VA the moveout curve is (in a typical case) approximated by the hyperbolic relationship between zero-offset time and velocity. Stacking velocities are often picked ~~in certain distance intervals~~ at multiple locations along a line and are further interpolated between ~~the~~ analysis points. This procedure is usually repeated several times with the simultaneous refining of the sampling interval leading to the more detailed velocity estimation (Yilmaz, 2001). The sampling of the velocity picks is supposed to be tailored by the interpreter to the degree of horizontal and vertical velocity ~~heterogeneities defining the structure~~ under consideration heterogeneity defining the subsurface structure. Therefore the ~~capability to build the~~ ability to build an ac-

curate velocity model *via* VA will firstly rely on the ability to track the moveouts, which in turn can be affected ~~in-the-countless way-by-different-factors~~ (e.g. noise, multiples, streamer length, arrival time, AVO variations, frequency bandwidth, velocity itself, geological structure etc. etc.). Secondly it will depend on the optimal ~~velocity-picks-samplingsampling-of-velocity-picks~~, and therefore on the initial interpretation of the data and the corresponding velocity field.

5 In Fig. 5, we present the CMP gathers from Fig. 2(a) extracted along the whole profile every 7.5 km. On top of them, we superimpose panels resulting from the hyperbolic semblance-based VA. ~~Few-structural-remarks-can-be-pointed~~. Firstly, ~~strong~~ Large bathymetry variations are directly reflected by the change of the magnitude of the moveouts along the profile. Secondly, ~~thin~~ Thin sedimentary cover on the shallow water part of the profile (landward side) generates a smaller number of energetic reflections than the thick ~~sediments-deposits-on-sediment-deposits-beneath~~ the intermediate and deep water ~~part~~. Thirdly, ~~the~~ moveouts-section. Moveouts are more continuous in the gathers recorded over the relatively undeformed sediments accumulated in the trench, compared to the reflections originating at the steeply dipping interfaces in the accretionary wedge. Generally ~~the~~ continuous reflections with traceable moveouts can be observed within the time window of about ~~2-3~~ 2 to 3 s of two-way-traveltime (TWT) after the first break.

The results confirm that ~~the-meaningful-information-about-the-hyperbolic-moveouts-can-be-retrieved-only~~ meaningful information from-hyperbolic-moveout-can-only-be-retrieved in the shallow part where the ~~points-of-the~~ semblance amplitudes are sufficiently well focused and allow ~~to-track~~ the increasing velocity trend with time to-be-tracked. However, ~~on-at~~ the intermediate and later times the VA panels become more chaotic and no distinct ~~focusing-points-can-potentially-maximum-semblance-focusing-points~~ can be picked. This is of course ~~straightforward-a~~ consequence of the increasing depth of the target to be imaged. Moreover, it is also worth ~~to-mention-mentioning~~ that the final FWI model (Fig. 3(b)) manifests ~~few-places-a-few-locations~~ where velocity gradient with depth becomes negative. Some of these areas are related to existence of Low-Velocity Zones (LVZ/LVZs) which might be difficult to detect through the classical VA.

2.2.4 MCS data - slope tomography

To further improve the velocity model obtained *via* VA, one may consider application of some variant of reflection traveltime tomography utilizing information about ~~residual-moveouts-(RMO)-RMOs~~ of reflections tracked in the ~~Common-Image-Gathers~~ (CIGs) CIGs after initial PSDM. Of course, the robustness of the tomographic approach relies on the precision and redundancy of the picked RMOs. In the simplest case, the velocity model is ~~build~~ built through the minimization of the difference between traveltimes generated in the model with raytracing and those measured from the data (Bishop et al., 1985; Farra and Madariaga, 1988). In addition to traveltimes, slopes of locally-coherent events can be picked in common-shot and common-receiver gathers and included as an objective measures in the inversion (Billette and Lambaré, 1998). Development of so called slope tomography or stereotomography proved that this technique gives a promising alternative for estimating laterally heterogeneous velocity models from reflection seismic data (see Lambaré, 2008, for a review).

In the data domain, the input data (picks) are defined by their source to receiver two-way traveltime and two slopes - namely the horizontal component of the slowness vectors at the shot and receiver positions (Fig. 6(a-b)). For a given velocity model, each locally-coherent event is associated ~~to-with~~ two ray segments (and therefore two one-way traveltimes) emerging at certain

angles from a scattering position (whose position needs to be estimated) towards the source and receiver (Billette and Lambaré, 1998). Different variants of ST ~~were developed since the time it was first proposed~~have been developed up to date. Some were aiming ~~on at~~ reducing sensitivity of the method to the quality of the input data (Biondi, 1992). ~~Other~~Others established the connection with migration-based velocity analysis where the picking is performed ~~in on~~ the prestack migrated volume (Chauris et al., 2002; Nguyen et al., 2008). More recently Tavakoli F. et al. (2017) and Tavakoli F. et al. (2019) reformulated ST using ~~the~~ eikonal solver to perform the forward problem and the adjoint-state method to avoid the explicit building of the sensitivity matrix in the inverse problem (Adjoint Slope Tomography - AST). This formulation leads to a more compact parametrization where several ray attributes are removed from the model space and the shot and receiver positions from the data spaces. Following this approach, Sambolian et al. (2019) further reduced the problem parametrization to a single input data class being ~~a~~ the slope, while inverting for the velocity parameter only. This parsimonious parametrization is achieved by using the focusing equations of Chauris et al. (2002) to position the scattering points in depth through a migration of two kinematic invariants (two-way traveltimes and one slope) instead of processing the coordinates of the scattering positions as optimization parameters. One of the advantageous assumptions about the input data for ST is that the picked events need to be only locally coherent (see Fig. 6(a-b)). Unlike traveltimes tomography, it is not necessary to follow continuous arrivals across the whole trace gather either ~~follow some specified~~ ~~interface/horizon~~horizon (typically the interface corresponding to the specified geological boundary) (Billette and Lambaré, 1998). Tracking locally-coherent events by semi-automatic picking instead of continuous reflections leads generally to denser sampling, and hence ~~a~~ a better resolved velocity model. The attributes of locally-coherent events, referred to as kinematic invariants, are simultaneously picked in the common-shot and common-receiver gathers by local slant stack (Billette et al., 2003). Alternatively, one can infer them from de-migration of the dip attribute and scattering positions picked in the pre-stack depth-migrated volume with the benefits of a better SNR and an easier interpretation or QC (Guillaume et al., 2008).

From Fig. 7(a), presenting the PSDM section computed in the FWI model, one can easily spot the areas of stronger and weaker reflectivity. To further update the FWI model *via* ST one needs to track locally coherent events and therefore the areas of lower reflectivity might be poorly constrained by the picked data. To get ~~the insight~~an insight into which part of model space was well constrained by our ST picks, in Fig. 7(b) we show the PSDM section from Fig. 7(a) overlaid with the cloud of scattering points positioned through the migration of the kinematic invariants. ~~Colour~~The colour palette corresponds to the dip of the migrated facets. These dips are defined by the sum of the take-off angles of the two rays emerging at the scattering position and ending at the shot and receiver positions. Colour variations highlight the consistency of the picked scattering points with the underlying geology. The cold-coloured dots (blue, light blue and cyan) follow seaward dipping structures, while warm-coloured dots (yellow, orange and red) trail the interfaces of opposite inclination. Not surprisingly the ~~amount~~number of picks decreases significantly with increasing depth, although we can observe quite ~~dense collection~~a dense set of picks around the plate interface on the landward side between the backstop and subducting oceanic plate at depth around 15 km. The fact that the corresponding events were picked at this depth confirms high accuracy of the FWI model - however in case of short-streamer data the sensitivity of moveouts to velocity changes at this depth is rather low.

It is worth mentioning here that in Fig. 7(b) between 60 and 85 km of model distance and below 10 km depth we observe

collection of scattering points with variable conflicting dipping (interleaved color-scale changes: cold-warm-cold-warm-cold-warm). This cloud of picks matches with the strong events which have not been migrated properly with any available velocity model (including velocity scaling) and appear in the PSDM section in form of so-called migration smiles. The corresponding area of the FWI model after ST update (Fig. 8(d)) exhibits locally unrealistic velocity values in the upper oceanic crust (~8000 m/s). Although generally higher velocity values are observed in this area both in the FAT and FWI models, the evidence of migrations artefacts combined with some overestimated velocities after ST might suggest the out-of-the-plane propagation of the wavefield in this complex geological setting.

To express in a more quantitative way the relative sampling of the model by the picks we calculate their hit-rate inside square grid cells of size 0.5 km. Consequently we clip 10 % of the highest values, normalize the results between 0 and 1 and divide into 3 uniform intervals. Fig. 7(c) presents the PSDM section with superimposed shading masks corresponding to the normalized sampling of the model by picks. The brightest area of the section was sampled between 100-66 % of the maximum (clipped) picks hit-rate value. The next two grey-shaded areas were sampled between 66-33 % and 33-0 % respectively. The black area ~~define~~ defines the part of the model not sampled by picks.

To conclude ~~on this analysis~~ we can make the statement that the robustness of the ST method is reflected by the distribution of the scattering points demonstrating high consistency with the dipping structures observed in the PSDM section. This in turn assures regular and redundant information which might be exploited for velocity model building. However, the ~~amount of the picks~~ number of picks as well as they robustness (especially during 2D processing) reduces significantly with depth as the reflectivity of the structure decreases. This is more pronounced on the landward part (backstop) of the model. Therefore, the constraints ~~of on the~~ velocity model at greater-larger depths - although significantly better than those provided by the classical VA - are weaker than ~~at the shallow part~~ in the shallow section.

2.2.5 PSDM

During the PSDM step, we tested different background velocity models, targeting ~~on the best~~ the optimal flattening of the CIGs. Here we consider only four of them. The first one was built from MCS data by classical VA, while the second one is the FWI model inferred from the OBS data (Fig. 3(b)). In this sense, PSDM of MCS data can be seen as a additional QC of the FWI model. We expect that both VA and FWI models could be not strictly precise for PSDM of MCS data at such a geological scale (in the first case because of the lateral-homogeneity assumption of classical time-domain VA; and in the second case because the wide-angle seismic data are used to build the velocity model for reflection data). To further check how much we can improve the ~~the~~ PSDM results by refining these velocity models, we perform RMO picking in the pre-stack migrated gathers which were subsequently minimized by ST. Therefore, through the ST we also assess the accuracy of both velocity models for PSDM (small modifications of the model indicates its robustness) and optimize the imaging result. The original and refined velocity models produced four PSDM images. We essentially tested Kirchhoff PSDM as well as Controlled Beam Migration (CBM) with the aim of improving SNR of the final result (considering our low-fold dataset). CBM is an extension of Beam Migration technology which combines the steep-dip imaging capabilities of Kirchhoff techniques with the multi-arrival abilities of WEM (Vinje et al., 2008). The results obtained with both migration techniques however, did not provide ~~clear~~

~~justification~~ a clear indication of which approach was superior and therefore, for simplicity, we decided to adopt PSDM in the classical Kirchhoff version.

3 Results

In the following sections we present the PSDM results inferred from the four above-mentioned background velocity models. We assess them by looking at the flatness of the CIGs as well as through the correlation of the migrated sections with the underlying velocity models. Furthermore, we ~~assess~~ compare the main observed structures against the results reported by previous geological studies conducted in this area.

3.1 Imaging

The PSDM sections, superimposed on the VA- and FWI-related velocity models with which they were computed, are presented in Fig. 8. Amplitudes of the stacks were scaled with a function of depth equal to $depth^{1.5}$. Generally, all PSDM sections exhibit similar quality in the shallow seabed area (first 2-3 km). However the PSDM sections obtained with the FWI and FWI+ST velocity models (Fig. 8(c-d)) show much better focused reflectivity at intermediate and large depths. This is especially ~~well pronounced in the area~~ pronounced below the accretionary prism (5-10 km depth, 55-100 km distance) as well as in the landward dipping subducting oceanic crust down to about 15 km depth.

We validate resulting PSDM sections against the corresponding background velocity models. ~~Indeed, structure~~ Structure imaged in PSDM sections inferred from VA velocity models is less ~~foeus~~ well focused than in those inferred ~~from~~ using the FWI models. This is ~~the~~ a consequence of the fact that VA models lack resolution and accuracy ~~in term of velocity estimation~~ due to the estimation method. Comparing panels (a) and (b) in Fig. 8 on can observe that the VA-related velocity models exhibit a similar level of smoothness, although the PSDM section corresponding to the VA model updated by ST (Fig. 8(b)) looks more geologically relevant. The main changes in the PSDM sections computed with the VA and VA+ST velocity model are shown in the area where ST introduced the most significant velocity updates. These perturbations are shown in Fig. 8(e). ~~Colour-scale~~ The colour-scale was clipped between ± 1000 ~~km~~ m/s for better readability, however, the lowest velocity perturbations (dark blue colour) reach -1500 ~~km~~ m/s providing some flavour of the inaccuracy of the VA model.

Analogous comparison of the FWI and FWI+ST velocity models and related PSDM sections (Fig. 8(c-d)) leads ~~also to few~~ to the following conclusions. First, the high-resolution FWI model provides a more focused PSDM image (Fig. 8(c)). Second, the reflectivity image follows nicely the absolute velocity changes mapped by the FWI model. Third, the updated FWI+ST model marginally improves the final PSDM section (Fig. 8(d)). This improvement results from relatively small velocity perturbations introduced in the FWI model by ST (compare Fig. 8(e-f)). Also, the ST damages some dipping velocity structures which are more visible in the FWI model than in the FWI+ST model (see backstop between 5-10 km depth or accretionary prism between 65-85 km distance). The last effect is related to the nature of the perturbations typically introduced by the re-

flection data which are more sensitive to the vertical velocity variations. In contrast, the long-offset OBS data are better suited to capture the horizontal and steeply dipping velocity changes.

To further QC the imaging results in Fig. 9 we present a set of CIGs after PSDM using each of the four velocity models. The CIGs inferred from the VA model (Fig. 9(a)) show that only shallow events were flattened while the intermediate and deeper reflections have strong under-corrected RMOs, indicating ~~too fast velocities~~ that velocities are too fast. After updating the VA model using ST and running PSDM, the events are flatter (Fig. 9(b)). However under-corrected RMOs are still visible in the deeper part of the gathers. Additionally, we start seeing some over-corrected reflections (e.g. CIG 3245) indicating too slow velocities. For comparison, CIGs inferred from the final FWI model (Fig. 9(c)) show that the majority of reflections are flat including those originating from the deep crust. Refining the FWI model by ST (Fig. 9(d)) introduces rather local and moderate improvements in terms of the flattening and position of the reflections.

The overall trend after ST is the up-shifting of the reflectors suggesting that the velocity refinement by ST mainly ~~lower~~ lowers the FWI velocities. This likely highlights the imprint of the anisotropy. The velocities estimated by FWI ~~being are~~ close to the horizontal velocities, while those constrained by MCS data ~~being closer to the normal moveout counterparts~~ are closer to velocities associated with normal moveout. In all cases, ~~some~~ RMOs are more pronounced at the side edges of the profile. The effect is caused by the lack of coverage in these areas, which translates to weak ~~constraints~~ constraint during velocity model building.

To quantitatively express the depth changes in the PSDM results introduced by ~~ST-update~~ ST-update of the FWI model we estimate the depth shifts between the PSDM sections inferred from FWI and FWI+ST models. We calculated local cross-correlation for each two corresponding traces from the mentioned sections which led to consistent map of depth changes between them. Fig. 10 shows the PSDM section inferred from the FWI+ST velocity model with overlaid colour-map corresponding to the depth shifts varying from the -250 m to 750 m. The most significant differences are observed at the left and right flanks of the section. In these areas, after ST, we observe up-shift of the interfaces ~~up to of~~ about 500 m near the landward plate boundary of the subducting oceanic crust and about 750 m around Moho below the trench. In the central part of the migrated section, shifts are relatively smaller in the order of 100-200 m and 0-50 m in the oceanic crust and the accretionary prism, respectively. Such distribution of the depth shifts results most likely from the fact that the central part of the FWI model is well sampled from both sides by the various diving waves and wide-angle reflections. In contrast, deeper parts located at the edges of the model are mainly illuminated by the Pn refracted waves propagating mainly horizontally and sporadic PmP reflections. This confers more degrees of freedom to ST for ~~improving~~ introducing changes in the velocity model, although the limited sensitivity of the short-spread reflection data to velocities at these depths as well as possibility to pick some migration artefacts.

3.2 Geological consistency

Before interpretation ~~step~~, we filter-out (using curvelet transform (Górszczyk et al., 2015)) some of the strong migration smiles apparent in the final PSDM sections which ~~we~~ after analysis in pre-stack domain have been addressed as residual multiples

or out-of-the-plane arrivals ~~after analysis in pre-stack domain~~. To foster the joint interpretation of the PSDM results and FWI velocity models, we overlay migrated section on the (i) FWI ~~+ST~~ model, (ii) velocity gradient image, i.e. ~~;~~ average of horizontal and vertical derivative of the FWI velocity model (Fig. 11(a-b)) and (iii) perturbation model - the FWI model after removing velocity trend obtained by 5th order polynomial fitting of each vertical profile of the FWI model (Figure 12(a-b)). The resulting sections provide not only an image of the reflectivity but also a high-resolution background insight ~~on to~~ the seismic properties (P-wave velocity changes) of the structural units delineated by the reflectors. The resulting images show the high consistency between the velocity structures and the reflectivity image, improving continuity and delineation of some interfaces which are locally better visible in PSDM section than in the velocity model and *vice versa*. Based on the deformation features and the velocity structures identified in the obtained images, we classify the geology of this region into block-segments including different deformation domains (see inset in Fig. 11(b)), which are bounded by three major faults and the basement - namely the subducting plate interface.

3.2.1 Structure of the subducting oceanic crust

The oceanic crust in the region of Tokai is commonly described as being affected by volcanism (Le Pichon et al., 1996; Nakanishi et al., 1998; Martin, 2003; Mazzotti et al., 2002; Dessa et al., 2004b; Kodaira et al., 2002; Takahashi et al., 2002). The main reason for this is the proximity of the Izu-Bonin Arc which develops periodical volcanic ridges on its western flank (see white arrows in Fig. 1(a)), which are further subducted beneath the central Japan. ~~Such~~ Moreover the geodynamic setting of this region is further under the influence of the Izu Arc colliding with the central Japan as well as the initial thrusting stage around the Zenisu Ridge. Such a setting can explain the ~~undulating deformed~~ shape of the subducting oceanic crust with the local increasing/lowering of velocity values observed in Fig. 11(a) as well as weak and rather difficult to distinguish ~~boundaries between the layers of the reflectivity within the~~ subducting crust. In the resulting images, the Moho boundary is derived from both the absolute velocity model (Fig. 11(a)) and the positive change of the gradient value (red color) in Fig. 11(b). The migrated image at this depth (not surprisingly owing 4.5 km streamer length) is strongly affected by ~~so-called "migration smiles"~~ migration smiles. To support interpretation of upper mantle one can additionally calculate refraction ray-tracing in the final FWI model and track the rays corresponding to Pn arrival, which tend to ~~be channelled along propagate just below~~ the Moho boundary (see Fig. 13(e) in Górszczyk et al., 2017, for the illustration).

~~Within the subducting oceanic crust, we can distinguish discontinuous and local reflections which can be interpreted as a top of layer 3. This interpretation is supported by the image in~~ In Fig. 11(b) ~~where in~~ the upper part of the oceanic crust one can ~~observe identify~~ about ~3 km thick band of positive gradient (red color) - interpreted as a layer ~~2--which 2~~. This significant gradient vanishes around the solid line corresponding to the top of layer 3. Top of the layer 2 is marked with the dashed line following discontinuous reflectivity package between the decollement and the top of layer 3. In both Fig. 11(a-b) and 12(a) we observe step-like velocity variations around this dashed line at model distance 82, 73, ~~65 or 59~~ or 53 km. The velocity changes correlate with discontinuities of reflections (see e.g. 12(b) zoom-panel 6) which further extend with depth into migration ~~artifacts~~ artefacts. This observation is consistent with the proposed system of major ~~thrusts faults~~ offsetting various reflectors across the whole oceanic crust in the region of Nankai Trough (Dessa et al., 2004b; Kodaira et al., 2002; Tsuji et al.,

2013; Lallemand, 2014). ~~Some of these faults can act as a paths for fluid migration causing alternation of the deep rocks (e.g. serpentinization) which may further be a reason for rapid velocity variations within the subducting oceanic crust. Such fluid-rock interaction and velocity alteration have been also reported at the outer ridge of the Tohoku margin (Korenaga, 2017).~~ Above the top of layer 2 with a solid line we interpret the top of the sedimentary subduction channel acting as a decollement which is relatively well supported by reflectivity ~~of-on~~ the PSDM image and by the high-resolution velocity gradient changes. ~~Towards land-side, between 40-55~~ Between 40 and 55 km of model distance we clearly ~~point the negative gradient of velocity~~ identify the negative velocity gradient creating major LVZ. The top of this LVZ is consistent with the plate interface. In our case, access to the high-resolution velocity model directly ~~indicate~~ indicates a negative velocity gradient which ~~alternatively could~~ could alternatively be obtained from the polarization reversal in the reflectivity image - addressing for example presence of fluids. However, at this depth we observe ~~bunch of ringing-like reflections rather than~~ several ringing reflections (see arrows in Fig. 11(a)) rather than a clear interface suggesting a relatively thick layer of accumulated deformed material. Discontinuous reflection patterns can be explained by the clastic deposition or duplexing of sedimentary or volcanic material (Gutscher et al., 1998b, a). Alternatively the LVZ can be interpreted as a damage-zone caused by a ~~topography~~ topographic high passing through this area. ~~Region~~ Regions of similar nature were identified by Bangs et al. (2009) in the western part of the Nankai Trough. The plate interface can be further tracked as a landward dipping interface reaching about 15 km depth at 25 km of model distance. Generally higher velocity and large-scale perturbations visible in the gradient model above plate interface in this area (25-40 km of distance) indicate the significant underplating of the subducting material and ~~accumulating it into its incorporation into~~ the backstop, simultaneously causing uplift of this part of the prism clearly visible in the shallower ~~part~~ section.

20 3.2.2 Subduction front and recent accretionary wedge

On top of the subducting oceanic crust, ~~the-our seismic~~ imaging results reveal the complex accretion system of the Tokai segment, which can be divided into four domains. The weakly deformed domain is located at the south-east of the profile starting at ~85 km of model distance (although some smaller deformations pop-up around 87 km) and bounded by the western flank of Zenisu Ridge. ~~The-This~~ domain is composed ~~from turbidite-elastic~~ of clastic turbidite sediments deposited on the volcanic basement, creating the continuous reflection surfaces visible in the gradient model and PSDM image. One can easily observe a cone-like structure (dotted line) at 95 km ~~of model distance~~ with two faults originating at its apex. ~~This is most likely~~ It most likely correspond to a subducting volcano considering the decay of velocity within the oceanic crust below it (Fig. 11(a)) The sub-horizontal solid line between 80-95 km of distance marks the strong reflector identified as an extension of the decollement since the deformation of the sediments accumulated in the trench starts to occur above this interface.

30 The weakly deformed domain is separated form the accretion front - moderately deformed domain - ~~with the major thrust fault that by the major frontal thrust fault, which~~ generates ocean-floor topography at 85 km ~~of model distance and reach and reaches~~ the decollement around 13 km further landward direction. ~~It corresponds to the frontal thrust of this plate subduction margin, reported by Hayman et al. (2011). (Hayman et al., 2011).~~ The whole domain shows ~~analogous reflection surfaces as in case of~~ similar reflection patterns to the weakly deformed domain, suggesting that it consists of sedimentary layers, but ~~is~~

~~folded~~ they are folded and offset by several thrust faults reaching ~~to~~ the detachment interface. The consistency of these thrusts with the velocity models is striking even in ~~a~~ small details. For example gradient variations in Fig. 11(b) ~~follows consistently~~ consistently follow the steeply dipping stacked sheets of sediments in the accretionary prism. In Fig. 12(a), shallow slope basins are clearly delineated by the blue color and separated by the thrust creating ~~bathymetry~~ a bathymetric outcrop at 73 km ~~of model distance~~. Similar consistency can be observed in terms of the vanishing reflectivity of the PSDM image above the decollement between 67-75 km (dotted line, zoom-panel 5) which is nicely delineated by lower velocity values in this place indicated by blue colour. Interestingly the decollement on the right side of this feature manifests itself in Fig. 11(b) as a positive (red) gradient while on the left side it becomes opposite (blue) suggesting decrease of the velocity.

3.2.3 Tokai thrust and subducting Paleo Zenisu ridge

10 The moderately deformed domain extends landward until the Tokai thrust separating the frontal part of the prism from a heavily deformed domain (Kawamura et al., 2009; Hayman et al., 2011). This segment in turn shows less pronounced reflectivity ~~which~~ but the interpretation can be significantly augmented ~~for the interpretation purposes by the pattern of the~~ using the pattern of velocity changes in the absolute, gradient and de-trended velocity models. ~~Structural characteristic~~ The structural characteristics of this domain ~~is~~ are different from two previous deformation domains, suggesting that it has undergone a longer period of deformation at this margin (according to Martin et al., 2003, starting at the Upper Miocene). In particular the significant increase of the velocity values just above the plate interface (Fig. 11(a)) combined with a lack of clear impedance contrasts and ~~bathymetry uplift~~ uplifted bathymetry suggest old accumulated material atop of plate interface. Alternatively, the increase of the velocity and strong deformation within this wedge between 50-65 km (dashed line) ~~can suggest topography~~ may indicate a topographic high (namely, evidence of Paleo Zenisu ridge) whose left flank is colliding with the old accreted thrusts (dotted line 15 between 55-60 km of distance). We can also observe in Fig. 12(a-b) (zoom-panel 4) that the small topography topographic pop-up is separating two areas of blue colour indicating zones of lower velocities. Such ~~setting a geometry~~ suggests that the Tokai Thrust ~~can be~~ is rooted at the down-stepping plate interface ~~following up~~, follows up the left flank of this velocity anomaly, then ~~it is bending~~ bends above it and increases the dipping dip again to reach its outcrop ~~in at~~ the seabed.

We also observe that the thickness of ~~sloping slope~~ sediments in the shallow part of this segment (50-63 km; blue colour in Fig. 12(a)) is larger than in case of shallow sediment basins on top of the moderately deformed domain. This suggests a longer time of accumulation and partial erosion of the uplifted, steeply dipping thrust sheets around the Kodaiba Fault - a major thrust fault with significant strike-slip displacement (Pichon et al., 1994). Strong gradient variations in Fig. 11(b) delineate the geometry of this fault especially above the plate interface. High consistency of PSDM image and velocity changes can also be observed in Fig. 12(a-b) (zoom-panel 3). We root this fault at the plate boundary suggesting splay-fault branching. Alternatively it can 25 originate at the deep backstop on top of ~~the~~ underplated material which might be suggested by zoom-panel 2 of Fig. 12. More detailed geological investigation is necessary to confirm speculations about this fault which potentially governs seismogenic setting in Tokai ~~area~~ segment.

3.2.4 Backstop area

Finally, on the most landward part of the profile, we image the old deformation complex ~~acting now~~ which now acts as a backstop. The deformation of large landward-dipping stacked thrust sheets can be ~~indicated by the~~ identified by velocity changes correlating with reflectivity visible in the PSDM image. ~~The No active deformation can be clearly identified in~~
5 this area anymore (in contrast to the frontal area of the prism (see Yamada et al., 2014)). The recent seismic imaging results (Shiraishi et al., 2019) derived from the 3D MCS data recorded in the more central part of the Nankai area (the Kumano fore-arc basin) reveal similar example and the underlying old accretionary prism which is not actively deforming. In the Tokai area, the hypothesis that this old complex could have been pushed landward by large subducting ridges was ~~imposed~~ based on the results of wide angle seismic experiments (Kodaira, 2000; Nakanishi et al., 2002) as well as sandbox tests (Dominguez et al.,
10 2000). Placing our results in this context would require further geological expertise. Nevertheless, from the joint interpretation of velocity models and PSDM section one can divide this domain into: (i) the thick relatively ~~not deformed~~ undeformed sediment cover of the fore-arc basin suggesting that the (ii) underlying complex of large thrust sheets between 4-10 km depth is inactive and ~~overlay~~ overlies the (iii) significant amount of underplated material delineated by the increase of velocity at depth of around 11 km.

15 4 Discussion

4.1 MCS data penetration at depth

The ability of the seismic wavefield to penetrate the deep crust is limited by various factors including acquisition geometry, employed equipment, geological context etc. Sufficiently dense shot coverage increases the fold and therefore spatial sampling redundancy. Ability to generate and record broadband frequency signals improves resolution and signal to noise ratio. Long
20 streamers, although challenging to operate in the field, provide ~~offset range allowing large enough offsets~~ to track the moveouts of later arrivals originating from deep interfaces. All these ~~aspects improve the capability of the MCS streamer~~ factors improve the ability of MCS data to retrieve meaningful information about the deep lithosphere crust. Our MCS data were recorded using a 4.5 km long streamer, which is quite limited compared to industrial 15-km long streamer ~~drastically reduces this capability~~. Nevertheless, we ~~showed~~ have shown that the robust depth imaging of ~~the~~ legacy data with short offset and limited fold is
25 possible when supported by ~~the~~ velocity model-building based on FWI of ~~the~~ wide-angle stationary receiver data. Despite the different regimes of ~~the~~ wavefield propagation between wide-angle and reflection data our FWI model provided an accurate velocity field for PSDM. This ~~correctness allowed to pick the~~ accuracy allowed the picking of slopes for ST and ~~introduce~~ introduced relatively small velocity changes even at greater depths (~ 15 km). In contrast, the velocity model obtained *via* VA was ~~far more too~~ inaccurate to allow for similar PSDM accuracy after ST update. Therefore building a high-resolution
30 FWI velocity model from wide-angle OBS data can significantly improve the PSDM results from short-streamer MCS data especially in terms of velocity accuracy below ~~the~~ a shallow sub-seabed.

4.2 2D/3D PSDM

2D seismic data processing is inherently inaccurate because of the three-dimensional wavefield propagation within the lithosphere which takes place during field experiment. ~~Assumption about the ideal~~ Therefore, the assumption of inline scattering along the shooting profile is ~~closer to the wishful thinking rather than reality~~ unrealistic. Nevertheless, ~~the compromise between~~ the high costs of the ~~despite the improved accuracy of a~~ 3D experiment ~~and the accuracy of the results in terms of resolution~~ allowing to retrieve meaningful geological information often capitalizes in the two-dimensional acquisition geometries, 2D surveys remain a practical approach to retrieving geological information about the subsurface. This in turn ~~provides~~ capitalizes in limited prospect for subsequent processing (for example accuracy of retrieved seismic attributes) and the following quality of the results when cross-dipping structures are expected in the vicinity of the 2D profile. While the imaging of deep crustal targets requires a long time of wavefield propagation, it means that the wavefront is also more prone to travel out of the 2D profile plane. ~~Complexity~~ The complexity of the geological ~~structure~~ structures that we aimed to reconstruct here combined with ~~its significant depth allow~~ their significant depth lead us to believe that the final imaging results ~~can be affected by the~~ are affected by “3D ~~effect~~ effects” reducing the continuity of the deeper interfaces. This was also apparent from the locally occurring arrivals which were stacking into migration ~~artifacts~~ artefacts. We decided to filter them out before final interpretation as we were unable to flatten them with any velocity model even with velocity scaling ranging between 80%-120%. To overcome such issues, one can consider cross-dip processing which takes into account the 3D character of the data (for example feathering of the streamer) and of the geology (Nedimović et al., 2003). However, ultimately we believe that there is a need to move toward future 3D experiments tackling the problem of complex deep crustal imaging (Morgan et al., 2016). Indeed, illumination of the structure from different azimuths would increase the reliability of the final image and minimize the amount of ~~speculations in~~ terms of speculation in the geological interpretation. On the other hand, this development ~~shall~~ needs to be combined with the efficient acquisition logistic schemes and robust processing techniques able to handle large scale imaging problems.

4.3 On subducted oceanic ridges

The typical problem from Tokai region, which can justify use of 3D rather than 2D crustal-scale imaging, is the existence of the basement volcanic ridges and mountains subducting below the accretionary wedge and affecting the geodynamical setting of the region. While their existence is undeniable (even from the bathymetric observations in Fig. 1(a)) the exact shape and scale of those features in the historical studies utilizing reflection or wide-angle seismic imaging and velocity model building, sand-box experiments or gravity and magnetic anomalies analysis is rather inconsistent. Moreover, ~~demonstrating~~ representing these ridges as continuous features of uniform height is oversimplified. To better understand the problem it is enough to look how in Fig. 1(b) the Zenisu Ridge ~~along the axis~~ rapidly changes its height along axis with respect to the trench from nearly 30 3 km to few hundreds meters. Therefore to precisely image and investigate the influence of such ~~chain~~ chains of distributed volcanoes of various size subducted below the complex accretionary prism, 3D imaging ~~seems mandatory~~ is required.

4.4 PSDM using FAT model

FWI in its classic form is a local optimization problem. In other words, the misfit functional representing the difference between real and synthetic data is iteratively minimized (~~toward~~towards a global minimum) starting from the initial model which is sufficiently close to the true one, such that it fulfils the cycle-skipping criterion. If this condition is not met, FWI will be guided

5 ~~toward inaccurate local minimum~~. ~~Therefore~~ towards local minimum and inaccurate model. ~~Therefore, the~~ accuracy of the initial FWI model determines ~~correctness of its final version~~the correctness of the final results. In this sense, the robustness of the initial FWI model (in our case derived by FAT) can be also verified through PSDM. Indeed, if the velocity values in the FWI model are searched in the vicinity of the FAT model then the PSDM utilizing FAT model should also provide good results. To investigate this issue we performed two additional PSDM tests considering FAT model and its version updated by

10 ST. Figure 13 presents analogous comparison of PSDM gathers as in case of Fig. 9. After careful inspection of the migrated events we can conclude that the flatness of the CIGs inferred from the FAT model is locally worst than those inferred from the FWI model 9(c). ~~In overall~~Overall however, these results are much better than those obtained with VA and VA+ST velocity models (Fig. 9(a-b)). This shows how wide-angle data can be useful to build correct velocity model for PSDM using classical FAT technique. In our case, this approach outperforms the results of PSDM with classical VA model as well as its updated

15 version with rather sophisticated ST method. On the other hand, one can argue that the improvement of PSDM results obtained with FWI as compared to FAT are not proportional to the efforts devoted to apply FWI. Note however, that the smooth FAT model is unable to bring detailed structural information which is directly accessible from the high-resolution FWI model and therefore we believe that moving from FAT to FWI is absolutely crucial for better geological interpretation.

5 Conclusions

20 ~~Presented~~The presented case study shows that crustal-scale FWI of OBS data can significantly improve depth migrated images inferred from towed-streamer data. Firstly, the final FWI model provides reliable information about the velocity not only at shallow depths (< 5 km) but also at depths down to the upper mantle, which are beyond the range of the typical ~~length of streamer~~streamer length. These more reliable velocities ~~translates~~translate to better-focused PSDM at depth. Secondly, a high-resolution FWI velocity model brings quantitative information on the seismic properties of the main structural units at

25 long-to-intermediate scales, which are complementary to the short scales mapped in the PSDM image. This justifies ~~usefulness of the~~the use of crustal-scale FWI models derived from wide-angle data for geological interpretation. We believe that further development of crustal-scale imaging toward 3D OBS acquisition and 3D multi-parameter visco-elastic FWI will bring us closer to better understanding of the deep crustal targets through the joint wide-angle and reflection data processing.

Competing interests. The authors declare no competing interests

Acknowledgements. This study was partially funded by the internal IG PAS grant 1A/IGF PAN/2016 and by the SEISCOPE Consortium (<http://seiscope2.osug.fr>); This study was granted access to the HPC resources of ~~SIGAMM~~; (a) [CYFRONET \(http://crimson.oca.eu\)](http://crimson.oca.eu) and kdm.cyfronet.pl, GrantID: 3dwind);(b) CINES/IDRIS ~~under the~~ (allocation A0050410596 made by GENCI-);(c) [SIGAMM \(http://crimson.oca.eu\)](http://crimson.oca.eu).

The authors thank Romain Brossier and Ludovic Metivier for providing TOY2DAC FWI code developed within SEISCOPE Consortium.

- 5 PSDM processing was performed with TSUNAMI software by Tsunami Development LLC. We thank Rafael Almeida, Jean-Xavier Dessa, Gou Fujie, Ayako Nakanishi and Jean Virieux for fruitful discussion.

References

- Agudelo, W., Ribodetti, A., Collot, J.-Y., and Operto, S.: Joint inversion of multichannel seismic reflection and wide-angle seismic data: Improved imaging and refined velocity model of the crustal structure of the north Ecuador–south Colombia convergent margin, *Journal of Geophysical Research: Solid Earth*, 114, B02306, 2009.
- 5 Ando, M.: Possibility of a major earthquake in the Tokai district, Japan and its pre-estimated seismotectonic effects, *Tectonophysics*, 25, 69–85, 1975.
- Audebert, F., Diet, J. P., Guillaume, P., Jones, I., and Zhang, X.: CRP Scan: 3-D preSDM velocity analysis via zero offset tomographic inversion, in: *Expanded Abstracts*, pp. 1805–1808, Soc. Expl. Geophys., 1997.
- Bangs, N., Moore, G., Gulick, S., Pangborn, E., Tobin, H., Kuramoto, S., and Taira, A.: Broad, weak regions of the Nankai Megathrust and implications for shallow coseismic slip, *Earth and Planetary Science Letters*, 284, 44–49, <https://doi.org/10.1016/j.epsl.2009.04.026>, 2009.
- 10 Baysal, E., Kosloff, D., and Sherwood, J.: Reverse time migration, *Geophysics*, 48, 1514–1524, 1983.
- Billette, F. and Lambaré, G.: Velocity macro-model estimation from seismic reflection data by stereotomography, *Geophysical Journal International*, 135, 671–680, 1998.
- 15 Billette, F., Le Bégat, S., Podvin, P., and Lambaré, G.: Practical aspects and applications of 2D stereotomography, *Geophysics*, 68, 1008–1021, 2003.
- Biondi, B.: Velocity estimation by beam stack, *Geophysics*, 57, 1034–1047, 1992.
- Biondi, B. and Almomin, A.: Simultaneous inversion of full data bandwidth by tomographic full-waveform inversion, *Geophysics*, 79(3), WA129–WA140, 2014.
- 20 Biondi, B. and Palacharla, G.: 3-D prestack migration of common-azimuth data, *GEOPHYSICS*, 61, 1822–1832, <https://doi.org/10.1190/1.1444098>, 1996.
- Bishop, T. N., Bube, K. P., Cutler, R. T., Langan, R. T., Love, P. L., Resnick, J. R., Shuey, R. T., and Spinder, D. A.: Tomographic determination of velocity and depth in laterally varying media, *Geophysics*, 50, 903–923, 1985.
- Brossier, R., Operto, S., and Virieux, J.: Seismic imaging of complex onshore structures by 2D elastic frequency-domain full-waveform inversion, *Geophysics*, 74, WCC105–WCC118, <https://doi.org/10.1190/1.3215771>, <http://link.aip.org/link/?GPY/74/WCC63/1>, 2009.
- 25 Brossier, R., Operto, S., and Virieux, J.: Velocity model building from seismic reflection data by full waveform inversion, *Geophysical Prospecting*, 63, 354–367, <https://doi.org/10.1111/1365-2478.12190>, 2015.
- Chauris, H., Noble, M., Lambaré, G., and Podvin, P.: Migration velocity analysis from locally coherent events in 2-D laterally heterogeneous media, Part I: Theoretical aspects, *Geophysics*, 67, 1202–1212, 2002.
- 30 Claerbout, J.: *Imaging the Earth's interior*, Blackwell Scientific Publication, 1985.
- Dessa, J. X., Operto, S., Kodaira, S., Nakanishi, A., Pascal, G., Uhira, K., and Kaneda, Y.: Deep seismic imaging of the eastern Nankai Trough (Japan) from multifold ocean bottom seismometer data by combined travelttime tomography and prestack depth migration, *Journal of Geophysical Research*, 109, doi:10.1029/2003JB002689, 2004a.
- Dessa, J. X., Operto, S., Kodaira, S., Nakanishi, A., Pascal, G., Virieux, J., and Kaneda, Y.: Multiscale seismic imaging of the eastern Nankai Trough by full waveform inversion, *Geophysical Research Letters*, 31, doi:10.1029/2004GL020453, 2004b.
- 35 Dix, C. H.: Seismic velocities from surface measurements, *Geophysics*, 20, 68–86, 1955.

- Dominguez, S., Malavieille, J., and Lallemand, S. E.: Deformation of accretionary wedges in response to seamount subduction: Insights from sandbox experiments, *Tectonics*, 19, 182–196, <https://doi.org/10.1029/1999tc900055>, 2000.
- Dragoset, W. H. and Jeričević, Ž.: Some remarks on surface multiple attenuation, *GEOPHYSICS*, 63, 772–789, <https://doi.org/10.1190/1.1444377>, 1998.
- 5 Farra, V. and Madariaga, R.: Non-linear reflection tomography, *Geophysical Journal*, 95, 135–147, 1988.
- Górszczyk, A., Cyz, M., and Malinowski, M.: Improving depth imaging of legacy seismic data using curvelet-based gather conditioning: A case study from Central Poland, *Journal of Applied Geophysics*, 117, 73–80, <https://doi.org/10.1016/j.jappgeo.2015.03.026>, 2015.
- Górszczyk, A., Operto, S., and Malinowski, M.: Toward a robust workflow for deep crustal imaging by FWI of OBS data: The eastern Nankai Trough revisited, *Journal of Geophysical Research: Solid Earth*, 122, 4601–4630, <https://doi.org/10.1002/2016JB013891>, 2017.
- 10 Guillaume, P., Lambare, G., Leblanc, O., Mitouard, P., Moigne, J. L., Montel, J.-P., Prescott, T., Siliqi, R., Vidal, N., Zhang, X., and Zimine, S.: Kinematic invariants: an efficient and flexible approach for velocity model building, in: *SEG Technical Program Expanded Abstracts 2008*, Society of Exploration Geophysicists, <https://doi.org/10.1190/1.3064100>, 2008.
- Gutscher, M.-A., Kukowski, N., Malavieille, J., and Lallemand, S.: Episodic imbricate thrusting and underthrusting: Analog experiments and mechanical analysis applied to the Alaskan Accretionary Wedge, *Journal of Geophysical Research: Solid Earth*, 103, 10 161–10 176, <https://doi.org/10.1029/97jb03541>, 1998a.
- 15 Gutscher, M.-A., Kukowski, N., Malavieille, J., and Lallemand, S.: Material transfer in accretionary wedges from analysis of a systematic series of analog experiments, *Journal of Structural Geology*, 20, 407–416, [https://doi.org/10.1016/s0191-8141\(97\)00096-5](https://doi.org/10.1016/s0191-8141(97)00096-5), 1998b.
- Hale, D.: Dynamic warping of seismic images, *Geophysics*, 78, S105–S115, 2013.
- Hampson, D.: The discrete Radon transform: a new tool for image enhancement and noise suppression, in: *Expanded Abstracts*, pp. 141–143, *Soc. Expl. Geophys.*, 1986.
- 20 Hargreaves, N. and Cooper, N.: High-resolution radon demultiple, in: *SEG Technical Program Expanded Abstracts 2001*, Society of Exploration Geophysicists, <https://doi.org/10.1190/1.1816341>, 2001.
- Hayman, N. W., Burmeister, K. C., Kawamura, K., Anma, R., and Yamada, Y.: Submarine Outcrop Evidence for Transpressional Deformation Within the Nankai Accretionary Prism, Tenryu Canyon, Japan, in: *Accretionary Prisms and Convergent Margin Tectonics in the Northwest Pacific Basin*, pp. 197–214, Springer Netherlands, https://doi.org/10.1007/978-90-481-8885-7_9, 2011.
- 25 Hill, N. R.: Prestack Gaussian-beam depth migration, *Geophysics*, 66, 1240–1250, 2001.
- Jones, I. F., Bloor, R. I., Biondi, B. L., and Etgen, J. T., eds.: *Prestack Depth Migration and Velocity Model Building*, Society of Exploration Geophysicists, <https://doi.org/10.1190/1.9781560801917>, 2008.
- Kabir, M. M. N. and Marfurt, K. J.: Toward true amplitude multiple removal, *The Leading Edge*, 18, 66–73, <https://doi.org/10.1190/1.1438158>, 1999.
- 30 Kamei, R., Pratt, R. G., and Tsuji, T.: On acoustic waveform tomography of wide-angle OBS data - Strategies for preconditioning and inversion, *Geophysical Journal International*, 192, 1250–1280, 2013.
- Kawamura, K., Ogawa, Y., Anma, R., Yokoyama, S., Kawakami, S., Dilek, Y., Moore, G. F., Hirano, S., Yamaguchi, A., and YK05-08 Leg 2, T. S., and YK06-02 Shipboard Scientific Parties: Structural architecture and active deformation of the Nankai Accretionary Prism, Japan: Submersible survey results from the Tenryu Submarine Canyon, *Geological Society of America Bulletin*, 121, 1629–1646, <https://doi.org/10.1130/b26219.1>, 2009.
- 35 Kodaira, S.: Subducted Seamount Imaged in the Rupture Zone of the 1946 Nankaido Earthquake, *Science*, 289, 104–106, <https://doi.org/10.1126/science.289.5476.104>, 2000.

- Kodaira, S., Kurashimo, E., Park, J.-O., Takahashi, N., Nakanishi, A., Miura, S., Iwasaki, T., Hirata, N., Ito, K., and Kaneda, Y.: Structural factors controlling the rupture process of a megathrust earthquake at the Nankai trough seismogenic zone, *Geophysical Journal International*, 149, 815–835, 2002.
- Kodaira, S., Nakanishi, A., Park, J. O., Ito, A., Tsuru, T., and Kaneda, Y.: Cyclic ridge subduction at an inter-plate locked zone off Central Japan, *Geophysical Research Letters*, 30, 1339, 2003.
- Korenaga, J.: On the extent of mantle hydration caused by plate bending, *Earth and Planetary Science Letters*, 457, 1–9, <https://doi.org/10.1016/j.epsl.2016.10.011>, 2017.
- Lallemant, S.: Strain models within the forearc, arc and back-arc domains in the Izu (Japan) and Taiwan arc-continent collisional settings, *Journal of Asian Earth Sciences*, 86, 1–11, 2014.
- 10 Lallemant, S., Mallavieille, J., and Calassou, S.: Effects of ridge oceanic subduction on accretionary wedges: Experimental modeling and marine observations, *Tectonics*, 11, 1301–1313, 1992.
- Lambaré, G.: Stereotomography, *Geophysics*, 73(5), VE25–VE34, 2008.
- Le Pichon, X., Lallemant, S., Tokuyama, H., Thoué, F., Huchon, P., and Henry, P.: Structure and evolution of the backstop in the eastern Nankai Trough area (Japan): implications for the soon-to-come Tokai earthquake, *Island Arc*, 5, 440–454, 1996.
- 15 Martin, V.: Structure et tectonique du prisme d'accrétion de Nankai dans la zone de Tokai par imagerie sismique en trois dimensions, Ph.D. thesis, Université de Paris Sud, 2003.
- Martin, V., Lallemant, S., Pascal, G., Kuramoto, S., Tokuyama, H., Noble, M., Singh, S., Nouzé, H., and the SFJ survey onboard scientific party: Structure and Tectonics of the 2000 French - Japanese 3D Seismic Reflection Survey Area on the Eastern Nankai Accretionary Complex, in: *Eos Transactions AGU 81(48)*, Fall Meeting Supplement, AGU, 2000.
- 20 Martin, V., Henry, P., Lallemant, S. J., Dessa, J. X., Noble, M., and Operto, S.: Discontinuous accretion in the Tokai segment of Nankai trough, in: *EOS Trans. AGU*, vol. 84, American Geophysical Union, 2003.
- Mazzotti, S., Lallemant, S., Henry, P., Pichon, X. L., Tokuyama, H., and Takahashi, N.: Intraplate shortening and underthrusting of a large basement ridge in the eastern Nankai subduction zone, *Marine geology*, 187, 63–88, 2002.
- Morgan, J., Warner, M., Arnoux, G., Hooft, E., Toomey, D., VanderBeek, B., and Wilcock, W.: Next-generation seismic experiments – II: 25 wide-angle, multi-azimuth, 3-D, full-waveform inversion of sparse field data, *Geophysical Journal International*, 204, 1342–1363, 2016.
- Nakanishi, A., Shiobara, H., Hino, R., Kodaira, S., Kanazawa, T., and Shinamura, H.: Detailed subduction structure across the eastern Nankai Trough obtained from ocean bottom seismograph profiles, *Journal of Geophysical Research*, 103, 27 151–27 168, 1998.
- Nakanishi, A., Kodaira, S., Park, J.-O., and Kaneda, Y.: Deformable backstop as seaward end of coseismic slip in the Nankai Trough seismogenic zone, *Earth and Planetary Science Letters*, 203, 255–263, [https://doi.org/10.1016/s0012-821x\(02\)00866-x](https://doi.org/10.1016/s0012-821x(02)00866-x), 2002.
- 30 Nedimović, M. R., Mazzotti, S., and Hyndman, R. D.: Three-dimensional structure from feathered two-dimensional marine seismic reflection data: The eastern Nankai Trough, *Journal of Geophysical Research: Solid Earth*, 108, <https://doi.org/10.1029/2002jb001959>, 2003.
- Nguyen, S., Baina, R., Alerini, M., Lambaré, G., Devaux, V., and Noble, M.: Stereotomography assisted by migration of attributes, *Geophysical Prospecting*, 56, 613–625, <https://doi.org/10.1111/j.1365-2478.2008.00699.x>, 2008.
- Operto, S., Virieux, J., Dessa, J. X., and Pascal, G.: Crustal imaging from multifold ocean bottom seismometers data by frequency-domain 35 full-waveform tomography: application to the eastern Nankai Trough, *Journal of Geophysical Research*, 111, doi:10.1029/2005JB003 835, 2006.
- Pichon, X. L., Lallemant, S., Fournier, M., Cadet, J., and Kobayashi, K.: Shear partitioning in the eastern Nankai Trough: evidence from submersible dives, *Earth and Planetary Science Letters*, 128, 77–83, [https://doi.org/10.1016/0012-821x\(94\)90136-8](https://doi.org/10.1016/0012-821x(94)90136-8), 1994.

- Pratt, R. G., Shin, C., and Hicks, G. J.: Gauss-Newton and full Newton methods in frequency-space seismic waveform inversion, *Geophysical Journal International*, 133, 341–362, 1998.
- Sambolian, S., Operto, S., Ribodetti, A., Tavakoli F., B., and Virieux, J.: Parsimonious slope tomography based on eikonal solvers and the adjoint-state method, in: *Expanded Abstracts, 80th Annual EAGE Meeting (Copenhagen)*, 2018.
- 5 Sambolian, S., Operto, S., Ribodetti, A., Tavakoli, B., and Virieux, J.: Parsimonious slope tomography based on eikonal solvers and the adjoint-state method, *Geophysical Journal International*, Pending minor revision, 2019.
- Schneider, W. A.: Integral formulation for migration in two and three dimensions, *Geophysics*, 43, 49–76, 1978.
- Shin, C. and Cha, Y. H.: Waveform inversion in the Laplace-Fourier domain, *Geophysical Journal International*, 177, 1067–1079, 2009.
- Shiraishi, K., Moore, G. F., Yamada, Y., Kinoshita, M., Sanada, Y., and Kimura, G.: Seismogenic zone structures revealed by improved 3D seismic images in the Nankai Trough off Kumano, *Geochemistry, Geophysics, Geosystems*, <https://doi.org/10.1029/2018gc008173>, 2019.
- 10 Stork, C.: Reflection tomography in the post migrated domain, *Geophysics*, 57, 680–692, 1992.
- Takahashi, N., Amano, H., Hirata, K., Kinoshita, H., Lallemand, S., Tokuyama, H., Yamamoto, F., Taira, A., and Suyehiro, K.: Faults configuration around the eastern Nankai Trough deduced by multichannel seismic profiling, *Marine Geology*, 187, 31–46, 2002.
- Tarantola, A.: Inversion of seismic reflection data in the acoustic approximation, *Geophysics*, 49, 1259–1266, 1984.
- 15 Tavakoli F., B., Operto, S., Ribodetti, A., and Virieux, J.: Slope tomography based on eikonal solvers and the adjoint-state method, *Geophysical Journal International*, 209, 1629–1647, <https://doi.org/10.1093/gji/ggx111>, 2017.
- Tavakoli F., B., Operto, S., Ribodetti, A., and Virieux, J.: Matrix-free anisotropic slope tomography: theory and application, *Geophysics*, 84(1), R35–R57, 2019.
- Tsuji, T., Kodaira, S., Ashi, J., and Park, J.-O.: Widely distributed thrust and strike-slip faults within subducting oceanic crust in the Nankai Trough off the Kii Peninsula, Japan, *Tectonophysics*, 600, 52–62, 2013.
- 20 Verschuur, D. J., Berkhout, A. J., and Wapenaar, C. P. A.: Adaptive surface-related multiple elimination, *Geophysics*, 57, 1166–1177, 1992.
- Vinje, V., Roberts, G., and Taylor, R.: Controlled beam migration: a versatile structural imaging tool, *First break*, 26, 109–113, 2008.
- Virieux, J. and Operto, S.: An overview of full waveform inversion in exploration geophysics, *Geophysics*, 74, WCC1–WCC26, 2009.
- Virieux, J., Asnaashari, A., Brossier, R., Métivier, L., Ribodetti, A., and Zhou, W.: An introduction to Full Waveform Inversion, in: *Encyclopedia of Exploration Geophysics*, edited by Grechka, V. and Wapenaar, K., pp. R1–R1–40, Society of Exploration Geophysics, <http://library.seg.org/doi/abs/10.1190/1.9781560803027.entry6>, 2017.
- 25 Woodward, M. J., Nichols, D., Zdraveva, O., Whitfield, P., and Johns, T.: A decade of tomography, *Geophysics*, 73(5), VE5–VE11, 2008.
- Yamada, Y., Baba, K., Miyakawa, A., and Matsuoka, T.: Granular experiments of thrust wedges: Insights relevant to methane hydrate exploration at the Nankai accretionary prism, *Marine and Petroleum Geology*, 51, 34–48, <https://doi.org/10.1016/j.marpetgeo.2013.11.008>, 2014.
- 30 Yilmaz, O.: *Seismic data analysis, Society of Exploration Geophysicists: processing, inversion and interpretation of seismic data*, 2001.
- Zelt, C. and Barton, P. J.: Three-dimensional seismic refraction tomography: a comparison of two methods applied to data from the Faeroe Basin, *Journal of Geophysical Research*, 103, 7187–7210, 1998.
- Zhou, W., Brossier, R., Operto, S., and Virieux, J.: Full waveform inversion of diving & reflected waves for velocity model building with impedance inversion based on scale separation, *Geophysical Journal International*, 202, 1535–1554, <https://doi.org/10.1093/gji/ggv228>, 2015.
- 35

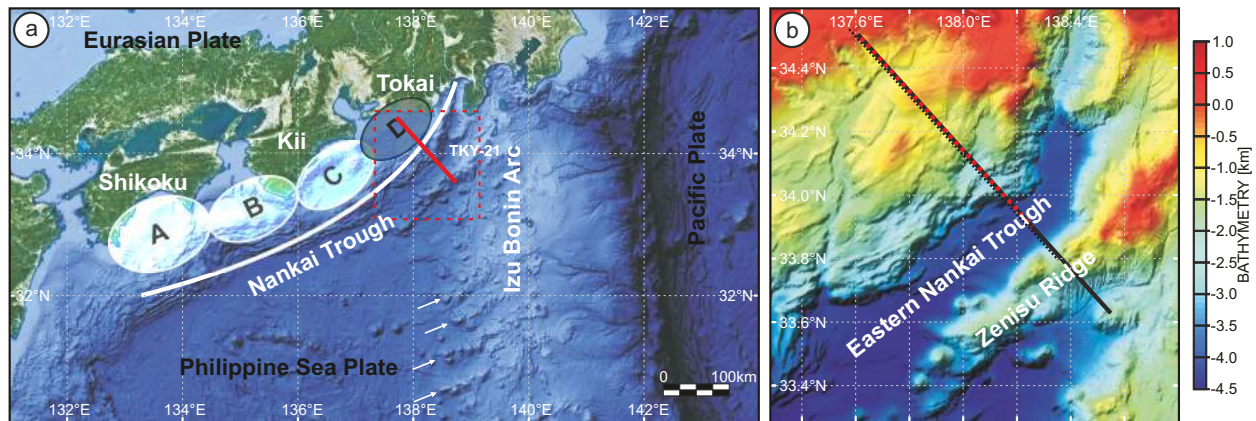


Figure 1. (a) Partitioning of the Nankai Trough into four segments as described by Ando (1975). Region D was left unruptured during the most recent sequence of two large earthquakes (1944 Tonankai and 1946 Nankaido). The solid red line represents the seismic profile of the SFJ-OBS experiment. White arrows mark the cyclic volcanic ridges developing on the flank of Izu Bonin Arc. (b) Zoomed view of the survey area, overlaid with the bathymetry variations. The solid grey line and the dashed red line represent the OBS shot and receiver profile respectively, while the dashed black line corresponds to the MCS profile (Górszczyk et al., 2017).

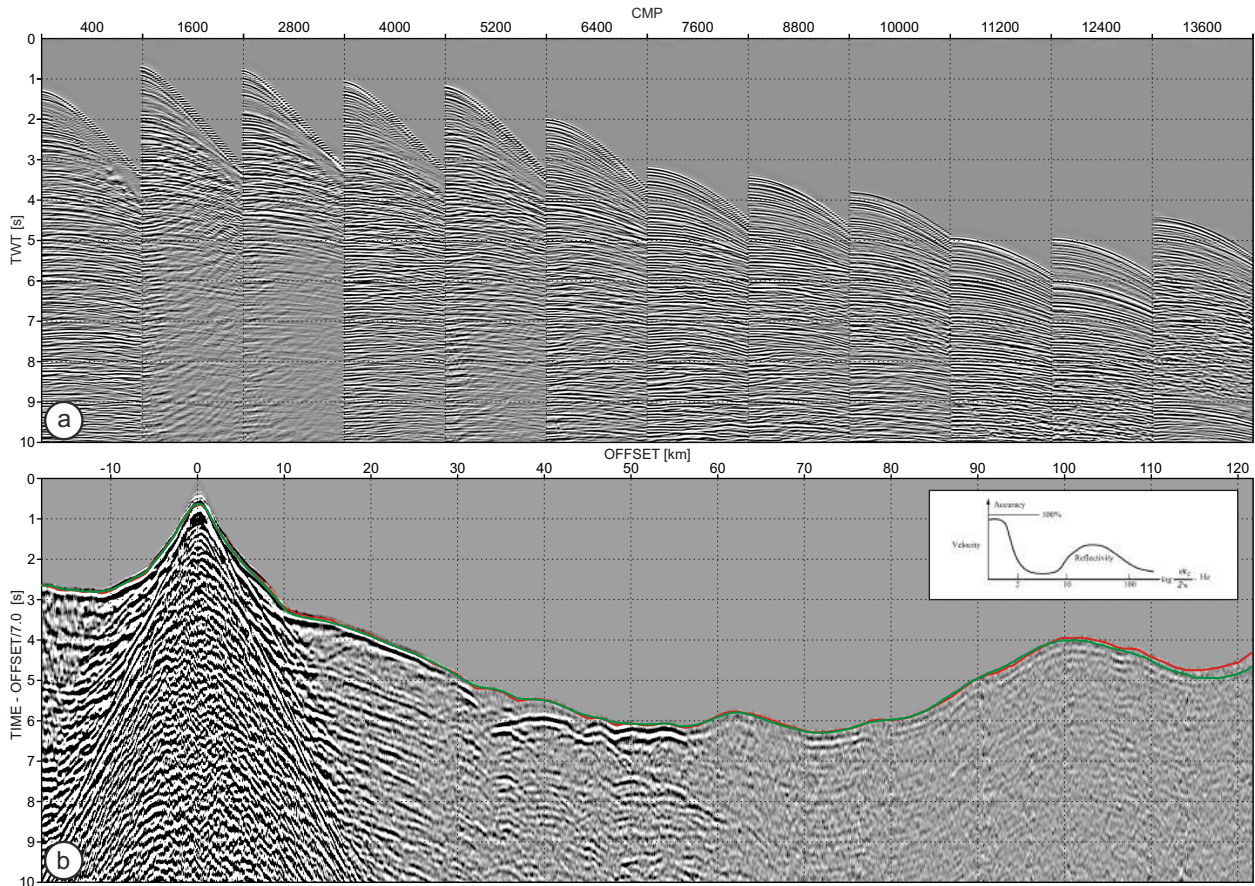


Figure 2. (a) Example of MCS data sorted in CMP gathers extracted along the whole profile. Each 1200th CMP gather is displayed. (b) Example of single OBS gather. The red and green lines show picked and synthetic traveltimes, these later being computed in the FAT velocity model. The match between the two lines gives some insight on the kinematic accuracy that may need to be achieved to prevent **eye skipping** during subsequent FWI. Note also the challenging picking of first arrivals between 35km and 45km offset, where weak-amplitude first arrivals correspond to head waves that propagate along a thrust in the backstop. See Górszczyk et al. (2017) for details. Inset in (b) presents resolution gap between tomographic velocity models and migrations images (Fig.1.13 of Claerbout, 1985)

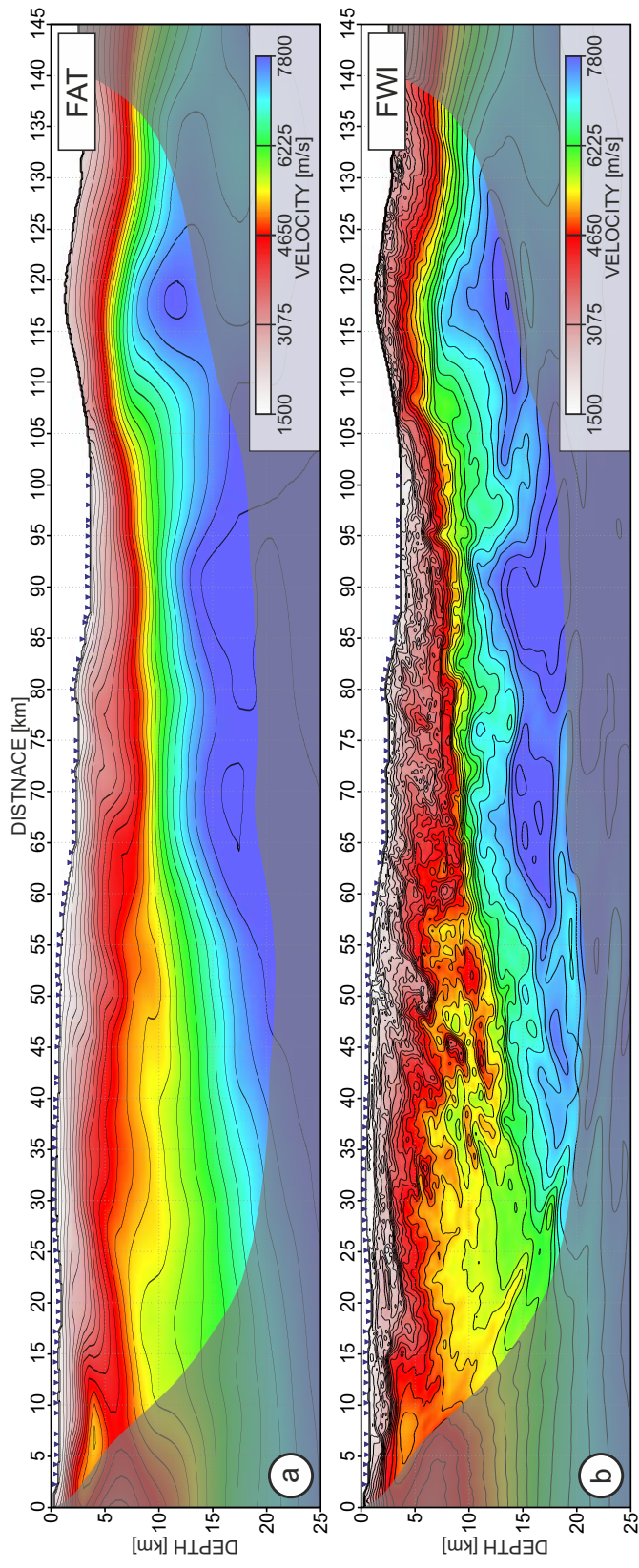


Figure 3. Velocity models derived from the OBS data using FAT (a), and FWI (b). Triangles at the seafloor represent positions of the OBSs. [Note that there is no OBS coverage above 102 km distance. Shading mask corresponds to the area not covered by first arrival rays.](#)

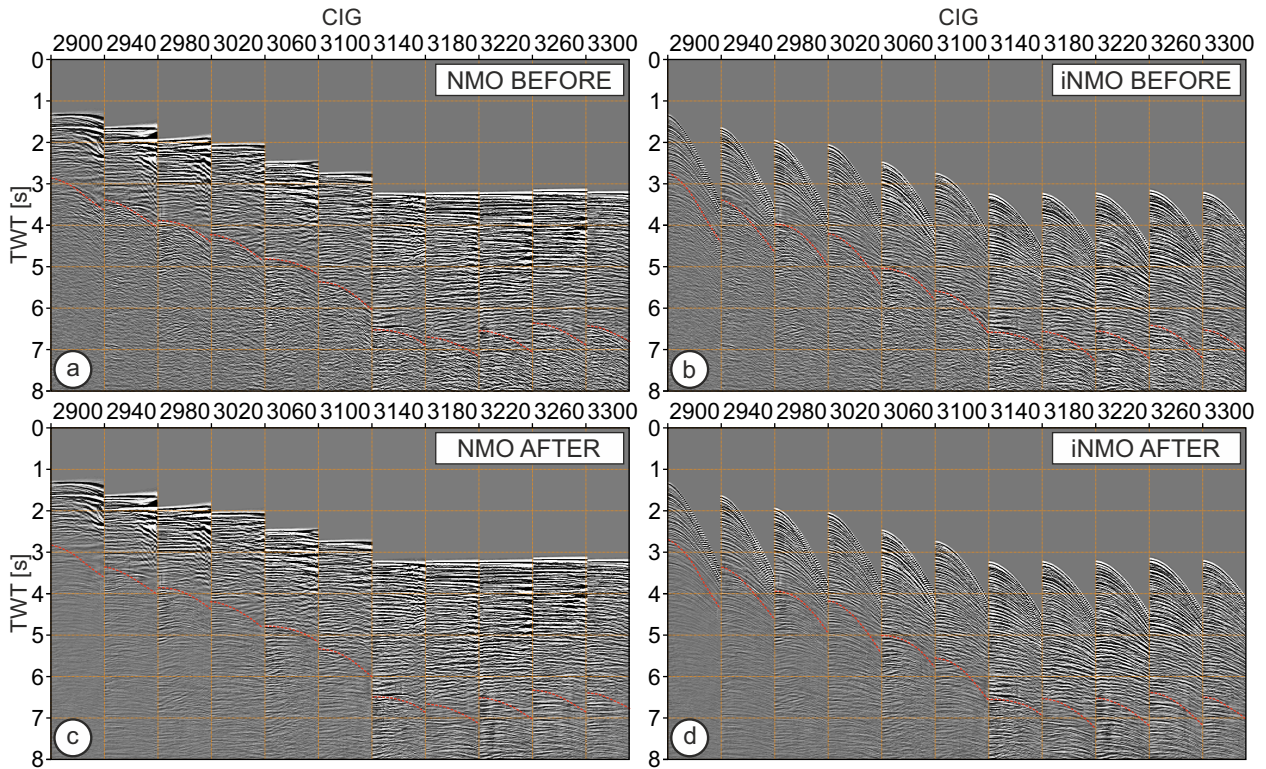


Figure 4. **CIG-CIGs** converted to time domain (a-b) before and (c-d) after Radon multiple attenuation. Gathers in (a-c) are NMO-corrected while gathers in (b-d) have inverse NMO applied. Red dashed curves delineate the estimated position of the multiples.

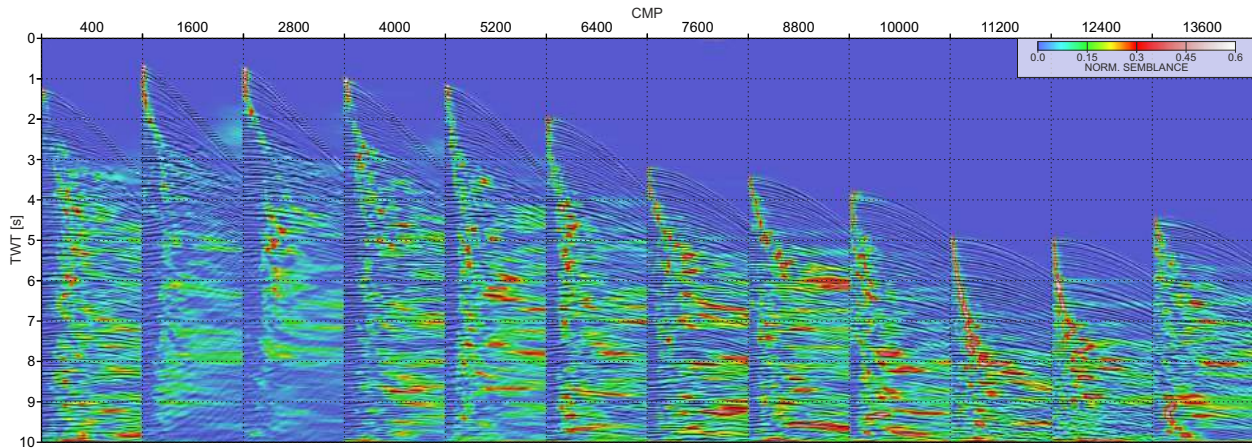


Figure 5. Panels presenting results of semblance-based velocity analysis performed on gathers presented in Fig. 2a.

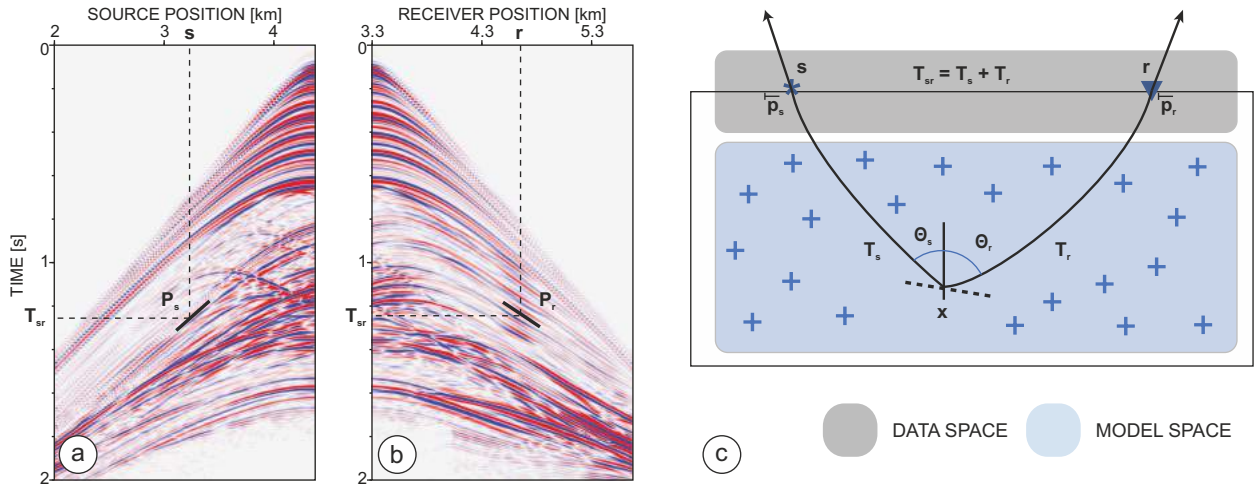


Figure 6. Local coherent events picked for ST. Each local coherent event is described by the source and receiver positions (\mathbf{s} , \mathbf{r}), the slopes (\mathbf{P}_s , \mathbf{P}_r) picked in (a) common-shot and (b) common-receiver gathers and two-way traveltime \mathbf{T}_{sr} . (c) Data space and model space in ST. The symbols + denote the velocity nodes. Two rays are shot toward the source \mathbf{s} and receiver \mathbf{r} from the scatterer \mathbf{x} with take-off angles Θ_s and Θ_r corresponding to one-way traveltimes \mathbf{T}_s and \mathbf{T}_r . The velocity model, the scatterer coordinates \mathbf{x} and the ray attributes (Θ_s , Θ_r , \mathbf{T}_s and \mathbf{T}_r) form the **model space** of classical ST. The scatterer position \mathbf{x} and the two take-off angles (Θ_s , Θ_r) define a dip (migration facet). The horizontal component of the slowness vectors at the source and receiver positions, \mathbf{p}_s and \mathbf{p}_r , the two-way traveltime \mathbf{T}_{sr} and the source and receiver positions (\mathbf{s} , \mathbf{r}) form the **data space** of the classical ST (adapted from (Tavakoli F. et al., 2017))

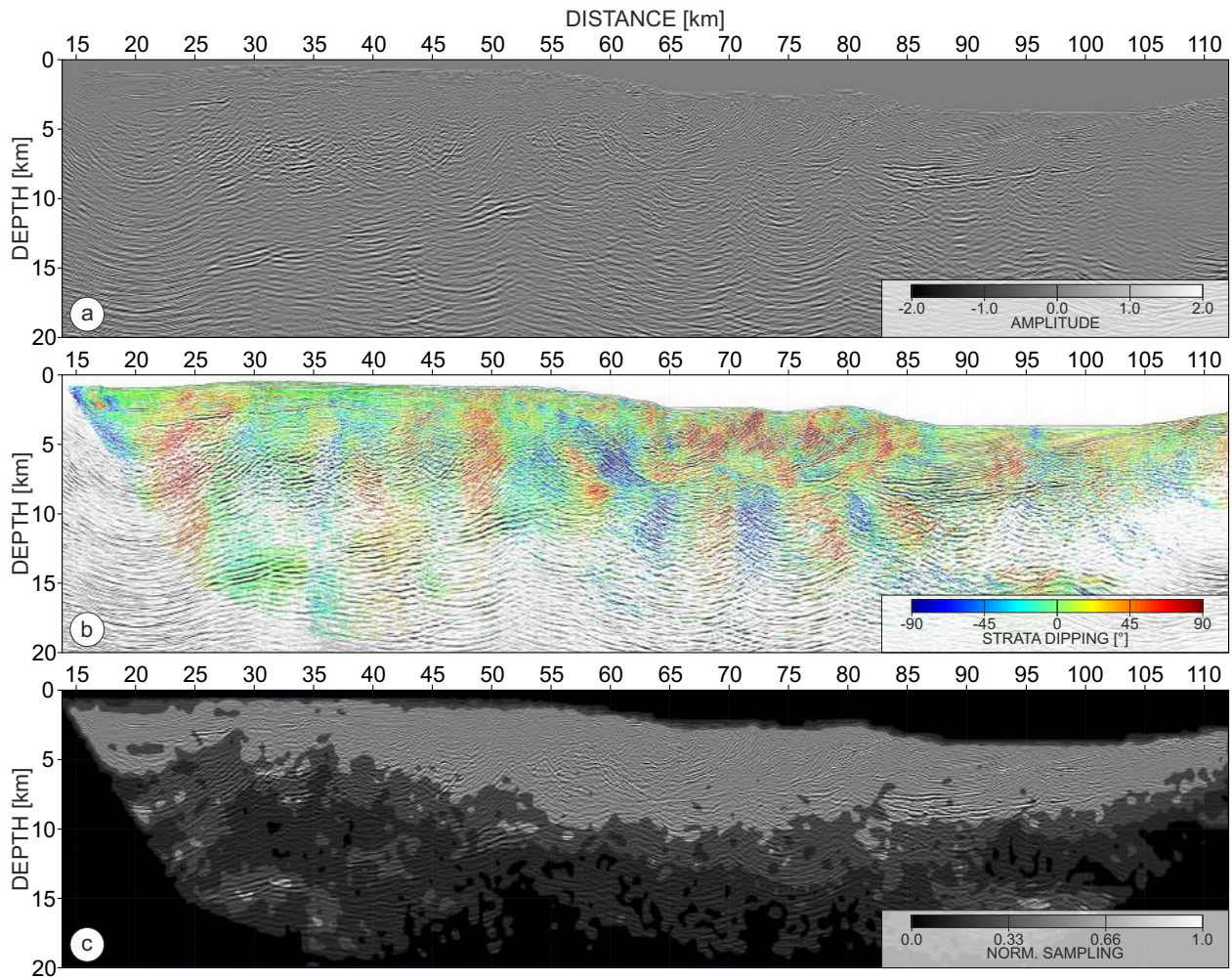


Figure 7. (a) PSDM section inferred from the FWI velocity model. (b) Cloud of the scattering points corresponding to picked slopes. Colours represent estimated dipping of the interfaces. (c) Normalized average sampling of the model space by the scattering points superimposed over the PSDM section from (a).

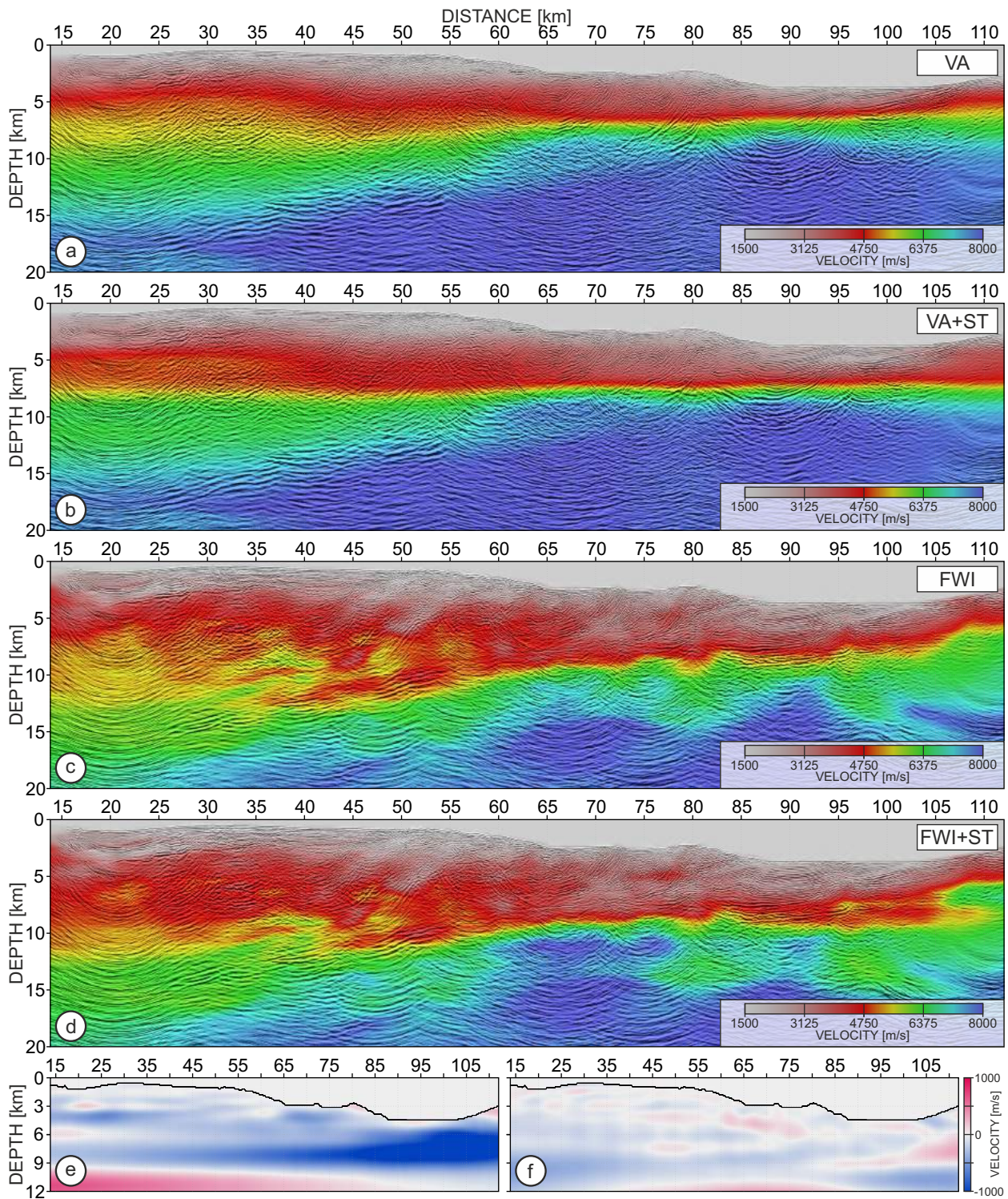


Figure 8. PSDM sections inferred from the (a) VA, (b) VA+ST, (c) FWI and (d) FWI+ST velocity models displayed in the background. Velocity perturbations introduced by ST into the (e) VA and (f) FWI velocity models.

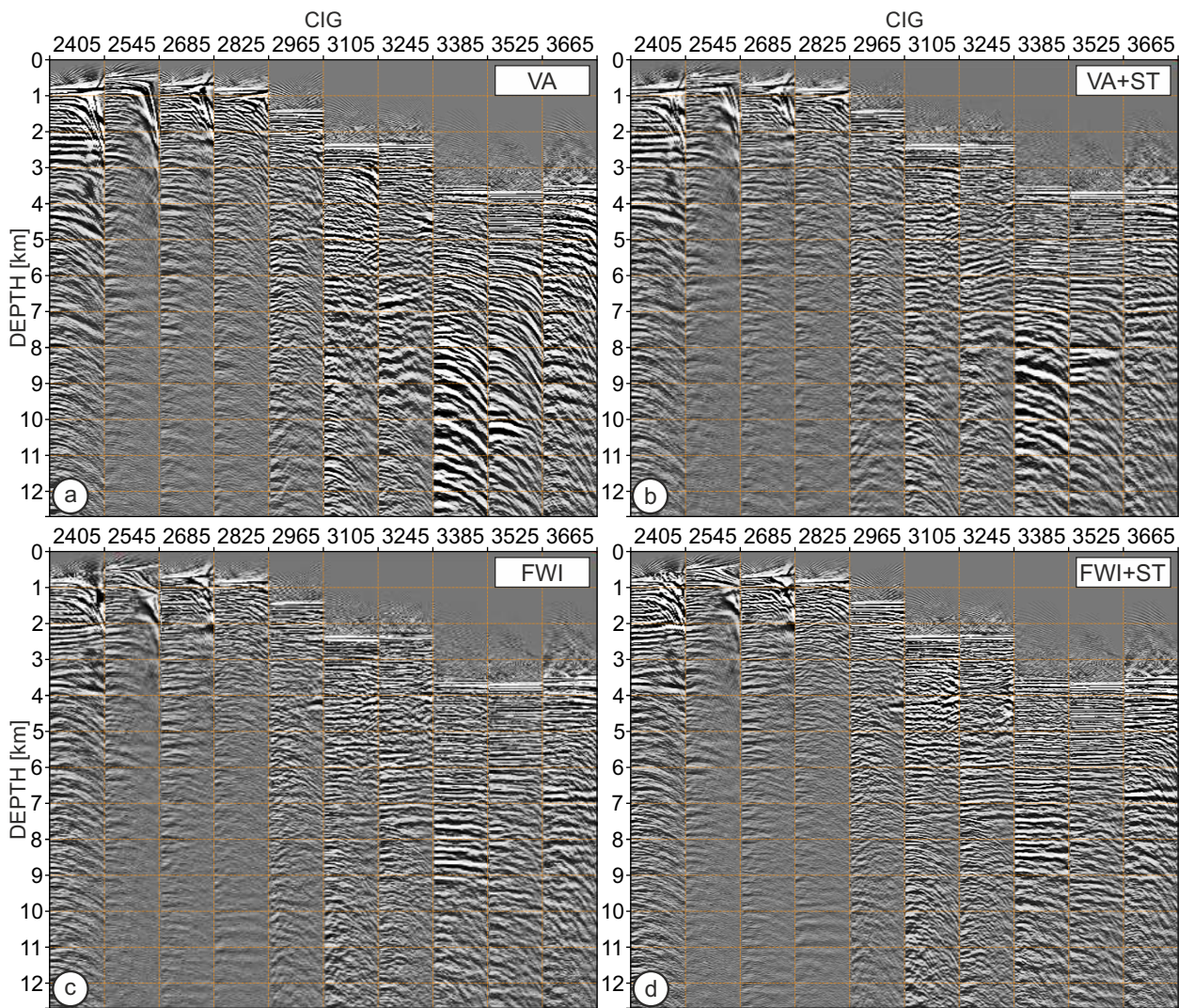


Figure 9. CIGs extracted along the whole profile ([at each 8.75 km](#)). (a-b) CIGs inferred from the velocity model built by (a) VA and (b) VA+ST. (c-d) CIGs inferred from the (c) FWI and (d) FWI+ST velocity models.

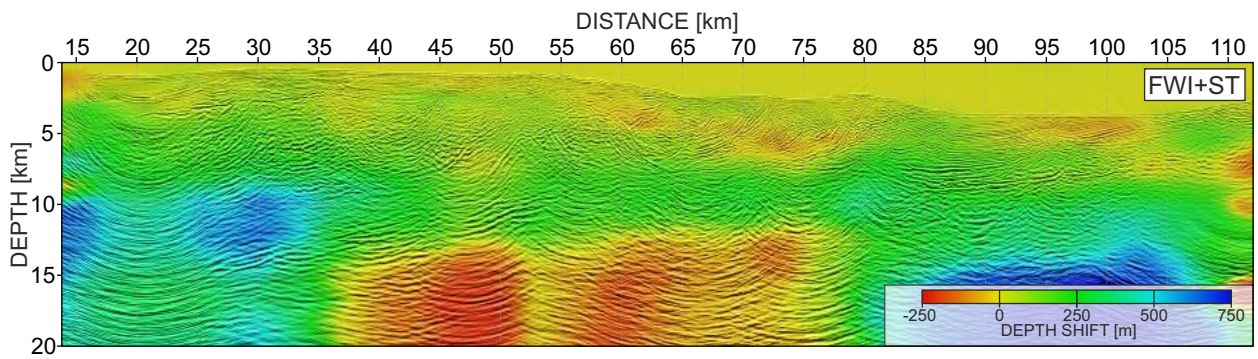


Figure 10. PSDM section inferred from the FWI+ST velocity model overlaid on the estimated depth-shifts. Positive and negative values correspond to up-shifts and down-shifts introduced in the PSDM section by FWI+ST velocities relative to the FWI velocities, respectively. Note nonsymmetric color-scale.

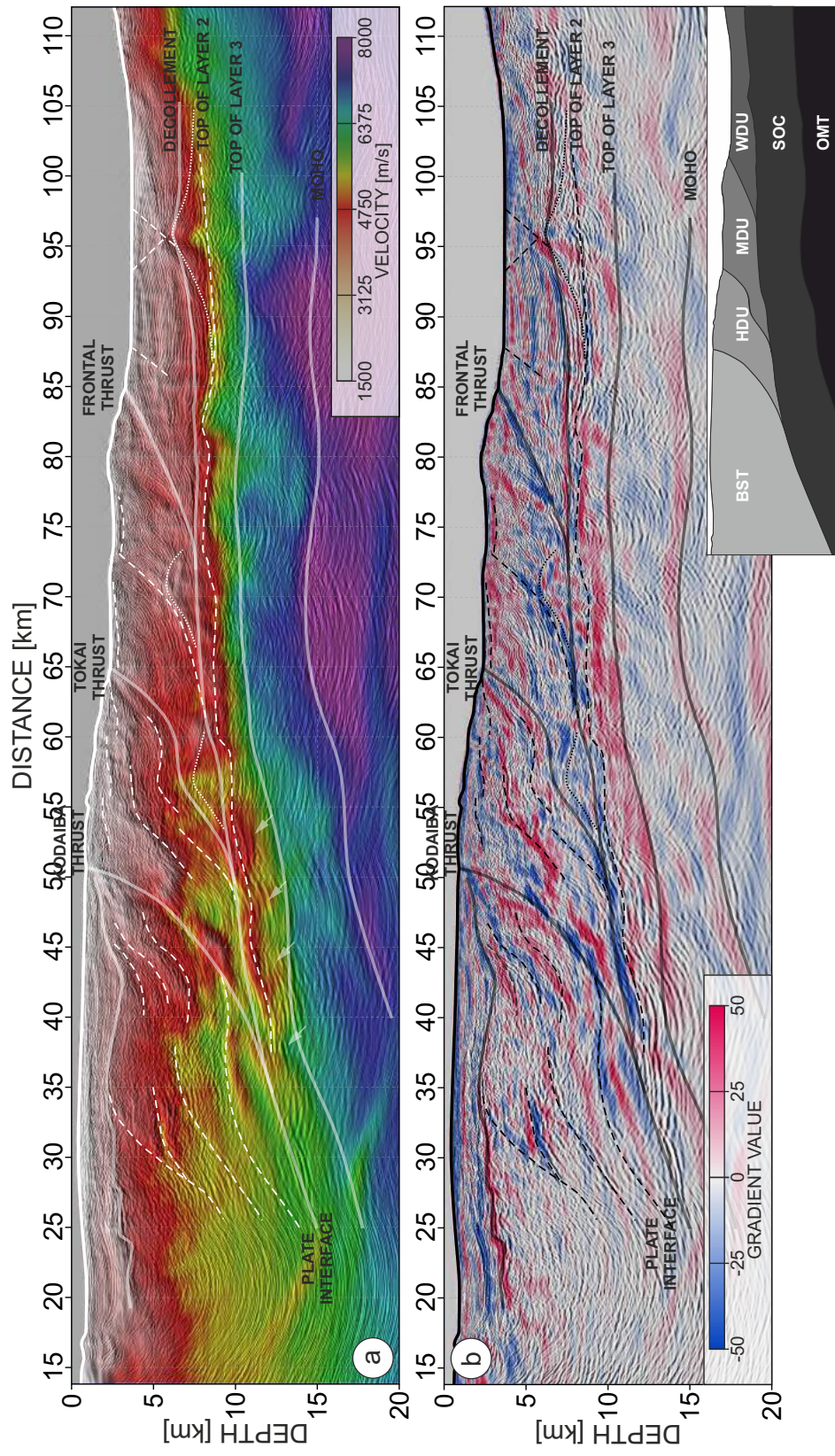


Figure 11. Imaging results and structural interpretation. Migrated section superimposed on: (a) FWI +ST-velocity model blended with average vertical and horizontal velocity gradient; (b) Average vertical and horizontal velocity gradient of FWI model. Inset presents different geological block-segments: **OMT** - oceanic mantle; **SOC** - subducting oceanic crust; **WDU** - weakly deformed unit; **MDU** - moderately deformed unit; **HDU** - heavily deformed unit; **BST** - backstop;

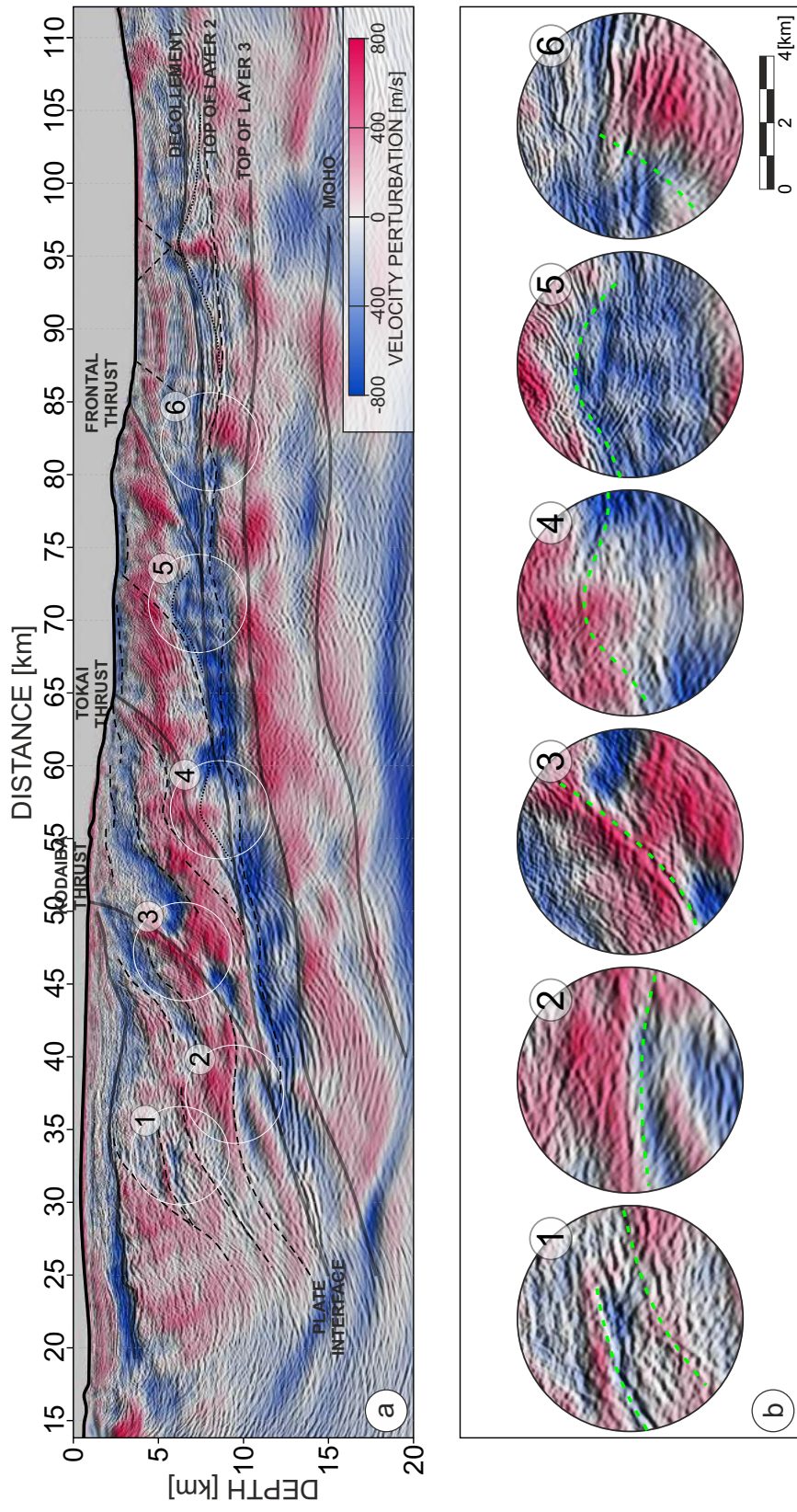


Figure 12. Imaging results and structural interpretation. (a) Migrated section superimposed on de-trended version of FWI velocity model, blended with average vertical and horizontal velocity gradient. (b) Zoom-panels corresponding to the circles 1-6 in Fig. 12 (a). Green dashed lines underline the consistency between reflectivity and background velocity perturbations.

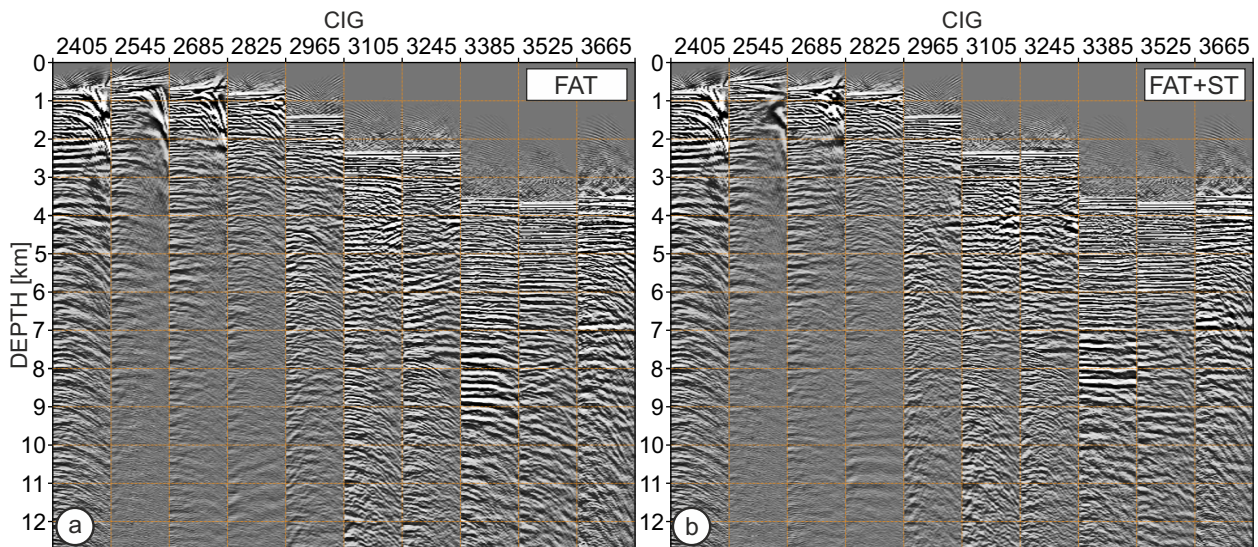


Figure 13. CIGs extracted along the whole profile (the same as in Fig. 9), inferred from the velocity model built by (a) FAT and (b) FAT+ST.

Table 1. Processing sequence of SFJ-MCS data.

1	Reformatting
2	Assign marine 2D geometry
3	2.5 Hz low-cut filter
4	Spherical Divergence Compensation
5	Swell Noise Attenuation
6	Trace editing and interpolation
7	Seismic Interference Attenuation
8	Debubbling & Zero-Phasing
9	Linear Noise Attenuation
10	Cable & Gun correction - SOD
11	Source and Receiver Deghosting
12	2D SRME
13	Radon Demultiple
14	Velocity analysis
15	Kirchhoff PreSDM
16	RMO picking
17	Non Linear Slope Tomography