

Dear Editor,

Thank you for the chance to revise our paper.

These are the main changes we made, all in response to questions from both reviewers. Detailed responses to each of the reviewers' comments can be found below.

- To illustrate the evolution of asthenosphere viscosity and velocity to help the discussion of how drag evolves as these two parameters evolve, we added Figure S2-3 (Note that we moved all the appendices to the supplementary material).
- We added further motivation for the used equation for estimating drag, for evaluating drag relative to the main driving force (slab pull), and more information on how parameters for drag estimates in the model were measured (including information marked on the new Figure S2-3).
- We explain better that the correlation between plate size and age is a feature of the Cenozoic plate configuration, not a causal relationship.
- We fixed some copying errors in the table entries of the analytical estimates of Pacific and Cocos plate drag.

We thank **Referee #1** for their positive feedback and their constructive comments. We considered each comment and revised the manuscript accordingly. Please see below our responses to each comment (in blue, with changes made in *italics*) and the annotated manuscript for the revisions.

1. *Many times in the introduction the authors talk about the viscosity of the asthenosphere and the ratio between lithosphere-asthenosphere viscosity as 'high' or 'low' or 'too low'. Since this is a crucial part of the paper, I think the author should describe this in a more quantitative manner (i.e., mention some estimates with actual numbers suggested by the cited literature). This is true also throughout the rest of the manuscript, even in the results where the viscosity values are easily to extract from the models (e.g., lines 223-224). The same for the conclusions: e.g. line 441-443 "Models with a low-viscosity asthenosphere do reduce the contribution of trench motion to plate convergence to more Earth-like values, as observed in previous studies". How low? Which values range are we talking about?*
We agree that it is useful to add some more numbers. Many previous models considered ratios of effective lithosphere-asthenosphere viscosities of a factor 100-1000 (with reference asthenospheric viscosities of 10^{21} to 10^{20} Pa s). Weak asthenosphere models tend to have viscosity ratios of 10^3 to 10^4 (for reference asthenospheric viscosities of 10^{20} to 10^{19} Pa s), which when these are the outcome of non-linear composite rheology still allows for viable subduction. We now added these numbers plus references to the introduction for context (line 53-55, 71-73 and 85). The values used in the models are discussed and motivated with references in the last paragraph of the 'Methods' section (lines 157-166). We added a new supplementary figure (Fig. S2.3) that displays the evolution of viscosity through time for the long and short reference models along the profile that is used for basal drag calculations. And we include numbers for the viscosity ratios in our models in the conclusions (lines 462 and 468)
2. *Following the previous point, I would be curious to see the evolution of the viscosity of the asthenosphere in Fig. 4 (or in the Supplementary). The reason for this is that I have a few doubts on (1) the effect of the used methodology and (2) the effect of plate velocity on the viscosity of the asthenosphere and a figure that shows it would likely clear them out. In particular: (1) Regarding the methodology. The viscosity of the asthenosphere is weakened by multiplying the computed viscosity by a factor of 0.5. However, the computed viscosity is a combination of diffusion, dislocation and Pierels creep, thus, it is strain dependent. When lowering the viscosity by a factor 0.5, the stresses in the asthenosphere will be lower too and the viscosity will want to be higher again at the next time step. Is that what happen? Or does it more or less stabilize? (2) Several times the authors say that because the velocity of a plate increases then the basal drag increases too. However, wouldn't the viscosity of the asthenosphere decrease with high plate velocities due to larger deformation? If so, the basal drag would decrease too or is there something else in Eq. 1 that also changes to compensate a decrease of η_{Ast} ?*
 - (1) *Indeed, the viscosity is strain-rate dependent. The lowering of viscosity by a factor 0.5 leads to increased velocities. Increased velocities are associated with increased strain rate, and lead to a feedback that results in further lowering (rather than increasing) of viscosity. The net effect of the scaling is a reduction of viscosity by more than the applied scaling factor. We write: "The compound effect of applying the 0.5 reduction factor and consequent strain-rate weakening is an order of magnitude decrease in asthenospheric viscosity compared to the reference models."*
 - (2) *The viscosity of the asthenosphere will tend to decrease with higher velocity (if this leads to higher strain rates), reducing the basal drag. However, the direct effect of increased velocity is an increase in drag, which can dominate over the effect of the lowering of viscosity. This happens in the reference case short-plate models, around the time the plates reach 660 (t660), and in the weak asthenosphere long-plate models around t660. The two effect of increased velocity, direct and on viscosity, is also the reason that the plate velocity graph and the basal drag graph do not always show the same trends. We now discuss this non-linearity in our presentation of the reference models and added a graph showing the evolution of the viscosity and velocity to the supplementary material: "Note that due to the*

nonlinear feedbacks in the models, there are about 10 Myr right after the plates reach the ULMB where the short plate experiences a higher drag than the long plate. These relatively high drag values for the short plate are a consequence of the high velocities that the short plate attains in response to the initially significantly lower drag (Fig. S2.3)."

3. *I do not fully understand the reasoning in the Discussion about the correlation between plate size and age at the trench (Fig. 8B). A larger plate would have ridges further away from trenches (e.g., Pacific vs. Cocos) and therefore more likely to have older lithosphere at trenches, could it not be 'that simple' without the need to use the basal drag as explanation?*

The correlation of size and age is an observation. Such a correlation might be expected if spreading rate is relatively constant. However, closer examination of the plate reconstruction reveals a more complex picture of changing spreading rates, subducting ridges, changing trench retreat rates and plate geometry that eventually determine plate size and trench age.

We use this observation to argue that larger plates tend to have a stronger driving force. Increased basal drag with increasing plate size can explain that larger plates are not observed to reach systematically higher velocities. This explanation only applies to the Cenozoic where plate size and age of the subducting plate are correlated.

We changed some of the phrasing in the revised manuscript to make it clear these are separate observations. In the discussion we write: "A consequence of the observed correlation of average age at the trench and plate size is that plates with a stronger slab pull tend to also have larger surface area and hence a stronger resisting basal drag. This provides a mechanism that offsets the velocity-enhancing effect of larger driving forces of old plates, and could explain the observation that velocities of subducting plates on Earth, today and throughout the Cenozoic, do not increase with age but tend to be mostly stable around 8-10 cm/yr".

We also write in the discussion: "Note that the relation between age and size is not a causal relationship, but a feature of the plate configuration that has dominated most of the Cenozoic. Early in the Cenozoic, there are several cases that deviate from the buffered velocity trend. At the start of the Cenozoic, much of the subduction surrounding the Pacific plate consumed relatively young lithosphere, even though the Pacific plate itself was already large in size (horizontally aligned points at the top of the area–age trend in Fig. 8b). Other early Cenozoic deviations include very high velocities of the last remnants of the Izanagi and Kula plates (points with area of about 2500² km² and velocities around 17 cm/yr in Fig. 8a) and low velocities of Farallon plate (area about 6000² km² in Fig. 8a)".

In the conclusions, we reworded the last paragraph to: "Based upon an analysis of a Cenozoic plate motion reconstruction (Müller et al., 2016), we suggest that the reason that most plates move at velocities around 8-10 cm/yr is because the plate configuration during this era was such that plate size correlated with plate age at the trench, i.e., both driving and resisting forces increased together. Note however, that this correlation between size and age is not causal and may not have existed in other times of Earth history. As a result, during the Cenozoic, the increase in basal drag more or less balanced the increase in plate velocity induced by increased slab pull with increasing age. Such co-variations between plate velocity, age and size should be considered in regional models of subduction systems"

4. *The authors should discuss how their results and conclusions could be affected by viscous anisotropy? From Becker and Kawakatsu, GRL, 2011: "One of the major limitations of our study is that we only considered a few instantaneous flow examples for which the influence of anisotropy may overall be negligible. This only indirectly addresses more complex, evolving scenarios such as changes in plate motions, or plate boundary dynamics, where mechanical anisotropy may well be relevant." Viscous anisotropy has the potential to have an important effect when looking at plate velocities during the Cenozoic as the authors do here because changes in plate motion direction would change the orientation of the anisotropy and could contribute to change the asthenosphere viscosity (hence, basal drag). I understand that this cannot be included in the calculations, but I think it deserves to be mentioned and discussed.*

We now clarify that other factors may contribute to viscosity when we introduce our choice of rheology in the methods: "We use a temperature-, pressure- and strain-rate dependent composite rheology, which naturally results in a lithosphere and asthenosphere. Other factors may contribute to the contrast between lithosphere and asthenosphere viscosity, e.g. hydration, partial melt and anisotropy (e.g., Hirth and Kohlstedt, 1996; Becker and Kawakatsu, 2011). Here, we consider diffusion and dislocation creep mechanisms, combined with a low-pressure yield-stress mechanism to approximate brittle failure and an approximation of Peierls low-temperature plasticity at high pressure (e.g. Čížková et al., 2002; Garel et al., 2014). Equations and parameters for the reference cases are as in Garel et al. 2014 and are given in Table S1.1. We vary parameters, as discussed below, to evaluate different relative lithosphere and asthenosphere viscosities."

5. *I think the first paragraph of Conclusions belongs to the Discussion. Consider moving it there.*
The first paragraph of the conclusions is a recap of the motivation for the study previously outlined in the introduction. We think it belongs in the conclusions section rather than the discussion section but hope that with our other clarifications of the introduction, discussion and conclusions this organisation makes more sense.

6. *Eq. 1 and 2. How is the lithosphere defined? Is it defined by the 1100 degC isotherm? Please specify it, since it matters for parameters like h_{Lit} , h_{Ast} , and S_{slab} . (I found the answer later on in the lines 144-145, but the authors might want to either repeat it or move it here where the variables of the equations are explained). At what depth is S_{slab} taken? And is it an horizontal section or perpendicular to the slab? Given the importance of these calculations for the study, I would suggest to have a figure with a schematic cartoon of a model showing where and how all the variables used in Eq. 1 and 2 are taken. It could go in the main manuscript, in the supplementary material, or merged with Fig. 2.*
The lithosphere is defined as the part of the model that is colder than 1100°C. This does mean the thickness of the lithosphere and asthenosphere evolves with time. It is mentioned in the 'Model set-up' section, on Figure 2 and in the caption for Figure 2. S_{slab} is calculated as the surface of a rectangle with one side the length of the slab (as explained in lines 204-206), and the other side the width of the slab, taken as a horizontal line across the slab at 220 km depth. We now improved the description of the parameters of Eq. 1 and Eq. 2 in the revised manuscript and added a figure in the supplementary material (Figure S2.3) where we also mark where some of the key parameters were measured.

7. *Table 1. Why is the slab pull force (and the basal drag) for the Cocos plate one order of magnitude larger than for the Pacific? Shouldn't it be the opposite? Please check your calculations. U is the plate velocity, what is ΔU (used in Eq.1)? S should be S_{plate} (as referred to in the text). Is $V_{slab} = S_{slab} \cdot L_{trench}$ or $S_{slab} \cdot L_{trench} \cdot W_{slab}$?*
Thanks for catching this error. There was a copying error in the table (the values of the forces were copied to the wrong row in the table). V_{slab} is calculated as $L_{slab} \cdot L_{trench} \cdot W_{slab}$ where L_{slab} is assumed to be 700 km (lines 364-365). After re-examining the calculation, we found that there was a missing factor 2 for the drag force. We corrected the mistake, the calculation, the corresponding text and expanded the description of V_{slab} in the revised manuscript.

8. *Fig. C1: at the moment this figure is confusing. A better layout could be with each column showing a parameter. And also using more distinct colormaps for age and subduction velocity (now they are very similar). Also the colours of the different subduction zones are different from those used in the other figures (Fig. 1, 8, C2). When possible, I would suggest to keep them the same.*
We changed the figure in the revised manuscript according to the comment.

9. *Technical corrections Line 331: odd sentence, rephrase. Line 338: Other approximations in addition to what? Line 401: "tend to be mostly fall around..." delete 'be' or 'fall'*
We changed the sentences in the revised manuscript according to the comments.

We thank Ömer Bodur (**Referee #2**) for the detailed feedback and comments. We considered the comments carefully and revised the manuscript accordingly. Please find our replies to the comments in the following section (in blue, with changes made in *italics*) and see the annotated manuscript for changes to the text.

1. *I do find the arguments about linking slab strength to trench advance/retreat convincing and important. However, I do have concern that the analysis of the numerical models might have been done with partial ignorance of the forces (mostly resistive) acting on the subducting plate (Solomon and Sleep, 1974; Forsyth and Uyeda, 1975), henceforth limiting our understanding of how basal drag solely affects the whole plate subduction system. For example, the drag around the sinking slab (i.e. slab resistance) must also be acting along with basal drag and this has not been considered in the analysis so that the readers cannot separate the contribution of each. Therefore, it's not clear if it's the basal drag component itself driving the changes in plate velocity and slab morphology. Similarly, once the slab dip is small and there is longer slab sinking into the mantle, analysis of relative significance of basal drag to the slab pull can be misleading because slab resistance is not taken into account with the increased slab area (i.e. slab interface in 2D) although it was considered for slab pull. The arguments of force balance cannot be reduced only to basal drag and slab pull as other forces also act and vary in time in the numerical model.*

We agree that the force balance cannot be reduced to basal drag and slab pull. However, we make a different argument in the text. We show, throughout the evolution of the model, how much of the slab pull is resisted by basal drag. We do not make the point that the evolution of velocity and slab morphology is controlled solely by these two forces, nor do we try to show the full force balance acting on the plate and slab throughout the evolution. By referring to the ratio of basal drag to slab pull, we can compare the significance of basal drag in the subduction process to other forces, such as viscous dissipation and ridge push, which have been examined against slab pull in previous studies. *We discuss the range of forces that contribute in the second paragraph of the introduction and have now worded this more clearly when we introduce the equations used to estimate basal drag and slab pull: "To evaluate the relative importance of basal drag in the overall force balance, we estimate basal drag below the subducting plate for each time step in the models, and compare it to the main driving force, slab pull."*

2. *Equally important, some of the model results contradict with what the paper proposes throughout the text. For example, in the numerical experiments, a decrease in asthenosphere viscosity results in an increase in relative basal drag right after (for about 10 Myr) the plate has sunk to 660 km depth (comparing light red line with green line in Fig 6d). This is contrary to what is expected and needs clarification well before addressing other effects of basal drag (e.g. slab morphology).*

Indeed, the non-linear feedbacks in the models sometimes cause unexpected results. In this case, the lower viscosity of the asthenosphere leads to high velocities which by the time the plate reaches 660, mean that the long-plate model with lower viscosity asthenosphere, briefly (~ 10 Ma) experiences a higher drag than the reference case with higher asthenospheric viscosity at this same stage of the model. However, in spite of the complexities in how basal drag evolves, all results are consistent with the conclusion that basal drag is important.

We added a short discussion of this to the description of the Reference models in the Results section in the revised manuscript: "Note that due to the nonlinear feedbacks in the models, there are about 10 Myr right after the plates reach the ULMB where the short plate experiences a higher drag than the long plate. These relatively high drag values for the short plate are a consequence of the high velocities that the short plate attains in response to the initially significantly lower drag (Fig. S2-3)."

3. *The authors use a derived equation to estimate the slab pull and basal drag forces over time. These equations are (Eqn. 1, 2), most likely, valid only for iso-viscous plate and asthenosphere, and therefore may not be suitable to apply on the numerical modelling results. The authors also need to be cautious about necking of the subducting plate which results in significantly lower viscosities at the subducting plate as can be seen in Figure 3. This means, the slab pull force cannot act efficiently on the unsubducted part of the plate, hence an interpretation of the relative strength of basal drag and slab pull may become misinforming.*

Indeed Eq. 1 and 2 approximate the forces. In theory one could integrate over velocity, viscosity and density fields for more detailed measurements. However, this too would involve assumptions in choosing the boundary of the driving lithosphere and resisting asthenosphere, and a more non-linear dependence on those choices. We found the approximate solution illustrates model behaviour well enough. Due to our adaptive mesh, we are able to resolve the strong core of the plate even if it is thin. Note that the minimum element size is 0.4 km, as noted in the text, which allows us to resolve a thin strong core, which may not be clearly reflected on the colour scale in Fig. 3 (but illustrated clearly in figures in Garel et al., 2014). This means that stress is always quite effectively transmitted from the surface plate to the slab and from the slab to the plate. In all of the results we analysed, we found that the viscosity in the bulk of the slab was at least an order of magnitude higher than the surrounding mantle

We added a mention of this where the equations are introduced in the revised manuscript. “Note that the expression for F_{SP} assumes stresses are effectively transmitted from the slab to the plate, which is appropriate because the adaptive grids of our models ensure we always resolve the strong slab core, even when it is quite thin (Garel et al., 2014)”.

4. *Abstract: It's worth briefly indicating why the force balance in subduction dynamics is incompletely understood (e.g. fails to explain plate velocity?) I think the force balance, or the method itself, is not to blame, but the contributions to the force balance by different forces are quite uncertain. This should be made clear.*

We reworded this sentence to “Subducting slabs are an important driver of plate motions, yet the relative importance of different forces in governing subduction motions and styles remains incompletely understood.”

5. *[Lines: 140-150]: The lithosphere has a number of definitions and one of which is by viscosity profile (e.g. (Conrad and Molnar, 1997). In numerical models, the viscosities will vary and the effective lithospheric thickness that you have used in the estimation of basal drag will also change accordingly (Bodur and Rey, 2019).*

That is indeed the case in our models. We use the 1100 °C isotherm as the base of the lithosphere. The depth and shape of the isotherm changes with time and the thickness of the lithosphere changes with it. To account for that in the drag calculation, we measure the thickness at a given from the trench at each time step. The process is detailed in lines 200-204, and new supplementary Figure S2.3 illustrates the evolution of various parameters, including the thickness of the lithosphere, through time, for the reference model.

6. *[Lines 158-160]: Please justify why avoiding any slab detachment during subduction is favoured. If the model results are only applicable to plates not showing slab detachment, then this should be mentioned early in the text or in the abstract. It's important to acknowledge that slab detachment has been used to explain important features of the Earth (Göğüş and Psyklywec, 2008; Duretz and Gerya, 2013; Hacker and Gerya, 2013)*

Our aim in this paper is to model basic continuous subduction behaviour. Slab detachment is the terminal stage of subduction, which has been observed in different settings than ocean-ocean subduction (e.g. continental collision, subduction of continental fragments or seamounts, etc.

See examples in Hacker and Gerya, 2013). We therefore aim for a rheology that allows continued subduction rather than slab detachment, or subduction freeze.

We added this explanation to the Model Set-Up section in the revised manuscript: “With this range of lithospheric and asthenospheric viscosities, we can generate continuous Earth-like oceanic style subduction while avoiding immediate slab detachments which result from lithospheric weakening due to high strain rates, or the stalling of subduction due to unattainable forces required for the bending of very strong lithosphere”.

7. [Eqn1]: Please provide the derivation of the equation for basal drag and/or the page # of the citation you provided.

The equation is based on Eq. (6.24) in section 6.3, Page 419, Turcotte, D. L. and Schubert, G.: Geodynamics, 2nd ed., Cambridge University Press, Cambridge. Available from: <http://dx.doi.org/10.1017/CBO9780511807442>, 2002. *We added the section number to the reference in the text and include the doi link in the reference list.*

8. Section 4.3 [Lines 364-365]: The slab dip you consider here is quite higher than numerical models show. Why? It's also unclear what sort of data you have used to calculate the slab pull and basal drag estimates in Table 1. Please be more specific so that one can derive the same results individually for further reference. Also, for different plates, the asthenosphere viscosity ($\eta_{asth}=10^{19}$ Pa×s) is not necessarily the same, so you may need to consider different viscosities, at least mentioning about it. This is partly the result of copying mistake. The dip used for the calculation was 70° rather than 80°. This dip angle was chosen as it is representative for dip angles observed on Earth (Lallemand et al. 2005). It should be noted that:

- Considering a single value of slab dip angle, as well as single value for the slab width and other parameters, for a plate as varied as the Pacific cannot provide more than a first order estimation.
- The difference between considering an angle of 70° and 50° is a factor of 1.2. This is a minor uncertainty considering the estimation of slab width and other values.
- As first order estimation of forces, we think it is justified to use a single value of asthenospheric viscosity.

We corrected the error and added a statement that the calculation is used for first order approximation in the revised manuscript. And we explain that the dip used is a representative dip from a global compilation of subduction parameters.

9. [Line 391]: Although they can be correlated, Fig. 8b doesn't show subduction zone length, but the plate size vs. plate age at trench. It's better to be more specific.

Fig. 8b presents the square root of the surface area of the plate vs. trench age. The square root has units of length. In Fig. 1, plate size is displayed in terms of a typical length calculated in two different ways. The way typical length is calculated is explained in the captions. *We changed the labels of Fig. 1 and 8b to “Plate size [typical length in km]”. To avoid any confusion, we removed references to length when discussing 3D plates. It is only used when describing the results of the 2D models.*

10. [Lines: 399-401]: The correlation is weak already (based on error bars and scattered points in Fig. 8a), and the argument on explaining an already weak correlation “at least in part” is making this sentence more confusing for readers. I recommend restructuring those lines.

We rephrased this part in the revised manuscript to make our intention clearer. We explain that old plates tend to be large, and as a result their movement is resisted more. This provides a possible mechanism (which probably works in tandem with other mechanisms) to lower the

potentially high subduction velocities which are expected in plates with old and cold slabs. We removed the phrase “(at least in part)”

11. [Line 156]: $10^{24} \text{ Pa}\cdot\text{s}$ – $10^{25} \text{ Pa}\cdot\text{s}$ should be changed to $10^{24} \text{ Pa}\cdot\text{s}$ – $10^{25} \text{ Pa}\cdot\text{s}$.
[Line 383]: Fig. B1 needs to be changed to Fig. C1.

We revised the manuscript according to these comments

Effects of basal drag on subduction dynamics from 2D numerical models

Lior Suchoy¹, Saskia Goes¹, Benjamin Maunder¹, Fanny Garel², Rhodri Davies³

¹Department of Earth Science and Engineering, Imperial College of London, South Kensington Campus, London, UK

5 ²Géosciences Montpellier, Université de Montpellier, CNRS, Montpellier, France

³ Research School of Earth Sciences, Australian National University, Canberra, Australian Capital Territory, Australia

Correspondence to: Lior Suchoy (l.suchoy17@imperial.ac.uk)

Abstract. Subducting slabs are an important driver of plate motions, yet the ~~force-balance~~ relative importance of different forces in governing subduction ~~dynamics~~ motions and styles remains incompletely understood. Basal drag has been proposed to be a minor contributor to subduction forcing, because of the lack of correlation between plate size and velocity in observed and reconstructed plate motions. Furthermore, in single subduction system models, low basal drag, associated with a low ratio of asthenospheric to lithospheric viscosity, leads to subduction behaviour most consistent with the observation that trench migration velocities are generally low compared to convergence velocities. By contrast, analytical calculations and global mantle flow models indicate basal drag can be substantial. In this study, we revisit this problem by examining the drag at the base of the lithosphere, for a single subduction system, in 2D models with a free trench and composite non-linear rheology. We compare the behaviour of short and long plates for a range of asthenospheric and lithospheric rheologies. We reproduce results from previous modelling studies, including low ratios of trench over plate motions. However, we also find that any combination of asthenosphere and lithosphere viscosity that produces Earth-like subduction behaviour leads to a correlation of velocities with plate size, due to the role of basal drag. By examining Cenozoic plate motion reconstructions, we find that slab age and plate size are positively correlated: higher slab pull for older plates tends to be offset by higher basal drag below these larger plates. This, in part, explains the lack of plate velocity-size correlation in observations, despite the important role of basal drag in the subduction force-balance.

1 Introduction

It is widely agreed that the negative buoyancy of subducting slabs provides the main driving force for subduction, as well as for plate motions in general (e.g. Forsyth and Uyeda, 1975; Becker and O'Connell, 2001; Conrad and Lithgow-Bertelloni, 2002; Coltice et al., 2019). This insight has led to first-order models where slabs are treated as Stokes sinkers through a viscous mantle, which successfully produce the main density structure of the mantle and the main patterns of plate motions, assuming that surface plate motions are driven by the resulting mantle flow (e.g. Lithgow-Bertelloni and Richards, 1998; Becker and O'Connell, 2001; Conrad and Lithgow-Bertelloni, 2002). Recent global or plate-scale studies show that in some cases additional forcing by mantle plumes and ~~background~~ consequent mantle flow (leading to active drag) may also play a

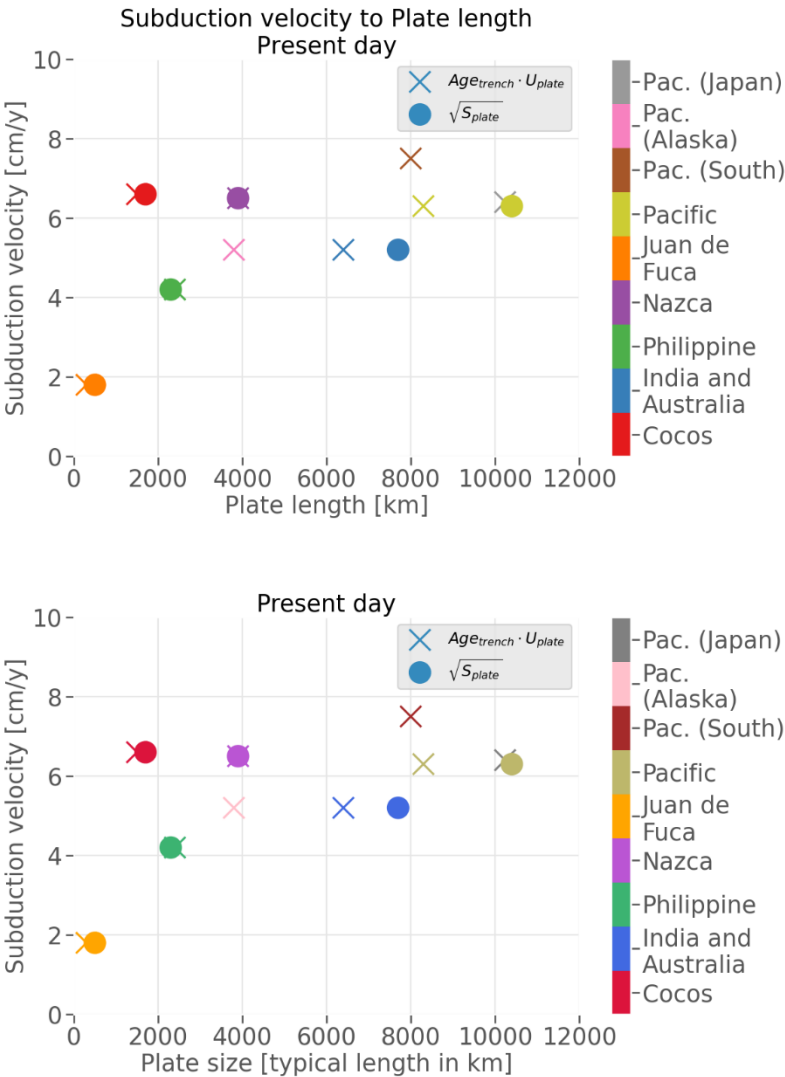
role (e.g., Becker and Faccenna, 2011; Coltice et al., 2019; Stotz et al., 2018). Nonetheless, such large-scale models cannot fully capture the regional force balance governing the dynamics of subduction at plate boundaries (i.e. the interplay between slab pull, plate bending, viscous forces between ~~the plates and~~ mantle ~~and the plates~~), in governing plate velocities and morphology. As a result, it is important to improve our understanding of the balance of forces in such a regional system to inform how these forces, or a parameterisation of them, would be best incorporated into larger-scale or global models (e.g. Conrad and Hager, 1999).

The main driving force in a regional subduction system is the pull of the sinking slab. Resistive forces include viscous drag on the slabs, frictional or viscous resistance at the contact between subducting and overriding plates, visco-plastic resistance of the subducting plates to bending into the trench and when they reach upper-lower mantle boundary (ULMB) at 660 km depth, and viscous drag on the base of the plate (e.g. Forsyth and Uyeda, 1975; Carlson et al., 1983; Conrad and Hager, 1999). For subducting plates, the latter force, basal drag, is assumed to be dominantly resistive, although we note that it can be a driving force (e.g. Becker and Faccenna, 2011; Stotz et al., 2018). A driving basal drag can occur where mantle flow, driven by the global system of sinking slabs and aided by rising plumes, provides additional forcing on a regional plate configuration (Coltice et al., 2019). We will not consider such external forces here. The regional subduction resistive forces counteract up to 90% of slab pull, with the largest contribution from viscous resistance between the subducting slabs and the surrounding mantle (e.g. Schellart, 2004; Capitanio et al., 2007). It is debated what the relative importance of the resistive forces is, and how their contributions vary between different subduction zones, and how this might contribute to the variability in subduction zone behaviour (e.g. Conrad et al., 2004; Husson et al., 2012).

It has been noted that present-day plates with large subducting slabs attached do not display a correlation between plate size and plate velocity, as might be expected if basal drag played a significant role in the subduction force balance (e.g. Forsyth and Uyeda, 1975; Conrad and Hager, 1999; Fig. 1). Conrad and Hager, (1999) suggested that high plate viscosity, which would lead to substantial loss of energy in bending of the subducting plate at the trench (i.e. high bending resistance relative to basal drag), might be responsible for this lack of correlation. Their estimate of effective plate viscosity (about two orders of magnitude higher than the asthenosphere, i.e. average effective lithospheric viscosity of about 10^{23} Pa·s for a mantle viscosity of 10^{21} Pa·s) has been confirmed by a range of subsequent studies (e.g. Zhong and Davies, 1999; Buffett and Rowley, 2006). However, dynamic subduction models with a mobile trench have shown that plates with such effective viscosities tend to adjust their dips and trench velocities to minimise energy lost in bending thus limiting the effect on plate velocities (e.g. Bellahsen et al., 2005; Capitanio et al., 2007; Ribe, 2010).

Other work, using regional dynamic subduction models, has shown that low basal drag, resulting from low asthenospheric viscosities, may be important for understanding trench motions as observed on Earth (Billen and Arredondo, 2018). Trench motions tend to be only a small fraction of plate convergence velocity (on average, throughout the Cenozoic, about 10%, Lallemand et al., 2005; Sdrolias and Müller, 2006; Goes et al., 2011). On the other hand, the type of free subduction models used to investigate the effects of plate bending can lead to trench motions that are up to 100% of convergence (Capitanio et al., 2007), although models featuring an overriding plate result in smaller relative trench velocities (Garel et al., 2014).

65 Furthermore, although most trenches retreat, 20-35% of trench segments in the past 100 Myr advanced (Goes et al., 2011; Williams et al., 2015). Small variations in the balance between the forces affecting the upper and the subducting plates have been proposed to determine the direction of trench motion (Husson et al., 2012; Capitanio, 2013; Alsaif et al., 2020) and for such a mechanism to be effective, a low asthenospheric viscosity is likely required. Billen and Arredondo, (2018) showed that a low—viscosity asthenosphere (with non-linear, strain-rate dependent rheology)—~~was important leading to~~ achieve average asthenospheric viscosities of 10^{19} - 10^{20} Pa·s and minimum viscosities as low as 10^{18} - 10^{19} Pa·s, relative to maximum lithospheric viscosities of 10^{24} Pa·s) facilitated small trench motions and periods of both trench advance and retreat.



75 **Figure 1: ~~Velocity of Present-day~~ subducting plates plate velocities, measured** at the trench in a lower mantle (plume) reference frame (O'Neill et al., 2005), as a function of plate size, in terms of a typical plate length. Plate Typical plate length is a measure of

plate size calculated as the age at the trench (Age_{trench}) multiplied by plate velocity (U_{plate}) (x markers) or as the square root of the plate surface area (S_{plate} , o markers). ~~Data~~Velocities data from ~~Conrad and Hager (1999)~~, Sdrolas and Müller (2006) and Schellart et al. (2007), and plate size data from Conrad and Hager (1999).

80 Other 2-D models of convection that approximate plate behaviour by a mechanical top boundary condition and strongly temperature-dependent rheology, albeit with an immobile trench (~~Höink and Lenardic, 2008, 2010~~), document how the ratio of lithosphere to asthenosphere viscosity governs to what extent basal drag is a resistive force. (~~Höink and Lenardic, 2008, 2010~~). In such models, a low enough ratio even leads to a driving (Poiseuille) basal drag. From these results, one would expect that if the trench was free to move, resistive basal drag would lead to trench retreat and driving basal drag would be associated with trench advance, i.e. viscosity ratio near this transition would lead to small trench motions, as found by Billen and Arredondo (2018). This indeed appears to be borne out by correlations found by Husson et al. (2012) between modelled mantle flow patterns and trench motions. Höink and Lenardic (2010) further showed that there is an influence of box size (which simulates plate size in ~~this work~~their setup) on the viscosity ratio at which the transition from resisting to driving basal drag occurs. These studies indicate that a low ratio of average ~~lithosphere to average~~ lithosphere to average ~~lithosphere~~ viscosity, (around 0.001), i.e. relatively low-magnitude basal drag, puts the system close to the transition from retreating to advancing trench motion and hence may be the most appropriate for understanding natural subduction dynamics.

On the other hand, analytical calculations and global-scale numerical models indicate that basal drag may not be such a negligible force. Basic analytical calculations (Turcotte and Schubert, 2002, section 6.3) yield estimates of basal drag that are on the order of 5-10% of slab pull. Observations of seismic anisotropy (Bokelmann and Silver, 2002) have been used to estimate that drag on the base of thick cratonic lithosphere is of a similar magnitude as ridge push, which is about 10% of slab pull and of a similar magnitude as the net slab pull (i.e. the difference between slab pull and viscous resistance to slab sinking). Several other studies have also shown that basal drag can be high in areas of thick continental roots (e.g. Conrad and Lithgow-Bertelloni, 2006; Coltice et al., 2019) and tractions from global mantle flow models yield high cumulative values of basal drag on large plates like the Pacific (Conrad and Lithgow-Bertelloni, 2006). The magnitude of basal drag by global mantle flow has been shown to be important for explaining plate motions (e.g. Becker and O'Connell, 2001; Conrad and Lithgow-Bertelloni, 2002; Becker and Faccenna, 2011; Coltice et al., 2019) and can only be effective if asthenospheric viscosities are not too low.

To better understand the role that basal drag plays in controlling subduction and trench motions, we revisit these issues here using 2D dynamic subduction models with a composite ~~rheology, incorporating several deformation mechanisms with~~ stress-dependent and ~~strongly~~ temperature-dependent ~~rheologies,~~rheology and mobile ~~trenches,~~trench and ridge. We test the effects of increased lithosphere viscosity, decreased asthenosphere viscosity, and hence variable lithospheric to asthenospheric viscosity ratio. Finally, we re-evaluate relation between subducting plate velocity and plate size on Earth, by examining both present-day plate configurations and reconstructions through the Cenozoic Era.

110 **2 Model set up**

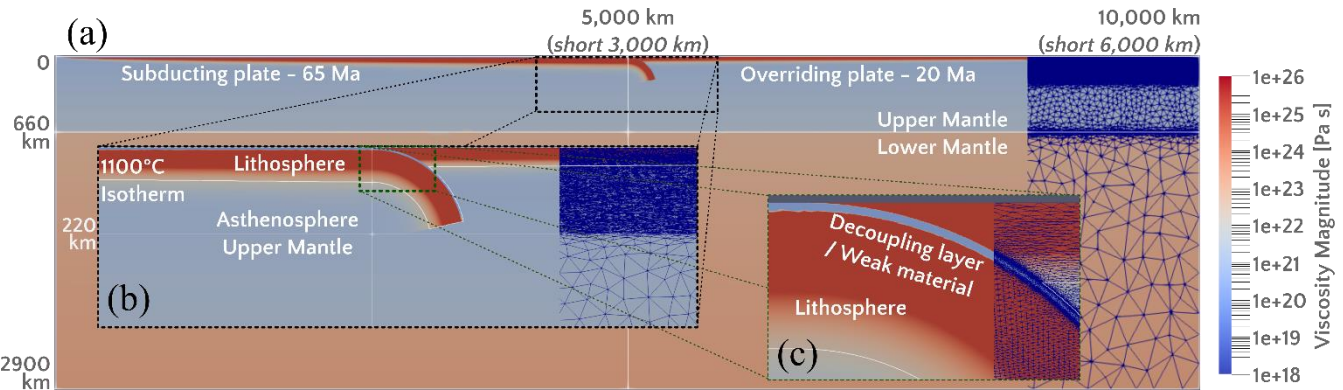
We use a thermo-mechanical model of a single subduction system comprising a subducting and overriding plate in a 2D rectangular box (Fig. 2). The finite-element, control-volume code Fluidity (Davies et al., 2011; Kramer et al., 2012; Garel et al., 2014; Le Voci et al., 2014) is used to solve the mass, momentum and energy conservation equations for Stokes flow under the Boussinesq approximation of incompressibility, for a viscous rheology. An irregular triangular adaptive mesh, with element sizes ranging from 0.4-200 km, yields high resolution in areas of dynamic significance (i.e. in areas of strong curvatures/gradients of velocity, temperature, viscosity and material volume fraction) and lower resolution elsewhere (Fig. 2). Our models utilise the same numerical methodologies and physical properties as those of Garel et al. (2014). -A summary of the model set up is given below, and further details, including all model parameters, are provided in Supplementary-Table A4S1-1.

120 The initial temperature field includes a cold lithosphere, with temperatures calculated using half-space cooling (Turcotte and Schubert, 2002) with a linear age gradient from ridge to trench on both the overriding and subducting plate sides, and a prescribed bent slab down to 220 km depth. We examined both this set up with a prescribed initial slab in the upper 220 km of the box with no initial strain, as well as a set up where we kinematically drive the slab to a comparable depth before continuing the calculations without kinematic constraints. No significant differences in the evolution with the two initial

125 conditions were observed and, accordingly, we present only the results from the former approach.

We use a subducting plate with initial age of 65 Myr and overriding plate with initial age of 20 Myr, both with the same initial length (Fig. 2a). The young overriding plate exerts relatively low resistance to trench motion (Garel et al., 2014). In this study we do not vary initial subducting- and upper-plate ages to focus on varying lithospheric and asthenospheric strengths. The top surface is a free surface, which leads to a natural ridge push, and all other sides are free slip. Thermal

130 boundary conditions are insulating on the left, a constant temperature at the top and bottom, and we apply mantle temperature to the right-hand side boundary to force a ridge at the edge of the overriding plate. The trench and the ridge on the subducting side are mobile.



135 **Figure 2: Model set up illustrated with the initial viscosity field of the reference long-plate model, with text indicating parameters for the reference short-plate model. Initial trench ages are indicated for the overriding and subducting plates, which have linear age variations between the ridges and the trench. Initial plate temperature is set according to half space cooling (Turcotte and**

Schubert, 2002). See text for boundary conditions and further information. (a) Full model view, (b) Zoom of initial slab, (c) Zoom of trench and decoupling layer. The irregular adaptive mesh is presented on the right side of each panel. White lines mark the initial location of the trench (vertical line), the ULMB at 660 km, the bottom of the asthenosphere (chosen at 220 km) and the bottom of the lithosphere (at the 1100 °C isotherm).

We use a temperature, pressure and strain-rate dependent composite rheology. ~~Diffusion, which naturally results in a strong lithosphere and weaker asthenosphere. Other factors may contribute to the contrast between lithosphere and asthenosphere viscosity, e.g. hydration, partial melt and anisotropy (e.g., Hirth and Kohlstedt, 1996; Korenaga and Karato, 2008; Becker and Kawakatsu, 2011). Here, we consider diffusion~~ and dislocation creep mechanisms ~~are~~, combined with a low-pressure yield-stress mechanism to approximate brittle failure and an approximation of Peierls low-temperature plasticity at high pressure (e.g. Čížková et al., 2002; Garel et al., 2014; ~~equations~~). Equations and parameters for the reference cases are as in Garel et al. 2014 and are given in ~~Appendix A~~. Supplementary Section S1. We vary parameters, as discussed below, to evaluate different relative lithosphere and asthenosphere viscosities. A 5-km thick weak, or decoupling, layer is included on top of the subducting plate and slab (Fig. 2c). The decoupling layer has a relatively low viscosity, which arises from modified rheological parameters (see ~~Appendix A~~ Supplementary Section S1 and Table ~~A+S1.1~~ for further details) effective only at depths shallower than 200 km.

We examine the effect of basal drag by comparing long and short plates with initial ~~length~~ lengths of 5000 and 3000 km from ridge to trench, respectively, adapting both plate size, through the initial thermal field, and box size. We examine the role of asthenospheric and lithospheric strength by adapting their rheology independently from the background rheology using a simple scaling factor. This method allows us to isolate the influence of changing lithosphere or asthenosphere strength without some of the additional feedbacks that arise in a fully dynamically controlled rheology. To do this, we use the 1100°C isotherm to delineate the lithosphere-asthenosphere boundary (LAB) and use passive markers to track the outlines of the subducting lithosphere and differentiate it from the overriding plate. We set the base of the asthenosphere at 220-km depth, ~~following which is below~~ the ~~commonly~~ bulk of the modelled minimum in viscosity, and consistent with the seismically imaged depth of the base of the asthenospheric low ~~velocity~~ wave-speed zone (e.g. Dziewonski and Anderson, 1981; French et al., 2013). A 10-km linear transition is set across the boundaries of the lithosphere and the asthenosphere to prevent introducing sharp discontinuities in viscosity. Finally, we test the insights from these systematic models against a model where the relative lithosphere/asthenosphere viscosity contrast is modified self-consistently by changing the rheological parameters.

To model a system with weak asthenosphere we multiply its viscosity by 0.5, so that, with strain-rate feedbacks, it reaches minimum values of 10^{18} - 10^{19} Pa·s. These values are consistent with current estimates of minimum asthenospheric viscosities based on postglacial rebound and laboratory experiments (e.g. Korenaga and Karato, 2008; Paulson and Richards, 2009; Billen and Arredondo, 2018). To simulate a strong lithosphere, we multiply its viscosity by factors of 2.0 or 10.0, limiting the strongest lithosphere to 10^{25} Pa·s (reference and most other cases) and 10^{26} Pa·s (strong lithosphere cases), which results in average lithospheric viscosity of 10^{24} - 10^{25} Pa·s. These values are consistent with the highest estimates of effective lithospheric strength (Conrad and Hager, 1999; Billen and Hirth, 2007; Burov, 2011) where a maximum 10^{26} Pa·s is an

upper bound ~~in terms of~~ viscosities for subductable plates. With this range of lithospheric and asthenospheric viscosities, we can generate continuous Earth-like oceanic style subduction while avoiding immediate slab detachments which result from to lithospheric weakening due to ~~weak lithosphere resulting from~~ high strain rates, or the stalling of subduction due to unattainable forces required for the bending of very strong lithosphere.

3 Results

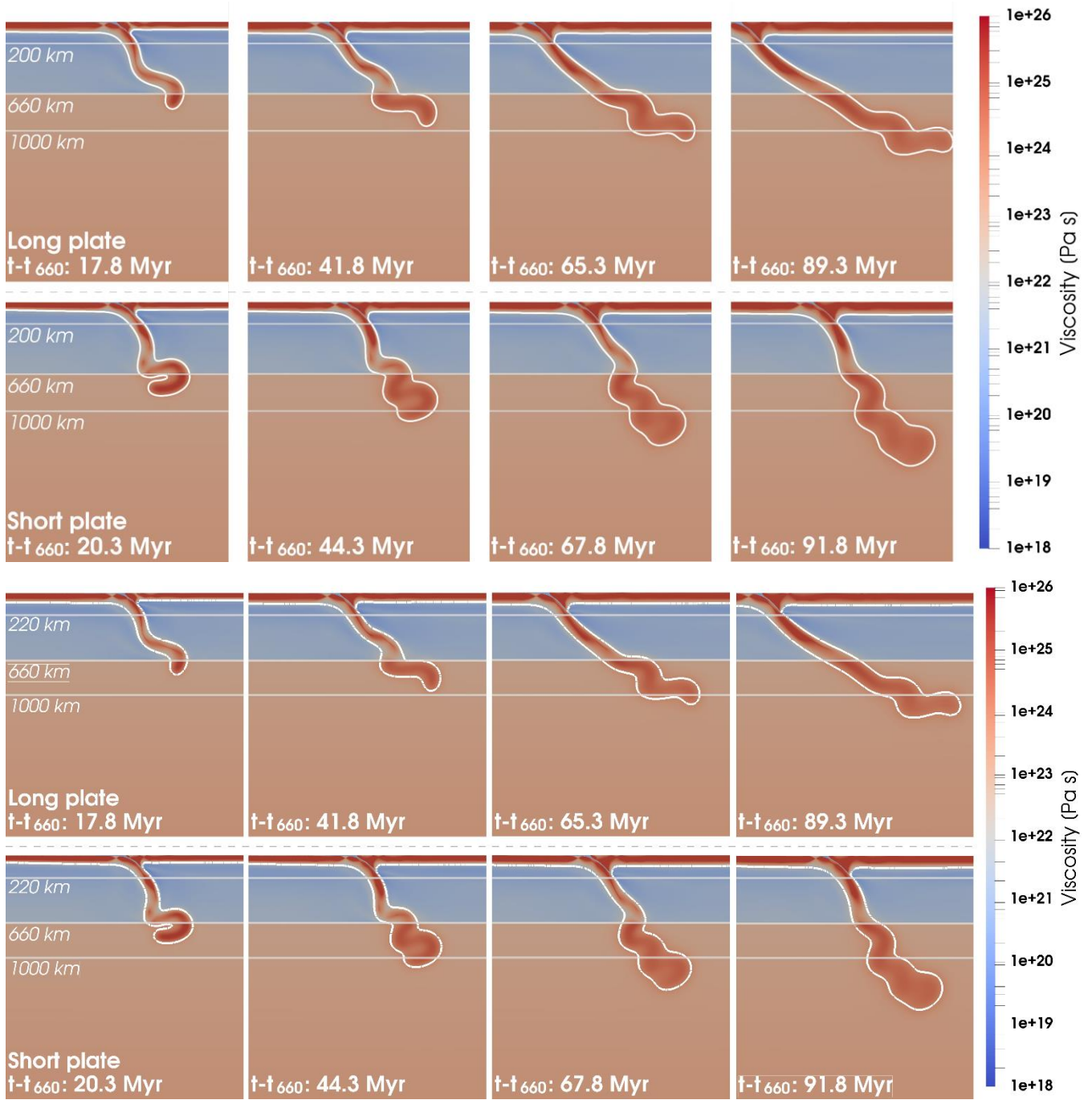
3.1 Reference model

The long- and short-plate reference models progress in stages, with their temporal evolution shown in Fig. 3. The initial stage is characterised by ~~a strong~~ slab sinking through the upper mantle at relatively high subduction velocities. Asthenospheric viscosity and mantle viscosities around the slab are lowered due to high strain rates. This stage ends when the slab reaches the ULMB at 660 km depth. At this point, velocities and strain rates drop and viscosities rise.

The second stage exhibits periodic oscillations in velocity between intermediate and low values (Fig. 4a). The oscillations are caused by episodes of flattening and steepening of the slab on the ULMB and may have a surface expression of oscillating trench motion (e.g. Clark et al., 2008; Lee and King, 2011). During this stage, the slab buckles, and the resulting folds are preserved during the descent of the slab into the lower mantle. The amplitude of the buckling decreases with time, such that if the models are run long enough (time is dependent on rheology), the subducting plates evolve to a final stage of more or less steady subduction. This is achieved in the long-plate reference model.

The shorter plate has higher subduction velocities than the long plate (Fig. 4a), whilst the longer plate exhibits enhanced trench retreat compared to the short-plate case (Fig. 4b). These results indicate a significant influence of basal drag. Higher basal drag resistance leads to the slower subduction velocity of the long plate. In an additional feedback, less strain-rate weakening occurs in the asthenosphere under the long plate, as the asthenosphere moves with a similar velocity to the overlaying lithosphere in each model. This ~~enhanced results in higher~~ asthenospheric viscosity and resistance and makes subduction by trench retreat energetically preferable over subduction by plate advance over the asthenosphere. Trench advance does not occur at any stage in our reference models.

195



200

Figure 3: Viscosity field evolution at various times for the reference long-plate model (top row) and reference short-plate model (bottom row). White contour marks the 1100 °C isotherm as the outline of the lithosphere. The vertical and horizontal spatial scales are identical and only part of the full model domain is shown. Note each model presents a distinct evolution of the slab and trench, which is the result of a difference in basal drag.

We estimate basal drag below the subducting plate ~~and slab pull~~ for each time step in the models, ~~and compare it to the main driving force, slab pull. We do this~~ using the following ~~approximate~~ equations from Turcotte and Schubert (2002) ~~(section 6.3), yielding forces~~ per unit length out of the model plane:

$$F_{BD} = \frac{2\eta_{Ast}\Delta U}{h_{Ast}} \cdot \left(2 + 3 \cdot \frac{h_{Lit}}{h_{Ast}}\right) \cdot L_{plate} \quad (1)$$

$$F_{SP} = \Delta\rho \cdot g \cdot S_{slab} \quad (2)$$

where F_{BD} and F_{SP} are the basal drag and slab pull forces respectively, η_{Ast} is the viscosity of the asthenosphere, ΔU velocity difference between the lithosphere and the asthenosphere, h_{Ast} and h_{Lit} the thickness of the asthenosphere and the lithosphere, respectively, L_{plate} is the length of the unsubducted part of the plate, ~~$\Delta\rho$~~ is the density difference between the slab and mantle, with a typical value of 40-50 kg/m³, g is the gravitational constant and S_{slab} is the cross-sectional area of the slab. The parameters for basal drag, η_{Ast} , ΔU , h_{Ast} and h_{Lit} , are measured at a representative vertical profile through the subducting plate ~~(Figure S2-3):~~ provided that the profile is taken away from the trench and ridge, there is negligible sensitivity to the profile location. ~~For ΔU , plate~~ The 1100°C isotherm is used as the LAB in determining h_{Ast} and h_{Lit} and to ~~outline the edge of the slab, for S_{slab} , (see Fig. 2). Plate~~ velocity is measured at 20 km and asthenosphere velocity ~~and~~
 viscosity at 160 km depth. ~~The~~ For the calculation of S_{slab} , the length of the slab is measured as the length of a straight line connecting the trench and the deepest point of the slab, or the coldest point of the slab at the ULMB, ~~and the width of the slab is measured along a horizontal cross section at 220 km depth. These approximate expressions for F_{BD} and F_{SP} are sufficient to understand variations in subduction behaviour between models and through time. Note that the expression for F_{SP} assumes stresses are effectively transmitted from the slab to the plate, which is appropriate because the adaptive grids of~~
 our models ensure we always resolve the strong slab core, even when it is quite thin (Garel et al., 2014). Both slab pull and basal drag evolve in our dynamic models (Fig. 4d and 4e). The cyclical nature of the buckling phases is associated with the evolution of the slab pull and basal drag forces. As the slab slows and flattens on top of the ULMB as a result of the increased resistance to sinking at this depth, its dip decreases, and slab pull increases. The higher pull increases the velocity and consequently the basal drag. The increased drag subsequently contributes to the slowing down the plate leading to steepening of the slab, and a reduction of slab pull. The following decrease in subduction velocity leads to lowering of drag. This reduction then allows for increase in slab pull and a new flattening episode.

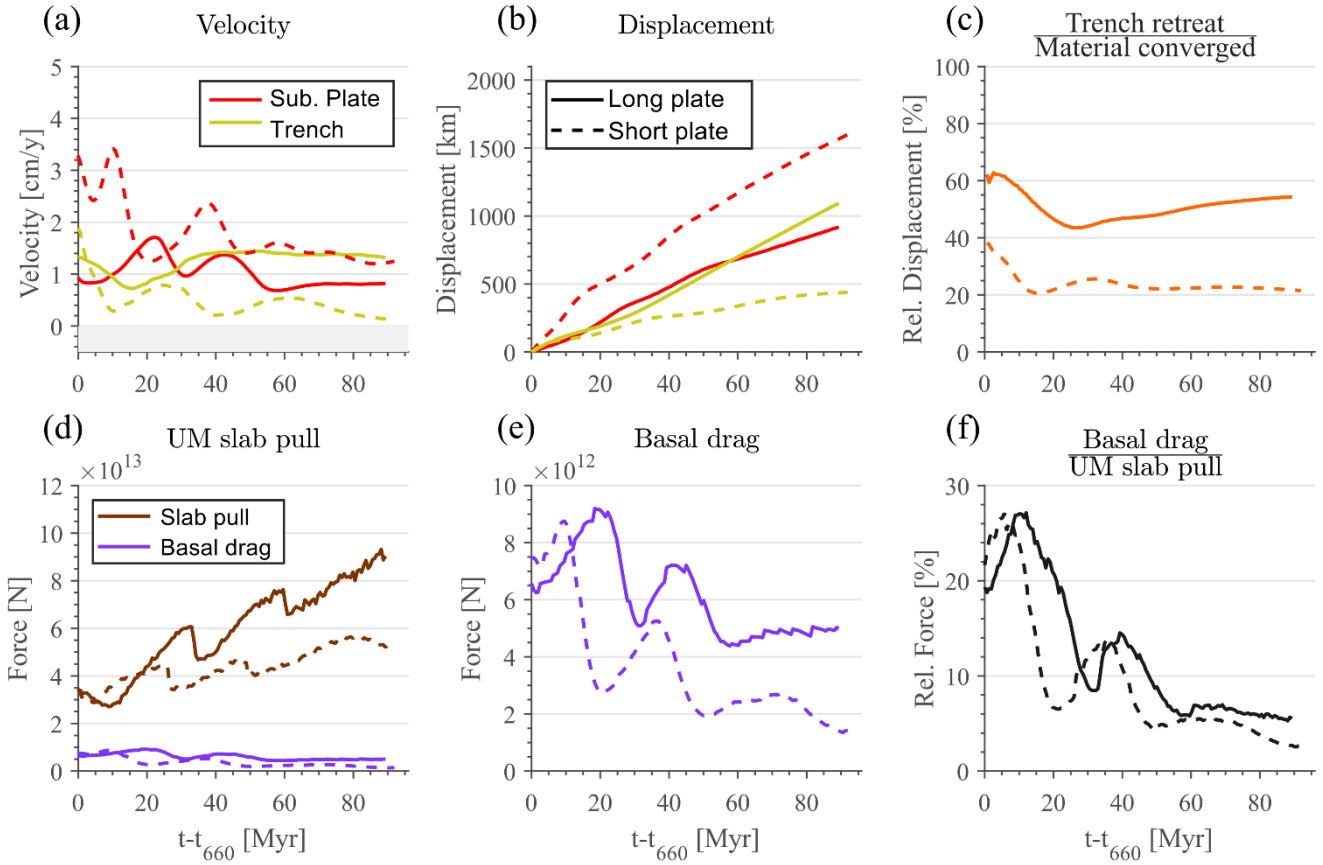


Figure 4: Temporal evolution of the long-plate reference model (full lines) and the short-plate reference model (dashed lines). $t-t_{660}$ indicates the time since the initial interaction of the slab with the ULMB. (a) Velocity of the subducting plate (positive towards the upper plate, red) and the trench (positive away from the upper plate, yellow), measured at 25002000 km distance from the initial subducting plate ridge. (b) Displacement of the subducting plate (red) and the trench (yellow) relative to the initial condition. (c) Percent of plate convergence (calculated as the sum of trench retreat and plate displacement) achieved by trench retreat. (d) Upper mantle slab pull and basal drag below the subducting plate, calculated as described in the main text. (e) Basal drag force from (d). (f) Ratio of basal drag to upper mantle slab pull force. This shows that basal drag is of a similar magnitude as effective slab pull (i.e. the difference between gravitational pull and the viscous mantle resistance on the slab sides) which is ~10% of the upper-mantle slab pull force.

For the reference models, we find that basal drag averages around 10% of slab pull, ranging from just below 30% in the fast, early stage of subduction to 3-5% in the final stage (Fig. 4f). This is similar to the estimated magnitude of ridge push relative to slab pull (e.g. Turcotte and Schubert, 2002). Furthermore, the basal drag ratio (of slab pull) for the short plate is systematically several % lower than the basal drag ratio for the long plate (Fig. 4e and 4f). ThisNote that due to the nonlinear feedbacks in the models, there are about 10 Myr right after the plates reach the ULMB (time t_{660}) where the short plate experiences a higher drag than the long plate (Fig. 4). These relatively high drag values for the short plate are a consequence of the high velocities that the short plate attains in response to the initially significantly lower drag (Fig. S2-3). The difference in basal drag ratio between the long- and short-plate models is apparently sufficient to change subduction velocity and influence the overall evolution of the slab's morphology- of the slab.

3.2 Weak asthenosphere

The most direct mechanism to reduce basal drag is to lower the asthenosphere viscosity. A lower basal drag allows for higher subduction velocity to develop, which in turn decreases the asthenospheric viscosity through the feedback effect of increased strain rate. The compound effect of applying the 0.5 reduction factor and consequent strain-rate weakening is an order of magnitude decrease in asthenospheric viscosity compared to the reference models.

250

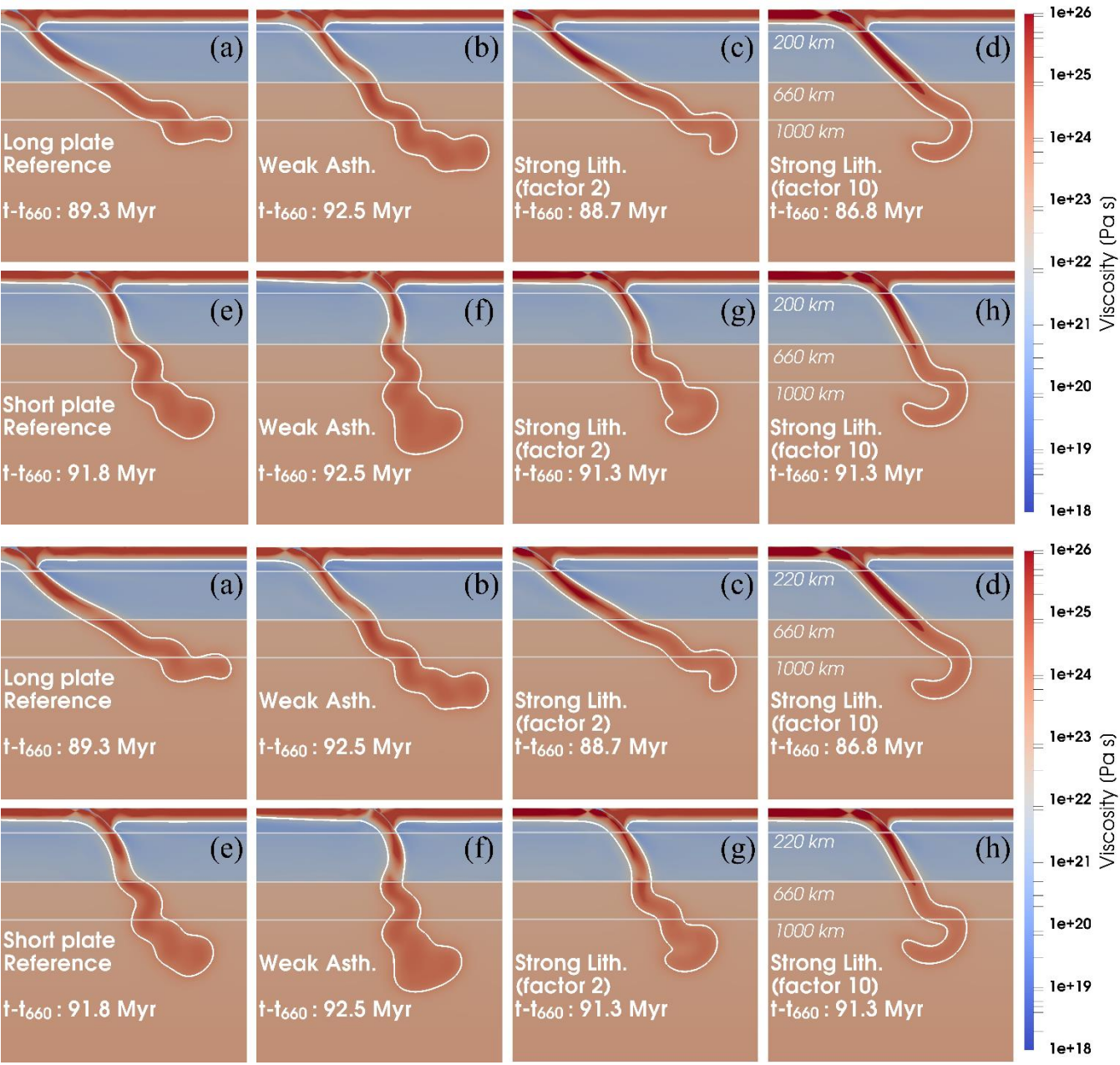


Figure 5: Comparison of final slab shapes for different models shown as a snapshot of the viscosity field. Long-plate (top row, (a)–(d)) and short-plate (bottom row, (e)–(h)) cases of Reference models ((a) and (e)), Weak Asthenosphere models ((b) and (f)), and Strong Lithosphere models with strength scaling factors of 2 ((c) and (g)) and 10 ((d) and (h)). White contour marks the 1100 °C isotherm as the outline of the lithosphere. The vertical and horizontal spatial scales are identical, with grey lines to mark depths of 200 km, 660 km and 1000 km. For every type of model, the subducting slab in the short-plate model has more buckles and has undergone less trench retreat than in the long-plate model.

Assigning a weak asthenosphere results in an increase in subduction velocity and a reduction in trench retreat, as shown in Fig. 5 and Fig. 6. However, the reduced basal drag does not remove the plate-length dependence of the subduction evolution; the difference between the displacement of the subducting plate for the long and short plates remains similar even if the total displacement has slightly increased due to the higher subduction velocities (Fig. 6a). The basal-drag ratios are lower than in the reference models and the difference between the long and short plates has increased, with the basal drag ratio for the short plate ranging from about 20% to less than 1% over the evolution of the models (Fig. 6d). Although overall ratios of basal drag to slab pull are lower than in the reference model, basal drag still plays significant role in these low-viscosity asthenosphere cases, as is clear from the difference in the final shapes of the long- and short-plate slabs (Fig. 5b and 5f). The overall contribution of trench retreat to plate convergence is reduced for both the long- and the short-plate models compared with the reference models (Fig. 6c).

3.3 Strong lithosphere effect (factor 2 and 10)

A second mechanism to reduce the significance of basal drag as resistive force is to increase the energy cost of bending through increased lithospheric viscosity (Conrad and Hager, 1999). This was implemented by applying the strengthening factor only in the subducting lithosphere and the slab. This process, unlike the reduction in asthenosphere viscosity, does not trigger any strong feedbacks between strain rate and effective viscosity. We therefore tested both factor 2 and factor 10 to compare the strengthening mechanism with the prescribed and the effective asthenosphere weakening. The resulting plate strength of the factor 10 experiments was at the upper bound of suggested realistic plate viscosity and at the upper bound of what is subductable in our models.

Increasing the strength of the lithosphere by a factor 2 reduces the amount of material subducted for the short-plate model, relative to the short-plate reference model, much more than it reduces the amount subducted for the long plate compared to the long-plate reference case (i.e. the behaviour of the long and the short plates becomes more similar). Trench retreat for both plates is similar to the reference models. The resulting basal drag ratio is slightly reduced relative to the reference models (by 1-2%), as shown in Fig. 6e-6h. Slab shapes at the end of the simulation are similar to the reference models with somewhat less slab deformation and buckling at the ULMB interface because less material has subducted (Fig. 5c).

For the factor 10 increase of subducting-lithosphere viscosity, the long- and short-plate models achieve similar amounts of subducted material. The amount of material subducted by the long plate deviates substantially less from the reference than the short plate, while trench retreat is reduced more in the long- than the short-plate model (Fig. 6i and 6j). This is as expected following the work of Conrad and Hager (1999); the resistance to plate bending becomes a more important control on subduction velocity than basal drag if the plate is sufficiently strong. However, we consider this model as an end-

~~member~~endmember of plate strength, as it is close to what, in our models, is the limit of subductable plates. The basal drag ratio for these strong-plate models is substantially lower than the reference models, with average values of around 5% only, and with a small systematic difference remaining between the long- and short-plate models (Fig. 6l). This amount of reduction in basal drag ratio by about 3-5% is sufficient to influence subduction dynamics, as can be observed at the final stages of the models (Fig. 5d) where the long- and short-plate models achieve different trench locations and slab shapes than the reference models.

In models where we combined a weaker asthenosphere with a stronger lithosphere (factor 2 and factor 10), the result was a joint effect of what we observed when we changed asthenosphere and lithospheric viscosity individually. The combined models subduct an increased amount of plate but there was less difference between the long- and short-plate models, and trench retreat was reduced. Thus, the models with strong lithosphere and weak asthenosphere exhibit the most Earth-like behaviour in terms of a low contribution of trench motion to convergence and limited sensitivity to plate length. However, this behaviour only appears for the upper bound of plate strength.

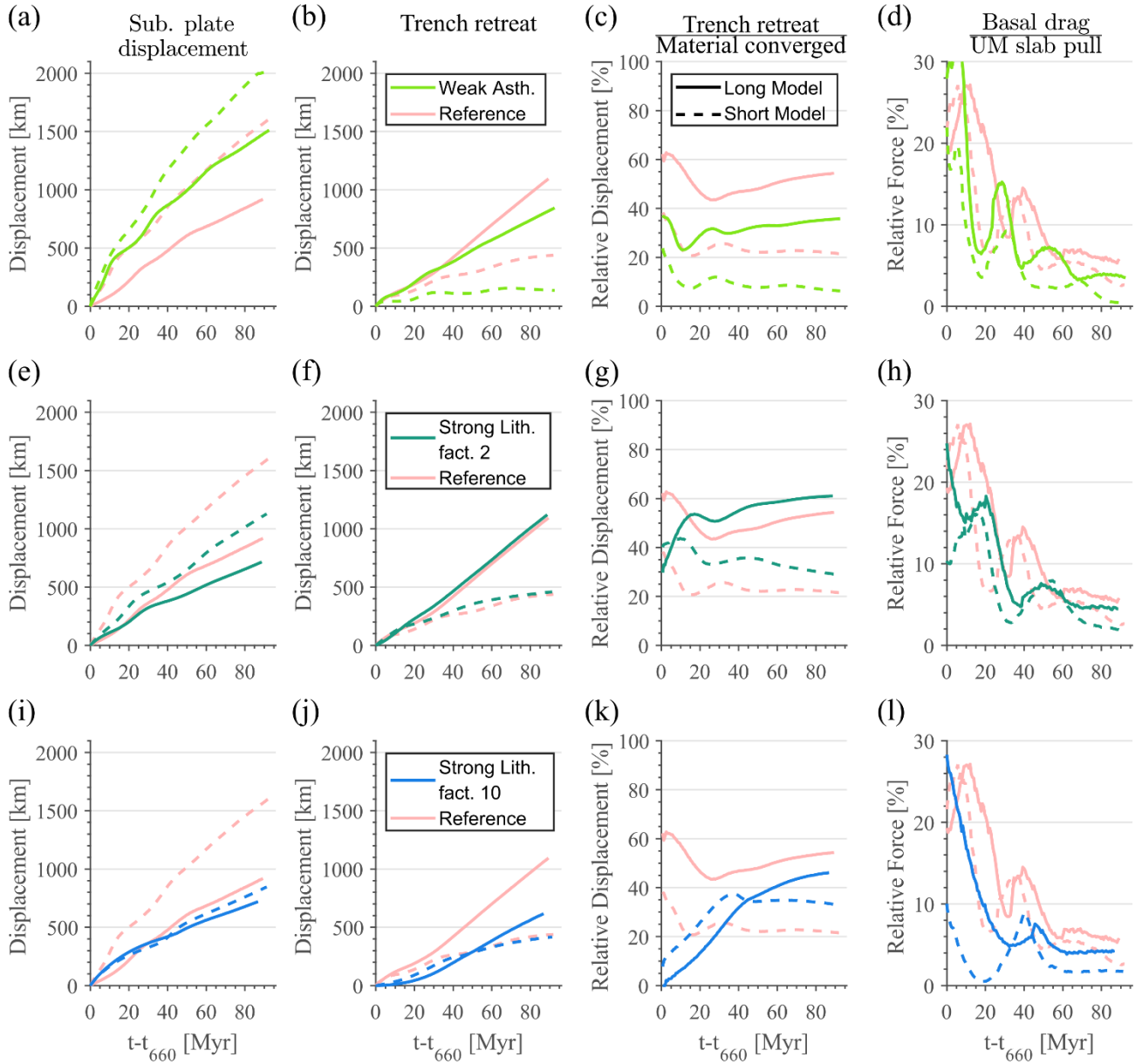


Figure 6: Temporal evolution of the long-plate (full lines) and short-plate (dashed lines) models. Rows of graphs are for different types of models, where (a)–(d) are Weak Asthenosphere models, (e)–(h) are Strong Lithosphere (factor 2) models and (i)–(l) are Strong Lithosphere (factor 10) models. The first column, (a), (e) and (i), shows the displacement of the subducting plate from the initial state, the second column, (b), (f), and (j), the amount of trench retreat, the third column, (c), (g) and (k), shows trench retreat significance as percentage of the total material converged, the fourth column, (d), (h) and (l), shows the ratio of basal drag to upper mantle slab pull force. All models are compared with the reference models, shown in light red.

3.4 Self-consistent rheology

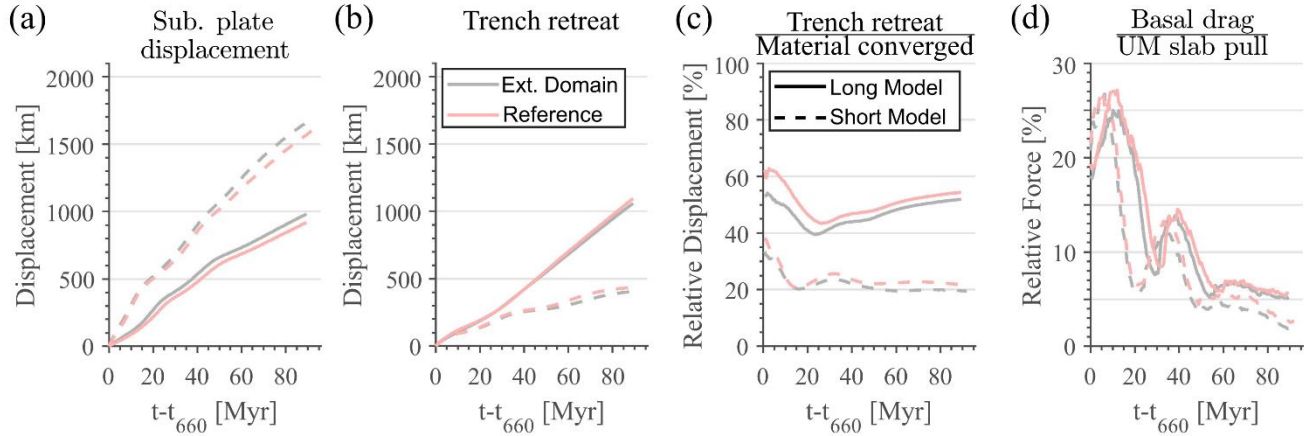
We also tested whether a self-consistent rheology that yields a stronger lithosphere and weaker asthenosphere than the reference models behaves similarly as the models where we artificially prescribed regions of modified viscosity. To do this, we used a simple optimisation algorithm to find a combination of flow law parameters that yielded an increase/reduction in viscosity in the lithosphere/asthenosphere (further detail in Maunder et al., 2016). We required that the modified composite rheology still satisfied the set of Earth-like conditions that Garel et al. (2014) imposed. These conditions include: (i) that viscosities of the upper mantle and lower mantle will be in a range reasonable for postglacial rebound (Paulson and Richards, 2009), (ii) Peierls low temperature plasticity is required to control deformation in the lower lithosphere and in the slab once subducted, to account for deep slab weakening, (iii) the transition from dislocation to diffusion creep as the dominant deformation mechanism is required to comply with the depth range inferred from seismic anisotropy (i.e. around 250 km depth in background mantle (Ranalli, 1995)). We optimised the values of the activation energy and volume, the pre-factor and the stress exponent values of diffusion, dislocation and Peierls creep to achieve a lower asthenospheric and higher lithospheric viscosity without significantly modifying the lithospheric thickness of the reference models. [Supplementary Table A+S1-1](#) lists the set of modified parameters that satisfies all constraints. We then tested that under the new rheology, subduction remained viable. We found that, in addition to adjusting the overall rheological parameters, we needed to increase the strength of the weak layer to limit subduction velocities (and avoid slab detachment) early in the evolution of the model.

All these conditions together strongly narrow the set of possible rheological parameters that allow strengthening of the lithosphere while weakening the asthenosphere, and we were not able to strengthen the lithosphere as much as in the scaled rheology models without stalling subduction. This is due to the nature of self-consistent rheology, which couples the strength of the plate and its thickness. Any plates with 10 times higher strength were also thicker thus additionally increasing bending resistance and impeding subduction. [Supplementary-Fig. B2S2-2](#) shows how the evolution of subducting plate morphology and trench retreat are similar to our models where we artificially lower the viscosity of the asthenosphere and increased the viscosity of the lithosphere.

3.5 Models with extended domain

In the models discussed above, we changed the size of the model domain together with plate size, so that the models always contained the only two plates with their bounding spreading ridges at the box edge. To test whether box size affects the results, we also ran a set of models where we use an extended and fixed box size but vary the plate size inside the box. We tested both the long- and the short-plate reference cases in a box of 15,000 km length. Compared to the reference models, the box was extended by an additional 5000/9000 km, for the long- and short-plate models respectively, to the left (trailing end) of the subducting plate. The initial condition in the extended section was set to mantle temperature throughout, i.e. the extended section contained no initial lithosphere. The upper plate was set to be the same length as the reference models (i.e.

5000 km and 3000 km for the long plate and short plate models respectively). The top thermal boundary condition allowed
 340 for lithosphere to develop in the extended section with time. Comparing with the reference models, these cases display the
 same trends of plate advance and trench motion, with differences in diagnostic parameters of less than 5% (Fig. 7). These
 differences are minor and indicate that box size does not bias the results.



345 **Figure 7: Temporal evolution of the long-plate (full lines) and short-plate (dashed lines) extended domain (grey) and reference (light red) models. (a) displacement of the subducting plate from the initial state. (b) amount of trench retreat. (c) trench retreat significance as percentage of the total material converged, (d) ratio of basal drag to upper mantle slab pull force.**

4 Discussion

4.1 Trench motion

The trench always retreats in both the long- and short-plate reference models. Although strengthening the lithosphere and
 350 weakening the asthenosphere affect trench behaviour, only the short-plate model with the weak asthenosphere displays
 periods of trench advance. In this model, due to the lowered basal drag, subduction is able to occur through more plate
 advance, whilst limited periods of trench advance occur during the buckling interaction between the strong slab and lower
 mantle. These periods occur when increased subduction velocity brings colder and stronger slab to interact with the ULMB.
 The interaction between the steep strong slab and the upper mantle, which has lowered viscosity due to strain-rate
 355 weakening, does not allow the slab to unbend. Instead, the cold slab attains a rolled-over shape that upon interaction with the
 higher viscosity lower mantle pushes the plate forward. These episodes end once subduction velocity reduces, as this gives
 the slab time to heat and weaken, and to regain the ability to unbend. This type of trench advance mechanism can be
 observed in other models (Bellahsen et al., 2005; Di Giuseppe et al., 2009; Ribe, 2010; Billen and Arredondo, 2018), in
 particular models where slab strength does not decrease with increasing temperature (i.e. models without a Peierls type
 360 plasticity). ~~In nature, This type of rolled-over slab is rare on Earth, and has been imaged~~ only below part of the Indian
 collision front ~~has a slab with such a rolled-over shape been imaged~~ (e.g. review by Goes et al., 2017); below other
 advancing trenches, slabs are steep but do not have the shape expected for trench advance resulting from the push of a strong

slab at the ULMB. So, although the modelled trench advance episodes have magnitudes and rates in the range of observations, other mechanisms for trench advance, such as external forcing by background mantle flow and mantle plumes (as happens in the models from Höink and Lenardic, 2008) or an imbalance between ridge push and slab pull (e.g. Capitanio et al., 2009) may be more likely drivers of trench advance on Earth.

4.2 Model limitations

~~Other approximations made in the~~The models ~~are that~~approximate subduction in a number of ways: we study only a single initial age for subducting and overriding plates and neglect the effect of upper mantle phase transitions. Phase transitions exert a second-order effect on the difference between short- and long-plates, that would mainly enhance the slab buckling and flattening that happens in the models (see e.g. Goes et al., 2017 for a review). The effect of plate age was studied by Garel et al. (2014) and Agrusta et al. (2017), who used a similar model set up as we use here but varied the age of subducting and upper plates without varying plate size. These models show that the initial ages of subducting and overriding plates affect the partitioning of plate convergence between trench retreat and subducting plate advance, with a lower contribution of trench retreat for initially younger subducting plates and initially older overriding plates, resulting in a steeper more buckled slab. The difference in motion partitioning and resulting slab morphology between our short- and long-plate reference models is similar to the difference between subduction of an initially 100 Myr old and an initially 30-50 Myr old plate (Garel et al., 2014). This further emphasises the importance of drag below the plate in the total force balance of our models.

However, one should also bear in mind the limitations of the 2D setup of the models. For 3D plates, there may be more convergent boundary length (and hence slab pull) relative to plate surface area than in the 2D cases. This influences the ratio of slab pull to basal drag, which we ~~will~~investigate with some basic analytical calculations for ~~the main end-member~~ natural subduction systems in the following section. Furthermore, in a 3D system mantle flow may be ~~in~~at an angle to the plate advance direction, which will affect the component of velocity used to calculate the drag. A more Earth-like 3D system will also include mantle upwelling as well as downwelling flows. Upwelling flow, together with the global system of subduction-driven flow can result in driving drag below some plates (e.g. Colli et al., 2014; Stotz et al., 2018; Coltice et al., 2019), and cannot occur in our model setup. These complications, as well as local phenomena (e.g. the presence of mantle plumes, lateral variations in slab properties, an imbalance between ridge push and slab pull (Capitanio et al., 2009; Capitanio, 2013)) may result in more complex behaviour than presented in our models.

4.3 The role of basal drag on Earth

Our set of models clearly shows that basal drag is an important component of the force balance governing subduction dynamics, across the parameter space investigated. This is consistent with simple first-order analytical calculations of basal drag, ~~as we next~~. We demonstrate this, by calculating basal drag and slab pull for the Pacific and Cocos plate as large and small plate end members. We use Eq. (1) and (2) but for plate area S_{plate} rather than length L_{plate} and slab volume $V_{slab} = S_{slab} \times L_{trench}$ rather than slab area $S_{slab} = L_{slab} \times W_{slab}$. We ~~assume~~consider only pull from the upper mantle

part of the ~~slabs pulls and slabs extend~~slab. L_{slab} is the length of a slab extending through the whole upper mantle under an average dip of 80° – 70° (representative dip from the global compilation of Lallemand et al., 2005). We also assume the observed plate velocity U is a reasonable estimate of to the difference in velocity between lithosphere and asthenosphere, ΔU . The properties used for the calculation and the forces calculated are summarised in Table 1. The relative basal drag, measured as the ratio of basal drag to slab pull, is around ~~+630%~~ for the Pacific plate, but only ~~5~~around 10% for the Cocos Plate. The analytical values of basal drag are somewhat larger than the values in the second stage of our models because the Pacific plate is about a factor of two larger than our subducting plate in the long-plate model, and our model velocities are on the low side compared to those observed around the Pacific. So, all evidence points to a role of basal drag that is significant, and the models would predict that unless other factors mask this trend, subduction velocities should vary with plate size.

	U [$\frac{cm}{year}$]	S [km^2] S_{plate} [$\cdot 10^6 km^2$]	V_{slab} L_{trench} [km]			η_{Ast} [$Pa \cdot s$]	$\Delta\rho$ [$\frac{kg}{m^3}$]	$h_{Lit},$ h_{Ast} [km]	F_{SP} [N][$\cdot 10^{19} N$]	F_{BD} [N][$\cdot 10^{19} N$]
			L_{slab} [km]	W_{slab} [km]	L_{trench} [$\cdot 10^3 km$]					
Pacific	6.3 6.36.3	108 10 ⁶ 108	12 10 ³ 70	10^{±9}8 0	50 12	100,150 10	805	3.5 10 ^{±9} 10 0, 150	0.16 10 ^{±9} 33.6	11.1
Cocos	6.6 6.6	3 10 ⁶ 3	0	40	2.5	19	0	33.6 10 ^{±9} 10 0, 150	5.52 10 ^{±9} 3.5	0.3

Table 1: Slab pull and basal drag force calculations, with associated parameters, for the Pacific and Cocos plates. U is plate subduction velocity, S_{plate} is subducting plate surface area, V_{slab} is the slab volume, L_{slab} is the length of the slab in the upper mantle, W_{slab} is the thickness of the slab, contributing to the difference in buoyancy due to slab age, L_{trench} is the length of subduction trench, η_{Ast} is the viscosity of the asthenosphere, $\Delta\rho$ is the density difference between the slab and surrounding mantle and h_{Lit} and h_{Ast} are the thickness of the lithosphere and asthenosphere. ~~W_{slab} is the thickness of the slab, contributing to the difference in buoyancy due to slab age.~~ F_{SP} and F_{BD} are the slab pull and basal drag forces, calculated using Eq. (1) and (2).

We re-examine the observations of velocity and plate size throughout the Cenozoic Era, using GPlates (Müller et al., 2018) and the ~~new~~-reconstruction of Müller et al. (2016). We include only plates mainly driven by their attached subducting slabs, consistent with Conrad and Hager (1999). The trenches considered are those where subduction occurs below North, Central and South America, Alaska-Aleutians, Kuriles-Japan, Izu-Bonin-Marianas, Ryukyu-Philippines, Tonga-Kermadec and Sumatra-Java, with the Pacific, Philippine, Cocos, Nazca, Juan de Fuca, Farallon, Indo-Australia, Izanagi, and Kula plates as subducting plates. At 10 Myr intervals between 0 and 60 Myr ago, we evaluate which of these subduction systems are active. Maps of the trenches considered at each time are included in Fig. ~~B4~~S3-1. In our velocity and age estimates, we remove points at the trench ends to avoid biases by edge effects (e.g. highly oblique motions – see details in ~~Appendix C~~Supplementary Section S3). We average age and velocity of the active subduction systems along each trench at each time

step and calculate plate area for the plate polygons that make up the subducting plate at the corresponding time. Resulting trends are similar for the full velocity of the subducting plate and the trench-normal component of it.

The resulting size-velocity trend is shown in Figure 8A.8a. The ~~newer~~recent reconstruction shows a similar present-day trend (bold symbols) as the older reconstructions (Fig. 1 and Fig. C2S3-2), with a ~~possible~~hint of a trend of increasing subduction velocity with increasing plate size for small plates, but a flat trend for plates with a larger than 3000² km². When all subducting plates through the Cenozoic are considered, no significant trend of velocity with age ~~remains~~is present. However, ~~what~~it is ~~seen~~also observed (Fig. 8b) ~~is~~ that, on average, subduction zones with older ~~plate~~plates at the trench tend to be bigger, like the present-day Pacific and Indo/~~Australian-Australia~~ plate, than those subducting younger material at the trench, such as the present-day Cocos, Nazca and Juan de Fuca.

Previous (thermo-)mechanical models show that the age of the subducting plate strongly affects subduction dynamics. Older plates, i.e. those with ~~high~~older age at the trench, are colder and therefore denser and stronger. Consequently, they exert more pull force and are harder to bend, resulting in higher subduction velocities and higher trench retreat rates (Bellahsen et al., 2005; Capitanio et al., 2007; Stegman et al., 2010; Garel et al., 2014). A consequence of the observed correlation of average age at the trench and plate size is that plates with a stronger slab pull tend to also have larger surface area and hence a stronger resisting basal drag. This provides a mechanism that offsets the velocity enhancing effect of larger driving forces of old plates, and could ~~(at least in part)~~ explain the observation that velocities of subducting plates on Earth, today and throughout the Cenozoic, do not increase with age but tend to be mostly ~~fall~~stable around 8-10 cm/yr (Fig. 8, Sdrolias and Müller, 2006; Goes et al., 2011).

Note that the relation between age and size is not a causal relationship, but a feature of the plate configuration that has dominated most of the Cenozoic. Early in the Cenozoic, there are several cases that deviate from the buffered velocity trend. At the start of the Cenozoic, much of the subduction surrounding the Pacific plate consumed relatively young lithosphere, even though the Pacific plate itself was already large in size (horizontally aligned points at the top of the area–age trend in Fig. 8b). Other early Cenozoic deviations include very high velocities of the last remnants of the Izanagi and Kula plates (points with area of about 2500² km² and velocities around 17 cm/yr in Fig. 8a) and low velocities of Farallon plate (area about 6000² km² in Fig. 8a).

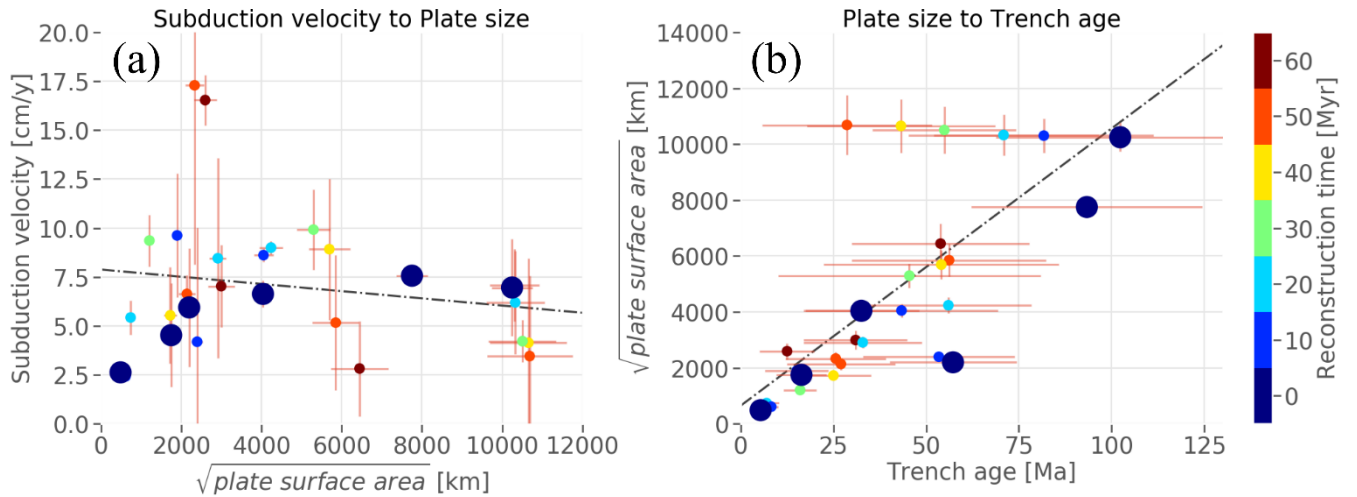


Figure 8: (a) Velocity of subducting plates from Müller et al. (2016) in lower mantle (plume) reference frame (O'Neill et al., 2005) throughout the Cenozoic, as a function of characteristic plate size (measured as the square root of plate surface area). (b) Plate size as a function of age at the trench for subducting plates throughout the Cenozoic. Maps showing the subduction zones included at each time can be found in Fig. C4S3-1. Blue bold circles represent data from present-day subducting plates. Linear regression fits (black lines) show that there is no resolvable trend of velocity with plate size (p-value 0.351, R^2 0.03) while there is a trend of size with age (p value < 0.05 and R^2 of 0.52).

Previous models documented that older plates tend to drive more trench retreat due to both their larger bending strength and their larger negative buoyancy (e.g., Capitanio et al., 2007; Stegman et al., 2010; Garel et al., 2014). This has been suggested to help explain the difference between Cenozoic subduction styles along the western Pacific (subducting mainly older plate with significant trench retreat) and eastern Pacific (subducting younger plates with low trench retreat contributions) (Goes et al., 2017). Our results suggest that plate size may further enhance these differences, as the high basal drag exerted on the dominantly westward-subducting large Pacific plate would favour more trench retreat than for the smaller eastward-subducting Cocos, Nazca and Juan de Fuca plates.

5 Conclusions

We have presented a set of 2D models to examine the role of basal drag in subduction dynamics. Previous studies have reached contradictory conclusions, with some proposing that drag between the subducting plate and the underlying asthenosphere plays only a small role in dictating the subduction force balance (e.g. Conrad and Hager, 1999; Billen and Arredondo, 2018; Wolf and Huismans, 2019), but others invoking a more significant role for basal drag in controlling subduction and plate motions on Earth (e.g. Conrad and Lithgow-Bertelloni, 2006). A low contribution of basal drag could explain the lack of a correlation between plate velocity and size (Conrad and Hager, 1999). Furthermore, the observation that trench migration velocities are mostly low compared to convergence velocities, can be either positive or negative in sign (Billen and Arredondo, 2018), and may be the result of a high ratio of lithosphere to asthenosphere viscosity drag (Conrad

and Hager, 1999; Höink and Lenardic, 2008; Billen and Arredondo, 2018), is also suggestive of a low contribution from basal drag.

Our 2D numerical models comprise a single subduction system with a mobile trench and composite non-linear rheology. We consider long and short subducting plate models to evaluate the effect of plate length and the associated basal drag. The set-up of these regional subduction models is similar to those of previous studies, which have been used to elucidate how slab buoyancy, slab strength, slab interaction with the upper-lower mantle boundary or subduction-upper plate interaction influence subduction dynamics (e.g. Bellahsen et al., 2005; Capitanio et al., 2007, 2009; Stegman et al., 2010; Čížková and Bina, 2013; Garel et al., 2014; Agrusta et al., 2017; Billen and Arredondo, 2018; Wolf and Huisman, 2019). We found that basal drag limits subduction velocities for our reference models and models with a lower asthenospheric viscosity (in a range consistent with likely viscosities on Earth and still allowing for steady subduction, without rapid slab detachment), leading to lithosphere-asthenosphere viscosity ratios of a factor 10^3 to 10^4 . Models with a low-viscosity asthenosphere do reduce the contribution of trench motion to plate convergence to more Earth-like values, as observed in previous studies (e.g. Capitanio et al., 2007; Billen and Arredondo, 2018). They also allow for periods of trench retreat and advance (Billen and Arredondo, 2018), although we note that trench advance with reclining/vertical slab geometries as observed in nature probably requires additional forcing (e.g. by upwellings or other forces within the global plate system).

Strengthening the lithosphere can significantly lower the dependency of velocity on plate length but requires strengthening by as much as a factor of 10, (to maximum viscosity of 10^{26} Pa s), which is an upper bound: our models that incorporate lithospheric strengthening of this magnitude often preclude subduction. Although it has been shown that the relative strength of the lithosphere to asthenosphere is important in controlling the dynamics of subduction (Höink and Lenardic, 2008, 2010; Ribe, 2010), with non-linear rheologies, increasing lithosphere strength and decreasing asthenosphere strength have distinct effects.

Basal drag values in our models range from a few percent of slab pull (in the strongest lithosphere cases) to up to 10-30%. Similar values are estimated in analytical calculations of basal drag to pull ratio assuming a reasonable set of parameters for the Pacific and Cocos plate. This, together with results from global flow models where basal drag by whole mantle flow has been shown to be important to reproduce patterns of plate motion (Lithgow-Bertelloni and Richards, 1998; Becker and O'Connell, 2001; Conrad and Lithgow-Bertelloni, 2006), indicates that basal drag is a substantial contributor towards the subduction force balance, of the same order as effective slab pull (i.e. slab pull minus the viscous resistance to sinking) and ridge push.

Based upon an analysis of ~~Cenoziea~~ Cenozoic plate motion ~~reconstructions,~~ reconstruction (Müller et al., 2016), we suggest that the reason that most plates ~~move~~ in the past 60 Myr moved at velocities around 8-10 cm/yr is because the plate configuration during this era was such that plate size ~~correlates~~ correlated with plate age at the trench ~~(i.e., both driving and resisting forces increase~~ increased together). Note however, that this correlation between size and age is not causal and may not have existed in other times of Earth history. As a result, during the Cenozoic, the increase in basal drag more or less ~~balances~~ balanced the increase in plate velocity induced by increased slab pull with increasing age. ~~This~~ Such co-

~~dependency variations~~ between plate velocity, age and ~~lengthsize~~ should be considered in regional models of subduction systems.

~~Code availability~~

~~Fluidity is publicly available online at <https://fluidityproject.github.io/>~~

~~Author contribution~~

~~Lior Suchoy is the main researcher of the project.~~

~~Saskia Goes supervised the project and took part in every aspect of it.~~

~~Benjamin Maunder assisted in designing the models and provided creative solutions for technical difficulties, helped in analysing the results of the models and provided the code used for the Self-Consistent Rheology model.~~

~~Fanny Garel provided the design of the model which was used as the basis of the Reference model and commented on the interpretation and limitation of the results of the model.~~

~~Rhodri Davies designed the Stokes branch of Fluidity, assisted in the design and setup of the Reference model and commented on the technical aspects of paper.~~

Acknowledgments

~~We thank Ömer Bodur and an anonymous referee for their supportive and constructive reviews.~~ Lior Suchoy was funded by an EPSRC DTP studentship (EP/N509486/1), Ben Maunder and Saskia Goes were funded under NERC grant NE/K010743/1. DRD acknowledges support from the Australian Research Council, under grant number DP170100058.

References

Agrusta, R., Goes, S. and van Hunen, J.: Subducting-slab transition-zone interaction: Stagnation, penetration and mode switches, Earth Planet. Sci. Lett., 464, 10–23, doi: 10.1016/j.epsl.2017.02.005, 2017.

Alsaif, M., Garel, F., Gueydan, F. and Davies, D. R.: Upper plate deformation and trench retreat modulated by subduction-driven shallow asthenospheric flows, Earth Planet. Sci. Lett., 532, 116013, doi: 10.1016/j.epsl.2019.116013, 2020.

Becker, T. W. and Faccenna, C.: Mantle conveyor beneath the Tethyan collisional belt, Earth Planet. Sci. Lett., 310(3–4), 453–461, doi: 10.1016/j.epsl.2011.08.021, 2011.

Becker, T. W. and Kawakatsu, H.: On the role of anisotropic viscosity for plate-scale flow, Geophysical Research Letters, 38(17), doi:10.1029/2011GL048584, 2011.

Becker, T. W. and O’Connell, R. J.: Predicting plate velocities with mantle circulation models, Geochemistry, Geophys. Geosystems, 2(12), doi: 10.1029/2001GC000171, 2001.

- Bellahsen, N., Faccenna, C. and Funiciello, F.: Dynamics of subduction and plate motion in laboratory experiments: Insights into the “plate tectonics” behavior of the Earth, *J. Geophys. Res. Solid Earth*, 110(1), 1–15, doi: 10.1029/2004JB002999, 2005.
- Billen, M. I. and Arredondo, K. M.: Decoupling of plate-asthenosphere motion caused by non-linear viscosity during slab folding in the transition zone, *Phys. Earth Planet. Inter.*, 281, 17–30, doi: 10.1016/j.pepi.2018.04.011, 2018.
- Billen, M. I. and Hirth, G.: Rheologic controls on slab dynamics, *Geochemistry, Geophys. Geosystems*, 8(8), Q08012, doi: 10.1029/2007GC001597, 2007.
- Bokelmann, G. H. R. and Silver, P. G.: Shear stress at the base of shield lithosphere, *Geophys. Res. Lett.*, 29(23), 6-1-6-4, doi: 10.1029/2002GL015925, 2002.
- Buffett, B. A. and Rowley, D. B.: Plate bending at subduction zones: Consequences for the direction of plate motions, *Earth Planet. Sci. Lett.*, 245(1–2), 359–364, doi: 10.1016/j.epsl.2006.03.011, 2006.
- Burov, E. B.: Rheology and strength of the lithosphere, *Mar. Pet. Geol.*, 28(8), 1402–1443, doi: 10.1016/j.marpetgeo.2011.05.008, 2011.
- Capitanio, F. A.: Lithospheric-age control on the migrations of oceanic convergent margins, *Tectonophysics*, 593, 193–200, doi: 10.1016/j.tecto.2013.03.003, 2013.
- Capitanio, F. A., Morra, G. and Goes, S.: Dynamic models of downgoing plate-buoyancy driven subduction: Subduction motions and energy dissipation, *Earth Planet. Sci. Lett.*, 262(1–2), 284–297, doi: 10.1016/j.epsl.2007.07.039, 2007.
- Capitanio, F. A., Morra, G. and Goes, S.: Dynamics of plate bending at the trench and slab-plate coupling, *Geochemistry, Geophys. Geosystems*, 10(4), Q04002, doi: 10.1029/2008GC002348, 2009.
- Carlson, R. L., Hilde, T. W. C. and Uyeda, S.: The driving mechanism of plate tectonics: Relation to age of the lithosphere at trenches, *Geophys. Res. Lett.*, 10(4), 297–300, doi: 10.1029/GL010i004p00297, 1983.
- Čížková, H. and Bina, C. R.: Effects of mantle and subduction-interface rheologies on slab stagnation and trench rollback, *Earth Planet. Sci. Lett.*, 379, 95–103, doi: 10.1016/j.epsl.2013.08.011, 2013.
- Čížková, H., Van Hunen, J., Van den Berg, A. P. and Vlaar, N. J.: The influence of rheological weakening and yield stress on the interaction of slabs with the 670 km discontinuity, *Earth Planet. Sci. Lett.*, 199(3–4), 447–457, doi: 10.1016/S0012-821X(02)00586-1, 2002.
- Clark, S. R., Stegman, D. and Müller, R. D.: Episodicity in back-arc tectonic regimes, *Phys. Earth Planet. Inter.*, 171(1–4), 265–279, doi: 10.1016/j.pepi.2008.04.012, 2008.
- Colli, L., Stotz, I., Bunge, H. P., Smethurst, M., Clark, S., Iaffaldano, G., Tassara, A., Guillocheau, F. and Bianchi, M. C.: Rapid South Atlantic spreading changes and coeval vertical motion in surrounding continents: Evidence for temporal changes of pressure-driven upper mantle flow, *Tectonics*, 33(7), 1304–1321, doi: 10.1002/2014TC003612, 2014.
- Coltice, N., Husson, L., Faccenna, C. and Arnould, M.: What drives tectonic plates?, *Sci. Adv.*, 5(10), eaax4295, doi: 10.1126/sciadv.aax4295, 2019.

- Conrad, C. P. and Hager, B. H.: Effects of plate bending and fault strength at subduction zones on plate dynamics, *J. Geophys. Res. Solid Earth*, 104(B8), 17551–17571, doi: 10.1029/1999jb900149, 1999.
- Conrad, C. P. and Lithgow-Bertelloni, C.: How mantle slabs drive plate tectonics, *Science* (80-.), 298(5591), 207–209, doi: 10.1126/science.1074161, 2002.
- Conrad, C. P. and Lithgow-Bertelloni, C.: Influence of continental roots and asthenosphere on plate-mantle coupling, *Geophys. Res. Lett.*, 33(5), doi: 10.1029/2005GL025621, 2006.
- Conrad, C. P., Bilek, S. and Lithgow-Bertelloni, C.: Great earthquakes and slab pull: Interaction between seismic coupling and plate-slab coupling, *Earth Planet. Sci. Lett.*, 218(1–2), 109–122, doi: 10.1016/S0012-821X(03)00643-5, 2004.
- 570 Davies, D. R., Wilson, C. R. and Kramer, S. C.: Fluidity: A fully unstructured anisotropic adaptive mesh computational modeling framework for geodynamics, *Geochemistry, Geophys. Geosystems*, 12(6), doi: 10.1029/2011GC003551, 2011.
- Dziewonski, A. M. and Anderson, D. L.: Preliminary reference Earth model, *Phys. Earth Planet. Inter.*, 25(4), 297–356, doi: 10.1016/0031-9201(81)90046-7, 1981.
- Forsyth, D. and Uyeda, S.: On the Relative Importance of the Driving Forces of Plate Motion, *Geophys. J. R. Astron. Soc.*, 575 43(1), 163–200, doi: 10.1111/j.1365-246X.1975.tb00631.x, 1975.
- French, S., Lekic, V. and Romanowicz, B.: Waveform tomography reveals channeled flow at the base of the oceanic asthenosphere, *Science* (80-.), 342(6155), 227–230, doi: 10.1126/science.1241514, 2013.
- Garel, F., Goes, S., Davies, D. R., Davies, J. H., Kramer, S. C. and Wilson, C. R.: Interaction of subducted slabs with the mantle transition-zone: A regime diagram from 2-D thermo-mechanical models with a mobile trench and an overriding plate, *Geochemistry, Geophys. Geosystems*, 15(5), 1739–1765, doi: 10.1002/2014GC005257, 2014.
- 580 Di Giuseppe, E., Faccenna, C., Funiciello, F., van Hunen, J. and Giardini, D.: On the relation between trench migration, seafloor age, and the strength of the subducting lithosphere, *Lithosphere*, 1(2), 121–128, doi: 10.1130/L26.1, 2009.
- Goes, S., Capitanio, F. A., Morra, G., Seton, M. and Giardini, D.: Signatures of downgoing plate-buoyancy driven subduction in Cenozoic plate motions, *Phys. Earth Planet. Inter.*, 184(1–2), 1–13, doi: 10.1016/j.pepi.2010.10.007, 2011.
- 585 Goes, S., Agrusta, R., van Hunen, J. and Garel, F.: Subduction-transition zone interaction: A review, *Geosphere*, 13(3), 644–664, doi: 10.1130/GES01476.1, 2017.
- Hacker, B. R. and Gerya, T. V.: Paradigms, new and old, for ultrahigh-pressure tectonism, *Tectonophysics*, 603, 79–88, doi:10.1016/j.tecto.2013.05.026, 2013.
- Höink, T. and Lenardic, A.: Three-dimensional mantle convection simulations with a low-viscosity asthenosphere and the relationship between heat flow and the horizontal length scale of convection, *Geophys. Res. Lett.*, 35(10), doi: 10.1029/2008GL033854, 2008.
- 590 Höink, T. and Lenardic, A.: Long wavelength convection, Poiseuille-Couette flow in the low-viscosity asthenosphere and the strength of plate margins, *Geophys. J. Int.*, 180(1), 23–33, doi: 10.1111/j.1365-246X.2009.04404.x, 2010.
- Husson, L., Guillaume, B., Funiciello, F., Faccenna, C. and Royden, L. H.: Unraveling topography around subduction zones from laboratory models, *Tectonophysics*, 526–529, 5–15, doi: 10.1016/j.tecto.2011.09.001, 2012.
- 595

- Korenaga, J. and Karato, S. I.: A new analysis of experimental data on olivine rheology, *J. Geophys. Res. Solid Earth*, 113(2), doi: 10.1029/2007JB005100, 2008.
- Kramer, S. C., Wilson, C. R. and Davies, D. R.: An implicit free surface algorithm for geodynamical simulations, *Phys. Earth Planet. Inter.*, 194–195, 25–37, doi: 10.1016/j.pepi.2012.01.001, 2012.
- 600 Lallemand, S., Heuret, A. and Boutelier, D.: On the relationships between slab dip, back-arc stress, upper plate absolute motion, and crustal nature in subduction zones, *Geochemistry, Geophys. Geosystems*, 6(9), doi: 10.1029/2005GC000917, 2005.
- Lee, C. and King, S. D.: Dynamic buckling of subducting slabs reconciles geological and geophysical observations, *Earth Planet. Sci. Lett.*, 312(3–4), 360–370, doi: 10.1016/j.epsl.2011.10.033, 2011.
- 605 Lithgow-Bertelloni, C. and Richards, M. A.: The dynamics of cenozoic and mesozoic plate motions, *Rev. Geophys.*, 36(1), 27–78, doi: 10.1029/97RG02282, 1998.
- Maunder, B., van Hunen, J., Magni, V. and Bouilhol, P.: Relamination of mafic subducting crust throughout Earth’s history, *Earth Planet. Sci. Lett.*, 449, 206–216, doi: 10.1016/j.epsl.2016.05.042, 2016.
- Met Office: Cartopy: a cartographic python library with a Matplotlib interface, [online] Available from:
 610 <https://scitools.org.uk/cartopy>, 2015.
- Müller, R. D., Seton, M., Zahirovic, S., Williams, S. E., Matthews, K. J., Wright, N. M., Shephard, G. E., Maloney, K. T., Barnett-Moore, N., Hosseinpour, M., Bower, D. J. and Cannon, J.: Ocean Basin Evolution and Global-Scale Plate Reorganization Events Since Pangea Breakup, *Annu. Rev. Earth Planet. Sci.*, 44(1), 107–138, doi: 10.1146/annurev-earth-060115-012211, 2016.
- 615 Müller, R. D., Cannon, J., Qin, X., Watson, R. J., Gurnis, M., Williams, S., Pfaffelmoser, T., Seton, M., Russell, S. H. J. and Zahirovic, S.: GPlates: Building a Virtual Earth Through Deep Time, *Geochemistry, Geophys. Geosystems*, 19(7), 2243–2261, doi: 10.1029/2018GC007584, 2018.
- O’Neill, C., Müller, D. and Steinberger, B.: On the uncertainties in hot spot reconstructions and the significance of moving hot spot reference frames, *Geochemistry, Geophys. Geosystems*, 6(4), doi: 10.1029/2004GC000784, 2005.
- 620 Paulson, A. and Richards, M. A.: On the resolution of radial viscosity structure in modelling long-wavelength postglacial rebound data, *Geophys. J. Int.*, 179(3), 1516–1526, doi: 10.1111/j.1365-246X.2009.04362.x, 2009.
- Ranalli, G.: Rheology of the earth, *Tectonophysics*, doi: 10.1016/s0040-1951(96)00042-x, 1995.
- Ribe, N. M.: Bending mechanics and mode selection in free subduction: A thin-sheet analysis, *Geophys. J. Int.*, 180(2), 559–576, doi: 10.1111/j.1365-246X.2009.04460.x, 2010.
- 625 Schellart, W. P.: Quantifying the net slab pull force as a driving mechanism for plate tectonics, *Geophys. Res. Lett.*, 31(7), L07611, doi: 10.1029/2004GL019528, 2004.
- Schellart, W. P., Freeman, J., Stegman, D. R., Moresi, L. and May, D.: Evolution and diversity of subduction zones controlled by slab width, *Nature*, 446(7133), 308–311, doi: 10.1038/nature05615, 2007.

- 630 Sdrolias, M. and Müller, R. D.: Controls on back-arc basin formation, *Geochemistry, Geophys. Geosystems*, 7(4), doi: 10.1029/2005GC001090, 2006.
- Stegman, D. R., Farrington, R., Capitanio, F. A. and Schellart, W. P.: A regime diagram for subduction styles from 3-D numerical models of free subduction, *Tectonophysics*, 483(1–2), 29–45, doi: 10.1016/j.tecto.2009.08.041, 2010.
- Stotz, I. L., Iaffaldano, G. and Davies, D. R.: Pressure-Driven Poiseuille Flow: A Major Component of the Torque-Balance Governing Pacific Plate Motion, *Geophys. Res. Lett.*, 45(1), 117–125, doi: 10.1002/2017GL075697, 2018.
- 635 Turcotte, D. L. and Schubert, G.: *Geodynamics*, 2nd ed., Cambridge University Press, Cambridge. ~~[online] Available from: <http://dx.doi.org/10.1017/CBO9780511807442> (Accessed 16 June 2015).~~, 2002.
- Le Voci, G., Davies, D. R., Goes, S., Kramer, S. C. and Wilson, C. R.: A systematic 2-D investigation into the mantle wedge's transient flow regime and thermal structure: Complexities arising from a hydrated rheology and thermal buoyancy, *Geochemistry, Geophys. Geosystems*, 15(1), 28–51, doi: 10.1002/2013GC005022, 2014.
- 640 Williams, S., Flament, N., Dietmar Müller, R. and Butterworth, N.: Absolute plate motions since 130 Ma constrained by subduction zone kinematics, *Earth Planet. Sci. Lett.*, 418, 66–77, doi: 10.1016/j.epsl.2015.02.026, 2015.
- Wolf, S. G. and Huismans, R. S.: Mountain Building or Backarc Extension in Ocean-Continent Subduction Systems: A Function of Backarc Lithospheric Strength and Absolute Plate Velocities, *J. Geophys. Res. Solid Earth*, 124(7), 7461–7482, doi: 10.1029/2018JB017171, 2019.
- 645 Zhong, S. and Davies, G. F.: Effects of plate and slab viscosities on the geoid, *Earth Planet. Sci. Lett.*, 170(4), 487–496, doi: 10.1016/S0012-821X(99)00124-7, 1999.

Code availability

Fluidity is publicly available online at <https://fluidityproject.github.io/>.

Author contribution

- 650 LS performed and analysed all models and led the writing of the paper. SG supported the model design, analysis and interpretation and writing of the paper. BM assisted in designing and analysing the models and provided the code used for the self-consistent rheology model. FG built the original model used as the basis of the Reference model and commented on the results and paper. RD provided assistance with running Fluidity, assisted in the design and setup of the Reference model and commented on the paper.

Supplementary Material for:

Effects of basal drag on subduction dynamics from 2D numerical models

Lior Suchoy, Saskia Goes, Benjamin Maunder, Fanny Garel, Rhodri Davies

5 This supplement comprises three main sections and references section:

S1. Governing equations and rheology calculations for the numerical models

S2. Illustration of the evolution of all models discussed in the main text

S3. Cenozoic subduction zone parameters

10

S1. Governing equations and rheology calculations ~~in~~for the numerical models

15 We solve flow for incompressible Stokes fluid, under the Boussinesq approximation, assuming mass, momentum and energy conservation equations:

$$\partial_i u_i = 0$$

(A1S1.1)

$$\partial_i \sigma_{ij} + \Delta \rho g_j = 0$$

20 (A2S1.2)

$$\frac{\partial T}{\partial t} + u_i \partial_i T - \kappa \partial_i^2 T = 0$$

(A3S1.3)

where u is the velocity, σ is the stress tensor, g is gravity, T is temperature, κ is the thermal diffusivity and $\Delta \rho = -\alpha \rho_s \Delta T$ is the density difference due to temperature, with α the coefficient of thermal expansion, ρ_s the reference (surface) mantle density and ΔT the difference in temperature from the surface.

25 Viscosity is therefore the ratio of deviatoric stress to strain rate:

$$\mu = \frac{\tau_{ij}}{2\dot{\epsilon}_{ij}} = \frac{\sigma_{ij} + P\delta_{ij}}{2\dot{\epsilon}_{ij}}$$

(A4S1.4)

where τ is the deviatoric stress, $\dot{\epsilon}$ is the strain rate, P is the dynamic pressure and δ_{ij} is the delta function. The viscosity is
30 calculated in our models using:

$$\mu = \left(\frac{1}{\mu_{diff}} + \frac{1}{\mu_{disl}} + \frac{1}{\mu_y} + \frac{1}{\mu_{Pie}} \right)^{-1}$$

(A5S1.5)

where μ_{diff} , μ_{disl} , μ_y and μ_{Pie} are the viscosities calculated using diffusion creep, dislocation creep, yielding mechanism
and simplified Pierels creep, respectively. The viscosities derived from diffusion, dislocation and Pierels creep are calculated
35 using the generalised equation:

$$\mu_{diff\backslash disl\backslash Pie} = A^{\frac{-1}{n}} \exp\left(\frac{E + P_l V}{nRT_{ad}}\right) \dot{\epsilon}_{II}^{\frac{1-n}{n}}$$

(A6S1.6)

$$P_l = \rho g D$$

(A7S1.7)

40 where A is a prefactor, n is the stress exponent, E and V are the activation energy and volume, respectively, P_l is the lithostatic pressure, R the gas constant, $\dot{\epsilon}_{II}$ is the second invariant of the strain rate tensor and D is the depth. T_{ad} is the temperature adjusted with an adiabatic gradient of 0.5°K/km in the upper mantle and 0.3°K/km in the lower mantle (Fowler, 2005). The yielding mechanism is calculated as:

$$\mu_y = \frac{\tau_y}{2\dot{\epsilon}_{II}} = \frac{\min(\tau_s + f_c P_l, \tau_{y\max})}{2\dot{\epsilon}_{II}}$$

45 (A8S1.8)

where τ_y is the yield stress, τ_s is the surface yield stress, f_c is the friction coefficient and $\tau_{y\max}$ is the maximum yield stress. The viscosity field is capped by both minimum and maximum values. The yielding viscosity is adjusted within the weak decoupling layer by applying a different friction coefficient:

$$\mu_{y\text{ weak}} = \frac{\min(\tau_s + f_{c\text{ weak}} P_l, \tau_{y\max})}{2\dot{\epsilon}_{II}}$$

50 (A9S1.9)

The initial temperature field in the lithosphere is calculated using the half-space cooling equation from Turcotte and Schubert (2002):

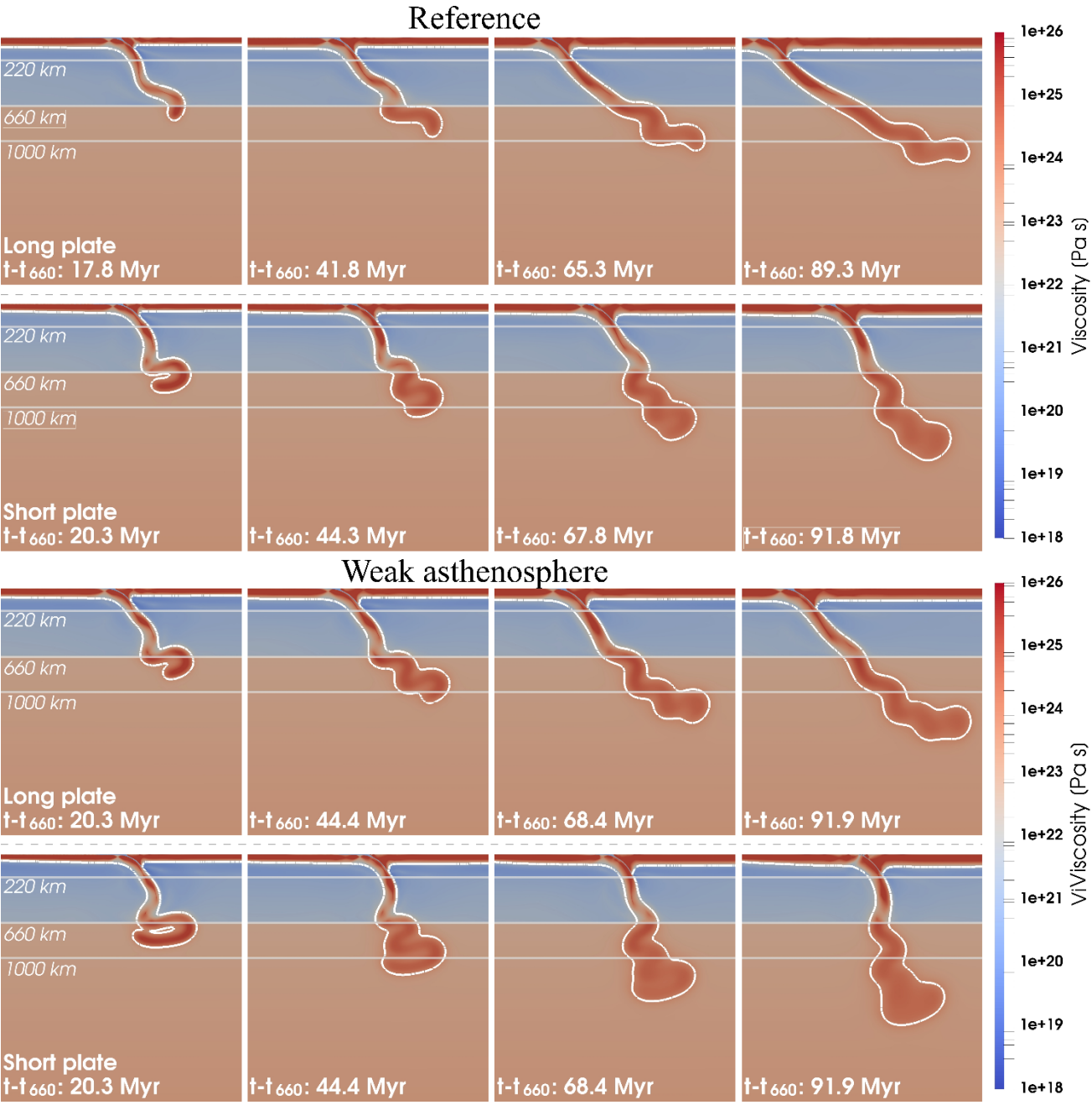
$$T = T_s + \Delta T \cdot \operatorname{erf}\left(\frac{D}{2\sqrt{\kappa t_{age}}}\right)$$

(~~A10~~S1.10)

55 where T_s is the surface temperature and t_{age} is the age.

Quantity	Symbol	Units	Value		
			UM (Reference)	UM (Self-Consistent)	LM
Gravity	g	$m \cdot s^{-2}$	9.8		
Thermal expansivity coefficient	α	K^{-1}	$3.0 \cdot 10^{-5}$		
Thermal diffusivity	κ	$m^2 \cdot s^{-1}$	10^{-6}		
Reference (surface) density	ρ_s	$kg \cdot m^{-3}$	3300.0		
Cold, surface temperature	T_s	K	273.0		
Hot, mantle temperature	T_m		1573.0		
Gas constant	R	$J \cdot K^{-1} \cdot mol^{-1}$	8.3145		
Maximum viscosity (Strong Lithosphere model)	μ_{max}	$Pa \cdot s$	10^{26}		
Maximum viscosity (Reference and all other models)			10^{25}		
Minimum viscosity	μ_{min}		10^{18}		
Diffusion Creep					
Activation energy	E	$J \cdot mol^{-1}$	$300.0 \cdot 10^3$	$335.0 \cdot 10^3$	$200.0 \cdot 10^3$
Activation volume	V	$m^3 \cdot mol^{-1}$	$4.0 \cdot 10^{-6}$	$5.0 \cdot 10^{-6}$	$1.5 \cdot 10^{-6}$
Pre-factor	A	$Pa^{-n} \cdot s^{-1}$	$3.0 \cdot 10^{-11}$	$1.5 \cdot 10^{-9}$	$6.0 \cdot 10^{-17}$
Stress exponent	n		1.0		
Dislocation Creep (UM)					
Activation energy	E	$J \cdot mol^{-1}$	$540.0 \cdot 10^3$	$472.0 \cdot 10^3$	$300.0 \cdot 10^3$
Activation volume	V	$m^3 \cdot mol^{-1}$	$12.0 \cdot 10^{-6}$	$11.0 \cdot 10^{-6}$	$2.0 \cdot 10^{-6}$
Pre-factor	A	$Pa^{-n} \cdot s^{-1}$	$5.0 \cdot 10^{-16}$	$1.34 \cdot 10^{-17}$	10^{-42}
Stress exponent	n		3.5	3.472	3.5
Peierls Creep (UM)					
Activation energy	E	$J \cdot mol^{-1}$	$540.0 \cdot 10^3$	$540.0 \cdot 10^3$	$300.0 \cdot 10^3$
Activation volume	V	$m^3 \cdot mol^{-1}$	$10.0 \cdot 10^{-6}$	$10.0 \cdot 10^{-6}$	$2.0 \cdot 10^{-6}$
Pre-factor	A	$Pa^{-n} \cdot s^{-1}$	10^{-150}	10^{-145}	10^{-300}
Stress exponent	n		20.0		
Yield Strength Law					
Surface yield strength	τ_s	MPa	2.0		
Friction coefficient	f_c		0.2		
Friction coefficient (decoupling layer)	$f_{c\ weak}$		0.02	0.02	0.02
Maximum yield strength	$\tau_{y\ max}$	MPa	10,000		

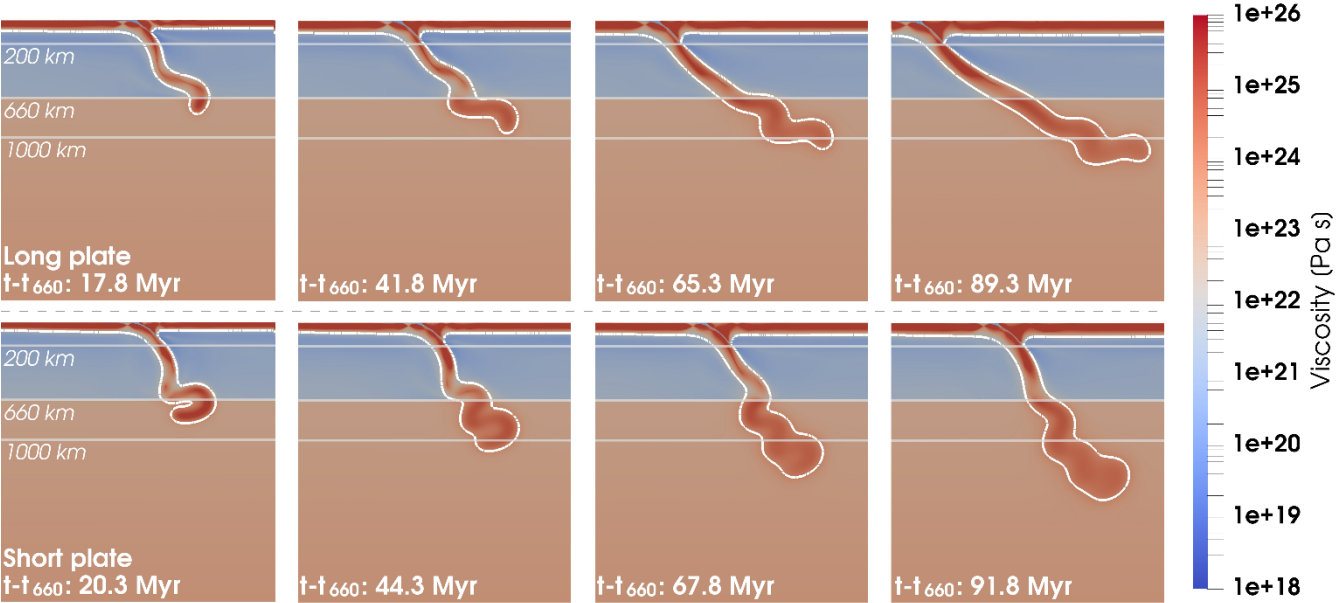
Table AS1+1: Physical and rheological parameters of all models.



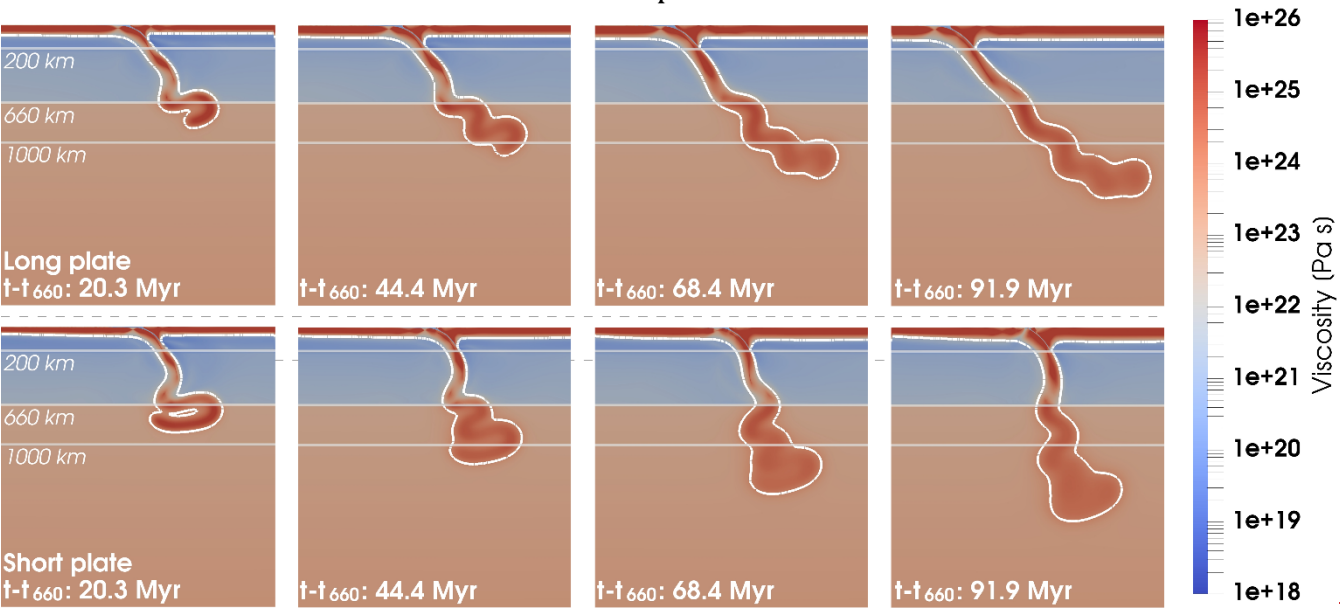
60 Figure S2-1: Viscosity field evolution at various times, similar to Fig. 3, for the long-plate case (top row of each model) and short-plate case (bottom row of each model) for all models. White contour marks the 1100 °C isotherm used as the outline of the lithosphere. The vertical and horizontal scales are identical and only part of the full model domain is shown. $t-t_{660}$

indicates the time since the initial interaction of the slab with the ULMB.

Reference

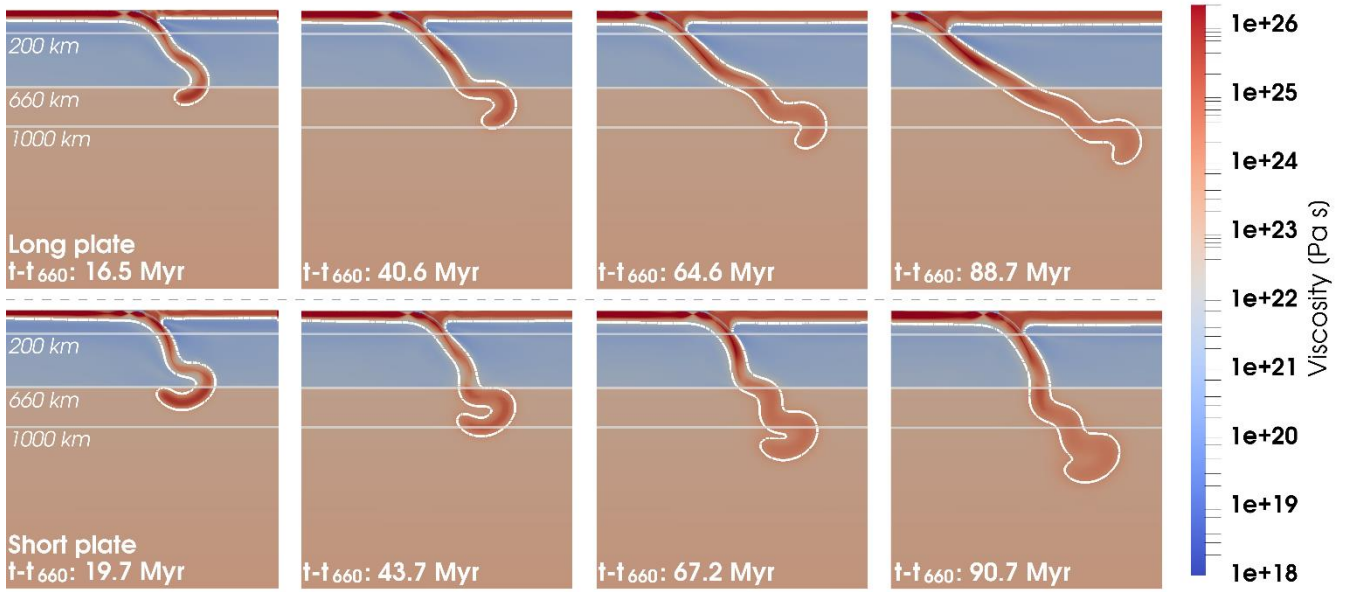


Weak asthenosphere

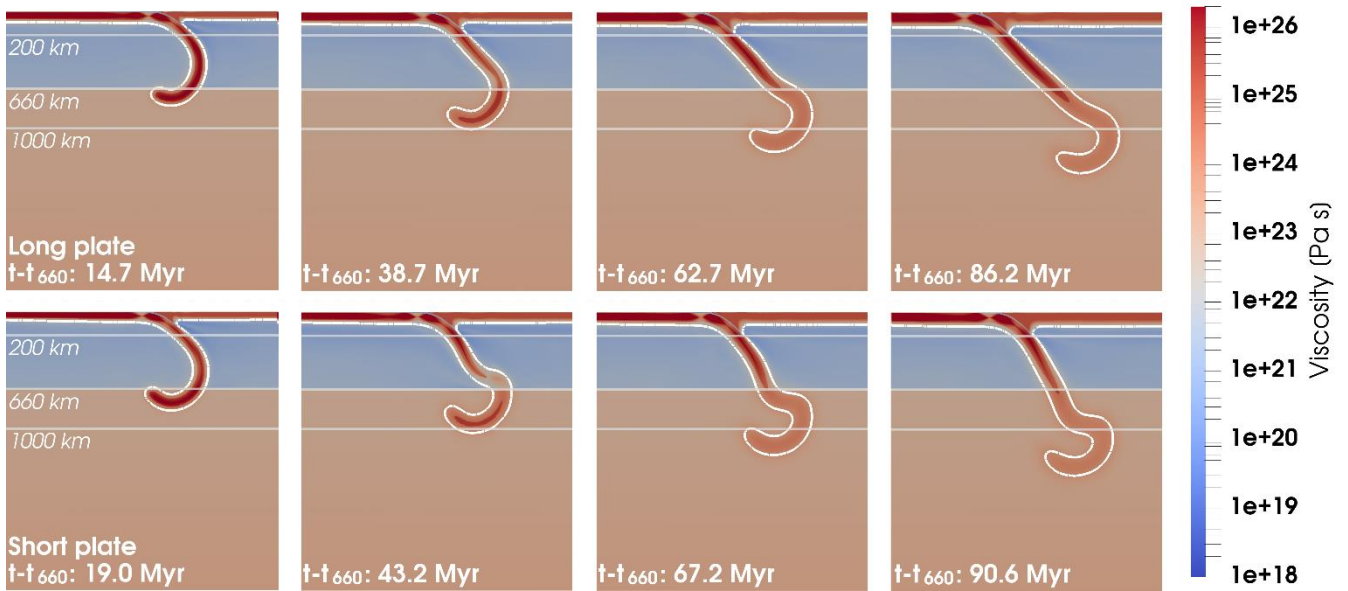


65 **Figure B1: Evolution of all types of models (top — Long models, bottom — Short models)**

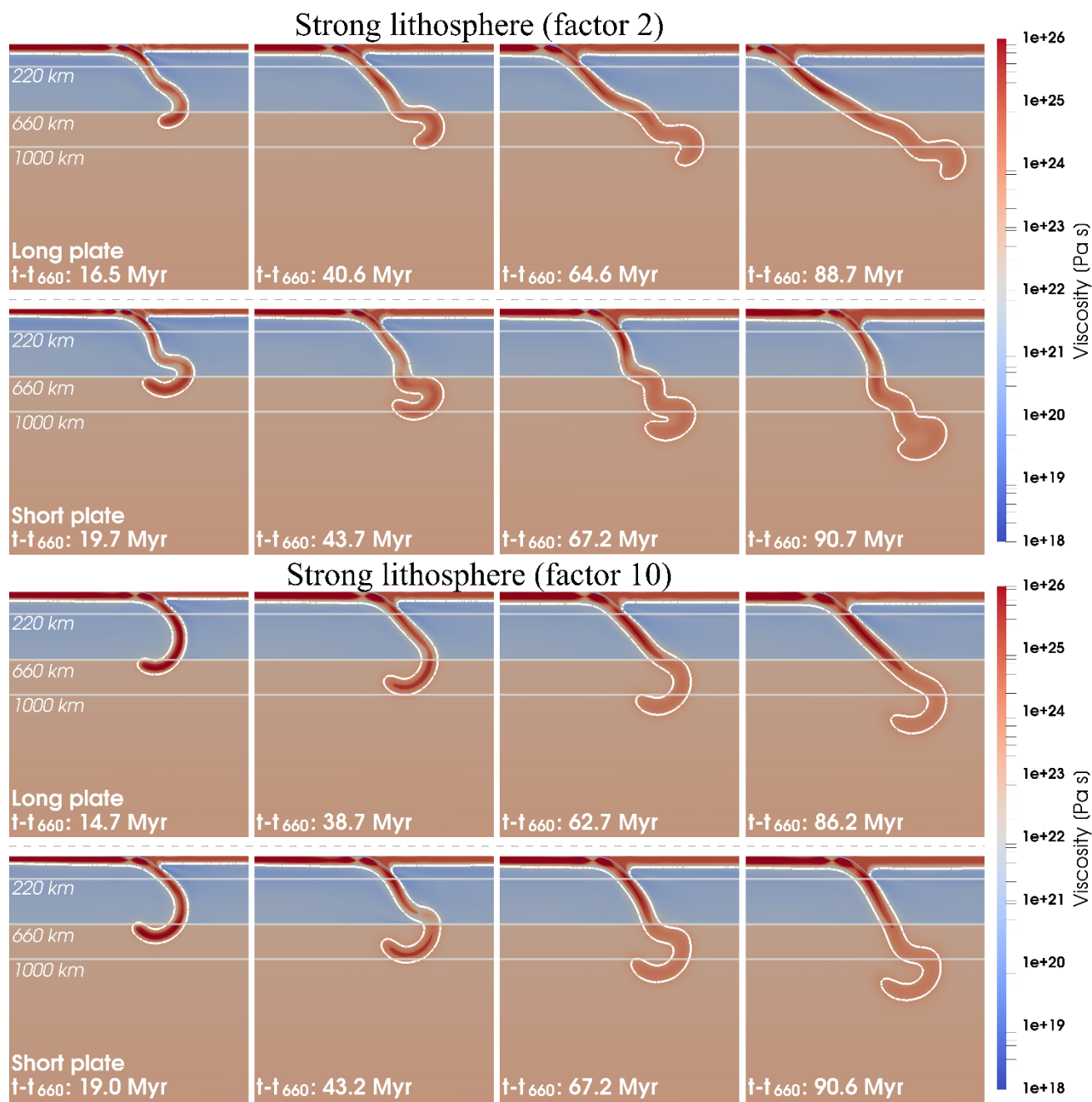
Strong lithosphere (factor 2)



Strong lithosphere (factor 10)

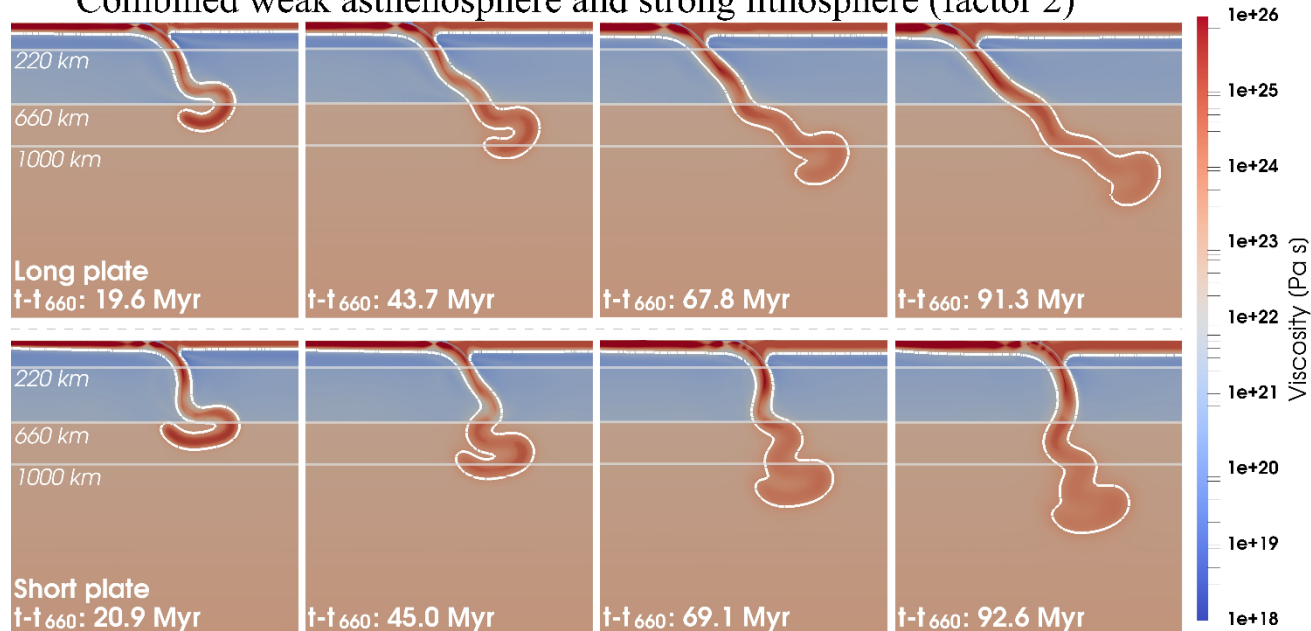


Grey lines mark 220 km, 660 km (ULMB) and 1000 km depths.



70 **Figure S2-1 (continued)**

Combined weak asthenosphere and strong lithosphere (factor 2)



Combined weak asthenosphere and strong lithosphere (factor 10)

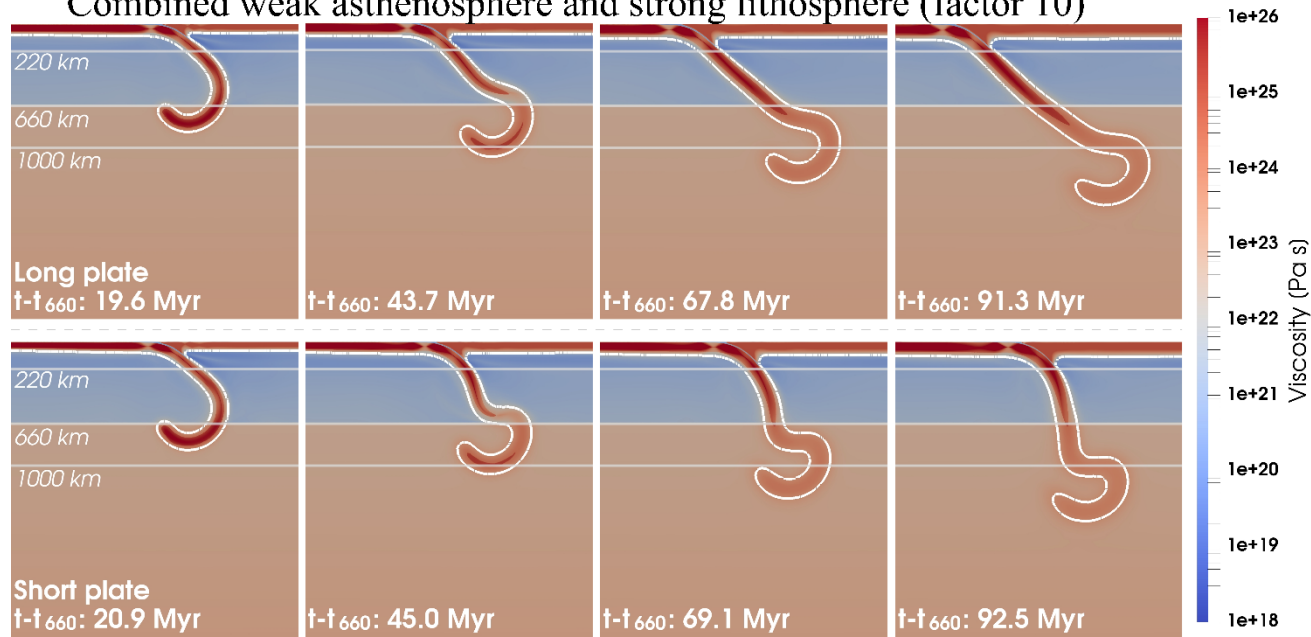
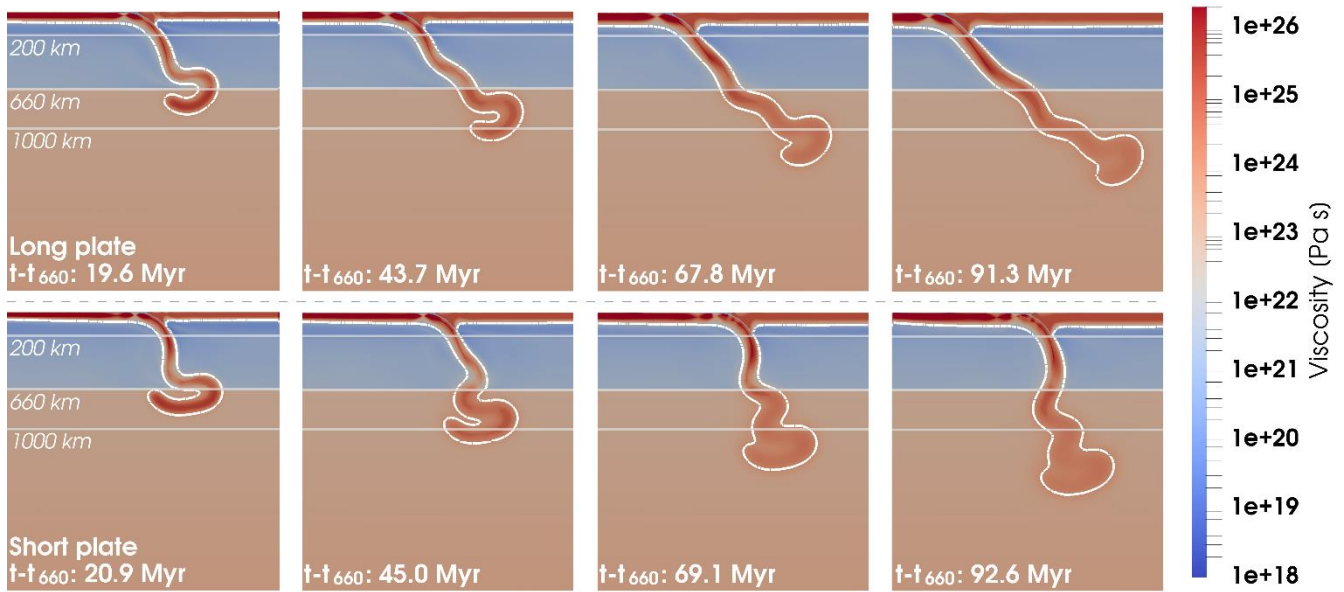
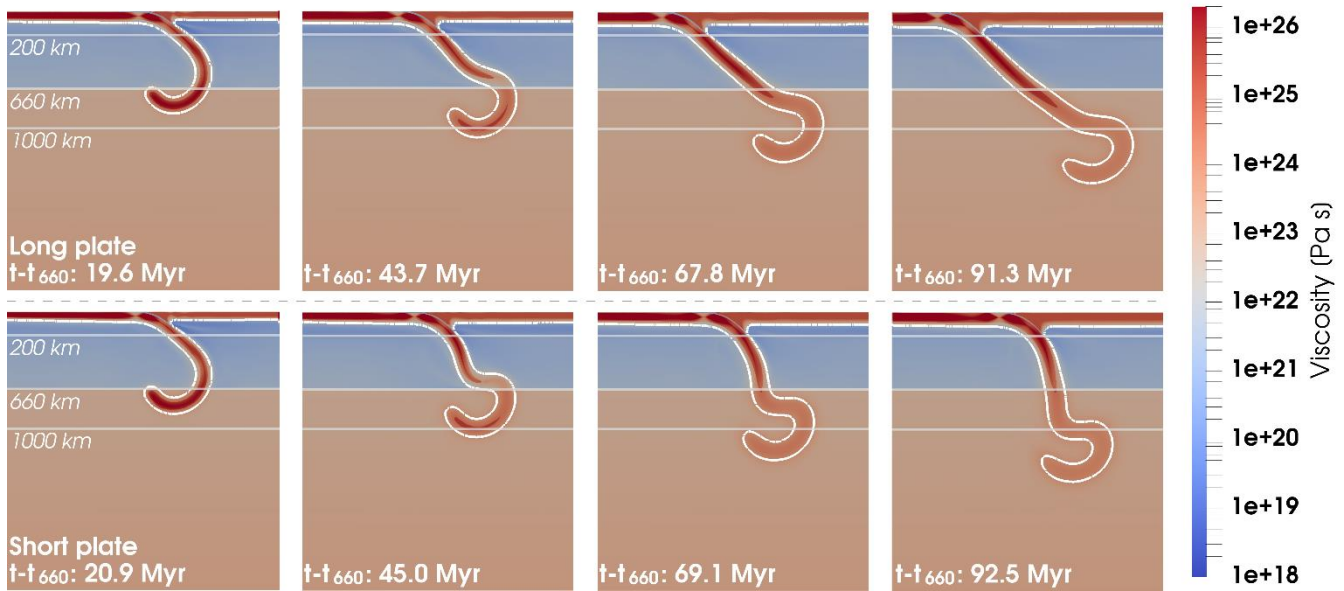


Figure B1 (continued) S2-1 (continued)

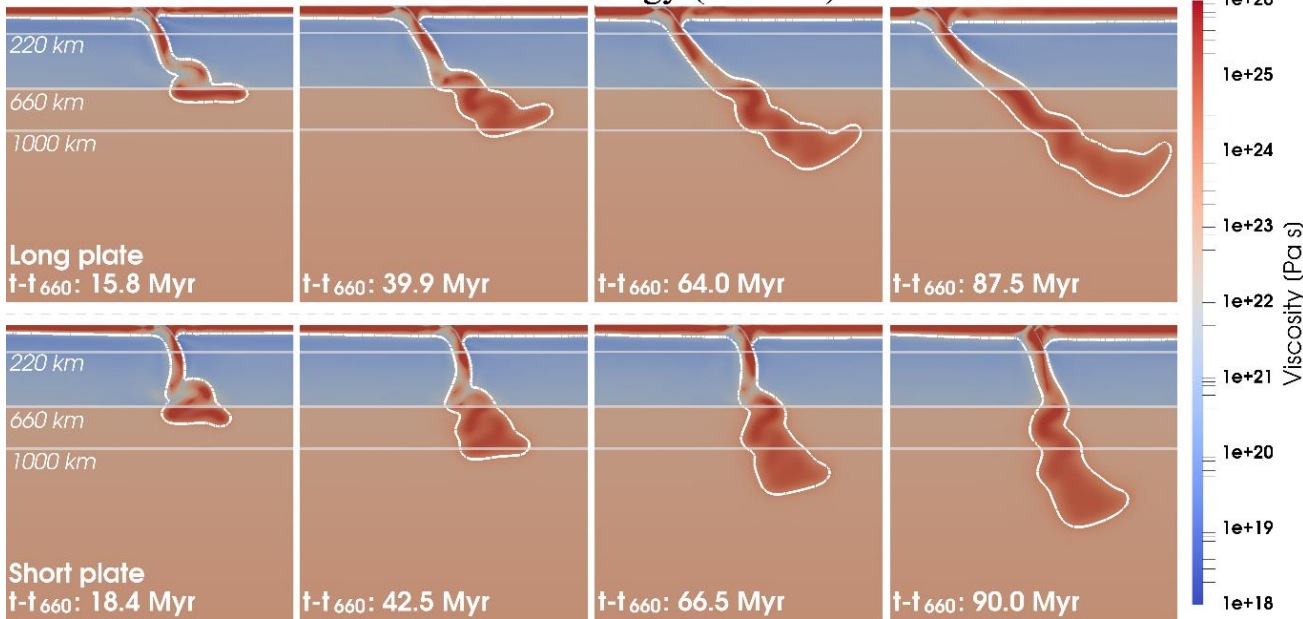
Combined weak asthenosphere and strong lithosphere (factor 2)



Combined weak asthenosphere and strong lithosphere (factor 10)



Self consistent rheology (factor 2)



75 **Figure B1 (continued)**

Reference

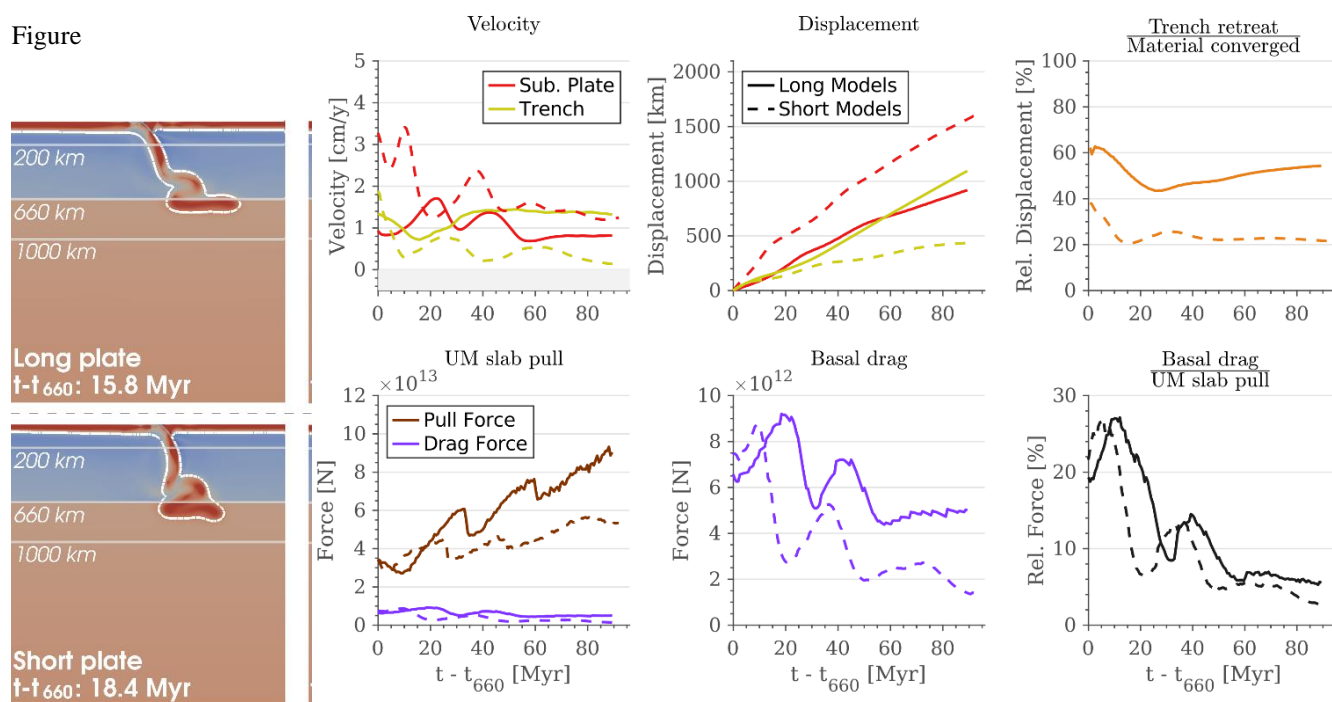


Figure B1 (continue)

Reference

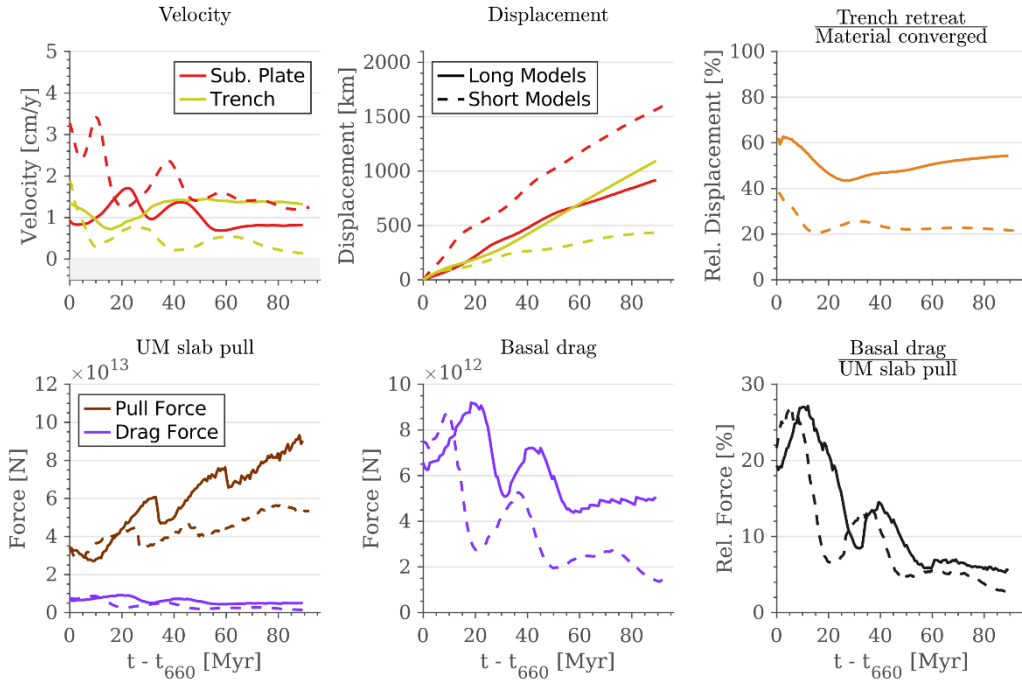
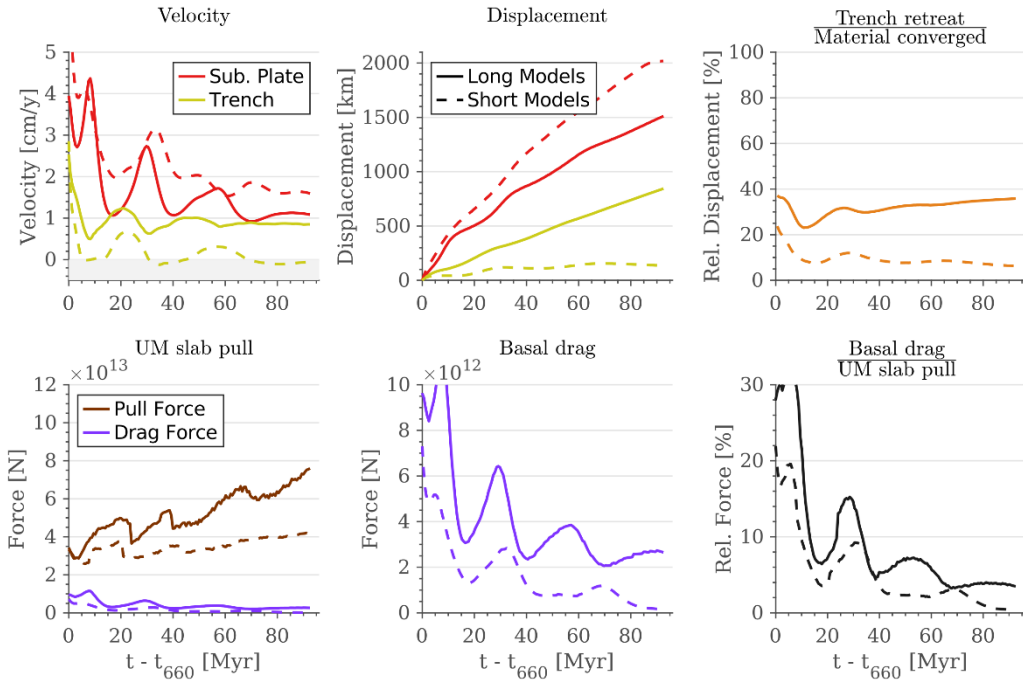
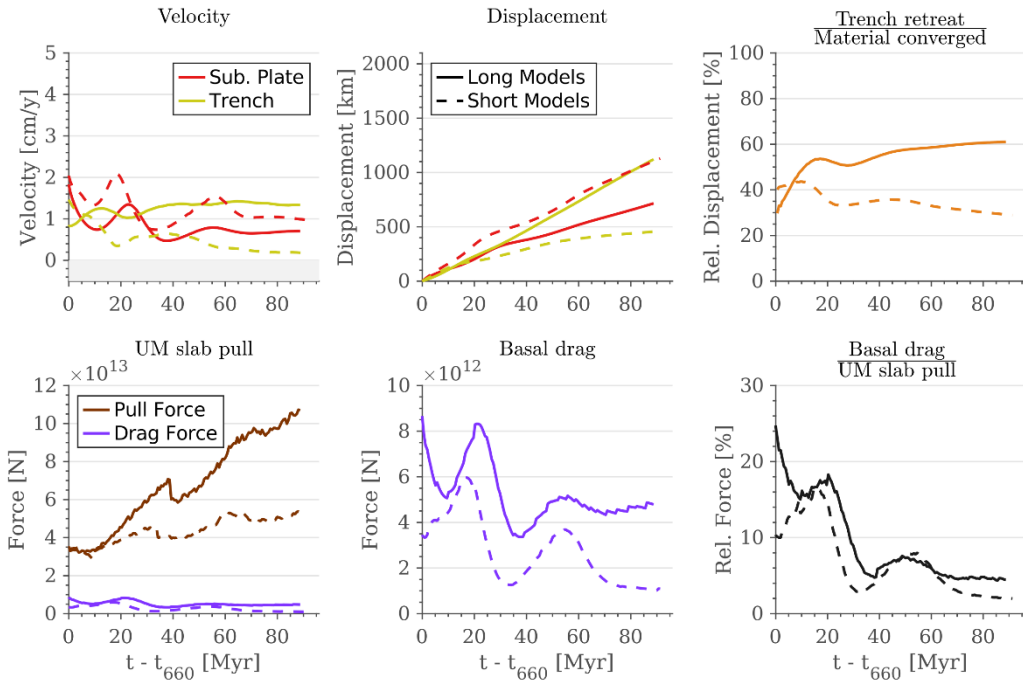


Figure B2: Evolution graphs (as Fig. 4) for all models

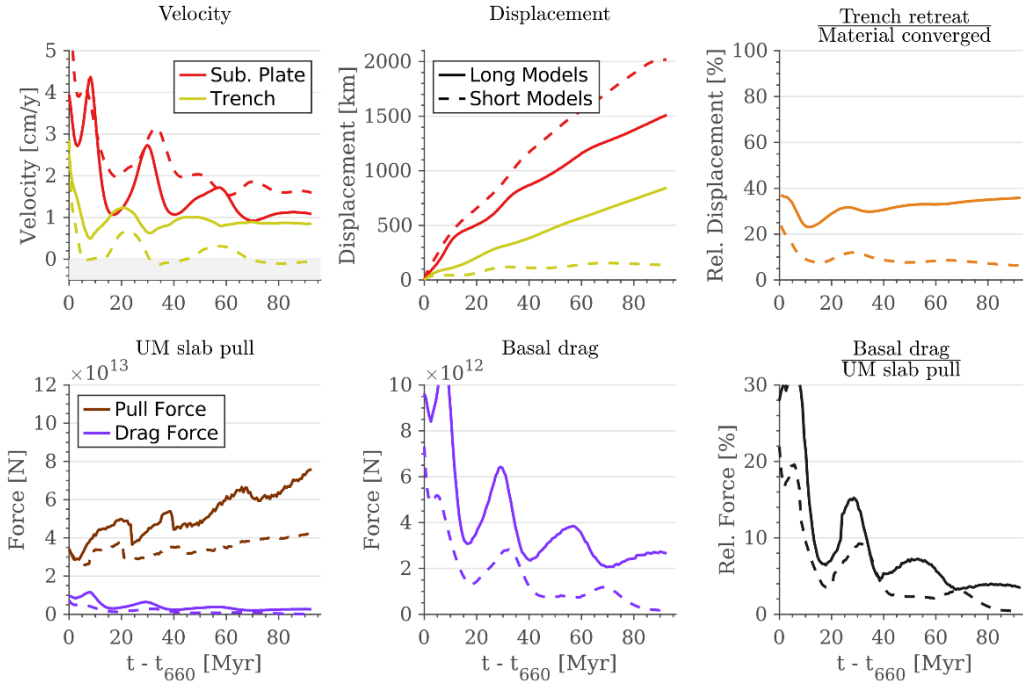
Weak asthenosphere



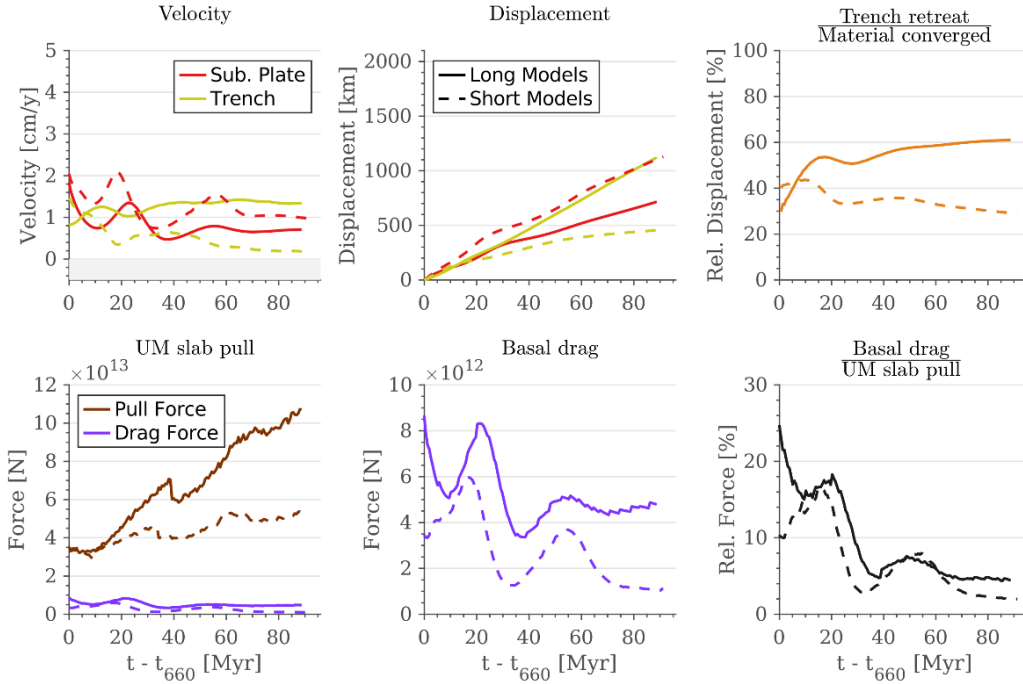
Strong lithosphere (factor 2)



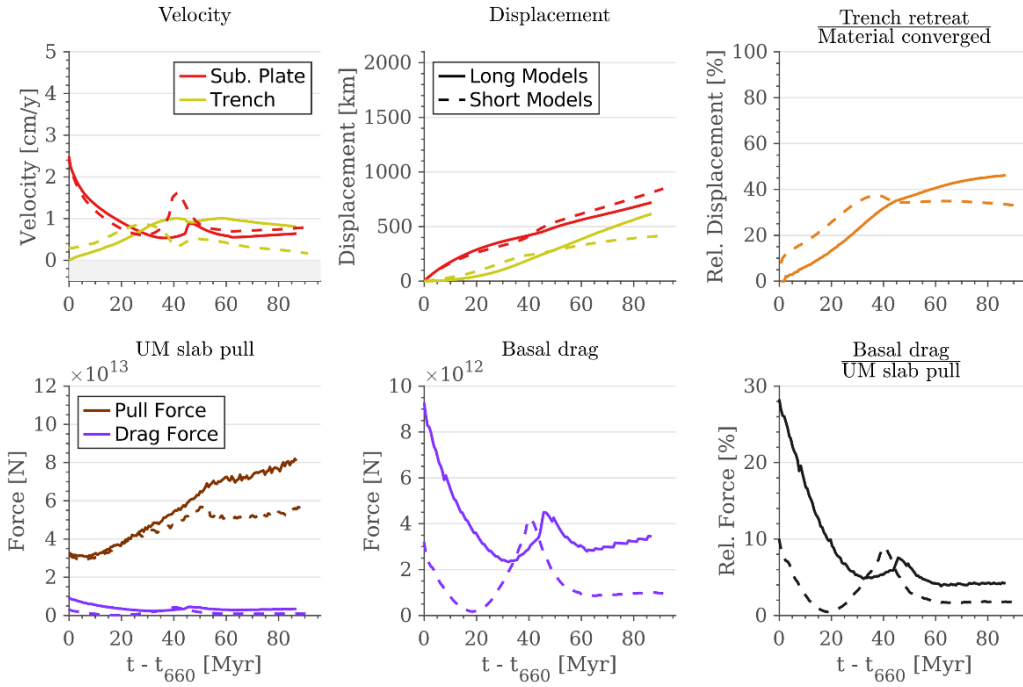
Weak asthenosphere



Strong lithosphere (factor 2)



Strong lithosphere (factor 10)



Combined weak asthenosphere and strong lithosphere (factor 2)

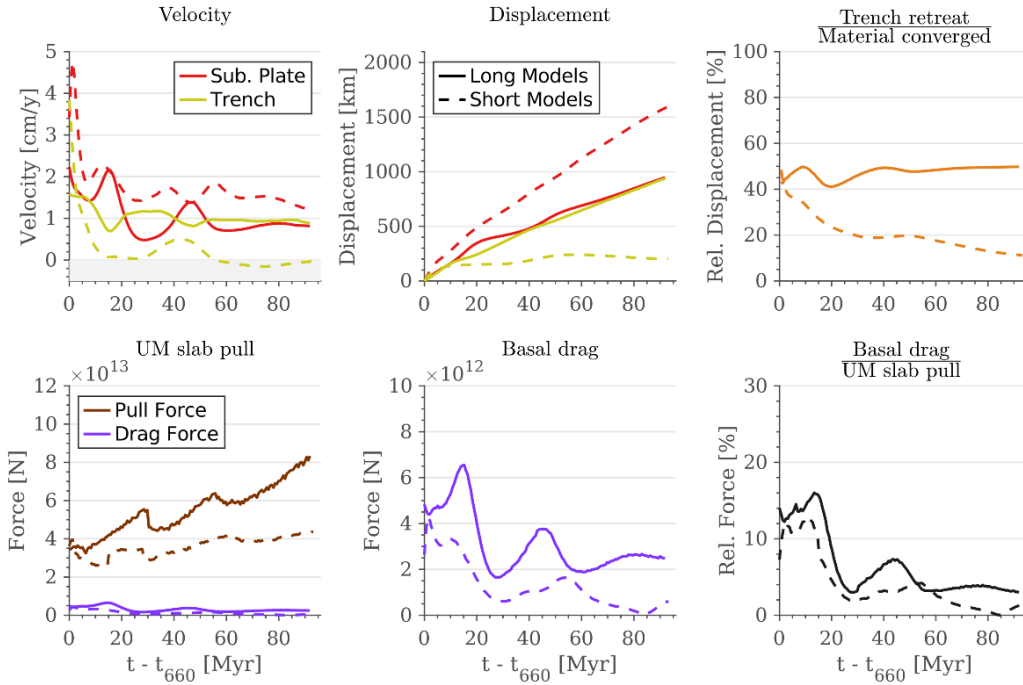
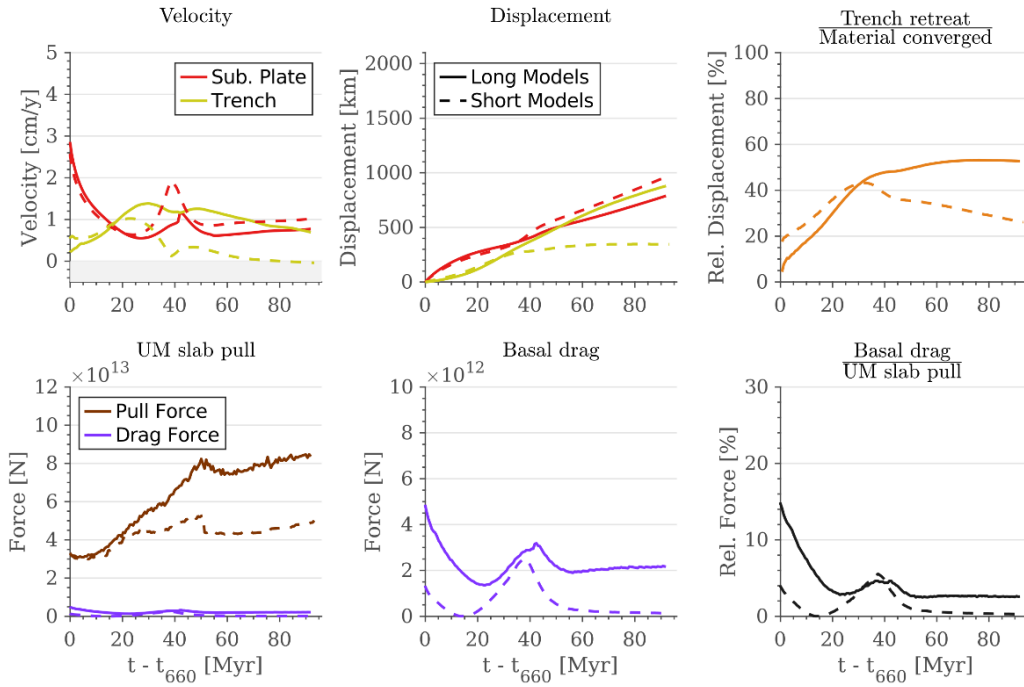


Figure S2-2 (continued)

Combined weak asthenosphere and strong lithosphere (factor 10)



Self consistent rheology

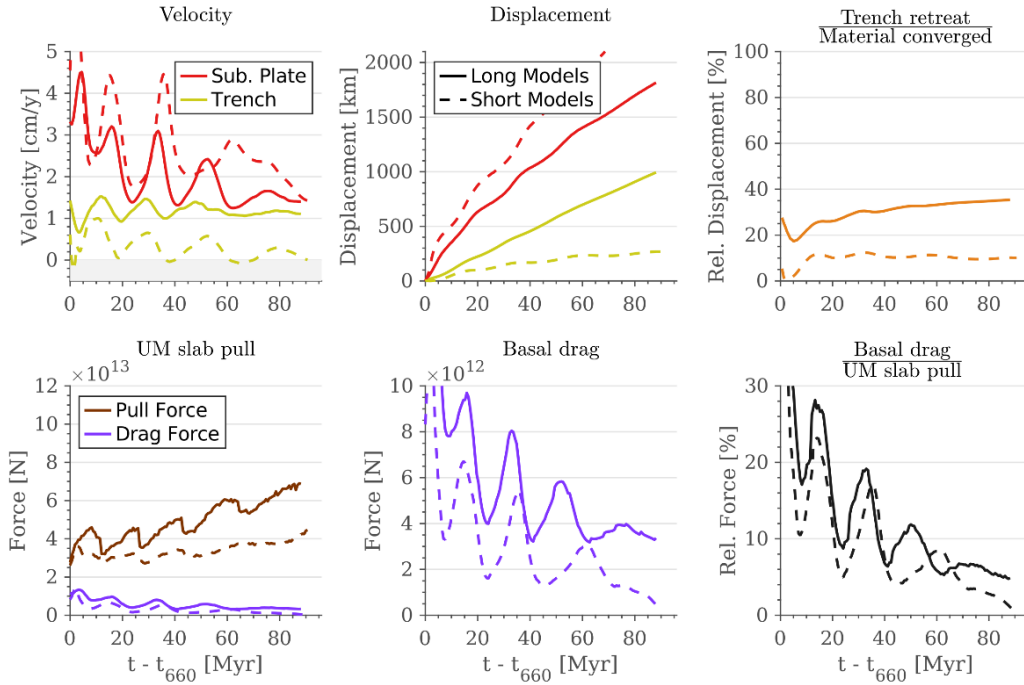


Figure B2 (continueS2-2 (continued))

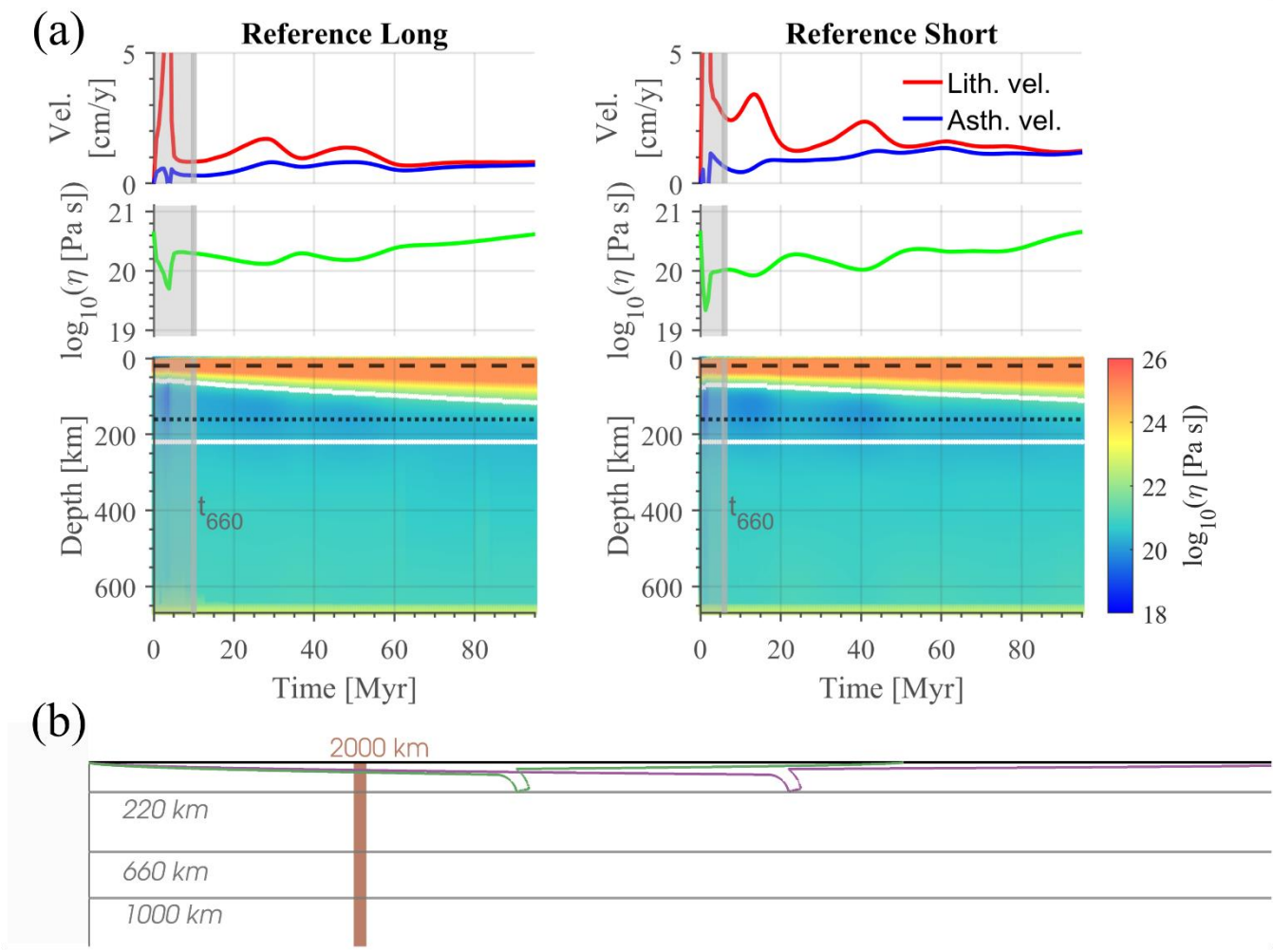
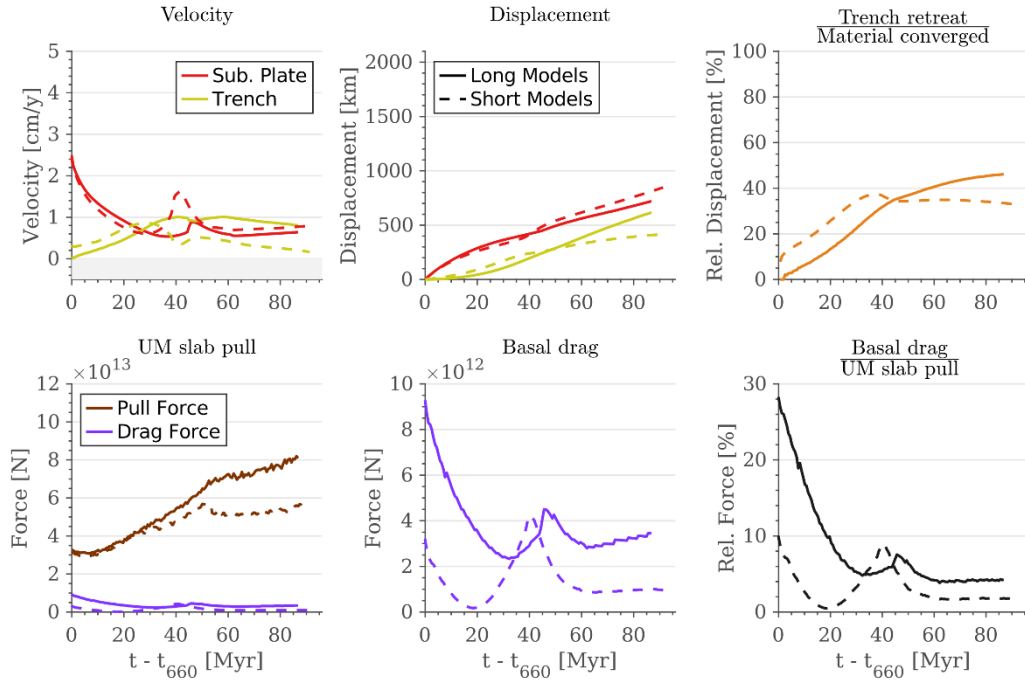


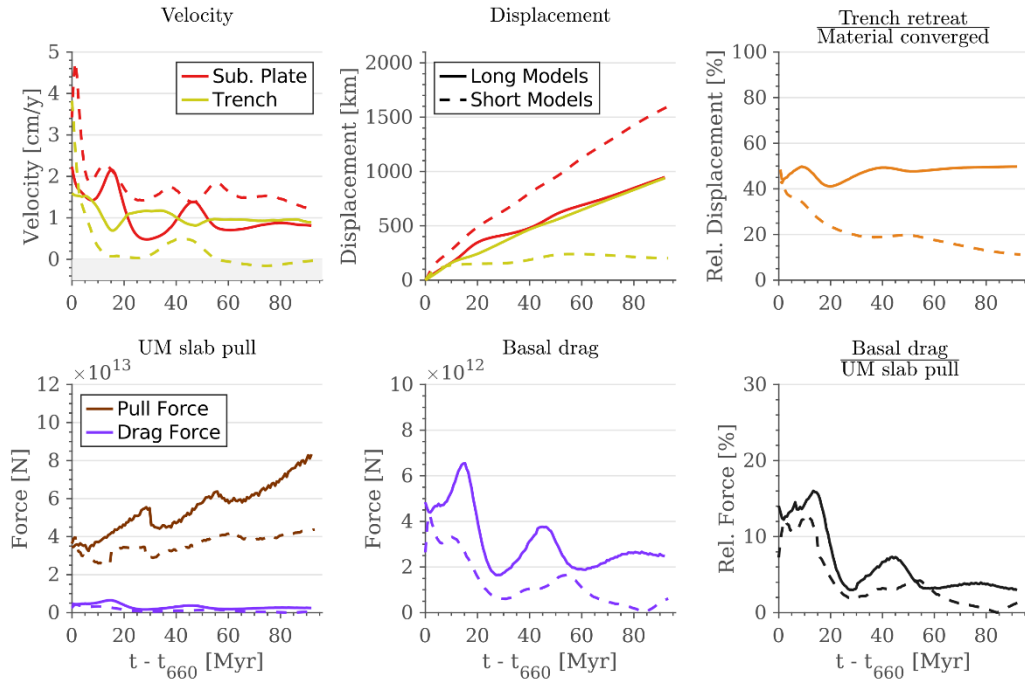
Figure S2-3 (a) Temporal evolution of parameters used for the calculation of basal drag (see main text for further details), for the long-plate reference model (left panels) and short-plate reference model (right panels). Top panel shows the velocities of the lithosphere (red line) and asthenosphere (blue line) (measured along the dashed and dotted lines in the bottom panel, respectively). Middle panel shows the magnitude of the viscosity of the asthenosphere (green line, measured along the dotted line in the bottom panel). Bottom panel shows a vertical profile (0-660 km depth) of the magnitude of the viscosity field. White lines mark the base of the lithosphere (1100°C isotherm) and asthenosphere (constant depth of 220 km). Parameters for the lithosphere were measured at 20 km depth (black dashed line) and parameters for the asthenosphere at 160 km depth (black dotted line). Time before the initial interaction of the slab with the ULMB, t_{660} , is not shown in Fig. 4, 6 and 2.2 and shaded in this figure. (b) Location of the vertical profile location along which the quantities in (a) are measured (brown line).

marked on an outline of the lithosphere at the initial condition of the long-plate reference model (magenta line) and the short-plate reference model (green line). The vertical and horizontal spatial scales are identical and only part of the full model

Strong lithosphere (factor 10)



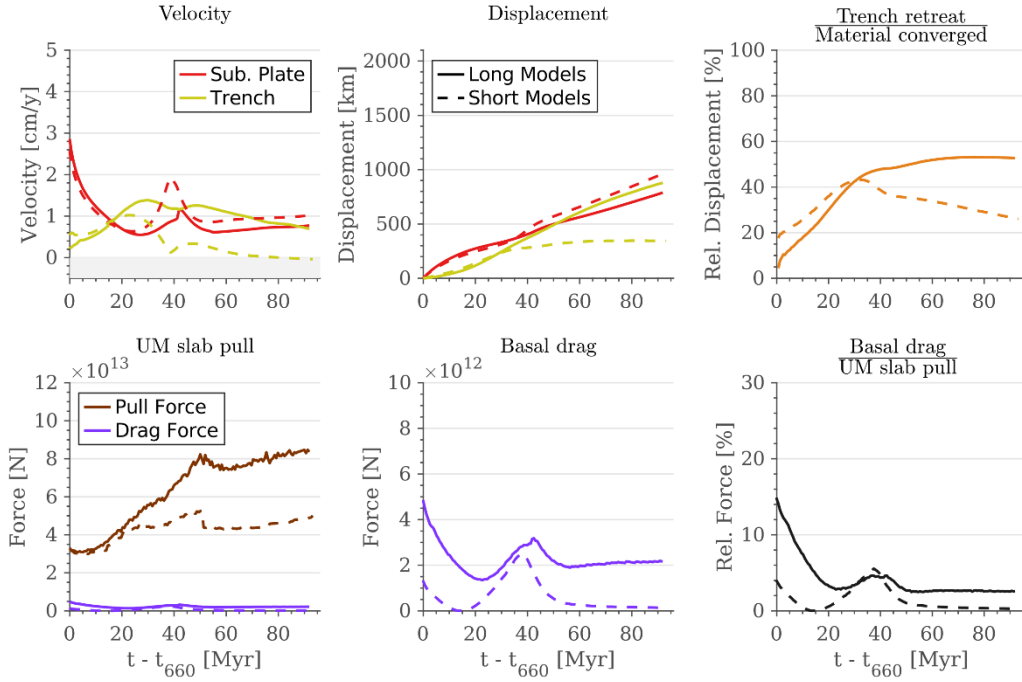
Combined weak asthenosphere and strong lithosphere (factor 2)



110 domain is shown.

Figure B2 (continue)

Combined weak asthenosphere and strong lithosphere (factor 10)



Self consistent rheology

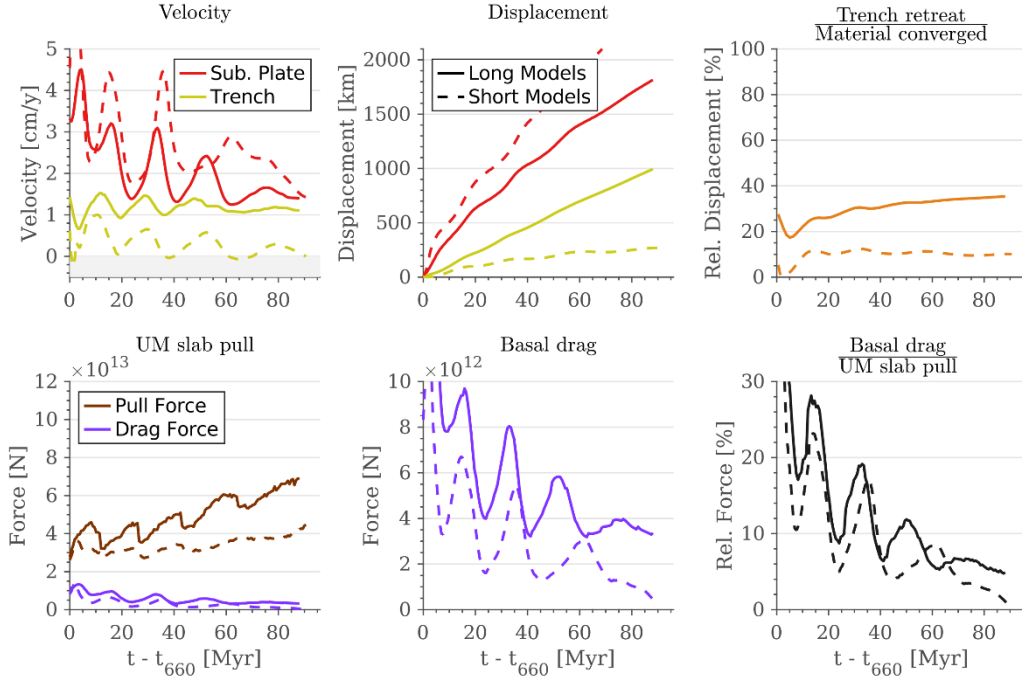


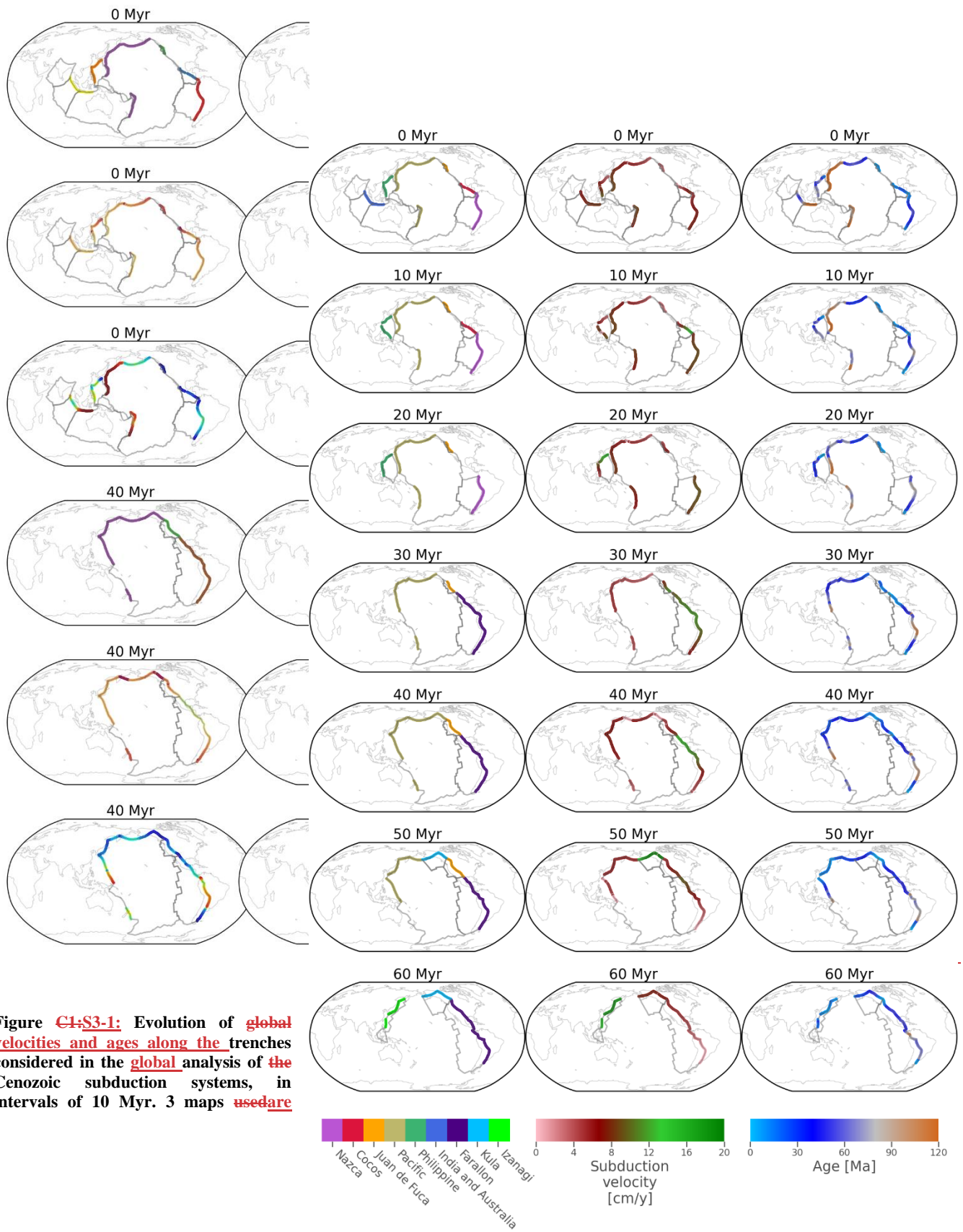
Figure B2 (continue)

S3. Cenozoic subduction zone parameters

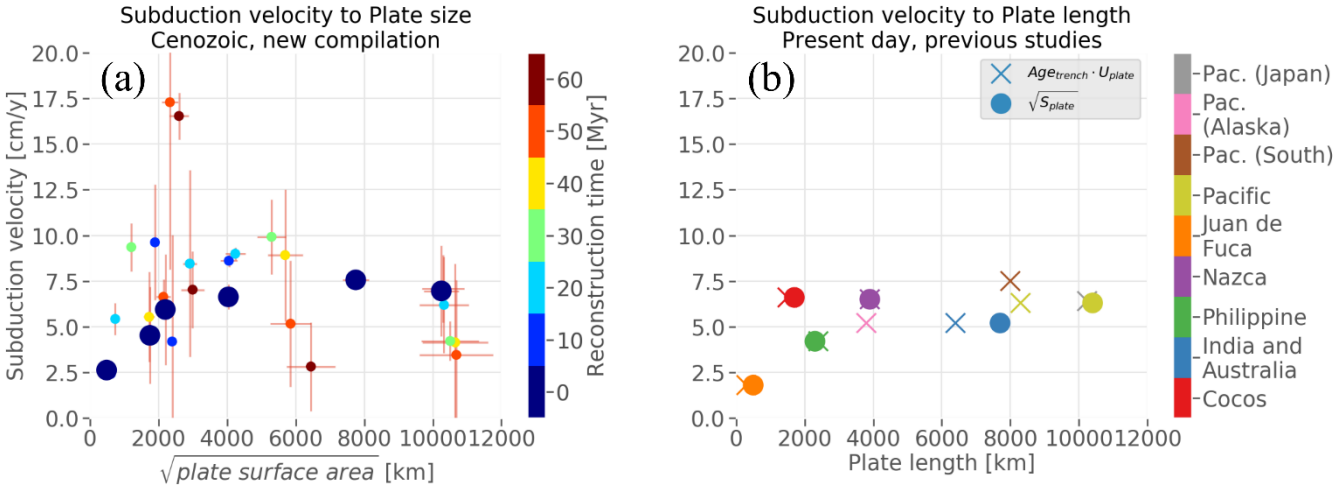
We used GPlates (Müller et al., 2018) with the plate reconstruction of Müller et al. (2016) to make an updated compilation of the average velocities, average age at the trench and size of the subducting plates for major subduction zones through the Cenozoic (0-60 Ma). This was done for all trenches previously studied by Sdrolias and Müller (2006) who considered the Andean subduction zone, Central-North Farallon subduction systems, subduction below Alaska and the Aleutians, subduction below Japan-Kuriles-Kamchatka, subduction below Izu-Bonin-Marianas, below Tonga-Kermadec and below the Sunda-Banda arc. To these we added the subduction of the Philippine Sea plate and the final stages of the subduction of the Izanagi and Kula plates. In processing this database, we considered all the Pacific subduction systems (i.e. Alaska-Aleutians, Japan-Kuriles-Kamchatka, Izu-Bonin-Marianas and Tonga-Kermadec) as a single Pacific system.

The relevant trenches were identified by extracting the global subducted segments of all plate polygons in GPlates. All trenches were sampled at 50 km intervals, and the coordinates were ~~outputted~~output and then plotted to select those belonging to the major subducting plate systems listed above. For each selected system, age and velocities along the trench were plotted every 10 Myr to check that all data made sense, and to remove edge points where these were clearly anomalous from the rest of the trench (e.g. because of an anomalous age or convergence direction). We evaluated the point velocity of the subducting plate, of the overriding plate as well as convergence velocity and direction to select the segments to analyse. Maps showing the trench segments included in our analysis at each stage can be found in Fig. ~~C4S3-1~~S3-1, where the sampling points along the trenches are also coloured according to the subducting plate absolute velocity (in the moving hotspot reference frame of O'Neill et al., ~~2005~~ 2005) and age. These maps illustrate the evolving set of subduction systems through the Cenozoic as well as the variability of age and velocity along each trench. Aside from some edge points, we excluded from our analysis the part of the South American trench at 40 and 50 Myr which was south of the Antarctic ridge and the Cocos subduction system at 20 Ma, because according to the plate motion model there is limited convergence along most of the trench at this time. Finally, we considered for our analysis the mean value of the velocities and trench age for each subducting system, and the standard variation of the mean value as the uncertainty.

There is ~~quite~~ some variation of both velocity and age along each trench, and each trench has a unique tectonic evolution. Nonetheless, the lack of a trend between velocity and size and the overall correlation between size and age are general features of the Cenozoic set of subduction zones, not dependent on including or excluding one or the other system, or on ~~somewhat~~ different definitions of each system, or on ~~with whether~~consideration of the total subducting plate velocity or only the normal component of velocity ~~is used~~.



shown for each time interval, showingdisplaying the trenches used for the analysis (topleft), absolute subducting plate velocity in hotspot reference frame (O'Neill et al., 2005; middle) and age at the trench (bottomright). Grey lines represent other boundaries of the subducting plates. The background light grey representsshows present day global coastlines for reference. Data is based on Müller et al. (2016) and processed using GPlates and Cartopy (Met Office, 2015; Müller et al., 2018).



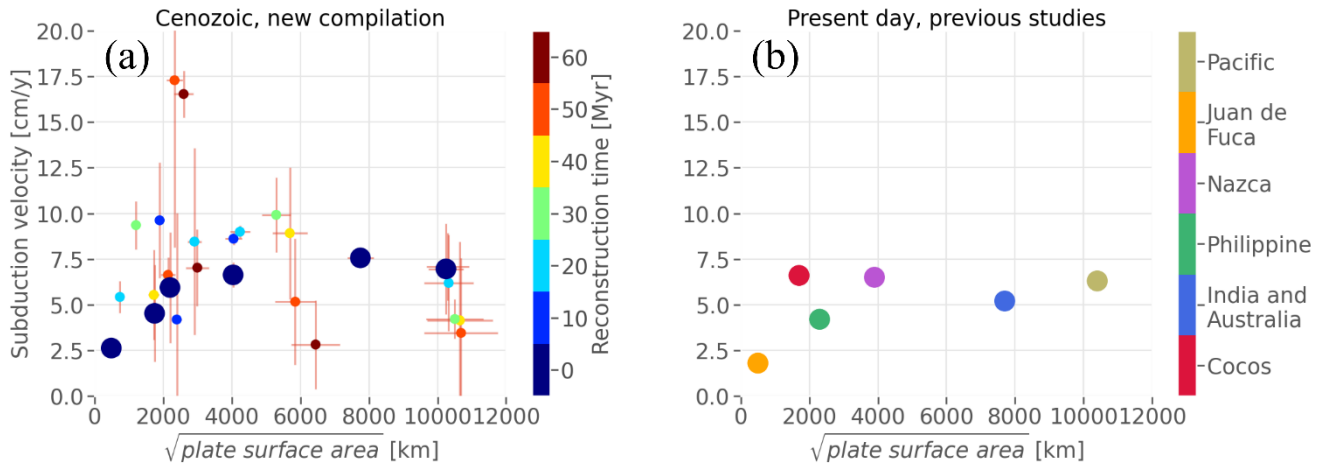


Figure C2:S3-2: Velocity of subducting plates as a function of plate size. Plate size as typical length throughout the Cenozoic (a) and at present day (b). Circles represent lengths calculated as the square root of the surface area of the plate and X markers indicate length as a multiplication of subduction velocity and trench age. Bold markers indicate present day values. (a) Cenozoic dataset is based on plate reconstruction from Müller et al. (2016) and analysed using GPlates (Müller et al., 2018). Large markers indicate present day values from this reconstruction. (b) Present day data velocities from Conrad and Hager (1999), Schellart et al. (2007) and Sdrolias and Müller (2006). Velocities, as a function of plate size from Conrad and Hager (1999), same as shown in Fig. 1. All velocities are calculated in lower mantle (plume) reference frame (O'Neill et al., 2005). Further details in Fig. 8 and in the main text.

References

Fowler, C. (2005), The Solid Earth: An Introduction to Global Geophysics, Cambridge Univ. Press, Cambridge, U. K.

Met Office: Cartopy: a cartographic python library with a Matplotlib interface, [online] Available from: <https://scitools.org.uk/cartopy>, 2015.

Müller, R. D., Seton, M., Zahirovic, S., Williams, S. E., Matthews, K. J., Wright, N. M., Shephard, G. E., Maloney, K. T., Barnett-Moore, N., Hosseinpour, M., Bower, D. J. and Cannon, J.: Ocean Basin Evolution and Global-Scale Plate Reorganization Events Since Pangea Breakup, *Annu. Rev. Earth Planet. Sci.*, 44(1), 107–138, doi: 10.1146/annurev-earth-060115-012211, 2016.

Müller, R. D., Cannon, J., Qin, X., Watson, R. J., Gurnis, M., Williams, S., Pfaffelmoser, T., Seton, M., Russell, S. H. J. and Zahirovic, S.: GPlates: Building a Virtual Earth Through Deep Time, *Geochemistry, Geophys. Geosystems*, 19(7), 2243–2261, doi: 10.1029/2018GC007584, 2018.

O'Neill, C., Müller, D. and Steinberger, B.: On the uncertainties in hot spot reconstructions and the significance of moving hot spot reference frames, *Geochemistry, Geophys. Geosystems*, 6(4), doi: 10.1029/2004GC000784, 2005.

Schellart, W. P., Freeman, J., Stegman, D. R., Moresi, L. and May, D.: Evolution and diversity of subduction zones controlled by slab width, *Nature*, 446(7133), 308–311, doi: 10.1038/nature05615, 2007.

Sdrolias, M. and Müller, R. D.: Controls on back-arc basin formation, *Geochemistry, Geophys. Geosystems*, 7(4), doi: 10.1029/2005GC001090, 2006.

185 Turcotte, D. L. and Schubert, G.: *Geodynamics*, 2nd ed., Cambridge University Press, Cambridge. ~~[online] Available from:~~
~~<http://dx.doi.org/doi:10.1017/CBO9780511807442>~~ ~~(Accessed 16 June 2015)~~, 2002.