

	Saeid Sadeghnejad:	Authors' reply:
1.	The paper's Appendix comparing micro-CT, BSE, and EDX should be merged into the main text. Fig A provides a clear insight into the "problem definition" of the paper. The readers should wait until reading this Appendix and see this figure to understand why Illites are not visible in micro-CT images.	As suggested by Mr. Sadeghnejad, we inserted the images into the manuscript text section (Figure 2,5). This improves the comprehensibility of the manuscript, clarifies the motivation, and illustrates why we had to model illites into μ XCT structures to obtain the true rock permeability.
2.	Authors considered a 2-voxel pore layer next to solid surfaces as pore locations for illites in the primary simulation model. The reason for selecting this value was not discussed in the paper. Also, the methodology used in Eq. 7 requires more detailed explanations.	We updated the description of the decision why we chose a 2-voxel layer of illites and included it into the text. We updated the description of the method in line 213-216. Furthermore, we updated the text from line 221-224. We changed fig. 6 and the figure description to improve the comprehensibility of the method.
3.	However, the discussion of the same effect on the porosity of the system is missing.	With a focus on the permeability impact of clay minerals, this work shows that only a minor alteration of the pore throat morphology can be accompanied by a strong reduction of permeability in tight reservoir rocks. Assuming porous voxels, the porosity does not change significantly by applying the methodology. It is our intention to emphasize that the well-known relationship between porosity and permeability changes with a disconnection of the pore throats (e.g. Leu et al., 2014). The impact on permeability of this effect increases with decreasing permeability of the considered rock.
	Anonymous referee #1:	
1.	Line 40-41, in the Introduction section, the following references (Liu and Mostaghimi 2018; Liu et al. 2020) can't be ignored to discuss the recent advances in the pore-scale studies below μ XCT resolution. Liu, M., & Mostaghimi, P. (2018). Reactive transport modelling in dual porosity media. Chemical Engineering Science, 190, 436-442. Liu, M., Starchenko, V., Anovitz, L. M., & Stack, A. G. (2020). Grain detachment and transport clogging during mineral dissolution in carbonate rocks with	We appreciate your comment and added the suggested references to line 40-42.

	CISED Interactive comment Printer-friendly version Discussion paper permeable grain boundaries. <i>Geochimica et Cosmochimica Acta</i> , 280, 202-220.	
2.	Line 87, “The term...”, this sentence seems have different font style with the context. Please check it through the paper.	We checked for different font styles and corrected it throughout the manuscript.
3.	Line 89, reference is needed for the definition of “nanoporous”.	We added a description for the term “nanoporous” from line 88-90 (e.g. Tinetti et al. 2020).
4.	Line 208, can the authors provide the values of the parameters used in Equation (1)?	Since line 208 does not contain information about the equation, we think you might have meant line 108. We added a section about the physical parameters which were used for the gas permeameter test (line 244-254). These include values of the applied differential pressure and size of the samples. Furthermore, we added an example for the applied pressures for sample F8 (Table 1).
5.	Scale bar is missing for Figure 2.	In Figure 3 (former Figure 2), there is a scale bar in the bottom left corner of the figure.
6.	Line 175, I think there should be more introduction about the machine learning method used in Figure 3.	<i>Ilastik</i> uses a Random Forest algorithm to provide different trees for the classification of the voxels/pixels. This is used to achieve a segmentation based on not only greyscale values, but shape as well. We added a section about the machine learning method from line 185-191.
	Anonymous referee #2:	
1.	Line 104, list the brand, type and accuracy of the differential pressure transducer.	We listed the brand, type and accuracy of the equipment we have used from line 108-111.
2.	Line 111, MIP should be replaced by MICP.	We replaced the term “MIP” by “MICP” throughout the text.
3.	Line 128, add more details of the machine learning segmentation used in this study	Following the referees’ suggestion, we added a section about the machine learning (line 185-191). We explain how the algorithm classifies pixel/voxel using the random forest classifier.
4.	Line 156, how did the authors calculate the error bound?	The error bound is one of the mandatory settings for the solver. Since every calculated permeability is a result of an iterative differential equation process, the “true” value for permeability can only be approximated. A low error bound value of

		0.05 often requires a simulation time of days to reach the specified stopping criterion. We added a description in the manuscript from line 164-167.
5.	Line 258, modify the absolute permeability format.	We changed the format of the permeability to mD.
6.	The unit of the permeability should be consistent for the whole paper	We made sure that the permeability format is consistent in the manuscript.
7.	Additional question: Is this method applicable for shale?	Thank you for asking. Since the structure of shales is very different compared to sandstones, the method might be applicable depending on the pore throat characteristics. In shales, the dominating pore structure can be either fractured or porous while organic matter may play a role too (Tiwari et al. 2013, Grathoff et al. 2016). That is why an investigation of the method using mudrocks might be the most natural next step to climb. In the porous case, the method might be applicable when the pores are large enough while in the other cases the modelled clay mineral content might have no or only a minor effect on the permeability calculations. Further studies are necessary to gain knowledge about the effect of clay modelling on permeability in shales when our method should be applied. Of course, this is a very promising topic, and the method should be benchmarked on these structures as well. We added two sentences about the possible applicability in other types of rocks from line 351-354.

	Further changes in the manuscript
1.	We changed the sentence about Darcy's law in line 150 since the meaning was misleading.
2.	We added a sentence about the validity of the flow field variances in line 318-319.
3.	We added new references which emphasize important aspects of the manuscript.

Authors' reply to the editor:

The authors want to thank the editor for the effort he spent evaluating our manuscript. We addressed the comments and statements of the editor in our manuscript (highlighted in green).

Dear Authors,

I have now had time to evaluate the reviews and read your manuscript in detail, apologies for the slight delay.

This is a very interesting, well-written and well-illustrated paper, and I look forward to seeing it published in SE. Before I will recommend it for publication and in order to ensure the reproducibility of your work, I would ask you to provide the numerical details of your segmentation choices - that is, for the uCT data, the threshold values and the bit depth of your data as well as details on the reconstruction algorithm you used. Given that the ML segmentation hinges on the training of the classifier, I would ask to make the classifier file you used for segmentation available as supplementary material. In order to evaluate the influence of phase contrast on your synchrotron data, it would be important that you provided the sample-detector distance.

Please also have a look at the attached, annotated pdf.

With kind regards,

Florian Fusseis

Non-public comments to the Author:

W/ regards to the references that referee #1 requests, please only include these if they are essential.

Authors' reply:

	Changes in the manuscript
1.	As suggested by the editor, we corrected line 32, 40, 54, 70-71, 81-82, 219, 220, 288, 322.
2.	We added a section about the synchrotron-based μ XCT scanning and provided additional information about thresholding values, sample-detector distance and the datatype of the images (127-139). We used one machine learning method for the qualitative comparison with conventional thresholding. We clarified this in the manuscript.
3.	We provided the .ilp file which includes all information about the classifier. This file may be opened with a .h5 compatible program (MATLAB). To gain access with MATLAB, the command would be: <code>hinfo = hdf5info('filename')</code>

	An exemplary .tif file of a slice of the illite meshwork which can be opened along with the .ilp file was attached as well. The slice illustrated in Fig. 4 was used for this purpose (Step C to D).
4.	We included the references provided by referee #1 since they helped to clarify our statements about combining FIB-SEM with μ XCT.

Simulating permeability reduction by clay mineral nanopores in a tight sandstone by combining μ XCT and FIB-SEM imaging

Arne Jacob¹, Markus Peltz², Sina Hale³, Frieder Enzmann¹, Olga Moravcova¹, Laurence N. Warr², Georg Grathoff², Philipp Blum³ and Michael Kersten¹

5

¹Geosciences Institute, Johannes Gutenberg-University, J.-J. Becherweg 21, 55099 Mainz, Germany

²Institute of Geography and Geology, University Greifswald, Friedrich-Ludwig-Jahn-Str. 17a, 17487 Greifswald, Germany

³Institute of Applied Geosciences (AGW), Karlsruhe Institute of Technology (KIT), Kaiserstraße 12, 76131 Karlsruhe, Germany

10 *Correspondence to:* Arne Jacob (a.jacob@uni-mainz.de)

Abstract

Computer microtomography (μ XCT) represents a powerful tool for investigating the physical properties of porous rocks. While calculated porosities determined by this method typically match experimental measurements, computed permeabilities are often overestimated by more than one order of magnitude. This effect increases towards smaller pore sizes, as shown in
15 this study, in which nanostructural features related to clay minerals reduce the permeability of tight reservoir sandstone samples. FIB-SEM tomography was applied to determine the permeability effects of illites at the nanometre scale and Navier-Stokes-equations were applied to calculate the permeability of these domains. With this data, microporous domains (porous voxels) were defined using microtomography images of a tight reservoir sample. The distribution of these domains could be extrapolated by calibration against size distributions measured in FIB-SEM images. For this, we assumed a mean permeability
20 for the dominant clay mineral (illite) in the rock and assigned it to the microporous domains within the structure. The results prove the applicability of our novel approach by combining FIB-SEM with X-ray tomographic rock core scans to achieve a good correspondence between measured and simulated permeabilities. This methodology results in a more accurate representation of reservoir rock permeability in comparison to that estimated purely based on μ XCT images.

1 Introduction

25 Depositional environment and subsequent diagenetic alterations are two key factors that influence the bulk mineralogical composition and the authigenic clay mineral inventory of a reservoir (Wilson and Pittman, 1977; Worden and Morad, 1999), and therefore the fluid flow properties of the porous rock. A well-established technique to image and analyse rapidly the 3D

physical properties of porous rocks is computer X-ray microtomography (μ XCT) combined with the concept of Digital Rock Physics (Andrä et al. 2013a, 2013b; Okabe and Blunt, 2004). By applying monochromatic synchrotron radiation, it is possible to overcome conventional μ XCT artefacts like beam hardening and problems that arise due to limited phase contrast, lack in resolution and edge preservation, as well as low signal-to-noise ratios (Brunke et al. 2008; Kling et al. 2018; Lindquist et al. 2000; Mayo et al. 2015; Spanne et al. 1994). Synchrotron based μ XCT scans with image resolutions in the order of 1 μ m can provide a sound basis for flow and transport modelling of tight sandstones as suggested by Peng et al. (2014). They found that synchrotron μ XCT imaging is necessary for tight sandstones when the connectivity of the pore space is low and pore throats cannot be resolved using a conventional μ XCT scanner. They further concluded that a high abundance of the smallest resolvable pores falsifies modelled permeabilities due to an overestimation of actual pore sizes. Several studies have shown sub-micrometre pore structures to be a frequent feature of tight reservoir rocks (Jiang, 2012; Shah et al. 2016; Soulaïne et al. 2016). Most of these nanostructures are related to different types of clay minerals; most commonly illite, kaolinite, chlorite and smectite (e.g. Wilson and Pittman, 1977, Worden and Morad, 1999, Desbois et al. 2016).

Although known for years, considering such structural features below μ XCT resolution in pore-scale models remains challenging (Alyafei et al. 2015; Guan et al. 2019; Liu & Mostaghimi 2018; Liu et al. 2020; Menke et al. 2019; Peng et al. 2012). Soulaïne et al. (2016) systematically analysed the effect of sub-resolution domains with varying permeabilities on the simulated permeabilities of Berea sandstone (20 vol.-% porosity, 2 vol.-% sub-resolution domains) and found that calculated permeabilities can be reduced by up to 50 %, if microporous domain permeabilities converge towards zero. Thus, it is evident that neglecting sub-resolution information can lead to a significant overestimation of rock permeability in such simulations (e.g. Saxena et al. 2018, 2017). Menke et al. (2019) utilized a multi-scale Brinkman area approach applying different permeabilities for each microporous domain to simulate flow in mono-mineralic carbonate rock. They showed that Stokes-Brinkman models are in good agreement with experimental data whereas Stokes and/or Navier-Stokes models alone were not able to predict permeability in a conventional flow scenario. They also demonstrated that for pure carbonates, a direct correlation can be established between observed density contrasts and specific physical properties, such as porosity and permeability. However, this approach is not applicable in a system with more than one rock forming mineral, such as a tight sandstone, where density contrasts relate to different mineral phases as well as sub-resolution porosities.

The lack of distinct material information for a voxel is often ascribed to as the *partial volume effect* (e.g. Kessler et al. 1984; Ketcham and Carlson, 2001). To overcome the impact of this effect on physical properties of a rock, imaging techniques that
55 can resolve the pore structure at different length scales have to be applied. For estimating the permeability of reservoir rocks, the resolution achieved by synchrotron radiation imaging lies within an acceptable range (Saxena et al. 2018). Several studies have demonstrated that, by combining X-ray and scanning electron imaging, the pore space of tight clay-bearing rocks can be spatially resolved from the mm- down to the nm-scale (e.g. Desbois et al. 2016; Hemes et al. 2015; Markussen et al. 2019). In this study, we aim to demonstrate a new approach by combining synchrotron-based μ XCT imaging with focussed-ion-beam
60 scanning electron microscopy (FIB-SEM) to improve flow simulations in a tight sandstone formation with high clay mineral content. First, we used machine learning-based image segmentation to enhance pore space segmentations of artefact rich FIB-SEM topologies. Then, we conducted Navier-Stokes simulations on FIB-SEM topologies. Finally, we subsequently used these simulations as input data for sub-resolution domains in μ XCT based Stokes-Brinkman models (Brinkman, 1949; Neale and Nader, 1974). This novel morphology-based approach for sub-resolution-rich materials results in simulated permeabilities that
65 fit experimental results significantly better than using Navier-Stokes simulations alone.

2 Sample preparation and characterization

In this study, a well-characterized illite-bearing Upper Rotliegend sandstone from Germany was used, which was sampled from the quarry Schwentesius near the Bebertal village (Heidsiek et al. 2020). This well-known location exposes an analogue of the Permian gas reservoir sandstone of the Flechtingen High, which formed part of the North German Basin. Thin section

analyses of this reservoir rock have shown that illite is the main clay mineral, which primarily occurs as a coating along detrital grains, illite meshworks grown on coatings, diagenetically altered K-feldspar and illitized lithoclasts (Fischer et al. 2012).

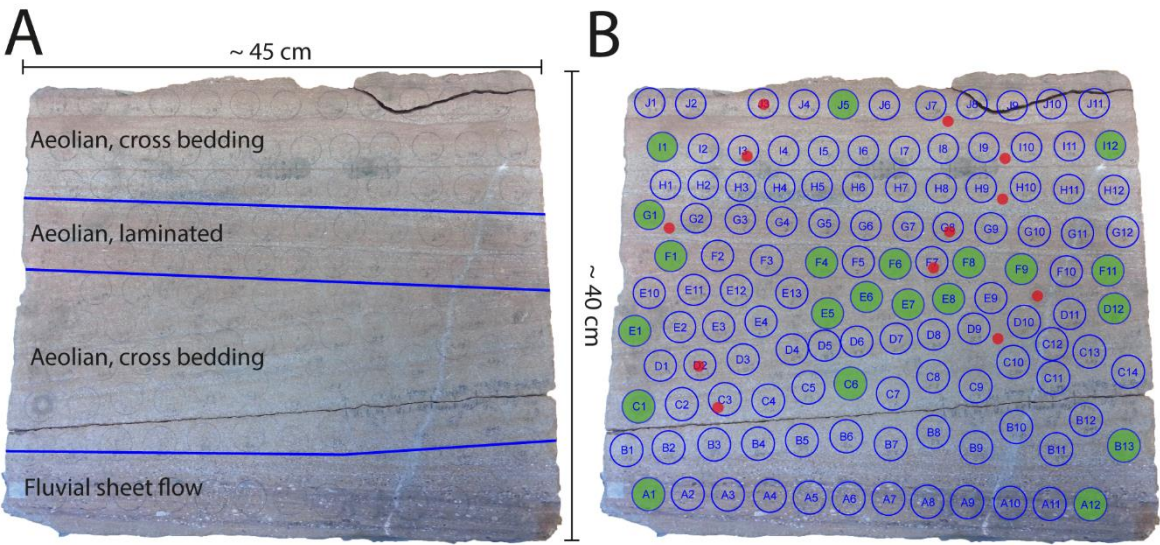


Figure 1 (A) Upper Rotliegend sandstone block showing four main deposition facies. (B) Sampling locations and sizes of the extracted plugs (green) and the mini plugs (red) extracted.

Samples were taken from a large sandstone block displaying a variety of different aeolian and fluvial depositional facies (Fig. 1A). We identified several facies denoted A to J from four different types of sedimentary depositional layers. The samples of the different facies were numbered from left to right. Samples were drilled out and extracted from marked locations in the form of plugs with a diameter of 2.5 cm. The plugs were cut into three segments which were used for X-ray diffraction analyses, helium porosimetry measurements and FIB-SEM imaging. Mini plugs were drilled directly beside the plugs with a diameter of 3 mm and a length between 10 and 20 mm. The larger plugs were used for mineralogical/geochemical analysis, and to measure permeabilities experimentally. The mini plugs were scanned at the synchrotron radiation-based μ XCT imaging beamline P05 at the PETRA of DESY Hamburg (Germany). After the synchrotron measuring campaign, the mini plugs were additionally examined by FIB-SEM and Energy Dispersive X-ray Spectroscopy (EDX) imaging to obtain qualitative and quantitative information about the clay mineral particles found within the rock pore space. Microporous structures in the Rotliegend sandstone sample could be resolved by comparing μ XCT and FIB-SEM images. The term “microporous” refers to the definition of sub micrometre porosity by Soullaine et al. (2016), who differentiated between void, solid, and microporous

voxels in μ XCT images. According to for example Tinetti et al. (2020), the term “nanoporous” is used to describe structures with predominant pore sizes in the nanometre range (0.2 – 1000 nm). In this range, the clay minerals often appear as a greyish pore-filling phase in μ XCT images.

90 **3 Analytical procedures**

3.1 Mineralogical characterization

X-ray diffraction analyses using the Rietveld analysis program Profex 4.0 (Doebelin and Kleeberg, 2015; Ufer et al. 2012) have shown a homogenous mineralogical composition along the layers of the sample block with only slight variations in content (Fig. 2).

X-ray diffraction analysis (XRD)

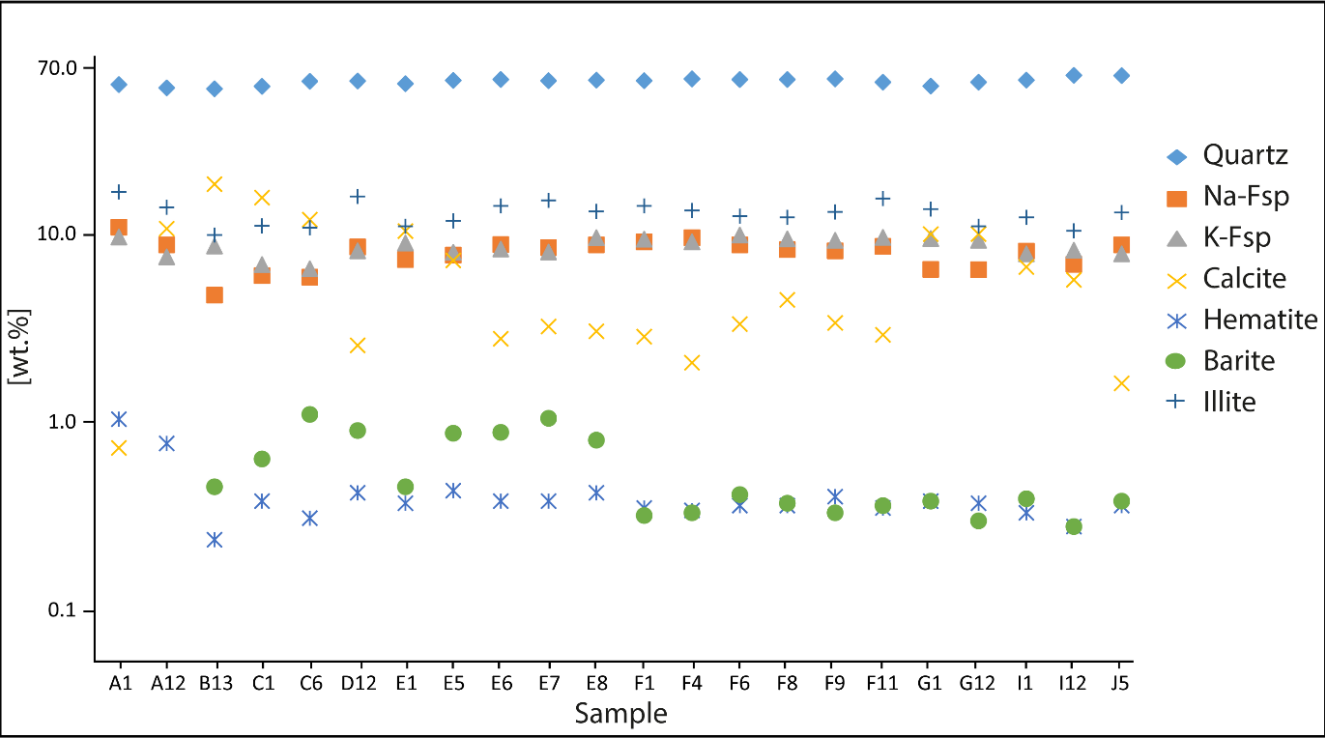


Figure 2 XRD analysis of the main minerals in the plugs based on Rietveld calculations, determined for several samples of facies A to J of the sandstone block.

The main components are quartz (58-69 wt.%), authigenic and diagenetic feldspars (12-20 wt.%), calcite (1-18 wt.%), and illite (10-17 wt.%). In the <0.2 μ m size fraction, we observed traces of swelling smectite interpreted as contaminants from

100 surface weathering. Accessory hematite and barite particles also occur with abundances of <1 wt.-%. In the Bebertal tight sandstone, illite is by far the most abundant clay mineral and makes up ~95 wt.-% of the <2 µm fraction. Commonly, the nanometre-scale microstructural features of reservoir rocks containing significant amounts of clay minerals are usually not detectable at µXCT resolution due to a low absorption contrast (Ahmad et al. 2018).

3.2 Permeability measurements and pore size distribution

105 A helium gas-driven permeameter under steady-state conditions was used to experimentally obtain permeability values for the individual plugs (e.g. Filomena et al. 2014). Compressed air was used to apply a pressure of 10 bar to the core samples that were coated by a latex membrane. A Bronkhorst F-111C-RBB-33-V was used as a flowmeter. It was calibrated by polynomial calibration and has a measuring accuracy of ±0.5 % plus ±0.1 % of the full scale. To measure the differential pressure, an Emerson Rosemount 3051S Ultra was used with an accuracy of ±0,045 %. To control the inflow and outflow, two pressure
110 sensors (Brooks 5866) with an accuracy of ±0.5 % were installed. For permeability measurements, the inflow and outflow pressures of the helium flux were sequentially increased in up to six pressure steps. The differential pressure was kept constant at 200 – 500 mbar depending on the sample properties. The intrinsic sample permeability was derived from the apparent gas permeability, K_g , determined for each pressure step using Darcy's law (Liu et al. 2017):

$$K_g = \frac{2Qp_2\eta L}{A(p_1^2 - p_2^2)} \quad (1)$$

115 where Q is the measured gas flow rate, η is the dynamic viscosity of the permeant, L is the sample length, A is the sample cross-section, and p_1 and p_2 are the inflow and outflow pressures. By plotting K_g against $\frac{1}{(p_1 + p_2)/2}$, the data can be fitted by a straight line. The intercept of the best-fit line at the K_g axis corresponds to the intrinsic sample permeability, K_{int} (Gao and Li, 2016; Klinkenberg, 1941). Also, MICP measurements were conducted with an Autopore IV Series (Micromeritic Instrument Corp.) to determine the pore size distribution of a dried sub-sample with a weight of ~2.5 g, which was taken from a cross-
120 bedded aeolian layer of the sandstone block. Based on the capillary law, MICP enables the analysis of a wide spectrum of pore sizes (3 nm to > 900 µm), corresponding to a pressure range of 0 - 414 MPa. As a non-wetting liquid with a high contact angle (130 - 140°), mercury only penetrates a pore when pressure is applied. Under the assumption of cylindrical pores, the applied pressure is directly proportional to the pore throat diameter as described by the Washburn equation (Washburn, 1921):

$$D = \frac{-4\gamma \cdot \cos \theta}{P} \quad (2)$$

125 where D is pore throat diameter, γ the surface tension, θ the contact angle, and P the applied pressure.

3.3 Synchrotron-based μ XCT

For synchrotron tomography, a beam energy of 29.87 KeV was used while the sample-detector distance was 1.2 cm. The effective image resolution of the detector equipped with a CCD camera was 1.22 μ m per pixel, while the image size was 3056 \times 3056 pixels. We used an advanced reconstruction script described in Moosmann et al (2014) with the MATLAB[®] software and binned the images by a factor of 2 before reconstruction to increase the signal-to-noise ratio. This decreased the voxel resolution to 2.43 μ m and changed the image size to 1528 \times 1528 pixels. The number of projections was 1200, with the information of five subsequent images used to calculate an average for every projection image. After reconstruction of the 3D image stacks, the scans were denoised using the non-local means filter of the *GeoDict 2020* software package (Buades et al. 2011). Image segmentation of the mini plugs was realized by conventional greyscale thresholding. The greyscale values for each phase on a 16-bit intensity range were: 0 - 8550 for pores, 8551 - 12880 for grains, 12881 – 25000 for cements and 25001 – 65535 for high density cements and oxides. Since the best threshold values for each phase varied slightly from sample to sample, these values were adjusted for each segmentation within a small range of ± 50 . A qualitative comparison with machine learning segmentation revealed a better pore-to-solid segmentation and resolving of small pore throats by thresholding (Fig. 3). Since the main goal was to achieve the best possible permeability estimation, the differentiation between pore and solid is more important for permeability estimation than the accurate segmentation into different phases (Khan et al. 2016). Leu et al.

135

140

(2014) point out that even a small variation in pore throat morphology can have a large impact on the estimation of permeability.

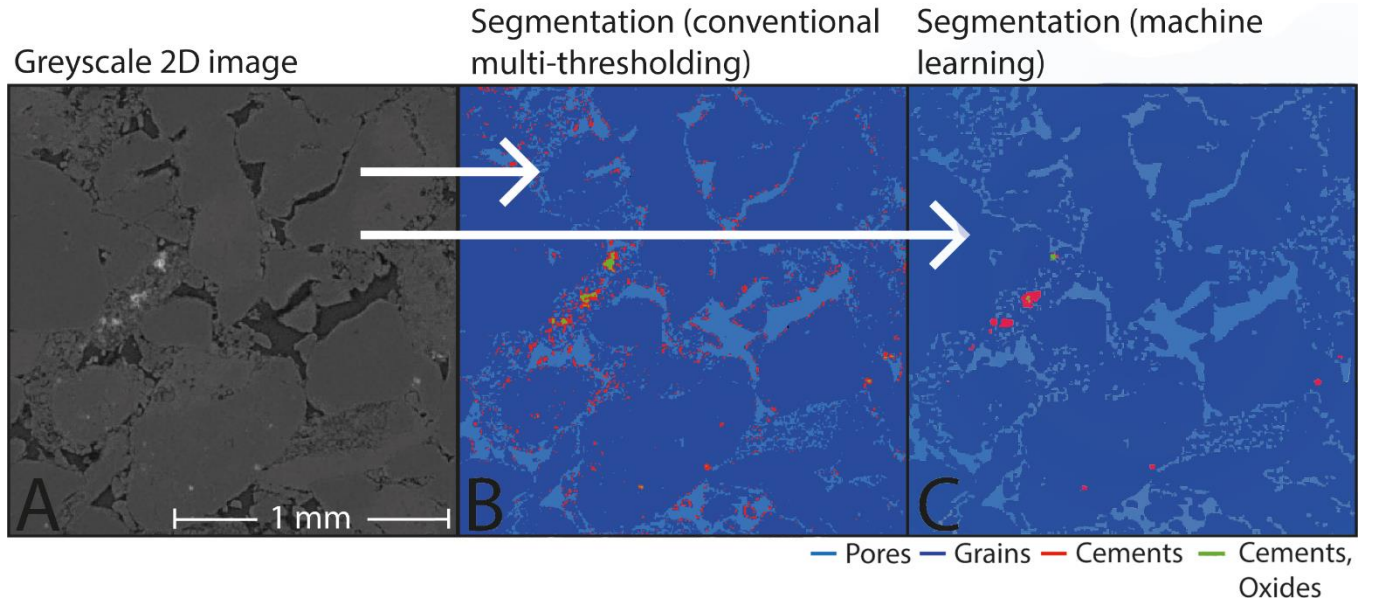


Figure 3 (A) Greyscale 2D μ XCT image of a mini plug. (B) Segmented phases using multi thresholding. (C) Segmented phases using the machine learning image classification module of the software *ilastik* (Version 1.3.3) by Berg et al. (2019).

For permeability simulations, we either used the Fast Fourier Transformation (SIMPLE-FFT) or the Left-Identity-Right (LIR) solvers, both implemented in the *FlowDict* module of the *GeoDict* software package (Linden et al. 2015; Moulinec and Suquet, 1995). While the SIMPLE-FFT solver is fast for calculating low porosity domains, the LIR solver is better suited for high porosity domains and requires less memory. Both iterative finite volume solvers can apply Navier-Stokes and Navier-Stokes-Brinkman equations. Derived from these equations, Darcy's law (Eq. 1) is used to calculate the permeability of a material (Darcy, 1856):

$$\vec{u} = -\frac{K}{\eta}(\nabla p - \vec{f}) \quad (3)$$

In Eq. 3, \vec{u} is the 3-dimensional average fluid-flow velocity, K the permeability, η the fluid viscosity, p the intrinsic average pressure tensor, and f the force density field, which was defined using the Navier-Stokes conservation of momentum equation for all three dimensions (Eq. 4):

$$-\eta \Delta \vec{u} + (\rho \vec{u} \cdot \nabla) \vec{u} + \nabla p = \vec{f} \quad (4)$$

The Brinkman term can be added to the Navier-Stokes equation where porous voxels are required. These voxels include the nanoporous flow resistivity:

$$-\eta \Delta \vec{u} + (\rho \vec{u} \cdot \nabla) \vec{u} + \eta K^{-1} \vec{u} + \nabla p = \vec{f} \quad (5)$$

where K^{-1} is the inverse of the permeability tensor and ηK^{-1} the flow resistivity. The applicability and robustness of combining Navier-Stokes equations with the Brinkman term has been validated by Iliev and Laptev (2004).

We calculated the permeability with symmetric boundary conditions in tangential and flow direction with a pressure drop of 20370 Pa. The symmetric boundary conditions are valid for low porous structures with non-periodic pore throat geometries.

The differential pressure value was set to be able to compare the results with helium permeation flux measurements where similar values have been used. As a convergence stopping criterion, a low error bound of 0.05 was chosen. **The error bound criterion uses the result of previous iteration to predict the final solution by linear and quadratic extrapolation. This stops the iteration when the relative difference regarding the prediction is smaller than 5 %. During this process, the solver recognizes oscillations and local minima or maxima which prevents a premature stopping of the solver during the iteration process.**

3.4 FIB-SEM Measurements

In this study, a Zeiss Auriga crossbeam electron microscope equipped with a Gemini electron column and an Orsay Physics ion beam was used. SEM images were taken at 1 kV with an in-lens secondary electron (SE2) detector, and FIB slicing was executed with a beam current between 0.5 and 2 nA and a voltage of 30 kV. This resulted in a slice thickness of 25 nm. A large FOV of $\sim 20 \mu\text{m}$ could be reached. To derive structural information from the FIB-SEM images, extensive post-processing of the data was required. Following image alignment and cropping, stripes and shadow artefacts were filtered out before image segmentation. The *Slice Alignment* operation of the module *ImportGeo* of the *GeoDict 2020* software package was used to align the images, while the *Curtaining Filter* was used for stripes correction (Fig. 4). In general, the segmentation of pores in

FIB-SEM images was not straight forward since scans of porous polished sections are pseudo-2D and contain information from behind the actual imaging plane (De Boever et al. 2015).

FIB-SEM image processing (workflow)

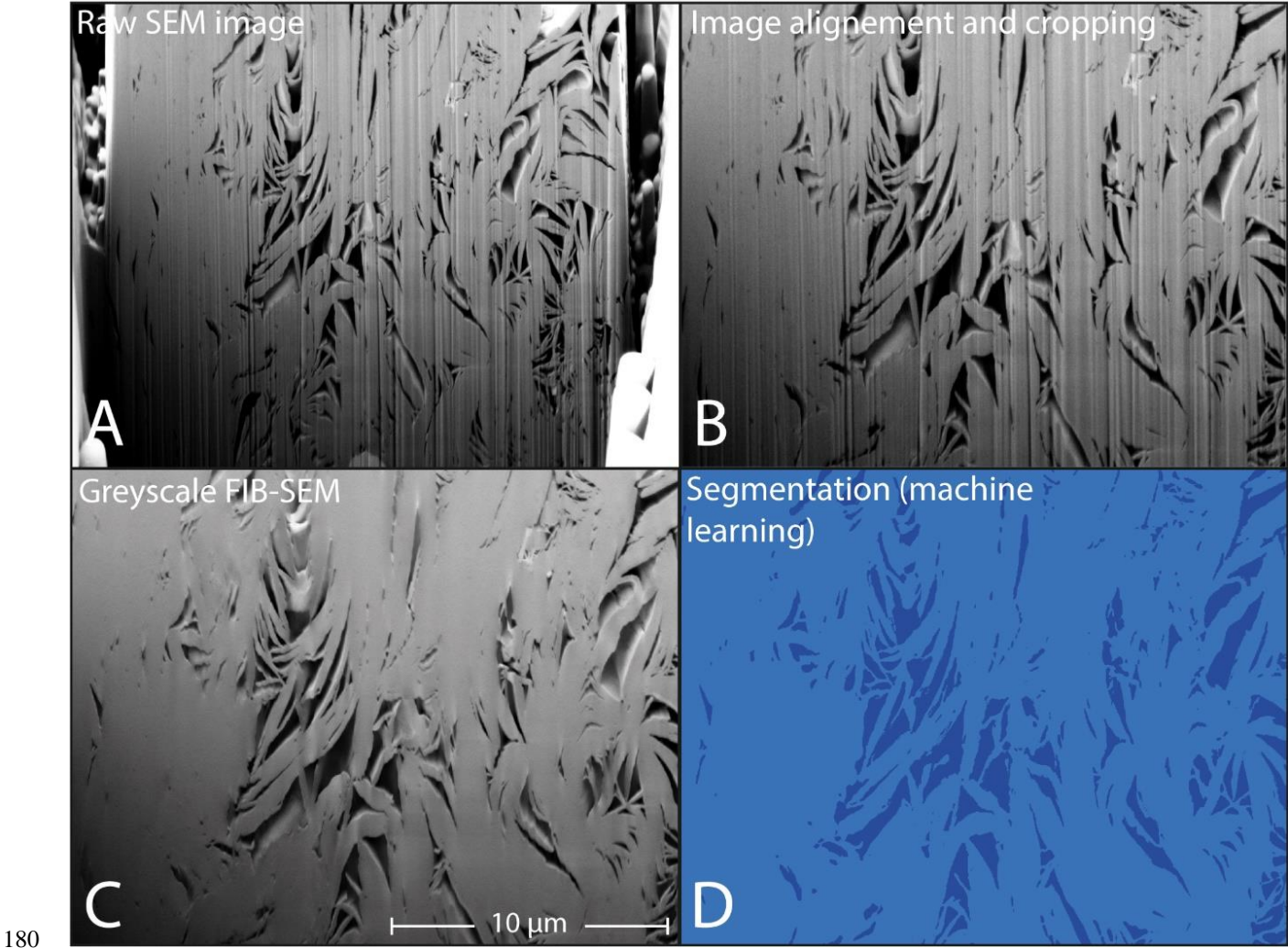


Figure 4 (A) Raw SEM image of secondary illite growth in a porous feldspar with streaks and shadow artefacts. (B) Images with aligned slices of a cropped region of interest. (C) Filtered greyscale SEM image of the illite meshworks. (D) The binarized result after image segmentation with pixel classification algorithms of the software *ilastik*.

As multi-thresholding and watershed segmentation algorithms have problems with shine through artefacts (Prill et al. 2013),

capturing the correct 3D pore space geometry is of crucial importance for the determination of a realistic permeability. Recent

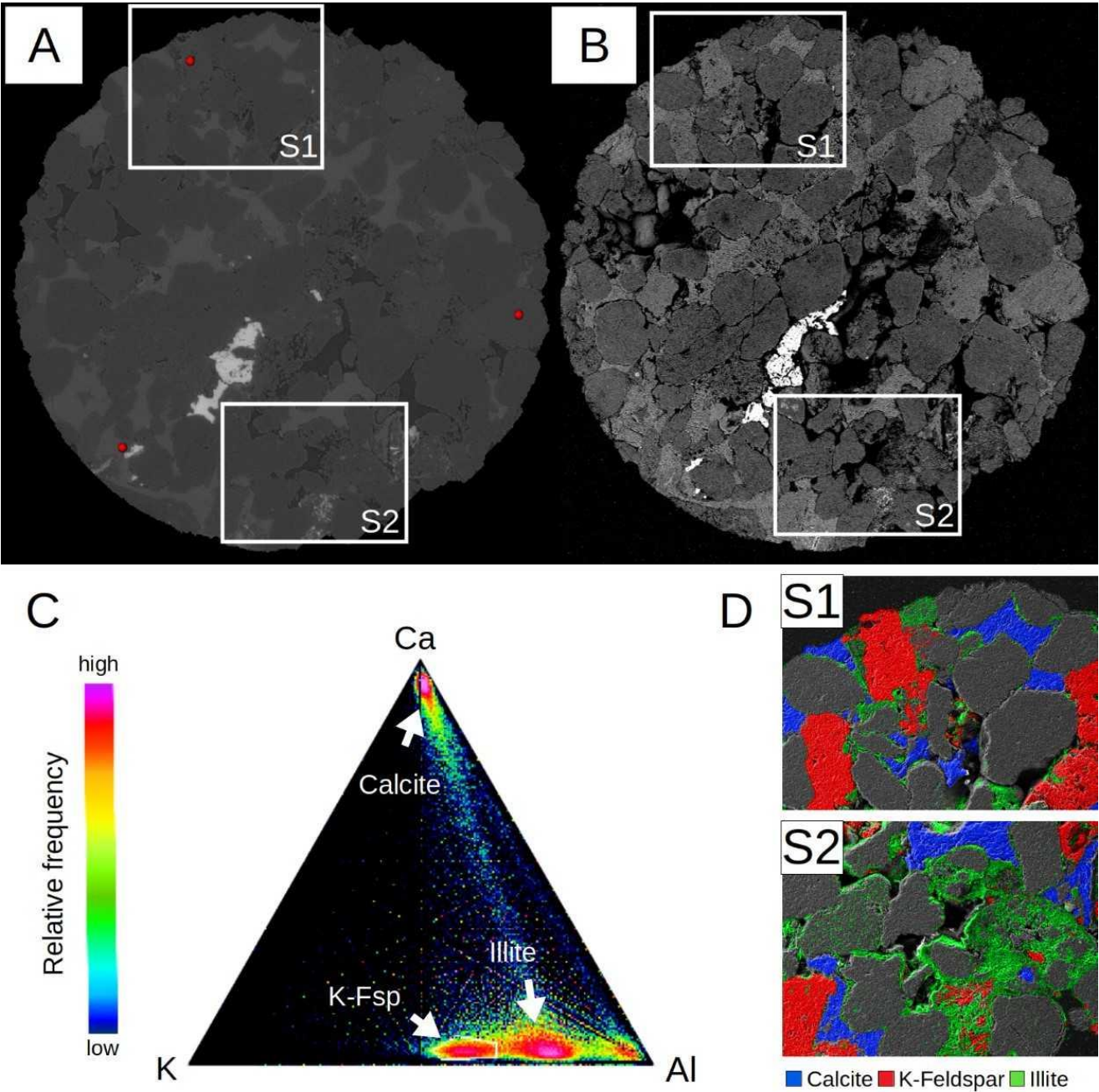
advances have shown that machine learning image segmentation software can successfully be utilized to segment pore space in CT scans (Berg et al. 2018).

The software *ilastik*, an interactive learning and segmentation toolkit by Berg et al. (2019), was used for the interactively supervised machine learning segmentation of the phases in our FIB-SEM images (Fig. 4). The built-in pixel classification module groups the probability of each pixel to be assigned to a phase according to their different imaged features. The software provides a set of different images based on features derived from the original image (filtering and smoothing, edge detection, etc.). Examples of the correct class (phase) provided by the user builds a decision surface in feature space. Based on these features, a Random Forest classifier assigns each pixel/voxel to a certain phase. This method works for both 2D and 3D data. The accuracy of this method increases with the number of user-provided training data. In a manually controlled workflow, it was possible to reach high segmentation accuracies with only minor over- or underestimations of the pore space (Fig. 4C, D).

3.5 Defining microporous domains

The need to define microporous domains results from the mismatch of permeability between μ XCT simulations and gas-driven permeameter tests. While the simulation of permeability in structures with high permeability and porosity obtained by μ XCT scans is precise, the effect of nanoporosity below resolution on permeability increases with decreasing permeability (Pittman and Thomas, 1979; Saxena et al. 2018). When comparing backscattered electron (BSE) images with μ XCT images of the same slice, it becomes apparent that the smallest pores in μ XCT images simplify the real pore structure (Fig. 5). Furthermore, SEM and EDX images revealed that most of the pores are filled with clay minerals. Since both void and microporous regions share similar greyscale values, it is impossible to correctly differentiate upon segmentation. In this approach, the segmentation of the pores includes clay minerals with a low absorption contrast. To determine the distribution of illite in μ XCT scans, we used correlative μ XCT, SEM and EDX measurements. For this, a 3 mm plug was embedded into epoxy resin and then ground and

polished until the region of interest was reached. Two sites were chosen for EDX mappings (Fig. 5). Comparing EDX Mappings with CT images shows that the distribution of illite agrees with the textural findings of Fischer et al. (2012).



210 **Figure 5 (A) μ XCT and corresponding (B) BSE image of the polished section including the close-up regions S1 and S2 that were used for EDX mapping to analyse the distribution of illites. (C) Ternary plot of Ca, K and Al content of each**

215 pixel in the mappings. Calcite, illite and K-feldspar plot in 3 distinct regions. By selecting these areas, a phase map overlay was created that visualises the location of these phases in SE images. (D) Region S1 and S2 with phase map overlays. Illite is predominantly found in the vicinity of altered feldspars, as coating along grain boundaries and as authigenic pore filling.

Furthermore, it becomes apparent that illite enrichments coincide with regions that are usually referred to as void pore space in μ XCT images. The mismatch between real pore structure and segmented pore space is highest in small pores and throats. An average size of $\sim 5 \mu\text{m}$ was measured for illites which cover the surfaces of the quartz and feldspar grains. This corresponds to approximately two voxels in the μ XCT images. To refine flow and reduce the influence of overestimated pore sizes in these specific regions, we define all pores with a diameter ≤ 2 voxels as microporous domains. The Brinkman term accounts for small pores, where grains are porous themselves (Brinkman, 1949). To extract these regions from the initial pore space segmentation F_{p*} we calculated Euclidian distance maps as used by Maurer et al. (2003):

$$d = \sqrt{(x_2 - x_1)^2 + (y_2 - y_1)^2 + (z_2 - z_1)^2} \quad (6)$$

225 where d is the distance between two points, x_1, y_1 and z_1 the coordinates of the first point, and x_2, y_2 and z_2 the coordinates of the second point. By selecting $d(\leq 2)$ all pore voxels with the nearest distance of ≤ 2 voxels to the next solid surface are masked, including the outer rim of larger pores (Fig. 6B). To obtain a mask with pores ≤ 2 voxels, this rim layer surplus must

be removed. This was realized by performing a morphological dilation operation on $d(> 2)$ using a structure element SE_2 of 2^3 voxels. By subtracting the dilated image from $d(> 2)$, the microporous domain data $F_{\mu 2}$ (Fig. 6C) can be obtained.

$$F_{\mu 2} = d(\leq 2) - \delta_{SE_2}(d(> 2)) \tag{7}$$

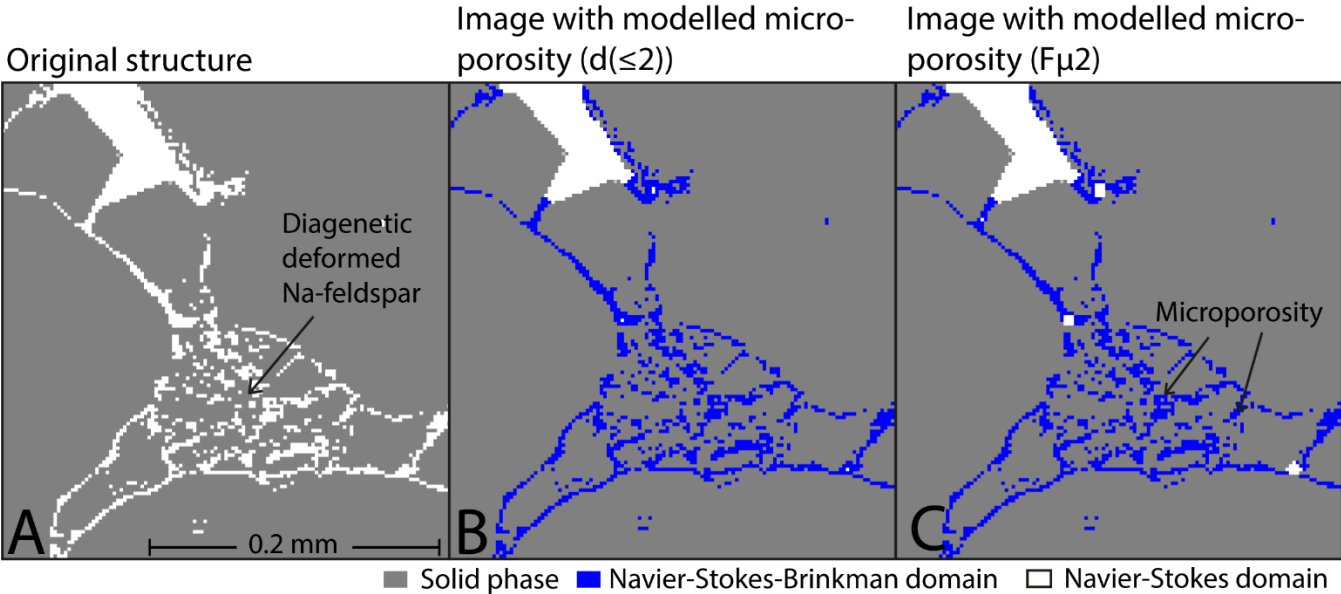


Figure 6 (A) Segmented μ XCT image of the pore space of a mini plug. (B) Image with applied microporous domain using the Euclidian distance map approach (C) Image with removed outer rim layer of larger pores.

In *GeoDict* the permeabilities of the microporous domains are calculated with the Brinkman term. Based on flow simulations on 3D FIB-SEM images of illite meshworks, an isotropic permeability was assigned to the microporous domains (Fig. 6). Yoon and Dewers (2013) confirmed the validity of the approach of extrapolating structural features of clays measured by FIB-SEM to the pore scale. The complete workflow for a precise permeability simulation is illustrated in Fig. 7.

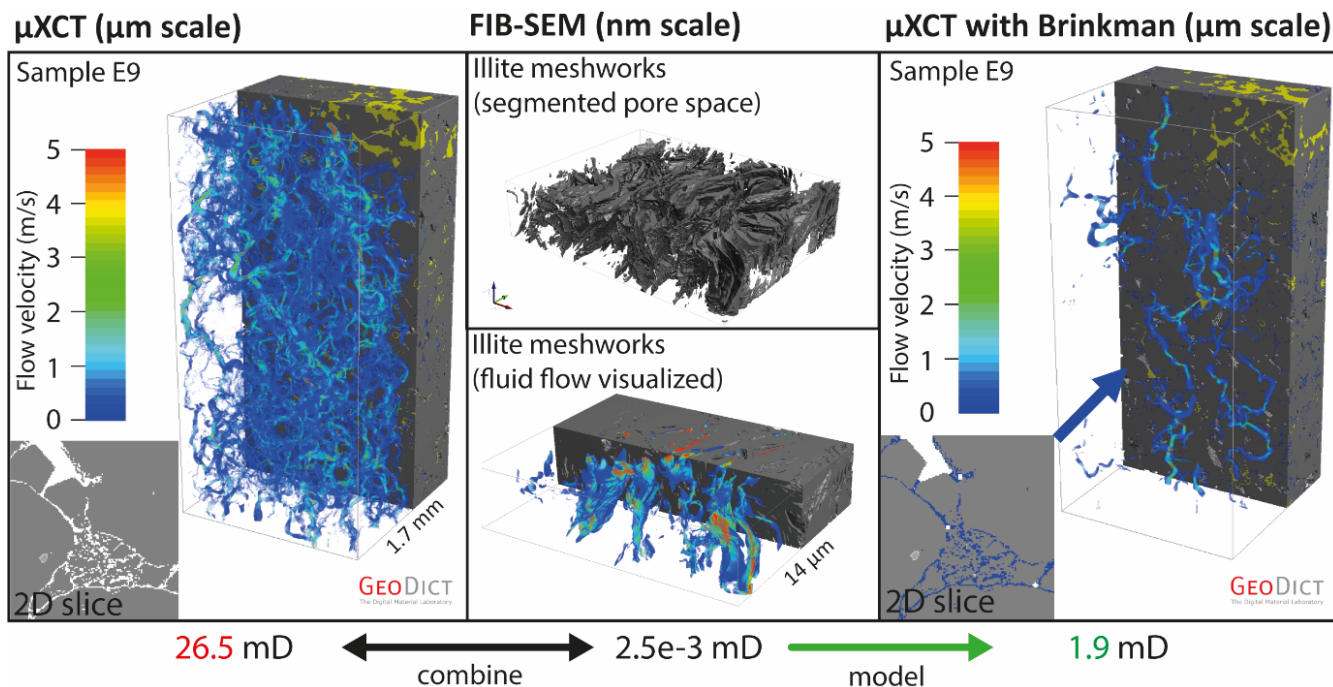


Figure 7 Workflow for microporous domain modelling combining FIB-SEM nanoporosity with μXCT scans. Sample E9 of the aeolian layer with well-distributed flow paths was selected for visualisation. Upon the modelling of the microporous domains, the total fluid-flow velocity decreases. Displayed simulated permeabilities include the mean values of five samples with the best distribution of percolation paths. Fluid-flow velocities close to zero are transparent.

4.1 Permeability measurements and pore size distribution

Four to six pressure stages were applied to the plug samples to determine their gas permeability. In Table 1, parameters which were used for the permeameter test are shown exemplary for sample F8. These values yield a Klinkenberg factor of 0.56 and a quadratic regression coefficient of 0.94

250 **Table 1: Parameters of the gas permeameter flux experiment (sample F8), including measured helium gas flow rate, recorded inflow and outflow pressures as well as calculated apparent gas permeability for each pressure stage. For evaluating the intrinsic sample permeability, the sample cross-section (0.025 m) and length (0.05 m) as well as the dynamic viscosity of helium (18.4×10^{-6} Pas) is also needed.**

Pressure stage	Inflow pressure (Pa)	Outflow pressure (Pa)	Flow rate (m ³ /s)	Apparent permeability (mD)
1	129522.3	109151	2.8803e-08	2.38
2	149587.1	129167.9	2.8401e-08	2.38
3	174634.9	154120.4	2.7072e-08	2.28
4	224581.7	204228.1	2.5041e-08	2.16
5	324516.8	304066.2	2.4409e-08	2.13

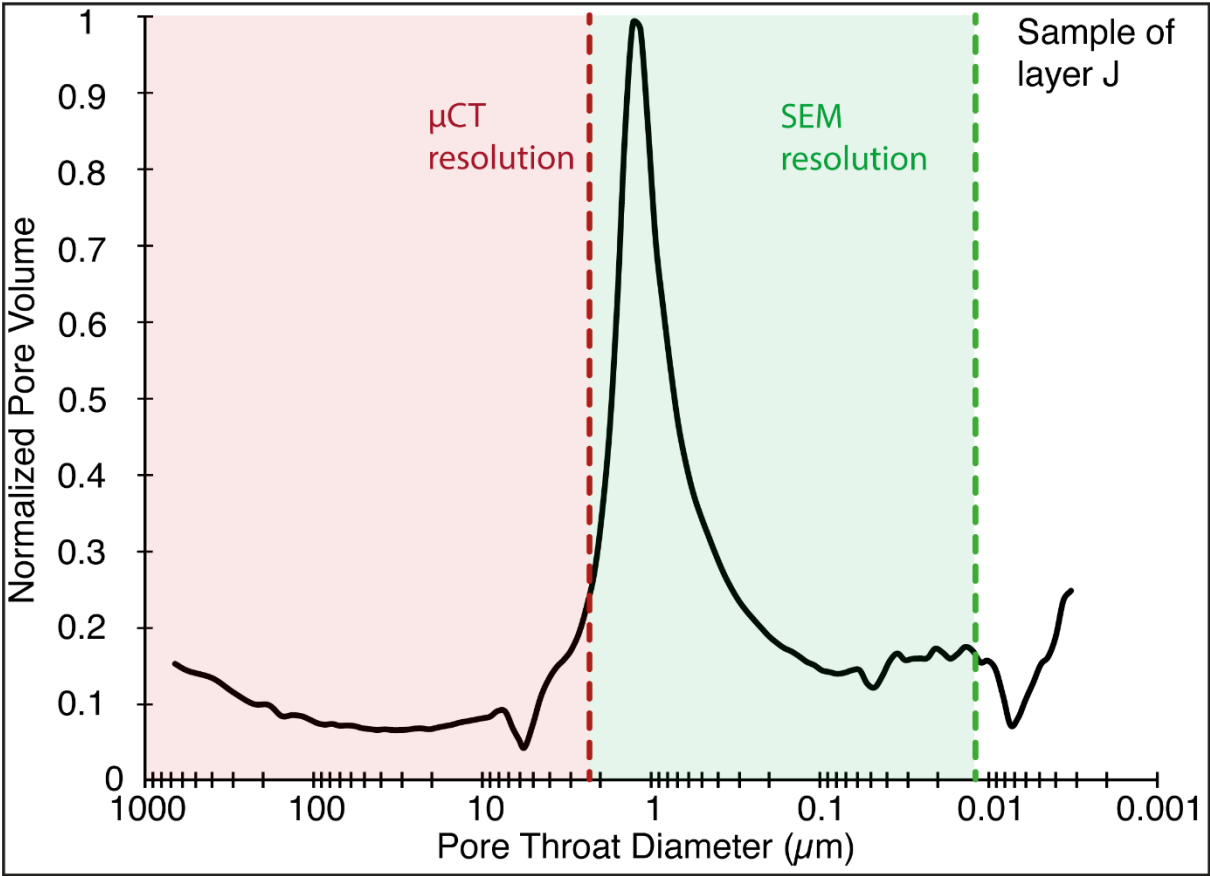
255 Overall, the measured intrinsic permeabilities range between 1.1 mD and 5.4 mD with an average value of 2.9 mD for both aeolian facies (Table 2; Fig. 1, sample series E and F). The quadratic regression coefficient ranges from 0.732 to 0.998 which indicates a high accuracy of the permeameter test. The small variation of the physical rock properties between the main layers is induced by different angles of the grain layering in each plug sample and small-scale variations in grain and pore size distributions. The observed variance is in the typical range of observed permeability fluctuations for tight reservoir sandstones
260 (Lis-Śledziona, 2019). Considering the observed permeability, the studied rock samples are at the lower end of the permeability range known for sedimentary reservoir rocks (Gluyas and Swarbrick, 2004).

Table 2: Intrinsic permeabilities and porosities of the measured sandstone plug samples.

	E5	E6	E7	E8	E13	F4	F6	F8	F9	Mean	Standard deviation (±1σ)
Permeability (mD)	1.1	5.1	5.4	2.2	4.2	2.3	2.3	1.9	1.4	2.9	1.5

265 The pore size distribution of the sub-sample analysed by mercury intrusion porosimetry (section 3.2) was obtained by a semi-logarithmic representation of the normalized intrusion volume achieved per pressure interval (Fig. 8). The consumed capillary stem intrusion volume of 27 % was within the acceptable range needed for precise measurements. We discovered a major peak at approximately 1 μm, representing the most common pore throat diameter.

Mercury intrusion porosimetry (MIP)



270 Figure 8 Distribution of the pore throat diameters of a sample of the aeolian facies in layer J obtained from mercury intrusion porosimetry (MIP).

In addition to the mercury porosimetry results, calculations of the pore size distribution of FIB-SEM and μ XCT mini plug images were conducted using the *GeoDict* module *PoroDict*. This module provides an algorithm that virtually pushes spheres of different sizes into a medium to determine the 3D pore size distribution (Münch and Holzer, 2008). FIB-SEM measurements of the pore size distribution cover the small pores related to the illite nanoporosity, while μ XCT porosimetry illustrates the pore size distribution of the larger scale intergranular pore space skeleton.

Pore size distribution (PSD)

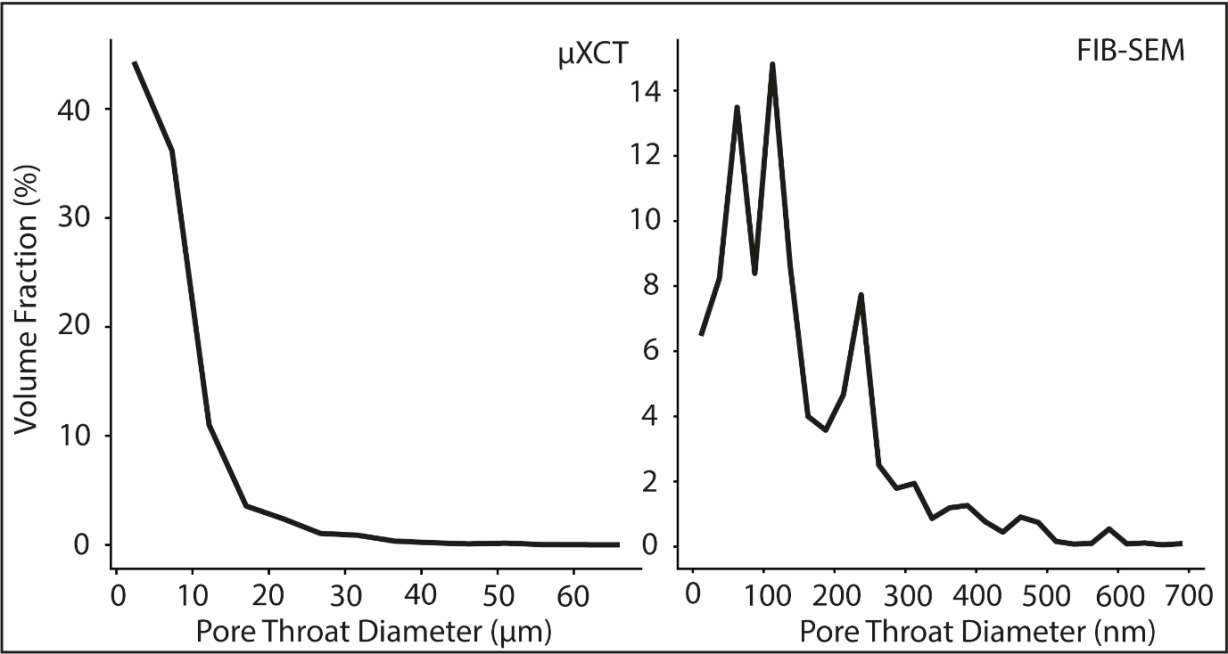


Figure 9 Pore throat diameters from μ XCT (left) and FIB-SEM images (right).

The μ XCT pore volume analysis shows a constant rise towards the smallest observed pore diameters (2.44 μ m, Fig. 9). The steepest slope is observed between 7.3 and 12.2 μ m which indicates that the largest volume of pore bodies is observed in that range. The calculated pore size distribution from nanoporous 3D structures of illite meshworks obtained by FIB-SEM imaging shows three distinct peaks in its at 75 nm, 125 nm and 250 nm. This illustrates that the most common inscribed pore diameters are relatively small compared to the actual extent of the pores, which is considered typical for slit-shaped pore systems where the pore axial ratio is high (Desbois et al. 2016). Ultimately, this results from the different thicknesses of clay platelets and heterogeneity in the alignment of the illite nanostructure (Aplin et al. 2006).

An apparent gap exists between diameters observed by MICP and 3D imaging with FIB-SEM and μ XCT. While MICP peaks at around 1 μ m, diameters observed by μ XCT start at 2.4 μ m and the largest inscribed diameters observed by FIB-SEM are below 700 nm. However, it must be noted that pressure-controlled MICP generally gives information about the dimension of pore throats whereas pore size distributions provided by imaging techniques give information about pore body volumes (Zhao et al. 2015). Furthermore, pore shielding may cause an underestimation of larger pores for MICP (Abell et al. 1999; Gane et al. 2004). The occurrence of authigenic illites is the likely cause of this effect as they are commonly found in pore throat areas. Since the Washburn equation assumes ideal pore throats of cylindrical shape, the underestimation of larger pores becomes more evident with the increasing complexity of the pore throat system at both the mm and nm scale (Washburn, 1921). Therefore, a direct comparison between the used methods is unlikely to result in compatible results.

4.2 Permeability simulation

A calculated isotropic permeability of $2.53 \cdot 10^{-3}$ mD was used for the microporous domains based on the Navier-Stokes fluid-flow simulations of permeability of FIB-SEM scans of the illite meshworks. The number of porous voxels resulting from clay mineral modelling ranges between 3.3 vol.-% and 7.1 vol.-% of the total structure volume for all considered μ XCT scans. A comparison of the modelled clay minerals in μ XCT scans with XRD mass balancing highlights a large difference between the measured mineral abundances (Table 3, Fig. 2).

Table 3: Modelled clay mineral content within the microporous domains in μ XCT scans.

	C3	D2	D9	E9	F7	G2	G8	H9	I3	I9	J3	J7	Mean	Standard deviation ($\pm 1\sigma$)
Clay mineral content (vol.-%)	4.7	3.3	5.0	5.4	7.1	5.0	6.0	6.3	4.1	6.2	6.2	6.1	5.4	1.0

While the mean amount of clay minerals based on XRD measurements was 12.7 wt.-% (about 11.3 vol.-% within a structure with 8 % porosity), an average amount of 5.4 vol.-% was modelled by the distance map algorithm. This is expected since the illite content inside grains was not modelled since it has no effect on permeability. We simulated permeability of 12 mini plug samples that were scanned by μ XCT and compared them with measurements from gas permeameter experiments. As a first

step, we extracted and illustrated the ten and hundred largest open flow paths through the pore space of all mini plug cores before the modelling of the microporous domains (Fig. 10). This yields information concerning the heterogeneity of the flow fields and allows to check the validity of the Navier-Stokes simulations. Structures with flow impingement often cause numerical problems which results in an artificial underestimation of the permeability simulations. Significant underestimations of permeability after clay mineral modelling were also found in areas where the percolation paths in the samples were limited to a few voxels in the structure before modelling.

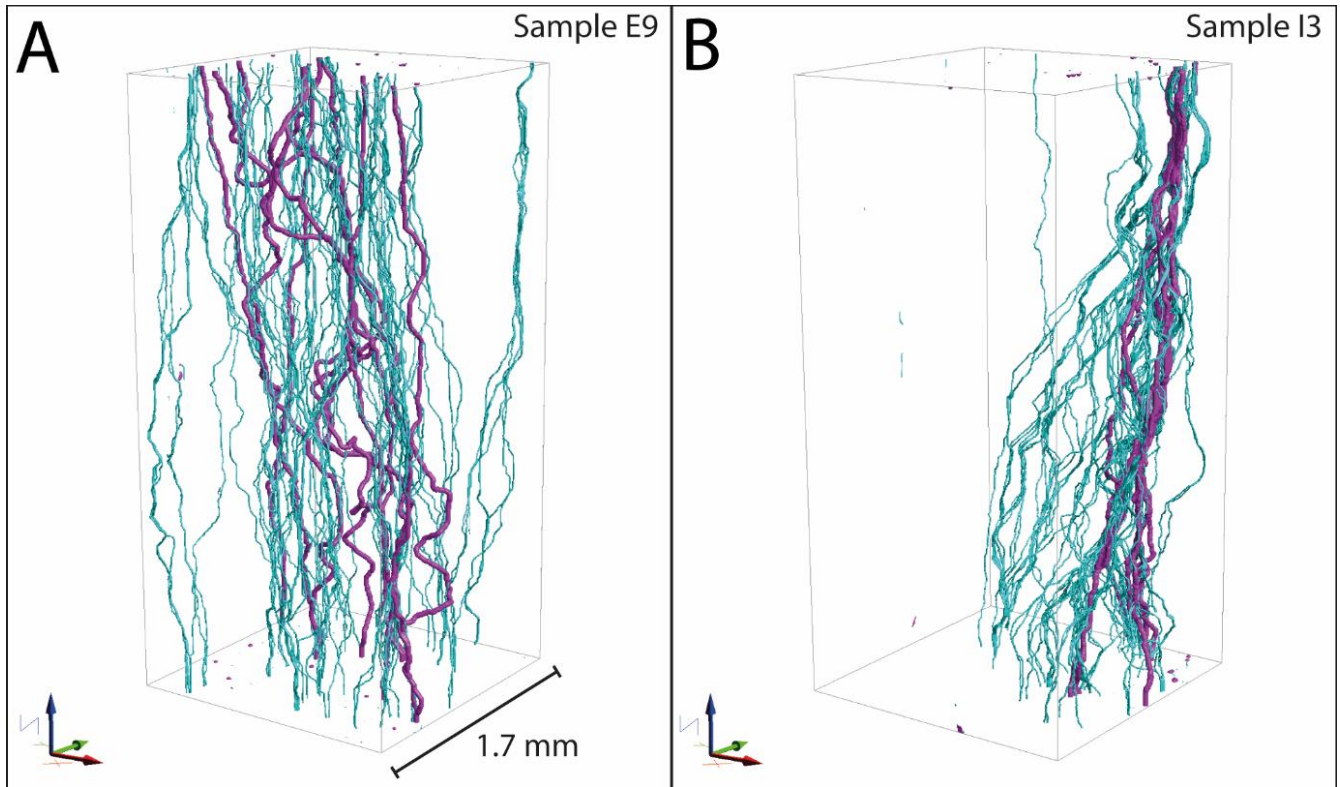


Figure 10 Comparison of percolation paths in two μ XCT reconstructions of the 3D imaging data without microporous domain modelling (A) Well distributed percolation paths in a μ XCT reconstruction of mini plug sample E9 without microporous domain modelling. (B) Constricted percolation paths with flow impingement limited to a small region of the structure in mini plug sample I3 without microporous domain modelling. The ten largest percolation paths are coloured in purple, the hundred largest percolation paths are coloured in cyan.

This effect leads to an artificial permeability drop, which renders calculations to be less precise. Since evenly distributed flow paths are necessary to determine the true permeability of a volume of a rock, we considered only permeability calculations of

samples which show no flow impingement for modelling (Bear, 1972; Leu et al. 2014; Zhang et al. 2000). The validity of the simulations was ensured by applying the variance algorithm on the flow fields discussed in Jacob et al. (2019).

The mean value of the experimentally obtained intrinsic gas permeabilities was 2.9 mD (Table 2, Fig. 11A). Samples with no flow impingement had an initial mean permeability of 26.5 mD, whereas the mean permeability simulated on μ XCT images was 26.5 (Fig. 11B). With applied microporous domains, a mean permeability of 1.9 mD was calculated (Fig. 11C).

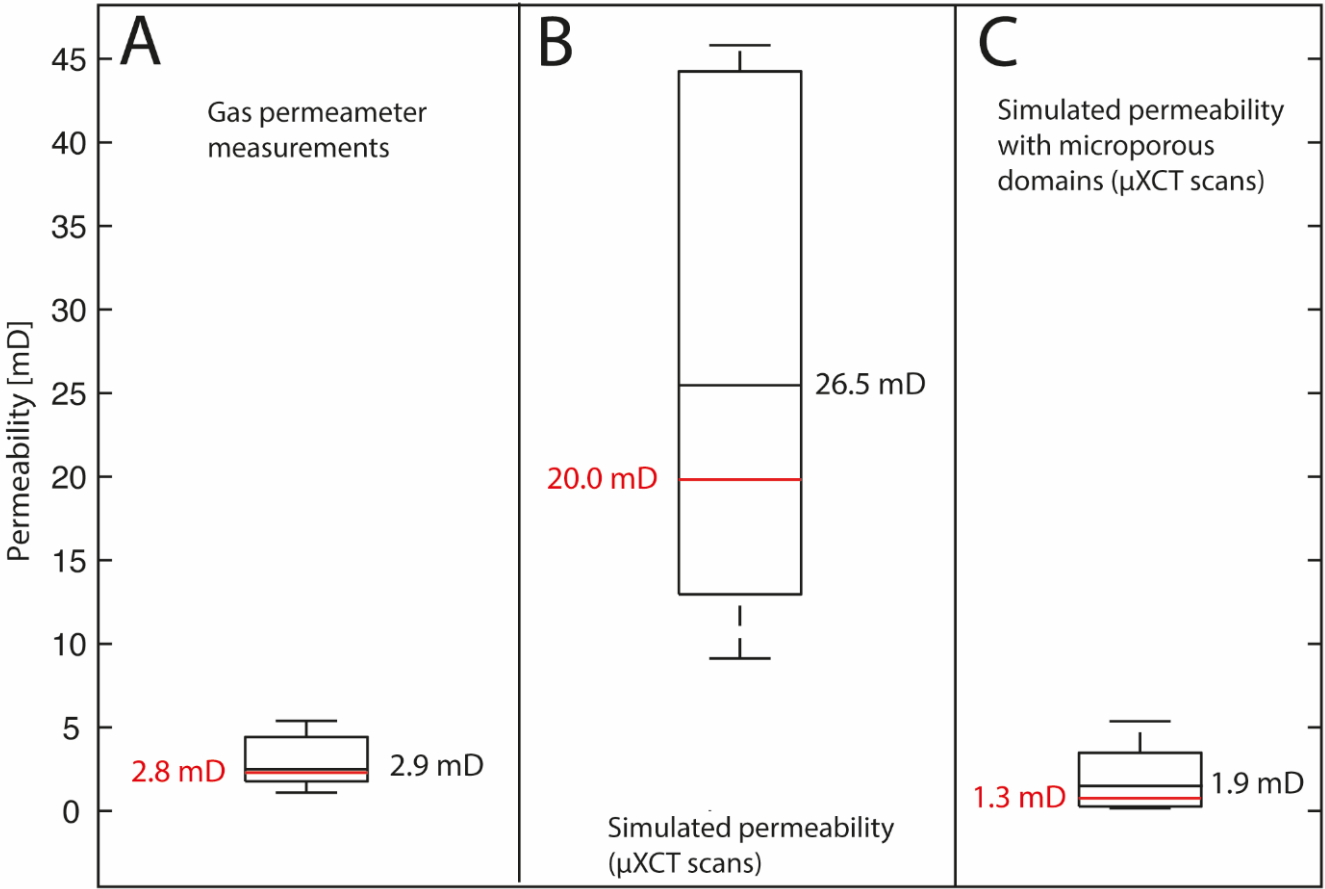


Figure 11 Comparison of measured and simulated permeabilities. The boxes indicate the upper and lower quartile of derived permeability values. Median values are coloured in red, mean values are coloured in black. (A) Measured permeabilities using the gas permeameter test. (B) Simulated permeabilities using μ XCT data. (C) Simulated permeabilities using μ XCT data with modelled microporous domains.

The mismatch between measured and simulated permeabilities could be decreased to 1 mD (-34.5 %) compared to 23.6 mD (+813.8 %) prior to the modelling. Hence, our approach significantly improved the match between measured and simulated permeabilities and lies within the standard deviation of the permeabilities measured by the gas permeameter (Table 2). Histograms of the simulated fluid-flow velocities indicate a strong decrease in velocities due to the modelling of the microporous domains in sample E9 (Fig. 12). Correlation histograms of the velocities depict differences induced by the modelling. While identical fluid-flow field velocities would plot as a single straight line, the velocities, in this case, show straight lines with varying slopes. This indicates a general decrease of the fluid-flow velocities with a splitting of different flow path velocities. Points which plot as a line represent a main fluid-flow path with a direct correlation of the velocities between the original and the modelled structures flow field. Furthermore, a wider spread of the distribution of high velocities results from microporous domain modelling. This indicates narrow pore throats where fluid-flow velocities are locally enhanced compared to the structure before the modelling.

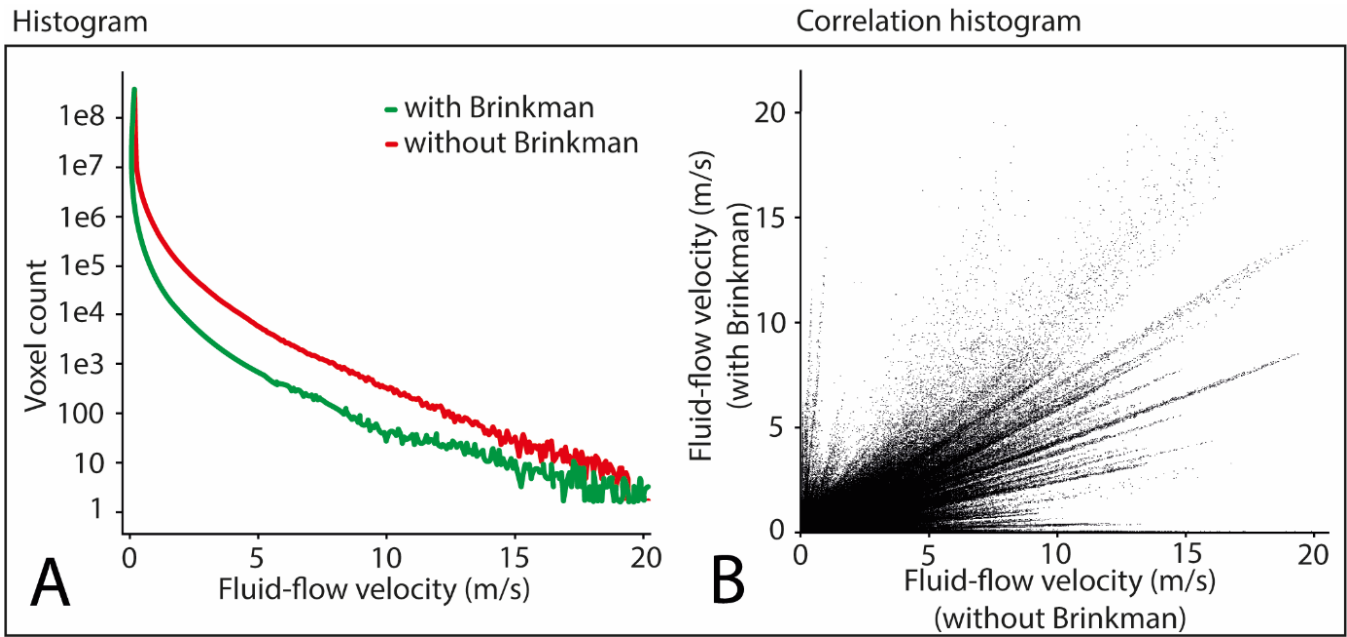


Figure 12 Comparison of unmodelled μ XCT images and modelled microporous domain images (A). Correlation histogram prior to and after the modelling that shows a decrease of the main fluid-flow velocities, while few velocities after the modelling were increased with a wide spread of distribution (B).

Based on our combined analytical and numerical study, further research may help to increase the accuracy of simulated permeabilities even further. Since isotropic permeabilities of the microporous domains were applied to μ XCT images, the

350 accuracy can be improved by taking the anisotropy of clay mineral fabrics and surface topology into account. This can be done by applying anisotropic permeabilities in the calculation of the microporous domains. While this study showed a good match between the experimental and simulated permeability, the need to include heterogeneities of clay mineral layering to improve the simulations was depicted in Villi  ras et al. (1997).

The presented approach might also be applicable to other rock types such as mudrocks, carbonates, etc., if the preconditions are met. The examined rock properties (e.g. permeability) should be based on the same scale dependencies as the rock analysed in this work (e.g. Grathoff et al. 2016).

5 Conclusions

Overall, the outcome of this study shows that combining μ XCT and FIB-SEM imaging with numerical models constitutes a valuable and novel approach for determining physical properties of clay-bearing tight reservoir rocks. Considering the high number of accessible pores in the scans, the phenomenon of flow impingement was mainly attributed to the unresolvable nanoporosity. While permeability, which is one of the most important reservoir properties, is often determined by simulations based on μ XCT scans of small samples taken from a field-scale reservoir, we could demonstrate that an accurate estimation for clay-rich and low permeable rocks is only possible if nanoscale porosity is also included. Thus, our simulations using the Euclidian distance map approach resulted in an improved match with stationary gas permeameter measurements in contrast to permeability simulations merely based on unmodified μ XCT images. Adopting this multi-method approach, we increased the accuracy of simulated permeabilities of samples measured by μ XCT. These results have important implications for improved modelling of reservoirs relevant to gas and water applications. A realistic simulated permeability of a tight reservoir sandstone could only be achieved by appropriate modelling of the nanoporosity related to matrix clay minerals (illite) that occur below the μ XCT resolution. The simulated permeability based on combined μ XCT and FIB-SEM images and modelled microporous domains showed good agreement with the experimental results. Obtaining an even distribution of the simulated fluid-flow paths through the sample without flow impingement was necessary to obtain an accurate permeability estimation from 3D imaging. Resolving the nanopore structure and distribution of clay mineral-related features by the combined analytical and numerical modelling approach represents a tool for achieving a more accurate understanding of the fluid flow behaviour within

tight sandstones, with direct relevance to predicting the injection, storage or extraction of gas or water in a reservoir rock. Our
375 multi-method approach can be applied to determine more accurate permeability values and flow paths for reservoir rocks with
high clay mineral contents if direct experimental measurements are not successful. Hence, future studies should focus on
distinguishing the different morphologies of clay minerals and their related anisotropic effect on rock permeability. While the
permeability of the nanoporous structures depends highly on the layering of the clays and their spatial orientation on the grain
surfaces and within feldspars. This approach should include a variety of various sedimentological facies also with high porosity
380 and permeability investigating whether clay mineral modelling is also a valid tool for such sedimentary rocks.

Author contribution

Conceptualization, A.J., M.P., S.H., F.E., L.N.W., G.G., P.B. and M.K., Methodology, A.J. and M.P., Software, A.J., M.P., F.E., Validation, A.J., M.P., S.H., F.E., L.N.W., G.G., P.B. and M.K., Formal analysis, A.J. and M.P., Investigation, A.J.,
385 M.P., S.H., and O.M., Resources, F.E., L.N.W., G.G., P.B. and M.K., Data curation, A.J., M.P., S.H., F.E., O.M., L.N.W., G.G., P.B., M.K., Writing – Original Draft, A.J., Writing – Review & Editing, A.J., M.P., S.H., F.E., O.M., L.N.W., G.G., P.B., M.K., Visualization, A.J. and M.P., Supervision, F.E., L.N.W., G.G., P.B. and M.K., Project Administration, F.E., L.N.W., G.G., P.B. and M.K., Funding Acquisition, F.E., L.N.W., G.G., P.B. and M.K.

390 Competing interests

The authors declare that they have no conflict of interest.

Acknowledgements

This work was supported by the German Federal Ministry of Education and Research (BMBF) “Geological Research for Sustainability (GEO:N)” program, which is part of the BMBF “Research for Sustainable Development (FONA3)” framework
395 program. It is part of the project ResKin (Reaction kinetics in reservoir rocks, 03G0871E). We would like to thank Fabian Wilde and the staff of PETRA synchrotron facility at DESY Hamburg for their assistance at the imaging beamline P05. Jens Hornung and Meike Hintze from the TU Darmstadt are also acknowledged for enabling us gas permeability measurements of the studied samples.

400 References

- Abell, A. B., Willis, K. L. and Lange, D. A.: Mercury Intrusion Porosimetry and Image Analysis of Cement-Based Materials, *Journal of Colloid and Interface Science*, 211(1), 39–44, doi:10.1006/jcis.1998.5986, 1999.
- Ahmad, K. M., Kristaly, F. and Docs, R.: Effects of clay mineral and physico-chemical variables on sandstone rock permeability, edited by Z. Turzo, *jogps*, 1(1), 18–26, doi:10.30881/jogps.00006, 2018.
- 405 Alyafei, N., Raeini, A. Q., Paluszny, A. and Blunt, M. J.: A Sensitivity Study of the Effect of Image Resolution on Predicted Petrophysical Properties, *Transp Porous Med*, 110(1), 157–169, doi:10.1007/s11242-015-0563-0, 2015.
- Andrä, H., Combaret, N., Dvorkin, J., Glatt, E., Han, J., Kabel, M., Keehm, Y., Krzikalla, F., Lee, M., Madonna, C., Marsh, M., Mukerji, T., Saenger, E. H., Sain, R., Saxena, N., Ricker, S., Wiegmann, A. and Zhan, X.: Digital rock physics benchmarks—Part I: Imaging and segmentation, *Computers & Geosciences*, 50, 25–32, doi:10.1016/j.cageo.2012.09.005, 410 2013a.
- Andrä, H., Combaret, N., Dvorkin, J., Glatt, E., Han, J., Kabel, M., Keehm, Y., Krzikalla, F., Lee, M., Madonna, C., Marsh, M., Mukerji, T., Saenger, E. H., Sain, R., Saxena, N., Ricker, S., Wiegmann, A. and Zhan, X.: Digital rock physics benchmarks—part II: Computing effective properties, *Computers & Geosciences*, 50, 33–43, doi:10.1016/j.cageo.2012.09.008, 2013b.
- 415 Aplin, A. C., Matenaar, I. F., McCarty, D. K. and van der Pluijm, B. A.: Influence of mechanical compaction and clay mineral diagenesis on the microfabric and pore-scale properties of deep-water Gulf of Mexico mudstones, *Clays Clay Miner.*, 54(4), 500–514, doi:10.1346/CCMN.2006.0540411, 2006.
- Bear, J.: Dynamics of fluids in porous media, American Elsevier Pub. Co, New York., 1972.
- Berg, S., Saxena, N., Shaik, M. and Pradhan, C.: Generation of ground truth images to validate micro-CT image-processing 420 pipelines, *The Leading Edge*, 37(6), 412–420, doi:10.1190/tle37060412.1, 2018.
- Berg, S., Kutra, D., Kroeger, T., Straehle, C. N., Kausler, B. X., Haubold, C., Schiegg, M., Ales, J., Beier, T., Rudy, M., Eren, K., Cervantes, J. I., Xu, B., Beuttenmueller, F., Wolny, A., Zhang, C., Koethe, U., Hamprecht, F. A. and Kreshuk, A.: ilastik: interactive machine learning for (bio)image analysis, *Nat Methods*, doi:10.1038/s41592-019-0582-9, 2019.
- Brinkman, H. C.: Calculations on the flow of heterogeneous mixtures through porous media, *Appl. Sci. Res.*, 1(1), 333, 425 doi:10.1007/BF02120339, 1949.
- Brunke, O., Brockdorf, K., Drews, S., Müller, B., Donath, T., Herzen, J. and Beckmann, F.: Comparison between x-ray tube-based and synchrotron radiation-based μ CT, edited by S. R. Stock, p. 70780U, San Diego, California, USA., 2008.
- Buades, A., Coll, B. and Morel, J.-M.: Non-Local Means Denoising, *Image Processing On Line*, 1, doi:10.5201/ipol.2011.bcm_nlm, 2011.
- 430 Darcy, H.: Les Fontaines Publiques de la Ville de Dijon, Dalmont, 1856.

- De Boever, W., Derluyn, H., Van Loo, D., Van Hoorebeke, L. and Cnudde, V.: Data-fusion of high resolution X-ray CT, SEM and EDS for 3D and pseudo-3D chemical and structural characterization of sandstone, *Micron*, 74, 15–21, doi:10.1016/j.micron.2015.04.003, 2015.
- Desbois, G., Urai, J. L., Hemes, S., Schröppel, B., Schwarz, J.-O., Mac, M. and Weiel, D.: Multi-scale analysis of porosity in diagenetically altered reservoir sandstone from the Permian Rotliegend (Germany), *Journal of Petroleum Science and Engineering*, 140, 128–148, doi:10.1016/j.petrol.2016.01.019, 2016.
- Doebelin, N. and Kleeberg, R.: *Profex*: a graphical user interface for the Rietveld refinement program *BGMN*, *J Appl Crystallogr*, 48(5), 1573–1580, doi:10.1107/S1600576715014685, 2015.
- Filomena, C. M., Hornung, J. and Stollhofen, H.: Assessing accuracy of gas-driven permeability measurements: a comparative study of diverse Hassler-cell and probe permeameter devices, *Solid Earth*, 5(1), 1–11, doi:10.5194/se-5-1-2014, 2014.
- Fischer, C., Dunkl, I., Von Eynatten, H., Wijbrans, J. R. and Gaupp, R.: Products and timing of diagenetic processes in Upper Rotliegend sandstones from Bebertal (North German Basin, Parchim Formation, Flechtingen High, Germany), *Geol. Mag.*, 149(5), 827–840, doi:10.1017/S0016756811001087, 2012.
- Gane, P. A. C., Ridgway, C. J., Lehtinen, E., Valiullin, R., Furó, I., Schoelkopf, J., Paulapuro, H. and Daicic, J.: Comparison of NMR Cryoporometry, Mercury Intrusion Porosimetry, and DSC Thermoporosimetry in Characterizing Pore Size Distributions of Compressed Finely Ground Calcium Carbonate Structures, *Ind. Eng. Chem. Res.*, 43(24), 7920–7927, doi:10.1021/ie049448p, 2004.
- Gao, H. and Li, H. A.: Pore structure characterization, permeability evaluation and enhanced gas recovery techniques of tight gas sandstones, *Journal of Natural Gas Science and Engineering*, 28, 536–547, doi:10.1016/j.jngse.2015.12.018, 2016.
- Gluyas, J. G. and Swarbrick, R. E.: *Petroleum geoscience*, Blackwell Pub, Malden, MA., 2004.
- Grathoff, G. H., Peltz, M., Enzmann, F., and Kaufhold, S.: Porosity and permeability determination of organic-rich Posidonia shales based on 3-D analyses by FIB-SEM microscopy, *Solid Earth*, 7, 1145–1156, <https://doi.org/10.5194/se-7-1145-2016>, 2016.
- Guan, K. M., Nazarova, M., Guo, B., Tchelepi, H., Kovscek, A. R. and Creux, P.: Effects of Image Resolution on Sandstone Porosity and Permeability as Obtained from X-Ray Microscopy, *Transp Porous Med*, 127(1), 233–245, doi:10.1007/s11242-018-1189-9, 2019.
- Heidsiek, M., Butscher, C., Blum, P. and Fischer, C.: Small-scale diagenetic facies heterogeneity controls porosity and permeability pattern in reservoir sandstones., *Environmental Earth Sciences*, doi:10.1007/s12665-020-09168-z, 2020.
- Hemes, S., Desbois, G., Urai, J. L., Schröppel, B. and Schwarz, J.-O.: Multi-scale characterization of porosity in Boom Clay (HADES-level, Mol, Belgium) using a combination of X-ray μ -CT, 2D BIB-SEM and FIB-SEM tomography, *Microporous and Mesoporous Materials*, 208, 1–20, doi:10.1016/j.micromeso.2015.01.022, 2015.
- Iliev, O. and Laptev, V.: On numerical simulation of flow through oil filters, *Comput Visual Sci*, 6(2–3), 139–146, doi:10.1007/s00791-003-0118-8, 2004.

- 465 Jacob, A., Enzmann, F., Hinz, C. et al. Analysis of Variance of Porosity and Heterogeneity of Permeability at the Pore Scale. *Transp Porous Med* 130, 867–887. doi:10.1007/s11242-019-01342-7, 2019.
- Jiang, S.: Clay Minerals from the Perspective of Oil and Gas Exploration, in *Clay Minerals in Nature - Their Characterization, Modification and Application*, edited by M. Valaskova, InTech., 2012.
- 470 Kessler, R. M., Ellis, J. R. and Eden, M.: Analysis of Emission Tomographic Scan Data: Limitations Imposed by Resolution and Background, *Journal of Computer Assisted Tomography*, 8(3), 514–522, doi:10.1097/00004728-198406000-00028, 1984.
- Ketcham, R. A. and Carlson, W. D.: Acquisition, optimization and interpretation of X-ray computed tomographic imagery: applications to the geosciences, *Computers & Geosciences*, 27(4), 381–400, doi:10.1016/S0098-3004(00)00116-3, 2001.
- 475 Khan, F., Enzmann, F. and Kersten, M.: Multi-phase classification by a least-squares support vector machine approach in tomography images of geological samples, *Solid Earth*, 7(2), 481–492, doi:10.5194/se-7-481-2016, 2016.
- Kling, T., Vogler, D., Pastewka, L., Amann, F. and Blum, P.: Numerical Simulations and Validation of Contact Mechanics in a Granodiorite Fracture, *Rock Mech Rock Eng*, 51(9), 2805–2824, doi:10.1007/s00603-018-1498-x, 2018.
- Klinkenberg, L. J.: The permeability of porous Media to liquids and gases, 1941.
- 480 Leu, L., Berg, S., Enzmann, F., Armstrong, R. T. and Kersten, M.: Fast X-ray Micro-Tomography of Multiphase Flow in Berea Sandstone: A Sensitivity Study on Image Processing, *Transp Porous Med*, 105(2), 451–469, doi:10.1007/s11242-014-0378-4, 2014.
- Linden, S., Wiegmann, A. and Hagen, H.: The LIR space partitioning system applied to the Stokes equations, *Graphical Models*, 82, 58–66, doi:10.1016/j.gmod.2015.06.003, 2015.
- 485 Lindquist, W. B., Venkatarangan, A., Dunsmuir, J. and Wong, T.: Pore and throat size distributions measured from synchrotron X-ray tomographic images of Fontainebleau sandstones, *J. Geophys. Res.*, 105(B9), 21509–21527, doi:10.1029/2000JB900208, 2000.
- Lis-Śledziona, A.: Petrophysical rock typing and permeability prediction in tight sandstone reservoir, *Acta Geophys.*, 67(6), 1895–1911, doi:10.1007/s11600-019-00348-5, 2019.
- 490 Liu, G., Bai, Y., Fan, Z. and Gu, D.: Determination of Klinkenberg Permeability Conditioned to Pore-Throat Structures in Tight Formations, *Energies*, 10(10), 1575, doi:10.3390/en10101575, 2017.
- Liu, M. & Mostaghimi, P.: Reactive transport modelling in dual porosity media, *Chemical Engineering Science* 190, doi: 10.1016/j.ces.2018.06.005, 2018.
- Liu, M., Starchenko, V., Anovitz, L.M., Stack, A.G.: Grain detachment and transport clogging during mineral dissolution in carbonate rocks with permeable grain boundaries, *Geochemica et Cosmochimica Acta*, 280, doi: 10.1016/j.gca.2020.04.022, 495 2020.

- Markussen, Ø., Dypvik, H., Hammer, E., Long, H. and Hammer, Ø.: 3D characterization of porosity and authigenic cementation in Triassic conglomerates/arenites in the Edvard Grieg field using 3D micro-CT imaging, *Marine and Petroleum Geology*, 99, 265–281, doi:10.1016/j.marpetgeo.2018.10.015, 2019.
- 500 Maurer, C. R., Rensheng Qi and Raghavan, V.: A linear time algorithm for computing exact Euclidean distance transforms of binary images in arbitrary dimensions, *IEEE Trans. Pattern Anal. Machine Intell.*, 25(2), 265–270, doi:10.1109/TPAMI.2003.1177156, 2003.
- Mayo, S., Josh, M., Nesterets, Y., Esteban, L., Pervukhina, M., Clennell, M. B., Maksimenko, A. and Hall, C.: Quantitative micro-porosity characterization using synchrotron micro-CT and xenon K-edge subtraction in sandstones, carbonates, shales and coal, *Fuel*, 154, 167–173, doi:10.1016/j.fuel.2015.03.046, 2015.
- 505 Menke, H., Gao, Y., Linden, S. and Andrew, M.: Using nano-XRM and high-contrast imaging to inform micro-porosity permeability during Stokes-Brinkman single and two-phase flow simulations on micro-CT images, preprint, *EarthArXiv.*, 2019.
- Moosmann, J., Ershov, A., Weinhardt, V., Baumbach, T., Prasad, M. S., LaBonne, C., Xiao, X., Kashef, J. and Hofmann, R.: Time-lapse X-ray phase-contrast microtomography for in vivo imaging and analysis of morphogenesis, *Nat Protoc*, 9(2), 294–304, doi:10.1038/nprot.2014.033, 2014.
- 510 Moulinec, H. and Suquet, P.: A FFT-Based Numerical Method for Computing the Mechanical Properties of Composites from Images of their Microstructures, in *IUTAM Symposium on Microstructure-Property Interactions in Composite Materials*, vol. 37, edited by R. Pyrz, pp. 235–246, Springer Netherlands, Dordrecht., 1995.
- Münch, B. and Holzer, L.: Contradicting Geometrical Concepts in Pore Size Analysis Attained with Electron Microscopy and Mercury Intrusion, *Journal of the American Ceramic Society*, 91(12), 4059–4067, doi:10.1111/j.1551-2916.2008.02736.x, 2008.
- 515 Neale, G. and Nader, W.: Practical significance of brinkman’s extension of darcy’s law: Coupled parallel flows within a channel and a bounding porous medium, *Can. J. Chem. Eng.*, 52(4), 475–478, doi:10.1002/cjce.5450520407, 1974.
- Okabe, H. and Blunt, M. J.: Prediction of permeability for porous media reconstructed using multiple-point statistics, *Phys. Rev. E*, 70(6), 066135, doi:10.1103/PhysRevE.70.066135, 2004.
- 520 Peng, S., Hu, Q., Dultz, S. and Zhang, M.: Using X-ray computed tomography in pore structure characterization for a Berea sandstone: Resolution effect, *Journal of Hydrology*, 472–473, 254–261, doi:10.1016/j.jhydrol.2012.09.034, 2012.
- Peng, S., Marone, F. and Dultz, S.: Resolution effect in X-ray microcomputed tomography imaging and small pore’s contribution to permeability for a Berea sandstone, *Journal of Hydrology*, 510, 403–411, doi:10.1016/j.jhydrol.2013.12.028, 2014.
- 525 Pittman, E. D. and Thomas, J. B.: Some Applications of Scanning Electron Microscopy to the Study of Reservoir Rock, *Journal of Petroleum Technology*, 31(11), 1375–1380, doi:10.2118/7550-PA, 1979.
- Prill, T., Schladitz, K., Jeulin, D., Faessel, M. and Wieser, C.: Morphological segmentation of FIB-SEM data of highly porous media: MORPHOLOGICAL SEGMENTATION OF FIB-SEM DATA OF HIGHLY POROUS MEDIA, *Journal of Microscopy*, 250(2), 77–87, doi:10.1111/jmi.12021, 2013.
- 530

- Saxena, N., Hofmann, R., Alpak, F. O., Berg, S., Dietderich, J., Agarwal, U., Tandon, K., Hunter, S., Freeman, J. and Wilson, O. B.: References and benchmarks for pore-scale flow simulated using micro-CT images of porous media and digital rocks, *Advances in Water Resources*, 109, 211–235, doi:10.1016/j.advwatres.2017.09.007, 2017.
- 535 Saxena, N., Hows, A., Hofmann, R., O. Alpak, F., Freeman, J., Hunter, S. and Appel, M.: Imaging and computational considerations for image computed permeability: Operating envelope of Digital Rock Physics, *Advances in Water Resources*, 116, 127–144, doi:10.1016/j.advwatres.2018.04.001, 2018.
- Shah, S. M., Gray, F., Crawshaw, J. P. and Boek, E. S.: Micro-computed tomography pore-scale study of flow in porous media: Effect of voxel resolution, *Advances in Water Resources*, 95, 276–287, doi:10.1016/j.advwatres.2015.07.012, 2016.
- 540 Soulaire, C., Gjetvåg, F., Garing, C., Roman, S., Russian, A., Gouze, P. and Tchelepi, H. A.: The Impact of Sub-Resolution Porosity of X-ray Microtomography Images on the Permeability, *Transp Porous Med*, 113(1), 227–243, doi:10.1007/s11242-016-0690-2, 2016.
- Spanne, P., Thovert, J. F., Jacquin, C. J., Lindquist, W. B., Jones, K. W. and Adler, P. M.: Synchrotron Computed Microtomography of Porous Media: Topology and Transports, *Phys. Rev. Lett.*, 73(14), 2001–2004, doi:10.1103/PhysRevLett.73.2001, 1994.
- 545 Tinetti, A.-J., Corlay, Q., Collon, P., Golfier, F., Kalo, K.: Comparison of various 3D pore space reconstruction methods and implications on transport properties of nanoporous rocks, *Advances in Water Resources*, 141, doi:10.1016/j.advwatres.2020.103615, 2020.
- Ufer, K., Kleeberg, R., Bergmann, J. and Dohrmann, R.: Rietveld Refinement of Disordered Illite-Smectite Mixed-Layer Structures by a Recursive Algorithm. II: Powder-Pattern Refinement and Quantitative Phase Analysis, *Clays Clay Miner.*, 50(5), 535–552, doi:10.1346/CCMN.2012.0600508, 2012.
- 550 Villiéras, F., Michot, L. J., Bardot, F., Cases, J. M., François, M. and Rudziński, W.: An Improved Derivative Isotherm Summation Method To Study Surface Heterogeneity of Clay Minerals [†], *Langmuir*, 13(5), 1104–1117, doi:10.1021/la9510083, 1997.
- Washburn, E. W.: The Dynamics of Capillary Flow, *Phys. Rev.*, 17(3), 273–283, doi:10.1103/PhysRev.17.273, 1921.
- 555 Wilson, M. D. and Pittman, E. D.: Authigenic Clays in Sandstones: Recognition and Influence on Reservoir Properties and Paleoenvironmental Analysis, *SEPM JSR*, Vol. 47, doi:10.1306/212F70E5-2B24-11D7-8648000102C1865D, 1977.
- Worden, R. H. and Morad, S.: Clay Minerals in Sandstones: Controls on Formation, Distribution and Evolution, in *Clay Mineral Cements in Sandstones*, edited by R. H. Worden and S. Morad, pp. 1–41, Blackwell Publishing Ltd., Oxford, UK., 1999.
- 560 Yoon, H. and Dewers, T. A.: Nanopore structures, statistically representative elementary volumes, and transport properties of chalk: NANOPORE STRUCTURES, SREV, AND FIB-SEM, *Geophys. Res. Lett.*, 40(16), 4294–4298, doi:10.1002/grl.50803, 2013.
- Zhang, D., Zhang, R., Chen, S. and Soll, W. E.: Pore scale study of flow in porous media: Scale dependency, REV, and statistical REV, *Geophys. Res. Lett.*, 27(8), 1195–1198, doi:10.1029/1999GL011101, 2000.

565 Zhao, H., Ning, Z., Wang, Q., Zhang, R., Zhao, T., Niu, T. and Zeng, Y.: Petrophysical characterization of tight oil reservoirs using pressure-controlled porosimetry combined with rate-controlled porosimetry, *Fuel*, 154, 233–242, doi:10.1016/j.fuel.2015.03.085, 2015.