

# Kinematics and extent of the Piemont-Liguria Basin – implications for subduction processes in the Alps

Eline Le Breton<sup>1</sup>, Sascha Brune<sup>2,3</sup>, Kamil Ustaszewski<sup>4</sup>, Sabin Zahirovic<sup>5</sup>, Maria Seton<sup>5</sup>, R. Dietmar Müller<sup>5</sup>

5

<sup>1</sup>Department of Earth Sciences, Freie Universität Berlin, Germany

<sup>2</sup>Geodynamic Modelling Section, German Research Centre for Geosciences, GFZ Potsdam, Germany

<sup>3</sup>Institute of Geosciences, University of Potsdam, Potsdam, Germany

<sup>4</sup>Institute for Geological Sciences, Friedrich-Schiller-Universität Jena, Germany

10 <sup>5</sup>EarthByte Group, School of Geosciences, The University of Sydney, NSW 2006, Australia

*Correspondence to:* Eline Le Breton ([eline.lebreton@fu-berlin.de](mailto:eline.lebreton@fu-berlin.de))

**Abstract.** Assessing the size of a former ocean, of which only remnants are found in mountain belts, is challenging but crucial to understand subduction and exhumation processes. Here we present new constraints on the opening and width of the Piemont-Liguria (PL) Ocean, known as the Alpine Tethys together with the Valais Basin. We use a regional tectonic reconstruction of the Western Mediterranean-Alpine area, implemented into a global plate motion model with lithospheric deformation, and 2D thermo-mechanical modelling of the rifting phase to test our kinematic reconstructions for geodynamic consistency. Our model fits well with independent datasets (i.e. ages of syn-rift sediments, rift-related fault activity and mafic rocks) and shows that, between Europe and northern Adria, the PL Basin opened in four stages: (1) Rifting of the proximal continental margin in Early Jurassic (200-180 Ma), (2) Hyper-extension of the distal margin in Early-Middle Jurassic (180-165 Ma), (3) Ocean-Continent Transition (OCT) formation with mantle exhumation and MORB-type magmatism in Middle-Late Jurassic (165-154 Ma), (4) Break-up and mature oceanic spreading mostly in Late Jurassic (154-145 Ma). Spreading was slow to ultra-slow (max. 22 mm/yr, full rate) and decreased to ~ 5 mm/yr after 145 Ma while completely ceasing at about 130 Ma due to motion of Iberia relative to Europe during the opening of the North Atlantic. The final width of the PL mature (“true”) oceanic crust reached a maximum of 250 km along a NW-SE transect between Europe and northwestern Adria. Plate convergence along that same transect reached 680 km since 84 Ma (420 km between 84-35 Ma, 260 km between 35-0 Ma), which exceeds largely the width of the ocean. We suggest that at least 63 % of the subducted and accreted material was highly thinned continental lithosphere and most of the Alpine Tethys units exhumed today derived from OCT zones. Our work highlights the significant proportion of distal rifted continental margins involved in subduction and exhumation processes and provides quantitative estimates for future geodynamic modelling and a better understanding of the Alpine Orogeny.

15  
20  
25  
30

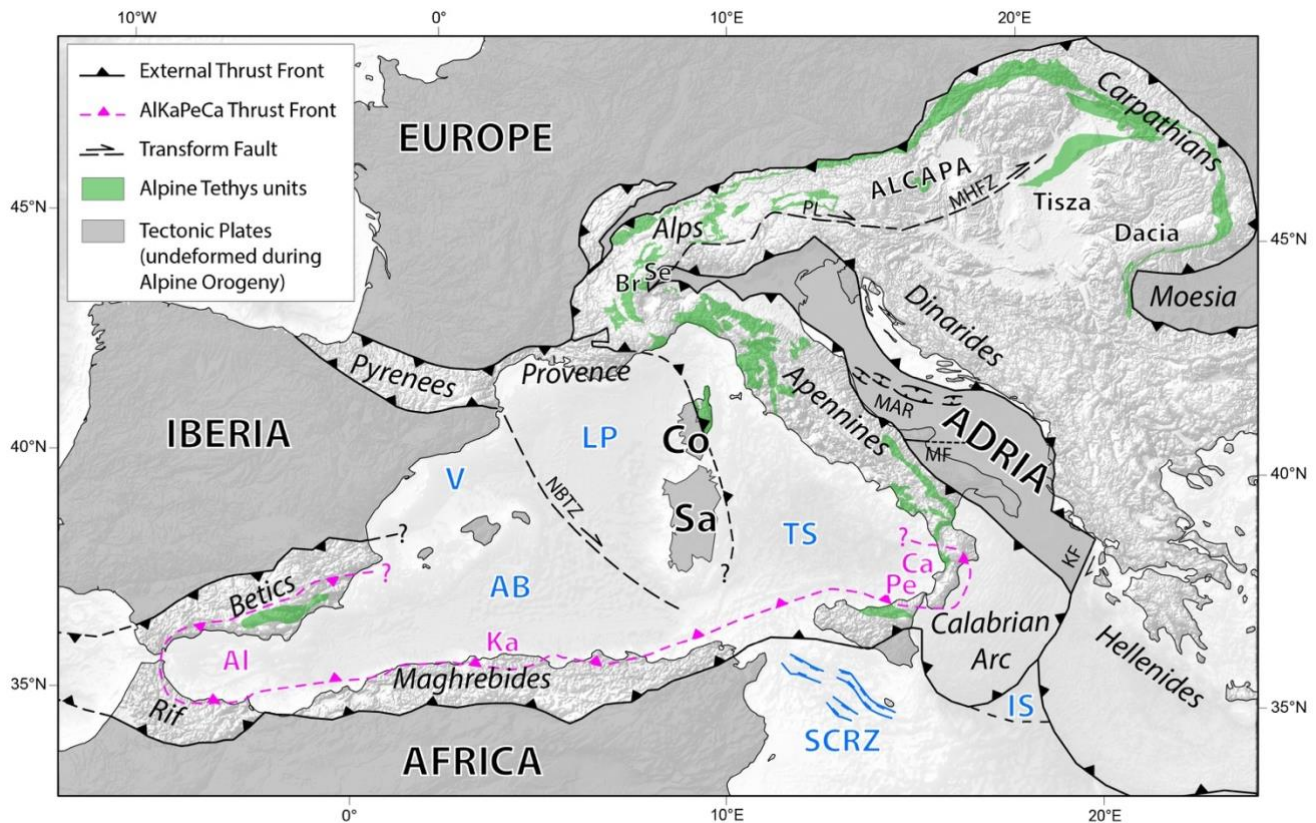
## 1 Introduction

Over the last decades, new concepts on rifting processes, subduction initiation, depth and exhumation of high-pressure rocks during subduction emerged. The Alps are a natural laboratory to test ideas as it preserved a detailed record of continental margin and ophiolite evolution from the Alpine Tethys that were accreted, or subducted to ultra-high pressure and later exhumed at the surface (Froitzheim and Eberli, 1990; Froitzheim and Manatschal, 1996; Bernoulli and Jenkyns, 2009; Mohn et al., 2010; Beltrando et al., 2014; Masini et al., 2014). Studies of hyper-extended magma-poor type of continental margins such as in the Alps have shed light on the tectonic complexities of distal and ocean-continental transition zones, along which various types of rocks such as granitoid basement within continental allochthons, serpentized mantle rocks, gabbros and basalts are put in contact by major detachment faults (e.g. Florineth and Froitzheim, 1994; Müntener and Hermann, 2001; Ferrando et al., 2004; Manatschal, 2004; Manatschal and Müntener, 2009; Epin et al., 2019). These zones of inherited weakness and thermal anomalies may represent ideal candidates for localization of subduction initiation when plate motion becomes convergent (Beltrando et al., 2010; Tugend et al., 2014; Stern and Gerya, 2018; Kiss et al., 2020; Zhou et al., 2020).

Moreover, the Alpine chain is enigmatic due to its very arcuate plate boundaries and switch of subduction polarity along strike (Figure 1), lack of a well-developed magmatic arc (e.g. McCarthy et al., 2018) and episodes of slab break-off (e.g. Wortel and Spakman, 2000; Handy et al., 2015). Seismic tomography models beneath the Alps are thus difficult to interpret (see Kästle et al., 2020 for a recent review). Thermo-mechanical modelling is a key tool to gain a better understanding of orogenic processes in the Alps (e.g. Gerya et al., 2002; Yamato et al., 2007; Duretz et al., 2011; Ruh et al., 2015; Reuber et al., 2016; Spakman et al., 2018; Dal Zilio et al., 2020) and potentially a better interpretation of seismic tomography models. These geodynamic models require, however, quantitative input such as estimates of the former extent and thickness of the continental margins and oceanic domains involved in subduction, paleo-location of plate boundaries through time, as well as direction and rate of plate convergence. Kinematic reconstructions are thus crucial, but challenging in such a tectonically complex area. First, regional geological reconstructions need to be globally connected and brought into a plate-mantle reference frame in order to assess mantle-plate-surface interactions through time (e.g. Müller et al., 2019). Second, there is growing debate that maximal burial depth of metamorphic rocks in subduction zones, as estimated from mineral phase equilibria and assuming lithostatic pressure, may be overestimated due to local overpressure and change of tectonic regime (Ford et al., 2006; Schmalholz and Podladchikov, 2013; Pleuger and Podladchikov, 2014; Reuber et al., 2016; Yamato and Brun, 2017; Moulas et al., 2019). This has significant implications for regional tectonic reconstructions that use an inferred amount of subduction based on peak depths of (ultra) high-pressure metamorphism (e.g. Schmid et al., 1996; Handy et al., 2010, 2015) and for conceptual models of exhumation of high-pressure rocks (e.g. Brun and Faccenna, 2008).

The past extent and size of the Piemont-Liguria (PL) Ocean and its rifted margins, prior to the formation of the Alps, remain poorly constrained. Studies based on the age range of mafic rocks derived from the PL Ocean in the Alps and inferring ultra-

slow spreading rates, propose a final extent ranging between 300 km (Li et al., 2013; Manzotti et al., 2014) and 500 km  
65 (Froitzheim and Manatschal, 1996; their Figure 3) for the oceanic domain, but lack kinematic constraints. Some kinematic  
models provide quantitative constraints on the amount of plate divergence, for example 450 km between Iberia-Adria to 675  
km between Europe-Adria in Vissers et al. (2013; their Figure 7), and from c. 500 km between Europe-Adria to c. 900 km  
between Sardinia-Adria in Handy et al. (2010; their Figure 8b). However, those estimates do not distinguish between extended  
70 continental and oceanic domains. Thus, the aim of this paper is to provide robust kinematic constraints and address the question  
of how wide the PL Ocean and its rifted margin were, which is crucial to understand slab pull forces, rollback and exhumation  
of high pressure rock in the Alps. We furthermore discuss the style of rifting and extent of hyper-extended rifted margins  
versus mature oceanic domain (i.e. “true” oceanic, not transitional crust) that went into subduction during the formation of the  
Western-Central Alps. For this, we present one possible kinematic scenario for this area, based on a compilation of previously  
published models and an updated model for the past motion of Corsica-Sardinia. This regional reconstruction goes back to  
75 Triassic time and is implemented within the recent global plate model of Müller et al. (2019). Furthermore, we test this  
kinematic scenario for geodynamic consistency with thermo-mechanical modelling of the rifting phase and compare our results  
with existing geological records from the Alps.



80 Figure 1. Simplified tectonic map of the Western-Central Mediterranean (modified after Le Breton et al., 2017; Michard et al., 2006; Guerrero et al., 2019; Schmid et al., 2020). Location of Mattinata Fault (MF) from (Argnani et al., 2009). Background topographic-bathymetric map from ETOPO1 model (Amante and Eakins, 2009). Abbr.: AB: Algerian Basin, Al - Alboran, AlCaPa - Alpine-Carpathians-Pannonian Mega-Unit, Br - Briançonnais, Ca - Calabria, Co - Corsica, V - Gulf of Valencia, Ka - Kabylides, IS - Ionian Basin, KF: Kefalonia Fault; LP - Liguro-Provençal Basin, MAR Mid-Adriatic Ridge, MHFZ: Mid-Hungarian Fault Zone, MT: Mattinata Fault; NBTZ - North Balearic Transform Zone, Pe - Peloritani, PL - Periadriatic Line, Sa - Sardinia, SCRZ - Sicily Channel Rift Zone, Se - Sesia, TS - Tyrrhenian Sea.

85

## 2 Geological Setting

The Alpine-Mediterranean belt results from a complex tectonic evolution that involved the closure of two oceans (Alpine Tethys and Neo-Tethys) and subduction-collision of several continental domains (Briançonnais, Sesia, AlCaPa, Tisza, Dacia, Figure 1) between two major plates Eurasia and Africa that have been converging since Cretaceous time (e.g. Dewey et al., 1989). The Adriatic plate (Adria) is a key player due to its central position between Eurasia and Africa. Today, Adria is surrounded by orogens; the Alps to the north where Adria is the upper indenting plate, the Dinarides to the east and the Apennines to the west where Adria is the subducting lower plate (Figure 1). It is bounded to the south by the accretionary prism of the Calabrian Arc and the Kefalonia Fault (KF on Figure 1).

90

95

The Alps contain the remains of two Jurassic- to Cretaceous-age basins (Piemont-Liguria and Valais) together referred to as the Alpine Tethys (e.g., Stampfli, 1998; Figure 1), or, more recently, also as “Alpine Atlantic” to emphasize its kinematic link with the Atlantic Ocean (Gawlick and Missoni, 2019). Here, however, we adopt the well-established term Alpine Tethys. In  
100 Cretaceous and Cenozoic times, the former Adriatic continental margin was accreted to the upper plate of the Alpine Orogen, represented today by the Austroalpine (part of “ALCAPA”, Figure 1) and Southern Alpine units (south of the Periadriatic Line, Figure 1). This upper plate also contains relics of an older ocean, the Neo-Tethys (also known as Meliata-Maliac-Vardar ocean; Channell and Kozur, 1997; Schmid et al., 2008, 2020). The closure of Neo-Tethys, whose remnants are abundantly found in the Dinarides (Vardar Ophiolites), initiated in the Middle to Late Jurassic (age of metamorphic soles; Maffione and  
105 van Hinsbergen, 2018), coevally with rifting and spreading of the PL Ocean (Stampfli et al., 1998; Schmid et al., 2008). In the following sections we will focus on the evolution of the Alpine Tethys and the Western-Central Alps. We note that remnants of the PL Ocean are also preserved in Miocene-to-Recent nappes of the Apennines (including Calabria), the Betic Cordillera and Rif (southern Spain and northern Morocco), and the Maghrebides (northern Africa), as shown in Figure 1 (AlKaPeCa units, Bouillin et al., 1986). Those nappes were emplaced during fast rollback of the subduction zone in the Cenozoic (e.g.  
110 Faccenna et al., 2001; Michard et al., 2002; Rosenbaum and Lister, 2004), triggering upper-plate extension and the opening of the Western Mediterranean basins (Algerian Basin, Gulf of Valencia, Liguro-Provençal Basin and Tyrrhenian Sea; Figure 1).

## **2.1 Opening of the Alpine Tethys**

### **2.1.1 The Piemont-Liguria Basin**

Tectono-stratigraphic, petrological, geochemical and geochronological constraints from the Alps indicate that the PL margin  
115 represents a fossil example of an hyper-extended magma-poor continental margin, such as the Iberian margin today (e.g. Manatschal and Bernoulli, 1999; Manatschal, 2004; Decarlis et al., 2015). A first phase of rifting of the proximal part of the continental margin, with horst-and-graben structures bounded by high-angle faults, breccia deposits and platform accumulations, took place in Early Jurassic (c. 200-180 Ma; e.g. Lemoine et al., 1986; Froitzheim, 1988; Froitzheim and Eberli, 1990; Conti et al., 1994; Froitzheim and Manatschal, 1996; Masini et al., 2013; Ribes et al., 2019). This was followed by  
120 necking of the continental lithosphere, with the development of crustal-scale extensional detachment faults (Mohn et al., 2012; Ribes et al., 2019), and hyper-extension of the distal part of the margin between c. 180 and 165 Ma, characterized by both low and high angle normal faults, detachment of continental allochthons and exhumation of mantle rocks (e.g. Froitzheim and Eberli, 1990; Froitzheim and Manatschal, 1996; Masini et al., 2013; Ribes et al., 2019). Transects across the proximal to distal parts of the former Adriatic margin are well preserved in the Southern Alps and Austroalpine units of the Central-Eastern Alps  
125 (Mohn et al., 2012, their Figure 2; Ribes et al., 2019). For example, in the Central Alps, record of the proximal Adriatic margin is observed within the Ortler and Ela units, the necking domain within the Campo-Grosina and Languard units, the hyper-extended domain within the Bernina and Err units, and the exhumed mantle domain within the upper and lower Plata units (Froitzheim and Manatschal, 1996; Mohn et al., 2010; Ribes et al., 2019).

130 Radiolarite sedimentation started at around  $166 \pm 1$  Ma (Bill et al., 2001) covering both oceanic rocks and adjacent distal  
margins, which suggests post-rift sedimentation and used to be interpreted as continental breakup around that time. However,  
(Ribes et al., 2019) showed a diachroneity in the post-rift sedimentation, younging from the proximal to the distal exhumed  
mantle domain of the passive margin system. Indeed, extension related to final rifting in the most distal part of magma-poor  
margin along the ocean–continent transition (OCT) often leads to juxtaposition of extremely diverse types of rock such as  
135 slices of continental crust in contact with exhumed serpentized mantle, pelagic sediments as well as gabbros and basalts (e.g.  
(Florineth and Froitzheim, 1994; Froitzheim and Manatschal, 1996; Hermann and Müntener, 1996; Marroni et al., 1998;  
Müntener and Hermann, 2001; Ferrando et al., 2004; Manatschal et al., 2006; Manatschal and Müntener, 2009; Epin et al.,  
2019; Ribes et al., 2020). Some Alpine Tethys Ophiolites are interpreted as representing former OCT rather than the mature  
PL Ocean, due to the presence of exhumed mantle and detachment faults associated with tectono-sedimentary breccias  
140 (Manatschal and Müntener, 2009). U-Pb ages on zircons from MORB-type gabbros and plagiogranites from Corsica, the  
Northern Apennines and the Alps give a range from c. 165 to 140 Ma (Bortolotti and Principi, 2005; Manatschal and Müntener,  
2009; their Figure 6 and references therein), dating both the OCT formation and mature oceanic spreading. The juxtaposition  
of pillow-lavas directly on mantle rocks and the lack of sheeted dykes in the Alpine Tethys Ophiolites (e.g. Barrett and Spooner,  
1977; Lagabriele and Cannat, 1990; Lagabriele and Lemoine, 1997; Decrausaz et al. 2021) indicate an ultra-slow type of  
145 spreading for the PL Ocean.

Parts of the continental European margin are preserved in the Alps within the Helvetic and Penninic nappes. Another extended  
continental unit, the Briançonnais, was that detached from Europe during the opening of another basin: the Valais Basin.

### **2.1.2 The Valais Basin**

150 The opening of the Valais Basin separated the Briançonnais continental unit from the European Plate (e.g. Stampfli, 1993).  
This is supported by the Early Cretaceous tectono-stratigraphic record between the Briançonnais and Valais domains (Florineth  
and Froitzheim, 1994) and the so-called “Valaisan trilogy” (Trümpy, 1951, 1954; Loprieno et al., 2011) whose oldest  
stratigraphic unit (Aroley Fm) is dated to Barremian-Aptian (130-110 Ma).

155 Based on U/Pb zircon dating on metabasic rocks of the Valais domain, Liati et al. (2005) and Liati and Froitzheim (2006)  
proposed that the Valais Basin was floored by two generations of oceanic crust and resulted from “re-rifting” of oceanic crust  
that first formed during the opening of the PL Ocean at about 165-155 Ma and secondly during the opening of the Valais  
Ocean at about 93 Ma. The existence of a Valais “Ocean” was, however, disputed by Masson et al. (2008) who dated the  
ophiolites of this domain to Early Carboniferous (U/Pb age). Beltrando et al. (2007) showed also evidence for Permian U/Pb  
160 zircon ages with only a few Cretaceous ages (110-100 Ma) in the rims of some zircons, interpreted as a thermal/fluid event  
related to extension rather than spreading. Characteristics of hyper-extended margin and OCT zone, with mantle exhumation

and limited magmatic activity within the Valais Basin was later described by Beltrando et al. (2012). Moreover, the presence of significant sedimentation pre-dating the onset of the Valaisan trilogy (Loprieno et al., 2011; Beltrando et al., 2012) confirmed the hypothesis of a multi-stage opening, as proposed by Liati et al. (2005).

165 Following these observations, we conclude that the Valais Basin was not a mature oceanic basin but a re-rifted, hyper-extended continental margin with exhumed mantle and a few magmatic rocks (OCT zone), that rifted away from Europe first during the opening of the PL Basin in Jurassic but mainly during the Cretaceous. Late Aptian-Albian extensional basins, with turbiditic and basinal series, including olistoliths and breccias, associated with sinistral fault zones are also recorded in Provence (e.g. Joseph et al., 1987; Montenat et al., 2004) and in the Pyrenees (e.g. Debroas, 1990; Choukroune, 1992). The potential kinematic  
170 link between rifting in the Pyrenees-Provence area and the Valais Basin in the Cretaceous is discussed in Section 3.

## 2.2 Closure of the Alpine Tethys

Following tectono-stratigraphic and geochronological studies on syn-orogenic sediments, high-pressure metamorphic rocks and thrust sheets in the Alps (e.g. Froitzheim et al., 1996; Stampfli et al., 1998; Schmid et al., 2008; Handy et al., 2010, 2015), the closure of the Alpine Tethys can be summarized in three stages:

175 (1) Nappe stacking of continental units and high-pressure metamorphism was first recorded in the Eastern Alps, indicating an intracontinental subduction zone within Adria (Austroalpine unit, part of “AlCaPa”; Stüwe and Schuster, 2010), which developed possibly along late Jurassic strike-slip faults connected to the western termination of the Neo-Tethys Ocean (Schuster and Frank, 1999; Frank and Schlager, 2006). This phase corresponds to the “Eo-Alpine” Orogeny and lasted between c. 130- 84 Ma (Faupl and Wagreich, 1999), as indicated by both synorogenic clastics (Rossfeld Formation; Faupl and  
180 Tollmann, 1979) and geochronological data on high-pressure metamorphic rocks within the Austroalpine units of the Eastern Alps (e.g. Thöni, 2006; Manzotti et al., 2014, their Figure 5 and references therein). Regional scale sinistral strike-slip faults offsetting Austroalpine units were also active during Cretaceous time and were potentially related to the opening of the North Atlantic and subsequent motion of Iberia relative to Europe (Neubauer et al., 1995; Sieberer & Ortner, 2020).

(2) South/Southeast-directed “Alpine” subduction of the PL Ocean, the Valais Basin and the distal European continental  
185 margin followed from c. 84 to 35 Ma. The subduction initiated at the Adriatic margin (Sesia, c. 85-65 Ma) and progressed from SE to NW across the PL ocean (c. 50-45 Ma), the Briançonnais (c. 45-42 Ma) and Valais Basin (c. 42-35 Ma) as indicated by the tectono-metamorphic evolution of those units (e.g. Rubatto et al., 1998; Manzotti et al., 2014, 2018; Handy et al. 2010). The subduction phase is also dated by syn-orogenic trench fill (flysch) sediments, which began at c. 94-86 Ma in the PL Ocean, c. 70 Ma in the Valais Basin and ended at c. 32-35 Ma (Matter et al., 1980). Relics of this “Alpine” subduction and high-  
190 metamorphic rocks with ages ranging from 84 Ma (Lahondère and Guerrot, 1997) to 35 Ma (Martin et al., 2011) are also found in NE Corsica (“Alpine” Corsica, Figure 1; Molli, 2008). North of Corsica, East-West trending thrusts and folds, associated with syn-tectonic foreland sedimentation also started in the uppermost Santonian (c. 83 Ma) in Provence (e.g. Espurt et al.,

2012) and continue till the Eocene (e.g. Lacombe and Jolivet, 2005; Andreani et al., 2010). This shortening phase in Provence is related to the formation of the Pyrenees to the west, which initiated at about 83 Ma (e.g. Mouthereau et al., 2014).

195 (3) Collision in the Alps and “Apenninic” rollback subduction of the remaining PL Ocean and Ionian Basin initiated at about 35 Ma. The exact timing of onset of collision in the Alps differs depending on the criteria used. For instance, continental units, such as the above mentioned Briançonnais, entered the trench and were subducted prior to 35 Ma. However, here we distinguish continental subduction, in which rifted and thinned continental lithosphere behaves similarly to oceanic lithosphere, from continental collision, where slab pull is out-weighted by the positive buoyancy of the (less rifted) continental lithosphere  
200 following slab break-off and detachment of the subducted lithosphere. Timing of slab break-off in the Alps is inferred from timing of magmatism along the Periadriatic Line, mainly between 34-28 Ma (Rosenberg, 2004). Indeed, the geochemistry of these magmatic rocks indicates melting of lithospheric mantle, best explained by a slab break-off event (von Blanckenburg and Davies, 1995). Moreover, this time period (35-30 Ma) is also marked by a change in sedimentation from “Flysch” to “Molasse” (Rupelian Lower Marine Molasse, 33.9-28.1 Ma) in the Alpine Foreland Basin (Matter et al., 1980; Sinclair, 1997),  
205 and onset of medium temperature – medium pressure Barrovian-type metamorphism within the orogen (Lepontine dome, Tauern Dome; e.g. Bousquet et al., 2008) attributed to thickening of the European crust (Venediger Duplex formation in the Tauern Window; Scharf et al., 2013b). Thus, 35 Ma appears to be a reasonable time for onset of collision in the Alps, as defined above.

In Provence, Oligocene extensional tectonics started at about 35 Ma in response to rollback of the “Apenninic” subduction  
210 (e.g. Séranne, 1999). In the Carpathians, the eastward continuation of the Alps, eastward retreat of the subduction began in early Miocene time (e.g. Horváth et al., 2006) contemporaneously to collision of the Adriatic Plate with Europe and lateral extrusion in the Eastern Alps (e.g. Ratschbacher et al., 1991; Scharf et al., 2013a). Rollback subduction was compensated by upper-plate extension (Pannonian Basin) and arcuation (Ustaszewski et al., 2008), and involved little convergence between Europe and Adria (Royden and Burchfiel, 1989).

215

### **3 Kinematic reconstructions of the Alpine-Mediterranean area**

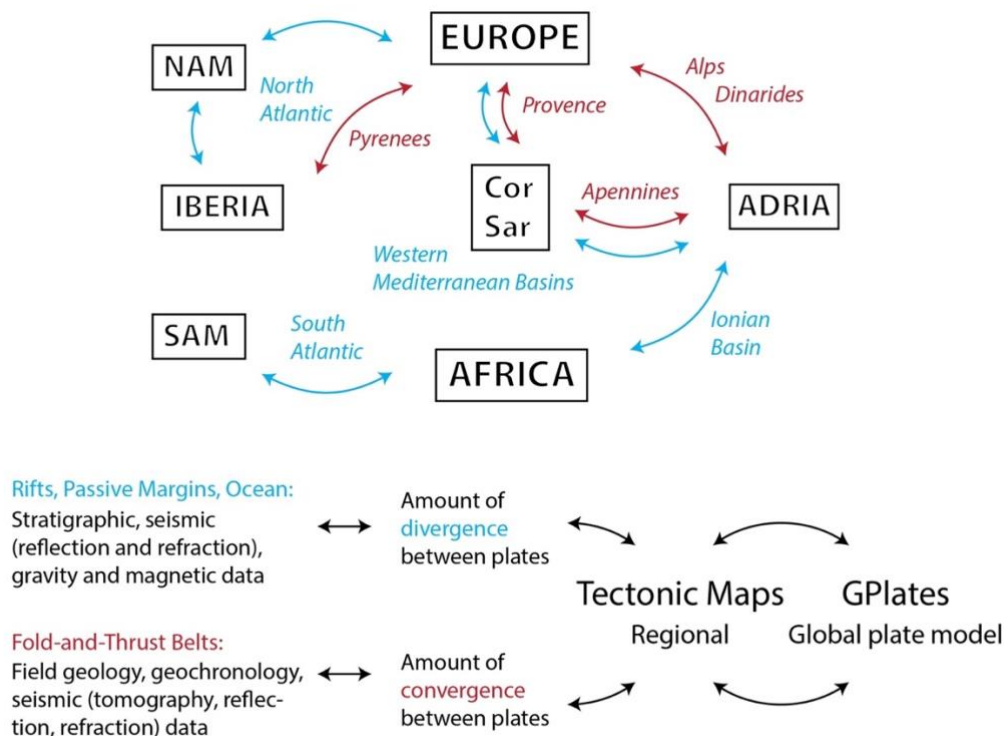
#### **3.1 Approach**

Reconstructing the past motion of the Alpine-Mediterranean area is challenging due to the broad deformation, especially around the Adriatic Plate (Figure 1). Our approach is thus to reconstruct the tectonic deformation that affected the plates during  
220 the Alpine Orogeny, with a focus on Adria and Sardinia-Corsica, to quantify the amount of divergence and convergence between stable parts of each plates, i.e. those not deformed during the Alpine Orogeny (in grey on Figure 1). To do so, we compile existing kinematic reconstructions and geological-geophysical data from the surrounding orogens (Alps, Provence, Apennines, Dinarides) and basins (Western Mediterranean Basins, Ionian Sea; Figure 2; see more details on the method in Le Breton et al., 2017 for Neogene time). The motion of Europe, Iberia and Africa is obtained from previously published



225 reconstructions that fit conjugate magnetic anomalies in the Atlantic and restore the rifting history of the continental margins. This step is crucial to provide a global frame for the regional reconstructions of the Alpine area. Major tectonic events are dated by syn-tectonic sediments, magmatic and metamorphic rocks, and magnetic anomalies in the Atlantic Ocean (magneto-  
230 [chronostratigraphy](https://www.gplates.org)), which allow us to draw tectonic maps at key times of the evolution of the Alpine Tethys (rifting and spreading) and Alpine Orogeny (subduction and collision). We then use GIS software (e.g. ArcGIS) and GPlates (<https://www.gplates.org>, Müller et al., 2018) to digitize the tectonic maps, calculate rotation poles when needed and obtain a kinematic model back to 200 Ma. Moreover, GPlates (version 2.2) has the functionality to build plate motion models with continuously evolving topologies for rigid and deforming plates, and to include deformation both within the plates and along their boundaries (Gurnis et al., 2012, 2018; Müller et al., 2019). We are thus able to model the evolution of the deforming Adriatic Plate and the strong arcuation of its boundaries especially during the fast slab rollback and trench retreat in Cenozoic  
235 times (Faccenna et al., 2001; Rosenbaum and Lister, 2004).

The workflow between the geological reconstructions (tectonic maps) and GPlates is based on an iterative approach (Figure 2). The tectonic reconstructions give us a range of possible amount of convergence/divergence between the plates and the kinematic reconstructions with GPlates allow us to visualize misfits in our tectonic reconstructions, i.e. overlaps between stable  
240 parts of the plates, and thus indicate “problematic” areas in our tectonic maps that should be further studied. This approach is a never-ending endeavor as new geological and geophysical data from the Alpine-Mediterranean and the Atlantic are constantly being produced and/or are the subject of debated interpretations. Thus, after a brief description of the existing debates and potential scenarios, we present our current “best-fit” model for the Western Mediterranean-Alpine area and the main assumptions on which it lies. Our regional model for the Western-Central Mediterranean is part of the global plate model  
245 of Müller et al. (2019) and all reconstructions and rotation files are available at [https://www.earthbyte.org/webdav/ftp/Data\\_Collections/Muller\\_etal\\_2019\\_Tectonics/](https://www.earthbyte.org/webdav/ftp/Data_Collections/Muller_etal_2019_Tectonics/).



250 **Figure 2. Approach and data used in this study to estimate the amount of deformation between plates in the Western-Central Mediterranean area and reconstruct their past plate motions within a global frame using GPlates. Abbr.: Cor – Corsica, NAM - North America, Sar – Sardinia, SAM - South America.**

### 3.2 Existing kinematic scenarios and debates

255 Due to the complexity of the Alpine-Mediterranean area and based on different datasets and assumptions, several kinematic scenarios back to Mesozoic time have been proposed (e.g. Le Pichon et al., 1988; Dewey et al., 1989; Srivastava et al., 1990; Rosenbaum et al., 2002; Stampfli and Borel, 2002; Handy et al., 2010; Schettino and Turco, 2011; Van Hinsbergen et al., 2020). A key player in the reconstruction of the Western Mediterranean Area is Iberia. Its exact position in Mesozoic time – prior to spreading and clear magnetic anomalies such as the Chron C34 (83.5 Ma; Macchiavelli et al., 2017) – is highly debated depending on the interpretation of paleomagnetic studies on land, magnetic anomalies in the Atlantic and geological-  
 260 geophysical data from the Pyrenees. Two end-member kinematic scenarios for the Mesozoic motion of Iberia have been proposed: (1) transtensional eastward motion of Iberia versus Europe (e.g. Le Pichon et al., 1988; Olivet, 1996; Stampfli and Borel, 2002; Jammes et al., 2009; Handy et al., 2010; Schettino and Turco, 2011; Barnett-Moore et al., 2018) and (2) scissor-style opening of the Bay of Biscay and rotation of Iberia in Lower Cretaceous time (Sibuet, 2004; Vissers and Meijer, 2012; Vissers et al., 2016a; van Hinsbergen et al., 2020). The main difference is that (1) implies transtension (or strike-slip followed

265 by orthogonal extension; Jammes et al. 2009), in the Pyrenees in Early Cretaceous, whereas (2) involves subduction and slab  
break-off in the Pyrenees during that same time period (130-110 Ma).

Another discussed topic is the potential kinematic link between the opening of the Bay of Biscay, the motion of Iberia and the  
opening of the Valais Basin along a major transtensional zone, which would follow the abovementioned end-member (1) for  
270 Iberia (e.g. Frisch, 1979; Stampfli, 1993; Stampfli and Borel, 2002; Handy et al., 2010). This kinematic link is mostly based  
on the synchronous time of opening of the Bay of Biscay (Tugend et al., 2014), sinistral transtensional deformation in the  
Pyrenees (Peybernés and Souquet, 1984; Choukroune, 1992; Oliva-Urcia et al., 2011; Canérot, 2017), in Provence (Bestani et  
al., 2015 and references therein), and the main opening phase of the Valais Basin (section 2.1.2) in Early Cretaceous time.  
Handy et al. (2010) furthermore proposed that this sinistral motion was kinematically linked further to the East to the Eo-  
275 Alpine Orogeny (c. 130-84 Ma; section 2.2). This view is however refuted by a model based on paleo-magnetic data from  
Sardinia, which indicates an independent rotation of Sardinia compared to Iberia (Advokaat et al., 2014). This led to propose  
an alternative kinematic scenario, in which Sardinia-Corsica remains close to its present-day location with respect to the  
European Plate, and the opening of the Valais is kinematically independent from the motion of Iberia (Van Hinsbergen et al.,  
2020).

280

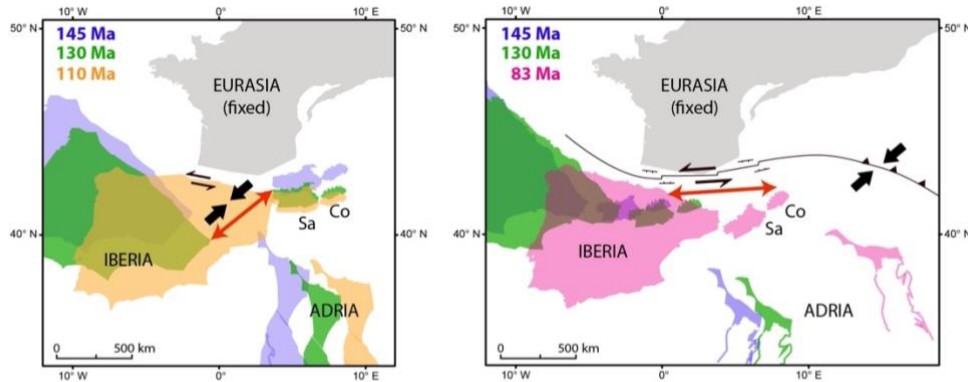
Complex late-stage rift processes along the magma-poor Iberian margin led to a wide continent-ocean transition zone and to  
debate on the nature of the M0 magnetic anomaly or “J”-anomaly in the North Atlantic (Bronner et al., 2011; Tucholke and  
Sibuet, 2012; Nirrengarten et al., 2017) used to constrain the motion of Iberia in a scissor-style way in Early Cretaceous (end-  
member model (2) for Iberia; Sibuet, 2004; Vissers and Meijer, 2012; van Hinsbergen et al., 2020). Additionally, the  
285 paleomagnetic dataset in Iberia that indicates a counter-clockwise rotation by 35° of Iberia in Early Cretaceous (Vissers and  
Meijer, 2012; van Hinsbergen et al., 2020) is subject of an active debate (Neres et al., 2012, 2013; see also discussion of  
Barnett-Moore et al., 2016, 2017 and van Hinsbergen et al., 2017). Most importantly, scissor-style motion of Iberia and the  
alternative model for Sardinia mentioned above (Advokaat et al., 2014; Van Hinsbergen et al., 2020) imply subduction in the  
Pyrenees but also of significant part of the PL Ocean between Iberia and Sardinia-Adria between 130-110 Ma (Figure 3 – 1.A).  
290 However, geological records in the Pyrenees, i.e. thick (up to 5 km) Albo-Cenomanian sedimentary fault-related basins  
(turbidites and breccias) later inverted during the Pyrenean Orogeny, as well as exhumation of (ultra)mafic rocks and  
Cretaceous alkali magmatism, all lead towards the interpretation of a rifting phase rather than subduction in Early Cretaceous  
time (e.g. Jammes et al., 2009; Clerc and Lagabrielle, 2014; Masini et al., 2014; Tugend et al., 2014). The transition from  
divergence to convergence is dated later by inversion of rift faults and syn-inversion growth strata of Late Santonian age (at  
295 around 84 Ma; e.g. McClay et al., 2004; Mouthereau et al., 2014), which fits with onset of Alpine subduction more to the east  
(section 2.2) and the Late Cretaceous age of syn-orogenic flysch sediments in the Alps (Matter et al., 1980) and Northern  
Apennines (Marroni et al., 1992).

Figure 3 summarizes what we name this “Iberia-Sardinia Problem” (Figure 3.1) and following the abovementioned geological  
300 record of transtension/extension in the Pyrenees and the absence of geological evidence for convergence between Iberia and  
Sardinia in Early Cretaceous, we favor the kinematic model involving sinistral transtensional motion between Europe and  
Iberia, linked to the opening of the Valais Basin and Eo-Alpine Orogeny to the east (Figure 3 – 1.B). We emphasize here that  
this motion is post-145 Ma (Tugend et al., 2014; Barnett-Moore et al., 2018) and thus does not influence the opening of the  
PL Basin, which occurs earlier in the Jurassic (section 2.1.1). The implications of a possible earlier phase of Jurassic rifting in  
305 the Pyrenees, as suggested from Jurassic ages of pyroxenites (Henry et al., 1998) and shear zones at Cap de Creus (Vissers et  
al., 2016b), is discussed in section 5.2.

310 **Figure 3 (next page). 1.** Contrasting paleo-reconstructions of Iberia and Sardinia-Corsica at 145 Ma (blue), 130 Ma (green), 110 Ma (orange)  
and 83 Ma (purple) relative to Eurasia: **1.A.** model in accordance with paleo-magnetic data (from van Hinsbergen et al. 2020) but implying  
more than 500 km convergence between Iberia and Sardinia in Lower Cretaceous (130 -110 Ma), of which there is no geological record;  
and **1.B.** alternative model considering Sardinia-Corsica as part of Iberian plate and implying up to 700 km strike-slip (transtensional) motion  
315 along the North Pyrenean Fault. In this model, the convergence relative to Eurasia is accommodated more to the East, along the Eo-Alpine  
Orogeny, as proposed *e.g.* by Handy et al. (2010). **2.** Contrasting paleo-reconstructions of Adria following model 1.B., at 200 Ma, prior to  
the opening of the Piedmont-Liguria Basin. The left model (2.A.) shows the “overlap” problem between northern and Sardinia-Corsica when  
reconstructing Adria as a single plate. This is solved in the right model (2.B.) by subdividing Adria in two plates along the Mattinata Fault  
(MF, Figure 1) as proposed by Schettino and Turco (2011). See text for further explanations. Abbr.: Al - Alboran, Ca - Calabria, Co - Corsica,  
Ka - Kabylides, Pe - Peloritani, Sa – Sardinia.

320

## 1 - The Iberia-Sardinia Problem



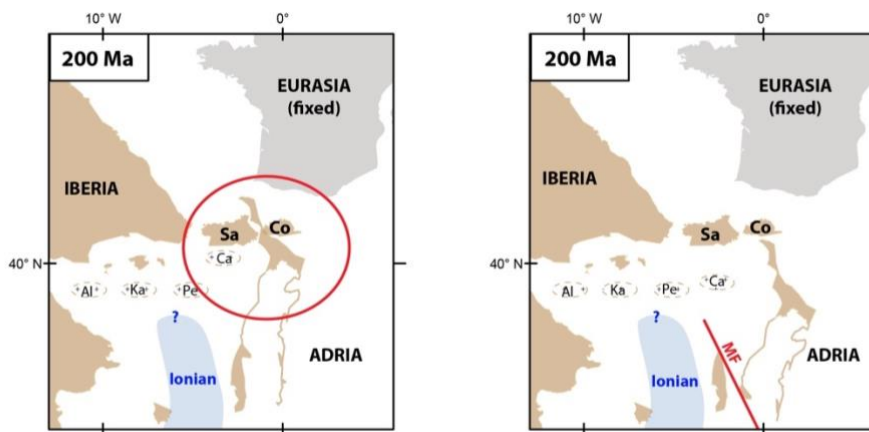
### 1.A. Sardinia-Corsica as part of European plate:

Model for Iberia and Sardinia in accordance with paleo-magnetic data (from van Hinsbergen et al. 2020)  
=> implies convergence between Iberia and Sardinia (500-700 km depending on kinematic model used for Iberia) mostly in Lower Cretaceous (130-100 Ma)

### 1.B. Sardinia-Corsica as part of Iberian plate:

Alternative model where motion of Iberia-Sardinia-Corsica accommodated by sinistral motion (up to 700 km between 145 and 84 Ma) and kinematically linked with opening of the Valais Basin and intra-continental Eo-Alpine orogeny within Adria to the East (as proposed e.g. by Handy et al., 2010)

## 2 - The Adria Problem



### 2.A. Adria - 1 single plate:

Overlap between Northern Adria and Corsica-Sardinia

### 2.B. Adria - 2 plates:

Split of Adria along Mattinata Fault (MF) to avoid overlap with Corsica-Sardinia  
=> Implies in return c. 230 km sinistral motion along MF in Cretaceous-Paleogene time (as proposed by Schettino & Turco, 2011)

## 3.3 Reconstructions of the Atlantic (Europe, Africa, Iberia)

325 The motion of Europe, Africa and Iberia is well constrained by the fit of conjugate magnetic anomalies that formed during sea-floor spreading along the mid-Atlantic ridge (Müller et al., 1997, 1999 for the fit of South and North Americas vs Africa;

Gaina et al., 2002 and Schettino and Scotese, 2005 for North America vs. Europe and Iberia, respectively). For the pre-breakup phase, the global plate model of Müller et al. (2019) is built on the reconstructions of Kneller et al. (2012) for the Central Atlantic, Heine et al. (2013) for the South Atlantic and Barnett-Moore et al. (2018) for the North Atlantic. Those models are based on structural restoration of the conjugate Atlantic margins using the rift basins architecture and present-day crustal thickness to approximate the amount and direction of extension, and also of intracontinental rift basins in Africa and South America (Heine et al., 2013). We note that the model used for Iberia (Barnett-Moore et al., 2018) follows the favored model of transtensional motion rather than subduction between Iberia and Europe in Early Cretaceous (see section 2.3).

### 3.4 Reconstructions of Adria, Sardinia-Corsica

Another key player in the geodynamic evolution of the Alpine-Mediterranean area is the past motion of the Adriatic Plate (Adria). In most models, Adria is considered as a “promontory” of Africa (Channell et al., 1979) and thus is restored as moving together with Africa, since the end of opening of the Ionian Basin. The kinematics and opening of this basin are difficult to constrain, as most of it was lost to subduction and the small remaining portion is covered by the Calabrian accretionary prism today (Figure 1). Seismic refraction and reflection data indicate that the Ionian basin is floored by oceanic crust (Dannowski et al., 2019) and magnetic anomalies indicate an early Mesozoic age of spreading (220-230 Ma; Speranza et al., 2012). Handy et al. (2010), using tectonic reconstructions of the Alps, proposed an independent motion of the Adriatic Plate since 84 Ma, which in return would imply significant deformation in the Ionian Basin. However, there is no geological evidence for such deformation within this basin. Only the Sicily Channel Rift Zone (SCRZ, Figure 1) records an extensional event and accommodates some divergence between Africa and Adria, but only in Neogene time and of limited amount (30 km minimum along the Pantelleria Rift, CROP M25; Civile et al., 2010; Le Breton et al., 2017). Moreover, this extensional phase might not be directly related to plate kinematics but rather to dynamics of the subducted African slab (Argnani, 2009).

The Neogene tectonic evolution of Adria and Sardinia-Corsica is constrained by reconstructing the amount of convergence along fold-and-thrust belts (Apennines, Alps, Dinarides for Adria; Provence for Sardinia-Corsica) and coeval divergence along extensional basins (Liguro-Provençal and Tyrrhenian basins, Sicily Channel Rift Zone) (Le Breton et al., 2017). Those reconstructions show that Adria had a slightly independent motion from Africa and rotated counter-clockwise of about 5° relative to Europe since 20 Ma. As mentioned above, the Ionian Basin between Africa and Adria is oceanic (seismic velocities; Dannowski et al., 2019) and opened in the Triassic (220-230 Ma based on magnetic anomalies; Speranza et al., 2012). Thus, our main assumption is to avoid any significant convergence or divergence between Adria and Africa between the end of spreading (220 Ma) and the Neogene (20 Ma). We note that Tugend et al. (2019) recently suggested a Jurassic phase of opening for the Ionian Basin, which will be discussed in section 5.2.

The motion of the Corsica-Sardinia Block (CSB) in Oligo-Miocene times is associated with the opening of the Liguro-Provençal Basin during the fast retreat of the Apenninic subduction zone (e.g. Faccenna et al., 2001). Syn-rift and post-rift

360 sediments along the Gulf of Lion date the onset of rifting at about 35 Ma and end of rifting at about 21 Ma (Séranne, 1999; Jolivet et al., 2015). Paleomagnetic data indicates a clear rotation of Sardinia between 21 and 16 Ma (Speranza et al., 2002; Gattacceca et al., 2007) which is interpreted as spreading along the Liguro-Provencal Basin. We reconstructed the motion of Corsica relative to France back to 35 Ma using the amount of extension along the Liguro-Provencal Basin estimated to c. 115 km (c. 60 km rifting and 55 km spreading; Le Breton et al. 2017). This fits very well with the rotation pole and amount of rotation proposed by Speranza et al. (2002, Table 1) for Sardinia based on paleomagnetic data.

365

The pre-Oligocene evolution of the CSB and its position with respect to Iberia is debated, as mentioned in section 3.2. Here we follow the kinematic model where the CSB was part of Iberia and moved to its present-day location during a sinistral, transtensional motion of Iberia and opening of the Valais Basin in Early Cretaceous time (Figure 3 - 1.B; e.g. Stampfli and Borel, 2002; Handy et al., 2010). Indeed, the Oligo-Miocene rotation of the CSB during the opening of the Liguro-Provencal Basin implies the presence of a transform fault between Iberia and Sardinia, the North Balearic Transform Zone (NBTZ; e.g. van Hinsbergen et al., 2014) but there is no evidence for any shortening between Eastern Spain and Sardinia. Thus, our approach is to avoid significant divergence-convergence between Iberia and the CSB and therefore to move them together relative to Europe prior to 35 Ma. We implement a strike-slip motion between Iberia and the CSB along the NBTZ to accommodate extension during the opening of the Pyrenean Rift System - Valais Basin in Mesozoic time (Table 1) and convergence in the Pyrenees-Provence belt (c. 155 km between Sardinia and Provence; Bestani et al., 2016). This independent motion may explain, at least in part, the different rotation of the CSB compared to Iberia indicated by paleomagnetic studies (Advokaat et al., 2014) without having a significant paleogeographic separation between the two domains.

Moving the CSB with Iberia back in Mesozoic time is also in agreement with Carboniferous-Permian paleo-reconstructions of Tuscany, Calabria and Corsica that indicate a paleogeographic continuity between these three domains (Molli et al., 2020) and of the Western Alps that indicate a paleogeographic separation between the External Crystalline Massifs (Helvetic Zone, Europe) and the Briançonnais Zone (different pre-Triassic basement; Ballèvre et al., 2018). This implies in return significant strike-slip motion (max. 700 km; Figure 3 – 1.B) between Europe and Iberia-CSB-Briançonnais along the North Pyrenean Fault and the East Variscan Shear Zone, a Variscan transcurrent shear zone that was reactivated in Mesozoic time to accommodate the motion of Iberia relative to Europe during the opening of the North Atlantic, as proposed by previous authors (Choukroune, 1992; Matte, 2001; Stampfli and Borel, 2002; Sibuet, 2004; Guillot and Ménot, 2009; Guillot et al., 2009; Ballèvre et al., 2018). It also implies significant strike-slip motion (c. 230 km) within the Adriatic Plate to avoid an overlap between Corsica and Northern Adria back to Triassic time (200 Ma, Figure 3-2). This overlap or “Adria Problem” was already mentioned by Wortmann et al. (2001), Stampfli and Borel (2002), Schettino and Turco (2011), and implemented in Hosseinpour et al. (2016)’s kinematic model (based on rotation poles from Schettino and Turco, 2011; Table 1), in which they subdivided the Adriatic Plate in two plates, Northern Adria and Southern Adria (or Apulia), along the Mattinata Fault (MF; Figure 1 and Figure 3 – 2B) across the Gargano Promontory. Multichannel seismic profiles along the eastward offshore

390

continuation of this fault shows evidence for strike-slip activity during the Late Cretaceous to Paleogene (Argnani et al., 2009). The amount of displacement (c. 230 km) is however most likely over-estimated in our model. More tectonic deformation are observed within the Adriatic Sea to the north, along the so-called Mid-Adriatic Ridge (Scisciani and Calamita, 2009; previously named Central Adriatic Deformation Belt by Argnani and Frugoni, 1997). This ridge formed by transpressional reactivation of pre-existing rift-related Mesozoic structures, mostly in Plio-Pleistocene time as shown along seismic profile CROP M15 and present-day GPS data (D'Agostino et al., 2008). An earlier inversion phase is observed by lateral thickness variations and unconformities above the Albian-Aptian reflector (see Figure 6 of Scisciani and Calamita, 2009), especially during the Paleogene-Miocene succession (Figures 3 and 8 of Scisciani and Calamita, 2009). Moreover, strike-slip deformation and reactivation of Jurassic rift-related structures in Cretaceous-Eocene time have been reported from the Southern Alps (Castellarin et al., 2006) to the Central Apennines (Cipriani and Bottini, 2019a, 2019b). It is thus very likely that the entire Adriatic Plate actually deformed in a more diffuse way along a series of strike-slip faults in Late Cretaceous-Paleogene time. However, it is extremely challenging to constrain the exact magnitude and timing of motion along those faults and would require further investigations in the future. For the sake of simplicity, we follow the model of Schettino and Turco (2011) and Hosseinpour et al. (2016) and divide the Adriatic Plate into two plates along a single major strike-slip fault. Our model can thus be viewed as an end-member model that implies a maximum amount of sinistral strike-slip displacement along the Mattinata Fault and between Europe and Iberia-CSB, but fits best the paleo-geography of Adria-Sardinia-Calabria (Molli et al., 2020) and subduction record of the PL Basin (section 2). Sinistral motion along the Mattinata Fault (c. 230 km) to “restore” Adria to its present-day configuration is accommodated progressively during the counter-clockwise motion of Africa relative to Europe, between c. 100-40 Ma. Thus, it does not affect the opening kinematics of the PL Basin occurring earlier in the Jurassic (section 2), which is the focus of this paper. The implication of this strike-slip motion within Adria is discussed in section 5.3 in terms of plate convergence during the Alpine Orogeny.

**Table 1. Total reconstruction rotations used in this study for Sardinia-Corsica and Adria.**

Age (Ma)	Latitude	Longitude	Angle	Moving vs Relative Plate	Reference
<b>Corsica-Sardinia</b>					
0.0	0.0	0.0	0.0	COR-SAR vs Europe	
16.0	0.0	0.0	0.0	COR-SAR vs Europe	Speranza et al. (2002)
21.0	43.5	9.0	-23.0	COR-SAR vs Europe	Speranza et al. (2002)
35.0	43.5	9.0	-53.2	COR-SAR vs Europe	This study (rifting Liguro-Provençal Basin)
83.0	42.7458	8.0933	-56.8041	COR-SAR vs Europe	This study (shortening Provence)
83.0	-44.7583	-168.868	47.0239	COR-SAR vs Iberia	Crossover (change in relative plate)
93.0	-44.4487	-168.6366	47.77	COR-SAR vs Iberia	This study (end opening Valais Basin)
144.7	-45.5809	-166.3455	42.7547	COR-SAR vs Iberia	This study (opening Valais Basin)
250.0	-45.5809	-166.3455	42.7547	COR-SAR vs Iberia	
<b>Northern Adriatic Plate (Adria)</b>					
0.0	0.0	0.0	0.0	Adria vs Apulia	
40.1	0.0	0.0	0.0	Adria vs Apulia	Schettino and Turco (2011)
47.0	-26.5	-166.58	1.0	Adria vs Apulia	Schettino and Turco (2011)



Age (Ma)	Latitude	Longitude	Angle	Moving vs Relative Plate	Reference
60.0	-26.5	-166.58	1.0	Adria vs Apulia	Schettino and Turco (2011)
70.0	-26.5	-166.58	2.0	Adria vs Apulia	Schettino and Turco (2011)
100.0	-26.5	-166.58	7.73	Adria vs Apulia	Schettino and Turco (2011)
250.0	-26.5	-166.58	7.73	Adria vs Apulia	Schettino and Turco (2011)
<b>Southern Adriatic Plate (Apulia)</b>					
0.0	0.0	0.0	0.0	Apulia vs Europe	
20.0	38.2028	-3.1628	-5.3474	Apulia vs Europe	Le Breton et al. (2017)
20.0	50.5636	21.1076	-2.9022	Apulia vs Africa	Crossover (change in relative plate)
220.0	50.5636	21.1076	-2.9022	Apulia vs Africa	Africa moving with Africa
220.0	49.4645	-0.0993	-68.068	Apulia vs Europe	Crossover (change in relative plate)
230.0	50.4113	-1.4579	-68.534	Apulia vs Europe	This study (opening Ionian Basin, timing from
250.0	50.4113	-1.4579	-68.534	Apulia vs Europe	Speranza et al., 2012)

### 3.5 Reconstruction of the AlKaPeCa units

West of Adria, remnants of the western Mediterranean subduction zone are found today in southern Spain (Alboran), northern Africa (Kabyliya), Sicily (Peloritani) and southern Italy (Calabria; Figure 1), together referred to as the AlKaPeCa units (Bouillin et al., 1986; Guerrera et al., 1993; Michard et al., 2002, 2006). These units are continentally derived, far-travelled nappes that acquire their present-day position during the fast rollback of the Gibraltar and Calabrian subduction zones in Oligo-Miocene time. For this time period, we used the tectonic reconstructions of Van Hinsbergen et al. (2014) which is based on a compilation of shortening and extension estimates from the Atlas mountains, the Betic Cordillera, the Alboran domain, the Algerian Basin, the Gulf of Valencia and the Tyrrhenian Sea (Figure 1).

425

The similarity of the Triassic-Liassic stratigraphy and the Variscan basement between the AlKaPeCa units and coeval Tuscan and Sesia domains on the Adriatic Plate suggest that the AlKaPeCa units were originally derived from a microplate that rifted away from the Iberian-CSB-Africa-Adria continental margins during the opening of the PL Basin in Jurassic time (Michard et al., 2002, 2006; Molli, 2008, 2020). Similar “Adria-like” features are found in Corsica within the Nebbio units (Molli, 2008) which also suggests a possible continuity of this continental microplate to the NE, between Corsica and Adria towards Sesia (Michard et al., 2002, 2006) and thus supports our reconstructions of the CSB (section 3.3.). This microplate has various names in the literature (e.g. “Alcapecchia” in Handy et al. 2010; “Mesomediterranean terrane” in Guerrera et al., 2019). To simplify, we refer only to “AlKaPeCa” here and want to point out that the exact extent of this microplate in Mesozoic times is very uncertain (hence the question marks on our tectonic maps, Figure 4). This microplate is important for the geodynamic evolution of this region as it separated a northern and a southern branch of the PL Ocean, supported by the presence of Tethys-derived ophiolite units in the Betic Cordillera (southern Spain) and in the Maghrebide Belt (northern Africa-Sicily), respectively (Michard et al., 2002, 2014; Guerrera et al., 2019). The polarity of subduction zone(s) in this area is debated (e.g. Jolivet et al., 1998; Argnani, 2012; Guerrera et al., 2019). In our tectonic reconstructions, we follow a “two-subduction” model that implies

435

440 first a southeast-dipping (“Alpine”) subduction of the northern branch of the PL ocean in Late Cretaceous-Eocene time followed by a switch of subduction polarity to west-northwest (“Apenninic”) subduction of the southern branch of the PL when the microplate entered the subduction zone at ~ 35 Ma (e.g. Michard et al., 2006; Molli, 2008; Molli and Malavieille, 2011).

### 3.6 Reconstruction of the AICaPa-Tisza-Dacia units

445 Other tectonically complex and far-travelled nappes are found east of Adria in the Eastern Alps, Carpathians and beneath the Pannonian Basin: the AICaPa-Tisza-Dacia units. The AICaPa (“**A**lps-**C**arpathians-**P**annonian Basin”) unit is derived from Adria and corresponds to the Austroalpine nappes of the Eastern Alps and the Inner West Carpathians (Schmid et al., 2008; Figure 1). The Tisza and Dacia units, presently beneath the Pannonian Basin, consists of tectonic units with a mixed European and Adriatic affinities (Schmid et al., 2008; Handy et al., 2015). These three tectonic units comprise a long and complex tectonic evolution from the opening and closure of several oceans (Neo-Tethys and part of Alpine Tethys; e.g. Schmid et al., 450 2008, 2020). During the Neogene, they underwent significant extension and rotation during the fast rollback of the Carpathian subduction zone and upper-plate extension with the opening of the Pannonian Basin (e.g. Ustaszewski et al., 2008 and references therein). Thus, it is extremely challenging to reconstruct their past position and former extent. For the Jurassic, we follow Schmid et al. (2008) and Vissers et al. (2013) who proposed that Tisza-Dacia separated from Europe during the opening of the eastern part of the PL Ocean. This in return implies a strike-slip motion along the Dobrogea Fault Zone NE of Moesia, 455 which remains poorly constrained (question marks on Figure 4). After the opening of the PL Ocean, convergence between Africa and Europe was accommodated within the AICaPa unit along an intracontinental subduction zone (Eo-Alpine orogen; Stüwe and Schuster, 2010). The accretion of the Austroalpine nappes was complete by c. 84 Ma and the “Alpine” south-dipping subduction of Alpine Tethys initiated (Handy et al. 2010). For the Late Cretaceous-Cenozoic, our model is based on the tectonic reconstructions of Handy et al. (2015) and Ustaszewski et al. (2008). This area remains extremely simplified in 460 our tectonic maps (Figure 4) as this is out of scope of our study; a more detailed review and reconstruction of this area can be found in Schmid et al. (2020) and van Hinsbergen et al. (2020).

## 4 Results

### 4.1 Tectonic maps back to 200 Ma

465 Following the geological records and kinematic constraints summarized in the past two sections, we constructed a series of tectonic maps of the Alpine-Mediterranean area (Figure 4) for key times covering the opening of the Piemont-Liguria Ocean (200-130 Ma) and the Alpine Orogeny (83-0 Ma). Those maps are a deliberately simplified representation and aim at showing the main plates and plate boundaries through time. They do not show intraplate deformation, nor rifting along the continental margins. Those regional reconstructions are incorporated into the global plate model of Müller et al. (2019). Animations

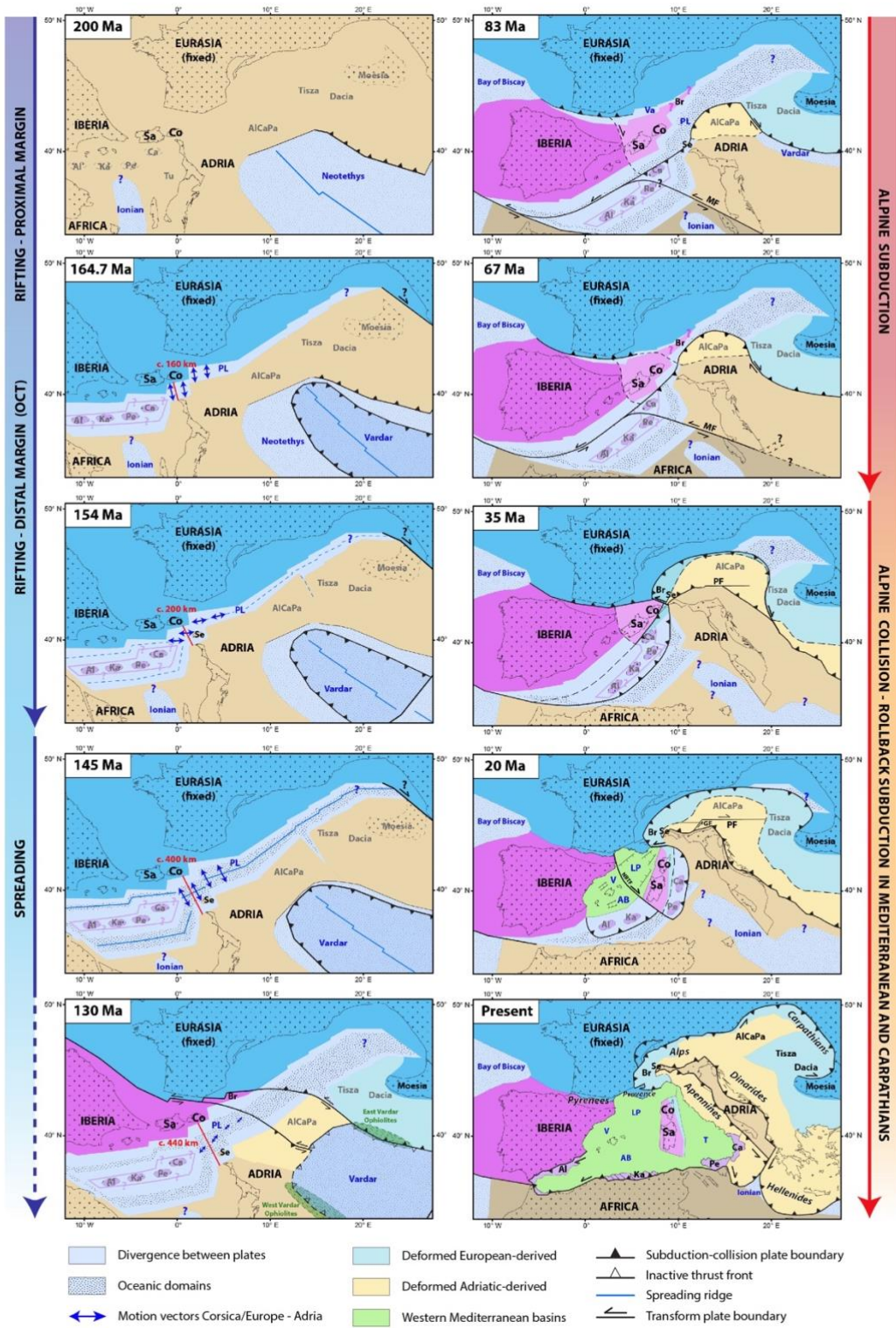
showing the evolution of the Alpine-Mediterranean back to 250 Ma and age-grids of the PL Ocean are available at:  
470 [https://www.earthbyte.org/webdav/ftp/Data\\_Collections/Muller\\_etal\\_2019\\_Tectonics/](https://www.earthbyte.org/webdav/ftp/Data_Collections/Muller_etal_2019_Tectonics/).

The divergent motion between the two major plates, Europe vs. Africa (Adria), in the Jurassic (blue vectors on Figure 4, obtained with the “flowline” tool on GPlates) shows different stages of opening of the PL Basin. First, a NNW-SSE directed (relative to Europe fixed) divergence between 200 and 164.7 Ma (Early-Middle Jurassic) followed by an oblique E-W directed  
475 motion until 154 Ma (Middle-Late Jurassic). Then the main divergent phase occurs between 154 and 145 Ma (Late Jurassic) in a NW-SE direction. At 145 Ma (Early Cretaceous), Iberia and CSB start moving relative to Europe due to the opening of the North Atlantic. This oblique motion significantly decreases the divergence in the PL Basin, which totally ends at about 130 Ma. The different stages of opening of the PL Basin (200, 164.7, 154, 145 and 130 Ma) are derived from the stages of opening of the Central Atlantic (Kneller et al., 2012) and the North Atlantic (Barnett-Moore et al., 2018).

480 Based on the review of geological events given in sections 2 and 3, we can summarize the main stages of convergence (right panel of Figure 4) as follows. From 130 Ma, the motion between Europe, Iberia and Africa (Adria) is mostly strike-slip. Subduction of parts of the PL Ocean to the east starts in response to the eastward motion of Iberia-CSB and is kinematically linked with the Eo-Alpine Orogeny within the AlCaPa unit. At 83 Ma, the oblique motion of Iberia and Africa relative to  
485 Europe becomes more orthogonal. The “Alpine” south-directed subduction starts, with Adria and the accreted AlCaPa unit as part of the upper plate. The subduction progresses from SE to NW, with the progressive subduction of Sesia, the PL ocean, the Briançonnais, the Valais Basin and finally the European margin. At 35 Ma, collision starts in the Alps while subduction continues more to the East along the Carpathians and switches to the “Apenninic” northwest-directed subduction in the Western Mediterranean. Finally, since 35-20 Ma, fast rollback of the Gibraltar and Calabria subduction zones in the western  
490 Mediterranean, of the Hellenic subduction in the eastern Mediterranean and of the Carpathians is accompanied by indentation of the Adriatic Plate into Europe, lateral extrusion of the Eastern Alps towards the east and upper-plate extension and opening of the Pannonian Basin, the Western Mediterranean basins, and Aegean Sea, shaping the complex arcuate and broadly deformed plate boundaries that we can observe today.

495 **Figure 4 (next page): Simplified tectonic maps of the Alpine-Mediterranean area from 200 to 130 Ma (Divergent phase – Left panel) and from 83 to 0 Ma (Convergent phase – Right panel), relative to Eurasia fixed, showing the main plate boundaries and divergence between Europe-Corsica and Adria (blue vectors). Amount of divergence along a 2D transect between Corsica and Adria is indicated in red. Note these maps do not show intraplate deformation and rifting along the continental margins but the divergence between plates when considered rigid. This study focuses on the area between Corsica-Europe and Adria, as the exact paleo-location of the AlKaPeCa units to the west and AlCaPa-Tisza-Dacia units to the east is poorly constrained. Present-day coastlines are represented for orientation. Abbr.: AB: Algerian Basin, Al - Alboran, AlCaPa - Alpine-Carpathians-Pannonian Unit, Br - Briançonnais, Ca - Calabria, Co - Corsica, GF – Giudicarie Fault, Ka - Kabylides, LP - Liguro-Provençal Basin, NBTZ - North Balearic Transform Zone, Pe - Peloritani, PF - Periadriatic Fault, PL – Piemont-Liguria Basin and Ocean, Sa - Sardinia, SCRZ - Sicily Channel Rift Zone, Se - Sesia, Tu – Tuscany, T - Tyrrhenian Sea, V – Gulf of Valencia, Va – Valais Basin.**

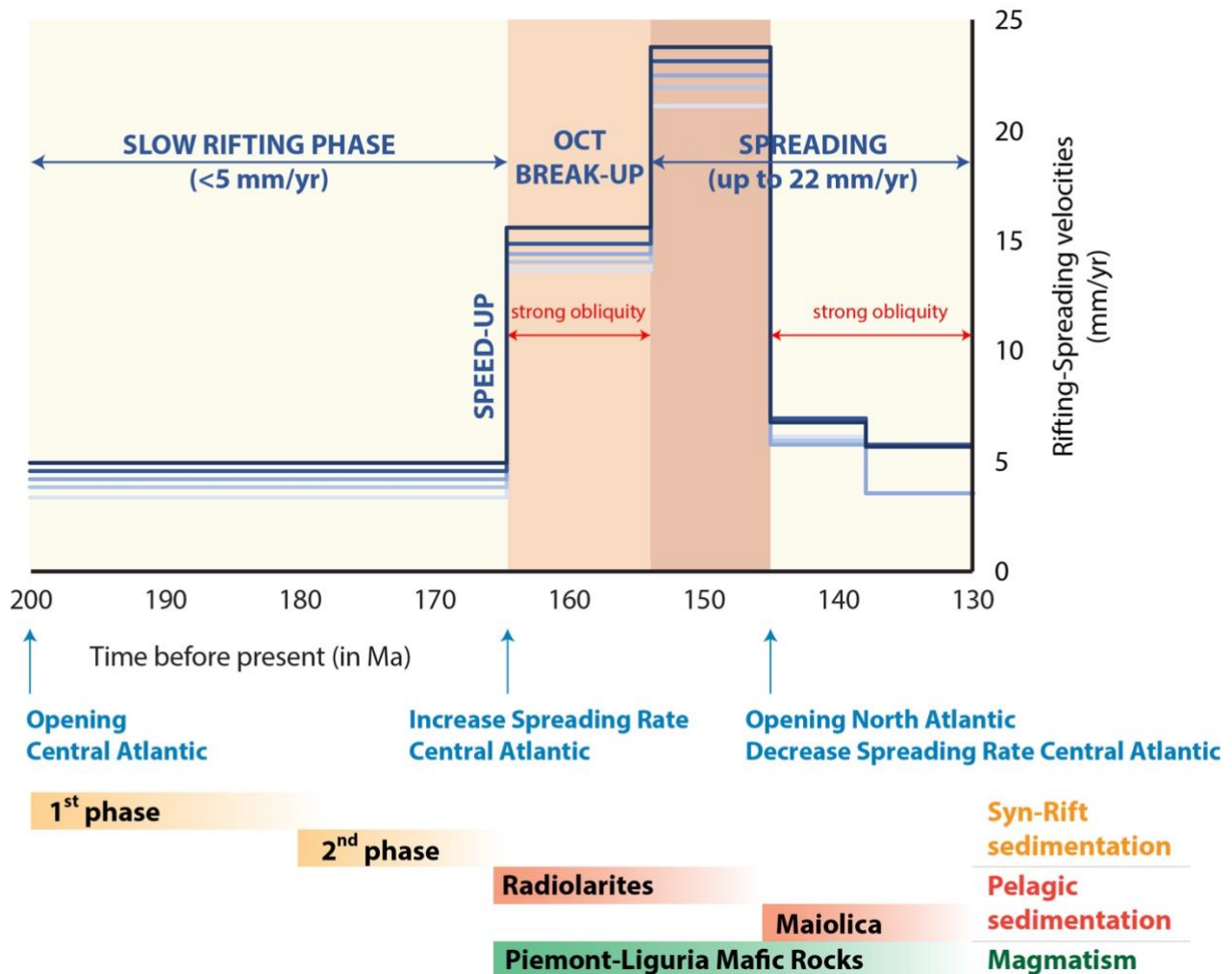
505



#### 4.2 Velocities of rifting and spreading along the PL Basin

We estimate the velocities of plate divergence during the opening of the PL basin (Figure 5) using the motion vectors between Europe (Corsica-Briançonnais) and Adria (blue vectors on Figure 4). Full-rates of opening are first very slow (c. 4 mm/yr from SW to NE) between 200-164.7 Ma. They accelerate first to c. 15 mm/yr (16 to 14 mm/yr from SW to NE) between 164.7 -154 Ma and secondly to c. 22 mm/yr (ranging from 24 to 21 mm/yr from SW to NE) between 154-145 Ma. They decrease significantly at 145 Ma down to c. 5 mm/yr until 130 Ma. We assess an uncertainty of  $\pm 5$  km in measuring the vector length, which - once divided by the shortest time period (154-145 Ma) - leads to an error bar up to  $\pm 0.5$  mm/yr in the calculated rates. The slight increase in rate from SW (Corsica-Adria) to NE (Briançonnais-Adria) indicates a triangular-shape opening of the PL Basin.

The first slow phase (c. 4 mm/yr) coincides in time with the opening of the Central Atlantic (Kneller et al., 2012) and tectono-stratigraphic record of rifting along the PL Basin (Figure 5; section 2.1.1; e.g. Froitzheim and Eberli, 1990). The first acceleration at c. 165 Ma fits with an increase in spreading rate in the Central Atlantic (from ultra-slow to slow; Kneller et al., 2012) and onset of deep-sea sedimentation, mantle exhumation and MORB-type magmatism in the PL Basin (Figure 5; section 2.1.1; e.g. Bill et al., 2001; Manatschal and Müntener, 2009). The fastest rates of divergence are found on a very short time period of 9 Myr (154-145 Ma) and are in the range of slow to ultra-slow spreading ridge ( $< 20$  mm/yr; Dick et al., 2003). The drop at 145 Ma coincides with a decrease in spreading rates in the Central Atlantic (Kneller et al., 2012) and the opening of the North Atlantic (Barnett-Moore et al., 2018).

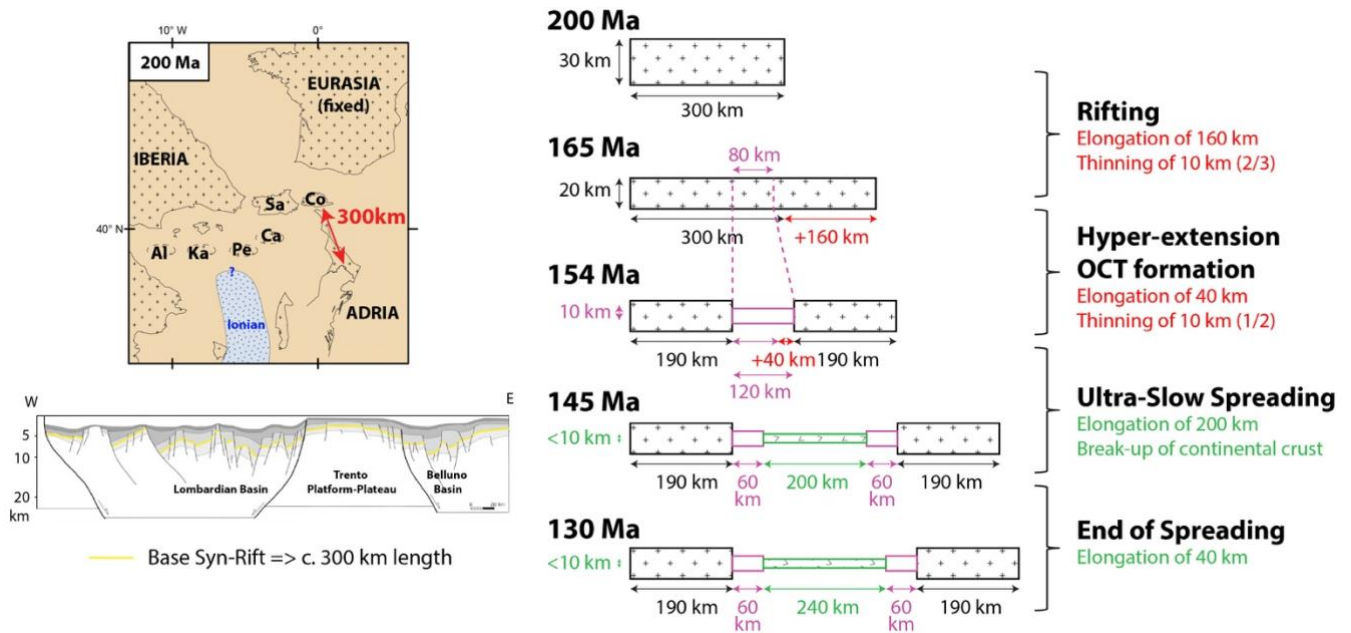


525 Figure 5. Velocities (full-rate) of rifting and spreading along the PL basin between Europe (Corsica-Briançonnais) and Adria (blue  
 vectors on Figure 4) in Jurassic-Early Cretaceous time. Timing of syn-rift sedimentation from Froitzheim and Eberli (1990), deep-  
 sea pelagic sedimentation from Bill et al. (2001) and Ferrando et al. (2004), and U/Pb ages on zircons from mafic rocks of the PL  
 ocean from Manatschal and Müntener (2009 and references therein). Note the slight increase in velocities from NE to SW (light to  
 530 dark blue curves) and the strong acceleration at 164.7 and 154 Ma for all curves.

#### 4.3. Thinning of the continental margins

The total amount of divergence along a NW-SE directed transect between Corsica and Northern Adria (in red on Figure 4) equals c. 440 km and can be subdivided into 160 km between 200-164.7 Ma, 40 km between 164.7-154 Ma, 200 km between  
 535 154-145 Ma and 40 km between 145-130 Ma. However, this does not represent the actual width of the basin but the amount of total horizontal divergence (elongation). To estimate the final length of the rifted margins and ocean, we use a simple “pure-shear” (symmetric and uniform) stretching approach (McKenzie, 1978) for which we need to assume the initial length of area

540 affected by rifting. Here we presume an initial length of c. 300 km, obtained from restoring the length of the base of syn-rift horizons across the present-day Southern Alps and Adriatic Foreland affected by rifting in the Jurassic (Masetti et al., 2012) and facing “stable” (i.e. not affected by rifting) Corsica in our reconstructions back to 200 Ma (Figure 6). This amount should be considered as an absolute minimum, as this section represents only the preserved proximal part of the Adriatic margin. The present-day W-E orientation of the rift basins becomes NNW-SSE relative to Europe once back-rotated with Adria at 200 Ma (Figure 6), which fits well with the kinematics of opening of the PL Basin obtained from our reconstructions (Figure 4; section 4.1). Assuming an initial crustal thickness of 30 km (Masini et al., 2013) and a localization of the rift after the slow rifting phase described above (200-165 Ma) along a zone of 80 km (typical for Narrow Rift such as the East African Rift today, Ebinger et al., 1999; Corti, 2009; Brune et al., 2017a), we estimate a total length of 380 km for the proximal margins (> 10 km thick), 120 km for the hyper-extended/OCT zone (< 10 km thick) and 240 km of oceanic crust (Figure 6). This remains a simple approximation as it does not take into account asymmetry during rifting, necking and hyper-extension, but nevertheless provides a first-order estimate.



550 **Figure 6. Thinning of continental crust and extent of rifted margins along a 2D transect from Europe/Corsica and Adria using amount of divergence (elongation) from kinematic reconstructions (red transect on Figure 4) and a pure-shear approach (McKenzie, 1978). The initial length of 300 km is assumed by restoring length of base of syn-rift horizons along Southern Alps and Adriatic Foreland (down left, redrawn from Masetti et al., 2012). Note the present-day W-E orientation becomes NNW-SSE relative to Europe once back-rotated with Adria at 200 Ma as shown on our tectonic map (up left, red arrow).**

555

#### 4.4. Geodynamic consistency

In order to test our kinematic model in the context of rifting and thinning of the PL Basin in more detail, we use a 2D thermo-mechanical modelling approach that is based on the geodynamic finite-element software SLIM3D (Popov and Sobolev, 2008). This model is driven solely by boundary velocities while localization of rift faults, lithospheric necking, continental break-up and subsequent sea-floor spreading evolves in a purely self-consistent manner. The model involves four layers (upper crust, lower crust, strong and weak mantle), which all deform in accordance with corresponding flow laws (wet quartzite, wet anorthite, dry olivine and wet olivine, respectively). The initial Moho depth is set at 33 km and the Lithosphere-Asthenosphere Boundary (LAB, 1300°C) at 120 km. The LAB is slightly elevated (5 km) in the center of the model to avoid rift localization at the model boundaries (Figure 7A). We follow a model setup that has been extensively used in modelling narrow rifting and rifted margin formation (Brune et al., 2012, 2013, 2017a, 2017b; Brune, 2014) and for a more detailed description of the employed boundary conditions, initial conditions, weakening mechanisms and material parameters, we refer the reader to Brune et al. (2014).

It is well-established that the rift velocity exerts key control on the structural evolution of a rift (Huismans and Beaumont, 2003; Pérez-Gussinyé et al., 2006; Tetreault and Buitert, 2018). In order to test the impact of our kinematic plate tectonic model, we derive rift-perpendicular velocities from the 2D transect between Corsica-Adria (red transect in Figure 4) as input for the geodynamic modelling by means of the following steps: (1) 4 mm/yr for the first 46 Myr (200 km divergence between 200-154 Ma); (2) 22 mm/yr for 9 Myr (200 km divergence between 154-145), and (3) 3 mm/yr for 15 Myr (40 km divergence between 145-130 Ma). We point out that the first acceleration shown in Figure 5 (15 mm/yr between c. 165-154 Ma) is obtained from the plate motion vectors (blue vectors on Figure 4) and reflects the strong obliquity of motion during that phase, however, along a 2D transect the net divergence is only 40 km between 164.7-154 Ma (3.6 mm/yr). Thus, this phase is accounted for in the first step of our model (with rates of 4 mm/yr).

The modelling results are available as an animation in supplementary material (movie S1). The results after 1 Myr (model setup), 20 Myr, 35 Myr, 46 Myr, 55 Myr and 70 Myr are shown on Figure 7 and allow us to distinguish different rifting stages (Figure 7A-D, constant velocity of 4 mm/yr). First, the entire domain is affected by normal faults (Figure 7A) until lithospheric necking commences at about 12 Myr into the model runtime. The rift localizes along a zone of about 110 km width and the onset of hyper-extension (< 10 km crustal thickness; Lavier and Manatschal, 2006) starts after 20 Myr (Figure 7B). The onset of mantle exhumation occurs after 35 Myr (Figure 7C) and is accompanied by the detachment of continental allochthons. Finally, the continental lithosphere breaks up rapidly when the rift velocity increases to 22 mm/yr at 46 Myr (Figure 7D). This is the moment when the lithosphere shallows drastically (< 10 km; Figure 7D; movie S1), as observed beneath present-day ultraslow-spreading ridges (e.g. Mohns Ridge; Johansen et al., 2019), which would lead to decompression melting and onset of sea-floor spreading.





590 **Figure 7 (previous page). 2D high-resolution thermo-mechanical modelling of the opening of the PL Basin using velocities from our kinematic reconstructions (red transect between Europe and Adria on Figure 4). Material phases are indicated in Panel A. Strain rate is visualized as black transparent overlay. Deep lithospheric and asthenospheric temperatures are depicted by brownish overlay and 1200°C isotherm (black line). Extent of necking zone (30-10 km thick), hyper-extended and OCT (< 10 km thick) and oceanic domain is indicated in white. See text for further discussion. Animation of model results can be found as supplementary movie (S1).**

## 595 **5 Discussion**

### **5.1 Opening and extent of the PL Basin**

Using our kinematic reconstructions and geodynamic modelling of the rifting phase, we can identify and date the following four stages of opening of the PL Basin (Figures 5, 6, 7), as defined by Lavier and Manatschal (2006):

- 600 (1) “Stretching Phase”: rifting of the proximal continental margin and necking of the lithosphere between 200-180 Ma (first rifting phase);
- (2) “Thinning Phase”: hyper-extension of the distal continental margin between 180-165 Ma (second rifting phase);
- (3) “Exhumation Phase”: OCT formation with mantle exhumation between 165-154 Ma;
- (4) “Spreading Phase”: break-up and slow to ultra-slow oceanic spreading between mostly 154-145 Ma.

605 Our results fit very well with independent datasets (tectono-sedimentary, geochemical, geochronological) from the Alps (section 2.1.1; Figure 5) that show two-rifting phases (c. 200-180 Ma, 180-165 Ma; e.g. Froitzheim and Eberli, 1990; Mohn et al., 2010; Ribes et al. 2019), activation of the necking zone around 180 Ma (Mohn et al., 2012; Ribes et al. 2019), onset of mantle exhumation and magmatism along typical magma-poor OCT at about 165 Ma (e.g. Manatschal and Müntener, 2009; Ribes et al. 2019).

610 Our kinematic reconstructions show an increase in obliquity and rate of plate motion between 165-154 Ma (Figures 4 and 5) and a progressive opening of the PL Basin from SW to NE (Figure 5). Thus the transition between stages 3 and 4, i.e. break-up and onset of spreading, was most likely a propagating process from SW to NE. Interestingly, abrupt plate acceleration such as the one at c. 165 Ma (“Speed-up” on Figure 5) is commonly observed along other continental margins worldwide (Brune et al., 2016). On other margins, this acceleration corresponds to the shaping of the distal part of the margins, pre-dating  
615 continental breakup of about 5-10 Ma, and reflects a strength-velocity feedback mechanism during rifting (“dynamic rift weakening”; Brune et al., 2016). Moreover, Brune et al. (2018) showed a clear correlation between rift obliquity and increase in plate motion velocities, as we observed between 165-154 Ma (Figure 5). However, it is the effective rift-perpendicular velocity that leads to lithospheric thinning and thus oblique segments need more time to reach breakup than orthogonal rifts. This corroborates our interpretation that stage 3 (165-154 Ma) corresponds to the formation of the (hyper-)distal OCT zone,  
620 with the juxtaposition of pelagic sediments, serpentized mantle, gabbros, basalts (e.g. Epin et al., 2019), prior break-up. The detachment of continental allochthons, such as Sesia (Figure 4; e.g. Babist et al., 2006), occurs also during that stage, which fits with the crystallization age (164-156 Ma) of zircons within syn-magmatic shear zones south of the Sesia zone (U/Pb zircon age; Kaczmarek et al., 2008). We therefore diverge from Li et al. (2013) who interpret this phase as oceanic spreading. We

rather suggest that most of the preserved mafic rocks came from the OCT domain rather than the mature oceanic domain, mostly lost to subduction, which is supported by the sub-continental (refertilized) mantle-type composition of most peridotites of the ophiolites preserved in the Alps (Picazo et al. 2016). A subcontinental affinity of the exhumed mantle has been inferred from petrological analysis in the Western Alps suggesting diffuse porous flow of asthenospheric melts through the continental lithospheric mantle as a key process (Piccardo and Guarnieri, 2010). Similar to other recent modelling efforts (Hart et al., 2017; Andrés-Martínez et al., 2019; Jammes and Lavier, 2019), our numerical models do not capture porous flow processes and are therefore not comparable with this type of observation. However, they show that the asthenospheric mantle resided close to continental mantle lithosphere prior to exhumation, which might be indicative of continental mantle affinity. Furthermore, our interpretation does not exclude the possibility that first immature or embryonic oceanic domains, such as the Chenaillet-Montgenèvre Ophiolite (oceanic mantle-type, Picazo et al. 2016; U/Pb ages ranging from 148-156 Ma to 165 Ma; Costa and Caby, 2001; Li et al., 2013, respectively) have formed already during this phase of very oblique plate motion. Still we propose that formation of mature oceanic crust took place when the plate motion became more orthogonal and rates of opening reached c. 22 mm/yr (Figures 4 and 5). Indeed, our modelling results show that mechanical break-up of the continental lithosphere coincides with the increase of rift-perpendicular velocity (Figure 7D; 1200°C at 10 km depth). We have to caution that the numerical model cannot clearly differentiate between mantle exhumation prior to break-up and potential mantle exhumation during spreading. In either case, mature oceanic spreading was slow to ultra-slow and very short-lived (9 Ma), as the divergence along the PL domain decreased significantly at 145 Ma and completely ceased at 130 Ma.

Our geodynamic modelling, constrained by our plate reconstructions, reproduces the kinematics of the different rifting phases recorded in the Alps, but also the first-order structures of the hyper-extended margins. The final “shape” of the distal rifted margin obtained from our modelling (Figure 7E) agrees with geological reconstructions of the Alpine Tethys margins (Mohn et al., 2012, their Figure 2). Moreover, we provide quantitative constraints on the final width of the different domains: (1) 45-65 km for the necking zone (thinning of the crust from 30 to 10 km; Figure 7); (2) 40-80 km for the distal margin (crust thinner than 10 km, hyper-extended and OCT domains; Figure 7); (3) maximum 250 km for the oceanic domain (Figures 4, 6 and 7). Hence, the total width of the PL Basin, including both the rifted continental margins (thinner than 30 km) and the oceanic crust featured a total extent of 480 km (Figure 7E).

The kinematic evolution of the comparably small PL Basin is closely linked to the much larger neighboring Atlantic Ocean and the variation of rifting/spreading velocities coincides with changes in divergence rates of the Central Atlantic (Figure 5). The PL Ocean opened as a third arm of the Central Atlantic Ocean in Jurassic time (as previously proposed; e.g. Stampfli and Borel, 2002) and “died out” when the North Atlantic took over at c. 145 Ma (Barnett-Moore et al., 2018). It then closed due to the opening of the South Atlantic (e.g. Müller et al., 1999) and ensuing counter-clockwise motion of Africa relative to Europe in Cretaceous-Cenozoic times.

## 5.2 Assessing the model

The kinematics of the opening of the PL Basin is primary governed by the motion of Europe and Adria, as Iberia-Sardinia-Corsica started to move at 145 Ma, i.e. after the opening of the PL Basin. In our model, it is more precisely governed by the motion of Europe and Africa since we assume Adria rigidly connected with Africa after the opening of the Ionian Basin in Triassic time and prior the strike-slip motion along the MATF in Cretaceous-Cenozoic time (see section 3.3). Thus our results are extremely dependent on the kinematic reconstructions used for the opening of the Central Atlantic in the Jurassic, here the model of Kneller et al. (2012). The latter is based on a non-rigid inversion method that restores incrementally crustal stretching allowing a better restoration of the syn-rift to breakup phase and producing realistic subsidence and crustal thinning patterns that are consistent with field observations. Other recently published model for the Central Atlantic, such as Labails et al (2010), show, however, significant gaps in palinspastic restorations of the margins (see further discussion in Kneller et al., 2012). Moreover, when using the rotation poles of Labails et al (2010) for the Central Atlantic, we obtain a phase of convergence rather than divergence between 190 and 170 Ma in the PL domain between Europe-Adria. This is in contradiction with the clear record of syn-rift basins of Early Jurassic age in the Alps (section 2.1.1) while our kinematic model using Kneller et al. (2012) fits the geological record of rifting and spreading along the Alpine Tethys (section 5.1).

We assume that the Ionian Basin opened in the Triassic (Speranza et al., 2012). However, Tugend et al. (2019) recently re-evaluated the age of opening of the Ionian Basin to Late Triassic-Early Jurassic (rifting) and late Early Jurassic-Middle Jurassic (spreading), i.e. overlapping in time with the two first rifting stages of the PL Basin. However, uncertainties remain on the exact amount and direction of extension between Africa and Adria that took place at that time. Indeed, the Ionian Basin probably resulted from several phases of extension as indicated for example by the presence of Permian oceanic basins in Sicily (Catalano et al., 1991) and the exact direction and amount of spreading cannot be clearly reconstructed as most of the oceanic domain is now subducted. We tested nevertheless an alternative kinematic scenario in which the Ionian Basin (using the present-day total width of c. 350 km between the Malta and Apulian escarpments; Tugend et al., 2019, their Figure 13a) opens – and thus Adria (Apulia) moves relative to Africa (Tunisia) – in Early-Middle Jurassic (200-164.7 Ma; Tugend et al., 2019) and in a NW-SE opening direction following Frizon de Lamotte et al. (2011). This would reduce the overlap problem between northern Adria and Sardinia-Corsica mentioned in section 3.2 (Figure 3). However, it would significantly increase the obliquity of motion between Sardinia-Corsica and Adria (and the rates of motion up to 9 mm/yr) and therefore reduce considerably the width of the rifted PL domain. Moreover, if we include a significant sinistral strike-slip motion between Africa and Adria during the opening of the Ionian Basin (following the interpretation that the Malta and Apulian escarpments are transform margins; Frizon de Lamotte et al. 2011), Adria would converge towards Sardinia-Corsica rather than diverge, which would be in conflict with the timing of syn-rift deposits and normal faulting along northern Adria (section 2). Future work is therefore required to test in more details such alternative scenarios. Similarly, as discussed in section 2, a possible Jurassic rifting phase affected the Pyrenees and Valais Basin and would also reduce the width of the rifted PL domain between

690 Europe-Adria. Therefore, our calculated extent of the PL Basin and subsequent amount of convergence (below) constitutes maximum estimates.

### 5.3 Implications for subduction processes in the Alps

Using the motion path of NW Adria (Ivrea) relative to Europe, we can estimate the magnitude, direction and rate of Adria-  
695 Europe convergence since the onset of “Alpine” south-directed subduction at about 84 Ma (Figure 8; Table 2). Our model indicates a total amount of plate convergence of c. 680 km towards the NW (relative to Europe) since 84 Ma. We consider two time periods of two different modes of orogenic processes in the Alps (section 2.2): (1) subduction of both oceanic and extended continental/transitional crust to high depth (marked by (ultra)high-pressure metamorphism) between c. 84-35 Ma; and (2) continental collision dominated by positive buoyancy of the continental lithosphere after slab break-off at about 35 Ma  
700 (Von Blanckenburg and Davies, 1995). Following this definition, the total amount of plate convergence can be subdivided into c. 420 km during subduction (84-35 Ma; average rate of 8.6 mm/yr) and c. 260 km during collision (35-0 Ma; average rate of 7.4 mm/yr). If we take into account that the PL ocean had a maximum width of 250 km (in the same NW-SE direction), we can furthermore estimate that at least 63% ( $((680-250)/680 \times 100)$ ) of the material involved in the Alpine Orogeny was extended continental lithosphere and OCT zones of the PL and Valais basins (Figure 4). This may explain why the Alps are such a  
705 singular mountain belt, e.g. with the absence of well-developed magmatic arc during the alpine subduction (McCarthy et al., 2018, 2020) and widespread high-pressure metamorphosed continent-derived rocks (e.g. Kurz et al., 1999; Berger and Bousquet, 2008; Bousquet et al., 2008; Nagel et al., 2013; Sandmann et al., 2014; Fassmer et al., 2016).

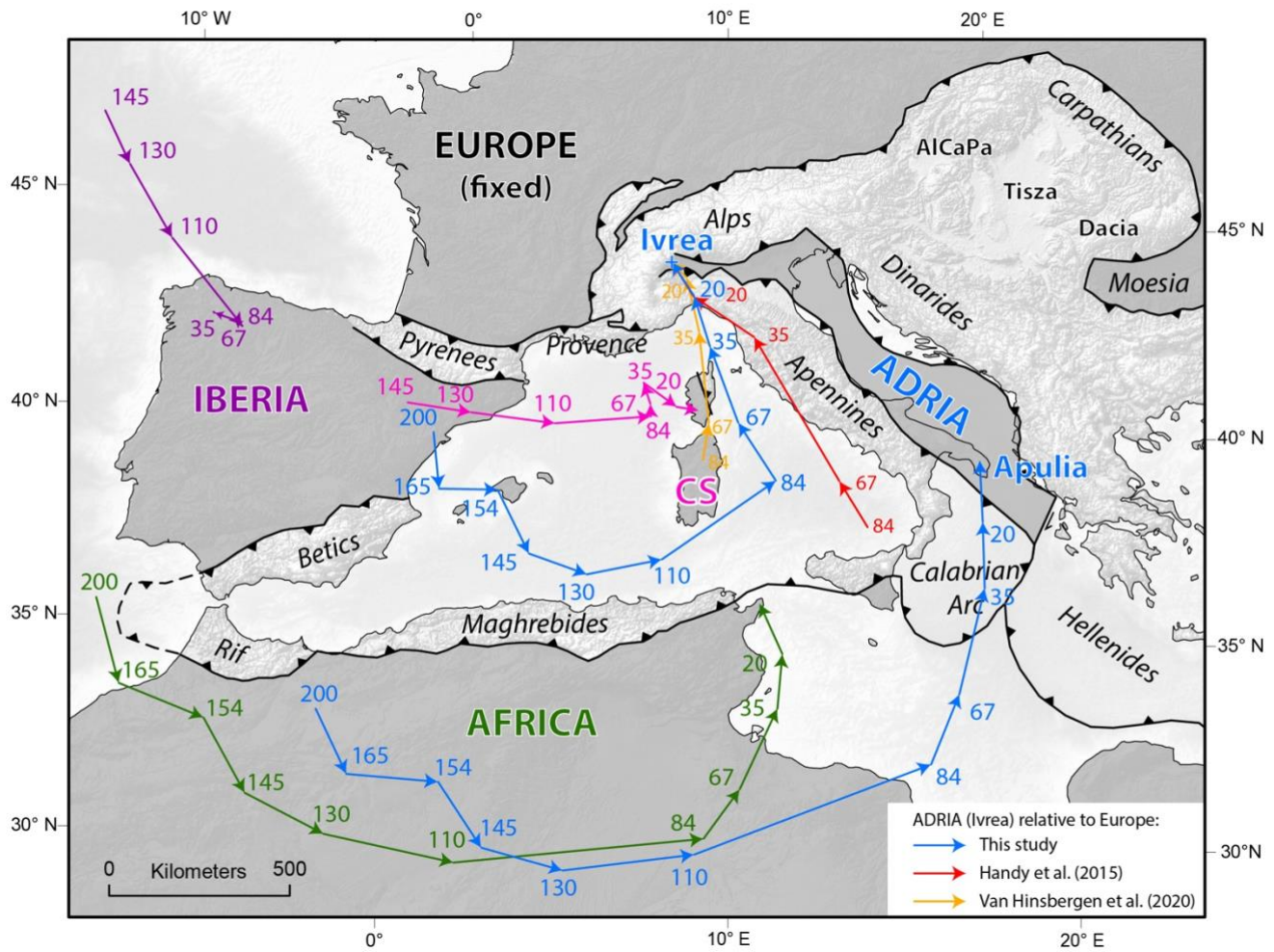
Our estimates of plate convergence are lower than the one obtained from geological reconstructions of the Alps (Handy et al.,  
710 2010, 2015), especially for the subduction phase during 84-35 Ma (c. 200 km difference; Table 2). The 615 km of motion obtained by Handy et al. (2010, 2015) between 84 and 35 Ma is based on a projection (465 km) of the estimated c. 400 km shortening in the eastern Central Alps from (Schmid et al., 1996) between 67-35 Ma, added to the estimated 150 km subduction of Sesia between 84-67 Ma based on the depth of high-pressure nappes of this unit (Babist et al., 2006). A major part of the 400 km shortening in the Central Alps estimated by Schmid et al. (1996) is itself based on an inferred width of the Valais  
715 Basin and Briançonnais that went into subduction between 65-50 Ma and an inferred amount of subduction also based on depth of high-pressure metamorphism of the Adula Nappe (150 km) between 50-40 Ma. Two possible sources of error arise and may explain the discrepancy with our results: (1) the past extent of the Valais/Briançonnais domain inferred by Schmid et al. (1996) was not kinematically constrained and (2) the depth of high-pressure rocks – and thus the amount of subduction – may be overestimated due to possible tectonic overpressure (Ford et al., 2006; Schmalholz and Podladchikov, 2013; Pleuger and  
720 Podladchikov, 2014; Yamato and Brun, 2017).

We note that our estimates of plate convergence are, however, slightly higher than the recent model proposed by van Hinsbergen et al. (2020; Table 2). This is due to the different assumptions we made for the motion of Iberia, Sardinia-Corsica and Adria as previously discussed (section 3). The major difference impacting the amount and rate of plate convergence is that we consider a sinistral strike-slip motion within Adria of c. 230 km along the MF (Figure 3) between 100-40 Ma (Schettino and Turco, 2011; Hosseinpour et al., 2016). This remains poorly constrained and needs to be further studied in the future. Thus, our amounts and rates of plate convergence should be taken as maximum values. We want to emphasize however, that our assumptions regarding the motion of Iberia (post-145 Ma) and strike-slip motion within Adria (100-40 Ma) do not affect our results and interpretation for the kinematics of opening (200-145 Ma) and former extent of the PL Ocean and its margins.

730

To solve the remaining problematic areas especially regarding the paleo-magnetic data from Iberia and Sardinia, future work should focus on quantifying, and incorporating into kinematic reconstructions, the tectonic deformation within the Iberian and Adriatic plates, and between Sardinia-Corsica and France. Interestingly, Dannowski et al. (2020) re-evaluated the nature of basement beneath the Liguro-Provencal Basin to be hyper-extended continental crust (only a few km thick) and exhumed mantle, rather than oceanic crust. Moreover, compressional earthquakes and inverted structures have been observed within the Liguro-Provencal Basin and along the northern African margin, which suggest that those hyper-extended margins and OCT zones may represent incipient subduction zones accommodating the present-day Africa-Europe convergence (Billi et al., 2011; Hamai et al., 2018; Thorwart et al., 2021). This reflects once more the importance of those domains as inherited weakness for potential subduction initiation processes (Beltrando et al., 2010; Tugend et al., 2014; Kiss et al., 2020; Zhou et al., 2020).

735



740

**Figure 8: Motion paths of northern (Ivrea) and southern (Apulia) Adria (blue), Iberia (dark purple), Corsica (light purple) and Africa (green) relative to Europe stationary back to 200 Ma (time step indicated in Ma) using our kinematic reconstructions. Alternative motion paths of northern Adria are also shown for comparison (Handy et al., 2015 in red and van Hinsbergen et al., 2020 in orange). Amount, direction and rate of convergence of Adria (Ivrea) – Europe are given in Table 2.**

745

**Table 2: Amount, mean direction (azimuth) and mean rate of Adria (Ivrea) - Europe convergence during Alpine collision (35-0 Ma) and subduction (84-35 Ma). Comparison with model of Handy et al. (2010, 2015) and van Hinsbergen et al. (2020).**

Time Period	Adria (Ivrea) – Europe Convergence			Reference
	Amount	Azimuth	Rate	
35-0 Ma Alpine Collision	313 km	315°	8.9 mm/yr	Handy et al. (2015)
	260 km	335°	7.4 mm/yr	<b>This study</b>
	210 km	338°	6 mm/yr	van Hinsbergen et al. (2020)
84 - 35 Ma Alpine Subduction	615 km	330°	12.6 mm/yr	Handy et al. (2015)
	420 km	335°	8.6 mm/yr	<b>This study</b>
	350 km	358°	7.1 mm/yr	van Hinsbergen et al. (2020)

## 6 Conclusions

In this study, we focused on the divergent Mesozoic history of the Alpine region, which is crucial to better understand the complex tectonic evolution of this mountain chain. By updating the regional reconstructions of the Western-Central Mediterranean area, implemented into a global plate circuit and complemented by thermo-mechanical modelling, we shed new light on the past extent and opening kinematics of the Piemont-Liguria Ocean. The opening of the Central Atlantic in Jurassic times led to divergence between Europe and Africa and the opening of the Piemont-Liguria Ocean in four stages. Two successive phases of stretching and thinning of the continental crust ( $> 10$  km thick, 200-180 Ma;  $< 10$  km thick, 180-165 Ma) were followed by mantle exhumation and MORB-type magmatism along the hyper-distal (OCT) part of the margin (165-154 Ma). Mature oceanic spreading in a NW-SE direction (relative to Europe) was short-lived (154-145 Ma) and was slow to ultra-slow (up to 22 mm/yr), ceasing progressively in the Early Cretaceous (145-130 Ma). This led to the formation of a small mature oceanic domain of maximum 250 km width. This kinematic evolution is in strong agreement with independent geological records of rifting in the Alps and the age of the Alpine Tethys derived units. The opening of the North Atlantic at 145 Ma led to a period of mostly strike-slip tectonics along this domain. South-directed “Alpine” subduction of the PL Ocean initiated at about 84 Ma, at rates of c. 8.6 mm/yr, and progressed from SE to NW until collision of the Adriatic Plate with the European proximal margin at about 35 Ma. We highlight that at least 63 % of the lithosphere involved in the Alpine Orogeny was highly thinned continental (and transitional) lithosphere and that most of the Alpine Ophiolites were derived from the OCT zones, which emphasizes the importance of the distal domain of continental margins in subduction and exhumation processes. We provide new kinematic constraints (maximum extent of oceanic crust and plate convergence direction and rates) that can be used as set-up for future geodynamic modelling and a better understanding of subduction initiation, magmatism and exhumation processes during the Alpine Orogeny.

### Data availability

All reconstruction files of the kinematic model presented in this paper, as well as animations and age-grids, are available at [https://www.earthbyte.org/webdav/ftp/Data\\_Collections/Muller\\_etal\\_2019\\_Tectonics/](https://www.earthbyte.org/webdav/ftp/Data_Collections/Muller_etal_2019_Tectonics/) or by contacting the first author.

### Video supplement

Results of the 2D thermo-mechanical modelling of the opening of the Piemont-Liguria Basin, using velocities derived from our kinematic reconstructions, are shown in an animation (Movie S1) in supplement to this manuscript.



## Author contribution

775 ELB developed the research concept, acquired funding, carried out the kinematic reconstructions and their interpretation,  
designed the figures and wrote the manuscript with input from all authors. SB performed the thermo-mechanical modelling  
and contributed to the interpretation and discussion of the rifting phase. UK participated in the conceptualization of the initial  
project and in discussion on regional tectonics reconstructions. SZ, MS and DM were involved in the implementation of the  
780 regional kinematic reconstructions into the global deforming plate model using GPlates. SZ and MS generated animations  
centered on the Mediterranean and age-grids of the PL Ocean. DM welcomed ELB for a research stay at the EarthByte Group,  
University of Sydney in 2017, which initiated this collaborative work.

## Competing interests

The authors declare that they have no conflict of interest.

## Acknowledgements

785 ELB and US acknowledge financial support of the German Research Foundation (DFG; BR 4900/2-1 and US 100/4-1). SB  
was funded by the Helmholtz Association through the Helmholtz Young Investigators Group CRYSTALS (VH-NG-1132).  
SZ was supported by Australian Research Council grant IH130200012 and a University of Sydney Robinson Fellowship. MS  
was supported by Australian Research Council grants FT130101564 and DP200100966. GPlates development is funded by  
the AuScope National Collaborative Research Infrastructure System (NCRIS) program. This work benefited greatly from  
790 stimulating conversations with Giancarlo Molli, Jan Pleuger, Mark Handy, members of the AlpArray/4DMB community and  
participants of the 14<sup>th</sup> Emile Argand Conference on Alpine Geological Studies (Alpine Workshop) in Sion in 2019. Finally,  
we thank Andrea Argnani and Douwe Van Hinsbergen for their constructive reviews.

## References

- Advokaat, E.L., Van Hinsbergen, D.J.J., Maffione, M., Langereis, C.G., Vissers, R.L.M., Cherchi, A., Schroeder, R., Madani,  
795 H., and Columbu, S.: Eocene rotation of Sardinia, and the paleogeography of the western Mediterranean region: Earth  
and Planetary Science Letters, 401, 183–195, doi:10.1016/j.epsl.2014.06.012, 2014.
- Amante, C., and Eakins, B.W.: ETOPO1 1 Arc-Minute Global Relief Model: NOAA Technical Memorandum NESDIS  
NGDC, 24, 19, doi:10.7289/V5C8276M, 2009.
- Andreani, L., Loget, N., Rangin, C., and Pichon, X. Le: New structural constraints on the southern Provence thrust belt  
800 (France): Evidences for an eocene shortening event linked to the corsica-sardinia subduction: Bulletin de la Societe

- Geologique de France, 181, 547–563, doi:10.2113/gssgfbull.181.6.547, 2010.
- Andrés-Martínez, M., Pérez-Gussinyé, M., Armitage, J., and Morgan, J.P.: Thermomechanical Implications of Sediment Transport for the Architecture and Evolution of Continental Rifts and Margins: *Tectonics*, 38, 641–665, doi:10.1029/2018TC005346, 2019.
- 805 Argnani, A.: Evolution of the southern Tyrrhenian slab tear and active tectonics along the western edge of the Tyrrhenian subducted slab: *Geological Society Special Publication*, 311, 193–212, doi:10.1144/SP311.7, 2009.
- Argnani, A.: Plate motion and the evolution of Alpine Corsica and Northern Apennines: *Tectonophysics*, 579, 207–219, doi:10.1016/j.tecto.2012.06.010, 2012.
- Argnani, A., and Frugoni, F.: Foreland deformation in the Central Adriatic and its bearing on the evolution of the Northern  
810 Apennines: *Annali di Geofisica*, XL, 771–780, 1997.
- Argnani, A., Rovere, M., and Bonazzi, C.: Tectonics of the Mattinata fault, offshore south Gargano (southern Adriatic Sea, Italy): Implications for active deformation and seismotectonics in the foreland of the Southern Apennines: *Bulletin of the Geological Society of America*, 121, 1421–1440, doi:10.1130/B26326.1, 2009.
- Babist, J., Handy, M.R., Konrad-Schmolke, M., and Hammerschmidt, K.: Precollisional, multistage exhumation of subducted  
815 continental crust: The Sesia Zone, western Alps: *Tectonics*, 25, 1–25, doi:10.1029/2005TC001927, 2006.
- Ballèvre, M., Manzotti, P., and Dal Piaz, G. V.: Pre-Alpine (Variscan) Inheritance: A Key for the Location of the Future Valaisan Basin (Western Alps): *Tectonics*, 37, 786–817, doi:10.1002/2017TC004633, 2018.
- Barnett-Moore, N., Font, E., and Neres, M.: A Reply to the Comment on “Assessing Discrepancies Between Previous Plate Kinematic Models of Mesozoic Iberia and Their Constraints” by Barnett-Moore Et Al.: *Tectonics*, 36, 3286–3297,  
820 doi:10.1002/2017TC004760, 2017.
- Barnett-Moore, N., Hosseinpour, M., and Maus, S.: Assessing discrepancies between previous plate kinematic models of Mesozoic Iberia and their constraints: *Tectonics*, 35, 1843–1862, doi:10.1002/2015TC004019, 2016.
- Barnett-Moore, N., Müller, D.R., Williams, S., Skogseid, J., and Seton, M.: A reconstruction of the North Atlantic since the earliest Jurassic: *Basin Research*, 30, 160–185, doi:10.1111/bre.12214, 2018.
- 825 Barrett, T.J., and Spooner, E.T.: Ophiolitic breccias associated with allochthonous oceanic crustal rocks in the east Ligurian Apennines, Italy - A comparison with observations from rifted oceanic ridges: *Earth and P*, 35, 79–91, 1977.
- Beltrando, M., Frasca, G., Compagnoni, R., and Vitale-Brovarone, A.: The Valaisan controversy revisited: Multi-stage folding of a Mesozoic hyper-extended margin in the Petit St. Bernard pass area (Western Alps): *Tectonophysics*, 579, 17–36, doi:10.1016/j.tecto.2012.02.010, 2012.
- 830 Beltrando, M., Manatschal, G., Mohn, G., Dal Piaz, G.V., Vitale Brovarone, A., and Masini, E.: Recognizing remnants of magma-poor rifted margins in high-pressure orogenic belts: The Alpine case study: *Earth-Science Reviews*, 131, 88–115, doi:10.1016/j.earscirev.2014.01.001, 2014.
- Beltrando, M., Rubatto, D., Compagnoni, R., and Lister, G.: Was the valaisan basin floored by oceanic crust? Evidence of permian magmatism in the Versoyen unit (Valaisan domain, NW ALPS): *Ofioliti*, 32, 85–99, doi:10.7892/boris.85691,

- 835 2007.
- Beltrando, M., Rubatto, D., and Manatschal, G.: From passive margins to orogens: The link between ocean-continent transition zones and (ultra)high-pressure metamorphism: *Geology*, 38, 559–562, doi:10.1130/G30768.1, 2010.
- Berger, A., and Bousquet, R.: Subduction-related metamorphism in the Alps: Review of isotopic ages based on petrology and their geodynamic consequences: *Geological Society Special Publication*, 298, 117–144, doi:10.1144/SP298.7, 2008.
- 840 Bernoulli, D., and Jenkyns, H.C.: Ancient oceans and continental margins of the Alpine-Mediterranean Tethys: Deciphering clues from Mesozoic pelagic sediments and ophiolites: *Sedimentology*, 56, 149–190, doi:10.1111/j.1365-3091.2008.01017.x, 2009.
- Bestani, L., Espurt, N., Lamarche, J., Bellier, O., and Hollender, F.: Reconstruction of the Provence Chain evolution, southeastern France: 35, 1506–1525, doi:10.1002/2016TC004115, 2016.
- 845 Bestani, L., Espurt, N., Lamarche, J., Floquet, M., Philip, J., Bellier, O., and Hollender, F.: Structural style and evolution of the Pyrenean-Provence thrust belt, SE France: *Bulletin de la Societe Geologique de France*, 186, 223–241, doi:10.2113/gssgfbull.186.4-5.223, 2015.
- Bill, M., O’Dogherty, L., Guex, J., Baumgartner, P.O., and Masson, H.: Radiolarite ages in Alpine-Mediterranean ophiolites: Constraints on the oceanic spreading and the Tethys-Atlantic connection: *Bulletin of the Geological Society of America*, 113, 129–143, doi:10.1130/0016-7606(2001)113<0129:RAIAMO>2.0.CO;2, 2001.
- 850 Billi, A., Faccenna, C., Bellier, O., Minelli, L., Neri, G., Piromallo, C., Presti, D., Scrocca, D., and Serpelloni, E.: Recent tectonic reorganization of the Nubia-Eurasia convergent boundary heading for the closure of the western Mediterranean: *Bulletin de la Societe Geologique de France*, 182, 279–303, doi:10.2113/gssgfbull.182.4.279, 2011.
- Bortolotti, V., and Principi, G.: Tethyan ophiolites and Pangea break-up: *Island Arc*, 14, 442–470, doi:10.1111/j.1440-1738.2005.00478.x, 2005.
- 855 Bouillin, J.P., Durand-Delga, M., and Olivier, P.: Betic-rifian and tyrrhenian arcs: Distinctive features, genesis and development stages: *Developments in Geotectonics*, 21, doi:10.1016/B978-0-444-42688-8.50017-5, 1986.
- Bousquet, R., Oberhänsli, R., Goffé, B., Wiederkehr, M., Koller, F., Schmid, S.M., Schuster, R., Engi, M., Berger, A., and Martinotti, G.: Metamorphism of metasediments at the scale of an orogen: A key to the Tertiary geodynamic evolution of the Alps: *Geological Society Special Publication*, 298, 393–411, doi:10.1144/SP298.18, 2008.
- 860 Bronner, A., Sauter, D., Manatschal, G., Péron-pinvidic, G., and Munsch, M.: Magmatic breakup as an explanation for magnetic anomalies at magma-poor rifted margins: *Nature Geoscience*, 4, 549–553, doi:DOI: 10.1038/NGEO1201, 2011.
- Brune, S.: Evolution of stress and fault patterns in oblique rift systems: 3-D numerical lithospheric-scale experiments from rift to breakup: *Geochemistry Geophysics Geosystems*, 15, 3392–3415, doi:10.1002/2014GC005446.Received, 2014.
- 865 Brune, S., Corti, G., and Ranalli, G.: Controls of inherited lithospheric heterogeneity on rift linkage: Numerical and analog models of interaction between the Kenyan and Ethiopian rifts across the Turkana depression: *Tectonics*, 36, 1767–1786, doi:10.1002/2017TC004739, 2017a.

- 870 Brune, S., Heine, C., Clift, P.D., and Perez-Gussinyé, M.: Rifted margin architecture and crustal rheology: Reviewing Iberia-  
Newfoundland, Central South Atlantic, and South China Sea: *Marine and Petroleum Geology*, 79, 257–281, 2017b.
- Brune, S., Heine, C., Pérez-Gussinyé, M., and Sobolev, S. V.: Rift migration explains continental margin asymmetry and  
crustal hyper-extension: *Nature Communications*, 5, 1–9, doi:10.1038/ncomms5014, 2014.
- Brune, S., Popov, A.A., and Sobolev, S. V.: Modeling suggests that oblique extension facilitates rifting and continental break-  
up: *Journal of Geophysical Research*, 117, B08402, doi:10.1029/2011JB008860, 2012.
- 875 Brune, S., Popov, A.A., and Sobolev, S. V.: Quantifying the thermo-mechanical impact of plume arrival on continental break-  
up: *Tectonophysics*, 604, 51–59, doi:10.1016/j.tecto.2013.02.009, 2013.
- Brune, S., Williams, S.E., Butterworth, N.P., and Müller, R.D.: Abrupt plate accelerations shape rifted continental margins:  
*Nature*, 536, 201–204, doi:10.1038/nature18319, 2016.
- Brune, S., Williams, S.E., and Dietmar Müller, R.: Oblique rifting: The rule, not the exception: *Solid Earth*, 9, 1187–1206,  
880 doi:10.5194/se-9-1187-2018, 2018.
- Canérot, J.: The pull apart-type Tardets-Mauléon Basin, a key to understand the formation of the Pyrenees: *Bulletin de la  
Societe Geologique de France*, 188, doi:10.1051/bsgf/2017198, 2017.
- Castellarin, A., Vai, G.B., and Cantelli, L.: The Alpine evolution of the Southern Alps around the Giudicarie faults: A Late  
Cretaceous to Early Eocene transfer zone: *Tectonophysics*, 414, 203–223, doi:10.1016/j.tecto.2005.10.019, 2006.
- 885 Catalano, R., Di Stefano, P., and Kozur, H.: Permian circumpacific deep-water faunas from the western Tethys (Sicily, Italy)-  
new evidences for the position of the Permian Tethys: *Palaeogeography, Palaeoclimatology, Palaeoecology*, 87, 75–108,  
doi:10.1016/0031-0182(91)90131-A, 1991.
- Channell, J.E.T., D’Argenio, B., and Horváth, F.: Adria, the African promontory, in mesozoic Mediterranean palaeogeography:  
*Earth Science Reviews*, 15, 213–292, doi:10.1016/0012-8252(79)90083-7, 1979.
- 890 Channell, J.E.T., and Kozur, H.W.: How many oceans? Meliata, Vardar, Pindos oceans in Mesozoic Alpine paleogeography:  
*Geology*, 25, 183–186, doi:10.1130/0091-7613(1997)025<0183:HMOMVA>2.3.CO;2, 1997.
- Choukroune, P.: Tectonic evolution of the Pyrenees: *Annu. Rev. Earth Planet. Sci.*, 20, 143–58, 1992.
- Cipriani, A., and Bottini, C.: Early Cretaceous tectonic rejuvenation of an Early Jurassic margin in the Central Apennines: The  
“Mt. Cosce Breccia”: *Sedimentary Geology*, 387, 57–74, doi:10.1016/j.sedgeo.2019.03.002, 2019a.
- 895 Cipriani, A., and Bottini, C.: Unconformities, neptunian dykes and mass-transport deposits as an evidence for Early Cretaceous  
syn-sedimentary tectonics: new insights from the Central Apennines: *Ital. J. Geosci.*, 138, 333–354, 2019b.
- Civile, D., Lodolo, E., Accettella, D., Geletti, R., Ben-Avraham, Z., Deponte, M., Facchin, L., Ramella, R., and Romeo, R.:  
The Pantelleria graben (Sicily Channel, Central Mediterranean): An example of intraplate “passive” rift: *Tectonophysics*,  
490, 173–183, doi:10.1016/j.tecto.2010.05.008, 2010.
- 900 Clerc, C., and Lagabriele, Y.: Thermal control on the modes of crustal thinning leading to mantle exhumation: Insights from  
the cretaceous pyrenean hot paleomargins: *Tectonics*, 33, 1340–1359, doi:10.1002/2013TC003471, 2014.
- Conti, P., Manatschal, G., and Pfister, M.: Synrift sedimentation, Jurassic and Alpine tectonics in the central Ortler Nappe,

- (Eastern Alps, Italy): *Eclogae Geologicae Helvetiae*, 87, 63–90, doi:10.5169/seals-167443, 1994.
- 905 Corti, G.: Continental rift evolution: From rift initiation to incipient break-up in the Main Ethiopian Rift, East Africa: *Earth Science Reviews*, 96, 1–53, doi:10.1016/j.earscirev.2009.06.005, 2009.
- Costa, S., and Caby, R.: Evolution of the Ligurian Tethys in the western Alps: Sm/Nd and U/Pb geochronology and rare-earth element geochemistry of the montgenèvre ophiolite (France): *Chemical Geology*, 175, 449–466, doi:10.1016/S0009-2541(00)00334-X, 2001.
- 910 D’Agostino, N., Avallone, A., Cheloni, D., D’Anastasio, E., Mantenuto, S., and Selvaggi, G.: Active tectonics of the Adriatic region from GPS and earthquake slip vectors: *Journal of Geophysical Research: Solid Earth*, 113, 1–19, doi:10.1029/2008JB005860, 2008.
- Dal Zilio, L., Kissling, E., Gerya, T., and van Dinther, Y.: Slab Rollback Orogeny Model: A Test of Concept: *Geophysical Research Letters*, 47, doi:10.1029/2020GL089917, 2020.
- 915 Dannowski, A. et al.: Ionian Abyssal Plain: A window into the Tethys oceanic lithosphere: *Solid Earth*, 10, 447–462, doi:10.5194/se-10-447-2019, 2019.
- Dannowski, A., Kopp, H., Grevenmeyer, I., Lange, Di., Thorwart, M., Bialas, J., and Wollatz-Vogt, M.: Seismic evidence for failed rifting in the Ligurian Basin, Western Alpine domain: *Solid Earth*, 11, 873–887, doi:10.5194/se-11-873-2020, 2020.
- 920 Debross, E.-J.: Le Flysch noir albo-cénomanién témoin de la structuration albiennne à sénoniennne de la Zone nord-pyrénéennne en Bigorre (Hautes-Pyrénées, France). *Bull. Soc. geol. France*, 8, VI, n°2, 273–285, doi:https://doi.org/10.2113/gssgfbull.VI.2.273, 1990.
- Decarlis, A., Manatschal, G., Hauptert, I., and Masini, E.: The tectono-stratigraphic evolution of distal, hyper-extended magma-poor conjugate rifted margins: Examples from the Alpine Tethys and Newfoundland-Iberia: *Marine and Petroleum Geology*, 68, 54–72, doi:10.1016/j.marpetgeo.2015.08.005, 2015.
- 925 Decrausaz, T., Müntener, O., Manzotti, P., Lafay R., and Spandler C.: Fossil oceanic core complexes in the Alps. New field, geochemical and isotopic constraints from the Tethyan Aiguilles Rouges Ophiolite (Val d’Hérens, Western Alps, Switzerland): *Swiss Journal of Geosciences*, 114:3, https://doi.org/10.1186/s00015-020-00380-4.
- Dewey, J.F., Helman, M.L., Knott, S.D., Turco, E., and Hutton, D.H.W.: Kinematics of the western Mediterranean: *Geological Society Special Publication*, 45, 265–283, doi:10.1144/GSL.SP.1989.045.01.15, 1989.
- 930 Dick, H.J.B., Lin, J., and Schouten, H.: An ultraslow-spreading class of ocean ridge: *Nature*, 426, 405–412, doi:10.1038/nature02128, 2003.
- Duretz, T., Gerya, T. V., and May, D.A.: Numerical modelling of spontaneous slab breakoff and subsequent topographic response: *Tectonophysics*, 502, 244–256, doi:10.1016/j.tecto.2010.05.024, 2011.
- 935 Ebinger, C.J., Jackson, J.A., Foster, A.N., and Hayward, N.J.: Extensional basin geometry and the elastic lithosphere: *Philosophical Transactions of the Royal Society A: Mathematical, Physical and Engineering Sciences*, 357, 741–765, doi:10.1098/rsta.1999.0351, 1999.

- Epin, M.E., Manatschal, G., Amman, M., Ribes, C., Clause, A., Guffon, T., and Lescanne, M.: Polyphase tectono-magmatic evolution during mantle exhumation in an ultra-distal, magma-poor rift domain: example of the fossil Platta ophiolite, SE Switzerland: *International Journal of Earth Sciences*, 108, 2443–2467, doi:10.1007/s00531-019-01772-0, 2019.
- 940 Espurt, N., Hippolyte, J.C., Saillard, M., and Bellier, O.: Geometry and kinematic evolution of a long-living foreland structure inferred from field data and cross section balancing, the Sainte-Victoire System, Provence, France: *Tectonics*, 31, 1–27, doi:10.1029/2011TC002988, 2012.
- Faccenna, C., Becker, T.W., Lucente, F.P., Jolivet, L., and Rossetti, F.: History of subduction and back-arc extension in the central Mediterranean: *Geophysical Journal International*, 145, 809–820, doi:10.1046/j.0956-540X.2001.01435.x, 2001.
- 945 Fassmer, K., Obermüller, G., Nagel, T.J., Kirst, F., Froitzheim, N., Sandmann, S., Miladinova, I., Fonseca, R.O.C., and Münker, C.: High-pressure metamorphic age and significance of eclogite-facies continental fragments associated with oceanic lithosphere in the Western Alps (Etirol-Levaz Slice, Valtourneche, Italy): *Lithos*, 252–253, 145–159, doi:10.1016/j.lithos.2016.02.019, 2016.
- Faupl, P. and Tollmann, A.: Die Roßfeldschichten: Ein Beispiel für Sedimentation im Bereich einer tektonisch aktiven  
950 Tiefseerinne aus der kalkalpinen Unterkreide, *Geologische Rundschau*, 68, 93-120, 1979.
- Faupl, P., and Wagreich, M.: Late Jurassic to Eocene Palaeogeography and Geodynamic Evolution of the Eastern Alps: *Mitteilungen der Österreichischen Geologischen Gesellschaft*, 92, 79–94, 1999.
- Ferrando, S., Bernoulli, D., and Compagnoni, R.: The Canavese zone (internal Western Alps): A distal margin of Adria: *Schweizerische Mineralogische und Petrographische Mitteilungen*, 84, 237–256, 2004.
- 955 Florineth, D., and Froitzheim, N.: Transition from continental to oceanic basement in the Tasna nappe (Engadine window, Graubünden, Switzerland): evidence for early Cretaceous opening of the Valais Ocean: *Schweizerische Mineralogische und Petrographische Mitteilungen*, 74, 437–448, 1994.
- Ford, M., Duchêne, S., Gasquet, D., and Vanderhaeghe, O.: Two-phase orogenic convergence in the external and internal SW Alps: *Journal of the Geological Society*, 163, 815–826, doi:10.1144/0016-76492005-034, 2006.
- 960 Frank, W., and Schlager, W.: Jurassic strike slip versus subduction in the Eastern Alps: *International Journal of Earth Sciences*, 95, 431–450, doi:10.1007/s00531-005-0045-7, 2006.
- Frisch, W.: Tectonic progradation and plate tectonic evolution of the Alps: *Tectonophysics*, 60, 121–139, doi:10.1016/0040-1951(79)90155-0, 1979.
- Frizon de Lamotte, D., Raulin, C., Mouchot, N., Wrobel-Daveau, J.-C., Blanpied, C., and Ringenbach, J.-C.: The southernmost  
965 margin of the Tethys realm during the Mesozoic and Cenozoic: Initial geometry and timing of the inversion processes: *Tectonics*, 30, n/a-n/a, doi:10.1029/2010tc002691, 2011.
- Froitzheim, N.: Synsedimentary and synorogenic normal faults within a thrust sheet of the Eastern Alps (Ortler zone, Graubünden, Switzerland): *Eclogae. geol. Helv.*, 81, 593–610, 1988.
- Froitzheim, N., and Eberli, G.P.: Extensional detachment faulting in the evolution of a Tethys passive continental margin,  
970 Eastern Alps, Switzerland: *Geological Society of America Bulletin*, 102, 1297–1308, doi:10.1130/0016-

7606(1990)102<1297, 1990.

- Froitzheim, N., and Manatschal, G.: Kinematics of Jurassic rifting, mantle exhumation, and passive-margin formation in the Austroalpine and Penninic nappes (eastern Switzerland): *Bulletin of the Geological Society of America*, 108, 1120–1133, doi:10.1130/0016-7606(1996)108<1120:KOJRME>2.3.CO;2, 1996.
- 975 Froitzheim, N., Schmid, S.M., and Frey, M.: Mesozoic paleogeography and the timing of eclogite facies metamorphism in the Alps: A working hypothesis: *Eclogae Geologicae Helveticae*, 89, 81–110, 1996.
- Gaina, C., Roest, W.R., and Müller, R.D.: Late Cretaceous–Cenozoic deformation of Northeast Asia: *Earth and Planetary Science Letters*, 197, 273–286, doi:10.1016/S0012-821X(02)00499-5, 2002.
- Gattacceca, J., Deino, A., Rizzo, R., Jones, D.S., Henry, B., Beaudoin, B., and Vadeboin, F.: Miocene rotation of Sardinia: New paleomagnetic and geochronological constraints and geodynamic implications: *Earth and Planetary Science Letters*, 980 258, 359–377, doi:10.1016/j.epsl.2007.02.003, 2007.
- Gawlick, H.J., and Missoni, S.: Middle-Late Jurassic sedimentary mélangé formation related to ophiolite obduction in the Alpine-Carpathian-Dinaridic Mountain Range: *Gondwana Research*, 74, 144–172, doi:10.1016/j.gr.2019.03.003, 2019.
- Gerya, T. V., Stöckhert, B., and Perchuk, A.L.: Exhumation of high-pressure metamorphic rocks in a subduction channel: A numerical simulation: *Tectonics*, 21, 6-1-6–19, doi:10.1029/2002tc001406, 2002.
- 985 Guerrera, F., Martín-Martín, M., and Tramontana, M.: Evolutionary geological models of the central-western peri-Mediterranean chains: a review: *International Geology Review*, doi:10.1080/00206814.2019.1706056, 2019.
- Guerrera, F., Martín-Algarra, A., and Perrone, V.: Late Oligocene-Miocene syn-/late-orogenic successions in Western and Central Mediterranean Chains from the Betic Cordillera to the Southern Apennines: *Terra Nova*, 5, 525–544, 990 doi:10.1111/j.1365-3121.1993.tb00302.x, 1993.
- Guillot, S., and Ménot, R.P.: Paleozoic evolution of the External Crystalline Massifs of the Western Alps: *Comptes Rendus - Geoscience*, 341, 253–265, doi:10.1016/j.crte.2008.11.010, 2009.
- Guillot, S., Di Paola, S., Ménot, R.P., Ledru, P., Spalla, M.I., Gosso, G., and Schwartz, S.: Suture zones and importance of strike-slip faulting for Variscan geodynamic reconstructions of the External Crystalline Massifs of the western Alps: 995 *Bulletin de la Societe Geologique de France*, 180, 483–500, doi:10.2113/gssgfbull.180.6.483, 2009.
- Gurnis, M., Turner, M., Zahirovic, S., DiCaprio, L., Spasojevic, S., Müller, R.D., Boyden, J., Seton, M., Manea, V.C., and Bower, D.J.: Plate tectonic reconstructions with continuously closing plates: *Computers and Geosciences*, 38, 35–42, doi:10.1016/j.cageo.2011.04.014, 2012.
- Gurnis, M., Yang, T., Cannon, J., Turner, M., Williams, S., Flament, N., and Müller, R.D.: Global tectonic reconstructions with continuously deforming and evolving rigid plates: *Computers and Geosciences*, 1000 116, 32–41, doi:10.1016/j.cageo.2018.04.007, 2018.
- Hamai, L., Petit, C., Le Pourhiet, L., Yelles-Chaouche, A., Déverchère, J., Beslier, M.O., and Abtout, A.: Towards subduction inception along the inverted North African margin of Algeria? Insights from thermo-mechanical models: *Earth and Planetary Science Letters*, 501, 13–23, doi:10.1016/j.epsl.2018.08.028, 2018.

- 1005 Handy, M.R., M. Schmid, S., Bousquet, R., Kissling, E., and Bernoulli, D.: Reconciling plate-tectonic reconstructions of Alpine Tethys with the geological-geophysical record of spreading and subduction in the Alps: *Earth-Science Reviews*, 102, 121–158, doi:10.1016/j.earscirev.2010.06.002, 2010.
- Handy, M.R., Ustaszewski, K., and Kissling, E.: Reconstructing the Alps–Carpathians–Dinarides as a key to understanding switches in subduction polarity, slab gaps and surface motion: *International Journal of Earth Sciences*, 104, doi:10.1007/s00531-014-1060-3, 2015.
- 1010 Hart, N.R., Stockli, D.F., Lavier, L.L., and Hayman, N.W.: Thermal evolution of a hyperextended rift basin, Mauléon Basin, western Pyrenees: *Tectonics*, 36, 1103–1128, doi:10.1002/2016TC004365, 2017.
- Heine, C., Zoethout, J., and Müller, R.D.: Kinematics of the South Atlantic rift: *Solid Earth*, 4, 215–253, doi:10.5194/se-4-215-2013, 2013.
- 1015 Henry, P., Azambre, B., Montigny, R., Rossy, M., and Stevenson, R.K.: Late mantle evolution of the Pyrenean sub-continental lithospheric mantle in the light of new <sup>40</sup>Ar-<sup>39</sup>Ar and Sm-Nd ages on pyroxenites and periodotites (Pyrenees, France): *Tectonophysics*, 296, 103–123, doi:10.1016/S0040-1951(98)00139-5, 1998.
- Hermann, J., and Müntener, O.: Extension-related structures in the Malenco-Margna-system: Implications for paleogeography and consequences for rifting and Alpine tectonics: *Schweizerische Mineralogische und Petrographische Mitteilungen*, 1020 76, 501–519, doi:10.5169/seals-57712, 1996.
- Horváth, F., Bada, G., Szafián, P., Tari, G., Ádám, A., and Cloetingh, S.: Formation and deformation of the Pannonian Basin: Constraints from observational data: *Geological Society Memoir*, 32, 191–206, doi:10.1144/GSL.MEM.2006.032.01.11, 2006.
- Hosseinpour, M., Williams, S., Seton, M., Barnett-Moore, N., and Müller, R.D.: Tectonic evolution of Western Tethys from 1025 Jurassic to present day: coupling geological and geophysical data with seismic tomography models: *International Geology Review*, 58, 1616–1645, doi:10.1080/00206814.2016.1183146, 2016.
- Huisman, R.S., and Beaumont, C.: Symmetric and asymmetric lithospheric extension: Relative effects of frictional-plastic and viscous strain softening: *Journal of Geophysical Research*, 108, 2496, doi:10.1029/2002JB002026, 2003.
- Jammes, S., and Lavier, L.L.: Effect of contrasting strength from inherited crustal fabrics on the development of rifting 1030 margins: *Geosphere*, 15, 407–422, doi:10.1130/GES01686.1, 2019.
- Jammes, S., Manatschal, G., Lavier, L., and Masini, E.: Tectonosedimentary evolution related to extreme crustal thinning ahead of a propagating ocean: Example of the western Pyrenees: *Tectonics*, 28, 1–24, doi:10.1029/2008TC002406, 2009.
- Johansen, S.E., Panzner, M., Mittet, R., Amundsen, H.E.F., Lim, A., Vik, E., Landrø, M., and Arntsen, B.: Deep electrical imaging of the ultraslow-spreading Mohns Ridge: *Nature*, 567, 379–383, doi:10.1038/s41586-019-1010-0, 2019.
- 1035 Jolivet, L., Faccenna, C., Goffé, B., Mattei, M., Rossetti, F., Brunet, C., Storti, F., Funicello, R., Cadet, J.p>, d'Agostino, N., and Parra, T.: Midcrustal shear zones in postorogenic extension: Example from the northern Tyrrhenian Sea: *Journal of Geophysical Research: Solid Earth*, 103, 12123–12160, doi:10.1029/97jb03616, 1998.
- Jolivet, L., Gorini, C., Smit, J., and Leroy, S.: back-arc basins: the Gulf of Lion margin;



doi:10.1002/2014TC003570.Received, 2015.

- 1040 Joseph, P., Cabrol, C., and Friès, G.: Titled blocks and submarine passes in the Banon graben (France, SE) during Apto-Albian times: a paleotopography directly induced by strike-slip synsedimentary tectonics: *C. R. Acad. Sci. Paris, Sciences de la terre et des planètes*, t. 304, Sé, 447–452, 1987.
- Kaczmarek, M.A., Müntener, O., and Rubatto, D.: Trace element chemistry and U-Pb dating of zircons from oceanic gabbros and their relationship with whole rock composition (Lanzo, Italian Alps): *Contributions to Mineralogy and Petrology*, 1045 155, 295–312, doi:10.1007/s00410-007-0243-3, 2008.
- Kästle, E.D., Rosenberg, C., Boschi, L., Bellahsen, N., Meier, T., and El-Sharkawy, A.: Slab break-offs in the Alpine subduction zone: *International Journal of Earth Sciences*, 109, 587–603, doi:10.1007/s00531-020-01821-z, 2020.
- Kiss, D., Candiotti, L.G., Duretz, T., and Schmalholz, S.M.: Thermal softening induced subduction initiation at a passive margin: *Geophysical Journal International*, 220, 2068–2073, doi:10.1093/gji/ggz572, 2020.
- 1050 Kneller, E.A., Johnson, C.A., Karner, G.D., Einhorn, J., and Queffelec, T.A.: Inverse methods for modeling non-rigid plate kinematics: Application to mesozoic plate reconstructions of the Central Atlantic: *Computers and Geosciences*, 49, 217–230, doi:10.1016/j.cageo.2012.06.019, 2012.
- Kurz, W., Neubauer, F., and Unzog, W.: Evolution of Alpine eclogites in the Eastern Alps: Implications for Alpine Geodynamics: *Physics and Chemistry of the Earth, Part A: Solid Earth and Geodesy*, 24, 667–674, doi:10.1016/S1464-1055 1895(99)00097-6, 1999.
- Labails, C., Olivet, J.-L., Aslanian, D., and Roest, W.R.: An alternative early opening scenario for the Central Atlantic Ocean: *Earth and Planetary Science Letters*, 297, 355–368, doi:10.1016/j.epsl.2010.06.024, 2010.
- Lacombe, O., and Jolivet, L.: Structural and kinematic relationships between Corsica and the Pyrenees-Provence domain at the time of the Pyrenean orogeny: *Tectonics*, 24, 1–20, doi:10.1029/2004TC001673, 2005.
- 1060 Lagabriele, Y., and Cannat, M.: Alpine Jurassic ophiolites resemble the modern central Atlantic basement: *Geology*, 18, 319–322, 1990.
- Lagabriele, Y., and Lemoine, M.: Alpine, Corsican and Apennine ophiolites: the slow-spreading ridge model: *C. R. Acad. Sci. Paris, Sciences de la terre et des planètes*, 325, 909–920, 1997.
- Lahondère, D., and Guerrot, C.: Datation SM-Nd du métamorphisme éclogitique en Corse alpine: un argument pour l’existence au Crétacé supérieur d’une zone de subduction active localisée sous le bloc corso-sarde: *Géologie de la France*, 3–11, 1997.
- 1065 Lavier, L.L., and Manatschal, G.: A mechanism to thin the continental lithosphere at magma-poor margins: *Nature*, 440, 324–328, doi:10.1038/nature04608, 2006.
- Le Breton, E., Handy, M.R., Molli, G., and Ustaszewski, K.: Post-20 Ma Motion of the Adriatic Plate: New Constraints From Surrounding Orogens and Implications for Crust-Mantle Decoupling: *Tectonics*, 36, 3135–3154, doi:10.1002/2016TC004443, 2017.
- 1070 Lemoine, M., Bas, T., Arnaud-Vanneau, A., Arnaud, H., Dumont, T., Gidon, M., Bourbon, M., de Graciansky, P.-C.,

Rudkiewicz, J.-L., Megard-Galli, J., and Tricart, P.: The continental margin of the Mesozoic Tethys in the Western Alps: *Marine and Petroleum Geology*, 3, 179–199, doi:10.1016/0264-8172(86)90044-9, 1986.

1075 Li, X.H., Faure, M., Lin, W., and Manatschal, G.: New isotopic constraints on age and magma genesis of an embryonic oceanic crust: The Chenaillet Ophiolite in the Western Alps: *Lithos*, 160–161, 283–291, doi:10.1016/j.lithos.2012.12.016, 2013.

Liati, A., and Froitzheim, N.: Assessing the Valais ocean, Western Alps: U-Pb SHRIMP zircon geochronology of eclogite in the Balma unit, on top of the Monte Rosa nappe: *European Journal of Mineralogy*, 18, 299–308, doi:10.1127/0935-1221/2006/0018-0299, 2006.

1080 Liati, A., Froitzheim, N., and Fanning, C.M.: Jurassic ophiolites within the Valais domain of the Western and Central Alps: Geochronological evidence for re-rifting of oceanic crust: *Contributions to Mineralogy and Petrology*, 149, 446–461, doi:10.1007/s00410-005-0658-7, 2005.

Loprieno, A., Bousquet, R., Bucher, S., Ceriani, S., Dalla Torre, F.H., Fügenschuh, B., and Schmid, S.M.: The Valais units in Savoy (France): A key area for understanding the palaeogeography and the tectonic evolution of the Western Alps: *International Journal of Earth Sciences*, 100, 963–992, doi:10.1007/s00531-010-0595-1, 2011.

1085 Macchiavelli, C., Vergés, J., Schettino, A., Fernández, M., Turco, E., Casciello, E., Torne, M., Pierantoni, P.P., and Tunini, L.: A New Southern North Atlantic Isochron Map: Insights Into the Drift of the Iberian Plate Since the Late Cretaceous: *Journal of Geophysical Research: Solid Earth*, 122, 9603–9626, doi:10.1002/2017JB014769, 2017.

Maffione, M., and van Hinsbergen, D.J.J.: Reconstructing Plate Boundaries in the Jurassic Neo-Tethys From the East and West Vardar Ophiolites (Greece and Serbia): *Tectonics*, 37, 858–887, doi:10.1002/2017TC004790, 2018.

1090 Manatschal, G.: New models for evolution of magma-poor rifted margins based on a review of data and concepts from West Iberia and the Alps: *International Journal of Earth Sciences*, 93, 432–466, doi:10.1007/s00531-004-0394-7, 2004.

Manatschal, G., and Bernoulli, D.: Architecture and tectonic evolution of nonvolcanic margins: Present-day Galicia and ancient Adria: *Tectonics*, 18, 1099–1119, doi:10.1029/1999TC900041, 1999.

1095 Manatschal, G., Engström, A., Desmurs, L., Schaltegger, U., Cosca, M., Müntener, O., and Bernoulli, D.: What is the tectono-metamorphic evolution of continental break-up: The example of the Tasna Ocean-Continent Transition: *Journal of Structural Geology*, 28, 1849–1869, doi:10.1016/j.jsg.2006.07.014, 2006.

Manatschal, G., and Müntener, O.: A type sequence across an ancient magma-poor ocean-continent transition: the example of the western Alpine Tethys ophiolites: *Tectonophysics*, 473, 4–19, doi:10.1016/j.tecto.2008.07.021, 2009.

1100 Manzotti, P., Ballèvre, M., Zucali, M., Robyr, M., and Engi, M.: The tectonometamorphic evolution of the Sesia–Dent Blanche nappes (internal Western Alps): review and synthesis: *Swiss Journal of Geosciences*, 107, 309–336, doi:10.1007/s00015-014-0172-x, 2014.

Manzotti, P., Bosse, V., Pitra, P., Robyr, M., Schiavi, F., and Ballèvre, M.: Exhumation rates in the Gran Paradiso Massif (Western Alps) constrained by in situ U–Th–Pb dating of accessory phases (monazite, allanite and xenotime): *Contributions to Mineralogy and Petrology*, 173, 1–28, doi:10.1007/s00410-018-1452-7, 2018.

1105 Marroni, M., Molli, G., Montanini, A., and Tribuzio, R.: The association of continental crust rocks with ophiolites in the

northern Apennines (Italy): implications for the continent-ocean transition in the Western Tethys: *Tectonophysics*, 292, 43–66, doi:10.1016/S0040-1951(98)00060-2, 1998.

1110 Marroni, M., Monechi, S., Perilli, N., Principi, G., and Treves, B.: Late Cretaceous flysch deposits of the Northern Apennines, Italy: age of inception of orogenesis-controlled sedimentation: *Cretaceous Research*, 13, 487–504, doi:10.1016/0195-6671(92)90013-G, 1992.

Martin, L.A.J., Rubatto, D., Vitale Brovarone, A., and Hermann, J.: Late Eocene lawsonite-eclogite facies metasomatism of a granulite sliver associated to ophiolites in Alpine Corsica: *Lithos*, 125, 620–640, doi:10.1016/j.lithos.2011.03.015, 2011.

1115 Masetti, D., Fantoni, R., Romano, R., Sartorio, D., and Trevisani, E.: Tectonostratigraphic evolution of the Jurassic extensional basins of the eastern southern Alps and Adriatic foreland based on an integrated study of surface and subsurface data: *AAPG Bulletin*, 96, 2065–2089, doi:10.1306/03091211087, 2012.

Masini, E., Manatschal, G., and Mohn, G.: The Alpine Tethys rifted margins: Reconciling old and new ideas to understand the stratigraphic architecture of magma-poor rifted margins: *Sedimentology*, 60, 174–196, doi:10.1111/sed.12017, 2013.

1120 Masini, E., Manatschal, G., Tugend, J., Mohn, G., and Flament, J.M.: The tectono-sedimentary evolution of a hyper-extended rift basin: The example of the Arzacq-Mauléon rift system (Western Pyrenees, SW France): *International Journal of Earth Sciences*, 103, 1569–1596, doi:10.1007/s00531-014-1023-8, 2014.

Masson, H., Bussy, F., Eichenberger, M., Giroudd, N., Meilhac, C., and Presniakov, S.: Early Carboniferous age of the Versoyen ophiolites and consequences: Non-existence of a “Valais ocean” (Lower Penninic, western Alps): *Bulletin de la Societe Geologique de France*, 179, 337–355, doi:10.2113/gssgfbull.179.4.337, 2008.

1125 Matte, P.: The Variscan collage and orogeny (480-290 Ma) and the tectonic definition of the Armorica microplate: A review: *Terra Nova*, 13, 122–128, doi:10.1046/j.1365-3121.2001.00327.x, 2001.

Matter, A., Homewood, P., Caron, C., Rigassi, D., Van Stuijvenberg, J., Weidmann, M., and Winkler, W.: Flysch and Molasse of Western and Central Switzerland: *Geology of Switzerland, a Guide Book*, 261–293, 1980.

1130 McCarthy, A., Chelle-Michou, C., Müntener, O., Arculus, R., and Blundy, J.: Subduction initiation without magmatism: The case of the missing Alpine magmatic arc: *Geology*, 46, 1059–1062, doi:10.1130/G45366.1, 2018.

McCarthy, A., Tugend, J., Mohn, G., Candioti, L., Chelle-Michou, C., Arculus, R., Schmalholz, S.M., and Müntener, O.: A case of Ampferer-type subduction and consequences for the Alps and the Pyrenees: *American Journal of Science*, 320, 313–372, doi:10.2475/04.2020.01, 2020.

1135 McClay, K., Munoz, J.A., and García-Senz, J.: Extensional salt tectonics in a contractional orogen: A newly identified tectonic event in the Spanish Pyrenees: *Geology*, 32, 737–740, doi:10.1130/G20565.1, 2004.

McKenzie, D.: Some remarks on the development of sedimentary basins: *Earth and Planetary Science Letters*, 40, 25–32, doi:10.1016/0012-821X(78)90071-7, 1978.

Michard, A., Chalouan, A., Feinberg, H., Goffé, B., and Montigny, R.: How does the Alpine belt end between Spain and Morocco? *Bulletin de la Societe Geologique de France*, 173, 3–15, doi:10.2113/173.1.3, 2002.

1140 Michard, A., Mokhtari, A., Chalouan, A., Saddiqi, O., Rossi, P., and Rjimat, E.C.: New ophiolite slivers in the External Rif

belt, and tentative restoration of a dual Tethyan suture in the western Maghrebides: *Bulletin de la Societe Geologique de France*, 185, 313–328, doi:10.2113/gssgfbull.185.5.313, 2014.

- 1145 Michard, A., Negro, F., Saddiqi, O., Bouybaouene, M.L., Chalouan, A., Montigny, R., and Goffé, B.: Pressure-temperature-time constraints on the Maghrebide mountain building: Evidence from the Rif-Betic transect (Morocco, Spain), Algerian correlations, and geodynamic implications: *Comptes Rendus - Geoscience*, 338, 92–114, doi:10.1016/j.crte.2005.11.011, 2006.
- Mohn, G., Manatschal, G., Beltrando, M., Masini, E., and Kuszniir, N.: Necking of continental crust in magma-poor rifted margins: Evidence from the fossil Alpine Tethys margins: *Tectonics*, 31, 1–28, doi:10.1029/2011TC002961, 2012.
- 1150 Mohn, G., Manatschal, G., Müntener, O., Beltrando, M., and Masini, E.: Unravelling the interaction between tectonic and sedimentary processes during lithospheric thinning in the Alpine Tethys margins: *International Journal of Earth Sciences*, 99, 75–101, doi:10.1007/s00531-010-0566-6, 2010.
- Molli, G.: Northern Apennine-Corsica orogenic system: An updated overview: *Geological Society Special Publication*, 298, 413–442, doi:10.1144/SP298.19, 2008.
- 1155 Molli, G., Brogi, A., Caggianelli, A., Capezzuoli, E., Liotta, D., Spina, A., and Zibra, I.: Late Palaeozoic tectonics in Central Mediterranean: a reappraisal: *Swiss Journal of Geosciences*, 113, 1–32, doi:10.1186/s00015-020-00375-1, 2020.
- Molli, G., and Malavieille, J.: Orogenic processes and the Corsica / Apennines geodynamic evolution : insights from Taiwan: *International Journal of Earth Sciences*, 100, 1207–1224, doi:10.1007/s00531-010-0598-, 2011.
- 1160 Montecat, C., Janin, M.C., and Barrier, P.: L'accident du Toulourenc : Une limite tectonique entre la plate-forme provençale et le Bassin vocontien à l'Aptien-Albien (SE France): *Comptes Rendus - Geoscience*, 336, 1301–1310, doi:10.1016/j.crte.2004.05.002, 2004.
- Moulas, E., Schmalholz, S.M., Podladchikov, Y., Tajčmanová, L., Kostopoulos, D., and Baumgartner, L.: Relation between mean stress, thermodynamic, and lithostatic pressure: *Journal of Metamorphic Geology*, 37, 1–14, doi:10.1111/jmg.12446, 2019.
- 1165 Mouthereau, F., Filleaudeau, P.Y., Vacherat, A., Pik, R., Lacombe, O., Fellin, M.G., Castellort, S., Christophoul, F., and Masini, E.: Placing limits to shortening evolution in the Pyrenees: Role of margin architecture and implications for the Iberia/Europe convergence: *Tectonics*, 33, 2283–2314, doi:10.1002/2014TC003663, 2014.
- Müller, R.D., Zahirovic, S., Williams, S.E., Cannon, J., Seton, M., Bower, D.J., Tetley, M.G., Heine, C., Le Breton, E., Liu, S., Russel, S.H.J., Yang, T., Leonard, J., and Gurnis, M.: A Global Plate Model Including Lithospheric Deformation Along Major Rifts and Orogens Since the Triassic: *Tectonics*, 38, 1884–1907, doi:10.1029/2018TC005462, 2019.
- 1170 Müller, R.D., Cannon, J., Qin, X., Watson, R.J., Gurnis, M., Williams, S., Pfaffelmoser, T., Seton, M., Russell, S.H.J., and Zahirovic, S.: GPlates: Building a Virtual Earth Through Deep Time: *Geochemistry, Geophysics, Geosystems*, 19, 2243–2261, doi:10.1029/2018GC007584, 2018.
- Müller, R.D., Roest, W.R., Royer, J.-Y., Gahagan, L.M., and Sclater, J.G.: Digital isochrons of the world's ocean floor: *Journal of Geophysical Research: Solid Earth*, 102, 3211–3214, doi:10.1029/96jb01781, 1997.

- 1175 Müller, R.D., Royer, J.Y., Cande, S.C., Roest, W.R., and Maschenkov, S.: New constraints on the late cretaceous/tertiary plate tectonic evolution of the caribbean: *Sedimentary Basins of the World*, 4, 33–59, doi:10.1016/S1874-5997(99)80036-7, 1999.
- Müntener, O., and Hermann, J.: The role of lower crust and continental upper mantle during formation of non-volcanic passive margins: Evidence from the Alps: *Geological Society Special Publication*, 187, 267–288, doi:10.1144/GSL.SP.2001.187.01.13, 2001.
- 1180 Nagel, T.J., Herwartz, D., Rexroth, S., Münker, C., Froitzheim, N., and Kurz, W.: Lu-Hf dating, petrography, and tectonic implications of the youngest Alpine eclogites (Tauern Window, Austria): *Lithos*, 170–171, 179–190, doi:10.1016/j.lithos.2013.02.008, 2013.
- Neres, M., Font, E., Miranda, J.M., Camps, P., Terrinha, P., and Mirão, J.: Reconciling Cretaceous paleomagnetic and marine magnetic data for Iberia: New Iberian paleomagnetic poles: *Journal of Geophysical Research: Solid Earth*, 117, 1–21, doi:10.1029/2011JB009067, 2012.
- 1185 Neres, M., Miranda, J.M., and Font, E.: Testing Iberian kinematics at Jurassic-Cretaceous times: *Tectonics*, 32, 1312–1319, doi:10.1002/tect.20074, 2013.
- Neubauer, F., Dallmeyer, R.D., Dunkl, I., and Schirnik, D.: Late Cretaceous exhumation of the metamorphic Gleinalm dome, Eastern Alps: kinematics, cooling history and sedimentary response in a sinistral wrench corridor. *Tectonophysics*, 242, 79–98, [https://doi.org/10.1016/0040-1951\(94\)00154-2](https://doi.org/10.1016/0040-1951(94)00154-2), 1995.
- 1190 Nirrengarten, M., Manatschal, G., Tugend, J., Kuszniir, N.J., and Sauter, D.: Nature and origin of the J-magnetic anomaly offshore Iberia–Newfoundland: implications for plate reconstructions: *Terra Nova*, 29, 20–28, doi:10.1111/ter.12240, 2017.
- 1195 Oliva-Urcia, B., Casas, A.M., Soto, R., Villalafín, J.J., and Kodama, K.: A transtensional basin model for the Organyà basin (central southern Pyrenees) based on magnetic fabric and brittle structures: *Geophysical Journal International*, 184, 111–130, doi:10.1111/j.1365-246X.2010.04865.x, 2011.
- Olivet, J.: La cinématique de la plaque ibérique: *Bulletin des Centres de Recherches Exploration-Production Elf-Aquitaine*, 20, 131–195, 1996.
- 1200 Pérez-Gussinyé, M., Morgan, J.P., Reston, T.J., and Ranero, C.R.: The rift to drift transition at non-volcanic margins: Insights from numerical modelling: *Earth and Planetary Science Letters*, 244, 458–473, doi:10.1016/j.epsl.2006.01.059, 2006.
- Peybernés, B., and Souquet, P.: Basement blocks and tecto-sedimentary evolution in the Pyrenees during Mesozoic times: *Geological Magazine*, 121, 397–405, doi:10.1017/S0016756800029927, 1984.
- Picazo, S., Müntener, O., Manatschal, G., Bauville, A., Karner, G., and Johnson, C.: Mapping the nature of mantle domains in Western and Central Europe based on clinopyroxene and spinel chemistry: Evidence for mantle modification during an extensional cycle: *Lithos*, 266–267, 233–263, doi:10.1016/j.lithos.2016.08.029, 2016.
- 1205 Piccardo, G.B., and Guarnieri, L.: Alpine peridotites from the Ligurian Tethys: An updated critical review: *International Geology Review*, 52, 1138–1159, doi:10.1080/00206810903557829, 2010.

- 1210 Le Pichon, X., Bergerat, F., and Roulet, M.-J.: Plate kinematics and tectonics leading to the Alpine belt formation; A new analysis: Geological Society of America, Spec. Pap., 111–131, 1988.
- Pleuger, J., and Podladchikov, Y.Y.: A purely structural restoration of the NFP20-East cross section and potential tectonic overpressure in the Adula nappe (central Alps): *Tectonics*, 33, 656–685, doi:10.1002/2013TC003409, 2014.
- 1215 Popov, A.A., and Sobolev, S. V.: SLIM3D: A tool for three-dimensional thermomechanical modeling of lithospheric deformation with elasto-visco-plastic rheology: *Physics of the Earth and Planetary Interiors*, 171, 55–75, doi:10.1016/j.pepi.2008.03.007, 2008.
- Ratschbacher, L., Merle, O., Davy, P., and Cobbold, P.: Lateral extrusion in the Eastern Alps, Part 1: boundary conditions and experiments scaled for gravity: *Tectonics*, 10, 245–256, 1991.
- Reuber, G., Kaus, B.J.P., Schmalholz, S.M., and White, R.W.: Nonlithostatic pressure during subduction and collision and the formation of (ultra)high-pressure rocks: *Geology*, 44, 343–346, doi:10.1130/G37595.1, 2016.
- 1220 Ribes, C., Manatschal, G., Ghienne, J.F., Karner, G.D., Johnson, C.A., Figueredo, P.H., Incerpi, N., and Epin, M.E.: The syn-rift stratigraphic record across a fossil hyper-extended rifted margin: the example of the northwestern Adriatic margin exposed in the Central Alps: *International Journal of Earth Sciences*, 108, 2071–2095, doi:10.1007/s00531-019-01750-6, 2019.
- 1225 Ribes, C., Petri, B., Ghienne, J.F., Manatschal, G., Galster, F., Karner, G.D., Figueredo, P.H., Johnson, C.A., and Karpoff, A.M.: Tectono-sedimentary evolution of a fossil ocean-continent transition: Tasma nappe, central Alps (SE Switzerland): *Bulletin of the Geological Society of America*, 132, 1427–1446, doi:10.1130/B35310.1, 2020.
- Rosenbaum, G., and Lister, G.S.: Neogene and Quaternary rollback evolution of the Tyrrhenian Sea, the Apennines, and the Sicilian Maghrebides: *Tectonics*, 23, doi:10.1029/2003TC001518, 2004.
- 1230 Rosenbaum, G., Lister, G.S., and Duboz, C.: Relative motion of Africa, Iberia and Europe during Alpine orogeny: *Tectonophysics*, 359, 117–129, 2002.
- Rosenberg, C.L.: Shear zones and magma ascent: A model based on a review of the Tertiary magmatism in the Alps: *Tectonics*, 23, doi:10.1029/2003TC001526, 2004.
- Royden, L., and Burchfiel, B.C.: Are systematic variations in thrust belt style related to plate boundary processes? (The western Alps versus the Carpathians): *Tectonics*, 8, 51–61, doi:10.1029/TC008i001p00051, 1989.
- 1235 Rubatto, D., Gebauer, D., and Fanning, M.: Jurassic formation and Eocene subduction of the Zermatt-Saas-Fee ophiolites: Implications for the geodynamic evolution of the Central and Western Alps: *Contributions to Mineralogy and Petrology*, 132, 269–287, doi:10.1007/s004100050421, 1998.
- Ruh, J.B., Le Pourhiet, L., Agard, P., Burov, E., and Gerya, T.: Tectonic slicing of subducting oceanic crust along plate interfaces: Numerical modeling: *Geochemistry, Geophysics, Geosystems*, 16, 3505–3531, doi:10.1002/2015GC005998, 2015.
- 1240 Sandmann, S., Nagel, T.J., Herwartz, D., Fonseca, R.O.C., Kurzwaski, R.M., Münker, C., and Froitzheim, N.: Lu–Hf garnet systematics of a polymetamorphic basement unit: new evidence for coherent exhumation of the Adula Nappe (Central

Alps) from eclogite-facies conditions: *Contributions to Mineralogy and Petrology*, 168, 1–21, doi:10.1007/s00410-014-1075-6, 2014.

1245 Scharf, A., Handy, M.R., Favaro, S., Schmid, S.M., and Bertrand, A.: Modes of orogen-parallel stretching and extensional exhumation in response to microplate indentation and roll-back subduction (Tauern Window, Eastern Alps): *International Journal of Earth Sciences*, 102, 1627–1654, doi:10.1007/s00531-013-0894-4, 2013a.

Scharf, A., Handy, M.R., Ziemann, M.A., and Schmid, S.M.: Peak-temperature patterns of polyphase metamorphism resulting from accretion, subduction and collision (eastern tauern window, european alps) - a study with raman microspectroscopy on carbonaceous material (RSCM): *Journal of Metamorphic Geology*, 31, 863–880, doi:10.1111/jmg.12048, 2013b.

1250 Schettino, A., and Scotese, C.R.: Apparent polar wander paths for the major continents (200 Ma to the present day): A palaeomagnetic reference frame for global plate tectonic reconstructions: *Geophysical Journal International*, 163, 727–759, doi:10.1111/j.1365-246X.2005.02638.x, 2005.

Schettino, A., and Turco, E.: Tectonic history of the Western Tethys since the Late Triassic: *Bulletin of the Geological Society of America*, 123, 89–105, doi:10.1130/B30064.1, 2011.

Schmalholz, S.M., and Podladchikov, Y.Y.: Tectonic overpressure in weak crustal-scale shear zones and implications for the exhumation of high-pressure rocks: *Geophysical Research Letters*, 40, 1984–1988, doi:10.1002/grl.50417, 2013.

Schmid, S.M., Fügenschuh, B., Kounov, A., Matenco, L., Nievergelt, P., Oberhänsli, R., Pleuger, J., Schefer, S., Schuster, R., Tomljenovic, B., Ustaszewski, K., van Hinsbergen, D.J.J.: Tectonic units of the Alpine collision zone between Eastern Alps and western Turkey: *Gondwana Research*, 78, 308–374, doi:10.1016/j.gr.2019.07.005, 2020.

1260 Schmid, S.M., Bernoulli, D., Fügenschuh, B., Matenco, L., Schefer, S., Schuster, R., Tischler, M., and Ustaszewski, K.: The Alpine-Carpathian-Dinaridic orogenic system: Correlation and evolution of tectonic units: *Swiss Journal of Geosciences*, 101, 139–183, doi:10.1007/s00015-008-1247-3, 2008.

Schmid, S.M., Pfiffner, O.A., Froitzheim, N., Schönborn, G., and Kissling, E.: Geophysical-geological transect and tectonic evolution of the Swiss-Italian Alps: *Tectonics*, 15, 1036–1064, doi:10.1029/96TC00433, 1996.

1265 Schuster, R., and Frank, W.: Metamorphic evolution of the Austroalpine units east of the Tauern Window : by: *Mitt. Geol. Bergbau Stud. Österr.*, 42, 37–58, 1999.

Scisciani, V., and Calamita, F.: Active intraplate deformation within Adria: Examples from the Adriatic region: *Tectonophysics*, 476, 57–72, doi:10.1016/j.tecto.2008.10.030, 2009.

1270 Séranne, M.: The Gulf of Lion continental margin (NW Mediterranean) revisited by IBS: an overview: *Geological Society Special Publication*, 156, 15–36, doi:10.1144/GSL.SP.1999.156.01.03, 1999.

Sibuet, J.-C., Srivastav, S.P., and Spakman, W.: Pyrenean orogeny and plate kinematics: *Journal of Geophysical Research*, 109, 1–18, doi:10.1029/2003JB002514, 2004.

Sieberer, A.-K., Ortner, H. (2020): Influence of Penninic rifting on the tectonic evolution of the northern Austroalpine margin. ID 296. GeoUtrecht 2020, 24.-26. August 2020, Utrecht, Netherlands. ([https://www.conftool.pro/geoutrecht2020/index.php?page=browseSessions&form\\_session=159](https://www.conftool.pro/geoutrecht2020/index.php?page=browseSessions&form_session=159)).

- Sinclair, H.D.: Tectonostratigraphic model for underfilled peripheral foreland basins: An Alpine perspective: *Bulletin of the Geological Society of America*, 109, 324–346, doi:10.1130/0016-7606(1997)109<0324:TMFUPF>2.3.CO;2, 1997.
- 1280 Spakman, W., Chertova, M. V., Van Den Berg, A., and Van Hinsbergen, D.J.J.: Puzzling features of western Mediterranean tectonics explained by slab dragging: *Nature Geoscience*, 11, 211–216, doi:10.1038/s41561-018-0066-z, 2018.
- Speranza, F., Minelli, L., Pignatelli, A., and Chiappini, M.: The Ionian Sea: The oldest in situ ocean fragment of the world? *Journal of Geophysical Research B: Solid Earth*, 117, 1–13, doi:10.1029/2012JB009475, 2012.
- 1285 Speranza, F., Villa, I.M., Sagnotti, L., Florindo, F., Cosentino, D., Cipollari, P., and Mattei, M.: Age of the Corsica-Sardinia rotation and Liguro-Provençal Basin spreading: New paleomagnetic and Ar/Ar evidence: *Tectonophysics*, 347, 231–251, doi:10.1016/S0040-1951(02)00031-8, 2002.
- Srivastava, S.P., Roest, W.R., Kovacs, L.C., Oakey, G., Lévesque, S., Verhoef, J., and Macnab, R.: Motion of Iberia since the Late Jurassic: Results from detailed aeromagnetic measurements in the Newfoundland Basin: *Tectonophysics*, 184, 229–260, doi:10.1016/0040-1951(90)90442-B, 1990.
- Stampfli, G.M.: Le Briançonnais, terrain exotique dans les Alpes? *Eclogae Geologicae Helvetiae*, 86, 1–45, 1993.
- 1290 Stampfli, G.M., and Borel, G.D.: A plate tectonic model for the Paleozoic and Mesozoic constrained by dynamic plate boundaries and restored synthetic oceanic isochrons: *Earth and Planetary Science Letters*, 196, 17–33, doi:10.1016/S0012-821X(01)00588-X, 2002.
- Stampfli, G.M., Mosar, J., Marquer, D., Marchant, R., Baudin, T., and Borel, G.: Subduction and obduction processes in the Swiss Alps: *Tectonophysics*, 296, 159–204, doi:10.1016/S0040-1951(98)00142-5, 1998.
- 1295 Stern, R.J., and Gerya, T.: Subduction initiation in nature and models: A review: *Tectonophysics*, 746, 173–198, doi:10.1016/j.tecto.2017.10.014, 2018.
- Stüwe, K., and Schuster, R.: Initiation of subduction in the Alps: Continent or ocean? *Geology*, 38, 175–178, doi:10.1130/G30528.1, 2010.
- Tetreault, J.L., and Buitter, S.J.H.: The influence of extension rate and crustal rheology on the evolution of passive margins from rifting to break-up: *Tectonophysics*, 746, 155–172, doi:10.1016/j.tecto.2017.08.029, 2018.
- 1300 Thöni, M.: Dating eclogite-facies metamorphism in the Eastern Alps - Approaches, results, interpretations: A review: *Mineralogy and Petrology*, 88, 123–148, doi:10.1007/s00710-006-0153-5, 2006.
- Thorwart, M., Dannowski, A., Grevemeyer, I., Lange, D., Kopp, H., Petersen, F., Crawford, W., Paul, A., and the AlpArray Working Group: Basin inversion: Reactivated rift structures in the Ligurian Sea revealed by OBS, *Solid Earth Discuss.* [preprint], <https://doi.org/10.5194/se-2021-9>, in review, 2021.
- 1305 Trümpy, R.: La zone de Sion-Courmayeur dans le haut Val Ferret valaisan: *Eclogae Geologicae Helvetiae*, 47, 315–359, 1954.
- Trümpy, R.: Sur les racines helvétiques et les “Schistes lustrés” entre le Rhone et la Vallée de Bagnes (Région de la Pierre Avoi): *Eclogae Geologicae Helvetiae*, 44, 338–347, 1951.
- Tucholke, B.E., and Sibuet, J.C.: Problematic plate reconstruction: *Nature Geoscience*, 5, 676–677, doi:10.1038/ngeo1596, 1310 2012.
- Tugend, J., Chamot-Rooke, N., Arsenikos, S., Blanpied, C., and Frizon de Lamotte, D.: Geology of the Ionian Basin and



- Margins: A Key to the East Mediterranean Geodynamics: *Tectonics*, 38, 2668–2702, doi:10.1029/2018TC005472, 2019.
- 1315 Tugend, J., Manatschal, G., Kuszniir, N.J., Masini, E., Mohn, G., and Thimon, I.: Formation and deformation of hyperextended rift systems: Insights from rift domain mapping in the Bay of Biscay-Pyrenees: *Tectonics*, 33, 1239–1276, doi:doi:10.1002/2014TC003529, 2014.
- Ustaszewski, K., Schmid, S.M., Fügenschuh, B., Tischler, M., Kissling, E., and Spakman, W.: A map-view restoration of the alpine-carpathian-dinaridic system for the early miocene: *Swiss Journal of Geosciences*, 101, 273–294, doi:10.1007/s00015-008-1288-7, 2008.
- 1320 Van Hinsbergen, D.J.J., Spakman, W., Vissers, R.L.M., and van der Meer, D.G.: Comment on “Assessing Discrepancies Between Previous Plate Kinematic Models of Mesozoic Iberia and Their Constraints” by Barnett-Moore Et Al.: *Tectonics*, 36, 3277–3285, doi:10.1002/2016TC004418, 2017.
- Van Hinsbergen, D.J.J., Torsvik, T.H., Schmid, S.M., Mañenco, L.C., Maffione, M., Vissers, R.L.M., Gürer, D., and Spakman, W.: Orogenic architecture of the Mediterranean region and kinematic reconstruction of its tectonic evolution since the Triassic: *Gondwana Research*, 81, 79–229, doi:10.1016/j.gr.2019.07.009, 2020.
- 1325 Van Hinsbergen, D.J.J., Vissers, R.L.M., and Spakman, W.: Origin and consequences of western Mediterranean subduction, rollback, and slab segmentation: *Tectonics*, 33, 393–419, doi:10.1002/2013TC003349, 2014.
- Vissers, R.L.M., van Hinsbergen, D.J.J., van der Meer, D.G., and Spakman, W.: Cretaceous slab break-off in the Pyrenees: Iberian plate kinematics in paleomagnetic and mantle reference frames: *Gondwana Research*, 34, 49–59, doi:10.1016/j.gr.2016.03.006, 2016a.
- 1330 Vissers, R.L.M., Van Hinsbergen, D.J.J., Meijer, P.T., and Piccardo, G.B.: Kinematics of Jurassic ultra-slow spreading in the piemonte Ligurian ocean: *Earth and Planetary Science Letters*, 380, 138–150, doi:10.1016/j.epsl.2013.08.033, 2013.
- Vissers, R.L.M., van Hinsbergen, D.J.J., Wilkinson, C.M., and Ganerød, M.: Middle jurassic shear zones at Cap de Creus (eastern Pyrenees, Spain): A record of pre-drift extension of the Piemonte–Ligurian Ocean? *Journal of the Geological Society*, 174, 289–300, doi:10.1144/jgs2016-014, 2016b.
- 1335 Vissers, R.L.M., and Meijer, P.T.: Mesozoic rotation of Iberia: Subduction in the Pyrenees? *Earth-Science Reviews*, 110, 93–110, doi:10.1016/j.earscirev.2011.11.001, 2012.
- Von Blanckenburg, F., and Davies, J.H.: Slab breakoff: A model for syncollisional magmatism and tectonic in the Alps: *Tectonics*, 14, 120–131, 1995.
- 1340 Wortel, M.J.R., and Spakman, W.: Subduction and slab detachment in the Mediterranean-Carpathian region: *Science*, 290, 1910–1917, doi:10.1126/science.290.5498.1910, 2000.
- Wortmann, U.G., Weissert, H., Funk, H., and Hauck, J.: Alpine plate kinematics revisited: The adria problem: *Tectonics*, 20, 134–147, doi:10.1029/2000TC900029, 2001.
- 1345 Yamato, P., Agard, P., Burov, E., Le Pourhiet, L., Jolivet, L., and Tiberi, C.: Burial and exhumation in a subduction wedge: Mutual constraints from thermomechanical modeling and natural P-T-t data (Schistes Lustrés, western Alps): *Journal of Geophysical Research: Solid Earth*, 112, doi:10.1029/2006JB004441, 2007.

Yamato, P., and Brun, J.P.: Metamorphic record of catastrophic pressure drops in subduction zones: *Nature Geoscience*, 10, 46–50, doi:10.1038/ngeo2852, 2017.

Zhou, X., Li, Z.H., Gerya, T. V., and Stern, R.J.: Lateral propagation-induced subduction initiation at passive continental margins controlled by preexisting lithospheric weakness: *Science Advances*, 6, 1–10, doi:10.1126/sciadv.aaz1048, 2020.

1350