

Response to interactive comment on “Vertical seismic profiling with distributed acoustic sensing images the Rotliegend geothermal reservoir in the North German Basin down to 4.2 km depth” by Anonymous Referee #1

Dear reviewer,  
thank you for your constructive comments and suggestions, which helped us to work out several important aspects of our manuscript more clearly. In the following, we have listed the individual comments, followed by our answers in italic font. After this, the revised manuscript text with the changes highlighted is appended.

Thank you and best regards,  
Jan Henninges (on behalf of all authors)

-Page 1, lines 23-25: Consider rephrasing. Do you mean that the top and base of the volcanic rocks can not be inferred from the seismic data due to insufficient reflected energy from these interfaces?

*Response: Yes, the top of the Carboniferous which we had referred to here is equivalent to the base of the volcanic rocks, and we have rephrased the sentence accordingly to make this clearer: “The top of the volcanic rocks has a somewhat different seismic response, and no stronger reflection event is obvious at the postulated base of the volcanic rocks.”*

-Page 1, line31-32: Consider rephrasing . For instance: ‘This technique allows for rapid seismic data acquisition, because DAS provides continuous point measurements along the cable and therefore does not require vertical repositioning of the cable during VSP campaigns, opposed to conventional geophone borehole strings’

*Response: We have rephrased the sentence accordingly.*

-Page 2, line72-73: Please elaborate on how the source positions were optimized using ray tracing.

*Response: We have added the sentence “Based on the ray tracing, reflection point fold maps for representative layers at target depth and incidence angles of upgoing reflected waves at the sensor cables were calculated and compared for different source point distributions.” And the following sentence, lines 73-75, was changed to: “The most suitable source point distribution was then selected, and individual source point locations were further adjusted according to the conditions within the survey area (...).”*

-Page 3: line 77-78: Is it correct that this hybrid borehole measurement system includes the interrogator? And could you add the specifications of the fiber-optic cables in table 1?

*Response: In this case the Schlumberger hDVS interrogator was connected to the hybrid borehole measurement system, as described in the text (p. 3, lines 87-88). The specifications of a hybrid wireline logging cable include many parameters, which would be too much information to be included in Table 1. Within the text on p. 3, we have referred to the publications of Henninges et al. (2011) and Hartog et al. (2014), where descriptions of the individual cables can be found.*

-Page 3, line 88: I presume that the hDVS is an optical interrogator, please mention this in the text as well.

*Response: We have added “optical interrogator” in this sentence.*

-Page 4, line 123: Please specify ground units for the different parameters from the equation.

*Response: We have added the units in parentheses after the definition of the individual*

*parameters for the equations 1 and 2 within the text.*

-Page 4, line 133-134: Consider to provide the equation for converting strain to strain rate. Also, does the mentioned 90 ° phase shift relate to the 180 ° phase shift mentioned in Table 2, or are these not related to each other?

*Response: The conversion from strain to strain rate by differentiation in time is already described at the specified position in the text (Page 4, line 133-134). So we think that providing an additional equation would be redundant. The 180° phase shift listed in Table 2 has been applied in order to match the polarity of conventional geophone data, as described on p. 8 line 254-256 (we have added a reference to Table 2 at this position for clarity), and is therefore not related to the 90° phase shift referred to here, which results from the differentiation in time.*

-Page 5, table 5: Please clarify what is meant in the row "Interval velocities → Correct times to vertical"

*Response: The correction to vertical travel times is required because of the deviation of the borehole trajectory, along which the VSP data was recorded, from vertical. It is a standard practice in zero-offset VSP processing, and is briefly described in Section 4.3 "Time depth relationships and interval velocities" on p. 7-8, lines 241-243.*

-Page 5, line 144-145: Could you comment what the possible cause for the observed zigzag noise pattern is?

*Response: A detailed description of our hypothesis for the origin of this "ringing noise" is contained in Section 4 "Results and discussion" on p. 6, lines 171-178.*

-Page 6, line 166-167: Please mention that a comparison between normalized trace amplitudes is made.

*Response: We have added "The recorded amplitudes have been normalized to the absolute maximum first break amplitude of the individual traces." in the captions of Figures 5 and 6.*

-Page 6, line 182: Consider rephrasing, since this is what one would actually expect with DAS data. As for instance Mateeva et al. (2014) state: "Since DAS measures only differential displacement, the polarity of its response is determined by whether a fiber was shortened or elongated over a gauge length, not by the direction of travel of the corresponding seismic wave. "

*Response: We first describe the data we have recorded, and then make references to three earlier studies, including the one of Mateeva et al. (2014), where a similar observation has been made. We think the observed polarity reversal for upgoing reflected waves compared to geophone data is worthwhile to be pointed out, and therefore prefer to keep the text as it is.*

-Page 6, line 189 with respect to the comparison in Figure 6. The amplitudes of two datatypes seem to be normalized based on their own maximum to [-1,1]. Please mention this. And how do the true unscaled acceleration values actually compare against one another?

*Response: Yes, the amplitudes in Figure 6 have also been normalized to the maximum of the first break arrival. We have added "The recorded amplitudes have been normalized to the maximum first break amplitude of the individual traces." in the caption of Figure 6 (also see response to earlier comment on amplitude normalization above, Figure 5).*

-Page 7, line 211-212: And what did their study conclude? Do their modeling outcomes match the observations made in this study? Overall it could be that the effect of the degree of slack is hard to control and largely depends on the well geometry. Maybe certain depth intervals favor

from extra slack where coupling is increased, while at other depth intervals the opposite holds depending on trajectory. With this determining optimal slack length could be a matter of trial and error depending partially on well geometry and depth interval/formations of interest for imaging.

*Response: The study of Schilke et al. (2016) is from the same group as the one from Constantinou et al. (2016), and it describes the numerical simulations referred to in Constantinou et al. (2016) in more detail. The results of this modeling study explain some of the observations, i.e. the constant pitch region, gradually building up from the bottom of the well when further cable slack is introduced. Nevertheless, what the modeling study does not explain, is the decrease of the signal amplitude within this zone, which is observed in our study, similar to the Rittershoffen data set described in Constantinou et al. (2016). So, as noted, it explains parts of the observations but not all, and we have included it as a further reference for the interested reader. With respect to the required slack length, Schilke et al. (2016) note: "The amount of extra cable necessary to be lowered depends on the total length and diameter of the borehole, the dimensions of the cable and its elastic properties, which determine the stiffness."*

-Page 7, line 226-228: Interesting observation. Out of curiosity; did the energy in the noise window increase, or did the energy in the signal window decrease for those intervals?

*Response: Predominantly the energy in the signal window decreased. This is described in the following text already, p. 7, lines 230-231: "The observed signal drop at 3400 m after day 1 seems to be similar to the effect of reduced signal amplitudes observed during the slack test." A common shot gather for a record showing this effect is displayed in Fig. 3, panels j, k, and l. Here we noted, that the number of this VP in the figure caption was erroneous, and we have corrected it accordingly ("17" changed to "76").*

-Page 8, line 250 regarding section 4.4: Now this section starts with a processing step and continues with the interpretation of the processed data, although the data processing and interpretation phases should typically be separated. I would therefore recommend to split this in two sections consisting of 4.4 Corridor stack and 4.5 Seismic interpretation.

*Response: This is correct, and we agree that the data processing and interpretation should usually be separated. In general, we also have followed this practice, and the processing is described in section 3.2 where Table 2 with an overview of the applied processing steps is placed. Nevertheless, as these sections are several pages apart, we think that is helpful for the understanding of the displayed results and our interpretation, if a brief textual description of the related processing steps is given at the beginning of this section here. As this description is rather short (one paragraph with four sentences), we feel that introducing a separate section for this is not justified.*

-Page 10, line 352: Can you comment approximately how much faster DAS-VSP is compared to conventional VSP?

*Response: This is strongly dependent on a number of factors, but in order to give a rough estimate, we have included the following sentence at this position at the end of the text: "Such savings depend on the specific targets and conditions of an individual survey, as well as on the available technologies and performance of the equipment used. But for a VSP survey similar to this study, we would roughly estimate the operational effort to be reduced around a factor of 5 to 10."*

-Page 14, figure 1. Highlight the source positions in the left panel that are further shown in figures 3 and 4 (positions 10, 25, 66 and 17). Please increase the size of the legend in the right panel.

*Response: We have increased the font size of the legend in Figure 1 and marked the respective*

*source point positions with crosses and printed the numbers with bold type. We have added a corresponding explanation in the Figure caption.*

-Page 17, caption of figure 5: Please state that these are normalized amplitudes.

*Response: We have added "The recorded amplitudes have been normalized to the maximum first break amplitude of the individual traces." in the captions of Figures 5 and 6.*

-(Page) 18, caption of figure 6. Please state that these are normalized amplitudes. And consider to show and compare non-normalized amplitudes.

*Response: We have added "The recorded amplitudes have been normalized to the maximum first break amplitude of the individual traces." in the captions of Figures 5 and 6. In our opinion it is not very meaningful to directly compare true amplitudes recorded with different sensors having different sensitivity, characteristics, coupling etc. Trace normalization to the same reference is an appropriate way for a comparison with respect to relative amplitude and S/N ratio.*

Technical corrections:

-Page 8, line 244: Please rephrase the sentence part "For a close to the receiver wells situated zero-offset position, VSP..."

*Response: We have changed this part of the sentence to "For the VP 10 zero-offset position, VSP..."*

-Page 10, line 398: Regarding the reference to Daley et al. please check the year, because this work seems to date from 2015 instead of 2016.

*Response: We have checked the publication date: the work is from 2016.*

Response to interactive comment on “Vertical seismic profiling with distributed acoustic sensing images the Rotliegend geothermal reservoir in the North German Basin down to 4.2 km depth” by Ariel Lellouch (Referee).

Dear Ariel,  
thank you for your constructive comments and suggestions, which helped us to work out several important aspects of our manuscript more clearly. In the following, we have listed the individual comments, followed by our answers in italic font. After this, the revised manuscript text with the changes highlighted is appended.

Thank you and best regards,  
Jan Henninges (on behalf of all authors)

First of all, I think the focus of the paper could be better. What is fundamentally new in your study is not the VSP processing, which is relatively standard, but the deep deployment of a vertical wireline DAS cable that yields excellent data. This example can have significant implications as old wells in which the fiber was not cemented/tubed will become available for different purposes. The fact that the deployment is in a hot area makes DAS even more attractive. Therefore, I'd suggest a change to the title and to possibly further emphasize this aspect in the text.

*Response: We agree and have modified the title to “Wireline distributed acoustic sensing allows 4.2 km-deep vertical seismic profiling of the Rotliegend 150°C-geothermal reservoir in the North German Basin”, as well as several parts of the abstract accordingly, in order to work out these points more clearly.*

Another novel point, which is especially relevant to the DAS community, is the publication of a dataset acquired with the Schlumberger interrogator. One of the main benefits of the hDVS, if I correctly understood the company's claims, is that multiple gauge lengths are acquired during the acquisition step and can later be adjusted during data processing. I suppose there are limitations in what you can show, but it would be nice to see records of different GLs.

*Response: It is true that with Schlumberger's hDVS technology, the gauge length can be varied, both during a survey and after recording during data processing. We used this feature and recorded data sets with different gauge lengths during the start-up test. Based on this, we had chosen a gauge length of 20 m for recording in the field, as described in section 2. Then, after derivation of the travel times and interval velocities from the recorded data, we performed the gauge length optimization procedure of Dean et al. (2017) using the average velocity of the target interval, as described in section 3.1. This resulted in an optimum gauge length of 40 m, for which the whole data set was then reprocessed. We will include data recorded or processed with different gauge length in the data publication/supplement to this paper, which is currently under preparation: Henninges J., Martuganova E., Stiller M., Norden B., and Krawczyk C.M.: DAS-VSP data from the Feb. 2017 survey at the Groß Schönebeck site, Germany, GFZ Data Services, doi:10.5880/GFZ.4.8.2021.001, in review. We have added the reference to the data publication under section “Data availability” and the reference list.*

In addition, you have pronounced changes in velocity, especially at <1500m. In the spirit of your GL optimization, would it be better to use a shorter GL (maybe the 20 m) for the shallower section if the processing workflow allows for it?

*Response: Yes, for processing of the shallower intervals this would be beneficial, as described e.g. in Dean et al. (2017). But as the focus of our current study is predominantly on the deeper Rotliegend reservoir section, such a zoned processing approach was not applied here. We have therefore added the following sentence at the end of section 3.1: “It would also be possible to apply a depth-dependent gauge length optimization, as suggested by Dean et al. (2017), by taking local variations of velocity and frequency content into account. This was nevertheless not performed in the current study, because the focus here is predominantly on the deeper*

*Rotliegend reservoir section only.*

Besides, the useful Dean et al. (2016) derivation is correct for vertically propagating wavefronts to follow up on that point. In your case, especially for the far offsets, it seems like the apparent slowness is significantly faster, thus commanding longer GL. Would it make sense to have a GL that is offset-dependent as well? I think it is important to discuss the variable GL, because using an average velocity to optimize GL is what one expects for more “standard” interrogators.

*Response: True, but again, as the focus of our current study is on the deeper Rotliegend reservoir section only, where larger variations of velocity do not occur, as well as on the zero-offset data sets, we feel that it would be somewhat outside the scope of this paper to enter into a deeper discussion on variable gauge lengths. But as noted above, we have included a note on the importance and our approach used here within the text.*

There is also a big gap between the acquisition/deployment efforts and the analysis reported here. In the Introduction and Survey design, you set the stage towards 3-D velocity model building/imaging. However, the eventual processing is much more modest – a 1-D velocity analysis with corridor stacks (if I understood correctly). This comment is not a criticism of the work, but I think it would be much better to set reasonable expectations early on in the paper.

*Response: To make this clearer we have added the following sentences at the end of section 1 Introduction: “In the following, the survey design and data acquisition, the overall characteristics of the acquired data, as well as the data processing and evaluation for a zero-offset source position are presented. Specific processing and interpretation of a 3D-VSP seismic cube will be the subject of a separate publication.”*

Also, I found the velocity model building/processing sections very opaque. Did you use all shots, or just the zero-offset ones, for velocity model building? What is the meaning of a corridor stack for non-zero offsets (the reflection point would be away from the well)?

*Response: The building of the velocity model was intentionally only described briefly here, as it was only used for correction of the vertical travel times, as described at the beginning of section 4.3. The velocity model building was part of the 3D-VSP imaging, which will be described in a separate publication, as noted above. The corridor stacks were of course only prepared for the VP10 zero-offset source position. In order to make this clearer we have added “applied to the data from the VP 10 zero-offset position” to the first sentence at the beginning of section 4.4.*

Assuming the 3-D analysis isn’t ready, can you show gathers (common-receiver in VSP + direct downgoing travel time correction) to illustrate the azimuthal velocity variations and motivate future 3-D work?

*Response: In contrast to a common-source gather (one source point recorded by a linear receiver line) it is hardly possible to display a common-receiver gather containing spatially distributed source positions with different offsets and azimuths recorded at one receiver point. We don’t believe that an azimuthal velocity analysis can be performed by this.*

On a related note, the estimated 1-D velocity model has a much lower resolution than the sonic logs, and I think it merits a discussion. The most obvious example is that the high-velocity zone in the top salt (interesting!) around 2500 m, almost 80 m high, only weakly shows in the estimated velocity model. I can understand why it happens to a certain extent. However, looking at the narrower sweep’s signatures, it seems to me that you probably have ~100 Hz with reasonable SNR down to the bottom of the well for most of the survey. So, you have a more than a wavelength that can fit inside the high-velocity zone that I mentioned. I suspect that the low-resolution in the velocity comes from mixing shots in different azimuths and averaging a 3-D structure into the best possible 1-D approximation, but it is only a guess.

*Response: Of course the sonic log has a much higher spatial resolution due to the higher source frequency the tools are using, which usually reaches up to several kHz. But your assumption that the high velocity layer at around 2.500 m depth (a 50 m thick anhydrite layer, with the X2 and X3 reflectors at its top and base, respectively) should be resolvable in the VSP data is nevertheless correct. This layer, as well as the other two high-velocity anhydrite layers at the base of the Zechstein interval, intentionally appear strongly smoothed in the VSP interval velocity profiles, because these were calculated using the method of smooth inversion after Lizarralde & Swift (1999), as described in section 4.3 / line 245 within the text. For further explanation of this method, we have added the following text: "Here a damped least-squares inversion of VSP travel times is applied, which reduces the influence of arrival-time picking errors for closely spaced sampling points, and seeks to result in a smooth velocity/depth profile. In our study, a 1.1 ms residual of the travel times has been allowed for." In the last sentence of this section on the comparison with the sonic log data, we further added: "Taking into account the desired smoothing of the profiles resulting from the applied computation method, (...)"*

Minor technical comments:

Sorry for referring to my work, but there have been a few recent deployments of downhole DAS in EGS projects. You can see the studies by Junzo Kasahara (mostly abstracts) and myself (Lellouch et al., 2020, SRL, and another one currently on arXiv). These studies have recognized the benefits of DAS in geothermal reservoirs, and I think they can strengthen your introduction and, eventually, conclusions.

*Response: Such studies on using DAS for microseismic monitoring are indeed strongly relevant for our study. We have included the following sentence including this and some further references in the introduction: "There is also a growing number of studies applying DAS for microseismic monitoring during hydraulic stimulation (e.g. Molteni et al. 2017, Karrenbach et al. 2017), also including EGS reservoirs (Lellouch et al. 2020)." The following three references were added:*

*Karrenbach, M., Kahn, D., Cole, S., Ridge, A., Boone, K., Rich, J., Silver, K., and Langton, D.: Hydraulic-fracturing-induced strain and microseismic using in situ distributed fiber-optic sensing, Leading Edge, 36, 837-844, 10.1190/tle36100837.1, 2017.*

*Lellouch, A., Lindsey, N. J., Ellsworth, W. L., and Biondi, B. L.: Comparison between Distributed Acoustic Sensing and Geophones: Downhole Microseismic Monitoring of the FORGE Geothermal Experiment, Seismol. Res. Lett., 91, 3256-3268, 10.1785/0220200149, 2020.*

*Molteni, D., Williams, M. J., and Wilson, C.: Detecting microseismicity using distributed vibration, First Break, 35, 51-55, 2017.*

It would also be interesting to mention if you picked up any earthquakes during the recording – downhole DAS is much more sensitive than surface arrays.

*Response: We did not notice any signs of earthquakes during the processing of the data. The natural seismic activity in the study area is very low.*

I think Figures 5 and 6 can be combined into one.

*Response: We deliberately plotted this data in two separate graphs, in order to have a clear visualization of the individual traces. We think that the plots would become overloaded when combining the two figures into one, therefore we prefer to keep them separate.*

DAS/geophone comparison - the fact that downhole geophones are actually accelerometers is highly confusing (not your fault. . .). It would be better to clearly state this fact and that the DAS comparison is to the vertical axis of the geophone. By the way, if you follow Egorov 2018 for unit conversions, you can scale each point in the F-K domain by  $\omega^2/k$  and do it all in one pass.

*Response: The fact that the borehole geophone is an accelerometer is stated within the text in lines 86 and 166, where it is also stated, that the vertical component is displayed, as well in the caption of Fig. 6. We have now also added this information in the caption of Figure 5: "The*

*borehole geophone is a three-component accelerometer, and the vertical component parallel to the tool/borehole axis is displayed.” With respect to the data conversion according to Egorov et al. (2018), yes, you are right, thank you for this notice. We decided to split the conversion process into these two sub-steps for easier comprehension. Technically it is the same procedure.*

Can you show the synthetic (predicted) trace for the logged section? It would be easier to compare with the corridor stacks and see which events are spurious.

*Response: We had calculated different synthetics with variation of the input wavelets, spatial sampling, etc., in the course of our analysis. But as the logging data exists only for certain intervals and the results were not fully conclusive, we have not included these here.*

For non-expert readers, it would be useful to mention why aren't the sonic logs sufficient for your final interpretation. This is not uniquely related to DAS, but to standard VSP as well.

*Response: In the revised abstract and introduction we explain that the DAS-VSP survey was performed in order to gain more detailed information on the structural setting and geometry of the reservoir, and that we derived time-depth relationships, interval velocities, and corridor stacks from the data. Clearly, most of this information is not provided by a sonic log. So this should be clear now, even to non-expert readers.*



# Wireline distributed acoustic sensing allows 4.2 km-deep vertical seismic profiling of the Rotliegend 150°C-geothermal reservoir in the North German Basin

## ~~Vertical seismic profiling with distributed acoustic sensing images the Rotliegend geothermal reservoir in the North German Basin down to 4.2 km depth~~

Jan Henninges<sup>1</sup>, Evgeniia Martuganova<sup>1</sup>, Manfred Stiller<sup>1</sup>, Ben Norden<sup>1</sup>, Charlotte M. Krawczyk<sup>1,2</sup>

<sup>1</sup> Helmholtz Centre Potsdam, GFZ German Research Centre for Geosciences, Potsdam, 14473, Germany

<sup>2</sup> Technische Universität Berlin, Berlin, 10587, Germany

Correspondence to: Jan Henninges (janhen@gfz-potsdam.de)

**Abstract.** We performed so far unprecedented deep and wireline vertical seismic profiling at the Groß Schönebeck site with the novel method of distributed acoustic sensing (DAS) ~~in order~~ to gain more detailed information on the structural setting and geometry of the geothermal reservoir, which is comprised of volcanic rocks and sediments of Lower Permian age. During the ~~four-day~~ survey of four days only, we acquired data for 61 source positions ~~with the novel method of distributed acoustic sensing (DAS)~~, using hybrid wireline fiber-optic sensor cables deployed in two 4.3 km deep already existing wells. ~~We show that wireline cable tension has a significant effect on data quality.~~ While most of the recorded data has a very good signal-to-noise ratio, individual sections of the profiles are affected by characteristic coherent noise patterns. This ringing noise results from ~~is a result of how the~~ incomplete coupling of the sensor cable ~~is mechanically coupled~~ to the borehole wall, and it can be suppressed to a large extent using suitable filtering methods. After conversion to strain rate, the DAS data exhibits a high similarity to the vertical component data of a conventional borehole geophone. ~~Upgoing reflections are nevertheless recorded with opposite polarity, which needs to be taken into account during further seismic processing and interpretation.~~ We derived accurate time-depth relationships, interval velocities, and corridor stacks from the recorded data. Based on integration with other well data and geological information, we show that the top of a porous and permeable sandstone interval of the geothermal reservoir can be identified by a positive reflection event. Overall, the sequence of reflection events shows a different character for both wells, ~~which is~~ explained by lateral changes in lithology. The top of the volcanic rocks has a somewhat different seismic response in both wells, and no ~~stronger-clear~~ reflection event is obvious at the postulated ~~top-base~~ of the ~~Carboniferous volcanic rocks, so that their~~ Carboniferous volcanic rocks, so that their. The thickness ~~of the volcanic rocks~~ can ~~therefore~~ not be inferred from individual reflection events in the seismic data alone. The DAS method ~~has~~ enabled measurements at elevated temperatures up to 150 °C over extended periods and ~~has~~ led to significant time and cost savings compared to deployment of a conventional geophone chain. This wireline approach finally suggests significant implications for observation options in old wells for a variety of purposes, such as stability and pathway monitoring.

## 1 Introduction

Borehole seismic array measurements benefit from deploying fiber-optic cables and using the novel distributed acoustic sensing (DAS) method. This technique allows for rapid seismic data acquisition, because DAS provides continuous point measurements along the cable and therefore does not require vertical repositioning of the cable during VSP campaigns, opposed to conventional geophone borehole strings~~no discrete sensors respectively shifting to multiple levels are necessary~~ (see proofs of concept in e.g. Mestayer et al. 2011; Miller et al. 2012).

While issues like the mechanical coupling of the sensor cable and the transfer from strain to geophone-equivalent data are still under discussion (see Hartog et al. 2014; Daley et al. 2016), we used this survey technique and further improved the processing of this new data type for geothermal applications to overcome the classical resolution problem and derive accurate time-depth relationships.

The Groß Schönebeck site is located 40 km N of Berlin in the state of Brandenburg, Germany. It is a research platform operated by the GFZ German Research Centre for Geosciences, which has been set up in order to test if production of geothermal energy from deep-seated reservoirs in the North German Basin is feasible. An enhanced geothermal system (EGS) has been created by hydraulic stimulation of low-permeability sedimentary and volcanic rocks of lower Permian (Rotliegend) age (Huenges et al. 2006; Zimmermann et al. 2010). So far, two deep research boreholes, the former E GrSk 3/90 hydrocarbon exploration well and the Gt GrSk 4/05 geothermal well (referred to as GrSk3 and GrSk4 in the following), exist at the site. For further development of the site, the implementation of a new stimulation concept and drilling of a new well have been proposed (Blöcher et al. 2015).

In order to gain more detailed information on the structural setting and geometry of the reservoir, a 3D seismic survey within an 8 km x 8 km permit area has been carried out in February and March 2017 (Krawczyk et al. 2019). In addition, vertical seismic profiling (VSP) has been performed within two research wells existing at the site. The primary aims of the VSP survey were to establish precise time-depth and velocity profiles, and to image structural elements in the vicinity of the boreholes with higher resolution in three dimensions. A special challenge is the imaging of structures within the reservoir interval of the Rotliegend at 4200 m depth, which is overlain by the 1400 m thick Upper Permian Zechstein salt complex.

The VSP measurement was performed using the novel DAS method. This method is based on optical time-domain reflectometry, and enables to register strain changes along optical sensor cables with high spatial and temporal resolution (Parker et al. 2014). Within recent years, a growing number of VSP surveys has been reported, where the DAS method has successfully been applied using sensor cables permanently installed behind casing or along tubing (e.g. Mestayer et al. 2011; Daley et al. 2013; Götz et al. 2018). This deployment method is very convenient as it allows for data acquisition without well intervention. There is also a growing number of studies reporting on successful application of DAS for microseismic monitoring during hydraulic stimulation (e.g. Molteni et al. 2017, Karrenbach et al. 2017), also including EGS reservoirs (Lellouch et al. 2020). In cases where such a permanent installation is not possible or has not been performed during construction of the well, a sensor cable can be lowered downhole temporarily, similar to conventional wireline logging. For this wireline deployment method nevertheless only very few experiences exist until now: First tests using an experimental optical wireline logging cable deployed in a 625 m well were described by Hartog et al. (2014), while a more extensive DAS walkaway VSP survey has been performed by Yu et al. (2016) in a vertical well to a depth of 4004 m. Within the current study, we report on the results of a DAS-VSP acquisition on wireline cable to a depth of 4256 m, which to the authors knowledge represents the deepest survey currently documented in literature worldwide. In the following, the survey design and data acquisition, the overall characteristics of the acquired data, as well as the data processing and evaluation

for a zero-offset source position are described. The processing and interpretation of a 3D-VSP seismic cube will be the subject of a separate publication.

## 2 Survey design and data acquisition

The target area was defined by the positions of the existing wells, the expected extent of the hydraulic fractures, and the trajectory of the proposed new well. It has a horizontal extent of approx. 700 m x 500 m and a vertical thickness of approx. 300 m. A spiral pattern of 61 source points with offsets between 180 m and 2000 m from the wellheads was chosen, in order to achieve a good 3D coverage of the target area with a uniform distribution of azimuths (Figure 1). Survey planning was based on well trajectories and geometry of the major geologic units (Moeck et al. 2009), taking into account DAS specific acquisition characteristics like directivity and signal-to-noise ratio. The source point positions were optimized based on ray tracing, using average acoustic properties of the major geologic units from a previous regional seismic survey (Bauer et al. 2010). Based on the ray tracing, reflection point fold maps for representative layers at target depth and incidence angles of upgoing reflected waves at the sensor cables were calculated and compared for different source point distributions. The most suitable source point distribution was then selected, and actual-individual source point locations were ~~then-further~~ adjusted according to the conditions within the survey area, i.e. location of roads and agricultural areas, as well as required distances to sensible infrastructures like gas lines or buildings.

A listing of the acquisition parameters is contained in Table 1. Energy excitation was performed with four heavy vibrator trucks operating simultaneously at each source position. For acquisition of the DAS data in well E GrSk 3/90 the GFZ hybrid borehole measurement system was used, which allows for deployment of fiber-optic sensors and electric downhole tools in parallel (Henninges et al. 2011). The GrSk3 well is near-vertical (maximum inclination 7.2°), and the fiber-optic data was acquired to a measured depth (MD) of 4256 m below ground level, which corresponds to a true vertical depth (TVD) of 4245.8 m below ground level (note that all depths in this study are given in MD, if not stated otherwise). Within the well Gt GrSk 4/05, which is deviated up to 49° in the reservoir interval, a second wireline cable containing optical fibers was deployed (maximum DAS acquisition depth 4196 mMD / 4126.1 mTVD). This is an experimental optical wireline cable developed by Schlumberger, referred to as optical heptacable (Hartog et al. 2014). This cable was also used to deploy a conventional three-component borehole geophone with acceleration characteristics (VSI Versatile Seismic Imager tool, Schlumberger), in order to record several check shots<sup>1</sup> at specific depths within the GrSk4 well. DAS data was acquired on both cables using two separate Schlumberger hDVS (Heterodyne Distributed Vibration Sensing) optical interrogator units.

---

<sup>1</sup> Here and in the following, the term „shot“ is used to refer to a single vibroseis record.

**Table 1: DAS-VSP acquisition parameters.**

Parameter	Value
Seismic Source	4 vibrator trucks; Mertz M12 Hemi 48, peak force 200 kN (45100 lbf) each
Number of source points	61
Offset	188 m - 2036 m
Sweep (near offsets)	10-112 Hz, linear up, 36 s, 360 ms taper
Sweep (far offsets)	10-96 Hz, linear up, 36 s, 360 ms taper
Vertical stacking rate	16 repetitions (nominal)
Signal recording	2 Schlumberger hDVS units, 2 hybrid wireline cables
Depth interval receiver channels E GrSk 3/90	Ground level – 4256 mMD / 4245.8 mTVD
Depth interval receiver channels Gt GrSk 4/05	Ground level – 4196 mMD / 4126.1 mTVD
Receiver channel distance (spatial sampling along borehole)	5 m
Gauge length	20 m
Sampling interval	2 ms
Trace length (after correlation)	4 s
Polarity convention	European / EAGE normal

Fieldwork was carried out within four days from Feb. 15-18, 2017. At the beginning, we performed a start-up test (referred to as day 0 in the following), where suitable source and recording parameters were determined. As a result, we selected a sweep with 10-112 Hz (linear) and 36 s duration for acquisition. For some of the larger offsets, a sweep with reduced frequency range of 10-96 Hz was used. A gauge length of 20 m was selected for online DAS data processing during recording. This value was later adjusted to 40 m during post-processing as a result of an optimization procedure (see Section 3.1). The DAS measurements were recorded with a temporal sampling of 2 ms and a spatial sampling of 5 m spacing across the entire length of the wells.

During the start-up test, we recorded several shots with variation of the wireline cable tension in the GrSk3 well, in order to test the influence on the mechanical coupling of the cable and the quality of the recorded signals (cf. Frignet and Hartog, 2014; Constantinou et al., 2016). After the bottom of the drivable depth in well GrSk3 had been reached at 4259 mMD, recordings with increasing amounts of cable slack of 1 m, 5 m, 11 m, and 20 m have been performed. Based on the results, it was decided to keep the wireline cable under almost full tension for recording, as the best overall data quality was found to be achieved under these conditions (see section 4.2).

Within the following three days (days 1-3), acquisition was performed with a nominal number of 16 repeats for the 61 source positions distributed around the wells (see Figure 1). Nevertheless, due to a technical problem with acquisition in well GrSk4 during day 1, mainly data for well GrSk3 could only be recorded during this time. Therefore, in order to improve the reduced coverage around the GrSk4 well caused hereby, we relocated some of the original source positions from the northern to the southwestern part of the survey area.

### 3 Seismic data processing

As one of the first processing steps, the DAS data recorded along the length of the sensor cables was correlated to the measured depth along the boreholes. This depth correlation was performed using the gamma-ray logs recorded during running in hole with the sensor cables, as well as travel time data from check shots recorded at 1200 m, 2400 m, 3600 m, and 4207 m depth in the GrSk4 well. During further processing, the depths were transferred to vertical depths below the seismic reference datum, which is mean sea level (TVDSS, True Vertical Depth Sub Sea), using the geometries of the borehole trajectories.

### 3.1 Gauge length optimization

The choice of an optimized gauge length value is an essential part of the DAS data acquisition and processing. This parameter has a significant effect on the signal-to-noise ratio of the data and on resolution in the frequency domain. Dean et al. (2017) presented an approach, which helps to maximize the signal-to-noise ratio, while keeping interfering influences on the frequency content below a desired threshold value. By selecting an optimum gauge length  $GL_{opt}$  (m), a favorable compromise between these two factors can be achieved, using

$$GL_{opt} = \frac{Rv}{f_p} \quad (1)$$

with  $R$  the gauge length / spatial wavelength ratio (-),  $v$  acoustic velocity (m/s), and  $f_p$  peak frequency (Hz).

The graphs presented in Figure 2 show the dependence of signal-to-noise ratio and resulting wavelength on  $R$  for the conditions of the current survey. According to this, optimum conditions within the desired limits are found for  $R$ -values between 0.46 and 0.56. For an intermediate  $R$  value of 0.5, an optimum gauge length of 39 m is calculated using (1), for a velocity of 4800 m/s, which has been extracted from the interval velocities derived for the Rotliegend reservoir interval (see section 4.3), and a middle frequency of 61 Hz for the 10-112 Hz sweep. Therefore, the acquired DAS-VSP data was reprocessed accordingly, using the derived optimum gauge length value. It would also be possible to apply a depth-dependent gauge length optimization, as suggested by Dean et al. (2017), by taking local variations of velocity and frequency content into account. This was nevertheless not performed in the current study, because the focus here is predominantly on the deeper Rotliegend reservoir section only.

### 3.2 Pre-processing

An overview of the further seismic data processing steps is contained in Table 2. Seismic pre-processing included stacking and correlation with the pilot sweep. The hDVS output strain data was then transformed to strain rate by differentiation in time, resulting in a 90° phase shift. The strain-rate data is proportional to acceleration (Daley et al. 2016), and acceleration is in phase with the pilot sweep (Sallas 1984).

**Table 2: Sequence of processing steps for zero-offset DAS-VSP data sets.**

Processing step	Methods, parameters, and description
<b>Pre-processing</b>	Diversity stack of shots (suppression of impulsive noise) Correlation with pilot sweep Conversion to strain rate (time derivative)
First arrival time picking	Peak of direct downgoing wave
<b>Interval velocities</b>	Correct times to vertical Velocity inversion of travel time data
Data preconditioning	Amplitude corrections (spherical divergence compensation and lateral balancing) Coherent (ringing) noise suppression (Burg adaptive deconvolution)
Wavefield separation	Subtraction of downgoing P-wave field (median filter)
Waveshaping / zero-phasing of upgoing wavefield, removal of multiples	Deterministic deconvolution, using operator derived from downgoing wavefield
Polarity reversal	180 ° phase shift, to match polarity convention of conventional geophone data
<b>Corridor stack</b>	Shift to two-way time (horizontal alignment of upgoing reflections), stacking of 0.2 s window after first arrival

### 3.3 Common-source gathers and coherent noise suppression

Common-source gathers for zero offset, intermediate, and far offset source positions are displayed in Figure 3 and Figure 4. The common-source gathers are dominated by downgoing P-wave arrivals, and arrivals of upgoing waves originating from several reflectors at different depths. For several shots, a strong tube wave arriving at later times is clearly visible as well.

Over several intervals along the wells, a coherent noise with a particular zigzag pattern can be recognized in the DAS data. Similar noise in DAS data recorded using cables suspended in boreholes has also been described in some earlier studies, e.g. by Miller et al. (2012), Yu et al. (2016), Cai et al. (2016), and Willis et al. (2019). It has also been found to occur for tubing-deployed cables, e.g. in the studies of Barberan et al. (2012), and Didraga (2015).

Several methods for elimination of this “ringing” noise like spectral balancing, deconvolution, and time-frequency domain filtering (Elboth et al., 2008) were tested. For zero offset data processing we selected to use Burg adaptive deconvolution (Griffiths et al., 1977). This method is a good compromise between computational effort, robustness, and application simplicity. A more thorough description of this ringing noise and further methods of noise suppression can be found in Martuganova et al. ([under-in review](#)). The filtered data sets are displayed in Figure 3 and Figure 4, together with the unfiltered data sets for comparison.

Usage of self-updating linear prediction operators is the foundation of the Burg adaptive deconvolution method. The designed filter operator is different at each trace sample. A set of filter coefficients is convolved with the data in order to predict the future data values at some prediction distance. Coefficient values are re-computed for each data sample in the seismic record with the criterion of minimising the root-mean-square error. The computations are performed in forward and reverse direction in the time domain.

The application of Burg adaptive deconvolution resulted in a significant reduction of the coherent ringing noise (Figure 3 and Figure 4). After filtering, reflections are better visible and sharpened. Nevertheless, not all parts of the noise can be suppressed, especially in a short time window after the first break arrivals. This residual noise is difficult to be distinguished from upgoing reflected waves, as the velocity of the noise travelling along the cable is similar to the compressional velocity of the formation (Martuganova et al., [submitted in review](#)).

## 4 Results and discussion

### 4.1 Comparison of DAS and borehole geophone data

A comparison between the DAS strain rate data and the vertical component of the borehole geophone acceleration data recorded at specific depths in the GrSk4 well is displayed in Figure 5. Note that during recording of the check-shot data a sweep with 10-88 Hz was used, which is different from the recording of most of the other data during the survey.

The traces recorded at 1200 and 3600 m depth both contain direct P-wave arrivals, at 520 ms and 1090 ms, respectively. The DAS trace for 1200 m depth is strongly influenced by the ringing noise described above, which is confined to a narrow frequency band between 40 and 50 Hz (Figure 5B) at this location. Similar noise characteristics have been observed, e.g. in the study of Chen et al. (2019). This noise is however not evident in the geophone data recorded at the same depth, which suggests that the ringing noise in the DAS data is related to the different deployment methods of the acoustic receivers. While the DAS sensor cable is freely suspended inside the borehole, the geophone tool is clamped to the borehole wall. Closer analysis of the ringing noise shows that the

sensor cable acts like a vibrating string within the affected intervals, with resonances occurring at a fundamental frequency and higher overtones (Didraga et al., 2015; Martuganova et al., [submitted in review](#)).

The traces recorded at 3600 m depth (Figure 5E) also contain strong reflected waves, which arrive at around 1190 ms and originate from the base of Zechstein reflectors, at around 3850 m depth (see Figure 4). Overall, the DAS strain rate data exhibits a high similarity with the geophone measurements, except for the upgoing reflections. Here, the DAS strain rate data displays the opposite polarity as the geophone data. This polarity reversal for reflected upgoing waves has also been observed in previous studies, e.g. by Hartog et al. (2014), Mateeva et al. (2014), or Willis et al. (2016). Frignet and Hartog (2014) note that such a polarity flip compared to geophone data is similar to the characteristics of hydrophone sensors.

As a test, we have also converted the DAS data to geophone-equivalent acceleration data, using the method described by Egorov et al. 2018. For this, we performed a transformation of the original DAS strain data into acceleration via filter application in the vertical wavenumber domain ( $k_z$ ) and further double differentiation in the time domain. The results for the check-shot traces recorded at 2400 m and 3600 m depth are shown in Figure 6. After conversion to acceleration, the DAS data displays the same polarity as the geophone data, also for the upgoing reflections. This is in line with previous results obtained by Correa et al. (2017).

## 4.2 Signal quality

Common-source gathers recorded with different amounts of cable slack in well GrSk3 are displayed in Figure 7. There is a zone with decreased amplitude of the first break signal at the bottom of the well, which increases in length with increasing amount of cable slack. While the random noise is similar, leading to an overall signal-to-noise ratio (SNR) drop within the affected zone, the coherent noise is changing. For the recordings with 1 m, 5 m and 11 m cable slack, a zone with ringing noise is visible at a depth of approx. 2890 mMD. This zone almost disappears in the 20 m cable slack data set, where the zone of decreased first break amplitudes is approximately approaching the same depth. So ringing noise seems to be reduced within the affected zone, likely because of improved mechanical coupling of the cable to the borehole wall. But at the same time, the signal amplitude is significantly reduced within the affected zone as well.

Due to the higher first break amplitudes, the best signal quality overall was assigned to the data set recorded with 1 m cable slack, i.e. under almost full cable tension, and further recording was performed like this. Notably the best seismic record had been found to be recorded under the opposite conditions with released cable tension during the field trial reported by Frignet and Hartog (2014). Nevertheless, in their study, the optical wireline cable had been deployed in a relatively shallow well of 625 m depth, and the borehole conditions might not be representative for deep wells as in the current study for the Groß Schönebeck case. Constantinou et al. (2016) observed a behavior similar to the current study during a field trial in a well of 2580 m depth at the Rittershoffen site in France. Here, the zone of reduced signal amplitudes was found to coincide with a region where the cable was interpreted to form a spiral, gradually building up from the bottom of the well when additional cable slack had been introduced. Schilke et al. (2016) investigated the effect of cable slack on the mechanical coupling of a sensor cable deployed in a vertical well using numerical simulations.

For data quality evaluation, the SNR for each trace of the dataset was calculated. The energy of signal and noise was computed as the root mean square (RMS) amplitude ([in arbitrary units](#)) within time windows of -10 to +30 ms around the first arrival and 150 ms at the beginning of the trace before the first arrival, respectively. The signal-to-noise ratio was then calculated in dB using the formula:



$$SNR = 20 \log_{10} \frac{RMS_{signal}}{RMS_{noise}} \quad (2)$$

The calculated SNRs are displayed in Figure 8 and Figure 9. The data is sorted for the different acquisition days and with increasing source offset. Each vertical column represents a source location, and the calculated SNR for each trace is color-coded. Altogether, the data has a good SNR, with average values of approx. 40 dB to 50 dB at a depth region around 1000 m for the smaller offset source locations, decreasing to approx. 4 dB to 10 dB at around 4200 m close to the final depth. There is an overall decrease of the SNR with increasing channel depth and source offset, which corresponds to the decay of signal amplitudes to be expected due to spherical divergence of the acoustic waves. The data for the first acquisition day have similar characteristics for both wells, with slightly larger SNRs for well GrSk4.

From the start of the second acquisition day, a sharp drop of the SNR is evident in the data recorded in GrSk3 at a depth of approx. 3400 m. In addition, there are further intervals with decreased SNR at depths of approx. 3100 m and 2600-2800 m. Curiously, the SNR for the channels below 3400 m gradually recovers again with increasing depth, until even improved SNRs in comparison to the first acquisition day are reached in the bottom interval.

The observed signal drop at 3400 m after day 1 seems to be similar to the effect of reduced signal amplitudes observed during the slack test. Nevertheless, the configuration of the wireline cable remained unchanged between day 1 and day 2. Accidental introduction of additional cable slack during this time, e.g. by slipping of the wireline winch, or movement of the crane arm holding the cable sheave, can be excluded, as the position of the cables was carefully monitored by placing marks on them after running into the hole. Furthermore, no significant change of the wireline cable tension at surface has been registered between day 1 and day 2. Other causes must therefore be responsible for the observed effect.

Combined with the remaining coherent noise after filtering, there is a significant heterogeneity in the data, which requires to carefully select the data to be considered during evaluation and interpretation.

### 4.3 Time-depth relationships and interval velocities

For every source point, the travel times of the direct downgoing waves were determined by picking of the first break times (Table 2). A velocity model has been set up based on the geometry of the existing geological model from Moeck et al. (2009), and by calibrating the model velocities with the picked travel times. Vertical travel times have then been determined by ray tracing through the calibrated model.

For ~~a close to the receiver wells situated~~ the VP 10 zero-offset position, VSP interval velocities along the wells have been calculated from the travel times using the method of smooth inversion after Lizarralde and Swift (1999). Here a damped least-squares inversion of VSP travel times is applied, which reduces the influence of arrival-time picking errors for closely spaced sampling points, and seeks to result in a smooth velocity/depth profile. In our study, a 1.1 ms residual of the travel times has been allowed for. The calculated VSP interval velocities vary between about 2.8 and 5 km/s (Figure 10). Variations within the VSP interval velocity profile show a good correlation to stratigraphy and the dominant lithologies. Taking into account the desired smooting of the profiles resulting from the applied computation method, The VSP interval velocities agree well with the compressional velocities from the sonic log only recorded in the lower part of the GrSk3 well.

### 4.4 Corridor stacks

Further processing steps applied to the data from the VP 10 zero-offset position included separation of up- and downgoing wavefields, deconvolution, and transformation to two-way travel time (Table 2). After this, reflections



are aligned horizontally and vertical reflection profiles were generated by stacking of the separated upgoing wavefield data over a defined time window after the first arrival (corridor stack). Because of the recording characteristics of the DAS data (see section 4.1), the polarity of the upgoing wavefield data has been reversed ([see Table 2](#)), in order to match the polarity convention of conventional geophone data. The polarity convention of the data is European or EAGE normal, i.e. a negative amplitude value (trough) corresponds to an increase in acoustic impedance downwards (Simm and White 2002).

Corridor stacks for GrSk3 and GrSk4 are displayed in Figure 10. The recorded reflections are accurately correlated to depth and can therefore directly be assigned to lithology and other borehole data. The most prominent reflection events within the corridor stacks occur at the base (reflectors Z1, Z2, Z3) and top (reflectors X1, X2, X3) of the Upper Permian (Zechstein), and within the Middle Triassic (Buntsandstein; reflectors S1, S2).

Larger differences between the corridor stacks are mostly related to intervals where the reflection data is disturbed by residual ringing noise. The slope of this residual noise in the common-source gathers is similar to the slope of reflected upgoing waves, leading to positive superpositions and enhancements in the corridor stack, which cannot be distinguished from real reflection events.

In the eastern part of the North German Basin, the deepest seismic reflections that can be readily recognized and correlated are at or close to the base of the Zechstein. The reflecting interface Z1 is at the boundary between the Stassfurt Salt and the underlying Stassfurt Anhydrite (“Basalanhydrit”). This “base Zechstein” reflector is used as a marker horizon over the entire Southern Permian Basin area (Doornenbal et al. 2010).

At Groß Schönebeck, the base of the Zechstein is comprised of an 80 – 90 m thick sequence of anhydrite, salt, and carbonate layers, which is underlain by the sediments of the Rotliegend. This interlayered sequence of strata with high impedance contrasts gives rise to several strong and closely spaced reflection bands, which mark the base of Zechstein in the corridor stacks (see Figure 10 and Figure 11).

Reflections within the underlying Rotliegend interval are evident as well, which can now be assigned to individual sections of the reservoir. The corridor stacks for the Rotliegend reservoir interval are shown in Figure 11, together with well logs and lithology data for both wells. Some of the well logs are unfortunately not available for the lower parts of the wells, especially for GrSk4. Acoustic impedance has been calculated as the product of bulk density and sonic velocity.

The Lower Rotliegend is formed by andesitic volcanic rocks of the Altmark formation. At the depth of the possible top of the Carboniferous (reflector R8), which was postulated at 4216 mTVDSS for the GrSk3 well, no distinct reflection event is evident in both wells. This is consistent with other regions in the North German Basin, where the base of the Rotliegend series is essentially non-reflective (Guterch et al. 2010). The transition to the overlying Upper Rotliegend sediments occurs at a depth of 4146 mTVDSS. The corridor stacks show a positive reflection around this depth (reflector H6), which nevertheless has a somewhat different character and a slight offset in depth of several meters for both wells.

The succession of the Upper Rotliegend sediments starts with the Mirow formation, in which conglomerates are the dominant lithology. The clasts of the rock matrix are lithic fragments of the underlying volcanic rocks. The sediments of the overlying Elbe subgroup are of fluvial and aeolian facies (Gast et al. 1998). Within the lower part, sandstones with good reservoir properties, i.e. high porosities and permeabilities, are occurring within the Dethlingen formation. Within the wells, the Dethlingen sandstones, which are also known as the Elbe base sandstone, occur as a continuous interval with a thickness of about 100 m, approximately between a depth of about 4000 mTVDSS and 4100 mTVDSS. This interval is characterized by low gamma-ray values, bulk densities and

sonic velocities, which corresponds to a low shale content, and increased porosity. It is furthermore marked by a crossover of the bulk density and neutron porosity curves. Bauer et al. (2019) presented an approach to map the distribution and properties of this sandstone layer based on analysis of seismic attributes of the 3D surface seismic volume.

Above the Dethlingen sandstones, a succession of silt- and mudstones is following. The transition is marked by a change in the log response, with higher values for the gamma-ray, density, and sonic velocity readings, and a separation of the bulk density and neutron porosity curves. This change in density and velocity corresponds to an overall increase of acoustic impedance. The top of the sandstone interval correlates with a positive amplitude event at a depth of 4010 mTVDSS in both profiles (reflector R3). In GrSk4, another reflection (peak) occurs about 40 m below at a depth of 4051 mTVDSS, which correlates with a step-like decrease of both gamma-ray intensity and sonic velocity. This local change of the log response is not as evident in GrSk3, where only a very weak reflection event occurs at this depth.

The upper interval of the Rotliegend sediments is comprised of an interlayered sequence of silt- and silty mudstones (Hannover formation), with local occurrences of thin-bedded sandy layers. The succession of lithological units and interbeds differs between both wells, which is also reflected by the different character of the corridor stacks within this interval.

The different characteristics of the corridor stacks in the Upper Rotliegend are explained by lithological changes between the wells. Within the bottom part, the well trajectories have a horizontal distance of up to 475 m, and such lateral changes in lithology are typical for fluvial sediments. The observed character of the reflectors, with low reflectivity and lateral variability, is in line with other regions in the North German Basin, where deeper reflectors within the Rotliegend or Carboniferous commonly cannot be correlated over long distances, because they are of poor quality and often interrupted (Reinhardt 1993).

## 5 Summary and conclusions

Based on this survey, several important new experiences for DAS-VSP acquisition on wireline cable have been gathered. The presented results can be used in support of planning, execution, and evaluation of future surveys of this type.

Common-source gathers of the recorded data are dominated by arrivals of downgoing P waves, upgoing reflections, and tube waves. One characteristic of the recorded DAS-VSP data is that it is affected by a coherent noise, which is correlated among neighboring traces. This ringing noise is evident in common-source gathers as a conspicuous zigzag pattern confined to distinct depth intervals, and is occurring in narrow frequency bands. It is influenced by the cable tension and how the cable is aligned with the inner surface of the borehole, depending on changes of the borehole trajectory.

Several tests to determine the influence of the wireline cable tension on the mechanical coupling of the cable to the borehole wall have been performed. The highest signal amplitudes and best overall data quality were found to be achieved under almost full cable tension, and the main part of the data was acquired under these conditions. The results of these tests nevertheless also indicate that a reduction of coherent ringing noise can be achieved by adding cable slack. The interrelation between cable tension and configuration inside the borehole, mechanical coupling to the borehole wall, and recorded signal amplitudes needs further investigation.

After conversion to strain rate, the waveforms and frequency content of the DAS data display a high similarity to vertical component data of a conventional borehole geophone. However, upgoing reflections are recorded with opposite polarity, which confirms the results of earlier studies. The polarity of the reflection data was reversed during later processing, in order to match the polarity of conventional geophone data.

Most of the data has a very good signal-to-noise ratio. Nevertheless, in the GrSk3 well, a sudden reduction of SNR along the deeper part of the profile after the first recording day has been observed. As a larger movement of the cable can be excluded during this time, the cause of this change of acquisition characteristics remains elusive. The ringing noise can be suppressed to a large extent by suitable filtering methods.

From the zero-offset data, accurate time-depth relationships and velocity profiles were derived. The reflectivity along the boreholes could be mapped with high resolution. The strongest reflections occur at the base and the top of the Zechstein salt complex, and within the Buntsandstein. Nevertheless, in parts the interpretation of the corridor stacks is hampered by residual ringing noise, which is occurring within a short time window after the first break arrivals, and is difficult to be distinguished from true reflection events.

For the Rotliegend reservoir section, the sequence of reflection events in the corridor stacks shows a different character for both wells overall, which is explained by lateral changes in lithology. But it also displays local similarities: The top of the Dethlingen sandstone interval is marked by a positive reflection event in both wells.

This information can be used to identify a related reflector and track the distribution of this reservoir layer in a 3D seismic volume. Processing and interpretation of both 3D VSP and 3D surface seismic data is currently ongoing. The top of the volcanic rocks has a somewhat different response in both wells and no stronger event is obvious at the postulated top of the Carboniferous. The thickness of the volcanic rocks can therefore not be inferred from individual reflection events in the seismic data alone.

The DAS method has enabled measurements at elevated temperatures up to 150 °C and has led to significant time and cost savings compared to deployment of a conventional geophone chain. Such savings depend on the specific targets and conditions of an individual survey, as well as on the available technologies and performance of the equipment used. But for a VSP survey similar to this study, we would roughly estimate the operational effort to be reduced around a factor of 5 to 10.

*Data availability.* The seismic survey data ~~will be made~~ presented in this study is available ~~as data publications through GFZ Data Services~~ (<https://dataservices.gfz-potsdam.de/portal/>) under <https://doi.org/10.5880/GFZ.4.8.2021.001> (Henninges et al. 2021).

*Author contributions.* JH and CMK conceptualized the project. JH and MS planned and supervised fieldwork and data acquisition. EM, MS, CMK, and JH performed the seismic data processing and analysis. JH interpreted the data under discussion with all co-authors, and input from BN on geological well data. JH and EM prepared the manuscript with contributions from all co-authors.

*Competing interests.* The authors declare that they have no conflict of interest. CMK is chief executive editor of SE.

*Acknowledgements.* We gratefully acknowledge the contributions of Ernst Huenges, who led the efforts at the geothermal research platform Groß Schönebeck, and Klaus Bauer for providing major support during funding

acquisition and project administration. We are thankful for the smooth cooperation with Schlumberger and DMT GmbH & Co KG during data acquisition, as well as GGL Geophysik und Geotechnik Leipzig GmbH during survey planning, and Schlumberger and VSProwess Ltd during data processing. Jörg Schrötter, Christian Cunow, and Mathias Poser of GFZ supported fieldwork and acquisition of fiber-optic data. The manuscript has greatly benefitted from the constructive comments of Ariel Lellouch and another anonymous reviewer, which helped us to work out several important aspects of the paper more clearly. This project has been funded by the German Federal Ministry for Economic Affairs and Energy, grant no. 0324065, and the European Union's Horizon 2020 research and innovation programme under grant agreement no. 691728 (DESTRESS) and 676564 (EPOS-IP).

## References

- Bauer, K., Moeck, I., Norden, B., Schulze, A., Weber, M., and Wirth, H.: Tomographic P wave velocity and vertical velocity gradient structure across the geothermal site Groß Schönebeck (NE German Basin): Relationship to lithology, salt tectonics, and thermal regime, *J. Geophys. Res.*, 115, B08312, 10.1029/2009jb006895, 2010.
- Bauer, K., Norden, B., Ivanova, A., Stiller, M., and Krawczyk, C. M.: Wavelet transform-based seismic facies classification and modelling: application to a geothermal target horizon in the NE German Basin, *Geophys. Prospect.*, 10.1111/1365-2478.12853, 2019.
- Blöcher, G., Cacace, M., Reinsch, T., and Watanabe, N.: Evaluation of three exploitation concepts for a deep geothermal system in the North German Basin, *Comput. Geosci.*, 82, 120-129, 10.1016/j.cageo.2015.06.005, 2015.
- Cai, Z., Wang, Y., Liu, C., Zhang, Q., and Xu, X.: Cable noise analysis and suppression in DAS-VSP data, in: *AAPG/SEG International Conference and Exhibition*, Barcelona, Spain, 3-6 April 2016, 170, 2016.
- Chen, J., Ning, J., Chen, W., Wang, X., Wang, W., and Zhang, G.: Distributed acoustic sensing coupling noise removal based on sparse optimization, *Interpretation*, 7, T373-T382, 10.1190/int-2018-0080.1, 2019.
- Constantinou, A., Farahani, A., Cuny, T., and Hartog, A.: Improving DAS acquisition by real-time monitoring of wireline cable coupling, in: *SEG Technical Program Expanded Abstracts 2016*, 5603-5607, 2016.
- Correa, J., Egorov, A., Tertyshnikov, K., Bona, A., Pevzner, R., Dean, T., Freifeld, B., and Marshall, S.: Analysis of signal to noise and directivity characteristics of das VSP at near and far offsets-A CO2CRC Otway Project data example, *Leading Edge*, 36, 994a991-994a997, 10.1190/tle36120994a1.1, 2017.
- Daley, T. M., Freifeld, B. M., Ajo-Franklin, J., Dou, S., Pevzner, R., Shulakova, V., Kashikar, S., Miller, D. E., Goetz, J., Henningses, J., and Lueth, S.: Field testing of fiber-optic distributed acoustic sensing (DAS) for subsurface seismic monitoring, *The Leading Edge*, 32, 699-706, 10.1190/tle32060699.1, 2013.
- Daley, T. M., Miller, D. E., Dodds, K., Cook, P., and Freifeld, B. M.: Field testing of modular borehole monitoring with simultaneous distributed acoustic sensing and geophone vertical seismic profiles at Citronelle, Alabama, *Geophys. Prospect.*, 64, 1318-1334, 10.1111/1365-2478.12324, 2016.
- Dean, T., Cuny, T., and Hartog, A. H.: The effect of gauge length on axially incident P-waves measured using fibre optic distributed vibration sensing, *Geophys. Prospect.*, 65, 184-193, 10.1111/1365-2478.12419, 2017.
- Doornenbal, J. C., Abbink, O. A., Duin, E. J. T., Dusar, M., Hoth, P., Jasionowski, M., Lott, G. K., Mathiesen, A., Papiernik, B., Peryt, T. M., Veldkamp, J. G., and Wirth, H.: Introduction, stratigraphic framework and mapping, in: *Petroleum Geological Atlas of the Southern Permian Basin Area*, edited by: Doornenbal, J. C., and Stevenson, A. G., EAGE Publications b.v., Houten, 1-9, 2010.

- Egorov, A., Correa, J., Bóna, A., Pevzner, R., Tertyshnikov, K., Glubokovskikh, S., Puzyrev, V., and Gurevich, B.: Elastic full-waveform inversion of vertical seismic profile data acquired with distributed acoustic sensors, *Geophysics*, 83, R273-R281, 10.1190/GEO2017-0718.1, 2018.
- Elboth, T., Fugro Geoteam, Qaisrani, H. H., and Hertweck, T.: De-noising seismic data in the time-frequency domain, in: SEG Technical Program Expanded Abstracts, 2622-2626, 2008.
- Frignet, B. G., and Hartog, A. H.: Optical vertical seismic profile on wireline cable, SPWLA 55th Annual Logging Symposium, Abu Dhabi, UAE, May 18-22, 2014.
- Gast, R., Pasternak, M., Piske, J., and Rasch, H.-J.: Rotliegend in Northeastern Germany: Regional Overview, Stratigraphy, Facies and Diagenesis, in: Results of hydrocarbon exploration in Permian Rocks (Zechstein and Rotliegend) of the State of Brandenburg, Germany and in the Thuringian Basin between 1991 and 1996, edited by: Karnin, W.-D., Merkel, D., Piske, J., and Schretzenmayr, S., *Geologisches Jahrbuch*, A, Schweizerbart, Stuttgart, 59-79, 1998.
- Götz, J., Lüth, S., Henniges, J., and Reinsch, T.: Vertical seismic profiling using a daisy-chained deployment of fibre-optic cables in four wells simultaneously – Case study at the Ketzin carbon dioxide storage site, *Geophys. Prospect.*, 66, 1201–1214, 10.1111/1365-2478.12638, 2018.
- Griffiths, L. J., Smolka, F. R., and Tremblay, L. D.: Adaptive deconvolution; a new technique for processing time-varying seismic data, *Geophysics*, 42, 742-759, 10.1190/1.1440743, 1977.
- Guterch, A., Wybraniec, S., Grad, M., Chadwick, R. A., Krawczyk, C. M., Ziegler, P. A., Thybo, H., and De Vos, W.: Crustal structure and structural framework, in: Petroleum Geological Atlas of the Southern Permian Basin Area, edited by: Doornenbal, J. C., and Stevenson, A. G., EAGE Publications b.v., Houten, 11-23, 2010.
- Hartog, A., Frignet, B., Mackie, D., and Clark, M.: Vertical seismic optical profiling on wireline logging cable, *Geophys. Prospect.*, 62, 693-701, 10.1111/1365-2478.12141, 2014.
- [Henniges, J., Baumann, G., Brandt, W., Cunow, C., Poser, M., Schrötter, J., and Huenges, E.: A novel hybrid wireline logging system for downhole monitoring of fluid injection and production in deep reservoirs, Conference Proceedings, 73rd EAGE Conference & Exhibition, Vienna, Austria, 23-26 May 2011, C043, 2011.](#)
- [Henniges J., Martuganova E., Stiller M., Norden B., and Krawczyk C.M.: DAS-VSP data from the Feb. 2017 survey at the Groß Schönebeck site, Germany, GFZ Data Services, doi:10.5880/GFZ.4.8.2021.001, in review.](#)
- Huenges, E., Trautwein, U., Legarth, B., and Zimmermann, G.: Fluid Pressure Variation in a Sedimentary Geothermal Reservoir in the North German Basin: Case Study Groß Schönebeck, in: Rock Damage and Fluid Transport, Part II, edited by: Zang, A., Stephansson, O., and Dresen, G., *Pageoph Topical Volumes*, Birkhäuser Basel, 2141-2152, 2006.
- [Karrenbach, M., Kahn, D., Cole, S., Ridge, A., Boone, K., Rich, J., Silver, K., and Langton, D.: Hydraulic-fracturing-induced strain and microseismic using in situ distributed fiber-optic sensing, Leading Edge, 36, 837-844, 10.1190/tle36100837.1, 2017.](#)
- Krawczyk, C. M., Stiller, M., Bauer, K., Norden, B., Henniges, J., and Ivanova, A.: 3-D seismic exploration across the deep geothermal research platform Groß Schönebeck north of Berlin/Germany, *Geothermal Energy*, 7, 18, 10.1186/s40517-019-0131-x, 2019.
- [Lellouch, A., Lindsey, N. J., Ellsworth, W. L., and Biondi, B. L.: Comparison between Distributed Acoustic Sensing and Geophones: Downhole Microseismic Monitoring of the FORGE Geothermal Experiment, Seismol. Res. Lett., 91, 3256-3268, 10.1785/0220200149, 2020.](#)

- Lizarralde, D., and Swift, S.: Smooth inversion of VSP traveltime data, *Geophysics*, 64, 659-661, 10.1190/1.1444574, 1999.
- 475 Martuganova, E., Stiller, M., Bauer, K., Henniges, J., and Krawczyk, C. M.: Cable reverberations during wireline distributed acoustic sensing measurements: their nature and methods for elimination, *Geophys. Prospect.*, [submitted in review](#).
- Mateeva, A., Lopez, J., Potters, H., Mestayer, J., Cox, B., Kiyashchenko, D., Wills, P., Grandi, S., Hornman, K., Kuvshinov, B., Berlang, W., Yang, Z., and Detomo, R.: Distributed acoustic sensing for reservoir monitoring with vertical seismic profiling, *Geophys. Prospect.*, 62, 679-692, 10.1111/1365-2478.12116, 2014.
- 480 Mestayer, J., Cox, B., Wills, P., Kiyashchenko, D., Lopez, J., Costello, M., Bourne, S., Ugueto, G., Lupton, R., Solano, G., Hill, D., and Lewis, A.: Field trials of distributed acoustic sensing for geophysical monitoring, in: SEG Technical Program Expanded Abstracts 2011, Society of Exploration Geophysicists, 4253-4257, 2011.
- Moeck, I., Schandelmeier, H., and Holl, H.-G.: The stress regime in a Rotliegend reservoir of the northeast German Basin, *International Journal of Earth Sciences (Geol. Rundschau)*, 98, 1643-1654, 2009.
- 485 [Molteni, D., Williams, M. J., and Wilson, C.: Detecting microseismicity using distributed vibration, \*First Break\*, 35, 51-55, 2017.](#)
- Parker, T., Shatalin, S., and Farhadiroushan, M.: Distributed Acoustic Sensing – a new tool for seismic applications, *First Break*, 32, 61-69, 10.3997/1365-2397.2013034, 2014.
- 490 Reinhardt, H.-G.: Structure of Northeast Germany: Regional Depth and Thickness Maps of Permian to Tertiary Intervals Compiled from Seismic Reflection Data, in: *Generation, Accumulation and Production of Europe's Hydrocarbons III*, Special Publication of the European Association of Petroleum Geoscientists No.3., edited by: Spencer, A. M., Springer Berlin Heidelberg, Berlin, Heidelberg, 155-165, 1993.
- Sallas, J. J.: Seismic vibrator control and the downgoing P-wave, *Geophysics*, 49, 732-740, 1984.
- 495 Schilke, S., Donno, D., Chauris, H., Hartog, A., Farahani, A., and Pico, Y.: Numerical evaluation of sensor coupling of distributed acoustic sensing systems in vertical seismic profiling, in: SEG Technical Program Expanded Abstracts 2016, 677-681, 2016.
- Simm, R., and White, R.: Phase, polarity and the interpreter's wavelet, *First Break*, 20, 277-281, 10.1046/j.1365-2397.2002.00277.x, 2002.
- 500 Willis, M. E., Wu, X., Palacios, W., and Ellmuthaler, A.: Understanding cable coupling artifacts in wireline-deployed DAS VSP data, in: SEG Technical Program Expanded Abstracts 2019, 5310-5314, 2019.
- Yu, G., Cai, Z., Chen, Y., Wang, X., Zhang, Q., Li, Y., Wang, Y., Liu, C., Zhao, B., and Greer, J.: Walkaway VSP using multimode optical fibers in a hybrid wireline, *Leading Edge*, 35, 615-619, 10.1190/tle35070615.1, 2016.
- Zimmermann, G., Moeck, I., and Blöcher, G.: Cyclic waterfrac stimulation to develop an Enhanced Geothermal System (EGS)—Conceptual design and experimental results, *Geothermics*, 39, 59-69, 2010.
- 505



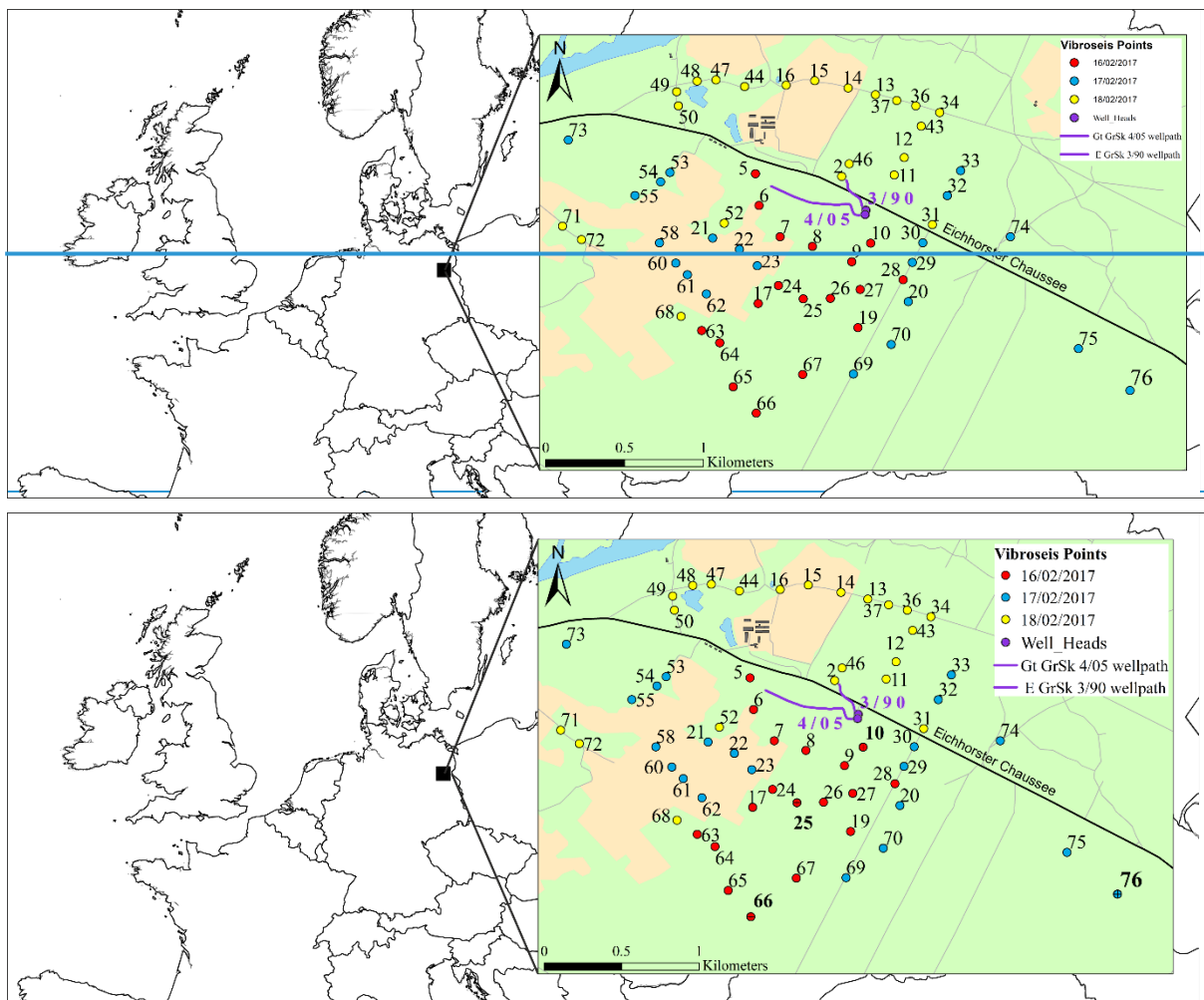


Figure 1: Overview map of central Europe with location of survey area in NE Germany. Inset shows detail of survey area with VSP source point positions and borehole trajectories of wells E GrSk 3/90 and Gt GrSk 4/05. **Selected source point positions for which common-source shot gathers are displayed in Figure 3 and Figure 4 are marked with crosses and printed with bold type.**

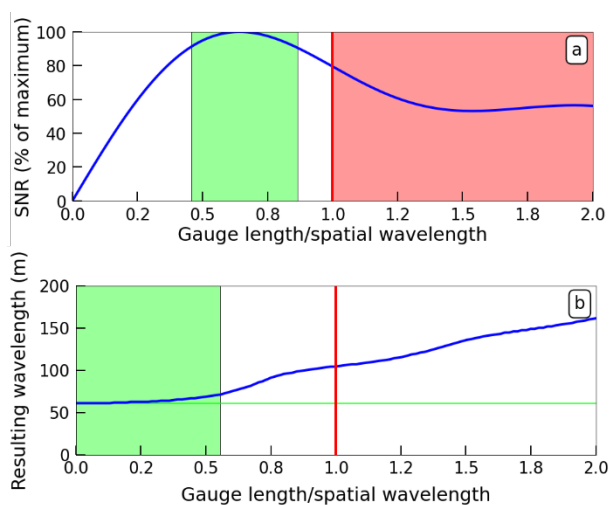
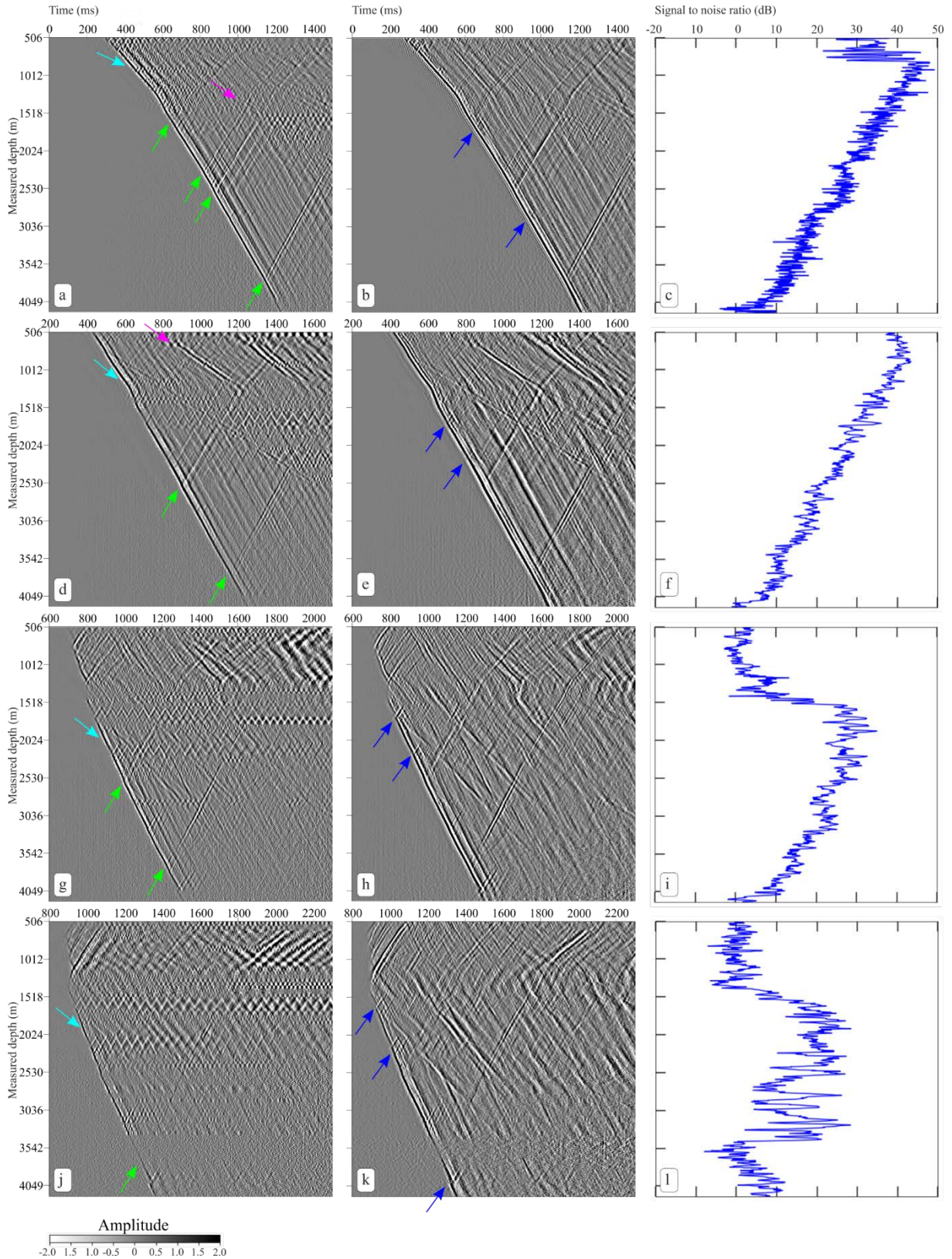
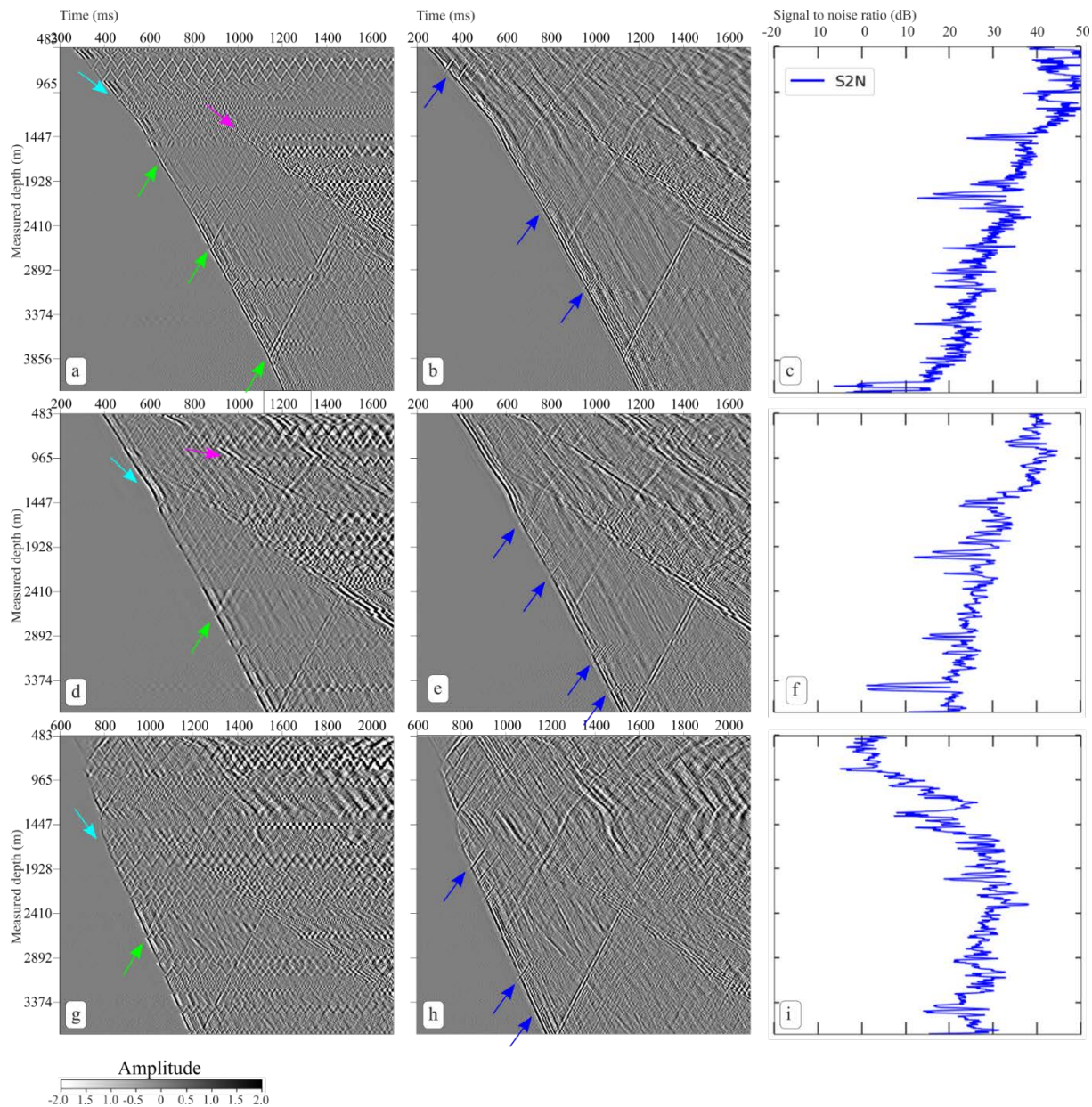


Figure 2: The signal-to-noise ratio (SNR) (a) and resulting wavelength (b) for different ratios of gauge length to spatial wavelength for a 10-112 Hz Klauder wavelet with a velocity of 4800 m/s. The green boxes indicate the range of ratios where  $\text{SNR} > 90\%$  of the maximum, and the resulting wavelength is within 3 m of the actual wavelength. If the gauge length is larger than the spatial wavelength (red box), the wavelet shape is distorted. The optimum conditions satisfying both constraints are found in the region where the two green boxes in (a) and (b) overlap.

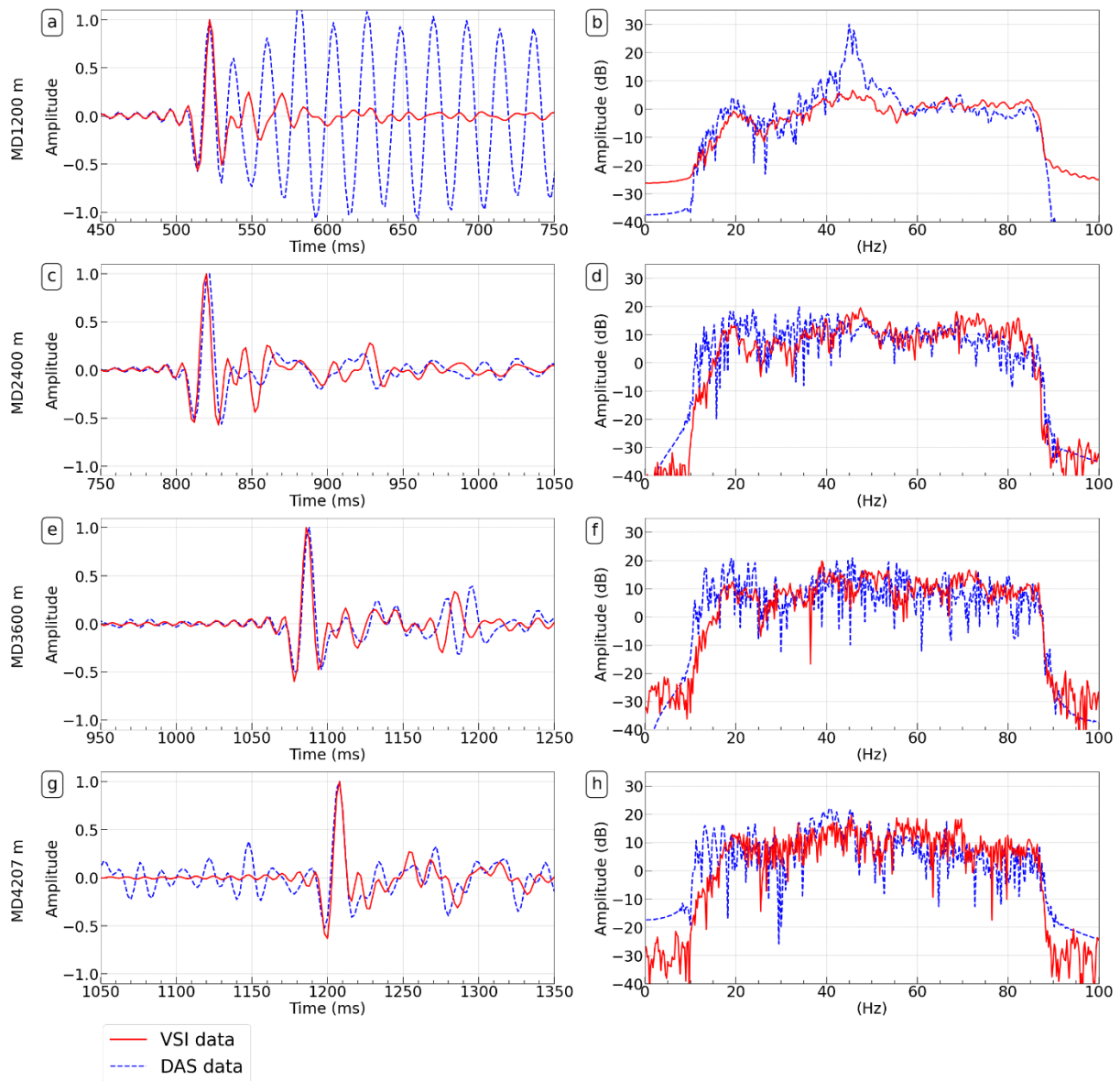


**Figure 3: Selected common-source gathers for well GrSk3 for zero offset, intermediate, and far offset source positions. First column of panels shows data after pre-processing for source positions 10 (a), 25 (b), 66 (g), and 176 (j). Second column (panels b, e, h, and k) shows the data for the same source positions after ringing-noise suppression (Burg adaptive deconvolution) and moderate coherency enhancement. For display, we applied a windowed trace equalisation. The third column (panels c, f, i, and l) shows the signal-to-noise ratio of the data after pre-processing. Colored arrows (exemplary): direct downgoing P wave (light blue), upgoing reflected P-P waves (green), tube wave (magenta), residual noise after application of ringing-noise filter (dark blue).**

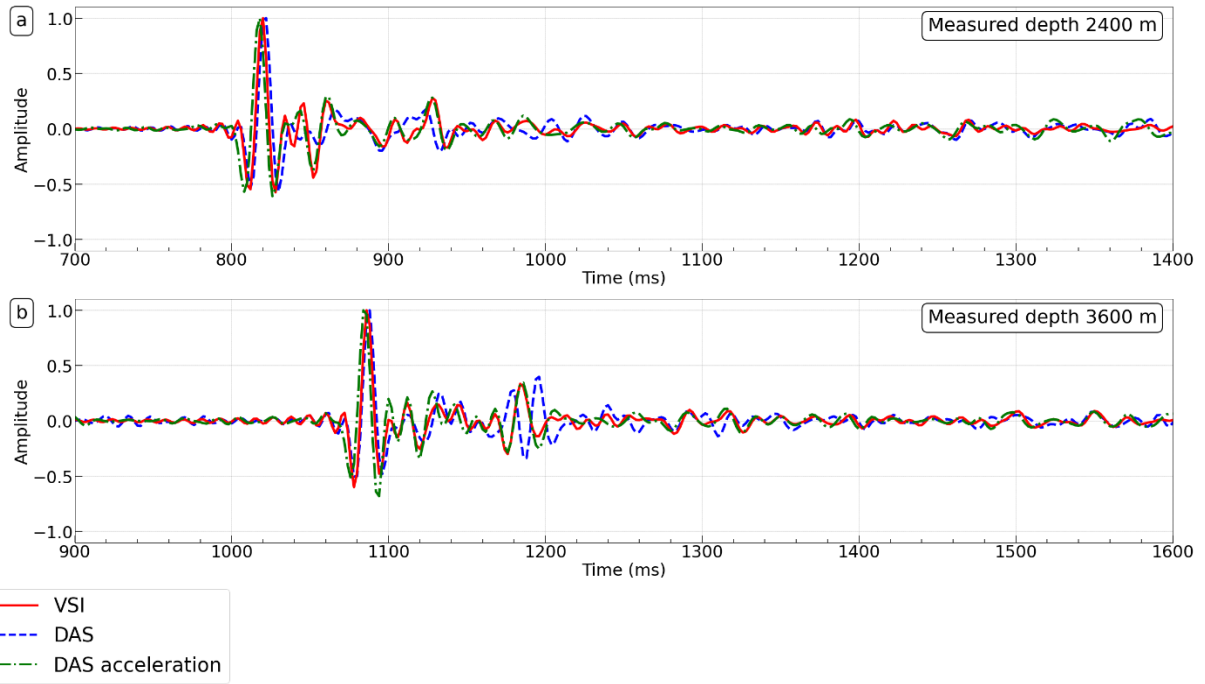




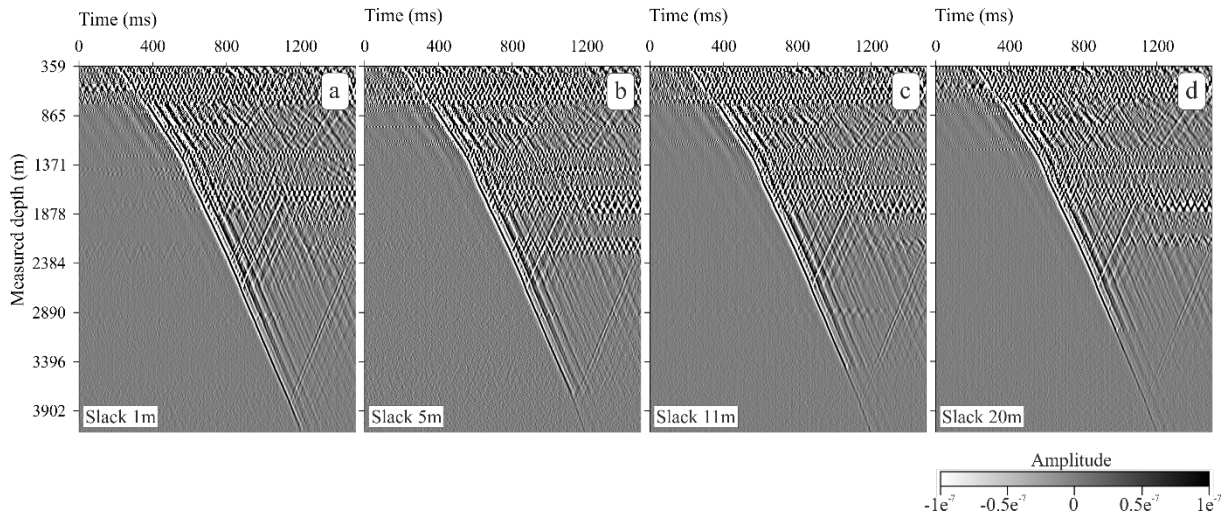
**Figure 4:** Selected common-source gathers for well GrSk4 for zero offset, intermediate, and far offset source positions. First column of panels shows data after pre-processing for source positions 10 (a), 25 (b), and 66 (g). Second column (panels b, e, and h) shows the data for the same source positions after ringing-noise suppression (Burg adaptive deconvolution) and moderate coherency enhancement. For display, we applied a windowed trace equalisation. The third column (panels c, f, and i) shows the signal-to-noise ratio of the data after pre-processing. Colored arrows (exemplary): direct downgoing P wave (light blue), upgoing reflected P-P waves (green), tube wave (magenta), residual noise after application of ringing-noise filter (dark blue).



**Figure 5: VSP traces and frequency spectra for borehole geophone data (VSI, red solid line) and DAS strain-rate data (blue dashed line) recorded in well GrSk4 at measured depths of 1200 m (a, b), 2400 m (c, d), 3600 m (e, f), and 4207 m (g, h). The borehole geophone is a three-component accelerometer, and the vertical component parallel to the tool/borehole axis is displayed. The recorded amplitudes have been normalized to the absolute maximum first break amplitude of the individual traces.**



**Figure 6: Comparison of data from the borehole geophone (VSI, red, acceleration), DAS converted to strain rate (blue) and DAS converted to acceleration (green), recorded at measured depths of 2400 m (a) and 3600 m (b) in well GrSk4. The recorded amplitudes have been normalized to the absolute maximum first break amplitude of the individual traces.**



**Figure 7: Comparison of common-source gathers recorded with cable slack of 1 m (a), 5 m (b), 11 m (c), and 20 m (d) for VP10 in well GrSk3. No additional amplitude normalization was applied.**



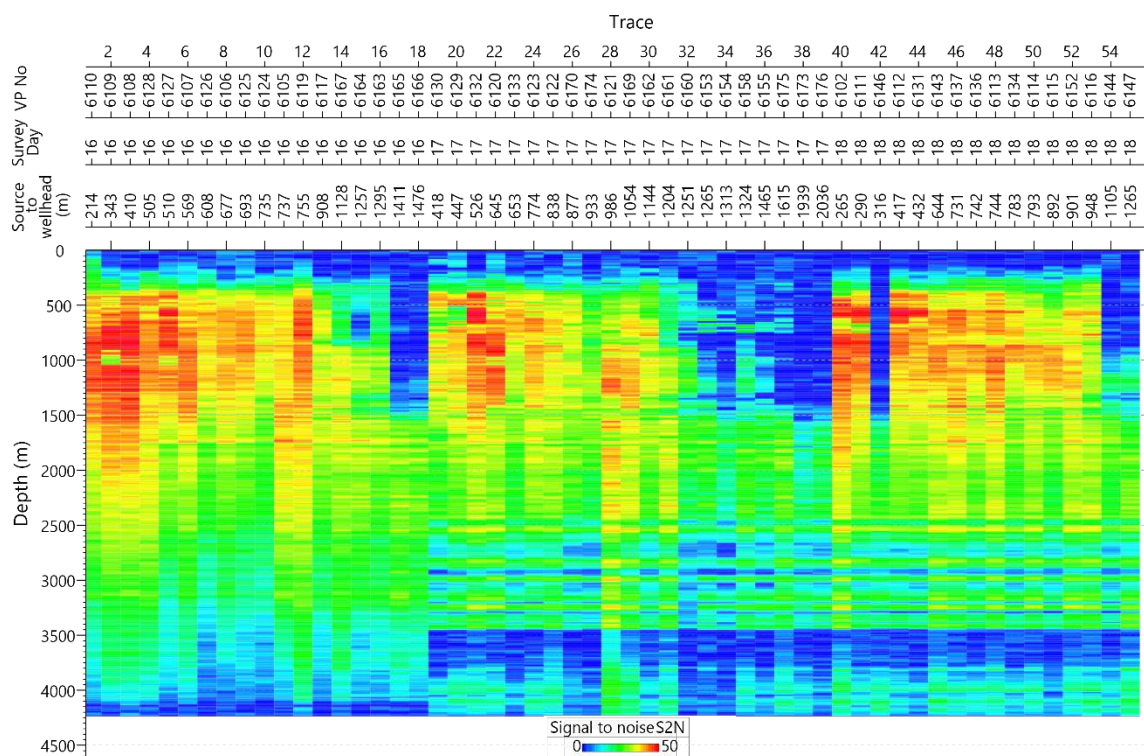


Figure 8: Signal-to-noise ratio (dB) for DAS-VSP data from well GrSk3.

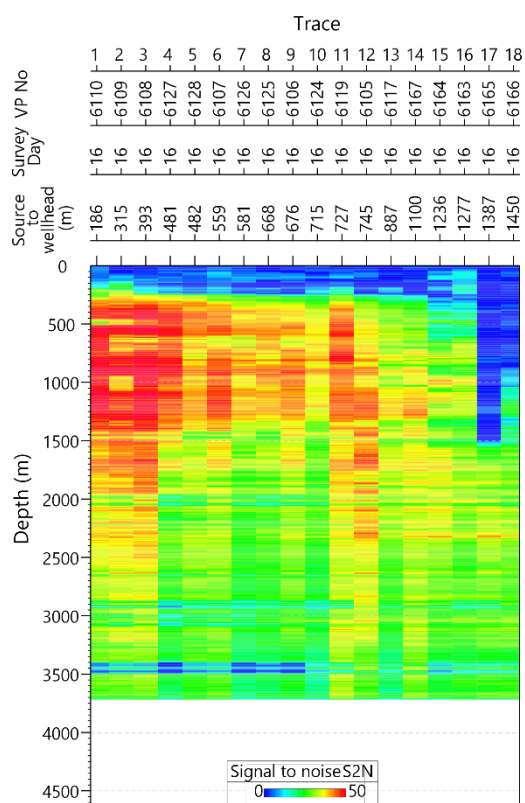
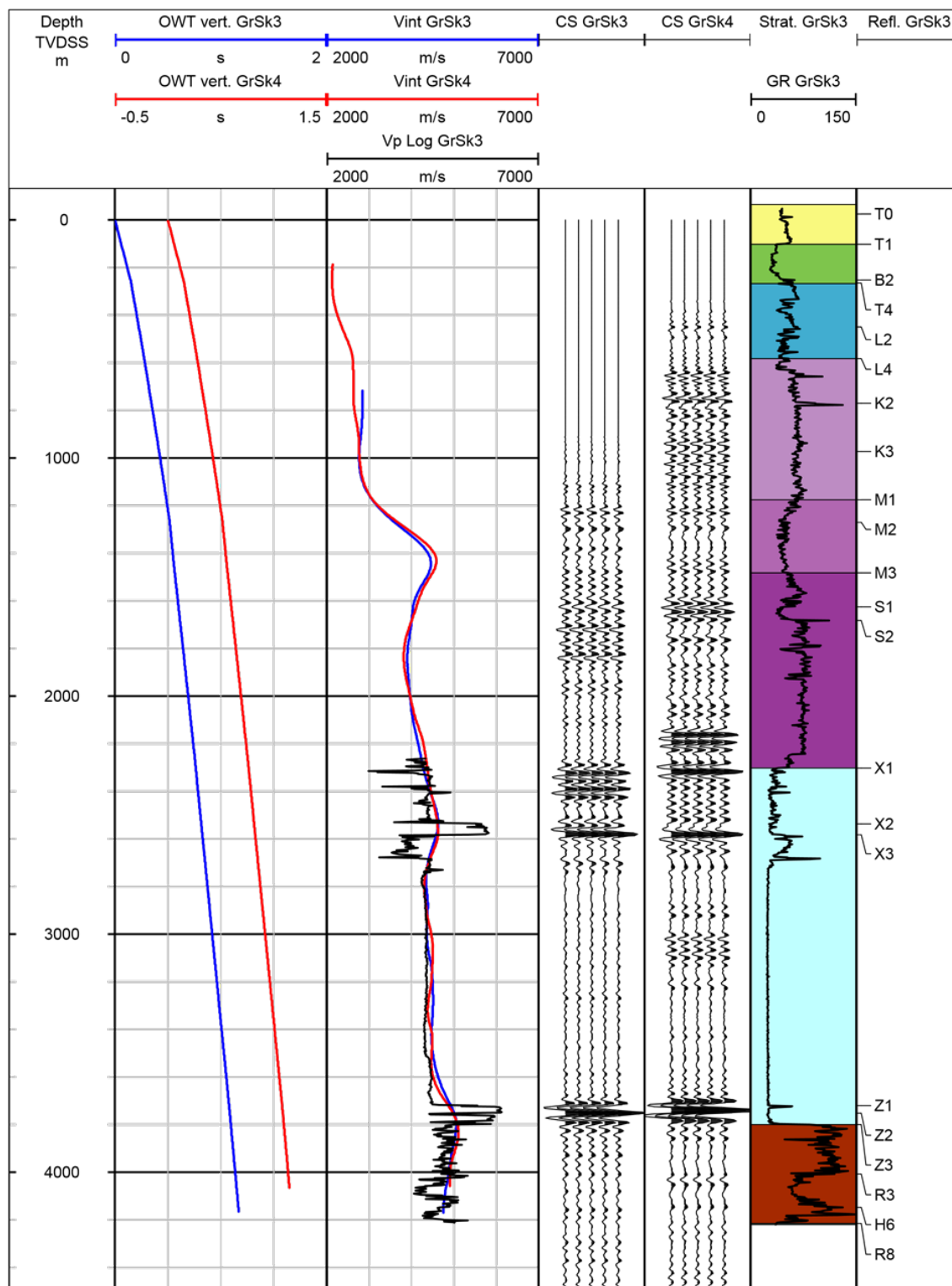


Figure 9: Signal-to-noise ratio (dB) for DAS-VSP data from well GrSk4.



Stratigraphy Legend

Quaternary and Tertiary	Upper Triassic (Keuper)	Upper Permian (Zechstein)
Cretaceous	Middle Triassic (Muschelkalk)	Lower Permian (Rotliegend)
Lower Jurassic (Lias)	Lower Triassic (Buntsandstein)	Carboniferous

Figure 10: Vertical one-way travel times (OWT vert), VSP interval velocities (Vint), acoustic log sonic velocities (Vp log), and corridor stacks (CS), together with stratigraphic units, gamma-ray log (GR) and seismic reflectors. TVDSS: True vertical depth below mean sea level.

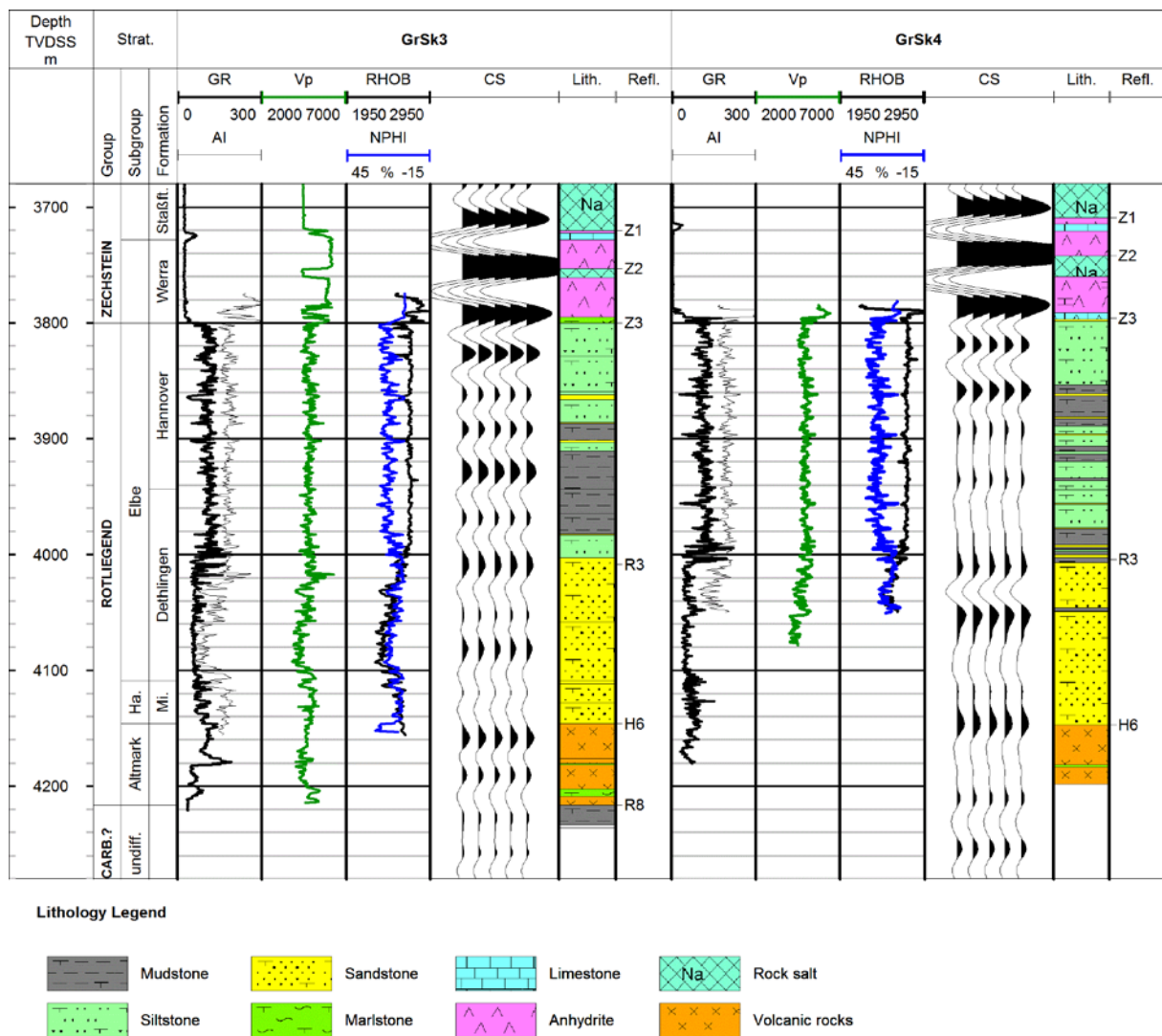


Figure 11: Corridor stacks (CS) for reservoir interval of the GrSk3 and GrSk4 wells, together with well logs (GR: gamma ray, Vp: sonic velocity, RHOB: bulk density, NPHI: neutron porosity), lithology (Lith.), stratigraphy (Strat.), and seismic reflectors (Refl.). Acoustic impedance (AI) was calculated from bulk density and sonic velocity. TVDSS: True vertical depth below mean sea level.