

Seismic signature of the COVID-19 lockdown at the city-scale: A case study with low-cost seismometers in the city of Querétaro, Mexico.

Raphael S.M. De Plaen¹, Víctor Hugo Márquez-Ramírez¹, Xyoli Pérez-Campos², F. Ramón Zuñiga Davila-Madrid¹, Quetzalcoatl Rodríguez-Pérez¹, Juan Martín Gómez González¹, Lucia Capra¹

¹Centro de Geociencias, Universidad Nacional Autónoma de México, Juriquilla, Querétaro, Mexico.

²Instituto de Geofísica, Universidad Nacional Autónoma de México, Mexico City, Mexico.

Corresponding author: Raphael S.M. De Plaen (raphael.deplaen@geociencias.unam.mx)

Abstract

Seismometers have detected the social response to lockdown measures implemented following the onset of the COVID-19 pandemic in cities around the world. This long-lasting ~~lockdown~~pandemic has been a particular challenge in countries such as Mexico, where the informal economy constitutes most of the working population. This context motivated the monitoring of the mobility of populations throughout the various phases of lockdown measures, independently from people's access to the internet and mobile technologies.

Here we use the variation of anthropogenic seismic noise in the city of Querétaro (central Mexico) recorded by a network of low-cost Raspberry Shake seismic stations to study the spatial and temporal variation of human activity in the city throughout the pandemic and during sporting events. The results emphasize the importance of densifying urban seismic networks and of tracking human activities without the privacy concerns associated with mobile technologies.

1 Introduction

In early 2020, the COVID-19 pandemic took the world by surprise and, given the absence of a treatment or vaccine it forced the implementation of lockdown measures to prevent its spread. Like other countries in the world, Mexico progressively implemented confinement measures after the World Health Organization declared it a pandemic on 11 March (WHO, 2020). The first confinement measures, focused on closing schools and university ~~campuses~~campi, were declared on 14 March and progressively evolved to a full suspension of non-essential activities on 24 March with the “Quedate en Casa” (“Stay at home”) campaign (Secretaría de Salud, 2020a). Lockdown measures came to a slow, progressive relaxation from 1 June after authorities declared the intention to gradually reopen the economy (Secretaría de Salud, 2020b).

~~A side product of the lockdown and the subsequent limitation of non-essential activities was the significant reduction in seismic noise generated by human activities. This phenomenon, well documented at a global scale (e.g., Cannata et al., 2020; Dias et al., 2020; Lecocq et al., 2020; Poli et al., 2020; Xiao et al., 2020, p. 19), has yet to be analyzed in Mexico, which typically benefits from a high seismic station coverage as a result of its significant seismicity.~~

30 The response to lockdown measures in Mexico is of particular interest as it is challenged by the high level of informal economy in the country (~60%, *OECD Economic Surveys*, 2019). Activities of the informal economy, which exclude illicit ones, are not taxed, regulated or monitored by any form of government and as a result not subject to social protection or other types of employment benefits (OECD & International Labour Organization, 2019). Workers and economic units participating in this economy do not have access to secure work, benefits, welfare protection, or representation, already generating significant risks
35 and vulnerabilities in regular times that are dramatically exacerbated during the COVID-19 pandemic. The uncertainty that transpires from this reality is further motivation to ~~makes particularly important~~ monitoring and characterizing how the lockdown measures were followed in the country .to better understand the impact of the pandemic on the different portions of the population and help inform the response of public health and government officials.

Since the beginning of the crisis, community mobility data published by tech and social media companies contributed
40 significantly to the analysis of social behavior changes following lockdown measures. However, these data result from aggregates of the personal history of users' time spent at different categories of activities, which is likely to trigger privacy concerns, although it has undergone anonymization procedures (Aktay et al., 2020). ~~In Mexico, s~~Such tools are also confronted with the limitations of access to the internet, especially creating a digital connectivity divide in rural areas, combined with the potentially limited utilization of smartphones.

45 For instance, internet adoption in rural areas of Mexico is estimated at 39.2% in rural areas with 53.8% of the population owning smartphones. In contrast, 71.2% of urban residents have access to the internet and 77.7% use smartphones ~~Constraining these observations to urban areas where internet adoption and smartphone utilization were respectively estimated to 71.2% and 77.7%, as opposed to 39.2% and 53.8% in rural areas~~ (Martínez-Domínguez & Mora-Rivera, 2020). ~~Using geophysical sensing, such as fiber optic distributed acoustic sensing (DAS), has the potential to mitigate these limitations and complement digital city sensing systems with direct measurements of public infrastructure usage (Lindsey et al., 2020).~~

50 Recently, anthropogenic seismic noise has also proved to be a good proxy for the reduction of human activities that followed the 2020 lockdown measures worldwide, especially near urban areas (e.g., Cannata et al., 2020; Dias et al., 2020; Lecocq et al., 2020; Poli et al., 2020; Xiao et al., 2020). This phenomenon, well documented at a global scale has yet to be analyzed in Mexico, which typically benefits from a high seismic station coverage as a result of its significant seismicity. Anthropogenic

55 seismic signals are generated by a wide range of sources ranging from traffic to ~~sportive-sporting~~ and cultural events (e.g., Diaz et al., 2020; Green & Bowers, 2008; Riahi & Gerstoft, 2015). When applied to the observation of the impact of confinement and social distancing measures, anthropogenic noise offers a perspective on the scale of the unprecedented measures authorities had to take to mitigate the spread of the pandemic. In most cases in the literature, anthropogenic seismic noise amplitude correlates with community mobility data (e.g., Cannata et al., 2020; Dias et al., 2020; Lecocq et al., 2020).
60 Therefore, analysis of seismic noise may offer the ability to attain mobility information without the privacy-related concerns and limitations of using mobile technologies. ~~(e.g., Cannata et al., 2020; Dias et al., 2020; Lecocq et al., 2020).~~

Here, we focus on the city of Querétaro, 200 km northwest of Mexico City. Even though the area has lower seismicity rates than other parts of Mexico ~~is not affected by frequent strong local seismicity by Mexican standards~~, it is currently equipped

with a network of seven Raspberry Shake 4D seismic stations spread throughout the city. The relative density of the network combined with the low local seismicity makes this city an ideal laboratory to explore the impact the lockdown measures on seismic noise and the general signature of human activities observed by seismic instruments.

The lockdown in Mexico was structured in three phases with growing constraints as the number of cases increased in the country from mid-March until June (Table 1). From June on, the authorities implemented a plan towards *la nueva normalidad* (the new normality, NN) with a monitoring system regulating the use of public spaces according to the risk of contagion of COVID-19. This system assigns a stoplight color to each state ranging from red to green as a function of the ongoing epidemiological risk (Secretaría de Salud, 2020, Semáforo COVID-19, Table 2). The different phases of lockdown and colors of stoplight are associated with critically additional constraints on non-essential activities. Under the assumption that most people respected those regulations, the anthropogenic noise is expected to vary accordingly.

Table 1 Descriptions of the early phases of the federal lockdown in Mexico (Secretaría de Salud, 2020a).

Phases	Announcement/ implementation dates	Description
Phase 1	14-03-2020/21-03-2020	Importation of the virus with dozens of identified infected travelers entering the country. Closing of schools and universities with early recess.
Phase 2	24-03-2020	Community propagation of the virus with hundreds of infected people and the origin of the infections is no longer well identified. Suspension of classes, events and meetings of more than 100 people. Suspension of work activities that involve the mobilization of people in all sectors of the society and intensification of basic sanitary prevention measures. Start of the “Quédate en Casa” campaign.
State of Sanitary Emergency	30-03-2020	Immediate suspension of non-essential activities in the public, private and social sectors;
Phase 3	21-04-2020	National epidemiological stage with thousands of confirmed infectious cases throughout the country. The measures to stay in homes are reinforced with the limitation of non-essential activities.

Table 2. Categories of the epidemiological risk stoplight during the “new normality” in Mexico (Secretaría de Salud, 2020b).

Color	Description
Red	Only essential businesses are allowed, people are encouraged invited to shelter at home.
Orange	Essential businesses are allowed, non-essential businesses are allowed to operate with up to 30%

	of the personnel, open public spaces are opened with a limited capacity.
Yellow	All businesses are allowed to operate. Open public spaces are open at regular capacity, and closed public spaces at reduced capacity. All activities must be carried out with basic preventive measures.
Green	All activities are allowed at regular capacity, including school.

2 Material and method

2.1 Data

80 The Querétaro metropolitan zone (QMZ) is monitored by a seismic network operated by the Center of Geosciences (UNAM-Campus Juriquilla). As of 2020, the network, designed for studies of local and regional events, is composed of seven Raspberry Shake 4D stations that each incorporate a vertical component geophone and a 3-component accelerometer (Figure 1).

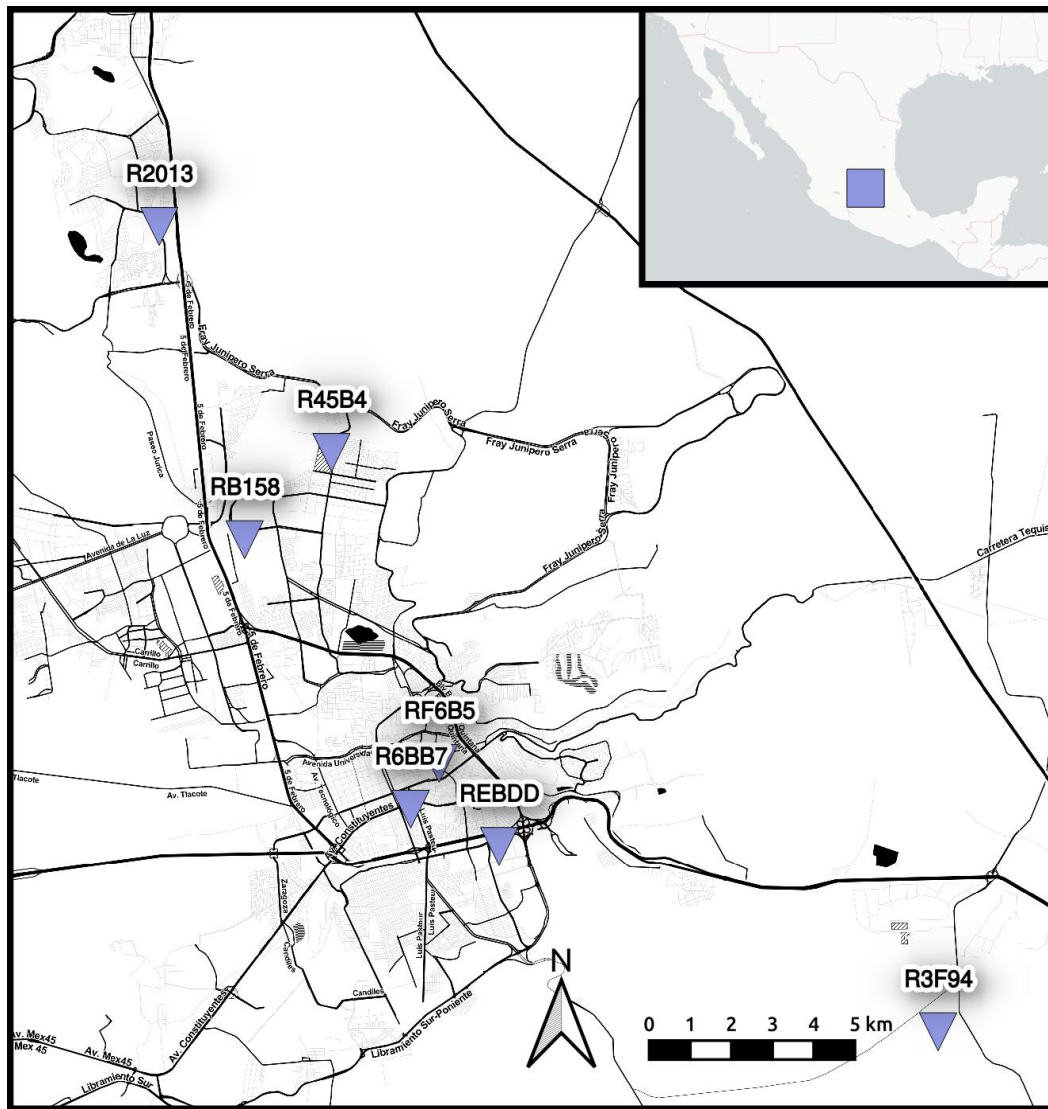


Figure 1. The seismic network of the metropolitan zone of Querétaro. The inverted triangles are the location of the stations used in this study. The square in the inset shows the location of the city of Querétaro (map tiles by Stamen Design, under CC BY 3.0, data by ©OpenStreetMap contributors 2020 distributed under a Creative Commons BY-SA License).

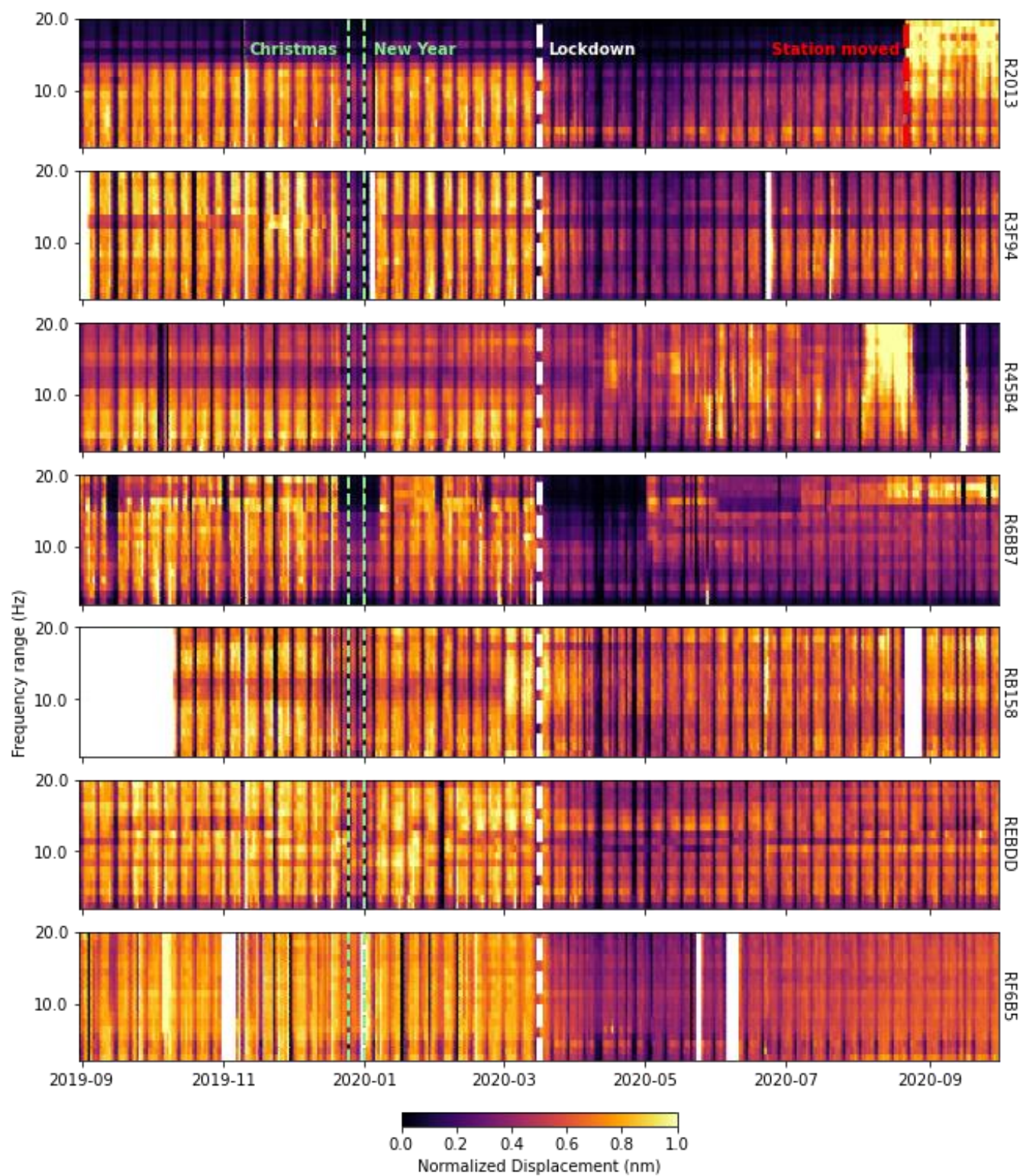
85

These low-cost sensors were demonstrated to perform suitably well for monitoring a large range of local and regional earthquake magnitudes have proved to efficiently densify backbone networks to monitor the vertical motion of local and global seismic activity from all magnitudes of earthquakes and remain on scale also to measure the motion generated by larger more powerful local earthquakes (Anthony et al., 2019). Although the accelerometers are capable of recording larger, more powerful

- 90 earthquakes, they have high self-noise levels and are not able to resolve most cultural activity. Our analysis in this study is therefore restricted to the vertical component geophone data. All stations record continuous data at a sampling rate of 100 Hz except for station R2013 recording at 50 Hz. Of the three stations installed near the historic center, RF6B5 and R6BB7 are both installed in cultural centers that suspended their activities since the beginning of the confinement, and REBDD is installed in the Corregidora soccer arena, which has a capacity of ~34000.
- 95 The stations located further from the center of the city are installed in university campi (R2013 – UNAM Campus Juriquilla, R45B4 - Universidad Tecnológica de Querétaro, and R3F94 - Universidad Politécnica de Querétaro), and in the Benito Juarez industrial park (RB158). All the network stations are within 5 kilometers of four-lanes highways with 90-100 km/h speed limits and significant traffic. The period analyzed here extends from 1 November 2019 to 1 October 2020.

2.2 Anthropogenic noise analysis

- 100 The QMZ network was designed to study natural processes, specifically local and regional tectonic earthquakes, rather than human-generated signals. Nevertheless, the recorded signal is subjected to a significant amount of noise, whether systematic (instrumental noise, ~~numerical conversion~~), natural (~~first and second~~-microseisms, atmospheric, etc.), or human-made. The latter includes a broad spectrum of potential sources typically recorded between 2 and 20 Hz, such as traffic, public transportation, pedestrians, and industries.(e.g., Diaz et al., 2020; Poli et al., 2020).
- 105 Human-generated noise is also characterized by a strong diurnal variability and higher amplitudes during business days than weekends and public holidays. As a result, we measured the anthropogenic noise by using the signal between 7 am and 7 pm local time. Using the same method as Lecocq et al. (2020), we computed the power spectral density (PSD) using Welch's method (Welch, 1967) from 30-minute windows with a 50 percent overlap.
- The time series were extracted from the root mean square (seismic RMS) ~~of the time-domain displacement amplitude of the seismic signal~~.
- 110 The seismic RMS was first implemented using a narrow band of 1 Hz for multiple frequencies ranging from 1 to 20 Hz to better identify the stable frequency range most affected by the lockdown measures (Figure 2). The resulting time series were then used to identify the Spearman correlation coefficient between each narrowband seismic RMS and each community mobility category (Figure 3).



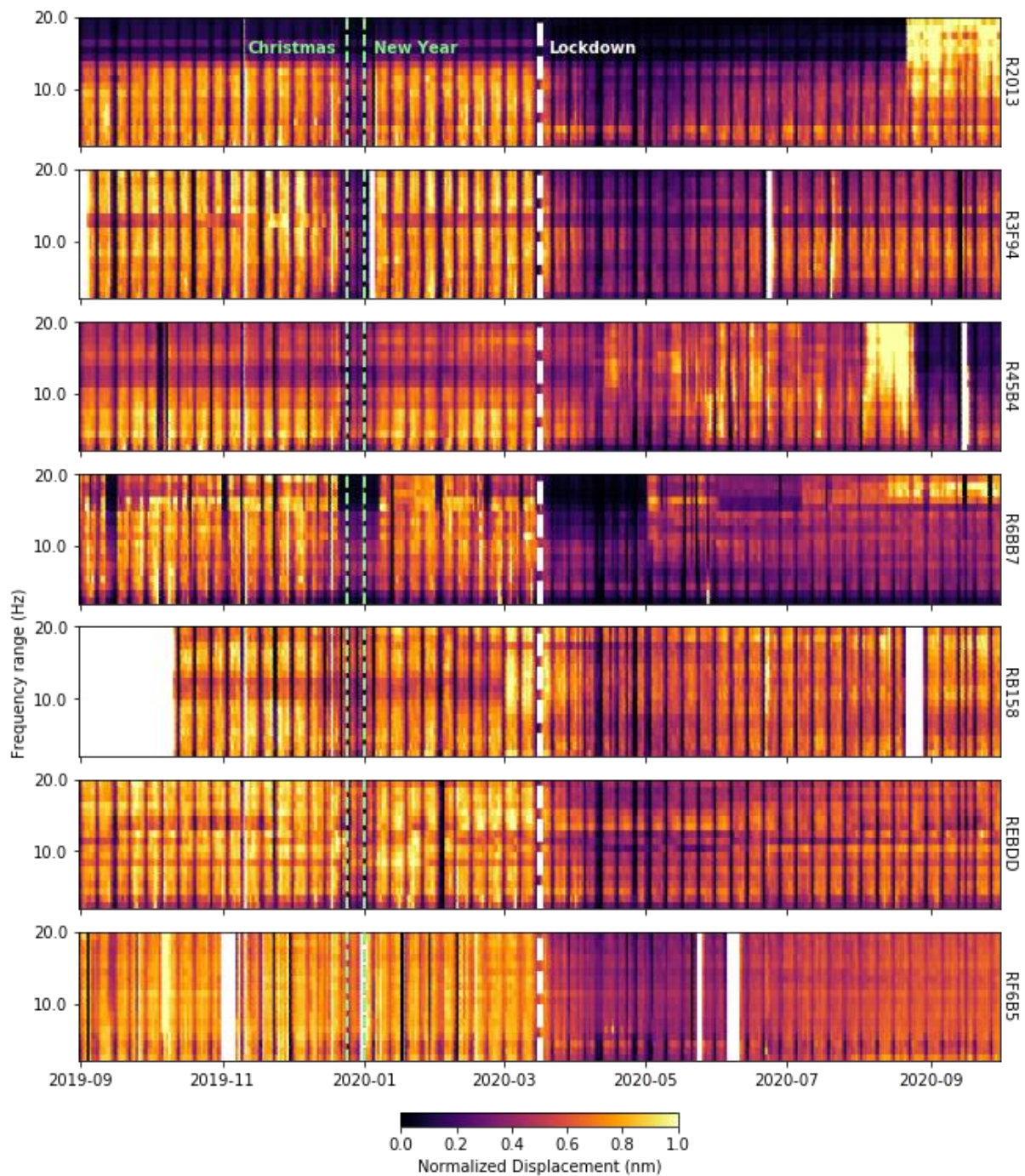
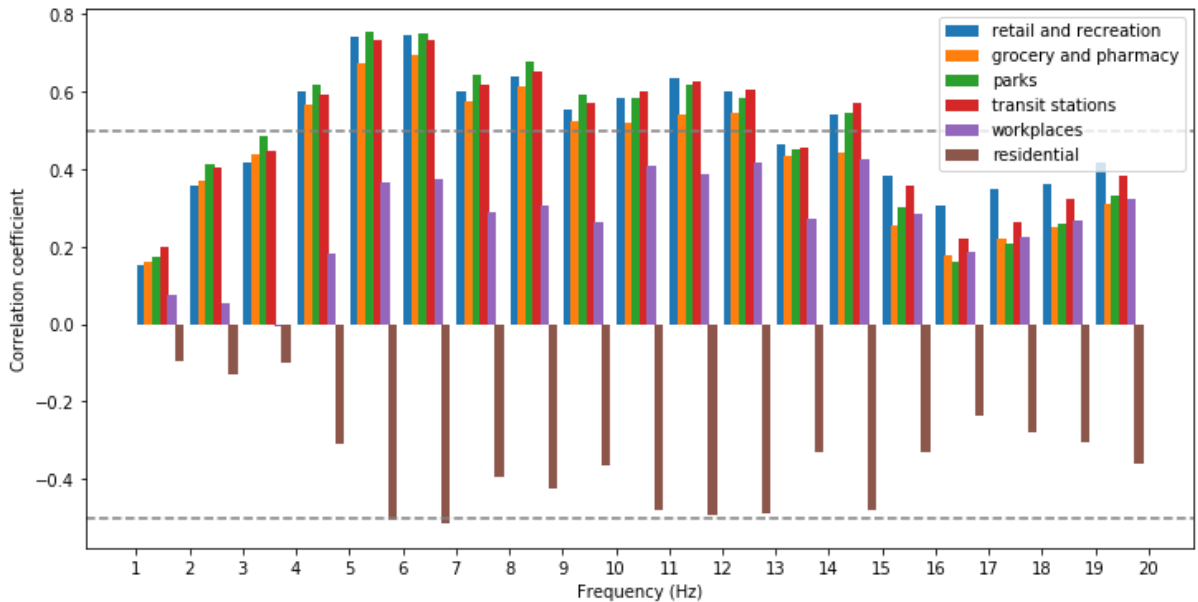
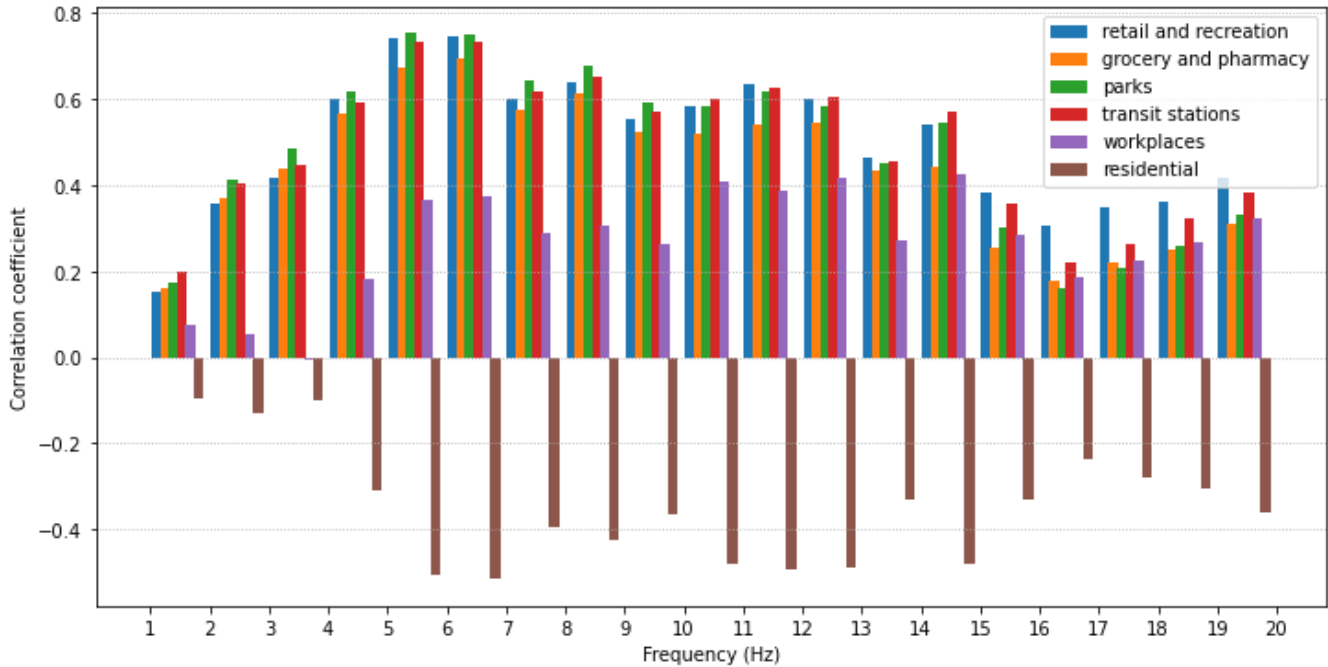


Figure 2. ~~Normalized Variations~~ variation of RMS displacement in 1 Hz frequency bins of seismic RMS measured with narrow 1-Hz frequency band from 1 to 20 Hz at all stations. The typical succession of business days and weekends can clearly be observed, but the largest reductions in seismic noise levels are identified during the Christmas holi day (green dashed lines are

120

Christmas and New Year, respectively) and following the implementation of lockdown measures mid-March 2020 (white dashed line). Note that station R2013 was moved late August 2020 (red dashed line).



125

Figure 3. Correlation coefficient between the seismic RMS in narrow 1 Hz frequency band from 1 to 20 Hz at station R6BB7 and the Google community mobility in the high categories of retail and recreation, groceries and pharmacy, parks, transit stations, workplaces, and residential premises. The period considered extends from 15 February 2020 to 1 October 2020 and the highest correlation and anticorrelation are identified between 4 and 14 Hz.

2.3 Mobility data

Since the beginning of the pandemic, Google, along with other tech and social media companies (e.g., WAZE, Apple, Facebook), started sharing community mobility data created with aggregated, anonymized sets of data from users' location history (Google, 2020). Here we focus on data provided by Google as they are likely to sample a larger portion of the population and more heterogeneous social backgrounds (González Alma Delia et al., 2018). These reports offer analyses of movement trends over time by geography, across different high categories of places defined as retail and recreation, groceries and pharmacies, parks, transit stations, workplaces, and residential. The data reflects the time visitors spent in the different categories of places compared to baseline days, calculated as the median value from the arbitrary 5-week period from January 3 to Feb 6 2020. Each value in the report is, therefore, a measurement relative to 7 individual values of the corresponding day of the week during the baseline period.

The index in the residential category is calculated using the average amount of time in hours spent at places of residence by individual users in a given day and geographic area. The workplace index is calculated as a count of users spending more than 1 hour at their places of work each day and is aggregated by their place of residence. The index for all the remaining categories counts the number of unique users who visited a public place of the given category in a given day with individual users contributing at most once to each category and up to 4 pairs of category-location per day (Aktay et al., 2020).

These data are imperfect on many levels, especially when applied to a city in Mexico. The raw data only samples the portion of the population with stable access to the internet and actively using the Google services. Evidence shows that the urban population is far better connected than the rural, and Android is by far the leading operative system with over 80% of the Mexican market (González Alma Delia et al., 2018; Martínez-Domínguez & Mora-Rivera, 2020).

The data are anonymized using libraries of differentially private algorithms, which add Laplace noise to protect each metric with differential privacy (Aktay et al., 2020). Furthermore, metrics for which the geographic region is smaller than three kilometers squared, or for which the differentially private count of contributing users after noise addition is smaller than 100, are discarded. The original data is by design far from transparent, leading to significant uncertainties on features such as the number of people, or the delimitation of the locations sampled (e.g., Lecocq et al., 2020).

In this work, we used data for the state of Querétaro, the smallest spatial granularity level available for the region. Since the QMZ contains ~64% of the population and the largest portion of the urban population likely to use such mobile technology in the state (INEGI, 2016), we consider this approximation acceptable for our purposes.

With those limitations, in the absence of a better option, these community mobility data offer the best solution to specifically track the social response of the population to lockdown measures and compare them to ambient noise monitoring.

3 Results and discussion

Significant reduction of the seismic RMS following the implementation of lockdown measures are observed at all narrow frequency bands between 1 and 20 Hz. Higher correlation coefficients between the community mobility and the Seismic RMS were obtained between 4 and 14 Hz, leading us to concentrate on that frequency range which is consistent with Lecocq et al. (2020).

To better interpret the variation of seismic RMS relative to the community mobility, we converted those values to percentage of change according to the corresponding day of the week during a baseline period. The baseline is calculated as the median value for the corresponding day of the week from 13 January to 2 March, excluding 3 February, which was a holiday. This baseline period is different from the one used for the Google community mobility; it is a larger period, starting later to avoid any influence from the end of the Christmas and New Year school holidays. The baseline period finishes before the announcement by the World Health Organization that COVID-19 had officially become a pandemic.

The resulting time series show less impact from weekends, but they are characterized by lower noise levels (Figure 4). Instead, days such as public holidays with anthropogenic noise levels that are out of the ordinary are specifically emphasized with reductions from -20 to -50% registered at all stations. With the implementation of the first lockdown measures, the relative noise level started to progressively decrease at all stations except for RB158, located in the Benito Juarez industrial park, where the noise level remained 20 to 50% higher than the baseline from early March. Noise levels at this station decreased after the declaration of sanitary emergency and on the Good Friday holiday but then displayed a slow progressive increase until June 1st and significantly remained above baseline. This suggests a sustained higher than normal level of activity in the close vicinity of the industrial park even as the Mexican government suspended non-essential activities in the public, private, and social sectors. This high level of activity could be the result of essential activity such as the delivery of food and supplies and would explain why this higher level of activity was later sustained.

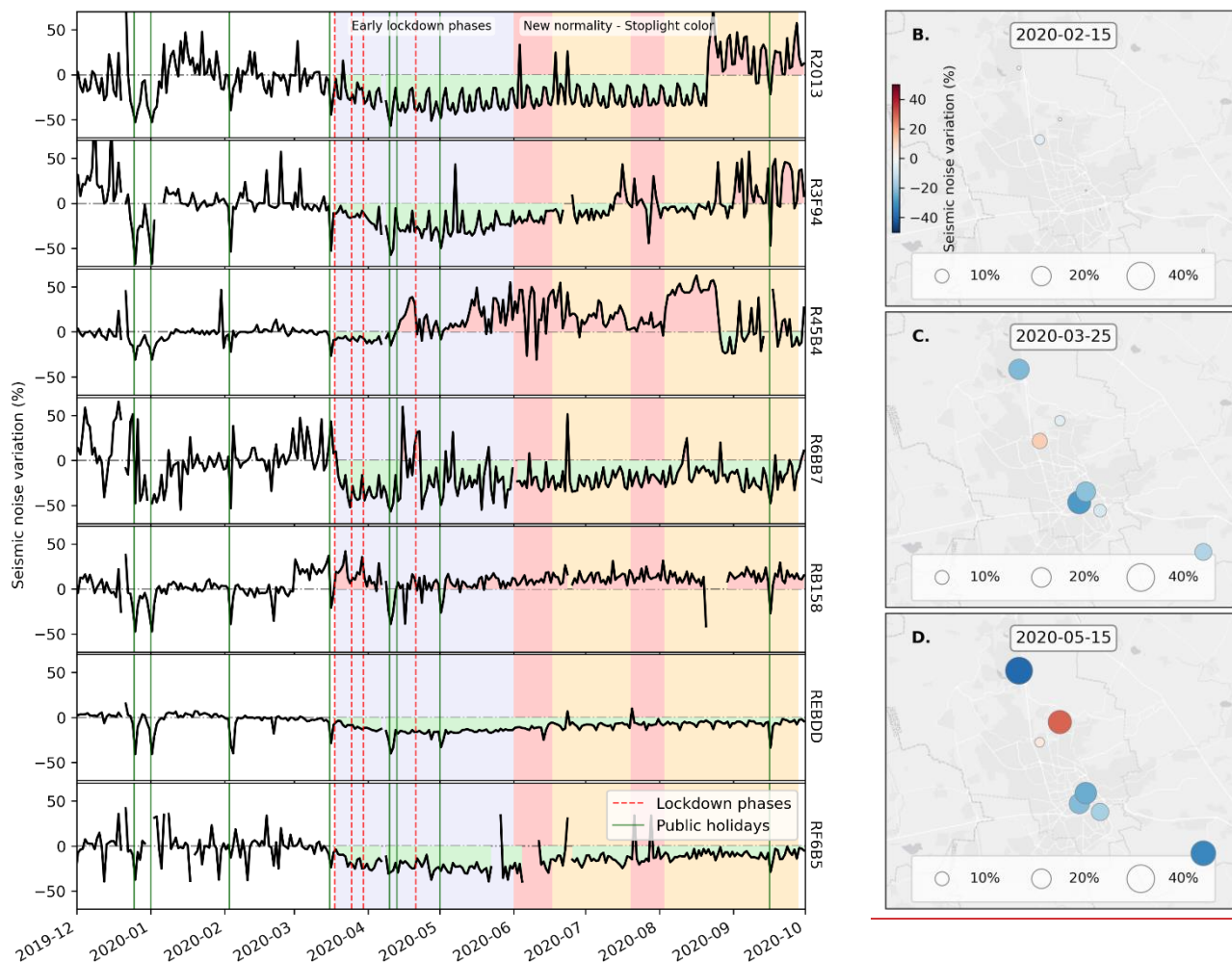


Figure 4. Variation of seismic RMS between 4 and 14 Hz in percent at all 7 stations of the network relative to the median of the corresponding day of the week during the baseline period of 13 January to 2 March ~~(A)~~. The public holidays are indicated with ~~blue dashed green vertical~~ lines and the implementation of lockdown measures is indicated as the red dashed line. The purple span corresponds to the early lockdown phases and the red and orange spans after 1 June are the corresponding stoplight color for the “New Normality”. ~~(B) to (D) are the maps of those corresponding variations on the 15 February, 25 March, and 15 May 2020, respectively (Map tiles by Esri, under CC BY 4.0, data by ©OpenStreetMap contributors 2020 distributed under a Creative Commons BY-SA License).~~

All the other stations displayed significant noise reduction until at least the end of the Easter Holidays (12 April 2020). During this period, station R45B4, located at the Universidad Tecnológica de Querétaro Campus (UTQ), displayed the smallest change with noise levels dropping by less than 10% ~~the lowest reduction with noise levels of less than 10%~~, followed by sustained increased levels up to 30% above the baseline as a result of roadworks on a neighboring avenue. This high level of seismic

190 RMS at this station holds up until the end of August. It can safely be attributed to the roadwork in the nearfield rather than a specifically lockdown-related human activity change.

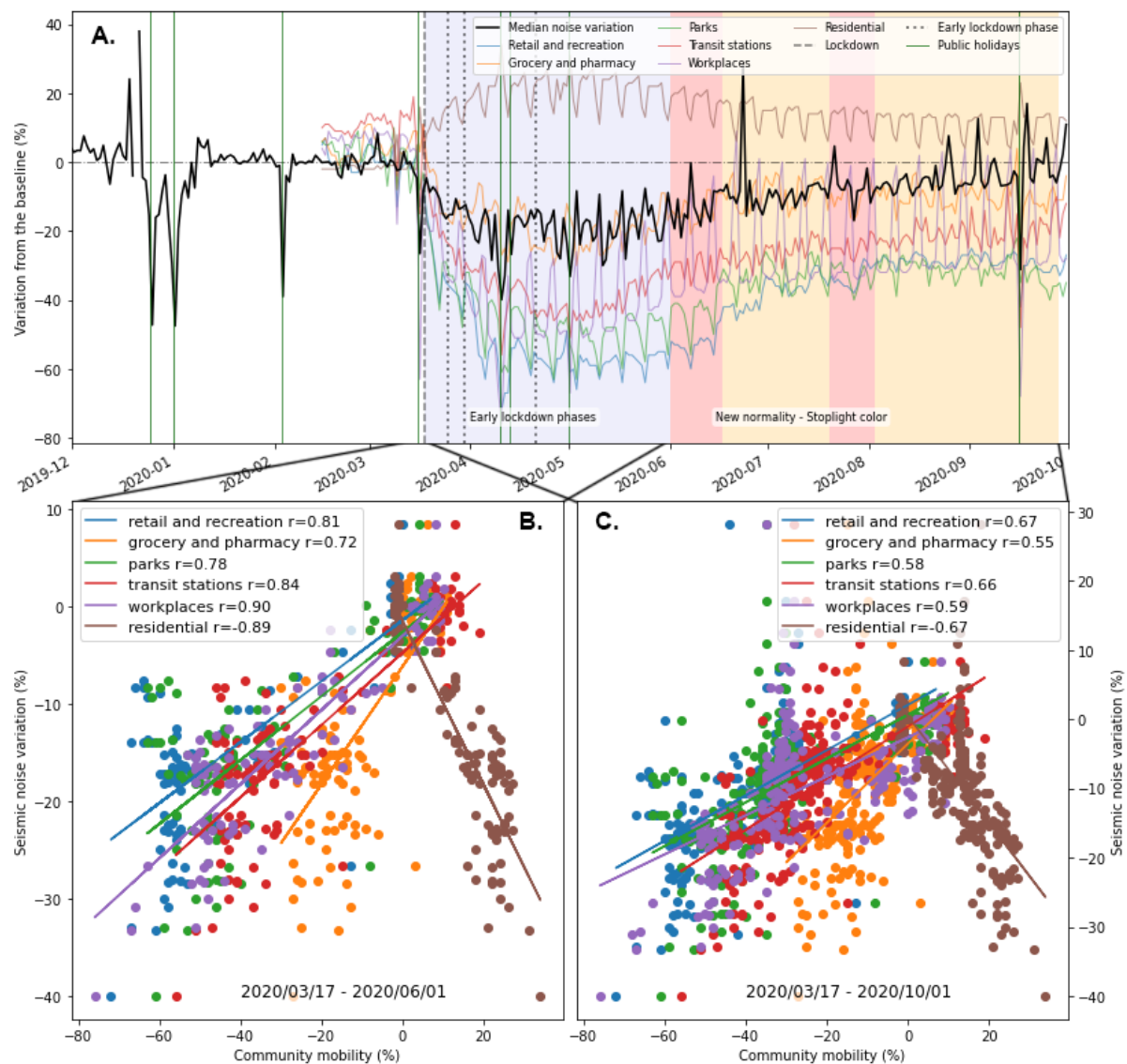


Figure 5. (A) Median of the variation of the seismic RMS at all stations, relative to the median of the corresponding day of the week during the baseline period of 13 January to 2 March, and variation of the Google community mobility in 6 high-level categories. The public holidays are indicated with blue dashed lines and the implementation of lockdown measures is indicated as the black dashed line. The purple span corresponds to the early lockdown phases and the red and orange spans after 1 June are the corresponding stoplight color for the “New Normality”. Cross-plot between the median seismic RMS of the network and the Google community mobility in 6 high-level categories during the early lockdown phases (B) and including the new normality (C). The spearman correlation coefficients between the median seismic RMS and each category of community mobility and the corresponding p-values are provided in the legend.

The median of all the stations better illustrates this change, with a progressive decrease through the lockdown phases 1 and 2 and the state of sanitary emergency until the Good Friday holiday (10 April 2020) that reached ~40% under the baseline (Figure 5A). The median then slightly increased followed by a decrease after phase 3 of the lockdown up until May 1st (Labor Day holiday). The noise then increased again progressively until the implementation of the stoplight system of the NN on June 1st. From the end of the Easter holidays to June 1st, stations REBDD, RF6B5, R3F94, R2013, and R6BB7 maintained an average noise level of -19.31, -27.93, -31.99, -32.70, and -35.68% respectively (Figure 4).

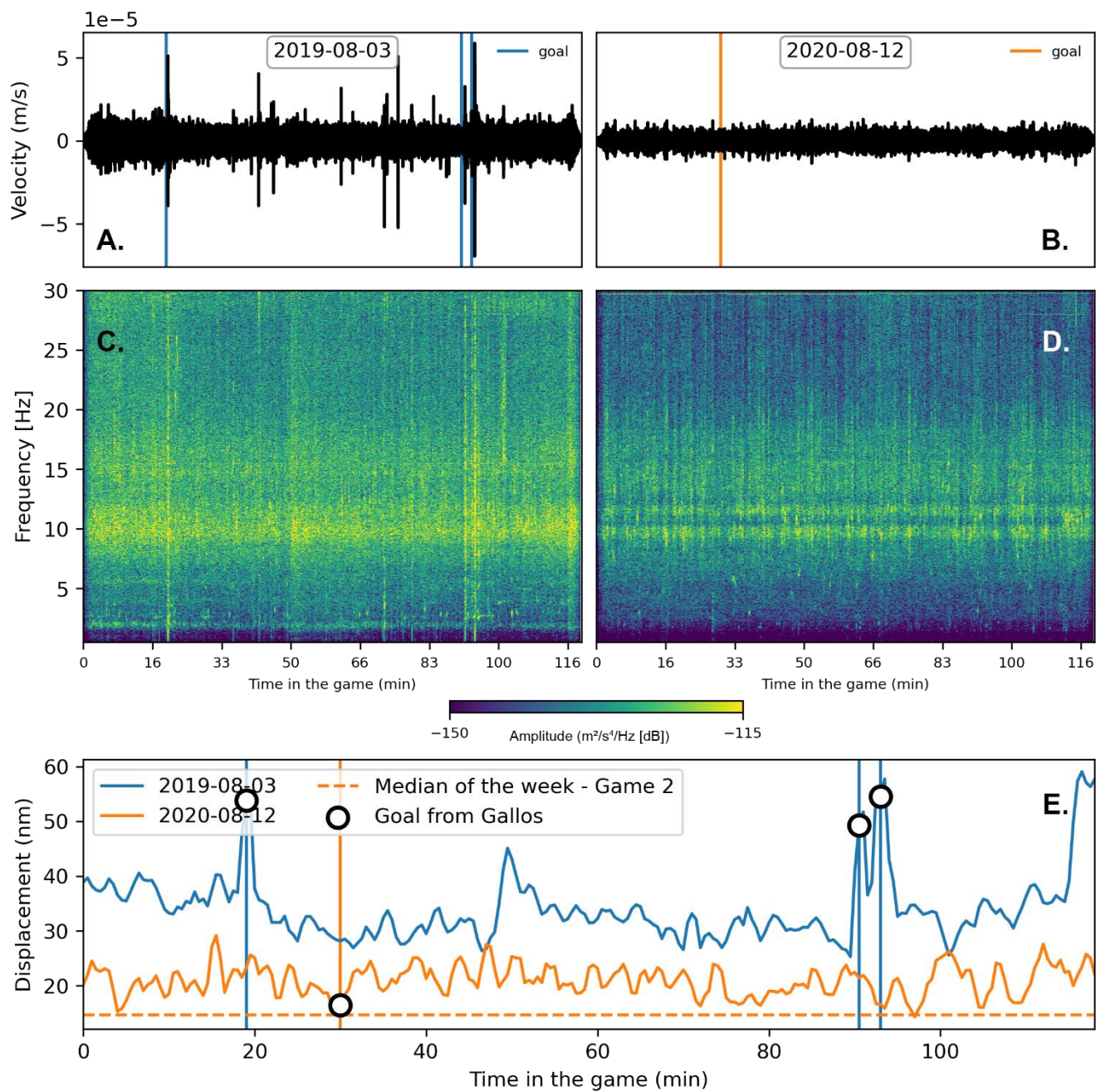
During the NN, the stoplight changed from red to orange with a subsequent relaxation of restrictions accompanied by a consistent progressive increase of the level of noise. As the infection risk increased, the stoplight was turned red again on 20 July for two weeks, during which the seismic RMS slightly decreased again. The stoplight was then turned orange again until 1 October, when it changed to yellow, by which the seismic RMS increased back to baseline levels.

From mid-August, station R2013 at UNAM campus displayed a significant increase in seismic RMS which held up on average 30% above the baseline. This sharp increase when some restrictions were still in place resulted from the relocation of the instrument from an office to a noisier site.

3.1 Sportive Sporting events

The station REBDD located in the Corregidora soccer arena also offers an interesting perspective on the contribution of the public attendance to the recorded seismic noise. Seismometers in soccer stadiums are regularly used in Mexico as an entertaining tool to teach basic scientific research methodologies and seismology to undergraduate students (e.g., Melgar & Pérez-Campos, 2011), which echoes similar initiatives at sporting events worldwide (e.g., Vidale 2011; Díaz et al. 2017). In Querétaro, all games had been canceled with the implementation of the early lockdown measures until mid-July, when authorities allowed games without public attendance. This situation makes for a good opportunity to compare observations during games played before and after the beginning of the confinement. In what follows, we look at data from two games played by the first division Gallos Blancos of Querétaro soccer club against the Cruz Azul soccer club of Mexico City (3 August 2019 and 12 August 2020, Figure 6) as well as one against the Águilas del América soccer club of Mexico City (9 February 2020 and 16 August 2020, Figure 7). The seismic RMS is calculated with the method described above but with a window reduced to 100 seconds.

Both games played against the Cruz Azul team were won by Gallos Blancos 3-0 and 1-0, respectively. During the first game, which occurred with an audience of 29,339 supporters, a clear signature can be identified at the moments Gallos Blancos scored goals with a significant increase (Figure 6) in noise. The half-time and especially the end of the game are also characterized by a relatively higher noise level than the rest of the game, which could potentially translate in the enthusiasm of the supporters at the final score. This development contrasts with the August 16th 2020 game played without an audience. The entire game remained at a relatively low level of noise very close to the median of the week for that time of the day (Figure 6). The only goal, at the 29th minute of the game, does not emerge from the background noise as only the players were present to celebrate it.



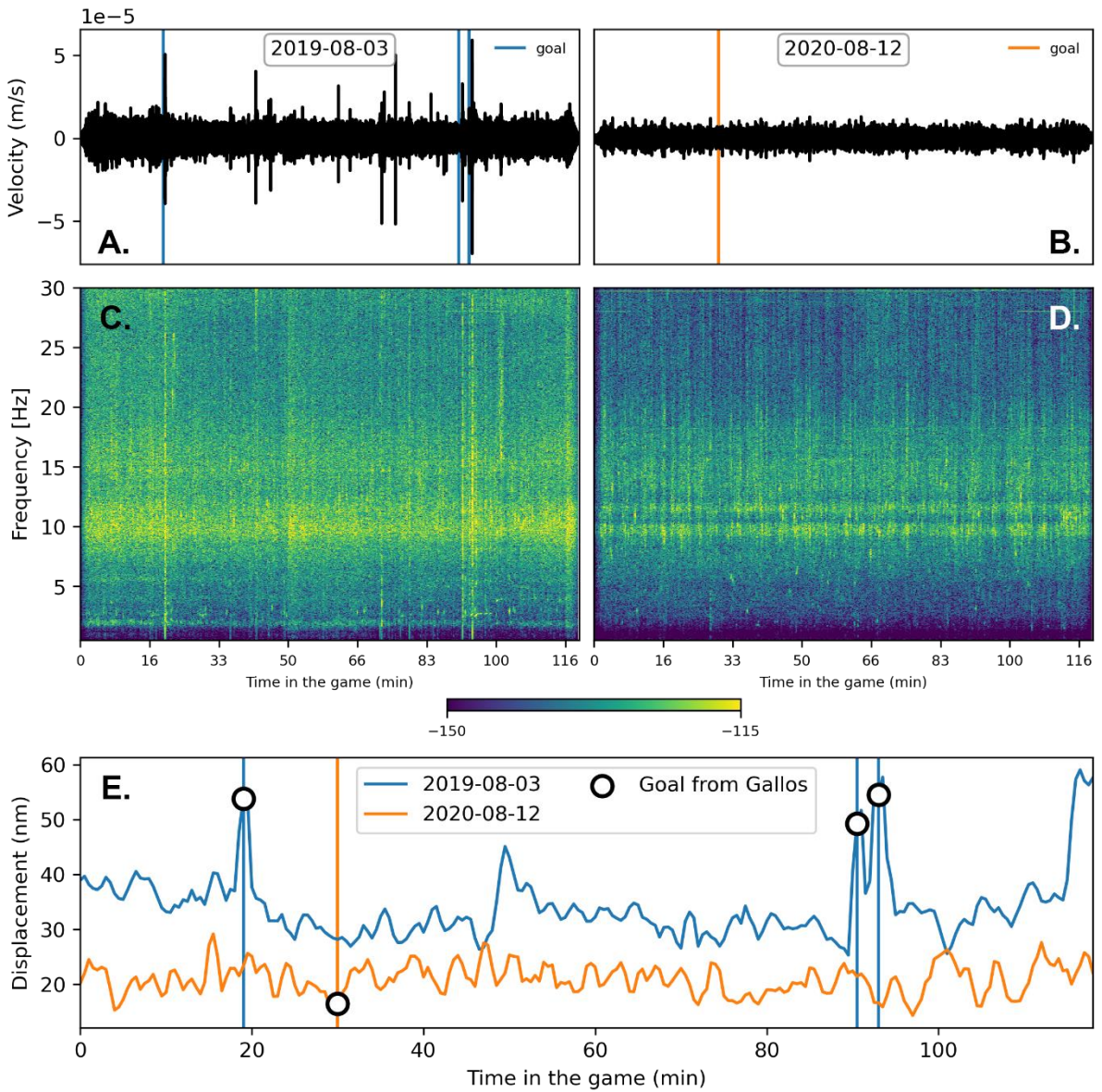
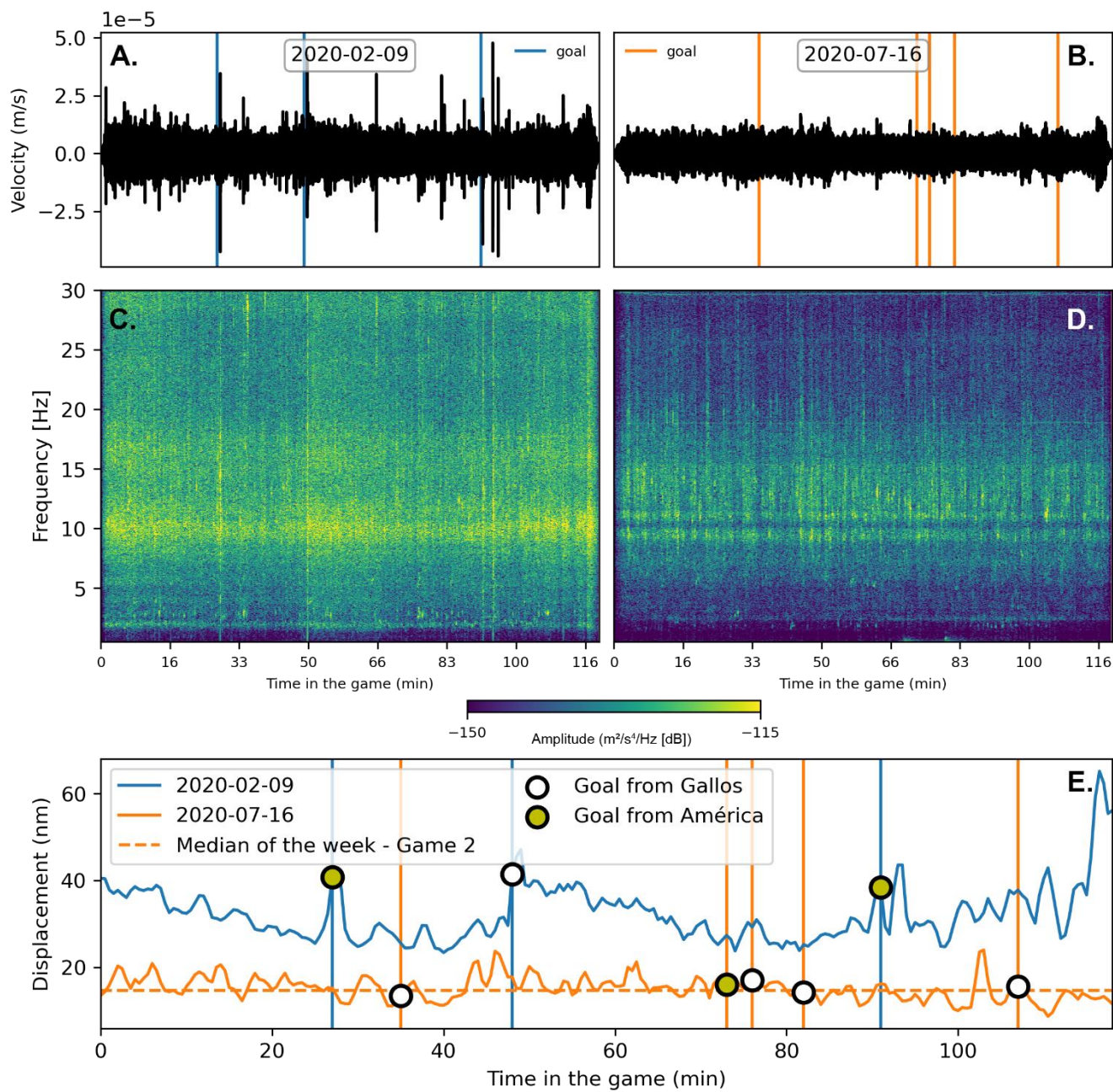


Figure 6. Seismic signal recorded by station REBDD during the football games between the Gallos Blancos of Querétaro and the Cruz Azul of Mexico City in the Corregidora Soccer Arena on 3 August 2019 and 12 August 2020, respectively. (A) and (B) are the waveforms, and (C) and (D) the spectrogram for each respective game. (E) compares the seismic RMS between the two games in the 4-14 frequency range.



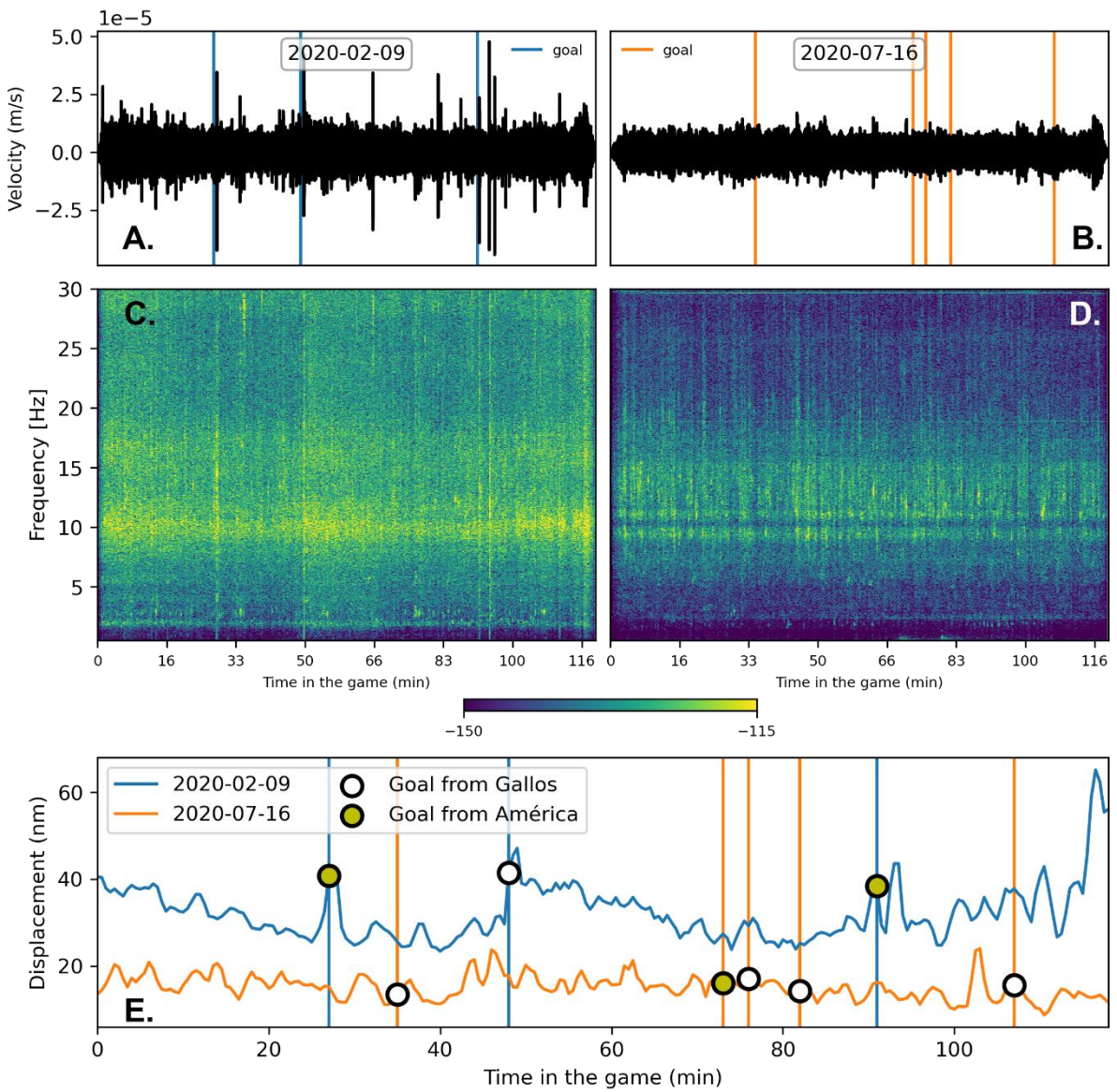


Figure 7. Seismic signal recorded by station REBDD during the football games between the Gallos Blancos of Querétaro and the Club América of Mexico City in the Corregidora Soccer Arena on 9 February and 16 July 2020, respectively. (A) and (B) are the waveforms, and (C) and (D) the spectrogram for each respective game. (E) compares the seismic RMS between the two games [in the 4-14 frequency range](#).

A similar pattern is observed during the matches against the Águilas del América team. The first game on February 9th 2020, with 34,050 supporters, was won 1-2 by América with noise levels consistently higher than the baseline for that time of the day on a Sunday and with clear spikes every time a goal was scored by either team. This pattern again shows the impact of the

supporters on the recorded seismic noise, which is further emphasized in contrast to the July 16th 2020 game where goals scored do not significantly emerge from the background signal.

3.2 Correlation with mobility

255 The different categories of community mobility were compared to the variations of noise levels to identify the one most affected by lockdown measures. The different correlation coefficient obtained for each category of community mobility sheds light on the impact of lockdown measures (Figure 5). The metrics of the community mobility are based on the data of Google users in the state of Querétaro, who use Location History, the majority of which are assumed to live in the QMZ. The median of network stations rather than individual stations was therefore compared to the community mobility to better correspond to
260 the sampled population.

The median seismic RMS has a high correlation with all the categories except the residential one but retail and recreation (0.~~64~~67), transit stations (0.~~58~~66), and workplace (0.~~57~~59) categories are the highest. With non-essential workers invited to shelter at home, this is an expected outcome reinforced by the strongly anticorrelated (-0.672) residential category (Figure 5C).
~~All correlation coefficients are highly significant with p-values smaller than $10E-15$. None of the stations are installed in an overwhelmingly residential area, mobility in that category is therefore not expected to be closely mapped by seismic noise, hence the anticorrelation.~~
265 The relationship between seismic RMS and the different categories of community mobility noticeably higher during the early phases of lockdown (Figure 5B). This could reflect the more complex mobility pattern people adopted during the new normality, as the authorities progressively encouraged the reopening of the economy with the help of sanitary measures.

270 Anthropogenic seismic noise recorded in cities is typically generated by various processes such as our cultural and ~~sportive~~ sporting events, individual and public commuter traffic and the production as well as transportation of different kinds of goods (e.g., Groos & Ritter, 2009). Traffic especially heavily influences the frequency range from ~ 1 Hz to more than 45 Hz with variation with respect to urban location due to the influence of subsurface conditions. As a result, geophysical sensing such as fiber-optic distributed acoustic sensing (DAS) has recently proved capable to provide remarkably resolved statistics about public infrastructure utilization across many large sectors of a city (Lindsey et al., 2020).
275

Surface waves generated by vehicles in stratified soil has been shown to be mainly restricted to 2–20 Hz the frequency band. The vehicle-induced ground vibrations are generated by the pitch, and axle hop modes of the vehicle coupling to the road. Although far-field vibration levels depend on vehicle speed, road unevenness, vehicle, and soil characteristics, vibration frequencies attributed to axle hop modes depend on vehicle distance and velocity (Lombaert et al., 2000; Lombaert &
280 Degrande, 2001).

The seismic noise recorded by stations all within 5 km of the main roads in the state, a busy urban environment, is relatively similar across all stations in our frequency band of interest and has a specific temporal pattern that suggest a ubiquitous source. This has been characterized as a traffic-dominated anthropogenic noise (e.g., Boese et al., 2015; Green et al., 2017), and

285 ~~indicates that the method likely provides~~ ~~is likely~~ a good proxy for the temporal variation of traffic volume. With a lot of people working from home or losing their jobs during the lockdown, our results could in large part indirectly show the decrease in commuter traffic.

4 Conclusions

290 Like in a lot of populated places around the world, the effect of lockdown measures was observed as a decrease of high-frequency seismic noise in the city of Querétaro. Our results specifically show the benefit of using a network of low-cost Raspberry Shake stations to investigate the temporal and spatial variation of the anthropogenic noise at a city-scale.

While the tracked variation of human-generated noise has a high similarity with community mobility report obtained from mobile technologies, it yields a finer resolution that could effectively single out localized zones of increased noise level caused by more activity, such as the industrial park Benito Juárez, or construction work, such as at the campus of the Universidad
295 Tecnológica de Querétaro.

The privacy concerns associated with mobile technology-based community mobility data require a low resolution to anonymize original user data. Along with a higher resolution, anthropogenic seismic noise has the advantage of being anonymized by definition and does not require the population to trustfully or unwillingly share their personal data.

300 While we observed the contribution to anthropogenic noise in the near-field of source, such as construction work and ~~sportive~~ sporting events, ~~at a very local scale, traffic appeared to dominate observation at the city scale~~ the observed correlation between seismic noise and mobility at the city scale is consistent with the traffic-dominated nature of anthropogenic seismic noise in urban areas. ~~While~~ Although observing variations of traffic volumes in the seismic signal is not monitoring the lockdown per se, it proves to be a reliable proxy for human activity, especially at the city-scale with such a network.

Acknowledgments

305 This work is supported by the grant CONACYT-299766 and CONCYTEQ. R.D.P. acknowledges support from the UNAM-DGAPA postdoctoral scholarship. We also thank the following institutions: CCU-UNAM, UTEQ, UPQ, CECEQ, Estadio Corregidora and Parque industrial Benito Juárez, for allowing us to install the equipment in their facilities.

Data availability

310 Data for stations R3F94, RB158 and R3F94 are openly accessible as part of the citizen scientist earthquake monitoring network (AM) through FDSN Web Services (<https://doi.org/10.7914/SN/AM>). The remaining data used in this study is available upon request to the corresponding author.

Author contributions

RDP, VHM and XPC. designed the study. All the Authors analysed the seismic data. RDP, VHM and XPC wrote the paper. All the authors interpreted the results and revised the article.

315 **Competing interests**

The authors declare that they have no conflict of interest.

References

- Aktay, A., Bavadekar, S., Cossoul, G., Davis, J., Desfontaines, D., Fabrikant, A., Gabrilovich, E., Gadepalli, K., Gipson, B.,
320 Guevara, M., Kamath, C., Kansal, M., Lange, A., Mandayam, C., Oplinger, A., Pluntke, C., Roessler, T.,
Schlosberg, A., Shekel, T., ... Wilson, R. J. (2020). Google COVID-19 Community Mobility Reports:
Anonymization Process Description (version 1.0). *ArXiv:2004.04145 [Cs]*. <http://arxiv.org/abs/2004.04145>
- Anthony, R. E., Ringler, A. T., Wilson, D. C., & Wolin, E. (2019). Do low-cost seismographs perform well enough for your
network? An overview of laboratory tests and field observations of the OSOP raspberry shake 4D. *Seismological*
325 *Research Letters*, 90(1), 219–228. <https://doi.org/10.1785/0220180251>
- Boese, C. M., Wotherspoon, L., Alvarez, M., & Malin, P. (2015). Analysis of anthropogenic and natural noise from
multilevel borehole seismometers in an urban environment, Auckland, New Zealand. *Bulletin of the Seismological*
Society of America, 105(1), 285–299. <https://doi.org/10.1785/0120130288>
- 330 Cannata, A., Cannavò, F., Di Grazia, G., Aliotta, M., Cassisi, C., De Plaen, R. S. M., Gresta, S., Lecocq, T., Montalto, P., &
Sciotto, M. (2020). Seismic evidences of the COVID-19 lockdown measures: Eastern Sicily case of study. *Solid*
Earth Discussions, 1–22. <https://doi.org/10.5194/se-2020-136>
- Dias, F. L., Assumpção, M., Peixoto, P. S., Bianchi, M. B., Collaço, B., & Calhau, J. (2020). Using Seismic Noise Levels to
Monitor Social Isolation: An Example From Rio de Janeiro, Brazil. *Geophysical Research Letters*, 47(16), 0–3.
335 <https://doi.org/10.1029/2020GL088748>
- Díaz, J., Ruiz, M., Sánchez-Pastor, P. S., & Romero, P. (2017). Urban Seismology: On the origin of earth vibrations within a
city. *Scientific Reports*, 7(1), 1–11. <https://doi.org/10.1038/s41598-017-15499-y>
- Díaz, J., Schimmel, M., Ruiz, M., & Carbonell, R. (2020). Seismometers Within Cities: A Tool to Connect Earth Sciences
340 and Society. *Frontiers in Earth Science*, 8(February), 1–7. <https://doi.org/10.3389/feart.2020.00009>
- González Alma Delia, B., Bringas Cristina, T., Dessens Luis Felipe, R., Ciad, A., & Hermosillo Sonora México, A. (2018).
Caracterización del mercado mexicano de teléfonos celulares inteligentes o smartphones. January.
[http://www.invumus.uson.mx/revistas/articulos/26-Borbon Gonzalez, Taddei Bringas y Romero Dessens 2018-](http://www.invumus.uson.mx/revistas/articulos/26-Borbon%20Gonzalez,%20Taddei%20Bringas%20y%20Romero%20Dessens%202018-1.pdf)
1.pdf
- 345 Google. (2020). *COVID-19 Community Mobility Report*. COVID-19 Community Mobility Report.
<https://www.google.com/covid19/mobility?hl=en>
- Green, D. N., Bastow, I. D., Dashwood, B., & Nippress, S. E. J. (2017). Characterizing broadband seismic noise in Central
London. *Seismological Research Letters*, 88(1), 113–124. <https://doi.org/10.1785/0220160128>
- Green, D. N., & Bowers, D. (2008). Seismic Raves: Tremor Observations from an Electronic Dance Music Festival.
350 *Seismological Research Letters*, 79(4), 546–553. <https://doi.org/10.1785/gssrl.79.4.546>

- Groos, J. C., & Ritter, J. R. R. (2009). Time domain classification and quantification of seismic noise in an urban environment. *Geophysical Journal International*, 179(2), 1213–1231. <https://doi.org/10.1111/j.1365-246X.2009.04343.x>
- INEGI. (2016). *Panorama sociodemográfico de Queretaro 2015* (p. 29) [Encuesta Intercensal 2015]. Instituto Nacional de Estadística y Geografía. <https://www.inegi.org.mx/programas/intercensal/2015/>
- Lecocq, T., Hicks, S. P., Van Noten, K., van Wijk, K., Koelemeijer, P., De Plaen, R. S. M., Massin, F., Hillers, G., Anthony, R. E., Apoloner, M.-T., Arroyo-Solórzano, M., Assink, J. D., Büyükapınar, P., Cannata, A., Cannavo, F., Carrasco, S., Caudron, C., Chaves, E. J., Cornwell, D. G., ... Xiao, H. (2020). Global quieting of high-frequency seismic noise due to COVID-19 pandemic lockdown measures. *Science*, 369(6509), 1338–1343. <https://doi.org/10.1126/science.abd2438>
- Lindsey, N. J., Yuan, S., Lellouch, A., Gualtieri, L., Lecocq, T., & Biondi, B. (2020). City -Scale Dark Fiber DAS Measurements of Infrastructure Use During the COVID-19 Pandemic. *Geophysical Research Letters*, 47(16), e2020GL089931. <https://doi.org/10.1029/2020GL089931>
- Lombaert, G., & Degrande, G. (2001). Experimental validation of a numerical prediction model for free field traffic induced vibrations by in situ experiments. *Soil Dynamics and Earthquake Engineering*, 21(6), 485–497. [https://doi.org/10.1016/S0267-7261\(01\)00017-3](https://doi.org/10.1016/S0267-7261(01)00017-3)
- Lombaert, G., Degrande, G., & Clouteau, D. (2000). Numerical modelling of free field traffic-induced vibrations. *Soil Dynamics and Earthquake Engineering*, 19(7), 473–488. [https://doi.org/10.1016/S0267-7261\(00\)00024-5](https://doi.org/10.1016/S0267-7261(00)00024-5)
- Martínez-Domínguez, M., & Mora-Rivera, J. (2020). Internet adoption and usage patterns in rural Mexico. *Technology in Society*, 60(June 2019), 101226. <https://doi.org/10.1016/j.techsoc.2019.101226>
- Melgar, D., & Pérez-Campos, X. (2011). How a Soccer Stadium Helps with an Education in Science and Seismology. *Seismological Research Letters*, 82(1), 115–119. <https://doi.org/10.1785/gssrl.82.1.115>
- OECD Economic Surveys: Mexico 2019. (2019). OECD ILibrary. https://www.oecd-ilibrary.org/economics/oecd-economic-surveys-mexico-2019_a536d00e-en
- OECD, & International Labour Organization. (2019). *Tackling Vulnerability in the Informal Economy*. OECD. <https://doi.org/10.1787/939b7bcd-en>
- Poli, P., Boaga, J., Molinari, I., Cascone, V., & Boschi, L. (2020). The 2020 coronavirus lockdown and seismic monitoring of anthropic activities in Northern Italy. *Scientific Reports*, 10(1), 9404. <https://doi.org/10.1038/s41598-020-66368-0>
- Riahi, N., & Gerstoft, P. (2015). The seismic traffic footprint: Tracking trains, aircraft, and cars seismically. *Geophysical Research Letters*, 42(8), 2674–2681. <https://doi.org/10.1002/2015GL063558>
- Secretaría de Salud. (2020a, March 31). *Consejo de Salubridad General declara emergencia sanitaria nacional a epidemia por coronavirus COVID-19*. gob.mx. <http://www.gob.mx/salud/prensa/consejo-de-salubridad-general-declara-emergencia-sanitaria-nacional-a-epidemia-por-coronavirus-covid-19-239301>

- 385 Secretaría de Salud. (2020b, May 20). *Secretarías de Salud y de Turismo presentan Lineamiento Nacional para la*
Reapertura del Sector Turístico. gob.mx. [http://www.gob.mx/salud/prensa/secretarias-de-salud-y-de-turismo-](http://www.gob.mx/salud/prensa/secretarias-de-salud-y-de-turismo-presentan-lineamiento-nacional-para-la-reapertura-del-sector-turistico-243436)
[presentan-lineamiento-nacional-para-la-reapertura-del-sector-turistico-243436](http://www.gob.mx/salud/prensa/secretarias-de-salud-y-de-turismo-presentan-lineamiento-nacional-para-la-reapertura-del-sector-turistico-243436)
- [Vidale, J. E. \(2011\). Seattle “12th Man Earthquake” Goes Viral. *Seismological Research Letters*, 82\(3\), 449–450. https://doi.org/10.1785/gssrl.82.3.449](https://doi.org/10.1785/gssrl.82.3.449)
- 390 Welch, P. (1967). The use of fast Fourier transform for the estimation of power spectra: A method based on time averaging
over short, modified periodograms. *IEEE Transactions on Audio and Electroacoustics*, 15(2), 70–73.
<https://doi.org/10.1109/TAU.1967.1161901>
- World Health Organisation. (2020, March 11). *Coronavirus Disease (COVID-19) Situation Reports*.
<https://www.who.int/emergencies/diseases/novel-coronavirus-2019/situation-reports>
- 395 Xiao, H., Eilon, Z. C., Ji, C., & Tanimoto, T. (2020). COVID-19 Societal Response Captured by Seismic Noise in China and
Italy. *Seismological Research Letters*, 91(5), 2757–2768. <https://doi.org/10.1785/0220200147>