

# Present-day geodynamics of the Western Alps: new insights from earthquake mechanisms

Marguerite Mathey<sup>1</sup>, Christian Sue<sup>1,2</sup>, Colin Pagani<sup>3</sup>, Stéphane Baize<sup>4</sup>, Andrea Walpersdorf<sup>1</sup>, Thomas Bodin<sup>3</sup>, Laurent Husson<sup>1</sup>, Estelle Hannouz<sup>1</sup>, Bertrand Potin<sup>5</sup>

<sup>1</sup> University Grenoble Alpes, University Savoie Mont Blanc, CNRS, IRD, IFSTTAR, ISTerre, Grenoble, 38000, France

<sup>2</sup> Chrono-Environnement Besançon, OSU THETA, University Bourgogne-Franche-Comté, Besançon, 25000, France

<sup>3</sup> Univ Lyon, Université Lyon 1, Ens de Lyon, CNRS, Lyon, 69000, France

<sup>4</sup> IRSN,PSE-ENV/SCAN/BERSSIN, BP 17, Fontenay-aux-roses, F-92262, France

<sup>5</sup> Departamento de Geofísica, Universidad de Chile, Blanco Encalada 2002, Santiago, 8320000, Chile

Correspondence: Marguerite Mathey ([marguerite.mathey@univ-grenoble-alpes.fr](mailto:marguerite.mathey@univ-grenoble-alpes.fr))

## Abstract

Due to the low to moderate seismicity of the European Western Alps, few focal mechanisms are available to this day in this region, and the corresponding current seismic stress and strain fields remain partly elusive. The development of dense seismic networks in the past decades now provides a substantial amount of seismic records ~~down to low magnitudes in the 0-5~~ magnitude range. The corresponding data, while challenging to handle due to their amount and relative noise, represent a new opportunity to increase the spatial resolution of seismic deformation fields. The aim of this paper is to quantitatively assess the current seismic stress and strain fields within the Western Alps, from a probabilistic standpoint, using new seismotectonic data. The dataset comprises more than 30,000 earthquakes recorded by dense seismic networks ~~since 1989~~ between 1989 and 2013 and more than 2200 focal mechanisms newly computed in a consistent manner. The global distribution of P and T axes plunges confirms a majority of transcurrent focal mechanisms in the ~~overall-entire western~~ overall-entire western Alpine realm, combined with pure extension localized in the core of the belt. We inverted this new set

of focal mechanisms through several strategies, including a seismotectonic zoning scheme and  
30 grid procedure, revealing extensional axes oriented obliquely to the strike of the belt. The  
Bayesian inversion of this new dataset of focal mechanisms provides a probabilistic continuous  
map of the style of seismic deformation in the Western Alps. Extension is found clustered,  
instead of continuous along the backbone of the belt. ~~Compression is robustly retrieved only in  
the Po plain, which locates at the limit~~Robust indications for compression are only observed at  
35 the boundary between the Adriatic and Eurasian plates. Short-wavelength spatial variations of  
the seismic deformation are consistent with surface horizontal GNSS measurements as well as  
with deep lithospheric structures, thereby providing new elements to understand the current 3D  
dynamics of the belt. We interpret the ongoing seismotectonic and kinematic regimes as being  
controlled by the joint effects of far-field forces –imposed by the counterclockwise rotation of  
40 Adria with respect to Europe- and of buoyancy forces in the core of the belt, which together  
explain the short-wavelength patches of extension and of marginal compression overprinted  
on an overall transcurrent tectonic regime.

## 1 Introduction

45 The European Alps are characterized by a complex orogenic history. The Alpine belt results from the collision between the African and European plates during the Cenozoic (e.g. Coward and Dietrich (1989); Handy et al. (2010)). Tertiary continental collision followed the late Cretaceous to Eocene closure of the Ligurian Tethys ocean (e.g. Stampfli et al., 1998), leading to the indentation of the European plate by Adria. The anticlockwise rotation of the Adriatic  
50 plate with respect to the European plate prevails in the tectonic history of the Western Alps (e.g. D'Agostino et al., 2008; Nocquet and Calais, 2004; Serpelloni et al., 2007). More precisely, multiple collision phases led to nappe stacking as well as folds and thrusts, from the inner zones to the outer front of the belt. The Frontal Penninic Thrust (FPT) is the main compressional structure of Oligocene age along the Western Alpine arc (Tricart, 1984).  
55 Concurrently to the Miocene progradation of the collision front towards the external zones, the inner part of the belt was affected by orogen-parallel extension, crosscutting earlier compressional structures and resulting in intertwined networks of normal and strike-slip faults (e.g. Champagnac et al. (2006); Sue and Tricart (2003); Bertrand and Sue (2017)). A late phase of orogen-perpendicular extension developed in the core of the Western Alps during the Plio-Pleistocene (Bilau et al., 2020; Sue et al., 2007), leading to the extensional reactivation of the  
60 FPT (Sue and Tricart, 1999). This continued tectonic regime is currently revealed by the moderate seismicity of the Western Alps, which is distributed along two main seismic arcs, namely the Briançonnais seismic arc running along the FPT, and the Piémontais seismic arc running along the western side of the Ivrea Body (Sue et al., 2002; Figure 1). Congruent with  
65 the late brittle extension, ongoing seismicity shows normal faulting combined with dextral longitudinal strike-slip (Sue et al., 1999, 2007; Delacou et al., 2004).

From the end of the 90's onward, seismotectonic studies brought increasing constraints on the current strain and stress states of the Western Alpine realm as a whole (e.g. Maurer et al 1997; Kastrup et al., 2004; Eva et al., 2020). The progressive development of dense permanent and  
70 temporary seismic networks in the Western Alps (e.g. Sismalp (Thouvenot et al., 1990, 2013), CIfALPS (Zhao et al., 2013)) improved the catalogues by decreasing both the magnitude of completeness and the minimum magnitude from which focal mechanisms could be computed. These updated catalogues offer the opportunity to reappraise the disputed current dynamics of the Western Alps (e.g. Nocquet et al., 2016; Sternai et al., 2019; Champagnac et al., 2012;  
75 Mazzotti et al., 2020).

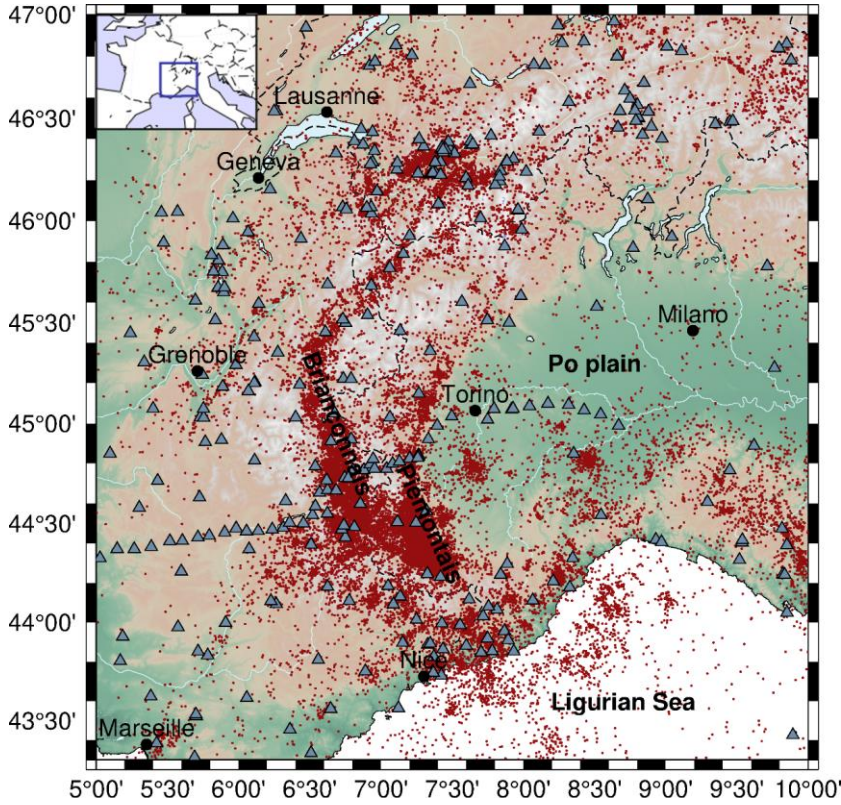


Figure 1. Map of the seismicity (red dots) encompassing the western Alps, compiled in Potin (2016) from national and regional networks seismic stations (triangles). The two major seismic arcs (Briançonnais and Piémontais arcs) ~~stand out clearly from~~ can be clearly identified in the seismicity.

In this paper, we apply an integrated seismotectonic approach taking advantage of a comprehensive seismic dataset (Potin, 2016) that compiles the seismicity recorded from 1989 to 2013 by five national and regional networks and includes more than 30,000 events with local magnitudes (MI) in the 0 to 5 range. Given the exceptional amount of data available in this catalogue we unveil the highest resolution stress and strain fields to date based on the computation of more than 2200 focal mechanisms, and we retrieve the robust deformation signals at the regional scale. This is achieved thanks to a Bayesian inversion for the deformation style, combined to a stress-oriented inversion of the focal mechanisms. Principal stress orientations, combined with the regionalization of deformation modes, are of primary

90 importance to understand the seismogenic processes within the belt and to seismic hazard  
analyses.

## 2 Data and methods

### 2.1 Seismic database and earthquake localizations

Our large dataset is a compilation of P and S wave travel time arrivals recorded by five local or  
95 national networks operated from 1989 to 2013 (Potin, 2016, Figure 1). (i) The Sismalp (OG)  
network from Grenoble Observatory (Thouvenot et al., 1990, 2013; Thouvenot and Fréchet,  
2006) consisted of up to 44 permanent and 10 temporary stations, from 1989 and 2013, and  
specifically targeted the weak seismicity of the Western Alps. (ii) The French RéNaSS (*Réseau*  
*National de Surveillance Sismique*) and LDG (*Laboratoire de Détection Géophysique*) (FR)  
100 networks (RESIF, <https://doi.org/10.15778/RESIF.FR>) cover the whole French territory, and  
include 36 stations in the Western Alps. (iii) The Italian RSNI (GU) network (Regional Seismic  
Network of North Western Italy, <https://doi.org/10.7914/SN/GU>, Scafidi et al., 2015)  
comprises 40 stations in the Western Alps and the Po plain and collects data since the 1960s  
onward. (iv) The Swiss SED (CH) network (<https://doi.org/10.12686/sed/networks/ch>, Cauzzi  
105 and Clinton, 2013) maintains an increasing number of stations in Switzerland since the 1970s  
onward with more than two hundred stations as of today (Diehl et al., 2018). (v) The CIFALPS  
(YP) network (<https://doi.org/10.15778/RESIF.YP2012>, Zhao et al., 2013; 2016a) was installed  
between 2012 and 2013 along a profile across the SW Alps. Potin (2016) standardized and  
homogenized the seismic data collected from these different networks: duplicate events were  
110 removed, and arrival time uncertainties were harmonized. Potential picking errors were  
identified and cleared out. The remaining dataset includes 36,010 events, for which at least  
seven phases were read by at least four seismic stations. 791,754 P- and S-waves arrival times  
were retained, recorded at 375 stations. Potin (2016) combined a 3D-velocity inversion and  
earthquake re-localizations; take-off angles of seismic rays were estimated with an uncertainty  
115 of the order of a few degrees for well constrained hypocenters, thus providing an enhanced  
localization of the events with a precision of a few kilometers both laterally and vertically.

## 2.2 Focal mechanism computation

From the aforementioned large dataset, we computed focal mechanisms with the code HASH (Hardebeck and Shearer, 2002). The computation makes use only of P-wave first motion polarities. Thanks to the high density of stations provided by the combination of six networks, we were able to apply strict computation criteria. From the 36,010 events of the above described dataset, we retained those with at least 10 P-wave polarities and at least one S-wave. The maximum allowed azimuthal gap between polarities was set to  $90^\circ$  and the maximum azimuthal gap of incidence angles to  $60^\circ$ . The maximum allowed distance to the seismic station was set to 600 km since all the stations used are within this range and covered by the same velocity model from Potin (2016). The preferred solution corresponds to the average solution of all acceptable solutions. A “preferred” focal mechanism (Hardebeck and Shearer, 2002) ~~was computed for each of the 2,215 events meeting these criteria.~~ The HASH code yields a quality flag from A to F for each computed focal mechanism (A, best constrained), which takes into account several parameters such as the number of polarities used, spatial distribution of stations, and uncertainties on polarities. ~~The local magnitude (MI) is based on the maximum amplitude of the shear wave.~~ The quality flags distribution of the computed focal mechanisms is available in Figure S1. ~~Over~~ From the 2,215 events for which a focal mechanism has been computed, 58 have a  $MI < 1$ ; 1,200 have a MI ranging from 1 to 2; 769 have a MI ranging from 2 to 3; 102 have a MI ranging from 3 to 4, and 19 have a  $MI > 4$  (Figure 2a). 15 of them are A quality events with MI ranging from 1.6 to 4.6; 52 are B quality events with MI from 1.3 to 4.9; 72 are C quality events with MI from 0.9 to 4.8; all other mechanisms are D quality events with MI ranging from 0.2 to 4.5. According to Hardebeck and Shearer (2002), A quality events have an associated fault strike uncertainty between  $0^\circ$  and  $25^\circ$ , B events between  $25^\circ$  and  $35^\circ$ , C events between  $35^\circ$  and  $45^\circ$ , and D events between  $45^\circ$  and  $55^\circ$ .

While low magnitude seismic events account for less seismic energy release compared to larger ones, they will nonetheless be used both in an approach in which all focal mechanisms are used regardless of their magnitude (stress inversions, section 2.3), and in approaches in which focal mechanisms are weighted depending on their magnitude (seismic moment summation, section 2.3) and overall quality (Bayesian inversion, section 2.4), respectively.

To further analyze the regional distribution of the focal mechanisms, we classified them according to the plunges of their pressure (P), tension (T) and null (B) axes (following the method of Frohlich (1992)). One can use ternary diagrams to graphically represent intermediate

faulting styles between pure strike-slip, pure normal or pure reverse motion. Each pole of the diagram represents one of the three pure styles of deformation (pure strike-slip, pure normal or pure reverse motion). For each focal mechanism, Kaverina diagrams (e.g., Alvarez-Gómez, 2019) allow to represent the styles of deformation including the case of intermediate modes such as transpression or transtension. Frohlich's classification with Kaverina diagrams allows to represent a focal mechanism in the ternary diagram by only two coordinates, the B and T axes plunges, P axis plunge being retrieved by the product of the 2 first ones (e.g. if both T plunge and B plunge = 0 °, then P plunge = 90 °). The representation of the style of deformation through the Frohlich classification thus allows one to project a focal mechanism into a 2D parameter space, and to account for intermediate styles of deformation, while information on the ~~plane orientation~~ focal plane solution is lost. The Kaverina diagram for the complete catalogue is presented on Figure 2b, and the corresponding map on Figure 2c. Kaverina diagrams per Ml ranges are available in Figure S2.

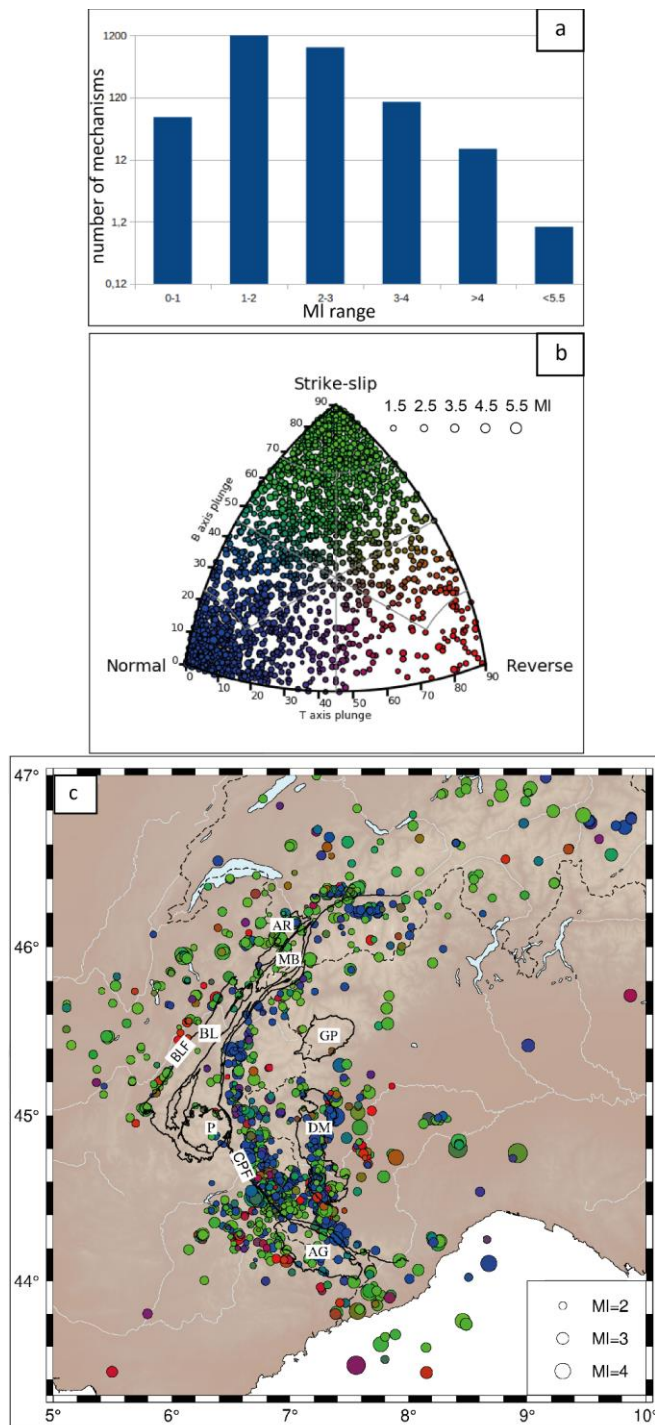




Figure 2. Set of the 2215 focal mechanisms computed in this study. a) Histogram of magnitude distribution (local magnitude, MI) for the computed focal mechanisms. b) Kaverina diagram displaying the style of deformation of the mechanisms according to their T axis (tension axis) and B axis (null axis) plunges. Normal, reverse and strike-slip deformation style corresponding to vertical P, T and B axes is indicated by circles in blue, red and green color, respectively. c) Localization of the focal mechanisms color-coded according to their classification in the Kaverina diagram in b). Note the different scale for events size between b) and c). Black lines outline the crystalline massifs of the area. External crystalline massifs (Aiguilles Rouges, AR; Mont-Blanc, MB; Belledonne, BL; Pelvoux, P; Argentera, AG) are separated from the internal crystalline massifs (Gran Paradiso, GP; Dora Maira, DM) by the Crustal Penninic Front (CPF). The Belledonne external massif is delineated by the Belledonne Fault (BLF) along its western flank.

### 2.3 Strain quantification and stress inversions

Strain rates are computed by averaging moment tensors (*i.e.*, symmetrical 9 components 2nd order tensor, plus seismic moment amplitude), for which the 9 components directly depend on strike, dip and rake parameters of the focal mechanisms. The seismic moment for each focal mechanism is by definition related to moment magnitude  $M_w$  (Hanks and Kanamori, 1979).

The local magnitude (MI) of the catalogue is based on the maximum amplitude among all three components of the signal. Our Sismalp catalogue includes a local magnitude scale (MI) for which a double conversion toward  $M_w$  has been proposed by Cara et al. (2015), through another national-scale local magnitude (MI LDG). However, a careful analysis of this double conversion (Laurendeau et al., 2019) shows that this relationship is misleading for MI Sismalp >2.5: above this value, a linear relationship could be derived from the available dataset; below this value, a polynomial equation is a better approximation. Finally,  $M_w=MI$  is a reasonable hypothesis, however under-estimating moment magnitude on the complete range of values. In order to retrieve an annual strain rate, the sum of the individual moment tensors is divided by a volume and a time span, according to Kostrov (1974). This method thus requires defining homogeneous volumes in terms of deformation style, prior to summing compatible focal mechanisms in each volume. We defined 11 volumes within our region of interest, based on structural criteria, taking into account both the arcuate structure of the belt, as well as its geological structures, or based on the focal mechanism distribution and density of earthquakes.

The 11 seismotectonic zones are named according to their structural environment: the VSS and VSN zones in the Southern and Northern Valais; BRN, BRS, BRS2 from North to South along

Mis en forme : Normal, Espace Avant : Automatique, Interligne : simple

the Briançonnais seismic arc; PIE along the Piémontais seismic arc; PPO, SMT, NMT, and VAR for the areas at the periphery of the belt: Po plain to the East, Southern Mercantour to the south, and Northern Mercantour and Var to the Southwest, respectively; and finally DPH in the external Dauphinois zone (map view on Figure 3).

In a second analysis, focal mechanisms were inverted to retrieve the principal stress directions. Different inversion methodologies exist, all based on the same assumption of a locally uniform stress regime in the crust producing a slip, which occurs in a direction parallel to the plane of resolved shear stress (Hardebeck and Hauksson, 2001; Lund and Townend, 2007). In the stress inversion strategy, all mechanisms are equally weighted, regardless of their magnitude. In order to strengthen our analysis, we compare the classic FMSI (Focal Mechanism Stress Inversion, Gephart, 1990) method based on a grid search algorithm with the SI (StressInverse, Vavryčuk, 2014) method based on a linear least-square inversion. These methods allow retrieving a partial stress tensor, since orientations of the three principle stresses can be obtained, as well as the shape ratio of the stress tensor, but not their absolute amplitude. The retrieved information is constitutive of the deviatoric stress tensor (D'Amico, 2018). In a first step, these two procedures were implemented on the same seismotectonic zones that were defined for strain rate quantification, in order to assess the robustness of the inversion. In a second step, we inverted the mechanisms on a regular grid rather than on pre-defined seismotectonic zones, which enables us to increase the spatial resolution of the derived stress field, at the cost of a reduced level of constraint since less data are used to derive each tensor. We used the MSATSI (Matlab Spatial And Temporal Stress Inversion, Martínez-Garzón et al., 2014) software, ~~which is based on the SI algorithm (Vavryčuk, 2014)~~ to perform an inversion for each cell encompassing at least 10 focal mechanisms. While MSATSI allows the user to modulate the damping factor describing the attenuation of the weight of neighboring cells in a given cell inversion, we choose to run the inversion without damping in order to identify any spatial heterogeneity in the stress field.

#### 2.4 Bayesian interpolation of focal mechanisms

We choose to interpolate the style of deformation, in order to construct a continuous map of the regional trends prevailing among the locally varying mechanisms. As shown in Figure 2, our dataset consists in an ensemble of P and T axes plunge angles given at each event location. In order to better investigate the spatial variations of this dataset, we implemented a 2D Bayesian regression method (after Bodin et al., 2012) to reconstruct a continuous surface of P and T

plunge angles. The procedure is based on a transdimensional regression, which can be used over n-dimensions datasets that are evenly distributed, and of variable uncertainties. The reconstructed surface is parameterized with a mesh that self-adapts to the level of information in the data. The solution is a full probability distribution for each parameter at each geographical location, which is useful to estimate uncertainties. This method was first used to reconstruct the Moho topography beneath Australia from a discrete set of local observations (Bodin et al., 2012). Choblet et al. (2014) used it to reconstruct probabilistic maps of coastal relative sea level variation from tide gauges records. The approach was also used by Husson et al. (2018) to reconstruct maps of vertical displacement rates measured at GPS stations, and by Hawkins et al. (2019a;b) to produce probabilistic maps of sea level rise by combining GPS, satellite altimetry and tide gauge measurements.

In this work, the transdimensional regression algorithm applied to focal mechanisms outputs probability distributions for P and T plunges values at each geographical location. The method accounts for the heterogeneous data density thanks to a self-adapting parameterization based on Delaunay triangles. It also accounts for variable uncertainties in the data and thus allows deciphering which signal is robust at the regional scale despite the data heterogeneity. Moreover, a hierarchical Bayesian approach is used and data uncertainties are re-scaled by a global adaptive factor depending on the level of data fit (Malinverno et al., 2004). This factor enables us to assess whether formal uncertainties on fault planes and thus on P and T axes are over- or underestimated. In our case, we took into account the fault plane uncertainty as input error on our focal mechanisms. We were able to assess through the Bayesian inversions that these formal errors are overestimated by a factor of  $\sim 0.6$ .

### 3 Results

#### 3.1 Focal mechanism distribution

To get a general overview of the 2200 focal mechanisms in terms of mode of deformation, we plotted them all together on a Kaverina diagram, *i.e.* according to their B and T axes plunges. The corresponding plot (Figure 2b) shows a majority of strike-slip mechanisms ( $\sim 1200$ ; 54.5 %), a large number of extensional ones ( $\sim 800$ ; 36.5 %), and a minority of reverse ones ( $\sim 200$ ; 9%), over the Western Alps as a whole. The localization of the events is shown on the map in Figure 2c, with respect to the main geological features covering the area. At a first glance, a strike-slip regime is distributed all over the belt, while extension is mainly located in the inner

part of the belt, *i.e.* along the Briançonnais and Piémontais arcs, confirming previous studies (Bauve et al., 2014; Delacou et al., 2004; Sue et al., 2002). Compression is scattered, and mostly expressed in the Po plain and in the S-W external part of the belt. ~~In terms of tectonic structures, the Belledonne fault (BLF) is well imaged by the focal mechanisms aligned over ~100 km along the external flank of the Belledonne crystalline massif. This active structure is dextral (e.g. Martinod et al. (1996) Billant et al. (2015)) and accounts for a large part of the seismicity released in this area during the instrumental period (Thouvenot et al., 2003). At a larger scale, a majority of the events are indeed located within the Briançonnais or Piémontais seismic arcs, which are characterized by complex parallel fault networks. Within these arcs, some surface fault traces are mapped from field works and could be associated with focal mechanisms at the local scale (for instance the High Durance and East Briançonnais Faults (Mathey et al., 2020; Sue and Tricart, 2003)). However, due to the large spatial scale of the present study, we did not perform any detailed analysis of focal mechanisms distribution with regard to individual faults.~~

In a second step, we plotted Frohlich classes on Kaverina diagrams for each of the 11 predefined seismotectonic zones (Figure 3). These plots confirm that the 11 zones display roughly consistent deformation modes; the homogeneity of the deformation mode in each zone being a prerequisite to strain estimates. Importantly, strike-slip mode prevails everywhere, either as almost pure transcurrent ~~zone in the Dauphinois and northern Valais (DPH, VSN)~~, or in association with extension ~~along the Briançonnais and Piémontais seismic arcs (BRS, BRS2, BRN, PIE, SMT). The reverse fault end member of the diagram is prevailing in the Po plain (PPO) zone only, but also appears noticeably in the Piémontais and Var zones (PIE and VAR).~~

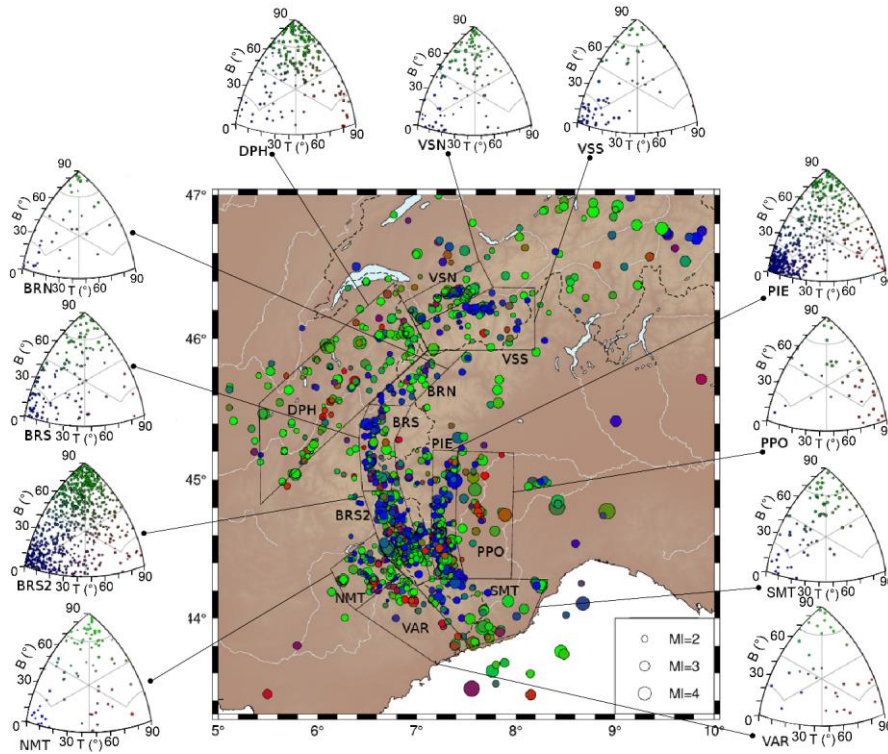


Figure 3. Seismotectonic zonation of the study area yielding 11 zones based on structural criteria, style of seismic deformation and its density. VSS: Valais South; VSN: Valais North; BRN: Briançon North; BRS: Briançon South; BRS2: Briançon South 2; PIE: Piemontais seismic arc; PPO: Po plain; VAR: Var; NMT: Northern Mercantour; SMT: Southern Mercantour; DPH: Dauphinois zone. Kaverina diagrams are shown for each seismotectonic zone, highlighting their homogeneous style of deformation, associating either normal and strike-slip events or reverse and strike-slip events.

### 3.2 Up-to-date strain and stress fields

The strain rate tensors computed in each of the 11 seismotectonic zones with Kostrov's (1974) method are presented as surface projections in Figure 4 and the related parameters (rate, azimuth and dip) are listed in Table 1. The largest strain tensor of the belt is located in the southern Briançonnais area (BRS2), where the extension axis reaches 0.3 nanostrain/yr trending WNW-ESE, and the compressive one 0.27 nanostrain/yr trending NNE-SSW. The PIE and DPH zones also present noticeable strain tensors. For PIE, extension is evaluated to 0.09

nanostrain/yr oriented N-S (and compression to 0.1 nanostrain/yr), and for DPH, extension and shortening of similar magnitude (0.05 nanostrain/yr each) are oriented NNE-SSW and WNW-ESE respectively. The deformation style of the strain tensors is generally strike-slip (both extension and compression horizontal), except for Piémontais (PIE) and southern Mercantour (SMT) areas, which show vertical compression axes and negligible compression rates respectively. However, in the Kostrov methodology, the style of deformation and its orientation are dominated by the larger events in each sub-area, as they bring most of the energy released. The short time span of the observations (245 years) prevents from properly-thoroughly investigating the time/energy relation per zone seismic energy release spatial and temporal variations. Therefore, including historical events that occurred in the Western Alps in the summation could modify the strain rate distribution in the belt.

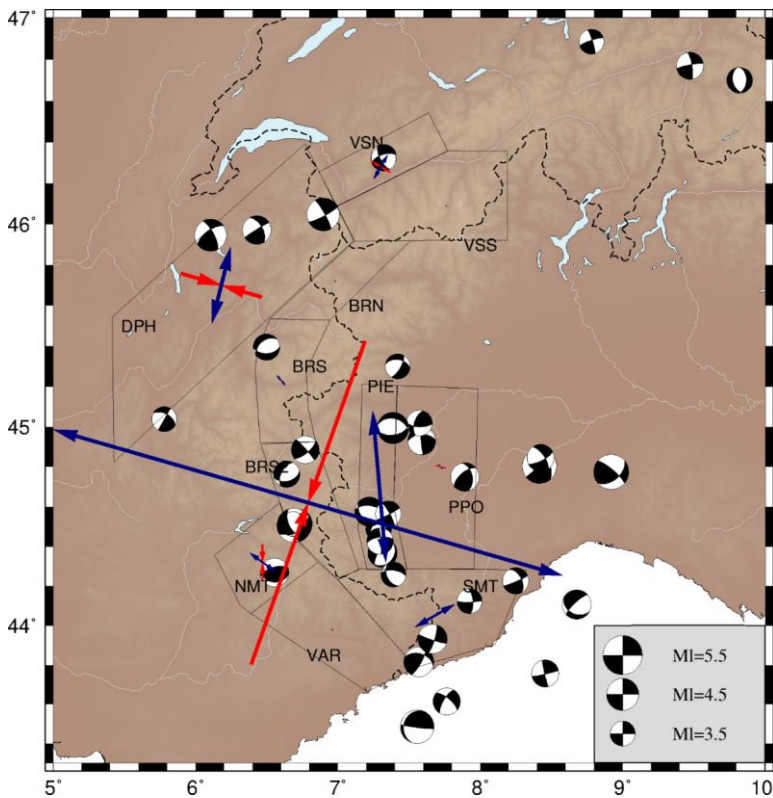


Figure 4. Seismic strain rates computed according to Kostrov's (1974) method in each of the 11 subareas, based on the 25 years of seismicity records from Potin (2016). Blue and red arrows show respectively the extensive and compressive components of the strain rate projected at the

surface ( $\dot{\epsilon} \cdot \cos(\delta)$ ), where  $\dot{\epsilon}$  is the given eigenvalue and  $\delta$  is the dip (see values in Table 1). Black arrows represent the scale of the strain rate. Values used for projection are reported in Table 1. Focal mechanisms with  $M_l \geq 3.5$  are represented in the background since strain rates mostly depend on higher moment tensors.

	Kostrov strain rates	
	$\dot{\epsilon}_1$ (yr <sup>-1</sup> ) ; $\theta$ (°) ; $\delta$ (°)	$\dot{\epsilon}_3$ (yr <sup>-1</sup> ) ; $\theta$ (°) ; $\delta$ (°)
BRN	-9.8e <sup>-13</sup> ; -124 ; 7	1.2e <sup>-12</sup> ; -33 ; 7
BRS	-8.4e <sup>-12</sup> ; -69 ; 65	7.9e <sup>-12</sup> ; -41 ; 9
BRS2	-2.75e <sup>-10</sup> ; 19 ; 42	3.1e <sup>-10</sup> ; 107 ; 3
DPH	-4.9e <sup>-11</sup> ; -74 ; 6	4.7e <sup>-11</sup> ; 14 ; 13
NMT	-2.1e <sup>-11</sup> ; 179 ; 11	1.8e <sup>-11</sup> ; 126 ; 71
PIE	-1.1e <sup>-10</sup> ; 121 ; 89	8.9e <sup>-11</sup> ; -5 ; 0
PPO	-6.9e <sup>-12</sup> ; 105 ; 20	7.9e <sup>-12</sup> ; -37 ; 65
SMT	-8.4e <sup>-14</sup> ; 39 ; 69	2.9e <sup>-11</sup> ; -121 ; 20
VAR	-1.8e <sup>-12</sup> ; -39 ; 18	1.2e <sup>-12</sup> ; 64 ; 36
VSN	-1.6e <sup>-11</sup> ; 120 ; 36	1.6e <sup>-11</sup> ; -149 ; 0
VSS	-7.3e <sup>-13</sup> ; 26 ; 57	1.3e <sup>-12</sup> ; 148 ; 19

Tableau mis en forme

Table 1. Strain tensors (Kostrov's method) for each of the eleven subarea. Strain rates display first ( $\dot{\epsilon}_1$ ) and third ( $\dot{\epsilon}_3$ ) eigenvalues of the strain tensor corresponding to compression and extension respectively, as well as their azimuth ( $\theta$ , in degrees from north) and dip ( $\delta$ , degrees) used to project the strain tensors at the surface in Figure 4.

To better explore the current tectonic regime in each sub-area, we investigated the distribution of stress orientations using focal mechanism inversions. All inverted earthquakes are equally weighted, regardless of their magnitude. Figure 5 shows the azimuths of maximum ( $\sigma_1$ ) and minimum ( $\sigma_3$ ) compressive stresses, as given by SI and a FSMI inversions, plotted

according to their plunge (*i.e.* the length of the stress axes being expressed as a unitary value\*cos(plunge)). The three principle stresses being orthogonal, horizontal  $\sigma_1$  alone (*i.e.*  $\sigma_1$  axis length at the maximum unitary value) represents a compressional regime, horizontal  $\sigma_3$  alone (*i.e.*  $\sigma_3$  axis length at the maximum unitary value) gives an extensional regime, and both horizontal  $\sigma_1$  and  $\sigma_3$  (*i.e.* both  $\sigma_1$  and  $\sigma_3$  axis lengths at the maximum unitary value) indicate a strike-slip regime. The most representative focal mechanism in each zone is plotted beside each sub-area. Associated azimuth and dip values as well as strike, dip, and rake of both inversions and the corresponding mean mechanism from SI inversion are listed in table 2. The FMSI inversion additionally reports a misfit value, listed after the principle stress components. The results of the two inversion methods are in rather good agreement for each of the 11 zones, highlighting the overall stability and the robustness of our stress inversions.

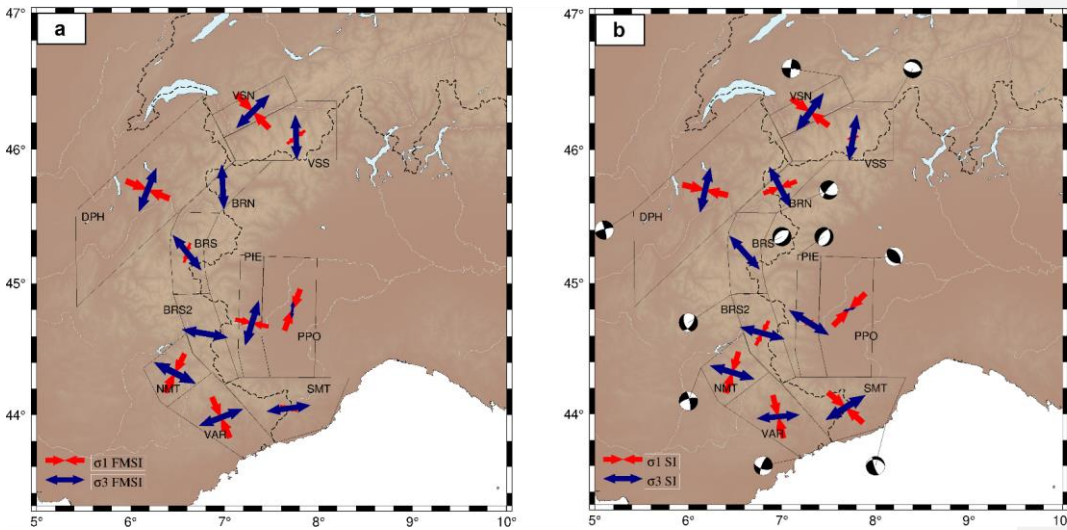


Figure 5. Comparison of stress orientations resulting from FMSI (a) and SI (b) inversions of focal mechanisms within each subarea. Most compressional ( $\sigma_1$ , in red) and least compressional ( $\sigma_3$  in blue) stresses are plotted given their plunge (*i.e.* arrows length depending on the plunge: the scale arrows in the bottom left corner represent  $0^\circ$  plunging stress axes (horizontal stresses), while  $90^\circ$  plunging stress axes will not be seen on the map). The mean focal mechanism retrieved from SI inversion, and corresponding to each partial stress tensor, is plotted for each subarea in b).



360

	FMSI stress orientations				SI stress orientations			mean mechanism		
	$\sigma_1$ ( $\theta$ ; $\delta$ )	$\sigma_2$ ( $\theta$ ; $\delta$ )	$\sigma_3$ ( $\theta$ ; $\delta$ )	misfit	$\sigma_1$ ( $\theta$ ; $\delta$ )	$\sigma_2$ ( $\theta$ ; $\delta$ )	$\sigma_3$ ( $\theta$ ; $\delta$ )	strike	dip	rake
BRN	173;73	267;1	357;17	6.242	70;41	232;46	332;8	217	76	-138
BRS	197;64	57;20	321;15	10.842	160;73	50;5	318;15	45	50	-97
BRS2	135;80	11;6	280;8	10.195	28;54	188;33	285;9	36	55	-47
DPH	292;1	188;86	22;4	8.710	283;1	21;80	193;9	255	82	174
NMT	207;23	26;67	117;0	8.088	197;23	14;66	107;1	348	79	-159
PIE	282;44	112;46	17;5	21.324	238;78	31;9	122;5	217	57	-78
PPO	21;20	289;5	184;69	11.130	45;13	137;7	254;74	323	47	99
SMT	106;68	355;8	262;20	9.556	131;58	334;29	238;10	161	77	-60
VAR	336;19	176;70	69;6	9.737	346;19	223;57	85;24	202	77	30
VSN	136;2	268;86	45;3	7.397	126;6	312;83	216;0	276	86	-175
VSS	234;62	96;22	358;17	7.905	256;76	101;11	10;5	94	58	-104

Tableau mis en forme

365

370

375

Table 2. Stress (FMSI and SI) results for each of the eleven subareas. Stress orientations display the azimuth ( $\theta$ , in degrees from north) and the dip ( $\delta$ , degrees) of the most compressional stress ( $\sigma_1$ ), intermediate stress ( $\sigma_2$ ), and least compressional stress ( $\sigma_3$ ) for the two methods. FMSI also yields a misfit value (dimensionless) for the deviatoric stress tensor constituted by the three principal stresses. SI yields the focal mechanism corresponding to the inverted deviatoric stress tensor.

~~The least compressive stress axis ( $\sigma_3$ ) presents quite similar azimuth values between the two solutions, except for the Piémontais sub-area (PIE), with a difference of  $105^\circ$  between  $\sigma_3$  azimuths derived from SI and FMSI inversions, and for the Po plain (PPO) zone which shows a  $70^\circ$   $\sigma_3$  azimuth difference while both methods highlights a dominant compressive tensor in this area (sub-vertical  $\sigma_3$  axis associated to sub-horizontal  $\sigma_1$  axis). Some azimuth and plunge differences are also observed for the compression axis ( $\sigma_1$ ) between the two solutions, but mainly for areas in which extension prevails ( $\sigma_1$  sub-vertical), such as in the BRN and BRS2 areas. Our results thus specifically suggest that the zonation defined for the Piémontais are contains seismicity of different tectonic regimes, either belonging to different fault segments or different depths.~~ Overall, the set of inversions allows deciphering six mostly extensive sub-areas in the core of the belt (VSS, BRN, BRS, BRS2, SMT, PIE), four strike-slip sub-areas at

the periphery (VSN, DPH, NMT and VAR) and only one compressive sub-area in the Po Plain (PPO).

To test the significance of the observed heterogeneity between the inner and outer parts of the belt, we implemented a MSATSI stress inversion (based on SI method, see above) on a  $0.5^{\circ} \times 0.5^{\circ}$  geographical grid for each cell encompassing at least ten focal mechanisms (Hardebeck and Michael, 2006). This inversion procedure allows to get past any a priori seismotectonic zoning for the Alpine stress determination along the arc of the orogen.

~~Moreover, it increases the spatial resolution of the derived stress field, which may enable to account for a varying stress field at higher spatial frequency such as in the Po plain.~~ Such an inversion on a regular  $0.5^{\circ} \times 0.5^{\circ}$  grid (Figure 6) is possible for the first time in the Alps thanks to the large number of focal mechanisms computed in our dataset, resulting in the highest resolution stress map to date in the Alps. It is worth noting that neighboring stress tensors appear consistent in orientation. The orientations are also in good agreement with the stress tensors derived in the seismotectonic zoning scheme. The orientations of the strike-slip tensors appear in good agreement with previous studies, whether at the regional (e.g. Delacou et al., 2004) or at the local scale (e.g. Bauve et al., 2014; Kastrup et al., 2004). However the orientation of the extensive tensors appear slightly less perpendicular to the belt than previously observed (e.g. Sue et al., 1999; 2007b; see section 4).

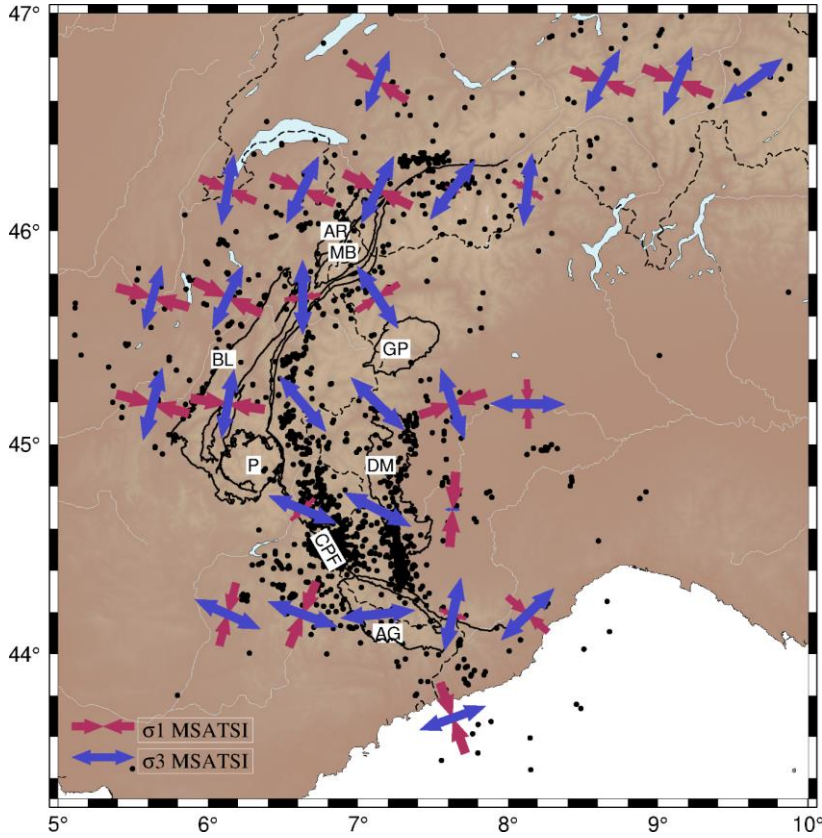


Figure 6. Stress orientations resulting from MSATSI inversion (based on the SI method) on a  $0.5^\circ \times 0.5^\circ$  grid, for all cells containing at least 10 focal mechanisms (black dots). Most compressional ( $\sigma_1$ , in red) and least compressional ( $\sigma_3$ , in blue) stresses are projected according to their plunge. Solid lines and their labels refer to major geological features described Figure 2.

Extension is localized along the Briançonnais and Piémontais seismic arcs (Figure 1) as previously shown (review in Sue et al. (2007b); section 4), but it is found oblique to the strike of the Alpine belt, whereas it has been often described as perpendicular to the orogen (Sue et al., 2007b). The angle between the direction of extension and the strike of the belt is of the order of  $30^\circ$  to  $40^\circ$ , except north of Gran Paradiso massif (GP) where the  $\sigma_3$  axis of the corresponding transtensional stress tensor is almost perpendicular to the strike of the belt. This shows that the extensional direction is almost systematically deflected clockwise with respect to the direction normal to the arc. This feature is observed all along the arcuate shape of the belt, from the Valais area in the North to the southernmost tip of the Alps in the South. All the western

periphery of the belt (corresponding to the zones VSN, DPH, NMT, VAR Figure 5) show strike-slip stress fields, with a rotating state of stresses compatible with dextral motions on fault parallel to the strike of the belt (such as the Belledonne fault, Thouvenot et al., 2003). Compression is once again only retrieved in the cell centered on the Po plain, with an axis oriented almost N-S. This grid-inversion shows the prevalence of strike-slip around the bend of the Western Alps, as well as the deflection of the extension in the core of the orogen with respect to its strike, and the very limited importance of compression.

### 3.3 Probabilistic reconstruction of tectonic regimes throughout the Western Alps

Spatial variations of the deformation modes are assessed through the Bayesian reconstruction of continuous surfaces for P and T axes plunges. This is achieved through a 2D regression, where hypocenter locations are first projected at the surface and depth is ignored. In the following all the focal mechanisms were projected ~~to at~~ the surface. Inversion tests were also implemented for different depth intervals projected at the surface (Figure S4). From a discrete set of values (P and T axes plunges for each event) distributed on a 2D map, the problem consists on reconstructing a smooth surface for these values. As shown with the earthquake classification in section 3.1, these two parameters are sufficient to describe the style of deformation. The Bayesian approach provides a full probability distributions for the P and T axes at any point in a 300x300 km<sup>2</sup> area covering the entire western part of the belt. From these two distributions, a continuous probabilistic map of the deformation style can be constructed in the region.

The information on the style of deformation retrieved from the Bayesian inversion, once combined to the information of the seismic energy released in the area, thus delivers a comprehensive view of the current seismic deformation in the western Alps. Figure 7a shows a smoothed map of the seismic flux in the area. This map was generated by interpolating the seismic moment ( $M_0$ ) values of events in the full dataset described in section 2.1. The seismic moment is estimated assuming that  $M_I = M_w$  in our region (section 2.3) and using Hanks and Kanamori (1979) magnitude-moment relationship.  $M_0$  values are then summed on the 25 years long period (the raw seismic moment map is displayed in Figure S3) and annualized. It appears from Figure 7a that most of the seismic energy was released during the considered time interval

along the Briançonnais arc, from the Briançon region to the Valais region, and along the  
 440 Piémontais arc.

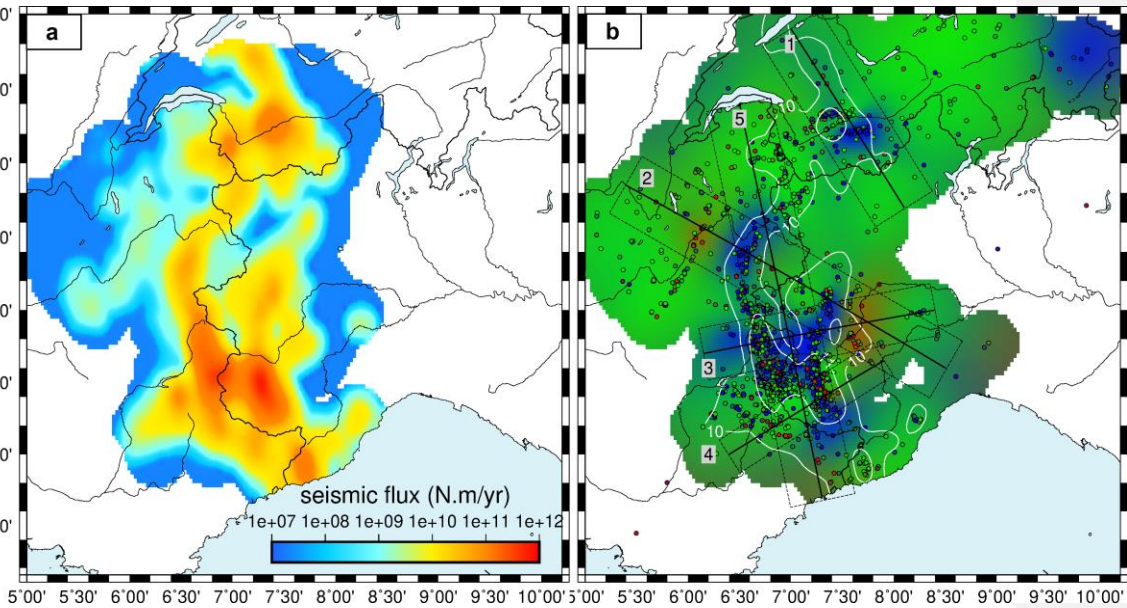


Figure 7. a) Seismic flux computed using the annualized seismic moment ( $M_0$ ) over the 1989-2014 time interval, summed in  $0.05^\circ \times 0.05^\circ$  cells and interpolated with an adjustable tension curvature surface algorithm (Smith and Wessel, 1990). Areas without focal mechanisms within 35 km are masked out, as well as mechanisms in the Ligurian sea and in ~~NE~~ Switzerland, due to the lack of constraints. b) Mean values of the distributions of P, T, and B axes plunges resulting from a Bayesian inversion. The color-code is according to the Kaverina classification of the style of deformation (the end members red, blue and green corresponding to reverse, normal and strike-slip deformation style, respectively). Focal mechanisms used are represented as dots filled with the same color-code. Areas without focal mechanisms within 35 km are masked out, as well as mechanisms in the Ligurian sea, due to the lack of constraints. White lines show isocontours of the seismic flux from a) in  $\text{Log}_{10}(M_0)$ . Profiles numbered from 1 to 5 correspond to the interpolated vertical cross-sections in Figure 9. Dashed boxes encompass the focal mechanisms projected along each profile on Figure 9.

Figure 7b shows a map of deformation modes obtained by combining the mean values  
 455 of the Bayesian posterior distributions for P and T axes plunges, converted to a color code in  
 | r/g/b triplet at each geographical location, ~~consistently with~~ according to the ternary diagram  
 representation (Figure 2b). Transcurrent and transtensive deformation predominate all over the  
 belt. Extension is specifically localized in the core of the belt, as shown by previous studies  
 (review in Sue et al. (2007b)). However, whereas previous works have shown a continuous  
 460 stretch of extension, our interpolation shows much more localized extensional areas. They are

located discontinuously along the Briançonnais seismic arc (running along the CPF from the southern Briançonnais region to the Swiss Valais region, Figure 1) and the Piémontais seismic arc and embedded within an overall strike-slip regime that prevails throughout (Figure 7). The extensional areas correspond in ~~the overall general~~ to areas of higher seismic energy release, even if some strike-slip areas also bear significant energy such as in the Aiguilles Rouges/Mont-blanc crystalline massifs (Figure 6). ~~Compressive patterns are retrieved from our interpolation in the Po plain, as seen above in the stress inversion, but also in a very small area of the external zone along the Belledonne fault.~~ Figure 8 shows the standard deviations of the P and T axes plunges probability distributions (see section 2.2). Uncertainties range between 5 and 20 degrees on interpolated P and T axes plunges. As in any inverse problem, the level of uncertainty associated with the solution can only be interpreted relative to the level of resolution. Here, it is important to keep in mind that the solution model is smooth and represents an average over a given wavelength. The model uncertainties shown in Figure 8 are associated with this spatial average, and can therefore be much smaller than the data variability or data uncertainties (see Choblet et al., 2014). ~~In the overall, transitional areas between pure styles of deformation, and areas at the border of the network are less constrained as shown by higher uncertainties.~~ Figure 8b shows that on the two compressive patterns retrieved, only the one lying east of the Piémontais arc appears as a robust feature.

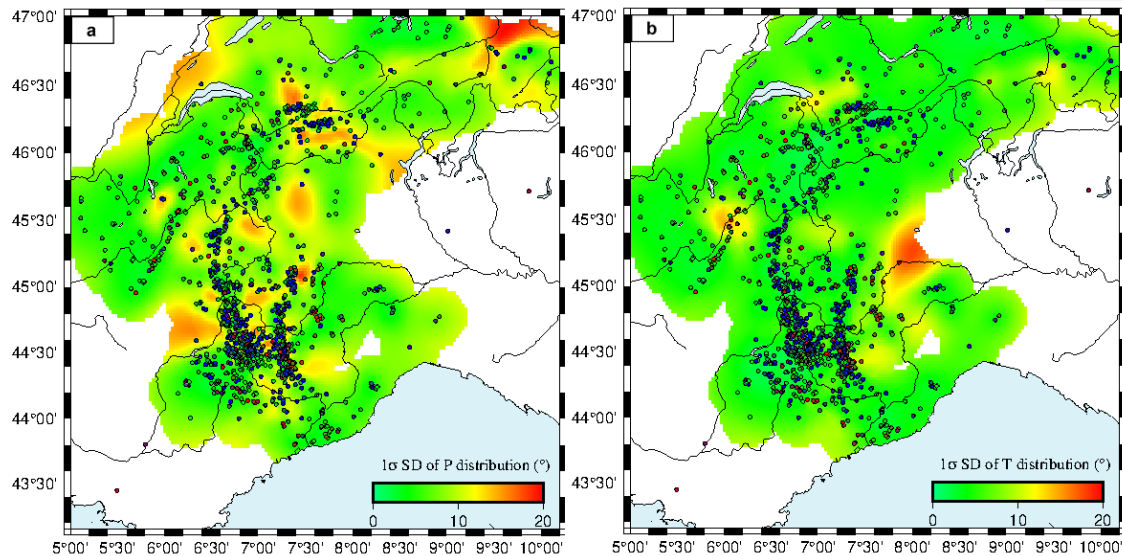


Figure 8. 1-sigma uncertainties (in degrees) on the mean values of P distributions (a) and of T distributions (b) resulting from the Bayesian interpolation in Figure 7. Superimposed focal mechanisms allow us to distinguish between two types of higher uncertainty areas: areas without enough data, and areas displaying high data heterogeneity.

To investigate the spatial variability of deformation mode at depth, and thus obtain a 3D-view of the overall deformation in the belt, we perform in a second step 2D inversions over five vertical cross-sections across the belt (Figures 7 and 9). To do so, we first projected focal mechanisms on the 2D cross-sections (Figure 7). We then interpolated P and T axes plunges in the vertical 2D cross-section. The 1-sigma uncertainties of the P and T axes plunges probability distributions are displayed in Figure S5 and S6 respectively. The cross-sections uncertainties show that in ~~the overall~~ general the localizations of the deformation patches are well resolved, while their exact spatial extent is less constrained.

Cross-section 1 (Figure 9a) comprises from the Swiss molasse basin to the North of the Po plain 153 focal mechanisms projected from 25 km on each side of the profile with depths in the 5-12 km range. Their inversion shows a majority of strike-slip mechanisms, with a pattern of extension localized in the inner part of the chain in the Southern Valais area, east of the CPF trace (seismicity cluster and corresponding complex faulting style already described in previous studies, see for instance Maurer et al., 1997; Eva et al., 1998; Diehl et al., 2018; 2021). A small extensional zone appears at 10 km depth under the Northern Valais seismic zone, encompassed in a major transcurrent signal. These results are consistent with the ~~inversion obtained at the surface~~ surface-projected results. The extension appears to be relatively shallow on this cross-section, as it develops from 10 km depth up to the surface.

Interpolated cross-section 2 (Figure 9b) is located more or less along the ECORS profile (section 4.1; Marchant and Stampfli (1997)). It is constrained by 218 focal mechanisms distributed over 25 km on each side of the profile. The focal depths are quite shallow (*i.e.* approximately 10 km) in the western part of the section and increases significantly eastward, at around 140 km along the profile, from 10 up to 30 km deep. This section shows two extensional areas, one in the shallow part corresponding to the Briançonnais arc east of the CPF, and the other one, around 20 km deep, corresponding to the northern tip of the Piémontais arc beneath the DM massif, separated by an area of strike-slip regime, as shown in Figure 7b. This section reveals a striking juxtaposition of extension and compression at 190 km along the profile. This compression pattern lies underneath the Po plain at a depth of 20 to 25 km. The occurrence of this unique compressive pattern appears robust from Figures S5 and S6, even if the

Mis en forme : Retrait : Première ligne : 1,25 cm



juxtaposition limit between the extensive Piémontais pattern and the compression area seems less constrained.

Cross-section 3 (Figure 9c) runs from the Pelvoux massif (“P”, external zone) to the Po plain. It is made of 302 focal mechanisms up to 20 km away from the profile line, which corresponds to the width of deformation patches seen on the map (Figure 7b). It also shows a deepening of the seismicity from West to East, from 10 to 30 km. The vertical interpolation gives a quite different view of the extensional pattern compared to the map interpolation. ~~Indeed,~~ Figure 7b ~~thus~~ shows two extensive patterns separated by a narrow ~~band of~~ strike-slip ~~strip deformation~~ along the Briançonnais arc. The cross-section however reveals that this extension is rather continuous at depth, with a shallower strike-slip pattern on the top centered on the CPF. These features appear robust from the standard deviation cross-sections (Figure S5c and S6c). This strike-slip pattern located in the Briançonnais area seems to correspond to a local transcurrent zone in a regional extensional area. In continuity with cross-section 2 (Figure 9b), the compressional zone is located directly next to the extensional area, with a sharp boundary at depth (10-25 km), while the respective shapes of the compressional and extensive patterns are poorly resolved (Figure S5 and S6).

Cross-section 4 (Figure 9d) runs from the Provence area to the South of the Po plain and regroups 245 focal mechanisms located up to 15 km away from the profile. This profile is designed tighter than the other ones due to the higher heterogeneity in the focal mechanisms at the surface (Figure 7b). The vertical interpolation is consistent with the map interpolation and reveals that the extensive pattern seen on the Piémontais arc is rather deep (from 12 to 20 km deep) and is surrounded by a predominant strike-slip regime all around, and ~~more specifically~~ especially at shallower levels. The extensive area located at depth under the Piémontais arc appears robust; however, its lateral extension, deep under the Argentera massif and the Po plain seems poorly constrained.



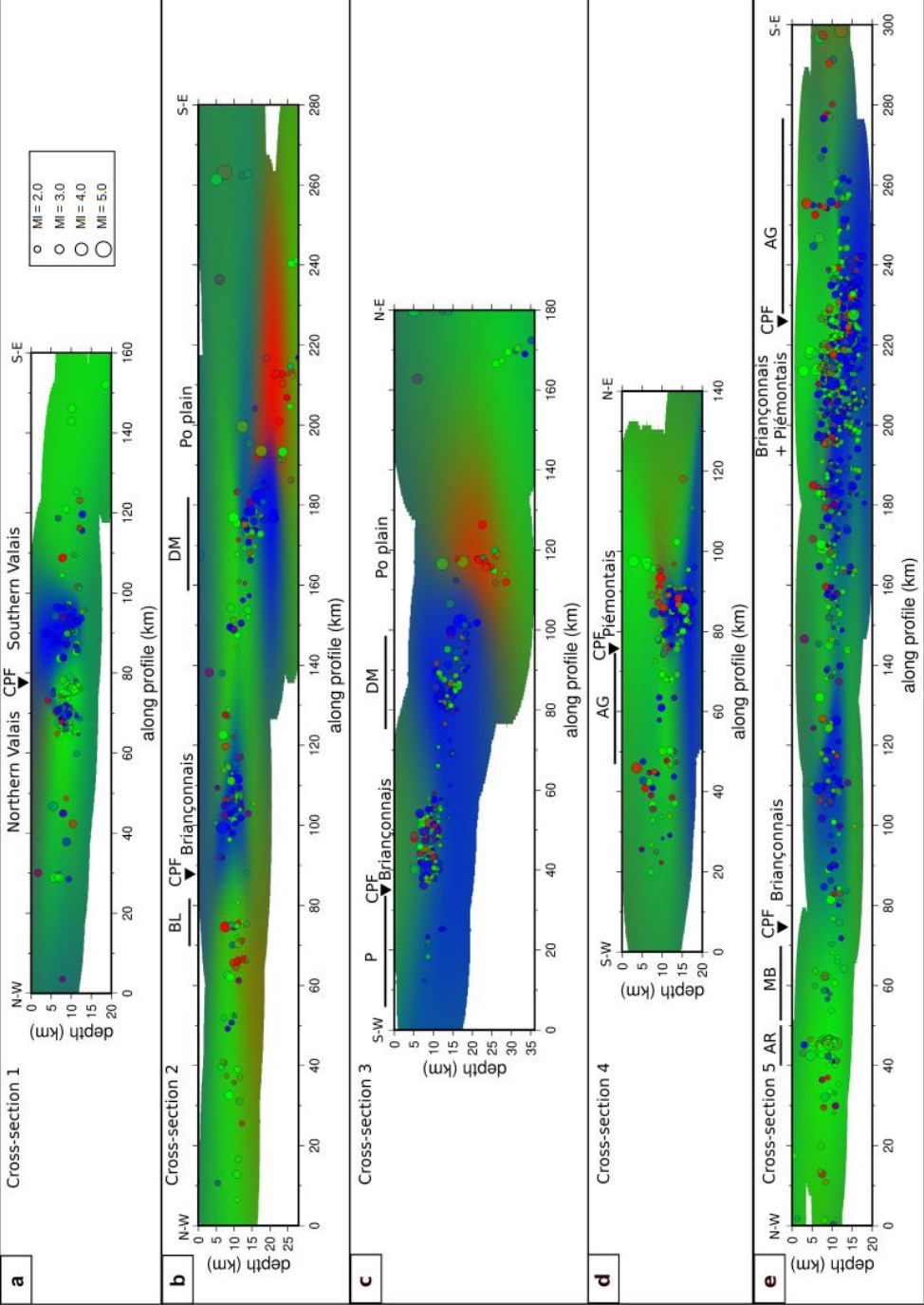


Figure 9. Vertical cross-sections displaying averages of P, T and B distributions from the Bayesian interpolation of events projected along 5 profiles. Focal mechanisms used are represented as dots with their size depending on their magnitude (Ml). Profile locations are indicated on Figure 7. Labels refer to geological features displayed on Figure 2c. Uncertainties on P and T plunges distributions are available in Figures S5 and S6.

~~These features appear robust from the standard deviation cross sections (Figure S5e and S6e). This strike-slip pattern located in the Briançonnais area seems to correspond to a local transcurrent zone in a regional extensional area. In continuity with cross section 2 (Figure 9b), the compressional zone is located directly next to the extensional area, with a sharp boundary at depth (10-25 km), while the respective shapes of the compressional and extensive patterns are poorly resolved (Figure S5 and S6).~~

~~Cross section 4 (Figure 9d) runs from the Provence area to the South of the Po plain and regroups 245 focal mechanisms located up to 15 km away from the profile. This profile is designed tighter than the other ones due to the higher heterogeneity in the focal mechanisms at the surface (Figure 7b). The vertical interpolation is consistent with the map interpolation and reveals that the extensive pattern seen on the Piémontais are is rather deep (from 12 to 20 km deep) and is surrounded by predominant strike-slip regime all around, and more specifically at shallower levels. The extensive area located at depth under the Piémontais are appears robust; however, its lateral extension, deep under the Argentera massif and the Po plain seems poorly constrained.~~

Cross-section 5 (Figure 9e) is drawn along the strike of the belt, and runs from Lake Geneva (Chablais area) to the region of Nice. It gathers 1186 focal mechanisms spread over 25 km on each side of the profile. This section aims at investigating the connections between the different extensional patches observed in the map interpolation (see also Figure S4). It appears that extension is characterized by a depth increasing from ~10 to ~20 km from North to South, while strike-slip remains dominant in the whole upper crust of the northern external zone and in the shallow levels to the South. In this specific section, extension appears as a 200km-long strip dipping southward, while cutting through external geological units both north and south of the profile while cutting through identical geological structures north and south of the profile. The extent of the deformation patterns is rather well resolved on this cross-section. Only the thin lineaments observed in the extensive area below the CPF and in the surrounding strike-slip areas appear to be artefacts.

Mis en forme : Retrait : Première ligne : 1,25 cm

## 4 Discussion

### 4.1 Comparative analysis of surficial and deep seismic deformation

The reconstructed maps of deformation styles presented in section 3.3 permits to address the structural control on the seismicity distribution and its deformation mode. From seismicity maps and focal mechanism distributions, extension first appears continuous along the Briançonnais and Piémontais seismic arcs. However, once interpolated, strike-slip to transtensive regimes are not only prevailing at the periphery of the chain but also at several places intersecting the Briançonnais seismic arc, such as in the Northern Briançonnais and Argentera, in association to significant energy release. Thus extension appears rather concentrated in several places along the belt in the southern Valais, in the Briançonnais, and in the Piémontais areas. Cross-sections views of the focal mechanisms distribution on the contrary seem to indicate transverse clusters of seismic events located beneath the Briançonnais and Piémontais arcs and the Po plain (cross-sections 2, 3 and 4 of Figure 9), sometimes undergoing a continuous extensive regime from west to east (cross-sections 3 and 4). These discrepancies are due to the vertical integration of all focal mechanisms ~~when working on map views~~ resulting from the projection to the surface. In particular, it hides the vertical stratification of the tectonic regime, where strike-slip events often occur above the extensive ones. This is well ~~exemplified~~ documented by the Piémontais extensive events (cross-sections 2 and 4).

The link between these deformation patterns and structural information is investigated in Figure 10, where we show the location of our focal mechanisms at depth superposed on top of two geophysical profiles. One profile is based on seismic reflection (ECORS-CROP, Marchant and Stampfli (1997)), and the second on local earthquake tomography (Solarino et al., 2018). Our focal mechanisms appear to follow the main horizontal reflectors along the ECORS-CROP profile (Figure 10a), with their depth increasing from west to east. Seismicity appears grouped in several patches of distinct deformation style along these two transverse profiles, especially beneath the Belledonne area and the Briançonnais and Piémontais arcs where the two main extensive patterns described in section 3.3 are lying. Both profiles highlight the limits between European and Adriatic upper crust, with a wedge of Adriatic mantle (the so-called Ivrea body, e.g. Lyon-Caen and Molnar (1989); Paul et al. (2001)) located at the boundary between the two crustal entities. Our focal mechanisms are localized in the upper crust. While the depth distribution of the focal mechanisms follow the dip of the European crust (Figure 10b), the distribution of the style of deformation does not appear controlled by the structure of the ~~former~~

European ~~slab~~Moho, both extensive and strike-slip events being imaged on the same sub-  
horizontal structure. However a few seismic events are found deeper in the mantle wedge  
(Malusà et al., 2017), which correspond to the compressive fault plane solutions observed in  
the Po plain (Figure 10b). The limit between the Piémontais extensive and the Po compressive  
patterns thus coincides with the boundary between the ~~former~~-European ~~slab~~-crust and the  
Adriatic ~~crust~~one. This is illustrated by the geometry of the Moho (Spada et al., 2017) on top  
of our map of interpolated deformation modes (Figure 10c), where the limit between the  
European and the Adriatic Moho separates the Piémontais extensive zone from the Po  
compressive one (Figure 10c).

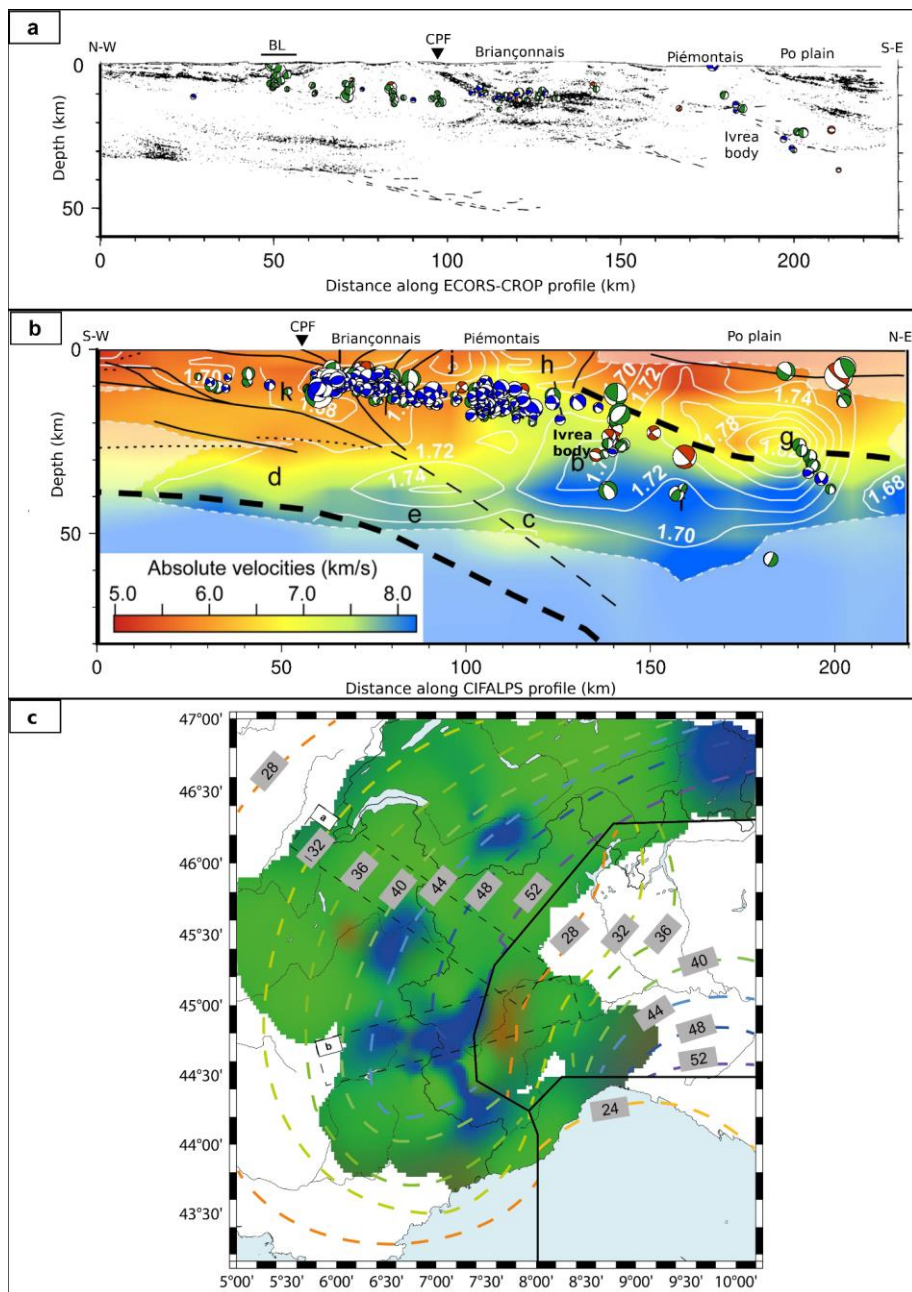


Figure 10. a) Cross-section of computed focal mechanisms (vertical sections) superposed projected on an ECORS-CROP seismic reflection profile (see projection width in c), modified

from Marchant and Stampfli (1997). ~~Green, blue, red are for strike-slip, normal and reverse mechanisms respectively.~~ Labels refer to geological features displayed on Figure 3. b) Focal mechanism ~~(vertical sections)~~ cross-section ~~superposed-projected~~ on a CIFALPS profile ~~(see projection width in c))~~ of local earthquake tomography, modified from Solarino et al. (2018). ~~color-coded as in a).~~ White contours are isolines of equal Vp/Vs, solid lines represent main tectonic features, and bold letters refer to different regions of the model discussed in Solarino et al. (2018). Thick dashed lines represent European and Adriatic Mohos after Solarino et al., 2018. The Adriatic Moho is deflected west of the Po plain (~15 km depth) at the location of the Ivrea body gravimetric anomaly. c) Contours of Moho depth (in km) from Spada et al. (2013) superposed on the map of deformation style from Figure 7. The European Moho (to the west), the Adriatic Moho (to the east), and the Ligurian Moho (to the south) are separated by thick black lines. The location of the seismic profiles a) and b) are indicated by dashed lines.

#### 4.2 Implications on Alpine geodynamics

~~This paper is focused on the analysis of an unprecedented number of focal mechanisms around the bend of the Western Alps and its connection with the Central Alps.~~ We used ~~in the present study~~ state of the art methods plus an innovative statistical approach to provide an updated 3D high-resolution view of the seismic deformation in this mountain belt. The unprecedented resolution of our analysis sheds new light regarding several detailed geodynamical aspects.

The current Alpine stress field and its related deformation mode have been investigated using inversion methods of focal mechanisms since the end of the 1990s (e.g. Baroux et al., 2001; Kastrup et al., 2004; Maurer et al., 1997) with an increasing accuracy. Actually, these studies dealt with more or less local/regional areas, and only Delacou et al. (2004) addressed the problem at the scale of the entire Western and Central Alps. All these previous surveys relied on a limited number of focal mechanisms with respect to the present investigation and they systematically were inverted within zones expected to be homogeneous in terms of deformation style, based on structural criteria. Notwithstanding these limitations, former stress inversions in the Alps have established a first order contrasted stress field (e.g. Maurer et al., 1997; Baroux et al., 2001; Sue et al., 2002; Delacou et al., 2004; Kastrup et al., 2004; Bauve et al., 2014). It is characterized by roughly orogen-perpendicular extension all along the backbone of the arc, surrounded by a transcurrent stress state at the periphery of the orogeny, locally modulated by a reverse component. These features remain everywhere compatible with a dextral motion along the strike of the belt. One of the main improvements of the present paper is the stress inversion using a grid strategy (section 3.2), which is independent of any *a priori* zonation. Our new high-resolution imaging of the stress field around the Alpine arc injects important modulations into this first-order distribution. Firstly, transcurrent tectonism appears robust and much more important in the whole Alpine realm than previously thought, in association with significant

energy release. This point is very important in terms of geodynamic interpretations and could not be properly imaged by the previous 2D analyses (Delacou et. al (2004)). Secondly, we confirm the prevalence of extension in the core of the Alpine arc, but we point out a more complex scheme for the extensional zones (Figure 7 and Figure 9) in 3D, which appear now as extensional patches embedded within an overall transcurrent field (Figure 7). These patches are located all along the so-called Briançonnais and Piémontais seismic arcs, but the continuity of the extensional area is no more supported by the inversion, as we retrieved 4 main zones of extension more or less disconnected one from the other (Figure 7). The in-depth geometry of the extensional zones is also revealed for the first time by our inversion of the deformation mode (Figure 9). Thirdly, the direction of the least compressive stress axes in the internal zones (namely the  $\sigma_3$  axes) is almost systematically deflected of 30° to 40° clockwise from the orogen-perpendicular extension ~~pointed out up to now~~ previously proposed (Sue et al., 2007; Delacou et al., 2004; Sue et al., 1999; Eva et al., 1997). Moreover, we retrieved fewer and smaller local compressive areas as shown by the previous studies (e.g. Delacou et al. (2004); Eva et al. (1997)). The only significant zone of shortening appears to be located in the Po plain. We also found a small zone of compression at the western front (Belledonne zone), but it is poorly constrained. Although some individual reverse focal mechanisms are noticed to the South of the arc (Mercantour and Var regions, Figure 2 and Figure 3), neither the deformation mode inversion nor the stress inversion pointed out a reliable stable compression in this zone, in contrast to the interpretation of Delacou et al. (2004). This may arise from the lack of data in the Ligurian Sea and surroundings in our dataset (for this specific zone see for instance Béthoux et al. (1992); Larroque et al. (2016)). The compressive pattern we obtained in the Po plain is, however, stable and sharply juxtaposed with extension at the limit between Adriatic and European plates.

The contrasting juxtaposition of extension and compression occurs in a region of complex geometry and complex processes related to the Alpine orogeny (plate boundaries, Ivrea body). It has sometimes been interpreted in the literature as a border effect of gravitational collapse of the Western Alpine chain (e.g. Delacou, 2005), as well as a marker of indentation resulting from Africa-Eurasia current plate dynamics in other studies (e.g. Eva et al., 2020). In both cases, sharp variations in the stress field are expected. In the case of the gravitational collapse for instance, stresses depend on the spatial derivative of the load, and to some extent varies like the derivative of the crustal thickness and topography: clearly, these variations occur on short spatial scales. While we cannot decipher which processes are at the origin of this very specific and local pattern, gravitational collapse schemes fail to explain the localized



compressive pattern observed at the border of the chain, and indentation. ~~While we cannot decipher which processes are at the origin of this very specific and local pattern, we stress that too few compressive patterns are retrieved at the border of the chain to support the gravitational collapse scheme, and that indentation~~ by Adria or Corso-Sardinia blocks does not appear to be the main process controlling crustal deformation nowadays in the Western Alps, since a majority of extension and strike-slip mechanisms are found, drawing a self-consistent transcurrent deformation field over the whole Western Alpine region.

Beyond the seismotectonic approach *sensu stricto* (i.e. focal mechanisms analyses), the comparison of the seismotectonic-related deformation with the one mapped using geodesy can still enhance our comprehension of the Alpine geodynamics. The horizontal geodetic deformation in the Alps is well correlated with the seismotectonic one in terms of deformation style and of orientations (Figure 11; Walpersdorf et al. (2018)). In particular, the extensional tectonics observed in the core of the belt are now generally identified by recent GNSS studies (Masson et al., 2019; Mathey et al., 2020; Sánchez et al., 2018; Walpersdorf et al., 2015). However, vertical motions seen by GNSS yield a regional uplift roughly correlated to the Alpine topography in the northern and central part of the Western Alps, possibly up to 1 to 2 mm/yr (e.g. Serpelloni et al., 2013; Nocquet et al., 2016; although the magnitude can be disputed, see Husson et al., 2018). Our precise mapping of the seismic extension compared to GNSS uplift shows that the patterns of extension and uplift are spatially uncorrelated, especially in the southern branch of the Alpine arc (Figure 11). Only two patterns of extension of our interpolated deformation map (in the Northern Briançonnais seismic arc BRN and in the Southern Valais VSS) ~~correlate~~ ~~locate~~ with uplift. The extension located along the Piémontais arc is on the contrary associated with a zone of subsidence. Therefore, we state that uplift and



extension, which were sometimes considered correlated (Champagnac et al., 2007; Vernant et al., 2013), are partially disconnected.

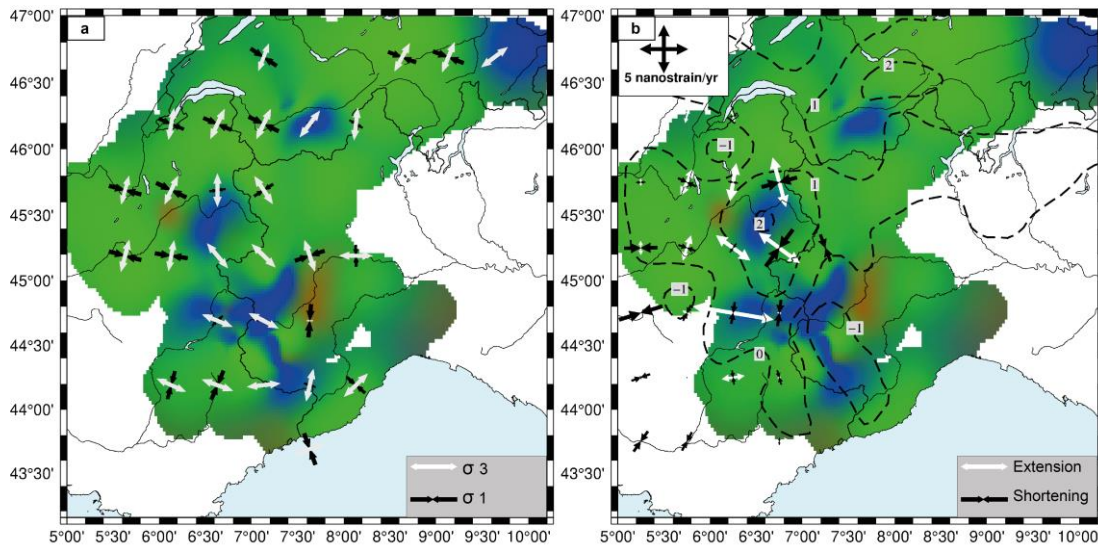


Figure 11. a) Stress field from MSATSI inversion from Figure 6. b) GNSS strain rates from Walpersdorf et al. (2018) showing extension (white arrows) and compression (black arrows). Dashed lines represent contours of vertical velocities (in mm/yr) from Sternai et al. (2019). In the background of both graphs is the Bayesian interpolation of deformation style from focal mechanisms from Figure 7.

In terms of geodynamic, the question of the processes driving the current deformation of the Alps remains a matter of debate. The prevalence of extension in the core of the belt, reinforced mounting evidence of geodetic uplift of the elevated regions of the Western Alps, led to the development of a series of models, alternatively involving intrinsic forces due to crustal and/or lithospheric roots, and extrinsic processes (see Sternai et al. (2019) for a review). Extrinsic processes include the glacial isostatic adjustment (GIA; e.g. Gudmundsson (1994); Mey et al. (2016); Chéry et al. (2016)), erosion (e.g. Champagnac et al., 2007; Sternai et al., 2012). According to Sternai et al. (2019) they could explain all together 50 to 70% of the uplift rates observed in the Alps. Besides isostatic adjustment to crustal deformation, intrinsic processes are related to deep dynamics in the Alpine lithosphere and predictions largely rely on the knowledge of the thermo-mechanical properties of deep structures. The current state of the European slab beneath the Western Alps remains to this day a matter of debate. ~~Indeed,~~

Evidence for both a detached slab (e.g. Lippitsch et al., 2003, Kissling et al., 2006, Diehl et al., 2009, Kästle et al., 2018) or a continuous slab (e.g. Piromallo and Faccenna, 2004; Zhao et al., 2015; 2016b) are claimed between different tomography models. The focal mechanisms derived in this study thus only provide seismic deformation styles up to 35 km, ~~when-while~~ the ~~debated~~ continuation of the European Moho beneath the Adriatic one ~~is likely deeper, deeper~~ than ~ 60 km, ~~is under ongoing discussions~~. While our results constrain a depth too shallow to help decipher between these two end-member models, we rely on the literature to suggest that a recently (< 5 My, e.g. Lippitsch et al., 2003) detached slab, with its detached extent nowadays located beneath the eastern margin of the Western Alps, could induce extension as well as uplift, due to lithospheric rebound processes and/or mantle upwelling related to the sinking into the asthenosphere of more dense lithospheric material (e.g. Sternai et al., 2019). Slab dynamics in particular (see Lippitsch et al. (2003); Zhao et al. (2015); Kästle et al. (2018)) can cause transient dynamic topography (e.g., Faccenna and Becker, 2020), or influence exhumation processes (Baran et al., 2014; Fox et al., 2015).

All these mechanisms may, jointly or independently, explain the short-wavelength variations of the seismicity and kinematics. Yet, they ~~cannot~~ account for the robust transcurrent motion that prevails over the entire region. This strain field requires a more global geodynamic cause, and far field forces need to be invoked. Plate tectonics set the stage for local Alpine tectonics. The counterclockwise rotation of Adria with respect to stable Europe (e.g. Calais et al., 2002; Serpelloni et al., 2005, 2007) largely counterbalance buoyancy forces (Delacou et al., 2005). ~~While a purely plate-related geodynamic model seems discarded by now (D'Agostino et al., 2008; Devoti et al., 2008) due to the evidence of both extension and uplift in many places all along the Western Alpine arc, which cannot be explained by plate kinematics alone, we stress that our observations revive the role of plate motion in interaction with buoyancy forces in an attempt to explain the current Alpine kinematics and seismicity (Figure 12).~~ ~~While a purely plate-related geodynamic model seems discarded by now (D'Agostino et al., 2008; Devoti et al., 2008) due to the evidence of both extension and uplift in many places all along the Western Alpine arc, our observations may revive the role of plate motion in an attempt to explain the current Alpine kinematics and seismicity (Figure 12).~~ Indeed, in addition to the predominance of transcurrent tectonics that we point out at the scale of the whole Western and Central Alps and forelands, we show a deflection of the extension axes in the core of the belt with respect to simple orogen-perpendicular extension. Both the transcurrent stress field at the periphery of the orogen, and the deflection of the extensional direction in the inner zones could be driven by

counterclockwise rotation of Adria with respect to Europe. According to this scenario, buoyancy forces set the short-wavelength patterns of extension and compression, while far-field forces control the overall transcurrent field. Their joint effect interact to produce the complex deformation pattern and stress field revealed here (Figure 12).

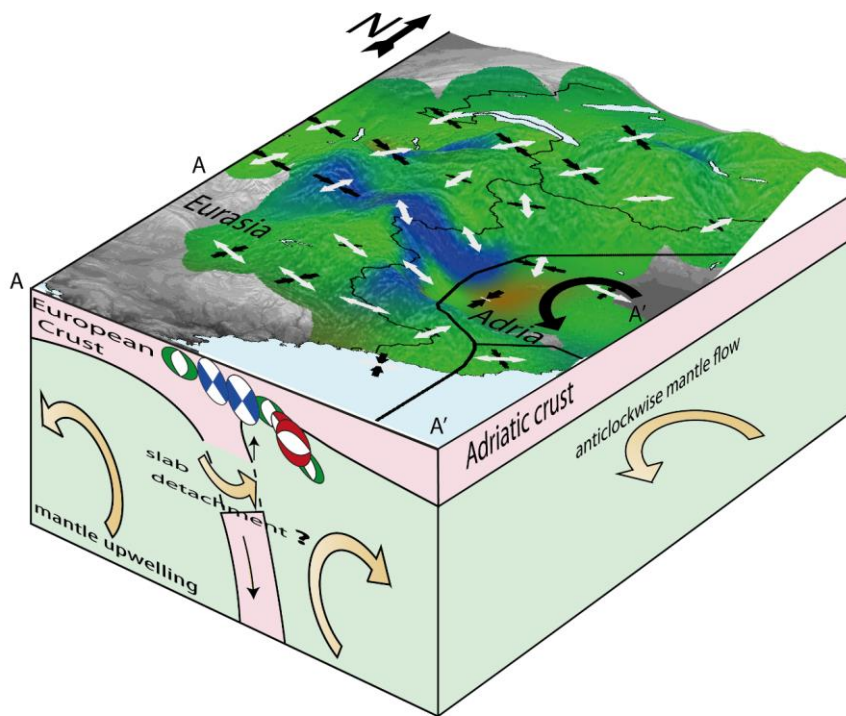


Figure 12. Interpretative 3D block diagram of the current geodynamics of the Western Alps. The southern front of the diagram represents the interpretative A-A' cross-section running from the Pelvoux massif to the Po plain. Main observations are represented as in Figure 11a). Forces suggested to be involved together to produce the observed seismic deformation field (far-field plate kinematics and buoyancy forces) are represented as solid arrows (Adria anticlockwise rotation as a black arrow and mantle upwelling and possible slab detachment as gold arrows).

775 **5 Conclusions**

The three-dimensional analysis of the mode and orientation of seismic deformation within the Western Alps provides, for the first time, a spatial resolution ~~allowing to get rid without the use~~ of any *a priori* seismotectonic zonation. The exceptional density of seismic data acquired within the Western Alps for the past 25 years allowed us to derive focal mechanisms for low magnitude events that were, to date, unavailable. From this new dataset we inferred a continuous seismic deformation field characterized by the deformation style, at the surface and at depth, associated with an up-to-date objective surface stress field. The resulting seismic deformation field is overall consistent with the deformation patterns retrieved by previous seismotectonics studies as well as with the horizontal geodetic observations. At depth, the distribution of computed focal mechanisms matches the main reflectors already unveiled by seismic imaging methods. Our results also highlight new features that could be observed only due to the increased spatial resolution we provided. Most importantly, the probabilistic inversion of focal mechanisms points out a robust predominant strike-slip regime at the regional scale, with dextral motion consistent with the strike of the belt, and robust discontinuous extensive patches in the core of the belt, while restricting robust compression to the Po plain and western Alpine front. The pattern of deformation at depth, raises up the issue of the continuity of the extension pattern, as patches of extension appear clustered along the two main seismic arcs. Extensional direction are in good agreement with long term geodetic strain rates, and appear robustly oblique to the arc from three inversion methods. The high spatial resolution seismotectonic field sheds a new light on the current dynamics of the Alpine orogen, wherein far field plate tectonics, linked to the counterclockwise rotation of Adria with respect to Europe imposes a global transcurrent regime, while buoyancy forces explain the short wavelength variations of extension and marginal compression in the core of the belt.

800 **Data availability**

All the focal mechanisms computed for this study as well as the corresponding dataset are available ~~in .pdf format and in digital format (.txt)~~ in the supplementary materials.

**Acknowledgments**

805 This work was funded by both the IRSN (Institut de Radioprotection et de Sûreté Nucléaire) and the LabEx OSUG@2020 (Investissement d'avenir – ANR10LABX56). The authors thank

two anonymous reviewers for their help in improving the manuscript. The authors would like to thank the Sismalp team for maintaining the regional seismic observation network. This work contributes to an effort of valorization of long-term seismic and geodetic observations in the framework of the RESIF-EPOS National Research Infrastructure (Réseau Sismologique et géodésique Français, doi:10.15778/[RESIF.FR](https://doi.org/10.15778/RESIF.FR)). This work was only possible thanks to the operators of the following networks: RESIF (FR) <https://doi.org/10.15778/RESIF.FR>, RSNI (GU) <https://doi.org/10.7914/SN/GU>, SED (CH) <https://doi.org/10.12686/sed/networks/ch>, CIFALPS (YP) (<https://doi.org/10.15778/RESIF.YP2012>).

### Supplementary Materials

*Supplementary\_SE\_Mathey.pdf* contains figures S1, S2, S3, S4, S5 and S6 and table S1  
*liste\_meca.txt* contains table S1 in digital format

### References

- Alvarez-Gómez, J. A.: FMC—Earthquake focal mechanisms data management, cluster and classification, *SoftwareX*, 9, 299–307, doi:10.1016/j.softx.2019.03.008, 2019.
- Baran, R., Friedrich, A. M. and Schlunegger, F.: The late Miocene to Holocene erosion pattern of the Alpine foreland basin reflects Eurasian slab unloading beneath the western Alps rather than global climate change, *Lithosphere*, 6(2), 124–131, 2014.
- Baroux, E., Béthoux, N. and Bellier, O.: Analyses of the stress field in southeastern France from earthquake focal mechanisms, *Geophys. J. Int.*, 145(2), 336–348, doi:10.1046/j.1365-246x.2001.01362.x, 2001.
- Bauve, V., Plateaux, R., Rolland, Y., Sanchez, G., Bethoux, N., Delouis, B. and Darnault, R.: Long-lasting transcurrent tectonics in SW Alps evidenced by Neogene to present-day stress fields, *Tectonophysics*, 621, 85–100, doi:10.1016/j.tecto.2014.02.006, 2014.
- Bertrand, A. and Sue, C.: Reconciling late faulting over the whole Alpine belt: from structural analysis to geochronological constraints, *Swiss J. Geosci.*, 110(2), 565–580, 2017.
- Béthoux, N., Fréchet, J., Guyot, F., Thouvenot, F., Cattaneo, M., Eva, C., Nicolas, M. and Granet, M.: A closing Ligurian Sea?, *Pure Appl. Geophys.*, 139(2), 179–194, doi:10.1007/BF00876326, 1992.
- Bilau, A., Rolland, Y., Schwartz, S., Godeau, N., Guihou, A., Deschamps, P., Brigaud, B., Noret, A., Dumont, T. and Gautheron, C.: Extensional reactivation of the Penninic Frontal Thrust 3&thinsp;Ma ago as evidenced by U-Pb dating on calcite in fault zone cataclasite, *Solid Earth Discuss.*, 1–24, doi:https://doi.org/10.5194/se-2020-119, 2020.
- Billant, J., Hippolyte, J.-C. and Bellier, O.: Tectonic and geomorphic analysis of the Belledonne border fault and its extensions, *Western Alps, Tectonophysics*, 659, 31–52, doi:10.1016/j.tecto.2015.07.025, 2015.

- Bodin, T., Salmon, M., Kennett, B. L. N. and Sambridge, M.: Probabilistic surface reconstruction from multiple data sets: An example for the Australian Moho, *J. Geophys. Res. Solid Earth*, 117(B10), doi:10.1029/2012JB009547, 2012.
- 850 Calais, E., Nocquet, J.-M., Jouanne, F. and Tardy, M.: Current strain regime in the Western Alps from continuous Global Positioning System measurements, 1996–2001, *Geology*, 30(7), 651–654, doi:10.1130/0091-7613(2002)030<0651:CSRITW>2.0.CO;2, 2002.
- 855 Cara, M., Cansi, Y., Schlupp, A., Arroucau, P., Béthoux, N., Beucler, E., Bruno, S., Calvet, M., Chevrot, S., Deboissy, A., Delouis, B., Denieul, M., Deschamps, A., Doubre, C., Fréchet, J., Godey, S., Golle, O., Grunberg, M., Guilbert, J., Haugmard, M., Jenatton, L., Lambotte, S., Leobal, D., Maron, C., Mendel, V., Merrer, S., Macquet, M., Mignan, A., Mocquet, A., Nicolas, M., Perrot, J., Potin, B., Sanchez, O., Santoire, J.-P., Sèbe, O., Sylvander, M., Thouvenot, F., Woerd, J. V. D. and Woerd, K. V. D.: SI-Hex: a new catalogue of instrumental seismicity for metropolitan France, *Bull. Société Géologique Fr.*, 186(1), 3–19, doi:10.2113/gssgfbull.186.1.3, 2015.
- 860 Cauzzi, C. and Clinton, J.: A high- and low-noise model for high-quality strong-motion accelerometer stations, *Earthq. Spectra*, 29(1), 85–102, doi:10.1193/1.4000107, 2013.
- 865 Champagnac, J. D., Sue, C., Delacou, B., Tricart, P., Allanic, C., & Burkhard, M.: Miocene lateral extrusion in the inner western Alps revealed by dynamic fault analysis. *Tectonics*, 25(3), 2006.
- Champagnac, J. D., Molnar, P., Anderson, R. S., Sue, C. and Delacou, B.: Quaternary erosion-induced isostatic rebound in the western Alps, *Geology*, 35(3), 195–198, doi:10.1130/G23053A.1, 2007.
- 870 Champagnac, J.-D., Molnar, P., Sue, C. and Herman, F.: Tectonics, climate, and mountain topography, *J. Geophys. Res. Solid Earth*, 117(B2), 2012.
- Chéry, J., Genti, M. and Vernant, P.: Ice cap melting and low-viscosity crustal root explain the narrow geodetic uplift of the Western Alps, *Geophys. Res. Lett.*, 43(7), 3193–3200, doi:10.1002/2016GL067821, 2016.
- 875 Choblet, G., Husson, L., & Bodin, T. : Probabilistic surface reconstruction of coastal sea level rise during the twentieth century, *Journal of Geophysical Research: Solid Earth*, 119(12), 9206–9236, 2014.
- 880 Coward, M. and Dietrich, D.: Alpine tectonics—an overview, *Geol. Soc. Lond. Spec. Publ.*, 45(1), 1–29, 1989.
- D’Agostino, N., Avallone, A., Cheloni, D., D’Anastasio, E., Mantenuto, S. and Selvaggi, G.: Active tectonics of the Adriatic region from GPS and earthquake slip vectors, *J. Geophys. Res. Solid Earth*, 113(B12), doi:10.1029/2008JB005860, 2008.
- 885 D’Amico, S.: Moment tensor solutions: A useful tool for seismotectonics, Springer., 2018.
- Delacou, B., Sue, C., Champagnac, J.-D. and Burkhard, M.: Present-day geodynamics in the bend of the western and central Alps as constrained by earthquake analysis, *Geophys. J. Int.*, 158(2), 753–774, doi:10.1111/j.1365-246X.2004.02320.x, 2004.

- 890 Delacou, B., Sue, C., Champagnac, J.-D. and Burkhard, M.: Origin of the current stress field in the western/central Alps: role of gravitational re-equilibration constrained by numerical modelling, *Geol. Soc. Lond. Spec. Publ.*, 243(1), 295–310, 2005.
- Devoti, R., Riguzzi, F., Cuffaro, M. and Doglioni, C.: New GPS constraints on the kinematics of the Apennines subduction, *Earth Planet. Sci. Lett.*, 273(1), 163–174, doi:10.1016/j.epsl.2008.06.031, 2008.
- 895 Diehl, T., Husen, S., Kissling, E., & Deichmann, N. : High-resolution 3-DP-wave model of the Alpine crust, *Geophysical Journal International*, 179(2), 1133–1147, 2009.
- 900 Diehl, T., Clinton, J., Deichmann, N., Cauzzi, C., Kästli, P., Kraft, T., ... & Wiemer, S. : Earthquakes in Switzerland and surrounding regions during 2015 and 2016. *Swiss Journal of Geosciences*, 111(1), 221–244, 2018.
- Diehl, T., Clinton, J., Cauzzi, C., Kraft, T., Kästli, P., Deichmann, N., ... & Wiemer, S. : Earthquakes in Switzerland and surrounding regions during 2017 and 2018. *Swiss Journal of Geosciences*, 114(1), 1–29, 2021.
- 905 Eva, E., Solarino, S., Eva, C. and Neri, G.: Stress tensor orientation derived from fault plane solutions in the southwestern Alps, *J. Geophys. Res. Solid Earth*, 102(B4), 8171–8185, doi:10.1029/96JB02725, 1997.
- 910 Eva, E., Pastore, S. and Deichmann, N.: Evidence for ongoing extensional deformation in the western Swiss Alps and thrust-faulting in the southwestern Alpine foreland, *J. Geodyn.*, 26(1), 27–43, doi:10.1016/S0264-3707(97)00022-7, 1998.
- Eva, E., Malusà, M. and Solarino, S.: Seismotectonics at the transition between opposite-dipping slabs (western Alpine region), *Tectonics*, e2020TC006086, 2020.
- 915 Faccenna, C., & Becker, T. W. : Topographic expressions of mantle dynamics in the Mediterranean. *Earth-Science Reviews*, 103327, 2020.
- Fox, M., Herman, F., Kissling, E. and Willett, S. D.: Rapid exhumation in the Western Alps driven by slab detachment and glacial erosion, *Geology*, 43(5), 379–382, 2015.
- 920 Frohlich, C.: Triangle diagrams: ternary graphs to display similarity and diversity of earthquake focal mechanisms, *Phys. Earth Planet. Inter.*, 75(1–3), 193–198, 1992.
- Gephart, J. W.: FMSI: A fortran program for inverting fault/slickenside and earthquake focal mechanism data to obtain the regional stress tensor, *Comput. Geosci.*, 16(7), 953–989, doi:10.1016/0098-3004(90)90105-3, 1990.
- 925 Gudmundsson, G.: An order-of-magnitude estimate of the current uplift-rates in Switzerland caused by the Würm Alpine deglaciation, *Eclogae Geol. Helvetiae*, 87(2), 545–557, 1994.
- Gvirtzman, Z., Faccenna, C. and Becker, T. W.: Isostasy, flexure, and dynamic topography, *Tectonophysics*, 683, 255–271, doi:10.1016/j.tecto.2016.05.041, 2016.
- 930 Handy, M. R., M. Schmid, S., Bousquet, R., Kissling, E. and Bernoulli, D.: Reconciling plate-tectonic reconstructions of Alpine Tethys with the geological–geophysical record of spreading

and subduction in the Alps, *Earth-Sci. Rev.*, 102(3), 121–158, doi:10.1016/j.earscirev.2010.06.002, 2010.

Hanks, T. C. and Kanamori, H.: A moment magnitude scale, *J. Geophys. Res. Solid Earth*, 84(B5), 2348–2350, doi:10.1029/JB084iB05p02348, 1979.

935 Hardebeck, J. L. and Hauksson, E.: Stress Orientations Obtained from Earthquake Focal Mechanisms: What Are Appropriate Uncertainty Estimates?, *Bull. Seismol. Soc. Am.*, 91(2), 250–262, doi:10.1785/0120000032, 2001.

940 Hardebeck, J. L. and Michael, A. J.: Damped regional-scale stress inversions: Methodology and examples for southern California and the Coalinga aftershock sequence, *J. Geophys. Res. Solid Earth*, 111(B11), doi:10.1029/2005JB004144, 2006.

Hardebeck, J. L. and Shearer, P. M.: A New Method for Determining First-Motion Focal Mechanisms, *Bull. Seismol. Soc. Am.*, 92(6), 2264–2276, doi:10.1785/0120010200, 2002.

945 Hawkins, R., Husson, L., Choblet, G., Bodin, T., & Pfeffer, J.: Virtual tide gauges for predicting relative sea level rise, *Journal of Geophysical Research: Solid Earth*, 124(12), 13367–13391, 2019.

950 Hawkins, R., Bodin, T., Sambridge, M., Choblet, G., & Husson, L.: Trans-dimensional surface reconstruction with different classes of parameterization. *Geochemistry, Geophysics, Geosystems*, 20(1), 505–529, 2019.

Husson, L., Bodin, T., Spada, G., Choblet, G. and Kreemer, C.: Bayesian surface reconstruction of geodetic uplift rates: Mapping the global fingerprint of Glacial Isostatic Adjustment, *J. Geodyn.*, 122, 25–40, doi:10.1016/j.jog.2018.10.002, 2018.

955 Kästle, E. D., El-Sharkawy, A., Boschi, L., Meier, T., Rosenberg, C., Bellahsen, N., Cristiano, L. and Weidle, C.: Surface Wave Tomography of the Alps Using Ambient-Noise and Earthquake Phase Velocity Measurements, *J. Geophys. Res. Solid Earth*, 123(2), 1770–1792, doi:10.1002/2017JB014698, 2018.

960 Kastrup, U., Zoback, M. L., Deichmann, N., Evans, K. F., Giardini, D. and Michael, A. J.: Stress field variations in the Swiss Alps and the northern Alpine foreland derived from inversion of fault plane solutions, *J. Geophys. Res. Solid Earth*, 109(B1), doi:10.1029/2003JB002550, 2004.

965 Kissling, E., Schmid, S. M., Lippitsch, R., Ansorge, J., & Fügenschuh, B.: Lithosphere structure and tectonic evolution of the Alpine arc: new evidence from high-resolution teleseismic tomography, *Geological Society, London, Memoirs*, 32(1), 129–145, 2006.

Kostrov, V. V.: Seismic moment and energy of earthquakes, and seismic flow of rock, *Izv Acad Sci USSR Phys Solid Earth Engl Transl*, 1, 23–44, 1974.

970 Larroque, C., Delouis, B., Sage, F., Régnier, M., Béthoux, N., Courboux, F. and Deschamps, A.: The sequence of moderate-size earthquakes at the junction of the Ligurian basin and the Corsica margin (western Mediterranean): The initiation of an active deformation zone revealed?, *Tectonophysics*, 676, 135–147, doi:10.1016/j.tecto.2016.03.027, 2016.



- Laurendeau, A., Clement, C. and Scotti, O.: A unified Mw-based earthquake catalog for metropolitan France consistent with European catalogs, Montréal. [online] Available from: <https://hal.archives-ouvertes.fr/hal-02635592> (Accessed 16 August 2020), 2019.
- 975 Lippitsch, R., Kissling, E. and Ansorge, J.: Upper mantle structure beneath the Alpine orogen from high-resolution teleseismic tomography, *J. Geophys. Res. Solid Earth*, 108(B8), doi:10.1029/2002JB002016, 2003.
- Lund, B. and Townend, J.: Calculating horizontal stress orientations with full or partial knowledge of the tectonic stress tensor, *Geophys. J. Int.*, 170(3), 1328–1335, doi:10.1111/j.1365-246X.2007.03468.x, 2007.
- 980 Lyon-Caen, H. and Molnar, P. : Constraints on the deep structure and dynamic processes beneath the Alps and adjacent regions from an analysis of gravity anomalies. *Geophys. J. Int.*, 99(1), 19–32, 1989.
- 985 Malinverno, A., & Briggs, V. A. : Expanded uncertainty quantification in inverse problems: Hierarchical Bayes and empirical Bayes. *Geophysics*, 69(4), 1005-1016, 2004.
- Malusà, M. G., Zhao, L., Eva, E., Solarino, S., Paul, A., Guillot, S., Schwartz, S., Dumont, T., Aubert, C., Salimbeni, S., Pondrelli, S., Wang, Q. and Zhu, R.: Earthquakes in the western Alpine mantle wedge, *Gondwana Res.*, 44, 89–95, doi:10.1016/j.gr.2016.11.012, 2017.
- 990 Marchant, R. H. and Stampfli, G. M.: Subduction of continental crust in the Western Alps, *Tectonophysics*, 269(3), 217–235, doi:10.1016/S0040-1951(96)00170-9, 1997.
- Martínez-Garzón, P., Kwiatak, G., Ickrath, M. and Bohnhoff, M.: MSATSI: A MATLAB Package for Stress Inversion Combining Solid Classic Methodology, a New Simplified User-Handling, and a Visualization Tool, *Seismol. Res. Lett.*, 85(4), 896–904, doi:10.1785/0220130189, 2014.
- 995 Martinod, J., Jouanne, F., Taverna, J., Ménard, G., Gamond, J.-F., Darmendrail, X., Notter, J.-C. and Basile, C.: Present-day deformation of the Dauphine Alpine and Subalpine massifs (SE France), *Geophys. J. Int.*, 127(1), 189–200, doi:10.1111/j.1365-246X.1996.tb01544.x, 1996.
- 1000 Masson, C., Mazzotti, S., Vernant, P. and Doerflinger, E.: Extracting small deformation beyond individual station precision from dense Global Navigation Satellite System (GNSS) networks in France and western Europe, *Solid Earth*, 10(6), 1905–1920, doi:<https://doi.org/10.5194/se-10-1905-2019>, 2019.
- 1005 Mathey, M., Walpersdorf, A., Sue, C., Baize, S. and Deprez, A.: Seismogenic potential of the High Durance Fault constrained by 20 yr of GNSS measurements in the Western European Alps, *Geophys. J. Int.*, 222(3), 2136–2146, doi:10.1093/gji/ggaa292, 2020.
- Maurer, H. R., Burkhard, M., Deichmann, N. and Green, A. G.: Active tectonism in the central Alps: contrasting stress regimes north and south of the Rhone Valley, *Terra Nova*, 9(2), 91–94, doi:10.1111/j.1365-3121.1997.tb00010.x, 1997.
- 1010 Mazzotti, S., Jomard, H. and Masson, F.: Processes and deformation rates generating seismicity in metropolitan France and conterminous Western Europe, *BSGF - Earth Sci. Bull.*, 191, 19, doi:10.1051/bsgf/2020019, 2020.

- 1015 Mey, J., Scherler, D., Wickert, A. D., Egholm, D. L., Tesauero, M., Schildgen, T. F. and Strecker, M. R.: Glacial isostatic uplift of the European Alps, *Nat. Commun.*, 7(1), 13382, doi:10.1038/ncomms13382, 2016.
- Molnar, P.: Average regional strain due to slip on numerous faults of different orientations, *J. Geophys. Res. Solid Earth*, 88(B8), 6430–6432, doi:10.1029/JB088iB08p06430, 1983.
- 1020 Molnar, P. and Lyon-Caen, H.: Some simple physical aspects of the support, structure, and evolution of mountain belts., in *Processes in Continental Lithospheric Deformation*, Geological Society of America., 1988.
- Nocquet, J.-M. and Calais, E.: Geodetic Measurements of Crustal Deformation in the Western Mediterranean and Europe, *Pure Appl. Geophys.*, 161(3), 661–681, doi:10.1007/s00024-003-2468-z, 2004.
- 1025 Nocquet, J.-M., Sue, C., Walpersdorf, A., Tran, T., Lenôtre, N., Vernant, P., Cushing, M., Jouanne, F., Masson, F., Baize, S., Chéry, J. and van der Beek, P. A.: Present-day uplift of the western Alps, *Sci. Rep.*, 6(1), 28404, doi:10.1038/srep28404, 2016.
- 1030 Paul, A., Cattaneo, M., Thouvenot, F., Spallarossa, D., Béthoux, N. and Fréchet, J.: A three-dimensional crustal velocity model of the southwestern Alps from local earthquake tomography, *J. Geophys. Res. Solid Earth*, 106(B9), 19367–19389, doi:10.1029/2001JB000388, 2001.
- Piromallo, C., & Faccenna, C. : How deep can we find the traces of Alpine subduction?. *Geophysical Research Letters*, 31(6), 2004 ?
- 1035 Potin, B.: Les Alpes occidentales : tomographie, localisation de séismes et topographie du Moho, thesis, Grenoble Alpes, 1 July. [online] Available from: <http://www.theses.fr/2016GREAU022> (Accessed 27 February 2020), 2016.
- 1040 RESIF. RESIF-RLBP French Broad-band network, RESIF-RAP strong motion network and other seismic stations in metropolitan France [Data set]. RESIF - Réseau Sismologique et géodésique Français. 1995 <https://doi.org/10.15778/RESIF.FR>
- Sánchez, L., Völksen, C., Sokolov, A., Arenz, H. and Seitz, F.: Present-day surface deformation of the Alpine region inferred from geodetic techniques, *Earth Syst. Sci. Data*, 10(3), 1503–1526, doi:<https://doi.org/10.5194/essd-10-1503-2018>, 2018.
- 1045 Scafidi, D., Barani, S., De Ferrari, R., Ferretti, G., Pasta, M., Pavan, M., ... & Turino, C.: Seismicity of Northwestern Italy during the last 30 years. *Journal of Seismology*, 19(1), 201–218, 2015.
- 1050 Schmid, S. M., Fügenschuh, B., Kissling, E. and Schuster, R.: Tectonic map and overall architecture of the Alpine orogen, *Eclogae Geol. Helvetiae*, 97(1), 93–117, doi:10.1007/s00015-004-1113-x, 2004.
- Schwartz, S., Guillot, S., Tricart, P., Bernet, M., Jourdan, S., Dumont, T. and Montagnac, G.: Source tracing of detrital serpentinite in the Oligocene molasse deposits from the western Alps (Barrême basin): implications for relief formation in the internal zone, *Geol. Mag.*, 149(5), 841–856, doi:10.1017/S0016756811001105, 2012.

- 1055 Serpelloni, E., Anzidei, M., Baldi, P., Casula, G. and Galvani, A.: Crustal velocity and strain-rate fields in Italy and surrounding regions: new results from the analysis of permanent and non-permanent GPS networks, *Geophys. J. Int.*, 161(3), 861–880, doi:10.1111/j.1365-246X.2005.02618.x, 2005.
- 1060 Serpelloni, E., Vannucci, G., Pondrelli, S., Argnani, A., Casula, G., Anzidei, M., Baldi, P. and Gasperini, P.: Kinematics of the Western Africa-Eurasia plate boundary from focal mechanisms and GPS data, *Geophys. J. Int.*, 169(3), 1180–1200, doi:10.1111/j.1365-246X.2007.03367.x, 2007.
- 1065 Serpelloni, E., Faccenna, C., Spada, G., Dong, D. and Williams, S. D. P.: Vertical GPS ground motion rates in the Euro-Mediterranean region: New evidence of velocity gradients at different spatial scales along the Nubia-Eurasia plate boundary, *J. Geophys. Res. Solid Earth*, 118(11), 6003–6024, doi:10.1002/2013JB010102, 2013.
- 1070 Solarino, S., Malusà, M. G., Eva, E., Guillot, S., Paul, A., Schwartz, S., Zhao, L., Aubert, C., Dumont, T., Pondrelli, S., Salimbeni, S., Wang, Q., Xu, X., Zheng, T. and Zhu, R.: Mantle wedge exhumation beneath the Dora-Maira (U)HP dome unravelled by local earthquake tomography (Western Alps), *Lithos*, 296–299, 623–636, doi:10.1016/j.lithos.2017.11.035, 2018.
- Spada, M., Bianchi, I., Kissling, E., Agostinetti, N. P. and Wiemer, S.: Combining controlled-source seismology and receiver function information to derive 3-D Moho topography for Italy, *Geophys. J. Int.*, 194(2), 1050–1068, doi:10.1093/gji/ggt148, 2013.
- 1075 Stampfli, G., Mosar, J., Marquer, D., Marchant, R., Baudin, T. and Borel, G.: Subduction and obduction processes in the Swiss Alps, *Tectonophysics*, 296(1–2), 159–204, 1998.
- Sternai, P., Herman, F., Champagnac, J.-D., Fox, M., Salcher, B. and Willett, S. D.: Pre-glacial topography of the European Alps, *Geology*, 40(12), 1067–1070, doi:10.1130/G33540.1, 2012.
- 1080 Sternai, P., Sue, C., Husson, L., Serpelloni, E., Becker, T. W., Willett, S. D., Faccenna, C., Di Giulio, A., Spada, G., Jolivet, L., Valla, P., Petit, C., Nocquet, J.-M., Walpersdorf, A. and Castelltort, S.: Present-day uplift of the European Alps: Evaluating mechanisms and models of their relative contributions, *Earth-Sci. Rev.*, 190, 589–604, doi:10.1016/j.earscirev.2019.01.005, 2019.
- 1085 Sue, C. and Tricart, P.: Late alpine brittle extension above the Frontal Pennine Thrust near Briançon, western Alps, *Eclogae Geol. Helvetiae*, 92(2), 171–181, 1999.
- Sue, C. and Tricart, P.: Neogene to ongoing normal faulting in the inner western Alps: A major evolution of the late alpine tectonics, *Tectonics*, 22(5), doi:10.1029/2002TC001426, 2003.
- 1090 Sue, C., Thouvenot, F., Fréchet, J. and Tricart, P.: Widespread extension in the core of the western Alps revealed by earthquake analysis, *J. Geophys. Res. Solid Earth*, 104(B11), 25611–25622, doi:10.1029/1999JB900249, 1999.
- 1095 Sue, C., Grasso, J. R., Lahaie, F. and Amitrano, D.: Mechanical behavior of western alpine structures inferred from statistical analysis of seismicity, *Geophys. Res. Lett.*, 29(8), 65-1-65–4, doi:10.1029/2001GL014050, 2002.

- Sue, C., Delacou, B., Champagnac, J.-D., Allanic, C. and Burkhard, M.: Aseismic deformation in the Alps: GPS vs. seismic strain quantification, *Terra Nova*, 19(3), 182–188, doi:10.1111/j.1365-3121.2007.00732.x, 2007a.
- 1100 Sue, C., Delacou, B., Champagnac, J.-D., Allanic, C., Tricart, P. and Burkhard, M.: Extensional neotectonics around the bend of the Western/Central Alps: an overview, *Int. J. Earth Sci.*, 96(6), 1101–1129, doi:10.1007/s00531-007-0181-3, 2007b.
- Swiss Seismological Service (SED) At ETH Zurich. *National Seismic Networks of Switzerland*. ETH Zürich. 1983 <https://doi.org/10.12686/sed/networks/ch>
- 1105 Thouvenot, F. and Fréchet, J.: SEISMICITY ALONG THE NORTHWESTERN EDGE OF THE ADRIA MICROPLATE, in *The Adria Microplate: GPS Geodesy, Tectonics and Hazards*, edited by N. Pinter, G. Gyula, J. Weber, S. Stein, and D. Medak, pp. 335–349, Springer Netherlands, Dordrecht., 2006.
- 1110 Thouvenot, F., Fréchet, J., Guyoton, F., Guiguet, R. and Jenatton, L.: Sismalp: an automatic phone-interrogated seismic network for the western Alps, *Cah. Cent. Eur. Géodynamique Séismologie*, 1(1), 10, 1990.
- Thouvenot, F., Fréchet, J., Jenatton, L. and Gamond, J.-F.: The Belledonne Border Fault: identification of an active seismic strike-slip fault in the western Alps, *Geophys. J. Int.*, 155(1), 174–192, doi:10.1046/j.1365-246X.2003.02033.x, 2003.
- 1115 Thouvenot, F., Jenatton, L. and Sanchez, O.: Région Alpes: Contribution OSUG, Annexe A-V, 94-123., 2013.
- Tricart, P.: From passive margin to continental collision; a tectonic scenario for the Western Alps, *Am. J. Sci.*, 284(2), 97–120, 1984.
- 1120 Vavryčuk, V.: Iterative joint inversion for stress and fault orientations from focal mechanisms, *Geophys. J. Int.*, 199(1), 69–77, doi:10.1093/gji/ggu224, 2014.
- Vernant, P., Hivert, F., Chéry, J., Steer, P., Cattin, R. and Rigo, A.: Erosion-induced isostatic rebound triggers extension in low convergent mountain ranges, *Geology*, 41(4), 467–470, doi:10.1130/G33942.1, 2013.
- 1125 Walpersdorf, A., Sue, C., Baize, S., Cotte, N., Bascou, P., Beauval, C., Collard, P., Daniel, G., Dyer, H., Grasso, J.-R., Hautecoeur, O., Helmstetter, A., Hok, S., Langlais, M., Menard, G., Mousavi, Z., Ponton, F., Rizza, M., Rolland, L., Souami, D., Thirard, L., Vaudey, P., Voisin, C. and Martinod, J.: Coherence between geodetic and seismic deformation in a context of slow tectonic activity (SW Alps, France), *J. Geodyn.*, 85, 58–65, doi:10.1016/j.jog.2015.02.001, 2015.
- 1130 Walpersdorf, A., Pinget, L., Vernant, P., Sue, C., Deprez, A. and the RENAG team: Does Long-Term GPS in the Western Alps Finally Confirm Earthquake Mechanisms?, *Tectonics*, 37(10), 3721–3737, doi:10.1029/2018TC005054, 2018.
- 1135 Smith, W. H. F., & Wessel, P. : Gridding with continuous curvature splines in tension. *Geophysics*, 55(3), 293-305, 1990.

- 1140 Zhao, L., Paul, A., Solarino, S., Aubert, C., Zheng, T., Salimbeni, S., Guillot, S., Wang, Q., Ai, Y., Zangelmi, P., He, Y., Lainé, R., Chen, L., Xu, W., Lin, W., Margheriti, L., Pondrelli, S. and Zhu, R.: First results of a new seismic profile across the southwestern Alps, CIFALPS, , 15, EGU2013-6436, 2013.
- Zhao, L., Paul, A., Guillot, S., Solarino, S., Malusà, M. G., Zheng, T., Aubert, C., Salimbeni, S., Dumont, T., Schwartz, S., Zhu, R. and Wang, Q.: First seismic evidence for continental subduction beneath the Western Alps, *Geology*, 43(9), 815–818, doi:10.1130/G36833.1, 2015.
- 1145 Zhao, L., Paul, A., Solarino, S., & RESIF. *Seismic network YP: CIFALPS temporary experiment (China-Italy-France Alps seismic transect)* [Data set]. RESIF - Réseau Sismologique et géodésique Français. 2016. <https://doi.org/10.15778/RESIF.YP2012>
- 1150 Zhao, L., Paul, A., Malusà, M. G., Xu, X., Zheng, T., Solarino, S., ... & Zhu, R. : Continuity of the Alpine slab unraveled by high-resolution P wave tomography, *Journal of Geophysical Research: Solid Earth*, 121(12), 8720-8737, 2016