

# Structural studies in active caldera geothermal systems. Reply to Comment on “Estimating the depth and evolution of intrusions at resurgent calderas: Los Humeros (Mexico)” by Norini and Groppelli (2020).

Stefano Urbani<sup>1</sup>, Guido Giordano<sup>1,2</sup>, Federico Lucci<sup>1</sup>, Federico Rossetti<sup>1</sup>, ~~Valerio Acciolla<sup>1</sup>~~, Gerardo Carrasco- Núñez<sup>3</sup>

<sup>1</sup>Dipartimento di Scienze, Università degli Studi Roma Tre, Largo S.L. Murialdo 1, I-00146 Roma, Italy

<sup>2</sup>CNR - IGAG Montelibretti, Roma

<sup>3</sup>Centro de Geociencias, Universidad Nacional Autónoma de México, Campus UNAM Juriquilla, 76100, Queretaro, Mexico

Correspondence to: stefano.urbani88@gmail.com

**Abstract** Structural studies in active caldera systems are widely used in geothermal exploration to reconstruct volcanological conceptual models. Active calderas are difficult settings to perform such studies mostly because of the highly dynamic environment, dominated by fast accumulation of primary and secondary volcanic deposits, the variable and transient rheology of the shallow volcanic pile, and the continuous feedbacks between faulting, secondary porosity creation and geothermal fluid circulation/alteration/cementation that tend to obliterate the tectonic deformation structures. In addition, deformation structures can be also caused by near- and far-field stress regimes, which include magmatic intrusions at various depths (~~volumes and rates~~), the evolving topography and regional tectonics. A lack of consideration of all these factors may severely underpin the reliability of structural studies. By rebutting and providing a detailed discussion of all the points raised by the comment of Norini and Groppelli (2020) to the Urbani et al. (2020) paper, we take the opportunity to specify the scientific rationale of our structural fieldwork and strengthen its relevance for geothermal exploration/exploitation in active caldera geothermal systems in general, and, particularly, for the Holocene history of deformation and geothermal circulation in the Los Humeros caldera. At the same time, we identify several major flaws in the approach and results presented in Norini and Groppelli (2020), such as: (1) lack of an appropriate ranking of the deformation structures considering an inventory method for structural analysis; (2) misinterpretation and misquoting of Urbani et al. (2020) and other relevant scientific literature; and (3) irrelevant and contradictory statements within their comment. -

## 1 Introduction

Structural studies in active calderas provide key elements for the exploration of geothermal systems and greatly contribute to the development of conceptual models for their exploitation. We herein reply to the comment by Norini and Groppelli (2020) (~~hereafter referred to as Norini and Groppelli (2020)~~) on our paper Urbani et al. (2020) entitled “Estimating the depth and evolution of intrusions at resurgent calderas: Los Humeros (Mexico)”, giving us the opportunity to better further discuss our approach, results and the proposed reconstruction of the Holocene volcano-tectonic evolution of the Los Humeros Volcanic Complex (LHVC; Mexico) and ~~their~~ its relevance for understanding of the active geothermal system.

## 2 Reply to the criticism raised in the comment

The Norini and Groppelli (2020N&G2020’)s criticism ~~on~~ of the Urbani et al. (2020) paper concentrates on revolves around three main aspects: (1) supposed poor-lack of structural field data and supposed geometric and structural inconsistency between the Holocene deformation and the proposed subsurface model; (2) supposed lack of validation of the obtained results with those available from well-logs data; and (3) supposed contradictions with the available stratigraphic reconstruction and radiometric ages.

Here follows a point-by-point discussion of the critical points raised in [Norini and Groppelli \(2020\)](#)~~N&G2020~~.

## 2.1 Las Papas and Las Viboras structures: inventory vs. ~~selection-selective~~ method of structural analysis in active volcanic areas

~~Norini and Groppelli (2020)~~ ~~N&G2020~~ question the reinterpretation made by Urbani et al. (2020) of Las Papas and Las Viboras structures as presently inactive morphological scarps, showing small-scale faults in the Cuicuiltic Member ([see Fig. 2 of Norini and Groppelli \(2020\)](#)~~N&G2020~~), ~~They are also critical of the supposedly few data presented and criticizing on the supposed few data presented.~~ In contrast to the inventory method followed by [Norini and Groppelli \(2020\)](#)~~N&G2020~~, where all faults are mixed together without any hierarchy and discussed as unweighted data, in Urbani et al. (2020) we followed a ~~selection-selective~~ method ~~of structural analysis..~~ ~~By using this method-, we -with faults~~ ranked ~~faults~~ adopting the following criteria in the field: (i) the topographic expression of the fault, (ii) the amount of displacement of individual fault strands and/or fault systems; (iii) the along-strike persistence of the fault trace; (iv) ~~the~~ presence of clear kinematic indicators; (v) ~~the~~ presence or absence of associated hydrothermal alteration, and (vi) the relative age with respect to the Holocene intracaldera Cuicuiltic Member fall deposit. ~~Regarding this last criteria, -the-the Cuicuiltic Member latter-beingis assumed-regarded~~ as a reference space-time marker to discriminate ~~faults~~ older or younger than 7.3 ka ~~faults, according due~~ to its well-known age and distribution [within the caldera](#) (Dávila-Harris and Carrasco-Núñez, 2014; Carrasco-Núñez et al., 2017a). Accordingly, in Urbani et al. (2020) we described only selected faults ~~that exhibited~~~~showing~~ clear m-scale offsets, consistent lateral extent and/or evidence of hydrothermal alteration. We therefore strongly reject that our data ~~are-set is~~ poor, because ~~they-it refer-to-the~~~~deals with~~ structures that, based on the above listed criteria, allowed us to discriminate and rank volcano-tectonic and hydrothermal processes, which are instead missed by the inventory method of unweighted fault dataset adopted by [Norini and Groppelli \(2020\)](#)~~N&G2020~~. In terms of geothermal exploration, the faults presented in [Norini and Groppelli \(2020\)](#)~~N&G2020~~ are indeed questionable in terms of relevance. For example, the LH17106 and LH62 outcrops shown in Fig. 2c of [Norini and Groppelli \(2020\)](#)~~N&G2020~~ are in the same location of outcrop LH-08 shown in Fig. 5c of Urbani et al. (2020), where an erosional surface at the top of undeformed and unaltered pyroclastic deposits of the Xoxoctic Tuff, blanketed by the Cuicuiltic Member is clearly visible. Fig. 1a ~~of this reply~~ shows the same outcrop, where the erosional unconformity at the top of the underlying subhorizontal pyroclastics is sutured by the Cuicuiltic Member fall deposits. The large-scale blanketing geometry of the unaltered Cuicuiltic Member fall deposits across the Las Papas scarp is well visible in Fig. 1b ~~of this reply~~. This indicates that Las Papas is currently an inactive morphological scarp without evidence of hydrothermal alteration. Whether or not this scarp was associated in origin (prior to 7.3 ka) with a fault ~~scarp-trace~~ is not evident in the field nor relevant for our study, focused on present-day relationships between faulting and geothermal circulation. Noteworthy, even Norini et al. (2019; see sections 4 and 6.2) raise doubts on the relevance of the Las Papas structure within the Los Humeros geothermal field, suggesting a weak or no connection with the geothermal reservoir. The same holds for the Las Viboras structure.

In our opinion, the small-scale faults shown by [Norini and Groppelli \(2020\)](#)~~N&G2020~~ in their Fig. 2d-e are not at all compelling and may be alternatively interpreted as small-scale normal faults generated by near-field (local) stresses affecting unlithified material (e.g., Wernicke and Birchfiel, 1982; Bridgewater et al., 1985; Branney and Kokelaar, 1994; Gao et al., 2020; Yang and Van Loon, 2016). In particular, Fig. 2d of [Norini and Groppelli \(2020\)](#)~~N&G2020~~ is unclear, whereas ~~their~~ Fig. 2e does not ~~even~~ show any [evidence of](#) displacement of the lower white and black pumice beds, as well as on the upper brown beds, suggesting an intraformational readjustment (Fig. 1c) rather than a fault. (e.g. Van Loon and Wiggers, 1975, 1976; Branney and Kokelaar, 1994). [Norini and Groppelli \(2020\)](#)~~N&G2020~~ fail to discuss any possible

alternative origin for their small-scale faults, which, ~~considering their~~~~considered the~~ location ~~is~~ in an active caldera floor, severely impinges the reliability of the inventory dataset presented in [Norini and Groppelli \(2020\)](#)~~N&G2020~~ and its relevance for geothermal studies. Reinterpreting the small-scale offsets shown in Fig. 2 on [Norini and Groppelli \(2020\)](#)~~N&G2020~~ as minor gravitational structures (i) would justify why they have no connection with the geothermal circulation nor with any thermal anomaly, and (ii) clarifies to the reader why the Urbani et al. (2020) paper instead focused only on faults that were ranked as of first-order importance in terms of displacement, persistence in the field and age of the structurally-controlled [hydrothermal](#) fluid circulation.

In summary, we (i) question the use of the inventory method for structural analysis adopted by [Norini and Groppelli \(2020\)](#)~~N&G2020~~ when applied to active calderas, which may prove to be inappropriate and unable to discriminate ~~between~~ first-order, deep and geothermally relevant, fault systems from small-scale, soft-state deformation structures that are also common in intracaldera domains (e.g., Branney and Kokelaar, 1994); and (ii) consider the ~~selection~~~~selective~~ method of structural analysis used by Urbani et al. (2020) as fully appropriate to rank deformation structures (Fig. 1a-i) when the aim of a structural fieldwork is to characterize the surface deformation related to the recent activity of a caldera, ~~in order~~ to constrain the morphotectonic fingerprints of the resurgence, to evaluate its source and areal extent and, even more importantly, its relevance for the active geothermal system.

## 2.2 Arroyo Grande and Maxtaloya faults: the importance of tracking fluid path migration in space and time

[Norini and Groppelli \(2020\)](#)~~N&G2020~~ state that “*active/fossil alteration doesn’t always allow identifying faults or the age of faulting, because it depends also on their depth, life span of the hydrothermal system, spatial relationships, and fluid paths along primary permeability and faults zones (Bonali et al., 2016; Giordano et al., 2016)*”. [Although geothermal fields may develop also associated with primary porosity \(Hurter and Shellschmidt, 2003\)](#), ~~the~~ the two studies cited by [Norini and Groppelli \(2020\)](#)~~N&G2020~~ are in no way at odds with Urbani et al. (2020). The work of Bonali et al. (2016), on the active tectonics at Copahue (Argentina) points out that active fault systems in volcanic settings are responsible for driving hot fluids to the surface. Similarly, the works of Giordano et al. (2013; 2016) on the Tocomar geothermal field (Puna Plateau, Argentina), investigated the evidence of a geothermal field based of the overlapping distribution of hot springs and active fault systems. —We thank [Norini and Groppelli \(2020\)](#)~~N&G2020~~ for reporting to our attention these two very interesting papers because, along with mainstream literature ([e.g. Karaoglu et al. 2019](#)), they clearly indicate that hydrothermal fluids and associated alteration in volcanic settings are driven/controlled by active fault systems. The relationship between faulting and fluid circulation is well established also in exhumed systems, where it is clear how fault-permeability is affected by the interplay between far-field regional stress field and the near-field stress regime (e.g. Rossetti et al. 2011; Olvera Garcia et al. 2020). Therefore, the cited papers support the proposal of Urbani et al. (2020) to use the distribution and intensity of the hydrothermal alteration within the 7.3 ka Cuicuiltic Member marker beds, that ubiquitously blanket the caldera floor and all the fault scarps, as a valid space-time marker in the field to discriminate active vs. inactive fault segments controlling the upwelling of geothermal fluids (Fig. 1d-i). ~~Concluding, contrary~~~~In contrast~~ to [Norini and Groppelli \(2020\)](#)~~N&G2020~~, we ~~reaffirm~~~~conclude~~ that, in agreement with authoritative literature, hydrothermal alteration follows the space-time distribution of structurally-controlled (fault-induced) secondary permeability pathways and its distribution should be used, along with measured fault displacements, persistence and (relative) age, as an indication of fault activity and ranking for geothermal purposes. At Los Potrerros, the presence of the 7.3 ka Cuicuiltic Member marker bed ~~allowed us to tracked~~~~allows to track~~ the type and intensity of deformation and its association with fluid circulation and alteration in space and time ~~to be tracked~~.

## 2.3 Surface thermal anomalies

123 Norini and Groppelli (2020)~~N&G2020~~ state “The Maxtaloya fault trace is coincident with a sharp thermal anomaly  
124 identified by Norini et al. (2015). Urbani et al. (2020) didn’t consider this positive (warm) anomaly when they discussed  
125 the thermal remote sensing results published by Norini et al. (2015) (Section 5.3 in Urbani et al., 2020)”. This statement  
126 is not correct, because we did discuss the published remote sensing results as clearly written in section 5.3 of Urbani et  
127 al. (2020). Moreover, the sharp and narrow temperature peaks, described by Norini et al. (2015), are spatially coincident  
128 with the Los Humeros and Loma Blanca faults described by Urbani et al. (2020). This scenario is further supported by  
129 are further supported by, are further supported by the recent work of Jentsch et al. (2020; also presented in see also  
130 Deliverable 4.3 of GEMex, 2019a), where soil temperature anomalies ( $T > 43^{\circ}\text{C}$ ) are identified only at Los Humeros and  
131 at Loma Blanca areas, whereas no thermal anomaly is recognized along other sections of the Maxtaloya fault (see Fig. 5a  
132 in Jentsch et al. 2020). We therefore reject the criticism from Norini and Groppelli (2020)~~N&G2020~~, who instead failed  
133 to consider the recent results presented by Jentsch et al. (2020) and Peiffer et al. (2018).

## 134 **2.4 Identification and geometry of uplifted areas: topographic data and structural mapping**

135 Norini and Groppelli (2020)~~N&G2020~~ criticize the location and geometry of the three uplifted areas of Los Humeros,  
136 Loma Blanca and Arroyo Grande identified by Urbani et al. (2020). However, in the topographic profiles across the  
137 bulges shown by Norini and Groppelli (2020) ~~N&G2020~~ in their Fig. 4a-b, the uplifted areas at Loma Blanca, Arroyo  
138 Grande and Los Humeros are well visible and ~~their~~ existence of such bulges is unquestionable. Therefore, it is unclear  
139 on what basis Norini and Groppelli (2020)~~N&G2020~~ question the existence of such uplifted areas. The asymmetry  
140 (Arroyo Grande) and tilt of the uplifted areas (Loma Blanca) detailed by Norini and Groppelli (2020)~~N&G2020~~ are in no  
141 way adversative to the Urbani et al (2020) interpretation. Again, it is unclear why these shapes are reported as  
142 counterproofs. Asymmetric bulges are common characteristics in many volcanic regions worldwide, in resurgent calderas  
143 (e.g. Ischia, Pantelleria, Sierra Negra and Alcedo; Galetto et al. 2017 and references therein) or associated with shallow  
144 intrusions, such as Usu (Goto and Tomiya, 2019), Chaîne de Puys (van Wyk de Vries et al., 2014; Petronis et al 2019),  
145 Bezymianny (Gorshkov, 1959) and Mt St. Helens (Lipman, et al. 1981). Despite being stimulating for future works,  
146 investigation of the exact origin of the bulge shapes was far beyond the scope of Urbani et al. (2020), who, for this reason,  
147 maintained the same initial and simplified geometric configuration for ~~the~~ analogue models. Therefore, the comment  
148 made by Norini and Groppelli (2020)~~N&G2020~~ is not relevant for the discussion presented in Urbani et al. (2020).

### 149 **2.4.1 Apical depression of bulges**

150 The model proposed by Urbani et al. (2020) predicts the formation of an apical depression on the top of a bulge induced  
151 by a shallow intrusion. Norini and Groppelli (2020)~~N&G2020~~ state that the topography of natural bulges identified by  
152 Urbani et al. (2020) does not show well-defined apical depressions in the asymmetric Arroyo Grande and Los Humeros  
153 uplifted areas, contradicting the model results. Analogue modeling in Urbani et al (2020) inject symmetric intrusions, a  
154 condition appropriate for the morphology of the Loma Blanca bulge, where the apical depression is very well evident  
155 (Fig. 2) and measured in the field (Fig. 6f in Urbani et al. 2020). The Arroyo Grande and Los Humeros bulges are instead  
156 asymmetrical, and likely developed as trapdoor uplifts (thus without apical depression) associated with asymmetric  
157 intrusions and with a deformation amount much larger than that at Loma Blanca and that considered in the analogue  
158 models. Therefore, the comment made by Norini and Groppelli (2020)~~N&G2020~~ is incorrect regarding the Loma Blanca  
159 bulge and not relevant in the other two cases, and, consequently, the predictive value of the model proposed by Urbani et  
160 al. (2020) is in no way compromised. Indeed, the experiments were designed to ensure the formation of an apical

~~depression not considering the trapdoor uplift/faulting and; the asymmetric bulges are not directly modeled. therefore not compromising in any way the predictive value of the model proposed in Urbani et al. (2020).~~

#### 2.4.3 Reverse faults bounding uplifted areas

~~Norini and Groppelli (2020)N&G2020~~ state that Urbani et al. (2020) do not provide independent validation of the ~~proposed~~ multiple magmatic intrusion model, such as field evidence of reverse faults predicted by the analogue modeling results. Exposure of faults in active caldera floors depends on many factors: (i) elastic ~~versus-vs.~~ anelastic response to deformation source, its location, intensity and duration, (ii) nucleation depth and ~~surface~~ propagation ~~up to surface and;~~ (iii) ~~rate of burial versus-vs.~~ exhumation rates. Therefore, while reverse faults accompanying both large-scale resurgence and local uplifts are expected by ~~any-analogue~~ models, the scarcity of visible and measurable reverse faulting in no way disproves ~~the hypothesis related to~~ the intrusion of cryptodomes and resurgence (Bonanza, Lipman et al., 2015; Long Valley, Hildreth et al., 2017; Kutcharo, Goto and McPhie, 2019). Therefore, the statement by ~~Norini and Groppelli (2020)N&G2020~~ claiming that the locations of such reverse faults “are a fundamental feature of their model” is incorrect. In addition, ~~Norini and Groppelli (2020)N&G2020~~ show the traces of inferred reverse faults at the periphery of the Loma Blanca bulge, just where the Urbani et al. 2020 model predicts (see Fig. 2), making ~~Norini and Groppelli 2020~~their own statements ~~really unclear~~contradictory.

#### 2.5 Validation of the proposed model: geothermal wells log data

##### 2.5.1 Lithology of intrusions

~~Norini and Groppelli 2020 invoke the thermal profile and the stratigraphy of just one well log (H4 well, drilled on the top of the Loma Blanca bulge) to claim the lack of validation of the models proposed in Urbani et al. (2020)N&G2020 claim the lack of validation of the models proposed in Urbani et al. (2020) also invoking the thermal profile and the stratigraphy of the H4 well drilled on the top of the Loma Blanca bulge.~~ First, we would like to emphasize that the proposed reinterpretation of the subsurface stratigraphy presented in Urbani et al. (2020) is not just based on the H4 well. A great part of section 2 (“Geological-structural setting”) and Figs. 2a-b presented in Urbani et al. (2020) discuss in detail the published data from twelve well logs (including the H4 well log) as presented in Arellano et al. (2003) and in Carrasco-Núñez et al. (2017a, 2017b). The model evaluation of the intrusion depths, as derived from the equation of Brothelande and Merle (2015), are valid within the modelling assumptions and are within the depth range of some rhyolitic-dacitic bodies drilled in geothermal wells, wherein they are simply described texturally as lavas (Carrasco-Núñez et al., 2017b and references therein). The lithologic definition of “lava” is associated with aphanitic to phaneritic textures that are not only restricted to subaerial environments and may be impossible to distinguish from textures of sub-volcanic/hypabyssal bodies. Hypabyssal rocks are characterized by a rapid cooling and their textures are fine grained or glassy, and mostly resemble those of volcanic rocks (Phillpots and Ague, 2009). One of the most famous examples of felsic hypabyssal intrusions in intracaldera ignimbrite deposits is in Long Valley Caldera (California). At Long Valley, the well logs revealed ca. 300 m cumulative thick succession of aphanitic to phyric rhyolitic intrusions emplaced during the post-caldera stage, into the older, ca. 1200 m thick, intracaldera Bishop Tuff (McConnell et al., 1995). We therefore reject the criticism by ~~Norini and Groppelli (2020)N&G2020 only based on uncritical reading of published well log litho-stratigraphies whichas did not understand that the interpretation is based not only on the H-4 well but also on stratigraphic reconstructions derived from 12 published well logs -~~

##### 2.5.2 Geometry of caldera fill



199 The reinterpretation proposed by Urbani et al. (2020) of some of the rhyolitic-dacitic bodies of the Los Potreros subsurface  
 200 as hypabyssal intrusives is not simply based on their lithology, but also on their geometry, stratigraphic position, as well  
 201 as the whole geometry of the caldera fill; all elements neither considered nor discussed in [Norini and Groppelli](#)  
 202 [\(2020\)N&G2020](#). When correlating the stratigraphic well-logs, Urbani et al. (2020) documented (in section 2 at p. 530  
 203 and Fig. 2) the irregular geometry of both the top of the Xaltipan intracaldera ignimbrite and the post-caldera units, as  
 204 well as the lack of a clear topography filling geometry: a stratigraphic setting that can be hardly reconciled with an  
 205 intracaldera setting unless the emplacement of intrusive bodies has occurred in the shallow crust. Noteworthy, the main  
 206 geometric anomalies of the caldera fill appear right in correspondence with the possible location of a felsic intrusion. For  
 207 example, a 600 m-thick rhyolitic-dacitic body showing all the petrographic features of a hypabyssal intrusion is reported  
 208 to the west of Arroyo Grande in the H20 well at 470-1060 m of depth from the surface (see also Carrasco-Núñez et al.  
 209 (2017b). It is located at the top of the pre-caldera andesites, intrudes both the intracaldera and the post-caldera units, and  
 210 shows no lateral continuity. Similar felsic bodies were also drilled in H5, H26, H19 and H25 wells. Furthermore, [Norini](#)  
 211 [and Groppelli \(2020\)N&G2020](#) completely misinterpreted and misquoted a recent work by Cavazos-Alvarez et al. (2020),  
 212 which only deals with the reinterpretation of andesitic layers within the Xaltipan intracaldera ignimbrite (see blue ellipses  
 213 in wells: H10-Fig. 3a; H20-Fig. 3b; and H42-Fig. 3e) and does not question the interpretation of the rhyolite bodies  
 214 proposed by Urbani et al.; [\(2020\)](#) as small intrusions located above and below the Xaltipan ignimbrite. With regard to  
 215 these rhyolite bodies, Cavazos-Alvarez et al. (2020) not only confirm their existence in wells H20 and H26 (red ellipses  
 216 in Figs. 3b and 3d [of this reply](#)), but also identify previously unrecognized (i) ca. 400 m cumulative thick rhyolite layers  
 217 (between ca. 500-1000 m below the surface) in well H25 (Fig. 3c), and (ii) a ca. 50 m thick rhyolite layers (between 850-  
 218 900 m below the surface) in well H42 (Fig. 3e). The depths of these rhyolitic layers are compatible with the estimated  
 219 intrusion depth of  $425 \pm 170$  m proposed by Urbani et al. (2020) for the emplacement of small cryptodomes within the  
 220 volcanic sequence. It should be emphasized that the presence of rhyolitic bodies within the volcanic sequence in the Los  
 221 Potreros intracaldera domain is also reported in the geological cross-section included in the recently updated geological  
 222 map of Los Humeros (Carrasco-Núñez et al. 2017a). Summarizing, we have demonstrated the agreement between the  
 223 works of Carrasco-Núñez et al. (2017a, 2017b), Urbani et al. (2020) and Cavazos-Alvarez et al. (2020) for what concerns  
 224 the subsurface stratigraphy of the Los Potreros intracaldera domain, and therefore we reject the criticism of [Norini and](#)  
 225 [Groppelli \(2020\)N&G2020](#).

### 226 2.5.3 Thermal gradient

227 The statement by [Norini and Groppelli \(2020\)N&G2020](#) on the absence of an in-depth sharp increase of the temperature  
 228 and geothermal gradient in the H4 well (considered to remain constant at ca. 20 °C/km; see Fig. 3d in [Norini and Groppelli](#)  
 229 [\(2020\)N&G2020](#)) is not correct. The existing published in-depth temperature profiles of the H4 well (Fig. 4a; after Torres-  
 230 Rodriguez, 1995; Prol-Ledesma, 1988, 1998; Martinez-Serrano, 2002) show a clear sharp temperature increase (+150 °C)  
 231 in less than 200 m, up to 300 °C at 1000 m below the surface. The temperature profile is then characterized by a  
 232 progressive temperature decrease down to ca. 200 °C at 2000 m depth. Such temperature profile is not observed in the  
 233 very close H43 well (Fig. 4a, after Lorenzo-Pulido, 2008). Significantly, on the top of the Loma Blanca bulge, very close  
 234 to the H4 well, Norini et al. (2019) and also [Norini and Groppelli \(2020\)N&G2020](#) report “a warm normal fault” in the  
 235 Cuicuiltic Member deposits and documented it through a thermal image (Fig. 5b in Norini et al., 2019; Fig. 3 in [Norini](#)  
 236 [and Groppelli \(2020\)N&G2020](#), Figs. 1e-g in this reply), confirming the active thermal activity in the Loma Blanca area.  
 237 Furthermore, 300 m away from the H4 well, at the southern termination of the Loma Blanca fault, Jentsch et al. (2020)

238 measured the highest surface temperature (91.3 °C) of the whole Los Potreros caldera, corresponding to an active solfatara  
239 (Figs. 1h-I, 4b).

## 240 **2.6 Validation of the proposed model: stratigraphic and radiometric data**

### 241 *2.6.1 Age of the domes along Los Humeros fault*

242 [Norini and Groppelli \(2020\)](#)~~N&G2020~~ question the presence of domes younger than 7.3 ka based on stratigraphic and  
243 radiometric data presented in Carrasco-Núñez et al. (2018). Fig. 5 shows, in agreement with the geological map of  
244 Carrasco-Núñez et al. (2017a), a perspective view of the Los Potreros caldera floor across the Maxtaloya and Los  
245 Humeros faults. The images show the presence of lava domes and flows of variable composition both covered by and  
246 emplaced above the 7.3 ka Cuicuiltic Member. Older lavas include those associated with the “Resurgent Phase” (50.7-  
247 44.8 ka; “Qr1”) in Carrasco-Núñez et al., (2018 and references therein). Younger lavas show absence of the 7.3 ka  
248 Cuicuiltic member cover and a morphology poorly or unaffected by evidence of faulting. It should be noted in Fig. 5 that  
249 the Obsidian dome is also the site of a sample whose magmatic zircon crystallization age was U-Th dated at 44.8 ka in  
250 Carrasco-Nunez et al. 2017. At the same time, the dome is largely not covered by the Cuicuiltic member. As the dated  
251 sample was taken at the base of the dome, this can be interpreted in various ways: one is that the dome is polyphased and  
252 its upper part is younger than 7.3 ka resting above the Cuicuiltic member; the other is that the dome was exhumed after  
253 7.3ka. The emplacement/exhumation of the obsidian dome and the nearby faulting of the Cuicuiltic member by tens of  
254 meters of displacement at the site of the Los Humeros fault indicates that this section of the fault was active later than 7.3  
255 ka. By contrast, the fault displacement drastically reduces southward along the Maxtaloya fault. This in our opinion  
256 supports our interpretation of the Maxtaloya-Los Humeros faults as segmented and diachronous during Holocene, in  
257 agreement with the Urbani et al 2020 interpretation. We therefore conclude that field evidence supports Urbani et al 2020  
258 in documenting the presence of lava bodies younger than 7.3 ka issued along the Maxtaloya-Los Humeros faults.

### 259 *2.6.2 Recent history of caldera floor uplift*

260 [Norini and Groppelli \(2020\)](#)~~N&G2020~~ misquote Urbani et al. (2020), attributing to them the interpretation of a northward  
261 shift in volcanic activity within the Los Potreros caldera, which was neither declared nor intended in the paper. Urbani et  
262 al (2020) simply summarize field evidence stating “*the recent (post-caldera collapse) uplift in the Los Potreros caldera*  
263 *moved progressively northwards, from the south and north-eastern sector of the caldera towards the north along the Los*  
264 *Humeros and Loma Blanca scarps*”. Urbani et al. (2020) did not discuss the causes of such northward shift and even less  
265 attributed it to a shift in “the volcanic feeding system” as erroneously and unjustifiably reported by [Norini and Groppelli](#)  
266 [\(2020\)](#)~~N&G2020~~. The fate of a magma intrusion, i.e. whether it will erupt or stop in the crust, depends on many factors,  
267 such as its buoyancy (density contrast with host rocks), the initial gas content, the rise speed and style of decompression-  
268 degassing, the rheology of the magma and of the intruded crust, including its layering, structure and so forth. The evolution  
269 over time and space of intrusions in a caldera may see different phases and have many different causes, partly depending  
270 on feedbacks existing between the evolving configuration of the magmatic plumbing system and the evolving rheology  
271 and structure of the caldera roof rocks. ~~At Los Humeros the~~ The plumbing system of the last 10 ka at Los Humeros has  
272 been reconstructed in detail by Lucci et al (2020). This study documents a multistorey magmatic complex, which allows  
273 the eruption along the Los Potreros caldera floor of both deep-sourced (>30 km) olivine basalts and shallow-differentiated  
274 (< 3 km) felsic trachytes and rhyolites. The results of Lucci et al. (2020), curiously neither cited nor discussed by [Norini](#)  
275 [and Groppelli \(2020\)](#)~~N&G2020~~, highlight the absence of the classic large volume, single magma chamber and suggest  
276 that the activation of magma sources at different depths appear not to have followed any specific pattern during the  
277 Holocene. A corollary of the present absence below Los Humeros of a single large magma chamber/crystal mush able to

form a rheological barrier to the rise of basalts directly from lower crustal depths severely impinges upon the model of classic resurgence supported by [Norini and Groppelli \(2020\)](#)~~N&G2020~~, which requires the existence of a voluminous viscous layer accommodating magma recharge and acting as a pressure source for resurgence (Galetto et al. 2017).

### 3. Summary and implications for the Los Humeros geothermal system

Understanding the anatomy of magma plumbing systems of active volcanic systems, from deeper reservoirs to subsurface ephemeral batches, is crucial to define temperature, depth and geometry of the heat sources for geothermal exploration. The Pleistocene-Holocene Los Humeros Volcanic Complex ([LHMVC](#)), located in the eastern Trans-Mexican Volcanic Belt (central Mexico), represents one of the most important exploited geothermal fields in Mexico, with ca. 95 MW of produced electricity. Geological investigations at [LHMVC](#) started at the end of the '70 of the last century and culminated with the production of (i) the first comprehensive geological map (Fig. 6a; after Ferriz and Mahood (1984), (ii) a structural map of the intracaldera domain (Fig. 6b after Alcantara et al., 1988), (iii) the proposal of a petrological conceptual model of the plumbing system made of a single voluminous (ca. 1200 km<sup>3</sup>) melt-dominated and zoned magma chamber at shallow depths (ca. 5 km, Fig. 6c, after Verma, 1985), and (iv) the proposal of an inflation-deflation caldera episodic/cyclic model (Fig. 6d, after Campos-Enriquez and Arredondo-Fragoso, 1992) connected to the activity of the single voluminous conventional magma chamber of Verma (1985). Since these main studies, up to the most recent published works, the understanding of the Los Humeros volcanic complex has been incremental, never questioning the consolidated model of the single zoned magma chamber where all petrologic, volcanologic and deformation processes originate (i.e., Ferriz and Mahood, 1984; Alcantara et al., 1988; Verma, 1985; Campos-Enriquez and Arredondo-Fragoso, 1992). Structural work by Norini et al. (2015, 2019), produced updates and refined versions (Figs. 6e and 6f) of the original structural map by Alcantara et al. (1988). Based on the assumption of the existence of an active single voluminous magma chamber as proposed in the early '1980s (Verma, 1985), post-caldera deformation has been interpreted uniquely as due to a classic mechanism of resurgence (e.g., Fig. 6g after Norini et al., 2019) that much (or completely) resemble the first proposal of Campos-Enriquez and Arredondo-Fragoso (1992). However, such conceptual model is now under stress as the geothermal anomalies appear very localized, mainly confined along the NNW-SSE-trending "Maxtaloya-Los Humeros-Loma Blanca-Los Conejos" corridor and corresponding to the almost unique, narrow thermal anomaly recognized within the Los Potreros caldera (Norini et al., 2015; Peiffer et al., 2018<sup>9</sup>; Jentsch et al., 2020), rapidly declining away. This geothermal configuration is reflected in the [relatively](#) low number of productive geothermal wells (ca. 25 out of ca. 60; Gutierrez-Negrín et al. 2019; 2020) but is difficult to reconcile with the existence of a single, deep-seated, large-volume magmatic source that should instead generate widespread and sustained thermal anomalies in the caldera floor, such as in active resurgent calderas like Ischia (Carlino et al., 2014).

A step-change of paradigm in the reconstruction of the Holocene magmatic plumbing system at Los Humeros has been proposed in Lucci et al. (2020) ~~and GEMex (2019c), which nevertheless ~~is~~their ~~important~~ implications for the understanding of the present-day geothermal system ~~it was~~were (not even cited by Norini and Groppelli (2020)~~N&G2020) and GEMex (2019c), with important implications for the understanding of the present-day geothermal system. Lucci et al. (2020) carried out a thermobarometric study of all exposed Holocene lavas, demonstrating that the scattered intracaldera monogenetic activity reflects the ascent of magmas from basaltic to trachytic in composition from sources located at depths comprised between > 30 km (basalts) to < 3 km (trachytes), and for variably evolved compositions, with complex histories of ascent and stalling at various depths, depicting a multistorey plumbing system (e.g. Cashman and Giordano, 2014; Cashman et al. 2017; Sparks et al. 2019). This innovative reconstruction of the plumbing system suggests that the large volume magma chamber at 5 km depth that produced the caldera collapses at the time of the eruption of the



318 Xaltipan ignimbrite (164 ka) and Zaragoza ignimbrite (69 ka) does not exist anymore as a single melt-dominated volume,  
319 allowing the rise to surface of mantle-derived magmas as well as differentiation processes at various depths of small  
320 batches of magma through the entire crust. Urbani et al. (2020) performed a structural fieldwork based on a selective  
321 method approach combined with analogue models, showing that, at least during the Holocene, the classic resurgence  
322 model (e.g. Norini et al. 2019) does not explain the fault-ranks and the spatio-temporal evolution of the  
323 deformation/alteration. This change of paradigm at Los Humeros implies: (i) the inadequacy of the hypothesis of a single,  
324 large and voluminous shallow magmatic chamber homogeneously distributed beneath the caldera; (ii) the proposal of an  
325 innovative scenario, characterized by a complex magmatic plumbing system vertically distributed across the entire crust,  
326 from a deeper residence zone for basalts to a shallower magmatic plexus made of small single-charge ephemeral pockets  
327 of heterogeneous magmas localized beneath the Los Humeros nested caldera (Fig. 7a, after Lucci et al., 2020), and (iii)  
328 the interpretation of the recent deformation at Los Humeros volcanic complex not as a classical resurgence associated  
329 with the bulk inflation of a deep magma reservoir, but as the response to the ascent and emplacement of multiple, small-  
330 volume magma batches at shallow crustal conditions (< 1km depth) (Fig. 7b, after Urbani et al., 2020). These results bear  
331 important consequences on the geothermal exploration/exploitation and siting of future geothermal wells, where shallow  
332 magma bodies can act as scattered and localized short-lived heat sources complicating the pattern of isotherms related to  
333 deeper reservoirs. At the same time, the evidence of absence during the Holocene of an actively recharged large and melt-  
334 dominated magma chamber located at 5 km depth (i.e. the Xaltipan/Zaragoza magma chamber) may help understanding  
335 the localized nature of the thermal anomalies at Los Humeros.

~~336 We are aware that our studies are valid within the framework of the data available and assumptions made, and that further  
337 investigations in the Los Humeros caldera are necessary to confirm both the descriptive/predictive ability and limits of  
338 our proposed models. However, we not only reject the hard judgments expressed by N&G2020 on Urbani et al. (2020),  
339 but also think to have shown the many methodological and logical flaws in the scientific rationale followed by N&G2020.  
340 In conclusion, while we thank N&G2020 for having given us the opportunity to better express our thoughts and defend  
341 our model, we would also like to underline that it would have been less surprising and much more appropriate to discuss  
342 this matter in any of the many conferences and workshops made available within the framework of our common three-  
343 years long GEMEX Project, including the co-authoring of the D3.2 final report (GEMEX, 2019c, with full reference  
344 therein to Urbani et al. 2020 contents and results). This would have offered the opportunity to us and to the entire GEMEX  
345 community to make further progresses based on an open and public discussion of controversial issues rather than giving  
346 a (misleading) formal impression, after its ending, that this important Project has taken uncertain paths.~~

#### 348 **Data availability**

349 All the data presented in this paper are available upon request.

#### 350 **Author contributions**

351 All the authors contributed equally to the preparation of this reply.

#### 352 **Competing interests**

353 The authors declare that they have no conflict of interest.

#### 354 **Acknowledgements**

355 The original research (Urbani et al. 2020) was funded the European Union Horizon 2020 GEMex project (grant agreement  
356 no. 727550) and by the Mexican Energy Sustainability fund CONACYT-SENER, WP 4.5 of the project 2015-04-268074.

#### 357 **References**

Alcantara, A. R., Chávez-Cortés, M. M., and Prol-Ledesma, R. M.: Remote sensing applied to geothermal exploration of Los Humeros geothermal field, Mexico., *Proc. 10<sup>th</sup> New Zealand Geothermal Workshop 1988*, 351-354, 1988.

Arellano, V. M., García, A., Barragán, R. M., Izquierdo, G., Aragón, A., and Nieva, D.: An updated conceptual model of the Los Humeros geothermal reservoir (Mexico), *J. Volcanol. Geoth. Res.*, 124, 67–88, [https://doi.org/10.1016/S0377-0273\(03\)00045-3](https://doi.org/10.1016/S0377-0273(03)00045-3), 2003.

Bonali F.L., Corazzato C., Bellotti F., and Groppelli G.: Active Tectonics and Its Interactions with Copahue Volcano. In: Tassi F., Vaselli O., and Caselli A. (eds) *Copahue Volcano. Active Volcanoes of the World*. Springer, Berlin, Heidelberg. 210, 23-45, [https://doi.org/10.1007/978-3-662-48005-2\\_2](https://doi.org/10.1007/978-3-662-48005-2_2), 2016.

Branney, M. J., and Kokelaar, P.: Volcanotectonic faulting, soft-state deformation, and rheomorphism of tuffs during development of a piecemeal caldera, English Lake District. *Geol. Soc. Am. Bull.*, 106(4), 507-530, 1994.

Bridgwater, J., Foo, W. S., and Stephens, D. J.: Particle mixing and segregation in failure zones—theory and experiment. *Powder Technol.*, 41(2), 147-158, 1985.

Brothelande, E. and Merle, O.: Estimation of magma depth for resurgent domes: An experimental approach, *Earth Planet. Sc. Lett.*, 412, 143–151, <https://doi.org/10.1016/j.epsl.2014.12.011>, 2015.

Burchardt, S., Mattsson, T., Palma, J. O., Galland, O., Almqvist, B., Mair, K., Jerram, D.A., Hammer, Ø., and Sun, Y.: Progressive growth of the Cerro Bayo cryptodome, Chachahuén volcano, Argentina—Implications for viscous magma emplacement. *J. Geophys. Res-Sol. Ea.*, 124, 7934–7961. <https://doi.org/10.1029/2019JB017543>, 2019.

Calcagno, P., Evanno, G., Trumpy, E., Gutiérrez-Negrín, L. C., Macías, J. L., Carrasco-Núñez, G., and Liotta, D.: Preliminary 3-D geological models of Los Humeros and Acoculco geothermal fields (Mexico) – H2020 GEMex Project, *Adv. Geosci.*, 45, 321-333, <https://doi.org/10.5194/adgeo-45-321-2018>, 2018.

Calcagno, P., Evanno, G., Trumpy, E., Gutiérrez-Negrín, L. C., Norini, G., Macías, J. L., Carrasco-Núñez, G., Liotta, D., Garduño-Monroy, V. H., Páll Hersir, G., Vaessen, L., and Evanno, G.: Updating the 3D Geomodels of Los Humeros and Acoculco Geothermal Systems (Mexico) – H2020 GEMex Project Proceedings, *World Geothermal Congress 2020*, Reykjavik, Iceland, April 26 – May 2, 2020, p.12, 2020.

Campos-Enriquez, J. O., and Arredondo-Fragoso, J. J.: Gravity study of Los Humeros caldera complex, Mexico: Structure and associated geothermal system. *J. Volcanol. Geoth. Res.*, 49(1-2), 69-90, 1992.

Carlino, S., Somma, R., Troiano, A., Di Giuseppe, M. G., Troise, C., and De Natale, G.: The geothermal system of Ischia Island (southern Italy): critical review and sustainability analysis of geothermal resource for electricity generation, *Renew. Energ.*, 62, 177-196, <https://doi.org/10.1016/j.renene.2013.06.052>, 2014.

Carrasco-Núñez, G., Hernández, J., De León, L., Dávila, P., Norini, G., Bernal, J. P., Jicha, B., Navarro, M., and López-Quiroz, P.: Geologic Map of Los Humeros volcanic complex and geothermal field, eastern Trans-Mexican Volcanic Belt/Mapa geológico del complejo volcánico Los Humeros y campo geotérmico, sector oriental del Cinturón Volcánico Trans-Mexicano, *Terradigitalis*, 1, 1–11, <https://doi.org/10.22201/igg.terradigitalis.2017.2.24.78>, 2017a.

Carrasco-Núñez, G., López-Martínez, M., Hernández, J., and Vargas, V.: Subsurface stratigraphy and its correlation with the surficial geology at Los Humeros geothermal field, eastern Trans-Mexican Volcanic Belt, *Geothermics*, 67, 1–17, <https://doi.org/10.1016/j.geothermics.2017.01.001>, 2017b.

Carrasco-Núñez, G., Bernal, J. P., Davila, P., Jicha, B., Giordano, G., and Hernández, J.: Reappraisal of Los Humeros volcanic complex by new U/Th zircon and <sup>40</sup>Ar/<sup>39</sup>Ar dating: Implications for greater geothermal potential, *Geochem. Geophys. Geosy.*, 19, 132–149, <https://doi.org/10.1002/2017GC007044>, 2018.

Cashman, K. V. and Giordano, G.: Calderas and magma reservoirs, *J. Volcanol. Geoth. Res.*, 288, 28–45, <https://doi.org/10.1016/j.jvolgeores.2014.09.007>, 2014.

399 Cashman, K. V., Sparks, R. S. J., and Blundy, J. D.: Vertically extensive and unstable magmatic systems: a unified view  
400 of igneous processes, *Science*, 355(6331), <https://doi.org/10.1126/science.aag3055>, 2017.

401 Cavazos-Álvarez, J. A., and Carrasco-Núñez, G.: Anatomy of the Xáltipan ignimbrite at Los Humeros Volcanic Complex;  
402 the largest eruption of the Trans-Mexican Volcanic Belt: *J. Volcanol. Geoth. Res.*, 392, 106755.  
403 <https://doi.org/10.1016/j.jvolgeores.2019.106755>, 2020.

404 Cavazos-Álvarez, J. A., Carrasco-Núñez, G., Dávila-Harris, P., Peña, D., Jáquez, A., and Arteaga, D.: Facies variations  
405 and permeability of ignimbrites in active geothermal systems; case study of the Xáltipan ignimbrite at Los Humeros  
406 Volcanic Complex. *J. S. Am. Earth Sci.*, 104, 102810. <https://doi.org/10.1016/j.jsames.2020.102810>, 2020.

407 Cedillo, F.: Geología del subsuelo del campo geotermico de Los Humeros, Puebla. Internal Report HU/RE/03/97,  
408 Comision Federal de Electricidad, Gerencia de Proyectos Geotermoelectricos, Residencia Los Humeros, Puebla, 30 pp.,  
409 1997.

410 Charlier, B., and Zellmer, G.: Some remarks on U–Th mineral ages from igneous rocks with prolonged crystallisation  
411 histories. *Earth Planet. Sc. Lett.*, 183(3-4), 457-469, [https://doi.org/10.1016/S0012-821X\(00\)00298-3](https://doi.org/10.1016/S0012-821X(00)00298-3), 2000.

412 Dávila-Harris, P. and Carrasco-Núñez, G.: An unusual syn-eruptive bimodal eruption: The Holocene Cuicuiltic Member  
413 at Los Humeros caldera, Mexico, *J. Volcanol. Geoth. Res.*, 271, 24–42, <https://doi.org/10.1016/j.jvolgeores.2013.11.020>,  
414 2014.

415 DeRita, D., Giordano, G., and Cecili, A.: A model for submarine rhyolite dome growth: Ponza Island (central Italy). *J.*  
416 *Volcanol. Geoth. Res.*, 107(4), 221-239, 2001.

417 de Saint-Blanquat, M., Habert, G., Horsman, E., Morgan, S.S., Tikoff, B., Launeau, P., Gleizes, G.: Mechanisms and  
418 duration of non tectonically assisted magma emplacement in the upper crust: the Black Mesa pluton, Henry Mountains,  
419 Utah. *Tectonophysics*, 428, 1–31, <https://doi.org/10.1016/j.tecto.2006.07.014>, 2006.

420 de Vries, B. V. W., Marquez, A., Herrera, R., Bruña, J. G., Llanes, P., and Delcamp, A.: Craters of elevation revisited:  
421 forced-folds, bulging and uplift of volcanoes. *Bull. Volcanol.* 76, 875, <https://doi.org/10.1007/s00445-014-0875-x>, 2014.

422 Donnadieu, F., and Merle, O.: Experiments on the indentation process during cryptodome intrusions: new insights into  
423 Mount St. Helens deformation. *Geology*, 26, 79–82, [https://doi.org/10.1130/0091-](https://doi.org/10.1130/0091-7613(1998)026<0079:EOTIPD>2.3.CO;2)  
424 [7613\(1998\)026<0079:EOTIPD>2.3.CO;2](https://doi.org/10.1130/0091-7613(1998)026<0079:EOTIPD>2.3.CO;2), 1998.

425 Donnadieu, F., and Merle, O.: Geometrical constraints of the 1980 Mount St. Helens intrusion from analogue models.  
426 *Geophys. Res. Lett.*, 28(4), 639-642, <https://doi.org/10.1029/2000GL011869>, 2001.

427 Ferriz, H., and Mahood, G. A.: Eruption rates and compositional trends at Los Humeros volcanic center, Puebla, Mexico.  
428 *J. Geophys. Res.-Sol. Ea.*, 89, 8511-8524, 1984.

429 Galland, O.: Experimental modelling of ground deformation associated with shallow magma intrusions, *Earth Planet. Sc.*  
430 *Lett.*, 317-318,145-156, <https://doi.org/10.1016/j.epsl.2011.10.017>, 2012.

431 Gao, Y., Jiang, Z., Best, J. L., and Zhang, J.: Soft-sediment deformation structures as indicators of tectono-volcanic  
432 activity during evolution of a lacustrine basin: A case study from the Upper Triassic Ordos Basin, China. *Mar. Petrol.*  
433 *Geol.*, 115, 104250, <https://doi.org/10.1016/j.marpetgeo.2020.104250>, 2020.

434 GEMex: Final Report on geochemical characterization and origin of cold and thermal fluids. Deliverable 4.3. GEMex  
435 project technical report, Horizon 2020, European Union, 213 pp. <http://www.gemex-h2020.eu>, 2019a.

436 GEMex: Final report on active systems: Los Humeros and Acoculco. Deliverable 4.1. GEMex project technical report,  
437 Horizon 2020, European Union, 334 pp. <http://www.gemex-h2020.eu>, 2019b.

438 GEMex: Report on the volcanological conceptual models of Los Humeros and AcoculcoLos Humeros and Acoculco.  
 439 Deliverable 3.2. GEMex project technical report, Horizon 2020, European Union, 169 pp. <http://www.gemex-h2020.eu>,  
 440 2019c.

441 Giordano, G., and Cas, R. A.: Structure of the Upper Devonian Boyd Volcanic Complex, south coast New South Wales:  
 442 Implications for the Devonian-Carboniferous evolution of the Lachlan Fold Belt. *Aust. J. Earth Sci.*, 48(1), 49-61, 2001.

443 Giordano, G., Pinton, A., Cianfarra, P., Baez, W., Chiodi, A., Viramonte, J., Norini, G., and Groppelli, G.: Structural  
 444 control on geothermal circulation in the Cerro Tuzgle–Tocomar geothermal volcanic area (Puna plateau, Argentina). *J.*  
 445 *Volcanol. Geoth. Res.*, 249, 77-94. <https://doi.org/10.1016/j.jvolgeores.2012.09.009>, 2013

446 Giordano, G., Ahumada, M. F., Aldega, L., Baez, W. A., Becchio, R. A., Bigi, S., Caricchi C., Chiodi A., Corrado S., De  
 447 Benedetti A., Favetto A., Filipovich R., Fusari A., Groppelli G., Invernizzi C., Maffucci R., Norini G., Pinton A.,  
 448 Pomposiello C., Tassi F., Taviani S., Viramonte J.: Preliminary data on the structure and potential of the Tocomar  
 449 geothermal field (Puna plateau, Argentina). *Energy. Proced.*, 97, 202-209,  
 450 <https://dx.doi.org/10.1016/j.egypro.2016.10.055>, 2016.

451 Gorshkov, G.S.: Gigantic eruption of the volcano Bezymianny. *Bull. Volcanol.*, 20:77–109,  
 452 <https://doi.org/10.1007/BF02596572>, 1959.

453 Goto, Y. and McPhie, J.: Tectonics, structure, and resurgence of the largest Quaternary caldera in Japan: Kutcharo,  
 454 Hokkaido, *Geol. Soc. Am. Bull.*, 130, 1307–1322, <https://doi.org/10.1130/B31900.1>, 2018.

455 Goto, Y., and Tomiya, A.: Internal Structures and Growth Style of a Quaternary Subaerial Rhyodacite Cryptodome at  
 456 Ogariyama, Usu Volcano, Hokkaido, Japan. *Front. Earth Sci.* 7:66, <https://doi.org/10.3389/feart.2019.00066>, 2019.

457 Guldstrand, F., Burchardt, S., Hallot, E., and Galland, O.: Dynamics of surface deformation induced by dikes and cone  
 458 sheets in a cohesive coulomb brittle crust. *J. Geophys. Res. Solid Earth*, 122, 8511–8524.  
 459 <https://doi.org/10.1002/2017JB014346>, 2017.

460 Guldstrand, F., Galland, O., Hallot, E., and Burchardt, S.: Experimental constraints on forecasting the location of volcanic  
 461 eruptions from preeruptive surface deformation. *Front. Earth Sci.* 6, 1–9. <https://doi.org/10.3389/feart.2018.00007>, 2018.

462 Gutiérrez-Negrín L.C.A.: Current status of geothermal-electric production in Mexico IOP Conf. Ser., *Earth Environ. Sci.*  
 463 249 012017. 2019.

464 Gutiérrez-Negrín, L.C.A. Canchola I., Romo-Jones, J.M. and Quijano-LeónJ.L.: Geothermal energy in Mexico: update  
 465 and perspectives, *Proceedings World Geothermal Congress 2020 Reykjavik, Iceland*, April 26 – May 2, 2020.

466 Hanson, R. E., and Wilson, T. J.: Large-scale rhyolite peperites (Jurassic, southern Chile), *J. Volcanol. Geoth. Res.*, 54(3-  
 467 4), 247-264, [https://doi.org/10.1016/0377-0273\(93\)90066-Z](https://doi.org/10.1016/0377-0273(93)90066-Z), 1993.

468 Hanson, R. E., and Schweickert, R. A.: Chilling and brecciation of a Devonian rhyolite sill intruded into wet sediments,  
 469 northern Sierra Nevada, California. *The Journal of Geology*, 90(6), 717-724, <https://doi.org/10.1086/628726>, 1982.

470 Hildreth, W., Fierstein, J., and Calvert, A.: Early postcaldera rhyolite and structural resurgence at Long Valley Caldera,  
 471 California, *J. Volcanol. Geoth. Res.*, 335, 1–34, <https://doi.org/10.1016/j.jvolgeores.2017.01.005>, 2017.

472 [Hurter, S., and Schellschmidt, R.: Atlas of geothermal resources in Europe. \*Geothermics\*, 32\(4-6\), 779-787.](https://doi.org/10.1016/S0375-6505(03)00070-1)  
 473 [https://doi.org/10.1016/S0375-6505\(03\)00070-1](https://doi.org/10.1016/S0375-6505(03)00070-1), 2003.

474 Jentsch, A., Jolie, E., Jones, D.G., Curran, H.T., Peiffer, L., Zimmer, M., and Lister, B.: Magmatic volatiles to assess  
 475 permeable volcano-tectonic structures in the Los Humeros geothermal field, Mexico. *J. Volcanol. Geoth. Res.*, 394,  
 476 106820 <https://doi.org/10.1016/j.jvolgeores.2020.106820>, 2020.

477 Juárez-Arriaga, E., Böhnell, H., Carrasco-Núñez, G., and Mahgoub, A. N.: Paleomagnetism of Holocene lava flows from  
 478 Los Humeros caldera, eastern Mexico: Discrimination of volcanic eruptions and their age dating. *Journal of South*  
 479 *American Earth Sciences*, 88, 736-748, <https://doi.org/10.1016/j.jsames.2018.10.008>, 2018.  
 480 [Karaoglu, Ö., Bazargan, M., Baba, A. and Browning, J.: Thermal fluid circulation around the Karlioia triple junction:](#)  
 481 [Geochemical features and volcano-tectonic implications \(Eastern Turkey\). \*Geothermics\*, 81, 168-184,](#)  
 482 [<https://doi.org/10.1016/j.geothermics.2019.05.003>, 2019.](#)  
 483 Le Maitre, R.W., Streckeisen, A., Zanettin, B., Le Bas, M. J., Bonin, B., Bateman, P., Bellieni, G., Dudek, A., Efremova,  
 484 S., Keller, J., Lameyre, J., Sabine, P. A., Schmid, R., Sørensen, H., and Woolley, A. R.: *Igneous Rocks. A Classification*  
 485 *and Glossary of terms. Recommendations of the IUGS Subcommittee on the Systematics of Igneous Rocks*, Cambridge  
 486 University Press, 236 pp., 2002.  
 487 Lipman, P.W., Moore, J.G., and Swanson, D.A.: Bulging of the northern flank before the May 18 eruption: geodetic data.  
 488 *U.S. Geol. Surv. Prof. Pap.*, 1250:143–156, 1981.  
 489 Lipman, P.W., Zimmerer, M.J., and McIntosh, W.C.: An ignimbrite caldera from the bottom up: Exhumed floor and fill  
 490 of the resurgent Bonanza caldera, Southern Rocky Mountain volcanic field, Colorado: *Geosphere*, 11, 1902–1947,  
 491 <https://doi.org/10.1130/GES01184.1>, 2015.  
 492 Lorenzo-Pulido, C.D.: Borehole geophysics and geology of well H43, Los Humeros geothermal field, Puebla, Mexico,  
 493 United Nations University, Geothermal Training Programme Report, 23, 387-425, 2008.  
 494 Lucci, F., Carrasco-Núñez, G., Rossetti, F., Theye, T., White, J. C., Urbani, S., Azizi, H., Asahara, Y., and Giordano, G.:  
 495 Anatomy of the magmatic plumbing system of Los Humeros Caldera (Mexico): implications for geothermal systems,  
 496 *Solid Earth*, 11, 125–159, <https://doi.org/10.5194/se-11-125-2020>, 2020.  
 497 Martínez-Serrano, R. G.: Chemical variations in hydrothermal minerals of the Los Humeros geothermal system, Mexico.  
 498 *Geothermics*, 31(5), 579-612, [https://doi.org/10.1016/S0375-6505\(02\)00015-9](https://doi.org/10.1016/S0375-6505(02)00015-9), 2002.  
 499 Mattsson, T., Burchardt, S., Almqvist, B.S.G, and Ronchin, E.: Syn-Emplacement Fracturing in the Sandfell Laccolith,  
 500 Eastern Iceland—Implications for Rhyolite Intrusion Growth and Volcanic Hazards. *Front. Earth Sci.* 6:5.  
 501 <https://doi.org/10.3389/feart.2018.00005>, 2018.  
 502 McConnell, V. S., Shearer, C. K., Eichelberger, J. C., Keskinen, M. J., Layer, P. W., and Papike, J. J.: Rhyolite intrusions  
 503 in the intracaldera Bishop tuff, Long Valley caldera, California. *J. Volcanol. Geoth. Res.*, 67(1-3), 41-60,  
 504 [https://doi.org/10.1016/0377-0273\(94\)00099-3](https://doi.org/10.1016/0377-0273(94)00099-3), 1995.  
 505 Montanari, D., Bonini, M., Corti, G., Agostini, A., and Del Ventisette, C.: Forced folding above shallow magma  
 506 intrusions: Insights on supercritical fluid flow from analogue modelling, *J. Volcanol. Geoth. Res.*, 345, 67–80,  
 507 <http://dx.doi.org/10.1016/j.jvolgeores.2017.07.022>, 2017.  
 508 Norini, G., Groppelli, G., Sulpizio, R., Carrasco-Núñez, G., Dávila-Harris, P., Pellicoli, C., Zucca, F., and De Franco,  
 509 R.: Structural analysis and thermal remote sensing of the Los Humeros Volcanic Complex: Implications for volcano  
 510 structure and geothermal exploration, *J. Volcanol. Geoth. Res.*, 301, 221–237,  
 511 <https://doi.org/10.1016/j.jvolgeores.2015.05.014>, 2015.  
 512 Norini, G., Carrasco-Núñez, G., Corbo-Camargo, F., Lermo, J., Hernández Rojas, J., Castro, C., Bonini, M., Montanari,  
 513 D., Corti, G., Moratti, G., Chavez, G., Ramirez, M., and Cedillo, F.: The structural architecture of the Los Humeros  
 514 volcanic complex and geothermal field, *J. Volcanol. Geoth. Res.*, 381, 312–329,  
 515 <https://doi.org/10.1016/j.jvolgeores.2019.06.010>, 2019.  
 516 Norini, G. and Groppelli, G.: Comment on “Estimating the depth and evolution of intrusions at resurgent calderas: Los  
 517 Humeros (Mexico)” by Urbani et al. (2020), *Solid Earth*, 11, 2549–2556, <https://doi.org/10.5194/se-11-2549-2020>, 2020.



Olvera-García, E., Bianco, C., Víctor Hugo, G. M., Brogi, A., Liotta, D., Wheeler, W., ... and Ruggieri, G.: Geology of Las Minas: an example of an exhumed geothermal system (Eastern Trans-Mexican Volcanic Belt). *J. Maps*, 16(2), 918-926, <https://doi.org/10.1080/17445647.2020.1842815>, 2020.

Peiffer, L., Carrasco-Núñez, G., Mazot, A., Villanueva-Estrada, R., Inguaggiato, C., Romero, RB, Rocha Miller, R., Hernández Rojas, J.: Soil degassing at the Los Humeros geothermal field (Mexico). *Journal of Volcanology and Geothermal Research*, 356, 163-174. <https://doi.org/10.1016/j.jvolgeores.2018.03.001>, 2018.

Petronis, M.S, van Wyk de Vries, B. and Garza, D.: The leaning Puy de Dôme (Auvergne, France) tilted by shallow intrusions. *Volcanica*, 2, 161-189. <https://doi.org/10.30909/vol.02.02.161186>, 2019.

Philpotts, A., and Ague, J.: Principles of igneous and metamorphic petrology. Cambridge University Press, 667 pp., 2009.

Poppe S., Holohan E.P., Galland O., Buls N., Van Gompel G., Keelson B., Tournigand P.-Y., Brancart J., Hollis D., Nila A. and Kervyn M.: An Inside Perspective on Magma Intrusion: Quantifying 3D Displacement and Strain in Laboratory Experiments by Dynamic X-Ray Computed Tomography. *Front. Earth Sci.* 7:62. <https://doi.org/10.3389/feart.2019.00062>, 2019.

Prol-Ledesma, R.M.: Reporte de los estudios petrograficos y de inclusiones fluidas en nucleos de pozos de exploracion en el campo geotermico de Los Humeros, Puebla, Mexico. *Comunicaciones Tecnicas, Instituto de Geofisica, UNAM*: (86), pp. 1–75, 1988.

Prol-Ledesma, R.M.: Pre- and post-exploitation variations in hydrothermal activity in Los Humeros geothermal field, Mexico. *J. Volcanol. Geoth. Res.*, 83, 313–333, [https://doi.org/10.1016/S0377-0273\(98\)00024-9](https://doi.org/10.1016/S0377-0273(98)00024-9), 1998.

Rabiee, A., Rossetti, F., Asahara, Y., Azizi, H., Lucci, F., Lustrino, M., and Nozaem, R.: Long-lived, Eocene-Miocene stationary magmatism in NW Iran along a transform plate boundary. *Gondwana Res.*, 85, 237-262, <https://doi.org/10.1016/j.gr.2020.03.014>, 2020.

Rojas-Ortega, E.: Litoestratigrafia, petrografia y geoquímica de la toba Llano, y su relacion con el crater el Xalapazco, Caldera de Los Humeros, Puebla, MS thesis, pp. 129, San Luis Potosí, Mexico: IPICYT, <https://colecciondigital.cemiego.org/xmlui/handle/123456789/509>, 2016.

Rossetti, F., Aldega, L., Tecce, F., Balsamo, F., Billi, A., and Brilli, M.: Fluid flow within the damage zone of the Boccheggiano extensional fault (Larderello–Travale geothermal field, central Italy): structures, alteration and implications for hydrothermal mineralization in extensional settings. *Geological Magazine*, 148(4), 558-579, <https://doi.org/10.1017/S001675681000097X>, 2011.

Sparks, R. S. J., Annen, C., Blundy, J. D., Cashman, K. V., Rust, A. C., and Jackson, M. D.: Formation and dynamics of magma reservoirs. *Philos. T. Roy. Soc. A*, 377(2139), 20180019, <https://doi.org/10.1098/rsta.2018.0019>, 2019.

Torres-Rodriguez, M.A.: Characterization of the Reservoir of the Los Humeros, México, Geothermal Field, Proceedings of the World Geothermal Congress 1995, Florence, Italy, May 18-31, vol. 3, pp. 1561-1567, 1995.

Urbani, S., Giordano, G., Lucci, F., Rossetti, F., Acocella, V., and Carrasco-Núñez, G.: Estimating the depth and evolution of intrusions at resurgent calderas: Los Humeros (Mexico). *Solid Earth*, 11(2), 527-545, <https://doi.org/10.5194/se-11-527-2020>, 2020.

Van Loon, A. J., and Wiggers, A. J.: Holocene lagoonal silts (formerly called “sloef”) from the Zuiderzee. *Sediment. Geol.*, 13(1), 47-55, [https://doi.org/10.1016/0037-0738\(75\)90049-4](https://doi.org/10.1016/0037-0738(75)90049-4), 1975.

Van Loon, A. J., and Wiggers, A. J.: Metasedimentary “graben” and associated structures in the lagoonal Almere Member (Groningen Formation, The Netherlands). *Sediment. Geol.*, 16(4), 237-254, [https://doi.org/10.1016/0037-0738\(76\)90001-4](https://doi.org/10.1016/0037-0738(76)90001-4), 1976.

Verma, S. P.: Heat source in Los Humeros geothermal area, Puebla, Mexico, *Geoth. Res. T.*, 9, 521–525, 1985.

- 559 Yang, R., and van Loon, A. T.: Early Cretaceous slumps and turbidites with peculiar soft-sediment deformation structures  
560 on Lingshan Island (Qingdao, China) indicating a tensional tectonic regime. *J. Asian Earth Sci.*, 129, 206-219,  
561 <https://doi.org/10.1016/j.jseaes.2016.08.014>, 2016.
- 562 Wernicke, B., and Burchfiel, B. C.: Modes of extensional tectonics. *J. Struct. Geol.*, 4(2), 105-115, 1982.



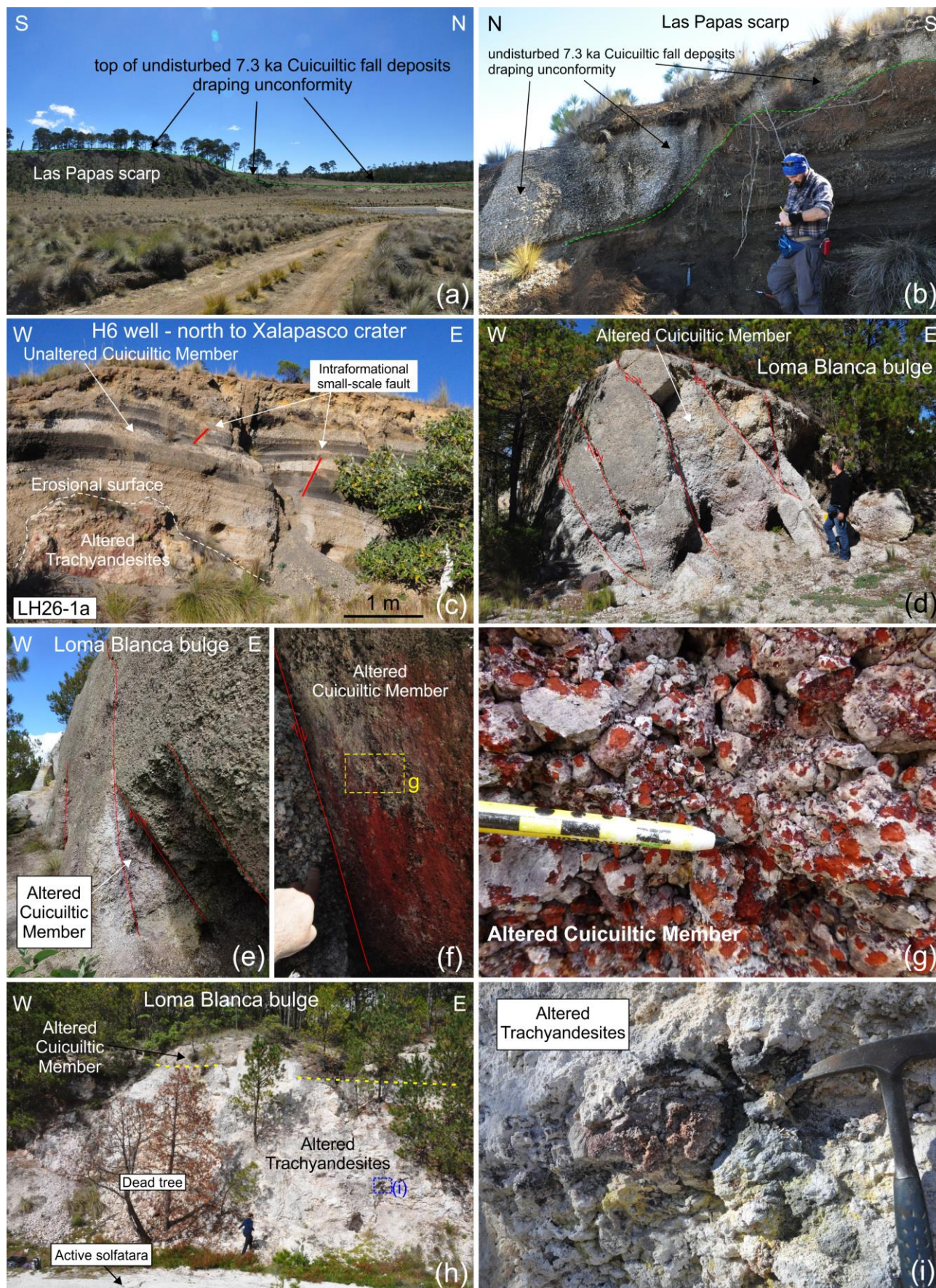
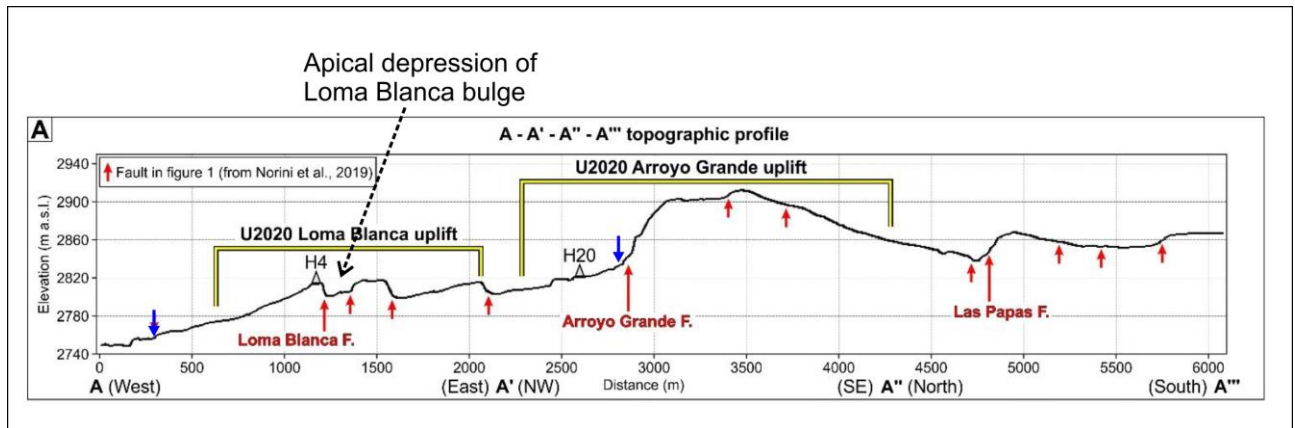


Figure 1: a) Panoramic view showing the top of the draping unconformity surface (green dashed line) of the Cuicuiltic Member fall deposit covering the Las Papas scarp. b) Outcrop image along the Las Papas scarp showing the unaltered and underformed



566 Cuicuiltic Member uncomfortably lying on the Xoxotic Tuff. c) Outcrop scale image of the LH26-1a site, investigated by both  
567 Urbani et al. (2020) and Lucci et al. (2020), showing an altered trachyandesite lava covered by unaltered Cuicuiltic Member  
568 layers along the Maxtaloya scarp close to the H6 well. Intraformational penecontemporaneous small-scale faults are visible in  
569 upper layers of the Cuicuiltic Member deposit. d-g) Hydrothermal alteration associated with normal faults and joints within  
570 the apical depression of the Loma Blanca bulge. f) NNE-SSW-striking Loma Blanca main fault showing reddish alteration on  
571 its plane. g) Detail of the reddish hydrothermal alteration. h-i) Outcrop images of the active solfatara located 300 m away from  
572 the H4 well, at the southern termination of the Loma Blanca fault, showing hydrothermal alteration of both post-caldera  
573 trachyandesites and overlying Cuicuiltic Member fall deposit.



574  
 575 Figure 2: Trace of the A-A'-A''-A''' topographic profile of [Norini and Groppelli \(2020\)](#) ~~N&G2020~~ showing the apical  
 576 depression of the Loma Blanca bulge and reverse faults (blue arrows) at the base of the Arroyo Grande and Loma Blanca  
 577 bulges identified by (Norini et al., 2019). Modified from Fig. 4a of [Norini and Groppelli \(2020\)](#) ~~N&G2020~~.



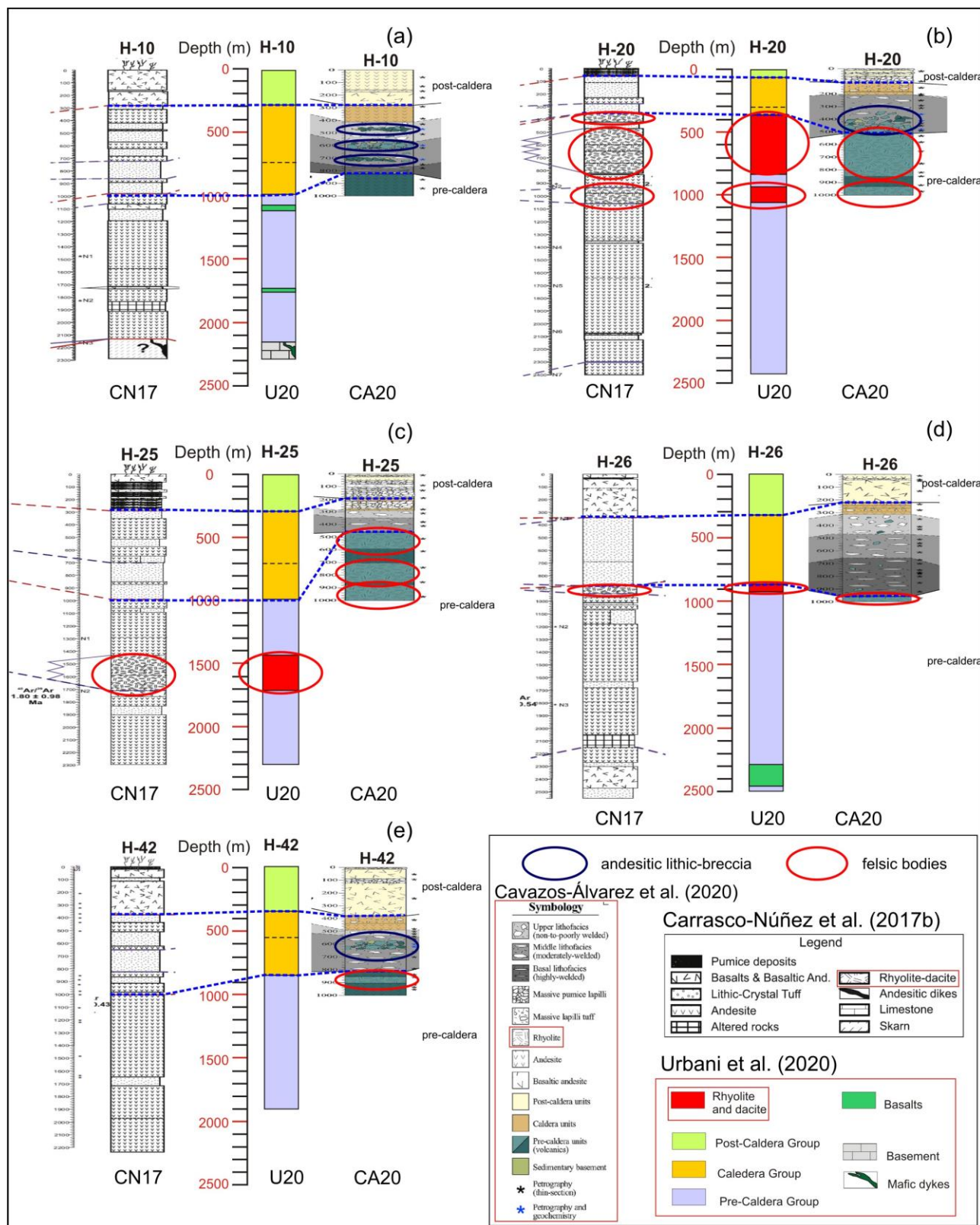


Figure 3: Lithostratigraphic columns of the wells a) H10, b) H20, c) H25, d) H26 and e) H42 as proposed by Carrasco-Núñez et al. (2017b; CN17 in figure), Urbani et al. (2020; U20 in figure) and Cavazos-Alvarez et al. (2020; CA20 in figure). Felsic or rhyolitic bodies within the volcanic sequence are indicated by red ellipses, whereas the newly identified andesitic lithic-breccias within the intracaldera Xaltipan Ignimbrite deposits (Cavazos-Alvarez et al., 2020) are indicated by blue ellipses.

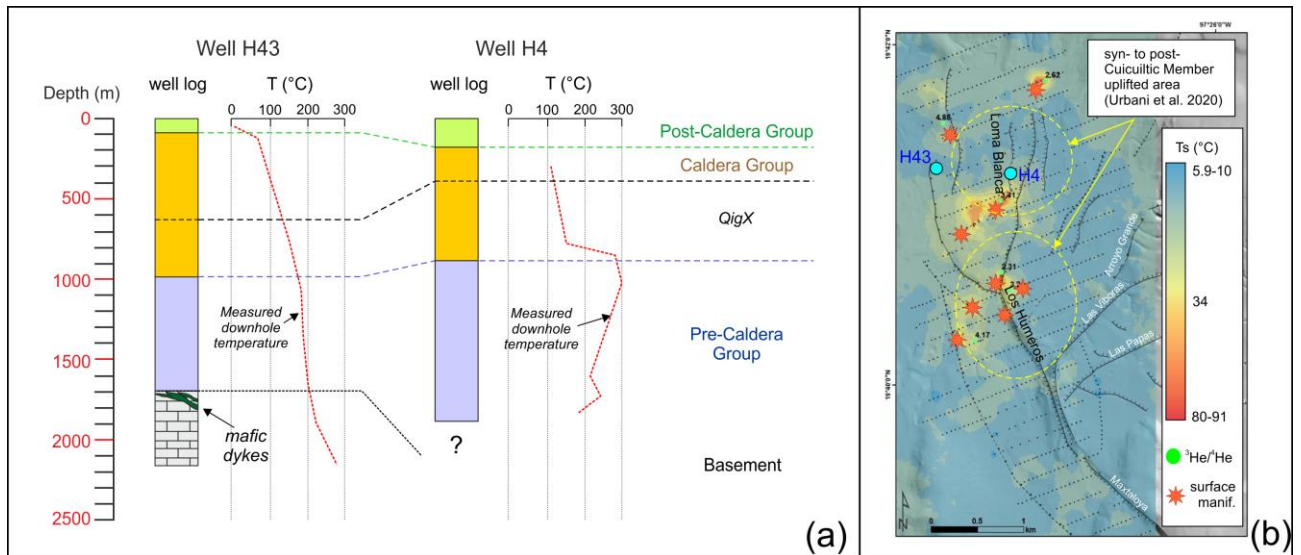
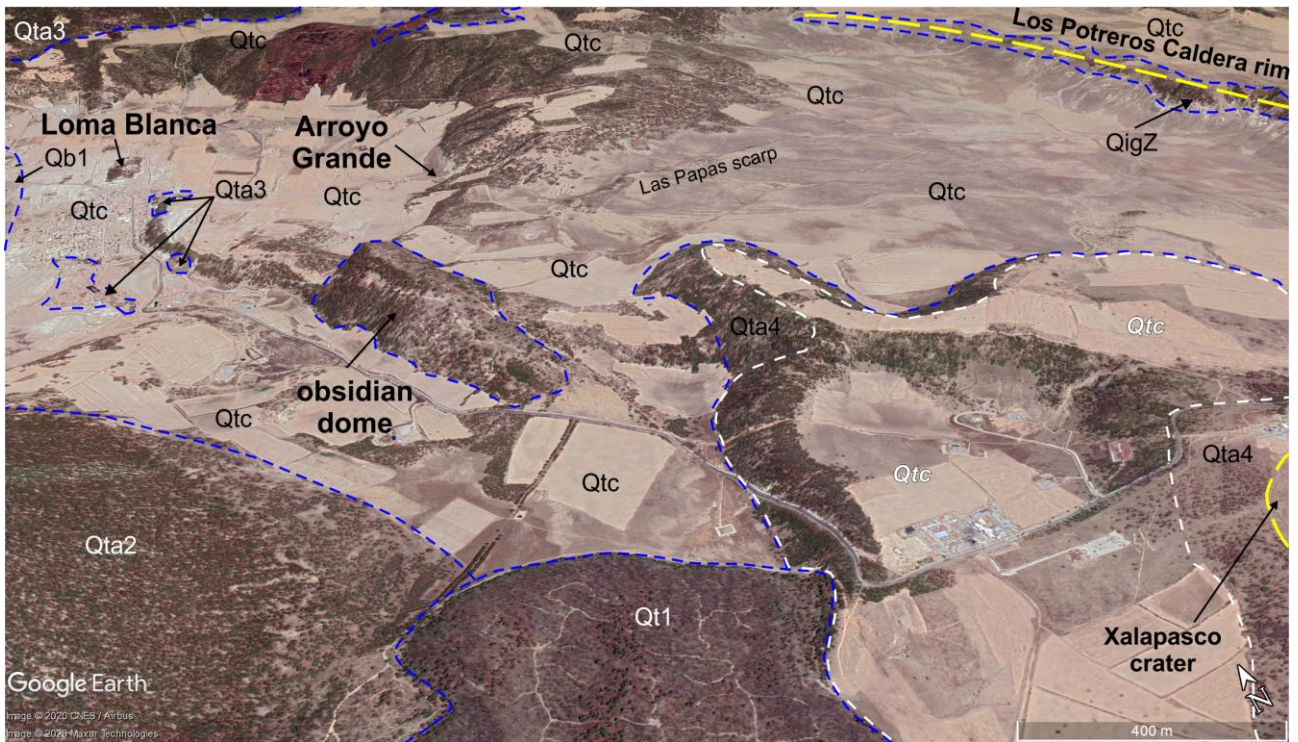


Figure 4: a) In-depth correlation of lithostratigraphic units for H4 and H43 geothermal wells (after Areallano et al., 2003; Carrasco-Núñez et al., 2017b; Urbani et al., 2020). Measured downhole temperature profiles for well H4 (Torres-Rodriguez, 1995; Prol-Ledesma, 1988, 1998; Martinez-Serrano, 2002) and well H43 (Lorenzo-Pulido, 2008) are reported. b) Interpolation map of soil temperatures measured at Los Potreros Caldera (modified after Jentsch et al., 2020; GEMex, 2019a). Orange stars showing locations of hydrothermal surface manifestations are after Jentsch et al. (2020). Geothermal wells H4 and H43 are also reported. Yellow dashed ellipses indicate the syn- to post-Cuicuiltic Member eruption uplifted area as proposed by Urbani et al. (2020).



**Figure 5: Perspective view from a satellite image of the Los Potreros Caldera floor (Image Landsat from Google Earth Pro, 2020, Inegi-Maxar Technologies; courtesy of Google). The dashed blue lines outline the lava domes and flows (Qta2, Qta3, Qb1, Qta4, Qt1) mapped by Carrasco-Núñez et al. (2017a) whereas the dashed white lines outline the mapping of the Cuicuiltic Member (Qtc) from Urbani et al. (2020).**



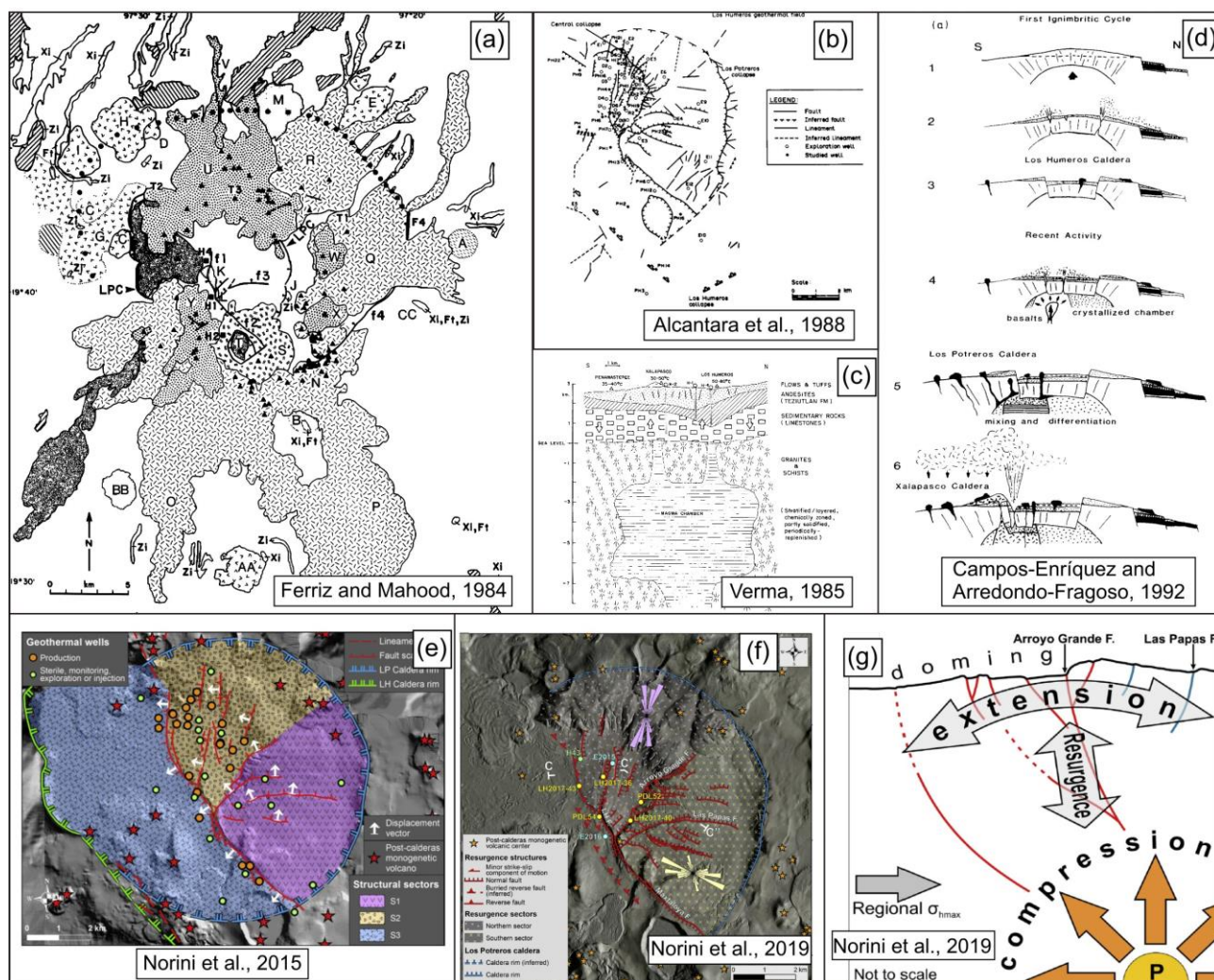


Figure 6: a) The simplified geological map of the Los Humeros volcanic center as proposed by Ferriz and Mahood (1984). b) Schematic map of the Los Potreros caldera showing the main structures and the exploration wells drilled before the 1988. This map was presented by Alcantara et al. (1988) based on unpublished map by CFE. c) Conceptual model of the single voluminous magma chamber underlying the Los Humeros volcanic center as proposed by Verma (1985). d) Schematic representation of the evolution of Los Humeros volcanic complex by Campos-Enriquez and Arredondo-Fragoso (1992) where magmatism, eruptive styles, inflation and deflation phenomena are all correlated to the activity of the single voluminous and shallow-seated magma chamber of Verma (1985). e) Morphostructural map of the Los Potreros caldera with interpretation of the sectorial resurgence as proposed by Norini et al. (2015). f) Morphostructural map of the Los Potreros caldera with interpretation of the sectorial resurgence as proposed by Norini et al. (2019). g) Schematic not to scale structural interpretation of the post-caldera resurgence at Los Humeros induced by a unique pressure source at depth as proposed by Norini et al. (2019).

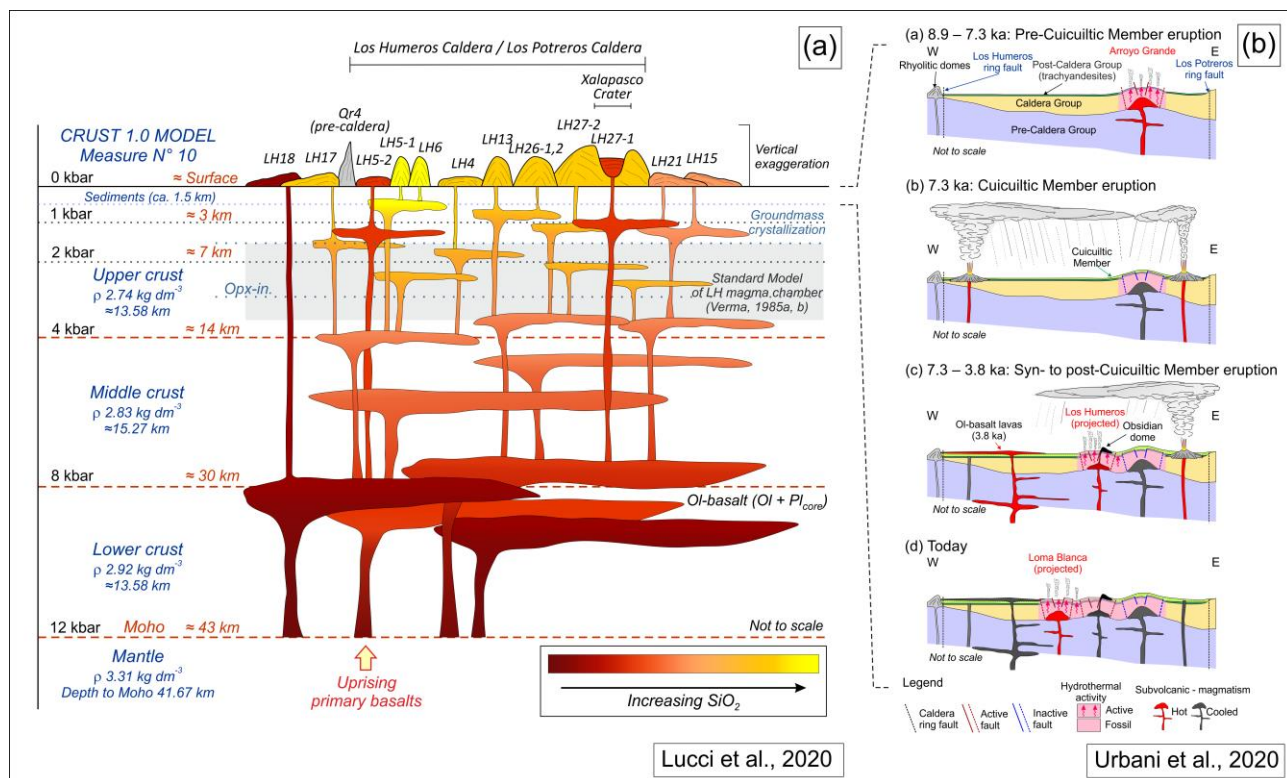


Figure 7: a) Schematic representation (not to scale), by Lucci et al. (2020), of the magmatic plumbing system feeding the Los Humeros post-caldera stage activity, beneath the Los Humeros Caldera, as derived by pressure-temperature estimates obtained from mineral-liquid thermobarometry models. The model is integrated with the crustal structure (see Lucci et al., 2020, for further explanations). b) Schematic model, by Urbani et al. (2020), of the evolution and of the subsurface structure of the Los Potreros caldera floor. Multiple magmatic intrusions located at relatively shallow depth (< 1km) are responsible for the localized bulging of the caldera floor (Arroyo Grande, Los Humeros, and Loma Blanca uplifted areas). The Cuicuiltic Member eruption is assumed as a time-marker in the evolution of the intracaldera domain.