

A reconstruction of Iberia accounting for W-Tethys/N-Atlantic kinematics since the late Permian-Triassic

Paul Angrand¹, Frédéric Mouthereau¹, Emmanuel Masini^{2,3}, and Riccardo Asti⁴

¹Geosciences Environnement Toulouse (GET), Université de Toulouse, UPS, Univ. Paul Sabatier, CNRS, IRD, 14 av. Edouard Belin, F-31400 Toulouse, France

²M&U sas, Saint Egreve, France

³ISTerre, Université Grenoble Alpes, France

⁴Université de Rennes, CNRS, Géosciences Rennes-UMR 6118, 35000 Rennes, France

Correspondence: Paul Angrand (paul.angrand@get.omp.eu)

Abstract. The West European kinematic evolution results from the opening of the West Neotethys and the Atlantic oceans since the late Paleozoic and the Mesozoic. Geological evidence shows that the Iberian domain well recorded the propagation of these two oceanic systems and is therefore a key to significantly advance our understanding of the regional plate reconstructions. The Late Permian-Triassic Iberian rift basins have accommodated extension, but this tectonic stage is often neglected in most plate kinematic models, leading to the overestimation of the movements between Iberia and Europe during the subsequent Mesozoic (Early Cretaceous) rift phase. By compiling existing seismic profiles and geological constraints along the North Atlantic margins, including well data over Iberia, as well as recently published kinematic and paleogeographic reconstructions, we propose a coherent kinematic model of Iberia that accounts for both the Neotethyan and Atlantic evolutions. Our model shows that the Europe-Iberia plate boundary was a domain of distributed and oblique extension made of two rift systems, in the Pyrenees and in the Iberian intra-continental basins. It differs from standard models that consider left-lateral strike-slip movement localized only in the northern Pyrenees in introducing a significant strike-slip movement south of the Ebro block. At a larger scale it emphasizes the role played by the late Permian-Triassic rift and magmatism, as well as strike-slip faulting in the evolution of the western Neotethys Ocean and their control on the development of the Atlantic rift.

Copyright statement. TEXT

1 Introduction

Global plate tectonic reconstructions are mostly based on the knowledge and reliability of magnetic anomalies that record age, rate and direction of sea-floor spreading (Stampfli and Borel, 2002; Müller et al., 2008; Seton et al., 2012). Where these constraints are lacking or their recognition ambiguous, kinematic reconstructions rely on the description and interpretation of the structural, sedimentary, igneous and metamorphic rocks of rifted margins and orogens (e.g., Handy et al., 2010; McQuarrie

20 and Van Hinsbergen, 2013). However, the required quantification and distribution of finite strain into deformed continents remain often uncertain due to the poor preservation of pre-kinematic markers.

A well-known example of this problem is illustrated by the contrasting Mesozoic plate kinematic models proposed for the Iberian plate relative to Europe with significant implications for the reconstructions of the Alpine Tethys and Atlantic oceans (Olivet, 1996; Handy et al., 2010; Sibuet et al., 2004; Vissers and Meijer, 2012; Barnett-Moore et al., 2016; Nirrengarten et al., 25 2018). This movement is proposed to be imposed by the northward propagation of the North Atlantic rifting during the Triassic-Early Cretaceous period (Olivet, 1996; Stampfli et al., 2001; Handy et al., 2010; Barnett-Moore et al., 2016; Nirrengarten et al., 2018). Although all of the proposed reconstructions agree on the amplitude and kinematics of a 400-500 km left-lateral strike-slip motion between Europe and Iberia after the Variscan orogeny, its precise timing and spatial partitioning is debated and remains unresolved so far (e.g., Vissers and Meijer, 2012; Barnett-Moore et al., 2016). Because of the lack of geological 30 constraints, such a large strike-slip displacement has been supposedly exported along the North Pyrenean Fault (Fig. 1a) (e.g., Choukroune and Mattauer, 1978; Debroas, 1987, 1990; Lagabrielle et al., 2010; Jammes et al., 2009). Here again, former studies were not conclusive so there are currently no firm geological constraints nor geophysical evidence across the Pyrenees to argue for significant transcurrent deformation during the Jurassic or the Cretaceous (Olivet, 1996; Masini et al., 2014; Canérot, 2016; Chevrot et al., 2018). Other studies have suggested that this conclusion might hold true back to the Permian 35 based on local geological evidence from the western Pyrenees (Saspiturry et al., 2019).

An alternative scenario has recently emerged (Tugend et al., 2015; Nirrengarten et al., 2018; Tavani et al., 2018), proposing a spatiotemporal partitioning of the deformation in a wider deformation corridor than the single Pyrenean belt. It suggests that the transcurrent deformation that results from the eastwards movement of Iberia occurred mainly during the Late Jurassic-Early Cretaceous in Northern Iberia along a hundred-kilometer scale pull-part or en-echelon rift basins formed by the NW-SE- 40 trending Iberian Massifs. Indeed, along these massifs, several extensional basins recorded major subsidence and strike-slip deformation during the Late Permian to middle Cretaceous time interval (Alvaro et al., 1979; Salas et al., 2001; Aldega et al., 2019; Aurell et al., 2019; Soto et al., 2019). However, no geological evidence for lithosphere-scale strike-slip movements is yet clearly defined in the intra-Iberian basins.

These basins separate the Ebro continental block from the greater Iberia to the south. Ebro is delimited to the north by the 45 Pyrenean system. Extension then migrated and localized to the north (Rat et al., 2019) leading to oceanic spreading in the Bay of Biscay and hyper-extension in the Pyrenean rift basins (Jammes et al., 2009; Lagabrielle et al., 2010; Mouthereau et al., 2014; Tugend et al., 2014, 2015).

Moreover, the contribution of pre-Late Jurassic/Early Cretaceous extension phases might have been substantial to the overall crustal attenuation and movements of Iberia (Fig. 1a) (Fernández, 2019; Soto et al., 2019). Indeed, two major geodynamic 50 events, the late Permian-Early Triassic breakup of Pangea and opening of the Neotethys and the Late Triassic-Early Jurassic Central Atlantic magmatic event preceding the opening of the North Atlantic Ocean are recorded in Iberia and contributed to the finite crustal thinning. Therefore, all full-fit reconstructions considering that extension between Iberia and Newfoundland only initiated by Jurassic times in the North Atlantic realm invariably overestimate the amount of strike-slip motion required in the Pyrenees and northern Iberia from the Jurassic onward (Barnett-Moore et al., 2016; Nirrengarten et al., 2018).

55 Here, we examine the possible contribution of the late Permian-Triassic extension to the plate reconstruction of Iberia between the Neotethys and the North-Central Atlantic domains and its impact on the definition of the spatial and temporal distribution of strike-slip movement between Iberia and Europe. By integrating constraints from 270 Ma to 100 Ma, our reconstructions bring to light the connection between the Tethyan and the Atlantic oceanic domains.

2 Late Permian-Triassic rifting and magmatism in North-Atlantic and Western Europe

60 The tectonic and thermal evolution of the “Iberian buffer” between Africa and Europe at the Permian–Triassic boundary reflects the complex post-Variscan evolution of the Iberian lithosphere. This domain has in fact experienced significant Permian crustal thinning in relation to the post-orogenic collapse of the Variscan belt (De Saint Blanquat et al., 1990; de Saint Blanquat, 1993; Vissers, 1992; Saspiturry et al., 2019) and the fragmentation of the Gondwana margin more broadly (Schettino and Turco, 2011; Stampfli and Borel, 2002; Ziegler, 1989, 1990). This late Permian-Lower Triassic phase is associated with the deposition of
65 thick detrital non-marine deposits in intra-continental basins. Sedimentation became carbonaceous during the middle Triassic. Finally, the Late Triassic is characterized by a thick evaporitic (mainly salt) sequence (e.g., Ortí et al., 2017). However, this phase also resulted in lithospheric mantle delamination and thinning (Malavieille et al., 1990; Fabriès et al., 1991, 1998; Ziegler et al., 2004; Ziegler and Dèzes, 2006; Denèle et al., 2014).

Crustal thinning, attested by thick late Permian-Triassic detrital rift-basins deposited above an erosive surface, is well documented on seismic lines along the Atlantic margins (Fig. 2): Nova Scotia-Moroccan basins (Welsink et al., 1989; Deptuck
70 and Kendell, 2017; Hafid, 2000); Iberia-Grand Banks (Balkwill and Legall, 1989; Leleu et al., 2016; Spooner et al., 2019); southern North Atlantic (Tankard and Welsink, 1987; Doré, 1991; Doré et al., 1999; Štolfova and Shannon, 2009; Peace et al., 2019b; Sandoval et al., 2019); North Western Approaches (Avedik, 1975; Evans, 1990; McKie, 2017); North Sea (McKie, 2017; Jackson et al., 2019; Hassaan et al., 2020; Phillips et al., 2019). Onshore Iberia (Arche and López Gómez, 1996; Soto
75 et al., 2019) and in the Pyrenean-Provence domains (Lucas, 1985; Espurt et al., 2019; Cámara and Flinch, 2017; Bestani et al., 2016) (Fig. 1b), an angular unconformity is observed between the Paleozoic and the Permian-Triassic strata (Fig. 2).

The Permian tectonic phase is contemporaneous with widespread magmatism related to breakup of Pangea, and its transition toward diffuse extension. This is observed in present-day rifted margins of the North Atlantic such as the North Sea and Norwegian-Danish Basins (Glennie et al., 2003), the Western Approach (McKie, 2017), the Scottish Midland Valley (Upton
80 et al., 2004) and in the basement of Cenozoic collision belts around Iberia, for instance, in the Pyrenees (Lago et al., 2004a; Denèle et al., 2012; Vacherat et al., 2017; Saspiturry et al., 2019), Iberian Range (Lago et al., 2004b), Catalan Coastal Ranges (Solé et al., 2002), and in the Betic Cordillera (Sánchez-Navas et al., 2017).

An expression of the continued lithospheric thinning and thermal instability associated with high heat flow during the Permian (McKenzie et al., 2015) and the Triassic (Peace et al., 2019a, and references therein). Lithospheric extension prior (or
85 associated with the premises of the subsequent) Early Jurassic continental breakup in the Central Atlantic then favored drainage of mantle melt reservoir (Silver et al., 2006; Peace et al., 2019a), attested by the very rapid emergence of the widespread tholeiitic magmatic CAMP (Central Atlantic Magmatic Province) event at the Triassic-Jurassic boundary (200 Ma) in the

Central Atlantic (Olsen, 1997; Marzoli et al., 1999; McHone, 2000). The CAMP extends to Iberia as large-scale volcanic intrusions such as the Messejana-Plasencia dyke (Cerbiá et al., 2003) in Iberia and the Late Triassic-Early Jurassic ophiitic magmatism in the Pyrenees (e.g., Azambre et al., 1987). Extension and salt movements in the North Sea basins during the Late Triassic further point to the propagation of the North Atlantic rift (Goldsmith et al., 2003).

The persistence of shallow-marine to non-marine deposition during this period contrasts with the large accommodation space that is required at larger scale to sediment the giant evaporitic province in the Late Permian (Jackson et al., 2019) and in the Late Triassic (Štolfova and Shannon, 2009; Leleu et al., 2016; Ortí et al., 2017). Therefore the subsidence appears much lower than that predicted by simple isostatic model of crustal thinning (McKenzie, 1978).

Two hypotheses may be invoked to explain the difference with the McKenzie model. (1) Reduction of mantle density during lithospheric thinning, due to mantle phase transitions to lighter mineral phases because of crustal attenuation (Simon and Podladchikov, 2008) and/or due to the trapping of melt in the rising asthenosphere before breakup (Quirk and Rüpke, 2018) in addition to magmatic re-thickening of attenuated crust by underplating. (2) Another possible hypothesis for the Permian-Triassic topographic evolution of the Iberian basins relies on the complex post-Variscan evolution of the Iberian lithosphere. Recent studies have shown that during the existence of Pangea supercontinent (300 to 200 Ma), temperature in the asthenospheric mantle increased due to the thermal insulation by the continental lid (Coltice et al., 2009; Ganne et al., 2016). This thermal insulation would be responsible for the accumulation of magmatic material of the CAMP (see Peace et al., 2019a, and references therein). Such mantle thermal anomaly could have further inhibited lithospheric mantle re-equilibration after late-Variscan mantle delamination over a long-time span. This model requires a strong impermeability of the overlying lithosphere (Silver et al., 2006). As a consequence of the Pangea breakup and magmatic emission at the Triassic/Jurassic boundary, lithospheric mantle started to cool and thicken, causing isostatic subsidence of the thinned Iberian crust and resulting in topographic drop.

A first hypothesis to explain the difference with this model is that crustal attenuation induced density reduction of the thinned lithosphere by mantle phase transitions to lighter mineral phases during lithosphere thinning (Simon and Podladchikov, 2008) or due to the trapping of melt in the rising asthenosphere before breakup (Quirk and Rüpke, 2018) in addition to magmatic re-thickening of attenuated crust by underplating. Another possible hypothesis for the Permian-Triassic topographic evolution of the Iberian basins relies on the complex post-Variscan evolution of the Iberian lithosphere. Recent studies have shown that during the existence of Pangea supercontinent (~300 to ~200 Ma), temperature in the asthenospheric mantle increased due to the thermal insulation by the continental lid (Coltice et al., 2009; Ganne et al., 2016). Such mantle thermal anomaly could have further inhibited lithospheric mantle re-equilibration after late-Variscan mantle delamination over a long-time span. Once mantle temperature dropped as a consequence of the Pangea breakup and magmatic emission at the Triassic/Jurassic boundary, lithospheric mantle started to cool and thicken, causing isostatic subsidence of the thinned Iberian crust and resulting in topographic drop.

This argues for a protracted period of ~100 Myr (late Carboniferous to Late Triassic) of continental lithosphere thinning and magmatism prior to Early Cretaceous break-up of the North Atlantic but contemporaneous with the Tethyan evolution. One

main consequence is that the late Permian-Triassic extension has been so far underestimated in plate reconstructions, despite evidence for continuous extension.

3 From late Permian-Early Triassic rifting to Late Jurassic-Early Cretaceous rifting in Iberia

125 The Permian-Triassic basins of Iberia are exposed in the inverted Mesozoic rift basins of the Basque-Cantabrian and Pyrenean belts, the Iberian Ranges, the Catalan Range and the Betic Cordillera (Alvaro et al., 1979; Lagabrielle et al., 2020) (Figs. 1b and 3a). The coincidence between the orientations of the Alpine orogenic segments and the spatial distribution of Permian-Triassic depocentres (Figs. 1b and 3a) suggest that the Cenozoic orogenic cycle largely inherits the earliest stages of the Tethyan rift evolution. In addition, these Permian-Triassic depocentres are superposed over Variscan structures (Fig. 1b), suggesting
130 antecedent tectonic control of the Tethyan continental rift segment by the late Variscan evolution.

We analyse subsidence reconstructed based on a compilation of well data and synthetic stratigraphic section in the Aquitaine Basin (Brunet, 1984), Cameros and Iberian basins (Salas and Casas, 1993; Salas et al., 2001; Omodeo-Salé et al., 2017), West Iberia (Spooner et al., 2019), and the Betics (Hanne et al., 2003), to estimate 1D mean tectonic subsidence evolution in these areas (Fig. 3b, see Supplementary Material for individual tectonic subsidence curves in each region). For each region, we
135 calculated the mean tectonic subsidence, following the approach of Spooner et al. (2019) for which wells that do not sample the entire stratigraphy are corrected based on the oldest well of the region. We then calculated the mean crustal stretching (β factor, Fig. 3c) for each tectonic subsidence curve based on isostatic calculation (Watts, 2001).

During the late Permian-Early Triassic, a first phase of significant tectonic subsidence, up to 500 m, is recorded in the Maestrat basin and on the Iberia paleomargin of the Betic basins (Salas and Casas, 1993; Van Wees et al., 1998; Salas et al.,
140 2001; Hanne et al., 2003; Soto et al., 2019) (Fig. 3b-c). This phase is contemporaneous with the westward migration of marine deposition in the Iberian basins during the middle Triassic (Anisian-Carnian, 240-230 Ma) (Sopeña et al., 1988) argues that Tethyan rifting propagated westward inboard Iberia. The same evolution is suggested by the stratigraphy and the depositional evolution constraints from the Catalan and Basque-Cantabrian basins (Sopeña et al., 1988), and in the Aquitaine domain (Fig. 3b) although ill-defined for the Permian times.

145 During the Late Triassic (220-200 Ma), the regional tectonic subsidence in all regions is found associated with the deposition of evaporites that spread all over Iberia, in the Betics, West Iberia and in the Aquitaine Basin (Fig. 3a). The distribution of salt terrane in Iberia and its surrounding (Fig. 3a) highlights a very large subsiding domain for this period. A maximum mean subsidence of 700 m is inferred in the Maestrat basin for the Triassic times. The relatively rapid subsidence in the Triassic contrasts with the slower subsidence observed during the Early-Middle Jurassic. A notable exception is depicted by the slight
150 increase of subsidence between 200 and 150 Ma in the Betics (Fig. 3b-c), consistent with rifting across the Iberia-Africa boundary (Ramos et al., 2016; Fernández, 2019).

A third Late Jurassic-Early Cretaceous phase (150-110 Ma) is marked by the increase of tectonic subsidence in the Iberian basins, coeval with the expected timing of strike-slip deformation and rifting in Cameros (e.g., Rat et al., 2019; Aurell et al., 2019) and Columbrets (Etheve et al., 2018) basins as well as the initiation of mantle exhumation in the Atlantic domain (Fig.

155 1a) (Murillas et al., 1990; Mohn et al., 2015). The most recent extension is recorded in the Aquitaine Basin at 120-100 Ma that reflects the onset of oceanic spreading in the Bay of Biscay (Fig. 3b-c).

Subsidence analyses show thinning events in Iberia that reveal control by Tethys and Atlantic rifting (late Permian-Late Triassic) and later by the intra-Iberian-Pyrenean rift events (Late Jurassic-Early Cretaceous). In the Iberian basin, this latter event is characterized by a relatively large and short-lived subsidence (1.5 km in 30 Myrs) localized in narrow basins that suggests the strike-slip nature of the boundary between Ebro and Iberia in the Late Jurassic. The long-lasting rift evolution however show an average low stretching factor of about 1.2.

4 Methodology

4.1 Previous kinematic models

We compile and implement previous kinematic models involving Iberia (Fig. 4). The objective is to establish a coherent kinematic model of Iberia that considers both the evolution of the Neotethyan and Atlantic regions. These kinematic models are either global (e.g., Müller et al., 2019), based on the assimilation of geological and geophysical information at large scale to allow a dynamic understanding of Earth's plate tectonics but do not aim to solve regional tectonic issues such as strain partitioning between Iberia and Europe. On the other hand, regional models are focused on the reconstruction of North Atlantic (e.g., Barnett-Moore et al., 2016; Nirrengarten et al., 2018; Peace et al., 2019b) or are interested in the reconstruction of the Alpine orogen with inferences on the kinematics of the Tethys and Adria (Schmid et al., 2008; Handy et al., 2010; Van Hinsbergen et al., 2019).

North Atlantic reconstructions use offshore geophysical constraints from the Northwest Iberian margins and pay relatively little attention to the geological evolution of the Pyrenees and other orogenic domains in Iberia (e.g., Sibuet et al., 2004; Barnett-Moore et al., 2016; Nirrengarten et al., 2018). However, these models give fundamental insights on the geometry of the North Atlantic full-fit reconstruction and the timing of oceanic spreading. The nature of some magnetic anomalies in the southern North Atlantic has been the matter of considerable debate (Olivet, 1996; Sibuet et al., 2004; Vissers and Meijer, 2012; Barnett-Moore et al., 2016). Here, we adopt the reconstruction of Nirrengarten et al. (2018) who propose a model based on the re-evaluation of magnetic anomalies that are considered not oceanic before C34 (83 Ma) and therefore not suitable for kinematic studies (Nirrengarten et al., 2017).

Reconstructions of the Alpine domain (Schmid et al., 2008; Handy et al., 2010) and at a larger scale of the Tethys domain (Van Hinsbergen et al., 2019) are keys to understand the evolution of past oceanic domains now inverted in Alpine orogenic systems (e.g., Paleotethys, Neotethys, Meliata, Pindos and Vardar oceans). These models however do not account for the recent reconstruction of the southern North Atlantic presented above that have impact on the movement of Iberia of interest for our study.

A plate reconstruction from late Permian to middle Cretaceous is presented in Figs. 5 and 6, based on a kinematic modelling using GPlates version 2.1 (Müller et al., 2018). The rotation poles of the main plates are summarized in Table 1 (see also Supplementary Material for GPlates files).

Our compilation is as follow: (1) the reconstruction of the western Tethys prior to the Late Jurassic is constrained by the kinematic evolution of the Mediterranean region since the Triassic from Van Hinsbergen et al. (2019) that we corrected for overlap of Iberia over western France; (2) the kinematics of Africa follows Müller et al. (2019), based on Heine et al. (2013); (3) for the Late Jurassic and Cretaceous times, we compiled rotation poles of the North America-Europe system from Barnett-Moore et al. (2016), updated from Peace et al. (2019) for North Atlantic continental blocks (Flemish Cap, Orphan Knoll, and Porcupine Bank); (4) our reconstruction of Adria follows the model from Müller et al. (2019) that was modified to account for the possible younger opening of the Ionian basin (Tugend et al., 2019).

Because there is no motion during the 270-250 Ma interval for the North America and Africa plates relative to Europe (Domeier and Torsvik, 2014), we extended the full-fit of these models to 270 Ma.

These input models were then updated according to the following constraints (Tab. 2): (1) age of rifting, mantle exhumation, onset of oceanic spreading in the Atlantic; (2) the present-day position of ophiolites bodies and the timing of rifting, oceanic spreading and subduction for the Tethyan-related oceanic domains (Paleotethys, Neotethys, Pindos, Meliata, Vardar); (3) at 100 Ma, Iberia is close to the present-day position relative to Europe, so that the late Mesozoic-Cenozoic Pyrenean shortening is essentially orthogonal.

4.3 Implementations of the pre-existing models

A critical step in determining the pre-rifting configuration is the restoration of rifted margins. Here, we adopted the reconstructed continental crust geometry of Nirrengarten et al. (2018). Polygons from the model of Nirrengarten et al. (2018) that are based on Seton et al. (2012), were re-defined such that they include new smaller polygons (continental micro-blocks) separated by deformed areas in Iberia and Adria to account for internal deformation (Fig. 1b).

The kinematics of these continental blocks (e.g., the Ebro block) has been reconstructed using geological constraints inferred from the tectono-sedimentary evolution of intra- and peri-Iberian basins (see Section 3 and Fig. 3) that allows defining periods of deformation and subsidence related to extension or transcurrent deformation.

Because a full-fit reconstruction in the Southwest Iberia leads to significant overlapping between the Flemish Cap and Galicia, we use the Nazaré Fault (Pereira et al., 2017) to segment West Iberia. This allows us to minimize the overlap of Northwest Iberia (Galicia) over Flemish Cap, or to have a gap between Southwest Iberia and Newfoundland.

5 Kinematics of Iberia between Atlantic and Tethys

215 5.1 Permian-Late Triassic (270-200 Ma)

The Neotethys Ocean opening initiated in the early Permian in the northern Gondwana margin, resulting in the northward drift of the Cimmerian terrane and the subduction of the Paleozoic Paleotethys Ocean (Stampfli et al., 2001; Stampfli and Borel, 2002). This occurred contemporaneously with the establishment of the Carboniferous-Permian magmatic activity in the North Sea rift and Midland Valley rift areas (Evans et al., 2003; Heeremans et al., 2004; Upton et al., 2004).

220 As the Neotethys rift propagated westwards, diffuse continental rifting took place in whole Western Europe defined by the position of the Paleozoic Variscan and Caledonian orogenic belts in the West, the Tornquist suture in the East and a diffuse transtensional transfer zone along the Africa-Iberia-Adria boundary (Fig. 5a). This is recorded by several late Permian rift domains located in the southern North Atlantic (Rasmussen et al., 1998; Leleu et al., 2016), in the Adriatic (Scisciani and Esestime, 2017) in the North Sea (Hassaan et al., 2020), in the Germanic rift basins, including the Zechstein basin (Evans, 225 1990; Van Wees et al., 2000; Jackson et al., 2019) and in Iberia (Figs. 2, 3, and 5a). Recent study (Sandoval et al., 2019) also showed a high pre-Early Jurassic thinning in North Atlantic basins (e.g., Galicia Interior, Porcupine, and Orphan basins).

Back-arc extension associated with the subduction of the Paleotethys (Van Hinsbergen et al., 2019) (Fig. 5b) triggered extension and formation of oceanic basins in the Pindos and Meliata domains during the Early (250 Ma) and Late Triassic (Carnian, 220 Ma), respectively (Channell and Kozur, 1997; Stampfli et al., 2001). As proposed by Schmid et al. (2008), the 230 Pindos ocean was probably a western branch of the Neotethys rather than a unique ocean. The strike-slip reactivation of the Tornquist Zone could also be a far-field effect of Paleotethys closure, as suggested by Phillips et al. (2018).

During the Late Triassic-Early Jurassic (Fig. 5c-d) the opening of the Ionian basin (Tugend et al., 2019) triggers northward displacement of Adria relative to Iberia and Africa and induced trans-tension between Adria and Iberia. This is consistent with Triassic basins of eastern Betics and Catalonia that developed at the emplacement of the future Alpine Tethys, which rifting 235 started from the Late Triassic (220 Ma) (Stampfli and Borel, 2002; Schmid et al., 2008). The large rift-related subsidence in the Iberian basins (Fig. 3b) is kinematically consistent with the stretching lineations documented from Triassic strata (Soto et al., 2019). Ebro is already individualized from Iberia and moved eastwards relative to Iberia and Europe through right-lateral and left-lateral strike-slip movements, respectively.

5.2 Early Jurassic (200-160 Ma)

240 This period marks a gradual change from Tethyan-dominated to Atlantic-dominated tectonism in Iberia. As the Neotethys propagated in the Vardar Ocean, the Pindos and Meliata oceans started to close (Fig. 5c) (Channell and Kozur, 1997). Major dynamic changes occurred with the CAMP event (Olsen, 1997; Marzoli et al., 1999; McHone, 2000; Leleu et al., 2016; Peace et al., 2019b) that led to breakup in the Central Atlantic Ocean during the 190-175 Ma interval (Pliensbachian-Toarcian) (Fig. 5c-d) according to Labails et al. (2010) and Olyphant et al. (2017), respectively. The propagation of the Central Atlantic rift 245 northwards caused extension to propagate in the southern North Atlantic (Murillas et al., 1990; Leleu et al., 2016) and laterally, eastward in the Alpine Tethys (Schmid et al., 2008; Marroni et al., 2017) by some reactivation of Triassic Neotethyan rift

structures. Evidence for nearly synchronous intrusions of MORB-type gabbro, in a western branch of the Alpine Tethys, is described at 180 Ma in the internal zones of eastern Betics (Puga et al., 2011), associated with the rapid subsidence in the Betics (Fig. 3b). However, whether this is related to incipient oceanic spreading or magmatism in hyper-extended margin is controversial. By contrast, both the thermal and stratigraphic evolutions (also Fig. 2) suggest that central Iberia remained little affected by the propagation of the Early Jurassic Atlantic rift Iberian basins (Aurell et al., 2019; Rat et al., 2019). A kinematic change from oblique to orthogonal E-W extension in the Alpine Tethys is marked by the onset of oceanic spreading between the Bajocian-Bathonian (170-166 Ma) and the Oxfordian (161 Ma) as suggested by the ages of MORB magmatism in the Alps (Schaltegger et al., 2002) and first post-rift sediments (Bill et al., 2001). As such the Jurassic Alpine Tethys has temporal and genetic affinities with the Atlantic Ocean evolution, rather than the Neotethys. The required differential movement between the opening the Alpine oceanic domains, the central Atlantic and the closure of the Neotethys and short-lived Vardar Oceans from 160 Ma onward induced the reactivation of the former diffuse transfer zone between Iberia and Africa into a localized transform plate boundary (Fig. 6a).

5.3 Late Jurassic-Early Cretaceous (160-100 Ma)

A major tectonic change occurred in the Late Jurassic-Early Cretaceous when the southernmost North Atlantic successfully rifted the continental domain located offshore Southwest Iberia in present-day coordinates (between 160 and 100 Ma, Fig. 6), as recorded by mantle exhumation and subsequent oceanic spreading at 147 Ma and 135-133 Ma, respectively, in Gorringe bank (Sallarès et al., 2013). Oceanic opening then migrated northward, attested by mantle exhumation and oceanic offshore southwest Galicia between 139.8 and 129.4 Ma (Mohn et al., 2015) and 121-112 Ma (Bronner et al., 2011; Vissers and Meijer, 2012), respectively (Fig. 6b). At that time, the east-directed movement of Iberia relative to Ebro induced left-lateral trans-tensional faulting in a corridor shaped by the Iberian basins (Tugend et al., 2015; Aurell et al., 2019; Rat et al., 2019). We further infer a residual strike-slip movement between Ebro and Europe in the Pyrenean basins until the Mid-Cretaceous (118 Ma) when the Bay of Biscay opened and rotation of Iberia occurred (Sibuet et al., 2004; Barnett-Moore et al., 2016). The eastwards motion of Iberia relative to Adria resulted in the closure of the southern Alpine Tethys (Fig. 6c). Eastward rotation of Africa induces subduction along the northern Neotethyan margin (Schmid et al., 2008) (Fig. 6b-d).

Until 120 Ma (Early Cretaceous) eastward accommodation space is constantly created by the formation of rift segments in the Southwest Alpine domain (Valaisan domain and Southeast basins of France) and then Provence domains (Tavani et al., 2018). In the southern part of the Western Alps, reactivation of Tethyan normal faults are shown to be Late Jurassic-Early Cretaceous in age (Tavani et al., 2018). At 110 Ma, deformation migrates in the South Provence Basin making a straighter continuity of the Pyrenean system toward the East (Tavani et al., 2018).

6 Implications for strike-slip movements and the Europe-Iberia plate boundary

6.1 Amount of strike-slip displacement

Table 3 summarizes the timing, amounts and sense of strike-slip component of the Ebro kinematics relative to Europe and Iberia inferred from our model. Our reconstructions suggest a total left-lateral strike-slip movement of 278 km between Europe and Ebro. 90 km were accommodated during the late Permian-Triassic period (Fig. 5a-c, 270-200 Ma). 86 km were accommodated during the Jurassic (Figs. 5c-d and 6a-b, 200-140 Ma). We quantify 99 km and 19 km for the 140-120 and 120-100 Ma time intervals, respectively, leading to a total of 128 km of strike-slip movement during the Lower Cretaceous, in the range of amounts deduced from offshore and onshore geological observations (Olivet, 1996; Canérot, 2016). By 118 Ma, most of the strike-slip faulting is terminated as extension became orthogonal and Ebro is close to its present-day position (Jammes et al., 2009; Mouthereau et al., 2014). The maximum strain rate of 5 km.Myr^{-1} is obtained for the 140-120 Ma time interval, revealing progressive strain localization in the Pyrenean basins before mantle exhumation (Jammes et al., 2009; Lagabriele et al., 2010; Mouthereau et al., 2014; Tugend et al., 2014).

The Iberia-Ebro boundary has played as right-lateral and left-lateral kinematics. The rapid eastward displacement of Ebro during the late Permian to Late Jurassic period (Figs. 5 and 6) induces a total of 67 km (12, 33, 17, and 5 km during the 270-250, 250-200, 200-180, and 180-160 Ma time interval, respectively) right-lateral strike-slip between Ebro and Iberia (i.e., Galicia). This displacement has been partitioned with extension within the Iberian basins along a NW-directed intra-continental deformation corridor. This is consistent with stretching markers in Triassic rocks in this area (Soto et al., 2019). From 160 to 100 Ma, the northward propagation of the Central Atlantic spreading ridge into the southern North Atlantic resulted in a net left-lateral slip of 245 km and increasing strain rates of up to 9 km.Myr^{-1} , indicating the southern Ebro boundary became the main tectonic boundary in Iberia, accommodating eastwards displacement of Iberia into the Alpine Tethys region.

The cumulated left-lateral displacement from both rift system, corrected for the right-lateral displacement in the Iberian basins, is 456 km, consistent with the absolute 400-500 km required from the closure of the Atlantic between Iberia and Newfoundland.

6.2 Strike-slip structures in the intra-Iberian basins

Despite the requirement of 245 km left-lateral strike-slip displacement along the Iberia-Ebro boundary from 160 to 100 Ma, there is no simple geological evidence in support of a unique major crustal-scale fault in the Iberian Range-Basque Cantabrian Basin system.

Several studies have suggested that a left-lateral shear zone can be recognized along the Iberian Range and the Basque-Cantabrian rifts system. Geological evidence includes the High Tagus Fault in the Iberian Range (Aldega et al., 2019; Aurell et al., 2019) and the Ventaniella Fault in the Basque-Cantabrian region (e.g., Tavani et al., 2011). The latter fault is often considered in recent reconstructions to accommodate alone the Iberia-Ebro movement (Tugend et al., 2015; Nirrengarten et al., 2018). However, the estimated left-lateral displacement along the Ventaniella Fault is only in the order of magnitude of a few kilometers (Tavani et al., 2011) and therefore cannot be used as a North Pyrenean Fault equivalent.

In the Basque Cantabrian Basin, the Ventaniella Fault is part of a NW-SE fault system that acted as left-lateral shear zone during the Late Jurassic-Early Cretaceous and has been subsequently inverted with a right-lateral kinematic during the Cenozoic (De Vicente et al., 2011; Tavani et al., 2011; Cámara and Flinch, 2017). These faults have a Triassic origin (Tavani and Granado, 2015). Tectonic activity along these faults gets younger NE-ward (Ubierna fault: Late Jurassic-Early Cretaceous; Zamanza-Oña fault: Early-Middle Cretaceous; salt tectonics in the center of the basin, Cámara and Flinch, 2017). We suggest the Iberia-Ebro displacement have possibly been distributed along these structures.

The role of the weak Triassic evaporites in efficiently decoupling deformation in the pre-salt basement from the thin-skinned extension in sedimentary cover has been emphasized largely in the Pyrenees (e.g., Grool et al., 2019; Duretz et al., 2019; Jourdon et al., 2020; Lagabriele et al., 2020). Salt tectonics has also been suggested to have been particularly significant from the Jurassic through the Early Cretaceous in Mesozoic basins that shaped NW-directed boundary between Ebro and Iberia, including the Basque-Cantabrian Basin (Cámara and Flinch, 2017), Parentis Basin (Ferrer et al., 2012), Cameros Basin (Rat et al., 2019) and Maestrat Basin (Vergés et al., 2020). The surface expression of the crustal strike-slip movements is inferred to have been limited in supra-salt layers.

The mechanism responsible for the independent movement of Ebro relative to Europe and Iberia prior to the opening of the southern North Atlantic remains unclear. The most likely hypothesis is that before the opening of the Alpine Tethys, the Ebro continental block was related to the regional eastward rotation of the Africa-Adria system. This rotation caused Ebro to move eastward, accommodating left-lateral and right-lateral strike-slip kinematics in the Pyrenean and Iberian basins, respectively.

7 Conclusions

To revolve several long-lasting problems of the Mesozoic kinematics of Iberia, we propose to better account for deformation associated with late Permian-Triassic rifting, the role of the Ebro continental block in accommodating complex strain partitioning along the Iberia-Europe plate boundary, and replace Iberia in a refined plate reconstruction between the Atlantic and Tethys domains. We show that: (1) left-lateral strike-slip movement did occur in the Pyrenees from the late Permian to the Early Cretaceous but ended as the Bay of Biscay opened, (2) late Permian-Triassic extension in the Atlantic and Iberia (including Ebro) is key to quantify the strike-slip movement in Iberia that is otherwise not well resolved from the geological constraints in Iberian basins and from full-fit reconstructions in the Jurassic. Salt tectonics that decouples syn-rift Iberian basins evolution from their basement likely explains the lack of geological constraints.

The diffuse deformation across the Iberia-Europe plate boundary prior to oceanic spreading in the Bay of Biscay and hyper-extension in the Pyrenees appears to result mainly from transcurrent deformation partitioned with subordinate fault-perpendicular extension. The major intra-Iberia NW-trending strike-slip fault system outlined by spatially disconnected rift basins (Basque-Cantabrian, Cameros, Maestrat, and Columbrets basins) played a significant role in the Late Jurassic-Early Cretaceous, in addition to the North Pyrenean rift system.

By integrating the position of Iberia in the Tethyan and Atlantic evolution and propagating the effect of the eastward movement of Iberia into the Alpine Tethys, our reconstructions further implies that: 1) Ebro was part of Adria before the onset of

the Alpine Tethys opening, 2) the southern Alpine Tethys closed in the Early Cretaceous (145 to 100 Ma), 3) the boundary between Iberia and Africa localized as a transform plate boundary at 160 Ma, connecting the Alpine oceanic domains with the Central Atlantic.

345 *Author contributions.* This article was mostly written by P. Angrand and F. Mouthereau. P. Angrand has carried out the compilation of data, interpretation and kinematic model and figures, in tight collaboration with F. Mouthereau. The text benefits from the expertise and contribution of E. Masini and R. Asti.

Competing interests. No competing interests are present.

Acknowledgements. This study is part of the OROGEN scientific project (Total/CNRS-INSU/BRGM) as a post-doctoral grant of P. Angrand.
350 We acknowledge the members of the OROGEN scientific project for support and discussions, in particular S. Calassou, O. Vidal, I. Thinon, L. Moen-Maurel, M. Ford, L. Jolivet, G. Manatschal and G. Frasca. We thank Alexander L. Peace and an anonymous referee for very constructive comments and suggestions that led us to improve the manuscript.

References

- Aldega, L., Viola, G., Casas-Sainz, A., Marcén, M., Román-Berdiel, T., and van der Lelij, R.: Unraveling Multiple Thermotectonic Events
355 Accommodated by Crustal-Scale Faults in Northern Iberia, Spain: Insights From K-Ar Dating of Clay Gouges, *Tectonics*, 38, 3629–3651, <https://doi.org/10.1029/2019TC005585>, 2019.
- Alvaro, M., del Villar, R. C., and Vegas, R.: Un modelo de evolución geotectónica para la Cadena Celtibérica, *Acta Geológica Hispánica*, 14, 172–177, 1979.
- Arche, A. and López Gómez, J.: Origin of the Permian-Triassic Iberian basin, central-eastern Spain, *Tectonophysics*, 266, 443–464, 1996.
- 360 Aurell, M., Fregenal-Martínez, M., Bádenas, B., Muñoz-García, M. B., Élez, J., Meléndez, N., and de Santisteban, C.: Middle Jurassic–Early Cretaceous tectono-sedimentary evolution of the southwestern Iberian Basin (central Spain): Major palaeogeographical changes in the geotectonic framework of the Western Tethys, *Earth-Science Reviews*, 199, 102983, <https://doi.org/10.1016/j.earscirev.2019.102983>, <https://doi.org/10.1016/j.earscirev.2019.102983>, 2019.
- Avedik, F.: Seismic Structure of the Western Approaches and the South Armorican Continental Shelf and Its Geological Interpretation., *Geol*,
365 1, 29–43, 1975.
- Azambre, B., Rossy, M., and Lago, M.: Caractéristiques pétrologiques des dolérites tholéitiques d ' âge triasique (ophites) du domaine pyrénéen, *Bulletin de Minéralogie*, 110, 379–396, 1987.
- Balkwill, H. R. and Legall, F. D.: Whale Basin, Offshore Newfoundland: Extension and Salt Diapirism: Chapter 15: North American Margins, 1989.
- 370 Barnett-Moore, N., Hosseinpour, M., and Maus, S.: Assessing discrepancies between previous plate kinematic models of Mesozoic Iberia and their constraints, *Tectonics*, 35, 1843–1862, <https://doi.org/10.1002/2015TC004019>, 2016.
- Bestani, L., Espurt, N., Lamarche, J., Bellier, O., and Hollender, F.: Reconstruction of the Provence Chain evolution, southeastern France, *Tectonics*, 35, 1506–1525, <https://doi.org/10.1002/2016TC004115>, 2016.
- Bill, M., O'Dogherty, L., Guex, J., Baumgartner, P. O., and Masson, H.: Radiolarite ages in Alpine-Mediterranean ophiolites: Con-
375 straints on the oceanic spreading and the Tethys-Atlantic connection, *Bulletin of the Geological Society of America*, 113, 129–143, [https://doi.org/10.1130/0016-7606\(2001\)113<0129:RAIAMO>2.0.CO;2](https://doi.org/10.1130/0016-7606(2001)113<0129:RAIAMO>2.0.CO;2), 2001.
- Bronner, A., Sauter, D., Manatschal, G., Péron-pinvidic, G., and Munschy, M.: Magmatic breakup as an explanation for magnetic anomalies at magma-poor rifted margins, *Nature Geoscience*, 4, 549–553, <https://doi.org/10.1038/nphys1201>, <http://dx.doi.org/10.1038/nphys1201>, 2011.
- 380 Cámara, P. and Flinch, J.: The Southern Pyrenees: A Salt-Based Fold-and-Thrust Belt., *Permo-Triassic Salt Provinces of Europe, North Africa and the Atlantic Margins*, pp. 395–415, <https://doi.org/10.1016/B978-0-12-809417-4.00019-7>, <https://www.sciencedirect.com/science/article/pii/B9780128094174000197>{% }0Ahttps://linkinghub.elsevier.com/retrieve/pii/B9780128094174000197, 2017.
- Canérot, J.: The Iberian plate: Myth or reality?, *Boletín Geológico y Minero*, 127, 563–574, 2016.
- Cerbiá, J. M., López-Ruiz, J., Doblas, M., Martins, L. T., and Munha, J.: Geochemistry of the Early Jurassic Messejana-Plasencia
385 dyke (Portugal-Spain); Implications on the Origin of the Central Atlantic Magmatic Province, *Journal of Petrology*, 44, 547–568, <https://doi.org/10.1093/petrology/44.3.547>, <https://academic.oup.com/petrology/article-lookup/doi/10.1093/petrology/44.3.547>, 2003.
- Channell, J. E. and Kozur, H. W.: How many oceans? Meliata, Vardar, Pindos oceans in Mesozoic Alpine paleogeography, *Geology*, 25, 183–186, [https://doi.org/10.1130/0091-7613\(1997\)025<0183:HMOMVA>2.3.CO;2](https://doi.org/10.1130/0091-7613(1997)025<0183:HMOMVA>2.3.CO;2), 1997.

- Chevrot, S., Sylvander, M., Diaz, J., Martin, R., Mouthereau, F., Manatschal, G., Masini, E., Calassou, S., Grimaud, F., Pauchet, H., and Ruiz, M.: The non-cylindrical crustal architecture of the Pyrenees, *Scientific Reports*, 8, 1–8, <https://doi.org/10.1038/s41598-018-27889-x>, 2018.
- Choukroune, P. and Mattauer, M.: Tectonique des plaques et Pyrenees; sur le fonctionnement de la faille transformante nord-pyreneenne; comparaisons avec des modeles actuels, *Bulletin de la Société géologique de France*, 7, 689–700, 1978.
- Coltice, N., Bertrand, H., Rey, P., Jourdan, F., Phillips, B. R., and Ricard, Y.: Global warming of the mantle beneath continents back to the Archaean, *Gondwana Research*, 15, 254–266, <https://doi.org/10.1016/j.gr.2008.10.001>, <http://dx.doi.org/10.1016/j.gr.2008.10.001>, 2009.
- de Saint Blanquat, M.: La faille normale ductile du massif du Saint Barthélémy. Evolution hercynienne des massifs nord-pyrénéens catazonaux considérée du point de vue de leur histoire thermique, *Geodinamica Acta*, 6, 59–77, 1993.
- De Saint Blanquat, M., Lardeaux, J. M., and Brunel, M.: Petrological arguments for high-temperature extensional deformation in the Pyrenean Variscan crust (Saint Barthélémy Massif, Ariège, France), *Tectonophysics*, 177, 245–262, 1990.
- De Vicente, G., Cloetingh, S. A., Van Wees, J. D., and Cunha, P. P.: Tectonic classification of Cenozoic Iberian foreland basins, *Tectonophysics*, 502, 38–61, <https://doi.org/10.1016/j.tecto.2011.02.007>, <http://dx.doi.org/10.1016/j.tecto.2011.02.007>, 2011.
- Debroas, E. J.: Modèle de bassin triangulaire à l’intersection de décrochements divergents pour le fossé albo-cénomanién de la Ballongue (Zone Nord-Pyrénéenne, France), *Bulletin de la Societe Géologique de France*, 8, 887–898, 1987.
- Debroas, E. J.: Le Flysch noir albo-cénomanién témoin de la structuration albienne à sénonienne de la Zone nord-pyrénéenne en Bigorre (Hautes-Pyrénées, France), *Bull. Soc. géol. France*, 8, 273–285, 1990.
- Denèle, Y., Paquette, J. L., Olivier, P., and Barbey, P.: Permian granites in the Pyrenees: The Aya pluton (Basque Country), *Terra Nova*, 24, 105–113, <https://doi.org/10.1111/j.1365-3121.2011.01043.x>, 2012.
- Denèle, Y., Laumonier, B., Paquette, J. L., Olivier, P., Gleizes, G., and Barbey, P.: Timing of granite emplacement, crustal flow and gneiss dome formation in the Variscan segment of the Pyrenees, *Geological Society Special Publication*, 405, 265–287, <https://doi.org/10.1144/SP405.5>, 2014.
- Deptuck, M. E. and Kendell, K. L.: A review of Mesozoic-Cenozoic salt tectonics along the Scotian margin, eastern Canada, in: *Permo-Triassic Salt Provinces of Europe, North Africa and the Atlantic Margins*, pp. 287–312, Elsevier, 2017.
- Domeier, M. and Torsvik, T. H.: Plate tectonics in the late Paleozoic, *Geoscience Frontiers*, 5, 303–350, <https://doi.org/10.1016/j.gsf.2014.01.002>, <http://dx.doi.org/10.1016/j.gsf.2014.01.002>, 2014.
- Doré, A. G.: The structural foundation and evolution of Mesozoic seaways between Europe and the Arctic, *Palaeogeography, Palaeoclimatology, Palaeoecology*, 87, 441–492, 1991.
- Doré, A. G., Lundin, E. R., Jensen, L. N., Birkeland, Ø., Eliassen, P. E., and Fichler, C.: Principal tectonic events in the evolution of the northwest European Atlantic margin, in: *Geological society, London, petroleum geology conference series*, vol. 5, pp. 41–61, Geological Society of London, 1999.
- Duretz, T., Asti, R., Lagabriele, Y., Brun, J. P., Jourdon, A., Clerc, C., and Corre, B.: Numerical modelling of Cretaceous Pyrenean Rifting: The interaction between mantle exhumation and syn-rift salt tectonics, *Basin Research*, pp. 1–16, <https://doi.org/10.1111/bre.12389>, 2019.
- Espurt, N., Angrand, P., Teixell, A., Labaume, P., Ford, M., De Saint Blanquat, M., and Chevrot, S.: Crustal-scale balanced cross-section and restorations of the Central Pyrenean belt (Nestes-Cinca transect): Highlighting the structural control of Variscan belt and Permian-Mesozoic rift systems on mountain building, *Tectonophysics*, 764, 25–45, <https://doi.org/10.1016/j.tecto.2019.04.026>, <https://doi.org/10.1016/j.tecto.2019.04.026>, 2019.

- Etheve, N., Mohn, G., Frizon de Lamotte, D., Roca, E., Tugend, J., and Gómez-Romeu, J.: Extreme Mesozoic Crustal Thinning in the Eastern Iberia Margin: The Example of the Columbrets Basin (Valencia Trough), *Tectonics*, 37, 636–662, <https://doi.org/10.1002/2017TC004613>, 2018.
- Evans, C. D. R.: United Kingdom offshore regional report: the geology of the western English Channel and its western approaches, Tech. rep., 1990.
- Evans, D., of London, G. S., Petroleumforening, N., and geologiske Undersøgelse, D. o. G.: The Millennium Atlas: Petroleum Geology of the Central and Northern North Sea, Geological Society of London, <https://books.google.co.uk/books?id=sR50QgAACAAJ>, 2003.
- Fabriès, J., Lorand, J. P., Bodinier, J. L., and Dupuy, C.: Evolution of the upper mantle beneath the pyrenees: Evidence from orogenic spinel lherzolite massifs, *Journal of Petrology, Special-Vo*, 55–76, https://doi.org/10.1093/petrology/Special_Volume.2.55, 1991.
- 435 Fabriès, J., Lorand, J. P., and Bodinier, J. L.: Petrogenetic evolution of orogenic lherzolite massifs in the central and western Pyrenees, *Tectonophysics*, 292, 145–167, [https://doi.org/10.1016/S0040-1951\(98\)00055-9](https://doi.org/10.1016/S0040-1951(98)00055-9), 1998.
- Fernández, O.: The Jurassic evolution of the Africa-Iberia conjugate margin and its implications on the evolution of the Atlantic-Tethys triple junction, *Tectonophysics*, 750, 379–393, <https://doi.org/10.1016/j.tecto.2018.12.006>, <https://doi.org/10.1016/j.tecto.2018.12.006>, 2019.
- Ferrer, O., Jackson, M. P., Roca, E., and Rubinat, M.: Evolution of salt structures during extension and inversion of the Offshore Parentis Basin (Eastern Bay of Biscay), *Geological Society Special Publication*, 363, 361–380, <https://doi.org/10.1144/SP363.16>, 2012.
- 440 Ganne, J., Feng, X., Rey, P., and De Andrade, V.: Statistical petrology reveals a link between supercontinents cycle and mantle global climate, *American Mineralogist*, 101, 2768–2773, <https://doi.org/10.2138/am-2016-5868>, <https://pubs.geoscienceworld.org/ammin/article/101/12/2768-2773/298173>, 2016.
- Glennie, K. W., Higham, J., and Stemmerik, L.: Permian, in: The millennium atlas; petroleum geology of the central and northern North Sea, edited by Evans, D., Graham, C., Armour, A., and Bathurst, P., chap. 8, pp. 91–103, Geological Society of London, London, 2003.
- 445 Goldsmith, P. J., Hudson, G., and Van Veen, P.: Triassic, in: The millennium atlas; petroleum geology of the central and northern North Sea, edited by Evans, D., Graham, C., Armour, A., and Bathurst, P., pp. 105–127, Geological Society of London, London, 2003.
- Grool, A. R., Huismans, R. S., and Ford, M.: Salt décollement and rift inheritance controls on crustal deformation in orogens, *Terra Nova*, 31, 562–568, <https://doi.org/10.1111/ter.12428>, 2019.
- 450 Hafid, M.: Triassic-early Liassic extensional systems and their Tertiary inversion, Essaouira Basin (Morocco), *Marine and Petroleum Geology*, 17, 409–429, [https://doi.org/10.1016/S0264-8172\(98\)00081-6](https://doi.org/10.1016/S0264-8172(98)00081-6), 2000.
- Handy, M. R., M. Schmid, S., Bousquet, R., Kissling, E., and Bernoulli, D.: Reconciling plate-tectonic reconstructions of Alpine Tethys with the geological-geophysical record of spreading and subduction in the Alps, *Earth-Science Reviews*, 102, 121–158, <https://doi.org/10.1016/j.earscirev.2010.06.002>, <http://dx.doi.org/10.1016/j.earscirev.2010.06.002>, 2010.
- 455 Hanne, D., White, N., and Lonergan, L.: Subsidence analyses from the Betic Cordillera, southeast Spain, *Basin Research*, 15, 1–21, <https://doi.org/10.1046/j.1365-2117.2003.00192.x>, 2003.
- Hassaan, M., Inge, J., Helge, R., and Tsikalas, F.: Carboniferous graben structures , evaporite accumulations and tectonic inversion in the southeastern Norwegian Barents Sea, *Marine and Petroleum Geology*, 112, 104 038, <https://doi.org/10.1016/j.marpetgeo.2019.104038>, <https://doi.org/10.1016/j.marpetgeo.2019.104038>, 2020.
- 460 Heeremans, M., Timmerman, M. J., Kirstein, L. A., and Faleide, J. I.: New constraints on the timing of late Carboniferous-early Permian volcanism in the central North Sea, *Geological Society, London, Special Publications*, 223, 177–193, 2004.
- Heine, C., Zoethout, J., and Müller, R. D.: Kinematics of the South Atlantic rift, *Solid Earth*, 4, 215–253, <https://doi.org/10.5194/se-4-215-2013>, 2013.

- Jackson, C. A., Gawthorpe, R. L., Elliott, G. M., and Rogers, E. R.: Salt thickness and composition influence rift structural style , northern North Sea , offshore Norway, pp. 514–538, <https://doi.org/10.1111/bre.12332>, 2019.
- Jammes, S., Manatschal, G., Lavier, L., and Masini, E.: Tectonosedimentary evolution related to extreme crustal thinning ahead of a propagating ocean: Example of the western Pyrenees, *Tectonics*, 28, 1–24, <https://doi.org/10.1029/2008TC002406>, 2009.
- Jourdon, A., Mouthereau, F., Pourhiet, L. L., and Callot, J. P.: Topographic and Tectonic Evolution of Mountain Belts Controlled by Salt Thickness and Rift Architecture, pp. 1–14, <https://doi.org/10.1029/2019TC005903>, 2020.
- Labails, C., Olivet, J. L., Aslanian, D., and Roest, W. R.: An alternative early opening scenario for the Central Atlantic Ocean, *Earth and Planetary Science Letters*, 297, 355–368, <https://doi.org/10.1016/j.epsl.2010.06.024>, <http://dx.doi.org/10.1016/j.epsl.2010.06.024>, 2010.
- Lagabrielle, Y., Labaume, P., and De Saint Blanquat, M.: Mantle exhumation, crustal denudation, and gravity tectonics during Cretaceous rifting in the Pyrenean realm (SW Europe): Insights from the geological setting of the lherzolite bodies, *Tectonics*, 29, 1–26, <https://doi.org/10.1029/2009TC002588>, 2010.
- Lagabrielle, Y., Asti, R., Duretz, T., Clerc, C., Fourcade, S., Teixell, A., Labaume, P., Corre, B., and Saspiturry, N.: A review of cretaceous smooth-slopes extensional basins along the Iberia-Eurasia plate boundary: How pre-rift salt controls the modes of continental rifting and mantle exhumation, *Earth-Science Reviews*, 201, 103 071, <https://doi.org/10.1016/j.earscirev.2019.103071>, <https://doi.org/10.1016/j.earscirev.2019.103071>, 2020.
- Lago, M., Arranz, E., Pocoví, A., Galé, C., and Gil-Imaz, A.: Lower Permian magmatism of the Iberian Chain, Central Spain, and its relationship to extensional tectonics, *Geological Society, London, Special Publications*, 223, 465–490, <https://doi.org/10.1144/GSL.SP.2004.223.01.20>, <http://sp.lyellcollection.org/lookup/doi/10.1144/GSL.SP.2004.223.01.20>, 2004a.
- Lago, M., Arranz, E., Pocoví, A., Galé, C., and Gil-Imaz, A.: Permian magmatism and basin dynamics in the southern Pyrenees: a record of the transition from late Variscan transtension to early Alpine extension, *Geological Society, London, Special Publications*, 223, 439–464, 2004b.
- Leleu, S., Hartley, A. J., van Oosterhout, C., Kennan, L., Ruckwied, K., and Gerdes, K.: Structural, stratigraphic and sedimentological characterisation of a wide rift system: The Triassic rift system of the Central Atlantic Domain, *Earth-Science Reviews*, 158, 89–124, <https://doi.org/10.1016/j.earscirev.2016.03.008>, <http://dx.doi.org/10.1016/j.earscirev.2016.03.008>, 2016.
- Lucas, C.: Le grès rouge du versant nord des Pyrénées: essai sur la géodynamique de dépôts continentaux du Permien et du Trias, Ph.D. thesis, Université de Toulouse, 1985.
- Malavieille, J., Guihot, P., Costa, S., Lardeaux, J. M., and Gardien, V.: Collapse of the thickened Variscan crust in the French Massif Central: Mont Pilat extensional shear zone and St. Etienne Late Carboniferous basin, *Tectonophysics*, 177, 139–149, 1990.
- Marroni, M., Meneghini, F., and Pandolfi, L.: A Revised Subduction Inception Model to Explain the Late Cretaceous, Double-Vergent Orogen in the Precollisional Western Tethys: Evidence From the Northern Apennines, *Tectonics*, 36, 2227–2249, <https://doi.org/10.1002/2017TC004627>, 2017.
- Marzoli, A., Renne, P. R., Piccirillo, E. M., Ernesto, M., Bellieni, G., and De Min, A.: Extensive 200-million-year-old continental flood basalts of the Central Atlantic Magmatic Province, *Science*, 284, 616–618, <https://doi.org/10.1126/science.284.5414.616>, 1999.
- Masini, E., Manatschal, G., Tugend, J., Mohn, G., and Flament, J. M.: The tectono-sedimentary evolution of a hyper-extended rift basin: The example of the Arzacq-Mauléon rift system (Western Pyrenees, SW France), *International Journal of Earth Sciences*, 103, 1569–1596, <https://doi.org/10.1007/s00531-014-1023-8>, 2014.
- McHone, J. G.: Non-plume magmatism and rifting during the opening of the central Atlantic Ocean, *Tectonophysics*, 316, 287–296, [https://doi.org/10.1016/S0040-1951\(99\)00260-7](https://doi.org/10.1016/S0040-1951(99)00260-7), 2000.

- McKenzie, D.: Some remarks on the development of sedimentary basins, *Earth and Planetary Science Letters*, 40, 25–32, [https://doi.org/10.1016/0012-821X\(78\)90071-7](https://doi.org/10.1016/0012-821X(78)90071-7), 1978.
- McKenzie, D., Daly, M. C., and Priestley, K.: The lithospheric structure of Pangea, *Geology*, 43, 783–786, <https://doi.org/10.1130/G36819.1>, 2015.
- McKie, T.: Paleogeographic evolution of latest Permian and Triassic salt basins in Northwest Europe, in: *Permo-Triassic Salt Provinces of Europe, North Africa and the Atlantic Margins*, pp. 159–173, Elsevier, 2017.
- McQuarrie, N. and Van Hinsbergen, D. J.: Retrodeforming the Arabia-Eurasia collision zone: Age of collision versus magnitude of continental subduction, *Geology*, 41, 315–318, <https://doi.org/10.1130/G33591.1>, 2013.
- 510 Mohn, G., Karner, G. D., Manatschal, G., and Johnson, C. A.: Structural and stratigraphic evolution of the Iberia-Newfoundland hyper-extended rifted margin: A quantitative modelling approach, *Geological Society Special Publication*, 413, 53–89, <https://doi.org/10.1144/SP413.9>, 2015.
- Mouthereau, F., Filleaudeau, P. Y., Vacherat, A., Pik, R., Lacombe, O., Fellin, M. G., Castelltort, S., Christophoul, F., and Masini, E.: Placing limits to shortening evolution in the Pyrenees: Role of margin architecture and implications for the Iberia/Europe convergence, *Tectonics*, 33, 2283–2314, <https://doi.org/10.1002/2014TC003663>, 2014.
- 515 Müller, D. R., Cannon, J., Qin, X., Watson, R. J., Gurnis, M., Williams, S., Pfaffelmoser, T., Seton, M., Russell, S. H., and Zahirovic, S.: GPlates: Building a Virtual Earth Through Deep Time, *Geochemistry, Geophysics, Geosystems*, 19, 2243–2261, <https://doi.org/10.1029/2018GC007584>, 2018.
- Müller, D. R., Zahirovic, S., Williams, S. E., Cannon, J., Seton, M., Bower, D. J., Tetley, M. G., Heine, C., Le Breton, E., Liu, S., Russell, S. H., Yang, T., Leonard, J., and Gurnis, M.: A Global Plate Model Including Lithospheric Deformation Along Major Rifts and Orogens Since the Triassic, *Tectonics*, 38, 1884–1907, <https://doi.org/10.1029/2018TC005462>, 2019.
- 520 Müller, R. D., Sdrolias, M., Gaina, C., and Roest, W. R.: Age, spreading rates, and spreading asymmetry of the world’s ocean crust, *Geochemistry, Geophysics, Geosystems*, 9, 1–19, <https://doi.org/10.1029/2007GC001743>, 2008.
- Murillas, J., Mougénot, D., Boillot, G., Comas, M. C., Banda, E., and Mauffret, A.: Structure and evolution of the Galicia Interior Basin (Atlantic western Iberian continental margin), *Tectonophysics*, 184, 297–319, 1990.
- 525 Nirrengarten, M., Manatschal, G., Tugend, J., Kusznir, N. J., and Sauter, D.: Nature and origin of the J-magnetic anomaly offshore Iberia–Newfoundland: implications for plate reconstructions, *Terra Nova*, 29, 20–28, <https://doi.org/10.1111/ter.12240>, 2017.
- Nirrengarten, M., Manatschal, G., Tugend, J., Kusznir, N. J., and Sauter, D.: Kinematic Evolution of the Southern North Atlantic: Implications for the Formation of Hyperextended Rift Systems, *Tectonics*, 37, 89–118, <https://doi.org/10.1002/2017TC004495>, 2018.
- 530 Olivet, J. L.: La cinématique de la plaque ibérique, *Tech. Rep.* 1, 1996.
- Olsen, P. E.: Stratigraphic Record of the Early Mesozoic Breakup of Pangea in the Laurasia-Gondwana Rift System, *Annual Review of Earth and Planetary Sciences*, 25, 337–401, <https://doi.org/10.1146/annurev.earth.25.1.337>, 1997.
- Olyphant, J. R., Johnson, R. A., and Hughes, A. N.: Evolution of the Southern Guinea Plateau: Implications on Guinea-Demerara Plateau formation using insights from seismic, subsidence, and gravity data, *Tectonophysics*, 717, 358–371, <https://doi.org/10.1016/j.tecto.2017.08.036>, 2017.
- 535 Omodeo-Salé, S., Salas, R., Guimerà, J., Ondrak, R., Mas, R., Arribas, J., Suárez-Ruiz, I., and Martínez, L.: Subsidence and thermal history of an inverted Late Jurassic–Early Cretaceous extensional basin (Cáceres, North-central Spain) affected by very low- to low-grade metamorphism, *Basin Research*, 29, 156–174, <https://doi.org/10.1111/bre.12142>, 2017.

- Ortí, F., Pérez-López, A., and Salvany, J. M.: Triassic evaporites of Iberia: Sedimentological and palaeogeographical implications for the western Neotethys evolution during the Middle Triassic–Earliest Jurassic, *Palaeogeography, Palaeoclimatology, Palaeoecology*, 471, 157–180, <https://doi.org/10.1016/j.palaeo.2017.01.025>, 2017.
- Peace, A. L., Phethean, J., Franke, D., Foulger, G., Schiffer, C., Welford, J., McHone, G., Rocchi, S., Schnabel, M., and Doré, A.: A review of Pangaea dispersal and Large Igneous Provinces – In search of a causative mechanism, *Earth-Science Reviews*, p. 102902, <https://doi.org/10.1016/j.earscirev.2019.102902>, 2019a.
- Peace, A. L., Welford, J. K., Ball, P. J., and Nirrengarten, M.: Deformable plate tectonic models of the southern North Atlantic, *Journal of Geodynamics*, 128, 11–37, <https://doi.org/10.1016/j.jog.2019.05.005>, <https://doi.org/10.1016/j.jog.2019.05.005>, 2019b.
- Pereira, R., Alves, T. M., and Mata, J.: Alternating crustal architecture in West Iberia: A review of its significance in the context of NE atlantic rifting, *Journal of the Geological Society*, 174, 522–540, <https://doi.org/10.1144/jgs2016-050>, 2017.
- Phillips, T. B., Jackson, C. A., Bell, R. E., and Duffy, O. B.: Oblique reactivation of lithosphere-scale lineaments controls rift physiography – the upper-crustal expression of the Sorgenfrei – Tornquist Zone , offshore southern Norway, pp. 403–429, 2018.
- Phillips, T. B., Fazlikhani, H., Gawthorpe, R. L., Fossen, H., Jackson, C. A., Bell, R. E., Faleide, J. I., and Rotevatn, A.: The Influence of Structural Inheritance and Multiphase Extension on Rift Development, the Northern North Sea, *Tectonics*, pp. 4099–4126, <https://doi.org/10.1029/2019TC005756>, 2019.
- Puga, E., Fanning, M., Díaz de Federico, A., Nieto, J. M., Beccaluva, L., Bianchini, G., and Díaz Puga, M. A.: Petrology, geochemistry and U-Pb geochronology of the Betic Ophiolites: Inferences for Pangaea break-up and birth of the westernmost Tethys Ocean, *Lithos*, 124, 255–272, <https://doi.org/10.1016/j.lithos.2011.01.002>, <http://dx.doi.org/10.1016/j.lithos.2011.01.002>, 2011.
- Quirk, D. G. and Rüpke, L. H.: Melt-induced buoyancy may explain the elevated rift-rapid sag paradox during breakup of continental plates, *Scientific Reports*, 8, 1–13, <https://doi.org/10.1038/s41598-018-27981-2>, 2018.
- Ramos, A., Fernández, O., Terrinha, P., and Muñoz, J. A.: Extension and inversion structures in the Tethys–Atlantic linkage zone, Algarve Basin, Portugal, *International Journal of Earth Sciences*, 105, 1663–1679, <https://doi.org/10.1007/s00531-015-1280-1>, 2016.
- Rasmussen, E. S., Lomholt, S., Andersen, C., and Vejrbæk, O. V.: Aspects of the structural evolution of the Lusitanian Basin in Portugal and the shelf and slope area offshore Portugal, *Tectonophysics*, 300, 199–225, [https://doi.org/10.1016/S0040-1951\(98\)00241-8](https://doi.org/10.1016/S0040-1951(98)00241-8), 1998.
- Rat, J., Mouthereau, F., Brichau, S., Crémades, A., Bernet, M., Balvay, M., Ganne, J., Lahfid, A., and Gautheron, C.: Tectonothermal Evolution of the Cameros Basin: Implications for Tectonics of North Iberia, *Tectonics*, 38, 440–469, <https://doi.org/10.1029/2018TC005294>, 2019.
- Salas, R. and Casas, A.: Mesozoic extensional tectonics, stratigraphy and crustal evolution during the Alpine cycle of the eastern Iberian basin, *Tectonophysics*, 228, 33–55, [https://doi.org/10.1016/0040-1951\(93\)90213-4](https://doi.org/10.1016/0040-1951(93)90213-4), 1993.
- Salas, R., Guimerà, J., Mas, R., Martín-Closas, C., Melendez, A., and Alonso, A.: Evolution of the Mesozoic Central Iberian Rift System and its Cainozoic inversion (Iberian chain), vol. 186, 2001.
- Sallarès, V., Martínez-Loriente, S., Prada, M., Gràcia, E., Ranero, C., Gutscher, M. A., Bartolome, R., Gailler, A., Dañoibeitia, J. J., and Zitellini, N.: Seismic evidence of exhumed mantle rock basement at the Gorringe Bank and the adjacent Horseshoe and Tagus abyssal plains (SW Iberia), *Earth and Planetary Science Letters*, 365, 120–131, <https://doi.org/10.1016/j.epsl.2013.01.021>, 2013.
- Sánchez-Navas, A., García-Casco, A., Mazzoli, S., and Martín-Algarra, A.: Polymetamorphism in the Alpujarride Complex, Betic Cordillera, South Spain, *The Journal of Geology*, 125, 637–657, <https://doi.org/10.1086/693862>, <https://www.journals.uchicago.edu/doi/10.1086/693862>, 2017.

- Sandoval, L., Welford, J. K., MacMahon, H., and Peace, A. L.: Determining continuous basins across conjugate margins: The East Orphan, Porcupine, and Galicia Interior basins of the southern North Atlantic Ocean, *Marine and Petroleum Geology*, 110, 138–161, <https://doi.org/10.1016/j.marpetgeo.2019.06.047>, <https://doi.org/10.1016/j.marpetgeo.2019.06.047>, 2019.
- 580 Saspiturry, N., Cochelin, B., Razin, P., Leleu, S., Lemirre, B., Bouscary, C., Issautier, B., Serrano, O., Lasseur, E., and Baudin, T.: Tectono-sedimentary evolution of a rift system controlled by Permian post-orogenic extension and metamorphic core complex formation (Bidarray Basin and Ursuya dome, Western Pyrenees), *Tectonophysics*, 768, 228–180, 2019.
- Schaltegger, U., Desmurs, L., Manatschal, G., Müntener, O., Meier, M., Frank, M., and Bernoulli, D.: The transition from rifting to sea-floor spreading within a magma-poor rifted margin: Field and isotopic constraints, *Terra Nova*, 14, 156–162, 2002.
- Schettino, A. and Turco, E.: Tectonic history of the Western Tethys since the Late Triassic, *Bulletin of the Geological Society of America*, 585 123, 89–105, <https://doi.org/10.1130/B30064.1>, 2011.
- Schmid, S. M., Bernoulli, D., Fügenschuh, B., Matenco, L., Schefer, S., Schuster, R., Tischler, M., and Ustaszewski, K.: The Alpine-Carpathian-Dinaridic orogenic system: Correlation and evolution of tectonic units, *Swiss Journal of Geosciences*, 101, 139–183, <https://doi.org/10.1007/s00015-008-1247-3>, 2008.
- Scisciani, V. and Esetime, P.: The Triassic evaporites in the evolution of the Adriatic Basin, in: *Permo-Triassic Salt Provinces of Europe, North Africa and the Atlantic Margins*, pp. 499–516, Elsevier, 2017.
- 590 Seton, M., Müller, R. D., Zahirovic, S., Gaina, C., Torsvik, T. H., Shephard, G. E., Talsma, A., Gurnis, M., Turner, M., Maus, S., and Chandler, M.: Global continental and ocean basin reconstructions since 200Ma, *Earth-Science Reviews*, 113, 212–270, <https://doi.org/10.1016/j.earscirev.2012.03.002>, <http://dx.doi.org/10.1016/j.earscirev.2012.03.002><https://linkinghub.elsevier.com/retrieve/pii/S0012825212000311>, 2012.
- 595 Sibuet, J. C., Srivastava, S. P., and Spakman, W.: Pyrenean orogeny and plate kinematics, *Journal of Geophysical Research: Solid Earth*, 109, 1–18, <https://doi.org/10.1029/2003JB002514>, 2004.
- Silver, P. G., Behn, M. D., Kelley, K., Schmitz, M., and Savage, B.: Understanding cratonic flood basalts, *Earth and Planetary Science Letters*, 245, 190–201, <https://doi.org/10.1016/j.epsl.2006.01.050>, 2006.
- Simon, N. S. and Podladchikov, Y. Y.: The effect of mantle composition on density in the extending lithosphere, *Earth and Planetary Science Letters*, 272, 148–157, <https://doi.org/10.1016/j.epsl.2008.04.027>, 2008.
- 600 Solé, J., Cosca, M., Sharp, Z., and Enrique, P.: 40 Ar/ 39 Ar Geochronology and stable isotope geochemistry of Late-Hercynian intrusions from north-eastern Iberia with implications for argon loss in K-feldspar, *International Journal of Earth Sciences*, 91, 865–881, <https://doi.org/10.1007/s00531-001-0251-x>, <http://link.springer.com/10.1007/s00531-001-0251-x>, 2002.
- Sopeña, A., López, J., Arche, A., Pérez-Arlucea, M., Ramos, A., Virgili, C., and Hernando, S.: Permian and Triassic rift basins of the Iberian Peninsula, in: *Developments in Geotectonics*, vol. 22, pp. 757–786, <https://doi.org/10.1016/B978-0-444-42903-2.50036-1>, <https://linkinghub.elsevier.com/retrieve/pii/B9780444429032500361>, 1988.
- Soto, R., Casas-Sainz, A. M., Oliva-Urcia, B., García-Lasanta, C., Izquierdo-Llavall, E., Moussaid, B., Kullberg, J. C., Román-Berdiel, T., Sánchez-Moya, Y., Sopeña, A., Torres-López, S., Villalán, J. J., El-Ouardi, H., Gil-Peña, I., and Hirt, A. M.: Triassic stretching directions in Iberia and North Africa inferred from magnetic fabrics, *Terra Nova*, 31, 465–478, <https://doi.org/10.1111/ter.12416>, 2019.
- 610 Spooner, C., Stephenson, R., and Butler, R. W.: Pooled subsidence records from numerous wells reveal variations in pre-break-up rifting along the proximal domains of the Iberia-Newfoundland continental margins, *Geological Magazine*, 156, 1323–1333, <https://doi.org/10.1017/S0016756818000651>, 2019.

- Stampfli, G. M. and Borel, G. D.: A plate tectonic model for the Paleozoic and Mesozoic constrained by dynamic plate boundaries and restored synthetic oceanic isochrons, *Earth and Planetary Science Letters*, 196, 17–33, [https://doi.org/10.1016/S0012-821X\(01\)00588-X](https://doi.org/10.1016/S0012-821X(01)00588-X), 2002.
- Stampfli, G. M., Mosar, J., Favre, P., Pillecuit, A., and Vannay, J.-C.: Permo-Mesozoic evolution of the western Tethyan realm: the Neotethys/East- Mediterranean connection, in: *Peri-Tethys Memoir 6: Peri-Tethyan Rift/Wrench Basins and Passive Margins*, edited by Ziegler, P. A., Cavazza, W., Robertson, A. H. F., and Crasquin-Soleau, S., vol. 186, pp. 51–108, *Mémoires du Muséum d'Histoire Naturelle*, Paris, 2001.
- Štolfova, K. and Shannon, P. M.: Permo-Triassic development from Ireland to Norway: basin architecture and regional controls, *Geological Journal*, 44, 652–676, 2009.
- Tankard, A. J. and Welsink, H. J.: Extensional tectonics and stratigraphy of Hibernia oil field, Grand Banks, Newfoundland, *AAPG Bulletin*, 71, 1210–1232, 1987.
- Tavani, S. and Granado, P.: Along-strike evolution of folding, stretching and breaching of supra-salt strata in the Plataforma Burgalesa extensional forced fold system (northern Spain), *Basin Research*, 27, 573–585, <https://doi.org/10.1111/bre.12089>, 2015.
- Tavani, S., Quintà, A., and Granado, P.: Tectonophysics Cenozoic right-lateral wrench tectonics in the Western Pyrenees (Spain): The Ubierna Fault System, *Tectonophysics*, 509, 238–253, <https://doi.org/10.1016/j.tecto.2011.06.013>, <http://dx.doi.org/10.1016/j.tecto.2011.06.013>, 2011.
- Tavani, S., Bertok, C., Granado, P., Piana, F., Salas, R., Vigna, B., and Muñoz, J. A.: The Iberia-Eurasia plate boundary east of the Pyrenees, *Earth-Science Reviews*, 187, 314–337, <https://doi.org/10.1016/j.earscirev.2018.10.008>, 2018.
- Tugend, J., Manatschal, G., Kuszniir, N. J., Masini, E., Mohn, G., and Thinn, I.: Formation and deformation of hyperextended rift systems: Insights from rift domain mapping in the Bay of Biscay-Pyrenees, *Tectonics*, 33, 1239–1276, <https://doi.org/10.1002/2014TC003529>, <http://doi.wiley.com/10.1002/2014TC003529>, 2014.
- Tugend, J., Manatschal, G., and Kuszniir, N. J.: Spatial and temporal evolution of hyperextended rift systems: Implication for the nature, kinematics, and timing of the Iberian- European plate boundary, *Geology*, 43, 15–18, <https://doi.org/10.1130/G36072.1>, 2015.
- Tugend, J., Chamot-Rooke, N., Arsenikos, S., Blanpied, C., and Frizon de Lamotte, D.: Geology of the Ionian Basin and Margins: A Key to the East Mediterranean Geodynamics, *Tectonics*, 38, 2668–2702, <https://doi.org/10.1029/2018TC005472>, 2019.
- Upton, B. G. J., Stephenson, D., Smedley, P. M., Wallis, S. M., and Fitton, J. G.: Carboniferous and Permian magmatism in Scotland, *Geological Society, London, Special Publications*, 223, 195–218, 2004.
- Vacherat, A., Mouthereau, F., Pik, R., Huyghe, D., Paquette, J. L., Christophoul, F., Loget, N., and Tibari, B.: Rift-to-collision sediment routing in the Pyrenees: A synthesis from sedimentological, geochronological and kinematic constraints, *Earth-Science Reviews*, 172, 43–74, <https://doi.org/10.1016/j.earscirev.2017.07.004>, <http://dx.doi.org/10.1016/j.earscirev.2017.07.004>, 2017.
- Van Hinsbergen, D. J. J., Torsvik, T. H., Schmid, S. M., Mañenco, L. C., Maffione, M., Vissers, R., Gürer, D., and Spakman, W.: Orogenic architecture of the Mediterranean region and kinematic reconstruction of its tectonic evolution since the Triassic, 2019.
- Van Wees, J. D., Arche, A., Beijdorff, C. G., López-Gómez, J., and Cloetingh, S. A.: Temporal and spatial variations in tectonic subsidence in the Iberian Basin (eastern Spain): Inferences from automated forward modelling of high-resolution stratigraphy (Permian-Mesozoic), *Tectonophysics*, 300, 285–310, [https://doi.org/10.1016/S0040-1951\(98\)00244-3](https://doi.org/10.1016/S0040-1951(98)00244-3), 1998.
- Van Wees, J. D., Stephenson, R., Ziegler, P. A., Bayer, U., McCann, T., Dadlez, R., Gaupp, R., Narkiewicz, M., Bitzer, F., and Scheck, M.: On the origin of the southern Permian Basin, Central Europe, *Marine and Petroleum Geology*, 17, 43–59, 2000.

- 650 Vergés, J., Poprawski, Y., Almar, Y., Drzewiecki, P. A., Moragas, M., Bover-Arnal, T., Macchiavelli, C., Wright, W., Messenger, G., Embry, J.-C., et al.: Tectono-Sedimentary Evolution of Jurassic-Cretaceous diapiric structures: Miravete anticline, Maestrat Basin, Spain, *Basin Research*, 2020.
- Vissers, R.: Variscan extension in the Pyrenees, *Tectonics*, 11, 1369–1384, 1992.
- Vissers, R. and Meijer, P.: Mesozoic rotation of Iberia: Subduction in the Pyrenees?, *Earth-Science Reviews*, 110, 93–110, <https://doi.org/10.1016/j.earscirev.2011.11.001>, <http://dx.doi.org/10.1016/j.earscirev.2011.11.001><https://linkinghub.elsevier.com/retrieve/pii/S0012825211001644>, 2012.
- 655 Watts, A. B.: *Isostasy and Flexure of the Lithosphere*, Cambridge University Press, 2001.
- Welsink, H. J., Dwyer, J. D., and Knight, R. J.: Tectono-Stratigraphy of the Passive Margin Off Nova Scotia: Chapter 14: North American Margins, 1989.
- 660 Ziegler, P. A.: Geodynamic model for Alpine intra-plate compressional deformation in Western and Central Europe, in: *Inversion Tectonics*, edited by Cooper, M. A. and Williams, G. D., vol. 3, pp. 63–85, Geological Society Special Publication, 1989.
- Ziegler, P. A.: Collision related intra-plate compression deformations in Western and Central Europe, *Journal of Geodynamics*, 11, 357–388, 1990.
- Ziegler, P. A. and Dèzes, P.: Crustal evolution of Western and Central Europe, *Geological Society Memoir*, 32, 43–56, <https://doi.org/10.1144/GSL.MEM.2006.032.01.03>, 2006.
- 665 Ziegler, P. A., Schumacher, M. E., Dèzes, P., van Wees, J. D., and Cloetingh, S. A.: Post-Variscan evolution of the lithosphere in the Rhine Graben area: Constraints from subsidence modelling, *Geological Society Special Publication*, 223, 289–317, <https://doi.org/10.1144/GSL.SP.2004.223.01.13>, 2004.

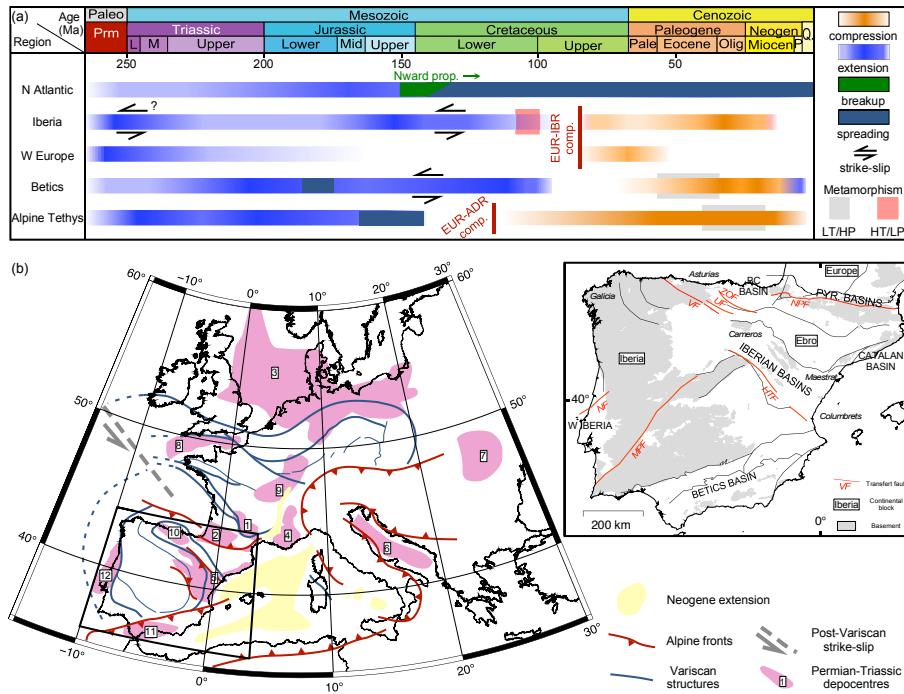


Figure 1. Geodynamic chart and localization of the study area. (a): Geodynamic chart of the main structural areas of the Iberian domain. BCB: Basque-Cantabrian basin. (b) Location map of West Europe, showing the areas that are deformed in compression and extension and Permian-Triassic depocenters. 1: French Massif Central; 2: Aquitaine Basin and Pyrenees; 3: Germanic Basin; 4: South East France; 5: Iberian Basin; 6: Italy; 7: Central Europe; 8: English Channel; 9: North East France; 10: Basque-Cantabrian Basin; 11: Betics; 12: West Iberia. Inset: Map of Iberia showing the main structures and transforms (red) and sedimentary basins (capitalized and italicized text) and sub-basins (italicized text). BC: Basque-Cantabrian; HTF: High tagus Fault; MPF: Messejana-Plasencia Fault; NF: Nazaré Fault; NPF: North Pyrenean Fault; PYR: Pyrenean; UF: Ubierna Fault; VF: Ventaniella Fault; ZOF: Zamanza-Oña Fault.

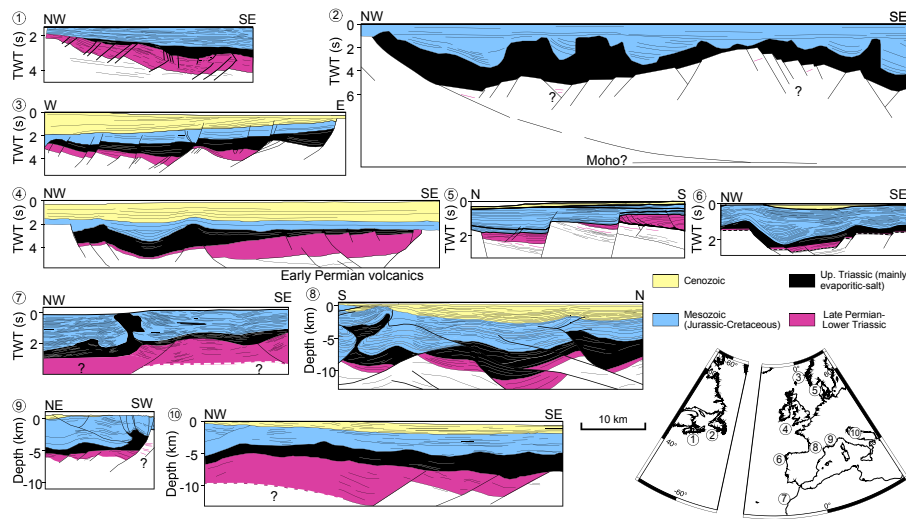


Figure 2. Compilation of interpreted seismic profiles along the North Atlantic margins and in West Europe. 1: Deptuck and Kendell (2017); 2: Balkwill and Legall (1989); 3-4: McKie (2017); 5: Philipps et al. (2019); 6: Rasmussen et al. (1996); 7: Hafid (2000); 8: Espurt et al. (2019); 9: Bestani et al. (2016); 10: Scisciani and Esestime (2017).

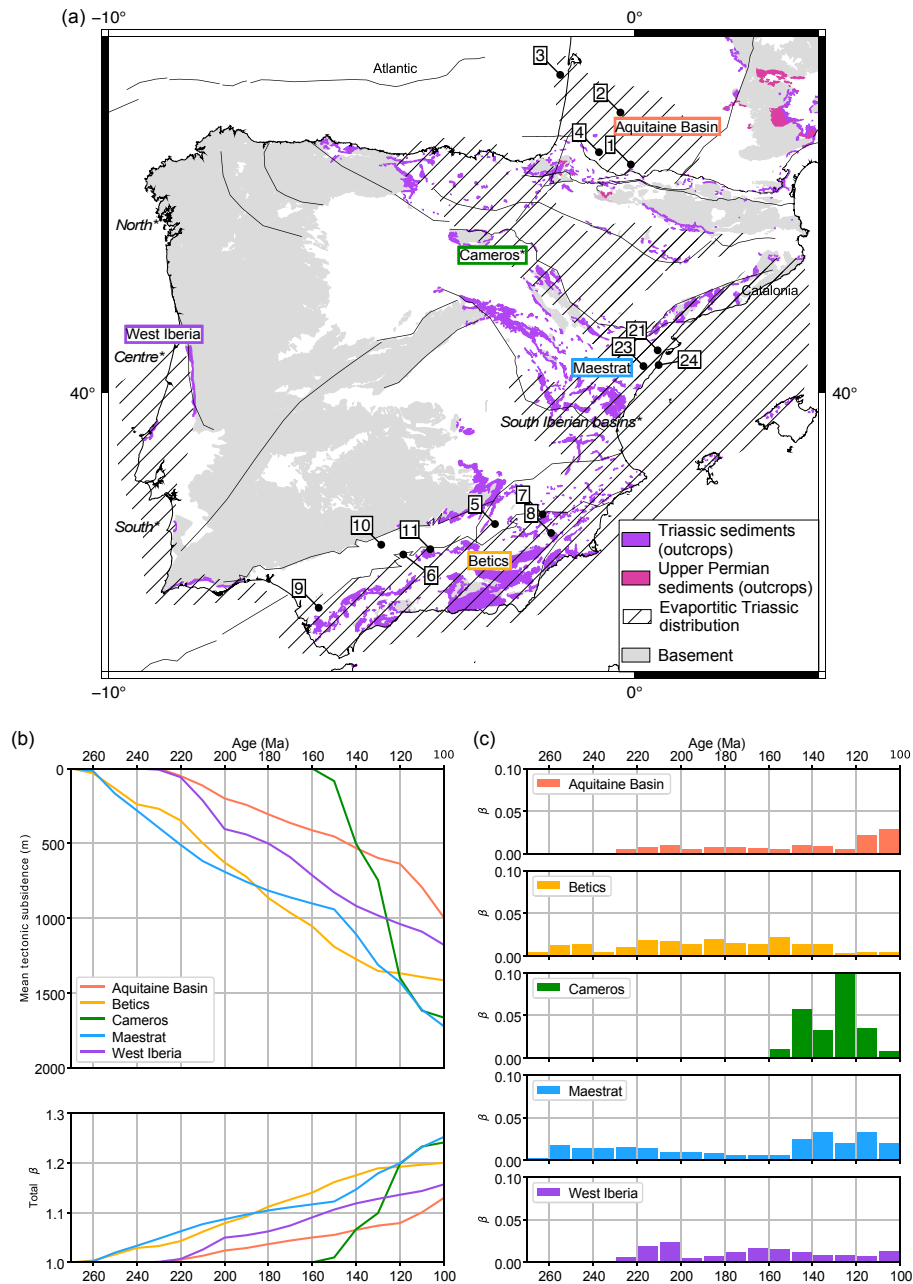


Figure 3. Late Permian-Triassic deposits and subsidence analyses. (a) Map of the Upper Permian-Triassic sediment outcrops, main depocenters, and distribution of the Upper Triassic evaporitic sequence in Iberia and southwest France. (b) Top: Mean tectonic subsidence curves in the Aquitaine Basin (Brunet, 1984), Betics (Hanne et al., 2003), Cameros basin (Salas and Casas, 1993; Salas et al., 2001; Omodeo-Sale et al., 2017), Maestrat basin (Salas and Casas, 1993; Salas et al., 2001) and West Iberia (Spooner et al., 2018). See Supplementary Material for individual tectonic subsidence curves in each region. 1: Ger1; 2: Lacquy1; 3: Sextant1; 4: Lacq301; 5: Santiago de la Espada; 6: Nueva Carteya1; 7: Rio Segura G1; 8: Espugna; 9: Betica 18-1; 10: Rio Guadalquivir; 11: Fusanta; 12: Lazaro; 13: Fuentatoba*; 14: Poveda*; 15: Cameros2*; 16: Enciso*; 17: Rollamienta*; 18: Castellijo*; 19: Molino*; 20: Yanguas*; 21: Mirambell; 22: Amposta Marino C3; 23: Salzedella; 24: Maestrazgo; 25: South Iberian Basin; 26: W-Iberia S27; 27: W-Iberia C; 28: W-Iberia N. Synthetic well (shown by *) are not represented on the map. Bottom: Total stretching factor (β) (isostatic calculation, Watts, 2001) calculated from the mean tectonic subsidence of each region. (c) Incremental stretching factor (β) with a 10 Myr time step.

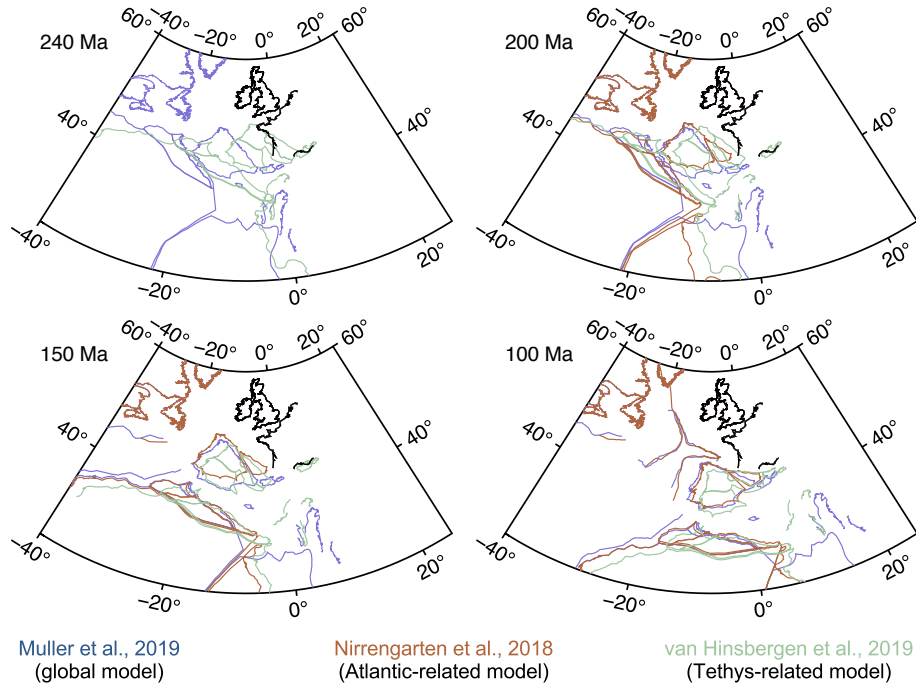


Figure 4. Compilation of previous global (Müller et al., 2018), Atlantic-related (Nirrengarten et al., 2018), or Tethys-related (Van Hinsbergen et al., 2019) kinematics reconstructions used in our reconstruction, at 240 Ma (a), 200 Ma (b), 150 Ma (c), and 100 Ma (d). Note that the Nirrengarten et al. (2018) reconstruction is not shown at 240 Ma as represented in their model.

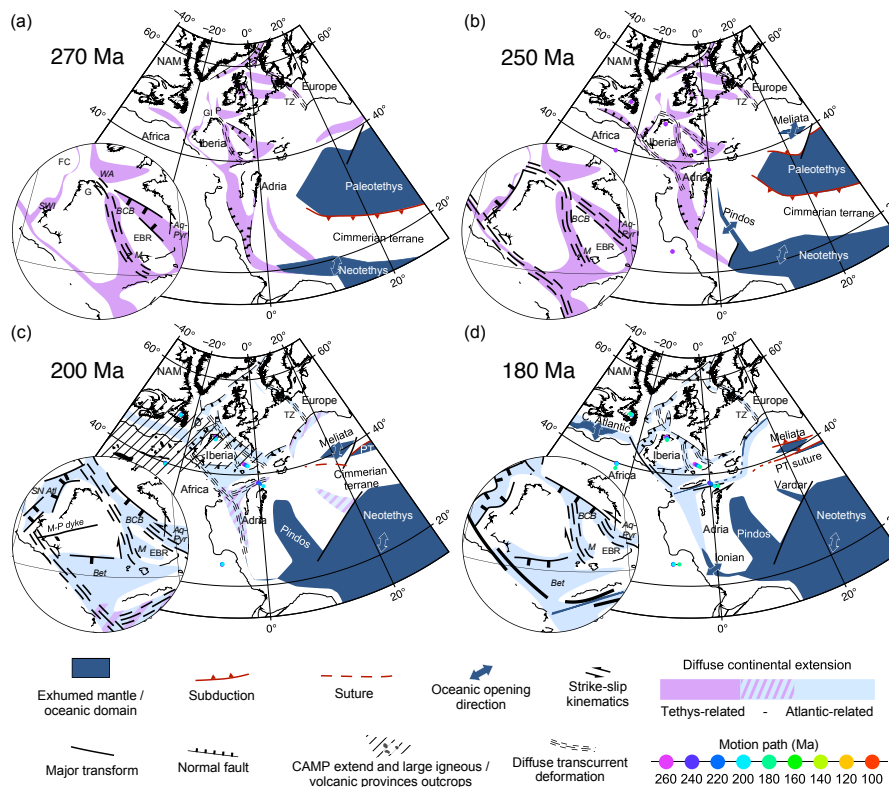


Figure 5. Large-scale reconstruction of the Tethys-Atlantic area for the 270 Ma (a), 250 Ma (b), 200 Ma (c), and 180 Ma (d) periods. Maps are in orthographic projection. Close up shows on the evolution of the Iberia plate and the Ebro continental block. Colored background shows diffuse or ill-defined deformation (extension or transtension) in the continents, associated with the evolution of the Tethys (Paleo- and Neotethys, purple) or the Atlantic (blue). At 200 Ma, the hatched area represents the CAMP extend. Aq-Pyr: Aquitain-Pyrenean basin; BCB: Basque-Cantabrian basin; Bet: Betics basin; EBR: Ebro; FC: Flemish Cap; G: Galicia; GI: Galicia Interior basin; M: Maestrat; M-P: Messejaña-Plascencia; MV: Midland Valley rift; NS: North Sea rift; O: Orphan basin; P: Porcupine basin; PT: Paleotethys; SN Atl: southern North Atlantic; SWI: Southwest Iberia; TZ: Tornquist Zone; WA: Western Approaches.

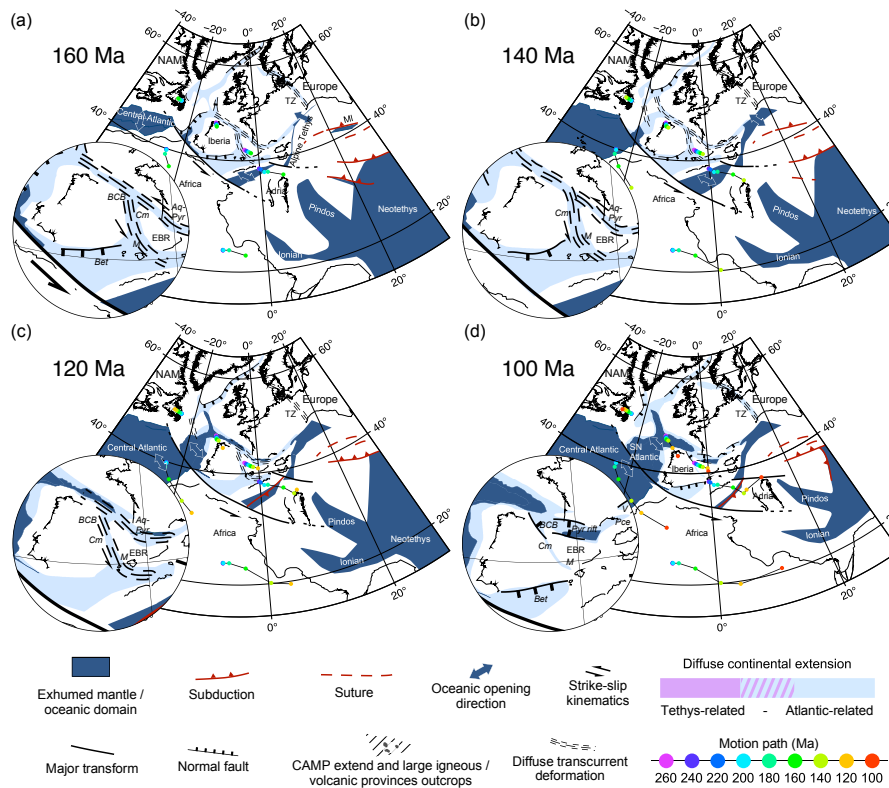


Figure 6. Large-scale reconstruction of the Tethys-Atlantic area for the 160 Ma (a), 140 Ma (b), 120 Ma (c), and 100 Ma (d) periods. Maps are in orthographic projection. Close up shows on the evolution of the Iberia plate and the Ebro continental block. Colored background shows diffuse or ill-defined deformation (extension or transtension) in the continents, associated with the evolution of the Tethys (Paleo- and Neotethys, purple) or the Atlantic (blue). Aq-Pyr: Aquitain-Pyrenean basin; BCB: Basque-Cantabrian basin; Bet: Betics basin; Cm: Cameros; EBR: Ebro; M: Maestrat; MI: Meliata; Pce: Provence basin; V: Valaisan basin; TZ: Tornquist Zone.

Table 1. Rotation poles of the main plates or continental blocks used in the study. Poles with no references are from this study. See the complete list in the GPIates rotation file in Supplementary Materials. References: a: Nirrengarten et al. (2018); b: Müller et al. (2019); c: Heine et al. (2013).

Age (Ma)	Latitude	Longitude	Angle	Fixed plate	Ref	Age (Ma)	Latitude	Longitude	Angle	Fixed plate	Ref
North America											
83.0	76.81	-20.59	29.51	NW AFR	a	Ebro block					
120.4	66.28	-19.82	54.44	NW AFR	a	0.0	90.0	0.0	0.0	EUR	
126.7	66.11	-18.95	56.48	NW AFR	a	20.0	90.0	0.0	0.0	EUR	
131.9	65.95	-18.5	57.45	NW AFR	a	66.0	40.1807	8.7194	5.606	EUR	
139.6	66.12	-18.38	59.9	NW AFR	a	84.0	-41.0445	136.3388	2.8866	EUR	
147.7	66.54	-17.98	62.08	NW AFR	a	94.0	-41.0445	136.3388	2.8866	EUR	
154.3	67.15	-15.98	64.75	NW AFR	a	118.0	-45.8785	165.4893	4.2288	EUR	
170.0	67.09	-13.86	70.55	NW AFR	a	145.0	-62.2857	170.8607	4.5896	EUR	
190.0	64.31	-15.19	77.09	NW AFR	a	270.0	-58.2298	-176.5352	11.1943	EUR	
203.0	64.28	-14.74	78.05	NW AFR	a	Southwest Iberia					
270.0	64.28	-14.74	78.05	NW AFR	a	84.0	-28.0047	-158.3184	-0.9344		
Flemish Cap											
112.0	90.0	0.0	0.0	NAM	a	100.0	-36.3872	156.7264	0.6206	WIB	
140.0	45.28	-53.47	20.03	NAM	a	120.0	29.0472	91.4916	-0.257	WIB	
160.0	44.65	-54.79	18.83	NAM	a	130.0	-43.3609	171.3962	10.9309	WIB	
200.0	42.8694	-54.8782	17.7035	NAM	a	145.0	-45.4085	167.4179	8.8479	WIB	
270.0	42.8694	-54.8782	17.7035	NAM	a	150.0	47.1092	-9.648	-7.8087	WIB	
Europe											
79.1	63.4	147.75	-18.48	NAM	a	270.0	45.8739	-8.1058	-9.9091	WIB	
120.0	68.01	153.59	-21.01	NAM	a	Adria					
200.0	71.41	152.6	-23.68	NAM	a	100.0	-26.5	-166.58	7.73	APU	b
270.0	71.41	152.6	-23.68	NAM	a	120.0	-26.5	-166.58	7.73	APU	b
West Iberia (Galicia)											
86.0	-40.18	170.57	10.07	EUR		250.0	-26.5	-166.58	7.73	APU	b
120.0	-47.9216	179.85	22.8717	EUR		270.0	-26.5	-166.58	7.73	APU	
135.0	-49.5226	-177.8405	27.0209	EUR		Northwest Africa					
140.0	-49.695	-177.3636	27.3079	EUR		0.0	90.0	0.0	0.0	NE AFR	c
150.0	-50.3915	-177.3963	27.8356	EUR		110.0	90.0	0.0	0.0	NE AFR	c
270.0	50.9548	5.1656	-28.4002	EUR		145.0	25.21	5.47	2.87	NE AFR	c
						231.0	25.21	5.47	2.87	NE AFR	c
						270.0	25.21	5.47	2.87	NE AFR	c

Table 2. Geodynamic and timing constrains used in the kinematic reconstruction model.

Domain	Area	Event/kinematics	Age (Ma)	References
Central Europe	Germanic/Polish Basin Torqu coast Zone	Continental rifting Right-lateral Left-lateral Right-lateral	270 (?) to 250 Carboniferous to 250 (?) 170 145 to 125	Evan et al., 1990; Van Wees et al., 2000; Evans et al., 2003; Jackson et al., 2019 Phillips et al., 2019 Phillips et al., 2019 Hippolyte, 2002; Phillips et al., 2019
	West Europe (France)	Continental rifting Continental rifting - left lateral Hyper-extended rifting - left-lateral	270 (?) to 145 ; 125 to 94 270 (?) to 145 125 to 94	Cumelle, 1983; Bruet, 1984; Bieau et al., 2006; Serrano et al., 2006 Cumelle, 1983; Lucas, 1995 Vielzeuf and Kornprobst, 1984; Golberg and Leyreloup, 1990; Lagabrielle et al., 2010
Iberia	Basque-Cantabrian Basin Ebro Basin Iberian Range	Left-lateral Continental rifting Continental rifting - left lateral Hyper-extended rifting	140 to 120 270 (?) to 145 270 (?) to 145 150 to 120	Quinana et al., 2015; Zamora et al., 2017; Nirengarten et al., 2018 Vargas et al., 2009 Salas and Casas, 1993 Salas and Casas, 1993; Arche and Gomez, 1996; Salas et al., 2001; Omoleo-Sale et al., 2017; Rat et al., 2019
Southern North Atlantic	W Galicia Bay of Biscay Southwest Iberia	Continental rifting Lithospheric mantle exhumation Initiation of oceanic spreading Mantle exhumation Oceanic spreading Continental rifting Mantle exhumation Initiation of oceanic spreading	200 to 145 135-115 133-100 160 to 130 124-112 to 83 200 to 161 145 135-133 (Gorringe Bank)	Murillas et al., 1990 Mohr et al., 2015 Olivet, 1996; Srivastava et al., 2000; Schettino & Turco, 2009; Whitmarsh and Manatschal, 2012 Thinov et al., 2001; Tugend et al., 2014 Thinov, 2002; Sibuet et al., 2004; Tugend et al., 2015 Murillas et al., 1990 Sallares et al., 2013 Sallares et al., 2013
North Sea	Arctic rift system Rockall/Porcupine Orphan	Continental rifting Continental rifting Continental rifting	290 (?) to 200 230 (?) to 112 270 to 112	Evans et al., 2003 Evans et al., 2003 Nirengarten et al., 2018; Hassan et al., 2019; Sandoval et al., 2019
Tethys & peri-Tethys	S Alpine Tethys N Alpine Tethys Paleotethys Neotethys sensu stricto Ionian Vindar Pindos Melita	Continental rifting Breakup Oceanic spreading Subduction Oceanic spreading Subduction Continental rifting Oceanic spreading Oceanic spreading Subduction Oceanic spreading Subduction Subduction	270 to 220 180 170-161 early Carboniferous to 200 Early Permian (?) - from 156 270 to 200 (?) onset at 180 ? 180 to 160 (?) 145 to 110 250 to 200 from Late Cretaceous 220 to 200 180 to 160 (?)	Stampfli and Borel, 2002; Schmid et al., 2008; Scisciani and Eserstine, 2017 Schmid et al., 2008; Puga et al., 2011; Maroni et al., 2017 Bill et al., 2001; Schalegger et al., 2002 Stampfli et al., 2001; Stampfli and Borel, 2002; Evans et al., 2003 Van Hinsbergen et al., 2019 Schmid et al., 2008; Van Hinsbergen et al., 2019 Muttoni et al., 2001; Tugend et al., 2019 Tugend et al., 2019 Channell & Kozur, 1997 Channell and Kozur, 1997 Channell and Kozur, 2001; Schmid et al., 2008 Channell and Kozur, 1997 Channell and Kozur, 2001; Schmid et al., 2008 Stampfli et al., 2001; Schmid et al., 2008 Channell and Kozur, 1997
Central Atlantic		Continental rifting Oceanic spreading	250 to 200 190 to 175	Kueller et al., 2012 Labails et al., 2010; Olyphant et al., 2017

Table 3. Quantification of strike-slip displacement between the European and Ebro and between the Iberia (Galicia) and Ebro.

	IBERIA-EBRO			EUROPE-EBRO		
Age (Ma)	Amount (km)	Rate (km.Ma ⁻¹)	Direction	Amount (km)	Rate (km.Ma ⁻¹)	Direction
270-250	12	0.6	right-lateral	16	0.8	left-lateral
250-200	33	0.7	right-lateral	74	1.5	left-lateral
200-180	17	0.9	right-lateral	19	1.0	left-lateral
180-160	5	0.3	right-lateral	24	1.2	left-lateral
160-140	4	0.2	left-lateral	43	2.2	left-lateral
140-120	62	3.1	left-lateral	99	5.0	left-lateral
120-100	179	9.0	left-lateral	19	1.0	left-lateral
TOTAL	67 km (right-lateral)					
	245 km (left-lateral)			278 km (left-lateral)		