



Timescales of chemical equilibrium between the convecting solid mantle and over-/underlying magma oceans

Daniela Paz Bolrão¹, Maxim Dionys Ballmer^{2,1}, Adrien Morison³, Antoine Billy Rozel¹, Patrick Sanan¹, Stéphane Labrosse³, and Paul James Tackley¹

¹Institute of Geophysics, ETH Zurich, 8092 Zurich, Switzerland

²Department of Earth Sciences, University College London, London, WC1E 6BT, United Kingdom

³Université de Lyon, ENSL, UCBL, CNRS, LGL-TPE, 46 allée d'Italie, F-69364 Lyon, France

Correspondence: Daniela Paz Bolrão (daniela.bolrao@erdw.ethz.ch)

Abstract. After accretion and formation, terrestrial planets go through at least one magma ocean episode. As the magma ocean crystallises, it creates the first layer of solid rocky mantle. Two different scenarios of magma ocean crystallisation involve that the solid mantle either (1) first appears at the core-mantle boundary and grows upwards, or (2) appears at mid-mantle depth and grows in both directions. Regardless of the magma ocean freezing scenario, the composition of the solid mantle and liquid reservoirs continuously change due to fractional crystallisation. This chemical fractionation has important implications for the long-term thermo-chemical evolution of the mantle, as well as its present-day dynamics and composition. In this work we use numerical models to study convection in a solid mantle bounded at either or both boundaries by magma ocean(s), and in particular, the related consequences for large-scale chemical fractionation. We use a parameterisation of fractional crystallisation of the magma ocean(s) and (re-)melting of solid material at the interface between these reservoirs. When these crystallisation/re-melting processes are taken into account, convection in the solid mantle occurs readily and is dominated by large wavelengths. Related material transfer across the mantle magma-ocean boundaries promotes chemical equilibrium, and prevents extreme enrichment of the last-stage magma ocean (as would otherwise occur due to pure fractional crystallisation). The timescale of equilibration depends on the convective vigour of mantle convection and on the efficiency of material transfer between the solid mantle and magma ocean(s). For Earth, this timescale is comparable to that of magma ocean crystallisation suggested in previous studies (Lebrun et al., 2013), which may explain why the Earth's mantle is rather homogeneous in composition, as supported by geophysical constraints.

1 Introduction

The early Earth experienced at least one episode of extensive silicate melting, also known as magma ocean (e.g., Abe and Matsui, 1988; Abe, 1993; Solomatov and Stevenson, 1993a; Abe, 1997; Solomatov, 2000; Drake, 2000; Elkins-Tanton, 2012). A magma ocean was likely formed due to the energy released during the Moon-forming giant impact (Tonks and Melosh, 1993;



Ćuk and Stewart, 2012; Canup, 2012), core formation (Flasar and Birch, 1973), radiogenic heating (Urey, 1956), electromagnetic induction heating (Sonett et al., 1968), and tidal heating (Sears, 1992). Due to the presence of an early atmosphere (Abe and Matsui, 1986; Hamano et al., 2013), it was sustained for thousands (Solomatov, 2000) to millions of years (Abe, 1997; 25 Lebrun et al., 2013).

As the magma ocean cools and its temperature drops below the liquidus, crystals start to appear to consolidate a first layer of solid cumulates, i.e., the solid part of the mantle. Because the shape of the liquidus (and solidus) relative to the isentropic temperature profile is not well constrained, the depth at which initial crystallisation occurs remains unknown: this depth may be anywhere between the Core-Mantle Boundary (CMB) (e.g., Abe, 1997; Solomatov, 2015), and mid-mantle depths (Labrosse 30 et al., 2007; Stixrude et al., 2009; Nomura et al., 2011; Labrosse et al., 2015; Boukaré et al., 2015; Caracas et al., 2019). Depending on this depth, several distinct scenarios of magma ocean evolution are expected to occur.

If crystallisation of the magma ocean starts at the CMB, the first layer of solid cumulates forms at the bottom of this magma ocean (Fig. 1a). As the temperature of the ocean decreases, the crystallisation front steadily progresses upwards, creating more and more solid cumulates. When the crystallisation front reaches the surface of the planet, the solid mantle of the Earth is fully 35 formed.

Assuming that the temperature of solid cumulates stays close to that of the solidus, these solid cumulates are thermally unstable since the solidus is steeper than the isentrope. Assuming as well that some degree of fractional crystallisation occurs (Solomatov and Stevenson, 1993b; Brown et al., 2014; Elkins-Tanton et al., 2003), the magma ocean becomes progressively enriched in iron silicates (FeO), since iron behaves like a mildly incompatible element (Murakami and Bass, 2011; Nomura 40 et al., 2011; Andrault et al., 2012; Tateno et al., 2014). Accordingly, the solid cumulates (initially enriched in MgO) that form in chemical equilibrium with the overlying magma ocean incorporate progressively more FeO with time and, as a result, become denser with time. Therefore, on top of being thermally unstable, the solid cumulates are also gravitationally unstable due to composition. This leads to a large-scale overturn after magma ocean crystallisation (Elkins-Tanton et al., 2003, 2005), or multiple small-scale overturns during crystallisation (Maurice et al., 2017; Ballmer et al., 2017b; Boukaré et al., 2018; Morison 45 et al., 2019; Miyazaki and Korenaga, 2019b). Such overturn(s) may lead to re-melting of FeO-enriched material at depth, as the adiabat is steeper than the melting curve through most of the mantle.

This dense remelted material may form a Basal Magma Ocean (BMO) (Labrosse et al., 2015), join an already existing one (Labrosse et al., 2007) (see below), or react with the underlying solid mantle (Ballmer et al., 2017b). Hence, the solid mantle may evolve from being bounded above by only one magma ocean, the Top Magma Ocean (TMO), towards being bounded 50 by two magma oceans, TMO and BMO, depending on the fate of overturned cumulates. Ultimately, the TMO is expected to completely crystallise, potentially leaving a long-lived BMO after the final overturn of the most FeO-enriched cumulates. Because the overturning events are potentially swift and of large scale nature, the resulting solid mantle and magma oceans are not necessarily in chemical equilibrium.

If crystallisation of the magma ocean instead starts somewhere at mid-mantle depths and the crystals formed are near- 55 neutrally buoyant (Labrosse et al., 2007; Boukaré et al., 2015), the first layer of solid mantle forms and separates the magma ocean into TMO and BMO (Fig. 1b). Then, two crystallisation fronts move in opposite directions: the TMO front progresses

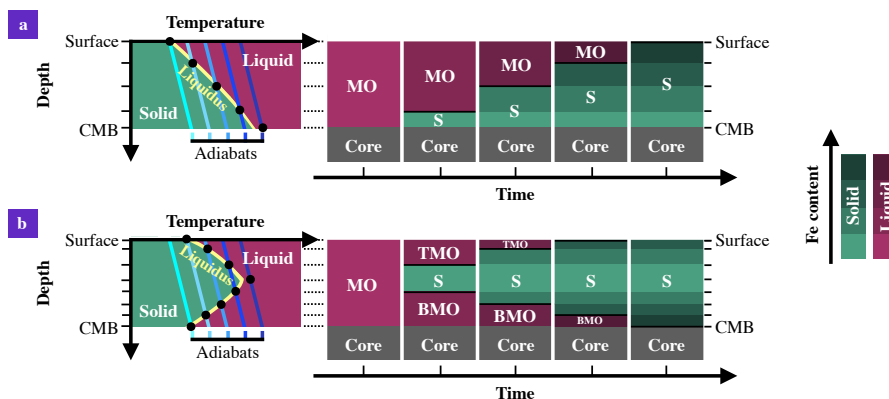


Figure 1. Sketches of Magma Ocean (MO) crystallisation scenarios. As cooling of the MO proceeds, adiabats (blue lines) cross the liquidus (yellow curve), and the Solid mantle (S) appears, either a) near the Core-Mantle Boundary (CMB), or b) somewhere at mid-mantle depths. In b) the MO is divided in Top Magma Ocean (TMO) and Basal Magma Ocean (BMO) as soon as the solid appears. In both scenarios, liquid and solid cumulates get enriched in Fe with time, which may lead to an overturn of solid material (not depicted, see text for details). Mush is not considered. Note: The liquidus curve of b) is not to scale; it is horizontally exaggerated for clarity.

upwards until it reaches the surface of the planet, and the BMO front progresses downwards until it reaches the CMB. In this process, both TMO and BMO, as well as the related cumulates, become progressively enriched in FeO. In contrast to the TMO cumulates (see above), BMO cumulates are likely formed over much longer timescales (Labrosse et al., 2007) and are expected to form a stable density profile. By the time the BMO is fully crystallised, a dense stable solid layer may persist at the base of the mantle. This dense layer may explain seismic observations that point to the existence of thermo-chemical piles near the CMB (Masters et al., 2000; Ni and Helmberger, 2001; Garnero and McNamara, 2008; Deschamps et al., 2012; Labrosse et al., 2015; Ballmer et al., 2016).

Along these lines, the chemical evolution of the solid mantle depends on the history of early planetary melting and crystallisation. This is a history with either one or two magma oceans, and with convection in the solid mantle driven by unstable thermal and/or chemical stratification, probably while magma ocean(s) at the top and/or bottom are still present. While any such convection would imply re-melting of solid cumulates, the related consequences for mantle evolution are poorly understood. Only a few numerical modelling studies have explicitly incorporated coupled re-melting and crystallisation at the magma ocean mantle boundary or boundaries (Labrosse et al., 2018; Morison et al., 2019; Agrusta et al., 2019), and none of these studies have explored the consequences for chemical evolution.

In this paper we use a numerical model to investigate the thermo-chemical evolution of the solid mantle in contact with a TMO and/or a BMO. We consider that convection in the solid mantle starts before the end of magma ocean crystallisation, therefore, dynamic topographies that may form at either or both solid mantle-magma ocean boundaries can melt or crystallise. We do not explicitly account for the progression of the crystallisation front(s). However, we test several evolution scenarios and different magma oceans thicknesses. We determine the timescales of chemical equilibrium between the magma ocean(s)

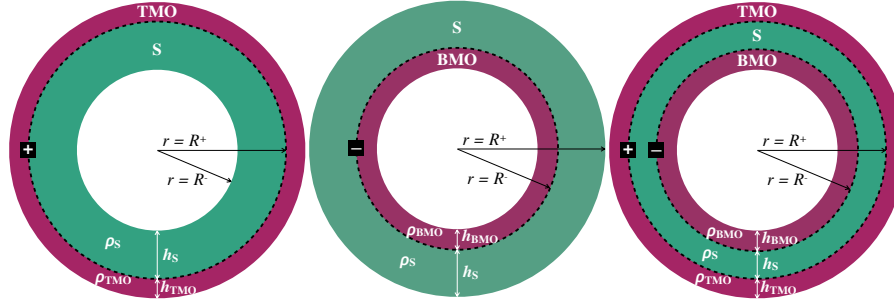


Figure 2. Sketches of three possible evolution scenarios: Solid mantle (S) bound by left) Top Magma Ocean (TMO), middle) Basal Magma Ocean (BMO) and right) TMO and BMO. Solid mantle is taken as a spherical shell with density ρ_S , thickness h_S , inner radius R^- , and outer radius R^+ . TMO and BMO are taken with densities ρ_{TMO} and ρ_{BMO} , and thicknesses h_{TMO} and h_{BMO} , respectively. Superscripts “+” and “-” at the boundaries refer to the boundary between TMO and solid mantle, and solid mantle and BMO, respectively.

and the solid mantle, and compare them with those of progression of the crystallisation front (e.g., Lebrun et al., 2013). For simplicity, we hereafter use the term *solid-liquid phase changes* interchangeably with fractional crystallisation and melting processes at the interface between the solid mantle and TMO and/or BMO.

2 Numerical model

80 2.1 Problem definition

We use the finite-volume/finite-difference method with the convection code StagYY (Tackley, 2008), to model the thermo-chemical evolution of the solid mantle during magma ocean crystallisation. We test three possible scenarios of evolution: solid mantle bounded above by a TMO and/or below by a BMO (Fig. 2). We assume steady crystallisation front(s) and test magma ocean thicknesses of 100, 500 and 1000 km. When both oceans are present, they can only be of 100 and/or 500 km thickness
 85 each.

We assume that the solid mantle is an infinite Prandtl number fluid. We ensure mechanical stability between the solid mantle and magma oceans, i.e., $\rho_{TMO} < \rho_S < \rho_{BMO}$, with ρ_{TMO} , ρ_S and ρ_{BMO} the densities of the TMO, solid mantle and BMO, respectively. We take gravitational acceleration, g , viscosity, η , thermal diffusivity, κ , heat capacity, C_p , thermal expansion coefficient, α , and compositional expansion coefficient, β , as constant. We make equations dimensionless to reduce the number
 90 of parameters that describe the physical problem. Dimensions of distance, time and temperature can be recovered using, respectively, the thickness of the solid mantle, h_S , the thermal diffusive timescale, $\frac{h_S^2}{\kappa}$, and the temperature difference between bottom and top solid mantle boundaries, $\Delta T = T^- - T^+$. The dimensionless temperature, T , is defined as:

$$T = \frac{T' - T^+}{\Delta T} \quad (1)$$



We assume incompressibility in the Boussinesq approximation (e.g., Chandrasekhar, 1961). Therefore mass, energy, com-
 95 position and momentum conservation equations are written as:

$$\nabla \cdot \mathbf{u} = 0 \quad (2)$$

$$\frac{\partial T}{\partial t} + \mathbf{u} \cdot \nabla T = \nabla^2 T \quad (3)$$

$$\frac{\partial X_{\text{FeO}}^{\text{S}}}{\partial t} + \mathbf{u} \cdot \nabla X_{\text{FeO}}^{\text{S}} = 0 \quad (4)$$

$$-\nabla p + \nabla^2 \mathbf{u} + \text{Ra} \left(T - \langle T \rangle - \text{B} (X_{\text{FeO}}^{\text{S}} - \langle X_{\text{FeO}}^{\text{S}} \rangle) \right) \hat{\mathbf{r}} = 0 \quad (5)$$

100 with \mathbf{u} the velocity field, $\langle T \rangle$ the lateral average of the temperature field T , t the time, $X_{\text{FeO}}^{\text{S}}$ the FeO molar content in the solid
 mantle, $\langle X_{\text{FeO}}^{\text{S}} \rangle$ the lateral average of $X_{\text{FeO}}^{\text{S}}$, p the dynamic pressure, Ra the Rayleigh number and B the buoyancy number. The
 last two are defined respectively as:

$$\text{Ra} = \frac{\rho g \alpha \Delta T h_{\text{S}}^3}{\eta \kappa}, \quad (6)$$

$$\text{B} = \frac{\beta}{\alpha \Delta T}. \quad (7)$$

105 In this study we consider that magma oceans and solid mantle are made only of (Fe, Mg)O (see section 2.3 for more details).
 We consider a buoyancy number of $\text{B} = 1.0$. We set temperature to 1.0 and 0.0, respectively, at the bottom and top solid domain
 boundaries.

The solid domain is represented using the spherical annulus geometry (Hernlund and Tackley, 2008), composed of a grid of
 512 × 128 cells, in which Eq. (2) – Eq. (5) are solved. Composition is advected by tracers. We assume that each magma ocean
 110 is well-mixed and that its dynamics are fast compared to that of the solid mantle. In our setup, magma oceans are treated as
 simple 0D compositional reservoirs at solid mantle boundaries. We hereafter use superscripts ‘+’ and ‘−’ to refer, respectively,
 to top and bottom solid mantle boundaries. In equations, the sign ‘±’ reads as ‘+’ if a TMO is considered, and ‘−’ if a BMO is
 considered. The subscript ‘_{MO}’ refers to Magma Ocean. Thus, when we introduce a quantity, e.g. ξ , related to a magma ocean,
 we introduce it as ξ_{MO}^{\pm} , with $\xi_{\text{MO}}^+ = \xi_{\text{TMO}}$ relating to the TMO, and $\xi_{\text{MO}}^- = \xi_{\text{BMO}}$ relating to the BMO.

115 2.2 Dynamic topography and the phase change boundary condition

Since convection in the solid mantle likely starts before the end of magma ocean crystallisation (Maurice et al., 2017; Ballmer
 et al., 2017b; Boukaré et al., 2018; Morison et al., 2019; Miyazaki and Korenaga, 2019b), dynamic topographies are supported



at either or both solid mantle boundaries. The timescale for producing dynamic topography is given by τ_η . This topography
can be eroded by solid-liquid phase changes on a timescale related to the transfer of energy and FeO through the magma ocean,
120 from material that is crystallising to material that is melting. We denoted this timescale by τ_ϕ .

The relative values of the two timescales, τ_η and τ_ϕ , control the dynamical behaviour of the boundary. If $\tau_\eta \ll \tau_\phi$, dynamic
topography can build before being erased by the phase change. In this case, dynamic topography is only limited by the balance
between viscous stress in the solid and the buoyancy associated with the topography. In the limit of small topographies, this
leads to the classical non-penetrating free-slip boundary condition in which the radial velocity of the solid effectively goes to 0
125 at the boundary (Ricard et al., 2014). On the other hand, if $\tau_\eta \gg \tau_\phi$, the topography is erased faster by phase changes than it can
be built by viscous stress in the solid. Consequently, this removes the stress imposed by the topography and the associated limit
to the radial velocity. These processes are incorporated into our boundary condition, described by the phase change number,

$$\Phi = \frac{\tau_\phi}{\tau_\eta}, \quad (8)$$

considering that when $\Phi \rightarrow \infty$, dynamic topography is built (or relaxes) by viscous forces, and when $\Phi \rightarrow 0$ it is eroded
130 by melting or fractional crystallisation processes (Deguen, 2013; Deguen et al., 2013). The related phase-change boundary
condition in dimensionless form, at either or both solid mantle boundaries is:

$$2 \frac{\partial u_r}{\partial r} - p \pm \Phi^\pm u_r = 0 \quad (9)$$

with u_r the vertical velocity of the flow in the solid mantle. On one hand, this boundary condition can act like a non-penetrating
free-slip boundary condition when $\Phi \rightarrow \infty$, since vertical velocities of the solid flow tend to 0 at the boundaries. Under this
135 boundary condition, transfer of material across a solid mantle-magma ocean boundary cannot occur. On the other hand, this
boundary condition can act as being “open” to phase changes when $\Phi \rightarrow 0$, since these vertical velocities will be non zero at
the solid mantle-magma ocean boundary, and a significant flux of solid and liquid material can cross it to melt and crystallise.
Hence, transfer of material across the phase-change boundary is efficient. In the extreme case of $\Phi = 0$, this boundary condition
corresponds to free in- and outflow.

140 The specific value of Φ is difficult to constrain (because τ_ϕ is non-trivial to determine), and also is expected to vary with
time (i.e., because τ_η depends on the thickness of the solid mantle) (Deguen, 2013; Deguen et al., 2013). However, for a
purely thermal case, Morison et al. (2019) and Morison (2019) estimate $\Phi^+ \sim 10^{-5}$ and $\Phi^- \sim 10^{-3}$ for the Earth. Therefore,
significant transfer of material across the solid-mantle magma-ocean boundaries is expected. But also consider that real multi-
phase rocks typically melt over large pressure ranges, unless for truly eutectic bulk compositions. The depleted residue of
145 mantle melting may somewhat restrict the efficiency of material transfer across the solid mantle magma-ocean boundaries,
depending on the efficiency of melt-solid segregation near the boundaries. In addition to the expected temporal evolution of
 Φ^\pm , this potential restriction motivates our exploration of a broad range of Φ^\pm . In this study we use 7 values of Φ^\pm that range
from 10^{-1} to 10^5 . We use $\Phi = 10^{-1}$ as the lowest value possible for Φ^\pm because the resolution of the thermal boundary layer
is computationally demanding once Φ^\pm decreases below 10^{-1} .

150 Deguen et al. (2013) and Labrosse et al. (2018) found that the critical Rayleigh number, Ra_c , for the solid mantle is strongly
sensitive to Φ and the setup considered, i.e., having a TMO and/or a BMO, as well as to the thickness of the solid layer. For



instance, if the solid mantle is bounded by a TMO of 100 km and $\Phi \rightarrow \infty$, Ra_c is on the order of 10^3 , but for small Φ , is on the order of 10^2 . Ra_c can even decrease to arbitrarily small values on the order of $\sim \Phi$ if a TMO and BMO are both considered. Therefore, we also systematically vary the Rayleigh number, Ra , which controls the convective vigour of the mantle. We choose
 155 Ra as multiples of Ra_c , according to the super-criticality factor, SC :

$$Ra = Ra_c \times SC. \quad (10)$$

We use 4 values of SC ranging from 10^2 to 10^5 .

2.3 Compositional treatment

In this study we consider a simplified compositional model with only two components, FeO and MgO, which are thought
 160 to represent the Fe-rich and Mg-rich end-members of mantle silicates. We simulate melting of solid material when dynamic topography develops outside the solid domain, assuming that no fractionation operates when the solid melts, i.e., all (Fe,Mg)O present in this topography goes into the magma ocean.

We simulate crystallisation of the magma ocean when negative dynamic topography develops in the solid domain. The composition of the solid created is related to that of the liquid by fractional crystallisation. Therefore, only a fraction of FeO
 165 goes into the solid. This fraction is given by the distribution coefficient, K :

$$K = \frac{X_{FeO}^S X_{MgO}^{MO}}{X_{FeO}^{MO} X_{MgO}^S} \quad (11)$$

where X_{FeO}^S and X_{MgO}^{MO} , and X_{MgO}^S and X_{FeO}^{MO} are the FeO and MgO molar content in the solid and magma ocean parts, respectively. We consider mass balance between FeO and MgO in the solid mantle and magma oceans; therefore, $X_{FeO}^S + X_{MgO}^S = 1$ and $X_{FeO}^{MO} + X_{MgO}^{MO} = 1$. We assume $K = 0.3$ (e.g., Corgne and Wood, 2005; Liebske et al., 2005).

170 In this paper, we attempt to estimate the characteristic timescale to establish chemical equilibrium between the solid mantle and the magma ocean(s). But, because chemical equilibrium would take too long to reach in a reasonable run time, we look for the timescale to reach chemical half-equilibrium (as similar to a half-life). Assuming a full equilibrium between the solid mantle and magma oceans (superscript "Eq"), the FeO content in the bulk, X_{FeO}^{Bulk} , can be expressed as function of the volumes (V_S , V_{TMO} and V_{BMO}) and the FeO content ($X_{FeO}^{S,Eq}$, $X_{FeO}^{TMO,Eq}$ and $X_{FeO}^{BMO,Eq}$) in the solid mantle and magma oceans,

$$175 X_{FeO}^{Bulk} = \frac{X_{FeO}^{TMO,Eq} V_{TMO} + X_{FeO}^{BMO,Eq} V_{BMO} + X_{FeO}^{S,Eq} V_S}{V_{TMO} + V_{BMO} + V_S}. \quad (12)$$

From Eq. (11) and Eq. (12) one can find the FeO content in the solid mantle when it is in chemical equilibrium with the magma ocean(s):

$$X_{FeO}^{S,Eq} = \frac{b + \sqrt{b^2 - 4ac}}{2a}, \quad (13)$$



where:

$$\begin{aligned}
 180 \quad a &= V_S(1 - K), \\
 b &= V_{TMO} + V_{BMO} + V_S K - X_{FeO}^{Bulk}(V_{TMO} + V_{BMO} + V_S)(1 - K), \\
 c &= -X_{FeO}^{Bulk} K(V_{TMO} + V_{BMO} + V_S).
 \end{aligned}$$

Starting with a FeO content in the solid mantle equal to $X_{FeO}^{S, Ini}$, the half-equilibrium is reached when the solid mantle reaches the content $X_{FeO}^{S, Eq/2}$, defined as:

$$185 \quad X_{FeO}^{S, Eq/2} = \frac{X_{FeO}^{S, Ini} + X_{FeO}^{S, Eq}}{2}. \quad (14)$$

We denote by $t^{S, Eq/2}$ the time at which the solid mantle reaches chemical half-equilibrium, $t^{S, Eq/2} = t(X_{FeO}^{S, Eq/2})$.

Previous studies suggest that the Fe content of the present day bulk silicate Earth is 0.113 (Taylor and McLennan, 1985) or 0.107 (McDonough and Sun, 1995). We suppose that some of the Fe could migrate to the core with time (e.g., Nguyen et al., 2018) and therefore, in this study we use $X_{FeO}^{Bulk} = 0.120$. We start the simulations with a homogeneous FeO content in the solid
 190 mantle and magma ocean(s), $X_{FeO}^{S, Ini} = X_{FeO}^{TMO, Ini} = X_{FeO}^{BMO, Ini} = 0.120$. Although this initial composition is not consistent with the fractional crystallisation assumed in this problem, it serves well our goal of measuring the timescale to reach chemical equilibrium between solid and liquid reservoirs.

3 Results

3.1 Chemical evolution of the mantle bound on top by a TMO

195 In this subsection we investigate how the chemical evolution of the solid mantle is affected by the efficiency of mass transfer across the phase-change boundary, as controlled by Φ . As mentioned in the previous section, low values of Φ correspond to efficient material transfer across the phase-change boundaries, and high values of Φ correspond to inefficient material transfer, similar to classical convection. We analyse first the case of a solid mantle bound above by a TMO, as the most straightforward scenario for early planetary evolution. In the end of this subsection we briefly compare this scenario with the ones where the
 200 solid mantle is in contact with just a BMO and with both magma oceans.

Because the parameter space explored in this paper is vast, we illustrate here as an example the chemical evolution of a solid mantle bounded by a TMO of 500 km, under three different values of phase change number, $\Phi^+ = 10^{-1}, 10^2, 10^3$, at the same super-criticality value of $SC = 10^5$. As the critical Rayleigh number, Ra_c , decreases as Φ^+ decreases, these three cases have different values of Rayleigh number, Ra . Hence, for $\Phi^+ = 10^{-1}, 10^2, 10^3$, $Ra = 100 \times 10^5, 635 \times 10^5, 687 \times 10^5$, respectively.
 205 According to Eq. (12) and Eq. (13), the expected FeO content in each reservoir in chemical equilibrium would be approximately $X_{FeO}^{S, Eq} = 0.082$ and $X_{FeO}^{TMO, Eq} = 0.229$. Since we initialise each reservoir with a FeO content of $X_{FeO}^{S, Ini} = X_{FeO}^{TMO, Ini} = 0.120$, the system does not start in chemical equilibrium. We determine the time needed to reach chemical half-equilibrium.

Figure 3 shows the chemical evolution in dimensionless time of these three cases. Our models predict that regardless of the value of Φ^+ , the FeO content in the solid mantle decreases towards $X_{FeO}^{S, Eq}$, and the FeO content in the TMO increases towards

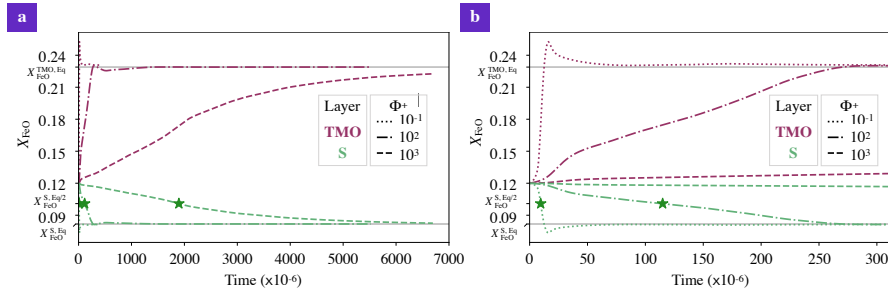


Figure 3. a) Evolution of the FeO content, X_{FeO} , in the solid mantle (S, green) and top magma ocean of 500 km (TMO, pink), with dimensionless time. We test three different values of phase change number, $\Phi^+ = 10^{-1}, 10^2, 10^3$ (different lines). Green stars correspond to the point where FeO content in chemical half-equilibrium in the solid mantle, $X_{\text{FeO}}^{\text{S,Eq/2}}$, is reached. In these simulations super-criticality is $\text{SC} = 10^5$. b) Zoom of figure a) in the beginning of evolution.

210 $X_{\text{FeO}}^{\text{TMO,Eq}}$, which puts the solid mantle and the TMO in a state close to chemical equilibrium (but not chemical homogeneity as seen later). However, the lower the value of Φ^+ , the faster half-equilibrium is reached, since it effectively increases the exchange of material between reservoirs. We calculate the time needed to reach chemical half-equilibrium, $t^{\text{S,Eq/2}}$, which is $t^{\text{S,Eq/2}} = 9.567 \times 10^{-6}, 114.927 \times 10^{-6}$ and 1895.471×10^{-6} for $\Phi^+ = 10^{-1}, 10^2$ and 10^3 , respectively.

In Fig. 4 we present snapshots of FeO content in the solid mantle for these three cases of Φ^+ . Our models show that
 215 dynamics in the solid mantle is very different between cases. With $\Phi^+ = 10^{-1}$ (Fig. 4a), mantle flow is dominated by degree-1 convection, which persists stably for the whole simulation time. With this pattern of convection, there is an upwelling of primordial material (in yellow) that melts on one hemisphere, while material from the TMO crystallises at the boundary and forms a downwelling on the other hemisphere (in blue). This downwelling is FeO depleted, which introduces a strong heterogeneity in the solid mantle. Degree-1 convection involves very little deformation, which explains the existence of a
 220 considerable amount of primordial material in the solid mantle, even around the time at which chemical half-equilibrium occurs (snapshot inside red box). As Φ^+ increases (Fig. 4b and Fig. 4c), higher degree modes of convection with several convection cells appear. Although the composition of the TMO and the average composition of the solid mantle tend to mutual chemical equilibrium in all three cases, chemical homogeneity across the solid mantle is not necessarily reached.

Our models show that for other evolution scenarios, i.e., solid mantle in contact with just a BMO and with a TMO and BMO,
 225 the system also evolves to a state close to chemical equilibrium but not chemical homogeneity. In Fig. 5 we present snapshots of FeO content in the solid mantle for different evolution scenarios at about the time of chemical half-equilibrium. When the solid mantle is in contact with just a BMO, material from the magma ocean crystallises at the boundary and forms upwellings (in blue). This material is FeO depleted and, similarly to the TMO case, introduces a strong heterogeneity in the solid mantle around the half-equilibrium time. When the solid mantle is in contact with both oceans, convection occurs with degree-1, i.e.,
 230 material of the TMO and of the BMO crystallises at the corresponding boundary and forms a downwelling (in blue) and an upwelling (in blue and green), respectively. Note that in this scenario, since the volume of the BMO is smaller than that of the

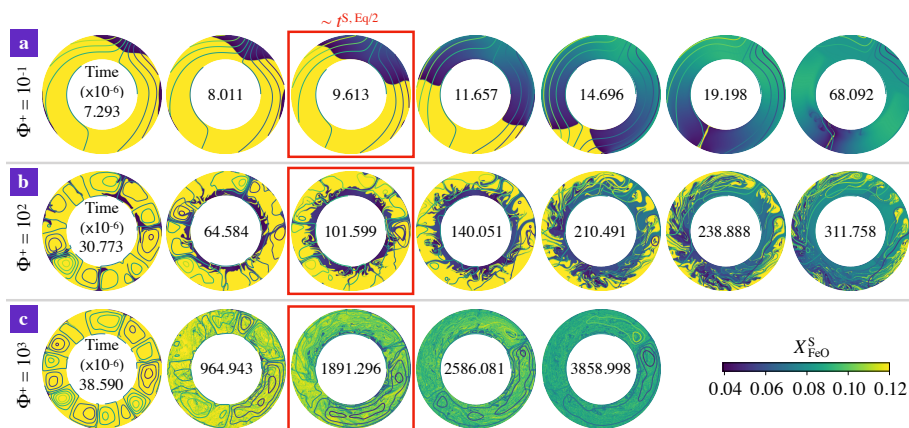


Figure 4. Snapshots of FeO content in the solid mantle, $X_{\text{FeO}}^{\text{S}}$, as function of dimensionless time (factor of 10^{-6} inside each annulus) for the cases presented in Fig. 3. a) $\Phi^+ = 10^{-1}$, b) $\Phi^+ = 10^2$ and c) $\Phi^+ = 10^3$. In these simulations the top magma ocean thickness is 500 km, and there is no basal magma ocean. Super-criticality is $\text{SC} = 10^5$ in all three cases shown. Snapshots with a red box indicate that the model time is close to the chemical half-equilibrium time, $t^{\text{S, Eq}/2}$. For $\Phi^+ = 10^{-1}$, 10^2 and 10^3 , $t^{\text{S, Eq}/2} = 9.567 \times 10^{-6}$, 114.927×10^{-6} and 1895.471×10^{-6} , respectively. Contours correspond to the streamlines of the flow.

TMO, the BMO composition changes rapidly. Therefore, the composition of the upwelling changes rapidly as well (colours from blue to green). The degree-1 pattern of convection persists stably for the whole simulation time.

3.2 Timescales of chemical half-equilibrium between the solid mantle and magma ocean(s)

235 Figure 6 shows the timescales of chemical half-equilibrium for the scenarios explored in the previous subsection. For a wide range of SC and Φ^{\pm} , these timescales are shown for a solid mantle bounded by a TMO of 500 km thickness (Fig. 6a), by a BMO of 500 km thickness (Fig. 6b), and by a TMO and a BMO of 500 km and 100 km thickness, respectively (Fig. 6c). For all evolution scenarios, models predict that timescales of chemical half-equilibrium decrease for decreasing Φ^{\pm} . In other words, chemical half-equilibration is more efficient for efficient material transfer across the solid mantle-magma ocean boundaries.

240 Our results also show that the timescales of chemical half-equilibration are similar (i.e., of the same order of magnitude) for a given SC and Φ^{\pm} ranging between 10^{-1} and 10^1 , independent of the evolution scenario. This shows that below $\Phi^{\pm} = 10^1$ a regime with efficient material transfer across the solid mantle-magma ocean boundaries is established. The transition to the regime of inefficient material transfer (i.e., in which mantle flow is limited by viscous building of dynamic topography) occurs somewhere between $\Phi^{\pm} = 10^1$ and 10^2 . In this regime, timescales of half-equilibration systematically increase with Φ^{\pm} . Our

245 models predict that this transition between regimes occurs over a similar interval of Φ^{\pm} for other thicknesses of TMO and/or BMO.

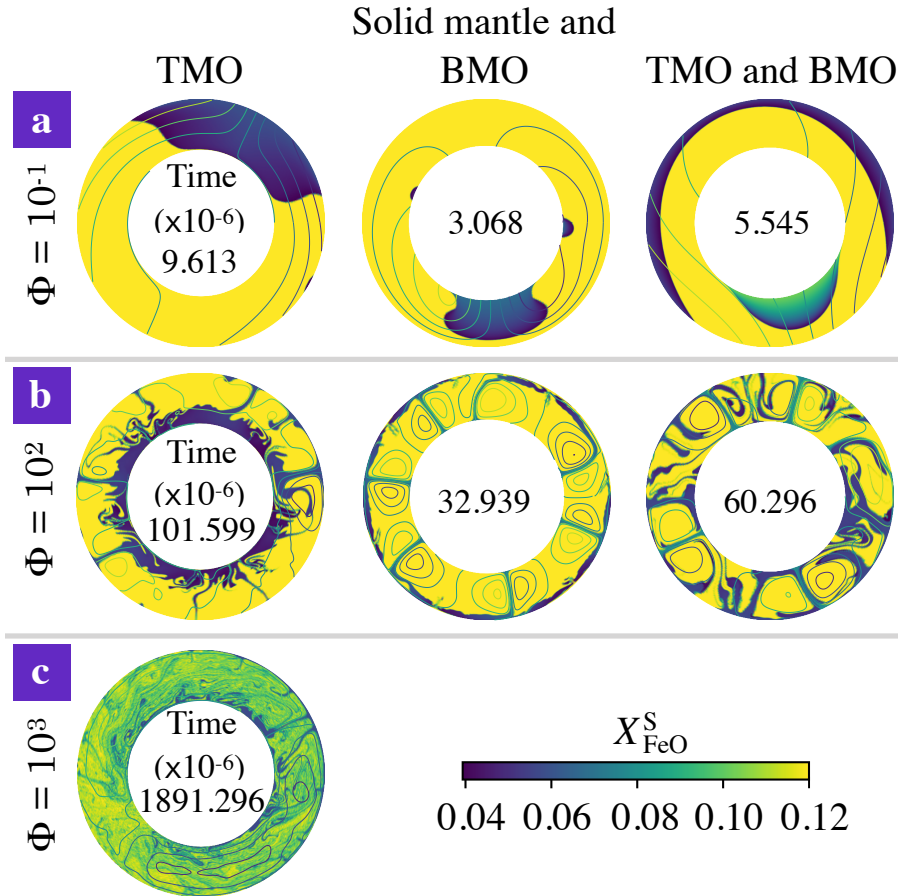


Figure 5. Snapshots of FeO content in the solid mantle, X_{FeO}^S , close to the time at which the system reaches chemical half-equilibrium (time is dimensionless with a factor of 10^{-6} inside each annulus), for a) $\Phi = 10^{-1}$, b) $\Phi = 10^2$ and c) $\Phi = 10^3$. The solid mantle is in contact with left) a top magma ocean (TMO) of 500 km, middle) a basal magma ocean (BMO) of 500 km, and right) a TMO of 500 km and a BMO of 100 km. Super-criticality is $SC = 10^5$ in all cases shown. Contours correspond to the streamlines of the flow. Cases with $\Phi = 10^3$ for a solid mantle in contact with only BMO and with TMO and BMO, did not reach chemical half-equilibrium.

To obtain an empirical scaling law, we fit the predicted timescales, $t_{\text{pred}}^{S, \text{Eq}/2}$, for all simulations that reached chemical half-equilibrium. The fitting equation provides $t_{\text{pred}}^{S, \text{Eq}/2}$ in dimensionless form as a function of Ra, Φ^\pm and V_S :

$$t_{\text{pred}}^{S, \text{Eq}/2} = \max \left[a_0 \text{Ra}^{a_1} \left(\frac{\Phi^\pm}{10} \right)^{a_2} \left(\frac{V_S}{V_M} \right)^{a_3}, a_4 \text{Ra}^{a_5} \left(\frac{\Phi^\pm}{10} \right)^{a_6} \left(\frac{V_S}{V_M} \right)^{a_7} \right] \quad (15)$$

250 with V_M the volume of the present-day Earth's mantle. Coefficients of this equation can be found in Table 1. Equation (15) presents two branches, each corresponding to a different regime: the left branch corresponds to the regime of efficient material transfer across the solid mantle-magma ocean boundaries, and the right one to the regime of inefficient material transfer. In Fig. 7, we show the timescales to reach chemical half-equilibrium as a function of Ra for our model predictions (circles) vs.

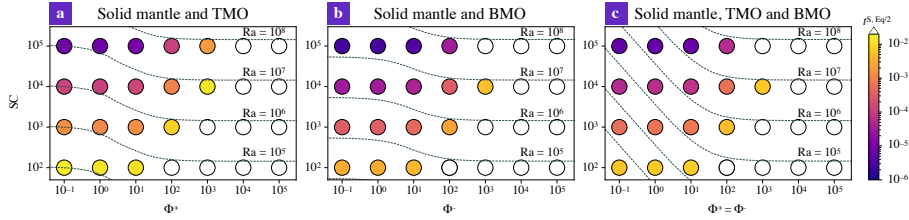


Figure 6. Timescales to reach chemical half-equilibrium, $t^{S, Eq/2}$ (in different colours) between the solid mantle and a) a top magma ocean (TMO) of 500 km, b) a basal magma ocean (BMO) of 500 km, and c) a TMO of 500 km and BMO of 100 km, for different values of super-criticality, $SC = 10^2 - 10^5$ (Ra is indicated by dashed lines), and phase change number, $\Phi = 10^{-1} - 10^5$. White colours are cases that did not reach chemical half-equilibrium within a reasonable run time.

Table 1. Results of the regressions of the timescales of chemical half-equilibration using the form: $t_{pred}^{S, Eq/2} = \max \left[a_0 Ra^{a_1} \left(\frac{\Phi \pm}{10} \right)^{a_2} \left(\frac{V_S}{V_M} \right)^{a_3}, a_4 Ra^{a_5} \left(\frac{\Phi \pm}{10} \right)^{a_6} \left(\frac{V_S}{V_M} \right)^{a_7} \right]$. The regression method is detailed in Appendix A.

Regime	Coefficient	Solid mantle in contact with		
		TMO	BMO	TMO and BMO
Solid-liquid phase changes	a_0	464.850	103.146	100.473
	a_1	-1.042	-1.008	-1.000
	a_2	0.313	0.176	0.948
	a_3	-0.994	-1.326	-0.646
Viscous building	a_4	12.075	20.743	48.481
	a_5	-0.884	-0.972	-0.999
	a_6	1.214	1.208	1.195
	a_7	-2.584	-7.278	-2.583
	error (%)	28.3	21.2	22.4

our empirical scaling law (lines), demonstrating a good agreement between the two. In the Appendix A of this paper, this agreement is further demonstrated by showing the global fitting function (Fig. A1).

Our models predict that in the regime of efficient material transfer (i.e., for low values of Φ), timescales to reach chemical half-equilibrium are virtually unaffected by the volume of the solid mantle (or in other words, by the volume of the magma ocean(s)). The volume of the solid only systematically affects the timescales once the regime shifts to the one of inefficient material transfer. This conclusion is independent of evolution scenario.

Comparing the timescales to reach chemical half-equilibrium between two evolution scenarios, we find that they are about a factor of 3 larger for a solid mantle in contact with just a TMO (Fig. 7a) than for a solid mantle with just a BMO (Fig. 7b). This finding can be explained by the fact that the geometry of the problem is different in both cases. Although the TMO and the

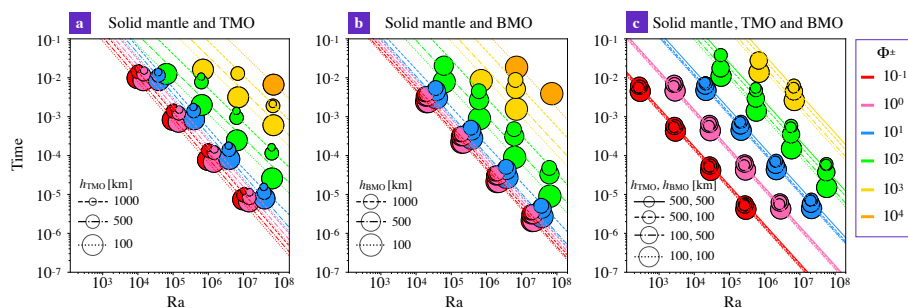


Figure 7. Timescales to reach chemical half-equilibrium (dimensionless) versus Rayleigh number, Ra , given by simulations of this study (circles) and by the fitting equation, Eq. (15), (lines), for a solid mantle in contact with a) a top magma ocean (TMO), b) a basal magma ocean (BMO), and c) a TMO and BMO. Thicknesses of each ocean are indicated in the corresponding panel. Different colours indicate the corresponding phase change number, Φ .

BMO have the same thickness, the volume of the TMO is larger than that of the BMO by roughly a factor of 3, which explains the increased duration to reach the half-equilibrium FeO content in the magma ocean.

265 Comparing the scenario of a solid mantle in contact with just a TMO (Fig. 7a) with that of a solid mantle in contact with a TMO and BMO (Fig. 7c), models predict that timescales in the latter scenario are roughly 2 orders of magnitude smaller than the former scenario for a given Rayleigh number. This result is explained by two effects. The critical Rayleigh number is much lower when two magma oceans are present than when only one is present. In principle, when both magma oceans are present, the critical Rayleigh number can even be arbitrarily low as Φ^\pm decreases towards 0 (Labrosse et al., 2018). Moreover, Agrusta et al. (2019) show that the heat flow and RMS velocity in the solid mantle vary linearly with Ra when both magma oceans are present, whereas heat flow and RMS velocity in the solid mantle vary as $Ra^{1/3}$ and $Ra^{2/3}$, respectively, in the case of only one magma ocean present. This further increases the difference between the two scenarios at a given value of the Rayleigh number. Therefore, one should expect that the timescales to reach chemical half-equilibrium may be arbitrarily low, depending on the efficiency of material transfer across the BMO-mantle and TMO-mantle boundaries.

275 3.3 Chemical half-equilibrium and crystallisation timescales

In this subsection we compare the timescales to reach chemical half-equilibrium between a solid mantle and a TMO of a given thickness, with timescales of crystallisation of such a TMO as calculated for the Earth case. The timescales of TMO crystallisation (i.e., before reaching the mush stage) are given by Lebrun et al. (2013), hereinafter denoted by t_{L13}^C .

280 We take the solid mantle bounded on top by a TMO of 100, 500 and 1000 km thickness, and use Eq. (15) to determine the timescales of half-equilibration as a function of phase change number, Φ^+ . In an attempt to apply our fitting equation to Earth, we assume that the global Rayleigh number of the early-Earth mantle just after solidification of the TMO is between $Ra_M = 10^8$ and $Ra_M = 10^9$. Ra_M is calculated on the basis of the total thickness of the solid mantle, $h_M = 2890$ km. The Rayleigh number, Ra , used in Eq. (15) is then re-scaled to the actual thickness of the solid mantle (i.e., before solidification of

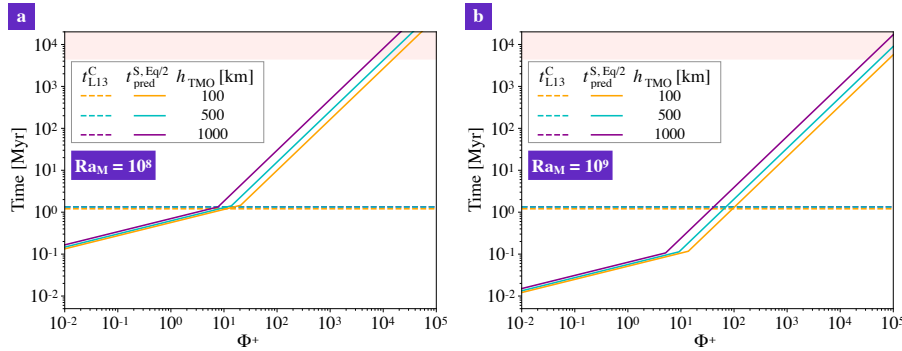


Figure 8. Timescales to reach chemical half-equilibrium between the solid mantle and a TMO of 100, 500 and 1000 km (respectively orange, blue and purple solid lines), (this study, $t_{\text{pred}}^{\text{S, Eq}/2}$), and timescales of crystallisation of that TMO until it is completely mushy (thicknesses with same colours in dashed lines, from Lebrun et al. (2013), $t_{\text{L13}}^{\text{C}}$), versus different values of phase change number, Φ^+ . a) corresponds to a Rayleigh number of the solid part of $\text{Ra}_M = 10^8$ and b) to $\text{Ra}_M = 10^9$. Rose background corresponds to a time higher than the age of the Earth.

the TMO) as follows:

$$285 \quad \text{Ra} = \text{Ra}_M \left(\frac{h_S}{h_M} \right)^3. \quad (16)$$

This re-scaling neglects the change of various physical parameters (from Eq. (6)), but is sufficient for our discussion.

The comparison between timescales is presented in Fig. 8. The timescale to crystallise the TMO is loosely dependent on its thickness, and this time is around 1 Myr. Our models predict that there are significant chemical exchanges between the TMO and the solid mantle for $\Phi^+ < 10$ and < 100 , for $\text{Ra}_M = 10^8$ and $\text{Ra}_M = 10^9$, respectively. Therefore, for Φ^+ smaller than these
 290 values, the TMO is expected to have reached (at least) chemical half-equilibrium with much of the mantle before reaching the mush stage. Therefore, a very strong enrichment of the final-stage TMO as predicted by fractional crystallisation models (Elkins-Tanton et al., 2003) is not expected to occur for small-to-moderate Φ^+ .

4 Discussion

Our models address the compositional evolution of the solid mantle bounded by magma oceans above and/or below, and con-
 295 strain the time needed to chemically (half-)equilibrate these reservoirs. While the concept of a TMO that potentially interacts with the underlying solid mantle is now well accepted, the idea of a long-lived BMO remains controversial. Whether or not a BMO can be stabilised depends on the slope of the adiabat vs. that of the melting curve (Labrosse et al., 2007), and/or on the fate of FeO-rich TMO cumulates that sink to the CMB (Labrosse et al., 2015; Ballmer et al., 2017b). Regardless of these issues, our study can be applied to various scenarios, including those with a solid mantle bounded just by a TMO, and bounded
 300 by a TMO and BMO.



Classical fractional crystallisation models predict strongly inverse chemical stratification of the initial solid mantle, and consequently a global-scale overturn by the end of a TMO crystallisation (e.g., Elkins-Tanton et al., 2003, 2005). Whether or not chemical equilibration occurs between the solid mantle and magma ocean(s) before magma-ocean solidification is highly relevant for extent of this initial chemical stratification, and the propensity of density-driven overturn. Our models show that the composition of the solid mantle and magma oceans depends strongly on the phase change number, Φ . In this study we take Φ as being constant through time, but because this number depends on the dynamics and thicknesses of the magma oceans, Φ may change continuously in a more realistic model with moving boundaries. Low values of Φ require that (re)-melting of solid cumulates and fractional crystallisation of the magma ocean are efficient at either or both solid-liquid phase boundaries.

Considering that Φ^{\pm} values are low when TMO and BMO (or just TMO) crystallisation starts, mantle convection would first assume a degree-1 pattern (Fig. 5), possibly with implications for the origin of crustal dichotomy on the Moon (e.g., Ishihara et al., 2009) and Mars (e.g., Roberts and Zhong, 2006; Citron et al., 2018). The crystallisation fronts move at different speeds, since the TMO can crystallise in a few Myr years (Lebrun et al., 2013), whereas the BMO may persist for much longer (e.g., Labrosse et al., 2007, 2015). Therefore, Φ^{\pm} would change accordingly. The efficiency of equilibration during the late-stage magma ocean depends on the timescale of freezing of this final stage, as well as on the efficiency of mass transfer (Φ^{+}) for a thin and partially mushy TMO.

Once the TMO is fully crystallised, Φ^{+} tends to infinity, while Φ^{-} assumes a finite value as long as the BMO is still present. Dynamics in the solid mantle would change accordingly: convection in the solid mantle may be either dominated by degree-1 (low Φ^{-}) or by higher degrees of convection (high Φ^{-}) (Fig. 5). Although our models do not account for core cooling explicitly, the heat transfer across the mantle is expected to be much more efficient for lower values of Φ^{-} than for high values. This implies that the BMO is likely to crystallise much faster than suggested by Labrosse et al. (2007, 2015) for low Φ^{-} , at least as long as no dense FeO-enriched materials accumulate at the bottom of the solid mantle to prevent efficient mass transfer across the BMO-mantle boundary. The BMO may even be thermally coupled to the relatively fast-cooling TMO for low Φ^{+} and low Φ^{-} .

On the other hand, it is conceivable that a thermally-coupled TMO and BMO crystallise more slowly than expected for a thermally-isolated TMO (Agrusta et al., 2019). The presence of a BMO makes heat transfer across the mantle and out of the thermally coupled BMO and core more efficient than for cases without a BMO and with a boundary layer at the CMB instead. Such a situation implies that there is a larger heat reservoir available to buffer the temperature of the TMO for a given heat flux through the atmosphere and to space. Note that the mass and heat capacity of the core are similar to that of a 1000 km-thick magma ocean, hence the timescale for full crystallisation could be roughly twice than usually computed (cf. Lebrun et al. (2013)). However, the timescales of TMO, BMO and core cooling would be largely unaffected if the BMO were thermochemically stratified (Laneuville et al., 2018). Whether or not material transfer across the whole mantle, as predicted here for cases with low Φ^{\pm} , can efficiently cool the core has important implications for the long-term thermal evolution of terrestrial planets, and the propensity of an (early) dynamo.

Even though timescales of BMO crystallisation are not well constrained, chemical exchange between the two magma oceans (through the solid mantle) is still likely to occur. Note that the same process (i.e. mantle convection) that takes out heat from



the BMO and core, is responsible for this chemical exchange. As an example for the Earth, if we take a TMO and a BMO of 100 km thickness each, $\Phi^\pm \leq 10$ and a Rayleigh number of 10^8 , we would expect a half-equilibrium between solid mantle, TMO and BMO in less than ~ 460 ky (Fig. 7), i.e. before TMO crystallisation (and even more so, before BMO crystallisation). This chemical exchange, however, does not necessarily imply homogeneity between the TMO and BMO, because the relevant phase diagrams that control fractional crystallisation at the TMO-solid mantle (low pressures) and BMO-solid mantle (high pressures) boundaries are very distinct (e.g., Thomas et al., 2012; Boukaré et al., 2015). For example, while the FeO distribution coefficient, K defined in Eq. (11), is taken as constant in this study, its value is likely to be pressure-dependent (Nomura et al., 2011; Miyazaki and Korenaga, 2019a), potentially causing partitioning of FeO into the BMO. Regardless, any such exchange between the TMO, solid mantle and BMO could be a way to sequester trace elements (including heat-producing elements) into the BMO, particularly if the TMO freezes faster than the BMO.

Once both oceans crystallise and $\Phi^\pm \rightarrow \infty$, convection in the solid mantle likely changes to higher degrees of convection (as already seen with $\Phi = 10^2, 10^3$ in Fig. 4b and Fig. 4c), similar to present-day Earth-mantle dynamics. Our models predict that some regions of the solid mantle can preserve significant primordial heterogeneity for long timescales. The preservation of heterogeneity is likely to be enhanced once composition-dependent rheology (i.e., a difference in intrinsic strength of mantle materials) is considered (Manga, 1996; Ballmer et al., 2017a; Gülcher et al., 2019). Indeed, primordial cumulates formed in the lower mantle may be strongly enriched in MgSiO_3 bridgmanite (Boukaré et al., 2015), and hence intrinsically strong (Yamazaki and Karato, 2001). In the present-day, LLSVPs are perhaps the most prominent and seismically-evident large-scale mantle heterogeneities. That they are only rather mildly Fe-enriched (Deschamps et al., 2012) points to rather efficient equilibration between the magma ocean(s) and much of the solid mantle during crystallisation, such as predicted by a subset of our models. For Earth, the subset of our models with Φ^+ smaller than ~ 100 suggests that chemical (half-)equilibrium between a solid mantle and a TMO can be accomplished in less than ~ 1 Myr, i.e., before the TMO is fully solidified or becomes a mush (Fig. 8). Therefore, the final-stage TMO and subsequent mush may be efficiently equilibrated with most of the solid mantle. In this case, we expect solid compositions that are by far not as enriched in FeO as predicted by fractional crystallisation models, in which strong enrichment only occurs because the final-stage TMO is fully separated from the solid mantle with strong disequilibrium between the two reservoirs.

Similarly, we expect moderate enrichment (in FeO and incompatible trace elements) and roughly basaltic-to-komatiitic (i.e., the melting product of a hot \sim pyrolitic mantle) major-element compositions of the primary crust. As our models do not explicitly address the final and mush stages of the TMO, and consider only a strongly simplified compositional model with only two components, (Fe, Mg)O, more detailed studies with a more complex compositional treatment are needed in order to predict the composition of the early crust.

Smaller planets than Earth are less likely to be chemically equilibrated for a given bulk composition. First, they tend to cool faster, as they contain a smaller total reservoir of heat (and volatiles). Moreover, the Ra number is lower for small planets, such that equilibration should take longer (Fig. 7). On the other hand, Super-Earths are expected to be well equilibrated, particularly as BMOs are likely to be stabilised in their interiors due to high CMB pressures (Stixrude, 2014; Caracas et al., 2019), which has a strong effect on equilibration timescales. Whether or not chemical equilibration during the magma-ocean stage is efficient



has important implications for the composition of the primary crust, the propensity of overturn and related stabilisation of a deep dense layer, as well as the long-term evolution of terrestrial planets.

5 Conclusions

In this work we use a numerical model to investigate the thermo-chemical evolution of the convecting solid mantle bound at top and/or bottom by magma oceans. We parameterise fractional crystallisation and melting processes of dynamic topography at either or both solid mantle boundaries, and determine the timescales to reach chemical half-equilibrium between solid mantle and magma ocean(s).

We show that these fractional crystallisation and dynamic melting processes at either or both boundaries play an important role in the chemical evolution of the solid mantle. Efficient transfer of FeO across the mantle-TMO and/or mantle-BMO boundary can prevent strong enrichment of the last-stage magma ocean, and thereby any strong chemical stratification of the early fully-solid mantle. Moreover, this efficient transfer of FeO renders the timescales of chemical (half-)equilibration between the solid mantle and magma ocean(s) shorter than (or on the order of) 1 Myr for realistic values for the phase change number Φ^+ of smaller than ~ 100 . Since magma ocean crystallisation occurs in few Myr (Abe, 1997; Lebrun et al., 2013), our study suggests that chemical equilibrium between solid and liquid reservoirs can be reached before the end of magma ocean crystallisation. Therefore, a strong chemical stratification of the solid mantle is unlikely to occur, and the first crust is not expected to be extremely enriched in FeO. This prediction fundamentally contrasts with that of classical models of fractional crystallisation of the magma ocean (Elkins-Tanton, 2012).

However, more studies are needed to better constrain chemical-equilibration timescales. This could be achieved, for instance, as more realistic compositional models and phase diagrams are accounted for and/or a moving boundary approach is applied to explicitly model the evolution of either or both crystallisation fronts.

Appendix A: Regression Method

The best fitting coefficients of all regressions are obtained using a simple algorithm. Each free parameter has an initial possible minimum and maximum. During the search, each parameter is scanned between minimum and maximum boundary using homogeneous steps. The set of best fitting parameters are found by selecting the lowest misfit between the analytical formulation and the data. The misfit is computed using the least square method in logarithmic scale on all data points.

When the best fitting coefficients are found after a first search, new iterations of the algorithm are requested using more refined windows in the parameter space located around the previous best fitting parameters. When a best parameter is found at the boundary of the parameter space, the parameter space is widened such that the best fitting coefficients are independent from the initial boundaries in parameter space. Iterations of the search are performed until the solution is converged below fourth digit precision.

Figure A1 shows the regression for all cases that reached chemical half-equilibrium.

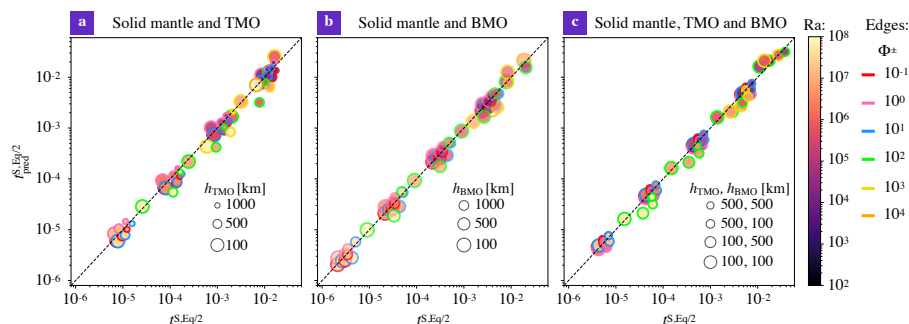


Figure A1. Regression for all data with Eq. (15), for the solid mantle bound by a) a TMO of 1000, 500 and 100 km ($V_S = 4.7 \times 10^{20}$, 6.7×10^{20} and $8.6 \times 10^{20} \text{ m}^3$, respectively), b) a BMO of 1000, 500 and 100 km ($V_S = 7.1 \times 10^{20}$, 8.2×10^{20} and $8.9 \times 10^{20} \text{ m}^3$, respectively), c) and a TMO and BMO of 500 - 500 km, 500 - 100 km, 100 - 500 km, and 100 - 100 km ($V_S = 5.8 \times 10^{20}$, 6.6×10^{20} , 7.7×10^{20} , and $8.4 \times 10^{20} \text{ m}^3$, respectively). Colours indicate the corresponding Rayleigh number, Ra , and colour edges represent the phase change number, Φ .

Author contributions. D. P. Bolrão, M. D. Ballmer, A. Morison, A. B. Rozel, S. Labrosse and P. J. Tackley designed the study. D. P. Bolrão, A. Morison, A. B. Rozel, P. Sanan, S. Labrosse and P. J. Tackley developed the code. M. D. Ballmer, A. Morison, A. B. Rozel and S. Labrosse supported D. P. Bolrão in investigating the results. A. B. Rozel fitted the data and obtained the empirical scaling law. D. P. Bolrão made the figures and wrote the paper draft. All co-authors provided input and suggestions for the paper draft.

Competing interests. The authors declare that they have no conflict of interest.

Acknowledgements. We thank Antonio Manjón-Cabeza Córdoba for the useful comments on the first version of this manuscript. We gratefully acknowledge support from the SNSF grant 200021E-164337 and ANR-15-CE31-0018-01.



References

- 410 Abe, Y.: Physical state of the very early Earth, *Lithos*, 30, 223 – 235, [https://doi.org/doi.org/10.1016/0024-4937\(93\)90037-D](https://doi.org/doi.org/10.1016/0024-4937(93)90037-D), 1993.
- Abe, Y.: Thermal and chemical evolution of the terrestrial magma ocean, *Physics of the Earth and Planetary Interiors*, 100, 27 – 39, [https://doi.org/10.1016/S0031-9201\(96\)03229-3](https://doi.org/10.1016/S0031-9201(96)03229-3), physical and Chemical Evolution of the Earth, 1997.
- Abe, Y. and Matsui, T.: Early evolution of the Earth: Accretion, atmosphere formation, and thermal history, *Journal of Geophysical Research: Solid Earth*, 91, E291–E302, <https://doi.org/10.1029/JB091iB13p0E291>, 1986.
- 415 Abe, Y. and Matsui, T.: Evolution of an Impact-Generated H₂O-CO₂ Atmosphere and Formation of a Hot Proto-Ocean on Earth, *Journal of the Atmospheric Sciences*, 45, 3081–3101, [https://doi.org/10.1175/1520-0469\(1988\)045<3081:EOAIGH>2.0.CO;2](https://doi.org/10.1175/1520-0469(1988)045<3081:EOAIGH>2.0.CO;2), 1988.
- Agrusta, R., Morison, A., Labrosse, S., Deguen, R., Alboussière, T., Tackley, P. J., and Dubuffet, F.: Mantle convection interacting with magma oceans, *Geophys. J. Int.*, 220, 1878–1892, <https://doi.org/10.1093/gji/ggz549>, 2019.
- Andraut, D., Petitgirard, S., Nigro, G. L., Devidal, J.-L., Veronesi, G., Garbarino, G., and Mezouar, M.: Solid-liquid iron partitioning in
420 Earth's deep mantle, *Nature*, 487, 354–357, 2012.
- Ballmer, M. D., Schumacher, L., Lekic, V., Thomas, C., and Ito, G.: Compositional layering within the large low shear-wave velocity provinces in the lower mantle, *Geochemistry, Geophysics, Geosystems*, 17, 5056–5077, <https://doi.org/10.1002/2016GC006605>, 2016.
- Ballmer, M. D., Houser, C., Hernlund, J., Wentzcovich, R., and Hirose, K.: Persistence of strong silica-enriched domains in the Earth's lower mantle, *Nature Geoscience*, 10, 236–240, <https://doi.org/10.1038/ngeo2898>, 2017a.
- 425 Ballmer, M. D., Lourenço, D. L., Hirose, K., Caracas, R., and Nomura, R.: Reconciling magma-ocean crystallization models with the present-day structure of the Earth's mantle, *Geochemistry, Geophysics, Geosystems*, 18, 2785–2806, <https://doi.org/10.1002/2017GC006917>, 2017b.
- Boukaré, C.-E., Ricard, Y., and Fiquet, G.: Thermodynamics of the MgO-FeO-SiO₂ system up to 140 GPa: Application to the crystallization of Earth's magma ocean, *Journal of Geophysical Research: Solid Earth*, 120, 6085–6101, 2015.
- 430 Boukaré, C.-E., Parmentier, E., and Parman, S.: Timing of mantle overturn during magma ocean solidification, *Earth and Planetary Science Letters*, 491, 216 – 225, <https://doi.org/10.1016/j.epsl.2018.03.037>, 2018.
- Brown, S., Elkins-Tanton, L., and Walker, R.: Effects of magma ocean crystallization and overturn on the development of ¹⁴²Nd and ¹⁸²W isotopic heterogeneities in the primordial mantle, *Earth and Planetary Science Letters*, 408, 319–330, <https://doi.org/10.1016/j.epsl.2014.10.025>, 2014.
- 435 Canup, R. M.: Forming a Moon with an Earth-like Composition via a Giant Impact, *Science*, 338, 1052–1055, <https://doi.org/10.1126/science.1226073>, 2012.
- Caracas, R., Hirose, K., Nomura, R., and Ballmer, M. D.: Melt–crystal density crossover in a deep magma ocean, *Earth Planet. Sci. Lett.*, 516, 202 – 211, <https://doi.org/10.1016/j.epsl.2019.03.031>, 2019.
- Chandrasekhar, S.: *Hydrodynamic and Hydromagnetic Stability*, Dover Books on Physics Series, Dover Publications, 1961.
- 440 Citron, R. I., Manga, M., and Tan, E.: A hybrid origin of the Martian crustal dichotomy: Degree-1 convection antipodal to a giant impact, *Earth and Planetary Science Letters*, 491, 58 – 66, <https://doi.org/https://doi.org/10.1016/j.epsl.2018.03.031>, <http://www.sciencedirect.com/science/article/pii/S0012821X18301559>, 2018.
- Corgne, A. and Wood, B.: Trace element partitioning and substitution mechanisms in calcium perovskites, *Contributions to Mineralogy and Petrology*, 149, 85–97, <https://doi.org/10.1007/s00410-004-0638-3>, 2005.



- 445 Čuk, M. and Stewart, S. T.: Making the Moon from a Fast-Spinning Earth: A Giant Impact Followed by Resonant Despinning, *Science*, 338, 1047–1052, <https://doi.org/10.1126/science.1225542>, 2012.
- Deguen, R.: Thermal convection in a spherical shell with melting/freezing at either or both of its boundaries, *Journal of Earth Science*, 24, 669–682, <https://doi.org/10.1007/s12583-013-0364-8>, 2013.
- Deguen, R., Alboussière, T., and Cardin, P.: Thermal convection in Earth’s inner core with phase change at its boundary, *Geophysical Journal International*, 194, 1310–1334, <https://doi.org/10.1093/gji/ggt202>, 2013.
- 450 Deschamps, F., Cobden, L., and Tackley, P. J.: The primitive nature of large low shear-wave velocity provinces, *Earth and Planetary Science Letters*, 349–350, 198 – 208, <https://doi.org/10.1016/j.epsl.2012.07.012>, 2012.
- Drake, M. J.: Accretion and primary differentiation of the Earth: a personal journey, *Geochimica et Cosmochimica Acta*, 64, 2363 – 2369, [https://doi.org/10.1016/S0016-7037\(00\)00372-0](https://doi.org/10.1016/S0016-7037(00)00372-0), 2000.
- 455 Elkins-Tanton, L. T.: Magma Oceans in the Inner Solar System, *Annual Review of Earth and Planetary Sciences*, 40, 113–139, <https://doi.org/10.1146/annurev-earth-042711-105503>, 2012.
- Elkins-Tanton, L. T., Parmentier, E. M., and Hess, P. C.: Magma ocean fractional crystallization and cumulate overturn in terrestrial planets: Implications for Mars, *Meteoritics & Planetary Science*, 38, 1753–1771, <https://doi.org/10.1111/j.1945-5100.2003.tb00013.x>, 2003.
- Elkins-Tanton, L. T., Zaranek, S., Parmentier, E., and Hess, P.: Early magnetic field and magmatic activity on Mars from magma ocean cumulate overturn, *Earth and Planetary Science Letters*, 236, 1 – 12, <https://doi.org/10.1016/j.epsl.2005.04.044>, 2005.
- 460 Flasar, F. M. and Birch, F.: Energetics of core formation: A correction, *Journal of Geophysical Research*, 78, 6101–6103, <https://doi.org/10.1029/JB078i026p06101>, 1973.
- Garnero, E. J. and McNamara, A. K.: Structure and Dynamics of Earth’s Lower Mantle, *Science*, 320, 626–628, <https://doi.org/10.1126/science.1148028>, 2008.
- 465 Gülcher, A., Ballmer, M., and Tackley, P.: Investigating the effect of rheological and tectonic parameters on the preservation of primordial reservoirs in Earth’s lower mantle: a numerical study., in: *Geophysical Research Abstracts*, vol. 21, 2019.
- Hamano, K., Abe, Y., and Genda, H.: Emergence of two types of terrestrial planet on solidification of magma ocean, *Nature*, 497, 607–610, <https://doi.org/10.1038/nature12163>, 2013.
- Hernlund, J. W. and Tackley, P. J.: Modeling mantle convection in the spherical annulus, *Physics of the Earth and Planetary Interiors*, 171, 48 – 54, <https://doi.org/10.1016/j.pepi.2008.07.037>, recent *Advances in Computational Geodynamics: Theory, Numerics and Applications*, 2008.
- Ishihara, Y., Goossens, S., Matsumoto, K., Noda, H., Araki, H., Namiki, N., Hanada, H., Iwata, T., Tazawa, S., and Sasaki, S.: Crustal thickness of the Moon: Implications for farside basin structures, *Geophysical Research Letters*, 36, <https://doi.org/10.1029/2009GL039708>, <https://agupubs.onlinelibrary.wiley.com/doi/abs/10.1029/2009GL039708>, 2009.
- 475 Labrosse, S., Hernlund, J. W., and Coltice, N.: A crystallizing dense magma ocean at the base of the Earth’s mantle, *Nature*, 450, 866–869, <https://doi.org/10.1038/nature06355>, 2007.
- Labrosse, S., Hernlund, J. W., and Hirose, K.: Fractional Melting and Freezing in the Deep Mantle and Implications for the Formation of a Basal Magma Ocean, pp. 123–142, John Wiley and Sons, Inc, <https://doi.org/10.1002/9781118860359.ch7>, 2015.
- Labrosse, S., Morison, A., Deguen, R., and Alboussière, T.: Rayleigh–Bénard convection in a creeping solid with a phase change at either or 480 both horizontal boundaries, *J. Fluid Mech.*, 846, 5–36, <https://doi.org/10.1017/jfm.2018.258>, 2018.
- Laneuville, M., Hernlund, J., Labrosse, S., and Guttenberg, N.: Crystallization of a compositionally stratified basal magma ocean, *Physics of the Earth and Planetary Interiors*, 276, 86–92, 2018.



- Lebrun, T., Massol, H., Chassefière, E., Davaille, A., Marcq, E., Sarda, P., Leblanc, F., and Brandeis, G.: Thermal evolution of an early magma ocean in interaction with the atmosphere, *Journal of Geophysical Research: Planets*, 118, 1155–1176, <https://doi.org/10.1002/jgre.20068>, 2013.
- Liebske, C., Corgne, A., Frost, D. J., Rubie, D. C., and Wood, B. J.: Compositional effects on element partitioning between Mg-silicate perovskite and silicate melts, *Contributions to Mineralogy and Petrology*, 149, 113–128, <https://doi.org/10.1007/s00410-004-0641-8>, 2005.
- Manga, M.: Mixing of heterogeneities in the mantle: effect of viscosity differences, *Geophysical Research Letters*, 23, 403–406, 1996.
- Masters, G., Laske, G., Bolton, H., and Dziewonski, A.: The relative behavior of shear velocity, bulk sound speed, and compressional velocity in the mantle: Implications for chemical and thermal structure, *Washington DC American Geophysical Union Geophysical Monograph Series*, 117, 63–87, <https://doi.org/10.1029/GM117p0063>, 2000.
- Maurice, M., Tosi, N., Samuel, H., Plesa, A., Hüttig, C., and Breuer, D.: Onset of solid-state mantle convection and mixing during magma ocean solidification, *Journal of Geophysical Research: Planets*, 122, 577–598, <https://doi.org/10.1002/2016JE005250>, 2017.
- McDonough, W. and Sun, S.-s.: The composition of the Earth, *Chemical Geology*, 120, 223–253, [https://doi.org/10.1016/0009-2541\(94\)00140-4](https://doi.org/10.1016/0009-2541(94)00140-4), 1995.
- Miyazaki, Y. and Korenaga, J.: On the Timescale of Magma Ocean Solidification and Its Chemical Consequences: 1. Thermodynamic Database for Liquid at High Pressures, *Journal of Geophysical Research: Solid Earth*, 124, 3382–3398, <https://doi.org/10.1029/2018JB016932>, <https://agupubs.onlinelibrary.wiley.com/doi/abs/10.1029/2018JB016932>, 2019a.
- Miyazaki, Y. and Korenaga, J.: On the Timescale of Magma Ocean Solidification and Its Chemical Consequences: 2. Compositional Differentiation Under Crystal Accumulation and Matrix Compaction, *Journal of Geophysical Research: Solid Earth*, 124, 3399–3419, <https://doi.org/10.1029/2018JB016928>, <https://agupubs.onlinelibrary.wiley.com/doi/abs/10.1029/2018JB016928>, 2019b.
- Morison, A.: Convection in the primitive mantle in interaction with global magma oceans, Ph.D. thesis, 2019.
- Morison, A., Labrosse, S., Deguen, R., and Alboussière, T.: Timescale of overturn in a magma ocean cumulate, *Earth and Planetary Science Letters*, 516, 25–36, <https://doi.org/10.1016/j.epsl.2019.03.037>, 2019.
- Murakami, M. and Bass, J.: Evidence of denser MgSiO₃ glass above 133 gigapascal (GPa) and implications for remnants of ultradense silicate melt from a deep magma ocean, *Proceedings of the National Academy of Sciences of the United States of America*, 108, 17 286–17 289, <https://doi.org/10.1073/pnas.1109748108>, 2011.
- Nguyen, C., Fleck, J., Rains, C., Weeraratne, D., Nguyen, C., Brand, D., Klein, S., McGehee, J., Rincon, J., Martinez, C., and Olson, P.: Iron diapirs entrain silicates to the core and initiate thermochemical plumes, *Nature Communications*, 9, <https://doi.org/10.1038/s41467-017-02503-2>, 2018.
- Ni, S. and Helmberger, D.: Probing an Ultra-low velocity zone at the Core Mantle Boundary with P and S Waves, *Geophysical Research Letters*, 28, <https://doi.org/10.1029/2000GL012766>, 2001.
- Nomura, R., Ozawa, H., Tateno, S., Hirose, K., Hernlund, J., Muto, S., Ishii, H., and Hiraoka, N.: Spin crossover and iron-rich silicate melt in the Earth's deep mantle, *Nature*, 473, 199–202, <https://doi.org/10.1038/nature09940>, 2011.
- Ricard, Y., Labrosse, S., and Dubuffet, F.: Lifting the cover of the cauldron: Convection in hot planets, *Geochem. Geophys. Geosyst.*, 15, 4617–4630, <https://doi.org/10.1002/2014GC005556>, 2014.
- Roberts, J. H. and Zhong, S.: Degree-1 convection in the Martian mantle and the origin of the hemispheric dichotomy, *Journal of Geophysical Research: Planets*, 111, <https://doi.org/10.1029/2005JE002668>, <https://agupubs.onlinelibrary.wiley.com/doi/abs/10.1029/2005JE002668>, 2006.



- 520 Sears, W. D.: Tidal Dissipation and the Giant Impact Origin for the Moon, in: Lunar and Planetary Science Conference, vol. 23 of *Lunar and Planetary Inst. Technical Report*, 1992.
- Solomatov, V.: 9.04 - Magma Oceans and Primordial Mantle Differentiation, in: *Treatise on Geophysics (Second Edition)*, edited by Schubert, G., pp. 81 – 104, Elsevier, Oxford, second edition edn., <https://doi.org/10.1016/B978-0-444-53802-4.00155-X>, 2015.
- Solomatov, V. S.: Fluid Dynamics of a Terrestrial Magma Ocean, pp. 323–338, 2000.
- 525 Solomatov, V. S. and Stevenson, D. J.: Nonfractional Crystallization of a Terrestrial Magma Ocean, *Journal of Geophysical Research E*, 98, 5391–5406, <https://doi.org/10.1029/92JE02579>, 1993a.
- Solomatov, V. S. and Stevenson, D. J.: Kinetics of crystal growth in a terrestrial magma ocean, *Journal of Geophysical Research: Planets*, 98, 5407–5418, <https://doi.org/10.1029/92JE02839>, 1993b.
- Sonett, C. P., Colburn, D. S., and Schwartz, K.: Electrical Heating of Meteorite Parent Bodies and Planets by Dynamo Induction from a
530 Pre-main Sequence T Tauri “Solar Wind”, *Nature*, 219, 924–926, <https://doi.org/10.1038/219924a0>, 1968.
- Stixrude, L.: Melting in super-earths, *Phil. Trans. R. Soc. A*, 372, 20130076, <https://doi.org/10.1098/rsta.2013.0076>, <http://dx.doi.org/10.1098/rsta.2013.0076>, 2014.
- Stixrude, L., de Koker, N., Sun, N., Mookherjee, M., and Karki, B. B.: Thermodynamics of silicate liquids in the deep Earth, *Earth and Planetary Science Letters*, 278, 226 – 232, <https://doi.org/10.1016/j.epsl.2008.12.006>, 2009.
- Tackley, P. J.: Modelling compressible mantle convection with large viscosity contrasts in a three-dimensional spherical shell using the
535 yin-yang grid, *Physics of the Earth and Planetary Interiors*, 171, 7–18, <https://doi.org/10.1016/j.pepi.2008.08.005>, 2008.
- Tateno, S., Hirose, K., and Ohishi, Y.: Melting experiments on peridotite to lowermost mantle conditions, *Journal of Geophysical Research: Solid Earth*, 119, 4684–4694, <https://doi.org/10.1002/2013JB010616>, 2014.
- Taylor, S. and McLennan, S.: *The continental crust: Its composition and evolution*, Blackwell. Oxford., p. 312, 1985.
- Thomas, C. W., Liu, Q., Agee, C. B., Asimow, P. D., and Lange, R. A.: Multi-technique equation of state for Fe₂SiO₄melt and the density of
540 Fe-bearing silicate melts from 0 to 161 GPa, *Journal of Geophysical Research: Solid Earth*, 117, <https://doi.org/10.1029/2012JB009403>, <https://agupubs.onlinelibrary.wiley.com/doi/abs/10.1029/2012JB009403>, 2012.
- Tonks, W. B. and Melosh, H. J.: Magma ocean formation due to giant impacts, *Journal of Geophysical Research: Planets*, 98, 5319–5333, <https://doi.org/10.1029/92JE02726>, 1993.
- Urey, H. C.: The Cosmic Abundances of Potassium, Uranium, and Thorium and the Heat Balances of the Earth, the Moon, and Mars, *Proceedings of the National Academy of Sciences of the United States of America*, 42, 889–891, 1956.
- 545 Yamazaki, D. and Karato, S.-i.: Some mineral physics constraints on the rheology and geothermal structure of Earth’s lower mantle, *American Mineralogist*, 86, 385–391, 2001.