

# **Interactive comment on “Seismic gaps and intraplate seismicity around Rodrigues Ridge (Indian Ocean) from time-domain array analysis” by Manvendra Singh and Georg Rumpker**

## **RESPONSE TO THE INTERACTIVE COMMENT OF REFEREE #1**

We would like to thank the reviewer for the time spent on the review and for the helpful comments and constructive suggestions. The comments of the referee are in bold and the replies from Authors are provided in italics to facilitate the reading.

### General comments

**Referee 1: The manuscript presents a thorough array-based analysis of seismicity surrounding Rodrigues Island in the Indian Ocean. Due to its remote location and proximity to the Rodrigues Triple junction, this data set offers interesting insights into intra-plate seismicity of an oceanic plate. The authors exploit the array geometry to estimate locations of 63 events that were not detected by global networks. They suggest a simple, but adequate way of estimating epicentral distance and use backazimuths derived from array analysis. The method is very clearly documented and well-illustrated. The results suggest some well-defined clusters of intra-plate seismicity, that are clearly located away from any of the surrounding ridges. In addition, the authors discuss gaps in the seismicity distribution along the Central Indian Ridge, that are not closed by their additional data. While all results are clearly described, the interpretation is somewhat short and could easily be enhanced by some more information.**

Authors response: *We are thankful for the appreciation of our work and for pointing out the shortcomings. Based on the specific comments provided below we have enhanced the discussion section of our manuscript.*

Authors changes: *The discussion section has been modified, based on the comments from line numbers 257 to 265 and from lines 279 to 283 as shown below.*

Line 257: *“Various mechanisms providing explanation to the cause of intraplate seismicity have been proposed previously. De Long et al. (1977) suggested that different lithospheric ages across the fracture zones, as also observed in the Rodrigues–CIR region, are related to differential subsidence causing stresses and hence earthquakes. Similarly, Collette (1974) and Turcotte (1974) suggested thermal contraction due to different ages of the oceanic crust (Müller et al., 2008) as another*

possible mechanism. This may be substantiated by the seismicity observed in clusters 2 and 3 as they occur along possible prolongations of fracture zones.

Line 279: *Based on hydroacoustic data, similar seismic gaps were also observed along the intermediate-spreading Southeast Indian Ridge (Tsang-Hin-Sun et al., 2016) and the slow-spreading Mid-Atlantic Ridge (Escartin et al., 2008; Simao et al. 2010), where events were focused on ridge-segments ends. This uneven distribution of seismicity along CIR, thus, suggests segment-scale variation in lithosphere structure, also observed in Southeast Indian Ridge (Tsang-Hin-Sun et al., 2016) and Mid-Atlantic Ridge (Goslin et al., 2012)."*

### Specific comments

**Referee 1:** **To expand the discussion of the seismicity, the authors could, for example, include in their interpretative Fig. 11 the age of the oceanic lithosphere to discuss whether age differences and hence differing thermal contraction could be responsible for the intraplate seismicity. Clusters 2 and 3 seem to be located in prolongation of transform zones, so this could support this interpretation.**

Authors response: *We agree that thermal contraction could play a role in the occurrence of these clusters. This was only partially addressed in the discussion (lines 225 and 226) and has now been discussed in more detail in the revised version of the manuscript.*

Authors changes: *Pease refer to the below text. Thermal contraction has been discussed between lines 259 and 262 and has been modified to:*

*"Similarly, Collette (1974) and Turcotte (1974) suggested thermal contraction due to different ages of the oceanic crust (Müller et al., 2008) as another possible mechanism. This may be substantiated by the seismicity observed in clusters 2 and 3 as they occur along possible prolongations of fracture zones."*

**Referee 1:** **Fig. 11 could include a colour or symbol coding to distinguish between earthquakes in the global catalogue that were detected and those that were not detected.**

Authors response: *The required information was provided in Fig. 8. Yellow and orange symbols are used to discriminate between events from the global catalogue that were detected (and located) by the array and those that were not. Fig. 11 already contains much information related to the interpretation of the results. To keep the maps readable, repeated information were avoided in Fig. 11. However, we have combined the information provided in Figs. 8 and 9 in the revised version into new Fig. 9. The old Fig. 8 has been provided in supporting information as Fig. S3. (We also provide a new Fig. 8, as described in response to reviewer 2.)*

Authors changes: *Please see new Fig. 9 in the revised manuscript and new Fig. S3 in supporting information.*

**Referee 1:** **A seismic stripe-and-gap pattern in teleseismic and hydroacoustic data have for example been discussed in more detail by Escartin et al. (2008) and by Simao et al. (2010). They see a relative**

lack of earthquakes near magmatic centres of spreading segments, whereas segment ends at the Mid-Atlantic Ridge tend to show increased seismicity rates. This observation could provide support for the interpretation of gap 2. A regional seismicity analysis with data just south of the survey area (25 S) is presented by Tsang-Hin-Sun et al. (2016). These authors also find seismic gaps that are even somewhat clearer delineated since they use a hydroacoustic data set with lower detection thresholds. This study could therefore provide additional evidence for the existence of the seismic gaps in the present study area.

Authors response: *We appreciate pointing out the shortcomings of our discussion. The above mentioned references provide important additional information and support for our study and have been included as part of our discussion in the revised manuscript.*

Authors changes: *References discussed in the text and added in the list*

*Escartín, J., Smith, D. K., Cann, J., Schouten, H., Langmuir, C. H., and Escrig, S.: Central role of detachment faults in accretion of slow-spreading oceanic lithosphere, Nature, 455(7214), 790–794, 2008.*

*Goslin, J., Perrot, J., Royer, J. Y., Martin, C., Lourenço, N., Luis, J., Dziak, R. P., Matsumoto, H., Haxel, J., Fowler, M. J., and Fox, C. G.: Spatiotemporal distribution of the seismicity along the Mid-Atlantic Ridge north of the Azores from hydroacoustic data: Insights into seismogenic processes in a ridge–hot spot context, Geochem. Geophys. Geosyst., 13(2), 2012.*

*Müller, R. D., Sdrolias, M., Gaina, C., and Roest, W. R.: Age, spreading rates, and spreading asymmetry of the world's ocean crust, Geochem., Geophys., Geosyst., 9(4), 2008.*

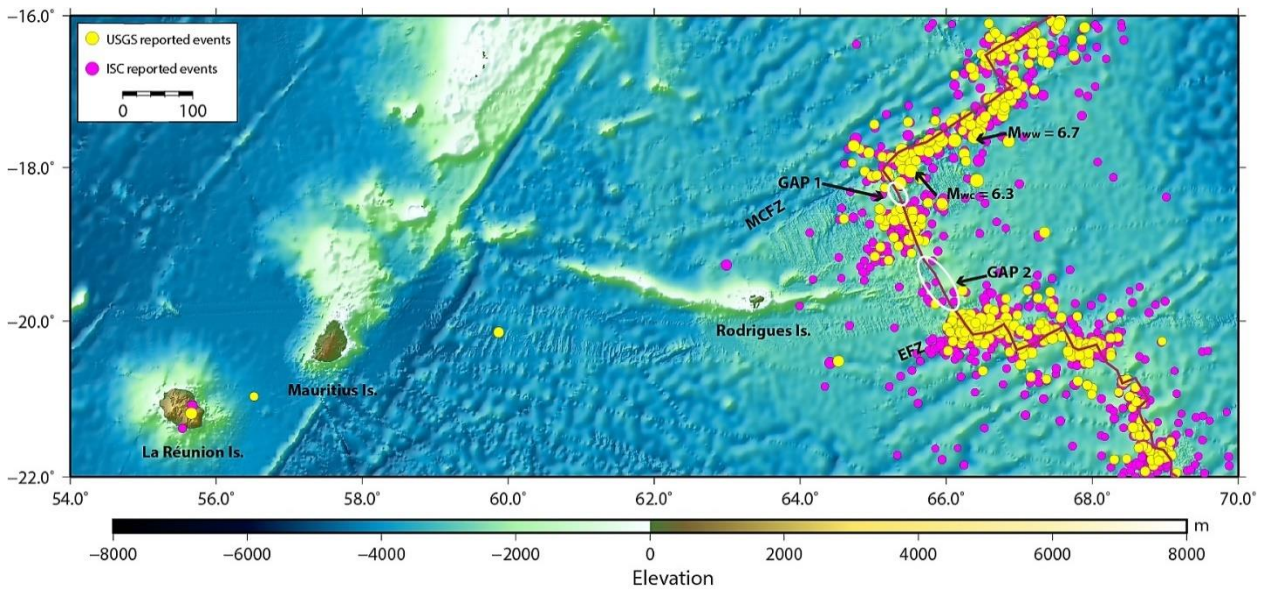
*Simao, N., Escartin, J., Goslin, J., Haxel, J., Cannat, M., and Dziak, R.: Regional seismicity of the Mid-Atlantic Ridge: observations from autonomous hydrophone arrays, Geophys. J. Int., 183(3), 1559–1578, 2010.*

*Tsang-Hin-Sun, E., Royer, J. Y., and Perrot, J.: Seismicity and active accretion processes at the ultraslow-spreading Southwest and intermediate-spreading Southeast Indian ridges from hydroacoustic data, Geophys. J. Internat., 206(2), 1232–1245, 2016.*

*Leva, C., Rimpker, G., Link, F. and Wölbern, I.: Mantle earthquakes beneath Fogo volcano, Cape Verde: Evidence for subcrustal fracturing induced by magmatic injection. J. Volcanol. Geotherm. Res., 386, 106672, 2019.*

**Referee 1: Fig. 11 uses 18 years of data from the USGS catalogue. The reviewed ISC bulletin shows many more events in this area for the period 1970-2017.**

Authors response: *The additional data from ISC bulletin (magenta symbols in the Figure below) have not been included in our study because the location accuracy for the ISC events is significantly lower than for the events in the USGS catalogue (as judged from the spread of the events shown in the Figure below). This is the reason for focusing on the events provided by the USGS catalogue.*



Authors changes: *None.*

**Referee 1:** It would be interesting to see whether the seismicity of cluster 4 is swarm-like and occurs in a short time period.

Authors response: *The seismicity of cluster 4 is not swarm-like; the events occur intermittently over a period of 13 months.*

Authors changes: *The details of cluster 4 have been added to Table S2 of the supporting information.*

## RESPONSE TO THE INTERACTIVE COMMENT OF REFEREE #2

*We would like to thank the reviewer for the time spent on the review and for the helpful comments and constructive suggestions. The comments of the referee are in bold and the reply from Authors are provided in italics to facilitate the reading.*

### General comments

**Referee 2: The authors use a temporary array on Rodrigues Island to detect and locate (mostly) intraplate earthquakes west of the Central Indian Ridge. This is an entirely new study, which makes the most out of a small array of seismic stations. The analysis is sound; the approach of using beam forming to estimate azimuth and S-P times to estimate distance is sensible.**

Authors response: *We are thankful for the appreciation of our work.*

### Specific comments

**Referee 2: It is not clear that these locations provide much new information about seismic gap 2, given the absence of detection of events from the adjacent Egeria FZ. The lack of small events could be attributed instead to poor propagation of Pn and Sn along the path to the array. There is no need for the direct effects of melt on attenuation along the paths; the attenuation is more likely attributable to the presence of thin lithosphere associated with the flow of hotter mantle to the spreading center from the hotspot.**

Authors response: *We do not really see this comment in opposition to our conclusions. However, as it is assumed that Pn propagates in the uppermost section of the mantle, a thinned lithosphere, alone, may not have such a significant effect (i.e. attenuation) on the propagation. We, therefore, concluded that partial melting also plays a role. We further agree that this is caused by hotter mantle material between the hotspot and the spreading center.*

Authors changes: *None.*

**Referee 2: Lines 176-179 appear to be out of place, since they refer to “the event”, which is not introduced until lines 186-187.**

Authors response: *We thank the referee for pointing out this shortcoming.*

Authors changes: *The paragraph has been shifted to line 216.*

**Referee 2: Also lines 186-191 suggest that array analysis of this example event is shown in figure 7, but that aspect of the event is not illustrated.**

Authors response: *We thank the referee for pointing out this shortcoming.*

Authors changes: *A new Fig. 8 has been provided in the revised version to show the analysis of the event described and subsequently the figures have been renumbered in the text as well as the list.*

**Referee 2: Since Figure 9 largely duplicates information shown in Figures 8 and 11, this figure could be used to show regions of uncertainty around each of the locations calculated from uncertainty in azimuth and scatter in S-P picks.**

Authors response: *We tried to do this, however, plotting of uncertainties in locations will make the figure unreadable as most of the events occur in clusters. To overcome this, all uncertainties are provided in Table S1 of the supporting information.*

Authors changes: *We have combined the information provided in Figs. 8 and 9 in the revised version into new Fig. 9. The old Fig. 8 has been provided in supporting information as Fig. S3.*

**Referee 2: P picks appear to be pretty clear, but S picks somewhat subjective. Are S picks on each seismogram made independently, or is there iteration between different picks for each event?**

Authors response: *All S picks were made independently and are based on visual inspection of horizontal components as well as vertical where necessary.*

Authors changes: *New text in line 138-139 has been added “All S picks were made independently and are based on visual inspection of horizontal components as well as vertical where necessary.”*

**Referee 2: Cluster 4 is not shown in Figure 10, although it is mentioned in the caption.**

Authors response: *We thank the referee for pointing out this shortcoming.*

Authors changes: *The figure caption has been modified to “Variation in longitude (a) and latitude (b) of the events detected and located using Rodrigues array. Monthly distribution of the events is shown in (c). The red solid line in (b) marks the events for Cluster 1 (~120 km north-east of Rodrigues Island), Cluster 2 (~140 km north-west of Rodrigues Island), and Cluster 3 (~265 km south of Rodrigues Island).”*

## ADDITIONAL MODIFICATIONS

Authors response: *In addition to the requests by the reviewers we also modified the magnitude calculations. In the original submitted version of the manuscript, local magnitudes were based on amplitudes obtained at or near the S-wave arrival time. In the revised version we adhere to the more conventional approach and determine the local magnitude from the maximum (absolute) amplitude of the displacement seismogram on the two horizontal components (see paragraph 2.3). This approach leads to slightly larger magnitude values in comparison to those reported in the original submitted manuscript. The differences in magnitudes for selected events (Tables 1 and 2) is also reduced. Remaining discrepancies, however, may be best explained by differences in the radiation directions and/or attenuation effects, as suggested in the discussion.*

Authors changes: *Text between lines 95 and 99 has been modified to 'In order to calculate the magnitude of an event, we account for the sensitivity of the recording system (CUBE datalogger and 1 Hz MARK sensor) and integrate the velocity seismogram, which is then convolved with the Wood–Anderson transfer function to obtain the ground displacement in nanometers. Magnitudes are determined based on the maximum (absolute) amplitude of the horizontal components using all available stations for which the recordings show a clear (dominant) S-phase. Again, the mean and the SD of the magnitude value is calculated. As most of the events are located well within 1000 km radius, we use the relation given by Havskov and Ottemoller (1999) in SEISAN package to determine the local magnitude.'*

Additional explanation has been provided between line 205 and 207 *'Amplitude variations related to the different radiation directions relevant for regional (at Rodrigues island) and teleseismic recordings may also play a role. In addition, the amplitudes for the dominantly horizontal Pn raypaths from the recordings at Rodrigues may be more affected by regional attenuation processes, as described further in the next section.'*

*The magnitude values have been modified in Tables 1, S1 and S2 and the relevant figures are modified accordingly.*

# Seismic gaps and intraplate seismicity around Rodrigues Ridge (Indian Ocean) from time-domain array analysis

Manvendra Singh<sup>1,2</sup> and Georg Rumpker<sup>2</sup>

<sup>1</sup> Mauritius Oceanography Institute, Avenue des Anchois, Morcellement de Chazal, Albion, Mauritius

<sup>2</sup> Institute of Geosciences, Goethe-University Frankfurt, Frankfurt am Main, Germany

Correspondence to: Manvendra Singh ([msingh@moi.intnet.mu](mailto:msingh@moi.intnet.mu))

**Abstract.** Rodrigues Ridge connects the Reunion hotspot track with the Central Indian Ridge (CIR) and has been suggested to represent the surface expression of a sub-lithospheric flow channel. From global earthquake catalogues, the seismicity in the region has been associated mainly with events related to the fracture zones at the CIR. However, some segments of the CIR appear void of seismic events. Here, we report on the seismicity recorded at a temporary array of ten seismic stations operating on Rodrigues Island from September 2014 to June 2016. The array analysis was performed in the time domain – by time shifting and stacking of the complete waveforms. Event distances were estimated based on a 1-D velocity model and the travel-time differences between S- and P-waves arrivals. We detected and located 63 new events, which were not reported by the global networks. Most of the events (51) are located off the CIR and can be classified as intraplate earthquakes. Local magnitudes varied between 1.3–6 and 3.5–7. Four seismic clusters were observed along with a distinguishable swarm of earthquakes that occurred to the west of the spreading segment of the CIR during the period from March to April 2015. The Rodrigues Ridge appeared aseismic during the period of operation. The lack of seismic activity along both Rodrigues Ridge and the sections of the CIR to the east of Rodrigues may be explained by partially-molten upper-mantle material, possibly in relation to the proposed material flow between the Reunion plume and the CIR.

## 1 Introduction

The theory of plate tectonics is largely supported by the occurrence of seismicity along (oceanic) ridge systems, subduction zones and mountain belts. However, a substantial part of seismicity occurs off the ridge axes within the oceanic basins. Such events are usually denoted intraplate earthquakes (Krishna et al., 1998; Okal, 1983). Gutenberg and Richter (1941) made the first attempt to document these intraplate events. A more systematic approach was adopted by Sykes and Sbar (1973) and later by Bergman and Solomon (1980) where they compiled a catalog of 159 oceanic intraplate events between 1939 and 1979. Assessing the seismicity inside the oceanic environment has always been a challenge as most of the permanent stations are located on the islands where the attenuation of the seismic signal along the oceanic path further reduces the detection capability. Another factor contributing to this problem is swell-generated noise in the band of 1–5 s (Okal, 1983).

Rodrigues Island is found at the eastern extremity of the Rodrigues Ridge near 19°42'S and 63°25'E, approximately 650 km east of Mauritius. The east–west trending Rodrigues Ridge was formed between 7 Ma and 10 Ma (Dyment et al., 2007; Saddul et al., 2002). It is suggested that it represents the surface expression of the interaction of the Reunion Hotspot with the Central Indian Ridge (CIR) through a sublithospheric flow channel (Duncan and Hargraves, 1990; Dyment et al., 2007; Bredow et al., 2017) though Conrad and Behn (2010) and Becker and Faccenna (2011) suggest deeper mantle circulation as the possible mechanism of the formation of Rodrigues Ridge. Samples collected from several sites along the ridge suggest that it is composed of basaltic rocks (Dyment et al., 2001). As Rodrigues Island is approximately 250 km from the active southern part of CIR, seismicity around it is generally characterized by events recorded along this ridge system (Figure 1). The largest magnitudes, 6.3 and 6.7, were recorded on 16 August 2010 and 26 July 2012, respectively at the CIR near Rodrigues. It was



also observed that earthquakes with magnitudes 6 or greater are concentrated along Marie-Celeste fracture zone (MCFZ) only. Krishna et al. (1998) reported six events between October and November 1984 near the ridge, on the east of the spreading segment, between Egeria fracture zone (EFZ) and MCFZ. Similarly, Bergman et al. (1984) have reported a large number of 'off-ridge' earthquakes in the region of the Southeast Indian Ridge. Interestingly, there are two segments along the CIR, between MCFZ and EFZ, for which the global catalogues are void of any seismicity (denoted GAP 1 and GAP 2 in Figure 1).

In this study we use seismological array techniques (Harjes and Henger, 1973; Husebye and Ruud, 1989; Rost and Thomas, 2002) to characterize the seismic activity around in the region of Rodrigues Ridge and to confirm the seismic gaps and provide possible explanations for them. The data for this study was collected from temporary deployment of a seismic array on Rodrigues Island between 9/2014 and 6/2016 (Figure 2).

## 2 Methods and data analysis

### 2.1 Array configuration

In order to study the seismicity around Rodrigues Ridge, we deployed an array of 10 seismic stations on the island of Rodrigues located at about 19°42'S and 63°25'E approximately 250 km west of the CIR. Rodrigues array design is based on classical 9-element arrays that use 3 and 5 seismic sensors located along two concentric rings, respectively, with an additional sensor placed in the center. The benefit of this configuration is that, with irregular sensor spacing, it provides a relatively sharp maximum of the array response function (Haubrich, 1968). For Rodrigues array, we deployed 10 sensors in a similar configuration with the ~1.5 km radius of the inner ring and an outer ring of radius ~2.5 km (Figure 3). The final locations of the individual stations were then chosen according to the local conditions on the island (such as accessibility by roads, etc.). Each station consisted of MARK L-4C-3D (1 Hz) sensor and an Omnirecs CUBE datalogger recording at a sampling rate of 100 Hz.

The relatively large aperture of the array (~5 km) was chosen based on events listed in the USGS database, which are located at the CIR near Rodrigues and were also recorded at the permanent station RODM. This GEOSCOPE station was relocated during the course of the array deployment. The dominant frequency of these events is close to about 2 Hz. However, it became clear later that the dominant frequency of most earthquakes recorded by the newly-installed array is approximately 5 Hz. Therefore, we decided to perform the array analysis in the time domain, or equivalently, for a wide frequency range, to reduce possible ambiguities resulting from sidelobes in the array response function (Figure 3), as will be discussed further below. [A similar approach was also used by Leva et al \(2019\).](#)

### 2.2 Epicentral distance and origin time

For regional earthquakes, the slowness (apparent velocity) cannot be used to determine the epicentral distance of an event, as the raypath is mainly confined within the uppermost mantle and the depth variations of velocity are not well constrained. We, therefore, use the arrival-time difference between the S and P waves in conjunction with a simplified 1-D velocity model of the crust and upper mantle to approximately determine the epicentral distance.

In this model, we keep the hypocentral depth fixed at 6 km and the raypath corresponds to a head wave (Figure 4). From receiver-function analysis (Fontaine et al., 2015), a Moho depth of 10 km has been determined beneath Rodrigues Island. We

fix the crustal thickness in our laterally-homogeneous model to this value, such that the thickened oceanic crust is accounted for on the receiver side leg of the raypath. For the P-wave velocity in the crust, we assume  $V_p^C = 6.1 \text{ km/s}$  and in the mantle  $V_p^M = 7.9 \text{ km/s}$  with a  $V_p/V_s$  ratio of 1.80 ~~based on the values~~ as suggested by [results of](#) Christensen (2004),<sup>‡</sup> Kong et al. (1992),<sup>‡</sup> Wolfe et al. (1995) and Grevenmeyer et al. (2013). We explored the influence of these parameters on the determination of the epicentral distances for the events that occurs at the distances of  $\sim 120$  and  $\sim 265$  km from the array. As shown in Figures [S1](#) and [S2](#) of supporting information, results are most sensitive to variations of the P-wave velocity in the mantle and  $V_p/V_s$ , owing to its contribution to the raypath.

The final value for the epicentral distance of an event (with respect to the center of the array) is obtained by taking the mean of the distance values determined at all stations of the array. Stations for which the recordings do not exhibit a clear onset for either the P- or S-phase are discarded from this calculation. The standard deviation (SD) is used to define the error of the distance calculation.

To determine the event origin time,  $t_{\text{origin}}$ , the travel time,  $t_{\text{tt}}$ , was calculated from the distance obtained from the S- and P-wave travel time difference for the central (reference) station. By subtracting this value from the manually-picked P-wave arrival time,  $t_p$ , we obtain  $t_{\text{origin}} = t_p - t_{\text{tt}}$ , where it is assumed that  $t_p$  is given as an absolute time value.

### 2.3 Magnitude determination

In order to calculate the magnitude of an event, [we account for the sensitivity of the recording system \(CUBE datalogger and 1 Hz MARK sensor\) and integrate](#) ~~the instrument response is removed from~~ the velocity seismogram, which is then convolved with the Wood–Anderson transfer function to obtain the ground [displacement](#) ~~motion~~ in nanometers. Magnitudes are determined [based on the maximum \(absolute\) amplitude of the horizontal components](#) using all available stations for which the recordings show a clear (dominant) S-phase ~~after convolution with Wood–Anderson transfer function~~. Again, the mean and the SD of the magnitude value is calculated. As most of the events are located well within 1000 km radius, we use the relation given by Havskov and Ottemöller (1999) in SEISAN package to determine the local magnitude

$$M_L = \log_{10}(A) + 1.1 \times \log_{10}(\Delta) + 0.00189 \times \Delta - 2.09 \quad (1)$$

where  $A$  is the amplitude (in nm) and  $\Delta$  is the epicentral distance (in km).

### 2.4 Beamforming and array transfer function

In seismic array analysis, the slowness and the backazimuth of an event are determined by beamforming. Assuming a plane wave front of horizontal slowness  $s_0$  moving across the array with an apparent velocity ( $v_a = 1/|s_0|$ ), the waveform at station  $j$  is given by

$$w_j(t) = w(t - \mathbf{r}_j \cdot \mathbf{s}_0) \quad (2)$$

where  $\mathbf{r}_j$  defines the position of the station with respect to a suitable coordinate system.

For an array consisting of  $M$  stations, the beam energy is calculated from the trace amplitudes within a suitable time window defined by  $t_1$  and  $t_2$  according to (e.g., Harjes and Henger, 1973; Rost and Thomas, 2002)

115

$$E = \int_{t_1}^{t_2} y^2(t) dt = \int_{t_1}^{t_2} \left[ \frac{1}{M} \sum_{j=1}^M w_j(t + \mathbf{r}_j \cdot \mathbf{s}) \right]^2 dt, \quad (3)$$

where  $\mathbf{s}$  denotes the (trial) slowness for the current beam. The beam energy reaches a maximum, if  $\mathbf{s} = \mathbf{s}_0$ . The backazimuth is then obtained from slowness components according to  $\tan^{-1}(s_{0,x} / s_{0,y})$  where  $x$  and  $y$  correspond to the eastern and northern components, respectively (see details given below).

120

In view of equation (1) and using Parseval's theorem in combination with the shift theorem of Fourier transforms, we can write the energy in the form

$$E = \frac{1}{2\pi} \int_{\omega_1}^{\omega_2} \bar{y}^2(\omega) d\omega = \frac{1}{2\pi} \int_{\omega_1}^{\omega_2} \bar{w}^2(\omega) C(\omega, \mathbf{s} - \mathbf{s}_0) d\omega \quad (4)$$

125

where the bar denotes Fourier-transformed functions and the array transfer function,  $C(\omega, \mathbf{s} - \mathbf{s}_0)$ , in the frequency-slowness domain is given by (e.g. Schweitzer, 2002)

$$C(\omega, \mathbf{s} - \mathbf{s}_0) = \left[ \frac{1}{M} \sum_{j=1}^M e^{i\omega \mathbf{r}_j \cdot (\mathbf{s} - \mathbf{s}_0)} \right]^2. \quad (5)$$

130

It is further assumed that  $\bar{w} = 0$  is outside of the range of integration used in equation (4). The array transfer function defines the sensitivity and resolution of the array for seismic signals with frequency  $\omega$  (Figure 3).

## 2.5 Data example

135

All the events for this study were detected by manual inspection of hourly traces from all stations of Rodrigues array using the SEISAN package (Havskov and Ottemöller, 1999). A time window of 120 s was cut around each event using the GIPPTool software (<http://www.gfz-potsdam.de>).

140

As shown in Figure 5, we estimate the epicentral distance from the arrival-time differences of the S and P waves. The STA/LTA ratio of the Z-component trace is calculated to aid in the manual picking of the two arrivals. [All S picks were made independently and are based on visual inspection of horizontal components as well as vertical where necessary.](#) The mean of the P-phase picking time, calculated from all the picks, is used to determine the time window to calculate the beam energy later in the array analysis. For this example, the arrival-time difference is 13.3 s, which corresponds to a distance of approximately 119 km (Table S1). Finally, the magnitude of the event is calculated from equation (1). Here, we obtain a magnitude 3.0. In the following, we apply this methodology to all events detected that exhibit a clear P and S-wave onset.

145

Conventionally, array analyses are performed in the frequency domain, which is computationally advantageous as the energy stacking can be limited to the dominant frequency or a narrow frequency band. As explained above, however, we perform the array analysis in the time domain to include the complete waveform of the first arrival. The time-domain analysis corresponds to a broad-band energy stack and suppresses the effects of unwanted sidelobes, but there is an additional benefit: the frequency domain approach usually requires selection of a common time window for all traces before the Fourier transform is applied.

150 In cases of significantly different arrival times of the phase to be analyzed (e.g., due to a large aperture of the array), a relatively wide common time window has to be selected such that the cut waveforms of individual traces may be significantly different. In the time domain, however, we can time shift the traces (with respect to the trial slowness value) before cutting and stacking, which may then be performed within a much narrower time window. This approach ensures that only the relevant waveform is contained within the stack, provided that the correct time shift has been applied.

155 Our analysis involves applying time shifts to all the traces with respect to reference trace (no. 1) for different values of slowness, defined by a grid, and calculating the energy of the resulting stacked trace or beam within the time window of the first arrival which is selected using mean of the P-wave picks on all the usable traces for a given earthquake. Only vertical (Z) component traces from all stations were used for the beamforming.

160 Figure 6(a) shows the Z-component traces for an earthquake on 6 April 2015 originating at 20:25:42h. A band pass between 2 and 10 Hz is applied. The trace number on the vertical axis corresponds to the respective station number. The amplitudes of trace 3 are set to zero as it did not show a clear event.

165 At first, a relatively wide time (~~~2 s~~) window (~2 s) is automatically chosen to zoom-in on the P-phase (Figure 6b). Then, a narrower time window (~ 0.6 s or about three dominant periods wide, as indicated by the red vertical lines) is automatically selected with respect to reference trace 1 based on the P-phase picking on all the traces. Time shifts are applied to all other (normalized) traces in correspondence to the slowness values of the grid which is used in the energy stack (Figure 6c). The stack, however, is only calculated from the trace segments within the narrow time window.

170 A predefined grid with slowness from -0.3 to 0.3 s/km, equally spaced over  $248 \times 248 = 61,504$  points is used for calculating the appropriate time shifts for each trace and the resulting energy. The red circle in Figure 6c denotes the maximum beam energy at  $s_0 = (0.06, 0.07)$  s/km which corresponds to a backazimuth  $\Phi = \sim 38^\circ$  and  $v_a = \sim 10.6$  km/s. We assume that this relatively large value for the apparent velocity results from steepening of the raypath at shallow depth beneath Rodrigues Island (where the propagation velocity is smaller than 6.1 km). The corresponding shifted traces and the beam (by summing the amplitudes of all traces) are shown in Figure 6d.

The values of slowness components thus obtained, were used to calculate the corresponding apparent velocity,  $v_a$ , and the backazimuth,  $\Phi$  of the event according to

$$v_a = 1 / \sqrt{s_{0x}^2 + s_{0y}^2} \quad \text{and} \quad \Phi = (180^\circ / \pi) \tan^{-1}(s_{0x} / s_{0y}) \quad (6)$$

where  $s_{0x}$  and  $s_{0y}$  are the values of slowness vector obtained for the beam with maximum energy.

185 To estimate the error in backazimuth,  $\delta\Phi$ , we define the area enclosed by the contour at a level of 95% of the maximum beam energy as a confidence region. The error in backazimuth in terms of kilometers ( $\delta\Phi_{\text{km}}$ ) is then given by

$$\delta\Phi_{\text{km}} = (\pi / 180^\circ) \delta\Phi \Delta \quad (7)$$

where  $\Delta$  is the epicentral distance (in km) and  $\delta\Phi$  is given in degrees.

### 3 Comparison with event locations from global networks

190 The larger earthquakes along the CIR picked up by the global networks are listed in the earthquake database provided by USGS (<https://earthquake.usgs.gov/earthquakes/search/>). Thirty events reported in the catalog<sup>ue</sup> were also recorded by Rodrigues array. Six of these events exhibit sufficient signal-to-noise ratio to perform the array analysis for a comparison with the USGS-reported locations.

195 ~~The mean distance of the event was calculated using distances from all the stations that provided clear P- and S-phases. Figure 7 shows the 3-component seismogram and the STA/LTA trigger function to identify the onset times. The arrival time difference of -24.63 s corresponds to a distance of -231 km (based on the model described above). For the magnitude, we derive  $M_L = 3.1$ .~~

200 Geographical coordinates, origin times, and magnitudes for the six events [obtained from the array analysis](#) are shown in Table 1. They can be compared with the results provided by the USGS database (Table 2). Magnitudes obtained from the array analysis are slightly lower than those reported by USGS. This may be in part due to different magnitude scales used (local magnitude versus body wave magnitude). Ristau (2009) compared different magnitude scales for New Zealand earthquakes, where  $m_b$  was lower than  $M_L$  for deep focus (>33 km) events but the results were fairly consistent for shallow ( $\leq 33$  km) earthquakes. In the current study, we consider that the data is not sufficient to derive a relationship between  $m_b$  and  $M_L$ .

205 [Amplitude variations related to the different radiation directions relevant for regional \(at Rodrigues island\) and teleseismic recordings may also play a role. In addition, the amplitudes for the dominantly horizontal Pn raypaths from the recordings at Rodrigues may be more affected by regional attenuation processes, as described further in the next section.](#)

210 The array analysis for the six events was performed as described above. An example is given in Figures [7 and 8](#) for an event of 14 February 2015 at 07:08:59h. P and S phases are clearly visible and the dominant frequency of the P-wave arrival for this event is about 3.5 Hz. From the array analysis, we obtain a clear maximum for  $s_0 = (0.07, 0.08)$  s/km which corresponds to a backazimuth  $\Phi \sim 39^\circ$  and apparent velocity  $v_a \sim 9.5$  km/s. The time shifts derived from the obtained slowness value according to  $\delta t_j = \delta r_j \cdot s_0$  (where  $\delta r_j$  corresponds the position of station j with respect to the reference station) yield a good alignment of the P-wave signal.

215 [The mean distance of the event was calculated using distances from all the stations that provided clear P- and S-phases. Figure 7 shows the 3-component seismogram and the STA/LTA trigger function to identify the onset times. The arrival-time difference of -24.63 s corresponds to a distance of -231 km \(based on the model described above\). For the magnitude, we derive  \$M\_L = 3.1\$ .](#)

220 For three events, we obtain small variations in backazimuth, which are well within the error estimations. Events on 24 November 2014 at 22:23:23<sup>h</sup>, 2 April 2016 at 18:01:49h and 2 June 2016 at 21:18:10h show differences of about  $11^\circ$ ,  $9^\circ$  and  $7^\circ$ , respectively. Array-derived distances from the reference station are generally smaller than those given in USGS catalog<sup>ue</sup> except for the event of 02 April 2016 at 17:53:21h, where the distance obtained from array analysis is well within the error

225 range.

We attribute these differences to local inhomogeneities not accounted for in the array analysis and to the simple 1-D model used for the distance estimates (in addition to possible errors in the global locations). Figure [S3 of supporting information](#)<sup>8</sup> shows a comparison of the results obtained by the array analysis with those provides by the USGS catalogue. Generally, the

230 results agree well. On average, location differences are about 17 km, which is a reasonable value considering the uncertainties of the approach.

#### 4 Results and Discussion

235 Using the array technique, we were able to detect and locate 63 earthquakes in the Rodrigues–CIR region that are not reported by [the USGS catalogue](#) ~~any global network~~ (Figure 9). The details of all the events, such as event location, origin time, and magnitude are summarized in Table S1 (supporting information). The magnitudes of these events range from 1.~~3–6~~ to 3.~~5–7~~ and are spread out in a region of radius up to 600 km from the array. The nearest event to Rodrigues Island ( $M_L$  1.5) occurred on 12 February 2016 at 19:21:45h, to the north of the island at a distance of about 36 km.

240 Of the 63 events, 51 are located off the ridge axis and can therefore be classified as intraplate earthquakes. Twelve events were located very close to the ridge axis ~~and are not being considered as intraplate events~~. Twenty-four events occur between backazimuths of 29° and 42° at a distance of about 120 km and exhibit magnitudes between 1.~~3–6~~ and 3.0 (Figure 9). Almost all events in this backazimuths (20) occur from March to April 2015 (Figure 10). Magnitudes for this cluster of earthquakes are variable and do not follow a certain (main shock–after shock) pattern (Cluster 1, Table S2 of supporting information). Detailed bathymetry indicates a step-like non-transform discontinuity at the south-eastern end of this chain of events.

245 Three more clusters occur to the east, south and to the north-west of Rodrigues at distances of about, 265, 140 and 220 km with 6, 3 and 7 events, respectively. This is further corroborated by Figure 10, where events' longitude and latitude are plotted as functions of time. Also shown is the monthly number of events, which exhibits a clear maximum for March 2015 in relation to the activity of Cluster 1. As Cluster 4 (~~~~~220 km east of Rodrigues Island) is close to the ridge axis, events of this cluster are not considered as intraplate events.

250 As shown in the sensitivity test provided in the supplementary information (Figures S1 [and](#) S2), the location errors for Cluster 1 are much smaller as compared to Cluster 3, partially owing to their distance from the Rodrigues array. Some influence of anisotropic velocity variation may also be possible, as studies by Barruol and Fontaine (2013) and Scholz et al. (2018) suggest fast-axis directions [trending east–west](#) around the Rodrigues–CIR region.

255 Various mechanisms [providing explanation](#) to the cause of intraplate seismicity have been proposed previously. De Long et al. (1977) suggested that ~~due~~-different [lithospheric](#) ages across the fracture zones, as [also](#) observed in the Rodrigues–CIR region, [are related to](#) ~~may have~~ differential subsidence causing stresses and hence earthquakes. Similarly, Collette (1974) and Turcotte (1974) suggested thermal contraction ~~of the oceanic crust~~ [due to different ages of](#) [along the oceanic crust](#) (Müller et al., 2008) ~~-as~~ another possible mechanism. [This may](#) ~~can~~ [be substantiated by the seismicity observed in clusters 2 and 3 as they occur along possible prolongations of](#) ~~the~~ [fracture zones](#). Mantle-derived carbon dioxide discharge (e.g., Bräuer et al., 2003; Gold and Soter, 1984/85; Irwin and Barnes, 1980) can also provide an explanation for the intraplate seismic activity around the Rodrigues–CIR region as most of the detected events occur in clusters [1 and 4 which are not related to fracture zones](#). In ~~the~~ [continental regions](#), similar clustering has been associated with carbon-dioxide discharge (e.g., Lindenfeld et al., 2012).

265 It is interesting to note that of the two seismic gaps along the [slow-spreading](#) CIR, as indicated above, still show no seismic activity based on the new data. Thus, these seismic gaps, may indeed, represent an anomalous section of the CIR that is deforming aseismically. The anomalous nature of this region is further corroborated by the fact that globally-recorded events from the ~~f~~[a](#) further southern section of CIR are not detected by the array (see events south of -20° in Figure [8S3 of supporting](#)

[information](#)). This could be explained by a more extended region of partially-molten material in the upper mantle that causes significant attenuation of wave amplitudes for the corresponding raypaths (Figure 49), as also suggested by Mazzullo et al. (2017). In combination with the absence of any seismic activity along Rodrigues Ridge, this may be taken as evidence for the explanation of Rodrigues Ridge as a surface expression of the interaction of the Reunion Hotspot with the CIR through a sublithospheric flow channel (Morgan, 1978; Dymant et al., 2007; Bredow et al., 2017). Another explanation for the lack of seismicity in GAPS 1 and 2 could be excessive magmatism and a ~~resulting~~ [resulting](#) relatively thin lithosphere which does not support large earthquakes ~~(as suggested by see Cannat, (1996) and (Grevemeyer et al., 2013).~~

[Based on hydroacoustic data, similar seismic gaps were also observed along the intermediate-spreading Southeast Indian Ridge \(Tsang-Hin-Sun et al., 2016\) and the slow-spreading Mid-Atlantic Ridge \(Escartin et al., 2008; Simao et al. 2010\), where events were focused on ridge-segments ends. This uneven distribution of seismicity along CIR, thus, suggests segment-scale variation in lithosphere structure, also observed in Southeast Indian Ridge \(Tsang-Hin-Sun et al., 2016\) and Mid-Atlantic Ridge \(Goslin et al., 2012\).](#)

## 5 Conclusions

We installed a 10-station seismological array on Rodrigues Island to study the seismicity along a remote section of the CIR and nearby areas including Rodrigues Ridge. The results show that array analysis provides a valuable tool to study earthquake activity in oceanic regions which are relatively inaccessible otherwise. The region around Rodrigues Island clearly shows evidence of intraplate seismicity. Of the 63 events detected by Rodrigues array, the majority are located within [Cluster 1](#) ~~a cluster~~ at a distance of ~120 km from the island with backazimuths between 29° and 42°. The local magnitude ( $M_L$ ) of the events detected range between 1.3 and 3.5. Three additional event clusters were identified. [Possible explanations for the off-axis seismic activities are](#) ~~A possible explanation for this seismic activity observed in cluster 1 is  $CO_2$  is  $CO_2$  degassing from the mantle and as most of the events are distributed within these are recorded in this clusters instead of being distributed more linearly along fault zones. Clusters 2 and 3, observed at the prolongation of the fracture zone, substantiated the theory of differential thermal contraction, whereas due to different ages along the oceanic crust. Events in Cluster 4, being close to ridge axis, are have not been considered as intraplate events.~~ The lack of seismic activity along both Rodrigues Ridge and a section of the CIR to the east of Rodrigues (GAP 2) may be explained by partially-molten upper-mantle material, possibly in relation to the proposed material flow from the Reunion plume and the CIR (Morgan, 1978; Dymant et al., 2007; Bredow et al., 2017). This explanation is further supported by the observation that relatively strong seismic events from the CIR, east to south-east of Rodrigues (which [are listed](#) ~~appear~~ in the USGS catalogue) are not detected by the array. However, a detailed geodynamic model for the ridge-plume interaction [in this region](#) is still needed. We anticipate that longer-term deployments of seismic arrays on Rodrigues and other remote islands of Mauritius, such as Agalega and St. Brandon, will provide further constraints on the seismic gaps along the CIR and the intraplate seismicity of the region. Dedicated deployments of Ocean Bottom Seismometers [or Hydrophones](#) (OBS/H) at or near these targets are another option for future studies.

[Data availability. The data used in this research are currently restricted. The data will be publicly available from GEOFON data archive of Deutsches GeoForschungsZentrum Potsdam as from July 2021.](#)

[Author contributions. MS and GR participated in fieldworks, data analyses, provided their interpretation and wrote the article.](#)

[Competing interests. The authors declare that they have no conflict of interest.](#)

[Financial support. The study presented here was funded by the Mauritius Oceanography Institute, Mauritius, through Ministry of Finance and by Deutsche Forschungsgemeinschaft \(DFG\) through a grant to GR.](#)

## 315 Acknowledgments

~~The study presented here was funded by the Mauritius Oceanography Institute, Mauritius, through Ministry of Finance and by a DFG grant to G.R.~~ The instruments for the temporary ~~array networks~~ were provided by the Geophysical Instrument Pool Potsdam at Deutsches GeoForschungsZentrum, Potsdam. ~~The data will be publicly available from GEOFON data archive of GeoForschungsZentrum as from July 2021.~~ We wish to thank the Government of Mauritius for allowing us to carry out the study, as well as the MOI and Rodrigues Regional Assembly (RRA) for the support provided during the fieldwork. We thank J. Dymant of IPGP for his suggestions [and comments regarding the on the origin of seismicity in Cluster 1 bathymetry around the CIR region](#). We also thank Frederik Link, Corrado Surmanowicz, Olivier Pasnin and Shane Sunassee for providing help during fieldworks in Rodrigues. [We thank the reviewers for the thorough reviews which helped to improve the manuscript.](#)

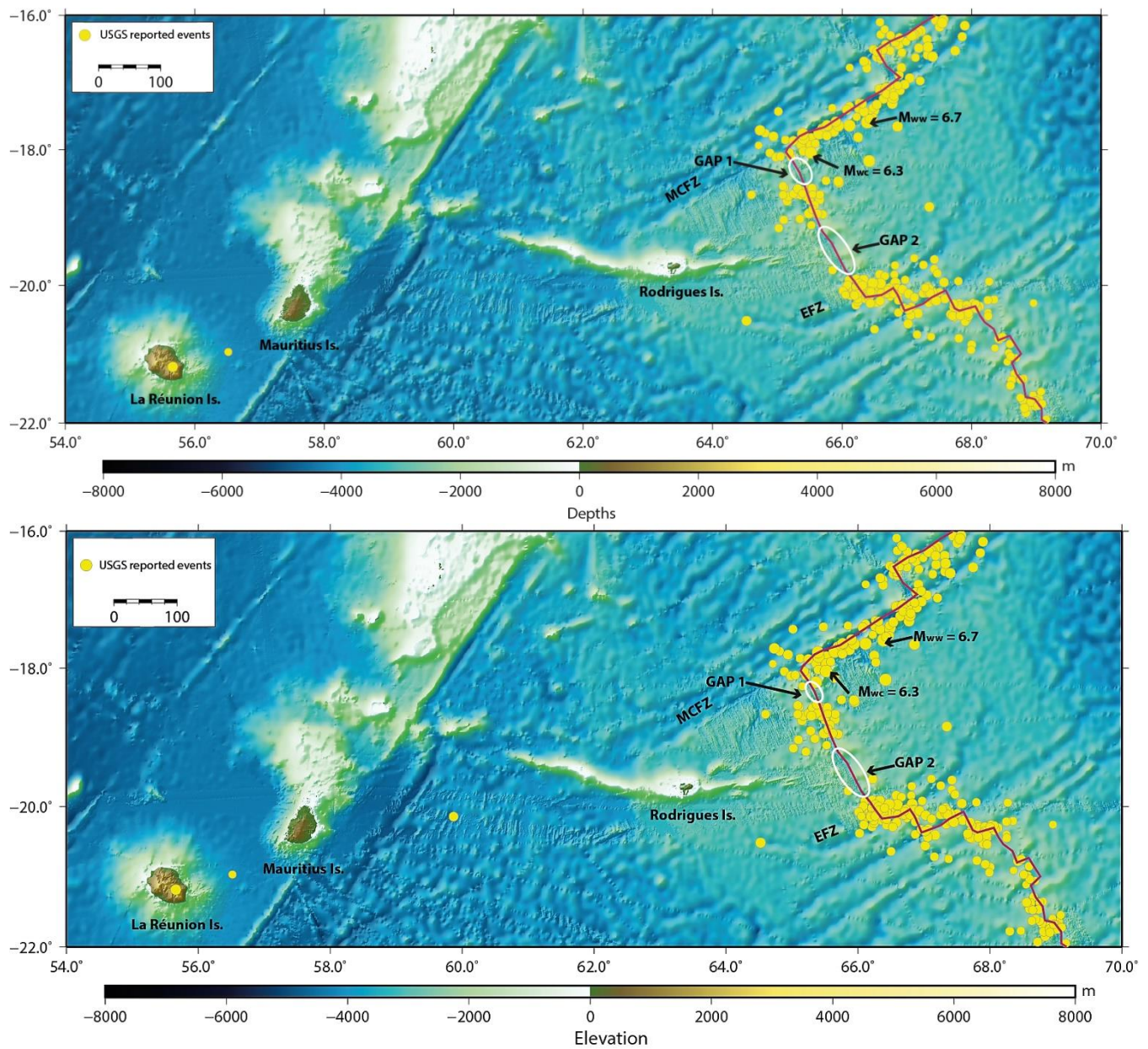
## References

- 325 Barruol, G. and Fontaine, F. R.: Mantle flow beneath La Réunion hotspot track from SKS splitting, *Earth Planet. Sci. Lett.*, 362, 108–121, doi: 10.1016/j.epsl.2012.11.017, 2013.
- Becker, T. W., and Faccenna, C.: Mantle conveyor beneath the Tethyan collisional belt, *Earth Planet. Sci. Lett.*, 310(3–4), 453–461, doi: 10.1016/j.epsl.2011.08.021, 2011.
- Bergman, E. A. and Solomon, S. C.: Oceanic intraplate earthquakes: Implications for local and regional intraplate stress, *J. Geophys. Res. Solid Earth*, 85(B10), 5389–5410, 1980.
- 330 Bergman, E. A., Nábělek, J. L., and Solomon, S. C.: An extensive region of off-ridge normal-faulting earthquakes in the southern Indian Ocean, *J. Geophys. Res.: Solid Earth*, 89(B4), 2425–2443, 1984.
- Bräuer, K., Kampf, H., Sträuch, G., and Weise, S. M.: Isotopic evidence ( $^3\text{He}/^4\text{He}$ ,  $^{13}\text{C}/^{12}\text{C}$ ) of fluid triggered intraplate seismicity, *J. Geophys. Res.* 108(B2), 2070, doi:10.1029/2002JB002077, 2003.
- 335 Bredow, E., Steinberger, B., Gassmöller, R., and Dannberg, J.: How plume-ridge interaction shapes the crustal thickness pattern of the Réunion hotspot track, *Geochem. Geophys. Geosyst.*, 18(8), 2930–2948, doi: 10.1002/2017GC006875, 2017.
- Cannat, M.: How thick is the magmatic crust at slow spreading oceanic ridges?. *J. Geophys. Res.: Solid Earth*, 101(B2), 2847–2857, doi: 10.1029/95JB03116, 1996.
- Christensen, N. I.: Serpentinities, peridotites, and seismology, *Int. Geol. Rev.*, 46(9), 795–816, doi:10.2747/0020-6814.46.9.795, 2004.
- 340 Collette, B. J.: Thermal contraction joints in a spreading seafloor as origin of fracture zones, *Nature*, 251(5473), 299, 1974.
- Conrad, C. P. and Behn, M. D.: Constraints on lithosphere net rotation and asthenospheric viscosity from global mantle flow models and seismic anisotropy, *Geochem., Geophys. Geosyst.*, 11(5), doi:10.1029/2009GC002970, 2010.
- De Long, S. E., Dewey, J. F., and Fox, P. J.: Displacement history of oceanic fracture zones, *Geology*, 5(4), 199–202, 1977.
- 345 Duncan, R. A. and Hargraves, R. B.:  $^{40}\text{Ar}/^{39}\text{Ar}$  Geochronology of basement rocks from the Mascarene plateau, the Chagos bank and the Maldives ridge, in: *Proceedings of Ocean Drilling Program, Scientific Results*, pp. 43–51, 1990.
- Dymant, J., Hémond, C., Guillou, H., Maia, M., Briais, A., and Gente, P.: Central Indian Ridge and Reunion hotspot in Rodrigues area: Another type of ridge-hotspot interaction? *Eos Trans. AGU* 82(47), Fall Meet. Suppl., Abstract T31D–05, 2001.
- 350 Dymant, J., Lin, J., and Baker, E. T.: Ridge-hotspot interactions: What mid-ocean ridges tell us about deep earth processes, *Oceanography*, 20(1), 102–115, 2007.

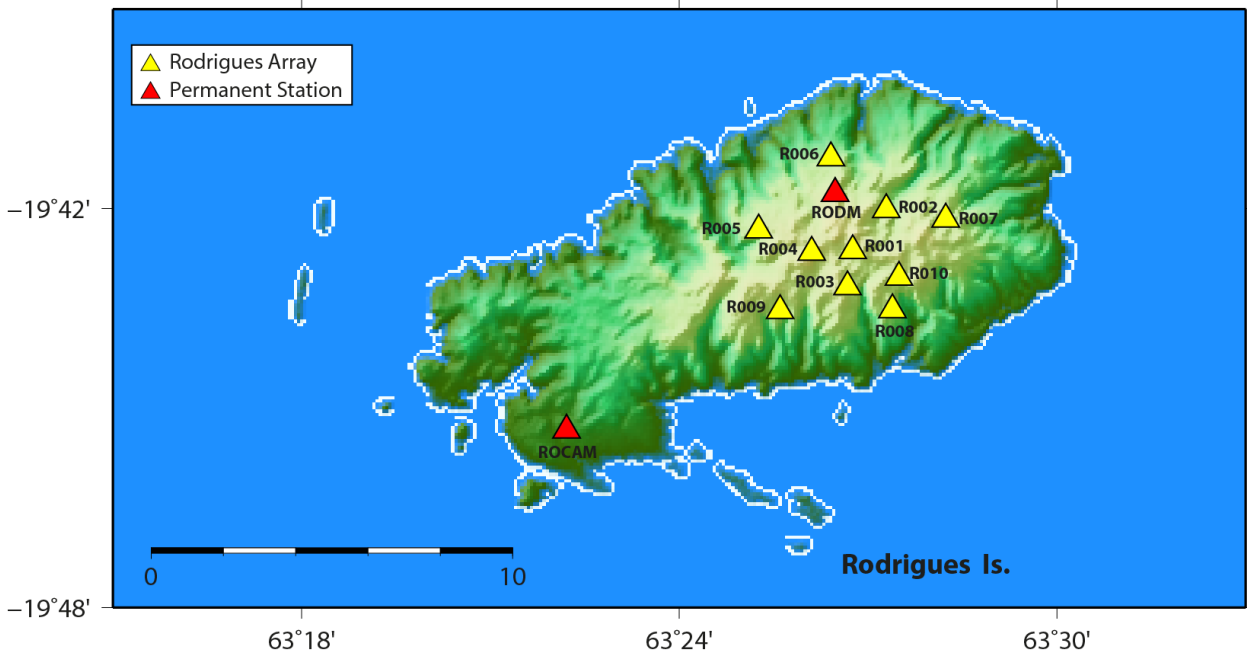


- Dyment, J., Gallet, Y., Briais, A., Drobia, R., Gac, S., Gente, P., Maia, M., Mercuriev, S., Patriat, P., Pouliquen, G., et al.: The magofond 2 cruise: a surface and deep-tow survey on the past and present central Indian ridge, *InterRidge News*, 1999.
- Escartín, J., Smith, D. K., Cann, J., Schouten, H., Langmuir, C. H., and Escrig, S.: [Central role of detachment faults in accretion of slow-spreading oceanic lithosphere, \*Nature\*, 455\(7214\), 790–794, 2008.](#)
- Fontaine, F. R., Barruol, G., Tkalčić, H., Wölbern, I., Rümpker, G., Bodin, T., and Haugmard, M.: Crustal and uppermost mantle structure variation beneath la Réunion hotspot track, *Geophys. J. Int.*, 203(1), 107–126, 2015.
- Grevemeyer, I., Reston, T. J., and Moeller, S.: Microseismicity of the Mid-Atlantic Ridge at 7°S–8°15'S and at the Logatchev Massif oceanic core complex at 14°40'N–14°50'N, *Geochem. Geophys. Geosyst.*, 14(9), 3532–3554, 2013.
- Gutenberg, B. and Richter, C. F.: Seismicity of the Earth, *Geol. Soc. Am., Special Papers*, 34, 1–126, 1941.
- Gold, T. and Soter, S.: Fluid ascent through the solid lithosphere and its relation to Earthquakes, *Pure Appl. Geophys.*, 122, 492–530, 1984/85.
- Goslin, J., Perrot, J., Royer, J. Y., Martin, C., Lourenço, N., Luis, J., Dziak, R. P., Matsumoto, H., Haxel, J., Fowler, M. J., and Fox, C. G.: [Spatiotemporal distribution of the seismicity along the Mid-Atlantic Ridge north of the Azores from hydroacoustic data: Insights into seismogenic processes in a ridge-hot spot context, \*Geochem. Geophys. Geosyst.\*, 13\(2\), 2012.](#)
- Harjes, H. and Henger, M.: Array-Seismologie, *Zeitschrift für Geophysik*, 39, 865–905, 1973.
- Haubrich, R. A.: Array design, *Bull. Seismol. Soc. Am.*, 58(3), 977–991, 1968.
- Havskov, J. and Ottemoller, L.: SeisAn Earthquake analysis software, *Seis. Res. Lett.*, 70, 1999.
- Husebye, E. and Ruud, B.: Array seismology—past, present and future developments, *Observ. Seismol.*, 23–153, 1989.
- Irwin, W. P. and Barnes, I.: Tectonic relations of carbon dioxide discharges and earthquakes, *J. Geophys. Res.* 85, 3115–3121, 1980.
- Kong, L. S., Solomon, S. C., and Purdy, G. M.: Microearthquake characteristics of a mid-ocean ridge along-axis high, *J. Geophys. Res.: Solid Earth*, 97(B2), 1659–1685, doi: 10.1029/91JB02566, 1992.
- Krishna, M. R., Verma, R., and Arora, S.: Near-ridge intraplate earthquakes in the Indian Ocean, *Mar. Geo.*, 147(1–4), 109–122, 1998.
- Leva, C., Rümpker, G., Link, F. and Wölbern, I.: [Mantle earthquakes beneath Fogo volcano, Cape Verde: Evidence for subcrustal fracturing induced by magmatic injection. \*J. Volcanol. Geotherm. Res.\*, 386, 106672, 2019.](#)
- Lindenfeld, M., Rümpker, G., Link, K., Koehn, D., and Batte, A.: Fluid-triggered earthquake swarms in the Rwenzori region, East African Rift—Evidence for rift initiation. *Tectonophysics*, 566, 95–104, doi: 10.1016/j.tecto.2012.07.010, 2012.
- Malecek, S. J. and Clowes, R. M.: Crustal structure near Explorer Ridge from a marine deep seismic sounding survey, *J. Geophys. Res.: Solid Earth*, 83(B12), 5899–5912, 1978.
- Mazzullo, A., Stutzmann, E., Montagner, J. P., Kiselev, S., Maurya, S., Barruol, G., and Sigloch, K.: Anisotropic tomography around La Réunion island from Rayleigh waves, *J. Geophys. Res.: Solid Earth*, 122(11), 9132–9148, doi: 10.1002/2017JB014354, 2017.
- Morgan, W. J.: Rodriguez, Darwin, Amsterdam,..., a second type of hotspot island, *J. Geophys. Res.: Solid Earth*, 83(B11), 5355–5360, 1978.
- Müller, R. D., Sdrolias, M., Gaina, C., and Roest, W. R.: [Age, spreading rates, and spreading asymmetry of the world's ocean crust, \*Geochem., Geophys., Geosyst.\*, 9\(4\), 2008.](#)
- Okal, E. A.: Oceanic intraplate seismicity, *Annu. Rev. Earth Plan. Sci.*, 11(1), 195–214, 1983.
- Ristau, J.: Comparison of magnitude estimates for New Zealand earthquakes: Moment magnitude, local magnitude, and teleseismic body-wave magnitude, *Bull. Seismol. Soc. Am.*, 99(3), 1841–1852, doi: 10.1785/0120080237, 2009.
- Rost, S. and Thomas, C.: Improving seismic resolution through array processing techniques, *Surv. Geophys.*, 30(4–5), 271–299, 2009.

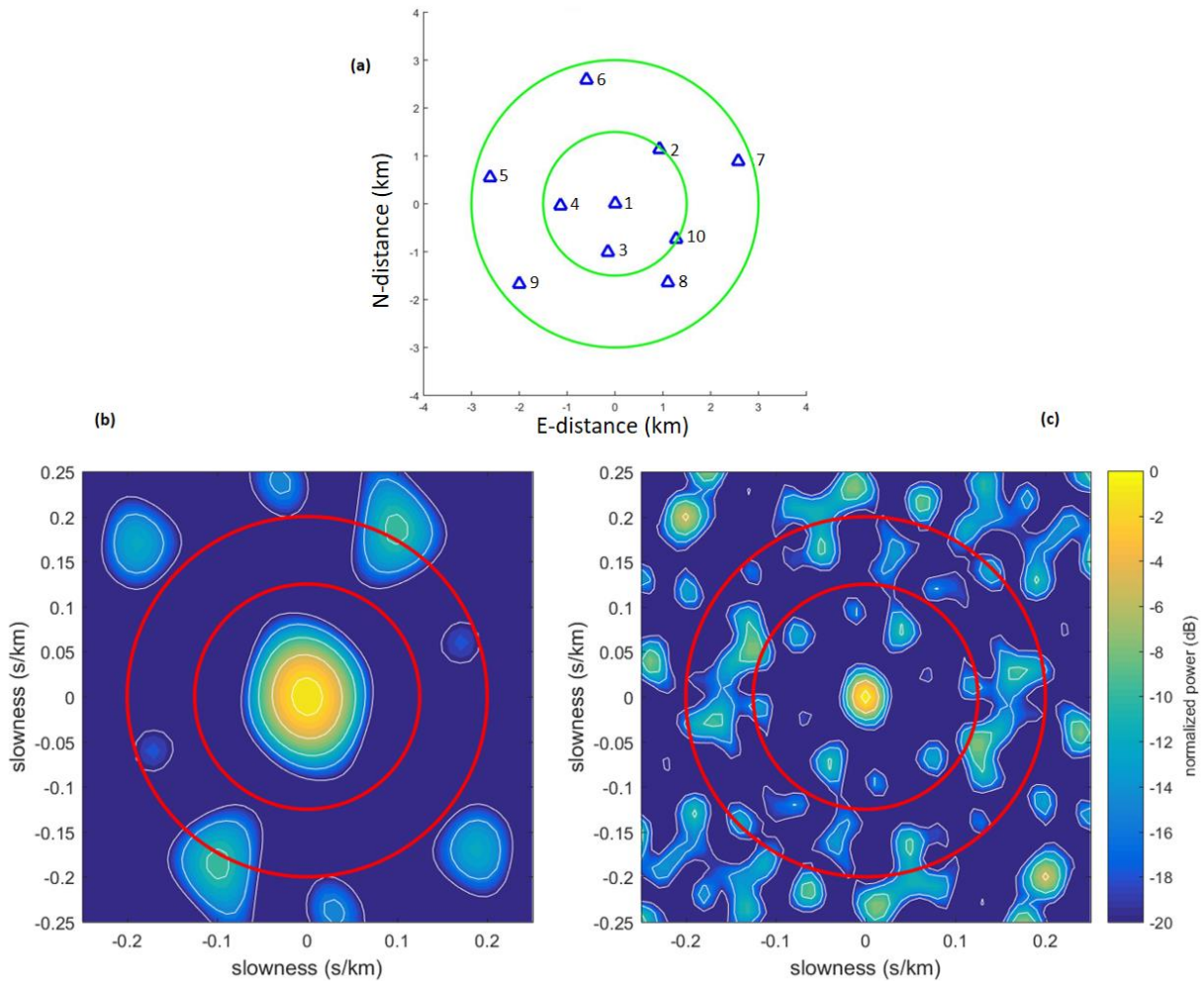
- 395 Saddul, P., Nelson, B. W., and Jahangeer-Chojoo, A.: Mauritius: A Geomorphological Analysis, vol. 3, Mahatma Gandhi Institute, Mauritius, 2002.
- Scholz, J. R., Barruol, G., Fontaine, F. R., Mazzullo, A., Montagner, J. P., Stutzmann, E., Michon, L., and Sigloch, K.: SKS splitting in the Western Indian Ocean from land and seafloor seismometers: Plume, plate and ridge signatures, *Earth Planet. Sci. Lett.*, 498, 169–184, doi: 10.1016/j.epsl.2018.06.033, 2018.
- Schweitzer, J., Fyen, J., Mykkeltveit, S., and Kværna, T.: Manual of seismological observatory practice, 2002.
- 400 [Simao, N., Escartin, J., Goslin, J., Haxel, J., Cannat, M., and Dziak, R.: Regional seismicity of the Mid-Atlantic Ridge: observations from autonomous hydrophone arrays, \*Geophys. J. Int.\*, 183\(3\), 1559–1578, 2010.](#)
- Sykes, L. R. and Sbar, M. L.: Intraplate earthquakes, lithospheric stresses and the driving mechanism of plate tectonics, *Nature*, 245, 298–302, 1973.
- 405 [Tsang-Hin-Sun, E., Royer, J. Y., and Perrot, J.: Seismicity and active accretion processes at the ultraslow-spreading Southwest and intermediate-spreading Southeast Indian ridges from hydroacoustic data, \*Geophys. J. Internat.\*, 206\(2\), 1232–1245, 2016.](#)
- Turcotte, D. L.: Are transform faults thermal contraction cracks?, *J. Geophys. Res.*, 79, 2573–2577, 1974.
- Wolfe, C. J., Purdy, G. M., Toomey, D. R., and Solomon, S. C.: Microearthquake characteristics and crustal velocity structure at 29° N on the Mid-Atlantic Ridge: The architecture of a slow spreading segment, *J. Geophys. Res.: Solid Earth*, 100(B12), 24449–24472, doi: 10.1029/95JB02399, 1995.



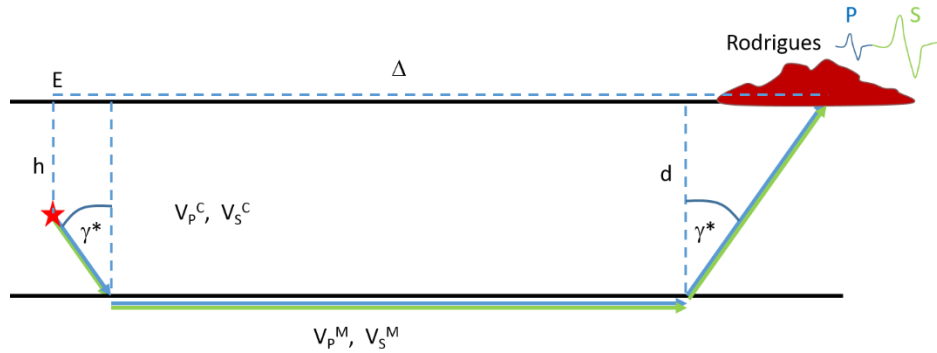
**Figure 1:** Tectonic setting of Rodrigues–Central Indian Ridge (CIR) region. The ridge axis is shown by solid line (red). Event locations from USGS catalog (2000/01–2020/19/02/08) are shown in yellow. MCFZ, Marie-Celeste fracture zone and EFZ, Egeria fracture zone. The gaps in seismicity (GAP 1 and GAP 2) along the section of CIR between MCFZ and EFZ have been marked by white ellipses.



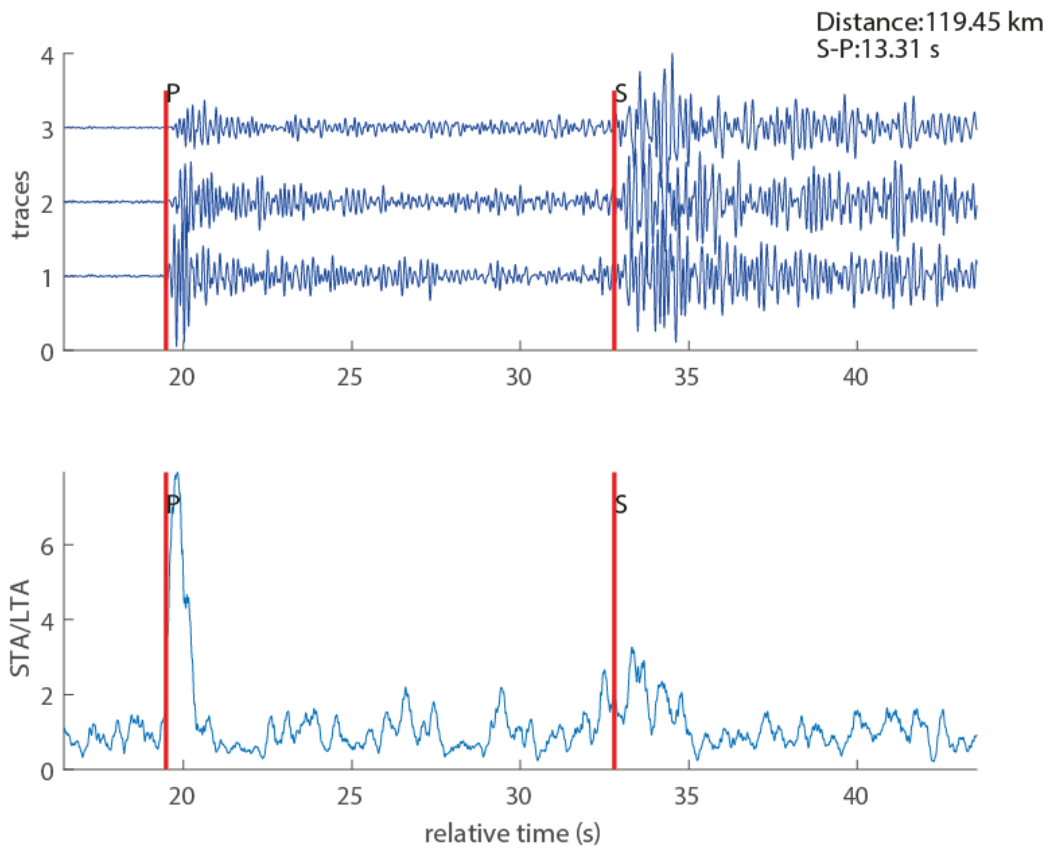
**Figure 2:** Locations of individual stations in Rodrigues array (yellow triangles). Red triangles denote permanent stations ROCAM and RODM. Station RODM was operational between 10/11/2010 and 07/09/2014.



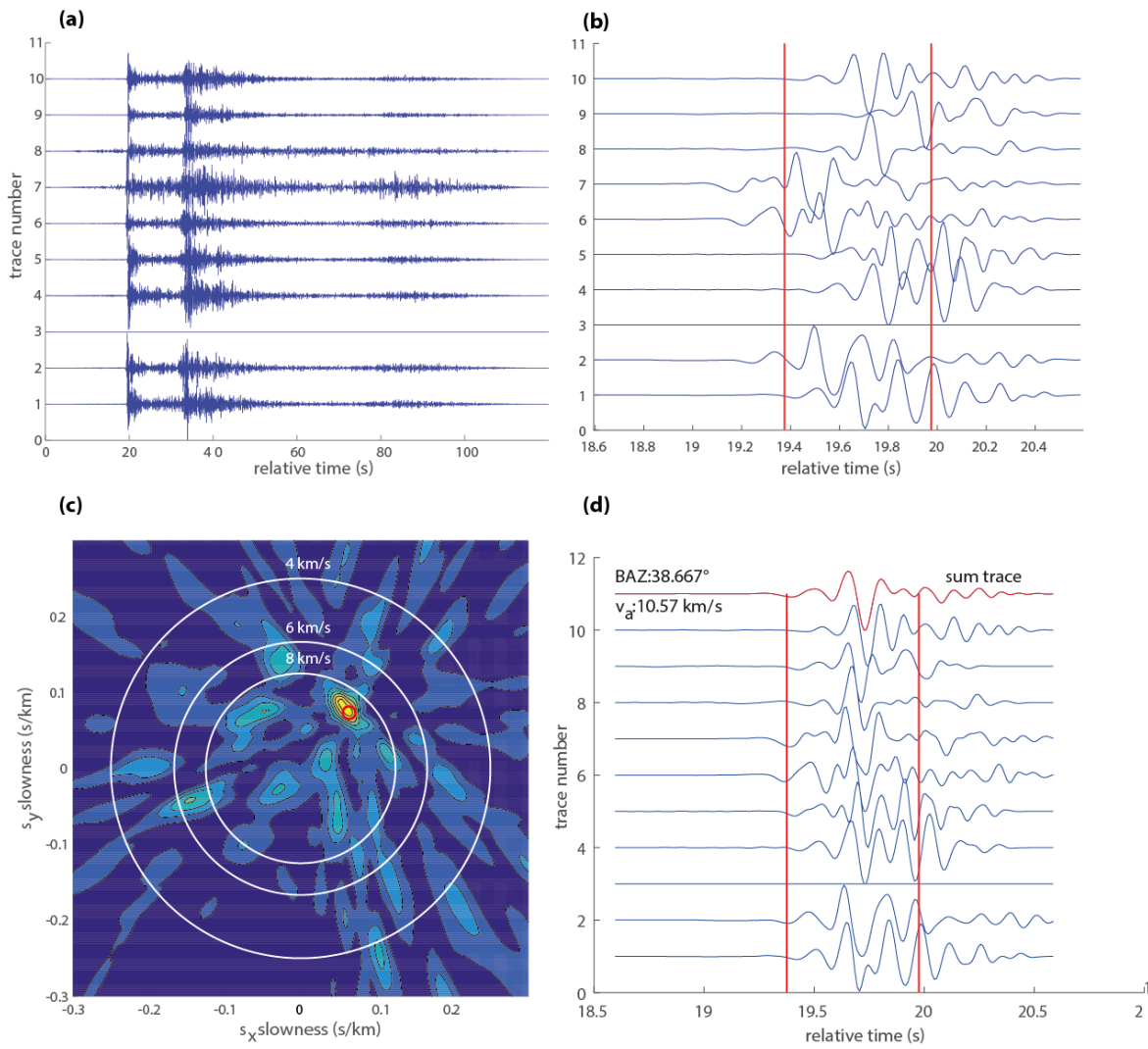
**Figure 3:** Configuration of the seismic array deployed on Rodrigues Island (a). Station locations are indicated by blue triangles. The green circles represent inner and outer rings of the array with a radius of  $\sim 1.5$  and  $\sim 2.5$  km, respectively, from the central (reference) station. The array transfer function of the Rodrigues array is shown at 2 Hz (b), and 5 Hz (c). The inner and the outer red rings correspond to an apparent velocity of 8 and 5 km/s, respectively. In the real-data analysis, the apparent velocity at which the maximum occurs, is used as a first indication to discriminate between crustal and upper-mantle raypaths.



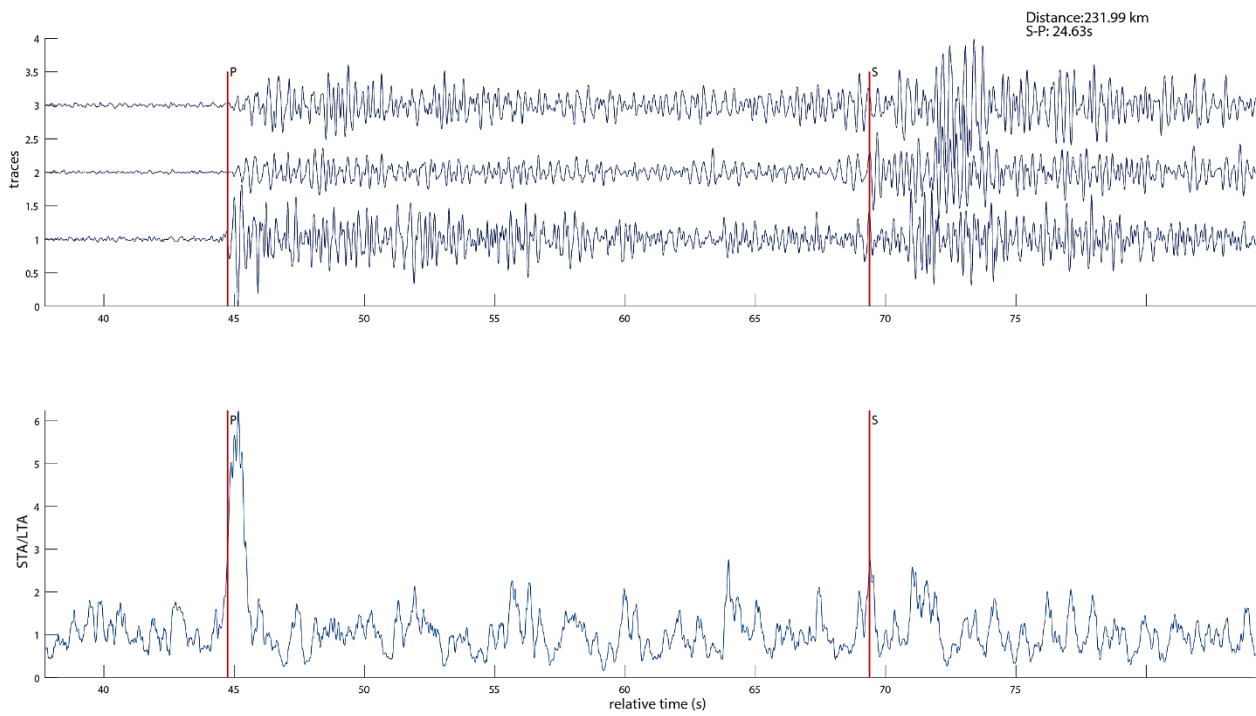
**Figure 4:** Cartoon depicting the model employed to estimate epicentral distances from travel-time differences between S- and P-wave arrival. The simple 1-D velocity model of the oceanic crust and uppermost mantle consists of a uniform layer overlying a uniform half-space. The parameters are set as follows: thickness of the crust,  $d = 10$  km; hypocentral depth,  $h = 6$  km; P-wave velocity in the crust,  $V_p^C = 6.1$  km/s ; P-wave velocity in the mantle,  $V_p^M = 7.9$  km/s ;  $V_p/V_s = 1.80$  in both crust and mantle. Figures [S1](#) and [S2](#) (supporting information) shows the influence of these parameters on the determination of the epicentral distance.



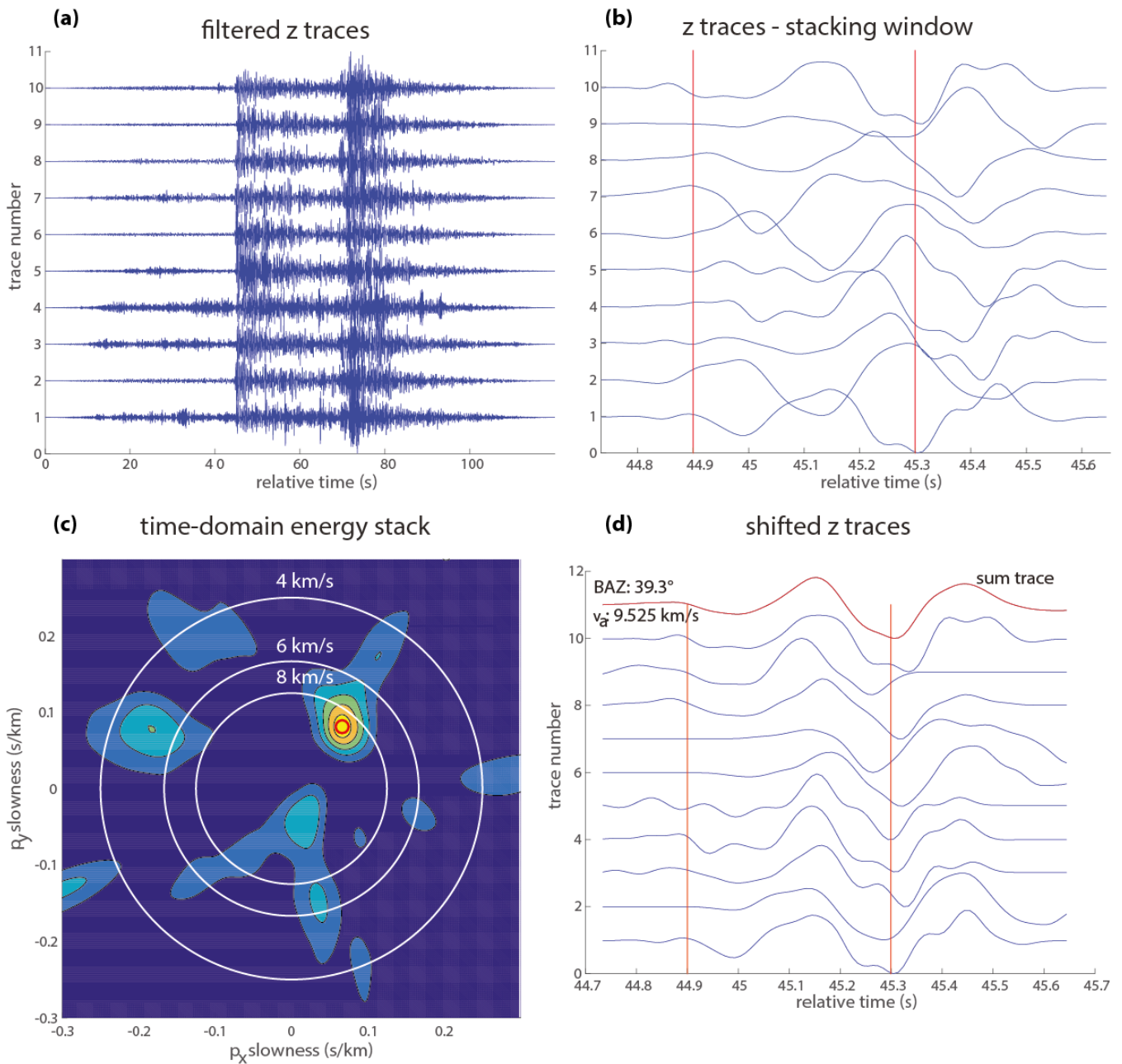
**Figure 5:** Estimating the epicentral distance from the arrival time difference between S- and P waves at the ~~for~~ reference station 1. The vertical, North and East components are shown by traces 1, 2 and 3, respectively (upper panel). The vertical red lines panel show manually-picked P- and S-phases. The picking is aided by calculating the STA/LTA of the Z-component (lower panel).



**Figure 6:** Array analysis of a regional event near Rodrigues. (a) Vertical-component traces; station 3 was not recording at the time of the event. (b) Zoom-in of the P-waveforms. After applying the time shift corresponding to a trial slowness  $s$ , the beam energy is calculated from squared amplitudes within the time window enclosed by the red lines. (c) Beam energy as function of horizontal slowness components  $s_x$  and  $s_y$ . The maximum is marked by a red line and corresponds to the slowness  $s_0$ . White circles denote apparent velocities,  $v_a$ , of 4, 6, and 8 km/s. (d) Shifted traces and beam (red trace) corresponding to the maximum indicated in (c). The backazimuth of this event is determined at about  $38^\circ$  with an apparent velocity of 10.57 km/s.

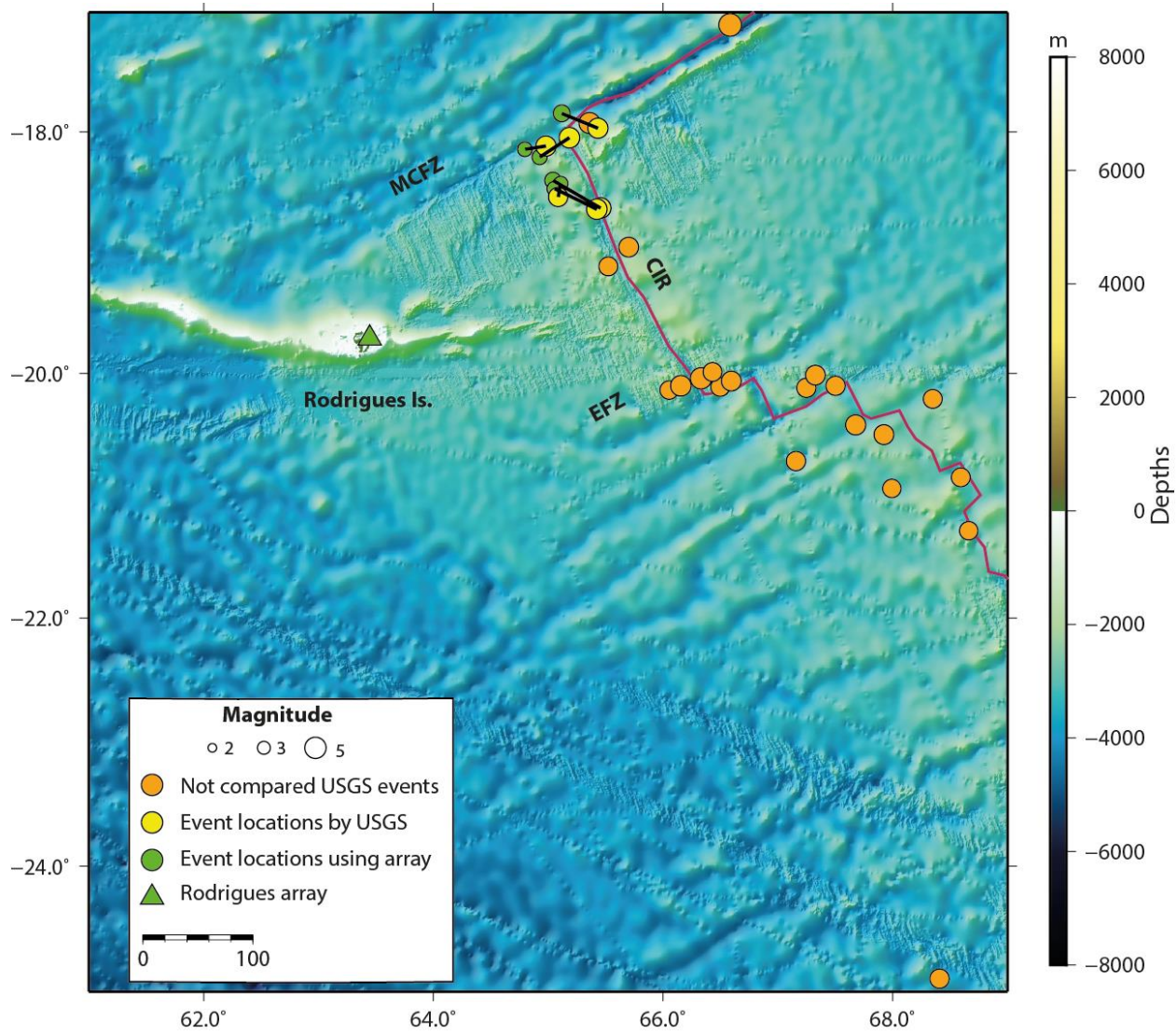


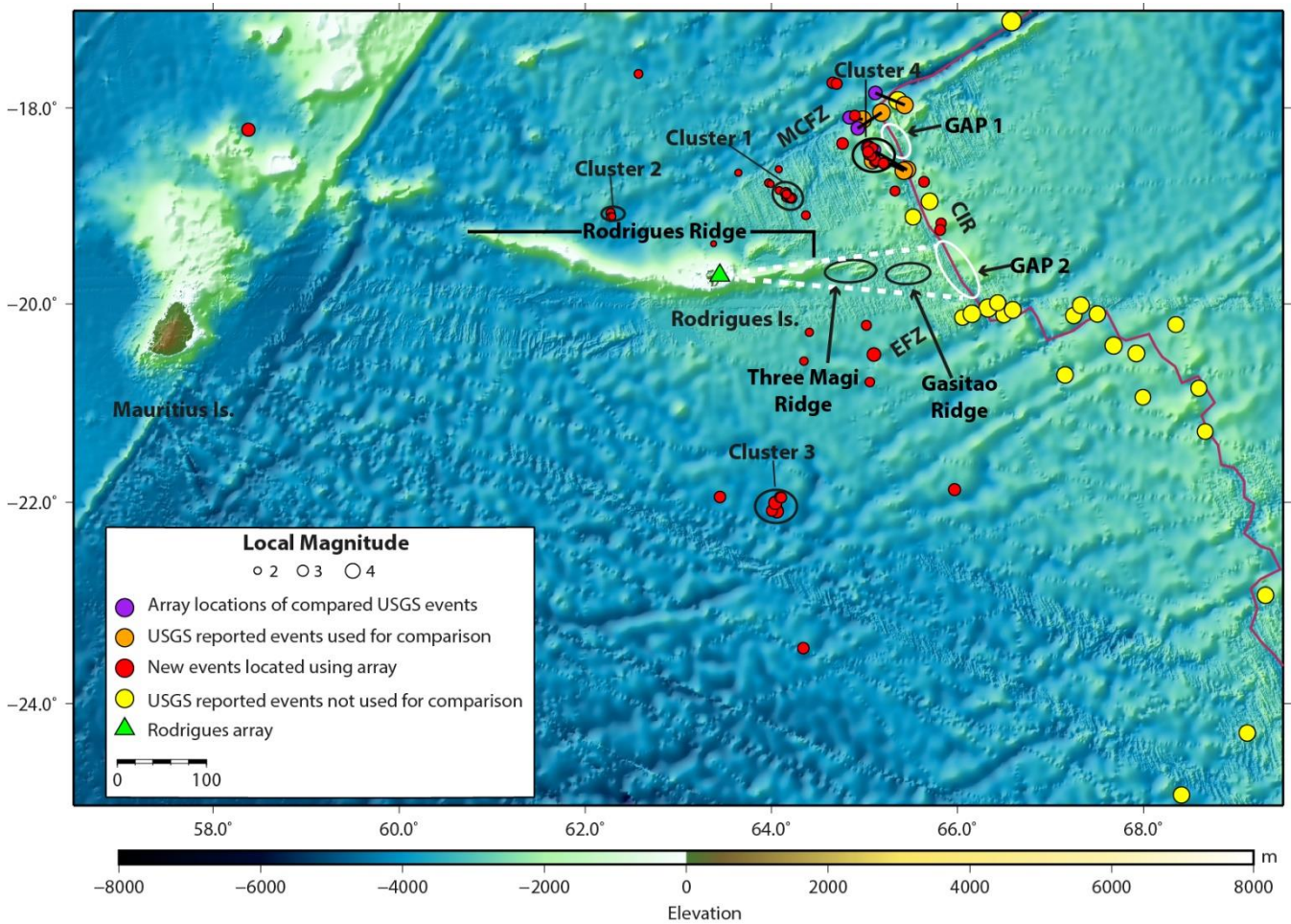
**Figure 7:** Estimating the epicentral distance from the arrival time difference between S- and P waves at the reference station 1. The vertical, North and East components are shown by traces 1, 2 and 3, respectively (upper panel). The vertical red lines panel show manually-picked P- and S-phases. The picking is aided by calculating the STA/LTA of the Z-component (lower panel).



**Figure 8:** Array analysis of an event of 14 February 2015 at 07:08:55h that occurred close to the CIR, east of Rodrigues Island, which is [as listed in the USGS database](#). (a) Vertical-component traces. (b) Zoom-in of the P-waveforms. (c) Beam energy as function of horizontal slowness components  $s_x$  and  $s_y$ . (d) Shifted traces and beam (red trace) corresponding to the maximum indicated in (c). The backazimuth of this event is determined at about 39° with an apparent velocity of 9.5 km/s.

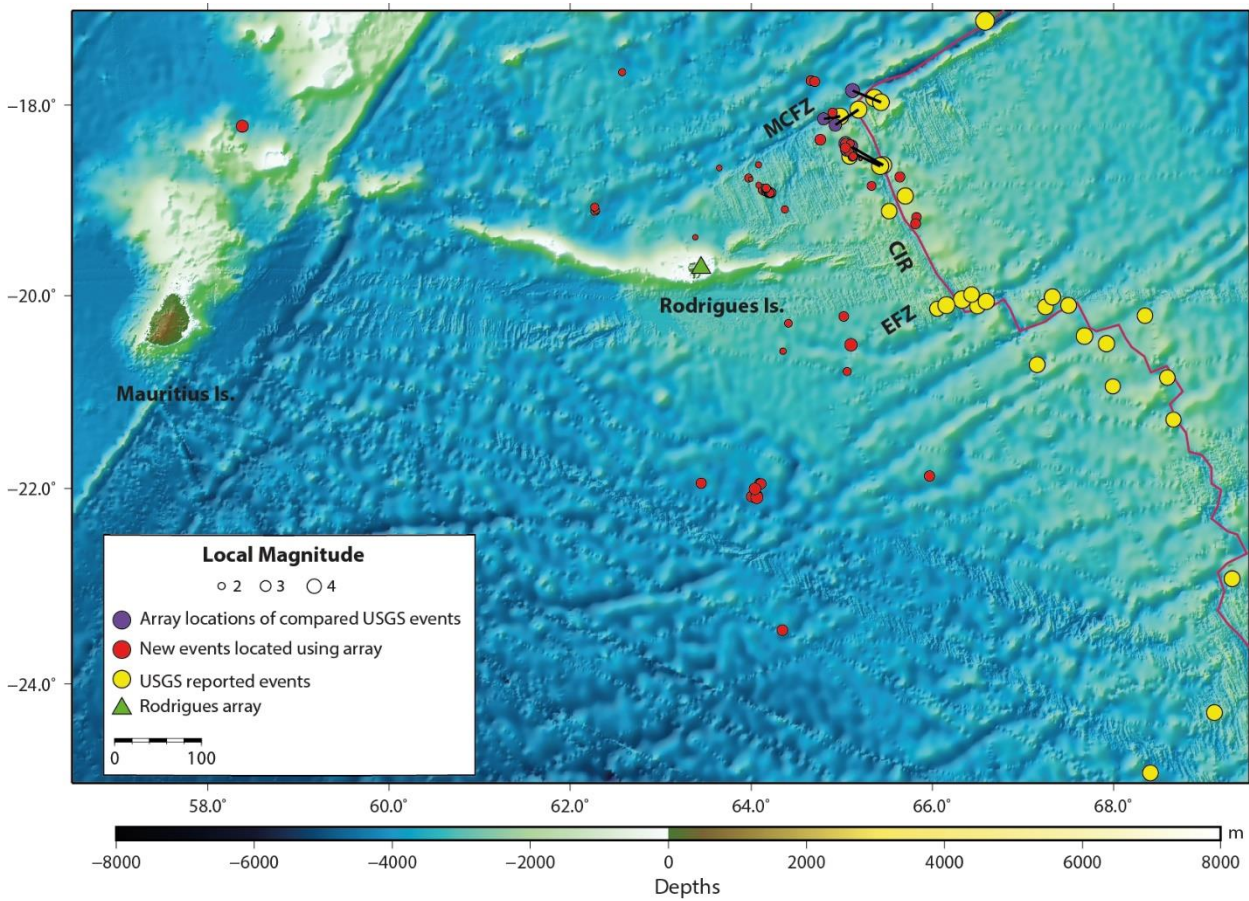




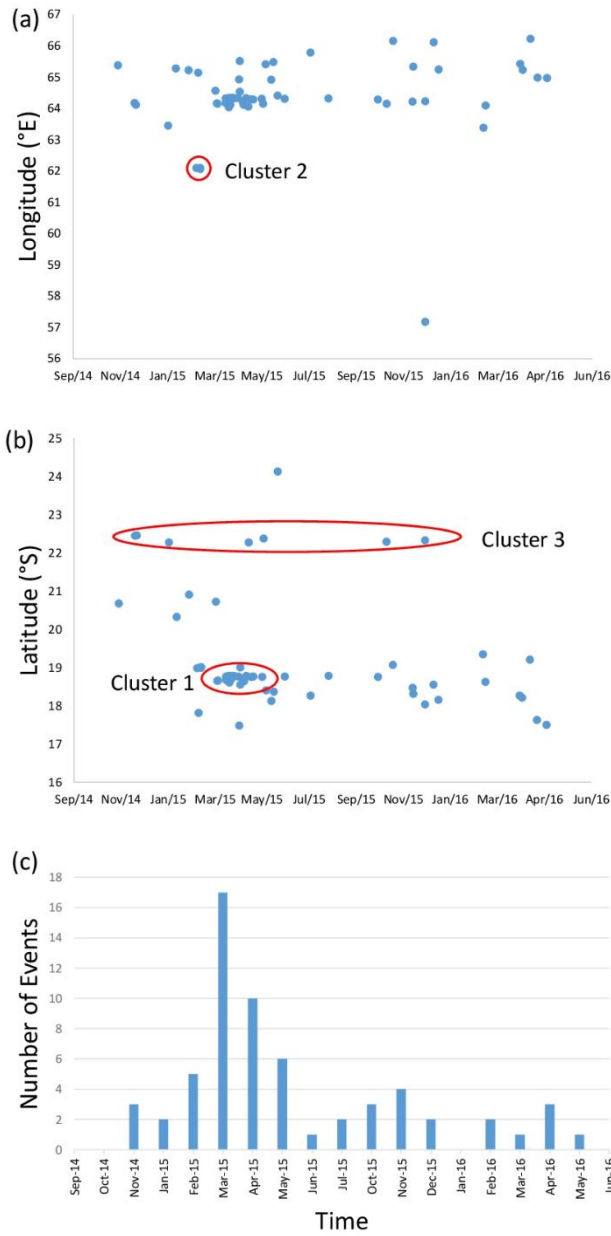


**Figure 8:** Event locations from the array analysis in comparison to those from the USGS database between September 2014 and June 2016. The black bars pair the respective events. Average and maximum separations between the locations for the same event are 17 and 32 km, respectively. For most of the events reported in the catalogue, no reliable location could be obtained using Rodrigues array (see section 3). MCFZ: Marie-Celeste fracture zone; EFZ: Egeria fracture zone.

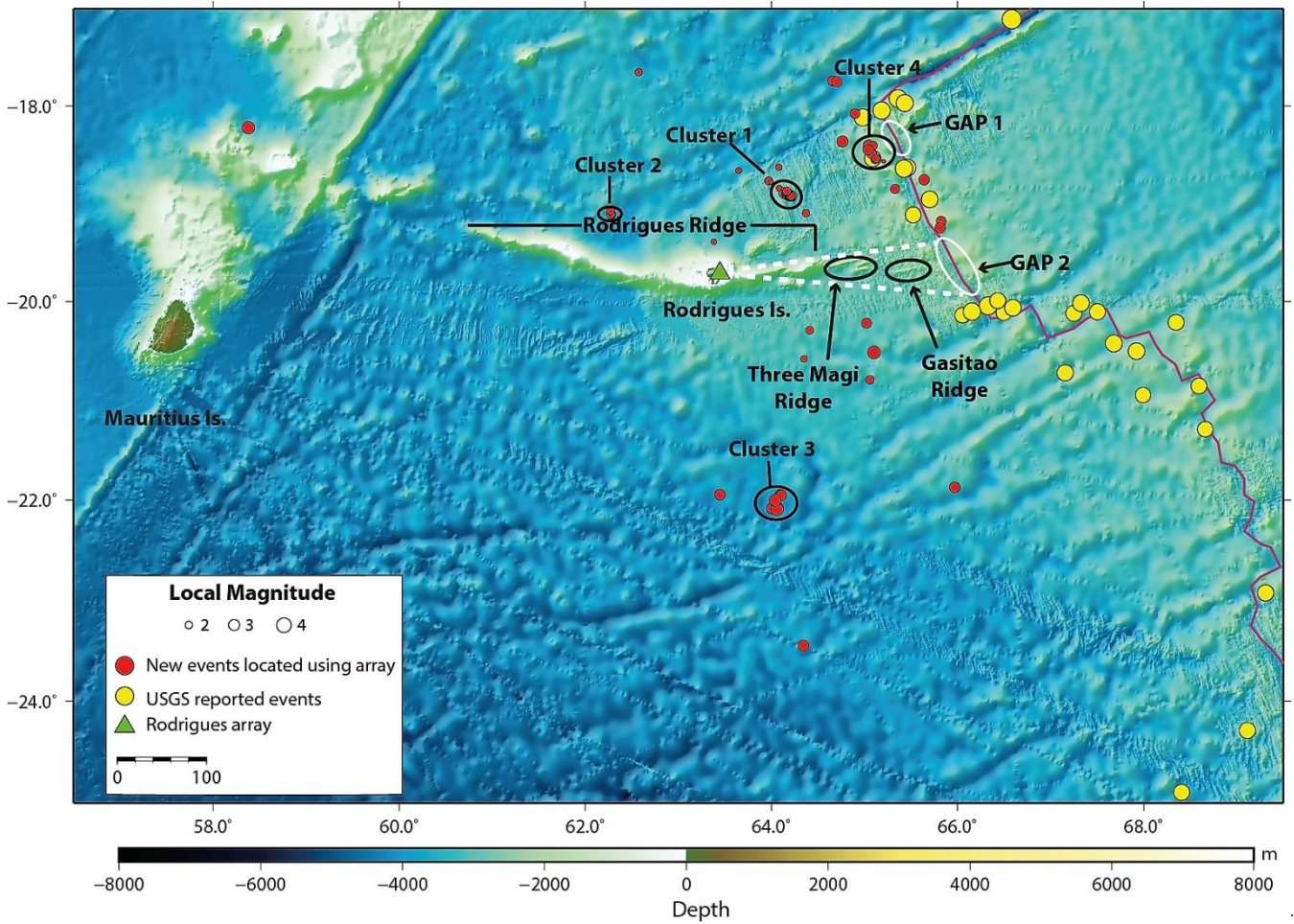
**Figure 98:** Locations of new events (and cluster) detected and located using array methods are shown by red circles. The purple circles represent event locations from the array analysis in comparison to the events (orange circles) from the USGS database between September 2014 and June 2016. The black bars pair the respective events. Yellow circles denote events from the USGS catalog for the same recording period that were not (clearly) detected at Rodrigues array and that were, therefore, not used for a comparison ~~from USGS catalog for the same duration as the deployment of Rodrigues array~~. The empty GAPS 1 and 2 have been demarcated by white ellipses. The white dashed line marks the possible region of partially molten material below the eastern extension of Rodrigues Ridge. CIR, Central Indian Ridge (red solid line); MCFZ, Marie-Celeste fracture zone and EFZ, Egeria fracture zone.



**Figure 9:** Locations of new events detected and located using array methods are shown by red circles whereas yellow circles denote events from USGS catalog for the same duration as the deployment of Rodrigues array. Purple circle represents event locations from the array analysis in comparison to those from the USGS database between September 2014 and June 2016. The black bars pair the respective events. CIR, Central Indian Ridge; MCFZ, Marie Celeste fracture zone and EFZ, Egeria fracture zone.



**Figure 10:** Variation in longitude (a) and latitude (b) of the events detected and located using Rodrigues array. Monthly distribution of the events is shown in (c). The red solid line in (b) marks the events for Cluster 1 (~120 km north-east of Rodrigues Island), Cluster 2 (~140 km north-west of Rodrigues Island), and Cluster 3 (~265 km south of Rodrigues Island), and Cluster 4 (~220 km north-east of Rodrigues Island).



**Figure 11:** Tectonic setting of Rodrigues-Central Indian Ridge (CIR) region. The ridge axis is shown by solid line (red). Event locations from USGS catalog (2000/01-2018/01) are shown by yellow circles whereas events located using Rodrigues array (2014/09-2016/06) are shown by red circles. The empty GAPS 1 and 2 have been demarcated by white ellipses. The white dash line marks the possible region of partial molten material below the eastern extension of Rodrigues Ridge.

**Table 1:** Events from USGS catalogue located using Rodrigues' array

Date,time (yymmdd, hh:mm:ss)	Lat. (°)	Lon. (°)	$M_L \pm SD$	Dist. $\pm SD$ (km)	BAZ (°)	BAZ error	
						Min (°)	Max (°)
141124,22:23:23	-18.404	65.043	3.78 $\pm$ 0.1	222.02 $\pm$ 3.23	49.39	46.73	53.87
150214,07:08:59	-18.100	64.837	3.45 $\pm$ 0.31	231.27 $\pm$ 5.01	39.48	35.55	44.06
150214,11:13:33	-18.210	64.927	3.27 $\pm$ 0.1	228.26 $\pm$ 2.22	43.27	38.67	45.00
160402,17:53:21	-18.432	65.108	3.44 $\pm$ 0.41	225.21 $\pm$ 5.66	51.14	46.73	54.60
160402,18:01:49	-18.472	65.057	3.34 $\pm$ 0.1	218.24 $\pm$ 3.89	51.14	47.64	55.61
160602,21:18:10	-17.846	65.118	3.57 $\pm$ 0.01	271.93 $\pm$ 5.75	40.61	36.13	43.27

**Table 2: Details of events from USGS catalogue for comparison**

Date,time (yymmdd, hh:mm:ss)	Lat. (°)	Lon. (°)	$m_b$	Dist. (km)	BAZ (°)
141124,22:23:19	-18.6335	65.4567	4.8	242.74	60.78
150214,07:08:55	-18.1178	64.9817	4.7	239.68	42.62
150214,11:13:29	-18.0478	65.1849	4.8	260.07	44.99
160402,17:53:18	-18.5407	65.0872	4.5	215.96	53.24
160402,18:01:45	-18.6435	65.4247	4.8	239.27	60.61
160602,21:18:07	-17.9694	65.4337	4.7	284.98	47.54