

Dear Referee #1,

in the following you will find our answers and/or description of changes we applied to our manuscript following your useful suggestions. In black are reported your questions or comments, in red our answers.

We start with a reply to the General Comments: you have well understood that this is the first of hopefully further steps of study.

*I find this paper really interesting and explores a really interesting geologic region with some question on the sources of anisotropy and flow related to the Alpine subduction. The authors measure SKS shear wave splitting for the AlpArray and conduct many different analyses and test different mantle flow hypotheses. The paper is written very well, and I enjoyed reading it. I think the data is very fascinating and has improved the understanding of the Alps. I like how the authors use the stacking misfit approach. I think this is a good tool to use in these studies. I also like that they compare their results to surface wave anisotropy and seismic tomography. I just think they could go a little further in a future study. I do have a few minor suggestions that I think would make the paper a little clearer to the reader.*

Specific Comments:

1. Compare SKS splitting results to recent flow models for this region, similar to what Venereau et al. (2019, G<sup>3</sup>) did in Alaska. I think the authors should add a figure comparing their results to a flow model and would be a nice visual to add to the text on possible flow scenarios. I did a quick literature search and found a few flow models.

*We accept the suggestion and **add a new Figure 8** with a final sketch and some references in the **Discussion paragraphs**. It is worth to note that most of previous flow scenarios already proposed are based over a smaller amount of measurements with respect to ours.*

2. Seems some of the stations have complex anisotropy such as the stations in Figure 6b and should be further analyzed in a future study. I recommend the authors use a special symbol (perhaps on Figure 6a?) for any station that may exhibit complexity since the average fast direction may not be a good representation of the dominant fast direction at those stations and should require future study.

*We agree that some stations have a more heterogeneous pattern of measurements. We underline it showing three examples in Figure 4d (stations A037A, A061A and A300A). We tried to differentiate the amount of heterogeneity in the anisotropy, computing average values with two methods and following the approach according to which a large heterogeneity is found when the difference between the average values is large. Unfortunately we did not find any particular results as you can see **from the maps here attached** (Fig.1-RV1: Map of average SKS directions computed using the circular average (yellow) and the one obtained by stacking misfit surfaces from individual SKS splitting solution (red); Fig.2-RV1: Maps of phi error given by misfit stacking (left) and R value obtained by circular mean computation, that varies from 0 to 1 corresponding to a maximum to minimum dispersion). So, we decided to postpone any further discussion about this point, that we will approach differently.*

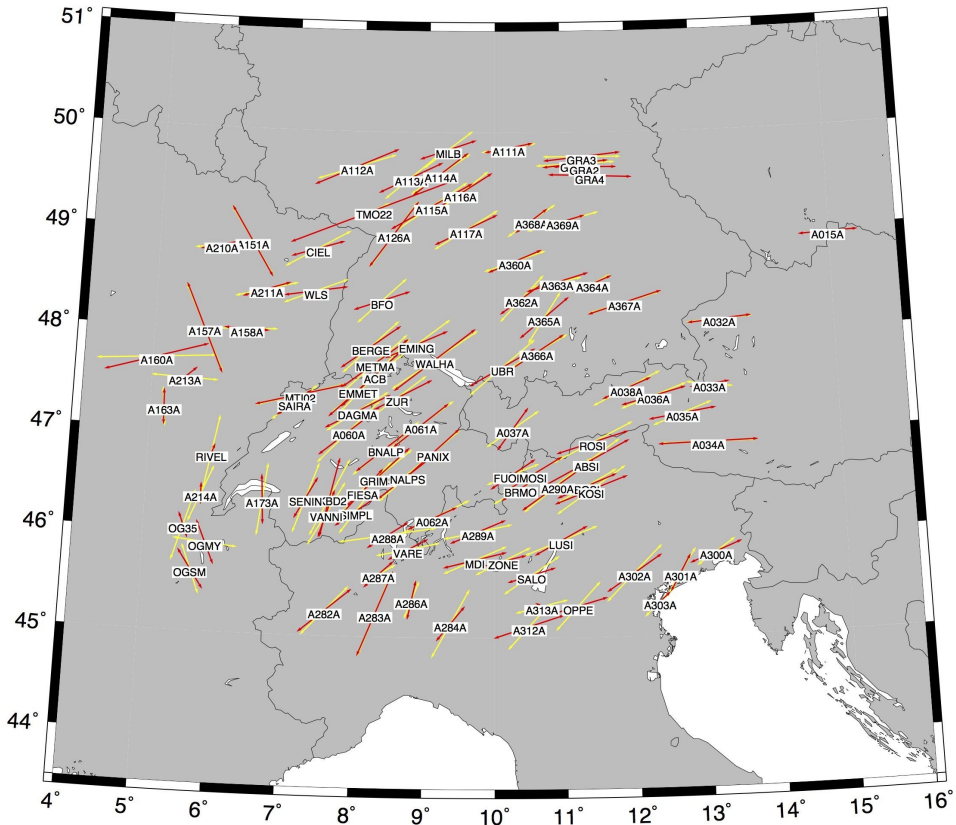


Figure 1-RV-1 -- Map of average SKS directions computed using the circular average (yellow) and the one obtained by stacking misfit surfaces from individual SKS splitting solution (red).

Station measurement heterogeneity based on different error estimates

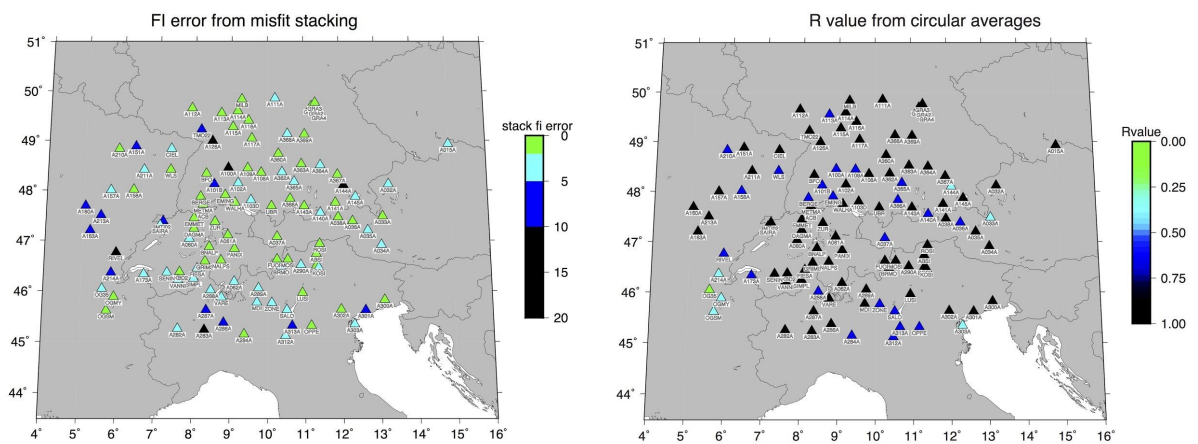


Figure 2-RV1 -- Maps of phi error given by misfit stacking (left) and R value obtained by circular mean computation (R varies from 0 to 1 corresponding to a maximum to minimum dispersion).

3. A general comment (not really suggesting any changes): In general, I find averaging fast directions to not be the most accurate determinant of the dominant fast direction. I think fitting the data to a 1-D upper mantle anisotropic model or making a correction to the observations are better options, since averaging can be affected by a sawtooth pattern (see Eakin et al., 2019, G<sup>3</sup>) and sample bias in event backazimuth. They can sometimes differ by 15 degrees based on my personal experience. However, I do not suggest the authors to make any changes in this aspect, just a thought. Taking an average at each station is pretty common, but I wonder if future shear wave splitting studies should consider some better techniques in finding the dominant fast direction.

We agree with the reviewer. We are indeed aware that anisotropy average values may mask a more complex (and interesting) distribution. However, the aim of this manuscript was a general view of the anisotropy distribution given by a huge amount of data and a very large studied region. So, a large scale image of the situation. By the way, as already stated in our previous answer, we here applied two different methods to compute average direction values, with the purpose to recognise and motivate differences (see Fig. 4 panel d). For the broad view, we decided to discuss the map of average values, but in future studies we will certainly focus on back azimuthal distributions that here is briefly represented in Figure 4c.

Technical Comments:

Line 138 – what are the azimuthal bins for the misfit stacking?

We use misfit stacking to obtain a single solution per station. Thus, we do not stack misfit surfaces in azimuthal bins. Instead, we stack results from all events recorded at a station. The final solution is equivalent to a joint linearization of all SKS phases recorded at the station. This stated at **lines 125-130**, in the **Method and Data paragraph**.

Line 145 – The clockwise implies the authors know the direction of rotation. The authors should maybe use the word “circular”, since we don’t know if flow is clockwise or counterclockwise.

Changed as suggested

Line 250 – This is also just a general comment. I don’t recommend any actual changes, just potential for a future study since it would be beyond the scope of this study. I am curious how well the surface wave anisotropy compares to the shear wave splitting when you model for 2 layers of anisotropy. The authors state there is little backazimuthal variation in Switzerland, but it’s difficult to rule out since it’s difficult to see the details in Figure 4. Why don’t the authors try this two-layer model on a couple of stations with a fast direction vs. back azimuth plot. This could be an interesting future study.

Yes, we are going in this direction, mainly with permanent stations (longer dataset available).

Our first attempt on the TUE MedNet station, which has been operational for more than a decade (located at the boundary between Swiss and Italy) did not show significant back azimuthal variation to justify a two-layered structure.

Line 256 – This should be an equation, not within the text. For example, it should be on a separate line and labeled, equation (1).

Changed as suggested

What is the period of choice? Since the authors use a bandpass. It might be good to show the width of the Fresnel zone for 3-25 seconds in Figure 6b, since this is the bandpass window the authors use.

Traditionally the typical period of SKS phases is around 10 s and we are interested in the kind of heterogeneities that can be sampled by this type of wave. For this reason we computed Fresnel zones at 10 s (as we already have done in previous papers, see Salimbeni et al., 2013, JGR). However, we looked at Fresnel zones for the corner frequencies of our filter, but we did not find them relevant enough to be discussed in the paper. This has been clarified **at lines 265-270**.

I am also confused by this paragraph. The authors assume the anisotropy is due to something deeper than 200km, but multiple layers or a dipping layer of anisotropy in the upper mantle could induce changes in fast direction. I do agree that station A037A could not be due to two layers, but it is possible for dipping layers. I think these two stations are interesting and the author should plot all of the data for these two stations. Is there any backazimuthal pattern at these two stations? I think it's fine to keep this Figure and this analysis in the paper, but I think the authors should say this requires further study and that there could be other causes that are not related to a deeper source.

For station A037 all data are already plotted in Fig. 4 panel d, but for completeness **we also included in Figure 6b the polar plots** for both stations for which Fresnel zones have been reported. Certainly the pattern is not simple, both are temporary stations and the back azimuthal coverage is insufficient to reliably provide an interpretation for multiple or dipping layered structures. However here shallower anisotropy measurements (Pn or surface wave azimuthal anisotropy, Figure 6a) show different results with respect to our prevailing anisotropy directions, consequently we attribute SKS anisotropy to a deeper possibly asthenospheric mantle origin. We are currently working on a second paper exploring more complex structures using data from permanent stations.

You could investigate the depth possibility by looking at SKKS or other XKS phases that have different inclination angles than SKS. I just think the authors should not jump to the immediate conclusion that the anisotropy is related to the deeper mantle without further analysis.

SKS-SKKS differences are mainly attributed to lowermost mantle structures, such as D" layer topography, which is at ~2800 km depth. In our paper, we only suggested that anisotropy should be deeper than 200 km. Nevertheless, a comparison with SKKS phases and inferences on the core-mantle boundary anisotropy would be a really interesting pursuit as well.

Figure Comments:

Figure 3 caption – a.iii and b.iii. (top) The description for this does not make sense. I don't understand what these three small figures are, and I think the authors should clarify in the caption. There is a description for these panels, but I am not sure which of the three the authors are talking about.

We modified **the caption and figure** to make it more explicit. **The new caption** now reads: ***"Time windows of the radial (black line) and tangential (dashed line) components showing the SKS phase before and after the correction."***

Figure 4 – Should add plate motion arrows to plot.

Added as suggested, in **Figure 7**.



It's really hard to see the SE purple fast directions – recommend a more contrasting color – maybe green?

Changed as suggested

Figure 7 – a and b are not labeled on the figure.

Changed the caption

Dear Referee #2,

in the following you will find our answers and/or description of changes we applied to our manuscript following your useful suggestions. In black are reported your questions or comments, in red our answers.

*The manuscript investigates the mantle anisotropy beneath the Alpine region with updated data set from the AlpArray stations. The new results provide comprehensive knowledge on the mantle flow in the study Region due to the interaction between the European and Adria plates. It is well organized, I have only minor comments.*

Vertical resolution is the problem of SKS splitting. The authors calculated the Fresnel zone and concluded strong anisotropy in the asthenosphere. It is useful. Another method is to make quantitative comparison between delay times and lithospheric thicknesses. If lithospheric anisotropy dominates, a strong positive correlation should be clear. Otherwise, asthenospheric anisotropy is required. In this case the delay times should be as accurate as possible, so the stacked averages are better because individual measurement usually overestimates the delay times.

In the **Discussion** section “Depth and source of SKS anisotropy in the Alpine region” to clarify we added the following paragraph (lines 280-290): **“A quick comparison between LAB depth variations in the Alpine region and delay times does not yield a clear correlation, which should also support a non-lithospheric source signal. Most S-receiver function based LAB estimates generally indicate LAB depths in the 90-140 km range beneath the Alps (Geissler et al., 2010; Miller and Agostinetti, 2012; Bianchi et al., 2014) decreasing to 80-100 km north of the European Front (Geissler et al., 2010). In contrast, Plomerova et al. (2010) infers lithospheric thicknesses of up to 230 km beneath the Alps and ~100 km north of the Front. LAB estimates thus vary between studies and the actual boundary remains elusive especially in on-slab locations, where slabs plunge almost vertically, but a large-scale decrease towards the north is a common feature. However, delay time variability (Figure 4a) does not mirror this large-scale decrease, providing further support for an asthenospheric source.”**

If the circular patterns of fast polarizations are result of subduction-driven mantle flow, since the subducting slab is steep here, how to explain similar fast orientations in the high (slab) and low velocity regions at 100 and 200 km depths.

In future developments of this work we'll certainly try to distinguish the more feasible location of the anisotropy we detect and also if a contribution from the slab can be ascertained. At present, tomographic images do not report a unique and coherent shape of the slab. Moreover, for the particular condition of the coexistence of Apennines, Alps and Dinaric slabs, mantle flow directions here may be similar above and below (in front and behind?) the Alpine slab and consequently difficult to be distinguished.

Alternatively, the dipping slab(s) and entrained asthenospheric mantle could explain part of the circular fast azimuths, if the lithospheric mantle is characterized by a dip-parallel foliation containing the a- and c-axes of olivine. This situation has been envisaged by Song and Kawakatsu, 2012, GRL, to explain the trench-parallel anisotropy along subduction zone forearcs. This is now cited in **section 5.4, lines 360-367.**

Line 124: Grid search method is used here. So it is necessary to clarify the steps for fast polarizations and delay time. A short description to the uncertainty estimation is also necessary.

We now modified the text **at lines 125-130** to include this information: **“Grid search parameters are 0.025 for  $\delta t$  and  $1^\circ$  for  $\varphi$ , and error calculations are based on the Silver and Chan (1991), under the assumption of Gaussian noise.”**

Line 135: Describe or show the reference for standard circular means.

Yes, we used the standard circular mean described in Davis J. C. (2002), Statistics and data analysis in geology - 3rd edition, Wiley ed. We add the reference.

Line 194: 1.0 - 2.0 s

Changed as suggested

Line 254: I think Figure 6 is missing. So I cannot check it.

Unfortunately, this is true. In our first submission in fact we missed figure 6. We then uploaded a correct manuscript, but we do not know why you probably received our first version. Hope you can check now in this revised version. We apologize for this.

Figure 2: Label the epicentral distances in the inset. The study region does not seem to be in the center.

Inset figure modified as suggested.

Figure 4d: Label the stations in the map above.

Labels added.

Figure 5: In the map view, there are many NE-SW fast orientations around (6E, 46N), but they are invisible in profile D. Why?

Coloured squares are station measurements, not individual event SKS measurements. However, in profile D, at ~200 km distance, roughly corresponding to the 6E,46N location, coloured squares indicate a large scatter in the fi direction, as expected.

Figure 7: Here are comparison of seismic tomography at 100 and 200 km depths with seismic anisotropy at stations. Maybe you can try to project the SKS splitting to 100&200 km depths and calculate the regional averages respectively.

100 & 200 km piercing point maps are really similar to the 150 km we decided to use. The position of a measurement at the piercing point at 100 km or 150 km differs by about 12 km. This means that different maps at different depths of the piercing points would show substantially the same pattern at the scale we are working in this paper.

Concerning the computation of the regional average directions computed from the measurements at piercing points, we chose to provide a sketch of the possible mantle flow patterns (see **Figure 8**) which we considered significant and helpful based on the average values at stations. However, for other aims, we are also working on what you are proposing, see the abstract EGU2020-13880, “Surface and deep deformation of the great Alpine region from GNSS and seismic anisotropy measurements” by Simone Salimbeni et al.

Dear Referee #3,

in the following you will find our answers and/or description of changes we applied to our manuscript following your useful suggestions. In black are reported your questions or comments, in red our answers.

*This paper is well organized and well written. I recommend publication with only minor revisions.*

1) The introduction section needs more information about anisotropy. There should be some mention of anisotropic fabrics especially when there is later discussion of lithospheric (A-type) versus asthenospheric (C- and E-type) anisotropy. a. I don't know how applicable this is in the Alps, but it seems like some of the invoked mantle flow is where the wedge would traditionally be located. So B-type fabric may also be worth mentioning.

In this manuscript we started with the idea to give a general view of the study region, where uncertainties on the slab shape, dimensions and positions are still debated. We would work on possible X-type of anisotropy using further results after we clarify some doubts about the slab geometries. In the Introduction we mainly describe the geodynamic information we use in the discussion.

We mention the common assumption of A-type olivine fabrics to interpret the observations and briefly discuss the role of other olivine fabrics in **5.4 paragraph**.

2) Did the authors examine different frequency bands for splitting?

No, we did not.

0.3 Hz seems on the high end. a. How does this frequency band compare to the previous studies of splitting in the region?

It is not uncommon to use this corner frequency. Other SKS studies use a similar filter bandwidth of 0.04-0.3 Hz (e.g. Darbyshire et al., 2015, Lidell et al., 2017, Venereau et al., 2019) or an even higher corner frequency: 0.09–0.35 Hz (Eakin et al., 2015). In the Alpine region, some authors did not apply any filtering (Bokelman et al., 2013, Qorbani et al., 2015), while others used 0.02-1 Hz (Wustefeld et al., 2007), 0.02-0.2 Hz (Barruol et al., 2011; Salimbeni et al., 2018) or a range of bandpass filters between 2–10s, 5–20s and 10–50 s (Walther et al., 2013). To clarify, we added more information about our choice at **lines 140-145**.

b. Might some of the variability in splitting be coming from the Alpine crust since high frequencies are being included?

The expected crustal contribution to the SKS signal is incomparably smaller than our estimated dt values. In the manuscript we mentioned that estimated delay times associated with the crust range between 0.1-0.3 s (Silver, 1996) or 0.1-0.5 s (Barruol and Mainprice, 1993) while our average delay time is 1.4 s, requiring a mantle contribution.

3) In the Methods or Results sections, please include error information such as maximum allowable and average errors in phi and dt.

We added the following information in the **Method section at lines 126-130**: "**We allow measurements where the SKS phase is clear, the particle motion is successfully**

*linearized, and the misfit surface minimises around one  $\delta t$ - $\varphi$  solution pair. The majority of allowed individual measurements have  $\varphi$  errors less than  $20^\circ$  (81% of our results, while 19% are between  $20^\circ$  and  $40^\circ$ ) and  $\delta t$  errors less than 1 s. After misfit stacking, errors decrease significantly, with single station measurement errors averaging to 2.00 for  $\varphi$  and 0.025 s for  $\delta t$*

4) Did you use Splitlab? SplitRacer? Sheba? Or your own splitting program?

We now modified the text to include this information. In the second paragraph **at lines 124-125**, the text now reads: *“To determine the  $\varphi$  and  $dt$  parameters [...] by minimizing the energy on the tangential component, as implemented in the Sheba software (Wüstefeld et al, 2010).”*

5) How well do the null orientations agree with the splitting directions in each region?

In the **Results section, lines 175-179**, we added : *“These directions are similar to the estimated anisotropy fast axes throughout the region (Figure 4a). This is expected since SKS waves polarized in the direction of anisotropy should not exhibit splitting.”*

a. The nulls in the NW alps obviously don't have a lot of splits at those stations, but is that telling of downwelling?

In our opinion, the lower amount of null measurements in NW Alps (Swiss to be more precise) may be due to the fact that cross checking prevailing back azimuth directions (plot bottom right in Figure 4b) and prevailing directions of splitting anisotropy here, it is quite low the probability to have null measurements.

In addition, previous geophysical studies for this region did not refer of any downwelling. A low amount of nulls is a weak support for this hypothesis, mainly if it is highly possible the cause previously described.

6) Did the authors try modeling splitting with layered anisotropy in the NW Alps where single station splitting variability is high?

We are going in this direction, mainly with permanent stations (longer dataset available). Our first attempt on TUE MedNet station (located at the boundary between Swiss and Italy) was not very satisfactory. The back azimuthal variation probably is not due to a two layers structure, but we have still a lot of data to analyse with this purpose.

7) In figure 4c, I think it would help to show the null pierce points as well a. That might be what the red dots are, in which case that should be in the caption.

Red dots are the stations (information lacking in the caption and now added). We tried to do what you suggest, but having so many measurements, plotting also nulls makes a map hardly readable. For this reason we decided to show them separately.



# **Mantle flow below the central and greater Alpine region: insights from SKS anisotropy analysis at AlpArray and permanent stations**

Laura Petrescu<sup>1,2</sup>, Silvia Pondrelli<sup>1</sup>, Simone Salimbeni<sup>1</sup>, Manuele Faccenda<sup>3</sup> and AlpArray Working Group\*

5 <sup>1</sup>Istituto Nazionale di Geofisica e Vulcanologia, Bologna, Italy; <sup>2</sup>National Institute for Earth Physics, Bucharest, Romania; <sup>3</sup>University of Padua, Department of Geoscience, Padua, Italy; \*For further information regarding the team, please visit the link which appears at the end of the paper.

*Correspondence to:* Silvia Pondrelli (silvia.pondrelli@ingv.it)

**Abstract.** The Alpine chain in western and central Europe is a complex orogen developed as a result of the African-Adriatic plate convergence towards the European continent and the closure of several Tethys oceanic branches. Seismic tomography studies detected high-wavespeed slabs plunging beneath the orogen to variable depths and a potential change in subduction polarity beneath the Central Alps. Alpine subduction is expected to leave a significant imprint on the surrounding mantle fabrics, although deformation associated with the Hercynian Orogeny which affected Europe prior to the collision with Adria may have also been preserved in the European lithosphere. Here we estimate SKS anisotropy beneath the central and greater Alpine region at 113 broadband seismic stations from the AlpArray experiment as well as permanent networks from Italy, Switzerland, Austria, Germany, and France. We compare the new improved dataset with previous studies of anisotropy, mantle tomography, lithospheric thickness, and absolute plate motion, and carry out Fresnel analysis to place constraints on the depth and origin of anisotropy. Most SKS directions parallel the orogen strike and the orientation of the Alpine slabs, rotating clockwise from west to east along the chain, from  $-45^\circ$  to  $90^\circ$  over a  $\sim 700$  km distance. No significant changes are recorded in Central Alps at the location of the putative switch in subduction polarity, although a change in direction variability suggests simple asthenospheric flow or coupled deformation in the Central Swiss Alps transitions into more complex structures beneath the Eastern Alps. SKS fast axes follow the trend of high seismic anomalies across the Alpine Front, far from the present-day boundary, suggesting slabs act as flow-barriers to the ambient mantle surrounding them for hundreds of km. Further north across the foreland, SKS fast axes parallel Hercynian geological structures and are orthogonal to the Rhine Graben and crustal extension. However, large splitting delay times ( $>1.4$ s) are incompatible with a purely lithospheric contribution, but rather represent asthenospheric flow not related to past deformational events. West of the Rhine Graben, in northeastern France, anisotropy directions are spatially variable in the proximity of a strong positive seismic anomaly in the upper mantle, perhaps perturbing the flow-field guided by the nearby Alpine slabs.

## 1 Introduction

The Alpine tectonic region is a complex orogenic system formed as a result of the interaction between Africa and Europe throughout the Cenozoic era. The northward convergence of Adria led to the closure of several Tethys oceanic branches generating the arcuate Alpine-Dinaride-Carpathian orogenic system and the circum-Alpine rifts in Central and Western Europe (Figure 1, Schmid et al., 2004; Handy et al., 2010). While several geologic and geophysical studies suggest that Adria is the upper plate beneath the Western and Central Alps (the latter considered here to include Switzerland, westernmost Austria and Northern Italy), the origin of the eastern Alpine slab is the subject of ongoing debate. Several tomography studies show seismically fast subducted bodies down to 250-300 km beneath the Alps (e.g. Lippitsch et al., 2003; Piromallo and Morelli, 2003; Giacomuzzi et al., 2011; Zhu et al., 2015; Zhao et al., 2016), but their geometry, extent and orientation remain controversial (e.g. Lippitsch et al., 2003; Mitterbauer et al., 2011; Piromallo and Faccenna, 2004), with some studies further suggesting that the subduction direction changes polarity beneath the Central to Eastern Alps (e.g. Lippitsch et al., 2003; Schmid et al., 2004; Handy et al., 2015).

The collision between Adria and Europe is thought to have caused orogen-parallel asthenospheric flow (Barruol et al., 2011; Bokelmann et al., 2013; Salimbeni et al., 2018) and extrusion of the Eastern Alps towards the Pannonian Basin (Kummerow et al., 2006; Bokelmann et al., 2013). In the Eastern Alps, Qorbani et al. (2015) also suggested that mantle flows above a deeper detached slab. Anisotropy studies in the Mediterranean suggested toroidal flow is likely induced by subducting and/or retreating slabs (e.g. Civello and Margheriti, 2004; Lucente et al., 2006; Baccheschi et al., 2007; Salimbeni et al., 2008; Buontempo et al., 2008; Diaz et al., 2010) and that trench-normal directions in the back-arc side may reorient to trench-parallel on the other side of the slab (Margheriti et al., 2003). While stations located in the high-topography Western Alps are likely in correspondence of a forearc setting (Barruol et al., 2011), the uncertain origin and extent of the slab in the Eastern Alps (Lippitsch et al., 2003; Piromallo and Faccenna, 2004; Mitterbauer et al., 2011; Zhao et al., 2016) may place the stations in a hinterland setting, changing the way mantle flow can be interpreted with respect to the plunging Alpine slab. North of the Alpine Front, the European lithosphere which has been shaped by pre-Alpine Hercynian orogeny, experienced lithospheric thermal thinning due to Cenozoic rifting and possible mantle plume activity (e.g. Goes et al., 1999; Dèzes et al., 2004). It is thus uncertain how far north and northwest collision-related asthenospheric flow may be extrapolated below the European foreland. Significant debate exists concerning the nature of the observed seismic anisotropy, with interpretations ranging from frozen-in pre-Hercynian paleo-subduction systems (Babůska and Plomerová, 2001), lithospheric deformation imprinted by the opening of the Rhine Graben (Walther et al., 2013), to a combination of basal drag due to plate motion and lithosphere-asthenosphere boundary topography influencing the mantle flow beneath (Bormann et al., 1996). With the advent of the AlpArray project (Hetényi et al., 2018), seismic station density significantly increased in Europe, providing an unparalleled wealth of seismic data and excellent opportunity to probe the continental interior in the greater Alpine tectonic area. To help determine the past and present plate deformation and place constraints on the geodynamic controversies concerning slab geometries and the extent of collision-related asthenospheric flow, we determine upper mantle seismic anisotropy using SKS splitting analysis at both permanent and AlpArray seismic stations located across the Po Basin, the Central and Eastern Alps, the Rhine Graben, and the Molasse Basin (Figure 2). SKS are core-refracted shear waves radiated by distant earthquakes that split in the presence of anisotropy, generally associated with strain-induced mineral alignment in the lithosphere and asthenosphere (Savage, 1999; Fouch and Rondenay, 2006; Long and Becker, 2010). SKS analysis thus yields direct observations of azimuthal anisotropy in the upper mantle, offering the possibility to passively probe the deformation of continents and mantle geodynamics (Silver, 1996). The broad and uniform coverage of the new AlpArray network allows mapping the anisotropy with unprecedented density, providing fundamental insights on the distribution of deformation in the upper mantle.

## **2 Tectonic and geodynamic setting**

The geological history of the Alps and the Mediterranean includes the sequential opening and closure of multiple Tethys and neo-Tethys oceanic branches throughout the Mesozoic, whose remnants were obducted on the southern margin of Europe

75 (Figure 1). After the collision between Adria and Europe started 35 Ma ago, the Adria indenter fuelled by the continued northward push of Africa rotated counter-clockwise with respect to Europe, thrusting over Europe (Coward and Dietrich, 1989, Froitzheim et al., 2008; Handy et al., 2010). Slab break-off was initiated, although time estimates vary between studies: 35–25 Ma (e.g. Piromallo and Faccenna, 2004) to 32–30 Ma (Sinclair, 1997) and may have migrated laterally, beneath the Eastern Alps and further into the Carpathians before 20 Ma (Ustaszewski et al., 2008) .

80 Geographically, the Alps comprise the Eastern Alps, lithologically linked to the Adria passive continental margin, and the Western Alps, comprising European terrains and ophiolite-bearing nappes. The Southern Alps, the northern continental margin of Adria unaffected by Alpine metamorphism, are separated from the Central and Eastern Alps by the EW oriented Insubric Fault, marking the suture between Adria and Europe, and the Periadriatic Fault (Figure 1) which accommodated shortening between Adria and Europe and post-collisional orogen-parallel extension (e.g. Schmid et al., 1989; Rosenberg et al., 2015). In this paper, we refer to the Central Alps as the approximate region comprising the limit between the Western and Eastern Alps in Switzerland, west Austria and Northern Italy (Figure 1). Two major syn-orogenic basins flank the north and south of the Alpine orogen: the northern Molasse Basin, a typical foreland sedimentary basin, and the Po Basin to the south, also a foreland basin for the Apennines (Allen et al., 1986). To the north of the Alpine chain, the European foreland comprises terranes assembled during the pre-Alpine Hercynian Orogeny (280-380 Ma) along the EW trending

85 Saxothuringian-Moldanubian suture zone (Figure 1). The interaction between Africa and Eurasia caused the development of a synorogenic intra-continental foreland rift system which cross-cuts Hercynian paleo-boundaries (Ziegler, 1992). This system includes the Rhine Graben, an Eocene-Oligocene passive rift that may have been generated along preexisting planes of weakness in response to the Alpine and Pyrenean collisional phases (Schumacher, 2002; Dèzes et al., 2004). During the Miocene, the European foreland lithosphere suffered thermal weakening due to the activation of a mantle plume system

90 beneath western and central Europe, coeval with the Northeast Atlantic plumes (e.g. Goes et al., 1999; Ritter et al., 2001). Tomographic images of the upper mantle structure beneath the Alpine region generally show slow seismic anomalies beneath part of the Western Alps (WA), the Molasse Basin (MB), and the eastern Po Basin. Fast seismic anomalies generally associated with the Alpine slab (Figure 1) are present beneath the western Po Basin, the Southern Alps (SA), and the Eastern Alps (EA) (e.g. Lippitsch et al., 2003; Piromallo and Morelli, 2003; Giacomuzzi et al., 2011; Zhu et al., 2015; Zhao et al.,

100 2016). The outline and internal properties of these anomalies are variable between studies, casting doubt on their lateral and depth extent, dipping direction or even whether they are continuous beneath the Alps. Although the general consensus regards the fast anomaly beneath the Western Alps as a south-southeastward subducted oceanic margin of Europe, the eastern segment may dip slightly towards the north and may be attached to Adria (Lippitsch et al., 2003; Handy et al., 2015). Furthermore, while the high seismic wavespeed Alpine “root” is present down to 250-300 km depth, at least beneath the

105 Western Alps (Piromallo and Faccenna, 2004, Zhao et al., 2016), a deeper slab, possibly the remnant Alpine Tethys (Figure 1), extends down to the bottom of the transition zone beneath the Eastern Alps (Piromallo and Faccenna, 2004; Mitterbauer et al., 2011).

### 3 Methods and data

SKS waves are excellent tools to study the anisotropy of the upper mantle beneath individual stations (e.g. Savage, 1999; Long et al., 2017). They are S waves excited by distant earthquakes that refracted through the Earth's outer core as P waves and re-converted to S waves upon entering the mantle. When entering an anisotropic medium, SKS splits into two orthogonally polarized waves that propagate at different speeds. The direction of the fast wave,  $\phi$ , is generally parallel to the azimuthal anisotropy axis and the time delay,  $\delta t$ , can suggest the depth and/or strength of the anisotropy. Since anisotropy is thought to be weak in the lower mantle (Niu and Perez, 2004) and in the transition zone (e.g. Tommasi et al., 2004), SKS waves are generally associated with upper mantle anisotropy, thought to be induced by the alignment of olivine crystals in the maximum strain direction (Ribe, 1989; Savage, 1999; Mainprice et al., 2000).

When SKS splitting occurs, energy is present on both radial and tangential components of the seismogram, resulting in an elliptical particle motion (Figure 3). If no energy is present on the tangential, the particle motion is linear and the SKS splitting measurement is declared null (e.g. Wüstefeld and Bokelmann, 2007; Long and Silver, 2009). Several situations can result in a null SKS split, the presence of multiple anisotropic layers whose combined signal destructively interferes (e.g. Barruol and Hoffmann, 1999) or the azimuth of the incoming SKS wave corresponds to the anisotropy orientation or to a direction perpendicular to it. To determine the  $\phi$  and  $\delta t$  parameters, we rotated the horizontal seismogram components in the great circle arc reference frame and linearised the particle motion in the window encompassing the SKS arrival (Figure 3), by minimizing the energy on the tangential component, **as implemented in the Sheba software (Wüstefeld et al, 2010).**

**Grid search parameters are 0.025 for  $\delta t$  and 1° for  $\phi$ , and error calculations are based on the Silver and Chan (1991), under the assumption of Gaussian noise. We allow measurements where the SKS phase is clear, the particle motion is successfully linearized, and the misfit surface minimises around one  $\delta t$ - $\phi$  solution pair. The majority of allowed individual measurements have  $\phi$  errors less than 20° (81% of our results, while 19% are between 20° and 40°) and  $\delta t$  errors less than 1 s. After misfit stacking, errors decrease significantly, with single station measurement errors averaging to 2.0° for  $\phi$  and 0.025 s for  $\delta t$ .** To avoid spurious results potentially introduced by lower mantle anomalies (Restivo and Helffrich, 2006), we only kept measurements where the difference between the source polarization of the SKS phase and its back-azimuth was found less than 20°.

We used data from 113 permanent and temporary seismic stations, including 65 stations from the temporary AlpArray network (Hetenyi et al., 2018), operational since 2015, and 48 stations from multiple permanent networks (Figure 2): 6 stations from Province Sudtirol Network (SI), 6 Italian National Seismic Network stations (IV), 20 Swiss Seismological Network stations (CH), 8 German Regional Seismic Network stations (GR) and 8 French National Seismic Network stations (FR). We selected 542 earthquakes that occurred between 2015 and 2019, with magnitudes  $M_w > 5.8$  and epicentral distances in the range of 85°-130°, recorded at 113 broadband seismic stations (Figure 2). **Before the manual selection for further analysis, data were filtered with a zero-phase Butterworth bandpass filter between 0.04 Hz and 0.3 Hz, a common corner frequency in this kind of analysis. Other SKS studies use a similar filter bandwidth (e.g. Darbyshire**



et al., 2015; Lidell et al., 2017; Venereau et al., 2019) or an even higher corner frequency, i.e. 0.09–0.35 Hz (Eakin et al., 2015). In the Alpine region, some authors did not apply any filtering (Bokelman et al., 2013; Qorbani et al., 2015), while others used 0.02–1 Hz (Wustefeld and Bokelman, 2007), 0.02–0.2 Hz (Barruol et al., 2011; Salimbeni et al., 2018) or a range of bandpass filters between 2–10s, 5–20s and 10–50 s depending on the available data.

145 After initial inspection of raw three-component seismograms and post-analysis splitting quality control, we obtained between 3 and 35 viable solutions per station, including null measurements (see Tables 1SM and 2SM, in Supplementary Material). Average SKS directions were computed using the standard circular mean of fast axis back-azimuth angles (Davis, 2002) and average delay time using standard linear mean. However, since this technique may not work well in cases when single-station circular distributions are too scattered, we also carry out misfit surface stacking from individual non-null SKS  
150 splitting solutions, weighted by their signal to noise ratio (Restivo and Hellfrich 1999). Since high back-azimuthal variations may yield high differences between the two averages (see Table 3SM, in Supplementary Material), we compare them to assess single-station measurements heterogeneity (Figure 3).

#### 4 Results

In Figure 4 all measurements are shown (see Supplementary Material, Table 1SM and 2SM). Most of the SKS fast axes  
155 follow a general NE-SW trend, especially those located in the higher Alpine elevation region (Figure 4a). In the Western Alps and north of the Alpine Front (within the Molasse Basin) some N-S directions are also recorded. In the Southern Alps and Eastern Alps, anisotropy measurements progressively orient along an E-W direction, following a large-scale clockwise rotation of the fast axes along the chain. North of the Alpine Front, the Rhine Graben marks the transition between two different data distributions: the NE-SW observations in Germany change to a E-W average on the western side, in France.  
160 Here, measurements are more spatially heterogeneous: neighbouring stations record  $\phi$  axes almost 90° different (Figure 4a). South of the Alpine Chain, in the Po Basin, SKS directions differ between west and east: fast axes display dominantly N-S orientations in the western part of the basin, where the doubly-verging Adriatic slabs meet the European slab. East of ~10° longitude,  $\phi$  directions become more scattered around the main NE-SW direction and tend to parallel the present-day plate boundary (Figure 1). Delay time distributions do not have a particular pattern: higher values are located in the French part of  
165 the Western Alps and in South Germany but also in the transition between Western-Central Alps and the Po Basin. Local areas with  $dt$  lower than 2 s are present in Central Germany at the Moldanubian-Saxothuringian transition and part of the Po Basin.

Null measurements provide additional valuable information on the nature and distribution of anisotropy beneath the Alps. Figure 4b shows the percentage value from the total number of viable SKS measurements at each station, as well as the  
170 direction of the incoming null SKS waves and their back-azimuthal coverage. Generally, stations with a small percentage of null measurements also yielded a large number of high-quality results and are mostly located in the Western Alps, Central Alps in their upper front, and the eastern Po Basin. Stations with a higher null percentage (between 50 to 100%) are located

in northern Switzerland (southwestern Molasse Basin) and in Central Germany, at the Moldanubian-Saxothuringian contact. At lower latitude (south and southeast of the Alpine Front) the amount of nulls decreases to lower than 50%. **The Alpine Front also marks a change in the dominant direction of the un-split SKS waves coming from the SW and NE in the northern region and dominantly NW south of the Front. These directions are similar to the estimated anisotropy fast axes throughout the region (Figure 4a). This is expected since SKS waves polarized in the direction of anisotropy should not exhibit splitting. Events coming from N or E generally yield less null measurements (Figure 4b inset).**

Distributions of  $\phi$  directions with respect to the back-azimuth of their corresponding earthquake also reveal a few emerging patterns across the region (Figure 4c). Most teleseismic events come from the SW and NE quadrants, yielding the most high-quality results in the western and central part of the study region. Projecting SKS fast axes at their 150 km piercing point depth would be expected to offset contrasting directions, if anisotropy was distributed laterally. However, in the French part of the Western Alps and west of the Rhine Graben, large single-station  $\phi$  variations belong to events coming from the same quadrant. In the Central Alps and part of Central Germany, directions are more laterally coherent, closely following the NE-SW trend, irrespective of the event back-azimuth. The N-S  $\phi$  distribution is a secondary trend emerging in the Molasse Basin and is yielded by events coming from the SW (Figure 4c). A smaller subset of SE and NW events are better recorded in the Eastern Alps but yield scattered  $\phi$  directions, including NE-SW, E-W, and NW-SE.

To better visualise the distribution of fast axes with respect to the event back-azimuth for stations located in different geographical positions, we plot examples of three representative high-quality station data (Figure 4d). Station A061A, located in the Central Swiss Alps, yields a homogeneous  $\phi$  distribution over the entire event back-azimuthal range, resulting in a small difference between the average circular value and the value obtained by misfit surface stacking (Figure 4d). Station A037A is located at the transition between the Central and the Eastern Alps, in western Austria and yields a bimodal  $\phi$  distribution along a dominant NE-SW axis and a secondary E-W direction. In this case a more evident difference in the mean values indicates a greater dispersion in the results. Station A300A, representative for the eastern Po Basin, yields high-quality measurements from events in the 45–100° and 250–310° back-azimuthal range, with the most frequent  $\phi$  along NE-SW. The average value calculated from circular statistics is different from that calculated with the stacking procedure, supporting an emerging trend of anisotropy heterogeneity towards the eastern part of the network.

Trends visualised in maps are even more evident in sections. Results from this study are averaged along with measurements from previous studies in 50 km by 50 km, along- and off-plane distances, respectively. Variations of splitting parameters in the section quasi-parallel to the Alpine Chain confirm the large-scale clockwise rotation of  $\phi$  axes from west to east, from -45° to 90° over a ~700 km distance (Figure 5, section D). Sections perpendicular to the Alpine Chain indicate more variability in  $\phi$  and  $dt$ . Section A crosses the Alps from SE to NW, starting from the northern termination of the Apennines, where  $\phi$  directions are ~ -30° and  $dt$  ranges between 1-2.5s. Across the western Po Basin two distinct distributions emerge, yielding a similar mean  $\phi$  value to the Apennines and variable  $dt$  values. In the Southern and Central Alps, separated by the Insubric Fault (Figure 1),  $\phi$  directions are more homogenous, following the main NE-SW direction and  $dt$  is between 0.5-1.5

s. Across the European-Alpine Front and the Molasse Basin,  $\phi$  axes rotate from  $\sim 50^\circ$  to  $\sim 30^\circ$  and  $dt$  increases above 1.5 s. Stations in the Jura Mountains have more dispersed  $\phi$  values averaging around  $45^\circ$  and  $dt$  between **1.0-2.0** s and measurements become strongly scattered beneath the European Foreland in France. Sections B and C are both perpendicular to the Alpine Chain, crossing the Po Basin, Southern and Central Alps, the Molasse Basin into Southern Germany. A common feature is that the distribution of fast axes is more coherent when entering the European foreland (EF) from the south, where the average value stabilises around  $45^\circ$  (section B) and  $\sim 60^\circ$  (section C). The onset of homogeneity, however, starts below the Central Alps in section B, while further east along section C, the Periadriatic Fault (Figure 1) marks the transition from complex anisotropy to simple coherent measurements. In section C,  $\phi$  in the European Foreland rotates from  $\sim 60^\circ$  beneath the Molasse Basin to almost  $90^\circ$  in South Germany, across the Moldanubian and Saxothuringian terranes (Figure 5).

## 5. Discussion

### 5.1 Comparison with previous SKS-splitting studies

Our measurements of  $\phi$  and  $dt$  are generally coherent, similar in magnitude and direction with previous studies of SKS anisotropy at neighbouring stations and provide a smooth spatial continuity in the previously irregular measurement coverage (Figures 5 and 6a). The average clockwise rotation of  $\phi$  directions from the Western to the Central Alps are in agreement with results from Salimbeni et al. (2018) and Barruol et al. (2011), although more significant single station heterogeneity is displayed by stations located in the French Western Alps, implying more complex anisotropic structure in the deformed foreland European lithosphere than measurements in the Swiss Central Alps. Around  $10^\circ$  longitude, the secondary E-W trending  $\phi$  pattern becomes more evident in the Central-Eastern Alps transition, as also noticed by Bokelmann et al. (2013) and Qorbani et al. (2015), although a more abrupt change was considered to occur at  $\sim 13^\circ$ , across the Tauren window in Austria. The ENE-SSW average measurements are also in agreement with the studies of Kummerow et al. (2006) and Bokelmann et al. (2013).

In the eastern Alpine region, in Austria and NE Italy, more heterogeneous  $\phi$  directions (Figure 4) are similar to previous measurements (Salimbeni et al., 2013; Qorbani et al., 2015), where multilayer modelling suggested an interference between eastward directed flow above a deeper detached Tethyan slab with intrinsic anisotropy (Qorbani et al., 2015). A secondary E-W fast anisotropy trend is also present in the eastern Southern Alps and the eastern Po Basin, similar to measurements of Salimbeni et al. (2013), who suggested that the juxtaposition of the Alpine and Dinaric mantle deformational fields may play a role in the detected  $\phi$  variations.

North of the Alpine Front, in the Molasse Basin and in the underlying Hercynian-aged Saxothuringian-Moldanubian structures, our measurements are generally consistent both in  $\phi$  direction and delay times with the SKS parameters estimated at permanent and temporary stations in Germany (Bormann et al., 1996; Plenefisch et al., 2001; Walther et al., 2013). While

the ESE-WNW direction is dominant, a progressive change in  $\phi$  directions across the Molasse Basin and the underlying Saxothuringian-Moldanubian terranes, evident especially in section C (Figure 5), has also been pointed out by Plenefisch et al. (2001). Some stations in the Saxothuringian-Moldanubian transition yielded only null measurements (Figure 5), and a secondary N-S trend also develops in the Molasse Basin, similar to one station analysed near the Rhine Graben by Walther et al. (2013).

## 5.2 Depth and source of SKS anisotropy in the Alpine region

A first-order indication of the depth of anisotropy or the path of the anisotropic SKS phase is the splitting delay time. The continental crust typically accounts for only 0.1-0.3 s (Silver, 1996) or 0.1-0.5 s (Barruol and Mainprice, 1993) contribution to the observed SKS splitting delay, which are incomparably smaller than our  $\delta t$  values with a mean of 1.4 s, requiring a mantle contribution. Furthermore, we can estimate the thickness of an anisotropic layer using the average  $dt$  as  $L = dt \times \beta / k$  (Silver and Chan, 1988; Helffrich, 1995), where  $\beta$  is the shear velocity (4.48 km/s in the upper mantle, Kennett et al., 1995) and  $k$  is the average anisotropy percentage (4% average in the upper 200 km, Savage, 1999), yielding  $\sim 160$  km of possible anisotropic path length. This estimate exceeds the crustal or even lithospheric depths proposed in the Alps (between 80 and 110 km, Miller and Agostinetti, 2012; Geissler et al., 2010; Bianchi et al., 2014), suggesting that the SKS signal may either represent asthenospheric flow beneath the orogen, or it is a combination of lithospheric deformation and underlying mantle flow.

Most collisional orogenic systems are characterised by anisotropy that aligns with the structural grain of the belt and has often been considered to reflect asthenospheric flow due to collision (e.g. Meissner et al., 2002) or a signature of combined asthenospheric origin and vertically coherent deformation within the lithosphere (Wang et al., 2008; Chang et al., 2015; Kuo et al., 2018). To better constrain the depth and eventually the vertical coherency of the anisotropy sampled by SKS, we compare our measurements with the direction of the anisotropy described by the Pn phase (Diaz et al., 2012), which propagates along the Moho interface and is indicative of subcrustal anisotropic properties (Figure 6). SKS fast axis directions are somewhere similar to Pn anisotropy in the Western-Central Swiss Alps, Southern and Eastern Alps, and partially in the Molasse Basin, but disagree with it north of  $\sim 47^\circ$  latitude and in northeast France. In addition, an ambient noise study of azimuthal anisotropy in the Swiss Alps (Fry et al., 2010), detected a change in anisotropy orientation from orogen-parallel within the crust to orogen-perpendicular directions at lower crustal depths. If the equivalent anisotropic layer thickness is  $\sim 160$  km and lithospheric thickness is  $\sim 80$  km in the area, at least part of the SKS anisotropic path must reside in the lithosphere. However, at least in the Central (Swiss) Alpine region, the lack of back azimuthal variation in SKS observations at single stations (Figure 4) is not consistent with multiple layers of anisotropy, but rather indicative of simple asthenospheric flow or/and a coupled lithosphere-asthenosphere deformation, with an unchanged anisotropy with depth.

The approximate source depth of anisotropy can also be estimated by evaluating the possible overlap of SKS Fresnel zones at a certain range of depths (Alsina and Snieder, 1995). **The radius of the Fresnel zone  $R_f$ , can be estimated from the**

typical period  $T$  of the SKS phase, that is around 10 s (value used here), the S-wave velocity  $v$  at depth  $h$ , and the angle of incidence  $\theta$  as

$$R_f = \sqrt{(Tv_h/2\cos(\theta))} \quad \text{eq(1)}$$

(e.g. Pearce and Mittleman, 2002; Margheriti et al., 2003). The depth at which Fresnel zones of SKS phases coming from opposite directions overlap is usually interpreted to show an upper bound for the anisotropy source. Figure 6b shows examples of Fresnel zones for two AlpArray stations that show anomalous SKS observations with respect to the surrounding stations. Fresnel analysis at both stations shows that Fresnel zones for two opposite SKS waves intersect at least down to ~200 km, suggesting that different anisotropic sources must reside below this depth. At station A288A, in the Southern Alps, south of the Insubric Fault, the geological suture between Europe and Adria, Fresnel zones at 200 km still partially overlap, suggesting an even deeper source in this region. Here, estimates of the LAB depth show a lithospheric thickness of ~140 km (Miller and Agostinetti, 2012) at the approximate location of A288A. In contrast, LAB depths at station A037A are shallower, with estimates between 70-90 km (Bianchi et al., 2014) and 100-120 km (Geissler et al., 2010). In both sites we can infer a lateral variation in the anisotropy pattern below LAB.

**A quick comparison between LAB depth variations in the Alpine region and delay times does not yield a clear correlation, which should also support a non-lithospheric source signal. Most S-receiver function based LAB estimates generally indicate LAB depths in the 90-140 km range beneath the Alps (Geissler et al., 2010; Miller and Agostinetti, 2012; Bianchi et al., 2014), decreasing to 80-100 km north of the European Front (Geissler et al., 2010). In contrast, Plomerova et al. (2010) infers lithospheric thicknesses of up to 230 km beneath the Alps and ~100 km north of the Front. LAB estimates thus vary between studies and the actual boundary remains elusive especially in on-slab locations, where slabs plunge almost vertically, but a large-scale decrease towards the north is a common feature. However, delay time variability (Figure 4a) does not mirror this large-scale decrease, providing further support for an asthenospheric source.**

### 5.3 Comparison with tomography: relationships with slabs and circum-Alpine seismic anomalies

To understand how deeper upper-mantle structure may be connected with SKS observations, we also test for correspondence between our measurements and 3D seismic heterogeneities (Figure 7). A high- $V_p$  anomaly, often interpreted as the southward plunging European slab, lies beneath the Alpine chain obliquely (Figure 1), extending under the western Po-Basin, Southern, Central, and Eastern Alps, down to ~300 km (Lippitsch et al., 2003; Piromallo and Morelli, 2003; Giacomuzzi et al., 2011; Zhu et al., 2015; Zhao et al., 2016). Stations in the Western Alps, part of the Central Alps, and the Molasse Basin are underlain by negative  $V_p$  anomalies and are usually interpreted to be located on the fore-arc side of the southward plunging European slab. SKS parallel the trend of the positive anomaly and do not seem to change directions across its boundaries. We chose to interpret our observations in relation to the most recent seismic tomography of Europe (Zhu et al., 2015), especially because the model incorporates azimuthal anisotropy parameters. Purely isotropic velocity



models are prone to contamination with artefact anomalies, where anisotropy has not been taken into account (e.g. Bezada et al., 2016).

305 Surveys of crustal structure and upper-mantle tomography images of the Alpine chain led to a different interpretation for the origin of the Alpine slab beneath the Eastern Alps, suggesting that a lithospheric fragment lithologically linked to the Adria plate dips northward beneath the eastern section of the orogen (Lippitsch et al., 2003; Handy et al., 2015). A switch in subduction polarity is thus expected at the transition between the Western and Eastern Alps, around 10°-11°E. However, there is no marked change in SKS anisotropy at that longitude, except for a progressive clockwise reorientation of the SKS axes (Figure 5), which broadly follow the orogenic trend and parallel the strike of the positive seismic velocity anomalies.

310 The secondary E-W  $\phi$  distribution (Figure 4) appears at stations located east of 10° longitude, at the border between Switzerland, Austria and NE Italy. Bokelmann et al. (2013) also identifies a change in SKS directions although the onset of this trend is placed more eastward, across the Tauern window, where the Adriatic indenter is known to act towards the N-NE (Bus et al., 2009), actively causing tectonic escape of the Eastern Alpine units (Kummerow et al., 2006). While SKS patterns are not sufficient evidence to support a hypothetical switch in subduction polarity at 10-11°, the subtle change in single

315 station individual SKS  $\phi$  patterns implies a change in mantle deformation styles at this longitude, either due to escape mechanisms or the influence of a more complex slab structure beneath.

In the western Po Basin, multiple positive seismic velocity anomalies coalesce (Figure 7), likely the signature of the complex interaction between the subducted northwestern segment of Adria and the southeastward plunging European lithosphere. **Here, measurements are more heterogeneous (Figure 4), probably indicating complex and reduced flow patterns due to the presence of multiple subductions and a strongly reduced supra slab space (Figure 8).**  $\phi$  directions show a transition from the typical central Alpine NE-SW trend towards a N-S orientation that continues into the Apennines (Figure 5). In the eastern Po Basin, low negative seismic anomalies, coupled with high subsidence rates and isostasy imbalance estimates, pointed out a possible asthenospheric downwelling mechanism (Faccenna et al., 2014). However, vertical movement of mantle material would have a significant effect on SKS measurements (e.g. Xue and Allen, 2005; Levin et al.,

325 2018, Petrescu et al. 2020). Vertically-oriented deformation in the upper mantle would be transparent to the nearly vertical propagation path of SKS phases, whose particle motion samples the horizontal azimuthal anisotropy. **Our SKS measurements in the eastern Po Basin are especially devoid of null-measurements (Figure 4b) and thus do not support this hypothesis; on the contrary, here it is possible to assume that the supra European slab space is large enough to host the eastward mantle flow coming from beneath the Apennines (Figure 8), in agreement also with**

330 **previous possible flow scenarios (Király et al., 2018 and references therein).**

#### 5.4 Extent of asthenospheric flow in response to collision north of the Alpine Front

**Most SKS observations from the high-topography region south of the Alpine Front are interpreted as collision-related asthenospheric flow developing an A-type olivine fabric (Barruol et al., 2011; Bokelmann et al., 2013; Qorbani**

335 et al., 2015). While this explanation may be justified in a region of recent orogenic activity, the similarity between  
SKS measurements north of the Alpine Front and those south of it (Figure 5) begs the question whether anisotropy  
beneath stable Europe is still related to the Alpine orogeny and the vertically plunging slabs act as flow-barriers  
(Figure 8). North and northwest of the Alpine Front, the European lithosphere suffered pre-Alpine deformation during the  
Hercynian Orogeny with remnant sutures trending along an approximate WSW-ENE direction (Figure 1). The most recent  
340 phases of extension affecting the Rhine Graben follow the same orientation as the Hercynian surface geologic trends (e.g.  
Schumacher, 2002), raising the possibility that anisotropy measurements here also record more recent lithospheric extension,  
as also proposed by Walther et al. (2013).

North of the Alpine Front, our measured SKS fast axis directions parallel both surface geological structures (Figure 4) and  
absolute plate motion direction in a no-net rotation frame (Figure 7; GSRMv2.1, Kreemer et al., 2014; ITRF2014,  
345 Altamini et al., 2016; HS3-NUVEL1A, Grip and Gordon, 2002) and are perpendicular to maximum horizontal stress  
(oriented mostly NNW-SSE, Heidbach et al., 2018). However, LAB depths beneath the Molasse Basin are too shallow (80-  
100 km; Geissler et al., 2010) compared to the anisotropic layer thickness estimated from delay times (~170 km) to justify a  
purely lithospheric contribution to the observed anisotropy. Fresnel arguments support that the strongest anisotropy may be  
located below ~200 km depth, where it varies laterally. The slow speed plate motion may be insufficient to induce coherent  
350 basal drag mineral fabrics (Debayle and Ricard, 2013), so we can discard the influence of absolute plate movement as well.  
Moreover, the crustal contribution is too small to be taken into consideration (Barruol and Mainprice, 1993) and the  
discrepancy between Pn anisotropy mostly sensitive to lower-crustal and sub-Moho depth ranges and our SKS measurements  
(Figure 6) further supports a deeper source for the latter. **Therefore anisotropy beneath the circum-Alpine region has a  
clear sub-lithospheric contribution and most probably reflects the effect of Alpine collision, suggesting the presence of**  
355 **vertical slabs beneath the Alps that control asthenospheric flow for a few hundred km beneath the European foreland**  
(Figure 8). The change in SKS fast polarisations across the Alpine Front is, however, more significant further west in Profile  
A (Figure 5), where homogeneously distributed anisotropy observations in the Swiss Alps switch into the less coherent  
directions estimated at stations west of the Rhine Graben (Figure 4). Up to 90°  $\phi$  changes occur in the proximity of a fast  
seismic anomaly that develops in north-east France (Figure 7). This upper-mantle anomaly, possibly a remnant Hercynian  
360 lithospheric root, may be affecting the surrounding flow, interacting with the barrier flow-field created by the Alpine slabs.  
**It is worth noting that part of the fast azimuths parallel to the Alpine chain could be explained also by the fabrics**  
**present within the vertically dipping mantle lithosphere and the entrained asthenospheric mantle. The mantle**  
**portions should then be characterized by a dip-parallel foliation containing the a- and c-axes of olivine, a mechanism**  
**that has been proposed to explain the trench-parallel fast azimuths along subduction zones forearcs (Song and**  
365 **Kawakatsu, 2012). Alternatively, the trench-parallel azimuths could in part be interpreted by the formation of B-type**  
**fabrics (Jung and Karato, 2006) in highly stressed regions of the collision zone close to the LAB, which are however**

**spatially limited. The occurrence of C- and E-type olivine fabrics requires the presence of water in the mantle, which is at odds with the sparse volcanism and magma compositions recorded in the area.**

Further north in central Germany, across the Moldanubian-Saxothuringian boundary, average SKS directions rotate clockwise by  $\sim 40^\circ$  (Figure 5, profile C). Plenefisch et al. (2001) also observed a rotation in fast axes across the Moldanubian to Saxothuringian terranes, interpreting it as an evidence that their boundary extends to lithospheric depths. At this distance, SKS observations can partially contain a lithospheric paleo-deformational signature (e.g. Babůska and Plomerová, 2006). However, LAB depths here are  $\sim 100$ - $120$  km (Geissler et al., 2010; Plomerová and Babůska, 2010), indicating a 60-80 km mantle lithosphere, assuming an average crustal thickness of 40 km. This is still too small to account for the observed splitting delay times (Figure 4), suggesting SKS anisotropy has a clear asthenospheric contribution, perhaps not related to Alpine or Hercynian deformation. As Bormann et al. (1996) also pointed out, seismically estimated temperatures at lithospheric depths may be too high to allow the development and long-time preservation of fossil anisotropy. The European lithosphere suffered thermal thinning due to Cenozoic rifting and possible mantle plume activity connected to the Atlantic plume system (e.g. Goes et al., 1999; Dèzes et al., 2004), whose far-field influence may start to be manifested here.

## 380 **6 Conclusions**

To place constraints on the mantle deformation beneath the Central Alps and the greater Alpine region, we analyse SKS splitting at 113 new broadband seismic stations belonging to the AlpArray seismic experiment and permanent stations in Italy, Austria, Switzerland, France, and Germany. SKS directions are mostly parallel to the orogenic strike and the trend of the subducted slabs beneath the Alpine Chain, rotating clockwise from  $-45^\circ$  to  $90^\circ$  from west to east. Splitting delay times average to  $\sim 1.4$  s and are mainly representative of active asthenospheric flow around the plunging Alpine slabs. There is no large scale change in SKS directions or delay times at the location of a putative subduction polarity switch beneath the Central Alps, although we note a certain subtle change in anisotropy complexity. Simple flow or a coupled lithosphere-asthenosphere deformation may dominate the mantle beneath the Central Swiss Alps, where directions follow a consistent NE-SW trend, while more complex structures develop beneath the Eastern Alps, in agreement with previous studies on this region and further east. In the Po Basin SKS directions differ between west and east: fast axes have prevailing N-S orientations in the western part beneath which opposite Adriatic flanks meet the European slab. East of  $\sim 10^\circ$  longitude, SKS directions become more scattered around the main NE-SW trend and do not support a presumed asthenospheric downwelling related to the subduction of Adria. North of the Alpine Front, orogen-parallel anisotropy persists, implying that the effect of the Alpine slabs acting as flow-barriers extends far beneath the foreland. At the contact between the Moldanubian and Saxothuringian terranes, sutured during the Hercynian Orogeny, directions experience an almost  $40^\circ$  rotation. However, the thin lithosphere beneath the region is insufficient to account for the observed splitting delay time. Therefore, we interpret anisotropy there as asthenospheric and that may start to feel the influence of mantle processes unrelated to past Hercynian

400 deformation, crustal extension, or the indentation of Adria. To the west of the Rhine Graben, in northeast France, a strong positive seismic anomaly is located at upper-mantle depths and SKS anisotropy measurements are highly variable in its proximity, suggesting a local perturbation in the flow-field in the greater Alpine region.

### Team list

The complete member list of the AlpArray Working Group can be found at <http://www.alparray.ethz.ch>.

### Acknowledgments

405 LP and MF were supported by the European Research Council project Newton Grant agreement 758199, under H2020-EU.1.1. The complete member list of the AlpArray Working Group can be found at <http://www.alparray.ethz.ch>. Data from permanent stations used in this study were obtained from multiple network archives: the Italian National Seismic Network (<https://doi.org/10.13127/SD/X0FXnH7QfY>), the Swiss Seismological Network (<https://doi.org/10.12686/sed/networks/ch>), the German Regional Seismic Network (<https://doi.org/10.25928/mbx6-hr74>), the French National Seismic Network  
410 (<https://doi.org/10.15778/RESIF.FR>), and the Province Sudtirolo Seismic Network (SI, <http://cnt.rm.ingv.it/en/instruments/network/SI>). Most figures were made using GMT software (Wessel and Smith, 1998).

### Supplementary Material

Tables of original measurements and average values discussed in this paper are included as Table1SM for no-null measurements, Table2SM for null measurements and Table3SM Average values.

### 415 References

- Allen, P.A., P., Homewood, and G.D., Williams, (1986), Foreland basins: An introduction, in Allen, P.A., and Homewood, P., eds., Foreland basins: International Association of Sedimentologists Special Publication 8, p. 3-12.
- Alsina, D., and R. Snieder (1995), Small-scale sublithospheric mantle deformation: constraints from SKS splitting observations., *Geophys. J. Int.*, 123, 431–448.
- 420 **Altamimi, Z., P., Rebischung, L., Métivier, and X., Collilleux (2016), ITRF2014: A new release of the International Terrestrial Reference Frame modeling nonlinear station motions, *J. Geophys. Res.*, 121, 6109-6131, <https://doi.org/10.1002/2016JB013098>.**
- Babůška V., and J., Plomerová (2006) European mantle lithosphere assembled from rigid microplates with inherited seismic anisotropy. *Phys Earth Planet Inter* 158: 264-280, <http://doi.org/10.1016/j.pepi.2006.01.010>.
- 425 Baccheschi, P., L. Margheriti, and M. Steckler (2007), Seismic anisotropy reveals focused mantle flow around the Calabrian slab (Southern Italy), *Geophys. Res. Lett.*, 34(5), doi: 10.1029/2006GL028899.

- Barruol, G., and R. Hoffmann (1999), Upper mantle anisotropy beneath the Geoscope stations, *J. Geophys. Res.*, 104(B5), 10,757–10.
- 430 Barruol, G., and D. Mainprice (1993), A quantitative evaluation of the contribution of crustal rocks to the shear-wave splitting of teleseismic SKS waves., *Phys. Earth Planet. Int.*, 78, 281–300.
- Barruol, G., M. Bonnin, H. Pedersen, G. H. Bokelmann, and C. Tiberi (2011), Belt-parallel mantle flow beneath a halted continental collision: The Western Alps, *Earth Planet. Sci. Lett.*, 302(3-4), 429–438, doi:10.1016/j.epsl.2010.12.040.
- 435 Bezada, M., M. Faccenda, and D. Toomey (2016), Representing anisotropic subduction zones with isotropic velocity models: A characterization of the problem and some steps on a possible path forward, *Geochem. Geophys. Geosyst.*, 17 (8), 3164–3189, doi:10.1002/2016GC006507.
- Bianchi, I., M. S. Miller, and G. Bokelmann (2014), Insights on the upper mantle beneath the Eastern Alps, *Earth and planetary science letters*, 403, 199–209, doi: 10.1016/j.epsl.2014.06.051.
- Bokelmann, G., E. Qorbani, and I. Bianchi (2013), Seismic anisotropy and large-scale deformation of the Eastern Alps, *Earth Planet. Sci. Lett.*, 383, 1–6, doi:10.1016/j.epsl.2013.09.019.
- 440 Bormann, P., G. Grünthal, R. Kind, and H. Montag (1996), Upper mantle anisotropy beneath central Europe from SKS wave splitting: effects of absolute plate motion and lithosphere-asthenosphere boundary topography?, *J. Geodyn.*, 22(1-2), 11–32, doi: 10.1016/0264-3707(96)00014-2.
- Buontempo, L., G. Bokelmann, G. Barruol, and J. Morales (2008), Seismic anisotropy beneath southern Iberia from SKS splitting, *Earth Planet. Sci. Lett.*, 273(3-4), 237–250, doi: 10.1016/j.epsl.2008.06.024.
- 445 Bus, Z., G. Grenerczy, L. Táóth, and P. Máonus (2009), Active crustal deformation in two seismogenic zones of the Pannonian region—GPS versus seismological observations, *Tectonophysics*, 474, 343–352, doi:10.1016/j.tecto.2009.02.045.
- Chang, L., L. M. Flesch, C.-Y. Wang, and Z. Ding (2015), Vertical coherence of deformation in lithosphere in the eastern Himalayan syntaxis using GPS, Quaternary fault slip rates, and shear wave splitting data, *Geophys. Res. Lett.*, 42(14), 5813–5819, doi: 10.1002/2015GL064568.
- 450 Civello, S., and L. Margheriti, (2004), Toroidal mantle flow around the Calabrian slab (Italy) from SKS splitting, *Geophys. Res. Lett.*, 31 (10), doi:10.1029/2004GL019607.
- Coward, M., and D. Dietrich (1989), *Alpine tectonic overview*, Geological Society, London, Special Publications, 45(1), 1–29, doi:10.1144/GSL.SP.1989.045.01.01.
- Eakin, C. M., Wirth, E. A., Wallace, A., Ulberg, C. W., Creager, K. C., and Abers, G. A., (2019), SKS splitting**
- 455 **beneath Mount St. Helens: Constraints on sub slab mantle entrainment. *Geochemistry, Geophysics, Geosystems*, 20, 4202–4217. <https://doi.org/10.1029/2019GC008433>.**
- Darbyshire, F. A., I. D., Bastow, A. M., Forte, T. E., Hobbs, A., Calvel, A., Gonzalez-Monteza, and B., Schow, (2015), Variability and origin of seismic anisotropy across eastern Canada: Evidence from shear wave splitting measurements, *J. Geophys. Res. Solid Earth*, 120, 8404–8421, doi:10.1002/2015JB012228.**
- 460 **Davis, J. C. (2002), *Statistics and data analysis in geology - 3rd edition*, Wiley ed.**

- Debayle, E., and Y. Ricard, (2013), Seismic observations of large-scale deformation at the bottom of fast-moving plates, *Earth. Planet. Sci. Letters*, <http://dx.doi.org/10.1016/j.epsl.2013.06.025>.
- Dèzes, P., S. Schmid, and P. Ziegler (2004), Evolution of the European Cenozoic Rift System: interaction of the Alpine and Pyrenean orogens with their foreland lithosphere, *Tectonophysics*, 389(1-2), 1–33, doi:10.1016/j.tecto.2004.06.011.
- 465 Diaz, J., J. Gallart, A. Villasenõr, F. Mancilla, A. Pazos, D. Córdoba, J. Pulgar, P. Ibarra, and M. Harnafi (2010), Mantle dynamics beneath the Gibraltar Arc (western Mediterranean) from shear-wave splitting measurements on a dense seismic array, *Geophys. Res. Lett.*, 37 (18), doi:10.1029/2010GL044201.
- Diaz, J., A. Gil, and J. Gallart (2012), Uppermost mantle seismic velocity and anisotropy in the Euro-Mediterranean region from Pn and Sn tomography, *Geophys. J. Int.*, 192 (1), 310–325, doi:10.1093/gji/ggs016.
- 470 Faccenna, C., T. W. Becker, M. S. Miller, E. Serpelloni, and S. D. Willett (2014), Isostasy, dynamic topography, and the elevation of the Apennines of Italy, *Earth Planet. Sci. Lett.*, 407, 163–174.
- Fouch, M. J., and S. Rondenay (2006), Seismic anisotropy beneath stable continental interiors, *Phys. Earth Planet. Int.*, 158(2), 292–320, doi:10.1016/j.pepi.2006.03.024.
- Froitzheim, N., D. Pläsenka, and R. Schuster (2008), Alpine tectonics of the Alps and Western Carpathians, *The Geology of*
- 475 *Central Europe*, 2, 1141–1232.
- Fry, B., F. Deschamps, E. Kissling, L. Stehly, and D. Giardini (2010), Layered azimuthal anisotropy of Rayleigh wave phase velocities in the European Alpine lithosphere inferred from ambient noise, *Earth Planet. Sci. Lett.*, 297 (1-2), 95–102, doi:10.1016/j.epsl.2010.06.008.
- Geissler, W. H., F. Sodoudi, and R. Kind (2010), Thickness of the central and eastern European lithosphere as seen by S
- 480 receiver functions, *Geophys. J. Int.*, 181(2), 604–634, doi: 10.1111/j.1365-246X.2010.04548.x.
- Giacomuzzi, G., C. Chiarabba, and P. De Gori (2011), Linking the Alps and Apennines subduction systems: new constraints revealed by high-resolution teleseismic tomography, *Earth Planet. Sci. Lett.*, 301(3-4), 531–543, doi:10.1016/j.epsl.2010.11.033.
- Goes, S., W. Spakman, and H. Bijwaard (1999), A lower mantle source for central European volcanism, *Science*, 286(5446),
- 485 1928–1931, doi:10.1126/science.286.5446.1928.
- Gripp, A. E., and R.G., Gordon (2002), Young tracks of hotspots and current plate velocities, *Geophys. J. Int.*, 150, 321-361 <https://doi.org/10.1046/j.1365-246X.2002.01627.x>**
- Handy, M. R., S. M. Schmid, R. Bousquet, E. Kissling, and D. Bernoulli (2010), Reconciling plate-tectonic reconstructions of Alpine Tethys with the geological–geophysical record of spreading and subduction in the Alps, *Earth-Science Reviews*,
- 490 102(3-4), 121–158, doi: 10.1016/j.earscirev.2010.06.002.
- Handy, M. R., K. Ustaszewski, and E. Kissling (2015), Reconstructing the Alps–Carpathians–Dinarides as a key to understanding switches in subduction polarity, slab gaps and surface motion, *Int. J. of Earth Sci.*, 104 (1), 1–26, doi:10.1007/s00531-014-1060-3.

- 495 Heidbach, O., M. Rajabi, X. Cui, K. Fuchs, B. Müller, J. Reinecker, et al (2018), The World Stress Map database release 2016: crustal stress pattern across scales. *Tectonophys.*, 744:484–498, <https://doi.org/10.1016/j.tecto.2018.07.007>.
- Helffrich, G. (1995), Lithospheric deformation inferred from teleseismic shear wave splitting observations in the United Kingdom, *J. Geophys. Res.*, 100 (B9), 18,195–18,204.
- Hetényi, G., I. Molinari, J. Clinton, G. Bokelmann, I. Bondár, W. C. Crawford, J.-X. Dessa, C. Doubre, W. Friederich, F. Fuchs, et al. (2018), The AlpArray Seismic Network: A large scale European experiment to image the Alpine orogen, 500 *Surveys in Geophysics*, 39(5), 1009– 1033, doi:10.1007/s10712-018-9472-4.
- Jung, H., Katayama, I., Jiang, Z., Hiraga, T., Karato S.-I. (2006) Effect of water and stress on the lattice-preferred orientation of olivine. *Tectonophys.* 421, 1-22.**
- Kennett, B. L. N., E. R. Engdahl, and R. Buland (1995), Constraints on seismic velocities in the earth from traveltimes, *Geophys. J. Int.*, 122, 108–124.
- 505 Király, Á., Faccenna, C., and Funiciello, F. (2018). Subduction zones interaction around the Adria microplate and the origin of the Apenninic arc. *Tectonics*, 37, 3941–3953. <https://doi.org/10.1029/2018TC005211>
- Kreemer, C., G. Blewitt, and E. C. Klein (2014), A geodetic plate motion and Global Strain Rate Model, *Geochem. Geophys. Geosyst.*, 15, doi:10.1002/2014GC005407.
- Kummerow, J., R. Kind, T. W. Group, et al. (2006), Shear wave splitting in the Eastern Alps observed at the TRANSALP 510 network, *Tectonophysics*, 414(1-4), 117–125, doi: 10.1016/j.tecto.2005.10.023.
- Kuo, B.-Y., S.-C. Lin, and Y.-W. Lin (2018), SKS splitting and the scale of vertical coherence of the Taiwan mountain belt, *J. Geophys. Res.*, 123(2), 1366–1380, doi:10.1002/2017JB014803.
- Levin, V., M. D. Long, P. Skryzalin, Y. Li, and I. López (2018), Seismic evidence for a recently formed mantle upwelling beneath New England, *Geology*, 46(1), 87–90.
- 515 **Liddell, M. V. , I., Bastow, F., Darbyshire, A., Gilligan, S., Pugh, (2017), The formation of Laurentia: Evidence from shear wave splitting, *Earth and Plan. Sci. Lett.*, 479, 170-178, <https://doi.org/10.1016/j.epsl.2017.09.030>.**
- Lippitsch, R., E. Kissling, and J. Ansorge (2003), Upper mantle structure beneath the Alpine orogen from high-resolution teleseismic tomography, *J. Geophys. Res.*, 108 (B8), doi: 10.1029/2002JB002016.
- Long, M., and P. Silver (2009), Shear Wave Splitting and Mantle Anisotropy: Measurements, Interpretations, and New 520 Directions, *Surveys in Geophysics*, 30(4), 407–461, doi: 10.1007/s10712-009-9075-1.
- Long, M. D., and T. W. Becker (2010), Mantle dynamics and seismic anisotropy, *Earth Planet. Sci. Lett.*, 297(3), 341–354, doi:10.1016/j.epsl.2010.06.036.
- Long, M. D., H. A. Ford, L. Abrahams, and E. A. Wirth (2017), The seismic signature of lithospheric deformation beneath eastern North America due to Grenville and Appalachian orogenesis, *Lithosphere*, 9(6), 987–1001, doi:10.1130/L660.1.
- 525 Lucente, F. P., L. Margheriti, C. Piromallo, and G. Barruol (2006), Seismic anisotropy reveals the long route of the slab through the western-central Mediterranean mantle, *Earth Planet. Sci. Lett.*, 241(3-4), 517–529, doi:10.1016/j.epsl.2005.10.041.

- Mainprice, D., G. Barruol, and W. B. Ismail (2000), The seismic anisotropy of the Earth's mantle: from single crystal to polycrystal, *Earth's Deep Interior: Mineral physics and tomography from the atomic to the global scale*, 117, 237–264, doi:10.1029/GM117p0237.
- 530 Margheriti, L., F. Lucente, and S. Pondrelli (2003), SKS splitting measurements in the Apenninic-Tyrrhenian domain (Italy) and their relation with lithospheric subduction and mantle convection, *J. Geophys. Res.*, 108 (B4), doi:10.1029/2002JB001793.
- Meissner, R., W. D. Mooney, and I. Artemieva (2002), Seismic anisotropy and mantle creep in young orogens, *Geophys. J. Int.*, 149 (1), 1–14, doi:10.1046/j.1365-246X.2002.01628.x.
- 535 Miller, M. S., and N. P. Agostinetti (2012), Insights into the evolution of the Italian lithospheric structure from S receiver function analysis, *Earth Planet. Sci. Lett.*, 345, 49–59.
- Mitterbauer, U., M. Behm, E. Brückl, R. Lippitsch, A. Guterch, G. R. Keller, E. Koslovskaya, E.-M. Rumpfhuber, and F. Sūmanovac (2011), Shape and origin of the East-Alpine slab constrained by the ALPASS teleseismic model, *Tectonophysics*, 510(1-2), 195–206, doi: 10.1016/j.tecto.2011.07.001.
- 540 Niu, F., and A. M. Perez (2004), Seismic anisotropy in the lower mantle: A comparison of wave- form splitting of SKS and SKKS, *Geophys. Res. Lett.*, 31 (24), doi:10.1029/2004GL021196.
- Petrescu, L., G. Stuart, G. Houseman, and I. Bastow (2020), Upper mantle deformation signatures of craton-orogen interaction in the Carpathian-Pannonian region from SKS anisotropy analysis, *Geophys. J. Int.*, doi:10.1093/gji/ggz573.
- 545 Pearce, J., and D., Mittleman, (2002), Defining the Fresnel zone for broadband radiation, *Phys. Rev. E*, 66(5), 056602, doi:10.1103/PhysRevE.66.056602.
- Piomallo, C., and C. Faccenna (2004), How deep can we find the traces of Alpine subduction?, *Geophys. Res. Lett.*, 31(6), doi:10.1029/2003GL019288.
- Piomallo, C., and A. Morelli (2003), P wave tomography of the mantle under the Alpine- Mediterranean area, *J. Geophys. Res.*, 108 (B2), doi:10.1029/2002JB001757.
- 550 Plenefisch, T., S. Faber, K.-P., Bonjer, (1994). Investigations of Sn and Pn phases in the area of the upper Rhine Graben and northern Switzerland, *Geophys. J. Int.*, 119, 402-420.
- Plomerová, J., and Babůska, V. (2010). Long memory of mantle lithosphere fabric—European LAB constrained from seismic anisotropy, *Lithos*, 120(1), 131–143.
- 555 Qorbani, E., I. Bianchi, and G. Bokelmann (2015), Slab detachment under the Eastern Alps seen by seismic anisotropy, *Earth Planet. Sci. Lett.*, 409, 96–108, doi:10.1016/j.epsl.2014.10.049.
- Qorbani, E., G. Bokelmann, I. Kovács, F. Horváth, and G. Falus (2016), Deformation in the asthenospheric mantle beneath the Carpathian-Pannonian Region, *J. Geophys. Res.*, 121 (9), 6644–6657, doi:10.1002/2015JB012604.
- Restivo, A., and G. Helfrich (1999), Teleseismic shear wave splitting measurements in noisy environments. *Geophys. J. Int.*
- 560 137 (3), 821–830.

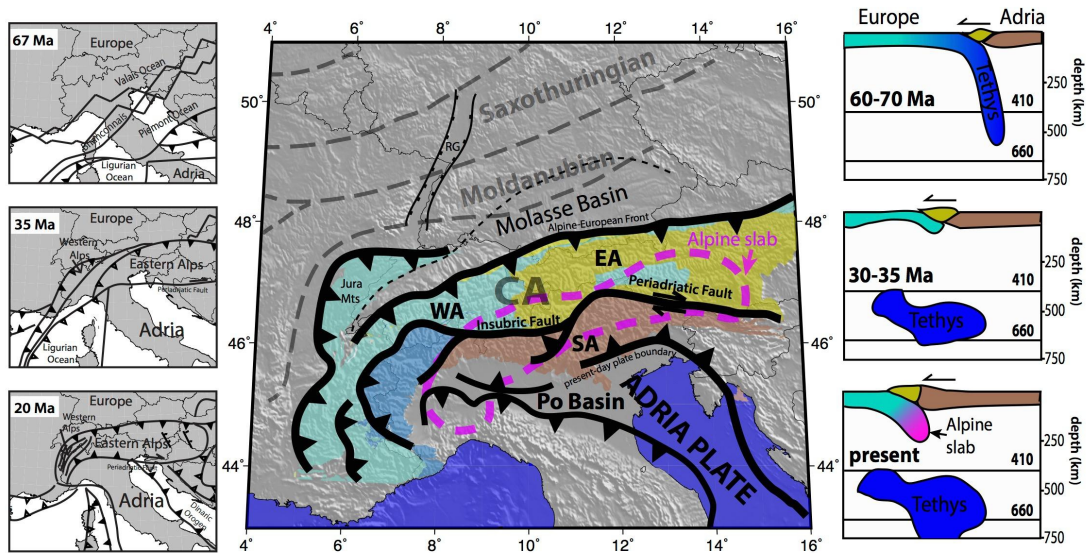


- Restivo, A., and G. Helfrich (2006), Core-mantle boundary structure investigated using SKS and SKKS polarization anomalies, *Geophys. J. Int.*, 165(1), 288–302.
- Ribe, N. M. (1989), Seismic anisotropy and mantle flow, *J. Geophys. Res.*, 94(B4), 4213–4223, doi:10.1029/JB094iB04p04213.
- 565 Ritter, J. R., M. Jordan, U. R. Christensen, and U. Achauer (2001), A mantle plume below the Eifel volcanic fields, Germany, *Earth Planet. Sci. Lett.*, 186 (1), 7–14, doi:10.1016/S0012-821X(01)00226-6.
- Rosenberg, C. L., A. Berger, N. Bellahsen, and R. Bousquet (2015), Relating orogen width to shortening, erosion, and exhumation during Alpine collision, *Tectonics*, 34(6), 1306–1328, doi:10.1002/2014TC003736.
- Salimbeni, S., S. Pondrelli, L. Margheriti, J. Park, and V. Levin (2008), SKS splitting measurements beneath Northern
- 570 Apennines region: a case of oblique trench-retreat, *Tectonophysics*, 462(1-4), 68–82, doi:10.1016/j.tecto.2007.11.075.
- Salimbeni, S., S. Pondrelli, and L. Margheriti (2013), Hints on the deformation penetration induced by subductions and collision processes: Seismic anisotropy beneath the Adria region (Central Mediterranean), *J. Geophys. Res.*, 118 (11), 5814–5826, doi:10.1002/2013JB010253.
- Salimbeni, S., M. G. Malusà, L. Zhao, S. Guillot, S. Pondrelli, L. Margheriti, A. Paul, S. Solarino, C. Aubert, T. Dumont, S.
- 575 Schwartz, Q. Wang, X. Xu, T. Zheng and R. Zhu (2018), Active and fossil mantle flows in the western Alpine region unravelled by seismic anisotropy analysis and high-resolution P wave tomography, *Tectonophysics*, 731, 35–47, doi:10.1016/j.tecto.2018.03.002.
- Savage, M. (1999), Seismic anisotropy and mantle deformation: What have we learned from shear wave splitting?, *Rev. Geophys.*, 37, 65–106, doi:10.1029/98RG02075.
- 580 Schmid, S., H. Aebli, F. Heller, and A. Zingg (1989), The role of the Periadriatic Line in the tectonic evolution of the Alps, 45 (1), 153–171.
- Schmid, S. M., B. Fügenschuh, E. Kissling, and R. Schuster (2004), Tectonic map and overall architecture of the Alpine orogen, *Eclogae Geologicae Helvetiae*, 97(1), 93–117, doi: 10.1007/s00015-004-1113-x.
- Schmid, S. M., D. Bernoulli, B. Fügenschuh, L. Matenco, S. Schefer, R. Schuster, M. Tischler, and K. Ustaszewski (2008),
- 585 The Alpine-Carpathian-Dinaridic orogenic system: correlation and evolution of tectonic units, *Swiss J. Geosci.*, 101(1), 139–183, doi:10.1007/s00015-008-1247-3.
- Schumacher, M. E. (2002), Upper Rhine Graben: role of preexisting structures during rift evolution, *Tectonics*, 21(1), 6–1.
- Silver, P., and G. Chan (1991), Shear wave splitting and subcontinental mantle deformation, *J. Geophys. Res.*, 96(B10), 16,429–16,454, doi:10.1029/91JB00899.
- 590 Silver, P., and W. Chan (1988), Implications for continental structure and evolution from seismic anisotropy, *Nature*, 335(6185), 34–39.
- Silver, P. G. (1996), Seismic anisotropy beneath the continents: Probing the depths of geology, *Annu. Rev. Earth Planet. Sci.*, 24 (1), 385–432.

- 595 Sinclair, H.D., (1997), Tectonostratigraphic model for underfilled peripheral foreland basin: An Alpine perspective. *Geol. Soc. Amer. Bull.* 109, 3, 324-346.
- Song, T.-R. A., and Kawakatsu, H. (2012) Subduction of oceanic asthenosphere: evidence from sub-slab seismic anisotropy. *Geophys. Res. Lett.*, 39, doi:10.1029/2012GL052639.**
- 600 Tommasi, A., M. Godard, G. Coromina, J. Dautria, and H. Barseczus (2004), Seismic anisotropy and compositionally induced velocity anomalies in the lithosphere above mantle plumes: a petrological and microstructural study of mantle xenoliths from French Polynesia, *Earth Planet. Sci. Lett.*, 227(3), 539–556, doi:10.1016/j.epsl.2004.09.019.
- Ustaszewski, K., S., Schmid, B. Fügenschuh, M. Tischler, E. Kissling, W. Spakman, (2008), A map-view restoration of the Alpine-Carpathian-Dinaridic system for the Early Miocene, *Swiss J. Geosci.*, 101, 273-294.
- 605 Walther, M., T. Plenefisch, and G. Rumpker (2013), Automated analysis of SKS splitting to infer upper mantle anisotropy beneath Germany using more than 20 yr of GRSN and GRF data, *Geophys. J. Int.*, 196(2), 1207–1236, doi:10.1093/gji/ggt456.
- Venereau, C. M. A., Martin-Short, R., Bastow, I. D., Allen, R. M., & Kounoudis, R., (2019), The role of variable slab dip in driving mantle flow at the eastern edge of the Alaskan subduction margin: Insights from shear-wave splitting. *Geochemistry, Geophysics, Geosystems*, 20, 2433–2448. <https://doi.org/10.1029/2018GC008170>.**
- 610 Wang, C.-Y., L. M. Flesch, P. G. Silver, L.-J. Chang, and W. W. Chan (2008), Evidence for mechanically coupled lithosphere in central Asia and resulting implications, *Geology*, 36(5), 363–366, doi:0.1130/G24450A.1.
- Wessel, P., and H.F. Smith (1998), New, improved version of 538 the generic mapping tools released, *Eos Trans AGU*, 539, 79-579; doi:10.1029/98EO00426.
- Wüstefeld, A., and G. Bokelmann (2007), Null detection in shear-wave splitting measurements, *Bull. Seis. Soc. Am.*, 97(4), 1204.
- 615 **Wüstefeld, A., Al-Harrasi, O., Verdon, J., Wookey, J. and Kendall, J-M. (2010), A strategy for automated analysis of passive microseismic data to image seismic anisotropy and fracture characteristics, *Geophysical Prospecting*, 58, 755–773, doi:10.1111/j.1365-2478.2010.00891.x.**
- Xue, M., and R. M. Allen (2005), Asthenospheric channeling of the Icelandic upwelling: Evidence from seismic anisotropy, *Earth Planet. Sci. Lett.*, 235(1-2), 167–182, doi: 10.1016/j.epsl.2005.03.017.
- 620 Zhao, L., A. Paul, M. G. Malusà, X. Xu, T. Zheng, S. Solarino, S. Guillot, S. Schwartz, T. Dumont, S. Salimbeni, et al. (2016), Continuity of the Alpine slab unraveled by high-resolution P wave tomography, *J. Geophys. Res.*, 121 (12), 8720–8737, doi:10.1002/2016JB013310.
- Zhu, H., E. Bozdağ, and J. Tromp (2015), Seismic structure of the European upper mantle based on adjoint tomography, *Geophys. J. Int.*, 201(1), 18–52, doi:10.1093/gji/ggu492.
- 625 Ziegler, P. A. (1992), European Cenozoic rift system, *Tectonophys.*, 208(1-3), 91–111, doi:10.1016/0040-1951(92)90338-7.



630



635 Figure 1: Geographical units of the Alpine Chain and surrounding regions. Coloured areas represent the main geological regions are based on Schmid et al. (2008) and mark the Eastern Alps (EA, yellow), the Southern Alps (SA, brown), and the Western Alps (WA, light and dark blue). TW: Tauern Window. Dashed pink line marks the probable outline of the Alpine slab, after Mitterbauer et al. (2011). Left: Plate tectonic reconstruction snapshots of the region for the past 67 Ma, according to Handy et al. (2010). Right: Time-lapse of probable trench migration and slab break-off beneath the Alps for the past 70 Ma, after Piromallo and Faccenna (2004). The section showing the Alpine slab (pink), attached to the European lithosphere (cyan), may only be applicable to the Western and Central Alps. In the Eastern Alps, the slab may be attached to Adria (yellow and brown).

640

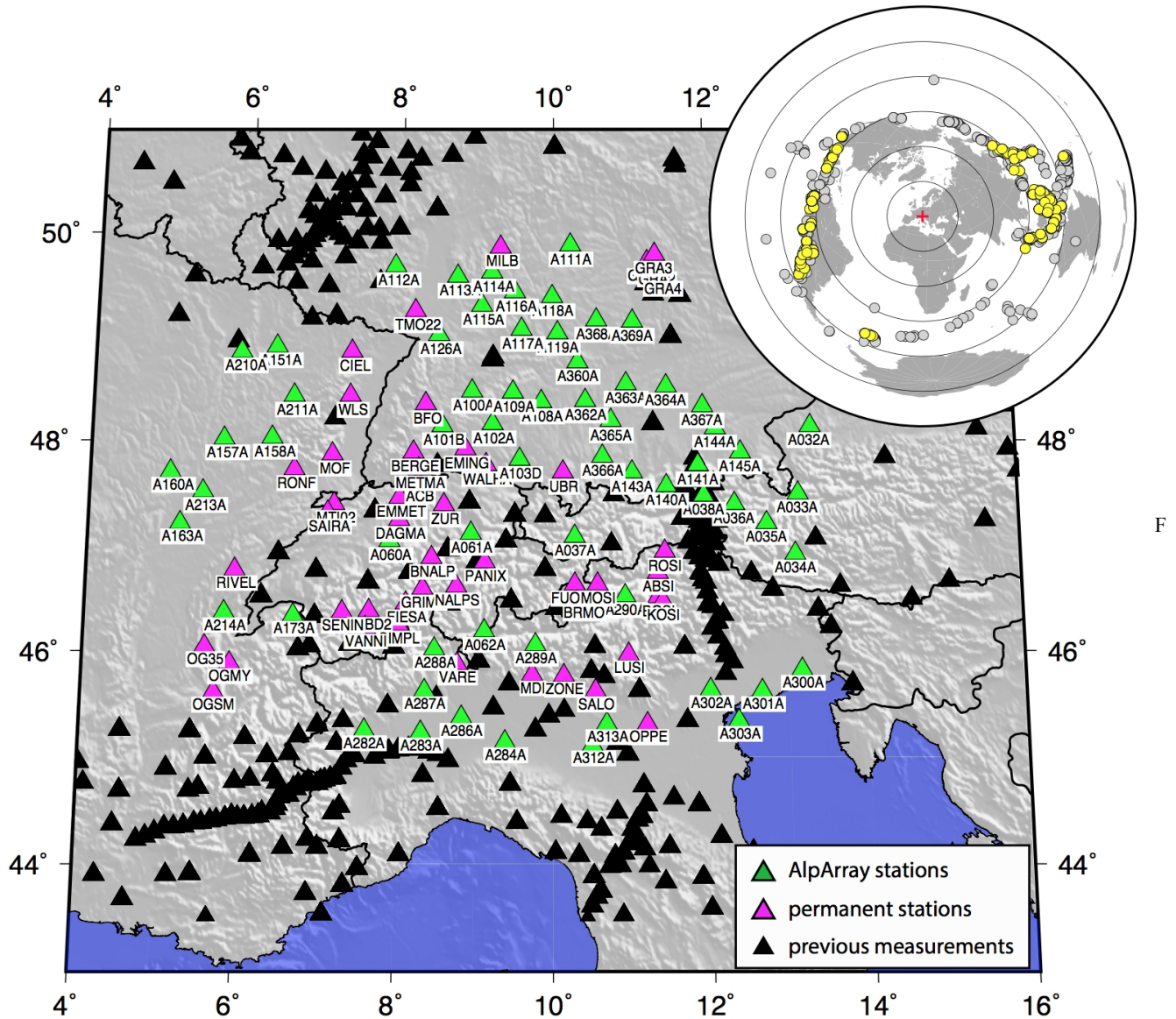
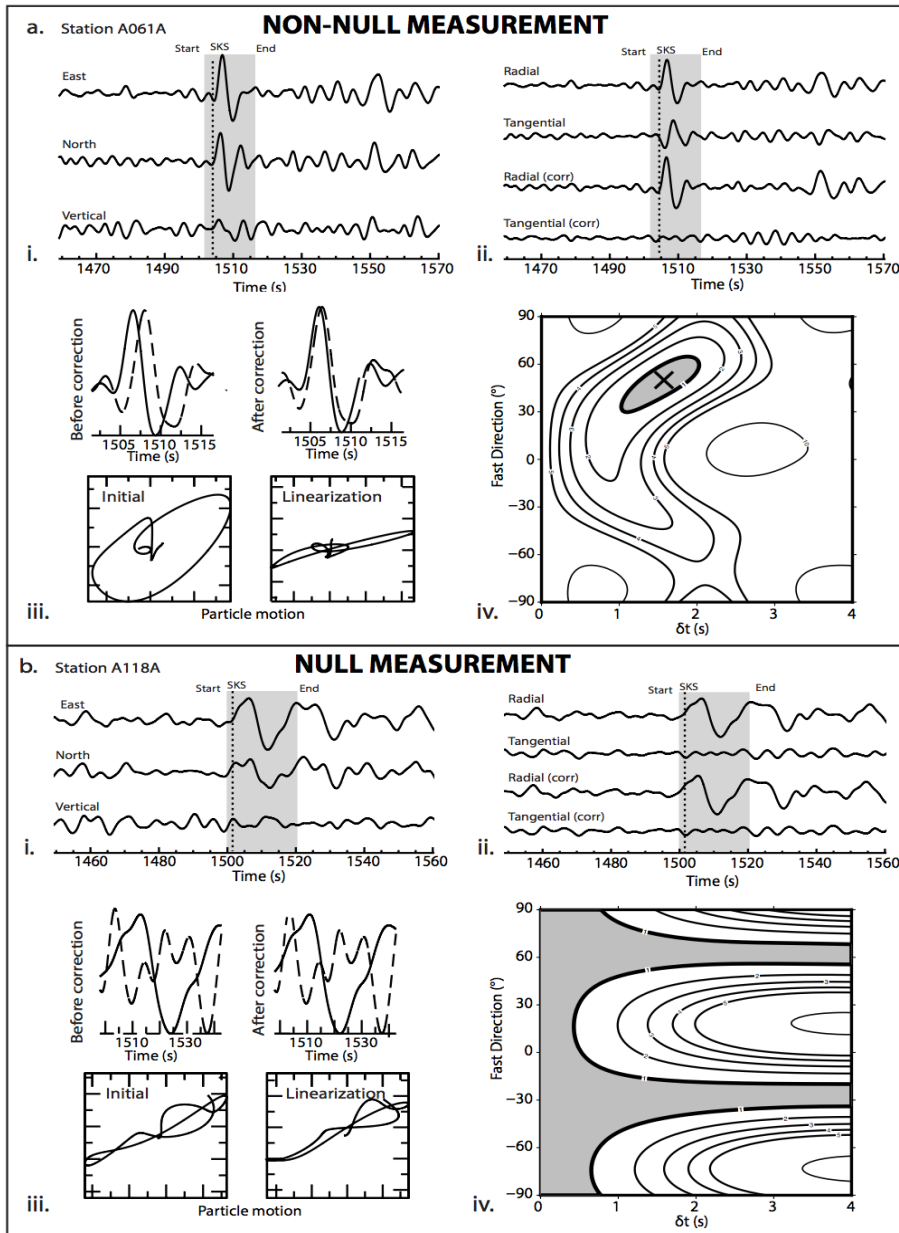


figure 2: Topographic and political map of the central Alpine region showing broadband seismic stations (triangles) whose data were analysed in this study, including AlpArray temporary stations (green), permanent stations (magenta), and stations with previous SKS measurements (black). Inset shows the location of all earthquakes recorded between 2015-2019 (grey circles), those analysed in this study (yellow circles), and the centre of our study area (red cross).

645



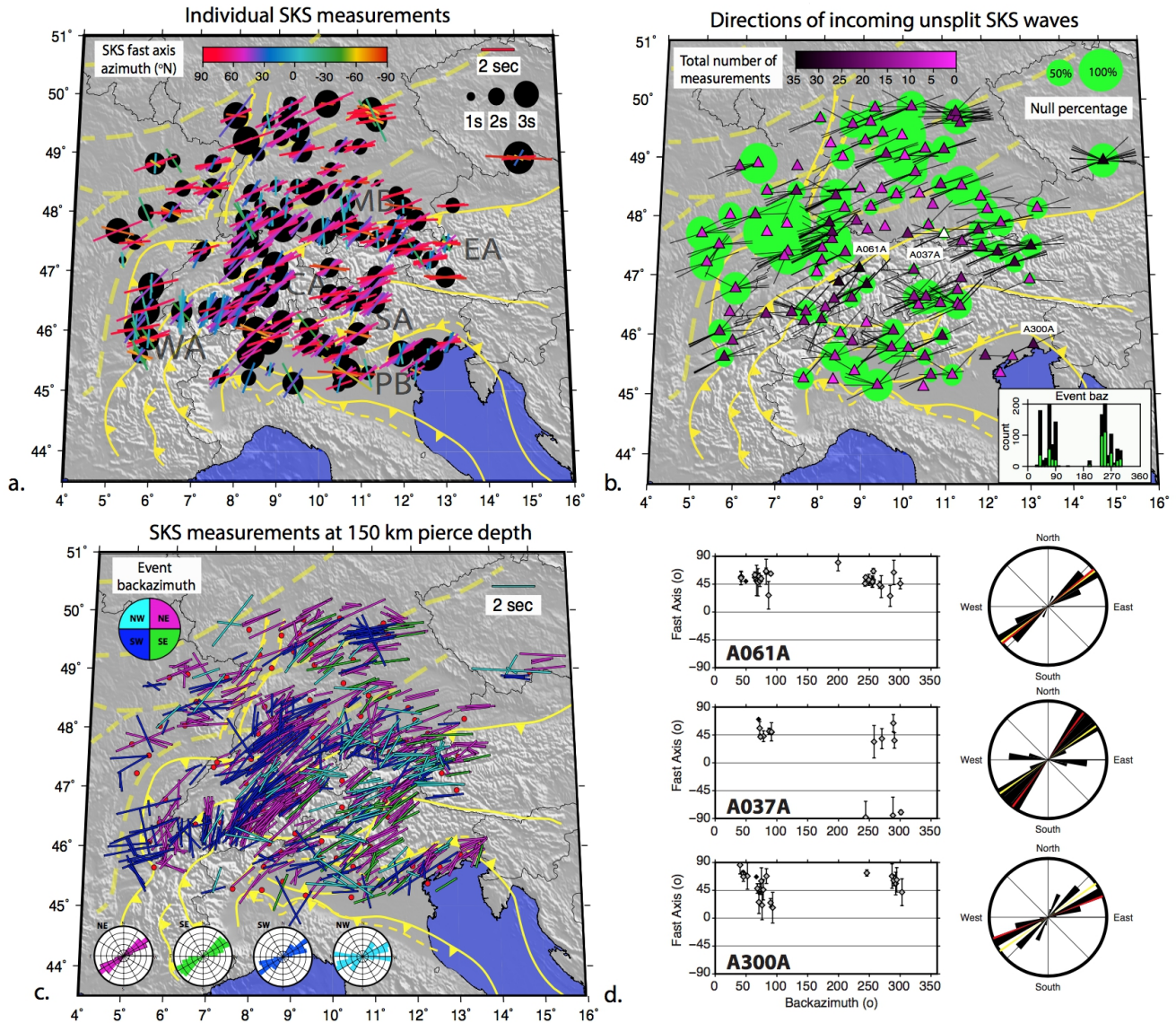
650

655

Figure 3: Examples of SKS analysis procedure for a successful SKS splitting measurement (a) and a situation where no energy is present on the tangential component, referred to as a null measurement (b). i. Three-component seismograms recorded at station A061A, with the time window including SKS phase highlighted. ii. The radial and tangential component seismograms, after rotation to the great circle arc (top two) and after the SKS splitting correction (bottom two). iii. Top: Time windows of the radial (black line) and tangential (dashed line) components showing the SKS phase before and after the correction. Bottom: Particle motion before and after correction. iv. Misfit contour surface showing the best solution pair of  $dt$  and  $\phi$  (cross) and the 1-sigma uncertainty surface (highlighted region).



660



665

670

Figure 4: a) Map of individual SKS fast axis (bars) and time delay (black circles) measurements at seismic stations. Colours represent SKS fast axis back-azimuth. Yellow lines are major tectonic faults. Dashed yellow lines mark the limits of the Molasse and the Po sedimentary basins, respectively. b) Map of the Alpine region comprising the percentage of nulls (green circles) from the total number of measurements at each seismic station (coloured triangles). Bars indicate the direction of incoming SKS waves which yielded null measurements. Inset: histogram of high-quality earthquakes analysed in this study (black bars) and the number of nulls (green bars) in  $10^\circ$  back-azimuthal bins. c) SKS measurements (bars) coloured with respect to the back-azimuth and shifted to the 150 km piercing point. Red points are the stations. Rose diagrams represent polar histograms of the SKS fast axis directions, for earthquakes coming from the NW, NE, SW, and SE, respectively. d) Results at stations from different regions: A061A (Swiss Alps), A037A (Central Alps) and A300A (Eastern Po Basin), also labelled in panel b. Left: Plots of the SKS fast axis measurements versus back-azimuth. Right: Normalised rose diagrams of SKS fast axis directions, average SKS direction computed using the circular average (yellow) and the one obtained by stacking misfit surfaces from individual SKS splitting solution (red).

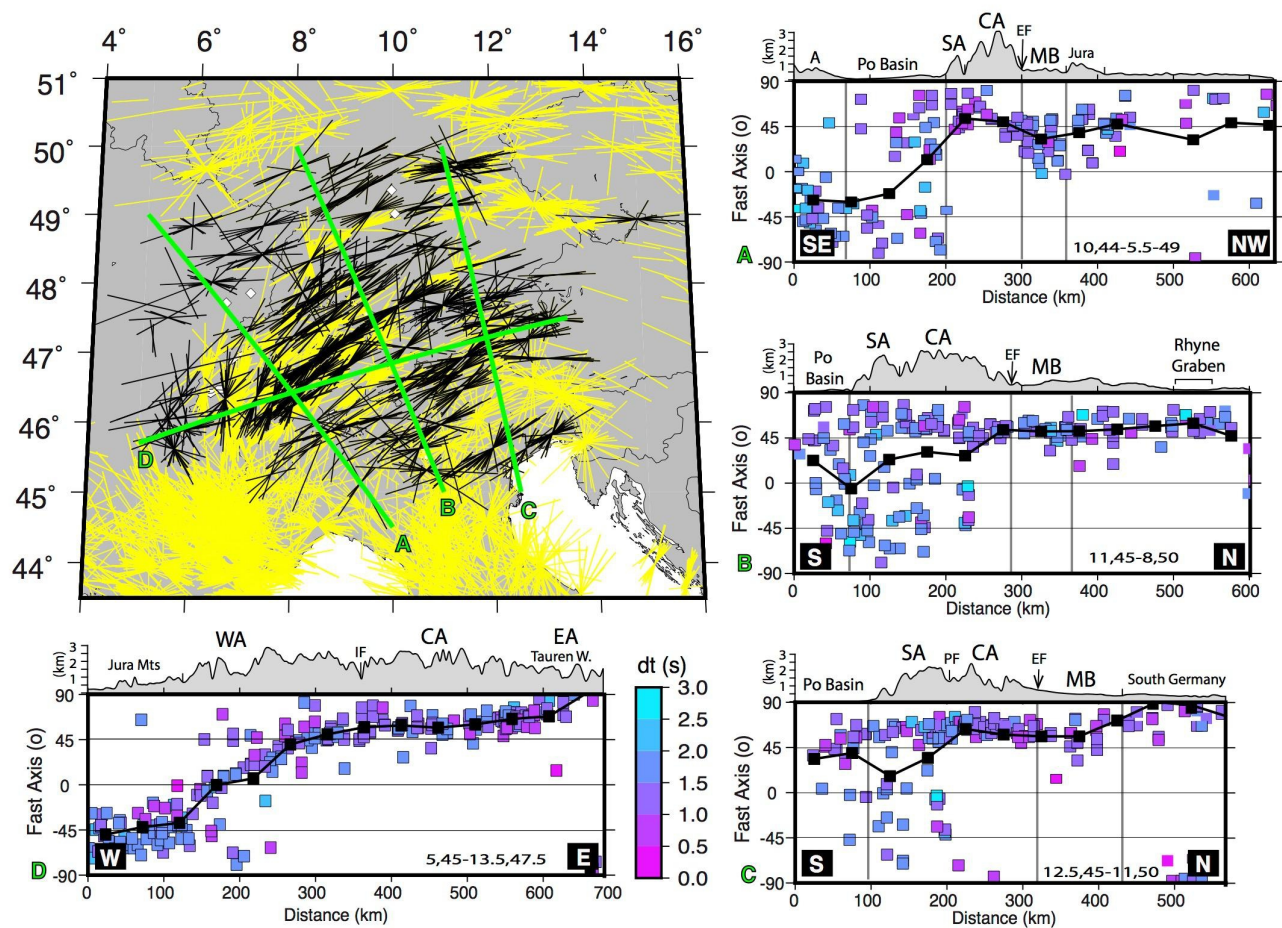
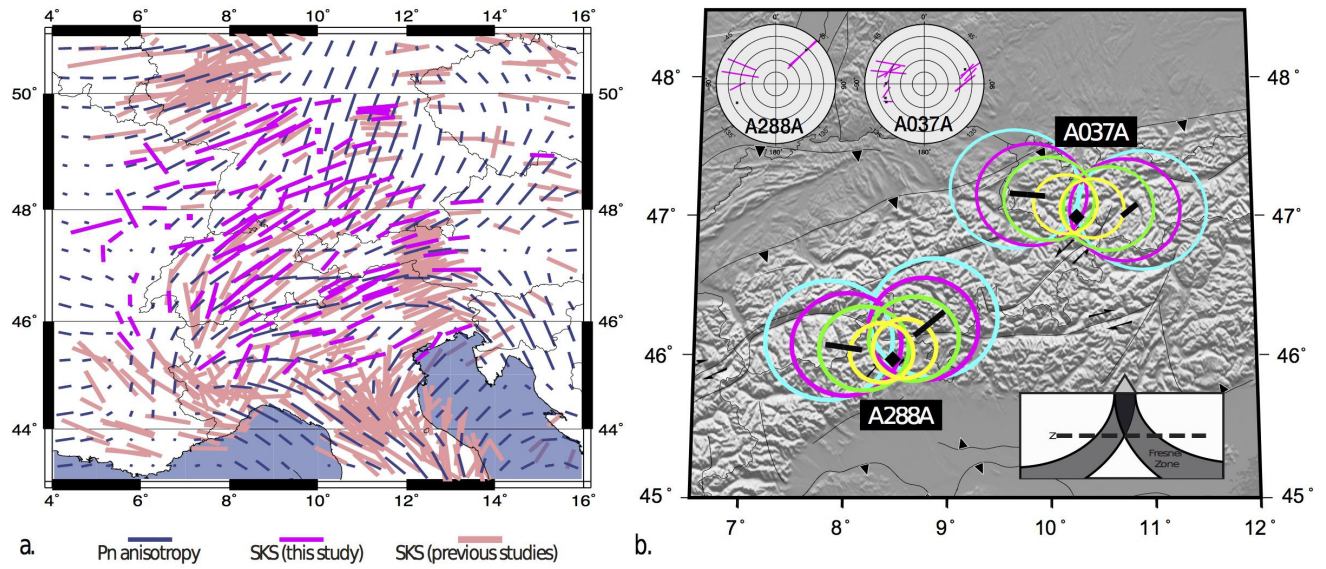


Figure 5: Sections of SKS splitting parameters across and along the Alpine orogen. Top left: Map of western and central Europe showing past SKS results (yellow lines) and observations from this study (black lines). The green lines mark the location of chosen sections. Left and bottom: Sections across and nearly along the orogen showing single-station SKS fast axes direction variation within  $\pm 50$  km distance from the section. On top of each section topography is reported and the location of major geological units: SA (Southern Alps), CA (Central Alps), WA (Western Alps), PF (Periadriatic Fault), IF (Insubric Fault), AF (Alpine Front). Black squares are average  $\phi$  direction along the profile in 50 km distance intervals.

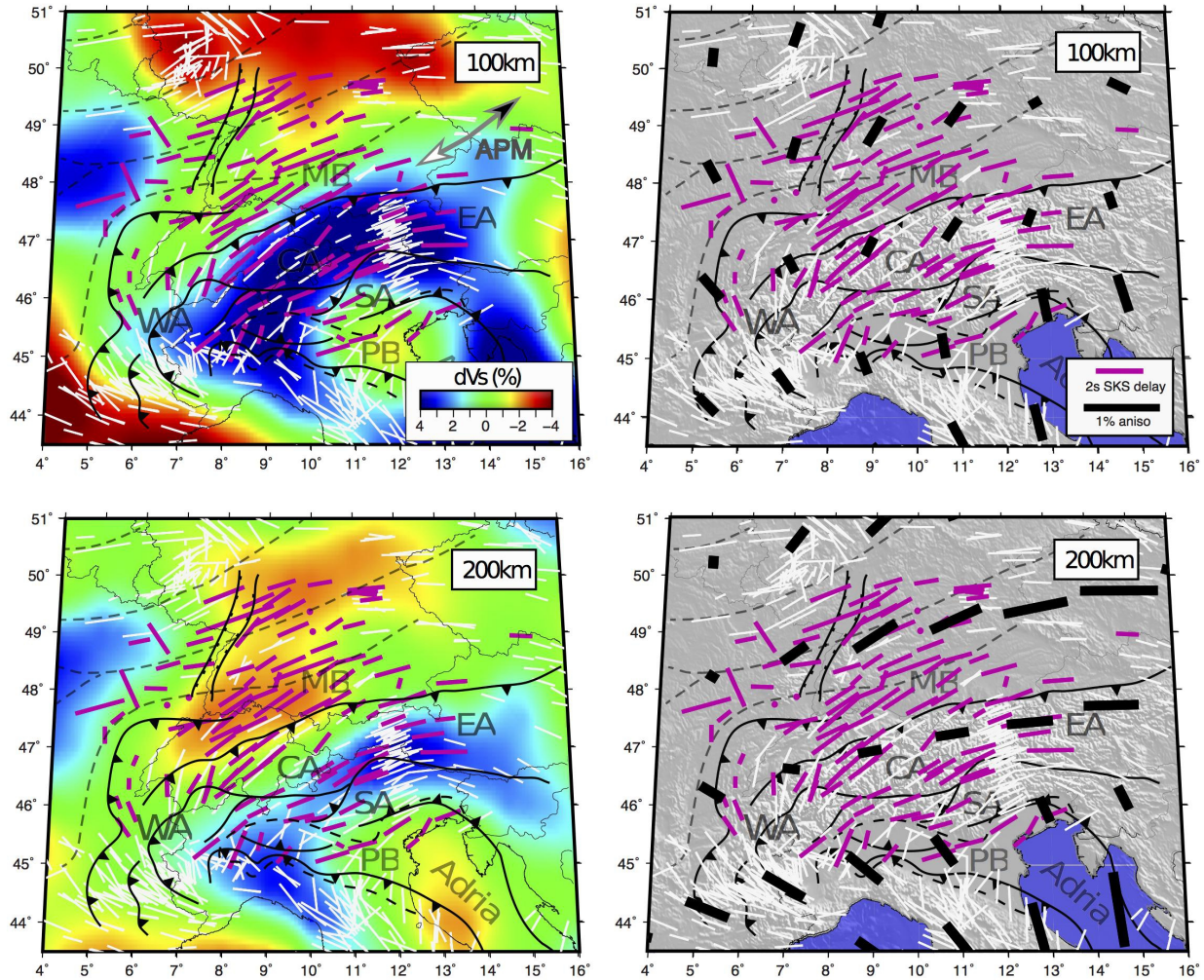
675

680





685 Figure 6: a. Comparison between our SKS measurements (red bars), Pn anisotropy axes (Diaz et al., 2012, and references therein),  
 and previous SKS measurements . b. Single station Fresnel analysis of SKS observations at two AlpArray seismic stations from  
 two earthquakes from opposing directions. Coloured circles show the approximate Fresnel zone for the SKS wave at different  
 690 depths: 50 km (yellow), 100 km (green), 150 km (magenta), and 200 km (cyan). Black lines show the SKS fast axis direction  
 projected at its 150 km piercing point. Top left insets: polar plots for all measurements available for the two stations. Bottom right  
 inset: cross-section of the Fresnel zones of two incoming SKS waves from opposing directions and the depth where these zones  
 overlap (after Alsina and Snieder, 1995).

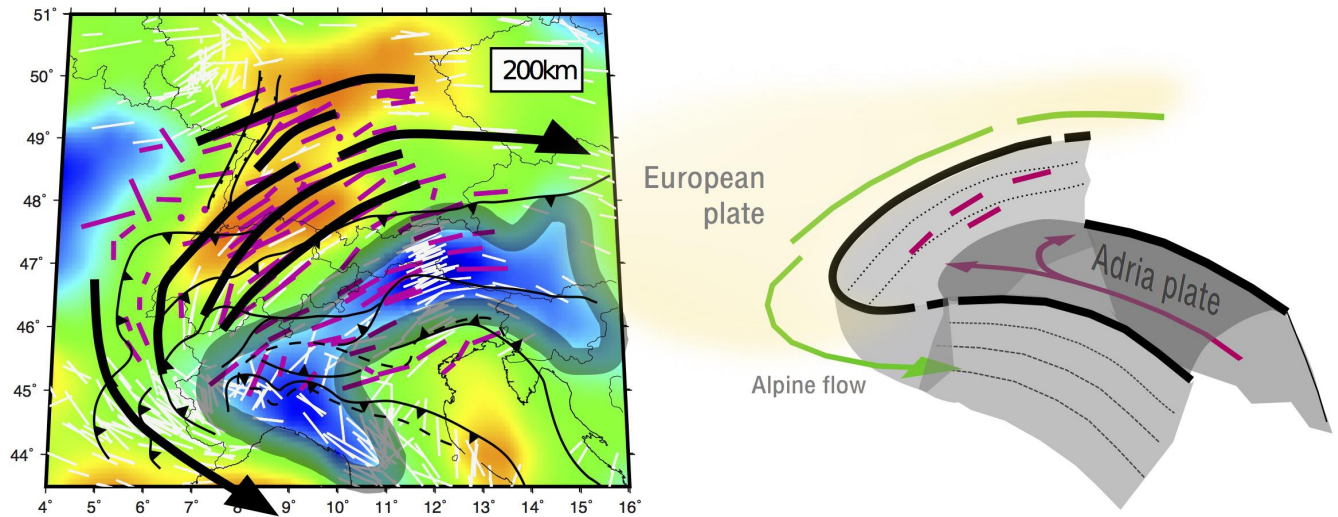


695

figure 7: On the left, the comparison of SKS results with the seismic tomography model of Zhu et al. (2015) at 100 km (top) and 200 km (bottom). Magenta lines are SKS fast axes and delay times obtained in this study, while white bars are previous measurements (Salimbeni et al., 2008, 2013; Barruol et al., 2011; Kummerow et al., 2006; Bokelmann et al., 2013; Qorbani et al., 2016). In the 100 km slice map, also APM is reported: the black head arrow represents the EU plate motion in NNR system for GSRMv2.1, ITRF2014[2016] and HS3-NUVEL1A; white head arrow is again the EU plate motion direction in the Hot Spot reference system valid for HS3-Nuvel1 (Kreemer et al., 2014; Altamini et al., 2016, Grip and Gordon, 2002). On the right, the comparison of SKS results from this study and previous measurements with azimuthal anisotropy percentages (black bars) estimated by Zhu et al. (2015) at 100 km (top) and 200 km (bottom), respectively.

700

705



**Figure 8: Left: Seismic tomography model of the Alpine region at 200 km depth from Zhu et al. (2015) with overlain SKS measurements (white - previous studies, pink - this study). Black arrows are the authors' interpretation of a possible mantle flow around the barrier slabs (outlined with a thick grey line). Right: Sketch of possible mantle flow patterns based on our SKS measurements indicating the possible barrier effect of the Alpine and Adria slabs. .**