

Relationship between microstructures and resistance in mafic assemblages that deform and transform.

Nicolas Mansard^{1,*}, Holger Stünitz^{1,2}, Hugues Raimbourg¹, Jacques Précigout¹, Alexis Plunder³ and Lucille Nègre¹

5

¹ Institut des Sciences de la Terre d'Orléans (ISTO), UMR 7327, CNRS/BRGM, Université d'Orléans, 45071 Orléans, France

² Department of Geology, University of Tromsø, Dramsveien 201, 9037 Tromsø, Norway

³ BRGM, F-45060, Orléans, France

*Correspondence to: Nicolas Mansard (nmansard@outlook.fr)

10 E-mail addresses: nmansard@outlook.fr (N. Mansard), holger.stunitz@uit.no (H. Stünitz), hugues.raimbourg@univ-orleans.fr (H. Raimbourg), jacques.precigout@univ-orleans.fr (J. Précigout), a.plunder@brgm.fr (A. Plunder), lucille.negre@univ-orleans.fr (L. Nègre).

Abstract.

Syn-kinematic mineral reactions play an important role for the mechanical properties of polymineralic rocks. Mineral reactions
15 (i.e. nucleation of new phases) may lead to grain size reduction producing fine-grained polymineralic mixtures, which have a strongly reduced viscosity because of the activation of grain-size sensitive deformation processes. In order to study the effect of deformation-reaction feedback(s) on sample strength, we performed rock deformation experiments on “wet” assemblages of mafic compositions in a Griggs-type solid-medium deformation apparatus. Shear strain was applied at constant strain rate
20 (10^{-5} s^{-1}) and constant confining pressure (1 GPa) with temperatures ranging from 800 to 900 °C. At low shear strain, the assemblages that react faster are significantly weaker than the ones that react more slowly, demonstrating that reaction progress has a first-order control on rock strength. With increasing strain, we document two contrasting microstructural scenarios: (1) the development of a single through-going high-strain-zone of well-mixed, fine-grained aggregates, associated with a significant weakening after peak stress and (2) the development of partially connected, nearly monomineralic shear bands without major weakening. The lack of weakening is caused by the absence of interconnected well-mixed aggregates of fine-
25 grained reaction products. The nature of the reaction products, and hence the intensity of the mechanical weakening, is controlled by the microstructures of the reaction products to a large extent, e.g., the amount of amphibole and the phase distribution of reaction products. The samples with the largest amount of amphibole exhibit a larger grain size and show less weakening. In addition to their implications for the deformation of natural shear zones, our findings demonstrate that the feedback between deformation and mineral reactions can lead to large differences in mechanical strength, even at relatively
30 small initial differences in mineral composition.

1 Introduction

Mafic rocks constitute a large part of the oceanic crust and may be one of the main components of the lower continental crust (Rudnick and Fountain, 1995). The major constituents of mafic rocks, i.e., pyroxene and plagioclase, are mechanically strong minerals that show crystal plastic deformation only at high temperatures in natural systems (e.g., Rutter and Brodie, 1985; Brodie and Rutter, 1985, 1992). However, there are abundant examples of strongly deformed mafic rocks, even at relatively low temperatures, but invariably these rocks show metamorphic retrogression (Rutter and Brodie, 1985). For instance, concomitant deformation and metamorphism are observed along oceanic detachments, where deep levels of the oceanic mafic crust are exhumed (Harigane et al., 2008; Schroeder and John, 2004). Strongly sheared meta-gabbros are also present in exhumed subduction belts (Imon et al., 2004; Shelley, 1994; Soret et al., 2019) or in large-scale transcurrent shear zones (Jolivet and Miyashita, 1985; Shelley, 1994). In most cases, the decreasing temperature conditions during deformation result in coeval mineral reactions, often causing strong grain size reduction. The coupling between deformation and reaction is therefore essential to understand the process of strain localization, as observed in mafic mylonites (Brodie et al., 1992).

The pyroxenes typically deform by crystal plasticity at high temperatures and high stresses (e.g., Borg and Handin, 1966; Coe, 1970; Coe and Kirby, 1975; Bystricky and Mackwell, 2001; Bystricky et al., 2016). Mechanical data from high-temperature deformation experiments of mafic rocks are relatively scarce (e.g., Dimanov et al., 2003, 2007; Dimanov and Dresen, 2005; Marti et al., 2017, 2018; Mansard et al., 2020), but the existing studies indicate that weakening processes are dependent on the “deformation history”. The study of mylonitic deformation of natural mafic rocks provides insights, at small scale, into the deformation mechanisms and strain localization processes and, at large-scale, into the strength of the lower crust (e.g., Rutter and Brodie, 1992; Kanagawa et al., 2008). There are two main mechanisms of rock deformation in the viscous deformation regime: (1) Dislocation creep (crystal plasticity; e.g., Paterson, 2013), and (2) Diffusion creep. The latter includes grain-scale diffusion creep, where diffusive mass transfer either occurs through the volume or phase boundaries of individual grains (e.g., Wheeler, 1992) and is the main strain producing process, and diffusion accommodated grain boundary sliding (GBS), where diffusive mass transfer adjusts grain shapes and asperities during cohesive, frictionless sliding (e.g., Ashby and Verrall, 1973; Paterson, 1991; Langdon, 2006; and references therein). If a fluid is involved and material is dissolved and re-precipitated, the process is often referred to as dissolution-precipitation creep (DPC). Grain boundary sliding and diffusive mass transfer are both always involved, so that the term diffusion creep or DPC are collective terms involving GBS and diffusive mass transfer. Diffusion creep is a grain-size sensitive (GSS) deformation mechanism and may operate at low or high temperature, as well as typically at low stresses (e.g., Paterson, 1995).

Many workers have pointed out the close relationship between strain or reaction-dependent grain size reduction and the activation of GSS creep in a variety of mafic assemblages (e.g., Kruse and Stünitz, 1999; Kenkmann and Dresen, 2002; Baratoux et al., 2005; Kanagawa et al., 2008; Mehl and Hirth, 2008; Menegon et al., 2015; Okudaira et al., 2015; Degli Alessandrini et al., 2017). For this reason, grain size reduction is recognized as one of the most significant mechanisms that control rheological properties (e.g., Elyaszadeh et al., 2018; Brodie and Rutter, 1987; Bercovici and Ricard, 2012; Montési,

65 2013, Platt, 2015). Grain-size-controlling processes usually include dynamic recrystallization (e.g., Schmid, 1982; Brodie and
Rutter, 1987; Behrmann, 1985; Fliervoet and White, 1995; Vissers et al., 1997) and/or metamorphic reactions (e.g., Rubie,
1983; Fitz Gerald and Stünitz, 1993; Stünitz and Fitz Gerald, 1993; Newman et al., 1999), but while dynamic recrystallization
is only considered to have a transient mechanical effects (Brodie and Rutter, 1987), a small grain size can be stabilized by new
70 1988; Fliervoet et al., 1997; Herwegh et al., 2011; Herwegh and Berger, 2004). Furthermore, phase separation and
compositional layering commonly form or develop during crystal plastic deformation (dislocation creep) of minerals. During
metamorphic reactions and nucleation of new phases, minerals are spatially re-arranged, so that fine-grained mixed-phase
zones and polyphase shear bands may develop (e.g., Stünitz and Tullis, 2001; De Ronde et al., 2004, 2005; Kilian et al., 2011;
Platt, 2015; Mansard et al., 2018, 2020). Such a spatial re-arrangement controls the bulk strength of the rock, particularly when
75 these phases have a large mechanical contrast. In particular, the interconnection of weak materials is necessary to induce a
significant drop of bulk strength (e.g., Jordan, 1988; Handy, 1994; Dell'Angelo and Tullis, 1996; Holyoke and Tullis, 2006a,
b).

The principal objective of this contribution is to study the effect of initial rock composition on the feedback processes
between reaction and deformation. To do so, we have performed rock deformation experiments on “wet” assemblages of
80 plagioclase-pyroxene assemblages in a Griggs-type solid-medium deformation apparatus. As representative of the lower crust,
the starting material was composed of plagioclase (labradorite; plag) and either Mg-rich orthopyroxene (opx) (from peridotite)
or Fe-rich opx (from a granulite-facies anorthosite) in order to investigate the effect of different mineral compositions on rock
deformation. In this system, the opx deformation properties are assumed to be the same for Mg- and Fe-rich opx. We also
performed deformation experiments on amphibole (amph) + plag and pure amph assemblages at similar conditions to extend
85 the study to typical amphibolite facies conditions. All these assemblages were deformed to varying amount of strain, including
at the early stages of deformation. These early stages can be challenging to access when studying natural cases because of
successive overprints of deformation stages. In this contribution, we suggest that viscous strain localization is primarily
dependent on the ability of minerals to react, and that the feedback between deformation and mineral reactions can lead to
large differences in mechanical strength and deformation processes.

90 **2 Methods**

2.1 Experimental procedures

2.1.1 Starting material and sample preparation

We have performed a series of shear deformation experiments in two Griggs-type deformation apparatus at the
University of Tromsø (Norway) and at the University of Orléans (France). Experiments were conducted on mineral powders
95 separated from natural materials. Four different starting materials were prepared from different mineral sources: (1) Gem-

quality labradorite ($An_{60}-Ab_{38}-Or_2$) from Sonora (Mexico) mixed with orthopyroxene ($Wo_1-En_{88}-Fs_{11}$) from Damaping peridot (China) and here referred to as Mg-opx; (2) Labradorite ($An_{55}-Ab_{44}-Or_1$) mixed with orthopyroxene ($Wo_2-En_{62}-Fs_{36}$) from Hidaka granulite (Japan) and here referred to as Fe-opx; (3) Amphibole (Mg-rich hornblende; composition available in Table 1) from the Massif Central (France) mixed with Sonora labradorite; and (4) Pure Mg-rich hornblende. The pre-separated minerals were crushed in an alumina mortar, then sieved to $<100\ \mu\text{m}$ and handpicked, and finally sorted in a distilled water column to obtain grain sizes between 10–20 μm . Powders were mixed in a 50:50 vol.% ratio in acetone using an ultrasonic stirrer to avoid density/grain size separation (De Ronde et al., 2004, 2005).

To perform experiments, we used a conventional solid-salt, non-coaxial (“general shear”) sample assembly with alumina pistons (Précigout et al., 2018). After adding 0.1 wt.% of distilled H_2O , the powder was placed between alumina forcing blocks along a 45° pre-cut, so that a shear zone of $\sim 1\ \text{mm}$ thick is formed when the deformation experiment starts (Fig. 1). The assembly was wrapped into a nickel foil of 25 μm thick, and then inserted into a weld-sealed platinum jacket. NaCl pieces were used as solid confining medium for both, the inner and outer furnace assembly. The temperature was measured by S-type (Pt/Pt-Rh) thermocouples centered on the sample. Readers are invited to refer to Pec et al. (2012) and Précigout et al. (2018) for further details and descriptions of sample assemblies and experimental protocols employed.

110

2.1.2 Experiments and mechanical data processing

Deformation experiments were conducted at constant shear strain rate of $\sim 2 \times 10^{-5}\ \text{s}^{-1}$ to varying amounts of shear strain (see Table 2 for a summary of experimental conditions), at temperatures of 800, 850 and 900 $^\circ\text{C}$, and at confining pressure of 1 GPa. To bring the samples to the desired pressure-temperature (P-T) conditions, both the σ_1 and σ_3 pistons are advanced alternately between steps of increasing temperature. At the desired P-T conditions, a period of hydrostatic hot-pressing was applied and the deformation is started by advancing the σ_1 piston first through the lead piece (“lead run-in”) to bring it into contact with the upper forcing block (hit point). During the “lead run-in” stage, the sample is maintained in a more or less isostatic stress state, as the lead protects the sample from becoming deformed. Two series of experiments on Mg-rich opx-bearing assemblages have been performed, one series with a short “run-in” period and a second one with a longer period (Table 2).

120

At the end of experiments, samples were quenched to 200 $^\circ\text{C}$ within 2 to 3 minutes (~ 150 to 300 $^\circ\text{C}/\text{min}$), so that the deformation microstructures and grain size are preserved. Subsequently, the force and confining pressure are decreased simultaneously to room pressure and temperature conditions. During initial stages of the decompression, the differential stress is kept above the confining pressure (~ 100 to 200 MPa) to reduce the formation of unloading cracks.

125

Experimental data were acquired and recorded using catman® Easy, and then processed after the experiment with a MATLAB-based program following the “rig” program of Matej Pec (Pec et al., 2016) available at <https://sites.google.com/site/jacquesprecigout/telechargements-downloads>. The hit point is defined by intersecting the run-in and loading curve tangent lines. After this point, several corrections are then applied to consider the rig distortion and changes

of thickness and surface due to the sample compaction and piston overlap, respectively. The corrected mechanical data are
130 represented in stress vs. strain graphs from the hit-point.

2.2 Analytical methods

Double-polished thick sections (~150–200 μm) of the starting materials were prepared for FTIR analysis. Thick
sections were prepared from mineral powders for the Mg-rich opx + plag sample and from a natural section of mylonite for
135 the Fe-rich opx + plag sample. For each sample, only grains larger than 100 μm were used for FTIR analysis. Infrared
absorption spectra were collected for Mg-opx, Fe-opx and plag using a Nicolet 6700 FTIR instrument at the ISTO (Orléans,
France); 128 scans were acquired for each spectrum at a resolution of 4 cm^{-1} with spot size of $40 \times 40 \mu\text{m}^2$. Only grain interiors
were analyzed by FTIR. The integrated areas of the absorption bands measured between 3750 cm^{-1} and 3000 cm^{-1} were used
to calculate the H_2O contents using the calibration of Bell et al. (1995) for opx and of Johnson and Rossmann (2003) for plag.

140 After the experiments, samples were cut parallel to the shear direction and impregnated under vacuum with low-
viscosity epoxy to prepare thin sections. Sample microstructures were analyzed using a scanning electron microscope (SEM –
TESCAN MIRA 3 XMU) at ISTO-BRGM (Orléans, France). All SEM analyses have been performed on carbon-coated (20
nm thickness) thin sections at 12–15 KV and a working distance of ~8 mm. Mineral compositions were collected using a
CAMECA SX Five electron microprobe analyzer (EPMA) at ISTO-BRGM (Orléans, France). We adopted the following
145 analytical condition: an acceleration voltage of 12–15 kV, a beam current of ~6 nA and a beam diameter of ~1 μm .

Thin sections were additionally polished with colloidal silica, and then coated with a thin carbon coat of ~2 nm thick
for Electron backscatter diffraction (EBSD) analysis. The EBSD analyzes were carried out using an EDAX PEGASUS
EDS/EBSD system and the OIM DC 6.4 software (manufacturer EDAX, Mahwah—USA) at ISTO-BRGM (Orléans, France).
The operating conditions involved an accelerating voltage of 20–25 kV and a working distance of 15–18 mm. Post-acquisition
150 treatments, which include plotting equal-area lower-hemisphere pole figures of amphibole lattice preferred orientation (LPO),
were performed using the open-source MTEX toolbox for Matlab. For the definition of a grain, 5 adjacent indexed points were
required. Texture strength is expressed through the J-index and M-index (Bunge, 1982; Skemer et al., 2005).

2.3 Microstructural analysis

155 The SEM back scattered electron (BSE) images were used to produce manually digitized grain maps. Grain sizes
were measured from these grain maps by using the public domain software ImageJ (<http://rsb.info.nih.gov/ij/>). By extracting
the area equivalent diameter from these maps, the grain size is defined as the diameter of equivalent circular diameter ($d_{\text{equ}} =$
 $2 \times \sqrt{\frac{\text{area}}{\pi}}$). From these grain maps, the grain shape preferred orientations (SPO) and the modal proportion of phases can be

analyzed. In the case where grain boundaries are indistinguishable within amphibole aggregates, EBSD maps have been
160 processed with MTEX to determine the grain size.

In order to estimate the proportion of phases we used SEM/BSE images to produce manually digitized grain maps
with the illustrator software, when it was possible to distinguish the grain boundaries (e.g. Fe-rich opx + plag assemblages).
From these phase maps we could separate the phases with the ImageJ software and estimate their proportion. This is how the
amount of amphibole in the Fe-rich opx + plag assemblages is estimated. When it was impossible to distinguish the grains
165 individually, we drew areas that corresponded either to a set of grains of the same phase or to several phases that could not be
separated. Some grains are too small to be separated with enough confidence from other grains. For this reason, we have
included all reaction products together, and have not separated the amphibole from the plagioclase² and the pyroxene² in the
Mg-rich opx + plag assemblages.

170 **3 Results**

3.1 Mechanical data

Depending on the starting material, the mechanical data differ significantly with respect to each other (Fig. 2). At 850
and 900 °C, the Mg-rich opx + plag samples (Fig. 2b-c) are characterized by a pronounced peak stress at shear strains of less
than $\gamma \sim 1$, whereas the Fe-rich opx + plag ones do not show a pronounced peak stress, but a steady-state flow after yield or, at
175 900 °C, a constant strain hardening behavior (Fig. 2d). At 800 °C, the peak stresses of all opx + plag samples are above the
Goetze criterion ($\Delta\sigma \leq P_{\text{cont}}$), which provides an empirical upper limit for viscous creep. Above this limit, samples are expected
to deform by brittle mechanisms (Kohlstedt et al., 1995). The abrupt stress drop of Fe-rich opx + plag samples at 800 °C and
short run-in samples at 800 and 850 °C indicates that slip has occurred at the interface between the sample and one forcing
block (Fig. 2b, d; 557NM, 559NM, and 538NM). The slip is confirmed by sample microstructures and suggests that peak
180 stress might have been higher without the slip event. In contrast, two Mg-rich opx + plag samples at 900 °C show a pronounced
strain weakening after peak stress. In one case, the sample falls substantially below the Goetze criterion as a result of slip along
the forcing block interface and stabilizes around 800 MPa (OR49NM). In the other case, the sample weakens continuously
after peak stress and reaches almost steady-state for $\gamma \sim 6.5$ (OR41NM). One way to vary the time of reaction in different
experiments is to keep the sample at hydrostatic conditions at given pressure and temperature before starting to deform it (long
185 or short run-in periods of the piston). In the experiments with longer run-in periods, the Mg-rich opx + plag assemblages
weaken systematically after peak stress. They reach stresses lower than 400 MPa at 850 °C and 900 °C, corresponding to ~64%
(OR38NM) and ~78% (OR34NM) of the peak stress before reaching a quasi-steady-state shear stress near $\gamma \sim 6.5$ for OR34NM
and $\gamma \sim 7.7$ for OR38NM; Fig. 2c). At 850 °C, the Fe-rich opx + plag sample behavior is no longer comparable to those of the
mixed Mg-rich assemblages, as no weakening occurs after peak stress and a quasi-steady-state shear stress is reached at low

190 shear strain ($\gamma \sim 2$). At 900 °C, the sample remains weak, but hardens continuously until $\gamma \sim 5$, unlike the other experiments (Fig. 2d).

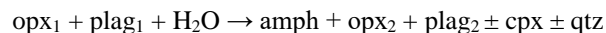
Compared to the opx + plag assemblages, the amph + plag and pure amph assemblages do not reach the same strength, regardless of the deformation temperature (Fig. 2e). At 800 °C, the amph + plag assemblage reaches a peak stress of ~563 MPa, and then slightly weakens to ~483 MPa at $\gamma \sim 5.8$. The pure amph assemblages deformed at 800 and 900 °C show stress-strain
195 curves with a significant weakening after peak stress at $\gamma \sim 0.5$ to 1.0. However, the sample at 800 °C documents a peak stress of ~450 MPa higher than the sample deformed at 900 °C.

Our set of experiments reveals two distinct types of mechanical behavior: one that shows a pronounced weakening after high peak stress (Mg-rich opx + plag and pure amph assemblages) and one without weakening (Fe-rich opx + plag and amph + plag assemblages) or even hardening (Fe-rich sample at 900 °C, 532NM; Fig. 2d), but deform at considerably lower
200 stresses (all Fe-rich samples; Fig. 2d).

3.2 Mineral reactions and microstructures

Mineral reactions occur pervasively in deformed portions of the samples - there is a clear correlation between strain and reaction progress (cf. Mansard et al., 2020). The pervasive occurrence of mineral reactions induces substantial changes in
205 grain size and spatial distribution of phases. This is particularly prominent in the development of shear bands within the deformed assemblages. For the sake of clarity, the term “bulk shear zone” refers to the whole sample deformed between the two alumina forcing blocks, while the term “shear bands” refers to a localized zone of variable thickness of high shear strain accommodation within the bulk shear zone. In addition, the term “high-strain zone” is also used to refer to domain of coalescence of fine-grained shear bands that are connected as a more or less single zone through the bulk shear zone.

In the two main systems studied, the Fe-rich and Mg-rich opx + plag assemblages, the opx deformation features are the same. In these deformed assemblages, similar reaction products are observed, with the formation of amphibole, pyroxene, plagioclase and, to a minor extent, quartz:



In these assemblages the mineral compositions were analyzed if the grain size was sufficiently large, because in
215 mixture zones, individual grains are typically too small to be analyzed. Thus, the very small grain size precludes an exact compositional analysis of the actual reaction products.

The Mg-rich opx + plag assemblages deformed to high shear strain are characterized by the development of low-strain zones and a high-strain zone in the center of the bulk shear zone (Fig. 3a). Mineral reactions are localized within this single connected zone that traverses the sample from one interface of the forcing block to the other (at 850 °C; Fig. 3a) as fine-grained mixed zones and C-geometry shear bands subparallel to the shear plane (or forcing block interface; Fig. 4a-to-c, 5a-to-f). The C-type shear bands are mainly composed of fine opx_2 , plag_2 and amph that are present as equant grains where their identification is possible by EDS analysis in the SEM (Fig. 4). The original large grains of plag_1 and opx_1 form porphyroclasts
220

embedded in a mixture of reaction products (Fig. 3a). In contrast to the high strain zone, the reaction products in the low-strain zones usually occur as coronas or rims surrounding opx_1 clasts (Fig. 4d-e). The main difference between the assemblages deformed at 850 °C and 900 °C is the degree of strain localization. At 850 °C, strain is highly localized in a ~250–300 μm wide single zone, while strain is more distributed throughout the sample at 900 °C, and therefore local strain appears lower. Otherwise, the microstructural features are similar to those of the high strain zone (Fig. 4f-g).

At the scale of the bulk shear zone, both the Fe-rich $\text{opx} + \text{plag}$ and $\text{amph} + \text{plag}$ assemblages are banded and show a locally developed, non-connected mylonitic foliation characterized by the development of amph -rich shear bands and tails at opx_1 -porphyroclasts (Fig. 3b-c). These bands wrap around the original and large opx_1 -porphyroclasts in Fe-rich $\text{opx} + \text{plag}$ assemblages (Fig. 3b) and in $\text{amph} + \text{plag}$ assemblages (Fig. 3c). The reaction products in shear bands alternate with aggregates of original grains. The mylonitic foliation is better defined in the $\text{amph} + \text{plag}$ assemblage because of more pervasive deformation and strain localization (Fig. 3c). The shear bands are more heterogeneously distributed in the Fe-rich $\text{opx} + \text{plag}$ assemblage deformed at 850 °C (Fig. 3b). This results in the development of an anastomosing network of amph -rich shear bands that are less connected (Fig. 3b), without forming any through-going high-strain zone (Fig. 3a).

The reaction products in the Fe-rich $\text{opx} + \text{plag}$ assemblages contain less opx_2 than the Mg-rich $\text{opx} + \text{plag}$ assemblages, and $\text{amph} + \text{plag}_2$ are the main reaction products (Fig. 5g-to-j, 6). From site to site in the Fe-rich $\text{opx} + \text{plag}$ sample deformed at 850 °C, a variable proportion of opx and plag has reacted. Mineral reactions preferentially occur in strongly deformed areas and form only locally interconnected separate aggregates and shear bands consisting of $\text{amph} + \text{opx}_2/\text{cpx}$ or plag (Fig. 6a-b), while in less deformed areas, the reaction products typically occur as thick rims at grain boundaries of extensional sites of opx_1 and plag_1 clasts (Fig. 6c). The amph grains are elongated and typically form tails extending from opx_1 porphyroclasts (Fig. 6b, c). At 900 °C, the Fe-rich $\text{opx} + \text{plag}$ sample is more homogeneously deformed with a similar distribution of reaction products as observed at 850 °C (Fig. 6d-e).

The $\text{amph} + \text{plag}$ assemblage (Fig. 5k-l, 7a-to-c) deformed at 800 °C produced a large amount of reaction products composed of amph_2 , plag_2 , clinopyroxene (cpx), and minor zoisite (zo). There is a spatial relationship between amph and cpx, the latter occurring as small grains, predominantly around amph porphyroclasts (amph_1) mixed with small grains of new amph_2 (Fig. 7a-b). Unlike Fe-rich $\text{opx} + \text{plag}$ assemblages, the shear bands involve several phases (amph and cpx) in the $\text{amph} + \text{plag}$ assemblages (Fig. 5k-l). Regarding the pure amph assemblages deformed at 800 and 900 °C (Fig. 5m-n, 7d-e), mineral reactions are homogeneously distributed with the formation of amph_2 , cpx and minor zo, quartz (qtz) and garnet (grt). Reaction induces the development of mixture zones of amph_2 and cpx and unmixed zones of grt, zo and qtz (Fig. 5m-n). No melt was detected in the microstructures.

3.3 Chemical composition

The chemical composition of new grains is systematically different compared to that of the original ones. In each assemblage, the original plag_1 composition is An55-60. These grains are rimmed by more albite-rich plag_2 (An38-45 in Fe-

rich opx + plag samples, An 48-55 in Mg-rich opx + plag samples; Figs. 4, 5, 7, 8a-a'). The fine grains in mixed zones are also more albite-rich than the starting plag₁ (Fig. 8a-a'). For the opx₂, the ferrosilite content increases with respect to the original opx₁, regardless of the original opx₁ composition (Fig. 8b). The XMg ratio ranges between ~0.85 and ~0.89 in the Mg-rich opx₂ and between ~0.64 and ~0.68 in the Fe-rich opx₂ (with XMg = Mg/(Mg+Fe²⁺)). The newly formed cpx in the amph + plag and pure amph assemblages has an augite composition (Fig. 8b). It is worth mentioning that the composition of the main reaction products (orthopyroxene and plagioclase) in the Fe-rich opx + plag assemblages are farther away from the starting composition compared to those of the Mg-rich opx + plag assemblages.

The composition of the original amph used in both amph + plag and pure amph experiments is not constant and varies in the magnesio-hornblende field (Fig. 8c). The newly formed amph for all assemblages have a composition ranging from magnesio-hornblende to tschermakite (Fig. 8c). There are nonetheless four chemically distinct populations of new amph, depending on the composition of the starting mixture, as shown in the plot of Si vs. XMg (Fig. 8c).

3.4 OH-content and thermodynamic modeling

Fe-rich opx and plag grains from Hidaka granulite show a broad and asymmetric IR water absorption, with a maximum amplitude at ~3.580 – 3.590 cm⁻¹ (Fig. 9). The average H₂O-contents (ppm H₂O by weight), calculated between 3750 and 3000 cm⁻¹, are 451 ± 35 ppm for Fe-rich opx and 226 ± 24 ppm for plag. In contrast, there are no H₂O IR absorption bands for Mg-rich opx grains from Damaping peridotite and plag grains from Sonora (Fig. 9).

Pseudosections for the Mg-rich opx + plag and Fe-rich opx + plag assemblages were calculated for different H₂O contents in the simplified but representative system of our experiments (Na₂O-CaO-FeO-MgO-Al₂O₃-SiO₂-H₂O) using the Perple_X 6.6.8 package (Connolly, 2009) combined with the updated database of Holland and Powell. (1998) and the following solution model: amphibole (Dale et al., 2005), orthopyroxene (Powell and Holland, 1999), garnet, clinopyroxene (Holland and Powell, 1998) and feldspar (Newton et al., 1980).

At the experimental P-T conditions, plag, opx, amph, qtz, cpx and grt are expected to be stable phases in the Fe-rich opx + plag assemblage and plag, opx, amph and qtz in the Mg-rich opx + plag assemblage. The modeling of the Fe-rich opx + plag assemblage agrees rather well with the observed reaction product assemblage, whereas the modeling of the Mg-rich opx + plag assemblage does not match the observed reaction product assemblage.

3.5 Initial shear localization

In the Mg-rich opx assemblages, shear deformation is initially localized between the boundaries of original opx₁ and plag₁, where the nucleation of fine-grained tails of mixed phases that define the general shear foliation occurs (Fig. 10a). Everywhere, the new grains of opx₂ are pervasively mixed with plag₂ and amph grains (Fig. 10a). In contrast, the initial strain localization in the Fe-rich opx + plag assemblages forms predominantly amph + less opx₂ shear bands or tails extending from

290 opx₁ porphyroclasts. Amph + opx₂ nucleate at boundaries between opx₁ and plag, preferentially at extensional ends of opx₁ grains, defining σ -type tails that stay connected to the original opx₁ grains (Figs. 6b, 10b). In the samples of amph + plag starting material, the reaction products cpx + amph₂ + plag₂ + zo nucleate at the boundaries between original Amph₁ and plag₁ grains (Figs. 8a-c, 10c). Amph₂ + cpx tend to form mixed layers that surround and stay connected to amph₁ porphyroclasts (Figs. 7a, b, 10c), while plag₂ + zo form separate aggregates that tend to surround the amph₂ + cpx aggregates (Fig. 8c, 10c). Both types of reaction products organize into an anastomosing network of thin amph₂ + cpx and plag₂ + zo where layers become progressively more parallel to the shear plane (Fig. 10c).

295 To summarize, two types of reaction products and related microstructures form in the two different starting material assemblages: (1) In the Mg-rich opx + plag samples, fine-grained phase mixtures are produced by nucleation of reaction products and localize into more or less contiguous bands approximately parallel to the forcing block interface, i.e., the shear plane. (2) In the Fe-rich opx + plag and amph + plag samples, predominantly amph + opx₂ and plag₂ + zo shear bands and tails develop from opx₁-porphyroclasts and stay connected with these. While fine-grained reaction products in case (1) produce C-
300 type shear bands, the sample fabrics of case (2) develop S-C'-type shear band geometries in strongly deformed areas, the C' bands of which are formed by predominantly amph and plag₂.

3.6 Abundance and grain size of reaction products

The transition from low-strain to high-strain zones in the Mg-rich opx + plag assemblages is accompanied by a
305 significant grain size reduction (mode of the distribution as the dominant grain size) from ~15 μm to ~0.2 μm (Fig. 11a). The high-strain zones concentrate most of the reconstituted material with roughly ~65% and locally more than ~80% of reaction products. This proportion is substantially higher compared to that in the low-strain zones (~25%), where no mixed phase layers develop. Similarly, in the mixed phase reacted zones of the original pure amph assemblages, the new grains are very small (~0.6 μm) and they represent nearly ~61% of the assemblage (Fig. 11b). The amph grain size is also reduced in Fe-rich
310 opx + plag assemblages compared to the starting material (Fig. 11c), but the reaction products are not as pervasively mixed and show a grain size that is approximately one order of magnitude larger (1.9 μm) than that in the Mg-rich opx + plag samples (0.2 μm ; Fig. 11a). In the 850 °C sample, the reaction products are largely connected to opx₁ porphyroclasts, and their proportion increases with increasing proximity to higher-strained portions of the shear zone (~26%). In these Fe-rich opx + plag assemblages, amph is the main reaction product (~17%). In contrast, the amount of reaction products at 900 °C remains
315 roughly constant at approximately ~29% and there is no strain gradient. Finally, in the amph + plag starting material, the nucleation in amph-rich shear bands is more extensive (~36%) and the grain size of cpx reaction products decreases to ~1.3 μm (Fig. 11d).

3.7 Analysis of SPO and amphibole LPO

320 Amph formed during deformation of Fe-rich opx + plag assemblages exhibits a distinct SPO oriented at $\sim 30^\circ$ to the
shear direction (Fig. 12a-b). These amph aggregates occur as reaction rims around original opx₁ grains and form in strongly
deformed areas partly interconnected aggregates that define S-C' fabrics (Fig. 12c). Plag₂ and opx₂ also reveal a well-defined
SPO similarly oriented to amph. The preferred orientation of amph forms an angle of $\sim 30^\circ$ with the shear plane, slightly greater
325 than that of plagioclase and original opx (Fig. 12a-b). In addition, the amph reaction seams in high-stress sites of opx
porphyroclasts is significantly thinner compared to that in low-stress or extensional sites, indicating that amph grows
preferentially in strain shadows. In the higher strained portions of the shear zone deformed at 850 °C, the foliation defined by
amph-dominated layers rotates and is now well oriented sub-parallel to the boundaries of C' shear bands or the shear plane
(Fig. 12c). Within these shear bands, amph grains show a moderate LPO with [001] axes aligned subparallel to the boundaries
of C' shear bands and poles (100) normal to the shear plane (Fig. 12c-d). In the mixed zones of Mg-rich opx + plag samples,
330 the fine grains are characterized by equant grain shapes with an aspect ratio of 1.23 (Fig. 13), and a weak preferred orientation
either parallel or at 45° to the shear plane (Fig. 13).

4 Discussion

4.1 Nucleation, grain size reduction and phase mixing

In this study, the deformation of two-phase assemblages is accompanied by the nucleation of new grains with 1)
335 systematic difference in composition between new grains and parent grains (Fig. 8), 2) significant grain size reduction (Fig.
11) and 3) a new spatial arrangement of reaction products into fine-grained, more or less mixed phase zones (Fig. 5). Based
on these observations, we infer that grain size reduction and phase mixing both result from the nucleation of new phases (e.g.,
Kruse and Stünitz, 1999; Kenkmann and Dresen, 2002; Kilian et al., 2011; Linckens et al., 2015; Platt, 2015; Précigout and
Stünitz, 2016; Mansard et al., 2018). Despite common features, our samples have developed two sets of microstructures,
340 distinguished mainly by the size and spatial arrangement of reaction products and the degree of phase mixing. We discuss
these differences below.

In the Mg-rich opx + plag assemblages, a strain gradient is clearly observed and expressed by the development of
low- and high-strain zones (Fig. 3a, 4). This is particularly notable in the sample deformed at 850 °C. The transition from low-
to high-strain zone is accompanied by drastic grain size reduction and increase in reaction products within localized mixed
345 zones by a factor of more than 2 (Fig. 11a). The grain size of reaction products in the mixed high-strain zones ($\sim 0.2 \mu\text{m}$) is
about two orders of magnitude smaller than the opx grain size of the starting material and the low strain regions ($\sim 10\text{-}20 \mu\text{m}$;
Fig. 11a). Similarly, an extensive nucleation of reaction products within mixed-phase zones is documented in the pure amph
starting material (Fig. 7d-e). The reaction products are also very small, far below one micron ($\sim 0.6 \mu\text{m}$; Fig. 11b). As
documented in Mansard et al. (2020), such a correlation between deformation, mineral reactions and related grain size

350 reduction in Mg-rich assemblages has been also observed in experimentally deformed fine-grained gneiss (Holyoke and Tullis, 2006 a, b), plagioclase + olivine samples (De Ronde et al., 2005; 2007), and plagioclase + pyroxene samples (Marti et al., 2018).

In the Fe-rich opx + plag assemblages, amph is by far the more abundant product, and there is less phase mixing (Fig. 5g-j). The reaction products consist mainly of thick rims around the opx₁ (Fig. 6c) or as amph-dominated tails and shear bands
355 (Fig. 6a-b). The abundance of reaction products increases with increasing proximity to strongly deformed portions of the shear zone. The reaction products have a grain size about one order of magnitude smaller than the starting material (~1.9 μm), but one order of magnitude larger than the mixed reaction products in the Mg-rich opx + plag assemblages (Fig. 11). Similarly to the Fe-rich opx + plag assemblages, amph-rich shear bands have developed in the amph + plag assemblages (Fig. 7a-c), and the grain size, reduced by about one order of magnitude compared to the starting material, is one order of magnitude larger
360 than in the mixed zones in the Mg-rich opx + plag assemblages (Fig. 11).

Two types of major microstructures can be distinguished: (1) in one case, intense grain size reduction by 2 orders of magnitude is produced by nucleation of reaction products in pervasive and layered phase mixtures (Mg-rich opx + plag and pure amph starting materials); (2) in the other case, the reaction products are less pervasively mixed and develop aggregates that are dominated by amph extending from opx-porphyroclasts. These aggregates have a grain size of one order of magnitude
365 larger than (1) and may form C' shear bands or tails connected to opx porphyroclasts.

4.2 Deformation processes

As the reaction products in Mg-rich opx + plag samples occur in pervasively mixed high-strain zones and layers with equant grains of a size far below one micron, the dominant deformation mechanism is inferred to be one of grain size sensitive creep. The absence of well-developed layering of separate phases and absence of strong elongation of individual grains during
370 GSS creep suggests that grain boundary sliding makes the dominant kinematic contribution to the finite strain ("Rachinger sliding"; e.g., Langdon, 2006). Such a deformation mechanism should probably be termed "diffusion-accommodated grain boundary sliding" (GBS) or, more general, as a fluid has been present and solution precipitation is the probable transfer mechanism, "dissolution precipitation creep" (DPC). The pronounced weakening of the samples in combination with localization of strain made strain rate stepping tests problematic in our samples, so that the deformation mechanism is primarily
375 identified based on microstructures. At first, the microstructures are similar to other cases where such deformation mechanisms have been identified (e.g., Marti et al., 2017, 2018; De Ronde et al., 2005; Stünitz and Tullis, 2001; Holyoke and Tullis, 2006a, b; Tasaka et al., 2016, 2017; Getsinger and Hirth, 2014). The transition from low- to high-strain zones in the Mg-rich opx + plag assemblages marks the transition from a two-phase aggregate with strong phases (starting material) potentially deforming by dislocation creep to a material deforming by grain size sensitive mechanisms, including DPC and/or GBS (e.g., Boullier
380 and Gueguen, 1975; Kerrich et al., 1980; Schmid, 1982; Brodie and Rutter, 1987; Kilian et al., 2011), where samples deform by low bulk stresses (Fig. 2).

The spatial arrangement of mineral phases in mixed aggregates by nucleation impedes grain growth (e.g., Olgaard and Evans, 1986, 1988). As documented by Mansard et al. (2020), the mixing of mineral phases is homogeneous and starts from peak stress, in favor of GBS accommodated by DPC (e.g., Fliervoet et al., 1997; Kilian et al., 2011; Linckens et al., 2011; 385 2015). The original plag_1 almost completely disappeared in the high-strain zones of Mg-rich samples, while the original opx_1 remain as small clasts embedded in fine-grained mixed zones (Figs. 3a, 4a-to-c). Although the opx_1 is still present, its proportion, aspect ratio and size decrease compared to that in the low-strain zones (Fig. 4). These microstructures suggest that opx_1 grains act as rigid particles affected by dissolution and together with plag_1 , represent a source of elements required for the development of the ductile fine-grained zone deformed by diffusion-accommodated GBS.

390 In the Fe-rich $\text{opx} + \text{plag}$ samples, the deformation mechanism is also assumed to be predominantly DPC, as demonstrated by the fact that (1) the samples deform at lower stresses well below the Goetze criterion, and (2) the microstructures that consist of elongate mineral aggregates of reaction products dominantly grow in the extension direction, shear bands or in dilatant sites (Fig. 2, 6, 12). The nucleation of reaction products, anisotropic growth and local dilatancy could also require the operation of GBS ("Lifshitz sliding"; Paterson, 1990; Langdon, 2006). The grain sizes of the reaction products 395 in the Fe-rich $\text{opx} + \text{plag}$ samples are larger, resulting in higher flow stresses compared to the final stresses – after weakening – of the Mg-rich $\text{opx} + \text{plag}$ samples (Fig. 2, 11; e.g., Mansard et al., 2020).

In addition, the amphibole fabric displays a fairly moderate, but consistent LPO with [001] axes aligned sub-parallel to the boundaries of C' shear bands (Fig. 12). This type of LPO is typical for naturally deformed amphibole (e.g., Berger and Stünitz, 1996). It is generally accepted that significant LPO of minerals is attributed to viscous deformation dominated by 400 dislocation creep (e.g., Nicolas and Christensen, 1987; Knipe, 1989; Wenk and Christie, 1991). However, an increasing number of studies have found that LPOs can develop without the dominance of dislocation creep, as shown in olivine (e.g., Sundberg and Cooper, 2008; Miyazaki et al., 2013, Précigout and Hirth, 2014), plagioclase (e.g., Barreiro et al., 2007) and amphibole (e.g., Getsinger and Hirth, 2014). The amph LPOs presented here are similar to the ones documented in experimentally 405 deformed amphibolite by Getsinger and Hirth, (2014), and to those of natural samples deformed at lower crustal conditions (e.g., Berger and Stünitz, 1996; Getsinger et al., 2013; Menegon et al., 2015; Okudaira et al., 2015). These studies have demonstrated that oriented grain growth of pyroxenes and amphibole can lead to consistent amphibole/pyroxene LPO, even though diffusion creep is the dominant deformation mechanism. We thus interpret the presence of amphibole LPO in our samples as resulting from an oriented growth with the fastest growth direction (c-axis) in the flow direction. This supports an important contribution of metamorphic re-equilibration, chemical transport, and hence, DPC in the development of amph 410 mylonitic foliation in the Fe-rich and $\text{amph} + \text{plag}$ assemblages (e.g., Bons and Den Brok, 2000; Berger and Stünitz, 1996).

4.3 Formation of polyphase vs. monophasic shear bands and implications for the degree of rheological weakening

4.3.1 Polyphase shear bands

In Mg-rich opx + plag assemblages at 850 °C, the mixture zones are strongly connected to form a single high-strain zone that traverses the sample through the center from one interface of the forcing block to the other (Fig. 3). The deformation microstructures at early stages of our experiments suggest that phase mixing occurs at phase boundaries with the nucleation of small equant grains in polyphase aggregates and layers (Figs. 10a). These polyphase aggregates, into which strain is partitioned, are composed of opx₂, plag₂ and amph. It has been documented by many authors (e.g., Kruse and Stünitz, 1999; Kenkmann and Dresen, 2002; Linckens et al. 2015) that phase mixing can be produced by the nucleation of new phases within clast tails. The effect of mixing on grain size is significant as grain growth is impeded by the nucleation of second phases and preserves a small grain size in the mixture zones (Fig. 11a), producing stable microstructures (e.g., Olgaard and Evans, 1986; 1988; Olgaard, 1990; Stünitz and Fitz Gerald, 1993; Herwegh and Berger, 2004; Warren and Hirth, 2006; Farla et al., 2013). The opening of cavities or formation of dilatant sites in which material can nucleate (e.g., Fuisseis et al., 2009; Platt, 2015; Menegon et al., 2015; Précigout and Stünitz, 2016; Précigout et al., 2017; Gilgannon et al., 2017) may be an additional factor to promote mixing and leading to stabilize small grain sizes.

4.3.2 Amphibole-dominated σ -tails and shear bands

In the Fe-rich opx + plag samples, the majority of reaction products occurs in strongly deformed portions of the shear zones, indicating a close relationship between deformation and mineral reactions (Fig. 3b). These portions are not characterized by the development of intensely mixture zones with C-type mylonite geometries, as in the Mg-rich opx + plag assemblages. Instead, deformation and reaction have induced the formation of shear bands or, more frequently, σ -tails at the tip of elongated amph or amph + opx₂ (Fig. 5, 6). These tails stay connected with the original porphyroclasts, forming S-C or S-C'-fabrics. Similarly, the amph + plag assemblage is banded and shows a sub-horizontal mylonitic foliation characterized by the development of amph-rich shear bands (Fig. 3c). These shear bands have a similar geometry as those of the amph + opx₂ bands and σ -clasts of the Fe-rich opx + plag assemblages.

4.3.3 Effects of shear band interconnection on the degree of rheological weakening

Shear bands connect differently depending on the composition of the starting material. In the Mg-rich opx + plag samples, strain tends to produce mixed and connected fine-grained bands with C-type geometry in high-strain zones (Fig. 3a, 4, 10a, 11a). This gave rise to the development of a single through-going high-strain zone that probably contributed to strongly weaken the samples after peak stress (Fig. 2, 3a). And the samples are so weak that we consider the fine-grained aggregate of reaction products as almost sustaining the whole sample strength. In contrast, the Fe-rich opx + plag and amph + plag mixtures

tend to form clusters and only locally connected amphibole-rich σ -tails at porphyroclasts (S-C- or S-C'- type geometries; Fig. 3b-c, 5g-l, 6 and 10b). When the shear bands and tails of clasts are only partially or non-connected, there is no peak stress, and hence, no subsequent weakening (Fig. 3b; Fe-rich opx + plag assemblages). This feature may be caused by two aspects: (1) the absence of highly connected aggregates of reaction products; and (2) the fact that reaction products have a larger grain size and are less intensely mixed, so that GSS creep occurs at lower strain rate. The connectivity of the reaction products appears to be also affected by their geometry; the fine-grained C-type bands are parallel to the shear plane and seem to connect much more easily than the local S-C- and S-C'-type tails and shear bands.

The fact that the connectivity of weak zones has a major effect on the bulk sample strength has been documented by, e.g., Pec et al. (2012, 2016), Palazzin et al., 2018, Richter et al. (2018) and is definitely a major rheological factor in these mafic samples. However, in addition to the connectivity, we also documented different microstructures in the weak parts of each sample, pointing to a difference in GBS/DPC mechanisms. The less intensely mixed layers, tails and shear bands in the Fe-rich assemblages display higher aspect ratios of the reaction products, i.e., more fiber-like grains (Fig. 6c; 10b, 12a-b). These microstructures constitute a type of DPC that is tending more towards grain-scale DPC, where ideally (in the end-member case) the grain shapes would reflect the finite strain and where grain boundary sliding is more a type of Lifshitz-sliding. We cannot consider the Fe-rich opx + plag samples as representative of the end-member case, but they approach this situation far more than the fine-grained, well mixed mylonitic bands of equant grains in Mg-rich opx + plag samples (Fig. 4a-b; 13), where DPC is probably dominated by GBS or Rachinger-sliding. The combination of relatively fast strain rates in the fine-grained layers and strong connectivity of the reaction product zones causes the pronounced weakening in the Mg-rich opx + plag samples, emphasizing the importance of grain size on material strength (Mansard et al., 2020). Such expected higher strain rates in aggregates dominated by Rachinger sliding has been pointed out by Paterson, (1990).

4.4 OH speciation and concentration in the starting material

Our absorption spectra have been compared with reference spectra available for plagioclase (Johnson and Rossmann, 2003, 2004; Johnson, 2006) and orthopyroxene (Skogby, 2006) in the literature. While IR spectra we obtained in plagioclase and opx are very similar to one another, they strongly differ from the reference spectra, which correspond to structural OH or H₂O, i.e. to molecules with specific position and orientation in the structure of the host mineral. The spectra in plagioclase bear the largest similarities with reference measurements of fluid inclusions and alteration products (Johnson and Rossmann, 2004), i.e., OH or H₂O molecules not structurally bound to the host solid. This interpretation is also favoured by the very similar shape of the spectra in plag and opx (Fig. 9), whereas structural OH or H₂O in these minerals yield different spectra.

According to this interpretation, the calibration coefficient for the H₂O content should be different from that of the mineral-specific ones we have used. However, using the general coefficient from Paterson (1982) would not significantly affect the estimates of H₂O concentration in the starting material: the integrated absorption coefficient used in Fig. 9 is 80600

L/(mol H₂O.cm²) for opx (Bell et al., 1995), and 107000 L/(mol H₂O.cm²) for plag, i.e. relatively similar to the estimate of 82200 L/(mol.cm²) for quartz and other silicates (Paterson, 1982).

480 Bearing in mind these limitations, the amount of H₂O initially present in the minerals of the Fe-rich system is of the order of 451 ppm for pyroxene and 226 ppm for plagioclase, whereas it is effectively zero in the Mg-rich-system. The total amount of H₂O in pyroxene and plagioclase in the Fe-rich system is ~677 ppm, i.e., more than half with respect to the addition of H₂O to the powder. The initial amount of H₂O estimated by FTIR is a lower bound as only grain interiors were analyzed by FTIR, while crushed polycrystalline aggregates include grain boundary area with additional adsorbed H₂O (Palazzin et al., 2018). In summary, it is estimated that the total amount of H₂O in the Fe-rich system has been ~50% higher than that in the Mg-rich-system.

485

4.5 Role of H₂O availability on reaction

In the Fe-rich opx + plag samples, a large amount of amph is formed with a minor amount of opx₂, whereas in the Mg-rich opx + plag samples, the nucleation of a new opx₂ is more abundant. The thermodynamic modeling of the Fe-rich opx + plag system has produced a result similar to that of Okudaira et al. (2015) as an extension to higher pressures and 490 temperatures, and rather consistent with the observed phase compositions, although the predicted garnet was not observed, and cpx is of lower abundance than predicted by the model. However, it was not possible to model the observed reactions in the Mg-rich opx + plag system in terms of phase compositions. The reason for the inadequate modeling is most likely the somewhat inadequate activity-composition relation in the Mg-rich system. Due to this issue, it is impossible to calculate differences in free energy between the two systems as a possible explanation for the different reaction kinetics.

495 Another difference between the two starting materials is the higher content of H₂O in the Fe-rich system. Considering that amphibole contains 2 wt.% of H₂O, the amount of H₂O required to form 17% of amphibole would be 3400 wt. ppm, which is a bit higher than the total amount of H₂O present in the sample. Our estimations of 17% amphibole content is also a rough estimate. In any case, it is probable that a large amount, if not all, of the H₂O is used up by the amphibole formation, even though the total amount of H₂O in the Fe-rich system is greater to begin with. Conversely, the amount of amphibole 500 formed in the Mg-opx + plag assemblage is subordinate, so that, despite a lower total amount of H₂O in the starting material, there probably is free H₂O present in the Mg-rich system. It could be speculated that the presence of more H₂O in the grain boundary region could lead to a more disperse nucleation of reaction products in the Mg-rich system.

4.6 Influence of reaction on material strength

505 4.6.1 Behavior at the onset of deformation: peak strength

Considering that the rheological behavior is strongly controlled by the reaction products, it is inferred that the Fe-rich opx + plag assemblages do not develop a peak stress behavior and initially deform at lower stresses than the Mg-rich opx + plag assemblages because in the Fe-rich assemblages reaction products nucleate faster than in the Mg-rich assemblages at early stages of the experiment (Fig. 2b-d, 14). We do not have samples of the same low strain for Mg-rich and Fe-rich compositions, but OR61 and 557NM (Fig. 2) can be compared as approximately similar strain samples. The Mg-rich material shows a slightly lower initial amount of reaction products. The faster nucleation of reaction products in Fe-rich samples is consistent with the recent study of Mansard et al. (2020) showing that for samples where reaction products nucleate at an early stage with respect to the onset of deformation, the peak strength is lowered. The system that reacts faster is the Fe-rich one, which contains a greater concentration of H₂O. This water is present inside the grains of the starting material, whereas the added water is located along the grain boundaries. These differences suggest that the presence of H₂O in inclusions or aggregates inside grains may have triggered the onset of hydration reactions, so that, possibly, the higher initial content in H₂O and its location inside grains in the Fe-rich system may have had a positive effect on the kinetics of reaction. Microcracking is common in opx grains, so that H₂O initially stored in the grains may easily become available for reactions during deformation, as observed in Palazzin et al. (2018). The reactions have commenced earlier in the Fe-rich system, presenting a weakening agent in the early stages of the deformation. The fact that sample strength is directly related to H₂O content such as in H₂O weakening in olivine and quartz is very unlikely, because crystal plasticity does not contribute significantly as a deformation mechanism.

4.6.2 Behavior at large strain

During later stages of our experiments, the highest proportion of reaction products and the smallest grain size is documented for the Mg-rich opx + plag samples (Fig. 11, 14), which also record a far more pronounced weakening with respect to the Fe-rich samples (Fig. 2, 14). The phase mixing and fine grain sizes of the reaction products in Mg-rich opx + plag samples cause greater strain partitioning and suggest a faster nucleation rate after peak stress, even though the Fe-rich opx + plag samples react faster at early stages of experiment (Fig. 8, 14). Deformation and reaction products are strongly localized and connected in high-strain zones of the Mg-rich opx + plag assemblages (Fig. 3a, 10a), whereas the reaction products in the Fe-rich opx + plag samples are poorly or non-connected (Fig. 3b, 10b). In the case where the viscosity of the reaction products is very low (fine-grained mixture zones in the Mg-rich opx + plag) compared to the starting material, the reacting domains tend to connect much better during the deformation (Fig. 14). It has been demonstrated that deformation enhances the kinetics of mineral reactions (De Ronde and Stünitz, 2007; Mansard et al., 2020), so that the significant localization of deformation in the Mg-rich opx + plag samples may account for the more advanced reaction progress in those samples. On the contrary, if the reaction products are stiffer – in Fe-rich opx + plag samples, amphibole appears to be one of the strongest silicates (Brodie

and Rutter, 1985; Berger and Stünitz, 1996) – or harden during the reaction (see Fe-rich opx + plag at 900 °C; Fig. 2d), the feedback effect of enhancing reaction kinetics appears to be limited and no weakening is observed (Fig. 2). Therefore, the viscosity of the Fe-rich opx + plag and amph + plag assemblages is related to their ability to transform and connect.

540 The reason why the reaction products in Mg-rich samples characterize by fine-grained layers that do not stay attached to the original opx₁ clasts is not clear yet, but this might be related to the difference in the amount and distribution of H₂O. Indeed, in the Fe-rich system, the reaction products are dominated by a single-phase material, i.e., amphibole (Fig. 6). In contrast, although the very small grain size did not allow any quantitative estimates of the Mg-rich reaction products, much more phase mixing occurs in these latter. The difference in nature and proportion of reaction products between Fe- and Mg-rich systems is a major control factor for their later resistance evolution during connectivity and reaction progress. This
545 situation illustrates that substantially more work is needed to understand the relationship between mineral reaction and mechanical behavior.

4.7 Geological application

According to the results of this study, the rheological behavior of two-phase mixtures of mafic composition is
550 dependent on mineral reactions, as reactions can trigger strain localization and weakening, even at low shear strain. In two different starting materials, the reactions coupled with dissolution precipitation creep (DPC) in combination with grain boundary sliding allow the mafic assemblage to be deformed. Without mineral reactions, the mafic assemblage of pyroxene and plagioclase would be too strong to be deformed by dislocation creep at the applied strain rates (Mansard et al., 2020). This situation is the same in naturally deformed rocks: below ~700 °C, pyroxene and plagioclase assemblages do not show
555 significant crystal plastic deformation (e.g., Brodie and Rutter, 1985, 1992). The partly extensive deformation of mafic rocks at lower or higher metamorphic grades appears to be dependent upon mineral reactions, which can induce the development of rheologically weaker phases, or in the formation of fine-grained aggregates deforming by GSS creep, or in both (e.g., Brodie and Rutter, 1985; Brodie et al., 1992; Handy and Stünitz, 2002; Brander et al., 2012; Okudaira et al., 2017; Degli Alessandrini et al., 2017).

560 At low shear strain and identical P-T conditions, the small difference in mineral reactions between the Fe-rich opx + plag and Mg-rich opx + plag assemblages induces clear differences in mechanical strength at peak stress and during subsequent weakening. These observations are crucial as shear zones are known to represent preferential regions for mineral reactions to occur, either owing to deformation (e.g., Brodie, 1980) or to the presence of fluids (e.g., Etheridge et al., 1983) during protracted shearing (e.g., Brodie, 1980; Philippot and Kienast, 1989; Newman et al., 1999). Thus, local spatial variations in
565 mineral reactions can induce gradients in deformation due to sufficient differences in the mechanical behavior to localize strain (e.g., Holyoke and Tullis, 2006a, b). In addition, our observations suggest that the mechanical strength at peak stress is controlled by the ability of the material to react and to connect the weak material, and not necessarily by the strength of the reaction products. In fact, the Fe-rich opx + plag assemblages produce intrinsically stronger reaction products (more

amphibole) than the fine-grained mixed aggregates and layers in the Mg-rich opx + plag assemblages, and yet Fe-rich opx +
570 plag assemblages are weaker at low shear strain because they react faster. It is speculated that this difference in reaction kinetics
is in part controlled by the amount of H₂O present. The higher H₂O content in the Fe-rich opx + plag assemblages may have
had a positive effect on the kinetics of reaction. This aspect on the influence of H₂O availability on the strength of materials is
important because shear zones have long been recognized as a preferred locus for fluid migration (e.g., Austrheim, 1987;
Newton, 1990; Selverstone et al., 1991; Gueydan et al., 2004; Angiboust et al., 2011), particularly due to the development of
575 synkinematic porosity resulting from dilatancy at grain boundaries (Tullis et al., 1996), creep cavitation (Fusseis et al., 2009;
Menegon et al., 2015; Précigout and Stünitz, 2016; Précigout et al., 2019) or from dehydration reactions and associated
fracturing (Plümper et al., 2017).

Our results suggest that small initial differences in mineral reactions in natural materials can trigger strain localization
and lead to large differences in mechanical strength, regardless of the intrinsic strength of the reaction products. These
580 observations mainly apply to the initiation and early stages of shear zone formation, as once the incipient stages of strain
localization and weakening are initiated, additional mechanisms are involved and control the development of the shear zones
in space and time.

The development of natural shear zones commonly arises into distinctive monophase layers (e.g., Berthé et al., 1979;
Gapais, 1989) and/or polyphase mixtures (e.g., Fliervoet et al., 1997; Keller et al., 2004; Warren and Hirth, 2006; Kanagawa
585 et al., 2008; Raimbourg et al., 2008; Okudaira et al., 2015) that may be found in the same shear zone as alternating layers (e.g.,
Kenkmann and Dresen, 2002; Kilian et al., 2011; Oliot et al., 2014; Mansard et al., 2018). In our case, the progressive
deformation of two-phase assemblages also shows the development of (1) strongly localized polyphase high-strain zone
associated with a significant weakening after peak stress (Mg-rich assemblages), and (2) only locally connected σ -clast bands
that do not induce major weakening (Fe-rich opx + plag and amph + plag assemblages). Strain localization into reaction-
590 derived fine-grained mixture is also well documented in nature with the dominance of diffusion-accommodated GBS and/or
DPC mechanisms (e.g., Newman et al., 1999; Handy and Stünitz, 2002; Kanagawa et al., 2008; Okudaira et al., 2015) and is
expected to promote major rheological weakening (e.g., Fliervoet et al., 1997; Svahnberg and Piazzolo, 2013; Warren and Hirth,
2006; Platt, 2015). The development of amph-rich σ -shaped aggregates and layers, notably through dissolution and
precipitation processes, is also commonly documented in mid- to lower-crustal banded mylonites (e.g., Berger and Stünitz,
595 1996; Imon et al., 2002; Imon et al., 2004; Baratoux et al., 2005; Getsinger et al., 2013; Elyaszadeh et al., 2018; Giuntoli et
al., 2018).

When applied to natural shear zones, our results suggest that (1) the ability of minerals to react controls the portions
of rocks that deform, and (2) minor chemical and mineralogical variations (including the H₂O available for reaction) can
considerably modify the strength of deformed assemblages. Then, significant strain localization and partitioning at high shear
600 strain, expressed by the development of interconnected high-strain zones (Mg-rich opx + plag), illustrates that fine-grained
polyphase mixed zones can become weaker than coarse-grained, poorly-connected ones (Fe-rich opx + plag and amph + plag).
These results emphasize the importance of strain partitioning, grain size reduction, and interconnectivity of weak material as

a primary control of lithospheric strength. This also suggests that the rheology of mafic rocks, which constitutes a large part of the oceanic crust and may be one of the main components of the lower continental crust, cannot be summarized as being rheologically controlled by monophasic materials (e.g., Dimanov and Dresen, 2005).

5 Conclusions

Shear deformation experiments of monophasic and polyphasic assemblages show a clear relationship between deformation and mineral reactions. A greater volume of reaction products is documented with increasing strain. This study shows that the presence of mineral reaction and strain localization has a major impact on sample strength because it conditions the resistance of the assemblage at low shear strain. Indeed, the Fe-rich opx + plag assemblages deform at lower stresses than the Mg-rich opx + plag assemblages because they react faster at early stages of experiment. Thus, chemically similar assemblages may have significantly different strength development depending on the ability of these minerals to react. It is suggested that the availability of H₂O, among other factors such as mineral composition, has a positive effect on the kinetics of reaction. With increasing strain, there are two very contrasted pathways in the material evolution, controlled by the properties of the reaction: in one case (Fe-opx + plag and amph + plag assemblages), the reaction products (mostly amphibole) have elongated grain shapes, a larger grain size and poor connectivity. As a result, they do not show significant weakening. In such a case, the reaction products are only partially connected, the material deforms by grain scale DPC, and strength of the bulk sample is stable and the feedback effect of deformation on reaction is limited. In the other cases (Mg-rich opx + plag and pure amph assemblages), the fine-grained, intensely mixed reaction products of equant grains weaken considerably during the experiment and end up much weaker than the initial material. There, mechanically weak zone of reaction product deforms by GBS-dominated DPC and tends to form an interconnected zone that leads to the weakening of the bulk sample, and the drastic increase in proportion of reaction products with strain suggests a large feedback effect. Overall, the value of the initial peak stress (that is responsible for determining where strain will start localizing) or the large weakening associated with the formation of fine-grained products (that determine whether shear bands thicken or not), seem to be mainly controlled by the chemical reactions.

Data availability

630 Experimental data were processed using a MATLAB-based program inspired from the “rig” program of Dr. Matej Pec (Pec et al., 2016) and available at <https://sites.google.com/site/jacquesprecigout/telechargements-downloads>.

Author contribution

Nicolas Mansard, Holger Stünitz, Hugues Raimbourg and Jacques Précigout designed the experiments. Nicolas
635 Mansard and Jacques Précigout carried them out. Nicolas Mansard carried out the various analyses after the experiments (e.g., SEM, EPMA). Alexis Plunder worked on the thermodynamic modeling part while Lucille Nègre contributed to the FTIR data acquisition. Nicolas Mansard prepared the manuscript with contributions from all co-authors.

Competing interests

The authors declare that they have no conflict of interest.

640 Acknowledgements

This work has received funding from (1) the European Research Council (ERC) under the seventh Framework Programme of the European Union (ERC Advanced Grant, grant agreement No 290864, RHEOLITH), (2) the Labex VOLTAIRE (ANR-10-LABX-100-01), and (3) the project FluPrism (CNRS INSU, funding program SYSTER). We gratefully
645 acknowledge the help provided by Patricia Benoist and Ida Di Carlo for analytical support, Sylvain Janiec for the preparation of thin sections and Kai Neufeld for EBSD data acquisition. The authors wish to thank Mark Zimmerman for generously providing the Damaping peridotite and Laurent Arbaret for the Massif Central amphibolite material. We also appreciate thorough and constructive reviews by Luca Menegon and Jolien Linckens. We would like to thank Florian Füsseis for editorial handling.

References

650 Angiboust, S., Agard, P., Raimbourg, H., Yamato, P. and Huet, B.: Subduction interface processes recorded by eclogite-facies shear zones (Monviso, W. Alps), *Lithos*, 127(1–2), 222–238, doi:10.1016/j.lithos.2011.09.004, 2011.

Ashby, M. . and Verrall, R. .: Diffusion-accommodated flow and superplasticity, *Acta Metall.*, 21(2), 149–163,

doi:10.1016/0001-6160(73)90057-6, 1973.

655 Austrheim, H.: Eclogitization of lower crustal granulites by fluid migration through shear zones, *Earth Planet. Sci. Lett.*, 81(2–3), 221–232, doi:10.1016/0012-821X(87)90158-0, 1987.

Baratoux, L., Schulmann, K., Ulrich, S. and Lexa, O.: Contrasting microstructures and deformation mechanisms in metagabbro mylonites contemporaneously deformed under different temperatures (c. 650 °C and c. 750 °C), *Geol. Soc. London, Spec. Publ.*, 243(1), 97–125, doi:10.1144/GSL.SP.2005.243.01.09, 2005.

660 Barreiro, J. G., Lonardelli, I., Wenk, H. R., Dresen, G., Rybacki, E., Ren, Y. and Tomé, C. N.: Preferred orientation of anorthite deformed experimentally in Newtonian creep, *Earth Planet. Sci. Lett.*, 264(1–2), 188–207, doi:10.1016/J.EPSL.2007.09.018, 2007.

Behrmann, J. H.: Crystal plasticity and superplasticity in quartzite; A natural example, *Tectonophysics*, 115(1–2), 101–129, doi:10.1016/0040-1951(85)90102-7, 1985.

665 Bell, D. R., Ihinger, P. D. and Rossman, G. R.: Quantitative analysis of trace OH in garnet and pyroxenes, *Am. Mineral.*, 80(5–6), 465–474, doi:10.2138/am-1995-5-607, 1995.

Bercovici, D. and Ricard, Y.: Mechanisms for the generation of plate tectonics by two-phase grain-damage and pinning, *Phys. Earth Planet. Inter.*, 202–203, 27–55, doi:10.1016/J.PEPI.2012.05.003, 2012.

Berger, A. and Stünitz, H.: Deformation mechanisms and reaction of hornblende: examples from the Bergell tonalite (Central Alps), *Tectonophysics*, 257(2–4), 149–174, doi:10.1016/0040-1951(95)00125-5, 1996a.

670 Berger, A. and Stünitz, H.: Deformation mechanisms and reaction of hornblende: examples from the Bergell tonalite (Central Alps), *Tectonophysics*, 257(2–4), 149–174, doi:10.1016/0040-1951(95)00125-5, 1996b.

Berthé, D., Choukroune, P. and Jegouzo, P.: Orthogneiss, mylonite and non coaxial deformation of granites: the example of the South Armorican Shear Zone, *J. Struct. Geol.*, 1(1), 31–42, doi:10.1016/0191-8141(79)90019-1, 1979.

675 Bons, P. D. and Den Brok, B.: Crystallographic preferred orientation development by dissolution-precipitation creep, in *Journal of Structural Geology*, vol. 22, pp. 1713–1722., 2000.

Borg, I. and Handin, J.: Experimental deformation of crystalline rocks, *Tectonophysics*, 3(4), 249–367, doi:10.1016/0040-1951(66)90019-9, 1966.

Boullier, A. M. and Gueguen, Y.: SP-Mylonites: Origin of some mylonites by superplastic flow, *Contrib. to Mineral. Petrol.*, 50(2), 93–104, doi:10.1007/BF00373329, 1975.

680 Brander, L., Svahnberg, H. and Piazzolo, S.: Brittle-plastic deformation in initially dry rocks at fluid-present conditions:

- Transient behaviour of feldspar at mid-crustal levels, *Contrib. to Mineral. Petrol.*, 163(3), 403–425, doi:10.1007/s00410-011-0677-5, 2012.
- Brodie, K. H.: Variations in mineral chemistry across a shear zone in phlogopite peridotite, *J. Struct. Geol.*, 2(1–2), 265–272, doi:10.1016/0191-8141(80)90059-0, 1980.
- 685 Brodie, K. H. and Rutter, E. H.: *On the Relationship between Deformation and Metamorphism, with Special Reference to the Behavior of Basic Rocks*, pp. 138–179, Springer, New York, NY., 1985.
- Brodie, K. H. and Rutter, E. H.: The role of transiently fine-grained reaction products in syntectonic metamorphism: natural and experimental examples, *Can. J. Earth Sci.*, 24(3), 556–564, doi:10.1139/e87-054, 1987.
- Brodie, K. H., Rutter, E. H. and Evans, P.: On the structure of the Ivrea-Verbano Zone (northern Italy) and its implications for
690 present-day lower continental crust geometry, *Terra Nov.*, 4(1), 34–40, doi:10.1111/j.1365-3121.1992.tb00448.x, 1992.
- Bunge, H.-J.: *Texture analysis in materials science : mathematical methods*, Butterworths, London., 1982.
- Bystricky, M. and Mackwell, S.: Creep of dry clinopyroxene aggregates, *J. Geophys. Res. Solid Earth*, 106(B7), 13443–13454, doi:10.1029/2001JB000333, 2001.
- Bystricky, M., Lawlis, J., Mackwell, S., Heidelbach, F. and Raterron, P.: High-temperature deformation of enstatite aggregates,
695 *J. Geophys. Res. Solid Earth*, 121(9), 6384–6400, doi:10.1002/2016JB013011, 2016.
- Coe, R. S.: The thermodynamic effect of shear stress on the ortho-clino inversion in enstatite and other coherent phase transitions characterized by a finite simple shear, *Contrib. to Mineral. Petrol.*, 26(3), 247–264, doi:10.1007/BF00373203, 1970.
- Coe, R. S. and Kirby, S. H.: The orthoenstatite to clinoenstatite transformation by shearing and reversion by annealing: Mechanism and potential applications, *Contrib. to Mineral. Petrol.*, 52(1), 29–55, doi:10.1007/BF00378000, 1975.
- 700 Connolly, J. A. D.: The geodynamic equation of state: What and how, *Geochemistry, Geophys. Geosystems*, 10(10), n/a-n/a, doi:10.1029/2009GC002540, 2009.
- Dale, J., Powell, R., White, R. W., Elmer, F. L. and Holland, T. J. B.: A thermodynamic model for Ca-Na clinoamphiboles in Na₂O-CaO-FeO-MgO-Al₂O₃-SiO₂-H₂O-O for petrological calculations, *J. Metamorph. Geol.*, 23(8), 771–791, doi:10.1111/j.1525-1314.2005.00609.x, 2005.
- 705 Degli Alessandrini, G., Menegon, L., Malaspina, N., Dijkstra, A. H. and Anderson, M. W.: Creep of mafic dykes infiltrated by melt in the lower continental crust (Seiland Igneous Province, Norway), *Lithos*, 274–275, 169–187, doi:10.1016/j.lithos.2016.12.030, 2017.
- Dell’Angelo, L. N. and Tullis, J.: Textural and mechanical evolution with progressive strain in experimentally deformed aplitite,

- Tectonophysics, 256(1–4), 57–82, doi:10.1016/0040-1951(95)00166-2, 1996.
- 710 Dimanov, A. and Dresen, G.: Rheology of synthetic anorthite-diopside aggregates: Implications for ductile shear zones, *J. Geophys. Res. Solid Earth*, 110(7), 1–24, doi:10.1029/2004JB003431, 2005.
- Dimanov, A., Lavie, M. P., Dresen, G., Ingrin, J. and Jaoul, O.: Creep of polycrystalline anorthite and diopside, *J. Geophys. Res. Solid Earth*, 108(B1), doi:10.1029/2002JB001815, 2003.
- Dimanov, A., Rybacki, E., Wirth, R. and Dresen, G.: Creep and strain-dependent microstructures of synthetic anorthite–
715 diopside aggregates, *J. Struct. Geol.*, 29(6), 1049–1069, doi:10.1016/J.JSG.2007.02.010, 2007.
- Elyaszadeh, R., Prior, D. J., Sarkarnejad, K. and Mansouri, H.: Different slip systems controlling crystallographic preferred orientation and intracrystalline deformation of amphibole in mylonites from the Neyriz mantle diapir, Iran, *J. Struct. Geol.*, 107, 38–52, doi:10.1016/j.jsg.2017.11.020, 2018.
- Etheridge, M. A., Wall, V. J. and Vernon, R. H.: The role of the fluid phase during regional metamorphism and deformation,
720 *J. Metamorph. Geol.*, 1(3), 205–226, doi:10.1111/j.1525-1314.1983.tb00272.x, 1983.
- Farla, R. J. M., Karato, S.-I. and Cai, Z.: Role of orthopyroxene in rheological weakening of the lithosphere via dynamic recrystallization., *Proc. Natl. Acad. Sci. U. S. A.*, 110(41), 16355–60, doi:10.1073/pnas.1218335110, 2013.
- Fitz Gerald, J. and Stünitz, H.: Deformation of granitoids at low metamorphic grade. I: Reactions and grain size reduction, *Elsevier Sci. Publ. B.V.*, 221, 269–297, doi:10.1016/0040-1951(93)90164-F, 1993.
- 725 Fliervoet, T. F. and White, S. H.: Quartz deformation in a very fine grained quartzo-feldspathic mylonite: a lack of evidence for dominant grain boundary sliding deformation, *J. Struct. Geol.*, 17(8), 1095–1109, doi:10.1016/0191-8141(95)00007-Z, 1995.
- Fliervoet, T. F., White, S. H. and Drury, M. R.: Evidence for dominant grain-boundary sliding deformation in greenschist- and amphibolite-grade polymineralic ultramylonites from the Redbank Deformed Zone, Central Australia, *J. Struct. Geol.*, 19(12),
730 1495–1520, doi:10.1016/S0191-8141(97)00076-X, 1997.
- Fusseis, F., Regenauer-Lieb, K., Liu, J., Hough, R. M. and De Carlo, F.: Creep cavitation can establish a dynamic granular fluid pump in ductile shear zones, *Nature*, 459(7249), 974–977, doi:10.1038/nature08051, 2009.
- Gapais, D.: Shear structures within deformed granites: Mechanical and thermal indicators., 1989.
- Getsinger, A. J. and Hirth, G.: Amphibole fabric formation during diffusion creep and the rheology of shear zones, *Geology*,
735 42(6), 535–538, doi:10.1130/G35327.1, 2014a.
- Getsinger, A. J. and Hirth, G.: Amphibole fabric formation during diffusion creep and the rheology of shear zones, , 535–538,

doi:10.1130/G35327.1, 2014b.

Getsinger, A. J., Hirth, G., Stünitz, H. and Goergen, E. T.: Influence of water on rheology and strain localization in the lower continental crust, *Geochemistry, Geophys. Geosystems*, 14(7), 2247–2264, doi:10.1002/ggge.20148, 2013.

740 Gilgannon, J., Fousseis, F., Menegon, L., Regenauer-Lieb, K. and Buckman, J.: Hierarchical creep cavity formation in an ultramylonite and implications for phase mixing, *Solid Earth*, 85194, 1193–1209, doi:10.5194/se-8-1193-2017, 2017.

Giuntoli, F., Menegon, L. and Warren, C. J.: Replacement reactions and deformation by dissolution and precipitation processes in amphibolites, *J. Metamorph. Geol.*, 36(9), 1263–1286, doi:10.1111/jmg.12445, 2018.

Gueydan, F., Leroy, Y. M. and Jolivet, L.: Mechanics of low-angle extensional shear zones at the brittle-ductile transition, *J. Geophys. Res. Solid Earth*, 109(12), 1–16, doi:10.1029/2003JB002806, 2004.

Handy, M. R.: Flow laws for rocks containing two non-linear viscous phases: A phenomenological approach, *J. Struct. Geol.*, 16(3), 287–301, doi:10.1016/0191-8141(94)90035-3, 1994.

Handy, M. R. and Stünitz, H.: Strain localization by fracturing and reaction weakening — a mechanism for initiating exhumation of subcontinental mantle beneath rifted margins, *Geol. Soc. London, Spec. Publ.*, 200(1), 387–407, doi:10.1144/GSL.SP.2001.200.01.22, 2002.

Harigane, Y., Michibayashi, K. and Ohara, Y.: Shearing within lower crust during progressive retrogression: Structural analysis of gabbroic rocks from the Godzilla Mullion, an oceanic core complex in the Parece Vela backarc basin, *Tectonophysics*, 457(3–4), 183–196, doi:10.1016/j.tecto.2008.06.009, 2008.

Herwegh, M. and Berger, A.: Deformation mechanisms in second-phase affected microstructures and their energy balance, *J. Struct. Geol.*, 26(8), 1483–1498, doi:10.1016/J.JSG.2003.10.006, 2004.

Herwegh, M., Linckens, J., Ebert, A., Berger, A. and Brodhag, S. H.: The role of second phases for controlling microstructural evolution in polymineralic rocks: A review, *J. Struct. Geol.*, 33(12), 1728–1750, doi:10.1016/j.jsg.2011.08.011, 2011.

Holland, T. J. B. and Powell, R.: An internally consistent thermodynamic data set for phases of petrological interest, *J. Metamorph. Geol.*, 16(3), 309–343, doi:10.1111/j.1525-1314.1998.00140.x, 1998.

760 Holyoke, C. W. and Tullis, J.: Formation and maintenance of shear zones, *Geology*, 34(2), 105–108, doi:10.1130/G22116.1, 2006a.

Holyoke, C. W. and Tullis, J.: Mechanisms of weak phase interconnection and the effects of phase strength contrast on fabric development, *J. Struct. Geol.*, 28(4), 621–640, doi:10.1016/j.jsg.2006.01.008, 2006b.

Imon, R., Okudaira, T. and Fujimoto, A.: Dissolution and precipitation processes in deformed amphibolites: an example from

- 765 the ductile shear zone of the Ryoke metamorphic belt, SW Japan, *J. Metamorph. Geol.*, 20(3), 297–308, doi:10.1046/j.1525-1314.2002.00367.x, 2002.
- Imon, R., Okudaira, T. and Kanagawa, K.: Development of shape- and lattice-preferred orientations of amphibole grains during initial cataclastic deformation and subsequent deformation by dissolution-precipitation creep in amphibolites from the Ryoke metamorphic belt, SW Japan, *J. Struct. Geol.*, 26(5), 793–805, doi:10.1016/j.jsg.2003.09.004, 2004.
- 770 Johnson, E. A.: Water in nominally anhydrous crustal minerals: Speciation, concentration, and geologic significance, in *Water in Nominally Anhydrous Minerals*, vol. 62, pp. 117–154, Walter de Gruyter GmbH., 2006.
- Johnson, E. A. and Rossman, G. R.: A survey of hydrous species and concentrations in igneous feldspars, *Am. Mineral.*, 89(4), 586–600, doi:10.2138/am-2004-0413, 2004.
- Johnson, E. A. and Rossmann, G. R.: The concentration and speciation of hydrogen in feldspars using FTIR and ¹H MAS
775 NMR spectroscopy, *Am. Mineral.*, 88(5), 901–911, doi:10.2138/am-2003-5-620, 2003.
- Jolivet, L. and Miyashita, S.: The Hidaka Shear Zone (Hokkaido, Japan): Genesis during a right-lateral strike-slip movement, *Tectonics*, 4(3), 289–302, doi:10.1029/TC004i003p00289, 1985.
- Jordan, P.: The rheology of polymineralic rocks - an approach, *Geol. Rundschau*, 77(1), 285–294, doi:10.1007/BF01848690, 1988.
- 780 Kanagawa, K., Shimano, H. and Hiroi, Y.: Mylonitic deformation of gabbro in the lower crust: A case study from the Pankenushi gabbro in the Hidaka metamorphic belt of central Hokkaido, Japan, *J. Struct. Geol.*, 30(9), 1150–1166, doi:10.1016/j.jsg.2008.05.007, 2008.
- Keller, L. M., Abart, R., Stünitz, H. and De Capitani, C.: Deformation, mass transfer and mineral reactions in an eclogite facies shear zone in a polymetamorphic metapelite (Monte Rosa nappe, western Alps), *J. Metamorph. Geol.*, 22(2), 97–118,
785 doi:10.1111/j.1525-1314.2004.00500.x, 2004.
- Kenkmann, T. and Dresen, G.: Dislocation microstructure and phase distribution in a lower crustal shear zone - An example from the Ivrea-Zone, Italy, *Int. J. Earth Sci.*, 91(3), 445–458, doi:10.1007/s00531-001-0236-9, 2002.
- Kerrich, R., Allison, I., Barnett, R. L., Moss, S. and Starkey, J.: Microstructural and chemical transformations accompanying deformation of granite in a shear zone at Miéville, Switzerland; with implications for stress corrosion cracking and superplastic
790 flow, *Contrib. to Mineral. Petrol.*, 73(3), 221–242, doi:10.1007/BF00381442, 1980.
- Kilian, R., Heilbronner, R. and Stünitz, H.: Quartz grain size reduction in a granitoid rock and the transition from dislocation to diffusion creep, *J. Struct. Geol.*, 33(8), 1265–1284, doi:10.1016/j.jsg.2011.05.004, 2011.

- Knipe, R. : Deformation mechanisms — recognition from natural tectonites, *J. Struct. Geol.*, 11(1–2), 127–146, doi:10.1016/0191-8141(89)90039-4, 1989.
- 795 Kohlstedt, D. L., Evans, B. and Mackwell, S. J.: Strength of the lithosphere: Constraints imposed by laboratory experiments, *J. Geophys. Res. Solid Earth*, 100(B9), 17587–17602, doi:10.1029/95JB01460, 1995.
- Kruse, R. and Stünitz, H.: Deformation mechanisms and phase distribution in mafic high-temperature mylonites from the Jotun Nappe, southern Norway, *Tectonophysics*, 303(1–4), 223–249, doi:10.1016/S0040-1951(98)00255-8, 1999.
- Langdon, T. G.: Grain boundary sliding revisited: Developments in sliding over four decades, *J. Mater. Sci.*, 41(3), 597–609, doi:10.1007/s10853-006-6476-0, 2006.
- 800 Linckens, J., Herwegh, M., Müntener, O. and Mercolli, I.: Evolution of a polymineralic mantle shear zone and the role of second phases in the localization of deformation, *J. Geophys. Res. Solid Earth*, 116(6), doi:10.1029/2010JB008119, 2011.
- Linckens, J., Herwegh, M. and Müntener, O.: Small quantity but large effect - How minor phases control strain localization in upper mantle shear zones, *Tectonophysics*, 643, 26–43, doi:10.1016/j.tecto.2014.12.008, 2015.
- 805 Mansard, N., Raimbourg, H., Augier, R., Précigout, J. and Le Breton, N.: Large-scale strain localization induced by phase nucleation in mid-crustal granitoids of the south Armorican massif, *Tectonophysics*, 745, doi:10.1016/j.tecto.2018.07.022, 2018b.
- Mansard, N., Stünitz, H., Raimbourg, H. and Précigout, J.: The role of deformation-reaction interactions to localize strain in polymineralic rocks: Insights from experimentally deformed plagioclase-pyroxene assemblages, *J. Struct. Geol.*, 134, doi:10.1016/j.jsg.2020.104008, 2020.
- 810 Marti, S., Stünitz, H., Heilbronner, R., Plümper, O. and Drury, M.: Experimental investigation of the brittle-viscous transition in mafic rocks – Interplay between fracturing, reaction, and viscous deformation, *J. Struct. Geol.*, 105, 62–79, doi:10.1016/j.jsg.2017.10.011, 2017.
- Marti, S., Stünitz, H., Heilbronner, R., Plümper, O. and Kilian, R.: Syn-kinematic hydration reactions , grain size reduction , and dissolution – precipitation creep in experimentally deformed plagioclase – pyroxene mixtures, , 985–1009, 2018.
- 815 Mehl, L. and Hirth, G.: Plagioclase preferred orientation in layered mylonites: Evaluation of flow laws for the lower crust, *J. Geophys. Res.*, 113(B5), B05202, doi:10.1029/2007JB005075, 2008.
- Menegon, L., Fusses, F., Stünitz, H. and Xiao, X.: Creep cavitation bands control porosity and fluid flow in lower crustal shear zones, *Geology*, 43(3), 227–230, doi:10.1130/G36307.1, 2015.
- 820 Miyazaki, T., Sueyoshi, K. and Hiraga, T.: Olivine crystals align during diffusion creep of Earth’s upper mantle, *Nature*,

- 502(7471), 321–326, doi:10.1038/nature12570, 2013.
- Montési, L. G. J.: Fabric development as the key for forming ductile shear zones and enabling plate tectonics, *J. Struct. Geol.*, 50, 254–266, doi:10.1016/j.jsg.2012.12.011, 2013.
- Newman, J., Lamb, W. M., Drury, M. R. and Vissers, R. L. M.: Deformation processes in a peridotite shear zone: reaction-softening by an H₂O-deficient, continuous net transfer reaction, *Tectonophysics*, 303(1–4), 193–222, doi:10.1016/S0040-1951(98)00259-5, 1999.
- Newton, R. C.: Fluids and shear zones in the deep crust, *Tectonophysics*, 182(1–2), 21–37, doi:10.1016/0040-1951(90)90339-A, 1990.
- Newton, R. C., Charlu, T. V. and Kleppa, O. J.: Thermochemistry of the high structural state plagioclases, *Geochim. Cosmochim. Acta*, 44(7), 933–941, doi:10.1016/0016-7037(80)90283-5, 1980.
- Nicolas, A. and Christensen, N. I.: Formation of anisotropy in upper mantle peridotites: A review, pp. 111–123, American Geophysical Union (AGU), 1987.
- Okudaira, T., Jeřábek, P., Stünitz, H. and Füsseis, F.: High-temperature fracturing and subsequent grain-size-sensitive creep in lower crustal gabbros: Evidence for coseismic loading followed by creep during decaying stress in the lower crust, *J. Geophys. Res. Solid Earth*, 120(5), 3119–3141, doi:10.1002/2014JB011708, 2015.
- Okudaira, T., Shigematsu, N., Harigane, Y. and Yoshida, K.: Grain size reduction due to fracturing and subsequent grain-size-sensitive creep in a lower crustal shear zone in the presence of a CO₂-bearing fluid, *J. Struct. Geol.*, 95, 171–187, doi:10.1016/j.jsg.2016.11.001, 2017.
- Olgaard, D. L.: The role of second phase in localizing deformation, *Geol. Soc. London, Spec. Publ.*, 54(1), 175–181, doi:10.1144/GSL.SP.1990.054.01.17, 1990.
- Olgaard, D. L. and Evans, B.: Effect of Second-Phase Particles on Grain Growth in Calcite, *J. Am. Ceram. Soc.*, 69(11), C-272-C-277, doi:10.1111/j.1151-2916.1986.tb07374.x, 1986.
- Olgaard, D. L. and Evans, B.: Grain growth in synthetic marbles with added mica and water, *Contrib. to Mineral. Petrol.*, 100(2), 246–260, doi:10.1007/BF00373591, 1988.
- Oliot, E., Goncalves, P., Schulmann, K., Marquer, D. and Lexa, O.: Mid-crustal shear zone formation in granitic rocks: Constraints from quantitative textural and crystallographic preferred orientations analyses, *Tectonophysics*, 612–613, 63–80, doi:10.1016/j.tecto.2013.11.032, 2014.
- Palazzin, G., Raimbourg, H., Stünitz, H., Heilbronner, R., Neufeld, K. and Précigout, J.: Evolution in H₂O contents during

- deformation of polycrystalline quartz: An experimental study, *J. Struct. Geol.*, 114, 95–110, doi:10.1016/J.JSG.2018.05.021,
850 2018.
- Paterson, M. S.: The determination of hydroxyl by infrared adsorption in quartz, silicate glasses and similar materials., *Bull. Mineral.*, 105(1), 20–29, doi:10.3406/bulmi.1982.7582, 1982.
- Paterson, M. S.: Superplasticity in Geological Materials, *MRS Proc.*, 196, doi:10.1557/proc-196-303, 1990.
- Paterson, M. S.: A Granular Flow Approach to Fine-Grain Superplasticity, in *Plastic Deformation of Ceramics*, pp. 279–283,
855 Springer US., 1995.
- Paterson, M. S.: *Materials Science for Structural Geology*, 1st ed., Springer, New York., 2013.
- Pec, M., Stünitz, H., Heilbronner, R., Drury, M. and de Capitani, C.: Origin of pseudotachylites in slow creep experiments, *Earth Planet. Sci. Lett.*, 355–356, 299–310, doi:10.1016/J.EPSL.2012.09.004, 2012a.
- Pec, M., Stünitz, H. and Heilbronner, R.: Semi-brittle deformation of granitoid gouges in shear experiments at elevated
860 pressures and temperatures, , 38, doi:10.1016/j.jsg.2011.09.001, 2012b.
- Pec, M., Stünitz, H., Heilbronner, R. and Drury, M.: Semi-brittle flow of granitoid fault rocks in experiments, *J. Geophys. Res. Solid Earth*, 121(3), 1677–1705, doi:10.1002/2015JB012513, 2016.
- Philippot, P. and Kienast, J. R.: Chemical-microstructural changes in eclogite-facies shear zones (Monviso, Western Alps, north Italy) as indicators of strain history and the mechanism and scale of mass transfer, *LITHOS*, 23(3), 179–200,
865 doi:10.1016/0024-4937(89)90004-2, 1989.
- Platt, J. P.: Rheology of two-phase systems: A microphysical and observational approach, *J. Struct. Geol.*, 77, 213–227, doi:10.1016/j.jsg.2015.05.003, 2015.
- Plümper, O., Botan, A., Los, C., Liu, Y., Malthe-Sørenssen, A. and Jamtveit, B.: Fluid-driven metamorphism of the continental crust governed by nanoscale fluid flow, *Nat. Geosci.*, 10(9), 685–690, doi:10.1038/ngeo3009, 2017.
- 870 Powell, R. and Holland, T.: Relating formulations of the thermodynamics of mineral solid solutions: Activity modeling of pyroxenes, amphiboles, and micas, *Am. Mineral.*, 84(1–2), 1–14, doi:10.2138/am-1999-1-201, 1999.
- Précigout, J. and Hirth, G.: B-type olivine fabric induced by grain boundary sliding, *Earth Planet. Sci. Lett.*, 395, 231–240, doi:10.1016/j.epsl.2014.03.052, 2014.
- Précigout, J. and Stünitz, H.: Evidence of phase nucleation during olivine diffusion creep: A new perspective for mantle strain
875 localisation, *Earth Planet. Sci. Lett.*, 455(October), 94–105, doi:10.1016/j.epsl.2016.09.029, 2016.

- Précigout, J., Prigent, C., Palasse, L. and Pochon, A.: Water pumping in mantle shear zones, *Nat. Commun.*, 8, 15736, doi:10.1038/ncomms15736, 2017.
- Précigout, J., Stünitz, H., Piquier, Y., Champallier, R. and Schubnel, A.: High-pressure, High-temperature Deformation Experiment Using the New Generation Griggs-type Apparatus., *J. Vis. Exp.*, (134), doi:10.3791/56841, 2018.
- 880 Raimbourg, H., Toyoshima, T., Harima, Y. and Kimura, G.: Grain-size reduction mechanisms and rheological consequences in high-temperature gabbro mylonites of Hidaka, Japan, *Earth Planet. Sci. Lett.*, 267(3–4), 637–653, doi:10.1016/j.epsl.2007.12.012, 2008.
- Richter, B., Stünitz, H. and Heilbronner, R.: The brittle-to-viscous transition in polycrystalline quartz: An experimental study, *J. Struct. Geol.*, 114, 1–21, doi:10.1016/j.jsg.2018.06.005, 2018.
- 885 De Ronde, A. A. and Stünitz, H.: Deformation-enhanced reaction in experimentally deformed plagioclase-olivine aggregates, *Contrib. to Mineral. Petrol.*, 153(6), 699–717, doi:10.1007/s00410-006-0171-7, 2007.
- De Ronde, A. A., Heilbronner, R., Stünitz, H. and Tullis, J.: Spatial correlation of deformation and mineral reaction in experimentally deformed plagioclase-olivine aggregates, *Tectonophysics*, 389(1–2), 93–109, doi:10.1016/j.tecto.2004.07.054, 2004.
- 890 De Ronde, A. A., Stünitz, H., Tullis, J. and Heilbronner, R.: Reaction-induced weakening of plagioclase-olivine composites, *Tectonophysics*, 409(1–4), 85–106, doi:10.1016/j.tecto.2005.08.008, 2005.
- Rubie, D. C.: Reaction-enhanced ductility: The role of solid-solid univariant reactions in deformation of the crust and mantle, *Tectonophysics*, 96(3–4), 331–352, doi:10.1016/0040-1951(83)90225-1, 1983.
- Rudnick, R. L. and Fountain, D. M.: Nature and composition of the continental crust: A lower crustal perspective, *Rev. Geophys.*, 33(3), 267, doi:10.1029/95RG01302, 1995.
- 895 Rutter and H., E.: Rheology of the lower crust., *Cont. Low. crust*, 201–267 [online] Available from: <https://ci.nii.ac.jp/naid/10004122576/> (Accessed 12 August 2019), 1992.
- Rutter, E. H. and Brodie, K. H.: The Permeation of Water into Hydrating Shear Zones, pp. 242–250., 1985.
- Schmid, S. M.: Microfabric studies as indicators of deformation mechanisms and flow laws operative in mountain building., 900 *Mt. Build. Process.*, (May), 95–110, 1982.
- Schroeder, T. and John, B. E.: Strain localization on an oceanic detachment fault system, Atlantis Massif, 30°N, Mid-Atlantic Ridge, *Geochemistry, Geophys. Geosystems*, 5(11), doi:10.1029/2004GC000728, 2004.
- Silverstone, J., Morteani, G. and Staude, J.-M.: Fluid channelling during ductile shearing: transformation of granodiorite into

- aluminous schist in the Tauern Window, Eastern Alps, *J. Metamorph. Geol.*, 9(4), 419–431, doi:10.1111/j.1525-905 1314.1991.tb00536.x, 1991.
- Shelley, D.: Spider texture and amphibole preferred orientations, *J. Struct. Geol.*, 16(5), 709–717, doi:10.1016/0191-8141(94)90120-1, 1994.
- Skemer, P., Katayama, I., Jiang, Z. and Karato, S.: The misorientation index: Development of a new method for calculating the strength of lattice-preferred orientation, *Tectonophysics*, 411(1–4), 157–167, doi:10.1016/J.TECTO.2005.08.023, 2005.
- 910 Skogby, H.: Water in natural mantle minerals I: Pyroxenes, in *Water in Nominally Anhydrous Minerals*, vol. 62, pp. 155–168, Walter de Gruyter GmbH., 2006.
- Soret, M., Agard, P., Ildefonse, B., Dubacq, B., Prigent, C. and Rosenberg, C.: Deformation mechanisms in mafic amphibolites and granulites: Record from the Semail metamorphic sole during subduction infancy, *Solid Earth*, 10(5), 1733–1755, doi:10.5194/se-10-1733-2019, 2019.
- 915 Stünitz, H. and Fitz Gerald, J. D.: Deformation of granitoids at low metamorphic grades: II. Granular flow in albite rich mylonites, *Tectonophysics*, 221, 299–324, doi:10.1016/0040-1951(93)90164-F, 1993.
- Stünitz, H. and Tullis, J.: Weakening and strain localization produced by syn-deformational reaction of plagioclase, *Int. J. Earth Sci.*, 90(1), 136–148, doi:10.1007/s005310000148, 2001.
- Sundberg, M. and Cooper, R. F.: Crystallographic preferred orientation produced by diffusional creep of harzburgite: Effects of chemical interactions among phases during plastic flow, *J. Geophys. Res. Solid Earth*, 113(12), doi:10.1029/2008JB005618, 920 2008.
- Svahnberg, H. and Piazzolo, S.: Interaction of chemical and physical processes during deformation at fluid-present conditions: A case study from an anorthosite-leucogabbro deformed at amphibolite facies conditions, *Contrib. to Mineral. Petrol.*, 165(3), 543–562, doi:10.1007/s00410-012-0822-9, 2013.
- 925 Tasaka, M., Zimmerman, M. E. and Kohlstedt, D. L.: Evolution of the rheological and microstructural properties of olivine aggregates during dislocation creep under hydrous conditions, *J. Geophys. Res. Solid Earth*, 121(1), 92–113, doi:10.1002/2015JB012134, 2016.
- Tasaka, M., Zimmerman, M. E., Kohlstedt, D. L., Stünitz, H. and Heilbronner, R.: Rheological Weakening of Olivine + Orthopyroxene Aggregates Due To Phase Mixing: Part 2. Microstructural Development, *J. Geophys. Res. Solid Earth*, 122(10), 7597–7612, doi:10.1002/2017JB014311, 930 2017.
- Tullis, J., Yund, R. and Farver, J.: Deformation-enhanced fluid distribution in feldspar aggregates and implications for ductile shear zones, *Geology*, 24(1), 63–66, doi:10.1130/0091-7613(1996)024<0063:defdif>2.3.co;2, 1996.

- Vissers, R. L. M., Drury, M. R., Newman, J. and Fliervoet, T. F.: Mylonitic deformation in upper mantle peridotites of the North Pyrenean Zone (France): implications for strength and strain localization in the lithosphere, *Tectonophysics*, 279(1–4), 303–325, doi:10.1016/S0040-1951(97)00128-5, 1997.
- 935
- Warren, J. M. and Hirth, G.: Grain size sensitive deformation mechanisms in naturally deformed peridotites, *Earth Planet. Sci. Lett.*, 248(1–2), 423–435, doi:10.1016/j.epsl.2006.06.006, 2006.
- Wenk, H.-R. and Christie, J. M.: Comments on the interpretation of deformation textures in rocks, *J. Struct. Geol.*, 13(10), 1091–1110, doi:10.1016/0191-8141(91)90071-P, 1991.
- 940
- Wheeler, J.: Importance of pressure solution and coble creep in the deformation of polymineralic rocks, *J. Geophys. Res.*, 97(B4), 4579, doi:10.1029/91JB02476, 1992.

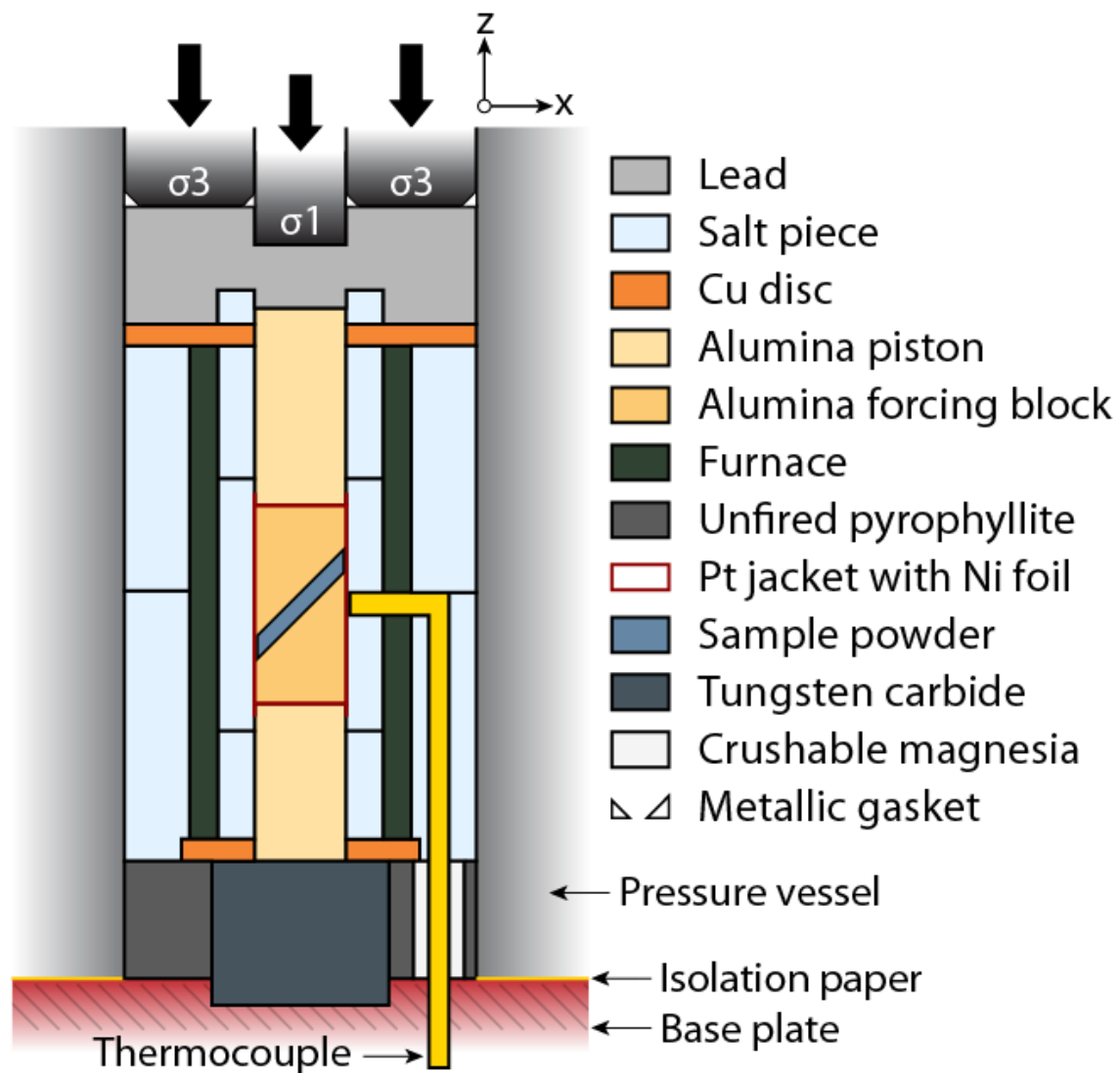
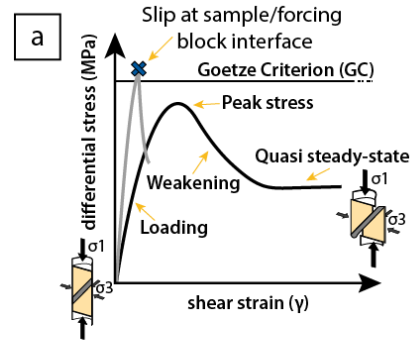


Figure 1: Drawing of the sample assembly in the Griggs-type apparatus.

945

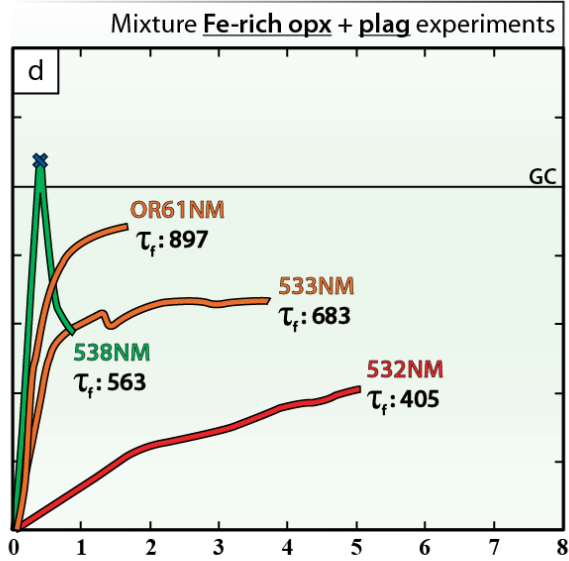
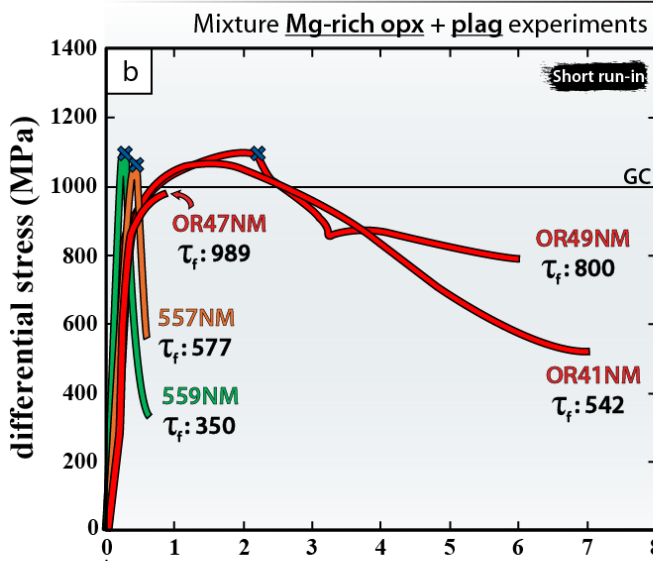
950

955



Temperature: 800-850-900°C
 Pressure: 1 GPa -- Strain rate: 10^{-5} s^{-1}

960



965

970

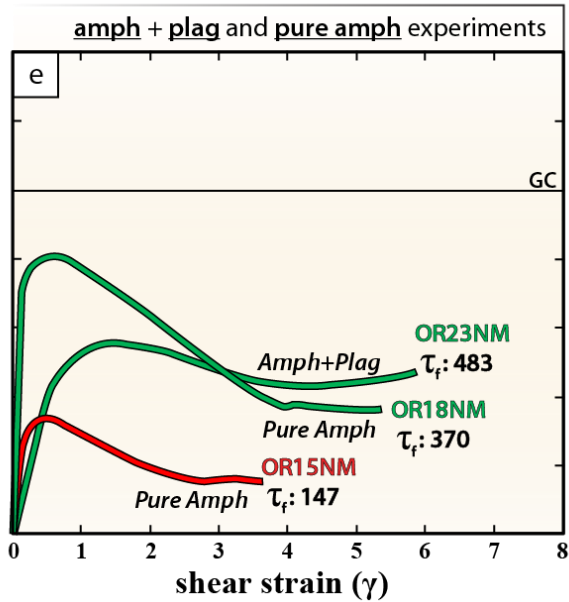
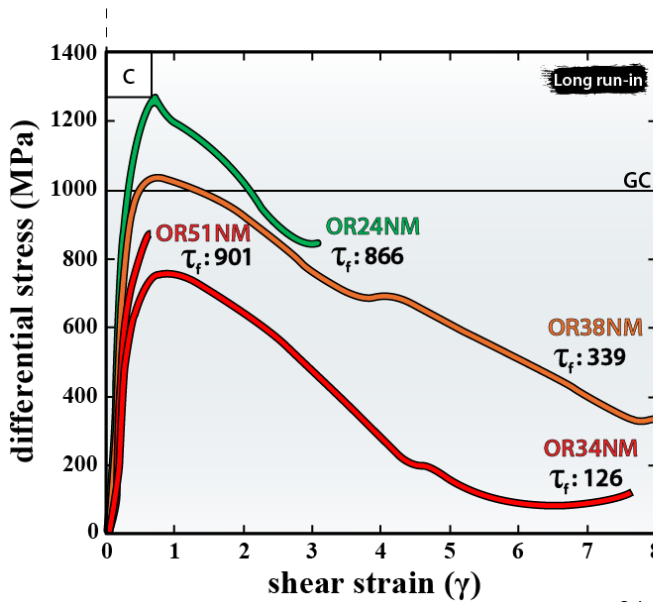


Figure 2: Mechanical data. (a) Terms used to describe the different stages of an experiment. (b-c) Differential stress (MPa) versus shear strain (γ) showing the mechanical behavior of the Mg-rich opx + plag assemblages deformed at temperatures ranging from 800 to 900 °C, at constant confining pressure of 1 GPa and strain rate of 10^{-5} s^{-1} . The difference between (b) and (c) is related to the different duration of the “run-in” section, i.e. time spent at P-T conditions before the hit point. Mechanical data for Fe-rich opx + plag (d), amph + plag and pure amph (e) assemblages are also plotted in stress-strain graphs. opx = orthopyroxene, pl = plagioclase, amph = amphibole.

985

990

995

1000

1005

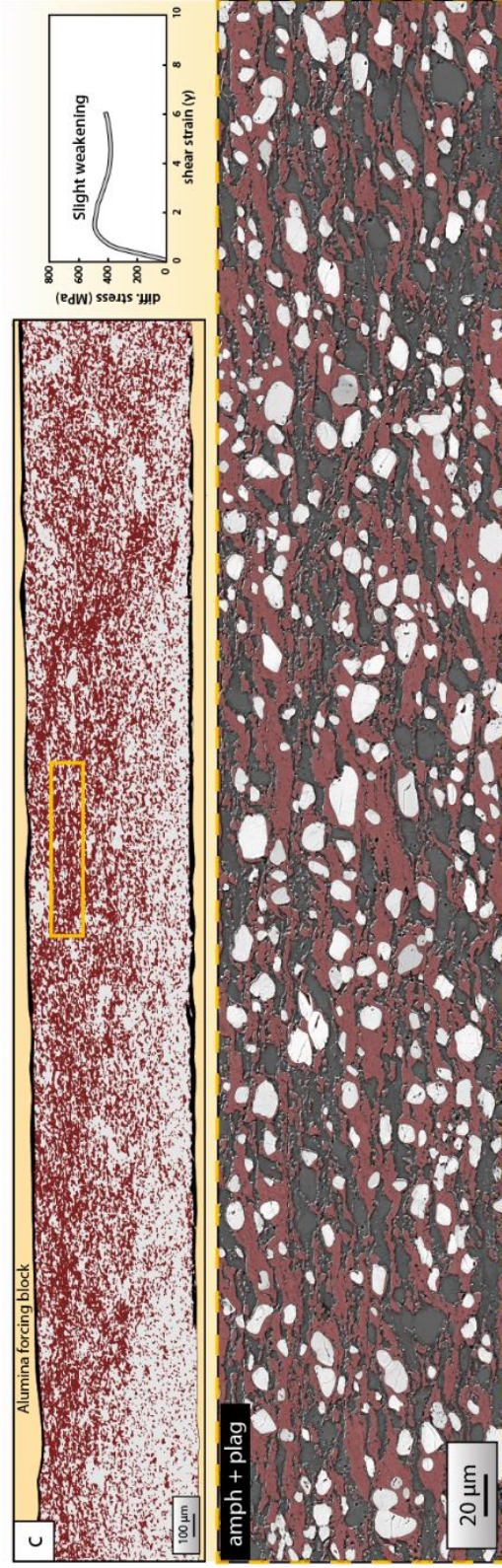
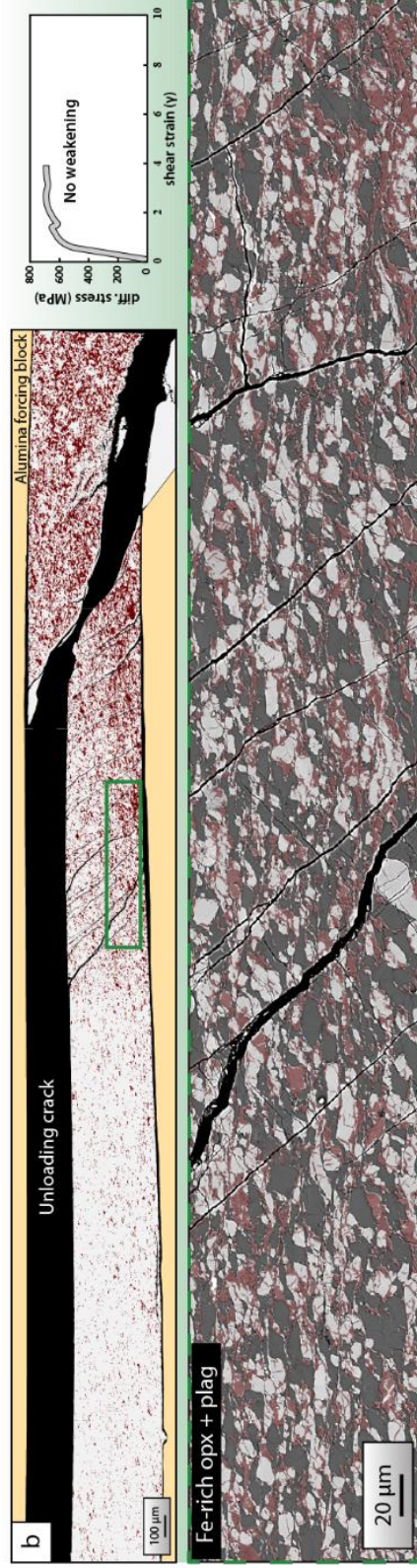
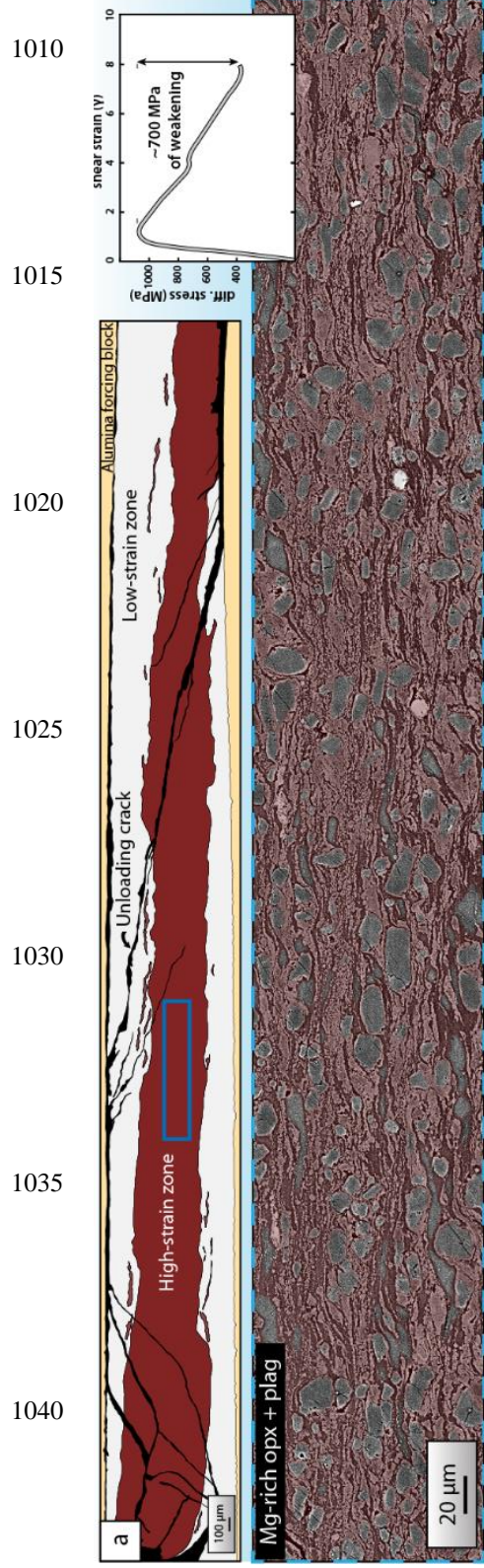


Figure 3: Distribution of reaction products after deformation in the Mg-rich opx + plag (a), Fe-rich opx + plag (b), and amph + plag (c) assemblages. For each assemblage, a manually digitized overview of the shear zone is associated with a zoomed part of it. The mechanical data associated to these assemblages are also represented in stress-strain graphs.

1050

1055

1060

1065

1070

1075

1080

1085

1090

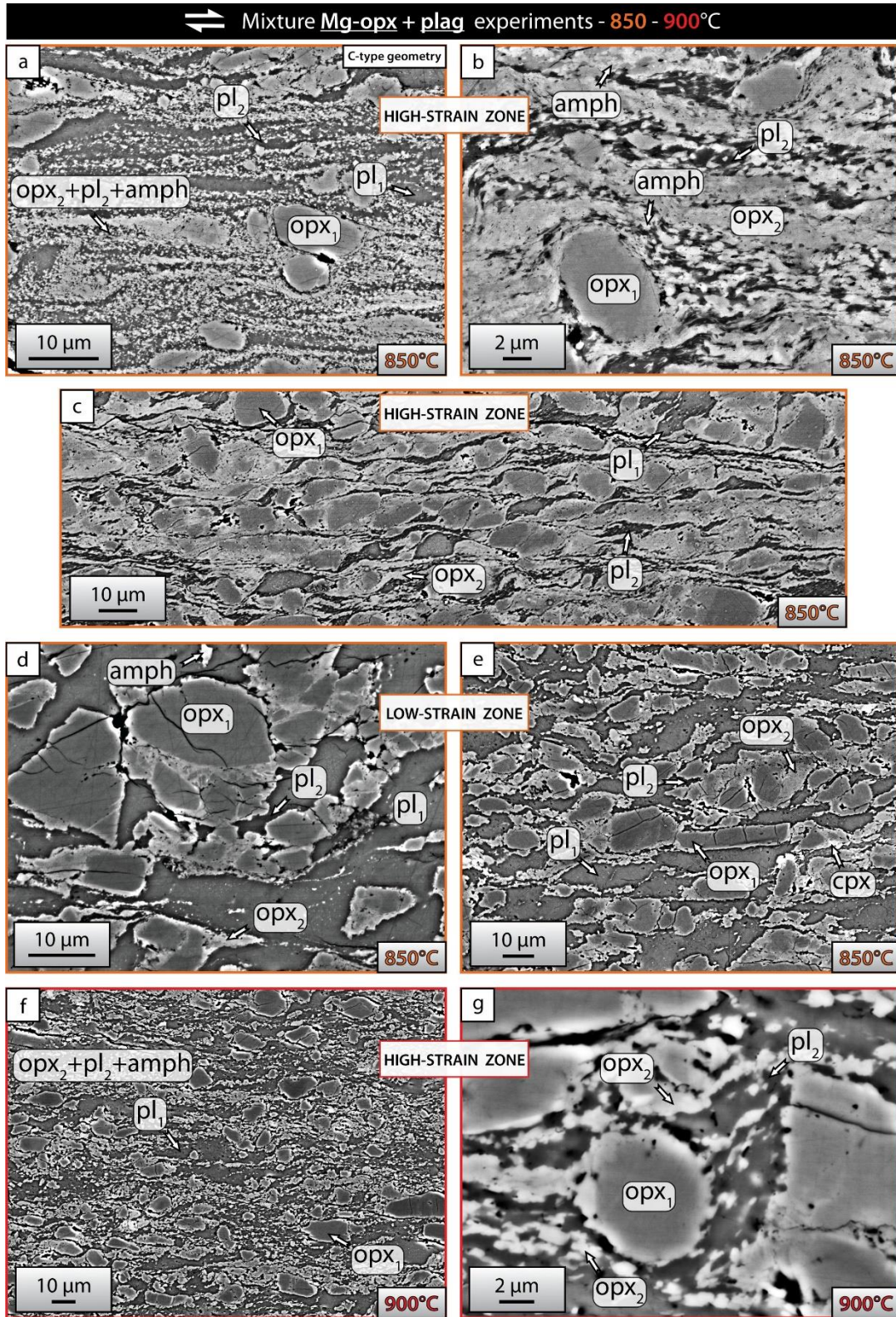


Figure 4: SEM-BSE images representative of microstructures observed in deformed Mg-rich opx + plag assemblages. opx₂ and plag₂ are the main reaction products. (a-b) At 850 °C, mineral reactions are mainly localized in the high-strain zones in the form of fine-grained mixed zones. (c) The original plag₁ almost completely disappears. (d) In low-strain zones, the reaction products appear as coronas around the original opx₁ and as aggregates. (e) opx₁ is locally fractured and filled with reaction products. (f-g) Similar microstructures are observed at 900 °C, although deformation is less localized compared to the assemblage deformed at 850 °C. opx = orthopyroxene, pl = plagioclase, amph = amphibole.

1100

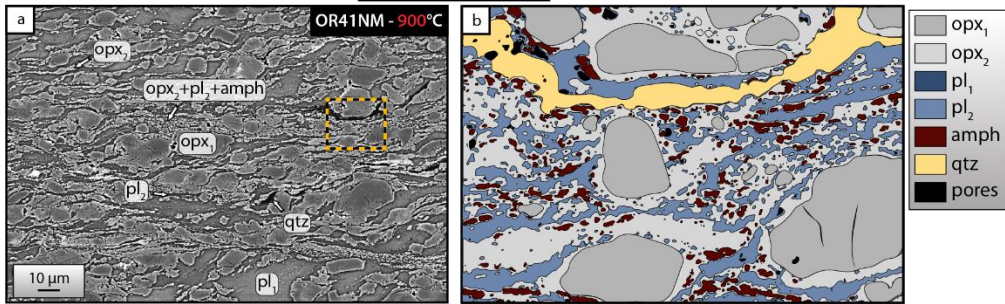
1105

1110

1115

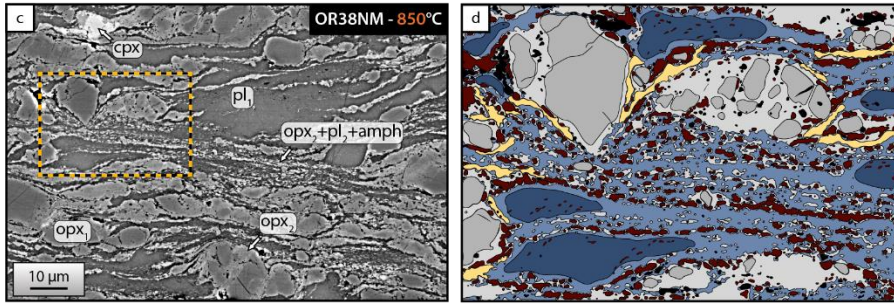
1120

1125

Mg-rich opx + Plag

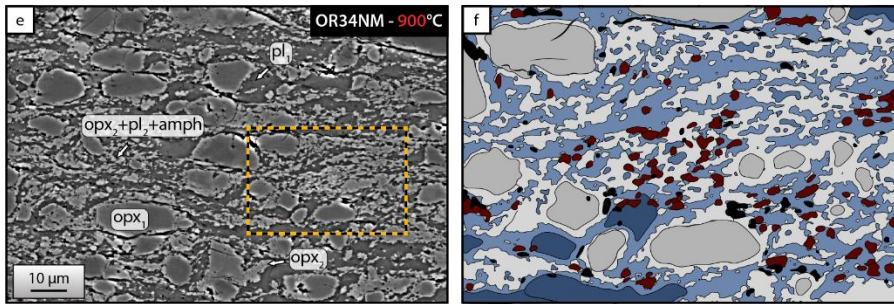
1130

1135

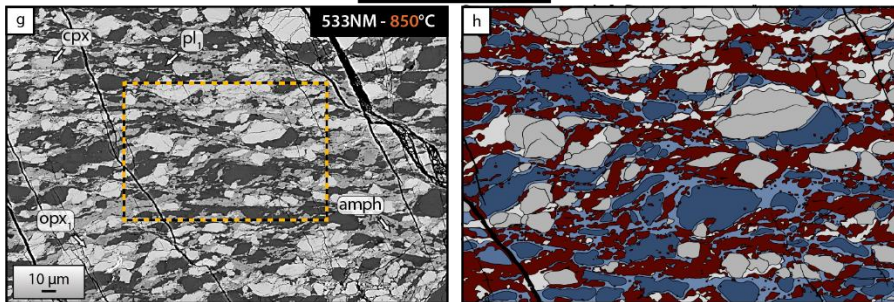


1140

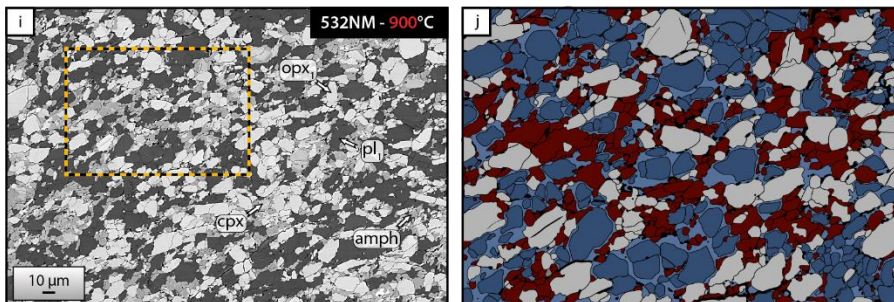
1145

**Fe-rich opx + plag**

1150

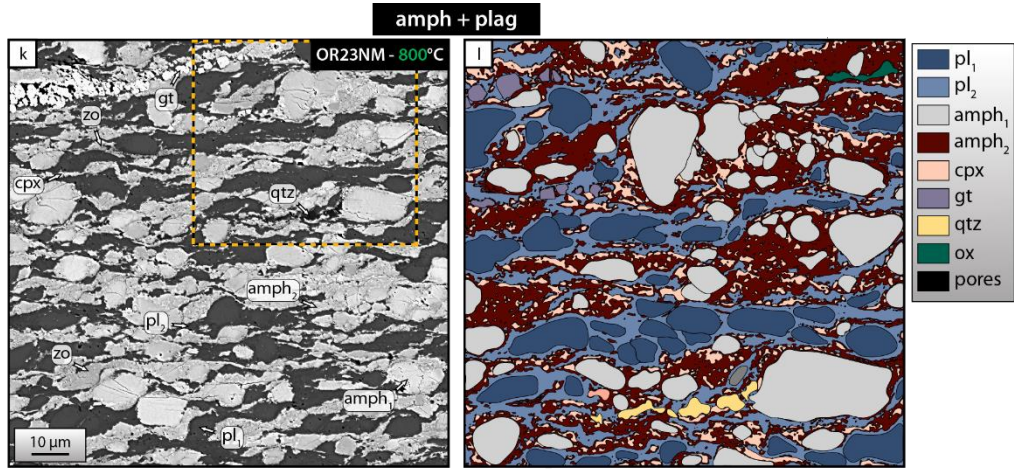


1155

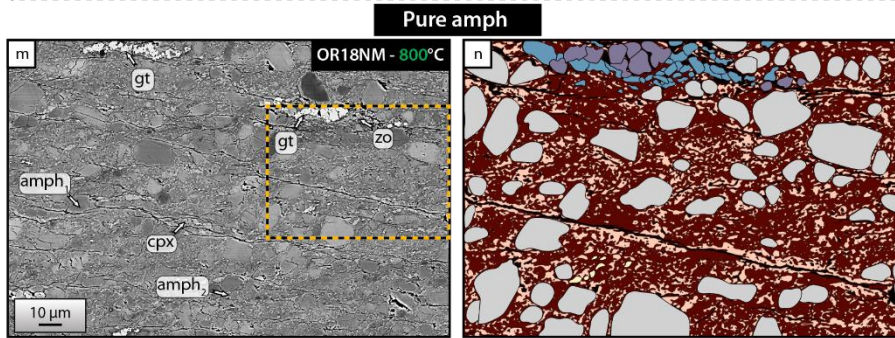


1160

1165



1170



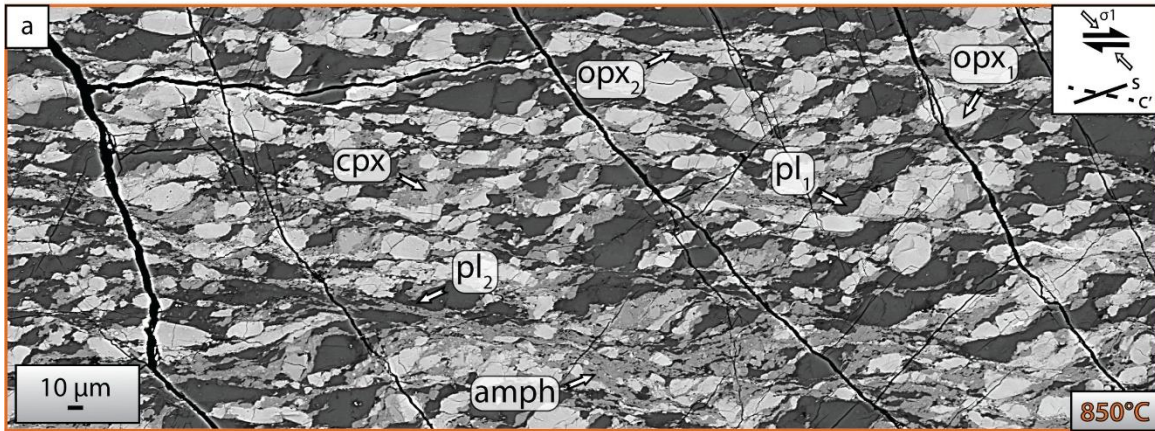
1175

Figure 5: SEM-BSE images representative of the different small-scale microstructures encountered in the assemblages and their respective manually digitized phase maps. Please note that the resolution is too low to resolve the full extent of phase mixing. opx = orthopyroxene, cpx = clinopyroxene, pl = plagioclase, amph = amphibole, qtz = quartz, gt = garnet, zo = zoisite.

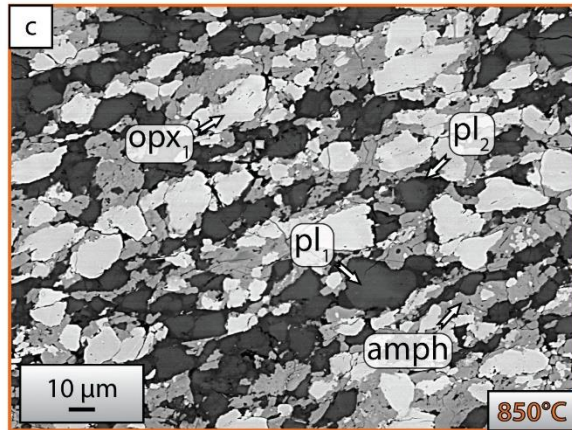
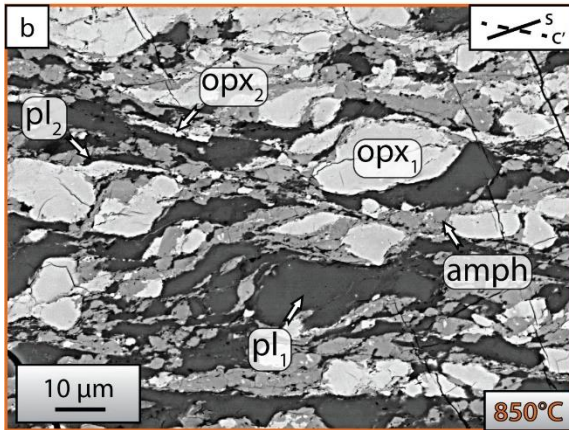
1180

⇌ Mixture Fe-rich opx + plag experiments - 850 - 900°C

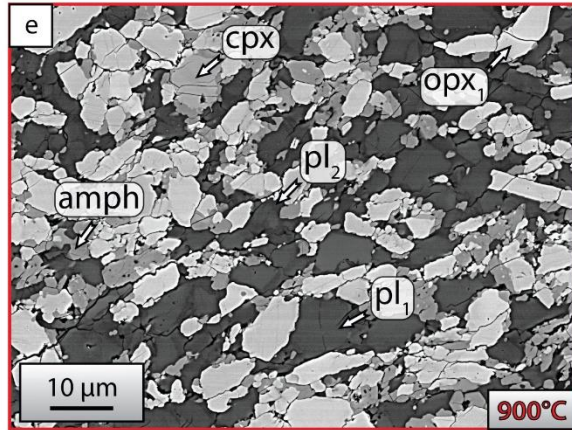
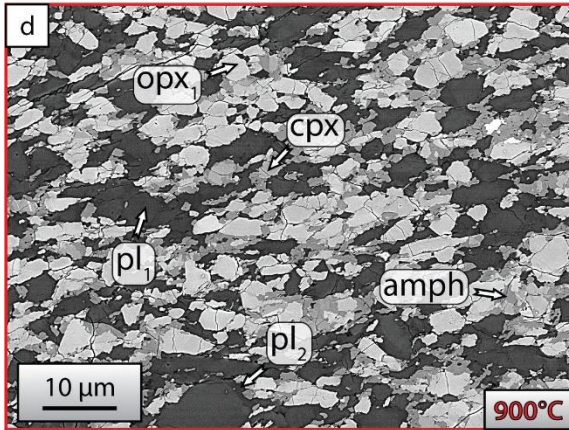
1185



1190



1195



1200

1205

Figure 6: SEM-BSE images representative of microstructures documented in deformed Fe-rich opx + plag assemblages. Amph and plag₂ are the main reaction products. At 850 °C, the deformation is heterogeneously distributed, and a strain gradient is clearly apparent at sample scale. (a-b) In strongly deformed parts, the amph appears as partially connected shear bands, while in the other parts (c) it appears as thick coronas around the opx₁ and plag₁ clasts. (e-f) At 900 °C, the deformation is more homogeneously distributed, and the reaction products appear as reaction coronas. opx = orthopyroxene, cpx = clinopyroxene, pl = plagioclase, amph = amphibole.

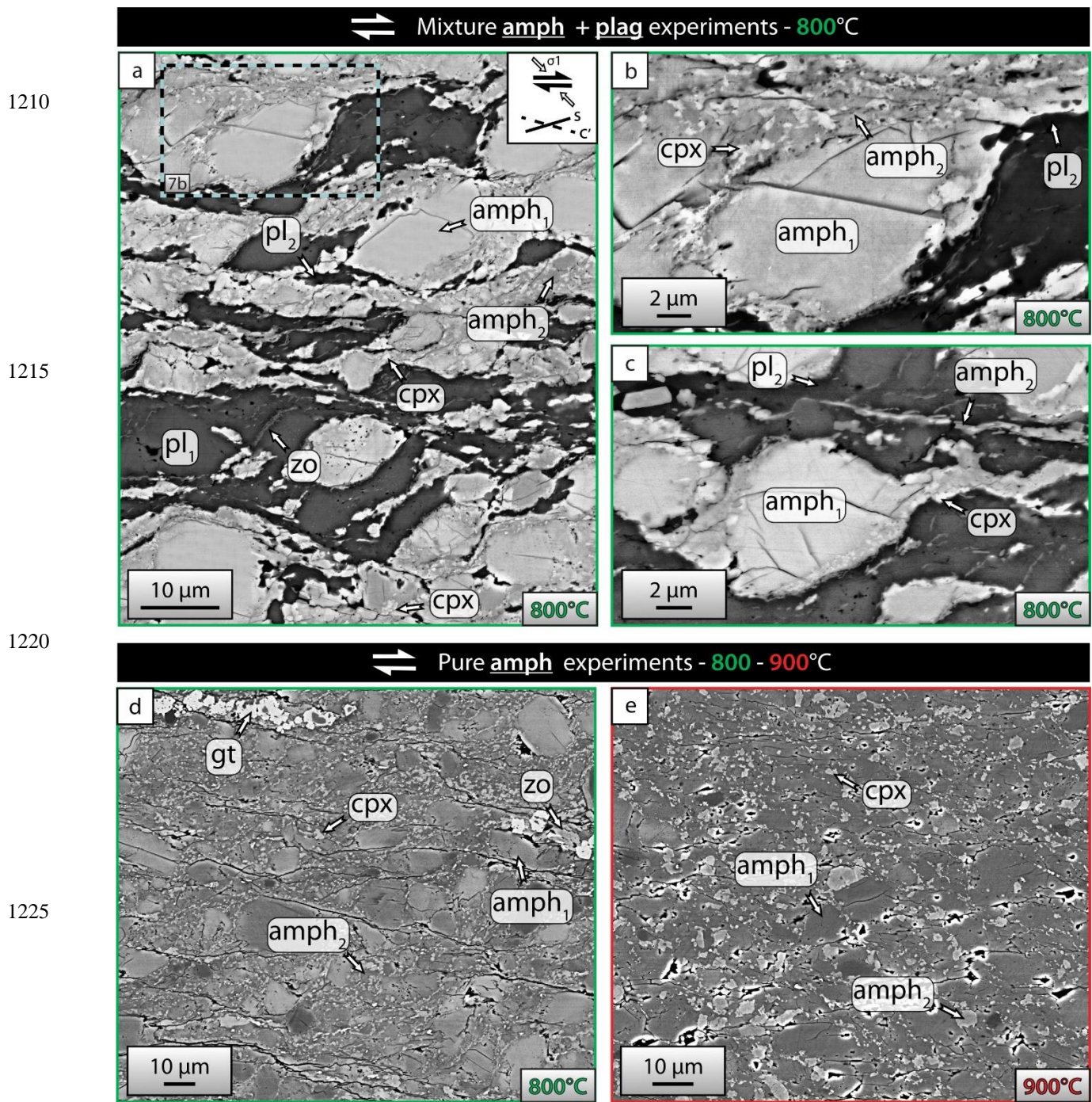
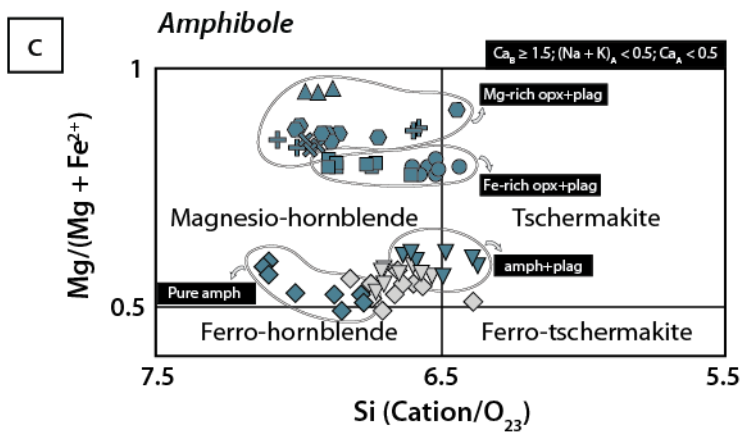
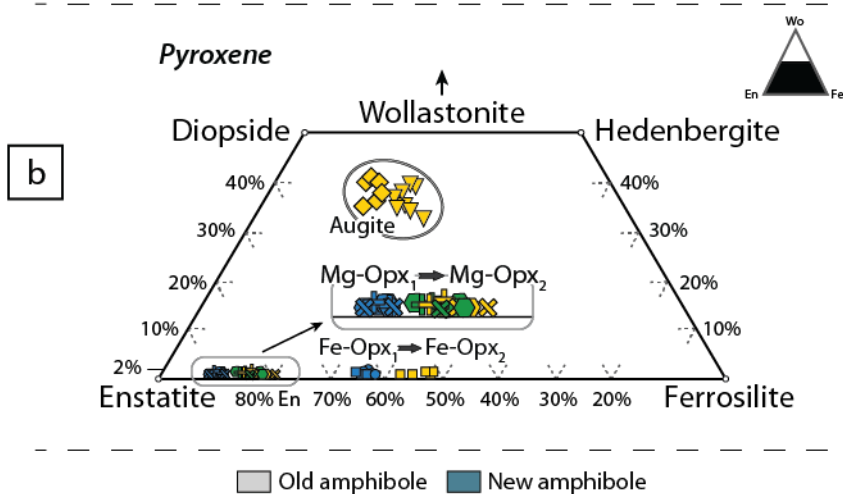
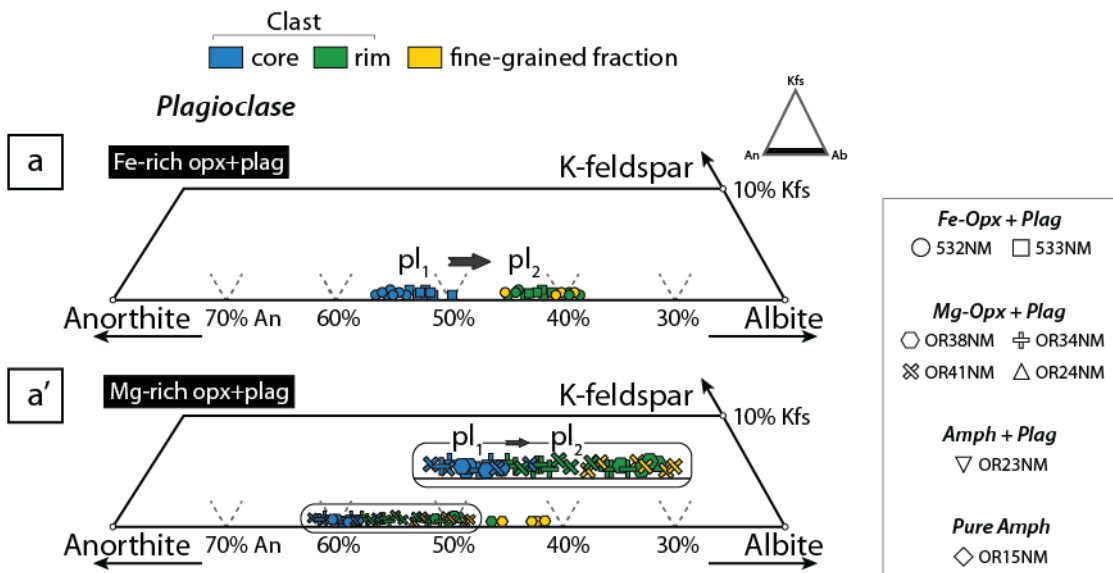


Figure 7: SEM-BSE images representative of microstructures shown in deformed amph + plag and pure amph assemblages. (a-b-c) Nucleation of amphibole-rich layers in the amphibole + plagioclase assemblage deformed at 800 °C. (d-e) The pure amphibole assemblages deformed at 800 °C and 900 °C show the development of fine-grained mixture zones of amphibole₂ and clinopyroxene. opx = orthopyroxene, cpx = clinopyroxene, pl = plagioclase, amph = amphibole, gt = garnet, zo = zoisite.



1235 **Figure 8:** Mineral composition plots. Plagioclase compositions in the Fe-rich opx + plag (a) and Mg-rich opx + plag (b) assemblages plotted on the ternary diagram of orthoclase (KAlSi_3O_8), albite ($\text{NaAlSi}_3\text{O}_8$) and anorthite ($\text{CaAlSi}_3\text{O}_8$). (c) Pyroxene compositions plotted on the ternary diagram of wollastonite ($\text{Ca}_2\text{Si}_2\text{O}_6$), enstatite ($\text{Mg}_2\text{Si}_2\text{O}_6$) and ferrosilite ($\text{Fe}_2\text{Si}_2\text{O}_6$). Chemical composition of plagioclase and pyroxene are divided into three subsets: clast-core, clast-rim and fine grains. (d) Classification of amphiboles in a $\text{Mg}/(\text{Mg} + \text{Fe}^{2+})$ versus Si content graph, for the case of $\text{Ca} \geq 1.5$; $(\text{Na} + \text{K})_{\text{A}} < 0.5$; $\text{Ca}_{\text{A}} < 0.5$.

1240

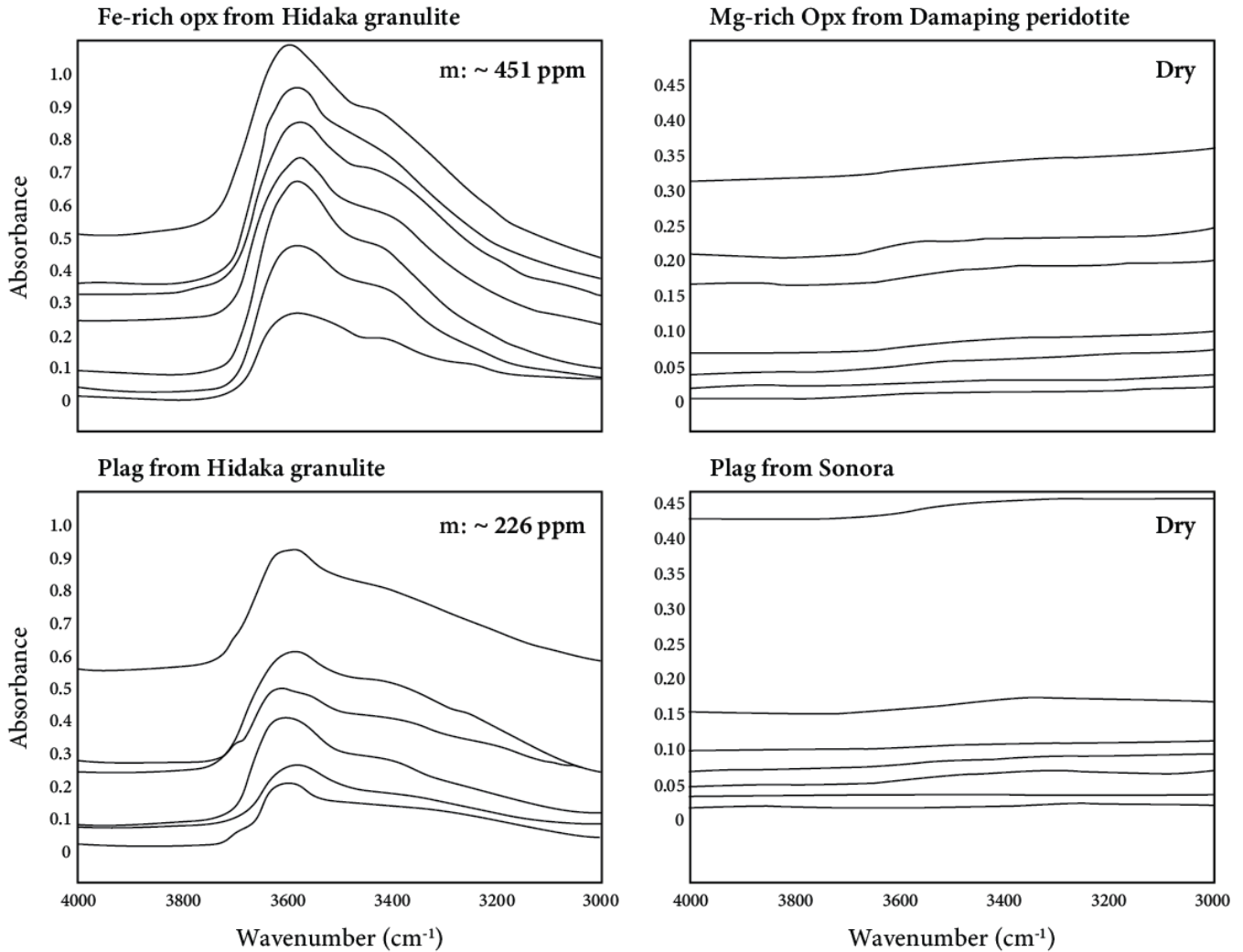


Figure 9: Representative Fourier transform infrared (FTIR) spectra of orthopyroxene and plagioclase starting materials. m = average water content.

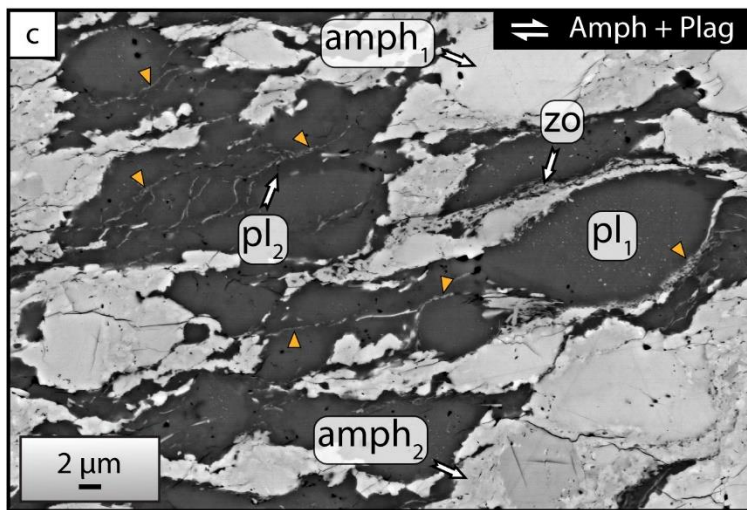
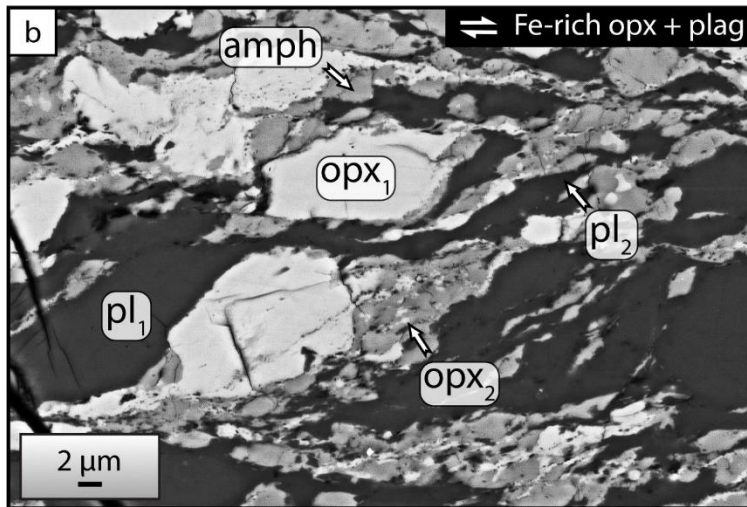
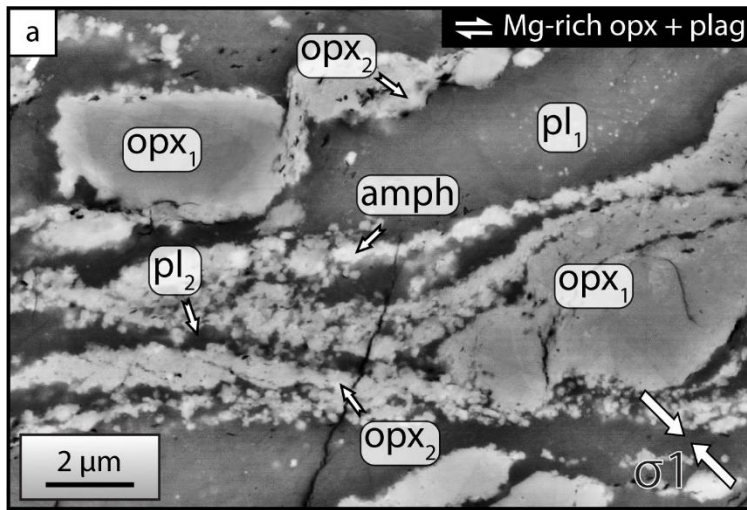


Figure 10: SEM-BSE images of incipient nucleation and shear localization. (a) In the Mg-rich opx + plag assemblages, fine-grained tails of mixed phases nucleate at the edges of original grains. In the Fe-rich opx + plag (b) and amph + plag (c) assemblages, the nucleation is fairly monophasic. The new grains tend to organize into anastomosing network of thin amphibole and zoisite (orange triangle). opx = orthopyroxene, pl = plagioclase, amph = amphibole, zo = zoisite.

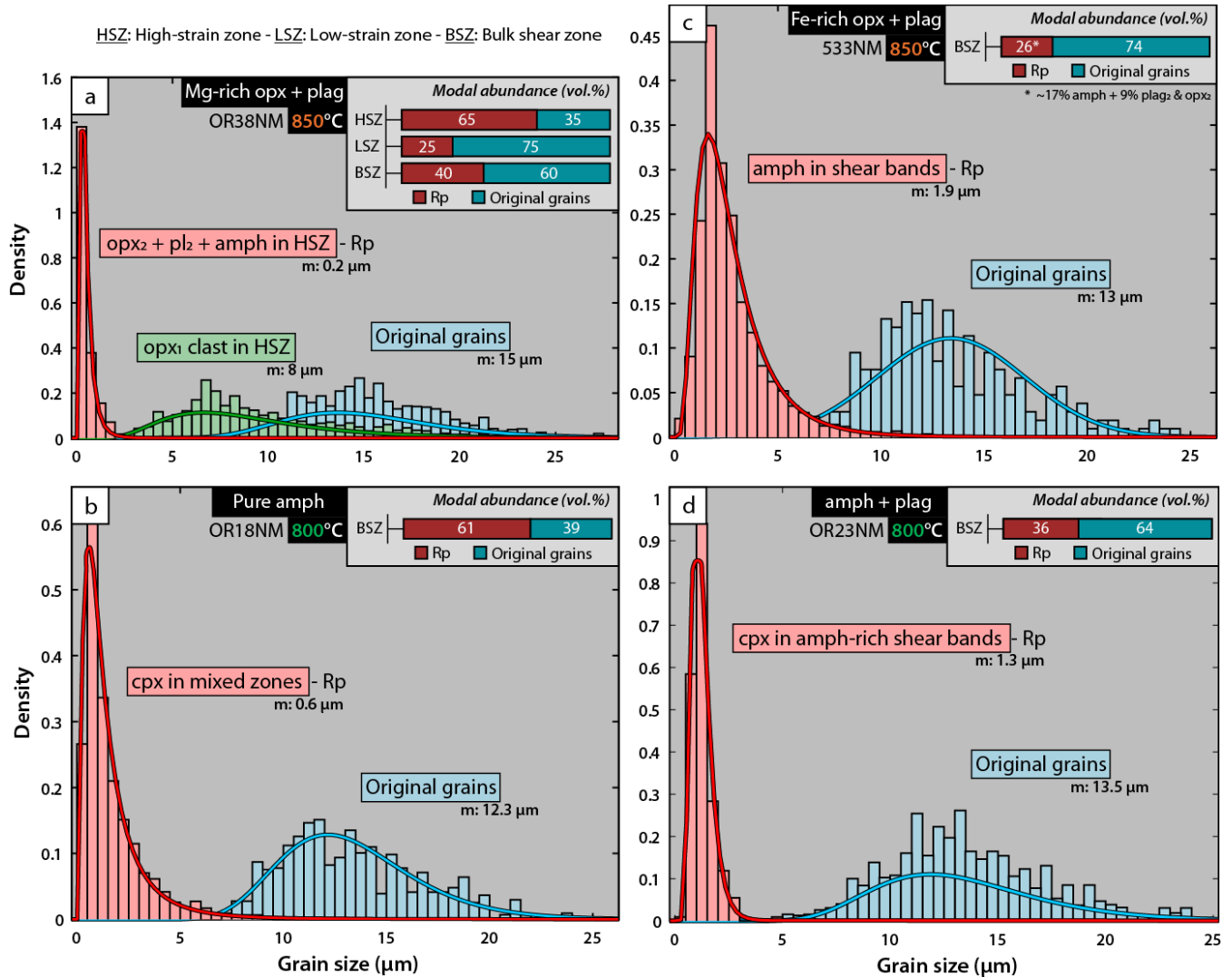
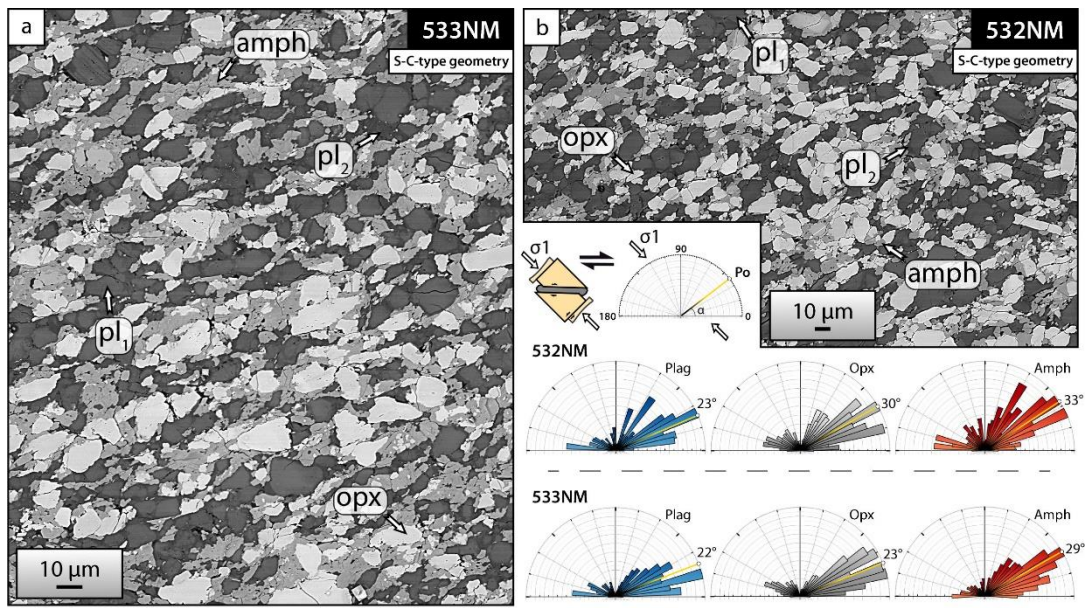


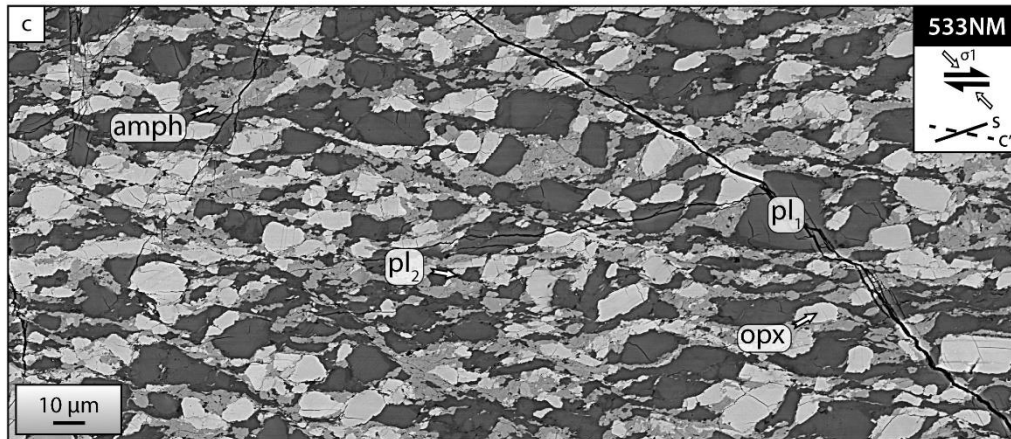
Figure 11: Grain size distribution reported as histogram of grain size versus density for different category of grains in the Mg-rich opx + plag (a), pure amph (b), Fe-rich opx + plag (c), and amph + plag (d) assemblages. Overall, there is a significant and systematic reduction in grain size between the original grains and the reaction products. The log normal distribution curves are fit for each grain size distribution. The modal proportion (vol.%) of reaction products and original grains of each assemblage are also reported.

1260

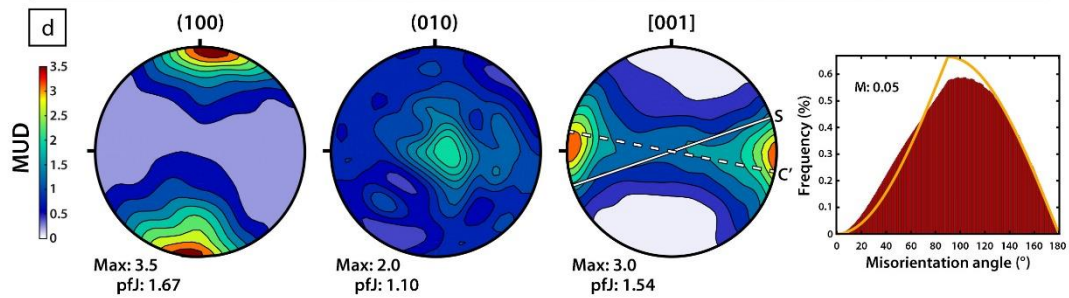
1265



1270

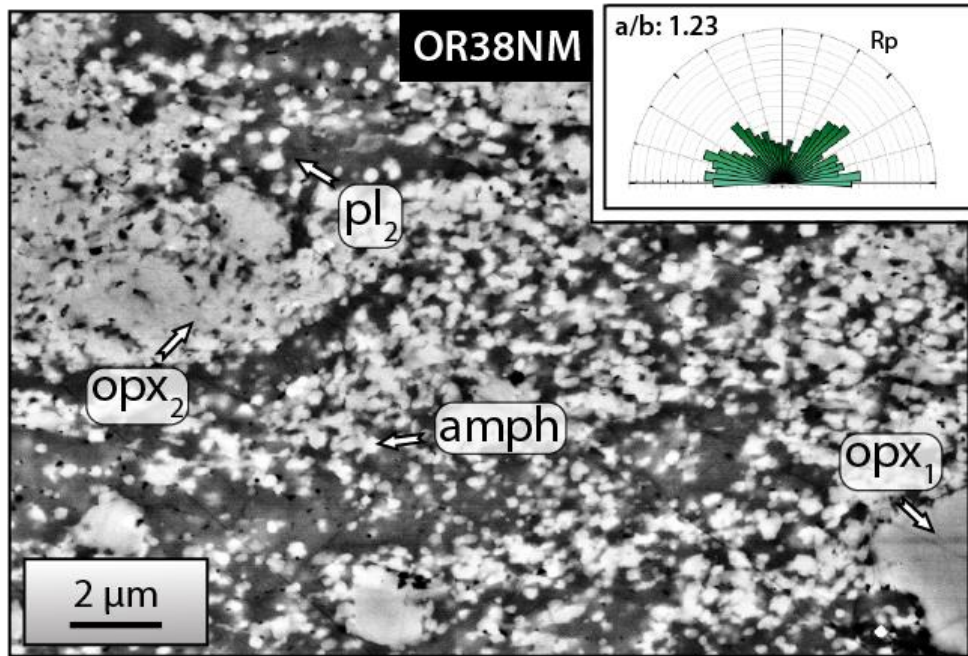


1275



1280

Figure 12: SPO and Amph LPOs in the Fe-rich opx + plag assemblages. (a-b) Rose diagrams of the SPO of plag₁, opx₁ and amph (a: 533NM—850 °C and b: 532NM—900 °C). (c) Strongly deformed part of the Fe-rich opx + plag assemblage deformed at 850 °C. (d) Amph LPOs are shown for the (100) plane, (010) plane and [001] axis with respect to the shear direction, considering one point per grain. Number of data: 365; step size: 100 nm; average grain size of amphibole: 4.1 μm. pfJ = pole figure texture index, MUD = multiple of uniform distribution, opx = orthopyroxene, pl = plagioclase, amph = amphibole.



1285 **Figure 13:** Rose diagram of the SPO of undifferentiated reaction products in fine-grained mixed zones in the Mg-rich opx + plag assemblages. opx = orthopyroxene, pl = plagioclase, amph = amphibole.

1290

1295

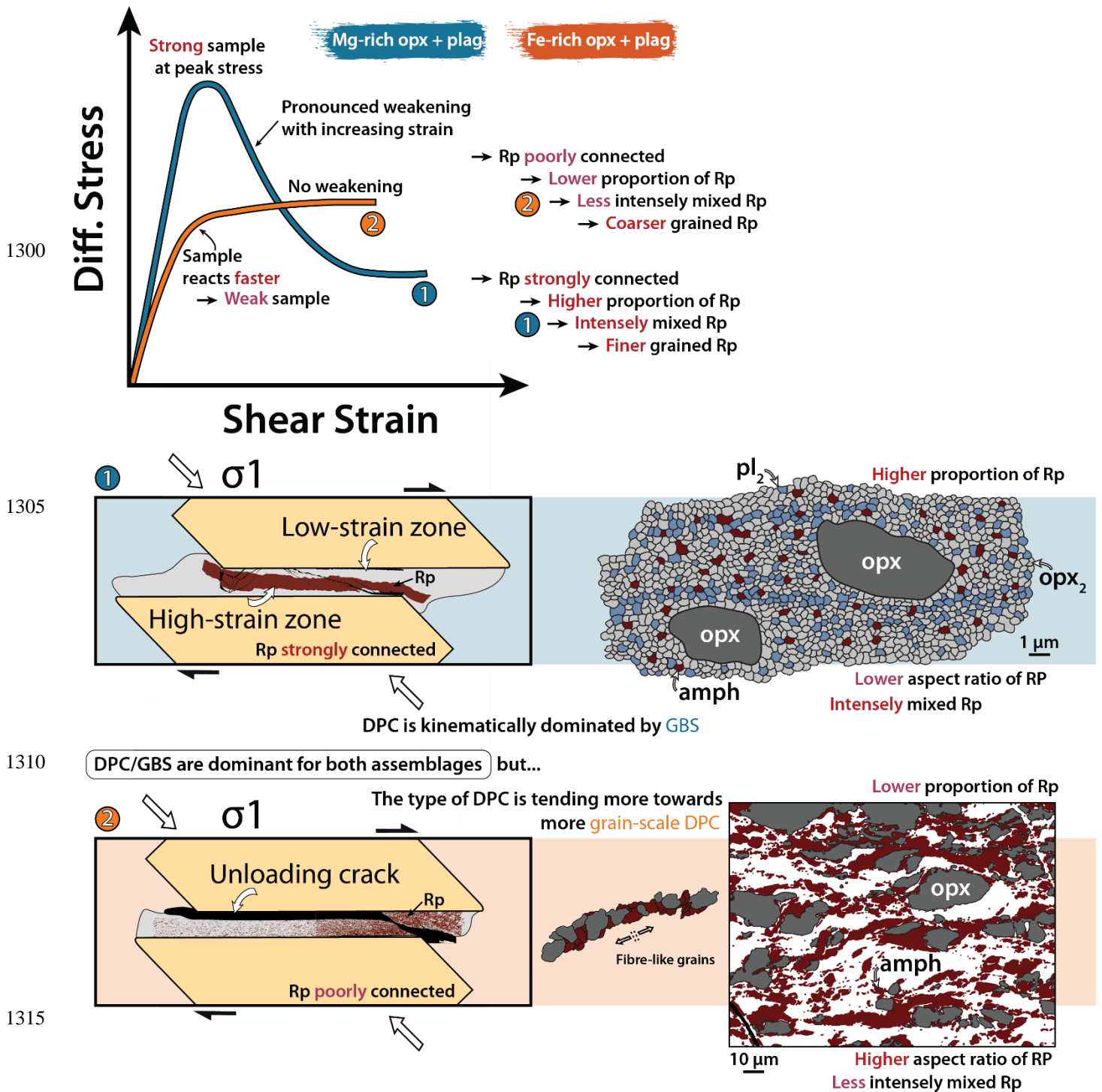


Figure 14: Schematic mechanical and microstructural evolution of the deformed Mg-rich opx + plag and Fe-rich opx + plag assemblages.

Rp = reaction product, opx = orthopyroxene, pl = plagioclase, amph = amphibole.

| 1320 | Sonora plag | | Damaping Mg-opx | | |
|------|--------------------------------|-------------|-----------------|-------------|-------|
| | Wt. % oxides | Ions per 8O | Wt. % oxides | Ions per 6O | |
| | SiO ₂ | 53,87 | 2,434 | 55,71 | 1,929 |
| | Al ₂ O ₃ | 29,41 | 1,566 | 3,81 | 0,155 |
| | CaO | 11,68 | 0,565 | 0,42 | 0,016 |
| | Na ₂ O | 4,06 | 0,356 | 0,07 | 0,005 |
| 1325 | K ₂ O | 0,46 | 0,027 | 0,02 | 0,001 |
| | MgO | 0,09 | 0,006 | 32,51 | 1,678 |
| | TiO ₂ | 0,08 | 0,003 | 0,07 | 0,002 |
| | FeO | 0,38 | 0,014 | 7,21 | 0,209 |
| | MnO | 0,05 | 0,002 | 0,18 | 0,005 |
| | Total | 100,08 | 4,972 | 100,01 | 4,000 |
| 1330 | An60 | | Wo1 | | |
| | Ab38 | | En88 | | |
| | Or2 | | Fs11 | | |
| | Hidaka plag | | Hidaka Fe-opx | | |
| | Wt. % oxides | Ions per 8O | Wt. % oxides | Ions per 6O | |
| 1335 | SiO ₂ | 54,71 | 2,448 | 52,86 | 1,952 |
| | Al ₂ O ₃ | 29,28 | 1,544 | 1,00 | 0,044 |
| | CaO | 11,42 | 0,548 | 1,23 | 0,049 |
| | Na ₂ O | 4,94 | 0,429 | 0,06 | 0,004 |
| | K ₂ O | 0,22 | 0,013 | 0,02 | 0,001 |
| | MgO | 0,01 | 0,001 | 22,41 | 1,234 |
| | TiO ₂ | 0,00 | 0,000 | 0,21 | 0,006 |
| 1340 | FeO | 0,39 | 0,015 | 22,55 | 0,696 |
| | MnO | 0,09 | 0,003 | 0,46 | 0,014 |
| | Total | 100,06 | 5,000 | 100,80 | 4,000 |
| | An55 | | Wo2 | | |
| | Ab44 | | En62 | | |
| 1345 | Or1 | | Fs36 | | |

Massif Central Amph

1350

Wt. % oxides Ions per 23 O

| | | |
|--------------------------------|-------|--------|
| SiO ₂ | 43,99 | 6,646 |
| Al ₂ O ₃ | 9,91 | 1,765 |
| CaO | 11,12 | 1,800 |
| Na ₂ O | 1,67 | 0,489 |
| K ₂ O | 0,47 | 0,091 |
| MgO | 10,87 | 2,448 |
| TiO ₂ | 1,21 | 0,138 |
| FeO | 17,79 | 2,248 |
| MnO | 0,38 | 0,000 |
| Total | 97,41 | 15,625 |

1355

1360

Magnesiohornblende

Table 1: Chemical compositions of plagioclase, pyroxene and amphibole starting materials.

1365

1370

1375

| Exp. Nr | Material | Type | T | P | H ₂ O | τ_{peak} | τ_{flow} | τ_{end} | γ | Th ₀ | th _f | t |
|---------|---------------|-----------------|------|-------|------------------|----------------------|----------------------|---------------------|----------|-----------------|-----------------|-----|
| | | | [°C] | [Gpa] | μL | [MPa] | [MPa] | [MPa] | | [mm] | [mm] | [h] |
| 557NM | Mg-opx + plag | PS ^x | 850 | 1 | 0,12 | 1067 | - | 577 | 0,4 | 0,75 | 0,59 | 35 |
| 559NM | Mg-opx + plag | PS ^x | 800 | 1 | 0,12 | 1111 | - | 350 | 0,5 | 0,75 | 0,67 | 38 |
| OR24NM | Mg-opx + plag | D ^x | 800 | 1 | 0,25 | 1280 | - | 866 | 3,1 | 1,1 | 0,87 | 85 |
| OR34NM | Mg-opx + plag | D | 900 | 1 | 0,25 | 781 | 114 | 126 | 7,6 | 1,1 | 0,68 | 96 |
| OR38NM | Mg-opx + plag | D | 850 | 1 | 0,25 | 1037 | 339 | 339 | 8,0 | 1,1 | 0,63 | 83 |
| OR41NM | Mg-opx + plag | D | 900 | 1 | 0,25 | 1094 | 542 | 542 | 7,0 | 1,1 | 0,72 | 53 |
| OR47NM | Mg-opx + plag | PS | 900 | 1 | 0,25 | 989 | - | 989 | 0,6 | 1,1 | 0,91 | 25 |
| OR49NM | Mg-opx + plag | D ^x | 900 | 1 | 0,25 | 1111 | 800 | 800 | 6,0 | 1,1 | 0,73 | 68 |
| OR51NM | Mg-opx + plag | PS | 900 | 1 | 0,25 | 901 | - | 901 | 0,8 | 1,1 | 1 | 156 |
| 532NM | Fe-opx + plag | D | 900 | 1 | 0,12 | - | - | 405 | 5,0 | 0,75 | 0,54 | 38 |
| 533NM | Fe-opx + plag | D | 850 | 1 | 0,12 | 645 | 683 | 683 | 3,8 | 0,75 | 0,47 | 50 |
| 538NM | Fe-opx + plag | D ^x | 800 | 1 | 0,12 | 1080 | - | 563 | 0,9 | 0,75 | 0,73 | 28 |
| OR61NM | Fe-opx + plag | PS | 850 | 1 | 0,25 | 885 | - | 897 | 1,7 | 1,1 | 0,73 | 77 |
| OR15NM | amph | D | 900 | 1 | 0,20 | 348 | 147 | 147 | 3,7 | 0,9 | 0,62 | 104 |
| OR18NM | amph | D | 800 | 1 | 0,20 | 803 | 370 | 370 | 5,4 | 0,9 | 0,68 | 73 |
| OR23NM | amph + plag | D | 800 | 1 | 0,20 | 563 | 435 | 483 | 5,8 | 0,9 | 0,60 | 31 |

1380

Table 2: List of experiments and experimental conditions. Type: PS: peak stress, D: deformed samples to varying amounts of shear strain. A cross is added to the samples where the forcing blocks started to slip at the sample interface; τ_{peak} : differential stress at peak, τ_{flow} : steady-state differential stress, τ_{end} : differential stress at end of experiment, γ : shear strain, th₀: thickness initial of the shear zone, th_f: final shear zone thickness, t: time before hit point.

1385