

Together but separate: decoupled Variscan (late Carboniferous) and Alpine (Late Cretaceous - Paleogene) inversion tectonics in NW Poland

Piotr Krzywiec¹, Mateusz Kufrasa¹, Paweł Poprawa², Stanisław Mazur³, Małgorzata Koperska⁴, Piotr Ślemp⁴

¹Institute of Geological Sciences, Polish Academy of Sciences, ul. Twarda 51/55, 00-818 Warsaw, Poland

²Faculty of Geology, Geophysics and Environmental Protection, AGH University of Science and Technology, al. Mickiewicza 30, 30-059 Kraków, Poland

³Institute of Geological Sciences, Polish Academy of Sciences, ul. Senacka 1, 31-002 Kraków, Poland

⁴PGNiG S.A., Plac Staszica 9, 64-920 Piła, Poland

Correspondence to: Piotr Krzywiec (piotr.krzywiec@twarda.pan.pl)

Abstract. In Europe, formation of the Palaeozoic Variscan orogenic belt, and ~~then~~ the Mesozoic-Cenozoic Alpine-Carpathian orogenic belt led to a widespread inversion events within forelands of both orogenic domains. We used legacy 2D seismic data together with the newly acquired 3D seismic data that, for the first time, precisely imaged sub-Zechstein (i.e. sub-evaporitic) upper Palaeozoic successions in NW Poland in order to develop a quantitative, balanced 2D model of the late Palaeozoic – recent evolution of this area, characterised by a complex pattern of repeated extension and inversion. Four main tectonic phases have been determined: (1) Late Devonian – early Carboniferous extension and subsidence possibly related to extensional reactivation of Caledonian thrusts, (2) late Carboniferous inversion caused by the Variscan orogeny, (3) Permo-Mesozoic subsidence related to the development of the Polish Basin, and (4) its Late Cretaceous – Paleogene inversion. Variscan and Alpine structures form a superimposed multilayer inversion system, mechanically decoupled along by the Zechstein evaporites.

1 Introduction

Inversion tectonics has been intensely studied since the early 1980s¹, when a fully developed concept of sedimentary basin inversion, exemplified by a tectonic graben bounded by deeply rooted normal faults subsequently reactivated as reverse faults or thrusts, was formulated (Glennie and Boegner, 1981; Bally, 1984). During this period, numerous papers and two dedicated volumes ~~have been were~~ published in which the geometry and evolution of inversion structures in different geodynamic settings were discussed (Cooper and Williams, 1989; Buchanan and Buchanan, 1995). Published case studies, documented by surface and / or subsurface data and supported by results of, ~~were supplemented by numerous papers based on~~ analogue and numerical modelling studies that focused on dealt with the geometry of inversion systems, the role of

differential lithologies in the formation of inversion structures, the evolution of fracture systems and syn-inversion sedimentation (e.g. Bonini et al., 2011; Buitter and Pfiffner, 2003; Buitter et al., 2006; Cloetingh et al., 2008; Dooley and Hudec, 2020; Henk & Nemčok, 2008; Jagger and McClay, 2018; McClay, 1995; Mitra and Islam 1994; Panien et al., 2005, 2006).

Thanks to all this work, the scene for inversion tectonics seems to be fairly well set; there are, however, still some problems aspects that require further clarification. They also include crucial topics of inversion tectonics such as definition of inversion structures and their key characteristics. In fact, inversion structures come in various shapes and forms, and, despite all the studies briefly mentioned above, inversion tectonics could be quite differently understood. To some, it might be regarded as a very general process that leads to reduction of the accommodation space and, eventually, cessation – or i.e. inversion - of the entire sedimentary basin. The process that reduces tectonic subsidence, eventually bringing it to a halt and causing uplifts, might include reversal of basement normal faults that controlled localised tectonic subsidence as proposed in the classic model by Bally (1984). However, inversion tectonics could also involve other, sometimes very different processes such as salt movements, lithospheric buckling or isostatic adjustments (cf. Dewey, 1989; see also Kley, 2018; Krzywiec et al., 2018). Other, more “conservative” approach to inversion tectonics relies on the classic model by Bally (1984) that assumes (1) formation of tectonic half-graben bounded by normal fault(s) during extension, and (2) compressional reactivation of graben-bounding fault(s) and uplift of sedimentary infill deposited during extension (cf. also Cooper et al., 1989; Cooper and Warren, 2010, 2020; Tari et al., ~~2021~~2020; Williams et al., 1989; Fig. 1). In this model, a master normal fault is deeply rooted in the crystalline basement so its reactivation under regional compression could be regarded as “thick-skinned inversion tectonics” (cf. Brun & Nalpas 1996). An extensional phase is documented by divergent pattern of the growth strata that are-thickening towards the master fault. During inversion, formation of growth strata, characterized by local thinning, is focused above inversion anticlines that develop above the tip of inverted master fault (Fig. 1A). Well-documented examples of such deeply-rooted inversion structures include the Precambrian Calvert and Isa Basins from NE Australia (Gibson & Edwards 2020), the Devonian-Carboniferous Dnipro – Donetsk Basin (Maystrenko et al. 2003), the Triassic-Jurassic Lautaro Basin in N Chile (Martinez et al., 2012) or the Paleogene Song Hong and Beibuwan Basins in N Vietnam (Fyhn et al., 2018).

There are, however, numerous departures from this classic model of inversion tectonics. The most important difference might be the location of main basal detachment that can develop not within the crystalline basement, as proposed by Bally (1984), but within the pre-extensional sedimentary cover (Fig. 1B & 1C). A common situation in which such a location of the main detachment of an extensional–inversion system could be encountered is related to foreland thin-skinned fold-and-thrust belts, where major thrusts could be first reactivated as normal faults and then inverted due to regional compression (e.g. Di Domenica et al., 2014; Tavarnelli, 1999; Withjack et al., 2010). Thin- rather than thick-skinned character of inversion tectonics is in this case determined by a thin-skinned nature of the fold-and-thrust belt that undergoes reactivation

(cf. Ivins et al., 1990). It is ~~also~~ worth noting here that extensional reactivation of thrusts is often referred to as a “negative inversion”, in contrast to “positive inversion” associated with reverse reactivation of normal faults that was briefly described above (e.g. Chadwick and Smith, 1988; Del Ventisette et al., 2021; Krantz, 1991; Tari et al., 2021; Tortorici et al., 2019). In this case however “inversion” seems to be used as an equivalent of “extensional reactivation” which is much broader term that does not fully comply with the original concept of “inversion tectonics” coined by Bally (1984) (see also Holdsworth et al., 1997). Bally’s original model was not focused on inversion – i.e. reactivation – of basin-bounding faults but on inversion – i.e. partial or full destruction – of a sedimentary basin. Destruction of a sedimentary basin (half-graben) in Bally’s model is genetically linked to reactivation (reverse in this case) of a basin-bounding fault(s) but fault reactivation is a secondary process here while the main emphasis is on demise of half-graben formed during extensional phase (Bally, 1984). On the other hand, negative inversion might be related to formation, not destruction, of a new basin that develops above extensionally reactivated thrust (e.g. Babaahmadi et al., 2018; Constenius, 1982, 1996; Deng et al., 2021; Powell and Williams, 1989; Tari et al., 2021; Velasco et al., 2010). Taking this into account it seems appropriate to delimit usage of the term “inversion tectonics” to “positive inversion” as originally proposed by Bally (1984), and to abandon the term “negative inversion” that in fact is related to rather different tectonic scenario. End of the day, this is all a matter of terminology and definitions, and general consensus (or lack thereof) around them. Different opinions on that issue have been already expressed – for example, Cooper and Warren in their recent chapter (2020) provided short overview of various opinions on the term “negative inversion” and explicitly stated that it should be discarded. On the other hand, there are recently published important papers in which the term “negative inversion” has been successfully used to describe regional tectonic evolution of particular regions and formation of various structures within the Earth’s crust (e.g. Tari et al., 2021; Connors and Houseknecht, 2022). In this paper we follow our line of reasoning described above, describing inferred extensional reactivation (not negative inversion) of Caledonian thrusts in N Poland, formation of Upper Palaeozoic half-grabens and their subsequent inversion (see below).

The classic and relatively simple thin-skinned inversion scenario shown on Fig. 1B could be ~~further also greatly~~ complicated by lithological variations of the sedimentary infill formed prior to onset of inversion i.e., prior, during and after extension. The most obvious example of influence exerted by lithology on inversion tectonics is the presence of ductile evaporites that leads to partial or full mechanical decoupling and formation of sub- and supra-salt / evaporitic structures, often of different geometries and kinematics (e.g., Brun and Nalpas, 1996; Jackson and Larsen, 2008; Jackson et al., 2013; Dooley & Hudec 2020; Hansen et al., 2021). A model of thin-skinned inversion system detached above evaporites is shown on Fig. 1C. One important conclusion might be drawn from comparison of “classic” thick-skinned inversion system (Fig. 1A) and two thin-skinned inversion systems, one without evaporites (Fig. 1B) and one with evaporites (Fig. 1C) – that despite their fundamentally different structural characteristics at depth they all have the same shallower tectono-sedimentary expression with identical key elements of the inverted extensional system such as inversion anticline and syn-inversion growth strata. Taking this into account, it could be postulated that “classic” inversion scenario of extensional graben (sedimentary basin)

100 should not be restricted to basins with their bounding faults rooted within the crystalline basement and could equally well be also be applied to thin-skinned systems, either developed above ductile evaporites or simply located above thick pre-extensional sedimentary cover that prevented faulting deeply rooted within the crystalline basement during extension and subsequent inversion (see also Cooper and Warren, 2020).

105 In Europe, formation of the Palaeozoic Variscan orogenic belt, and then the Mesozoic-Cenozoic Alpine-Carpathian orogenic belt led to a widespread inversion events within forelands of both orogenic domains. Variscan (i.e., late Carboniferous) inversion is well documented in areas where either suitable outcrops of deformed Palaeozoic rocks are present or deeper seismic imaging is not hampered by a thick Upper Permian (Zechstein) evaporitic cover, such as for example Southern UK, or France and Belgium or N Germany (e.g. Chadwick and Evans, 2005; Pharaoh et al 2020; Deckers and Rombaut, 2021; von Hartmann, 2003). On the other hand, Alpine (i.e., Late Cretaceous – Paleogene) inversion is well documented by seismic reflection data that image usually complex supra-salt / supra-evaporitic thin-skinned structures that are however characterized by not always clear relationship to the sub-salt / sub-evaporitic deformations (e.g. Chadwick and Evans, 2005; Mazur et al., 2005; Krzywiec, 2006).

115 In this paper, we analyse complex inversion tectonics in NW Poland, where the superimposed effects of Variscan and Alpine foreland compression led to the formation of a multilayer decoupled inversion system. Our analysis is partly based on ~~the~~ a newly acquired high-quality 3D seismic data that provided unique, so far unavailable insight into the pre-Zechstein sedimentary cover. Geometry, kinematics and casual links between consecutive phases of extension / subsidence and compression / inversion are discussed in ~~a~~ the context of the regional Palaeozoic and Mesozoic evolution of Central and Eastern Europe.

2 Geological setting

The study area in NW Poland (Figs. 2-5) is located in ~~the~~ region, where crystalline basement is buried ~~very deep,~~ to a depth s exceeding 11 km, as documented by deep seismic refraction data and gravity-magnetic modelling studies (Guterch et al., 1999; Guterch and Grad, 2006; Grad and Polkowski, 2016; Mazur et al., 2021). This is also compatible with the results of deep seismic reflection surveying in the area adjacent to the east that documented the Caledonian orogenic front thrust over the undeformed lower Palaeozoic foreland and underlain by a lower plate that gradually descends towards the SW to a depth of at least 10 km (Krzywiec et al., 2014; cf. also Lazauskienė et al., 2002; Mazur et al., 2018; Poprawa, 2019, 2020; Poprawa et al., 1999). Structures analysed in this paper evolved above the frontal part of this deeply buried Caledonian thin-skinned orogenic belt (Mazur et al., 2016), below which the Precambrian suture of the Tisseyre – Tornquist Zone is located (Mazur et al., 2015).

The Caledonian orogenic belt in N Poland ceased to exist due to early Devonian uplift and widespread denudation (Dadlez, 1978; Poprawa, 2019). In the Variscan geological framework, the study area is located approximately 150 km NE from the front of the Variscan orogen that extends from south-western England across northern France, Belgium, northern Germany to Czech Republic, Poland and Western Ukraine, and then on to Romania, Bulgaria and Turkey (Fig. 2; e.g., Catalan et al., 2020; Franke, 2014; Kröner et al., 2008; Krzywiec and Kufrasa, submitted; Laurent et al., 2021; Mazur et al., 2020; Okay and Topuz, 2017; Warr, 2012). The most external part of the Variscan orogen i.e., the Rhenohercynian zone forms a foreland fold-and-thrust belt built of the deformed Devonian - Carboniferous sedimentary succession deposited along the southern margin of Laurussia and subjected to progressive thrusting and folding (Oncken et al. 1999). The final emplacement of the Variscan fold-and-thrust belt onto its foreland plate took place in the late Carboniferous (Kröner et al., 2008; Mazur et al., 2010, 2020). It led to the regional flexure of the foreland plate and formation of extensive Carboniferous foreland basin filled with a thick synorogenic sedimentary succession (Burgess and Gayer, 2000; Deckers and Rombaut, 2021; Franke, 2014; Kombrink et al., 2010; Leveridge and Hartley, 2006; Maynard et al., 1997; McCann, 1999; McCann et al., 2008; Narkiewicz, 2007, 2020; Opluštil and Cleal, 2007; Tomek et al., 2019). Final stages of evolution of the external Variscan fold-and-thrust belt were associated with a widespread inversion of Palaeozoic basins located within its foreland (e.g., Corfield et al., 1996; Glen et al., 2005; Peace & Besly, 1997; Pharaoh et al 2020; Shail & Leveridge 2009; Smith, 1999; von Hartmann, 2003). Until recently, no Variscan inversion structures have been recognized within the NE part of the Variscan foreland, including NW Poland, mainly because of low quality of sub-salt seismic imaging ~~from of~~ the sub-Zechstein interval. Relatively intense compressional deformations were documented in the area devoid of the Zechstein evaporitic cover in SE Poland and western Ukraine within the Lublin – Lviv Basin (Krzywiec et al., 2017a,b; Kufrasa et al., 2020; Tomaszczyk and Jarosiński, 2017; Zayats, 2015) and adjacent areas including the Holy Cross Mountains (e.g., Czarnocki, 1957; Lamarche et al., 1999; Konon 2006, 2007). However, they have been recently interpreted as belonging to the frontal Variscan fold-and-thrust belt rather than being foreland inversion structures ([see Krzywiec et al., 2017a,b; Kufrasa et al., 2020; Mazur et al., 2020 and references therein](#)).

The upper Palaeozoic sedimentary cover within the study area consists of the (upper Emsian–?) Middle Devonian to [lower Carboniferous](#) (Mississippian) sediments deposited within the Western Pomeranian Basin (Fig. 2, Fig. 3). This succession is composed of mainly clastic and carbonate sediments, with subordinate evaporites (Lipiec and Matyja, 1998; Narkiewicz, 2007, 2020; Narkiewicz et al., 1998; Matyja, 1993, 1998, 2006, 2008; Muszyński et al., 1996). Late Devonian – early Carboniferous formation of sedimentary cover of Western Pomerania could be associated with regional extension and subsidence along the Laurussia southern margin (Smit et al., 2018).

The Pennsylvanian in the Western Pomeranian Basin is developed only locally in the northern part of the basin (Żelichowski, 1995; Matyja, 2006; Kuberska et al., 2007). Also locally, uppermost Carboniferous to lowermost Permian volcanic rocks have been encountered by wells (Maliszewska et al., 2016).

The Variscan foreland basin ceased to exist in the latest Carboniferous due to regional post-orogenic uplift and erosion (Edel et al., 2018; McCann et al., 2006; Ziegler, 1990). This was followed by renewed subsidence and sedimentation related to formation of an extensive Permo-Mesozoic basin that covered the large part of Europe (Doornenbal & Stevenson, 2010, 170 Littke et al., 2008; Pharaoh et al., 2010; Scheck-Wenderoth et al., 2008; van Wees et al., 2000; Ziegler, 1990). The Polish Basin, together with its axial most subsiding part, the Mid-Polish Trough, formed the easternmost segment of this vast sedimentary basin (Dadlez et al., 1995; Stephenson et al. 2003; Ziegler, 1990). The Polish Basin underwent long-term Mesozoic thermal subsidence, punctuated by three major pulses of extension-related accelerated tectonic subsidence: during late Permian to Early Triassic times, in the Late Jurassic (Oxfordian to Kimmeridgian), and in the early Cenomanian (Dadlez 175 et al. 1995, Stephenson et al. 2003). Evolution of the NW and central segments of the Polish Basin, where a thick Zechstein evaporitic cover developed, was characterized by regional mechanical decoupling between the sub-Zechstein Rotliegend and older substratum and the Mesozoic supra-Zechstein cover (cf. Krzywiec, 2006a,b; 2021; Krzywiec et al., 2006). This led to formation of a system of peripheral extensional structures located above the basin margins', including grabens or half-grabens detached in evaporites, and salt structures (Krzywiec, 2002a, 2012; Rowan and Krzywiec, 2014; Warsitzka et al., 180 2021).

Deposition in the Polish Basin started with the Rotliegend (Wordian – Wuchiapingian) continental clastic sediments that, however, are not present in the study area as it was located within the marginal part of the basin (Kiersnowski, 1998; Kiersnowski and Buniak, 2006; Krzywiec et al., 2017c). The Permian sedimentary cover of the area analysed in this paper is 185 restricted to Zechstein (Wuchiapingian to Changshingian) evaporites (Wagner, 1994, 1998; Krzywiec et al., 2017c). They are overlain by a Triassic to Cretaceous clastic – carbonate sedimentary succession (cf. Dadlez and Marek, 1997; Krzywiec, 2006a; Ziegler, 1990).

The Polish Basin was inverted in the Late Cretaceous-Palaeogene (Dadlez et al., 1995, 1997; Głuszyński and 190 Aleksandrowski, 2021; Krzywiec, 2002b, 2006b; Krzywiec et al., 2009; Resak et al. 2008). This was associated with widespread inversion of the European foreland triggered by the Alpine-Carpathian collision and Iberia-Europe convergence (cf. Kley, 2018; Kley and Voigt, 2008; Kockel, 2003; Kossow and Krawczyk, 2002; Voigt et al., 2021; Mazur et al., 2005). Inversion was associated with substantial uplift and erosion of the axial part of the Polish Basin i.e., the Mid-Polish Trough, which presently forms a regional anticlinal structure referred to as the Mid-Polish Anticlinorium (Swell), outlined by the 195 Cenozoic subcrop of the Lower Cretaceous and older rocks (Fig. 4). Inversion commenced in the late Turonian and lasted until the Maastrichtian – Palaeocene (e.g. Krzywiec, 2002, 2006b; Krzywiec et al., 2018; Resak et al. 2008). Due to regional inversion-driven uplift of the Mid-Polish Anticlinorium, the Upper Cretaceous mostly syn-inversion succession is presently preserved only along its ~~both~~-flanks. Increased Late Cretaceous subsidence, related to flexural bending of both flanks of the uplifted Mid-Polish Anticlinorium (cf. Hindle and Kley, 2020¹) and combined with globally high Cretaceous sea level,

200 created relatively large accommodation space filled by syn-kinematic Upper Cretaceous strata. On the other hand, progressive growth of particular inversion structures, including also compressionally-reactivated salt diapirs, led to localised reduction of accommodation space and erosion, associated with formation of growth strata characterised by thickness reductions, progressive unconformities and facies changes (Leszczyński, 2012, 2002; Krzywiec, 2002a, 2006b, 2012; Krzywiec and Stachowska, 2016; Krzywiec et al., 2009; 2018). Inversion-related uplift of the Mid-Polish Anticlinorium was associated with compressional reactivation of peripheral thin-skinned structures formed above the basin's flanks (e.g. Burliga et al., 2012; Krzywiec, 2002). The Koszalin - Chojnice Zone (Structure), located within the NE flank of the NW segment of the Mid-Polish Anticlinorium (Fig. 5, Fig. 6) and analysed in this paper (see below), is one of ~~such~~-these peripheral structures that underwent substantial inversion well documented by seismic data (cf. Krzywiec, 2006a,b).

210 The Cenozoic ~~post-inversion~~-unconsolidated, mostly clastic sediments of small thickness, generally not exceeding 200 m, unconformably cover the inverted and eroded Polish Basin (Piwocki and Kramarska, 2004; Jarosiński et al., 2009).

3 Data and methods

3.1 Seismic and well data

The seismic data used in this study included legacy 2D data and newly acquired 3D data. The regional seismo-geological transect shown on Figure 6 was assembled from several 2D profiles and, then, depth converted using velocity data from deep wells. The studied NE segment of this transects imaged the NE edge of the Mid-Polish Anticlinorium and the Koszalin - Chojnice Structure – a peripheral structure developed within the NE flank of the Mid-Polish Trough / Anticlinorium. The 2D seismic data in this part of the basin, characterised by a relatively thin Zechstein cover, did image some structures within the sub-Zechstein succession, although ~~low accuracy~~-relatively poor quality of seismic imaging ~~and low resolution~~ did not allow constructing a reliable geological model for the deeper substratum (Fig. 7A; cf. Antonowicz et al., 1994). A major breakthrough was related to acquisition of high-quality 3D seismic data that provided a clear sub-Zechstein image in the study area (Trela et al., 2011; Fig. 7B). The seismic data was available in the depth domain and calibrated by several wells that, however, drilled the entire Permo-Mesozoic cover but encountered only the topmost part of the sub-Permian (i.e., sub-Zechstein) substratum, providing rather limited stratigraphic information on deeper seismic horizons within the Drzewiany Graben, excellently imaged by the new 3D seismic data. The D-2 well and some indirect evidences were used to estimate ~~an~~ the age of the sedimentary infill of this graben as Upper Devonian (Frasnian – Famennian?) to lower Carboniferous (Tournaisian; see also below).

3.2 Structural restoration

230 Structural restoration was carried out along the cross-section that was located perpendicular to the strike of main structures imaged by the seismic data (Fig. 6). It was constructed using the NE part of the regional seismo-geological transect and two inlines extracted from the 3D survey that was located in the central part of the cross-section.

235 Standard kinematic algorithms such as fault-bend folding and simple shear were used in order to obtain a pre-deformational geometry of ~~the~~ key seismic horizons. Within the Drzewiany Graben, a shear angle was set to 50° and corresponds to the plane of maximum shear oriented parallel to minor normal fault surfaces (Dula, 1991; Xiao and Suppe, 1992). The relative timing of faults' activity was constrained based either on the presence of growth strata or cross-cutting relationships.

A maximum thickness of the syn-kinematic Upper Devonian – lower Carboniferous sedimentary sequence is deduced from the Drzewiany Graben, where it attains up to 4 km. Given that the most complete stratigraphic profile of the syn-kinematic strata is preserved within the SW part of the graben, it was used to approximate the currently missing portion of the Devonian–Carboniferous sedimentary rocks within the graben. Since little is known about a pre-deformation extent, geometry and thickness of the syn-tectonic strata at graben flanks, deposition of 50-m thick horizontal strata was assumed at each pre-inversion restoration step. It should be stressed though that, due to scarcity of data and widespread post-inversion erosion, reconstruction of the Devonian – Carboniferous cover outside the Drzewiany Graben was not the aim of this balancing exercise. The cross-sectional shape of the unconformity at the base Permian was approximated by a regional trend line that connects the local depressions along this horizon. Flattening of the reference line resulted in preserving morphology of the unconformity. The initial thickness of Cretaceous sedimentary sequence eroded after the Alpine inversion was reconstructed using published paleothickness maps (Leszczyński, 2002, 2012).

250 Modifications and improvements of the initial seismic interpretation were iteratively introduced until a satisfactory fit of the kinematic model to seismic and well data was achieved. The quality of the restored cross-section was verified via forward modelling by successively adding strain to the restored bed geometry, until the present-day shape of the horizons was obtained.

255 4 Results

4.1 Seismic and well data

Well D-2 calibrated the Permo-Mesozoic succession and provided partial stratigraphic information about the upper Palaeozoic infill of the Drzewiany Graben (Fig. 7C). It drilled Tournaisian strata within the hangingwall of the master fault of the graben, went through the fault, and encountered Frasnian – Famennian within the footwall. Upper Devonian was

260 interpreted within the axial part of the graben using similarity of seismic horizons from the footwall and the hangingwall. Thickening of the large part of the sedimentary infill of the Drzewiany Graben towards the master fault suggests its syn-depositional activity during extension, similarly to the model shown on Figure 1. On the other hand, the present day geometry of the infill, in particular an anticline above the master fault, suggests substantial inversion (cf. Fig. 1).

265 2D data provided information on the regional present-day geometry of the Permo-Mesozoic succession along the NE edge of the Mid-Polish Anticlinorium (Fig. 6). The Koszalin - Chojnice Structure was interpreted as a thin-skinned anticlinal structure developed above the listric reverse fault rooted within the Zechstein evaporites, which is compatible with an overall geometry of this structure imaged by a large number of good-quality seismic data (cf. Krzywiec, 2006b, 2012; see also below).

270

4.2 Cross-section balancing

Cross-section restoration permitted to distinguish four major deformation events in the tectonic evolution of the Drzewiany Graben (Fig. 8). According to the most plausible scenario, the Drzewiany Graben formed in response to Late Devonian – early Carboniferous NE-SW-oriented horizontal extension (Fig. 8a-i). Tectonic activity of the two conjugate, oppositely-
275 dipping graben-bounding normal faults created accommodation space successively filled with syn-tectonic deposits. A heterogeneous displacement along the master faults resulted in vertical variation in the geometry of growth strata within the graben: antithetic rotation and thickening toward the northeast is the most pronounced at the basal section of the syn-kinematic sedimentary sequence, as opposed to the youngest sub-parallel layers maintaining almost constant thicknesses (Fig. 8g-h). During the final stage of the extensional evolution of the Drzewiany Graben, the syn-tectonic strata were
280 disrupted by secondary normal faults (Fig. 8i; cf. Jagger and McClay, 2018; McClay, 1995; McClay ~~&~~and Scott, 1991). The estimated total amount of the Late Devonian – early Carboniferous horizontal extension responsible for formation of the Drzewiany Graben was as high as 10 km (Fig. 8). However, this should be regarded as a minimum value as thickness of the post-Tournaisian strata that could have been deposited in this area is not known. In addition, the assumed thickness of the Tournaisian is a minimum estimate.

285

The following phase of the Variscan structural inversion affected ~~solely~~only the SW-dipping master fault by inducing 2 km of reverse displacement (Fig. 8j). The remaining normal faults do not show any seismic-scale signs of compressional reactivation. The syn-extensional sedimentary infill of the Drzewiany Graben, occupying a proximal portion of the hanging wall, was, then, folded due to material translation over the underlying concave master fault. As a result, an asymmetric, open
290 anticline with c. 1.3 km of structural relief was produced (Fig. 8j). Its topmost part, together with growth strata that might have been deposited during inversion, was removed due to syn-to-post-inversion erosion.

The subsidence centre of the Polish Basin, illustrated on Figure 8l-o, developed SW from the analysed profile, within the Mid-Polish Trough, i.e., in the area, where currently the Mid-Polish Anticlinorium, formed by the second inversion event, is located (cf. Fig. 6). Subsidence within the Mid-Polish Trough led to tilt of the pre-Permian strata by c. 4° to the SW. It generated accommodation space that was successively filled in with sedimentary rocks thickening to the SW (i.e., towards the basin depocenter). Normal faulting related to the basin formation only slightly affected the study area by growth of new SW-dipping faults beneath the Zechstein evaporitic cover. It should be noted that faults outlining the inverted Drzewiany Graben were not reactivated during this tectonic phase. This deformation event yielded up to 500 m of horizontal stretching.

300

Evolution of the Permian-Mesozoic basin was terminated by the Late Cretaceous – Paleocene inversion that is the youngest major deformation stage discernible in the study area. It was caused by the NE-SW-oriented compression and formation of the thin-skinned anticlinal Koszalin – Chojnice Structure (Fig. 8q; cf. Krzywiec, 2006a, 2021). Its location might have been triggered by a buttressing effect of the sub-Zechstein basement steps related to small normal faults that were not reactivated during the inversion. Growth of the fault-related anticline was associated with c. 500 m of horizontal shortening. Post-inversion erosion removed the topmost part of the Koszalin – Chojnice Structure and part of the Upper Cretaceous syn-inversion cover. The Cenozoic post-inversion strata in this area are of negligible thickness and are not considered in this model.

305

5 Discussion and conclusions

The quantitative, balanced model that was prepared using seismic and well data from NW Poland depicted four main tectonic phases: (1) Late Devonian – early Carboniferous extension, (2) late Carboniferous inversion, (3) Permo-Mesozoic subsidence, and (4) Late Cretaceous – Paleogene inversion. Decoupling between two inversion events was caused by Zechstein evaporites. All these four phases will be discussed below in a regional context of geological evolution. Regional conceptual model depicting pre-Permian Palaeozoic evolution of the study area is shown on Figure 9. Its eastern part is based on regional seismic profile Pl-5400 of the PolandSPAN® survey acquired above the Caledonian foredeep i.e. the Baltic Basin (Krzywiec et al., 2014; Mazur et al., 2016), its western part on seismic data presented in this paper.

315

Two questions could be ~~posed~~formulated regarding phase (1) i.e., the Late Devonian – early Carboniferous extension: a) why was it focused in this area, and b) what was the ~~casual~~causal regional mechanism that led to this event? As it was described above, the West Pomerania Basin developed above the frontal part of the thin-skinned Caledonian orogenic belt (Krzywiec et al., 2014; Mazur et al., 2016; see also Dadlez, 1978; Katzung et al., 1993; Podhalańska and Modliński, 2006; Znosko, 1965; Żaba and Poprawa, 2006). Reactivation of thrust structures as normal faults has been well documented in various orogenic belts (e.g., Corti et al., 2006; Deng et al., 2021; Faccenna et al., 1995; Fazlikhani et al., 2021; Tari et al., 2021; Withjack et al., 2010). Often, such reactivation is associated with formation of half-grabens with syn-kinematic

320

325 deposition focused above hangingwall of such asymmetric extensional system, and formation of growth strata characterised
by divergent stratal pattern and thickening towards the master fault, as shown on middle panels of Figure 1A, ~~and 1B~~ and 1C
(cf. Babaahmadi et al., 2018; Constenius, 1982, 1996; Powell and Williams, 1989; Tari et al., 2021; Velasco et al., 2010). As
described by e.g. Ivins et al. (1990), dips of many normal faults shallowing with depth are caused by the reactivation of pre-
existing thrust faults of underlying thrust belts. All these features are compatible with characteristics of extensional Late
330 Devonian – early Carboniferous half-grabens illustrated on Fig. 8b-i, including both their syn-kinematic sedimentary infill as
well as geometry of the master fault. ~~This fault –that~~ could have been inherited from the Caledonian thrust belt although
unequivocal seismic evidence of that is currently lacking. Late Palaeozoic Extensional grabens of the same age have been
widely documented in different parts of the extensionally reactivated Caledonides (e.g. Coward et al., 1987; Fossen, 2010;
Koehl et al., 2018; Norton et al., 1987; Osmundsen and Andersen, 2001; Rowan and Jarvie, 2020; Scisciani et al., 2021;
335 Séranne et al., 1989; Stemmerik, 2000). Such grabens, very similar to the Drzewiany Graben, located above the Caledonian
thin-skinned fold-and-thrust belt, have been also documented using deep seismic data in the south-western Baltic Sea, NW
from the Western Pomerania Basin (Lassen et al., 2001). In NW Poland, extensional reactivation of low-angle thrusts of the
Caledonian thin-skinned orogenic wedge, characterised by rather large thickness (cf. Krzywiec et al., 2014; Mazur et al.,
2016), explains both a listric geometry of the master fault that governed the evolution of the Drzewiany Graben as well as its
340 thin-skinned character (Fig. 9; see also Fig. 1B). Late Devonian – early Carboniferous extension that reactivated Caledonian
orogenic wedge in NW Poland coincided with a regional extensional phase that affected the southern margin of Laurussia
(cf. Smit et al., 2018).

Inversion tectonics and reactivation of basement faults and fracture zones within the forelands of orogenic belts is a well-
345 known process (cf. Ziegler et al., 2002). Well documented examples include the Apennines (Costa et al., 2021; Scisciani,
2009), Andes (Delgado et al., 2012; Bilmes et al., 2013; Iaffa et al., 2011) and the Alps (Schori et al., 2021). Deformation
within the Variscan orogenic belt also have ~~their~~ expressions within the Variscan foreland – a whole array of inverted faults
and basins in front of the Variscan belt have been documented in the S UK (Chadwick and Evans, 2005; Corfield et al.,
1996; Glen et al., 2005; Peace and Besly, 1997; Shail ~~& and~~ Leveridge, 2009; Smith, 1999). Figure 10 shows an interpreted
350 seismic profile across the Eakring anticline that documents substantial Dinantian (Tournaisian – Visean) extension and
subsidence, followed by late Carboniferous Variscan inversion, post-inversion erosion, and Permo-Triassic sedimentation. In
this case, there was no Late Devonian extension although lack of deep wells and inferior seismic imaging at deeper level
probably does not preclude this. The Eakring anticline could be directly compared to the inverted Drzewiany Graben, both in
terms of an overall geometry and main stages of development of Variscan inversion structures. There are also similar sub-
355 Zechstein Variscan structures imaged on seismic data in N Germany (von Hartmann, 2003).

Late Cretaceous inversion in the vicinity of NW Poland has been documented by numerous authors (Deeks and Thomas,
1995; Krzywiec et al 2003; 2021; Mazur et al., 2005; Meissner et al., 2002; Sopher et al., 2016; Seidel et al., 2018;

Deutschmann et al., 2018). Seismic examples from areas without Zechstein evaporites show deeply rooted reverse faults, along which basement blocks have been uplifted. However, different geometries are observed in the areas, where Zechstein evaporites were deposited. The evaporites led to regional mechanical decoupling between the sub-evaporitic basement and supra-evaporitic cover, both during extension as well as inversion (e.g. Ahlrichs et al., 2020; Betz et al., 1987; Burliga et al., 2012; Dooley and Hudec, 2020; Lohr et al., 2007; Marsh et al., 2010; Soto et al., 2007; Stewart, 1999; Withjack and Callaway, 2000). In our study area, a thin-skinned inversion structure – the Koszalin – Chojnice Structure – has been documented by seismic data. Due to deep post-inversion erosion, the top of this inversion anticline and associated inversion-related growth strata were removed. Better examples of the same structure are provided by seismic data from its more south-eastern segment, where relatively thick Upper Cretaceous succession is still preserved (Fig. 11A; cf. also Krzywiec, 2006b, 2012). Similar structures have been documented in S England (e.g. Chadwick and Evans, 2005; [Cosgrove et al., 2021](#)). One of them is the Weymouth anticline, shown on Figure 11B. It evolved from Early Jurassic to Early Cretaceous due to detached thin-skinned listric normal faulting above the morphologically varied sub-salt basement. For this structure, Cenozoic (Miocene) inversion was postulated (Chadwick and Evans, 2005).

As it was described and illustrated above, the area analysed in this paper underwent two phases of inversion. Repeated extension and compression ~~realized-occurring~~ along the same faults have been described by many authors (e.g., Bosworth and Tari, 2021; Dichiarante et al., 2020; Minguely et al., 2010). In our case, the presence of Zechstein evaporites resulted in mechanical decoupling between the Devonian-Carboniferous and Triassic-Cretaceous levels, and, despite close location, both inversion structures evolved independently. Variscan inversion was associated with compressional reactivation of a listric normal fault that might have originally originated as a Caledonian thrust. Alpine (Late Cretaceous – Palaeocene) inversion was associated with listric thin-skinned reverse faulting detached within the Zechstein evaporites. Both inversion structures are compatible with certain elements of the classic inversion model by Bally (1984), but collectively form a complex, superimposed multilayer decoupled inversion system.

Data availability

Seismic and well data (excluding Jamno IG-2 well) used in this study are confidential and not available publicly. Data from Jamno IG-2 well could be accessed via Central Geological Database and National Geological Archive maintained by the Polish Geological Institute.

Author contribution

PK wrote most of the text, prepared most of the figures and compiled the paper, MK prepared balanced model, prepared relevant part of the text and Fig. 8, PP and SM provided expertise on regional geology, MK and PŚ were instrumental in providing the data used in this study and were involved in discussions on interpretation of seismic data.

Competing interests

The authors declare that they have no conflict of interest.

Special issue statement

This article is part of the special issue “Inversion tectonics – 30 years later” [that was organized as a follow-up to the ~~–It is a result of the similarly entitled technical session at the~~ EGU General Assembly ~~2019~~, Vienna, Austria, 7–12 April 2019.](#)

Acknowledgements

PGNiG S.A. kindly provided all the seismic and well data used in this study. Seismic data was acquired and processed by Geofizyka Toruń S.A. IHS Markit and Petroleum Experts are acknowledged for providing software for seismic data interpretation and cross-section balancing, respectively. PK would like to thank colleagues from Geofizyka Toruń S.A., especially Paweł Pomianowski and Mariusz Łukaszewski, for stimulating discussions regarding various aspects of acquisition and processing of seismic data from the Pomerania region. This study was supported by PGNiG S.A., regional analysis was completed within the NCN grant UMO-2015/17/B/ST10/03411. [Gabor Tari and Mark Cooper are thanked for their reviews that helped to finally shape this paper.](#)

References

- Ahrlachs, N., Hübscher, C., Noack, V., Schnabel, M., Damm, V. and Krawczyk, C. M.: Structural Evolution at the Northeast North German Basin Margin: From Initial Triassic Salt Movement to Late Cretaceous-Cenozoic Remobilization, *Tectonics*, 39, <https://doi.org/10.1029/2019TC005927>, 2020.
- Antonowicz, L., Iwanowska, E. and Rendak, A.: Tensional tectonics in the Pomeranian section of the T-T Zone and the implications for hydrocarbon exploration, *Kwart. Geol.*, 38, 289–305, 1994.
- Babaahmadi, A., Sliwa, R., Esterle, J. and Rosenbaum, G.: The evolution of a Late Cretaceous–Cenozoic intraplate basin (Duaringa Basin), eastern Australia: evidence for the negative inversion of a pre-existing fold–thrust belt, *International Journal of Earth Sciences*, 107, 1895–1910, <https://doi.org/10.1007/s00531-017-1577-3>, 2018.

- Bally, A. W.: Tectogenese et sismique reflexion, Bull. la Société Géologique Fr., S7-XXVI(2), 279–285, <https://doi.org/10.2113/gssgfbull.s7-xxvi.2.279>, 1984 (in French with English summary).
- 415 Betz, D., Führer, F., Greiner, G. and Plein, E.: Evolution of the Lower Saxony Basin, *Tectonophysics*, 137, 127–170, [https://doi.org/10.1016/0040-1951\(87\)90319-2](https://doi.org/10.1016/0040-1951(87)90319-2), 1987.
- Bilmes, A., D’Elia, L., Franzese, J. R., Veiga, G. D. and Hernández, M.: Miocene block uplift and basin formation in the Patagonian foreland: The Gastre Basin, Argentina, *Tectonophysics*, 601, 98–111, <https://doi.org/10.1016/j.tecto.2013.05.001>, 2013.
- 420 Bonini, M., Sani, F. and Antonielli, B.: Basin inversion and contractional reactivation of inherited normal faults: A review based on previous and new experimental models, *Tectonophysics*, 522–523, 55–88, <https://doi.org/10.1016/j.tecto.2011.11.014>, 2012.
- Bosworth, W. and Tari, G.: Hydrocarbon accumulation in basins with multiple phases of extension and inversion - W Desert (Egypt) and W Black Sea, *Solid Earth*, 12, 59–77, <https://doi.org/10.5194/se-12-59-2021>, 2021.
- 425 Braathen, A., Osmundsen, P.-T., Nordgulen, Ø., Roberts, D., Meyer, G.B., 2002. Orogen parallel extension of the Caledonides in northern Central Norway: an overview. *Nor. J. Geol.* 82, 225–241.
- Brun, J.-P. and Nalpas, T.: Graben inversion in nature and experiments. *Tectonics*, 15(3), 677–687, <https://doi.org/10.1029/95TC03853>, 1996.
- Buchanan, J. G. and Buchanan, P. G.: Basin Inversion, *Geol. Soc. Spec. Publ.*, 88, Geological Society, London, UK, 596 pp., ISBN-13 978-1-8977-9929-1, 1995
- 430 Buitter, S. J. H. and Pfiffner, A. O.: Numerical models of the inversion of half-graben basins, *Tectonics*, 22, 1057, <https://doi.org/10.1029/2002TC001417>, 2003.
- Buitter, S. J. H., Pfiffner, O. A., and Beaumont, C.: Inversion of extensional sedimentary basins: A numerical evaluation of the localization of shortening, *Earth Planet. Sc. Lett.*, 288, 492–504, <https://doi.org/10.1016/j.epsl.2009.10.011>, 2009.
- 435 Burgess, P. M. and Gayer, R. A.: Late Carboniferous tectonic subsidence in South Wales: Implications for Variscan basin evolution and tectonic history in SW Britain, *J. Geol. Soc. London.*, 157, 93–104, <https://doi.org/10.1144/jgs.157.1.93>, 1999.
- Burliga, S., Koyi, H. A. and Krzywiec, P.: Modelling cover deformation and decoupling during inversion, using the Mid-Polish Trough as a case study, *J. Struct. Geol.*, 42, 62–73, <https://doi.org/10.1016/j.jsg.2012.06.013>, 2012.
- Chadwick, R. A. and Evans, D. J.: A seismic atlas of southern Britain – Images of subsurface structure, *British Geological Survey Occasional Publication*, 7, British Geological Survey, Keyworth., 196 pp., ISBN 0852725124, 2005.
- 440 Chadwick, R. A. and Smith, N. J. P.: Evidence of negative structural inversion beneath central England from new seismic reflection data, *Journal of the Geological Society, London*, 145, 519-522, 1988.
- Cloetingh, S., Beekman, F., Ziegler, P. A., van Wees, J.-D. and Sokoutis, D.: Post-rift compressional reactivation potential of passive margins and extensional basins, *Geol. Soc. London, Spec. Publ.*, 306, 27–70, <https://doi.org/10.1144/SP306.2>, 2008.
- 445 [Connors, D. C. and Houseknecht, D. W.: Structural Inheritance in the Chukchi Shelf, Alaska, *Marine and Petroleum Geology*, 2022 \(in press\).](#)

- Cooper, M. and Warren, M. J.: The geometric characteristics, genesis and petroleum significance of inversion structures, *Geol. Soc. London, Spec. Publ.*, 335, 827–846, <https://doi.org/10.1144/SP335.33>, 2010.
- Cooper, M. and Warren, M. J.: Inverted fault systems and inversion tectonic settings, in: *Regional Geology and Tectonics: Principles of Geologic Analysis*, edited by: Scarselli, N., Adam, J., Chiarella, D., Roberts, D. G., and Bally, A. W., Elsevier, Amsterdam, The Netherlands, 169–204, <https://doi.org/10.1016/B978-0-444-64134-2.00009-2>, 2020.
- Cooper, M. A. and Williams, G. D.: Inversion tectonics, *Geol. Soc. London, Spec. Publ.* 44, ~~Geological Society, London, UK~~, 375 pp., 1989.
- Cooper, M. A., Williams, G. D., de Graciansky, P. C., Murphy, R. W., Needham, T., de Paor, D., Stoneley, R., Todd, S. P., Turner, J. P. and Ziegler, P. A.: Inversion tectonics – a discussion, *Geol. Soc. London, Spec. Publ.*, 44, 335–347, <https://doi.org/10.1144/GSL.SP.1989.044.01.18>, 1989.
- Corfield, S. M., Gawthorpe, R. L., Gage, M., Fraser, A. J. and Besly, B. M.: Inversion tectonics of the Variscan foreland of the British Isles, *J. Geol. Soc. London.*, 153, 17–32, <https://doi.org/10.1144/gsjgs.153.1.0017>, 1996.
- Corti, G., Lucia, S., Bonini, M., Sani, F. and Mazzarini, F.: Interaction between normal faults and pre-existing thrust systems in analogue models, *Geol. Soc. London, Spec. Publ.*, 253, 65–78, <https://doi.org/10.1144/GSL.SP.2006.253.01.03>, 2006.
- Constenius, K. N.: Relationship between the Kishenehn basin, and the Flathead listric normal fault system and Lewis thrust salient, *Geologic Studies of the Cordilleran Thrust Belt*, Rocky Mountain Association of Geologists, 2, 817-830, 1982.
- Constenius, K. N.: Late Paleogene extensional collapse of the Cordilleran foreland fold and thrust belt, *Geological Society of America Bulletin*, 108; 20-39, [https://doi.org/10.1130/0016-7606\(1996\)108<0020:LPECOT>2.3.CO;2](https://doi.org/10.1130/0016-7606(1996)108<0020:LPECOT>2.3.CO;2), 1996.
- 465 [Cosgrove, J. W., Morgan, T. O. and Ghail, R.: The deformation history of southern England, and its implications for ground engineering in the London Basin, Quarterly Journal of Engineering Geology and Hydrogeology, http://dx.doi.org/10.1144/qjegh2020-144, 2021.](http://dx.doi.org/10.1144/qjegh2020-144)
- Costa, M., Chicco, J., Invernizzi, C., Teloni, S. and Pierantoni, P. P.: Plio–Quaternary Structural Evolution of the Outer Sector of the Marche Apennines South of the Conero Promontory, Italy, *Geosciences*, 11 184, <https://doi.org/10.3390/geosciences11050184>, 2021.
- 470 [Coward, M. P., Enfield, M. A. and Fischer, M. W.: Devonian basins of Northern Scotland: extension and inversion related to Late Caledonian - Variscan tectonics, Geol. Soc. London, Spec. Publ., 44, 275-308, https://doi.org/10.1144/GSL.SP.1989.044.01.16, 1987.](https://doi.org/10.1144/GSL.SP.1989.044.01.16)
- Czarnocki, J.: Tectonics of the Święty Krzyż Mountains. Stratigraphy and tectonics of the Święty Krzyż Mountains, *Pr. Geol. Inst. Geol.*, 18, 11–133, 1957 (in Polish with English summary).
- Dadlez, R.: Sub-Permian rock complexes in the Koszalin–Chojnice zone, *Geological Quarterly*, 22, 269–301, 1978 (in Polish with English summary).
- Dadlez, R., Józwiak, W. and Młynarski, S.: Subsidence and inversion in the western part of Polish Basin – data from seismic velocities, *Kwart. Geol.*, 41 197–208, 1997.

- 480 Dadlez, R. and Marek, S.: Development of the Permian and Mesozoic basins, *Pr. Inst. Geol.*, 153, 403–409, 1997 (in Polish with English summary).
- Dadlez, R., Marek, S. and Pokorski, J.: Geological map of Poland without Cainozoic deposits, 1:1 000 000, Państwowy Instytut Geologiczny, Warszawa, Poland, 2000.
- Dadlez, R., Narkiewicz, M., Stephenson, R. A., Visser, M. T. M. and van Wees, J. D.: Tectonic evolution of the Mid-Polish
485 Trough: Modelling implications and significance for central European geology, *Tectonophysics*, 252, 179–195, [https://doi.org/10.1016/0040-1951\(95\)00104-2](https://doi.org/10.1016/0040-1951(95)00104-2), 1995.
- Deckers, J. and Rombaut, B.: Late Carboniferous differential subsidence in the Campine Basin as part of the Variscan foreland system, *Int. J. Earth Sci.*, 110, 875–888, <https://doi.org/10.1007/s00531-021-01996-z>, 2021.
- Deeks, N. R. and Thomas, S. A.: Basin inversion in a strike-slip regime: The Tornquist Zone, Southern Baltic Sea, *Geol. Soc. London, Spec. Publ.*, 88, 319–338, <https://doi.org/10.1144/GSL.SP.1995.088.01.18>, 1995.
- 490 Delgado, A., Mora, A. and Reyes-Harker, A.: Deformation partitioning in the Llanos foreland basin during the Cenozoic and its correlation with mountain building in the hinterland, *J. South Am. Earth Sci.*, 39, 228–244, <https://doi.org/10.1016/j.jsames.2012.04.011>, 2012.
- Del Ventisette, C., Bonini, M., Maestrelli, D., Sani, F., Iavarone, E. and Montanari, D.: 3D-thrust fault pattern control on
495 negative inversion: An analogue modelling perspective on central Italy, *Journal of Structural Geology*, <https://doi.org/10.1016/j.jsg.2020.104254>, 2021.
- [Deng, C., Zhu, R., Han, J., Shu, Y., Wu, Y., Hou, K., and Long, W.: Impact of basement thrust faults on low-angle normal faults and rift basin evolution: a case study in the Enping sag, Pearl River Basin, *Solid Earth*, 12, 2327–2350, <https://doi.org/10.5194/se-12-2327-2021>, 2021.](https://doi.org/10.5194/se-12-2327-2021)
- 500 Deutschmann, A., Meschede, M. and Obst, K.: Fault system evolution in the Baltic Sea area west of Rügen, NE Germany, *Geol. Soc. London, Spec. Publ.*, 469, 83–98, <https://doi.org/10.1144/SP469.24>, 2018.
- Dewey, J.F.: Kinematics and dynamics of basin inversion, in: *Inversion Tectonics*, edited by Cooper, M. A. and Williams, G. D., *Geol. Soc. London, Spec. Publ.*, 44, 352, <https://doi.org/10.1144/GSL.SP.1989.044.01.20>, 1989.
- Dooley, T. P. and Hudec, M. R.: Extension and inversion of salt-bearing rift systems, *Solid Earth*, 11, 1187–1204,
505 <https://doi.org/10.5194/se-11-1187-2020>, 2020.
- Di Domenica, A., Petricca, P., Trippetta, F., Carminati, E. and Calamita, F.: Investigating fault reactivation during multiple tectonic inversions through mechanical and numerical modeling: An application to the Central-Northern Apennines of Italy, *Journal of Structural Geology*, 67, 167–185, <https://doi.org/10.1016/j.jsg.2014.07.018>, 2014.
- Doornenbal, H. and Stevenson, A., Eds.: *Petroleum Geological Atlas of the Southern Permian Basin Area*, EAGE
510 Publications BV, Houten, The Netherlands, 342 pp., ISBN 978-90-73781-61-0, 2010.
- Dula, W. F. J.: Geometric Models of Listric Normal Faults and Rollover Folds (1), *Am. Assoc. Pet. Geol. Bull.*, 75, 1609–1625, <https://doi.org/10.1306/0C9B29B1-1710-11D7-8645000102C1865D>, 1991.

- Edel, J. B., Schulmann, K., Lexa, O. and Lardeaux, J. M.: Late Palaeozoic palaeomagnetic and tectonic constraints for amalgamation of Pangea supercontinent in the European Variscan belt, *Earth-Science Rev.*, 177, 589–612, 515 <https://doi.org/10.1016/j.earscirev.2017.12.007>, 2018.
- Faccenna, C., Nalpas, T., Brun, J.-P., Davy, P. and Bosi, V.: The influence of pre-existing thrust faults on normal fault geometry in nature and in experiments, *J. Struct. Geol.*, 17, 1139–1149, [https://doi.org/10.1016/0191-8141\(95\)00008-2](https://doi.org/10.1016/0191-8141(95)00008-2), 1995.
- [Fazlikhani, H., Bauer, W., and Stollhofen, H.: Variscan structures and their control on latest to post-Variscan basin architecture: insights from the westernmost Bohemian Massif and SE Germany, *Solid Earth Discuss.* \[preprint\], <https://doi.org/10.5194/se-2021-95>, 2021.](https://doi.org/10.5194/se-2021-95) 520
- Fossen, H.: Extensional tectonics in the North Atlantic Caledonides: a regional view, *Geol. Soc. London, Spec. Publ.*, 335, 767–793, <https://doi.org/10.1144/SP335.31>, 2010.
- Franke, W.: Topography of the Variscan orogen in Europe: Failed–not collapsed, *Int. J. Earth Sci.*, 103, 1471–1499, 525 <https://doi.org/10.1007/s00531-014-1014-9>, 2014.
- Fyhn, M. B. W., Cuong, T. D., Hoang, B. H., Hovikoski, J., Olivarius, M., Tuan, N. Q., Tung, N. T., Huyen, N. T., Cuong T. X., Nytoft, H. P., Abatzis, I. and Nielsen, L. H.: Linking Paleogene rifting and inversion in the northern Song Hong and Beibuwan Basins, Vietnam, with left-lateral motion on the Ailao Shan-Red River Shear Zone. *Tectonics*, 37, 2559–2585. <https://doi.org/10.1029/2018TC005090>, 2018.
- 530 Gibson, G. M. and Edwards S.: Basin inversion and structural architecture as constraints on fluid flow and Pb–Zn mineralization in the Paleo–Mesoproterozoic sedimentary sequences of northern Australia, *Solid Earth*, 11, 1205–1226, <https://doi.org/10.5194/se-11-1205-2020>, 2020.
- Glen, R. A., Hancock, P. L. and Whittaker, A.: Basin inversion by distributed deformation: The southern margin of the Bristol Channel Basin, England, *J. Struct. Geol.*, 27, 2113–2134, <https://doi.org/10.1016/j.jsg.2005.08.006>, 2005.
- 535 Glennie, K. W. and Boegner, P. L. E.: Sole Pit inversion tectonics, in: *Petroleum Geology of the Continental Shelf of Northwest Europe*, edited by: Illing, L.V. and Hobson, G.D., Institute of Petroleum, London, 110–120, 1981.
- Głuszyński, A. and Aleksandrowski, P.: Late Cretaceous – Early Palaeogene inversion-related tectonic structures at the NE margin of the Bohemian Massif (SW Poland and northern Czechia), *Solid Earth Discuss.* [preprint], <https://doi.org/10.5194/se-2021-99>, in review, 2021.
- 540 Grad, M., Guterch, A. and Mazur, S.: Seismic refraction evidence for crustal structure in the central part of the Trans-European Suture Zone in Poland, *Geol. Soc. London, Spec. Publ.*, 201, 295–309, <https://doi.org/10.1144/GSL.SP.2002.201.01.14>, 2002.
- Grad, M. and Polkowski, M.: Seismic basement in Poland, *Int. J. Earth Sci.*, 105, 1199–1214, <https://doi.org/10.1007/s00531-015-1233-8>, 2016.
- 545 Guterch, A. and Grad, M.: Lithospheric structure of the TESZ in Poland based on modern seismic experiments, *Geological Quarterly*, 50, 23–32, 2006.

- Guterch, A., Grad, M., Thybo, H. and Keller, G. R.: POLONAISE '97 — an international seismic experiment between Precambrian and Variscan Europe in Poland, *Tectonophysics*, 314, 101–121, [https://doi.org/10.1016/S0040-1951\(99\)00239-5](https://doi.org/10.1016/S0040-1951(99)00239-5), 1999.
- 550 Guterch, A., Wybraniec, S., Grad, M., Chadwick, R. A., Krawczyk, C. M., Ziegler, P. A., Thybo, H. and De Vos, W.: Crustal structure and structural framework, in: *Petroleum Geological Atlas of the Southern Permian Basin Area*, edited by: Doornenbal, H. and Stevenson, A., EAGE Publications BV, Houten, The Netherlands, 11–23, ISBN 978-90-73781-61-0, 2010.
- [Hansen, T. H., Clausen, O. R., and Andresen, K. J.: Thick- and thin-skinned basin inversion in the Danish Central Graben, North Sea – the role of deep evaporites and basement kinematics, *Solid Earth*, 12, 1719–1747, <https://doi.org/10.5194/se-12-1719-2021>, 2021](#)
- 555 [North Sea – the role of deep evaporites and basement kinematics, *Solid Earth*, 12, 1719–1747, <https://doi.org/10.5194/se-12-1719-2021>, 2021](#)
- Henk, A. and Nemčok, M.: Stress and fracture prediction in inverted half-graben structures, *J. Struct. Geol.*, 30, 81–97, <https://doi.org/10.1016/j.jsg.2007.10.006>, 2008.
- Hindle, D. and Kley, J.: The Subhercynian Basin: An example of an intraplate foreland basin due to a broken plate, [Solid Earth](#), 12, 2425–2438, <https://doi.org/10.5194/se-12-2425-2021>, 2021~~[Solid Earth Discuss. \[preprint\]](#), <https://doi.org/10.5194/se-2020-185>, in review, 2020.~~
- 560 [Holdsworth, R. E., Butler, C. A., Roberts, A. M.: The recognition of reactivation during continental deformation. *Journal of the Geological Society, London*, 154, 73–78, <https://doi.org/10.1144/gsjgs.154.1.0073>, 1997.](#)
- Iaffa, D. N., Sàbat, F., Muñoz, J. A., Mon, R. and Gutierrez, A. A.: The role of inherited structures in a foreland basin evolution. The Metán Basin in NW Argentina, *J. Struct. Geol.*, 33, 1816–1828, <https://doi.org/10.1016/j.jsg.2011.09.005>, 2011.
- 565 Iwins, E. R., Dixon, T. H. and Golombek, M. P.: Extensional reactivation of an abandoned thrust: a bound on shallowing in the brittle regime, *Journal of Structural Geology*. 12, 303-314, [https://doi.org/10.1016/0191-8141\(90\)90015-Q](https://doi.org/10.1016/0191-8141(90)90015-Q), 1990.
- [Jackson, C. A. L. and Larsen, E.: Temporal constraints on basin inversion provided by 3D seismic and well data: a case study from the South Viking Graben, offshore Norway, *Basin Res.*, 20, 397–417, <https://doi.org/10.1111/j.1365-2117.2008.00359.x>, 2008.](#)
- 570 [Jackson, C.-L., Chua, S.-T., Bell, R., and Magee, C.: Structural style and early stage growth of inversion structures: 3D seismic insights from the Egersund Basin, offshore Norway, *J. Struct. Geol.*, 46, 167–185, 2013.](#)
- Jagger, L. J. and McClay K. R.: Analogue modelling of inverted domino-style basement fault systems, *Basin Research*, 30, 363–381, <https://doi.org/10.1111/bre.12224>, 2018.
- 575 Jarosiński, M., Poprawa, P. and Ziegler, P. A.: Cenozoic dynamic evolution of the Polish Platform, *Geological Quarterly*, 53, 3–26, 2009.
- Katzung, G., Giese, U., Walter, R. and Von Winterfeld, C.: The Rügen Caledonides, northeast Germany, *Geol. Mag.*, 130, 725–730, <https://doi.org/10.1017/S0016756800021038>, 1993.

- 580 Kiersnowski, H.: Depositional architecture of the Rotliegend Basin in Poland, *Pr. Państwowego Inst. Geol.*, 165, 113–128, 1998 (in Polish with English summary).
- Kiersnowski, H. and Buniak, A.: Evolution of the Rotliegend Basin of northwestern Poland, *Geological Quarterly*, 50, 119–138, <https://doi.org/10.7306/gq.v50i1.7401>, 2006.
- Kley, J.: Timing and spatial patterns of Cretaceous and Cenozoic inversion in the Southern Permian Basin, *Geol. Soc. London, Spec. Publ.*, 469, 19–31, <https://doi.org/10.1144/SP469.12>, 2018.
- 585 Kley, J. and Voigt, T.: Late Cretaceous intraplate thrusting in central Europe: Effect of Africa-Iberia-Europe convergence, not Alpine collision, *Geology*, 36, 839–842, <https://doi.org/10.1130/G24930A.1>, 2008.
- Kockel, F.: Inversion structures in Central Europe – Expressions and reasons, an open discussion, *Netherlands J. Geosci. - Geol. en Mijnb.*, 82, 351–366, <https://doi.org/10.1017/S0016774600020187>, 2003.
- 590 Kombrink, H., Besly, B. M., Collinson, J. D., Den Hartog Jager, D. G., Drozdowski, G., Dusar, M., Hoth, P., Pagnier, H. J. M., Stemmerik, L., Waksmundzka, M. I. and Wrede, V.: Carboniferous, in: *Petroleum Geological Atlas of the Southern Permian Basin Area*, edited by: Doornenbal, H., and Stevenson, A., EAGE Publications BV, Houten, The Netherlands, 81–99, 2010.
- Koehl, J.-B. P., Bergh, S. G., Henningsen, T., and Faleide, J. I.: Middle to Late Devonian–Carboniferous collapse basins on the Finnmark Platform and in the southwesternmost Nordkapp basin, SW Barents Sea, *Solid Earth*, 9, 341–372, <https://doi.org/10.5194/se-9-341-2018>, 2018.
- 595 Konon, A.: Buckle folding in the Kielce Unit, Holy Cross Mountains, central Poland, *Acta Geol. Pol.*, 56, 375–405, 2006.
- Konon, A.: Strike-slip faulting in the Kielce Unit, Holy Cross Mountains, central Poland, *Acta Geol. Pol.*, 57, 415–441, 2007.
- 600 Kossow, D. and Krawczyk, C. M.: Structure and quantification of processes controlling the evolution of the inverted NE-German Basin, *Mar. Pet. Geol.*, 19, 601–618, [https://doi.org/10.1016/S0264-8172\(02\)00032-6](https://doi.org/10.1016/S0264-8172(02)00032-6), 2002.
- Krantz, R. W.: Normal fault geometry and fault reactivation in tectonic inversion experiments, *Geological Society Special Publication*, 56, 219–229, 1991.
- Kröner, U., Mansy, J.-L., Mazur, S., Aleksandrowski, P., Hann, H. P., Huckriede, H., Lacquement, F., Lamarche, J., Ledru, P., Pharaoh, T. C., Zedler, H., Zeh, A. and Zulauf, G.: Variscan tectonics, in: *The Geology of Central Europe Volume 1: Precambrian and Palaeozoic*, edited by: McCann, T., The Geological Society of London, London, UK, 599–664, <https://doi.org/10.1144/CEVIP.11>, 2008.
- 605 Krzywiec P.: Oświno structure (NW Mid-Polish Trough) - salt diapir or inversion-related compressional structure? *Geological Quarterly*, 46, 337–346, 2002a.
- 610 Krzywiec, P.: Mid-Polish Trough inversion – seismic examples, main mechanisms, and its relationship to the Alpine-Carpathian collision, *Stephan Mueller Spec. Publ. Ser.*, 1, 151–165, <https://doi.org/10.5194/smsps-1-151-2002>, 2002b.
- Krzywiec, P.: Triassic-Jurassic evolution of the Pomeranian segment of the Mid-Polish Trough – Basement tectonics and subsidence patterns, *Geological Quarterly*, 50, 139–150, 2006a.

- Krzywiec, P.: Structural inversion of the Pomeranian and Kuiavian segments of the Mid-Polish Trough – Lateral variations in timing and structural style, *Geological Quarterly*, 50, 151–168, 2006b.
- 615 Krzywiec, P.: Mesozoic and Cenozoic evolution of salt structures within the Polish basin: An overview, *Geol. Soc. London, Spec. Publ.*, 363, 381–394, <https://doi.org/10.1144/SP363.17>, 2012.
- Krzywiec, P., Gągała, Mazur, S., Słonka, Ł., Kufrasa, M., Malinowski, M., Pietsch, K. and Golonka, J.: Variscan deformation along the Teisseyre-Tornquist Zone in SE Poland: Thick-skinned structural inheritance or thin-skinned thrusting?, *Tectonophysics*, 718, 83–91, <https://doi.org/10.1016/j.tecto.2017.06.008>, 2017a.
- 620 Krzywiec, P., Gutowski, J., Walaszczyk, I., Wróbel, G. and Wybraniec, S.: Tectonostratigraphic model of the Late Cretaceous inversion along the Nowe Miasto–Zawichost Fault Zone, SE Mid-Polish Trough. *Geological Quarterly*, 53(1), 27–48, 2009.
- Krzywiec, P., Kramarska, R. and Zientara, P.: Strike-slip tectonics within the SW Baltic Sea and its relationship to the inversion of the Mid-Polish Trough – evidence from high-resolution seismic data, *Tectonophysics*, 373, 93–105, [https://doi.org/10.1016/S0040-1951\(03\)00286-5](https://doi.org/10.1016/S0040-1951(03)00286-5), 2003.
- 625 Krzywiec P., Kiersnowski H. and Peryt T. M.: Fault-controlled Permian (Rotliegend and Zechstein) sedimentation in central Poland Basin (Bydgoszcz – Szubin area) – insight from well and seismic data. *Zeitschrift der Deutschen Gesellschaft für Geowissenschaften (German Journal of Geology)*, 170(3–4): 255–272, <https://doi.org/10.1127/zdgg/2019/0198>, 2019.
- 630 Krzywiec, P. and Kufrasa, M.: External Variscides in South-Eastern Poland and Western Ukraine, in: *Geology of the Central European Variscides and its Avalonian-Cadomian precursors*, edited by: Linnemann, U., Springer-Verlag, Berlin, Heidelberg, Germany, [submitted].
- Krzywiec, P., Malinowski, M., Lis, P., Buffenmyer, V. and Lewandowski, M.: Lower Paleozoic basins developed above the East European Craton in Poland: new insight from regional high-effort seismic reflection data. *SPE/EAGE European Unconventional Resources Conference and Exhibition, Vienna (extended abstract, SPE-167739-MS)*, 2014.
- 635 Krzywiec P., Mazur S., Gągała Ł., Kufrasa M., Lewandowski M., Malinowski M. and Buffenmyer V.: Late Carboniferous thin-skinned compressional deformation above the SW edge of the East European Craton as revealed by reflection seismic and potential fields data - correlations with the Variscides and the Appalachians. [in]: R. Law, R. Thigpen, H. Stowell, A. Mersch (eds.), „Linkages and Feedbacks in Orogenic Processes”, *Geological Society of America Memoir* 213, 353 – 372, [https://doi.org/10.1130/2017.2013\(14\)](https://doi.org/10.1130/2017.2013(14)), 2017b.
- 640 Krzywiec, P., Peryt, T. M., Kiersnowski, H., Pomianowski, P., Czapowski, G. and Kwolek, K.: Permo-Triassic Evaporites of the Polish Basin and Their Bearing on the Tectonic Evolution and Hydrocarbon System, an Overview, in: *Permo-Triassic Salt Provinces of Europe, North Africa and the Atlantic Margins*, edited by: Soto, J. I., Flinch, J. F., and Tari, G., Elsevier, Amsterdam, The Netherlands, 243–261, <https://doi.org/10.1016/B978-0-12-809417-4.00012-4>, 2017c.
- 645 Krzywiec, P., Słonka, Ł., Nguyen, Q., Malinowski, M., Kufrasa, M., Stachowska, A., Huebscher, C. and Kramarska, R.: Late Cretaceous – Cenozoic history of the transition zone between the East European Craton and the Paleozoic Platform,

- Polish sector of the Baltic Sea, revealed by new offshore regional seismic data, in: EGU General Assembly, Vienna, Austria, 19-30 April 2021, EGU21-13383, <https://doi.org/10.5194/egusphere-egu21-13383>, 2021.
- Krzywiec, P., Stachowska, A. and Stypa, A.: The only way is up - On Mesozoic uplifts and basin inversion events in SE
650 Poland, *Geol. Soc. Spec. Publ.*, 469, 33–57, <https://doi.org/10.1144/SP469.14>, 2018.
- Krzywiec, P., Wybraniec, S. and Petecki, Z.: Basement tectonics of the Mid-Polish trough in central and northern Poland - Results of analysis of seismic reflection, gravity and magnetic data, *Pr. Państwowego Inst. Geol.*, 188, 107–130, 2006 (in Polish with English summary).
- Kuberska, M., Kozłowska, A., Maliszewska, A. and Buniak, A.: Evolution of pore space in the Upper Carboniferous and
655 Lower Permian sandstones from Western Pomerania, *Przegląd Geol.*, 55, 853–860, 2007 (in Polish with English summary).
- Kufraś, M., Krzywiec, P., Gągała, Ł., Mazur, S., Mikołajczak, M.: Geometry and kinematics of an incipient fold-and-thrust belt from geophysical data (Lublin Basin, Poland). *Journal of Structural Geology*, 141, <https://doi.org/10.1016/j.jsg.2020.104211>, 2020.
- Lamarche, J., Mansy, J.-M., Bergerat, F., Averbuch, O., Hakenberg, M., Lewandowski, M., Stupnicka, E., Świdrowska, J.,
660 Wajsprych, B. and Wiczorek, J.: Variscan tectonics in the Holy Cross Mountains (Poland) and the role of structural inheritance during Alpine tectonics, *Tectonophysics*, 313, 171–186, [https://doi.org/10.1016/S0040-1951\(99\)00195-X](https://doi.org/10.1016/S0040-1951(99)00195-X), 1999.
- Lassen, A., Thybo, H. and Berthelsen, A.: Reflection seismic evidence for Caledonian deformed sediments above Sveconorwegian basement in the southwestern Baltic Sea, *Tectonics*, 20, 268–276, <https://doi.org/10.1029/2000TC900028>, 2001.
- 665 Laurent, A., Averbuch, O., Beccaletto, L., Graveleau, F., Lacquement, F., Capar. L. and Marc, S.: 3-D structure of the Variscan Thrust Front in northern France: new insights from seismic reflection profiles. *Tectonics*, <https://doi.org/10.1029/2020TC006642>, 2021.
- Lazauskienė, J., Stephenson, R., Šliaupa, S. and van Wees, J.-D.: 3-D flexural modelling of the Silurian Baltic Basin, *Tectonophysics*, 346, 115–135, [https://doi.org/10.1016/S0040-1951\(01\)00231-1](https://doi.org/10.1016/S0040-1951(01)00231-1), 2002.
- 670 Leszczyński, K.: Late Cretaceous inversion and salt tectonics in the Koszalin-Chojnice and Drawno-Człopa-Szamotuły zones, Pomeranian sector of the Mid-Polish Trough, *Geological Quarterly*, 46, 347–362, 2002.
- Leszczyński, K.: The internal geometry and lithofacies pattern of the Upper Cretaceous-Danian sequence in the Polish Lowlands, *Geological Quarterly*, 56, 363–386, <https://doi.org/10.7306/gq.1028>, 2012.
- Leveridge, B. E. and Hartley, A. J.: The Variscan Orogeny: The development and deformation of Devonian/ Carboniferous
675 basins in: SW England and South Wales, in: *The Geology of England and Wales*, edited by: Brenchley, P. J., and Rawson, P. F., The Geological Society of London, London, UK, 225–255, <https://doi.org/10.1144/GOEWP.10>, 2006.
- Lipiec, M. and Matyja, H.: Depositional architecture of the lower Carboniferous Sedimentary Basin in Pomerania, *Pr. Państwowego Inst. Geol.*, 165, 101–112, 1998 (in Polish with English summary).

- Littke, R., Bayer, U., Gajewski, D. and Nelskamp, S. (Eds.): Dynamics of Complex Intracontinental Basins: The Central European Basin System, Springer-Verlag, Berlin, Heidelberg, Germany, 519 pp., <https://doi.org/10.1007/978-3-540-85085-4>, 2008.
- Lohr, T., Krawczyk, C. M., Tanner, D. C., Samiee, R., Endres, H., Oncken, O., Trappe, H. and Kukla, P. A.: Strain partitioning due to salt: Insights from interpretation of a 3D seismic data set in the NW German Basin, *Basin Res.*, 19, 579–597, <https://doi.org/10.1111/j.1365-2117.2007.00338.x>, 2007.
- Maliszewska, A., Jackowicz, E., Kuberska, M. and Kiersnowski, H.: Lower Permian (Rotliegend) rocks of western Poland – A petrographic monograph, *Pr. Państwowego Inst. Geol.*, 204, 6–115, 2016 (in Polish with English summary).
- Marsh, N., Imber, J., Holdsworth, R. E., Brockbank, P. and Ringrose, P.: The structural evolution of the Halten Terrace, offshore Mid-Norway: Extensional fault growth and strain localisation in a multi-layer brittle-ductile system, *Basin Res.*, 22, 195–214, <https://doi.org/10.1111/j.1365-2117.2009.00404.x>, 2010.
- Martínez, F., Arriagada, C., Mpodozis, C., Peña M.: The Lautaro Basin: A record of inversion tectonics in northern Chile, *Andean Geology*, 39, 258–278, <https://doi.org/10.5027/andgeoV39n2-a04>, 2012.
- Martínez Catalán, J. R., Collett, S., Schulmann, K., Aleksandrowski, P. and Mazur, S.: Correlation of allochthonous terranes and major tectonostratigraphic domains between NW Iberia and the Bohemian Massif, European Variscan belt, *Int. J. Earth Sci.*, 109, 1105–1131, <https://doi.org/10.1007/s00531-019-01800-z>, 2020.
- Matyja, H.: Upper Devonian of western Pomerania, *Acta Geol. Pol.*, 43, 27–94, 1993 (in Polish with English summary).
- Matyja, H.: Depositional architecture of the Devonian basin in the Pomorze-Kujawy area, *Pr. Państwowego Inst. Geol.*, 165, 73–88, 1998 (in Polish with English summary).
- Matyja, H.: Stratigraphy and facies development of Devonian and Carboniferous deposits in the Pomeranian Basin and in the western part of the Baltic Basin and palaeogeography of the northern TESZ during Late Palaeozoic times, *Pr. Państwowego Inst. Geol.*, 186, 79–122, 2006 (in Polish with English summary).
- Matyja, H.: Pomeranian basin (NW Poland) and its sedimentary evolution during Mississippian times, *Geol. J.*, 43, 123–150, <https://doi.org/10.1002/gj.1117>, 2008.
- Maynard, J. R., Hofmann, W., Dunay, R. E., Benthon, P. N., Dean, K. P. and Watson, I.: The Carboniferous of Western Europe: The development of a petroleum system, *Pet. Geosci.*, 3, 97–115, <https://doi.org/10.1144/petgeo.3.2.97>, 1997.
- Maystrenko, Y., Stovba, S., Stephenson, R., Bayer, U., Menyoli, E., Gajewski, D., Huebscher, C., Rabbel, W., Saintot, A., Starostenko, V., Thybo, H., Tolkunov, A.: Crustal-scale pop-up structure in cratonic lithosphere: DOBRE deep seismic reflection study of the Donbas fold belt, Ukraine. *Geology*, 31(8), 733–736, <https://doi.org/10.1130/G19329.1>, 2003.
- Mazur, S., Aleksandrowski, P., Gągała, Ł., Krzywiec, P., Żaba, J., Gaidzik, K. and Sikora, R.: Late Palaeozoic strike-slip tectonics versus oroclinal bending at the SW outskirts of Baltica: Case of the Variscan belt's eastern end in Poland, *Int. J. Earth Sci.*, 109, 1133–1160, <https://doi.org/10.1007/s00531-019-01814-7>, 2020.
- Mazur, S., Aleksandrowski, P., Turniak, K., Krzemiński, L., Mastalerz, K., Górecka-Nowak, A., Kurowski, L., Krzywiec, P., Żelaźniewicz, A. and Fanning, M. C.: Uplift and late orogenic deformation of the Central European Variscan belt as revealed

- by sediment provenance and structural record in the Carboniferous foreland basin of western Poland, *Int. J. Earth Sci.*, 99, 47–64, <https://doi.org/10.1007/s00531-008-0367-3>, 2010.
- 715 Mazur, S., Malinowski, M., Maystrenko, Y. P. and Gągała, Ł.: Pre-existing lithospheric weak zone and its impact on continental rifting – The Mid-Polish Trough, Central European Basin System, *Glob. Planet. Change*, 198, 103417, <https://doi.org/10.1016/j.gloplacha.2021.103417>, 2021.
- Mazur, S., Mikołajczak, M., Krzywiec, P., Malinowski, M., Buffenmyer, V. and Lewandowski, M.: Is the Teisseyre-Tornquist Zone an ancient plate boundary of Baltica?, *Tectonics*, 34, 2465–2477, <https://doi.org/10.1002/2015TC003934>,
720 2015.
- Mazur, S., Mikołajczak, M., Krzywiec, P., Malinowski, M., Lewandowski, M. and Buffenmyer, V.: Pomeranian Caledonides, NW Poland – A collisional suture or thin-skinned fold-and-thrust belt?, *Tectonophysics*, 692, 29–43, <https://doi.org/10.1016/j.tecto.2016.06.017>, 2016.
- Mazur, S., Porębski, S. J., Kędzior, A., Paszkowski, M., Podhalańska, T. and Poprawa, P.: Refined timing and kinematics for
725 Baltica-Avalonia convergence based on the sedimentary record of a foreland basin, *Terra Nov.*, 30, 8–16, <https://doi.org/10.1111/ter.12302>, 2018.
- Mazur, S., Scheck-Wenderoth, M. and Krzywiec, P.: Different modes of the Late Cretaceous–Early Tertiary inversion in the North German and Polish basins, *Int. J. Earth Sci.*, 94, 782–798, <https://doi.org/10.1007/s00531-005-0016-z>, 2005.
- McCann, T.: The tectonosedimentary evolution of the northern margin of the Carboniferous foreland basin of NE Germany,
730 *Tectonophysics*, 313, 119–144, [https://doi.org/10.1016/S0040-1951\(99\)00193-6](https://doi.org/10.1016/S0040-1951(99)00193-6), 1999.
- McCann, T., Pascal, C., Timmerman, M. J., Krzywiec, P., López-Gómez, J., Wetzel, L., Krawczyk, C. M., Rieke, H. and Lamarche, J.: Post-Variscan (end Carboniferous–Early Permian) basin evolution in Western and Central Europe, *Geol. Soc. London, Mem.*, 32, 355–388, <https://doi.org/10.1144/GSL.MEM.2006.032.01.22>, 2006.
- McCann, T., Skompski, S., Poty, E., Dusar, M., Vozarova, A., Schneider, J., Wetzel, A., Krainer, K., Kornpohl, K., Schafer,
735 A., Krings, M., Oplustil, S. and Tait, J.: Carboniferous, in: *The Geology of Central Europe Volume 1: Precambrian and Palaeozoic*, edited by: McCann, T., The Geological Society of London, London, UK, 411–529, <https://doi.org/10.1144/CEV1P.9>, 2008.
- McClay, K. R.: The geometries and kinematics of inverted fault systems: a review of analogue model studies, *Geol. Soc. London, Spec. Publ.*, 88, 97–118, <https://doi.org/10.1144/GSL.SP.1995.088.01.07>, 1995.
- 740 McClay, K. R. and Scott, A. D.: Experimental models of hangingwall deformation in ramp-flat listric extensional fault systems, *Tectonophysics*, 188, 85–96, [https://doi.org/10.1016/0040-1951\(91\)90316-K](https://doi.org/10.1016/0040-1951(91)90316-K), 1991.
- Meissner, R., Thybo, H. and Abramovitz, T.: Interwedging and inversion structures around the trans-European suture zone in the Baltic Sea, a manifestation of compressive tectonic phases, *Tectonophysics*, 360, 265–280, [https://doi.org/10.1016/S0040-1951\(02\)00356-6](https://doi.org/10.1016/S0040-1951(02)00356-6), 2002.

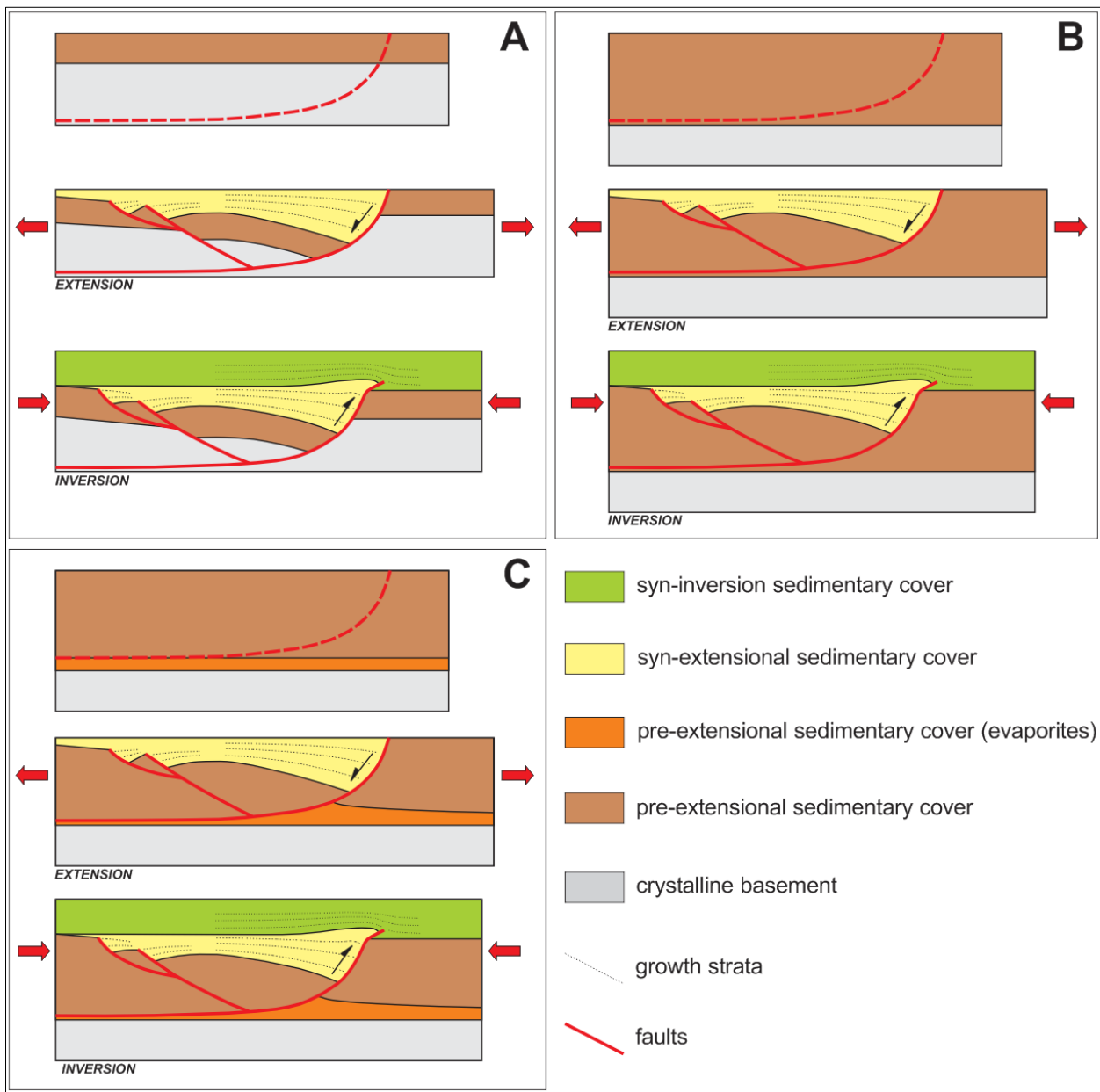
- 745 Minguely, B., Averbuch, O., Patin, M., Rolin, D., Hanot, F. and Bergerat, F.: Inversion tectonics at the northern margin of the Paris Basin (northern France): New evidence from seismic profiles and boreholes interpolation in the Artois area, *Bull. la Société Géologique Fr.*, 181, 429–442, <https://doi.org/10.2113/gssgfbull.181.5.429>, 2010.
- Mitra, S. and Islam, Q. T.: Experimental (clay) models of inversion structures, *Tectonophysics*, 230, 211–222, [https://doi.org/10.1016/0040-1951\(94\)90136-8](https://doi.org/10.1016/0040-1951(94)90136-8), 1994.
- 750 Muszyński, A., Biernacka, J., Lorenc, S., Protas, A., Urbanek, Z. and Wojewoda, J.: Petrology and depositional environment of Lower Carboniferous rocks near Dygowo and Kłanino (the Koszalin-Chojnice Zone), *Geologos*, 1, 93–126, 1996 (in Polish with English summary).
- Narkiewicz, M.: Development and inversion of Devonian and Carboniferous basins in the eastern part of the Variscan foreland (Poland), *Geological Quarterly*, 51, 231–256, 2007.
- 755 Narkiewicz, M.: The Variscan foreland in Poland revisited: New data and new concepts, *Geological Quarterly*, 64, 377–401, <https://doi.org/10.7306/gq.1511>, 2020.
- Narkiewicz, M., Poprawa, P., Lipiec, M., Matyja, H. and Miłaczewski, L.: Paleogeographic and tectonic setting and the Devonian-Carboniferous subsidence development of the Pomerania and Radom-Lublin regions, *Pr. Państwowego Inst. Geol.*, 165, 31–49, 1998 (in Polish with English summary).
- 760 [Norton, M. G., McClay, K. R. and Way, N. A.: Tectonic evolution of Devonian basins in northern Scotland and southern Norway. *Norsk Geologisk Tidsskrift*, 67, 323-338, 1987.](#)
- Okay, A. I. and Topuz, G.: Variscan orogeny in the Black Sea region, *Int. J. Earth Sci.*, 106, 569–592, <https://doi.org/10.1007/s00531-016-1395-z>, 2017.
- Oncken, O., von Winterfeld, C. and Dittmar, U.: Accretion of a rifted passive margin: The Late Paleozoic Rhenohercynian fold and thrust belt (Middle European Variscides), *Tectonics*, 18, 75–91, <https://doi.org/10.1029/98TC02763>, 1999.
- 765 Opluštil, S. and Cleal, C. J.: A comparative analysis of some Late Carboniferous basins of Variscan Europe, *Geol. Mag.*, 144, 417–448, <https://doi.org/10.1017/S0016756807003330>, 2007.
- [Osmundsen, P. T. and Andersen, T. B.: The middle Devonian basins of western Norway: sedimentary response to large-scale transtensional tectonics? *Tectonophysics*, 332, 51–68, https://doi.org/10.1016/S0040-1951\(00\)00249-3, 2001.](#)
- 770 Panien, M., Schreurs, G. and Pfiffner, A.: Sandbox experiments on basin inversion: Testing the influence of basin orientation and basin fill, *J. Struct. Geol.*, 27, 433–445, <https://doi.org/10.1016/j.jsg.2004.11.001>, 2005.
- Panien, M., Buitter, S., Schreurs, G., and Pfiffner, O.-A.: Inversion of a symmetric basin: insights from a comparison between analogue and numerical experiments, in: *Analogue and Numerical Modelling of Crustal Scale Processes*, edited by: Buitter, S. J. H. and Schreurs, G., Geological Society, London, UK, *Geol. Soc. Spec. Publ.*, 253, 253–270, <https://doi.org/10.1144/gsl.sp.2006.253.01.13>, 2006.
- 775 Peace, G. R. and Besly, B. M.: End-Carboniferous fold-thrust structures, Oxfordshire, UK: Implications for the structural evolution of the late Variscan foreland of south-central England, *J. Geol. Soc. London.*, 154, 225–237, <https://doi.org/10.1144/gsjgs.154.2.0225>, 1997.

- Pharaoh, T. C., Dugar, M., Geluk, M. C., Kockel, F., Krawczyk, C. M., Krzywiec, P., Scheck-Wenderoth, M., Thybo, H.,
780 Vejrbæk, O. V and van Wees, J. D.: Tectonic evolution, in: Petroleum Geological Atlas of the Southern Permian Basin Area,
edited by: Doornenbal, H., and Stevenson, A., EAGE Publications BV, Houten, The Netherlands, 25–57, 2010.
- Pharaoh, T. C., Haslam, R., Hough, E., Kirk, K., Leslie, G., Schofield, D. and Heafford, A.: The Mōn–Deemster–
Ribblesdale fold–thrust belt, central UK: A concealed Variscan inversion belt located on weak Caledonian crust, Geol. Soc.
London, Spec. Publ., 490, 153–176, <https://doi.org/10.1144/SP490-2018-109>, 2020.
- 785 Piwocki, M. and Kramarska, R.: Polish Lowlands and their southern rim – basics of stratigraphy, in: Geological Setting of
Poland, Vol. 1, Stratigraphy, Part 3a, Cenozoic, Paleogene, Neogene, edited by: Peryt, T. M., and Piwocki, M., Państwowy
Instytut Geologiczny, Warszawa, Poland, 19–22, 2004 (in Polish with English summary).
- Podhalańska, T. and Modliński, Z.: Stratigraphy and facies characteristics of the Ordovician and Silurian deposits of the
Koszalin-Chojnice Zone: Similarities and differences to the western margin of the East European Craton and the Rügen area,
790 Pr. Państwowego Inst. Geol., 186, 39–78, 2006 (in Polish with English summary).
- Poprawa, P.: Development of the Caledonian collision zone along the western margin of Baltica and its relation to the
foreland basin, Pr. Państwowego Inst. Geol., 186, 189–214, 2006 (in Polish with English summary).
- Poprawa, P.: Geological setting and Ediacaran–Palaeozoic evolution of the western slope of the East European Craton and
adjacent regions, Ann. Soc. Geol. Pol., 89, 347–380, <https://doi.org/10.14241/asgp.2019.23>, 2019.
- 795 Poprawa, P., Krzemińska, E., Paczeńska, J. and Armstrong, R.: Geochronology of the Volyn volcanic complex at the western
slope of the East European Craton – Relevance to the Neoproterozoic rifting and the break-up of Rodinia/Pannotia,
Precambrian Res., 346, 105817, <https://doi.org/10.1016/j.precamres.2020.105817>, 2020.
- Poprawa, P., Šliaupa, S., Stephenson, R. and Lazauskiene, J.: Late Vendian–Early Palaeozoic tectonic evolution of the Baltic
Basin: Regional tectonic implications from subsidence analysis, Tectonophysics, 314, 219–239,
800 [https://doi.org/10.1016/S0040-1951\(99\)00245-0](https://doi.org/10.1016/S0040-1951(99)00245-0), 1999.
- Powell, C. M. and Williams, G. D.: The Lewis Thrust/Rocky Mountain trench fault system in Northwest Montana, USA: an
example of negative inversion tectonics? Geol. Soc. London, Spec. Publ., 44, 223–234.
- Resak, M., Narkiewicz, M. and Littke, R.: New basin modelling results from the Polish part of the Central European Basin
system: implications for the Late Cretaceous–Early Paleogene structural inversion. International Journal of Earth Sciences,
805 97, 955–972, <https://doi.org/10.1007/s00531-007-0246-3>, 2008.
- Rowan, M. G. and Jarvie, A.: Crustal extension and salt tectonics of the Danmarkshavn Ridge and adjacent basins, NE
Greenland, Marine and Petroleum Geology, 117, <https://doi.org/10.1016/j.marpetgeo.2020.104339>, 2020.
- Rowan, M. and Krzywiec, P.: The Szamotuły salt diapir and Mid-Polish Trough: Decoupling during both Triassic–Jurassic
rifting and Alpine inversion. – Interpretation, 2 (4): SM1–SM18, <https://doi.org/10.1190/INT-2014-0028.1>, 2014.
- 810 Scheck-Wenderoth, M., Krzywiec, P., Zuhlke, R., Maystrenko, Y. and Froitzheim, N.: Permian to Cretaceous tectonics, in:
The Geology of Central Europe Volume 2: Mesozoic and Cenozoic, edited by McCann, T., The Geological Society of
London, London., 999–1030, <https://doi.org/10.1144/CEV2P.4>, 2008.

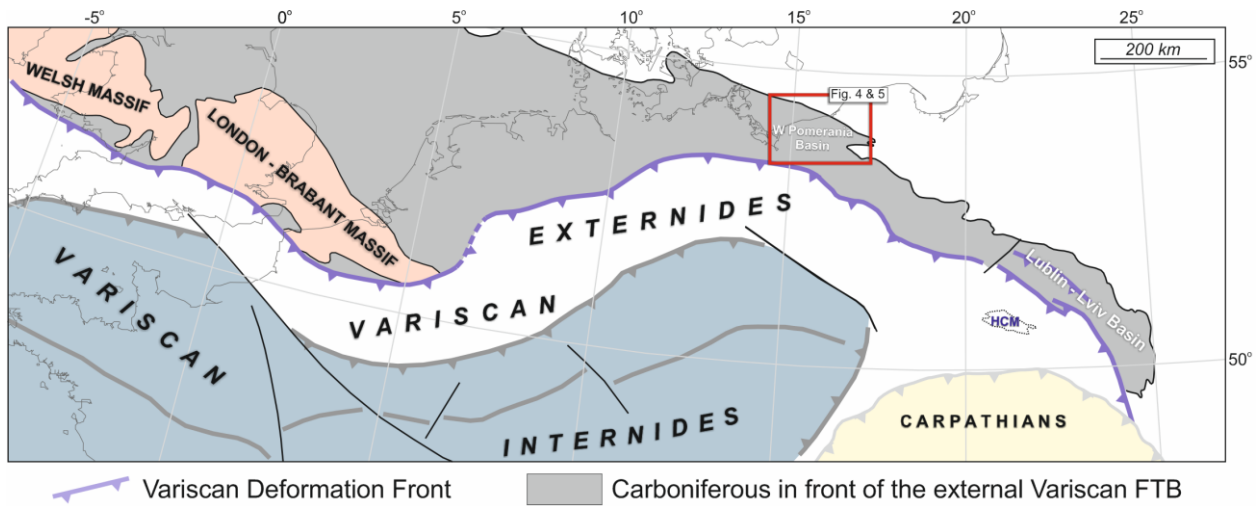
- 815 Schori, M., Zwaan, F., Schreurs, G. and Mosar, J.: Pre-existing Basement Faults Controlling Deformation in the Jura Mountains Fold-and-Thrust Belt: Insights from Analogue Models, *Tectonophysics*, 814, 228980, <https://doi.org/10.1016/j.tecto.2021.228980>, 2021.
- Scisciani, V.: Styles of positive inversion tectonics in the Central Apennines and in the Adriatic foreland: Implications for the evolution of the Apennine chain (Italy), *J. Struct. Geol.*, 31, 1276–1294, <https://doi.org/10.1016/j.jsg.2009.02.004>, 2009.
- 820 [Scisciani, V., Patruno, S., D'Intino, N. and Esestime, P.: Paleozoic basin reactivation and inversion of the underexplored northern North Sea platforms: a cross-border approach. *Geol. Soc. London, Spec. Publ.*, 494, <https://doi.org/10.1144/SP494-2020-252>, 2021.](https://doi.org/10.1144/SP494-2020-252)
- Seidel, E., Meschede, M. and Obst, K.: The Wiek Fault System east of Rügen Island: origin, tectonic phases and its relationship to the Trans-European Suture Zone, *Geol. Soc. London, Spec. Publ.*, 469, 59–82, <https://doi.org/10.1144/SP469.10>, 2018.
- Séranne, M., Chauvet, A., Seguret, M. and Brunel, M.: Tectonics of the Devonian collapse-basins of western Norway. *Bull. Soc. Geol. Fr.*, 5, 489–499, <https://doi.org/10.2113/gssgfbull.V.3.489>, 1989.
- 825 Shail, R. K. and Leveridge, B. E.: The Rhenohercynian passive margin of SW England: Development, inversion and extensional reactivation, *Comptes Rendus Geosci.*, 341, 140–155, <https://doi.org/10.1016/j.crte.2008.11.002>, 2009.
- ~~Smit, J., van Wees, J. D. and Cloetingh S.: The Thor suture zone: From subduction to intraplate basin setting, *Geology*, 44, 707–710, <https://doi.org/10.1130/G37958.1>, 2016.~~
- 830 Smit, J., van Wees, J.-D. and Cloetingh S.: Early Carboniferous extension in East Avalonia: 350 My record of lithospheric memory, *Marine and Petroleum Geology*, 92, 1010–1027, <https://doi.org/10.1016/j.marpetgeo.2018.01.004>, 2018.
- Smith, N.: Variscan inversion within the Cheshire Basin, England: Carboniferous evolution north of the Variscan Front, *Tectonophysics*, 309, 211–225, [https://doi.org/10.1016/S0040-1951\(99\)00140-7](https://doi.org/10.1016/S0040-1951(99)00140-7), 1999.
- 835 Sopher, D., Erlström, M., Bell, N. and Juhlin, C.: The structure and stratigraphy of the sedimentary succession in the Swedish sector of the Baltic Basin: New insights from vintage 2D marine seismic data, *Tectonophysics*, 676, 90–111, <https://doi.org/10.1016/j.tecto.2016.03.012>, 2016.
- Soto, R., Casas-Sainz, A. M. and Del Río, P.: Geometry of half-grabens containing a mid-level viscous décollement, *Basin Res.*, 19, 437–450, <https://doi.org/10.1111/j.1365-2117.2007.00328.x>, 2007.
- 840 Stemmerik, L.: Late Palaeozoic evolution of the north Atlantic margin of Pangea. *Palaeogeogr. Palaeoclimatol. Palaeoecol.* 161, 95–126, [https://doi.org/10.1016/S0031-0182\(00\)00119-X](https://doi.org/10.1016/S0031-0182(00)00119-X), 2000.
- Stephenson, R. A., Narkiewicz, M., Dadlez, R., van Wees, J.-D. and Andriessen, P.: Tectonic subsidence modelling of the Polish Basin in the light of new data on crustal structure and magnitude of inversion. *Sedimentary Geology*, 156(1–4), 59–70, [https://doi.org/10.1016/S0037-0738\(02\)00282-8](https://doi.org/10.1016/S0037-0738(02)00282-8), 2003.
- 845 Stewart, S. A.: Geometry of thin-skinned tectonic systems in relation to detachment layer thickness in sedimentary basins, *Tectonics*, 18, 719–732, <https://doi.org/10.1029/1999TC900018>, 1999.

- Tari, G., Arbouille, D., Schléder, Z. and Tóth, T.: Inversion tectonics: A brief petroleum industry perspective, *Solid Earth*, 11, 1865–1889, <https://doi.org/10.5194/se-11-1865-2020>, 2020.
- Tari, G., Bada, G., Beidinger, A., Csizmeg, J., Danišik, M., Gjerazi, I., Grasemann, B., Kováč, M., Plašienka, D., Šujan, M. and Szafián, P.: The connection between the Alps and the Carpathians beneath the Pannonian Basin: Selective reactivation
850 of Alpine nappe contacts during Miocene extension, *Global and Planetary Change*, 197, 103401, <https://doi.org/10.1016/j.gloplacha.2020.103401>, 2021.
- Tavarnelli, E.: Normal faults in thrust sheets: pre-orogenic extension, post-orogenic extension, or both? *Journal of Structural Geology*, 21, 1011-1018, 1999.
- Tomaszczyk, M. and Jarosiński, M.: The Kock Fault Zone as an indicator of tectonic stress regime changes at the margin of
855 the East European Craton (Poland). *Geological Quarterly*, 61: 908–925, <https://doi.org/10.7306/gq.1380>, 2017.
- Tomek, F., Vacek, F., Žák, J., Petronis, M. S., Verner, K. and Foucher, M. S.: Polykinematic foreland basins initiated during orthogonal convergence and terminated by orogen-oblique strike-slip faulting: An example from the northeastern Variscan belt, *Tectonophysics*, 766, 379–397, <https://doi.org/10.1016/j.tecto.2019.05.023>, 2019.
- Tortorici, G., Romagnoli, G., Grassi, S., Imposa, S., Lombardo, G., Panzera, F. and Catalano, S.: Quaternary negative
860 tectonic inversion along the Sibillini Mts. thrust zone: the Arquata del Tronto case history (Central Italy), *Environmental Earth Sciences*, 78, <https://doi.org/10.1007/s12665-018-8021-2>, 2019.
- Trela, M., Kasprzyk, M. and Saj A.: Opracowanie badań sejsmicznych 3D dla tematów Daszewo N i Białogard. *Geofizyka Toruń S.A.*, 2011 (unpublished report).
- van Wees, J.-D., Stephenson, R. ., Ziegler, P. ., Bayer, U., McCann, T., Dadlez, R., Gaupp, R., Narkiewicz, M., Bitzer, F.
865 and Scheck, M.: On the origin of the Southern Permian Basin, Central Europe, *Mar. Pet. Geol.*, 17, 43–59, [https://doi.org/10.1016/S0264-8172\(99\)00052-5](https://doi.org/10.1016/S0264-8172(99)00052-5), 2000.
- Velasco, M. S., Bennett, R. A., Johnson, R. A. and Hreinsdóttir, S.: Subsurface fault geometries and crustal extension in the eastern Basin and Range Province, western U.S., *Tectonophysics*, 488, 131-142, <https://doi.org/10.1016/j.tecto.2009.05.010>, 2010.
- 870 Voigt, T., Kley, J. and Voigt, S.: Dawn and dusk of Late Cretaceous basin inversion in central Europe, *Solid Earth*, 12, 1443–1471, <https://doi.org/10.5194/se-12-1443-2021>, 2021.
- von Hartmann, H.: Deformation of the Carboniferous on the Oldenburg High and the Location of the Variscan Front in Northwest Germany, *Netherlands J. Geosci.*, 82, 169–176, <https://doi.org/10.1017/S0016774600020722>, 2003.
- Wagner, R.: Stratigraphy and evolution of the Zechstein basin in the Polish Lowlands, *Pr. Państwowego Inst. Geol.*, 146, 1–
875 71, 1994 (in Polish with English summary).
- Wagner, R.: Zechstein, in: *Paleogeographic atlas of epicontinental Permian and Mesozoic in Poland*, 1:2500000, edited by: Dadlez, R., Marek, S., and Pokorski, J., Państwowy Instytut Geologiczny, Warszawa, Poland, 1998.

- Warr, L. N.: The Variscan Orogeny: The Welding of Pangaea, in: Geological History of Britain and Ireland, edited by: Woodcock, N. H., and Strachan, R. A., John Wiley & Sons, Ltd, Chichester, UK., 274–298, 880 <https://doi.org/10.1002/9781118274064.ch15>, 2012.
- Warsitzka, M., Závada, P., Jähne-Klingberg, F. and Krzywiec, P.: Contribution of gravity gliding in salt-bearing rift basins – A new experimental setup for simulating salt tectonics under the influence of sub-salt extension and tilting, *Solid Earth Discuss.*, <https://doi.org/10.5194/se-2021-17>, *se.copernicus.org* [preprint], 25 February 2021.
- Williams, G. D., Powell, C. M. and Cooper, M. A.: Geometry and kinematics of inversion tectonics, *Geol. Soc. London, Spec. Publ.*, 44, 3–15, <https://doi.org/10.1144/GSL.SP.1989.044.01.02>, 1989. 885
- Withjack, M. O., Baum, M. S. and Schlische, R. W.: Influence of preexisting fault fabric on inversion-related deformation: A case study of the inverted Fundy rift basin, southeastern Canada, *Tectonics*, 29, TC6004, <https://doi.org/10.1029/2010TC002744>, 2010.
- Withjack, M. O. and Callaway, S.: Active normal faulting beneath a salt layer: An experimental study of deformation 890 patterns in the cover sequence, *Am. Assoc. Pet. Geol. Bull.*, 84, 627–651, <https://doi.org/10.1306/c9ebce73-1735-11d7-8645000102c1865d>, 2000.
- Xiao, H. and Suppe, J.: Origin of rollover, *Am. Assoc. Pet. Geol. Bull.*, 76, 509–529, <https://doi.org/10.1306/bdff8858-1718-11d7-8645000102c1865d>, 1992.
- Zayats, K.: The structure of minerals of the Western region of Ukraine on the basis of seismic studies and the directions for 895 oil and gas exploration studies (in Ukrainian), USGEI, Lviv, Ukraine, 2015.
- Ziegler, P. A.: Geological Atlas of Western and Central Europe, Shell Internationale Petroleum Maatschappij B.V. and Geological Society Publishing House, Bath., UK, 1990.
- Ziegler, P. A., Bertotti, G. and Cloetingh, S.: Dynamic processes controlling foreland development – The role of mechanical (de)coupling of orogenic wedges and forelands, *Stephan Mueller Spec. Publ. Ser.*, 1, 17–56, <https://doi.org/10.5194/smsps-1-17-2002>, 2002. 900
- Znosko, J.: The problem of Caledonides and the border of Precambrian platform in Poland, *Biul. Inst. Geol.*, 188, 5–72, 1965 (in Polish).
- Żaba, J. and Poprawa, P.: Deformation history of the Koszalin-Chojnice zone (Pomeranian segment of TESZ, NW Poland) – constraints from structural analysis of Palaeozoic and Mesozoic successions in Polskie Łąki PIG-1 and Toruń-1 boreholes, 905 *Pr. Państwowego Inst. Geol.*, 186, 225–252, 2006.
- Żelichowski, A. M.: Lithostratigraphy and sedimentological-paleogeographical development in Western Pomerania, *Prace Państwowego Instytutu Geologicznego*, 148, 97–100, 1995.



910 **Figure 1:** A: classic **thick-skinned** model of inversion of half-graben with master listric fault rooted within the crystalline basement, based
 on Bally (1984); see also Cooper and Warren (2010, 2020), and Tari et al., (2020). B: **thin-skinned** model of inversion of half-graben with
 master listric fault rooted within the thick pre-extensional sedimentary cover. C: **thin-skinned** model of inversion of half-graben with
 master listric fault detached above pre-extensional evaporites. Note that all three models, despite their different structural characteristics at
 depth, have the same shallower tectono-sedimentary expression with identical key elements of the inverted extensional system such as
 915 inversion anticline and syn-inversion growth strata.



920 **Figure 2:** Regional map showing main elements of the Variscan orogenic belt and its foreland between the UK / France and Poland /
 925 Ukraine (adopted from Krzywiec and Kufraś, submitted, compiled after Mazur et al. 2020, Narkiewicz 2007, 2020, Opluštil and Cleal
 2007; Ziegler 1990, Catalan et al. 2020). Grey area: present-day post-erosional extent of the Carboniferous basin. Variscan orogenic front
 (thick dark violet line) is shown as a foreland-verging thrust but it should be kept in mind that this is regional generalization meant to
 illustrate general vergence of the entire thrust belt and that along that front also backthrusting and wedging could be observed. HCM: Holy
 Cross Mountains.

925

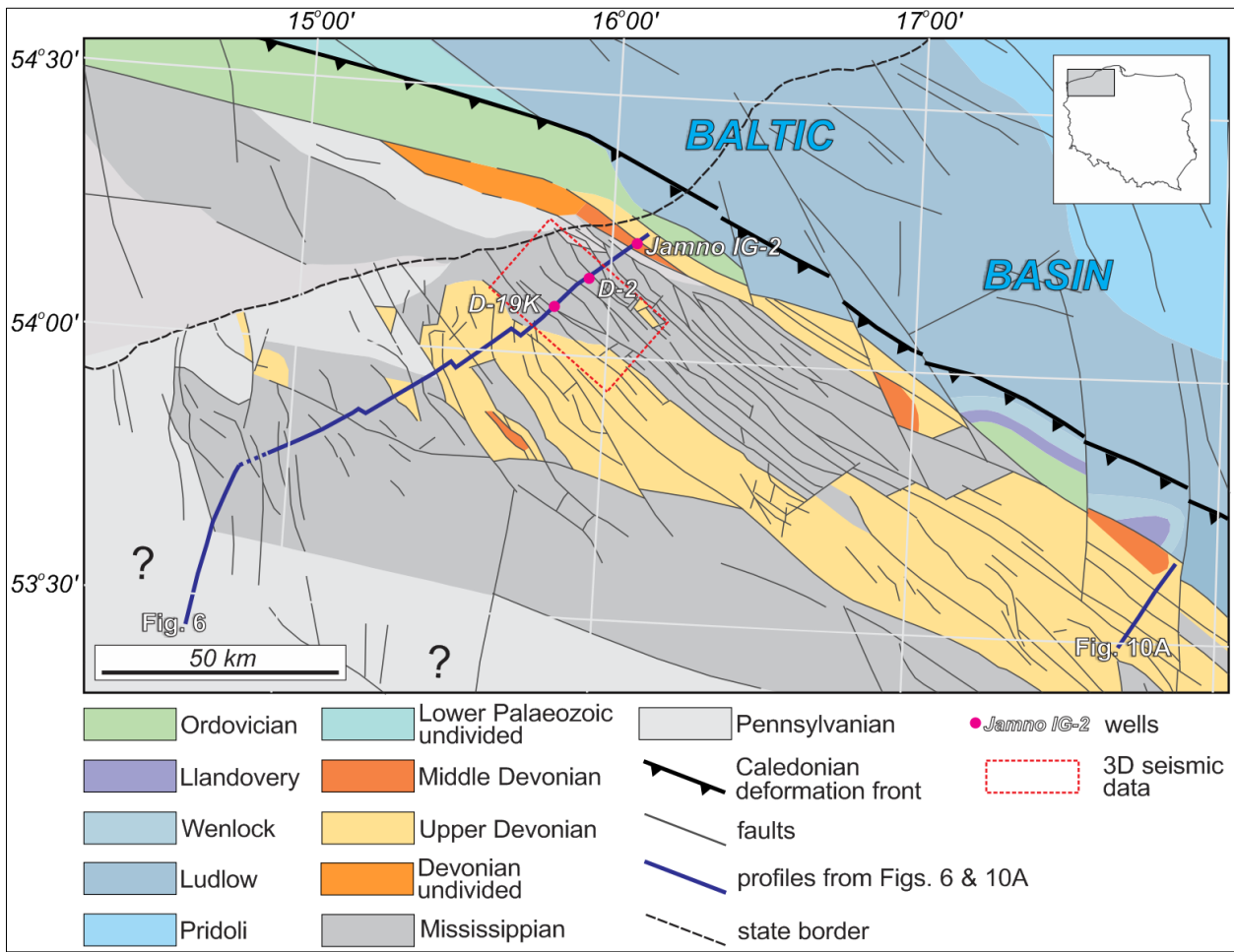


Figure 3: Geological map of NW Poland without Permian, Mesozoic and Cenozoic (after Poprawa, 2019, supplemented).

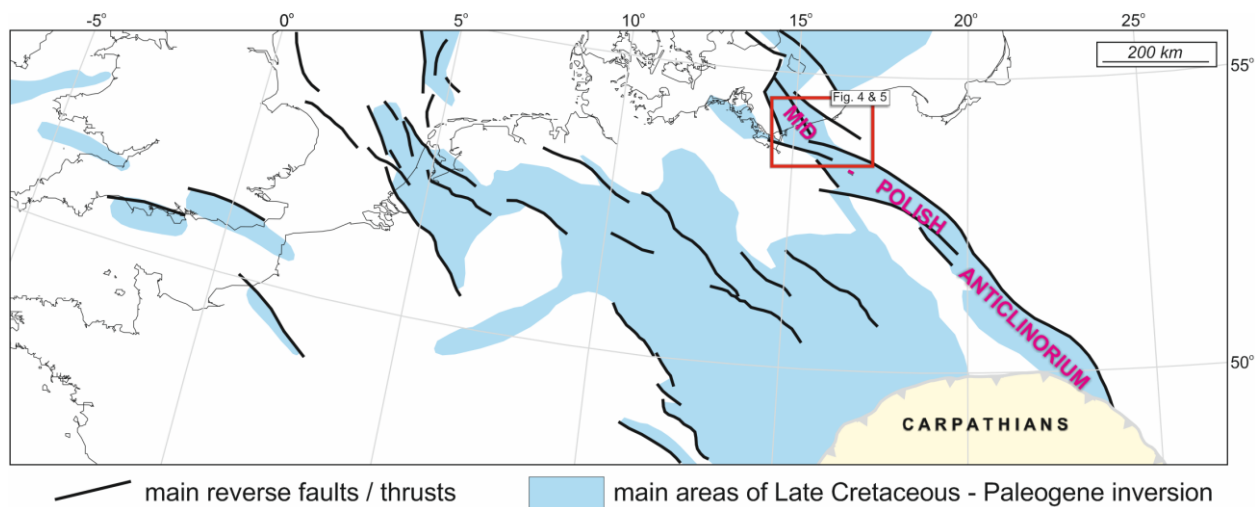


Figure 4: Schematic extent of the Alpine-Late Cretaceous - Paleogene foreland inversion in Western and Central Europe, compiled after Kley (2018), Krzywiec et al., 2021; Voigt et al. (2021), Ziegler (1990) and Ziegler et al. (2002).

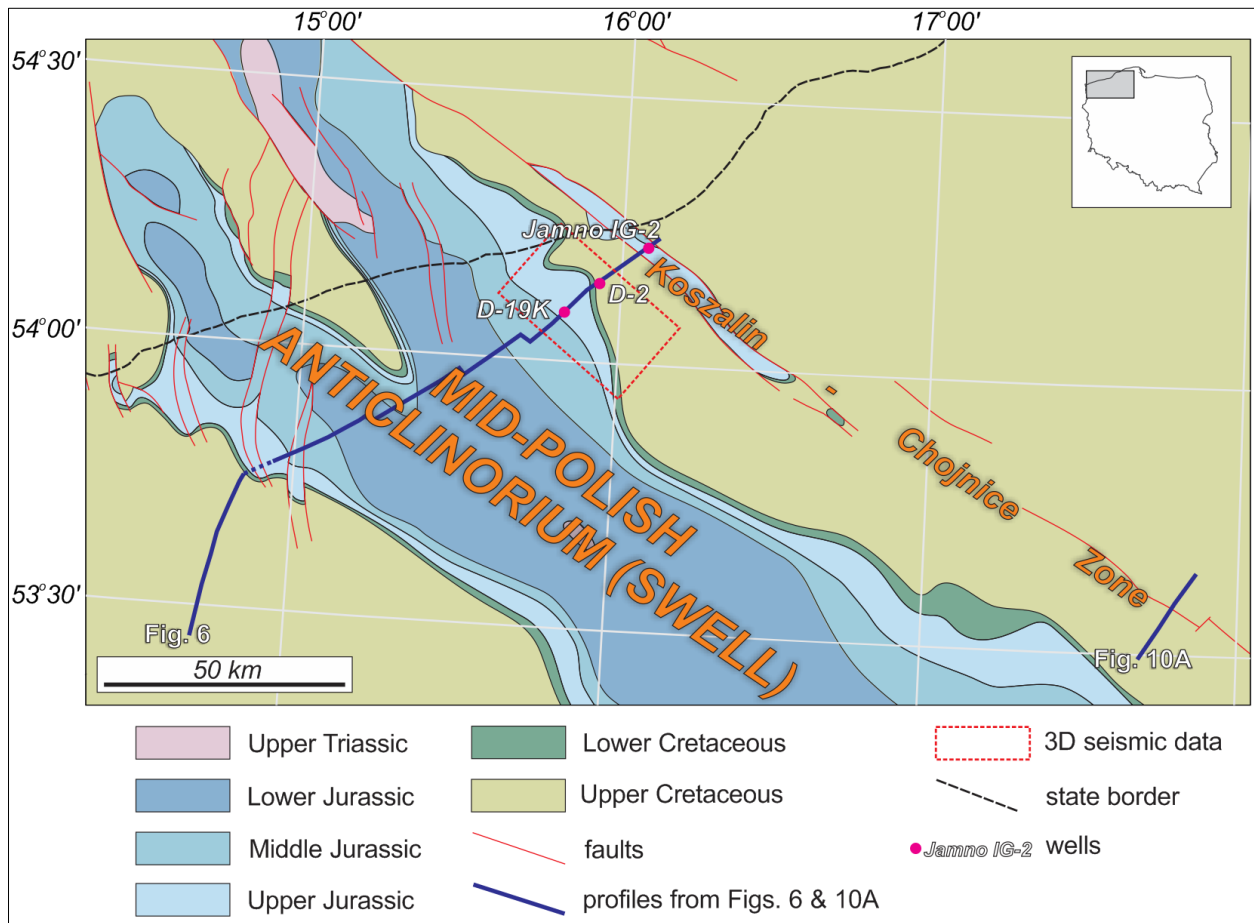
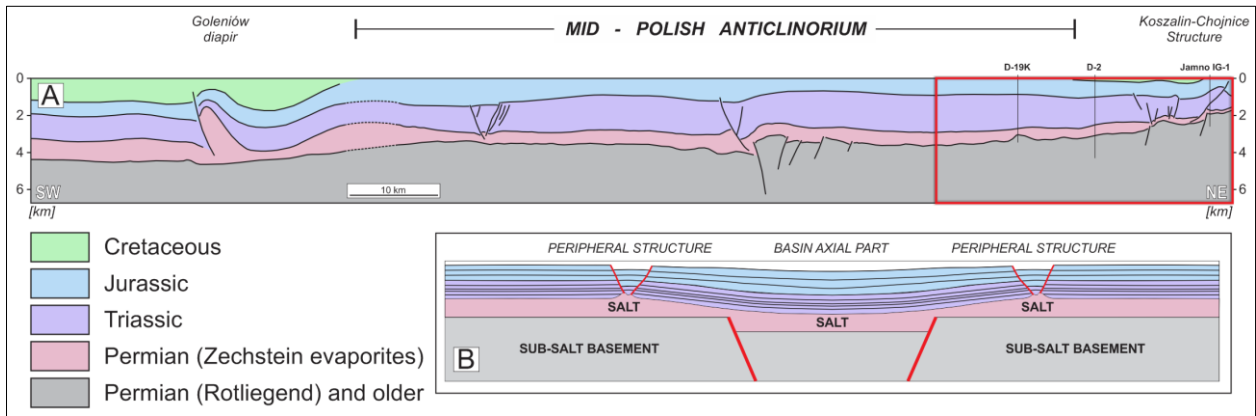


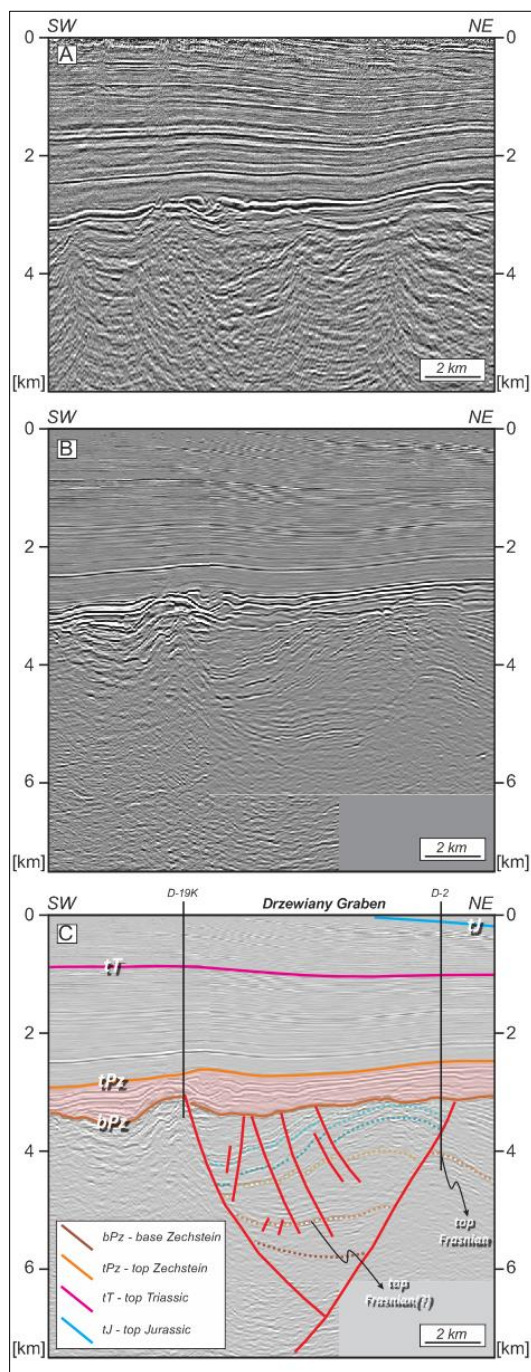
Figure 5: Geological map of NW Poland without Cenozoic (after Dadlez et al., 2000, simplified).



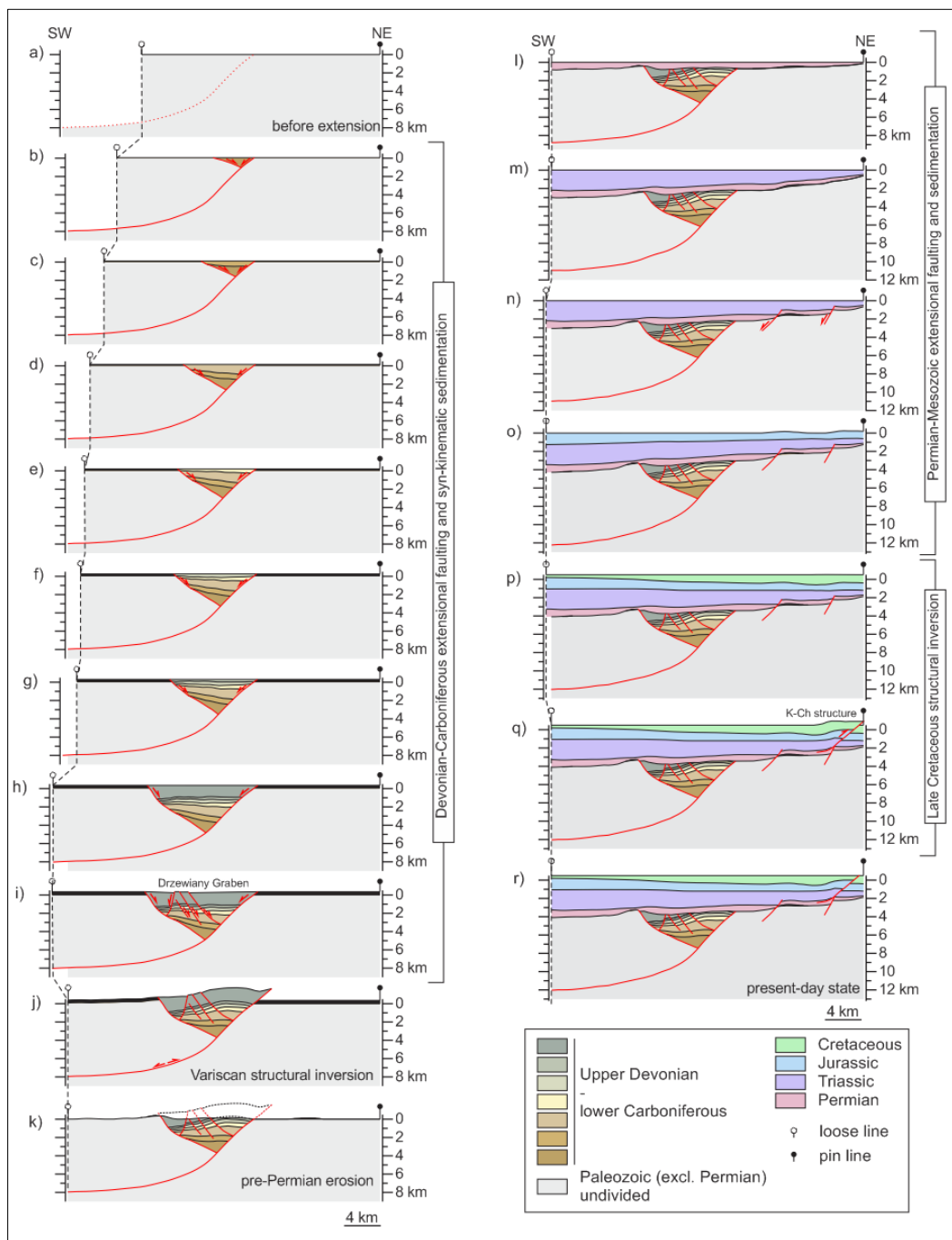
940

Figure 6: A: Regional seismo-geological transect illustrating structure of the Mid-Polish Anticlinorium (Swell) in NW Poland (cf. Krzywiec, 2006a, Krzywiec et al. 2006). Red rectangle: part of the transect that was used to construct balanced model shown on Fig. 8. B: schematic model of a decoupled sedimentary basin developed above thick salt layer during thick-skinned sub-salt extension (modified after Withjack and Callaway, 2000; see also Krzywiec, 2006b, 2012). Peripheral structures developed within the supra-salt sedimentary cover during decoupled extension often focus thin-skinned compressional deformation during ensuing basin inversion (cf. Burliga et al., 2012; Krzywiec, 2002).

945



950 **Figure 7:** Comparison of recently reprocessed vintage 1977 2D seismic data (A) and recently acquired 3D seismic data (B). Significant improvement in subsalt (i.e., sub-Zechstein) seismic imaging is clearly visible. C: the inverted Drzewiany Graben. Dotted brown lines: Upper Devonian (Frasnian – Famennian?) horizons, dotted blue horizons: lower Carboniferous (Tournaisian) horizons calibrated by D-2 well. Devonian stratigraphy within the Drzewiany Graben is conjectural only, and based on similarity to the seismic characteristics of the Upper Devonian strata drilled by D-2 well within the footwall of the Drzewiany master fault.



955 **Figure 8:** Balanced model constructed for the NE part of the regional transect from Fig. 6A. It illustrates Late Devonian (Frasnian – Famennian?) – early Carboniferous (Tournaisian) extension and subsidence (a-i), late Carboniferous inversion followed by post-inversion erosion (j-k), Permo-Mesozoic subsidence within the peripheral part of the Mid-Polish Trough (l-o), Late Cretaceous – Paleogene inversion and uplift (p-q), and present-day geometry (r). K-Ch structure: the Koszalin-Chojnica structure.



960 **Figure 9:** Regional conceptual model showing four main stages of Palaeozoic tectono-stratigraphic evolution of northern Poland.

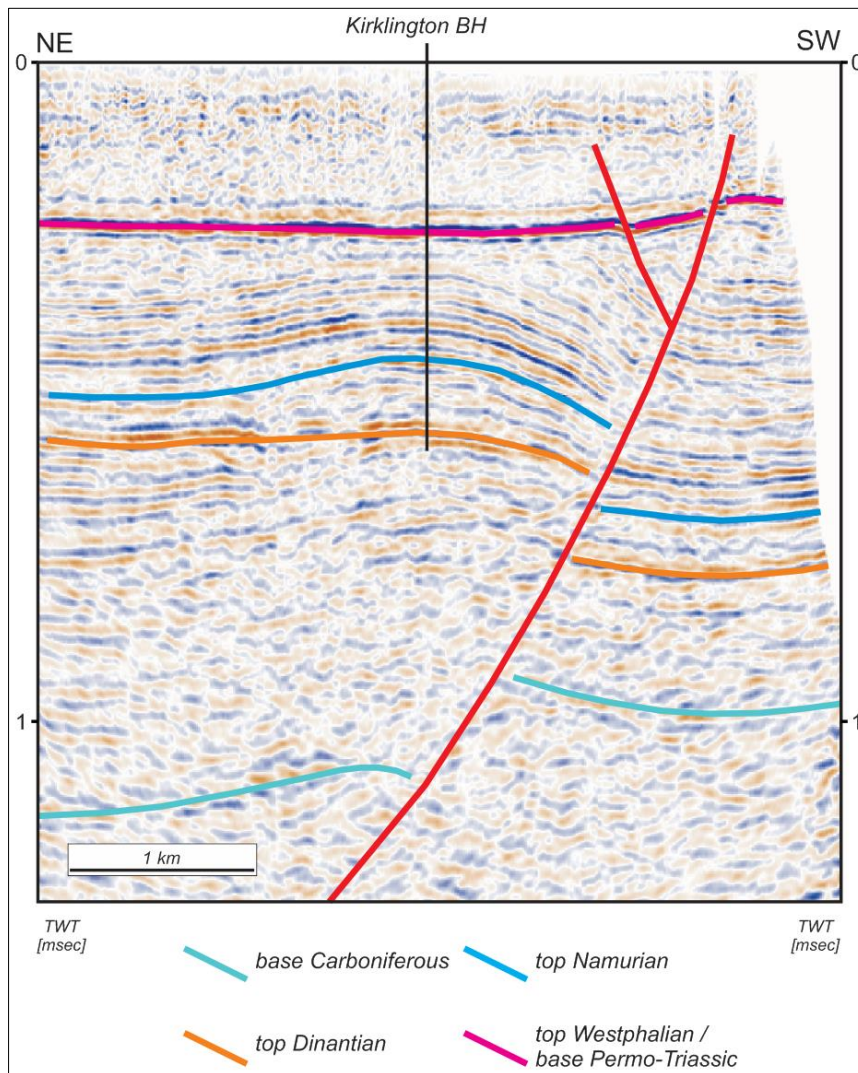


Figure 10: Interpreted seismic profile across the Eakring anticline located approx. 150 km towards the N from the Variscan orogenic front in S UK (based on ~~uninterpreted seismic profile from~~ Chadwick and Evans, 2005).

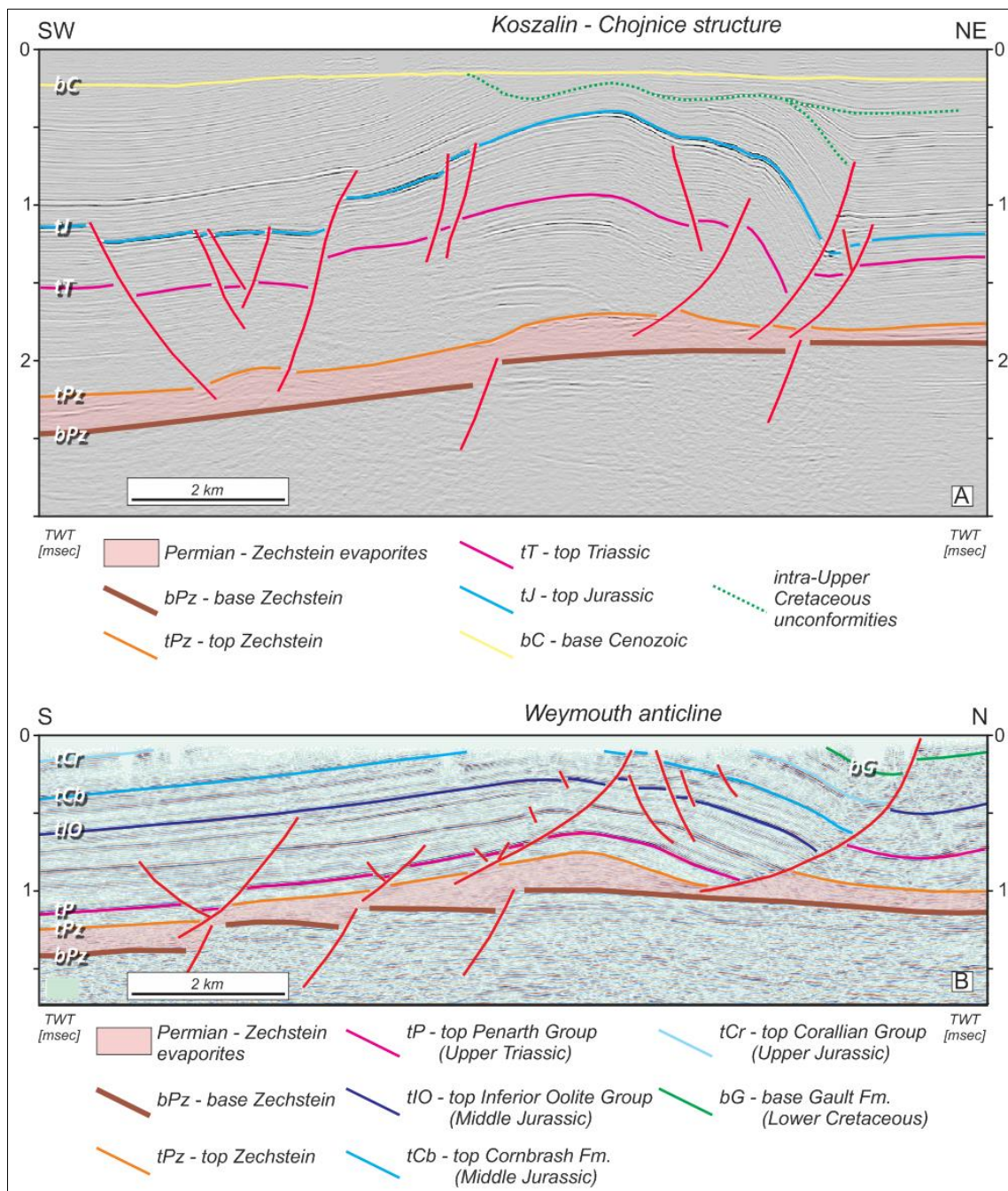


Figure 11: Thin-skinned inversion structures detached within the Zechstein evaporites: the Koszalin - Chojnice structure from NW Poland (A; cf. Krzywiec, 2006b, 2012) and the Weymouth anticline from S UK (B; based on Chadwick and Evans, 2005, partly reinterpreted). Both seismic lines are displayed with the same horizontal and vertical scale so certain structural features could be directly compared.