

The effect of low-viscosity sediments on the dynamics and accretionary style of subduction margins

Adina E. Pusok^{1,2}, Dave R. Stegman², and Madeleine Kerr²

¹Department of Earth Sciences, University of Oxford, Oxford, United Kingdom

²Scripps Institution of Oceanography, UC San Diego, La Jolla, CA, USA

Correspondence: Adina E. Pusok (adina.pusok@earth.ox.ac.uk)

Abstract. Observations of sediments at subduction margins appear to divide them into two classes: accretionary and erosive. Accretionary margins are dominated by accretion of thick piles of sediments (>1 km) from the subducting plate, while tectonic erosion is favored in regions ~~where the sedimentary cover is with little or no sedimentary cover~~ (<1 km). The consequences of the two styles of margins on subduction dynamics remain poorly resolved. In this study, we used 2-D numerical simulations of subduction to investigate how low-viscosity sediments influence subduction dynamics and margin type through plate coupling. We vary the thickness and viscosity of the sediment layer entering subduction, the thickness of the upper plate, and the driving velocity of the subducting plate (i.e., kinematic boundary conditions). Diagnostic parameters are extracted automatically from numerical simulations to analyze the dynamics and differentiate between modes of subduction margin. ~~Our results show three geometry modes of~~ We identify three margin types based on the extent of viscous coupling in the sediment layer at the subduction interface: a) tectonic ~~erosion-coupling~~ margin, b) low-angle accretionary wedge margin, and c) high-angle accretionary wedge margin. ~~We find that the properties of the sediment layer modulate the extent of viscous coupling~~ In the tectonic coupling case – analogous to an erosive margin, high-viscosity or thin-layer sediments increase coupling at the interface ~~between the subducting and overriding plates. When the viscous coupling is increased (high viscosity, thin layer of sediments), an erosive margin will be favored over an accretionary margin.~~ On the other hand, when the viscous coupling is reduced (~~low viscosity~~), sediments are scrapped-off the subducting slab to form an accretionary wedge. Models that develop tectonic ~~erosion-coupling~~ margins show small radii of curvature, slow convergence rates and thin subduction interfaces, while models with accretionary margins show large radii of curvature, faster convergence rates and dynamic accretionary wedges. These diagnostics parameters are then linked with observations of present-day subduction zones.

1 Introduction

Sediment subduction at convergent plate boundaries has long been recognized to play an important role in the dynamics of our planet as they can provide direct feedbacks between plate tectonics, climate, and life. Quantifying the sediments mass flux through subduction zones is important for understanding: i) generation of arc magmas and the problem of petrogenesis of continental crust (e.g., Plank and Langmuir (1998); Kelemen and Manning (2015)), ii) whether large volumes of existing continental crust are ever recycled back into the mantle over long periods of geologic time, and iii) cycling of volatiles from ~~Earth's~~ Earth's crust and atmosphere to its deep interior (e.g., Hawkesworth et al. (1997); Plank and Langmuir (1998);

Dasgupta and Hirschmann (2010)). Regarding the latter, carbon and water global cycles in particular depend greatly on the amount of subducted sediments (e.g., Plank and Manning (2019); Dutkiewicz et al. (2018); Merdith et al. (2019)), which in turn have important implications for climate stability (Kasting, 1989), biogeochemical cycles (Husson and Peters, 2017), and the rheology of the mantle (Hirth and Kohlstedt, 1996).

30 Sediments are also fundamental to the dynamics of subduction zones and plate tectonics. The lubricating effect of sediments at the plate interface (referred here as the domain between the lower-subducting and upper plates, as defined in Agard et al. (2018)) was recognized more than thirty years ago (i.e.e.g., Shreve and Cloos (1986)), and is critical for the mechanism of plate tectonics (e.g., Tackley (2000); Bercovici (2003); Bercovici and Ricard (2014); Sobolev and Brown (2019)). On a regional scale, sediments influence patterns of deformation by controlling the morphologies of subduction interfaces, accretionary
35 prisms and forearc basins (Clift and Vannucchi, 2004; von Huene and Scholl, 1991b; Melnick and Echtler, 2006; Simpson, 2010). Moreover, sediments occupying the shallow seismogenic subduction interface, for example, appear to influence seismic coupling and the frequency of megathrust earthquakes (e.g., Moore and Saffer (2001); van Rijsingen et al. (2018); Heuret et al. (2012); Brizzi et al. (2020); Bangs et al. (2020)).

However, the relative role of sediments on subduction dynamics and evolution remains unclear. The force balance during
40 subduction includes the potential energy change of the negative buoyancy of the subducting slab, viscous dissipation in the mantle, bending of the lithosphere, and slab-upper plate interface (e.g., Conrad and Hager (1999)). Considerable effort in subduction dynamics studies focused on quantifying dissipation due to slab bending (e.g., Conrad and Hager (1999); Becker et al. (1999); Capitanio and Morra (2012); Garel et al. (2014a)). That is because slabs were assumed to be strong (3000-5000 times stiffer than the mantle) and sediments weak, implying a low coupling degree (low shear stresses) at the interface
45 (Conrad and Hager, 1999; Duarte et al., 2015; Billen and Hirth, 2007). Laboratory and numerical models, instead, suggest that slabs may be weaker (only 150-500 times stiffer than the mantle) (Funicello et al., 2008; Moresi and Gurnis, 1996; Zhong and Davies, 1999), implying a more prominent role for plate interface dissipation than previously thought. Recent simplified energy balance calculations by Behr and Becker (2018) also suggest that sediment subduction may modulate plate speeds, with sediment-lubricated plates subducting faster than slabs with metabasaltic (i.e., exposed mantle rocks) interfaces.

50 The lubricating effect of sediments has largely been considered an implicit assumption in previous large-scale subduction dynamics studies. The subduction interface in numerical models is typically implemented by imposing either a fixed interface layer (i.e., subduction channel or weak fault) or a layer at the top of the subducting plate (i.e., weak crust) that is advected with the flow and continuously entrained into the decoupling region. In this way, the weakening effect of sediments, or any other deformation-localizing processes such as damage, grain size reduction, and fabric development, is parameterized by setting a
55 low viscosity or low friction coefficient of the interface material (Gerya et al., 2002). This is a necessary model component for stable asymmetric subduction (Petersen et al., 2017; Cramer and Tackley, 2015; Gerya, 2009; Sandiford and Moresi, 2019) and has become an increasingly common strategy in the last decade (Babeyko and Sobolev, 2008; Capitanio et al., 2010; Magni et al., 2012; Chertova et al., 2012; Cizkova and Bina, 2013; Garel et al., 2014b; Pusok and Kaus, 2015; Agrusta et al., 2017; Pusok and Stegman, 2019).

60 Indirect observations suggest subduction interfaces are not discrete isosurfaces separating two plates but are rather exemplified by melange zones (Shreve and Cloos, 1986; Vannucchi et al., 2008; Agard et al., 2018), that incorporate material from the subducting plate, the accretionary prism, and the upper plate (Menant et al., 2020; Angiboust et al., 2021). Moreover, when sediments are considered at the trench, convergent margins appear to fall into one of two classes: accretionary and erosive (i.e., Clift and Vannucchi (2004), Supplementary material, Figure S1). Accretionary margins develop from an accumulation of
65 material from the subducting plate being transferred onto the overriding plate, either by frontal off-scraping at the trench axis or by underplating of the forearc wedge above the decollement at greater depths (Angiboust et al., 2021). Erosive margins develop from a strong coupling between overriding and subducting plates that results in erosion of the underside of the upper plate, as indicated by margin truncation and forearc subsidence (von Huene and Scholl, 1991a; Clift and Vannucchi, 2004; Straub et al., 2020). Accretionary margins are dominated by accretion of thick piles of sediments (> 1 km) ~~from the subducting plate~~, while
70 tectonic erosion is favored ~~in regions where~~ when the sedimentary cover is < 1 km ~~and showing long-term landward retreat of~~ at the trench.

Both accretionary and tectonic erosion margins are widely distributed. Clift and Vannucchi (2004) classified the global subduction zones in the two categories based on their dominant mode in the last 10 Myr, and found that 43% of global subduction margin is accretionary, and 57% is tectonic erosion. The implications of this equally-distributed duality in margin
75 type to the global subduction system has not been investigated. Convergence rates for the two types of margins seem to correlate well with sediment thickness, the taper angle and radius of curvature (i.e., Supplementary material Figure S1, replotted data from Clift and Vannucchi (2004) and Wu et al. (2008)). De Franco et al. (2008) also observe a correlation between the margin type and upper plate strain (i.e. proxy for back-arc extension). Lamb and Davis (2003) went further to suggest that the type of margin can affect mountain building, with tectonic erosion producing a higher degree of coupling between the subducting and
80 upper plate. They argue that changes from a sediment-rich to sediment-starved subduction regime during Cenozoic climatic cooling may have been responsible for the rise of the Andean mountain belt.

It is clear that the consequences of the two styles of margins on large-scale subduction dynamics remain poorly resolved and have not been explored extensively with numerical models. Accretionary margins have been investigated in more details, following the theory for critical Coulomb wedges by Dahlen (1984) and Dahlen et al. (1984) (i.e., in analogue models such
85 as Lallemand et al. (1994); Gutscher et al. (1998) and numerical models such as Beaumont et al. (1999); Selzer et al. (2008); Ruh (2017); Menant et al. (2020)). However, accretionary margins have generally not been studied in the same framework as ~~erosion-style~~ erosive-style margins. Thus, we identify a number of outstanding questions regarding the influx of sediments to trenches and the style of margin that could be addressed with numerical models: Why some margins accrete sediments while others do not? What is the feedback between sediment fluxes and subduction dynamics? How much sediment material gets
90 subducted into the mantle?

In this study, we run systematic 2-D numerical simulations of ocean-ocean subduction to investigate how low-viscosity sediments influence subduction dynamics and the plate coupling. We aim to understand what causes convergent margins to either accrete material delivered by the subducting plate or, alternatively, to subduct the trench sediment pile and even erode the basement of the overriding plate. The purpose of the present work is not to model in detail the dynamics of accretionary

95 or erosive margins, but rather, by carrying out numerical experiments on the effect of sediments in geometrically simple configurations of subduction, to further understand the occurrence and evolution of each style of margin.

We begin our investigation with a discussion of the numerical setup and diagnostics. We then extract automatic diagnostics from numerical results to evaluate end-member regimes and compare to available observations in natural subduction zones. In particular, we considered a range of dependent and independent variables from statistical analyses of present-day subduction zones (Section 2; Clift and Vannucchi, 2004; Lallemand et al., 2005; Wu et al., 2008; De Franco et al., 2008; Heuret et al., 100 2012) to constrain and validate the results of numerical models. This study intends to consolidate insights from numerical models of subduction with an integrated set of global observations.

2 Methods

Numerical models presented below are purely mechanical. ~~We solve for the~~ The lithosphere and mantle are assumed to behave as a slow-creeping ~~motion of solid materials~~ fluid deforming over a timescale of million of years, ~~known as Stokes equations.~~ ~~They are comprised of the equations of conservation of~~ (Turcotte and Schubert, 2014). Conservation of mass and momentum for the fluid motion, assuming incompressibility and neglecting thermal diffusion, ~~which~~ are given by \div :

$$\nabla \cdot \mathbf{v} = 0, \tag{1}$$

$$-\nabla P + \nabla \cdot \boldsymbol{\tau} + \rho \mathbf{g} = 0, \tag{2}$$

110 where $\boldsymbol{\tau}$ is deviatoric stress tensor, P is pressure, ρ density, \mathbf{g} is the gravity vector, and \mathbf{v} is velocity. ~~Thus, the lithosphere and mantle materials are assumed to behave as a continuous medium deforming by steady state creep over long time intervals (Turcotte and Schubert, 2014).~~ We use a variable viscosity constitutive relationship $\tau_{ij} = 2\eta\dot{\epsilon}_{ij}$, where η is the Newtonian viscosity, constant for each material phase, $\dot{\epsilon}_{ij} = \frac{1}{2} \left(\frac{\partial v_i}{\partial x_j} + \frac{\partial v_j}{\partial x_i} \right)$ is the deviatoric strain rate tensor, and i, j represent spatial directions following the Einstein summation convention.

115 The above equations are solved using the parallel 3-D finite difference code LaMEM (Lithosphere and Mantle Evolution Model) (Pusok and Kaus, 2015; Kaus et al., 2016). We use a pseudo 2-D Cartesian domain in an approach similar to Pusok and Stegman (2019, 2020), meaning we consider infinite extension in the y -direction. A Lagrangian marker-in-cell method (Harlow and Welch, 1965; Gerya, 2009) is used for accurately tracking distinct material domains (Pusok et al., 2017) as they undergo extensive deformation due to creeping flow. We also employ an internal free surface, using the "sticky-air" approach 120 (Schmeling et al., 2008; Cramer et al., 2012), with a free surface stabilization algorithm (Kaus et al., 2010) that allows for the development of topography. ~~The details of the model setup follow below.~~

2.1 Model setup

We performed 2-D numerical simulations of ocean-ocean subduction (Table 1, Figure 1) to investigate the role of sediments on slab dynamics and topography. The model domain is 6000 km ~~aeross-wide~~ and 1500 km deep. The computational domain 125 has a variable grid spacing, with higher resolution in the upper mantle asthenosphere and close to the subduction trench

(minimum and maximum grid spacings: $\Delta x \in [1.73, 15.62]$ km, $\Delta z \in [2, 16]$ km). Free-slip boundary conditions are imposed on all boundaries and a 60-km layer of "sticky-air" on top of the plates. Previous studies have shown that using a free surface (i.e., sticky-air method in this case) instead of a free-slip top boundary dramatically changes subduction style (Kaus et al., 2010; Cramer and Tackley, 2015). Here, the rock-sticky-air interface represents an internal free surface formulation, from which topography is calculated.

The initial model setup and material parameters are similar to the ones used in Pusok and Stegman (2019, 2020). These models were used to investigate the dynamics of same-dip double subduction systems, and to explain dynamical processes leading to the fast convergence history between India and Eurasia in the Cretaceous. Here, we model a single subduction setting (Figure 1). The model consists of an oceanic plate subducting beneath another oceanic upper plate (i.e., ocean-ocean subduction). The length of both plates is 2500 km and they are not attached to the side walls, mimicking mid-ocean ridges at the trailing edge of the plate away from the trench. Additional experiments with a fixed upper plate to the wall are presented in the Supplementary material (Figure S8).

The subducting plate lithosphere has a thickness of 80 km with a 20 km thick core and 15 km combined weak crust and sediments. Behr and Becker (2018) estimate that metasediments and serpentinites can be more than two orders magnitude weaker than the reference asthenospheric mantle viscosity, while metabasalts are predicted to be of the same order of magnitude viscosity at temperatures between ~~600-800~~600–800°C. In our model, we assume that the weak crust is formed by a layer of highly-fractured metabasalts (~~dark-green-dark-green~~ lithology in Figure 1a,b) overlain by a layer of metasediments (~~light-green-light-green~~ lithology in Figure 1a,b). Thus, the viscosity structure for the combined weak crust and sediments represents a parameterization of the strength weakening with depth due to hydration and weak sediment cover. The combined initial thickness of sediments and crust remains the same ~~for in~~ all simulations.

Material parameters are the ones used in Enns et al. (2005) and Pusok and Stegman (2019), where the upper mantle asthenosphere has a reference density ($\rho_0 = 3300$ kg/m³) and viscosity ($\eta_0 = 2.8 \times 10^{20}$ Pa.s), the plates are 85 kg/m³ denser, and have a variable viscosity structure (~~slab lithospheric mantle~~: $500 \times \eta_0$, strong core: $5000 \times \eta_0$ and weak crust: η_0). The transition to the lower mantle is marked by a viscosity jump of 50 in the reference models, consistent with previous estimates of the viscosity jump in the Earth's mantle (Quinteros et al., 2010; Rudolph et al., 2015). For initial conditions, we impose a slab radius of curvature of 150 km and a subduction depth of 200 km, which is enough to initiate subduction. ~~We vary the properties of the sediment layer (viscosity, thickness) and thickness of upper plate as explained below and in Table 1. All other parameters are kept the same among simulations. By not changing the density of the sediments or the slab geometry, the magnitude of initial slab pull force is the same among simulations. We also consider constant sediment fluxes at the trench.~~

2.2 Input and diagnostics parameters

Previous studies investigated the role of upper plate and subduction plate parameters, such as thickness and strength (i.e., Holt et al. (2015); Brizzi et al. (2020)). Here, we focus on factors acting directly on the subduction interface. In particular, we use a result from Currie et al. (2007) and Cizkova and Bina (2019), which found that the effect of sediment buoyancy and viscous entrainment by the subducting plate are the main factors controlling the behaviour of slab and subducted sediments. Thus, we

160 ~~primarily vary the thickness and viscosity~~ vary the properties of the sediment layer ~~and those of the upper plate~~. (viscosity, thickness) and thickness of upper plate as explained below and in Table 1. All other parameters are kept the same among simulations. By not changing the density of the sediments or the slab geometry, the magnitude of initial slab-pull force is the same among simulations. We also extract automatic diagnostics from our numerical models that can be compared to parameters available for the natural subduction systems. Parameters discussed in this section are listed in Table 2.

165 **Input parameters.** For the Newtonian rheology used, the input parameters for each phase (viscosity, thickness, density) are categorized into three groups: 1) subducting plate (slab) parameters, 2) interface (sediments) parameters, and 3) upper plate parameters (Table 2). The following parameters were varied: thickness and viscosity of sediments ($h_{\text{sed}} = [5, 10]$ km, $\eta_{\text{sed}} = [0.01\eta_0, 0.1\eta_0, \eta_0]$ Pa.s), and thickness of upper plate ($h_{\text{UP}} = [50, 80, 100, 150]$ km). The sediment viscosity is consistent with estimates from Behr and Becker (2018) and the variation in upper plate thickness mimics variable plate ages.

170 Global compilation studies show that sediment thickness goes from ~~0-12 km (e.g., Laske et al. (2013); Dutkiewicz et al. (2015); Straume~~ 0–12 km (Laske et al., 2013; Dutkiewicz et al., 2015; Straume et al., 2019). Sediment thickness variation in our model setup is, thus, on the upper limit. ~~However, When the sediment viscosity is equal to the weak-crust viscosity ($\eta_{\text{sed}} = \eta_0$), it is analogous to a no-sediment case is represented by high-sediment viscosity (i.e., higher proportion of crust at the interface).~~ The thickness and viscosity of sediments will control the subduction interface shear stresses, while the upper plate thickness will control the interface length.

175 **Diagnostics Diagnostic parameters.** The diagnostics ~~(or system-response)~~ parameters, calculated from each simulation, are also categorized into three groups: 1) subduction (slab) diagnostics, including convergence rate, radius of curvature, trench velocity, 2) interface (sediments) diagnostics, including wedge angle and width of the accretionary wedge, 3) upper plate diagnostics, including trench depth, maximum and mean topographic amplitude in the upper plate. These variables are compatible with parameters derived from statistical analyses of present-day subduction zones (i.e., Clift and Vannucchi (2004); Lallemand et al. (2005); Wu et al. (2008); De Franco et al. (2008); Heuret et al. (2012)), which will be used to constrain and validate the results of numerical models. Diagnostics parameters are calculated at every time step. Their evolution (steady-state or transient) will constitute the basis of our parameter analysis in Section 3.3.

185 A schematic of how slab parameters, such as plate convergence (u_0), trench retreat (u_T), and radius of curvature (R_C), are calculated is shown in Figure 1b. The convergence velocity is calculated as the horizontal motion between the subducting plate and upper plate (i.e., motion between Marker 1 and Marker 2 in Figure 1a). The trench retreat is calculated as $u_T = dx_T/dt$, where x_T is the trench position and t is time, starting from an initial trench position $x_T = 0$. In all simulations, the trench is retreating, ~~specific~~ common to ocean-ocean subduction in nature (Schellart et al., 2007).

190 The radius of curvature is one of the parameters that requires more careful inspection. The radius of curvature is generally calculated from a circular fit to the available earthquake data, which for natural subduction systems can be noisy, incomplete or subjective (Buffett and Heuret, 2011; Lallemand et al., 2005; Wu et al., 2008). For example, some analyses fit earthquake data for the first 100 km or less because the plate interface is clearly marked at high resolution. However, there are limits on the length of the arc of a circle that can reasonably fit a unique circle (i.e., see discussion in Val and Willenbring (2020)). For

195 this reason, slab dip angle is often used as a metric for slab orientation. However, radius of curvature is more appropriate to describe slab deformation with depth, while slab dip represents only the tangent to curvature close to the surface.

We calculated the radius of curvature after Petersen et al. (2017) (Figure 1c), in the following way: ~~we~~ extract the upper surface of the core of the slab (black) and fit a circle to an arc defined by the inflection point where the plate starts bending (red point below A), and the point on the surface corresponding to 150 km depth (red point next to C). The slab core is the most appropriate feature for the fitting algorithm to calculate the radius of curvature of the slab, as its strength controls the bending of the slab. The upper layers (weak crust and sediments) may deform strongly during subduction and introduce noise into the circle-fitting algorithm. This algorithm remains robust throughout the evolution of a simulation (see movies in data repository). Therefore, our calculations of the radius of curvature are approximately 30 km less than total radius of curvature which includes the crust and sediments.

205 Sediments reaching the trench may either subduct into the mantle or accumulate into an accretionary wedge. We quantify ~~whether a margin is tectonic erosion (TE) or an accretionary wedge (AW) by calculating this behaviour using~~ two diagnostics for the accretionary wedge ~~at the trench~~: the angle (α_{wedge}) and the width (W_{wedge}) (Figure 1c). These parameters are not equivalent to the ones calculated in the taper-wedge theory (Dahlen, 1984; Dahlen et al., 1984) ~~which are more difficult to extract as current numerical resolution is too coarse (i.e., the because~~ surface topography variations in the wedge are ~~too small)~~ not resolved for the current numerical resolution.

210 The algorithm to calculate both the wedge angle and width is the following: 1) isolate the sediment markers (grey material in Figure 1c), 2) determine wedge points (A,B,C): point A is the inflection point of the slab at the surface, point B is the end point to the right of the surface of sediments, and point C is at the base of the upper plate. We then connect ABC into a triangle, and calculate $\alpha_{\text{wedge}} = \angle ACB$, and $W_{\text{wedge}} = \overline{AB}$. Supplementary material ~~shows that the algorithm works well in the majority of cases (Supplementary material, and~~ movies in data repository ~~)~~ show examples of the algorithm. It is important to note that the wedge angle is non-zero ~~even in tectonic erosion margins~~ in all simulations, as there is a finite thickness of the sediments (i.e., points A, B will not overlap).

220 The effect of sediments on topography is also investigated. Lamb and Davis (2003) suggested that sediment-starved subduction may have been responsible for high topography in the Andes. They argue that tectonic erosion favours more coupling with the upper plate, while accretionary wedges favour decoupling, thus lower topographic amplitude. We investigate these hypotheses by extracting three diagnostics related to topography: trench depth (h_{trench}), maximum topographic amplitude in the upper plate (h_{max}), and mean topographic amplitude in the upper plate (h_{mean}). The choice of last two is motivated by the study of Pusok and Kaus (2015), which ~~shows~~ showed that the two parameters can describe a number of topographic expressions for convergent margins.

3 Results

225 The 2-D numerical experiments below aim to understand what causes convergent margins to either accrete material delivered by the subducting plate or, alternatively, to subduct the trench sediment pile and even erode the basement of the overriding

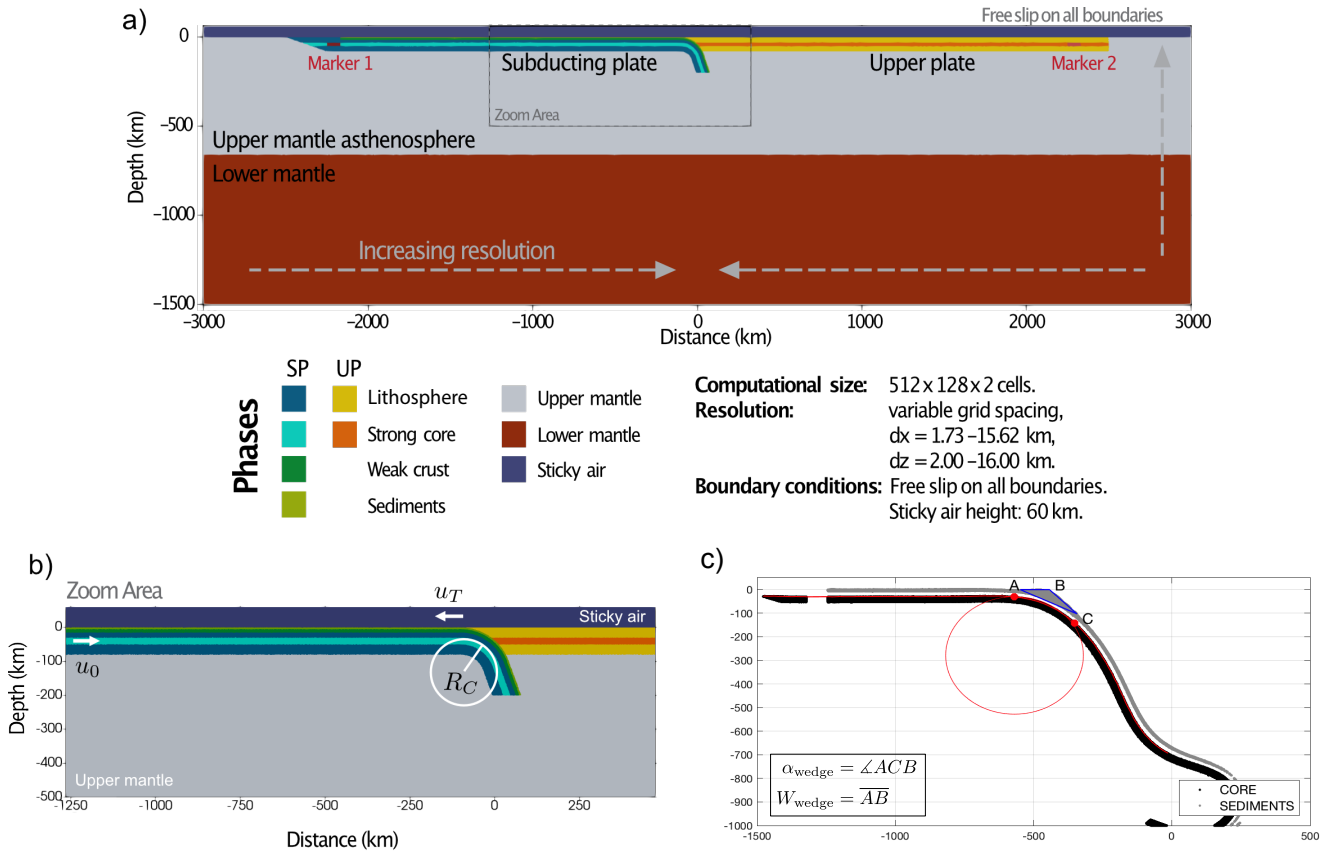


Figure 1. Model setup. a) The model consists of an oceanic plate (SP) subducting beneath another oceanic upper plate (UP). Both plates are 2500 km long and have an upper mantle lithosphere component with a 20 km strong core. The subducting plate contains a weak crust and sediments (combined 15 km, weak crust - dark green, and sediments - light green lithologies in panel b). Parameter values are listed in Table 1 and are relative to the reference density ($\rho_0 = 3300 \text{ kg/m}^3$) and viscosity ($\eta_0 = 2.8 \times 10^{20} \text{ Pa}\cdot\text{s}$) of the mantle asthenosphere. The red markers (Marker 1 and Marker 2) are located in the strong cores of the subducting and upper plate to track the convergence of the plates. The domain has free-slip boundary conditions on all sides, and a 60 km "sticky-air" layer on top of the plates. Subduction is initiated by prescribing an initial slab depth of 200 km, and an initial radius of curvature of 150 km. The dynamics is entirely controlled by the negative buoyancy (slab-pull) of the subducting slab. b) Zoom area on the subduction interface and illustrating the convergence rate (u_0), trench rate (u_T), and the radius of curvature (R_C). c) Phase markers used to calculate the radius of curvature (core markers - black), and wedge properties such as angle and width (sediment markers - grey).

No.	Sim Name	Margin Type	Sediment thickness (km)	Sediment viscosity (Pa.s)	Upper plate thickness (km)	u_0 (cm/yr)	R_C (km)	u_T (cm/yr)	α_{wedge} ($^\circ$)	W_{wedge} (km)	h_{trench} (km)
1	SubdSed01	low-AW	5	$0.01 \times \eta_0$	80	<u>6.727-6.7</u>	<u>514.6484-514.6</u>	<u>-2.9119-2.91</u>	<u>23.4255-23.4</u>	<u>171.4541-171.5</u>	<u>-2.8382-2.84</u>
2	SubdSed02	low-AW	5	$0.1 \times \eta_0$	80	<u>6.7718-6.8</u>	<u>408.8925-408.9</u>	<u>-2.7225-2.72</u>	<u>20.4801-20.5</u>	<u>124.9362-124.9</u>	<u>-3.3691-3.37</u>
3	SubdSed03	FE-TC	5	η_0	80	<u>5.4276-5.4</u>	<u>319.7157-319.7</u>	<u>-1.525-1.52</u>	<u>17.3787-17.4</u>	<u>94.3482-94.3</u>	<u>-4.1917-4.19</u>
4	SubdSed04	high-u-AW	10	$0.01 \times \eta_0$	80	<u>6.131-6.1</u>	<u>708.9844-709.0</u>	<u>-1.7564-1.76</u>	<u>31.2584-31.3</u>	<u>266.5403-268.5</u>	-4.67
5	SubdSed05	high-AW	10	$0.1 \times \eta_0$	80	<u>9.332-9.3</u>	<u>519.104-519.1</u>	<u>-4.376-4.38</u>	<u>28.157-28.2</u>	<u>205.5639-205.6</u>	<u>-2.6026-2.60</u>
6	SubdSed06	FE-TC	10	η_0	80	<u>5.4405-5.4</u>	<u>308.8108-308.8</u>	<u>-1.5226-1.52</u>	<u>21.244-21.2</u>	<u>128.9402-128.9</u>	<u>-4.2016-4.20</u>
7	SubdSed01_50	high-AW	5	$0.01 \times \eta_0$	50	<u>6.5998-6.6</u>	<u>708.3037-708.3</u>	<u>-2.2749-2.27</u>	<u>26.8088-26.8</u>	<u>209.3449-209.3</u>	<u>-3.9974-4.00</u>
8	SubdSed02_50	high-AW	5	$0.1 \times \eta_0$	50	<u>7.4274-7.4</u>	<u>594.9156-594.9</u>	<u>-3.233-3.23</u>	<u>25.5747-25.6</u>	<u>149.9525-150.0</u>	<u>-3.8102-3.81</u>
9	SubdSed03_50	low-AW	5	η_0	50	<u>5.9242-5.9</u>	<u>397.1737-397.2</u>	<u>-1.9264-1.93</u>	<u>20.6625-20.7</u>	<u>105.5102-105.5</u>	<u>-3.7775-3.78</u>
10	SubdSed04_50	high-AW	10	$0.01 \times \eta_0$	50	<u>13.4398-13.4</u>	<u>617.7619-617.7</u>	<u>-7.2085-7.21</u>	<u>25.2127-25.2</u>	<u>208.2968-208.3</u>	<u>-1.5817-1.58</u>
11	SubdSed05_50	high-AW	10	$0.1 \times \eta_0$	50	<u>10.3734-10.4</u>	<u>629.6387-629.6</u>	<u>-5.0662-5.07</u>	<u>27.2371-27.2</u>	<u>204.1125-204.1</u>	<u>-2.6618-2.66</u>
12	SubdSed06_50	low-AW	10	η_0	50	<u>5.918-5.9</u>	<u>392.3118-392.3</u>	<u>-1.9238-1.92</u>	<u>24.0504-24.1</u>	<u>148.7363-148.7</u>	<u>-3.7849-3.78</u>
13	SubdSed01_100	low-AW	5	$0.01 \times \eta_0$	100	<u>6.8774-6.8</u>	<u>467.8223-467.8</u>	<u>-2.8441-2.84</u>	<u>21.8272-21.8</u>	<u>155.5387-155.5</u>	<u>-2.8897-2.89</u>
14	SubdSed02_100	FE-TC	5	$0.1 \times \eta_0$	100	<u>6.3013-6.3</u>	<u>351.5625-351.6</u>	<u>-2.4277-2.43</u>	<u>16.6464-16.6</u>	<u>103.3699-103.4</u>	<u>-3.5028-3.50</u>
15	SubdSed03_100	FE-TC	5	η_0	100	<u>5.0905-5.1</u>	<u>294.5964-294.6</u>	<u>-1.2357-1.24</u>	<u>14.8858-14.9</u>	<u>83.386-83.4</u>	<u>-4.1857-4.19</u>
16	SubdSed04_100	u-AW	10	$0.01 \times \eta_0$	100	<u>7.2866-7.3</u>	<u>596.5169-596.5</u>	<u>-2.3679-2.37</u>	<u>30.1553-30.2</u>	<u>247.4326-247.4</u>	<u>-4.0447-4.04</u>
17	SubdSed05_100	high-AW	10	$0.1 \times \eta_0$	100	<u>8.2337-8.2</u>	<u>494.5845-494.6</u>	<u>-3.6275-3.63</u>	<u>27.0269-27.0</u>	<u>198.0693-198.1</u>	<u>-2.7064-2.71</u>
18	SubdSed06_100	FE-TC	10	η_0	100	<u>5.0838-5.1</u>	<u>284.3424-284.3</u>	<u>-1.2265-1.23</u>	<u>18.5907-18.6</u>	<u>115.977-116.0</u>	<u>-4.1134-4.11</u>
19	SubdSed01_150	FE-TC /low-AW	5	$0.01 \times \eta_0$	150	<u>5.5265-5.5</u>	<u>273.763-273.8</u>	<u>-1.4631-1.46</u>	<u>13.9752-14.0</u>	<u>71.4896-71.5</u>	<u>-2.4593-2.46</u>
20	SubdSed02_150	FE-TC	5	$0.1 \times \eta_0$	150	<u>5.067-5.1</u>	<u>279.248-279.2</u>	<u>-1.018-1.02</u>	<u>11.3664-11.4</u>	<u>67.3686-67.4</u>	<u>-3.5097-3.51</u>
21	SubdSed03_150	FE-TC	5	η_0	150	<u>4.3101-4.3</u>	<u>260.0369-260.0</u>	<u>-0.6001-0.60</u>	<u>11.9206-11.9</u>	<u>66.8439-66.8</u>	<u>-3.8979-3.90</u>
22	SubdSed04_150	u-AW	10	$0.01 \times \eta_0$	150	<u>6.1352-6.1</u>	<u>349.5206-349.5</u>	<u>-2.3916-2.39</u>	<u>20.9114-20.9</u>	<u>136.2829-136.3</u>	<u>-2.5751-2.58</u>
23	SubdSed05_150	low-AW	10	$0.1 \times \eta_0$	150	<u>6.5457-6.5</u>	<u>333.933-333.9</u>	<u>-2.1902-2.19</u>	<u>20.4162-20.4</u>	<u>138.7542-138.8</u>	<u>-2.7802-2.78</u>
24	SubdSed06_150	FE-TC	10	η_0	150	<u>4.2999-4.3</u>	<u>247.9384-247.9</u>	<u>-0.59526-0.60</u>	<u>15.2628-15.3</u>	<u>93.0433-93.0</u>	<u>-3.8739-3.87</u>

Table 1. Simulations performed in this study. Margin type: ~~FE-TC~~ - tectonic erosion/coupling, low-AW - low-angle accretionary margin, high-AW - high-angle accretionary margin, u-AW - unstable accretionary margin. Reference viscosity is $\eta_0 = 2.8 \times 10^{20}$ Pa.s (upper mantle viscosity). Diagnostics (mean values): u_0 - convergence rate, R_C - radius of curvature, u_T - trench retreat, α_{wedge} - wedge angle, W_{wedge} - wedge width, h_{trench} - trench depth, h_{max} - maximum topographic amplitude in the upper plate, h_{mean} - mean topographic amplitude in the upper plate. Evolution of each diagnostic parameter is shown in Supplementary material.

	Slab (Subduction)	Sediment (Plate interface)	Upper plate (Topography)
Fixed Input Paramaters <u>input paramaters</u>	$\rho_{SP}, \eta_{SP}, h_{SP}$	ρ_{sed}	ρ_{UP}, η_{UP}
Variable Input Parameters <u>Varied input parameters</u>	—	η_{sed}, h_{sed}	h_{UP}
Diagnostics	u_0, R_C, u_T	$\alpha_{wedge}, W_{wedge}$	$h_{trench}, h_{max}, h_{mean}$

Table 2. Input and ~~diagnostics~~ diagnostic parameters. Input parameters ~~represent parameters that~~ are prescribed at the beginning of each simulation and ~~stay remain~~ the same throughout the evolution, while diagnostics are system-response parameters ~~that are the result of the dynamics of the system~~, and are calculated during model evolution. ~~Input parameters: ρ - density, η - viscosity, h - thickness, and subscripts~~ Subscripts represent: SP - subducting plate, sed - sediments, UP - upper plate. Input parameters: ρ - density, η - viscosity, h - thickness. Diagnostics: u_0 - convergence velocity between subducting plate and upper plate (~~horizontal motion between Marker 1 and Marker 3 in Figure 1~~), u_T - trench motion, R_C - radius of curvature, α_{wedge} - angle of accretionary wedge, W_{wedge} - width of accretionary wedge, h_{trench} - trench depth, h_{max} - maximum topography in the upper plate, h_{mean} - mean topography in the upper plate.

plate. In the first part of results, we describe end-member models of margin styles (accretionary ~~or tectonic erosion~~ and tectonic coupling) and the corresponding reference model results. In the second part, we analyse results from ~~all a large suite of~~ numerical models and investigate parameter correlations using the diagnostics presented above.

230 3.1 Margin styles and reference models

The outcome of each simulation is classified into three regimes: tectonic ~~erosion~~ (TEcoupling (TC)), low-angle accretionary wedge (low-AW), high-angle accretionary wedge (high-AW) (Figure 2, Table 1). The end-member division was done both qualitatively (i.e., formation of the accretionary wedge as seen in Figure 2, left column) and quantitatively using the evolution of diagnostics parameters (~~transient versus steady state~~) which is shown in Figure 3. We explain the individual classification
235 below. Details of subduction dynamics for each model evolution are included in the Supplementary material, as they have been extensively investigated and described in previous studies (i.e., adjustment of the model to initial conditions and development of slab curvature, formation of accretionary wedge, interaction of slab with the lower mantle).

We focus here on characterizing overall model outcomes from incipient subduction to slab consumption. The time taken for subduction to consume the slab varies for each model because the ~~velocity field~~ characteristic velocity (i.e., ~~subduction~~ velocity, convergence rate) ~~of the system~~ is controlled by interface processes ~~, in turn controlled by material parameters~~ (see
240 dependence of ~~end time and average time step of a simulations~~ average time-step size on convergence rate in Supplementary material, Figure S7). For this reason, we use a characteristic time ($t_{char} = t/t_{final}$) to highlight the entire model evolution in several figures (i.e., Fig. 3). Initial model time corresponds to $t_{char} = 0$, while final time t_{final} , corresponding to ~ 2500 km slab consumption, becomes $t_{char} = 1$. Every model simulation has an initial adjustment period of $t_{char} \sim 0.1$ in which the subduction

245 system acquires a natural curvature, and a final stage $t_{\text{char}} \sim 0.9$ in which the slab is consumed (grey intervals in Figure 3). These initial and final condition stages are excluded in our calculation of diagnostics parameters.

For the rest of the study, we adopt a color code for each regime: purple for tectonic ~~erosion~~coupling, yellow for low-angle accretionary wedge, and orange for high-angle accretionary wedge.

Tectonic ~~erosion~~coupling margin (TE~~TC~~TC). Figure 2a shows a typical simulation outcome of a tectonic ~~erosion~~coupling margin (model SubdSed03, with thin cover $h_{\text{sed}} = 5$ km and high viscosity of sediments $\eta_{\text{sed}} = \eta_0$). Evolution of diagnostics parameters is shown in Figure 3, and additional model evolution snapshots are shown in Supplementary material, Figure S3.

We classified simulations as ~~tectonic-erosion~~TC when the evolution of the radius of curvature, convergence rate, wedge angle and width, and trench rate ~~are in~~remain constant (steady-state(~~constant~~)) throughout the simulation (purple lines, Figure 3 and Supplementary material Figures S13-S15). The means during entire evolution of model (dotted purple lines) follow 255 closely the ~~evolution~~ diagnostics.

The low convergence velocity and trench retreat rate maintained throughout the simulation (Figure 3b,e) suggest a high degree of coupling between the subducting slab and upper plate. Figure 2a-B shows that the motion between subducting and upper plate in ~~tectonic-erosion~~TC margin is accommodated in the middle of the sediment layer, a region of high strain-rates. Instead, very low strain-rates just below the slab suggest a rigid-body rotation of the slab in order to maintain a constant radius 260 of curvature. The radius of curvature remains small as seen in Figure 2a-C, with a steeply-dipping slab.

Entrainment of sediments within upper plate material at the interface (Figure 2a-A) is indicative of some erosion of the upper plate. All simulations with high viscosity sediments show this behaviour (Supplementary material, Figures S13-S15, cases with $\eta_{\text{sed}} = \eta_0$), which could be regarded as having a stronger interface (i.e, a more mafic cover and/or lack of weak unconsolidated sediments).

265 Topographic signals in ~~tectonic-erosion~~TC models (trench depth, maximum and minimum topography in the upper plate) show more variability in Figure 3, which ~~will be~~is discussed later.

Accretionary Wedge margin (AW). When the viscous coupling is reduced, sediments are scrapped off the subducting slab to form an accretionary wedge (Figure 2b-c). We identify two types of accretionary margins: low- and high-angle accretionary wedges, primarily controlled by the thickness of sediments in cases of low-viscosity sediments. Evolution of diagnostics pa- 270 rameters is shown in Figure 3 (yellow and orange lines), and additional model evolution snapshots are shown in Supplementary material, Figures S4-S5.

The distinction between the two cases comes from the behaviour of the slab: ~~low-angle~~accretionaryAW margins have increasing radii of curvature, wedge properties, but ~~fairly~~roughly constant convergence rate (Figure 3b), while high-angle ~~accretionary~~AW margins result in flat ~~slab~~ subduction with large radii of curvature and irregular behavior of the convergence 275 rate. In high-angle ~~accretionary~~marginAW simulations, in a first stage of evolution, ~~sediments~~accumulationaccumulation of sediments lubricates the interface and promotes fast convergence rates, but once the wedge reaches a critical size and slab curvature is too large (i.e., subduction needs to accommodate horizontal slab motion), subduction rate is inhibited. When this stage is reached, plate convergence may happen at slower rates than in ~~tectonic-erosion~~TC simulations.

Accretionary margins models are favoured by lower sediment viscosities ($\eta_{\text{sed}} = 0.01 \times \eta_0$). By increasing the thickness of
280 the sediments, more sediment is available to create a thicker wedge (high angle and width). The larger the wedge angle, the
larger the radius of curvature, suggesting that wedge geometry has a control on slab bending (Figure 3a-d).

The interface dynamics is also different with increasing availability of weak sediments. The velocity field at the subduction
interface suggests internal counter-clockwise flow inside accretionary wedges, detached from both corner flows in the mantle
(Figure 2B). Plate motion is also accommodated at the base of the sediment wedge, indicated by high strain-rates. Despite
285 the unrealistically large geometry of the wedge, Figure 2c-B shows that the accretionary wedge can impede motion within
the upper plate. However, we are not concerned here with further details of internal wedge dynamics compared to numerous
previous studies because we ~~also~~ lack the numerical resolution required (i.e., Ruh (2017); Menant et al. (2020)).

A ~~third margin style of a~~ highly-unstable accretionary wedge margin is shown in ~~the~~ Supplementary material (e.g., results
of SubdSed04_100 in Figures S6, S13-S15). In these cases, the accretionary wedge reaches a critical angle, and instead of
290 moving laterally, material is being expelled down the subduction channel. The wedge will continue to deform and grow again
until it reaches a new critical angle. This unstable mode occurs in simulations with thick upper plate ~~thickness~~, which acts as
a deformable backstop, in combination with accumulating weak ~~and thick~~ sediments. This margin style is a consequence of
the density model chosen here, in which sediments have the same density as the rest of the lithosphere. Clearly, this is an
overestimated effect.

295 3.2 Major Impacts on Subduction Dynamics

Although material within the weak layer at the plate interface (i.e., between the subducting and upper plates) is a volumetrically
insignificant component of the larger plate-mantle coupled system, we observe this small feature can exert a profound influence
on the emergent regional-scale subduction dynamics. Figures S10 and S11 show models with the strongest sediment layers
(~~$\eta_{\text{sed}}/\eta_{\text{sed}} = \eta_0$~~) have sub-vertical slab morphologies, smaller values of R_C , and slower trench retreat rates than similar models
300 with weaker sediment layers (~~$\eta_{\text{sed}}/\eta_{\text{sed}} = 0.01 \times \eta_0$~~). Stronger sediment layers also stabilize the subduction system as seen
in Figure S12, in which much larger variations in R_C occur for models in column A than column C, where values remain
approximately constant. The steady-state values of R_C can vary by more than a factor of two due to the viscosity of the
sediments, with model SubdSed06_50 having 400 km while models SubdSed04_50 and SubdSed05_50 both evolve such that
 R_C exceeds 800 km. For these models, a similar increase of more than a factor of 2 can also be observed in convergence rate
305 (Figure S14) and trench motion (Figure S15).

It is not just the low strength of the sediment layer that influences the system, but also the thickness of the upper plate.
The dynamics of the plate interface depend on the total length of contact area between the two plates as well as the thickness
and strength of the material between them (Beall et al., 2021). Comparisons of models that are otherwise identical except for
having different upper plate thicknesses (Figure S11, columns a-A and b-A) exhibit more shallow-angled and variable slab
310 morphologies for those models with thinner upper plates.

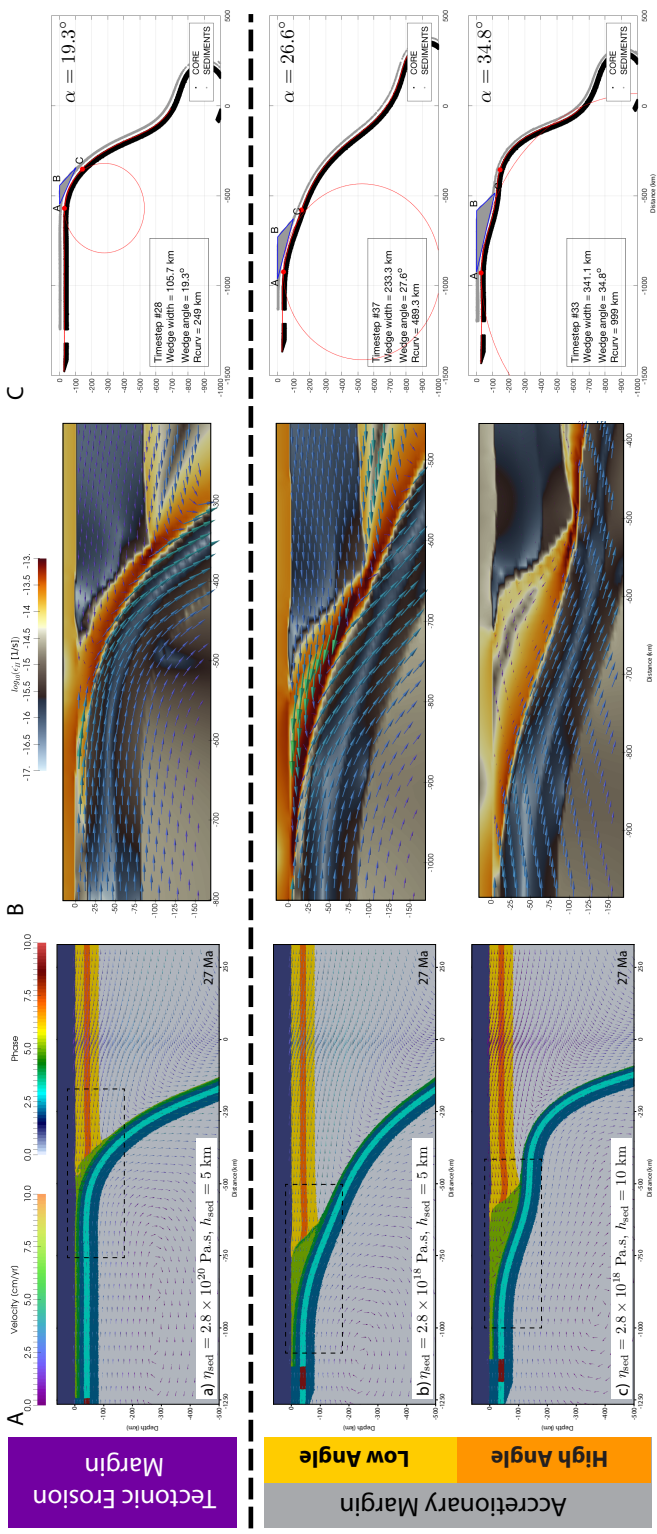


Figure 2. Margin style end-member results. a) Tectonic ~~erosion~~ coupling margin (~~TE~~IC, reference model SubdSed03), b) Low-angle accretionary margin (~~AW~~low-AW, reference model SubdSed01), c) High-angle accretionary margin (~~AW~~high-AW, reference model SubdSed04). A. Left column shows model snapshots at 27 Ma, B. Middle column shows second invariant of strain rate, $\dot{\epsilon}_{II} = (\dot{\epsilon}_{ij}\dot{\epsilon}_{ij})^{1/2}$ and velocity field as arrows in an enlarged area of the subduction interface, and C. Right column shows core and sediment markers τ with calculated radii of curvature, wedge angles and widths. ~~Tectonic erosion~~IC margin shows low-angle wedges and small radius of curvature. When an accretionary wedge forms τ in cases of ~~lower sediment viscosity~~low-viscosity sediments, the wedge angle and width increases over time, together with the radius of curvature. In high-angle ~~accretionary~~AW margins (c), episodes of flat ~~slab may occur~~, ~~and strongly influence~~ subduction with strong plate bending may occur. Time evolution of diagnostic parameters for the reference cases are shown in Figure 3.

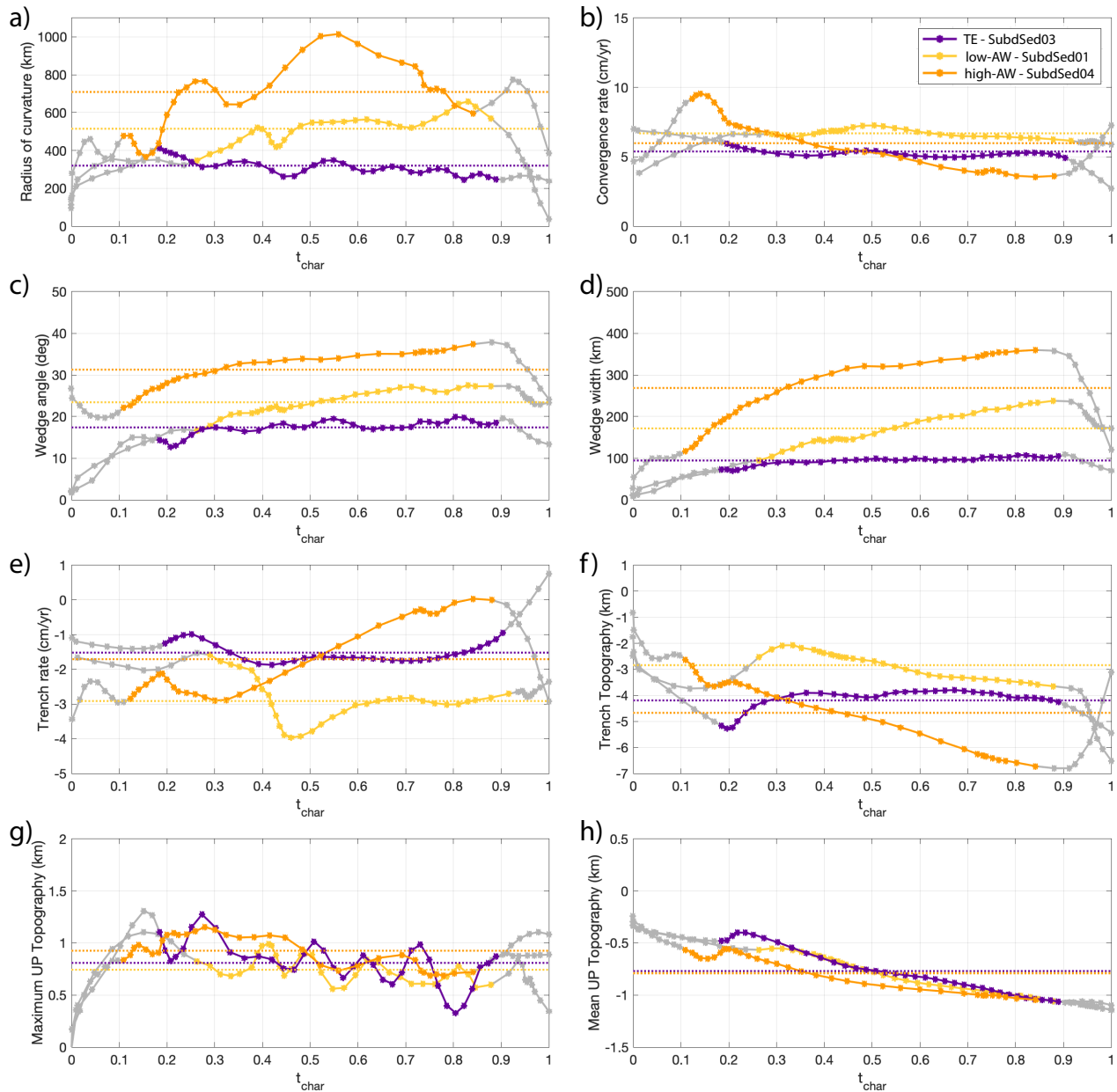


Figure 3. Evolution of diagnostic parameters for end-member reference models: Tectonic erosion-coupling - SubdSed03 (purple), low-angle accretionary margin - SubdSed01 (yellow), high-angle accretionary margin - SubdSed04 (orange). a) Radius of curvature, b) convergence rate, c) wedge angle, d) wedge width, e) trench rate, with positive values indicating trench advance and negative values indicating trench retreat, f) trench depth, g) Maximum-maximum topographic amplitude in the upper plate (hmax), h) Mean-mean topographic amplitude in the upper plate (hmean). Continuous lines represent model data, while dotted lines represent the mean over entire simulation time. Characteristic time t_{char} is defined in the main text. Grey portions represent initial and final conditions, corresponding to the system forming its natural slab curvature, and to the last stage of slab consumption. The two stages are excluded from calculating the means.

3.3 Parameter analysis

In this section, we investigate correlations between the means of the diagnostic parameters for all simulations (Figures 4 and 5). The diagnostics parameters can then be compared to similar parameters observed in the global subduction system.

Figure 3 shows that the evolution means characterize the margin style of each simulation. For each diagnostic parameter, we calculate the mean value (Figure 3, dotted lines) and the variability during evolution (minimum and maximum values). The means in ~~TE-TC~~ models remain close to the evolution curves (i.e., steady-state with the mean close to the min/max values). In AW models, the means differ significantly from the evolution curves. Therefore, the min/max values during time evolution reflect this larger variability (grey bars in Fig. 4 and 5). Diagnostic means are given in Table 1 and evolution curves are shown in Supplementary material (Figures S13-S18).

Figure 4 shows correlations between subduction and sediment diagnostic parameters, while Figure 5 shows correlations between sediment and topography diagnostic parameters. In both figures, each colored point represents the mean value in a simulation, and the grey bars represent variability intervals (min/max values). The colorscale represents the margin type, identified as in the previous section. ~~TE-TC~~ simulations (purple) ~~immediately~~ have smaller variability bars, ~~also~~ emphasizing steady-state. On the other hand, AW models have larger variability bars (largest for high-angle AW), suggesting transient evolution for that diagnostic.

We find strong correlations between sediment parameters and subduction parameters in 2-D numerical models (Figure 4). Convergence rate correlates well with radius of curvature, wedge angle and width (panels a-c). ~~TE-TC~~ models have low convergence rates, radii of curvature, but also small accretionary wedge properties (angle and width). As seen in previous section, with increasing sediment availability (thickness) and/or decreasing sediment viscosity, wedges form more readily. Figure 4 shows that AW models register higher convergence rate, higher radii of curvature and larger wedge properties. This indicates that sediments lubricate the subduction interface, promoting faster convergence rates. The rate of trench motion is also influenced by the dynamics of subducting sediments, with sediment-rich AW trenches retreating faster (panel d).

Figure 5 suggests weaker correlations between sediment and topography parameters. In panels b-j, ~~TE-TC~~ models tend to produce higher maximum topography and deeper trench depths (i.e., extreme amplitudes), while AW models produce lower extreme signals, but higher mean values. The weaker correlation of sediments diagnostics with topographic signals is likely due to the nature of the upper plate (i.e., oceanic/continental, free/attached plate to side walls). In our set of simulations with ocean-ocean subduction and unattached upper plate, stresses accumulated at the plate interface are accommodated in trench motion, instead of upper plate deformation. Topographic signals for simulations with a fixed upper plate are shown in Figure S9, which are higher and more distinct for end-member models, as subduction is now accommodated more in deformation of the upper plate, and less in trench motion. Topography also builds faster in continental lithosphere compared to oceanic lithosphere due to less resistance against gravity (Pusok and Kaus, 2015). Investigation of the effect of sediments on topography signals with a continental upper plate is reserved for a future study.

To summarize, ~~tectonic-erosion-TC~~ models suggest a stronger coupling at the plate interface, yielding lower radii of curvature, slower convergence rates and higher topographic signatures. ~~TE-TC~~ margins also retreat slower compared to AW margins.

345 These correlations and simulation snapshots suggest that dynamics of the wedge controls the bending of the slab and the radius of the curvature.

4 Discussion

Our results show three modes of subduction interface: tectonic ~~erosion~~coupling margin, low-angle accretionary wedge margin, and high-angle accretionary wedge margin. We obtain a diverse response in subduction geometry to just a few varied input parameters: sediment viscosity and thickness, and upper plate thickness. The focus of our analysis is solely on the effect of low-viscosity sediments on large-scale subduction dynamics. Other parameters have also been shown to be important (i.e., density of sediments, ~~age of slab, thermal structure, upper plate structure~~thermal structure of plates) that will be discussed below.

The viscosity of sediments represents the critical parameter, and thickness as a secondary parameter in our simulations. High-viscosity sediments lead to ~~tectonic erosion~~TC margin, while low-viscosity sediments lead to ~~accretionary wedge~~AW margins (Table 1). Sediment thickness controls the availability of sediments to be accumulated in accretionary wedges. A detailed analysis of Figures S10-S18 shows that the thickness of the upper plate plays an important role in determining the subduction interface length and the depth at which sediments can be locked into an accretionary wedge. For the same thickness of sediments, when the upper plate is thinner, the accretionary wedge is volumetrically smaller, but wider and with ~~high wedge~~a higher angle, while for a thick upper plate, sediments are distributed across the entire interface into a thinner layer ~~with a small wedge angle, leading to tectonic erosion~~indicative of tectonic coupling (i.e., compare results of SubdSed02_50 for 50 km thick upper plate, and SubdSed02_150 for 150 km thick upper plate in Figure S11).

4.1 Parameter correlation and observations

A common approach to constrain the effect of different parameters that control subduction dynamics has been done considering the statistical analysis of present-day subduction zones (Supplementary material, Figure S2) (Clift and Vannucchi, 2004; Lallemand et al., 2005; Wu et al., 2008; De Franco et al., 2008; Heuret et al., 2012). Our diagnostic parameter analysis in Section 3.3 ~~attempts to create~~builds a bridge between these studies and numerical models, as diagnostics from numerical models are often not comparable with those from statistical analyses. There remain a number of fundamental differences between our results and these studies. Present-day subduction parameter correlation represent only current snapshots and do not always account for the evolution stage of a given subduction system. Our analysis considers the entire evolution of a subduction system ~~and evolution averages~~. Moreover, natural subduction zones have variable sediment influxes, changing boundary conditions and multi-phase physics. On the other hand, the numerical model setup is ideal and simplified, which is further discussed below.

Despite these differences, we succeed in obtaining subduction margins that ~~accrete sediments~~accumulate sediments in accretionary wedges, and ones that ~~are erosive~~do not, and instead conserve the subduction interface geometry. The low-accretion margin obtained in numerical results - tectonic coupling (TC), is assumed to be analogous to the tectonic erosion observed in nature. The limitations of this assumption are discussed in the next section. Our results then agree with findings in Clift and

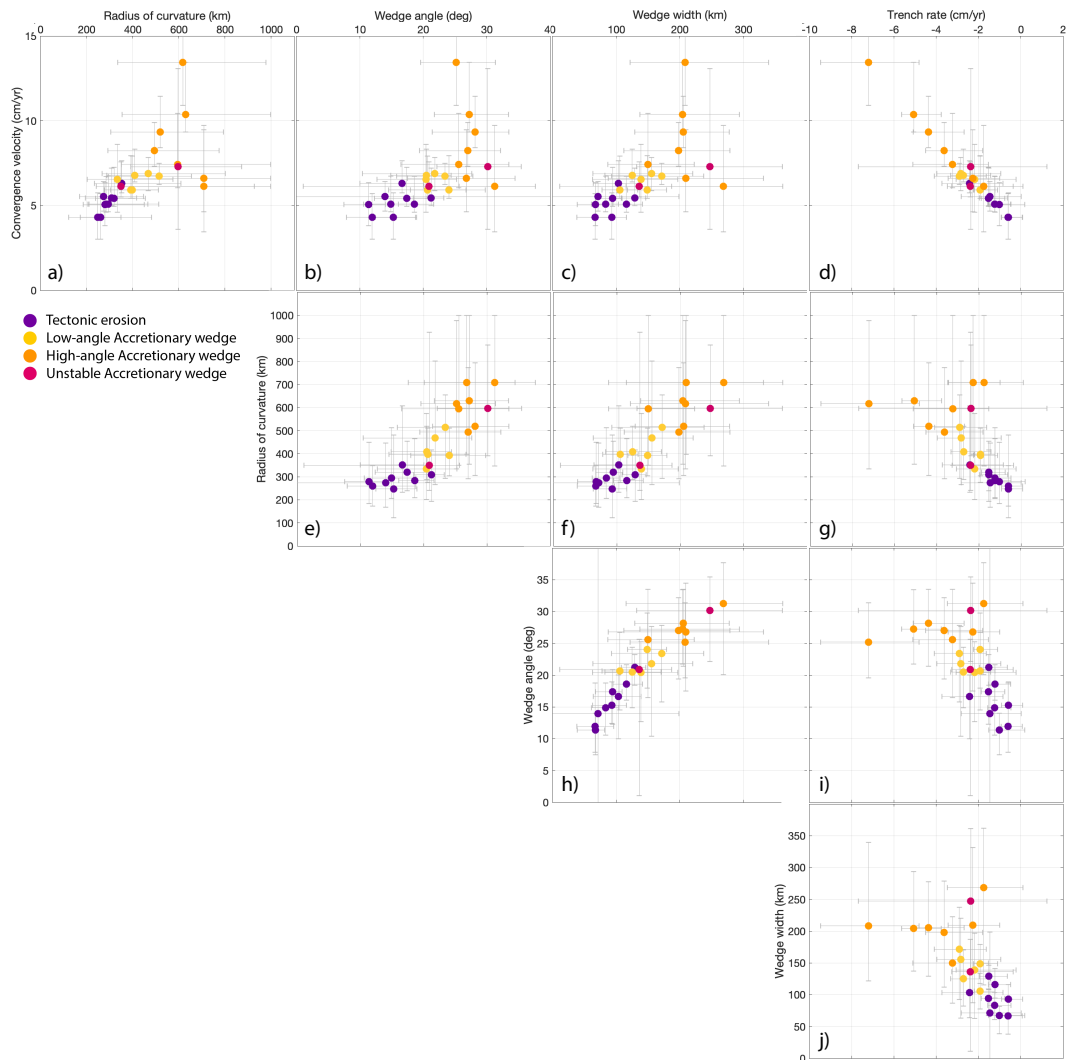


Figure 4. Subduction versus sediment diagnostic parameters. Each point represents the evolution mean of the given parameter in a simulation, and the grey bars represent the variability intervals (see Figure 3 on how the mean is calculated). Initial and final stages of the evolution are removed from calculations. **Tectonic erosion-TC** models (purple) have lower variability in diagnostics than **accretionary wedge-AW** models (yellow/orange). **a)** Radius of curvature and convergence velocity. Small radii of curvature are correlated with small convergence velocities. **b-c)** Small wedge properties (angle and width) are also correlated with low convergence rates and radii of curvature. We observe clear correlations between margin types and diagnostics. **Tectonic erosion-TC** margins have low convergence velocities, small radii of curvature, and wedge properties. **Accretionary wedge-AW** models have higher radii of curvature, faster convergence velocities and larger wedge properties.

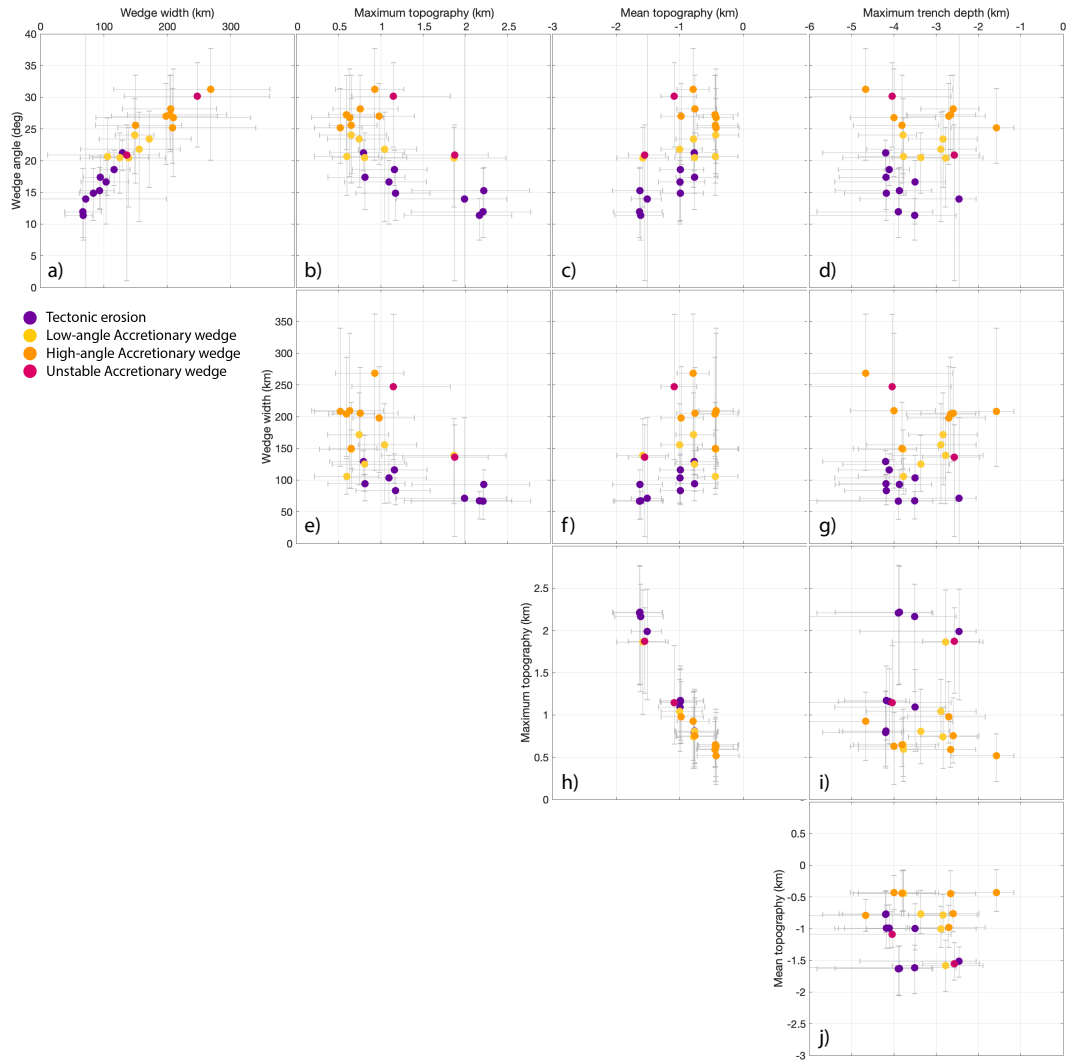


Figure 5. Sediment versus topography diagnostic parameters. Each point represents the evolution mean of the given parameter in a simulation, and the grey bars represent the variability intervals (see Figures 3 and 4). **Tectonic erosion-TC** models yield smaller trench depths and mean topography, and higher maximum topography in the upper plate. The weaker correlations are due to the nature of the upper plate, which is considered oceanic and unattached to the right boundary, so any topographic signal is smaller than it would be for continental upper plate lithosphere. Topographic signals for simulations with fixed upper plate are shown in Figure S9, which are higher and more distinct for end-member models.

Vannucchi (2004). Accretionary margins form in simulations with thicker and weaker sediment covers entering the trench, while tectonic ~~erosion-coupling~~ margins form in simulations with less sediment cover (~~high-viscosity-high-viscosity~~ sediments are representative of a stronger crust and mantle component at the slab surface). Replotted data from Wu et al. (2008) and
380 using the margin classification from Clift and Vannucchi (2004) (Supplementary material, Figure S2), shows that accretionary margins also tend to have larger radii of curvature, which is consistent with our numerical results. A recent study obtained similar correlations between margin style and ~~convergence-rate-and~~ radii of curvature (Brizzi et al., 2021).

Our findings using slab curvature are consistent with observations on slab dip. Diversity of subduction zones is generally investigated through the perspective of slab orientation (i.e., Beall et al. (2021); Riel et al. (2018)). Many analogue and numerical
385 studies used slab dip as the preferred diagnostic for slab orientation instead of slab curvature (i.e., Heuret et al. (2007), Section 2.2). They suggest that slab dip depends on properties of the subducting plate, mantle, overriding plate, and the coupling between the subducting and overriding plate (e.g., Bellahsen et al. (2005); Heuret et al. (2007); Billen and Hirth (2007); Schellart et al. (2007); Funicello et al. (2008); Babeyko and Sobolev (2008); Duarte et al. (2013); Riel et al. (2018)). We find that coupling at the plate interface due to sediment influxes can strongly influence bending of the slab (~~exemplified by the~~
390 ~~radius of curvature~~). ~~TE~~. ~~TC~~ models have small R_C (large dip), while AW models have large R_C (small dip). The nature of upper plate (oceanic or continental), however, will further influence these correlations by changing the load on subduction interface, which should be investigated further.

Topographic signals have been incorporated less in both statistical and numerical studies of subduction zones, despite the fact that topography is a direct and easily acquirable observable (i.e., Pusok and Kaus (2015); Riel et al. (2018)). In higher resolution
395 models, Menant et al. (2020) found that deep accretion processes influence forearc topography over time, but did not compare the effect in both accretionary and erosion margins. In our ocean-ocean subduction, we see a lesser control of sediments on topographic diagnostics, with ~~tectonic-erosion-TC~~ margins yielding deeper trenches. However, the effect increases when the upper plate is attached to the ~~right-domain~~ wall (Supplementary material, Fig. S9). This is because the subduction interface stresses are transferred in the upper plate (i.e., topography build-up) rather than accommodated in trench retreat.

400 4.2 Convergence rate and margin type

Results from numerical models suggest strong correlations between margin type and convergence rate (Figure 4). Convergence rates in AW models are faster than in ~~tectonic-erosion-TC~~ models, as sediments help lubricate the interface and reduce coupling between subducting and upper plate. ~~A special case could be~~ ~~An exception is~~ the high-angle AW model results (Figure 3b), where the convergence rate is faster in the growing-stage of the accretionary wedge, but once it reaches a critical value, the con-
405 vergence rate becomes slower than in the case of tectonic ~~erosion~~. ~~Behr and Becker (2018) and Brizzi et al. (2021) coupling~~. ~~Behr and Becker (2018)~~ obtain similar predictions, in which weaker (lower viscosity) sediments promote faster convergence rates. However, observations ~~of the global subduction system~~ suggest an inverse correlation between convergence rate and margin type (~~see~~ Supplementary material, Figure S2), with tectonic erosion margins subducting faster than accretionary wedge margins. ~~Most likely, this~~ ~~Brizzi et al. (2021) obtained lower convergence rates for accretionary margins, but analyzed numerical~~
410 ~~results only at a time instance in model evolution~~. The inverse correlation between convergence rate and margin type ~~in the~~

global subduction system may also suggests that we do not capture all complex processes happening at the subduction interface (von Huene et al., 2004).

The dominant mechanisms governing accretionary and tectonic erosion margins are different. The style of deformation within accretionary wedges is thin-skinned, that is, associated thrusts and folds are uncoupled from the underlying oceanic
415 crust by a basal decollement with a large amount of displacement (Weiss et al., 2018; Angiboust et al., 2021). The dynamics of accretionary wedges ~~can become~~ is more complex if one considers multiple types of sediments, fluid pressure and deformation mechanisms (Ruh, 2017; Menant et al., 2020). In accretionary margins, ocean sediments are available to lubricate the interface, while little sediments enter tectonic erosion margins. However, in tectonic erosion margins, the subducting plate may erode the basement of the upper plate, and create further debris along the plate interface (von Huene et al., 2004). In any given
420 system, both processes may be occurring simultaneously, either in time and space or at the same time in different parts of the subduction zone (Clarke et al., 2018; Comte et al., 2019; Ducea and Chapman, 2018; Straub et al., 2020). ~~We do not account for these detailed processes-~~ At the physics level, these interface processes are governed by hydraulic fracturing, melting and deformation of multi-phase media, which are not accounted for in our numerical models.

Moreover, it is unclear whether sediment influxes affect convergence rate, or convergence rate affects sediment accumulation
425 at trench, or both. Accretion is generally favored by slow convergence (<7.6 cm/yr) (Silver et al., 1985; von Huene and Scholl, 1991a; Clift and Vannucchi, 2004; Syracuse et al., 2010), while fast convergence favors larger volumes of sediment to be dragged down at the interface, thus lubricating the interface. Erosive margins tend to occur in regions where the convergence rate exceeds 6 cm/yr and where the sedimentary cover is thin (Straub et al., 2020). Testing this hypothesis requires different experimental setups: one in which convergence rate evolves dynamically ~~due to sediments~~ in response to sediment input, and
430 second, in which the convergence rate is prescribed and sediments deform accordingly. Here, we tested the first scenario, where the convergence rate is the dynamic response of the system due to incoming sediments at the trench. We briefly tested the second scenario in Supplementary material, Figures S8-S9, with kinematic boundary conditions. Imposed convergence with a fixed upper plate reduces the amount of trench retreat, and the variation of diagnostic parameters is smaller among end-member cases, but the correlations remain valid. Menant et al. (2020) investigated the dynamics of accretionary margins
435 as a function of convergence rate to find that more sediment and crustal material is subducted at higher convergence rates.

4.3 Sediment fluxes to trench and to depth

Sediment fluxes to depths below the lithosphere influence the amount of volatiles recycled into the mantle (Plank and Langmuir, 1998; van Keken et al., 2011; Plank and Manning, 2019). The type of margin may also affect how much sediment gets subducted into the mantle. It has been proposed that tectonic erosion margins can subduct higher percentages of sediment influx, however,
440 large volumes of continental crust are subducted at both erosive and accretionary margins (von Huene and Scholl, 1991a; Clift and Vannucchi, 2004). Clift and Vannucchi (2004) calculated that accretion is a relatively inefficient process for cleaning sediment off the oceanic basement and that 70% of the sediment column is likely subducted to great depths below the forearc.

Here, we calculate the volume fraction of sediments accreted and subducted in the mantle below the lithosphere in our reference models (Figure 6). We find that ~~tectonic erosion margin subducts~~ TC margins subduct higher percentage of influx

445 sediments than ~~accretionary~~-AW margins. The total percentage of sediments subducted right before the slab was consumed in ~~tectonic erosion margin~~-TC margins was 60%, while in ~~accretionary~~-AW margins the percentage remains at ~10%. However, considering that ~~tectonic erosion~~-TC margins have a smaller sediment cover (and influx), accretionary margins may in total subduct a larger volume of sediments. For example, ~~both~~-50% of a 1 km column of influx sediments ~~and is equivalent to~~ 10% of a 5 km column of influx sediments ~~give~~, which gives 500 m column of subducted sediments. We ~~conclude~~-suggest that both
450 tectonic erosion margins and accretionary wedges can subduct a high volume of sediments, but at different rates relative to influx material.

This is, however, a simplistic view of sediment subduction to depth. As sediments approach the trench, they can be accreted in the trench, subducted into the mantle, accreted structurally to the bottom of the upper plate ~~after initial downward transport, and, or~~ returned to the upper plate ~~either via magmatism with partial melting of the downgoing sediment via magmatism,~~
455 diapirism, or some other form of ~~diapirism or~~ partially-molten upward transport (Gerya and Yuen, 2003; Currie et al., 2007; Tian et al., 2019). To model all these processes requires future development of multi-physics models that is beyond the scope of this study.

~~In this study, we considered a steady-state (constant)~~ We also considered a constant sediment flux to the trench. Sediment subduction is neither a steady-state nor a globally averaged process (Plank and Manning, 2019) and can have major implications
460 for subduction dynamics. Modern oceanic sediments cover 70% of the ~~planet~~¹⁰⁰⁰planet's surface, but sediment distribution and lithology occur in drastically different proportions globally (Dutkiewicz et al., 2015, 2018). Moreover, the oceanic lithosphere is covered by various sediment types depending on the depth, proximity to continental margins, and interactions with the oceanic currents and biosphere. For example, an abundant carbonate cover is subducted at the Central American margin, while little sedimentary carbonate is subducted along the Tonga, Central Aleutian and ~~Kuriles~~¹⁰⁰⁰Kuriles? Kamchatka trenches
465 (Plank and Langmuir, 1998; Plank and Manning, 2019). The global sedimentary cover also varies in both space and geological time, with greatest volume in the geologically recent and decreasing exponentially with increasing age (Peters and Husson, 2017).

We expect the abundance and lithology of sediments at trenches to influence the mode of occurrence of margin styles in space and geologic time. The subduction interface structure and properties are sensitive to the composition of the material
470 that is being subducted (Behr and Becker, 2018). Our results cover broadly the end-member scenarios. The degree to which variability in these influxes impacts long-term subduction dynamics remains debated (Cloos and Shreve, 1988; Duarte et al., 2015; Behr and Becker, 2018) and should be studied with further numerical modelling.

4.4 Model limitations

In order to be able to address the points above, a number of model improvements are needed. The models shown here provide an initial experiment on the viscosity of sediments, where we considered constant sediment fluxes at the trench. Future
475 work should explore the effect of other ~~material parameters (i.e., sediment properties)~~ (density, lithology ~~of sediments, as in Currie et al. (2007)~~), and active surface processes such as erosion and sedimentation for potential delivery of continental sediments to the trench. The effect of sediments is overestimated in some of our model outcomes, especially in models with

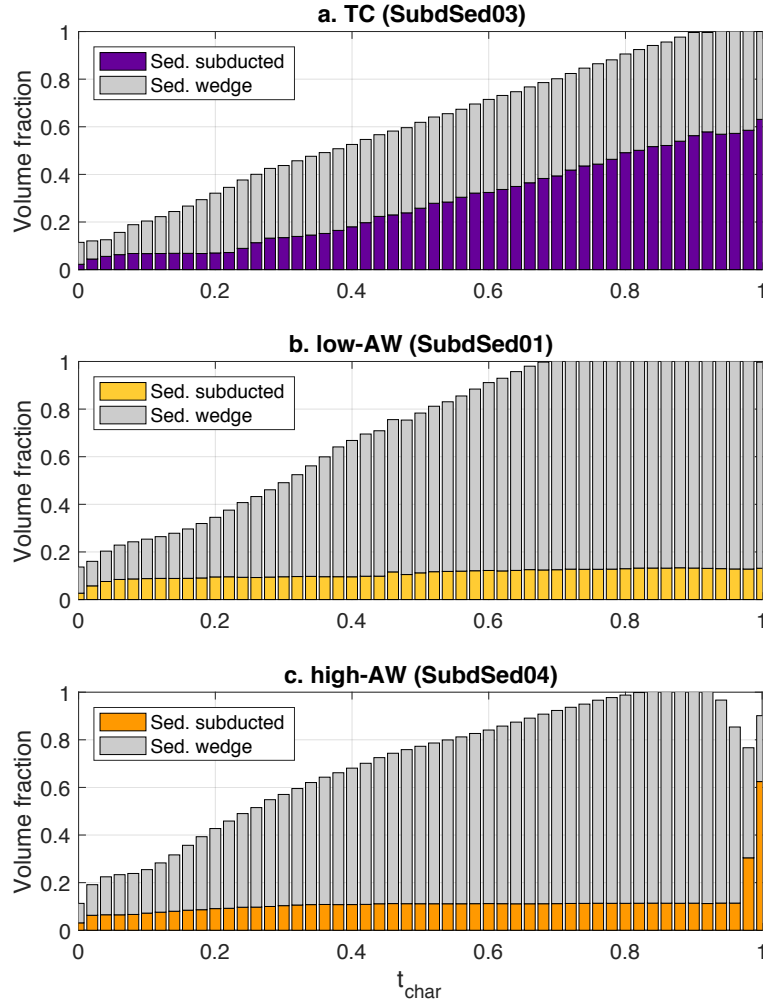


Figure 6. Evolution of total volume fraction of sediments accumulated in accretionary wedge and subducted to depth in the mantle for the three reference cases: a) Tectonic erosion-coupling (SubdSed03), b) low-angle Accretionary wedge (SubdSed01), c) high-angle Accretionary wedge (SubdSed04).

unrealistically large wedges. Thinner and lighter sediment covers require higher resolutions at the trench, which could also help connect results with those from high-resolution accretionary wedge models (Menant et al., 2020).

Despite our simplified model, mechanical coupling between plates should not ~~just~~ be investigated only in variations in subduction velocity or dynamics, but also in the type of margin: accretionary or erosion. ~~The~~ We propose that the definition of subduction interface in numerical models could ~~also~~ be relaxed. A recent methodological analysis (Sandiford and Moresi, 2019) investigated the emergence of significant spatial and temporal thickness variations within the interface zone, with the sole focus of maintaining a constant thickness through time. Instead, ~~Beall et al. (2021); Riel et al. (2018)~~ Beall et al. (2021) and Riel et al. (2018) also investigated variations in interface thickness as potential ~~controlling factor of~~ factor controlling the dynamics. All these studies, in fact, highlight the tendency for the subduction interface to develop spontaneous thickness variation as the models evolve. The interface widens near the trench, building a prism-like complex, and thins at depths beyond the ~~brittle~~ brittle ductile transition. This pattern was also noted in the boundary element models of Gerardi et al. (2019), who attributed a down-dip thickness variation to lubrication layer dynamics. However, natural observations suggest that variable subduction fluxes enter the subduction trench, questioning this approach of constant thickness interface layer.

5 Conclusions

Systematic 2-D numerical simulations of ocean-ocean subduction are run to investigate how ~~low-sediment~~ low-viscosity sediment influence subduction dynamics and plate coupling. The aim is to understand what causes convergent margins to either accrete material delivered by the subducting plate or, alternatively, to subduct the trench sediment pile and even erode the basement of the overriding plate. We obtain end-member cases that are governed primarily by sediment viscosity and thickness: accretionary and tectonic ~~erosion margins.~~ coupling margins. Results from a large suite of numerical simulations represent a continuum between these end-member models. We find that the properties of the sediment layer modulate the extent of viscous coupling at the interface between the subducting and upper plate. When the viscous coupling is increased, ~~an erosive~~ style ~~a tectonic-coupling-style~~ of margin is favoured. On the other hand, when the viscous coupling is reduced, sediments are scrapped off the subducting slab to form an accretionary wedge. The geometry of the wedge controls the bending of the slab and the radius of the curvature. We perform an automated analysis of diagnostic parameters to differentiate between the two end-member modes of margin type and to better understand fundamental differences between them. Strong correlations between sediment, subduction diagnostics and margin type are observed. Tectonic ~~erosion-coupling~~ margins have smaller radii of curvature, wedge parameters and slower convergence rate, while accretionary margins are dominated by larger sediment wedges that can strongly influence subduction dynamics. With some limitations, tectonic coupling margins obtained here are analogous to tectonic erosion margins observed in nature.

~~However, a more detailed study on the effect of sediments is needed, especially on buoyancy of sediments~~ A more careful examination of sediment properties and other complex processes happening at the subduction interface in both accretionary and erosive margins is necessary. The margin type ~~,accretionary or tectonic erosion,~~ is intimately linked to earthquakes. The amount of sediments filling the trench was proposed to facilitate seismic rupture (Heuret et al., 2012; van Rijsingen et al., 2018;

Brizzi et al., 2020). Subduction zones with large amounts of trench sediments positively correlate with the occurrence of great interplate earthquakes.

515 *Code and data availability.* The Bitbucket version of the numerical code (LaMEM) used can be found here: https://bitbucket.org/bkaus/lamem/branch/cvi_test, and the repository containing the input parameters files to reproduce the data can be found here: <https://adina@bitbucket.org/adina/rep-msubdsd.git>. The full simulation data (> 100Gb) presented in this study can be provided on request from AP.

Author contributions. AP and DS designed the study, AP built the numerical model and performed the analysis, MK helped run and analyze part of the simulations during REU internship. AP wrote first draft of manuscript, all authors contributed equally to the revision of this manuscript.

520 *Competing interests.* The authors have no competing interests.

Acknowledgements. A.E.P. is grateful for postdoctoral research funding from the the Cecil H. and Ida M. Green Foundation, UCSD. In addition, all authors are grateful for support from the National Science Foundation Grant No. EAR-1255040. The numerical simulations were performed on Comet (San Diego Supercomputing Center) within the Extreme Science and Engineering Discovery Environment (XSEDE), which is supported by National Science Foundation grant number ACI-1053575. We thank ~~two anonymous reviewers~~ three anonymous reviewers and Editor Susanne Buitert for their instructive comments that helped improve the manuscript.

525

References

- Agard, P., Plunder, A., Angiboust, S., Bonnet, G., and Ruh, J.: The subduction plate interface: rock record and mechanical coupling (from long to short timescales), *Lithos*, 320-321, 537–566, <https://doi.org/10.1016/j.lithos.2018.09.029>, 2018.
- 530 Agrusta, R., Goes, S., and van Hunen, J.: Subducting-slab transition-zone interaction: Stagnation, penetration and mode switches, *Earth Planet. Sc. Lett.*, 464, 10–23, <https://doi.org/10.1016/j.epsl.2017.02.005>, 2017.
- Angiboust, S., Menant, A., Gerya, T., and Oncken, O.: The rise and demise of deep accretionary wedges: A long-term field and numerical modeling perspective, *Geosphere*, 17, 1–35, <https://doi.org/10.1130/GES02392.1>, 2021.
- Babeyko, A. and Sobolev, S.: High-resolution numerical modeling of stress distribution in visco-elasto-plastic subducting slabs, *Lithos*, 103, 205–216, <https://doi.org/10.1016/j.lithos.2007.09.015>, 2008.
- 535 Bangs, N. L., Morgan, J. K., Tréhu, A. M., Contreras-Reyes, E., Arnulf, A. F., Han, S., Olsen, K., and Zhang, E.: Basal accretion along the south central Chilean margin and its relationship to great earthquakes, *Journal of Geophysical Research: Solid Earth*, 125, 1–21, <https://doi.org/10.1029/2020JB019861>, 2020.
- Beall, A., Fagereng, A., Davies, J. H., Garel, F., and Davies, D. R.: Influence of subduction zone dynamics on interface shear stress and potential relationship with seismogenic behavior, *Geochemistry, Geophysics, Geosystems*, 22, 1–20, <https://doi.org/10.1029/2020GC009267>,
540 2021.
- Beaumont, C., Ellis, S., and Pfiffner, A.: Dynamics of sediment subduction-accretion at convergent margins: Short-term modes, long-term deformation, and tectonic implications, *J. Geophys. Res.*, 104, 17 573–17 601, <https://doi.org/10.1029/1999JB900136>, 1999.
- Becker, T., Faccenna, C., O’Connell, R., and Giardini, D.: The development of slabs in the upper mantle: Insights from numerical and laboratory experiments, *Journal of Geophysical Research: Solid Earth*, 104, 15 207–15 226, <https://doi.org/10.1029/1999jb900140>, 1999.
- 545 Behr, W. M. and Becker, T. W.: Sediment control on subduction plate speeds, *Earth and Planetary Science Letters*, 502, 166–173, <https://doi.org/10.1016/j.epsl.2018.08.057>, 2018.
- Bellahsen, N., Faccenna, C., and Funiciello, F.: Dynamics of subduction and plate motion in laboratory experiments: Insights into the “plate tectonics” behavior of the Earth, *J. Geophys. Res.*, 110, 1–15, <https://doi.org/10.1029/2004JB002999>, 2005.
- Bercovici, D.: The generation of plate tectonics from mantle convection, *Earth Planet. Sc. Lett.*, 205, 107–121, [https://doi.org/10.1016/S0012-821X\(02\)01009-9](https://doi.org/10.1016/S0012-821X(02)01009-9), 2003.
550
- Bercovici, D. and Ricard, Y.: Plate tectonics damage and inheritance, *Nature*, 508, 513–516, <https://doi.org/10.1038/nature13072>, 2014.
- Billen, M. and Hirth, G.: Rheologic controls on slab dynamics, *Geochem., Geophys., Geosyst.*, 8, 1–24, <https://doi.org/10.1029/2007GC001597>, 2007.
- Brizzi, S., van Zelst, I., Funiciello, F., Corbi, F., and van Dinther, Y.: How sediment thickness influences subduction dynamics and seismicity,
555 *Journal of Geophysical Research: Solid Earth*, 125, 1–19, <https://doi.org/10.1029/2019JB018964>, 2020.
- Brizzi, S., Becker, T. W., Faccenna, C., Behr, W., van Zelst, I., Dal Zilio, L., and van Dinther, Y.: The role of sediment accretion and buoyancy on subduction dynamics and geometry, *Geophysical Research Letters*, 48, 1–12, <https://doi.org/10.1029/2021GL096266>, 2021.
- Buffett, B. A. and Heuret, A.: Curvature of subducted lithosphere from earthquake locations in the Wadati-Benioff zone, *Geochem. Geophys. Geosyst.*, 12, 1–13, <https://doi.org/10.1029/2011GC003570>, 2011.
- 560 Capitanio, F. and Morra, G.: The bending mechanics in a dynamic subduction system: Constraints from numerical modelling and global compilation analysis, *Tectonophysics*, 522-523, 224–234, <https://doi.org/10.1016/j.tecto.2011.12.003>, 2012.

- Capitanio, F., Stegman, D., Moresi, L., and Sharples, W.: Upper plate controls on deep subduction, trench migrations and deformations at convergent margins, *Tectonophysics*, 483, 80–92, <https://doi.org/10.1016/j.tecto.2009.08.020>, 2010.
- Chertova, M. V., Geenen, T., van den Berg, A., and Spakman, W.: Using open sidewalls for modelling self-consistent lithosphere subduction dynamics, *Solid Earth*, 3, 313–326, <https://doi.org/10.5194/se-3-313-2012>, 2012.
- 565 Cizkova, H. and Bina, C.: Effects of mantle and subduction-interface rheologies on slab stagnation and trench rollback, *Earth Planet. Sc. Lett.*, 379, 95–103, <https://doi.org/10.1016/j.epsl.2013.08.011>, 2013.
- Cizkova, H. and Bina, C.: Linked influences on slab stagnation: Interplay between lower mantle viscosity structure, phase transitions, and plate coupling, *Earth and Planetary Science Letters*, 509, 88–99, <https://doi.org/10.1016/j.epsl.2018.12.027>, 2019.
- 570 Clarke, A., Vannucchi, P., and Morgan, J.: Seamount chain–subduction zone interactions: Implications for accretionary and erosive subduction zone behavior, *Geology*, 46, 367–370, <https://doi.org/10.1130/G40063.1>, 2018.
- Clift, P. and Vannucchi, P.: Controls on tectonic accretion versus erosion in subduction zones: Implications for the origin and recycling of the continental crust, *Rev. Geophys.*, 42, 1–31, <https://doi.org/10.1029/2003RG000127>, 2004.
- Cloos, M. and Shreve, R.: Subduction-channel model of prism accretion, melange formation, sediment subduction, and subduction erosion at convergent plate margins: 1. Background and description, *PAGEOPH*, 128, 455–500, <https://doi.org/10.1007/BF00874548>, 1988.
- 575 Comte, D., Farias, M., Roecker, S., and Russo, R.: The nature of the subduction wedge in an erosive margin: Insights from the analysis of aftershocks of the 2015 Mw 8.3 Illapel earthquake beneath the Chilean Coastal Range, *Earth and Planetary Science Letters*, 520, 50–62, <https://doi.org/10.1016/j.epsl.2019.05.033>, 2019.
- Conrad, C. and Hager, B.: Effects of plate bending and fault strength at subduction zones on plate dynamics, *Journal of Geophysical Research: Solid Earth*, 104, 17 551–17 571, <https://doi.org/10.1029/1999jb900149>, 1999.
- 580 Cramer, F. and Tackley, P.: Parameters controlling dynamically self-consistent plate tectonics and single-sided subduction in global models of mantle convection, *J. Geophys. Res. Solid Earth*, 120, 3680–3706, <https://doi.org/10.1002/2014JB011664>, 2015.
- Cramer, F., Schmeling, H., Golabek, G. J., Duretz, T., Orendt, R., Buitert, S. J. H., May, D. A., Kaus, B. J., Gerya, T. V., and Tackley, P. J.: A comparison of numerical surface topography calculations in geodynamic modelling: an evaluation of the "sticky air" method, *Geophysical Journal International*, 189, 38–54, <https://doi.org/10.1111/j.1365-246X.2012.05388.x>, 2012.
- 585 Currie, C., Beaumont, C., and Huisman, R.: The fate of subducted sediments: A case for backarc intrusion and underplating, *Geology*, 35, 1111–1114, <https://doi.org/10.1130/G24098A.1>, 2007.
- Dahlen, F.: Noncohesive critical coulomb wedges: An exact solution, *Journal of Geophysical Research: Solid Earth*, 89, 10 125–10 133, <https://doi.org/10.1029/JB089iB12p10125>, 1984.
- 590 Dahlen, F., Suppe, J., and Davis, D.: Mechanics of fold-and-thrust belts and accretionary wedges: Cohesive coulomb theory, *Journal of Geophysical Research: Solid Earth*, 89, 10 087–10 101, <https://doi.org/10.1029/JB089iB12p10087>, 1984.
- Dasgupta, R. and Hirschmann, M. M.: The deep carbon cycle and melting in Earth's interior, *Earth and Planetary Science Letters*, 298, 1–13, <https://doi.org/10.1016/j.epsl.2010.06.039>, 2010.
- De Franco, R., Govers, R., and Wortel, R.: Nature of the plate contact and subduction zones diversity, *Earth and Planetary Science Letters*, 595, 271, 245–253, <https://doi.org/10.1016/j.epsl.2008.04.019>, 2008.
- Duarte, J., Schellart, W., and Cruden, A.: Three-dimensional dynamic laboratory models of subduction with an overriding plate and variable interplate rheology, *Geophysical Journal International*, 195, 47–66, <https://doi.org/10.1093/gji/ggt257>, 2013.
- Duarte, J. C., Schellart, W. P., and Cruden, A. R.: How weak is the subduction zone interface?, *Geophys. Res. Lett.*, 42, 2664–2673, <https://doi.org/10.1002/2014GL062876>, 2015.

- 600 Ducea, M. N. and Chapman, A. D.: Sub-magmatic arc underplating by trench and forearc materials in shallow subduction systems; A geologic perspective and implications, *Earth-Science Reviews*, 185, 763–779, <https://doi.org/10.1016/j.earscirev.2018.08.001>, 2018.
- Dutkiewicz, A., Müller, R., O’Callaghan, S., and Jónasson, H.: Census of seafloor sediments in the world’s ocean, *Geology*, 43, 795–798, <https://doi.org/10.1130/G36883.1>, 2015.
- Dutkiewicz, A., D.R. M., Cannon, J., Vaughan, S., and Zahirovic, S.: Sequestration and subduction of deep-sea carbonate in the global ocean since the Early Cretaceous, *Geology*, 47, 91–94, <https://doi.org/10.1130/G45424.1>, 2018.
- 605 Enns, A., Becker, T., and Schmeling, H.: The dynamics of subduction and trench migration for viscosity stratification, *Geophysical Journal International*, 160, 761–775, 2005.
- Funiciello, F., Faccenna, C., Heuret, A., Lallemand, S., Di Giuseppe, E., and Becker, T.: Trench migration, net rotation and slab-mantle coupling, *Earth and Planetary Science Letters*, 271, 233–240, <https://doi.org/10.1016/j.epsl.2008.04.006>, 2008.
- 610 Garel, F., Goes, S., Davies, D., Davies, J., Kramer, S., and Wilson, C.: Interaction of subducted slabs with the mantle transition-zone: A regime diagram from 2-D thermo-mechanical models with a mobile trench and an overriding plate, *Geochem. Geophys. Geosyst.*, 15, 1739–1765, <https://doi.org/10.1002/2014GC005257>, 2014a.
- Garel, F., Goes, S., Davies, D. R., Davies, J. H., Kramer, S. C., and Wilson, C. R.: Interaction of subducted slabs with the mantle transition-zone: A regime diagram from 2-D thermo-mechanical models with a mobile trench and an overriding plate, *Geochem. Geophys. Geosy.*, 615 15, 1739–1765, <https://doi.org/10.1002/2014gc005257>, 2014b.
- Gerardi, G., Ribe, N. M., and Tackley, P. J.: Plate bending, energetics of subduction and modeling of mantle convection: A boundary element approach, *Earth and Planetary Science Letters*, 515, 47–57, <https://doi.org/10.1016/j.epsl.2019.03.010>, 2019.
- Gerya, T.: *Introduction to Numerical Geodynamic Modelling*, Cambridge University Press, 1st edn., 2009.
- Gerya, T. and Yuen, D.: Rayleigh-Taylor instabilities from hydration and melting propel “cold plumes” at subduction zones, *Earth and Planetary Science Letters*, 212, 47–67, [https://doi.org/10.1016/S0012-821X\(03\)00265-6](https://doi.org/10.1016/S0012-821X(03)00265-6), 2003.
- 620 Gerya, T. V., Stöckhert, B., and Perchuk, A. L.: Exhumation of high-pressure metamorphic rocks in a subduction channel: A numerical simulation, *Tectonics*, 21, 1–19, <https://doi.org/10.1029/2002TC001406>, 2002.
- Gutscher, M.-A., Kukowski, N., Malavieille, J., and Lallemand, S.: Material transfer in accretionary wedges from analysis of a systematic series of analog experiments, *Journal of Structural Geology*, 20, 407–416, [https://doi.org/10.1016/S0191-8141\(97\)00096-5](https://doi.org/10.1016/S0191-8141(97)00096-5), 1998.
- 625 Harlow, F. and Welch, J.: Numerical Calculation of Time-Dependent Viscous Incompressible Flow of Fluid with Free Surface, *The Physics of Fluids*, 8, 1–8, <https://doi.org/10.1063/1.1761178>, 1965.
- Hawkesworth, C., Turner, S., McDermott, F., Peate, D., and Van Calsteren, P.: U–Th isotopes in arc magmas: implications for element transfer from the subducted crust, *Science*, 276, 551–555, <https://doi.org/10.1126/science.276.5312.551>, 1997.
- Heuret, A., Funiciello, F., Faccenna, C., and Lallemand, S.: Plate kinematics, slab shape and back-arc stress: A comparison between laboratory models and current subduction zones, *Earth and Planetary Science Letters*, 256, 473–483, <https://doi.org/10.1016/j.epsl.2007.02.004>, 630 2007.
- Heuret, A., Conrad, C. P., Funiciello, F., Lallemand, S., and Sandri, L.: Relation between subduction megathrust earthquakes, trench sediment thickness and upper plate strain, *Geophys. Res. Lett.*, 39, 1–6, <https://doi.org/10.1029/2011GL050712>, 2012.
- Hirth, G. and Kohlstedt, D. L.: Water in the oceanic upper mantle: implications for rheology, melt extraction and the evolution of the lithosphere, *Earth Planet. Sci. Lett.*, 144, 93–108, [https://doi.org/10.1016/0012-821X\(96\)00154-1](https://doi.org/10.1016/0012-821X(96)00154-1), 1996.
- 635 Holt, A., Becker, T., and Buffett, B.: Trench migration and overriding plate stress in dynamic subduction models, *Geophysical Journal International*, 201, 172–192, <https://doi.org/10.1093/gji/ggv011>, 2015.

- Husson, J. and Peters, S.: Atmospheric oxygenation driven by unsteady growth of the continental sedimentary reservoir, *Earth and Planetary Science Letters*, 460, 68–75, <https://doi.org/10.1016/j.epsl.2016.12.012>, 2017.
- 640 Kasting, J.: Long-term stability of the Earth's climate, *Glob. Planet. Change*, 75, 83–95, [https://doi.org/10.1016/0031-0182\(89\)90185-5](https://doi.org/10.1016/0031-0182(89)90185-5), 1989.
- Kaus, B., Mühlhaus, H., and May, D.: A Stabilization Algorithm for Geodynamic Numerical Simulations with a Free Surface, *Physics of the Earth and Planetary Interiors*, 181, 12–20, <https://doi.org/10.1016/j.pepi.2010.04.007>, 2010.
- Kaus, B., Popov, A., Baumann, T., Pusok, A., Bauville, A., Fernandez, N., and Collignon, M.: Forward and inverse modeling of lithospheric deformation on geological timescales, *NIC Proceedings*, 48, 299–307, 2016.
- 645 Kelemen, P. B. and Manning, C. E.: Reevaluating carbon fluxes in subduction zones, what goes down, mostly comes up, *Proceedings of the National Academy of Sciences of the United States of America*, 112, E3997–E4006, <https://doi.org/10.1073/pnas.1507889112>, 2015.
- Lallemand, S., Heuret, A., and Boutelier, D.: On the relationships between slab dip, back-arc stress, upper plate absolute motion, and crustal nature in subduction zones, *Geochem. Geophys. Geosyst.*, 6, 1–18, <https://doi.org/10.1029/2005GC000917>, 2005.
- 650 Lallemand, S. E., Schnürle, P., and Malavieille, J.: Coulomb theory applied to accretionary and nonaccretionary wedges: Possible causes for tectonic erosion and/or frontal accretion, *J. Geophys. Res.*, 99, 12 033–12 055, <https://doi.org/10.1029/94JB00124>, 1994.
- Lamb, S. and Davis, P.: Cenozoic climate change as a possible cause for the rise of the Andes, *Nature*, 425, 792–797, <https://doi.org/10.1038/nature02049>, 2003.
- Laske, G., Masters, G., Ma, Z., and Pasyanos, M.: Update on CRUST1.0 - A 1-degree Global Model of Earth's Crust, *Geophys. Res. Abstracts*, 15, <https://doi.org/2013EGUGA.15.2658L>, 2013.
- 655 Magni, V., van Hunen, J., Funiciello, F., and Faccenna, C.: Numerical models of slab migration in continental collision zones, *Solid Earth*, 3, 293–306, <https://doi.org/10.5194/se-3-293-2012>, 2012.
- Melnick, D. and Echtler, H.: Inversion of forearc basins in south-central Chile caused by rapid glacial age trench fill, *Geology*, 34, 709–712, <https://doi.org/10.1130/G22440.1>, 2006.
- 660 Menant, A., Angiboust, S., Gerya, T., Lacassin, R., Simoes, M., and Grandin, R.: Transient stripping of subducting slabs controls periodic forearc uplift, *Nat. Commun.*, 11, 1–10, <https://doi.org/10.1038/s41467-020-15580-7>, 2020.
- Merdith, A., Atkins, S., and Tetley, M.: Tectonic Controls on Carbon and Serpentinite Storage in Subducted Upper Oceanic Lithosphere for the Past 320 Ma, *Front. Earth Sci.*, 7, 1–23, <https://doi.org/10.3389/feart.2019.00332>, 2019.
- 665 Moore, J. and Saffer, D.: Updip limit of the seismogenic zone beneath the accretionary prism of southwest Japan: An effect of diagenetic to low-grade metamorphic processes and increasing effective stress, *Geology*, 29, 183–186, [https://doi.org/10.1130/0091-7613\(2001\)029<0183:ULOTSZ>2.0.CO;2](https://doi.org/10.1130/0091-7613(2001)029<0183:ULOTSZ>2.0.CO;2), 2001.
- Moresi, L. and Gurnis, M.: Constraints on the lateral strength of slabs from three-dimensional dynamic flow models, *Earth and Planetary Science Letters*, 138, 15–28, [https://doi.org/10.1016/0012-821X\(95\)00221-W](https://doi.org/10.1016/0012-821X(95)00221-W), 1996.
- Peters, S. and Husson, J.: Sediment cycling on continental and oceanic crust, *Geology*, 45, 323–326, <https://doi.org/10.1130/G38861.1>, 2017.
- 670 Petersen, R., Stegman, D., and Tackley, P.: The subduction dichotomy of strong plates and weak slabs, *Solid Earth*, 8, 339–350, <https://doi.org/10.5194/se-8-339-2017>, 2017.
- Plank, T. and Langmuir, C.: The chemical composition of subducting sediment and its consequences for the crust and mantle, *Chemical Geology*, 145, 325–394, [https://doi.org/10.1016/S0009-2541\(97\)00150-2](https://doi.org/10.1016/S0009-2541(97)00150-2), 1998.
- Plank, T. and Manning, C.: Subducting carbon, *Nature*, 574, 343–352, <https://doi.org/10.1038/s41586-019-1643-z>, 2019.

- 675 Pusok, A. and Kaus, B.: Development of topography in 3-D continental-collision models, *Geochemistry, Geophysics, Geosystems*, 16, <https://doi.org/10.1002/2015GC005732>, 2015.
- Pusok, A. and Stegman, D.: Formation and stability of same-dip double subduction systems, *J. Geophys. Res.: Solid Earth*, 124, <https://doi.org/10.1029/2018JB017027>, 2019.
- Pusok, A. and Stegman, D.: The convergence history of India-Eurasia records multiple subduction dynamics processes, *Science Advances*, 6, 1–8, <https://doi.org/10.1126/sciadv.aaz8681>, 2020.
- 680 Pusok, A., Kaus, B., and Popov, A.: On the quality of velocity interpolation schemes for marker-in-cell method and 3-D staggered grids, *Pure Appl. Geophys.*, 174, 1071–1089, <https://doi.org/10.1007/s00024-016-1431-8>, 2017.
- Quinteros, J., Sobolev, S., and Popov, A.: Viscosity in transition zone and lower mantle: Implications for slab penetration, *Geophysical Research Letters*, 37, 1–5, <https://doi.org/10.1029/2010GL043140>, 2010.
- 685 Riel, N., Capitanio, F. A., and Velic, M.: Numerical modeling of stress and topography coupling during subduction: Inferences on global vs. regional observables interpretation, *Tectonophysics*, 746, 239–250, <https://doi.org/10.1016/j.tecto.2017.07.023>, 2018.
- Rudolph, M., Lekić, V., and Lithgow-Bertelloni, C.: Viscosity jump in Earth's mid-mantle, *Science*, 350, 1349–1352, <https://doi.org/10.1126/science.aad1929>, 2015.
- Ruh, J.: Effect of fluid pressure distribution on the structural evolution of accretionary wedges, *Terra Nova*, 29, 202–210, <https://doi.org/10.1111/ter.12263>, 2017.
- 690 Sandiford, D. and Moresi, L.: Improving subduction interface implementation in dynamic numerical models, *Solid Earth*, 10, 969–985, <https://doi.org/10.5194/se-10-969-2019>, 2019.
- Schellart, W., Freeman, J., Stegman, D., Moresi, L., and May, D.: Evolution and diversity of subduction zones controlled by slab width, *Nature*, 446, 308–311, <https://doi.org/10.1038/nature05615>, 2007.
- 695 Schmeling, H., Babeyko, A. Y., Enns, A., Faccenna, C., Funicello, F., Gerya, T., Golabek, G. J., Grigull, S., Kaus, B. J. P., Morra, G., Schmalholz, S. M., and van Hunen, J.: A benchmark comparison of spontaneous subduction models: Towards a free surface, *Physics of the Earth and Planetary Interiors*, 171, 198–223, <https://doi.org/10.1016/j.pepi.2008.06.028>, 2008.
- Selzer, C., Buitter, S. J. H., and Pfiffner, O. A.: Numerical modeling of frontal and basal accretion at collisional margins, *Tectonics*, 27, 1–26, <https://doi.org/10.1029/2007TC002169>, 2008.
- 700 Shreve, R. and Cloos, M.: Dynamics of sediment subduction, melange formation, and prism accretion, *J. Geophys. Res. Solid Earth*, 91, 10 229–10 245, <https://doi.org/10.1029/JB091iB10p10229>, 1986.
- Silver, E., Ellis, M., Breen, N., and Shipley, T.: Comments on the growth of accretionary wedges, *Geology*, 13, 6–9, [https://doi.org/10.1130/0091-7613\(1985\)13<6:COTGOA>2.0.CO;2](https://doi.org/10.1130/0091-7613(1985)13<6:COTGOA>2.0.CO;2), 1985.
- Simpson, G.: Formation of accretionary prisms influenced by sediment subduction and supplied by sediments from adjacent continents, *Geology*, 38, 131–134, <https://doi.org/10.1130/G30461.1>, 2010.
- 705 Sobolev, S. and Brown, M.: Surface erosion events controlled the evolution of plate tectonics on Earth, *Nature*, 570, 52–57, <https://doi.org/10.1038/s41586-019-1258-4>, 2019.
- Straub, S., Gómez-Tuena, A., and Vannucchi, P.: Subduction erosion and arc volcanism, *Nat. Rev. Earth Environ.*, 1, 574–589, <https://doi.org/10.1038/s43017-020-0095-1>, 2020.
- 710 Straume, E. O., Gaina, C., Medvedev, S., Hochmuth, K., Gohl, K., Whittaker, J. M., Fattah, R. A., Doornenbal, J. C., and Hopper, J. R.: GlobSed: Updated total sediment thickness in the world's oceans, *Geochemistry, Geophysics, Geosystems*, 20, 1756–1772, <https://doi.org/10.1029/2018GC008115>, 2019.

- Syracuse, E., van Keken, P., and Abers, G.: The global range of subduction zone thermal models, *Phys. Earth Planet. Interiors*, 183, 73–90, <https://doi.org/10.1016/j.pepi.2010.02.004>, 2010.
- 715 Tackley, P.: Self-consistent generation of tectonic plates in time-dependent, three-dimensional mantle convection simulations, *Geochem. Geophys. Geosy.*, 1, 1–45, <https://doi.org/10.1029/2000GC000036>, 2000.
- Tian, M., Katz, R. F., Rees Jones, D. W., and May, D. A.: Devolatilization of Subducting Slabs, Part II: Volatile Fluxes and Storage, *Geochemistry, Geophysics, Geosystems*, 20, 6199–6222, <https://doi.org/10.1029/2019GC008489>, 2019.
- Turcotte, D. and Schubert, G.: *Geodynamics*, Cambridge University Press, 3rd edn., 2014.
- 720 Val, P. and Willenbring, J.: Across-strike asymmetry of the Andes orogen linked to the age and geometry of the Nazca plate, *Earth ArXiv*, (preprint), <https://doi.org/10.31223/osf.io/awug4>, 2020.
- van Keken, P. E., Hacker, B. R., Syracuse, E. M., and Abers, G. A.: Subduction factory: 4. Depth-dependent flux of H₂O from subducting slabs worldwide, *J. Geophys. Res.*, 116, 1–15, <https://doi.org/10.1029/2010JB007922>, 2011.
- van Rijsingen, E., Lallemand, S., Peyret, M., Arcay, D., Heuret, A., Funicello, F., and Corbi, F.: How subduction interface roughness influences the occurrence of large interplate earthquakes, *Geochemistry, Geophysics, Geosystems*, 19, 2342–2370, <https://doi.org/10.1029/2018GC007618>, 2018.
- 725 Vannucchi, P., Remitti, F., and Bettelli, G.: Geological record of fluid flow and seismogenesis along an erosive subducting plate boundary, *Nature*, 451, 699–703, <https://doi.org/10.1038/nature06486>, 2008.
- von Huene, R. and Scholl, D.: Observations at convergent margins concerning sediment subduction, subduction erosion, and the growth of continental crust, *Reviews of Geophysics*, 29, 279–316, <https://doi.org/10.1029/91RG00969>, 1991a.
- 730 von Huene, R. and Scholl, D. W.: Observations at convergent margins concerning sediment subduction, subduction erosion, and the growth of continental crust, *Rev. Geophys.*, 29, 279–316, <https://doi.org/10.1029/91RG00969>, 1991b.
- von Huene, R., C.R., R., and Vannucchi, P.: Generic model of subduction erosion, *Geology*, 32, 913–916, <https://doi.org/10.1130/G20563.1>, 2004.
- 735 Weiss, J. R., Ito, G., Brooks, B. A., Olive, J.-A., Moore, G. F., and Foster, J. H.: Formation of the frontal thrust zone of accretionary wedges, *Earth and Planetary Science Letters*, 495, 87–100, <https://doi.org/10.1016/j.epsl.2018.05.010>, 2018.
- Wu, B., Conrad, C., Heuret, A., Lithgow-Bertelloni, C., and Lallemand, S.: Reconciling strong slab pull and weak plate bending: The plate motion constraint on the strength of mantle slabs, *Earth and Planetary Science Letters*, 272, 412–421, <https://doi.org/10.1016/j.epsl.2008.05.009>, 2008.
- 740 Zhong, S. and Davies, G.: Effects of plate and slab viscosities on the geoid, *Earth and Planetary Science Letters*, 170, 487–496, [https://doi.org/10.1016/S0012-821X\(99\)00124-7](https://doi.org/10.1016/S0012-821X(99)00124-7), 1999.