



## Geodynamic and seismotectonic model of a long-lived transverse structure: The Schio-Vicenza Fault System (NE Italy)

Dario Zampieri<sup>1</sup>, Paola Vannoli<sup>2</sup>, Pierfrancesco Burrato<sup>2</sup>

<sup>1</sup>Dipartimento di Geoscienze, Università degli Studi di Padova, Padova, Italy

5 <sup>2</sup>Istituto Nazionale di Geofisica e Vulcanologia, Sezione Roma 1, Rome, Italy

*Correspondence to:* Pierfrancesco Burrato (pierfrancesco.burrato@ingv.it)

**Abstract.** We make a thorough review of geological and seismological data on the long-lived Schio-Vicenza Fault System (SVFS) in northern Italy and present for it a geodynamic and seismotectonic interpretation.

10 The SVFS is a major and high angle structure transverse to the mean trend of the Eastern Southern Alps fold-and-thrust belt, and the knowledge of this structure is deeply rooted in the geological literature and spans for more than a century and a half. The main fault of the SVFS is the Schio-Vicenza Fault (SVF), which has a significant imprint in the landscape across the Eastern Southern Alps and the Veneto-Friuli foreland. The SVF can be divided into a northern segment, extending into the chain north of Schio and mapped up to the Adige Valley, and a southern one, coinciding with the SVF proper. The latter segment borders to the east the Lessini, Berici Mts. and Euganei Hills block, separating this foreland structural high from the

15 Veneto-Friuli foreland, and continues southeastward beneath the recent sediments of the plain via the blind Conselve-Pomposa fault. The structures forming the SVFS have been active with different tectonic phases and different style of faulting at least since the Mesozoic, with a long-term dip-slip component of faulting well defined and, on the contrary, the horizontal component of the movement not well constrained. The SVFS interrupts the continuity of the Eastern Southern Alps thrust fronts in the Veneto sector, suggesting that it played a passive role in controlling the geometry of the active thrust belt and possibly the current distribution of seismic release. As a whole, apart from moderate seismicity along the northern segment

20 and few geological observations along the southern one, there is little evidence to constrain the recent activity of the SVFS. In this context, the SVFS, and specifically its SVF strand, has been referred to as a sinistral strike-slip boundary of the northeastern Adriatic indenter.

The review of the historical and instrumental seismicity along the SVFS shows that it does not appear to have generated large

25 earthquakes during the last few hundred years. The moderate seismicity point to a dextral strike-slip activity, which is also corroborated by the field analysis of antithetic Riedel structures of the fault cropping out along the northern segment. Conversely, the southern segment shows geological evidence of sinistral strike-slip activity. The geological and seismological apparently conflicting data can be reconciled considering the faulting style of the southern segment as driven by the indentation of the Adriatic plate, while the opposite style along the northern segment can be explained in a sinistral opening "zipper"

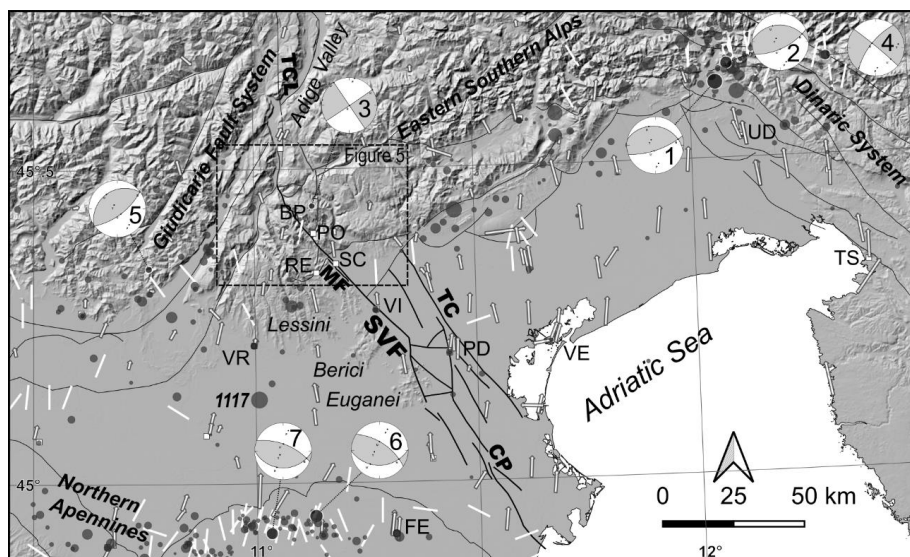
30 model, where intersecting pairs of simultaneously active faults with different sense of shear merge into a single fault system via a zippered section.



## 1 Introduction

Many foreland areas in the world display transverse structures accommodating the segmentation of the thrust fronts and the outward propagation of the fold and thrust belts. These structures are commonly pre-existing, steep normal faults penetrating the basement, and originated during previous episodes of extension at various angles to the belts, often reactivated as transpressional or transtensional shear. Given their geometry, during the chain shortening these transverse faults are reactivated as strike-slip faults, as for example in the Himalayan foreland (e.g.: Duvall et al., 2020), in the Laramide belt (e.g.: Bader, 2019), in the Southern Pyrenees foreland (e.g.: Carrillo et al., 2020), in the Southern Apennines foreland (e.g.: Argnani et al., 2009) and in the foreland of the Sicilian-Maghrebian chain (Di Bucci et al., 2006; 2010; Fedorik et al., 2018). In any case, they exert a fundamental tectonic control in basin and thrust belt evolution, but also in gas and oil migration and accumulation (e.g.: Cai and Lu, 2015). The complexity arising from segmentation of the transverse structures has been unravelled also by analogue modelling (Fedorik et al., 2019) and may produce releasing step-overs with local rising of hot waters (e.g.: Pola et al. 2014a; Torresan et al., 2020).

The Eastern Southern Alps in northern Italy, an ENE-WSW trending fold and thrust retrobelt of the Alpine chain located at the northern boundary of the Adria plate, is cut by the Schio-Vicenza Fault System (SVFS). This is a complex transverse structure with respect to the general trend of the thrust fronts, composed of a set of NW-SE trending and NE-dipping high angle faults, that lowers to the east the sedimentary succession of the northern Adria plate, and it is recognised for a total length of about 150 km from the Adige River valley to the Po River delta (Fig. 1). The main structure of this fault system is the so-called Schio-Vicenza Fault (SVF, in the oldest literature also known as Schio Line or Vicenza Line), a NW-SE, steep and very prominent strike-slip fault. Due to his imprint on the landscape between the towns of Schio and Vicenza (Fig. 1), this fault has been recognized since the beginning of the geological studies of the area, firstly by the Austrian author Schauthoth (1855). The SVF is recognised as a prominent morphological lineament that abruptly separates the Lessini, Berici Mts. and Euganei Hills block, interpreted as an “undeformed” foreland structural high (Bigi et al., 1990), from the Veneto-Friuli foreland basin (e.g. Toscani et al., 2016). The SVF has been mapped by some authors also in the mountain area north of Schio up to the Adige valley.



**Figure 1.** Seismotectonic map of northern Italy showing historical and instrumental earthquakes of  $M > 4.5$  with grey circles proportional to the magnitude from the CPTI15 (Rovida et al., 2020; 2021) and ISIDE databases (ISIDE Working Group, 2007), focal mechanisms of main events, GPS velocity field (from Devoti et al., 2017; white arrows) and SHmax orientations (from



65 IPSI database, Mariucci and Montone, 2020; white bars). Focal mechanisms (from Pondrelli et al., 2020): (1)  $M_w$  6.4, 6 May 1976 and (2)  $M_w$  6.0, 15 September 1976 Friuli earthquakes; (3)  $M_w$  4.9, 13 September 1989; (4)  $M_w$  5.6, 12 April 1998 Bovec-Krn Mt. earthquake; (5)  $M_w$  5.0, 24 November 2004; (6)  $M_w$  6.1, 20 May 2012 and (7)  $M_w$  5.9, 29 May 2012 Emilia earthquakes. Trace of the faults of the SVFS from Pola et al. (2014a) and Torresan et al. (2020). Names of the faults: CP: Conselve-Pomposa Fault; MF: Malo Fault; SVF: Schio-Vicenza Fault; TC: Travettore-Codevigo Fault; TCL: Trento-Cles Fault. Cities and geographic names: BP: Borcola Pass; FE: Ferrara; PD: Padova; PO: Posina; RE: Recoaro; SC: Schio; TS: Trieste; UD: Udine; VE: Venezia; VI: Vicenza; VR: Verona. Digital elevation model is EU-DEM v1.1. Available online: <https://land.copernicus.eu/imagery-in-situ/eu-dem> (accessed on 13 April 2021).

70 To the south-east of the Euganei Hills, the SVFS continues in the subsurface of the Veneto plain, where it is known as the Conselve-Pomposa fault (CP). Eastward, another buried segment is the Travettore-Codevigo fault (TC; Fig. 1; Pola et al., 2014b).

In the centuries after Schauroth's work only the SVF s.s. has been the subject of many scientific works, and has been cited many times and frequently used in regional tectonic models as a key feature accommodating the indentation of the northern  
 75 Adria plate margin (e.g. Semenza, 1974; Slejko et al., 1989; Castellarin et al., 2000; Zampieri et al., 2003; Heberer et al., 2017; Mantovani et al., 2020). The work of Pola et al. (2014b) defined for the first time the complex architecture of the whole SVFS. South of Schio, the SVF is the westernmost strand of a set of buried faults which lies in the subsurface of the Quaternary Veneto plain. North of Schio, near the town of Posina, the SVF joins with a set of N-trending conjugate faults.

Given its geometry and orientation, the most recent activity of the SVFS during the shortening of the Southern Alps was  
 80 dominated by strike-slip movements. However, the bedrock fault planes of the SVFS are poorly exposed in outcrop, so few kinematic indicators can be found. On the other hand, the seismic sections encountering the strands of the SVFS in the Veneto Plain say little about the strike-slip activity, while showing mainly the extensional character of the former tectonic phases (Pola et al., 2014b). Therefore, the recent kinematics of the SVFS remains unclear. Another puzzling character of the SVFS is the weak seismic activity, which would be expected given the regional role of the fault delimiting the Eastern Southern Alps active  
 85 and seismogenic thrust fronts (Zanferrari et al., 1982; Galadini et al., 2005; Burrato et al., 2008). Historical and instrumental catalogues show only a scattered distribution of low seismicity along this structure (see Chapter 4). Few instrumental data of the northern part of the area point to a dextral strike-slip activity (e.g. Pondrelli et al., 2006) and consequently, the SVF was recently included in the Italian database of seismogenic source DISS referring to such kinematics (Basili et al., 2008; DISS Working Group, 2018). In spite of this, most of the geological reconstructions refer to a sinistral strike-slip activity (see Table  
 90 1).

Our aim here is to draw the contrasting data and interpretations on the SVFS flourished in the literature spanning a century and a half. First, we briefly outline the geodynamic role, the kinematics, the age of the tectonic phase(s) and where possible, the throw and heave derived from the main papers citing the SVF s.s. or the SVFS. We then review the seismological data and finally we try to interpret all the information in a unifying model, which can reconcile apparently contrasting data.

95

ID	Year	Authors	Geodynamic role	K	Age	Throw	Horizontal offset
1	1855	Schauroth	N/A	N/A	N/A	N/A	N/A
2	1875	Suess	N/A	N/A	N/A	N/A	N/A
3	1879	Bittner	N/A	N/A	N/A	N/A	N/A
4	1882	Taramelli	N/A	N/A	N/A	N/A	N/A
5	1882	Molon	Eastern block subsidence	N	Late Tertiary	N/A	N/A
6	1901	Negri	Fault in a map	N/A	N/A	N/A	N/A
7	1906	Maddalena	N/A	1. N 2. L	N/A	N/A	N/A
8	1918	Klebensberg	N/A	1. N 2. L	N/A	700 m	N/A
9	1920	Fabiani	Fault in a map	N/A	N/A	N/A	N/A



10	1920	De Pretto	Eastern block subsidence	1. N 2. L	Late Miocene Late Miocene	N/A	2 km (Schio) 16 km (Vicenza)
11	1923	Pia	N/A	N/A	N/A	N/A	N/A
12	1963	De Boer	Accommodation of magmatism, Orogenic collapse	1. N 2. L	Early-middle Triassic (N) Early-middle Eocene (N) Middle-late Miocene (L) Early Pliocene (L)	500- ? m (South)	few kilometers (North)
13	1968	Bosellini et al.	Fault in a map	1. N 2. L	N/A	N/A	N/A
14	1968	Braga et al.	Fault in a map	1. N 2. L	N/A	N/A	2 km
15	1972	Finetti	Eastern block subsidence	N	Quaternary	320 m	N/A
16	1974	Semenza	Intraplate transfer fault	L	N/A	N/A	Several km
17	1982	Zanferrari et al.	Separation of blocks	1. N 2. L	Plio-Quaternary	N/A	N/A
18	1986	Sedeà, Di Lallo	Fault in a map	L	Neogene-Quaternary	N/A	3 km
19	1987	Dogliani, Bosellini	Dinaric peripheral bulge	N	Eocene	N/A	N/A
20	1988	Pellegrini	N/A	1. N 2. L	Triassic (N) Neogene-Quaternary (L)	500 m	N/A
21	1991	Castaldini, Panizza	Eastern block subsidence	N	Middle Pleistocene-Olocene	200 m	N/A
22	1994	Cantelli, Castellarin	Transfer fault	L	Messinian-Pleistocene	N/A	N/A
23	1996	Laubscher	W margin of clockwise rotating Tauern sublid	L	Middle-late Miocene	N/A	N/A
24	2003	Zampieri et al.	Indenter margin	L	Neogene	N/A	N/A
25	2006	Castellarin et al.	Transfer fault	L	Messinian-Present	N/A	N/A
26	2006	Massironi et al.	Indenter margin	1. N 2. R 3. L	Paleogene (N) Neogene (R, L)	N/A	N/A
27	2008	Viganò et al.	Strain partitioning within Adria indenter	R	Present	N/A	N/A
28	2009	Mantovani et al.	Indenter margin	L	Neogene	N/A	N/A
29	2012	Fondriest et al.	N/A	R	Neogene-Present	N/A	N/A
30	2014a	Pola et al.	Indenter margin	L	Neogene-Present	0 - 430m	N/A
31	2014 b	Pola et al.	1. Passive margin 2. Indenter margin	1. N 2. L	Mesozoic (N) Plio-Quaternary (L)	N/A	N/A
32	2014	Turrini et al.	Wrench-type swarm	N/A	Post-Pliocene	N/A	N/A
33	2015	Vannoli et al.	Transverse structure	R	Mesozoic Plio-Quaternary	N/A	N/A
34	2016	Heberer et al.	Indenter margin	L	Middle Miocene-Present	N/A	N/A
35	2016	Serpelloni et al.	Transfer fault	L	Late Miocene-Quaternary	N/A	N/A
36	2019	Brancolini et al.	1. Passive margin 2. Indenter margin	1. N 2. L	Mesozoic (N) Plio-Quaternary (L)	N/A	N/A

**Table 1:** Geological review of more than a century and a half of literature, and synoptic view of the main kinematic parameters of the SVF as proposed by various investigators. At least one third of the authors suggest that a change in kinematics has occurred over time. K: kinematics; N: normal; L: left-lateral; R: right-lateral; N/A: data not available.



## 2 More than a century and a half of studies

100 The SVF, being the most prominent feature south of the Alps in the Veneto plain (Fig. 1), it was drawn in all the geological and structural maps of northeast Italy at various scales. Therefore, the knowledge of the structure is deeply rooted in the geological literature and spans for more than a century and a half (Table 1). While few papers have investigated in detail the structure or part of it, the list of works citing the SVF is very long. Here we shortly examine the main papers, books and maps dealing with the SVF with the aim of presenting the evolution of its interpretation, although not giving an exhaustive list. Only  
105 recently, due to the availability of subsurface geophysical data, the analysis was extended to buried strands of the whole structure, which consequently was recognised as a complex system of faults (SVFS). As a consequence, we will use throughout this section both SVF and SVFS.

The 19<sup>th</sup> century geological school of Wien produced several sound earth scientists studying the Südtirol region, presently the Trentino-Alto Adige autonomous region of Italy. They extended the research to the conterminous Veneto region, which  
110 belonged to Italy during the Habsburg Monarchy (1804-1867) and the Austro-Hungarian Empire (1867-1918). It has been suspected that these geologists were also military officers with the purpose of knowing the border territories (Scalia, 1917). In fact, although they reported thorough publications on the stratigraphy, palaeontology and tectonics of the Italian territories lying at the southern Austrian border, their geological maps never represented the Austrian side. The first mention of the SVF appeared in the work of the Austrian author Julius Schauth (1855) on the geological setting of the Recoaro area (Eastern  
115 Southern Alps).

Eduard Suess (1875) at page 33 of his book "On the formation of the Alps" marked the discontinuity of the Tertiary formations at the foot of the southern margin of the Alps in between the towns of Schio and Vicenza, due to a structural rupture. The short citation of the SVF is contained in just a sentence, deriving from the geomorphological prominence of the feature, which has later attracted the attention of a number of geologists. Another Austrian author, Alexander Bittner (1879), suggested that the  
120 SVF does not end at Schio, a village lying at the foothills of the Pre-Alps, but was extending within the chain until at least the Borcola pass, 18 km northwestwards. Later-on in the 20<sup>th</sup> century the Italian geologists inherited the plentiful literature on the Southern Alps published in the German language. The SVF was then depicted in the geological map of Negri (1901) or referred to as a fault separating abruptly the mountain from the plain, thus with a downthrow of the eastern block (Taramelli, 1882; Molon, 1882; Maddalena, 1906). The last author mapped the SVF southeastwards till the Euganei Hills relating their magmatism to the fault, and for the first time recognized also a left-lateral strike-slip movement. The Austrian geologist von Klebelsberg (1918) dedicated his paper to the thesis of the northwestern extension of the fault until the Adige Valley, furthermore to the north than the Bittner (1879) proposal. In addition to vertical offsets of the fault, he also recognized strike-slip movements. In contrast, Fabiani (1925) in his geological map recognised the SVF northern tip near the Borcola Pass.

The paper from the Italian geologist De Pretto (1920) added an estimation of the amount of the strike-slip component, showing  
130 an important gradient of the offset from 16 km in the southeastern portion (close to Vicenza) to only 2 km close to Schio.

In his monograph on the tectonics of the Lessini Mts., the Austrian geologist Julius Pia (1923) drew an about 25 km long SVF ending at Posina, i.e. 10 km northwest of Schio. Forty years later the Dutch geologist Jelle De Boer (1963) published his doctoral thesis in the Vicentinian Pre-Alps under the supervision of van Bemmelen. He referred to the SVF fault as the Vicenza fault, a regional structure extended for over 100 km from the Adige valley till at least the Euganei Hills to the southeast. In  
135 between the towns of Schio and Vicenza, he distinguished in the footwall of the SVF another parallel fault segment named Malo Fault (MF; Fig. 1). Two components of movement were recognized: a vertical one, with a throw of ca. 500 m north of Schio, but important even in the southern part, where the fault was described as a normal fault, and a strike-slip component, which predominates in the northern sector, where the fault was described as a left-lateral wrench fault. De Boer (1963) unravelled a very complicated history of the SVF, with at least four tectogenetic phases. In the first two, the structure acted as  
140 a normal fault, accommodating vertical movements produced by the intrusion of respectively felsic magmas, during the



Scythian and Anisian, and mafic magmas during the Eocene. A switch of the dip from west to east occurred shifting from the northern sector to the southern sector. In the last two phases of activity, the SVF acted as a left-lateral strike-slip fault in the early-middle Miocene and in the early Pliocene. This kinematics has been related to differential movements of the eastern and western blocks of the fault, in conjunction with gravitational collapse of the sedimentary cover from the Recoaro horst.

145 From the De Boer work (1963) onwards the literature on the SVF is almost exclusively by the Italian authors. In the sixties the national project on geological cartography at a scale 1:100,000 was in full operation. Therefore, in the sheets 49 *Verona* (Bosellini et al., 1968) and 36 *Schio* (Braga et al., 1968), the SVF and the MF were drawn according to the previous literature. Studying the plain region between the Venice lagoon and the Euganei Hills by means of performance of new seismic lines, Finetti (1972) drew the southern portion of the SVF, as a very steep structure with a Quaternary throw of 200-320 m. The

150 lowering of the eastern block would be ongoing in the context of the subsidence of the north Adriatic region started since the Eocene.

A regional study from Semenza (1974) attributed to the SVF an important role in accommodation of differential shortening of the two sides of the Italo-Dinaric (now Adria) plate, which was divided into two parts by the structure extending from Cles (north of Trento) to the Dalmatia in the eastern coast of the Adriatic Sea. The left-lateral movement of the SVF was explained

155 by the presence in the western block of rocks deforming in a “ductile” way sandwiched between the “stiff” Adamello pluton and the Athesian platform (the Jurassic Trento platform, partly coinciding with the thick Permian volcanic district). The absence in the eastern block of such soft and rigid rocks would have permitted the northwestwards slip of the eastern side of the SVF.

In the late seventies to early eighties the SVF was investigated in the context of the “C.N.R. Finalized Project Geodynamics - Subproject Neotectonics” (Barbieri et al., 1981; Zanferrari et al., 1982). The work of Zanferrari et al. (1982) concerning the neotectonic evolution of north-eastern Italy, investigated five paleogeographic reconstructions of eight units, from early Pliocene to the Present. For the plain area unit, corresponding to the foreland basin of both the Dinarides and the Eastern Southern Alps, the activity of NW-SE faults bounding sub-basins has been considered. The SVF is traced for more than 100

160 km from the Adige valley to the Po river and represents the longest fault. In the early Pliocene the SVF was separating the stable continental area of the Lessini Mts. from a gulf with marine sedimentation. In the late Pliocene the eastern block was rising and the marine environment became a continental area. In this period, a left-lateral strike-slip component of the fault movement started. In the early Pleistocene the sea re-entered into the gulf and the fault was active as a consequence of the differential uplift of the Lessini Mts. area and the Veneto plain. Left-lateral strike-slip movements are also detected. In the mid-late Pleistocene, the SVF was again active separating the uplifting Lessini Mts. area from the subsiding plain. Finally,

170 Zanferrari et al. (1982) recognized that in the final Pleistocene to Holocene the SVF accommodated only differential vertical movements of the Lessini Mts. with respect to the subsiding plain.

The explanation text of the geological map at a scale 1:10,000 of the Pasubio-Posina-Laghi area from Sedeà and Di Lallo (1986) recognizes a Neogene to Quaternary sinistral strike-slip activity of the SVF, with a minimum offset of 3 km.

An Eocene (Lutetian) origin of the SVF was proposed by Doglioni and Bosellini (1987). In two sketches, the fault was

175 represented as a normal fault of a set of ENE dipping faults developed in the eastern margin of the forebulge of the WSW verging Dinaric fold-and-thrust belt.

The title of a paper from Pellegrini (1988) relies directly on the morphological and neotectonics evidence of the SVF. On the basis of fluvial terraces nesting and stream deviation close to Schio, the author argues that the eastern block of the fault (the plain in between Schio and Vicenza) was lowered during the Quaternary.

180 The research for the C.N.R. Finalized Project Geodynamics - Subproject Neotectonics led Castaldini and Panizza (1991) to propose an inventory of active faults in between the Po and Piave rivers, where the SVF was classified as “active” within the class “II degree of activity”, i.e. with an average slip rate ranging from 0.1 to 1 mm/year, corresponding to a relative lowering of the eastern block in the plain sector. The strike-slip component of the mountainous sector remained controversial. The only



185 portion of this very long structure showing features corresponding to a “I degree of activity” (average slip rate ranging from 1 to 10 mm/year) was referred to as the Malo fault (MF in Fig. 1), a ca. 15 km-long synthetic segment outcropping between Schio and Vicenza.

Cantelli and Castellarin (1994) have interpreted the SVF as a sinistral transfer fault separating the central Southern Alps, which compressional deformation stopped during the Tortonian, from the Eastern Southern Alps, which deformation is still active. An interesting although complicated model has been proposed by Laubscher (1996), who rejects the model of the northern  
190 Adria indentation against the Eastern Alps (e.g. Ratschbacher et al., 1991). The SVF is interpreted as a boundary of the Veneto foreland, delimiting the structural high called “Adige embayment” (the Lessini Mts. block), separating the Central from the Eastern Southern Alps, which is defined kinematically “irksome”. These authors envisaged a SVF with a sinistral strike-slip faulting style, separating to the west the clockwise rotating Tauern sublid (the crust below the brittle-ductile transition) during the Jura phase (middle-late Miocene). These transcurrent and rotational movements were interpreted to be induced by the NW-  
195 SE Adria-Europe convergence along with deep-seated anticlockwise rotation of Adria.

The analysis of the Neogene linkage of a set of sinistral strike-slip, N-S inherited Permian to Cretaceous extensional faults conjugate with the SVF has been performed by Zampieri et al. (2003). In this study, the strike-slip kinematics of the SVF north of Posina, where the junction with a set of linked inherited fault occurs, was recognized to have been both dextral (in the Paleogene) and sinistral (in the Neogene), according to the development of a lens-shaped pop-up. This contractional feature  
200 has been related to the dextral bend of a sinistral SVF northwards linking with the N-S Trento-Cles fault (TCL in Fig. 1), already suggested by Semenza (1974).

Within the neo-Alpine evolution of the Southern Eastern Alps, Castellarin and Cantelli (2000) interpreted the Schio-Vicenza structural system as a sinistral transfer fault system between the Giudicarie belt (inner part of the chain) and the Pedemontana (frontal structure). This contractional deformation (Adriatic compressional event with shortening axis trending WNW-ESE),  
205 would be younger than the Serravallian-Tortonian Valsugana event (shortening axis NNW-SSE) and considered mainly Messinian-Pliocene in age.

An extensive regional examination of the SVF by means of structural, geochronological and seismotectonic data has been performed by Massironi et al. (2006). The post-Oligocene kinematic linkage of inherited Permian to Mesozoic structures at the western boundary of the north Adriatic indenter would have originated a sinistral strike-slip mega shear zone, of which the  
210 SVF is a key element.

The computation of the stress and strain from relocated seismic events in the Giudicarie and Lessini Mts. regions of the Southern Alps permitted Viganò et al. (2008) to define the right-lateral strike-slip activity of the NW-trending faults (parallel to the SVFS). It is worth mentioning that the analyzed events of the Lessini Mts. fall in the northern sector of the SW block of the SVF (i.e. footwall block; Lessini Mts.), where the shortening axis is ca. N-S, while in the NE block (Eastern Southern Alps  
215 foreland) the shortening axis is NNW-trending. Moreover, in a subsequent paper (Viganò et al., 2015), which include the crustal rheology analysis, the location of the seismicity in the northern part of the Lessini Mts. has been related to the Verona-Vicenza gravity high anomaly (intrusive and effusive volcanic rocks), which contribute to a stronger lithosphere.

By contrast, the Neogene to Present sinistral strike-slip faulting style of the SVF has been attributed once again to its role of western rail of the north Adriatic indenter by Mantovani et al. (2009).

220 An outcrop of an exhumed ca N-S trending sub-vertical strike-slip fault in the damage zone of the SVF close to the Borcola Pass (7 Km north of Posina) has been studied by Fondriest et al. (2012). This conjugate fault cuts the dolostones of Upper Triassic age and the macroscopic and microscopic analysis of secondary fracture patterns suggests a sinistral shear sense. This conclusion suggests that in this area the s.s. SVF is dextral.

Close to Padova the Euganean hydrothermal system, one of the most important water-dominated low-temperature geothermal  
225 systems in Europe (Fabbri et al., 2017), presents the outflow of the hot waters in correspondence of the SVFS, suggesting a structural control. A multidisciplinary study including the analysis of the fracture pattern of a travertine mound, relict of the

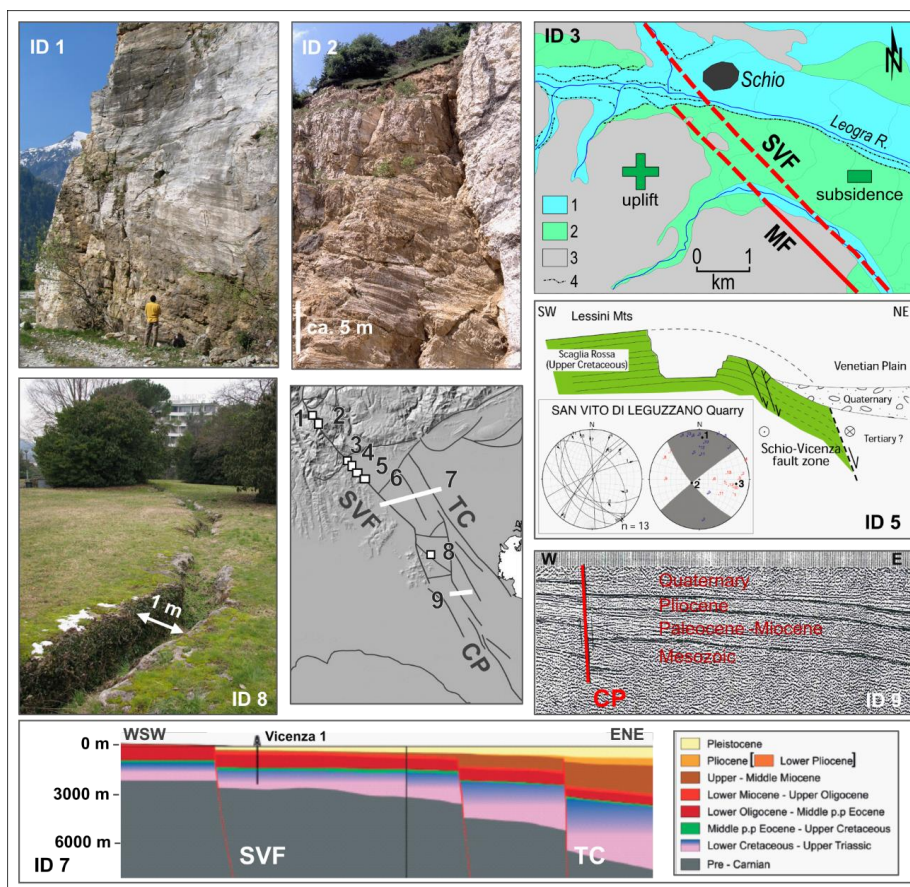


main outflow which was active until the middle of the 20<sup>th</sup> century, before a large exploitation for tourism purposes, has permitted to infer in the subsurface the existence of an extensional relay zone linking two main fault segments of the SVFS (Fig. 1; Pola et al., 2014a, 2015). The architecture of the western margin of the North Adriatic foreland has been investigated by Pola et al. (2014b) by means of some seismic lines. This margin is characterized by a set of mainly blind structures belonging to the SVFS. While the vertical component of the offsets is very clear on the seismic lines, pointing to a Mesozoic extensional deformation of the eastern border of the Trento platform, the Neogene to Present strike-slip component remains puzzling. The structural model of the Euganean geothermal system has been refined by Torresan et al. (2020) by means of a numerical 3D reconstruction of the subsurface structure. In this work for the first time the deep part of the faults of the SVFS is shown. A 3D structural model of the Po valley performed by Turrini et al. (2014) shows clearly in several figures the presence of the SVFS, which is simply referred to as a wrench-type swarm. In the context of the seismotectonics of the Po Plain, Vannoli et al. (2015) have subdivided the seismogenic sources in four groups of mainly blind faults. The SVF was included in the “Transverse structures” group, a set of faults roughly perpendicular to the chains bordering the Po Plain (Northern Apennines and Southern Alps). These structures would be the brittle response of the upper lithosphere to the lateral changes in the geometry of the Adriatic subducting slab, being characterized by relatively deep earthquakes. These investigators proposed that a fault segment belonging to the northern portion of the SVFS could be the source of the 13 September 1989 earthquake ( $M_w$  4.9, depth 40 km, dextral strike-slip faulting; ID 3 in Fig. 1). Accordingly, in the national Database of Individual Seismogenic Sources 3.2.0 version (DISS Working Group, 2018) this NW-trending fault has been classified as dextral. Serpelloni et al. (2016) using a kinematic modeling of geodetic data, calculated the recent slip rate of the SVF, distinguished in a southern sector bordering the Veneto foreland and characterised by a left-lateral slip-rate of  $0.4 \pm 0.2$  mm/yr, and a northern one with a right-lateral a slip-rate of  $1.0 \pm 0.1$  mm/yr. Finally, the role of the SVF as sinistral strike-slip western rail of the northern Adriatic indenter has been recognized also by Heberer et al. (2017), starting from the latest Mid-Miocene, and by Brancolini et al. (2019), after the Early Pliocene.

### 250 3 Geological evidence

In this section we present selected geological and geophysical features along the SVFS (Fig. 2). North of Schio, in the chain sector, the SVF does not outcrop anywhere, but geomorphic features such as straight valleys and saddles are aligned along the NW direction. At the Borcola Pass, two inactive quarries have produced the exposure of vertical fault planes trending ca N-S, with prominent strike-slip striations (IDs 1 and 2; Fig. 2; Table 2). These faults belong to the damage zone of the SVF, which is 2-3 km wide (Fondriest et al., 2012) and are interpreted as antithetic Riedel shear fractures (Zampieri et al., 2003). Since their kinematic indicators are sinistral, in this section the SVF is inferred to be dextral.





**Figure 2.** Field geological and seismic evidence of the SVFS (see Table 2 for details, and central inset for locations). ID 1: vertical fault plane with strike-slip lineations (Borcoletta quarry); ID 2: vertical fault plane with strike-slip lineations (Borcola quarry); ID 3: displaced river terraces (redrawn from Pellegrini, 1988); Symbols: 1, Holocene deposits, 2, Pleistocene deposits, 3, pre-Quaternary bedrock, 4, fluvial scarps; ID 5: cross section showing a drag fold deforming the Upper Cretaceous Scaglia Rossa formation, where the mesofault inversion suggests that the last activity was sinistral strike-slip with a kinematic shortening axis oriented nearly east-west (adapted from Zampieri et al., 2009); ID 7: interpreted seismic lines orthogonal to the SVFS (adapted from Pola et al., 2014b); ID 8: Abano Terme, main fracture of the Montirone travertine mound (Pola et al., 2014a); ID 9: seismic line orthogonal to the CP fault (adapted from Finetti, 1972). The IDs 4 and 6 can be found in the sheets 36 *Schio* (Braga et al., 1968) and 49 *Verona* (Bosellini et al., 1968) of the 1: 100,000 scale Geological Map of Italy. See also Table 2. Names of faults as in Figure 1. Digital elevation model of central map is EU-DEM v1.1. Available online: <https://land.copernicus.eu/imagery-in-situ/eu-dem> (accessed on 13 April 2021).

ID	Locality	Type	Fault	Age	K	Reference(s)
1	Borcoletta quarry	- Geological sections - Inversion of fault-slip data	RSVF	Neogene	L	Zampieri et al., 2003 Fondriest et al., 2012
2	Passo Borcola quarry	Inversion of fault-slip data	RSVF	Neogene	L	Zampieri et al., 2003 Fondriest et al., 2012
3	Torrente Leogra	Displaced alluvial terraces	SVF	Pleistocene	N	Zanferrari et al., 1982 Pellegrini, 1988
4	Magrè	Geological structure	MF	Neogene (Post-Upper Oligocene)	N	Braga et al., 1968 Zanferrari et al., 1982
5	San Vito di Leguzzano	- Geological structure (drag fold) - Inversion of fault-slip data	SVF	Post-Cretaceous	1. N 2. L	Zanferrari et al., 1982 Zampieri et al., 2009
6	Isola Vicentina	Geological structure (drag fold)	SVF	Neogene (Post-Aquitanian)	N	Bosellini et al., 1968 Zanferrari et al., 1982



7	Vicenza	Seismic section	SVF	Pleistocene	N	Pola et al., 2014b
8	Abano Terme	Fractures of a travertine mound	SVF	< 20 Ky	L	Pola et al., 2014a
9	Conselve	Seismic section	CPF	Pliocene	N	Finetti, 1972 Pola et al., 2014b

270 **Table 2:** Field geological evidence and seismic data of the SVFS as reported in literature. The IDs 1 and 2 are located north of the Posina Triple Junction and are antithetic Riedel structures respect to the SVF, while the other IDs are to the south. SVF: Schio-Vicenza Fault; RSVF: Antithetic Riedel of the SVF; MF: Malo Fault; CPF: Conselve-Pomposa Fault. Column labelled with K refers to the kinematic interpretation: N, normal fault; L, left-lateral; R, right-lateral.

275 The analysis of the longitudinal profiles of the fluvial terraces close to Schio shows Pleistocene differential uplift across the fault system, with the western block (footwall) of the SVF uplifted with respect to the plain (ID 3; Fig. 2 and Table 2; Pellegrini, 1988). To the southeast of the intersection with the frontal thrust of the Eastern Southern Alps, from Schio to Vicenza, the SVF has a prominent surficial expression, since it marks the transition from the eastern border of the Lessini Mts. block to the foreland basin plain, which is lowered. In between the SVF and the parallel Malo fault (MF), Miocene sediments dip towards  
280 the NE, while in some sectors the extensional displacement of the SVF is testified by the presence of a drag fold in the footwall (ID 4 in Table 2; for location see Fig. 2). Some seismic sections crossing at high angle the SVFS in the plain between Vicenza and Adria (Finetti, 1972; Pola et al., 2014b), two of which we present in Fig. 2 (IDs 6 and 8), highlight the extensional displacement. The total throw of the different sub parallel segments of the SVFS south of Schio is the cumulative expression of the deformation, started from the Mesozoic time in an extensional stress field close to the eastern margin of the Trento  
285 platform, and continues to this day in a contractional stress field connected to the flexuring of the foreland (Zanferrari et al., 1982; Pola et al., 2014b).

Obviously, the strike-slip component of the SVF cannot be pointed out by seismic sections but is registered by the analysis of few mesofaults presented in Fig. 2 and extracted from the offset of the sedimentary and volcanic formations in geological maps. In the southern section of the SVF, close to the Euganei Hills, a buried relay ramp, kinematically linking the SVF and  
290 the CP, has been inferred from the analysis of stratigraphic logs, of gravimetric maps and of the fracture pattern of travertine deposits (Pola et al., 2014a, 2015). The travertine mound was built by thermal hot water springs, active until the intense exploitation of the second half of the 20th century (Fabbri et al. 2017). Conceptual and numerical modelling of the Euganean geothermal system have corroborated the impact of the structural process driving a local increase in convection and the rising of thermal waters (Pola et al., 2020).

#### 295 4 Seismotectonic evidence

Historical and instrumental seismicity in the NE Italy is distributed along the Giudicarie Fault System, the Eastern Southern Alps fronts and the Northern Apennines fronts (e.g. Rovida et al., 2021). The Eastern Southern Alps thrust fronts are bordered to the east by the dextral strike-slip faults of the Dinaric system (Fig. 1), that hosts the seismogenic sources of a number of strong and moderate events that struck the area both in historical and instrumental times, like the 1511 Friuli-Slovenia,  $M_w$  6.3  
300 and the 1998 Bovec-Krn Mt.,  $M_w$  5.6, earthquakes (the latter, ID 4 in Fig. 1; Kastelic et al., 2013; DISS Working Group, 2018). Several destructive earthquakes hit Northern Italy in historical and recent times, and the strongest instrumental earthquakes occurred in Friuli during the 1976 sequence (having a maximum magnitude of 6.4) and in Emilia during the 2012 sequence (having a maximum magnitude of 6.1). The causative faults of the 1976 Friuli sequence are S-verging blind thrust of the Eastern Southern Alps (IDs 1 and 2 in Fig. 1; e.g. Burrato et al., 2008) while the causative sources of the 2012 Emilia sequence  
305 are the most advanced and buried fronts of the Northern Apennines (IDs 6 and 7 in Fig. 1; e.g. Burrato et al., 2012). Both these destructive sequences are characterized by multiple similarly large mainshocks and relatively shallow earthquakes (Vannoli et al., 2015).



310 The buried outer arc of the Central Southern Alps is connected to the east with the NNE-trending Giudicarie system, commonly interpreted as a regional transfer zone between the Central and Eastern Southern Alps (e.g. Castellarin and Cantelli, 2000), and thought to be responsible for the 24 November 2004,  $M_w$  5.0, earthquake (ID 5 in Fig. 1; Pessina et al., 2006) and the 30 October 1901,  $M_w$  5.4, event (Vannoli et al., 2015; DISS Working Group, 2018). The Giudicarie System developed along the border between the Lombardian basin to the west, and the Trento platform to the east.

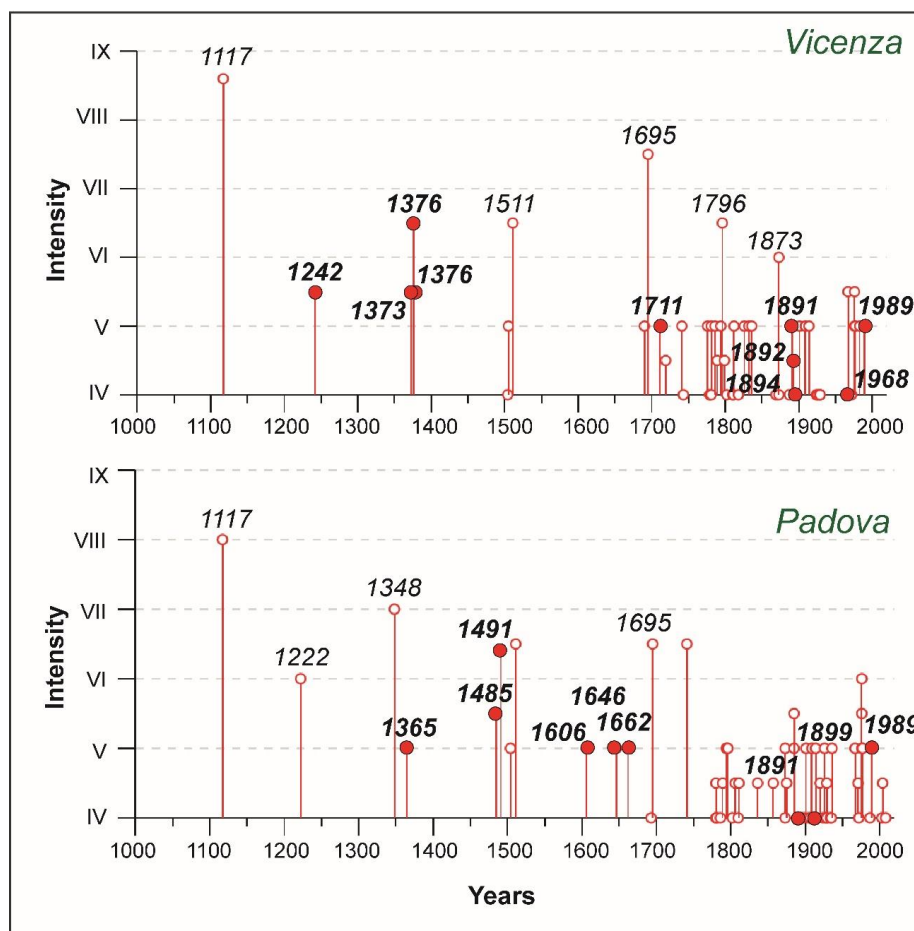
315 The instrumental earthquakes of northern Italy and Slovenia show prevailing compressional focal mechanisms, confirming that the compression is active and is accommodated by thrust and strike-slip faulting, in agreement with geologic (e.g. active anticlines) and instrumental active strain (GPS) evidence (e.g. Devoti et al., 2017; Anderlini et al., 2020; Fig. 1).

320 The largest known Po Plain earthquake, the 3 January 1117,  $M_w$  6.7, earthquake (labelled with the year of occurrence in Fig. 1; Guidoboni et al., 2018; Rovida et al., 2021), occurred on an elusive fault, south of Verona, cutting through the shortened foreland of both the Southern Alps and the Northern Apennines. As a matter of fact, the 1117 event hit a portion of the Po Plain to the south of the Lessini Mts. generally considered undeformed and far from the outermost thrust fronts of the two chains.

325 Besides the relatively well-known shallow thrust sources of the Southern Alps and Northern Apennines, the basement rocks of the Po Plain are cut by deeper inherited faults, that formed during the Mesozoic extensional phases preceding the inception of the Africa-Eurasia relative convergence (e.g. Scardia et al., 2015). As testified by the 1117 and the 13 January 1909,  $M_w$  5.4, events, significant earthquakes may be generated by this set of elusive, inherited structures, that are reactivated in the present-day tectonic compressional regime as reverse or strike-slip faults (Vannoli et al., 2015). In particular, the 1909 earthquake had a macroseismic epicenter located south of Ferrara and affected a very large area with slight to moderate damages (Rovida et al., 2021). This macroseismic scenario was interpreted as caused by the significant depth of the event (Meloni and Molin, 1987; Faccioli, 2013; Vannoli et al., 2015), and, as suggested by Sbarra et al. (2019), it may have occurred well below the basal detachment of the Northern Apennines outer fronts at a depth of 41 km, with a recalculated  $M_w$  of 6.2.

330 According to these interpretations, as a consequence of the paleogeographic and structural inheritance, long-lived faults hosted in the basement rocks, that probably bounded the Mesozoic rift systems, are reactivated in the current stress regime, and are the sources of the most dangerous earthquakes of the Po Plain and surrounding areas, having magnitude comparable or larger to those associated with the active thrusts.

335 According to the historical seismic catalogues (Guidoboni et al., 2018, 2019; Rovida et al., 2021), during the last millennium the SVFS did not generate earthquakes larger than magnitude 5.0. As a matter of fact, the cities of Vicenza and Padova, which are located very close to the SVFS (Fig. 1), have a long and well documented seismic history, and have rarely experienced damage due to large earthquakes. Both the ancient chroniclers and the Benedictine monks of the various monasteries in the area have documented the occurrence of seismic events over the centuries and provided detailed descriptions of the earthquake effects on the cities and the environment. The great Italian tradition and expertise in historical seismology made possible an interpretation of this wealth of data and a reliable quantitative processing of qualitative historical data (see Guidoboni et al., 340 2018, 2019; Tarabusi et al., 2020 and references therein). Vicenza and Padova have “seismic histories”, i.e. list of effects in terms of macroseismic intensities that affected the two localities, with well-distributed observations over the last millennium, both starting with the 1117 earthquake. The two cities have rarely experienced intensities higher than the VI degree (Rovida et al., 2020, 2021; Fig. 3).



345

**Figure 3.** Maximum macroseismic intensities recorded in the cities of Vicenza (top) and Padova (bottom) from the year 1000 to today (Rovida et al., 2021). The local earthquakes are labeled in bold and highlighted with a red pattern (see text for detail). The SVFS is the only known active fault system in the area, and for this reason we suggest that presumably have caused these local earthquakes.

350 The known earthquakes responsible for the most serious damage in the study area were the 1117,  $M_w$  6.5, *Veronese*, the 1348,  $M_w$  6.6, *Alpi Giulie*, and the 1695  $M_w$  6.4, *Asolano* events (Fig. 3); their causative faults are far from the SVFS, and not belong to it. However, numerous historical earthquakes were felt exclusively in Vicenza or Padova, and most likely were generated by local sources, potentially belonging to the SVFS (Fig. 4a). These low-magnitude historical earthquakes, listed and marked with an “X” in the last column of the Table 3 and labeled in bold in Fig. 3, were very often only strongly felt (corresponding to the degree V of the MCS scale). These local events hit the city of Vicenza between the XIII and XIV centuries and the city of Padova between the XV and XVII centuries. This may be evidence that the seismicity migrated from north (Vicenza) to south (Padova) along the SVFS over the course of those five centuries.

355

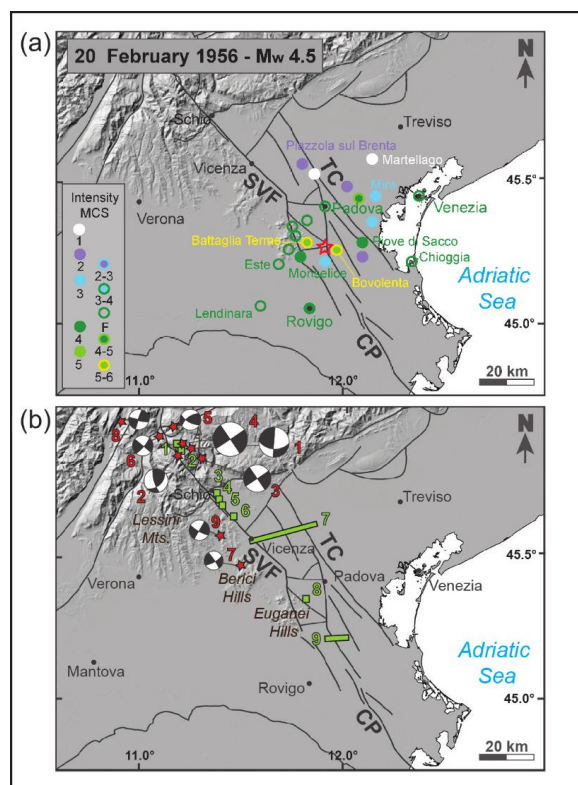


ID	Date	Locality	Intensity	N	M <sub>w</sub>	SVFS
1	24 Oct 1242	Vicenza	V-VI	1	4.4	X
2	04 Mar 1365	Pianura Veneta	V	4	4.6	X
3	Jan 1373	Vicenza	V-VI	1	4.4	X
4	Apr 1373	Vicenza	V-VI	1	4.4	X
5	12 Mar 1376	Vicenza	VI-VII	1	4.9	X
6	15 Mar 1376	Vicenza	V-VI	1	4.4	X
7	1 Sep 1485	Pianura Padano-Veneta	V	4	4.2	-
8	24 Jan 1491	Padova	VI-VII	1	4.9	X
9	12 Dec 1606	Padova	V	1	4.2	X
10	22 Feb 1646	Padova	V	1	4.2	X
11	29 Dec 1662	Padova	V	1	4.2	X
12	21 May 1711	Vicentino	IV	2	3.7	X
13	07 Jun 1891	Valle d'Illasi	VIII-IX	403	5.9	-
14	09 Aug 1892	Valle d'Alpone	VI-VII	160	4.9	-
15	09 Feb 1894	Valle d'Illasi	VI	116	4.7	-
16	27 Jan 1897	Prealpi Vicentine	IV-V	16	4.1	X
17	30 Oct 1899	Prealpi Vicentine	V	8	4.3	X
18	20 Feb 1956	Padovano	V-VI	23	4.5	X

**360 Table 3:** Pre-WWSSN (World-Wide Standardized Seismograph Network) earthquakes that are located in the SVFS area and were felt in the cities of Vicenza and Padova from the year 1000 to the present day (from CPTI15 catalogue, Rovida et al., 2021, 2020). The earthquakes included in this table are labelled in bold in Fig. 3. The table shows their macroseismic intensities, total number of available macroseismic data points (N), and moment magnitude (M<sub>w</sub>). Historical earthquakes whose



365 causative faults could presumably be the SVFS are shown with a “X” in the last column; a dash in this column indicates that no association has been made. The 1117 earthquake that is associated with the highest MCS intensity in Padova and Vicenza is not included in this table because its epicenter is located far away from the SVFS.



370 **Figure 4.** (a) Macroseismic dataset of the 20 February 1956,  $M_w$  4.5, earthquake with intensities shown in MCS scale. The selected reference macroseismic study for this event in the CPTI15 catalogue (Rovida et al., 2021), is the work by Caracciolo et al. (2009). The instrumental epicenter is shown with a red star, coincides with the macroseismic one, and falls near the SVFS. Due to its location, one of the mapped faults belonging to the SVFS may be the source of this earthquake (see text and Table 3). (b) Map showing the largest instrumental earthquakes of the study area with red stars (see Table 4). Focal mechanisms from EMMA Database and other sources (Vannucci and Gasperini, 2004; Slejko and Rebez, 1988; Slejko et al., 1989; Pondrelli et al., 2006; Viganò et al., 2008). Earthquake relocations from Viganò et al., 2015. The locations of the geological evidence are shown in green (see Table 2, Fig. 2, and text for details). These focal mechanisms are compatible with a right-lateral strike-slip reactivation of the faults belonging to the SVFS. Digital elevation model is EU-DEM v1.1. Available online: <https://land.copernicus.eu/imagery-in-situ/eu-dem> (accessed on 13 April 2021).

380 Instrumental catalogues show that the SVFS area is affected by low seismic moment release, with most of the events located in its northern mountainous portion, north of Schio (Fig. 4b and Table 4), and have hypocentral depths ranging between 2 and 19 km (Viganò et al., 2008; Moratto et al., 2017). Their moment magnitude ranges between 3.3 and 4.9. The 13 September 1989,  $M_w$  4.9, earthquake (ID 4 in Table 4 and Fig. 4b) is the largest instrumental event that affected the study area in instrumental times. The macroseismic effects of this event are documented by 779 intensity points spread over a wide area covering the Southern Alps and the Po and Veneto plains (Rovida et al., 2021). The epicentral intensity of the 1989 shock is 385 VI-VII MCS, and the area of greatest damage lies in the Giudicarie-Lessini region, north of the locality of Posina. The focal mechanism of the 1989 event is strike-slip (Eva and Pastore, 1993; Pondrelli et al., 2006; Viganò et al., 2008), and the direction of its maximum horizontal compressive stress is compatible with right-lateral strike-slip activation of a NW-SE trending fault belonging to the northern portion of the SVFS (Viganò et al., 2008; Vannoli et al., 2015; Restivo et al., 2016).



390 All available focal mechanisms of the study area consistently show right-lateral strike-slip over the northern portion of the SVFS (Table 4 and Fig. 4b; Vannucci and Gasperini, 2004; Viganò et al., 2008).

ID	Date	Time <i>hh:mm:ss</i>	Lat <i>deg</i>	Lon <i>deg</i>	Depth <i>km</i>	M <sub>w</sub>	Strike <i>deg</i>	Dip <i>deg</i>	Rake <i>deg</i>	FM Ref
1	22 Jun 1968	12:21:37	45.880	11.280	9	4.7	94;3.5	41;90	0;131	Sle89
2	22 Jun 1968	12:27:49	45.840	11.210	19	4.1	48;164	40;70	148;55	Sle89
3	21 Jul 1983	13:31:22	45.846	11.324	12	4.3	252;82	50;40	84;98	SR88
4	13 Sep 1989	21:54:02	45.882	11.264	9	4.9	146;56	90;89	-179;0	Pon06
5*	24 Oct 1994	23:22:48	45.938	11.188	8	3.5**	120;233	60;56	140;37	Vig08
6*	26 Apr 1999	02:53:46	45.916	11.096	2	3.4**	40;310	75;90	0;165	Vig08
7*	28 Oct 1999	10:16:14	45.453	11.451	8	3.3**	60;327	70;81	10;160	Vig08
8*	16 Jun 2000	11:57:22	45.989	10.927	5	3.4**	105;198	75;80	170;15	Vig08
9*	18 May 2005	21:41:09	45.569	11.385	4	3.4**	30;120	90;75	-15;-180	Vig08

395 **Table 4:** Post-WWSSN (World-Wide Standardized Seismograph Network) located near the trace of the SVFS and for which were calculated focal mechanisms. FM Ref, reference for the focal mechanisms: Slejko and Rebez, 1988 (SR88); Slejko et al., 1989 (Sle89); Pondrelli et al., 2006 (Pon06); Viganò et al., 2008 (Vig08). Key to symbols: \*earthquakes relocated by Viganò et al., 2015; \*\*M<sub>d</sub>.

## 5 Discussion

400 The SVFS has been active with different tectonic phases and different kinematics at least from the Mesozoic (Table 1). Its most prominent segment, the SVF s.s., is an inherited and well-developed morphotectonic element with a significant imprint in the landscape, reactivated in the current stress regime as testified by the moderate seismicity along its northern portion (Table 4), and the travertine recent deposits in its central section (ID 8 in Fig. 2 and Table 2; Pola et al., 2014a). Further possible evidence of the activity and of the seismogenic potential of the SVFS, come from the historical seismicity registered near Padova and Vicenza (Figs. 3 and 4a; Table 3).

405 Looking at the geological and geophysical evidence south of Posina (IDs 3 to 9 of Fig. 2 and Table 2) some consistent conclusions may be drawn about the geodynamic role, the recent activity and style of faulting of the SVFS. Pleistocene differential vertical movements across the fault system occurred close to Schio, as shown by the differential uplift of the western block (footwall) of the SVF with respect to the plain (Pellegrini, 1988; ID 3). Accordingly, in the early Pliocene marine conditions were present in the eastern block of the fault, while continental conditions characterised the western block (Zanferrari et al. 1982). The same evidence is shown by the attitude of Miocene sediments along the northern part of the SVF between Schio and Vicenza, where the deposits dip 50° towards northeast, being the limb of a drag fold in the footwall of an extensional fault (IDs 4 to 6). The same structure is recognizable in some seismic sections sub-orthogonal to the SVF (Pola et al., 2014b; ID 7).

415 Therefore, several lines of evidence testify the extensional component of the fault, especially south of Schio, while the strike-slip component is not well constrained. However, geodynamic considerations point to a role of the SVFS complementary to the NW Dinaric system (e.g. Predjama, Idrija and Ravne faults), acting presently as dextral strike-slip faults and accommodating to the east the indentation of Adria against the Alpine chain (e.g. Moulin et al., 2016; Heberer et al., 2017). If so, the SVFS, having the same NW-SE strike of the Dinaric system, but delimiting the Adria indenter to the west, on the whole



should have a sinistral component of motion. This is what was commonly suggested by a number of scholars studying the geology of the northeastern part of Italy (Table 1).

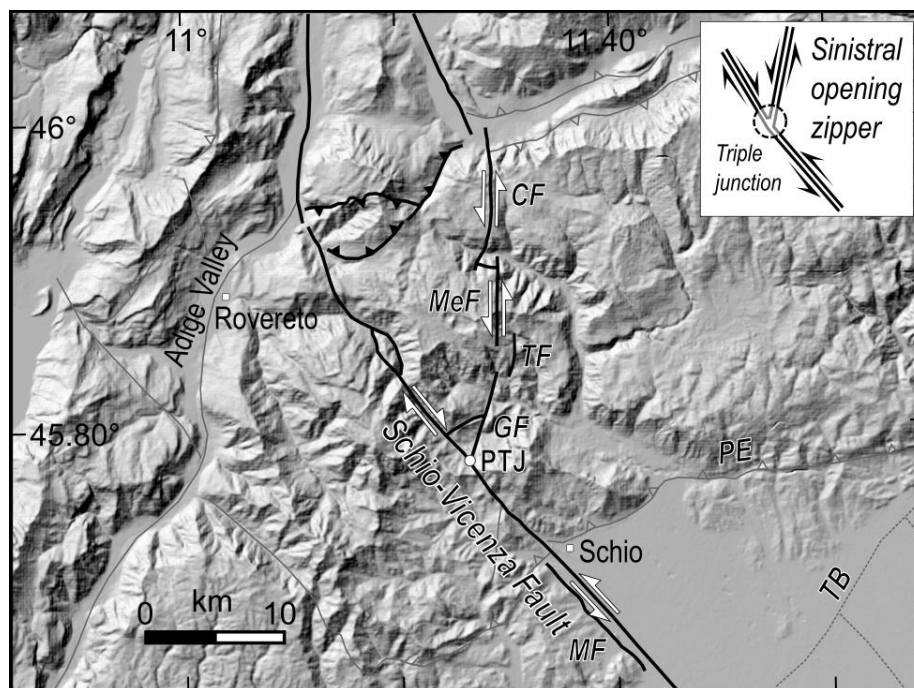
However, the few instrumental seismological data recorded near the SVF northwesternmost part (north of Posina), point to a dextral strike-slip activity (Pondrelli et al., 2006, 2020; Viganò et al., 2008, 2015). In addition, the northwestern part of the SVF, close to the Borcola Pass, subvertical conjugate fault planes crop out in two quarries exploiting Upper Triassic dolomitic marbles, and show sub-horizontal mega-corrugations produced by nearly pure sinistral strike-slip movements (IDs 1 and 2 of Fig. 2 and Table 2). The analysis of one of such conjugate sinistral N-S faults has permitted to infer a dextral kinematics for the SVF (Fondriest et al., 2012). Therefore, this review of published papers presents a prominent problem about interpretation of the recent strike-slip sense of motion of the SVF, which is described as sinistral (in most cases), but also as dextral (Tables 1 and 2). A model to solve the apparently conflicting data must be found considering the complexity and the 3D structure of the SVFS, which is more than a straight line as usually drawn in the structural maps.

If we look at the plan view geometry of the SVFS in the chain sector (north of Schio), we observe a junction with the Gamonda fault (GF) close to Posina, ca 10 km northwest of Schio (Fig. 5; Sedeà and Di Lallo, 1986; Zampieri et al., 2003; Massironi et al., 2006; Zampieri and Massironi, 2007). The NW-trending SVF and the NNE-trending GF depicts a Y-type triple junction, with transport direction at a high-angle to the branchline, which is sub-vertical. This classification derives from the very detailed analysis of the shear zone and brittle faults junctions, also called zipper junctions, performed by Passchier and Platt (2017; see inset in Fig. 5). A wide variety of possible configurations for merging faults is possible. In our case, the plan view geometry of the junction falls within the “sinistral opening zipper” model, where the SVF south of Posina can have a sinistral strike-slip movement likewise the GF, while the SVF north of Posina must experience a dextral movement (Fig. 5). The space problem produced by the intersection of simultaneously active faults with opposing slip sense can be solved by splitting (or unzipping) the merged faults (Platt and Passchier, 2016). Not being supported by the enlightening paper of Passchier and Platt (2017), an earlier solution to the triple junction of the SVFS was presented by Zampieri et al. (2003), in which work the SVFS branch north of Posina was depicted to slip only moderately (i.e. less than the segment south of Posina) with sinistral activity. In the work of Zampieri et al. (2003) the area north of the Posina Triple Junction, bordered by the SVF and the N-S trending faults (i.e. GF-TF-MeF-CF in Fig. 5) has been interpreted as a pop-up rising within a restraining bend of the SVF (Fig. 5). Close to the Posina Triple Junction, this wedge presents contractional structures such as reverse faults and folds (Zampieri et al., 2003), in line with the patterns expected by the Passchier and Platt (2017) model.

According to these models, it is possible that the portion of the SVFS north of the triple junction (PTJ in Fig. 5) has experienced repeated opposite strike-slip movements over time. The emplacement of N-trending basaltic dykes north of PTJ, in the damage zone of the SVF suggests dextral transtension (Zampieri et al., 2003; Fondriest et al., 2012) during the Paleogene, when the area was deformed by nearly E-W extension (Zampieri, 1995). During the initial stages of the Neogene contraction, the SVF may have slipped by sinistral movements, partly inverted by subsequent dextral movements, when the wedge structure north of the triple junction opened the zipper of the merging faults.

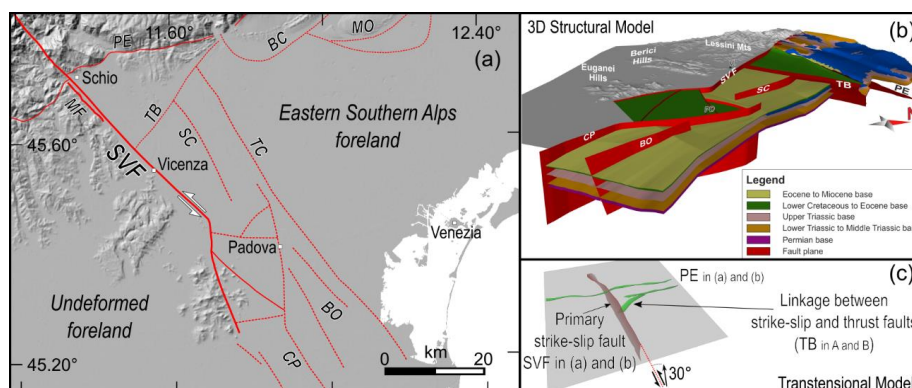
As a matter of fact, the opening zipper model shows right-lateral motion north of Posina and left-lateral motion to the south, in agreement with the available focal mechanisms and to the kinematic model presented by Serpelloni et al. (2016, see Fig. 8).



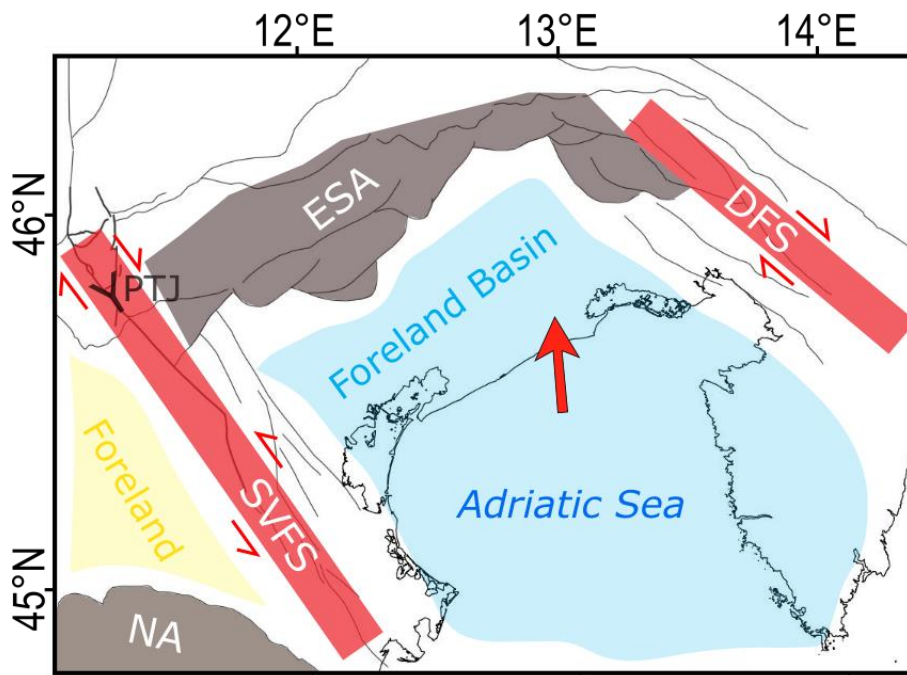


455 **Figure 5.** Intersection (PTJ: Posina Triple Junction) of the Schio-Vicenza fault and a set of inherited linked faults (GF: Gamonda fault, TF: Tormeno fault, MeF: Melegnon fault, CF: Carotte fault) on the western side of Eastern Southern Alps. The space problem produced by the intersection of simultaneously active faults with opposing slip sense can be solved by splitting (or unzipping) the merged fault (inspired by Zampieri et al., 2003; Zampieri and Massironi, 2007; inset of the right corner from Passchier and Platt, 2017). PE: Pedemontana thrust; TB: Thiene-Bassano buried fault. The kinematics refers to the last Neogene activity, possibly extending until the Present. Digital elevation model is EU-DEM v1.1. Available online: 460 <https://land.copernicus.eu/imagery-in-situ/eu-dem> (accessed on 13 April 2021).

The study of the interaction of strike-slip dominated structures at high angle with thrust belt fronts have been conducted by Fedorik et al. (2019) by means of analogue model experiments. Their 30° transtensional model produces some Riedel shear faulting and is dominated by two major steep strike-slip faults having also a normal dip-slip component, evolving with the propagation of the sub-vertical strike-slip principal fault zone, which crosscuts the fore thrust (Fig. 6). This transtensional setting resembles very closely to the real structure composed by the SVF and the Eastern Southern Alps thrust front. In fact, the northern Adria plate is pushing with a NNW direction against the Alpine belt, with a small angle with respect to the NW-trending SVF (see Figs. 1 and 7), and the kinematic modeling of the GPS data shows an expected transtension on the SVF (Serpelloni et al., 2016) in agreement with the dip-slip displacement shown by the available seismic sections crossing the SVFS (Fig. 2). Besides, the kinematics and the relative position of the strike-slip faults with respect to the chain front are similar in both real geology and the models. The only difference of the analogue modelling with respect to the real structure is the timing of the deformation phases. In the models the thrust belt development predates the strike-slip activation in the foreland, while in the study area the development of the SVF predates that of the frontal thrusts of the chain. However, the SVF activity continues after the thrust formation and the interaction between the two structures is very similar to the model. In fact, the buried TB fault, which connects obliquely the PE thrust with the SVF (Figs. 6a and 6b) was reproduced by the models and corresponds to the new thrust front of the Fig. 6c. The similarity of the analogue modelling of Fedorik et al. (2019) with the real setting of the study area strongly supports the interpretation of the SVFS south of Schio as a sinistral strike-slip fault.



480 **Figure 6.** SVFS in map, in 3D view and its analogue model. (a) structural sketch of the SVFS (BC: Bassano-Cornuda thrust;  
 BO: Bovolenta fault; CP: Conselve-Pomposa fault; MF: Malo fault; MO: Montello thrust; PE: Pedemontana thrust; SC:  
 Sandrigo-Camisano fault; SVF: Schio-Vicenza fault; TB: Thiene-Bassano thrust; TC: Travettore-Codevigo fault); (b) 3D  
 485 reconstruction of the SVFS, adapted and modified from Torresan et al. 2020; (c) sketch derived from the 30°-transtensional  
 model predicting the development of an oblique thrust fault connecting the frontal thrust of the chain and the  
 transverse structure, corresponding to the TB thrust of panels (a) and (b). Digital elevation model of panel (a) is EU-DEM  
 v1.1. Available online: <https://land.copernicus.eu/imagery-in-situ/eu-dem> (accessed on 13 April 2021).



490 **Figure 7.** Schematic sketch of the indenter model bounded by the SVFS to southwest and the dextral transpressional Dinaric  
 Fault System (DFS) to northeast. Notice the sinistral transtensional movement of the SVFS south of Posina Triple Junction  
 (PTJ) according to the indenter model, and the dextral strike-slip movement north of PTJ, according to the zipper model (shown  
 with a Y). ESA: Eastern Southern Alps outermost fronts; NA: Northern Apennines outermost front. The red arrow shows the  
 average direction of the relative motion of Adria with respect to fixed Eurasia (Serpelloni et al., 2016; Devoti et al., 2017).

495 The meaning of the SVFS in the framework of the regional tectonics and its long-lived history is shared with other fault systems  
 found in the foreland of the central and southern Apennines and Sicily. These shear zones are inherited structures reactivated  
 in the current stress regime driven by the plate convergence, and can host the sources of moderate to large earthquakes (e.g.



Di Bucci et al., 2010). The most important of them are: (a) the Mattinata-Gondola fault system in the Gargano area, a segment of which located along its western prolongation generated the  $M_w$  5.7, 2002 Molise seismic sequence (Valensise et al., 2004; Di Luccio et al., 2005), and is probably the source of the  $M_w$  6.7, 1627 earthquake (DISS Working Group, 2018); (b) the E-W striking fault system associated with the  $M_w$  5.8, 1990 Potenza earthquake (Di Luccio et al., 2005; Boncio et al., 2007; DISS Working Group, 2018); and (c) the Scicli-Ragusa fault system (Di Bucci et al., 2010). All these fault systems, during their long history, have seen different tectonic phases often characterised by opposite sense of shear (e.g. first right-lateral strike-slip, then left-lateral strike-slip). As a consequence, they are generally characterised by low energy release mechanisms, with low stress drop and, consequently, small coseismic slip, as seen during the 1990 and 2002 seismic sequences (Calderoni et al., 2010). In general, these large long-lived shear zones located in the foreland areas are responsible in Italy for the largest seismic release outside the active thrust and extensional belts, and play a primary role in the seismotectonics of the central Mediterranean region.

## 6 Conclusions

In the northern part of the Adria plate the transverse structure of the SVFS has been active with different tectonic phases and different kinematics at least from the Mesozoic. Nowadays, its westernmost segment (SVF s.s., i.e. the segment from the Adige Valley to the Euganei Hills) is an inherited and well-developed structural element with a significant imprint in the landscape, reactivated in the current stress regime. If the long-term dip-slip component of faulting is evident on the SVF and on other buried segments of the fault system, on the contrary, the horizontal component of the movement is not well constrained although it could have accrued a total of a few kilometers of displacement with sinistral motion (Table 1).

Unfortunately, apart from the moderate instrumental seismicity near its northern end, the moderate historical seismicity near its central sector, and the geological evidence of recent deformation of a travertine mound close to the Euganei Hills, there is little evidence to constrain the recent activity of the SVFS, and even its role in the geodynamic framework of the Southern Alps is still a matter of debate. Although its kinematics is still largely unknown, we observe that it interrupts the continuity of the Southern Alps thrust fronts in the Veneto sector, and controls the forward propagation of the thrusts, suggesting that it played a key passive role in controlling the geometry of the active fault systems and the current distribution of seismic release. As a matter of fact, the true kinematics of this fault system is ambiguous, since the instrumental data along the northernmost part (to the north of Posina) of the SVFS point to a dextral strike-slip activity. The most important event is the 13 September 1989,  $M_w$  4.9 earthquake, located north of Schio. However, geodynamic considerations point to a role for the SVFS similar to that of the Dinaric system being presently characterized by dextral strike-slip faulting, and accommodating to the east the indentation of Adria against the Alpine chain (Fig. 7). If so, the SVFS on the whole should have a sinistral component of motion. While further evidence on the kinematics of the SVFS shall arise solely from the results of further research in the area, the apparently conflicting data can be reconciled in the sinistral opening "zipper" model, where intersecting pairs of simultaneously active faults with different sense of shear merge into a single fault via a zippered section. The junction of the three branches would be located at Posina, about 10 km northeast of Schio. The comparison with available analogue models supports a sinistral strike-slip kinematics for the main portion of the SVF from the plain to the Posina triple junction. The debate on the strike-slip kinematics of the SVF has been tentatively solved and seems to work unless new data will threaten the model presented here.

The SVF does not appear to have generated earthquakes larger than magnitude 5.0. Moderate instrumental seismicity is clustered in the northern portion of this structure, and historical catalogues show a scattered distribution of low-magnitude earthquakes along its central and southern portions. However, the set of geomorphological, structural and geodynamic features suggest that individual segments of the SVFS may host significant ( $M$  5.5+) earthquakes. As discussed in chapter 4, the



causative fault of the largest known earthquake of the Po Plain, the 1117 M<sub>w</sub> 6.5 Veronese earthquake, is believed to be a long-lived, inherited fault cutting the foreland.

540 Therefore, although the earthquake potential of the SVFS is still uncertain, and need to be fully characterised, these long-lived transverse structures cutting through the foreland, such as the SVFS, may represent a substantial, and still poorly recognised source of seismic hazard for the area.

#### **Author contribution**

All the authors shared the conceptualization of the manuscript and its preparation.

#### 545 **Competing interests**

The authors declare that they have no conflict of interest.

#### **Acknowledgements**

We thank Filippo Torresan and Giovanni Toscani for discussion about their models presented in our Figure 6, the 3D model of the SVFS and the analogue modeling of a transverse structure, respectively. DZ acknowledge *Università degli Studi di*  
550 *Padova* for DOR research fundings.



## References

- Anderlini, L., Serpelloni, E., Tolomei, C., De Martini, P. M., Pezzo, G., Gualandi, A., and Spada, G.: New insights into active tectonics and seismogenic potential of the Italian Southern Alps from vertical geodetic velocities, *Solid Earth*, 11, 1681-1698, doi:10.5194/se-11-1681-2020, 2020.
- 555
- Argnani, A., Rovere, M., and Bonazzi, C.: Tectonics of the Mattinata fault, offshore south Gargano (southern Adriatic Sea, Italy): Implications for active deformation and seismotectonics in the foreland of the Southern Apennines, *GSA Bulletin*, 121, 9/10; 1421-1440, doi:10.1130/B26326.1, 2009.
- Bader, J. W.: Structural inheritance and the role of basement anisotropies in the Laramide structural and tectonic evolution of the North American Cordilleran foreland, *Wyoming, Lithosphere*, 11, 1, 129-148, doi: 10.1130/L1022.1, 2019.
- 560
- Barbieri, G., Castellarin, A., De Zanche, V., and Sedeà, R.: Foglio 36 Schio. In Castellarin, A. (ed.) Carta tettonica delle Alpi Meridionali (scala 1:200000), 113-119, Pubbl. n. 441, Progetto Finalizzato Geodinamica (S.P. 5), C.N.R., 1981.
- Basili, R., Valensise, G., Vannoli, P., Burrato, P., Fracassi, U., Mariano, S., Tiberti, M. M., and Boschi, E.: The Database of Individual Seismogenic Sources (DISS), version 3: summarizing 20 years of research on Italy's earthquake geology, *Tectonophysics*, 453, 20-43, doi:10.1016/j.tecto.2007.04.014, 2008.
- 565
- Bigi, G., Cosentino, D., Parotto, M., Sartori, R., and Scandone, P.: Structural model of Italy. Sheet n. 1. In: Castellarin, A., Coli, M., Dal Piaz, G. V., Sartori, R., Scandone, P., Vai, G. B. (Eds.), Progetto Finalizzato Geodinamica, CNR, Roma, 1990.
- Bittner, A.: Trias von Recoaro, *Verhandl. K. k. geol. Reichs.*, 3, 71-78, Wien, 1879.
- 570
- Bosellini, A., Carraro, F., Dal Cin, R., De Vecchi, Gp., Gatto, G., Gatto, G. O., Monese, A., Piccoli, G., Rui, A., Sturani, C., Sassi, F. P., and Zirpoli, G.: The geological map of Italy 1:100,000 scale, sheet 49 *Verona*, Servizio Geologico d'Italia, Roma, 1968.
- Braga, Gp., Castellarin, A., Corsi, M., De Vecchi, Gp., Gatto, G.O., Largaiolli, T., Monese, A., Mozzi, G., Rui, A., Sassi, F. P., and Zirpoli, G.: The geological map of Italy 1:100,000 scale, sheet 36 *Schio*, Servizio Geologico d'Italia, Roma, 1968.
- 575
- Brancolini, G., Civile, D., Donda, F., Tosi, L., Zecchin, M., Volpi, V., Rossi, G., Sandron, D., Ferrante, G. M., and Forlin, E.: New insights on the Adria plate geodynamics from the northern Adriatic perspective, *Mar. Pet. Geol.*, doi: 10.1016/j.marpetgeo.2019.06.049, 2019.
- Burrato, P., Poli, M. E., Vannoli, P., Zanferrari, A., Basili, R., Galadini, F.: Sources of Mw 5+ earthquakes in northeastern Italy and western Slovenia: an updated view based on geological and seismological evidence, *Tectonophysics*, 453, 157-176, doi: 10.1016/j.tecto.2007.07.009, 2008.
- 580
- Burrato, P., Vannoli, P., Fracassi, U., Basili, R., and Valensise, G.: Is blind faulting truly invisible? Tectonic-controlled drainage evolution in the epicentral area of the May 2012, Emilia-Romagna earthquake sequence (northern Italy), *Annals of Geophysics*, 55, 4, 525-531, doi:10.4401/ag-6182, 2012.
- Cai, J. and Lü, X.: Substratum transverse faults in Kuqa Foreland Basin, northwest China and their significance in petroleum geology, *Journal of Asian Earth Sciences*, 107, 72-82, doi:10.1016/j.jseas.2015.03.012, 2015.
- 585
- Cantelli, L. and Castellarin, A.: Analisi e inquadramento strutturale del sistema Schio-Vicenza, *Atti Tic. Sc. Terra*, ser. spec., 1, 231-245, 1994.
- Caracciolo, C. H., Camassi, R., and Castelli, V.: Revisione e integrazione sistematica di terremoti che interessano il territorio della Pianura Padana centro-orientale, *Rapporto interno, Istituto Nazionale di Geofisica e Vulcanologia*, 26 pp, 2009.



- 590 Carrillo, E., Guinea, A., Casas, A., Rivero, L., Cox, N., Vázquez-Taset, Y. M.: Tectono-sedimentary evolution of transverse extensional faults in a foreland basin: Response to changes in tectonic plate processes, *Basin Research*, 32, 1388-1412, doi: 10.1111/bre.12434, 2020.
- Castaldini, D. and Panizza, M.: Inventario delle faglie attive tra i Fiumi Po e Piave e il Lago di Como (Italia Settentrionale), *Il Quaternario*, 4, 2, 333-410, 1991.
- 595 Castellarin, A. and Cantelli, L.: Neo-alpine evolution of the southern eastern Alps, *J. Geodyn.*, 30, 251-274, doi:10.1016/S0264-3707(99)00036-8, 2000.
- De Boer, J.: The geology of the Vicentinian Alps (NE Italy), *Geol. Ultraiect.*, 11, 1-178, 1963.
- De Pretto, O.: Le due faglie di Schio, *Studio di geologia dei Monti di Schio*, *Boll. Soc. Geol. It.*, 39, 255-312, 1920.
- Devoti, R., D'Agostino, N., Serpelloni, E., Pietrantonio, G., et al: A Combined Velocity Field of the Mediterranean Region, *Annals of Geophysics*, 60, 2, S0215, doi:10.4401/ag-7059, 2017.
- 600 Di Bucci, D., Ravaglia, A., Seno, S., Toscani, G., Fracassi, U., Valensise, G.: Seismotectonics of the Southern Apennines and Adriatic foreland: insights on active regional E-W shear zones from analogue modeling, *Tectonics* 25, TC4015, doi:10.1029/2005TC001898, 2006.
- Di Bucci, D., Burrato, P., Vannoli, P., Valensise, G.: Tectonic evidence for the ongoing Africa-Eurasia convergence in central Mediterranean foreland areas: a journey among long-lived shear zones, large earthquakes, and elusive fault motions. *J. Geophys. Res.* 115, B12404. doi:10.1029/2009JB006480, 2010.
- 605 DISS Working Group: Database of Individual Seismogenic Sources (DISS), Version 3.2.1: A compilation of potential sources for earthquakes larger than M 5.5 in Italy and surrounding areas, <http://diss.rm.ingv.it/diss/>, Istituto Nazionale di Geofisica e Vulcanologia, doi:10.6092/INGV.IT-DISS3.2.1, 2018.
- 610 Doglioni, C. and Bosellini, A.: Eoalpine and Mesoalpine tectonics in the Southern Alps, *Geologische Rundschau*, 76, 3, 735-754, 1987.
- Duvall, M. J., Waldron, J. W. F., Godin, L., Najman, Y.: Active strike-slip faults and an outer frontal thrust in the Himalayan foreland basin, *PNAS*, 117, 30, 17615-17621, doi:10.1073/pnas.2001979117, 2020.
- Eva, E. and Pastore, S.: Revisione dei meccanismi focali dell'Appennino settentrionale. *Atti GNGTS, 12° Conv.*, Roma, pp.147-159, 1993.
- 615 Fabbri, P., Pola, M., Piccinini, L., Zampieri, D., Roghel, A., Dalla Libera, N.: Monitoring, utilization and sustainable development of a low-temperature geothermal resource: A case study of the Euganean Geothermal field (NE Italy), *Geothermics*, 70, 281-294, doi: 10.1016/j.geothermics.2017.07.002, 2017.
- Fabiani, R.: The geological map of Italy 1:100,000 scale, sheet n. 36 *Schio*, Istituto Geografico Militare, Uff. Idrogr. R. Magistrato alle Acque, Venezia, 1925.
- 620 Faccioli, E.: Recent evolution and challenges in the Seismic Hazard Analysis of the Po Plain region, Northern Italy, *Bull. Earthquake Eng.*, 11, 5-33, doi:10.1007/s10518-012-9416-1, 2013.
- Fedorik, J., Toscani, G., Lodolo, E., Civile, D., Bonini, L., and Seno, S.: Structural analysis and miocene-to-present tectonic evolution of a lithospheric-scale, transcurrent lineament: the Sciacca Fault (Sicilian channel, central Mediterranean Sea), *Tectonophysics*, 722, 342-355. doi:10.1016/j.tecto.2017.11.014, 2018.
- 625



- Fedorik, J., Zwaan, F., Schreurs, G., Toscani, G., Bonini, L., and Seno, S.: The interaction between strike-slip dominated fault zones and thrust belt, *Journal of Structural geology, structures: Insights from 4D analogue models, Journal of Structural Geology*, 122, 89-105, doi:10.1016/j.jsg.2019.02.010, 2019.
- 630 Finetti, I.: Le condizioni geologiche della regione di Venezia alla luce di recenti indagini sismiche, *Boll. Geof. Teor. Appl.*, 14, 275-290, 1972.
- Fondriest M., Smith S. A. F., Di Toro, G., Zampieri, D., and Mittempergher, S.: Fault zone structure and seismic slip localization in dolostones, an example from the Southern Alps, Italy, *J. Struct. Geol.*, 45, 52-67, doi:10.1016/j.jsg.2012.06.014, 2012.
- 635 Galadini, F., Poli, M. E., and Zanferrari, A.: Seismogenic sources potentially responsible for earthquakes with  $M \geq 6$  in the eastern Southern Alps (Thiene-Udine sector, NE Italy), *Geophys. J. Int.*, 161, 3, 739-762, doi:10.1111/j.1365-246X.2005.02571.x, 2005.
- Guidoboni, E., Ferrari, G., Mariotti, D., Comastri, A., Tarabusi, G., Sgattoni, G., and Valensise, G.: CFTI5Med, Catalogo dei Forti Terremoti in Italia (461 a.C.-1997) e nell'area Mediterranea (760 a.C.-1500). Istituto Nazionale di Geofisica e Vulcanologia (INGV), doi:10.6092/ingv.it-cfti5, 2018.
- 640 Guidoboni, E., Ferrari, G., Tarabusi, G., Sgattoni, G., Comastri, A., Mariotti, D., Ciuccarelli, C., Bianchi, M. G., and Valensise, G.: CFTI5Med, the new release of the catalogue of strong earthquakes in Italy and in the Mediterranean area, *Scientific Data*, doi:10.1038/s41597-019-0091-9, 2019.
- Heberer, B., Reverman, R. L., Fellin, M. G., Neubauer, F., Dunkl, I., Zattin, M., Seward, D., Genser, J., and Brack, P.: Postcollisional cooling history of the eastern and Southern Alps and its linkage to Adria indentation, *Int. J. Earth Sci.*, 645 doi:10.1007/s00531-016-1367-3, 2017.
- ISIDE Working Group: Italian Seismological Instrumental and Parametric Database (ISIDE). Istituto Nazionale di Geofisica e Vulcanologia (INGV), doi:10.13127/ISIDE, 2007.
- Kastelic, V., Vannoli, P., Burrato, P., Fracassi, U., Tiberti, M. M., and Valensise, G.: Seismogenic sources in the Adriatic Domain, *Marine and Petroleum Geology*, 42, 191-213, doi:10.1016/j.marpetgeo.2012.08.002, 2013.
- 650 Klebelsberg, R.: Die Fortsetzung der Schio-Linie nach Südtirol. *Verhandl. Geol. Reichs.*, 11, 247-260, Wien, 1918.
- Laubscher, H. P.: Shallow and deep rotations in the Miocene Alps, *Tectonics*, 15, 1022-1035, 1996.
- Maddalena, L.: Osservazioni geologiche sul Vicentino e in particolare sul bacino del Posina, *Boll. Soc. Geol. It.*, 35, 657-743, 1906.
- 655 Mantovani, E., Babbucci, D., Tamburelli, C., and Viti, M.: A review on the driving mechanism of the Tyrrhenian-Apennines system: Implications for the present seismotectonic setting in the Central-Northern Apennines, *Tectonophysics*, 476, 22-40, doi:10.1016/j.tecto.2008.10.032, 2009.
- Mantovani, E., Viti, M., Babbucci, D., Tamburelli, C., and Cenni, N.: Geodynamics of the central-western Mediterranean region: plausible and non-plausible driving forces, *Marine and Petroleum Geology*, 113, 104121, doi:10.1016/j.marpetgeo.2019.104121, 2020.
- 660 Mariucci, M. T. and Montone, P.: IPSI 1.4, Database of Italian Present-day Stress Indicators, Istituto Nazionale di Geofisica e Vulcanologia (INGV), doi:10.13127/IPSI.1.4, 2020.



- Massironi, M., Zampieri, D., and Caporali, A.: Miocene to Present major fault linkages through the Adriatic indenter and the Austroalpine-Penninic collisional wedge (Alps of NE Italy). In: Moratti, G. & Chalouan, A. (eds) *Tectonics of the Western Mediterranean Region and North Africa*. Geological Society, London, Special Publications, 262, 245-258, 2006.
- 665 Meloni, F. and Molin, D.: Il terremoto padano del 13 gennaio 1909, *Atti del 6° Convegno Annuale del GNGTS*, Roma, 1, 269-294, 1987.
- Molon, F.: I Colli Berici del vicentino. *Sunto geologico*. *Boll. Soc. Geol. Ital.*, 1, 47-79, 1882.
- Moratto, L., Saraò, A., and Priolo, E.: Moment Magnitude (M<sub>w</sub>) Estimation of Weak Seismicity in Northeastern Italy, *Seismol. Res. Lett.*, 88, 6, 1455-1464, doi:10.1785/0220170063, 2017.
- 670 Moulin, A., Benedetti, L., Rizza, M., Jamšek Rupnik, P., Gosar, A., Bourlès, D., Keddadouche, K., Aumaître, G., Arnold, M., Guillou V., et al.: The Dinaric fault system: Large-scale structure, rates of slip, and Plio-Pleistocene evolution of the transpressive northeastern boundary of the Adria microplate, *Tectonics*, 35, 10, 2258-2292, doi:10.1002/2016tc004188, 2016.
- Negri, A.: *Carta geologica della provincia di Vicenza alla scala 1:100000*, C.A.I., Fabris, Vicenza, 1901.
- 675 Passchier, C. W. and Platt, J. P.: Shear zone junctions: Of zippers and freeways, *J. Struct. Geol.*, 95, 188-202, doi:10.1016/j.jsg.2016.10.010, 2017.
- Pellegrini, G. B.: Aspetti morfologici ed evidenze neotettoniche della Linea Schio-Vicenza, *Suppl. Geogr. Fis. Dinam. Quat.*, I, 69-82, 1988.
- Pessina, V., Franceschina, G., Vannoli, P., Luzi, F., and Pacor, F.: Damage distribution and seismological model of the November 2004, Salò (Northern Italy) earthquake, *First European Conference on Earthquake Engineering and Seismology (ECEES)*, 3-8 September 2006, Geneva, Switzerland, 2006.
- 680 Platt, J. P. and Passchier, C. W.: Zipper junctions: A new approach to the intersections of conjugate strike-slip faults, *Geology*, 44, 10, 795-798, doi:10.1130/G38058.1, 2016.
- Pia, J.: *Untersuchungen über die Tektonik der Lessinischen Alpen und über die Verwendung statistischer Methoden in der Tektonik*. *Denkschr. Naturhist. Museum, Geol.- Pal.*, ser. 2, 230 pp., Wien, 1923.
- 685 Pola, M., Gandin, A., Tuccimei, P., Soligo, M., Deiana, R., Fabbri, P., and Zampieri, D.: A multidisciplinary approach to understanding carbonate deposition under tectonically controlled hydrothermal circulation: A case study from a recent travertine mound in the Euganean Hydrothermal System, northern Italy, *Sedimentology*, 61, 172199, doi: 10.1111/sed.12069, 2014a.
- 690 Pola, M., Ricciato, A., Fantoni, R., Fabbri, P., and Zampieri, D.: Architecture of the western margin of the North Adriatic foreland: the Schio-Vicenza fault system, *Ital. J. Geosci.*, 133, 2, 223-234, doi:10.3301/IJG.2014.04, 2014b.
- Pola, M., Fabbri, P., Piccinini, L., and Zampieri, D.: Conceptual and numerical model of a tectonically controlled geothermal system: the case study of the Euganean Geothermal System, Northern Italy, *Central European Geology*, 58, 129-150, doi: 10.1556/24.58.2015.1-2.9, 2015.
- 695 Pola, M., Cacace, M., Fabbri, P., Piccinini, L., Zampieri, D., and Torresan, F.: Fault control on a thermal anomaly: conceptual and numerical modeling of a low-temperature geothermal system in the Southern Alps foreland basin (NE Italy). *Journal of Geophysical Research: Solid Earth*, 125, 5, e2019JB017394, doi: 10.1029/2019JB017394, 2020.
- Pondrelli, S., Salimbeni, S., Ekström, G., Morelli, A., Gasperini P., and Vannucci, G.: The Italian CMT dataset from 1977 to the present, *Phys. Earth Planet. In.*, 159, 286-303, doi:10.1016/j.pepi.2006.07.008, 2006.





- 700 Pondrelli, S., Visini, F., Rovida, A., D'Amico, V., Pace, B., and Meletti, C.: Style of faulting of expected earthquakes in Italy as an input for seismic hazard modeling, *Nat. Hazards Earth Syst. Sci.*, 20, 3577-3592, doi:10.5194/nhess-20-3577-2020, 2020.
- Ratschbacher, L., Frisch, W., Linzer H. G., and Merle, O.: Lateral extrusion in the Eastern Alps, Part 2: Structural analysis, *Tectonics*, 10, 2, 257-271, doi: 10.1029/90TC02623, 1991.
- 705 Restivo, A., Bressan, G., and Sugan, M.: Stress and strain patterns in the Venetian Prealps (north-eastern Italy) based on focal-mechanism solutions, *Boll. Geof. Teor. Appl.*, 57, 1, 13-30, doi:10.4430/bgta0166, 2016.
- Rovida, A., Locati, M., Camassi, R., Lolli, B., and Gasperini, P.: The Italian earthquake catalogue CPTI15, *Bulletin of Earthquake Engineering*, 18, 7, 2953-2984, doi:10.1007/s10518-020-00818-y, 2020.
- Rovida, A., Locati, M., Camassi, R., Lolli, B., Gasperini P., and Antonucci, A. (eds): Italian Parametric Earthquake Catalogue (CPTI15), version 2.0. Istituto Nazionale di Geofisica e Vulcanologia (INGV). <https://doi.org/10.13127/CPTI/CPTI15.3>, 2021.
- 710 Sbarra P., Burrato, P., Tosi, P., Vannoli, P., De Rubeis, V., and Valensise, G.: Inferring the depth of pre-instrumental earthquakes from macroseismic intensity data: a case-history from Northern Italy, *Scientific Reports*, 9, 15583, doi:10.1038/s41598-019-51966-4, 2019.
- 715 Scalia, A.: Sulla fauna degli strati a Spirigera Trigonella Schloth. Sp. della Val Sinello, presso Camposilvano, in Vallarsa (Trentino meridionale), *Boll. Soc. Geol. Ital.*, 36, 205-215, 1917.
- Scardia, G., Festa, A., Monegato, G., Pini, R., Rogledi, S., Tremolada, F. and Galadini F.: Evidence for late Alpine tectonics in the Lake Garda area (northern Italy) and seismogenic implications, *Geol. Soc. Am. Bull.*, 127, 1-2, 113-130, doi:10.1130/b30990.1, 2015.
- 720 Schauroth, K.: Übersicht der geognostischen Verhältnisse der Gegend von Recoaro in Vicentinischen. *K. Akad. Wiss.*, 17, 481-562, Wien, 1855.
- Sedeo, R. and Di Lallo, E.: Carta geologica dell'area di Valli del Pasubio-Posina-Laghi. In: De Vecchi, Gp. et al., Note illustrative della carta geologica dell'area di Valli del Pasubio-Posina-Laghi, alla scala 1:20000, *Mem. Sci. Geol.*, 38, 187-205, 1986.
- 725 Semenza, E.: La fase giudicariense, nel quadro di una nuova ipotesi sull'orogenesi alpina nell'area italo-dinarica, *Mem. Soc. Geol. It.*, 13, 187-226, 1974.
- Serpelloni, E., Vannucci, G., Anderlini, L., and Bennett, R.A.: Kinematics, seismotectonics and seismic potential of the eastern sector of the European Alps from GPS and seismic deformation data, *Tectonophysics*, 688, 157-181, doi:10.1016/j.tecto.2016.09.026, 2016.
- 730 Slejko, D. and Rebez, A.: Caratteristiche Sismotettoniche dell'area Benacense, *Atti GNGTS, 7° Convegno*, Roma, 157-167, 1988.
- Slejko, D., Carulli, G. B., Nicolich, R., Rebez, A., Zanferrari, A., Cavallin, A., Doglioni, C., Carraro, F., Castaldini, D., Iliceto, V., Semenza E., and Zanolli, C.: Seismotectonics of the eastern Southern-Alps: a review, *Boll. Geof. Teor. Appl.*, 31, 109-136, 1989.
- 735 Suess, E.: Entstehung der Alpen, Braumüller, 168 pp., Wien, 1875.



- Tarabusi, G., Ferrari, G., Ciuccarelli, C., Bianchi, M. G., Sgattoni, G., Comastri, A., Mariotti, D., Valensise, G., and Guidoboni, E.: CFTILab, Laboratorio Avanzato di Sismologia Storica, Istituto Nazionale di Geofisica e Vulcanologia (INGV), doi:10.13127/CFTI/CFTILAB, 2020.
- Taramelli, T.: Geologia delle provincie venete, con carte geologiche e profili, Mem. R. Acc. Lincei, 3, 303-536, 1882.
- 740 Torresan, F., Piccinini, L., Pola, M., Zampieri, D., and Fabbri, P.: 3D hydrogeological reconstruction of the fault-controlled Euganean Geothermal System (NE Italy), *Engineering Geology*, 274, doi:10.1016/j.enggeo.2020.105740, 2020.
- Toscani, G., Marchesini, A., Barbieri, C., Di Giulio, A., Fantoni, R., Mancin, N., and Zanferrari, A.: The Friulian-Venetian Basin I: architecture and sediment flux into a shared foreland basin, *Italian Journal of Geosciences*, doi:10.3301/IJG.2015.35, 2016.
- 745 Turrini, C., Lacombe, O., and Roure, F.: Present-day 3D structural model of the Po Valley basin, Northern Italy, *Mar Petr. Geol.*, 56, 266-289, doi:10.1016/j.marpetgeo.2014.02.006, 2014.
- Vannoli, P., Burrato, P., and Valensise, G.: The seismotectonics of the Po Plain (Northern Italy): tectonic diversity in a blind faulting domain, *Pure Appl. Geophys.*, 172, 1105-1142, doi:10.1007/s00024-014-0873-0, 2015.
- Vannucci, G. and Gasperini, P.: The new release of the database of Earthquake Mechanisms of the Mediterranean Area (EMMA Version 2), *Annals of Geophysics*, 47, 2004.
- 750 Viganò, A., Bressan, G., Ranalli, G., and Martin, S.: Focal mechanism inversion in the Giudicarie-Lessini seismotectonic region (Southern Alps, Italy): Insights on tectonic stress and strain, *Tectonophysics*, 460, 1, 106-115, doi:10.1016/j.tecto.2008.07.008, 2008.
- Viganò, A., Scafidi, D., Ranalli, G., Martin, S., Della Vedova, B., and Spallarossa, D.: Earthquake relocations, crustal rheology, and active deformation in the central-eastern Alps (N Italy), *Tectonophysics*, 661, 81-98, doi: 10.1016/j.tecto.2015.08.017, 2015.
- 755 Zampieri, D.: Tertiary extension in the southern Trento Platform, Southern Alps, Italy, *Tectonics*, 14, 645-657, doi:10.1029/94TC03093, 1995.
- Zampieri, D., Massironi, M., Sedeà, R., and Sparacino, V.: Strike-slip contractional stepovers in the Southern Alps (northeastern Italy), *Eclogae geol. Helv.*, 96, 115-123, 2003.
- 760 Zampieri, D. and Massironi, M.: Evolution of a poly-deformed relay zone between fault segments in the eastern Southern Alps, Italy. In: Cunningham D. & Mann P. (eds), *Tectonics of Strike-slip Restraining and Releasing Bends*, Geol. Soc., London, Special Publication, 290, 351-366, doi:10.1144/SP290.13, 2007.
- Zampieri, D., Fabbri, P., and Pola, M.: Structural constraints to the Euganean Geothermal Field (NE Italy), *Rendiconti online della Soc. Geol. It.*, 5, 238-240, 2009.
- 765 Zanferrari, A., Bollettinari, G., Carobene, L., Carton, A., Carulli, G. B., Castaldini, D., Cavallin, A., Panizza, M., Pellegrini, G. B., Pianetti, F., and Sauro, U.: Evoluzione neotettonica dell'Italia nord-orientale, *Mem. Sci. Geol.*, 35, 355-376, 1982.