

Establishing an integrated workflow identifying and linking surface and subsurface lineaments for mineral exploration under cover: Example from the Gawler Craton, South Australia

Ulrich Kelka¹, Cericia Martinez¹, Carmen Krapf², Stefan Westerlund¹, Ignacio Gonzalez-Alvarez^{3,4}, Mark Pawley², and Clive Foss¹

¹CSIRO - Deep Earth Imaging Future Science Platform, Australia

²Geological Survey of South Australia, Department for Energy and Mining, Australia

³CSIRO - Mineral Resources, Discovery Program, Australia

⁴University of Western Australia, Centre for Exploration Targeting, Perth, Australia

Correspondence: Ulrich Kelka(uli.kelka@csiro.au)

Abstract. Mineral exploration in areas comprising thick and complex cover represents an intrinsic challenge in Australia. Cost and time efficient methods that help to narrow down exploration areas are therefore of particular interest to the Australian mining industry and for mineral exploration world wide. Based on a case study around the Tarcoola gold mine in the regolith dominated South Australian ~~Central~~ central Gawler Craton we suggest an exploration targeting workflow based on the joint analysis of surface and subsurface lineaments. The datasets utilized in this study are a digital elevation model and radiometrics that represent surface signals and total magnetic intensity and gravity attributed to subsurface signals.

We compare automatically and manually mapped lineament sets derived from remotely sensed data. In order to establish an integrated concept for exploration through cover based on the best suited lineament data, we will point out the most striking differences between the automatically and manually detected lineaments and compare the datasets that represent surficial in contrast to subsurface structures. After determining which mapping technique is best suited for preliminary exploration in ~~regolith dominated areas, such as the Central Gawler Craton~~ regions comprising thick cover, we will show how merging surface and subsurface lineament data may prove useful for mapping prospective areas. We propose that target areas are represented by ~~areas of~~ high lineament densities that are adjacent to regions comprising high density of intersections.

Copyright statement. TEXT

15 1 Introduction

The Gawler Craton is one of the three largest Archean to Proterozoic Cratons within the Australian Continent (~~figure~~ Figure 1b) and the major crustal province in South Australia (Hand et al., 2007). Australian Cratons are rich in mineralization (e.g., Pilbara and Yilgarn Craton (Witt et al., 1998)) and the Gawler Craton hosts significant economic mineralization such as Olympic Dam, Challenger, Prominent Hill, and Tarcoola. The discovery of new deposits is particularly challenging in this part of Australia

20 due to limited surface outcrops, variable thickness and complexity of the cover, with few surface features that can be used as direct proxies for mineral exploration.

To narrow down potential areas for exploration, and to enhance the general understanding of the geology, the Geological Survey of South Australia (GSSA) has recently acquired high-resolution magnetic, radiometric, and digital elevation data across the Gawler Craton via the Gawler Craton Airborne Survey (GCAS) (Katona et al., 2019). Here we utilize these and **existing**
25 **previously acquired** gravity datasets for the extraction of lineaments from surface (digital elevation model (DEM) and radiometrics) and subsurface (magnetics and gravity) datasets. Lineaments are linear features which can reflect geological structures and the extraction of such features can be important for mineral exploration, as well as for the investigation of fault activity (neotectonic) and water resource analysis (Vassilas et al., 2002). In images, photos, or maps, lineaments are represented by straight or slightly curved lines, linear patterns or an alignment of discontinuity patterns (Wang, 1993). A relationship between
30 lineaments and mineralization has been suggested for a long time and proven a useful tool for mineral exploration (O'Driscoll, 1986). We can distinguish between surface lineaments that are obtained from surface data and geophysical lineaments that are derived from processed geophysical data whereas it is widely assumed that surface lineaments represent structural features which, in the simplest model, are related to dip-slip or strike-slip faults (Florinsky, 2016). This assumes that a considerable displacement is associated with faulting in the subsurface that leads to a detectable pattern on the surface (Boucher, 1997). In
35 contrast, geophysical lineaments represent major subsurface boundaries (e.g. Hall, 1986; Langenheim and Hildenbrand, 1997) that are not necessarily associated with faults but rather with lithological or petrophysical contrasts.

We choose the area in the central Gawler craton around the Tarcoola mine, an Au-deposit mined for over 125 years (Daly et al., 1990). As the structural controlled mineralization often localizes around discontinuity intersections (Wilson et al., 2018) this area represents a perfect study area for investigating the potential of surface and subsurface lineaments as a potential exploration targeting tool. The thick and complex cover (up to 500m) overlying the basement units makes it particularly challenging to identify target areas and a cost efficient approach to exploration is desirable in such a region.

40

In this study, we use the above-mentioned new GCAS datasets to identify surface and subsurface lineament features and design a workflow to automatically extract and analyse these features. We assume that elevation and radiometric data relates to surficial features, while gravity and magnetics data represent **subsurface features**structures below the cover. This study is part
45 of a broader effort to geologically link basement architecture with surface linear features, landforms, and landscape variability in the **Central-central** Gawler Craton (González-Álvarez et al., 2020).

Towards that end, we further explore the use of targeting maps based on surface and subsurface lineaments. Targeting maps derived from lineament analysis are often based on the density of lineaments per unit area. Density maps combining subsurface lineaments (potential field data) and surface lineaments (digital elevation model and satellite imagery) **was-were**
50 proposed as an exploration tool for groundwater (Epuh et al., 2020) and for mineral exploration (Mohammadpour et al., 2020). Lineament intersections were also used previously for the analysis of groundwater (Ilugbo and Adebisi, 2017) and locations of intersecting structural elements were suggested to represent favourable target areas for mineral exploration (Sheikhrhimi et al., 2019; González-Álvarez et al., 2019; Krapf and Gonzalez-Alvarez, 2018; González-Álvarez et al., 2020). In hydrocarbon exploration cross-strike discontinuities were suggested as an exploration tool for natural gas (Wheeler, 1980). **Here, we present**

55 ~~such targeting maps based on both lineament and intersection density using the surface and subsurface lineaments for the study area.~~

The insights of this study will help to better understand how to identify basement linear structures and how these lineaments could be related to surface lineaments or geology in the context of the Central Gawler Craton, and to provide better targeting of surface areas to detect subsurface mineral systems in this region. If a link between surface and subsurface features can be established, this could point towards deep-seated fault zones that comprise considerable displacement right into modern geological times. It was shown that Archean gold mineralizations are often associated with crustal-scale shear zones (Eisenlohr et al., 1989; and the study presented here aims at assisting with the detection of such zones under cover to enhance exploration targeting around the Tareoola mine.

We apply edge enhancement filtering to digital elevation data and perform automatic and manual lineament extraction on all datasets to compare both approaches and results. We discuss the advantages and shortcomings of different edge detection filters applied to the subsurface and surface datasets and present a workflow (Figure 1a) to help with the identification of linear features that could be linked to main basement geological features.

2 Geological Overview

The ~~study area is situated in the Central Gawler Craton~~ Gawler Craton is the oldest and largest geological province in South Australia (~~figure 1~~ and represents one of the three major Australian Cratons (Figure 1c)). The ~~Gawler Craton region~~ is host to several economic iron oxide copper gold ore deposits (IOGC) of which Olympic Dam is world class (Figure 1b). Part of this style of mineralisation is the Olympic IOGC province, which forms a 100 to 200km wide roughly north-south trending belt at the eastern margin of the Gawler Craton (Skirrow et al., 2007). The largest known mineral occurrence in the ~~study area~~ area investigated is the Tareoola Mine that hosts disseminated or veinlet-type ~~mineralization~~ Au-mineralization mainly in brittle to brittle-ductile faults and shears (Hand et al., 2007). Ongoing exploration in the central Gawler Craton targets Au, Cu-Au, Pb-Zn, Fe, Ni in the crystalline basement (Sheard et al., 2008). The expected commodities within the investigated region are mainly Au and Fe and are likely located in proximity to crustal scale structures that provided conduits for the upwelling of deep crustal fluids. Such large scale reactivated tectonic features often form major crustal boundaries that are detectable with gravity or potential field methods (Motta et al., 2019). It was shown that Archean gold mineralizations are often associated with such crustal-scale shear zones (Eisenlohr et al., 1989; Fraser et al., 2007). If surface expression of such structures can be identified, this indicates structures that prevailed active for a long time, comprise a high amount of deformation or represent a strong lithological contrast. In the framework of the central Gawler mineral-systems, the vicinity of such structures indicate potential exploration targets.

Three major orogenic events, corresponding to crustal formation and tectono-thermal alterations, are recorded by the crystalline basement of the Gawler Craton: the Sleaford Orogeny (Paleoproterozoic, 2440 Ma), the Kimban Orogeny (Paleoproterozoic, 1845–1700 Ma), and the Kararan Orogeny (Mesoproterozoic, 1650–1540 Ma) (Ferris et al., 2002; Swain et al., 2005; Reid et al., 2014; Kositcin, 2010). Three major mineral systems are related to these three deformation-magmatic events whereas

the Tarcoola mineral field is attributed to the Kararan system ($\approx 1570\text{Ma}$) (Gum, 2019). As outlined by Hand et al. (2007) the exact timing and spatial distribution of the tectonostratigraphic sequences within the Gawler Craton remain a controversy and reworking of existing mineralization during reactivation of existing crustal-scale fluid conduit has to be considered (Gum, 2019). The last considerable-large-scale deformation in the Gawler Craton was the reactivation of shear zones between 1470 and 1450 Ma (Hand et al., 2007). After this time, only minor near-surface movements are recorded within the study area (Sheard et al., 2008).

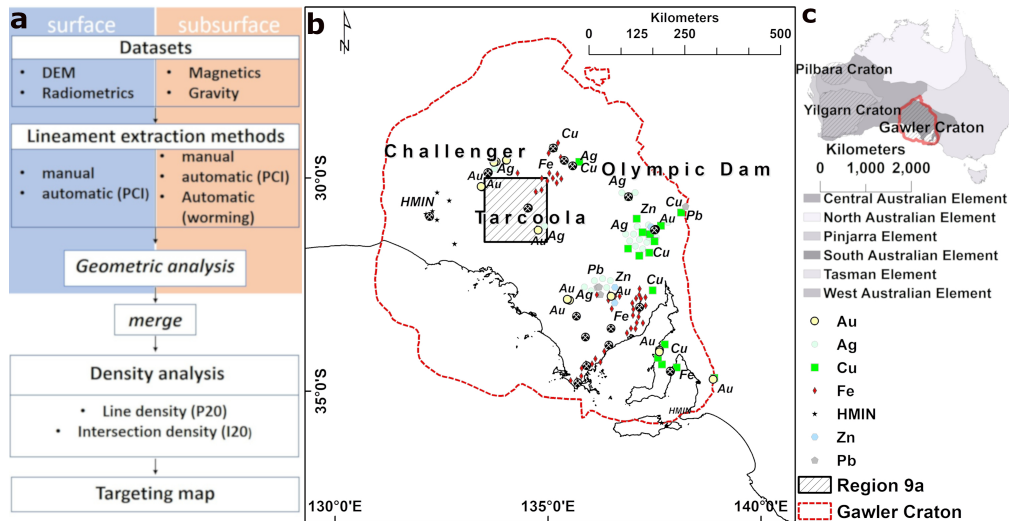


Figure 1. a Interpreted ages of the basement lithology of Large mineral occurrences in the Gawler Craton. The hatched rectangle in the centre represents the area investigated in this study economic mineral commodities include Cu, Au, Fe, Ag, Pb, Zn, Co, Ni, Cr, Mn, Ti, V, PGE, Mo, W, Sn, and REE. **b** Overview map of the Australian continent showing the major crustal blocks and the locations of mineral rich Archean to Proterozoic tectonic provinces. The Gawler Craton spans across nearly the entire South Australian Crustal element. **c** Outline of the workflow applied in this study to obtain targeting maps from surface and subsurface datasets.

The bulk of the Paleo- to Mesoproterozoic rocks of the Gawler Craton enclose an Archean Core in the central Gawler Craton with the oldest units being of Late Archean age (Reid et al., 2014). Internally, the Gawler Craton is subdivided into several different domains based on contrasts in magnetic, gravity, lithological, structural, geochronological, isotopic, and geochemical characteristics (Ferris et al., 2002; Fairclough et al., 2003; Kositcin, 2010). In figure 1a the interpreted ages of the main basement lithologies are shown in the framework of the domains. The different rock units are often separated by crustal-scale shear zones that often coincide with the boundaries of the individual blocks. The region around Tarcoola includes four mayor provinces of the central Galwer Cratons: the Christie, Wilgena, and Nuyts subdomains, and the Harris Greenstone belt (Figure 2a).

2.1 Basement and cover sequence

The key geologic features ~~of interest that our study seeks~~ that we seek to explore are structural and lithology ~~changes~~ discontinuities in the basement and if and how they may relate to today's landscape and current topographic relief. In the following we ~~describe~~ the brief the dominant lithologies in the study area from the oldest to youngest unit and highlight the expected variability of aeromagnetic intensities and gravity data.

~~The bulk are Paleo- to Mesoproterozoic rocks of the Gawler Craton enclose an Archean Core in the Central Gawler. The oldest units are part of the Late Archean Mulgathing Complex (Reid et al., 2014), present in the north-western and central part of the study area and are often enclosing the major shear zones (figure 2).~~

110 ~~The~~ interpreted Precambrian basement geology of the ~~Lake~~ Harris Greenstone Belt comprises east-northeast-trending linear magnetic highs that often correlate with broad gravity signatures and are flanked by ovoid to elongate magnetic lows and highs (Hoatson et al., 2002). Rocks of the Harris Greenstone Belt are found along the Flinke and Yerda Shear Zones and at the eastern margin in the central part of ~~the study area~~ Figure 2b.

115 ~~Rocks of the Hiltaba Suite make up the majority within the study area (see legend Figure 2) are prominent within the area of interest~~ and include large ~~plutonic plume-like structures south of the Yerda Shear Zone~~ plutons. The northeastern part of the study area was affected by the predominantly northwest-trending Gairdner Dyke Swarm at 827 Ma (Huang et al., 2015, and references therein). The youngest structure in the ~~study area region~~ is the Mulgathing Trough in the north western that has an inferred Permian age.

120 Most rocks in the ~~study area region~~ are of igneous origin with only minor portions of metasediments. The magnetic signatures could help to distinguish between different rock types as suggested by Hoatson et al. (2002) who showed that Archean granitic gneisses and granites are often irregular or elongated bodies with low amplitude magnetic signatures, whereas Proterozoic granites comprise both zoned and massive ovoid plutons of low and high magnetization. For the Hitaba Suite, Schmidt and Clark (2011) already pointed out the high variability in airborne magnetic signature.

125 Overlying the crystalline basement of the Gawler Craton in the ~~study analysed~~ area are Palaeozoic, Mesozoic and Cenozoic sedimentary sequences that combined form significant but variably thick ~~transported~~ cover ranging in thickness from 0 to >600m. However, the distribution of each is poorly understood (Hou, 2004).

The oldest preserved cover is the Late Carboniferous to Early Permian post-glacial sediments within the Mulgathing Trough in the north-western corner of ~~the study area (figure 3)~~ Figure 2 (Nelson, 1976; Hibbert, 1995). Magnetic source depth analysis reveals that the trough ~~is in places~~ could in places be more than 600 metres deep, with the maximum depths probably not
130 detected (Foss et al., 2019).

The terrain across most of the study area is relatively flat to moderately undulating. Prominent topographic highs are localised around dissected rocky outcrops. The surface is characterised either by aeolian sand covering variably weathered bedrock, mostly in elevated parts of the landscape, or saline playa lakes and drainage tracing topographic lows. One distinct feature is the longitudinal dunefield that ~~occupied~~ occupies an extensive area in the south-western and southern part ~~the study area~~ (figure(Figure 3) with individual dunes over several kilometres in length and dune crest mainly trending W-E.

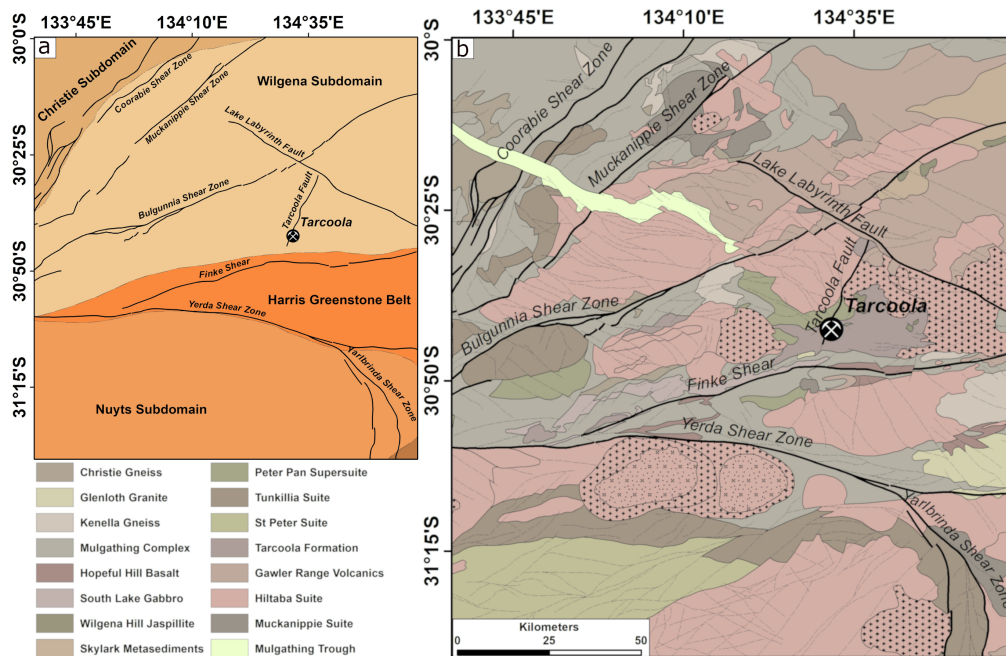


Figure 2. **a** Subsurface interpretation of the study area based on magnetic, outcrops and drill hole data (Pawley and Wilson, 2019). Large mylonitic shear zones cross the area dominantly in a SW-NE direction. Strong influence on feature extraction is expected from plutonic bodies and mylonite zones. **b** Structural domains of the study area. The boundaries of the domains often coincide with crustal-scale shear zones. The location within the Gawler Craton of the area shown in this figure is indicated in [figure 1](#).

2.2 Structural Framework

A solid geology interpretation was undertaken around Tarcoola in the central Gawler Craton (Wilson et al., 2018; Pawley and Wilson, 2019) using the new GCAS aeromagnetic data that was collected between 2017 and 2018, at 60 m ground clearance with 200 m spacing on east-west flight lines (Foss et al., 2019). ~~The data was reprocessed to produce a series of analytical products intended to aid interpretation.~~ It is possible to recognise two main types of linear geological structures in the aeromagnetic data; namely shear zones and faults. Shear zones are zones of relative displacement, where localised greater strain leads to ductile deformation. Shear zones can range from discrete planar structures to broader corridors of deformed and foliated rock. Faults are brittle fractures, or zones of fractures, which accommodate movement between two blocks of rock. Faults and shears can be recognised as relatively discrete zones ~~that were demagnetised during fluid flow~~ whose magnetic signature was altered by circulating fluids, or by the juxtaposition of two blocks of rock with different magnetic character.

~~The study area~~ The area in Figure 2 can be divided into a series of structural domains with distinct faults patterns. Few faults are recognised in the Christie Domain, although this could be due to the bland magnetically low character of the region. One exception is the >80 km-long, northwest-trending Mulgathing Trough ([figure 2a](#) [Figure 2b](#)), which can be recognised as it is filled with Permian glacial sediments that affect its magnetic response.

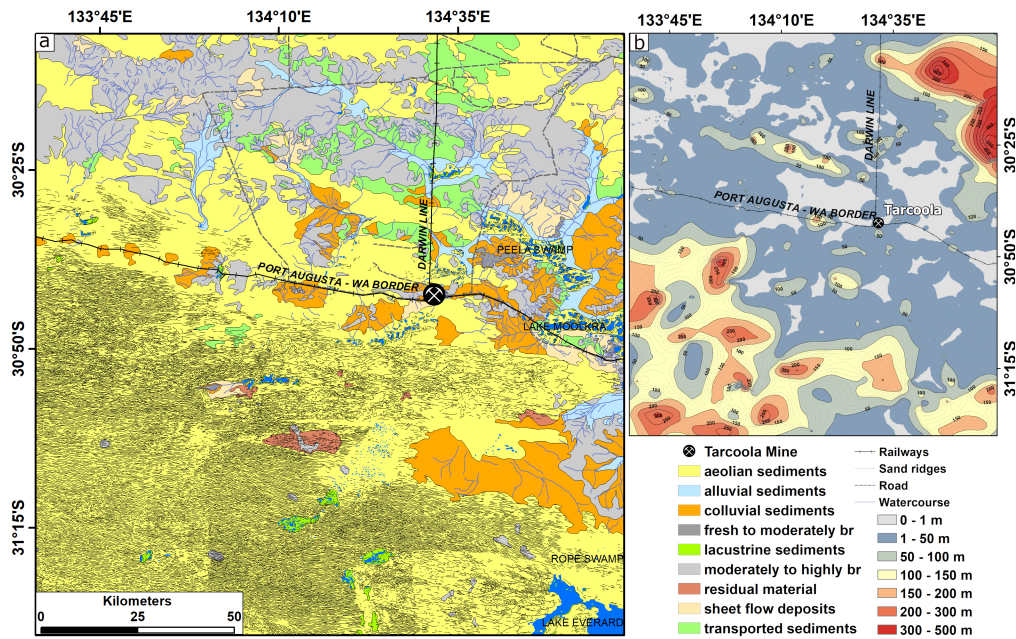


Figure 3. **a** Surface feature map of the study area displaying regolith material (Krapf et al., 2012), roads, watercourses and sand ridges. Especially linear structures such as roads and sand ridges are expected to strongly influence the automated lineament extraction process. **b** Depth to basement map of the study area (Cowley et al., 2018).

150 The Wilgena Domain contains northwest-trending faults that are particularly prominent as narrow ~~demagnetised non-magnetic~~ zones in the magnetic Hiltaba Granite plutons (~~figure 3b~~ [Figure\(2b\)](#)). Some faults are relatively straight to curvilinear and can be traced for >80 km (e.g. the Lake Labyrinth Fault), whereas others are shorter and form anastomosing and bifurcating structures. The northwest-trending faults typically show apparent dextral offset, and usually cut the major shear zones. An exception to this trend is the north-northeast-trending Tarcoola Fault that appears to propagate from the [southern](#) Finke Shear
 155 ~~Zone to the south~~.

The faults form several patterns in the Nuyts Domain (~~figure 3b~~ [Figure\(2\)](#)). To the northwest, the faults are northwest trending with dextral offset. The eastern Nuyts Domain is characterised by northeast-trending sinistral faults, aligned sub-parallel to the ~~Kooniba Shear Zone~~ [Koonibba Shear Zone located to the southwest of Figure 2 \(see detailed map in \(González-Álvarez et al., 2020\)\)](#). In the central Nuyts Domain, a Hiltaba Suite pluton has a long, straight northwest-trending margin that is bound by the
 160 Kooniba Shear Zone. The granite pluton adjacent to the shear is cut by abundant faults that occur in several orientations and looks like a fracture zone. None of these faults extend across the Kooniba Shear Zone into the rocks of the St Peter Suite.

In general, the shear zones are prominent on aeromagnetic images as they form extensive structures that often separate lithological packages with contrasting magnetic character or are associated with changing trend of the magnetic grain. ~~The faults~~ [\(e.g. Figure 4c\)](#). ~~Faults~~ often form shorter, narrow ~~demagnetised features~~ [features with changing magnetic expressions](#)
 165 that can be difficult to recognise in rocks with low magnetic response.

a Large mineral occurrences in the Gawler Craton. The economic mineral commodities include Cu, Au-Fe, Ag, Pb, Zn, Co, Ni, Cr, Mn, Ti, V, PGE, Mo, W, Sn, and REE. **b** Known mineralization in the study area. The Tareoola mine is the only major mining activity in the region and hosts Gold (Ag) and Silver (Ag) as main commodities.

Ongoing exploration in the Central Gawler Craton (figure ?? are Au, Cu-Au, Pb-Zn, Fe, Ni in the crystalline basement (Sheard et al., 2008).
170 The expected commodities within the study area are mainly Au and Fe and are likely located in proximity to crustal-scale structures that provided conduits for the upwelling of deep crustal fluids. Large-scale reactivated tectonic features often form major crustal boundaries that are detectable with gravity or potential field methods (Motta et al., 2019). If surface expression of such structures can be identified, this indicates structures that prevailed active for a long time, comprise a high amount of deformation or represent a strong lithological contrast. In the framework of the Central Gawler mineral systems, the vicinity
175 of such structures represents interesting exploration targets.

Our work seeks to identify such structures by extracting representative lineaments from remote sensing data, with the aim of developing a workflow that may be viable for identifying exploration targets. We assume that lineaments present in gravity, magnetic, radiometric, and topographic data are the representation of the structural elements of interest, i.e. faults, shear zones, lithological changes. We distinguish between subsurface and surface lineaments based on each data type. We choose
180 a relatively under-explored area in the Central Gawler craton around the Tareoola mine, an Au deposit mined for over 125 years (Daly et al., 1990). As the structural-controlled mineralization often localizes around discontinuity intersections (Wilson et al., 2018) this area represents a perfect study area for investigating the potential of surface and subsurface lineaments as a potential exploration targeting tool. The thick and complex cover overlying the basement units makes it particularly challenging to identify target areas and a cost-efficient approach to exploration is desirable in such a region.

185 The following section describes the newly developed workflow to extract lineaments using manual and automated approaches, discuss which methods may be more appropriate for use in exploration targeting, and present a mechanism to link lineaments representing structural features at depth with the surface in the Central Gawler study area. [For details on the signature of fault in aeromagnetic data we refer to Grauch and Hudson \(2007\).](#)

3 Methodology

190 We seek to establish a workflow to systematically identify and explore links between lineaments in surface and subsurface data. As part of this, we perform a comparison of different approaches to lineament extraction including automated and manual interpretation. In the following section we introduce the datasets used for lineament extraction, then describe the lineament analysis we employ to compare lineaments extracted by different techniques, followed by a description of the three lineament extraction techniques used.

195 3.1 Datasets

Lineaments extracted from a subset of the Gawler Craton Airborne Survey (GCAS), the world's largest high-resolution airborne geophysical and terrain imaging program at 200m line spacing, were analysed by Foss et al. (2019). The data that is

released under the Creative Commons Attribution 4.0 International Licence includes total magnetic intensity (TMI), radiometrics (RAD), and digital elevation model (DEM).

200 We utilized the digital elevation model (DEM) derived from laser altimeter subtracted from differential GPS heights (figureFigure 4a), radiometric data (total dose) processed using the Noise Adjusted Singular Value Decomposition (NASVD) (Hovgaard and Grasty, 1997)(figureFigure 4b), total magnetic intensity reduced to pole (figureFigure 4c), and gravimetric data gridded to 100m with a station spacing between 50m and 50,000m (figureFigure 4d). The data presented is freely available through the South Australian Resources Information Geoserver SARIG (<https://map.sarig.sa.gov.au/>).

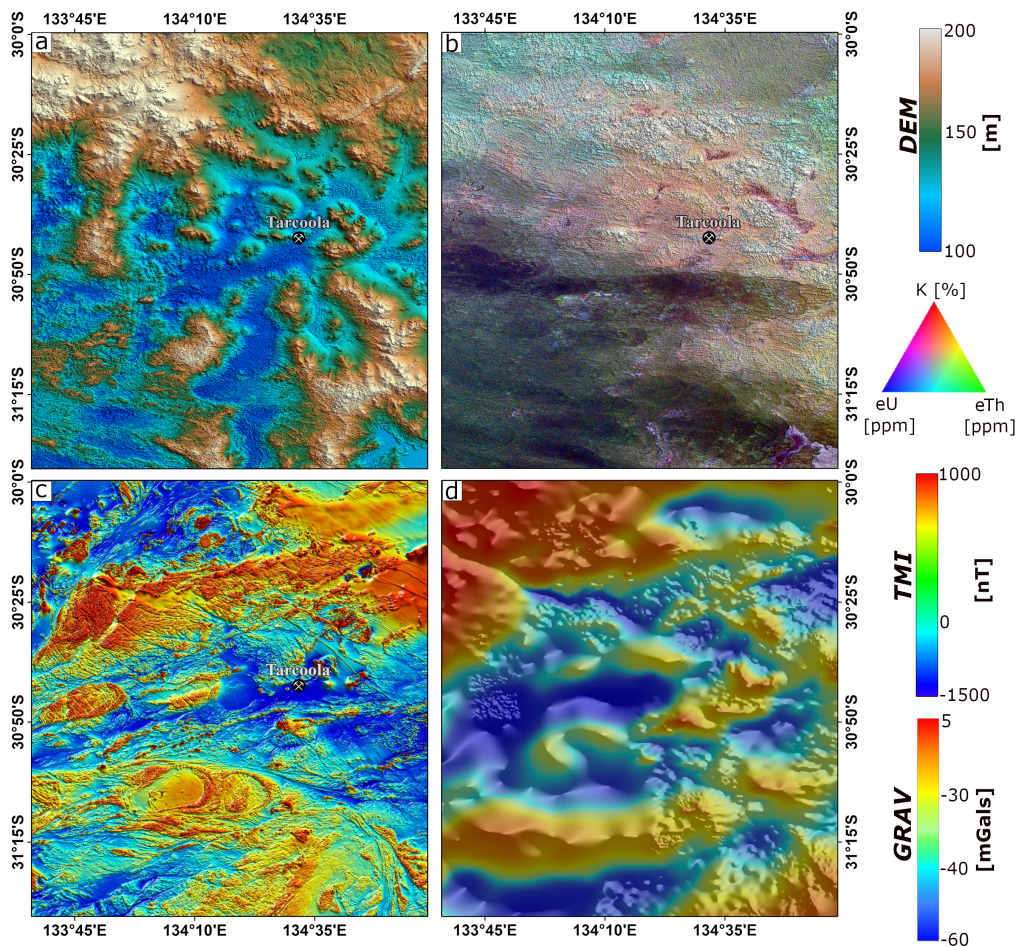


Figure 4. **a** Colour digital elevation model (laser altimeter) [min: 84.08 m; max: 365.33 m], **b** color radiometric dose rate (NASVD corrected) [min: 0.074 nGy/hr; max: 239.30 nGy/hr], **c** color total magnetic intensity (reduced to pole) [min: -1978.16 nT; max: 21638.8 nT], and **d** color and hillshaded Bouguer Anomaly gravity image (Katona, 2017) [min: -158.15; max: 64.74]. Data source: GCAS Region 9a9A, SARIG 2020

205 3.2 Lineament analysis

Automated lineaments analysis allows for obtaining unbiased metrics for comparison of the data in terms of their dominant strike directions. For each dataset the principal orientations are ~~obtained as probability density plots derived by iteratively fitting up to 10 Gaussian to automatically obtained. For simplification we assume that the individual principal strike directions follow Gaussian distributions. We first calculate~~ the kernel density estimation ~~. The number of Gaussians with parameters derived from the data via likelihood estimation that fits the data best is derived by applying~~ using normal distributed kernels. By this we obtain an estimation of the probability density function of the distribution. We then obtain a best-fit model allowing for up to ten principal strike directions (Gaussians). The parameters of the Gaussians are obtained via maximum likelihood fitting. Goodness-of-fit testing is performed based on a modified Akaike ~~information criteria~~ Information Criteria (Akaike, 1998). The amplitudes of the Gaussians are normalized and are proportional to the number of lineaments that belong to this distribution.

210

215 Figure 5 shows the principal orientations of the structural interpretation (figure Figure 2a). Raw kernel density estimates are plotted as a dotted line to which the Gaussian model is fit to. Clearly two perpendicular directions dominate the data with a subordinate set of roughly N-S striking lineaments.

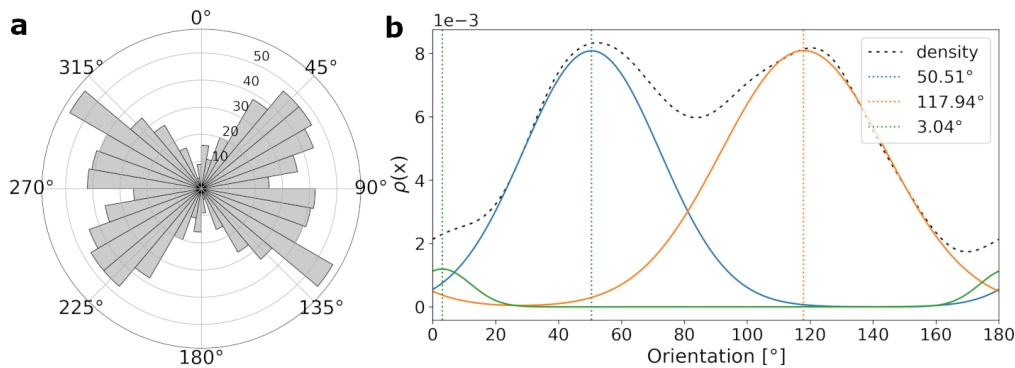


Figure 5. Directional analysis of ~~the study areas~~ structural interpretation (figure Figure 2a). **a** Rose diagram showing the distribution of strike directions of the data with a bin size of 10 degrees. **b** Gaussian distributions fitted to the probability density function obtained via kernel density estimation.

3.3 Manual lineament extraction

Lineaments are pattern breaks within data that the human eye can depict as a straight or somewhat-curved feature in an image (Boucher, 1997). This is dependent on the person's visual ability as well as technical experience and hence mapping the presence and location of surface lineaments can vary significantly between individuals. By applying different types of pre-processing (e.g. edge detection filtering, hill shading etc.) different features in the raster image can be enhanced thus leading to different lineament sets segmented from the same data set. Direct observation-based surface lineament mapping has been

220

225 widely applied in geoscience and has been improved by the increasing availability of high-resolution satellite images as well
as digital elevation models (DEM) and Multi-resolution Valley Bottom Flatness (MrVBF) (Gallant and Dowling, 2003).

230 Surface lineaments were manually mapped in the DEM (Figure 4a) by direct visual identification and digitisation in
ArcGIS 10.6. Figure 6 shows the manually mapped lineaments in the DEM (a) and in the raster representing the mean gradient
component (b). The mean gradient component was calculated as the arithmetic mean of the horizontal and vertical gradient
components obtained through Sobel convolution filtering. Based on the shape of the underlying kernel this edge detection filter
allows for obtaining edges of different orientation (e.g. horizontal or vertical) (Shrivakshan and Chandrasekar, 2012). The
dominant orientation in both datasets is around 106 and 110 degrees, respectively. In both datasets three Gaussians provide the
best fit, whereas the two subordinate directions of both data sets differ significantly.

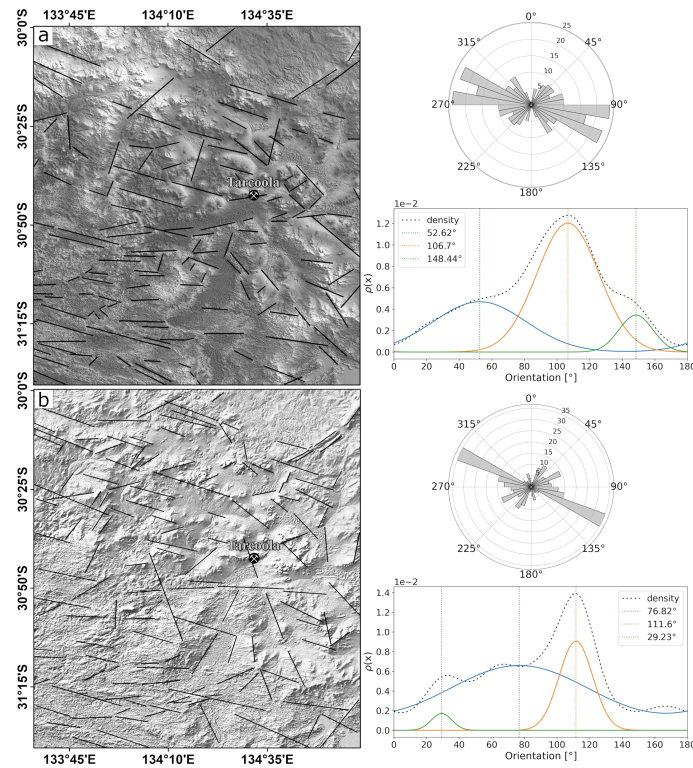


Figure 6. **a** Manually segmented lineaments observed in the unprocessed laser altimeter data. To the right of the map the rose diagram showing the distribution of strike directions (bin size of 10) and the Gaussian model fitted to probability density function is shown. **b** Manually segmented lineaments obtained from the laser altimeter data after edge detection filtering. We show the mean horizontal and vertical gradient components obtained via Sobel convolution filtering. To the right of the map the rose diagram shows the distribution of orientation with a bin size of 10 degrees and the lower plot represents the Gaussian models fitted to the probability density function.

3.4 Automatic Gradient Extraction (Worms)

235 A multi-scale edge detection technique has been applied to the potential field data which produces edge features called “multi-scale edges” (or colloquially “worms”). This technique (Holden et al., 2000; Hornby et al., 1999) relies on a wavelet transform based on the Green’s function of vertical gravity or reduced-to-pole (RTP) total magnetic intensity. A low-resolution multi-scale edge mapping of the whole Gawler Craton was performed by Heath et al. (2009). Foss et al. (2019) applied a higher resolution mapping using the more recent GCAS Region 9A magnetic field data and updated gravity coverage.

240 The potential field data is processed using upward continuation to generate edge features that can be considered representative of different depths. Upward continuation suppresses high frequencies in the data, and increases the weighting of [signal signals](#) from deeper physical property contrasts. Calculation of edge enhancement transforms at different upward continuation heights [produces](#), [producing](#) a series of edge mappings (‘multi-scale edges’ or ‘worms’). Edges derived from the gravity data map subsurface density contrasts, and those from the magnetic field data map subsurface magnetization contrasts. The edges (in particular the shallow edges) depend considerably on data distribution which is very regular for the magnetic field data, but highly irregular for the gravity data. In areas of sparse gravity coverage, it is not possible to map detail in the shallow 245 gravity multi-scale edges. In compensation the gravity field better expresses contributions from deeper property contrasts than the magnetic field. However, the principle value of having multi-scale edges derived from both gravity and magnetic field data is that they map quite separate physical properties, even though both properties depend on lithology. In some cases the contact between two lithologies is both a density and magnetization contrast, and the two multi-scale edge vectors are strongly corre- 250 lated, but in other cases a lithology contact may cause only a significant density contrast or only a significant magnetization contrast, giving rise to edge vectors in only one of the fields. The combination of the two sets of edge vectors is therefore much more informative than either one alone. By their nature potential fields measured above a physical property interface are automatically smoother than the trace of that interface. They cannot include abrupt changes of trends and at higher upward continuations the potential field and multi-scale edge expression of any straight-line property contrast becomes progressively 255 more curved. There are therefore compromises in matching naturally curved multi-scale edges with corresponding straight lineaments extracted from the same dataset. The principal orientation of lineaments is roughly E-W for the gravity and magnetic data ([figureFigure 7](#)). The orientation exhibited by the gravity lineaments ([figureFigure 7b](#)) is uniform with one clear principal orientation. The lineaments derived from the magnetic data ([figureFigure 7a](#)) exhibit three main directions.

3.5 Automatic lineament extraction

260 Lineaments have also been extracted from the DEM, radiometrics, gravity, and magnetics using Geomatica’s LINE function (Geomatics, 2005). This technique relies on properties inherent to the image (e.g. pixel intensity) making use of Canny edge detection ([Shrivakshan and Chandrasekar, 2012](#)) as the basis.

The gradient of an image is computed and pixels that are not a local maximum are suppressed. Edge strength threshold of pixels produces a binary image that, after applying a thinning algorithm, results in skeleton curves that represent edges. If a

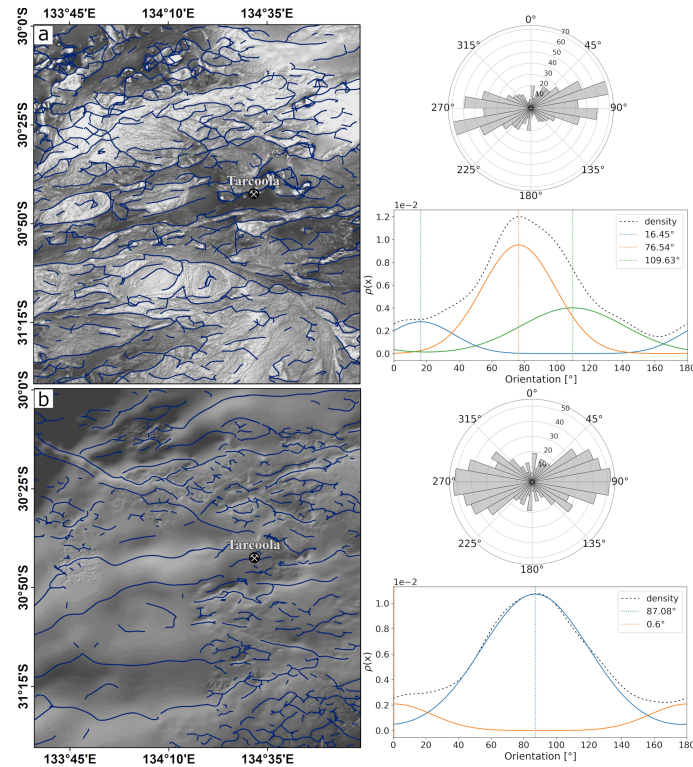


Figure 7. a Automatic gradient extraction with an upward continuation to 2070m performed on the total magnetic intensity after pole reduction. To the right of the map the rose diagram shows strike distribution with a bin size of 10 degrees and the Gaussian functions fitted to the probability density function are shown.

b Automatic gradient extraction with upward continuation to 930m for gravity data. To the right the rose diagram visualizing the orientation distribution and the model fitted to the probability density function are shown. [Upward continuation heights of the gravity and magnetic data were selected such that the lineaments represent similar detail.](#)

265 curve meets a minimum length criterion, the curve is approximated by line segments within an error threshold. Lineaments are the result of linking line segments if they have similar orientation.

PCI Geomatics defines a lineament as a “straight or somewhat-curved feature” ([PCI Geomatics, 2019b](#)) ([Geomatics, 2005](#)) and the parameters control the extent to which edges detected in the image may result in a line feature. Originally intended to be used on radar images, the technique has been widely used in various remote sensing applications (e.g. [Pandey and Sharma, 2019](#)) ([Pandey and Sharma, 2019, e.g.](#)). Edges identified relate to significant changes within a given image and the resulting lineaments are highly dependent on user-specified parameters that control length and segment linkage. [For detailed description of the parameters used in this study we refer to González-Álvarez et al. \(2020\) and Pawley et al. \(2021\).](#)

The lineaments were automatically extracted for datasets representative of surface ([figureFigure 8](#)) and subsurface ([figureFigure 9](#)) features. The surface data yields a single principal orientation of about 90 degrees in both lineament collections.

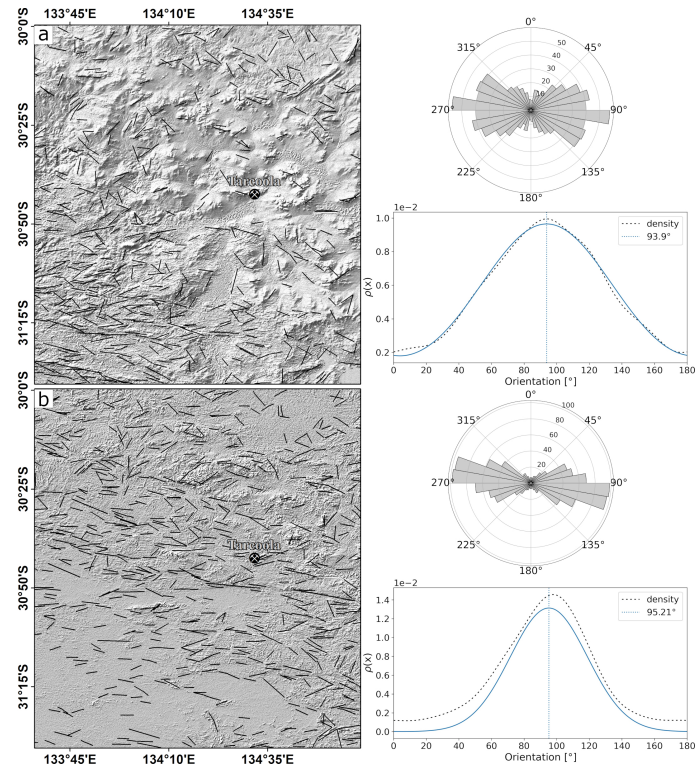


Figure 8. Lineaments detected by PCI Geomatica’s LINE module in (a) the laser altimeter data and in (b) the radiometric (total dose rate). The base map is the mean gradient component of the respective data set used for visualization purposes only. To the right the rose diagram and the models fitted to the probability density function are shown for each data set (bin size of 10).

275 In contrast to the uniform distribution of lineament orientation obtained for the surface layers, the automatically detected subsurface lineaments exhibit two nearly equal principal directions for the total magnetic intensity (figureFigure 9a) and a more uniform distribution obtained for the gravity data (figureFigure 9b). The dominant direction in each subsurface dataset differs significantly and are oriented nearly perpendicular to each other.

4 Comparison of lineament datasets

280 The lineament datasets from the three techniques applied differ the most in terms of their length distribution (figureFigure 10a). In particular, the automatically segmented surface lineaments exhibit a narrow distribution with the highest density limited to regions around the mean and median. The length distributions of the lineaments automatically extracted from the subsurface data show a wider range slightly skewed towards smaller values. It is worth noting that the length tolerance of lineaments is an input parameter and the bias is well represented in the resulting lineament datasets. The automatic gradient extraction (‘worms’)

285 yield more distributed length of lineaments where smaller lineaments dominate the data. Manually extracted lineaments show

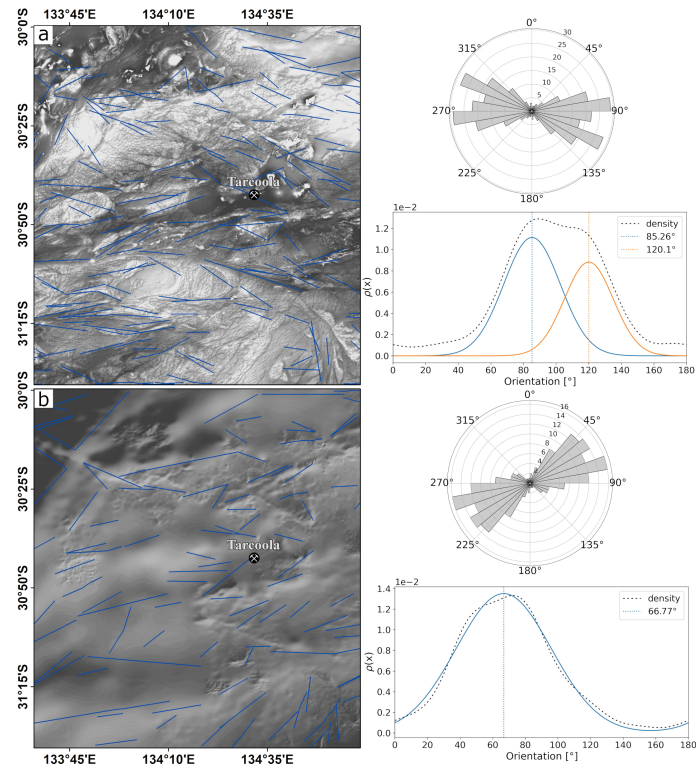


Figure 9. Lineaments automatically extracted with PCI Geomatica LINE module from the total magnetic intensity (reduced to pole) (a) and the gridded gravity data (b). To the right of the maps the rose diagrams show the orientation distribution (bin size of 10 degrees) and the models fitted to the probability density of the empirical data.

a similar length distribution independent of whether the interpretation was performed on the processed or unprocessed elevation data. The structural interpretation that was performed mainly on the total magnetic intensity data exhibits the widest distribution.

The principal strikes exhibit a common E-W trends in the surface and subsurface datasets (figureFigure 10a&b). The dominant orientations of the surface lineaments (figureFigure 10b) scatter around the E-W plane with only one subordinate orientation that is somewhat oriented perpendicular (line labelled 4: automatically extracted from radiometric data). The orientations of the subsurface lineaments are more diverse but also scatter mainly around the E-W plane. Subordinate orientations are more common in the subsurface lineament datasets and most pronounced in the worms (figureFigure 7a&b) and in the lineaments automatically extracted from the total magnetic intensity (figureFigure 9a). The latter exhibits a bimodal distribution that is comparable to the manual structural interpretation (figureFigure 5). Overall, the automatically extracted surface lineaments tend to yield uniform distributions for length and orientation whereas the automatically extracted subsurface lineaments exhibit wider length distributions and non-uniform strike directions. The automatic gradient extraction produces lineament sets with wider length distributions and orientations dominated by an E-W trend with subordinate orientations that are nearly per-

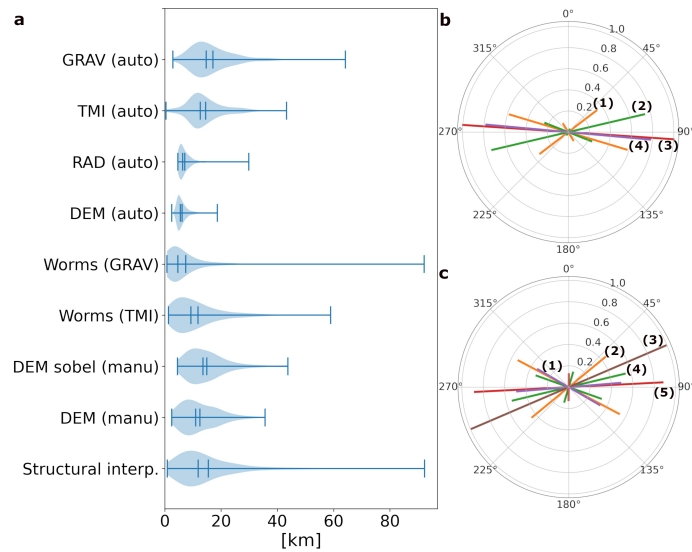


Figure 10. **a** Violin plots showing kernel density estimates of the lineament length distributions. Minimum and maximum values, mean and median are shown as vertical lines for each distribution. **b** Principal orientations of surface data sets derived by fitting Gaussian distributions to the data [1: manual interpretation of laser altimeter; 2: manual interpretation of Sobel filtered laser altimeter; 3: automatic detection in laser altimeter data; 4: automatic detection in radiometric data (total dose count)]. **c** Principal orientation of subsurface data sets obtained via fitting Gaussian distributions to the data [1: Automatic detection in TMI; 2: Structural Interpretation; 3: Automatic detection in gravity data; 4: TMI worms (UC 2070); 5: Gravity worms (UC 930)]. In both rose diagrams the length of the lines corresponds to the amplitude of the Gaussians respectively.

pendicular to the principal strike. Apart from the manual structural interpretation, this method is the only one presented in this study that produces strongly curved lineaments. Lineaments that are manually extracted show a comparable length distribution independent of whether the data was processed by edge detection filtering. The locations and orientations are influenced by the processing and so is the number of features (figureFigure 6a&b). In summary, a dominant orientation trend is observable in the automatically generated surface and subsurface lineaments, ~~and the length distributions show significant differences between mapping methods~~ that is roughly east-west. Only the manually extracted surface lineament set shown in Figure 6b and the structural interpretation (Figure 5) exhibit considerable divergence from this orientation. The main difference between the different lineament sets is demonstrated by their length distributions (Figure 9).

5 Lineament density maps as an Exploration Tool

Here we present a workflow for exploration targeting based on lineament density and intersection density per unit area that utilizes remotely sensed surface and subsurface data. Density maps are calculated for several combinations of surface and subsurface layers. Two types of density maps deriving potential exploration targeting areas are:

Merged datasets

Name	Dataset 1	Dataset 2
Surface manual	DEM (figureFigure 6a)	DEM mean gradient (figureFigure 6b)
Surface auto	Laser altimeter (figureFigure 12a)	Radiometrics DR (figureFigure 12b)
Subsurface worms	TMI UC 2070m (figureFigure 9a)	Gravity UC 930m (figureFigure 9b)
Subsurface auto	TMI RTP (figureFigure 12c)	Gravity (figureFigure 12d)

Table 1. Merged datasets corresponding to surface and subsurface signals obtained with the same method.

- Density maps of lineaments per area (P20)
- Density maps of lineaments intersections per area (I20)

Datasets that are obtained with the same method and correspond to signals either both from the surface or both from the subsurface are merged. The aim of this analysis is to identify areas of maximum line density and intersections in surface and subsurface signals in one dataset. The merged datasets with their name used in this section are shown in table 1.

P20 maps represent the number of lineaments per unit area derived for rectangular sampling windows of size 2kmx2km. The pixel resolution of the derived raster file is set to the search window size. I20 maps are derived by converting the lineament data into a graph representation where intersections between lineaments are vertices (Sanderson et al., 2019). The number of intersections is derived using a pixel size of 2km by 2km and circular sampling windows with a radius of 2.5km. The maps are then up-sampled via bilinear interpolation to a cell size of 500 by 500m. For further details on the lineament analysis the reader is referred to Kelka et al. (2021).

The targeting maps are derived by overlaying the P20 maps with contours of the I20 maps ([Figures 11,12,and 13](#)). As a threshold for identifying mineral potential zones, we set a threshold of 9 intersections per ~~500~~ [500m](#) by 500m pixel size and then visually identified the areas of overall high densities in the vicinity of these specific points as favourable targeting areas. The threshold is kept constant across datasets in this study to ensure a better comparability but would need to be adjusted depending on the underlying data for more reliable targeting.

6 Discussion

This is the first study to utilize the newly acquired high-resolution dataset of South Australia (GCAS Region 9A (Childara)) to investigate the applicability of lineament mapping/extraction from a variety of data sets as a potential exploration tool. As both manual and automatic lineament extraction methods are subject to bias, we first compared the results obtained from both approaches.

During manual interpretation bias arises from subjectivity that is introduced by different interpreters (Raghavan et al., 1993) and can also be caused by scale or variable processing techniques for edge enhancement such as illumination azimuth (Scheiber

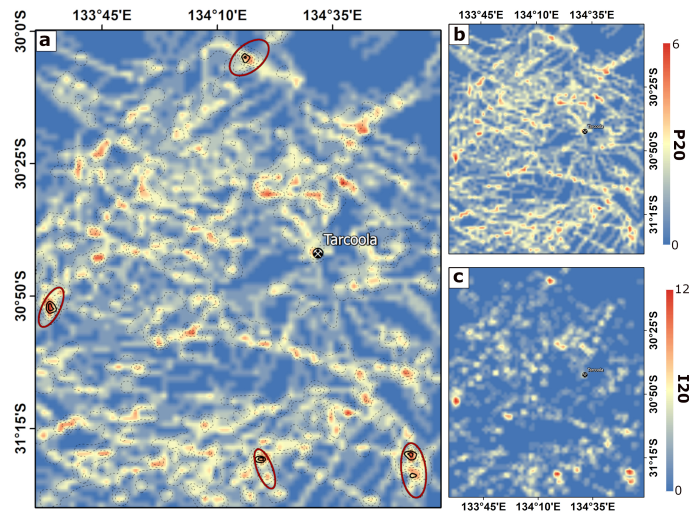


Figure 11. **a** Targeting map derived from “Surface manual” combined with the structural interpretation (figureFigure 2a). **b** Lineament density map (P20). **c** Intersection density map (I20). 4-potential Potential targeting areas that are located at the margins of the study areas indicated by red ellipses.

et al., 2015; Masoud and Koike, 2017). Automatic mapping methods can also be subjected to bias related to the type of applied edge detection filter and underlying segmentation algorithm. We applied the lineament extraction algorithm from the commercial software PCI Geomatica, as one of the main topics of this study is comparing different conventional methods with automatic detection methods. We note that recently several new approaches were suggested for automatic lineament mapping (Zhang et al., 2006; Hashim et al., 2013; Xu et al., 2020; Mohammadpour et al., 2020, e.g.) and utilizing one of these might yield results different to the ones presented here.

We will first discuss the similarities and differences of the surface and subsurface lineaments sets obtained with the different methods pointing out the individual strength or weaknesses. Lineaments obtained by manual mapping in this study scatter around a particular length (figureFigure 10) which is likely to be a result of human bias. The length distribution of automatically extracted surface lineaments is even narrower pointing towards a bias in lineament detection potentially related to the parameter combination applied for automatic mapping (see section 3.5). One other major difference is that the manual mappings yield three main directions for each data set whereas the automatic detection exhibits uniform distributions. The principal orientation of automatically and manually extracted lineaments are similar for the radiometrics and laser DEM, respectively, but differ by a maximum of 18° between the methods when compared to the dominant directions obtained from the manually derived lineaments.

The automatic detection method yields data that is more representative for local scale geomorphological features visible by the strong influence of the sand ridges in the southwestern part of the study area. In contrast, a human interpreter tends to identify the general trends in the data and results can be biased by the preprocessing of the data such as edge enhancement filtering. In summary, a general trend of superficial features extracted automatically and manually scatter around a E-W to

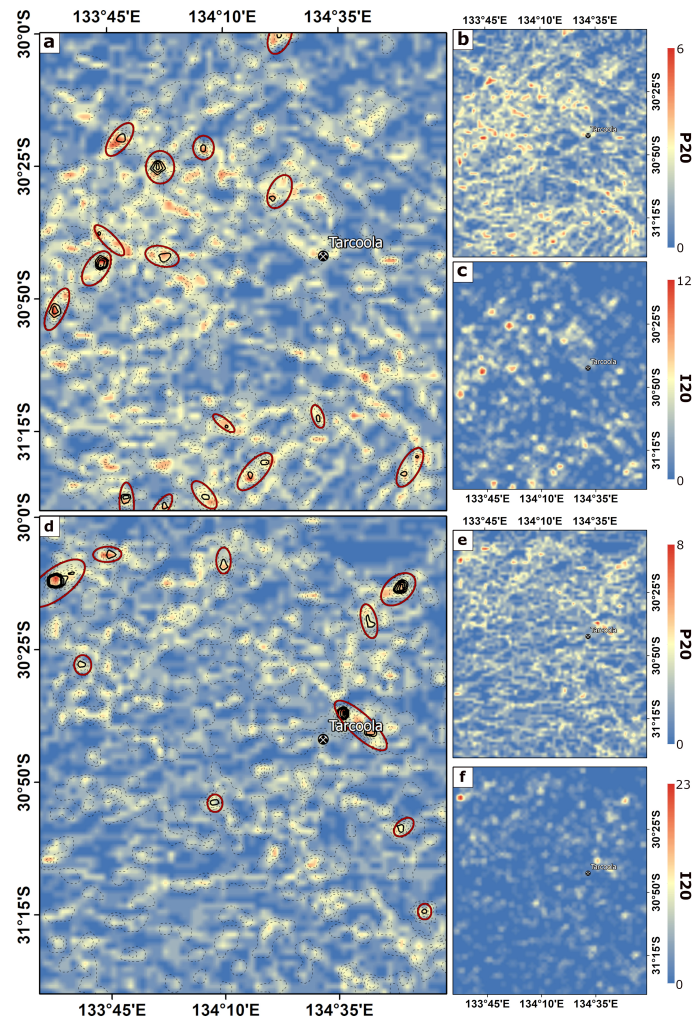


Figure 12. **a** Targeting map derived from “Surface auto” and the structural interpretation. **b** Lineament density map (P20). **c** Intersection density map (I20). **16 potential targeting areas that are located at the margins of the study areas indicated by red ellipses.** **d** Targeting map derived from “surface manual” and the “subsurface worm”). **e** Lineament density map (P20). **f** Intersection density map (I20). **4 potential Potential targeting areas that are located at the margins of the study areas indicated by red ellipses.**

NW-SE-NNW-ESE direction and therefore this orientation is likely a characteristic regional feature of the cover across the **study-investigated** area. Whether automatic lineament extraction is superior to manual mapping cannot be stated with certainty based on the data presented in this study. Choosing one method over the other might depend on the type and the thickness of cover. Generally human investigators identify more regional trends, which are probably hard to detect automatically. The reason behind this is that a human interpreter will detect the conscious trends of lineaments and will merge them even if there are large gaps between the identified edges.

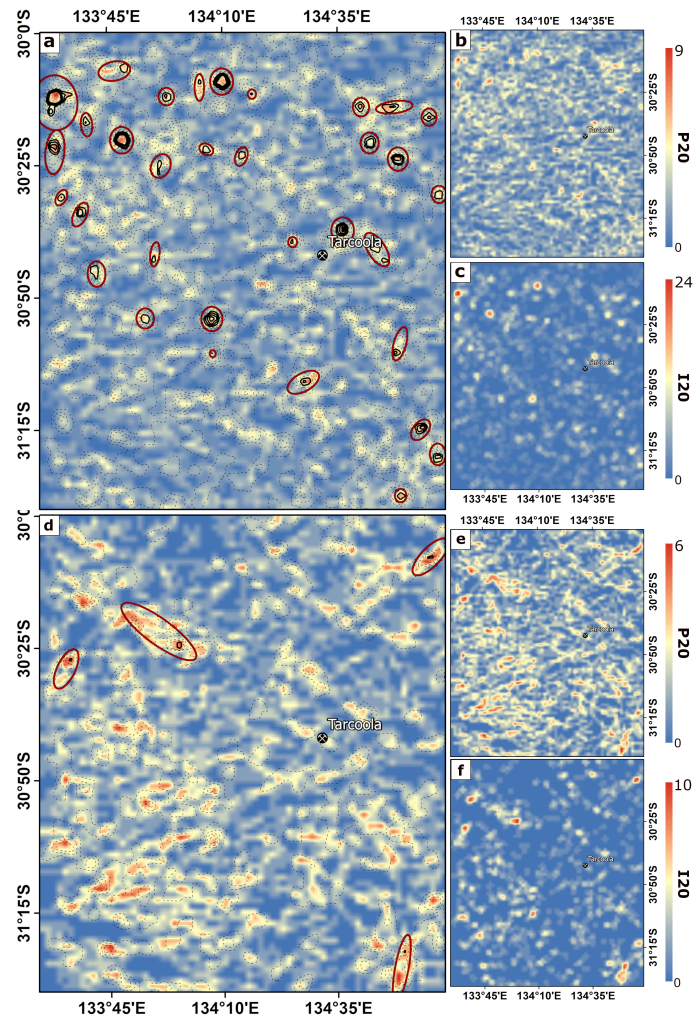


Figure 13. **a** Targeting map derived from “surface auto” and the “subsurface worms”. **b** Lineament density map (P20). **c** Intersection density map (I20). ~~33 potential targeting areas that are located at the margins of the study areas indicated by red ellipses.~~ **d** Targeting map derived from “surface auto” and the “subsurface auto”. **e** Lineament density map (P20). **f** Intersection density map (I20). ~~33 potential~~ Potential targeting areas that are located at the margins of the study areas domain indicated by red ellipses.

360 Geophysical lineaments are obtained from the gravity and magnetic data via automatic gradient extraction. The lineaments obtained from each geophysical dataset differ significantly in terms of length distribution and principal orientation (figure Figure 7). This could be attributed to different depths the upward continuation represent but is more likely to reflect the difference in resolution of the data and the physical properties each dataset is sensitive to. The gravity data yields lineaments that are attributed to major lithological boundaries pronounced by density contrasts. In the study area region the prominent

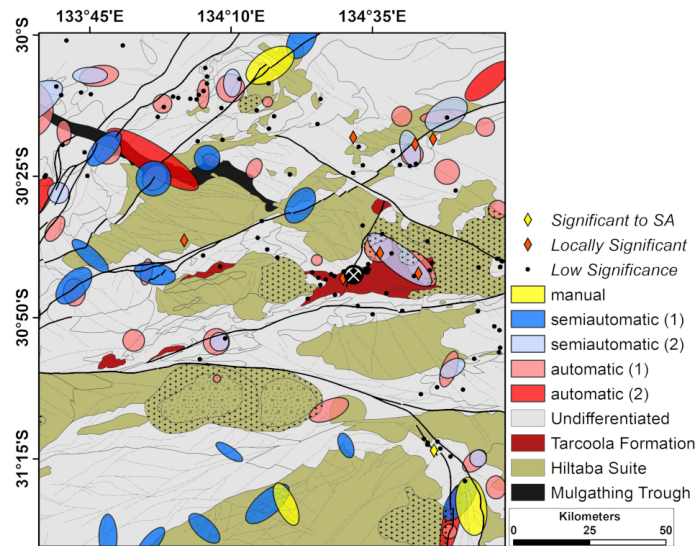


Figure 14. Geological and structural map showing the target areas identified by different combinations of lineament sets. In the legend manual refers to datasets that are divide solely through expert interpretation (figureFigure 11), semiautomatic represents datasets that are a combination of manually interpreted data (figureFigure 12) and automatic refers fully automatically extracted lineament data (figureFigure 13). Yellow and red diamonds indicate state-wide and locally significant mineral occurrences that were detected in drill cores. The black dots are mineralizations that are below economic significance. The legend for the geological and structural units is shown in figureFigure 2a.

boundaries are the margins of the domains that often coincide with large ~~crustal scale~~ crustal-scale shears and the Mulgathing
 365 Trough in the northwest (see figureFigures 2a& b). While the major crustal scale elements are traced by the lineaments extracted
 from the gravity data, the lineaments obtained from the magnetic data seem to reveal a more detailed picture of the subsurface
 structural framework. In addition to domain boundaries the magnetic lineaments also outline large intrusive bodies. In line
 with the the structural interpretation, three main directions are detectable for the magnetic “worms” (figures-2and Figures 2&5)
 but only two for the gravity “worms” (figureFigure 7). While the edge vector’s orientation and length distributions differ
 370 significantly, a reasonable correlation considering their locations is observable (Figure 7). In line with Foss et al. (2019), this
suggests that the mapping of gravity and magnetic contrasts with worms allows for correlating the magnetic and gravity field
anomalies. It must be pointed out that the mapped edges only act as approximate markers of the horizontal contrasts in density
or magnetisation (Foss et al., 2019).

We note that, the presence of magnetic remanence may alter the field anomaly, rendering the reduction-to-pole data we used
 375 less useful, however for our purposes of extracting lineaments from multiple datasets, the uncertainty in the degree of magnetic
remanence is of less concern than the uncertainty associated with the different automated and manual techniques in extracting
lineaments. We note that the magnetic and gravity datasets are of different resolution and in particular the resolution of the
gravity dataset is non-uniform. As the upward continuation acts similar to a low-pass filter the difference in resolution becomes
negligible.

380 Automatic lineament mapping performed with PCI Geomatica ([Geomatics, 2005](#)) yields a picture less consistent with the structural interpretation of the subsurface framework. While the automatically extracted gravity lineaments still outline some crustal-scale boundaries (especially evident for the graben structure in the [Northwestnorthwest](#)) the information associated with the automatically extracted geophysical lineaments is inferior compared to the information that can be obtained by automatic gradient extraction and the latter method should be favoured for the mapping of geophysical lineaments. The “worms” trace the
385 subsurface ~~picking-in-greater-detailed-in~~ [greater detail](#) and profound physical meaning can easily be attributed to the location of the lineaments as they are associated with strong lithology contrasts within the basement units. In contrast, the automatically extracted lineaments pick up a rough impression of the structural framework of the subsurface with only major elements detectable in the data, such as major shear zones and the Permian graben. We conclude that automatic gradient extraction is the superior technique for extracting geophysical lineaments from high resolution magnetic data and from gravity data with
390 variable resolution.

In section 5 we tested an approach that integrates surface and subsurface lineaments in a simple framework for exploration targeting that is based on identifying areas of high lineament density and high intersection density. The justification for this approach is that welling of hydrothermal fluids is often associated with structurally complex zones that comprise a high intersection density (e.g. Dimmen et al., 2017). Areas comprising an overall high density of discontinuities that are adjacent to
395 such zones of high structural complexity represent preferential exploration targets for hydrothermal mineralization. By combining surface and subsurface datasets we not only account for intersections in subsurface datasets but also for intersection of subsurface and surface lineaments. Such cross-strike discontinuities are an additional indicator for structurally complex zones and are taken into account in our workflow.

Especially in areas that comprise thick cover narrowing down potential exploration areas with an automatic or semi-
400 automatic method can significantly reduce cost for exploration. However, a great challenge is that surface impressions of basement hosted displacement structures can be offset compared to the location of the large-scale discontinuity in the basement. Furthermore, cross-strike features are likely associated with small scale shears that will not be traceable in potential field data that images basement structures. A reliable interpretation of surface and subsurface lineament sets is particularly challenging in an old crustal block such as the Gawler Craton and we consider the work presented here as an first attempt to
405 unify a lineament-based workflow for exploration targeting in such an environment.

Figure 14 shows the target areas identified by the different methods. At the current stage the areas identified as potential targets by different methods represent the most promising regions for follow up hydrogeochemical sampling for identifying mineral footprints ~~int-eh-in the~~ cover. These are probably [North-east-northeast](#) of the Tarcoola mining site at the margins of a large intrusive body, ~~the Northwestern part of the study area in the northwestern part~~ where the edge of Permian
410 graben is cross-cutting the Muckamippie Shear Zone, the region in the [Southeast-of-the-study-area-southeast](#) close to the Yarlbirinda Shear zone, and the area in the [Northeast-northeast](#) where mineral occurrences are reported along the Bulgunnia Shear Zone. ~~Geological~~ [Most of the targeting areas are located along the shear zones that form the borders of the geotectonic provinces. Giving that the area is part of the central Gawler gold province where mineralization are mainly shear-hosted Au \(Hand et al., 2007, and references therein\) this seems in-line with the existing](#) knowledge of the ~~area-can-region~~. In addition,

415 the targeting areas are often associated with the margins of the Hiltaba Suite (in particular in the southern part of Figure 14). Here it is important to note that the gold deposits in the central Gawler Craton exhibit some similar characteristics considering the mineralization style, as the gold is dominantly hosted in sulphide-poor structurally controlled quartz veins that seem to be spatially related to the Hiltabas Suite (Daly, 1993). We do not directly identify the deposit exploited at the Tarcoola mine but an area to the northeast that is situated along the margin of the Tarcoola formation (know host-rock (Pawley and Wilson, 2019)
420) that includes two known mineral occurrences of local significance.

Uncertainty in manual lineament mapping is directly related to the person's experience and the scale they are intending on mapping. The manual extraction of lineaments in this study focused on the regional linear trends (lineament greater than 1km). Addressing uncertainty for the automatic lineament mapping is hard and directly related to the resolution of the underlying datasets. In case of the automatic gradient extraction, the upward continuation can pose another source of uncertainty related
425 to the loss of detail that increases with higher upward continuations. For an example of how uncertainly in lineament mapping can be assesses statistically, we refer to Pawley et al. (2021).

We note that relatively few know mineralization coincides with the targets identified by the lineament analysis (Figure 14) and further research is needed to validate the reliability of the presented workflow. Geological knowledge of the area might help to reduce the number of false positives obtained by ~~lineament-based~~ lineament-based exploration targeting.

430 7 Conclusion

In this study we pointed out the differences between subsurface and surface lineaments mapped/extracted with different methods and from a variety of remotely sensed and geophysical data. We determined the principal orientations of each dataset by automatically deriving a best-fit Gaussian model of the data. Overall an E-W direction dominates in surface and subsurface datasets that likely represent the structural grain of the area. Surface lineaments manually mapped are clearly subjective and
435 can be biased due to preprocessing of the data. Compared to automatic extraction the main difference seems to be the scale on which the extracted ~~lineament-splay~~ lineaments play a role; the manual interpretation picks up regional scale trends whereas automatically extracted features represent smaller scale, locally relevant structures. We found that the automatic gradient extraction (“worming”) is superior to automatic lineament extraction performed with PCI Geomatica as the worms detect more details that are related to lithological and structural contrast. In this study we showed that automatic gradient extraction yields
440 geophysical lineaments associated with a profound geological meaning compared to automatically detected edges. In terms of the surface lineaments we conclude that the automatic extraction represents a method that picks up more local scale features and is likely well suited for well exposed areas. However, in areas that comprise a thick, reworked cover manual mapping of lineaments yield a more regional scale picture and seems to represent a reliable method.

An integrated workflow that utilizes surface and subsurface lineaments should include density per unit area and intersection
445 density per unit area. We found that a combination of geophysical lineaments derived by automatic gradient extraction combined with either manually or automatically mapped surface lineaments represents the most promising combination of data for exploration targeting. On one hand the gravity and magnetic worms will coincide with present lithological boundaries or

major structural features. To clearly state whether edges or lineaments observable in the surface data are correlated with crustal scale features such as shear zones requires further research. For efficiently combining intersection density and line density for targeting, spatial clustering algorithms might yield more reliable results compared to the simple approach presented in this study. The crucial parameters will be setting an appropriate threshold for intersection and line density for determining target areas.

Code and data availability. Datasets used in this study are freely available from the [South Australian Resources Information Gateway](#).

The automatic analysis of the lineament data was performed using parts of the open-source framework [FracG](#).

455 Data: <https://map.sarig.sa.gov.au/>.

Code: <https://bitbucket.csiro.au/scm/fracg/fracg.git>.

Author contributions. Ulrich Kelka wrote the manuscript with input from all authors, analysed the data, and developed the computational framework. Cercia Martinez wrote parts the manuscript, analysed data, performed the automatic extraction of lineaments, and revised the manuscript. Carmen Krapf devised the project, wrote parts of the manuscript, performed the manual lineaments extraction, and revised the manuscript. Stefan Westerlund developed the computational framework, helped with data visualization, and revised the manuscript. Ignacio Gonzalez-Alvarez devised the project, helped with data interpretation, and revised the manuscript. Mark Pawley wrote parts of the manuscript, performed the structural interpretation, helped with data interpretation, and revised the manuscript. Clive Foss performed the automatic gradient extraction for the geophysical datasets, helped with interpretation, and revised the manuscript.

465 *Competing interests.* The authors declare no competing interests and to have obtained permission to publish from CSIRO and the Geological Survey of South Australia.

Acknowledgements. The work performed is with support from the Geological Survey of South Australia, and the provision of high-resolution airborne geophysical and terrain data for Region 9A from the Gawler Craton Airborne Survey (GCAS) by Laz Katona and Jonathan Irvine. Carmen Krapf and Mark Pawley publish with the permission of the Director of the Geological Survey of South Australia.

470 Thanks to the Leadership team of the CSIRO Deep Earth Imaging Future Science Platform for supporting this collaboration with CSIRO's Mineral Resources Business Unit.

[We thank the two anonymous reviewers fro their thorough revision which helped to improve this manuscript.](#)

References

- Akaike, H.: Information theory and an extension of the maximum likelihood principle, in: Selected papers of hirotugu akaike, pp. 199–213, Springer, 1998.
- 475 Boucher, R.: Lineament Tectonic Data, South Australia, with a Focus on the Cooper Basin, Report Book 9739, 1997.
- Cowley, W., Katona, L., Gouthas, G., Hough, L., Menpes, S., and Foss, C.: Depth to crystalline basement data package: South Australia, Geoscience Data Package, 3, 2018.
- Daly, S.: Mineralization associated with the GRV and Hiltaba Suite granitoids: Earea Dam Goldfield, Glenloth Goldfield, Tarcoola Goldfield, The geology of South Australia, The Precambrian', (ed. Drexel, JF et al.), 1, 138–139, 1993.
- 480 Daly, S., Horn, C., and Fradd, W.: Tarcoola goldfield, Geology of the Mineral Deposits of Australia and Papua New Guinea: Australasian Institute of Mining and Metallurgy: Monograph, 14, 1049–1053, 1990.
- Dimmen, V., Rotevatn, A., Peacock, D. C., Nixon, C. W., and Nærland, K.: Quantifying structural controls on fluid flow: Insights from carbonate-hosted fault damage zones on the Maltese Islands, Journal of Structural Geology, 101, 43–57, 2017.
- Eisenlohr, B., Groves, D., and Partington, G.: Crustal-scale shear zones and their significance to Archaean gold mineralization in Western
485 Australia, Mineralium Deposita, 24, 1–8, 1989.
- Epuh, E., Okolie, C., Daramola, O., Ogunlade, F., Oyatayo, F., Akinnusi, S., and Emmanuel, E.: An integrated lineament extraction from satellite imagery and gravity anomaly maps for groundwater exploration in the Gongola basin, Remote Sensing Applications: Society and Environment, p. 100346, 2020.
- Fairclough, M., Schwarz, M., and Ferris, G.: Interpreted crystalline basement geology of the Gawler Craton, Adelaide, South Australian
490 Geological Survey, Special Map, 1: 1000000 series, 2003.
- Ferris, G. M., Schwarz, M. P., and Heithersay, P.: The geological framework, distribution and controls of Fe-oxide Cu-Au mineralisation in the Gawler Craton, South Australia. Part I–Geological and tectonic framework, Hydrothermal iron oxide copper-gold and related deposits: A global perspective, 2, 9–31, 2002.
- Florinsky, I. V.: Chapter 14 - Lineaments and Faults, in: Digital Terrain Analysis in Soil Science and Geology (Second Edition), edited by
495 Florinsky, I. V., pp. 353 – 376, Academic Press, second edition edn., <https://doi.org/https://doi.org/10.1016/B978-0-12-804632-6.00014-6>, <http://www.sciencedirect.com/science/article/pii/B9780128046326000146>, 2016.
- Foss, C., Gouthas, G., Wilson, T., Katona, L., and Heath, P.: PACE Copper Gawler Craton Airborne Geophysical Survey, Region 9A, Childara Enhanced geophysical imagery and magnetic source depth models, Adelaide, Report Book, 2019/00008, 2019.
- Fraser, G. L., Skirrow, R. G., Schmidt-Mumm, A., and Holm, O.: Mesoproterozoic Gold in the Central Gawler Craton, South Australia:
500 Geology, Alteration, Fluids, and Timing, Economic Geology, 102, 1511–1539, <https://doi.org/10.2113/gsecongeo.102.8.1511>, 2007.
- Gallant, J. C. and Dowling, T. I.: A multiresolution index of valley bottom flatness for mapping depositional areas, Water resources research, 39, 2003.
- Geomatics, P.: PCI Geomatica User Guide, 2005.
- González-Álvarez, I., Krapf, C., Fox, D., Noble, R., Reid, N., Verrall, M., Foss, C., Ibrahimi, T., Dutch, R., Jagodzinski, L., Cole, D.,
505 Lau, I., Robertson, J., and Pinchand, T.: Geochemical dispersion processes in deep cover and neotectonics in Coompana, Nullarbor plain, South Australia, vol. Paper 98, p. 5, Australian Exploration Geoscience Congress, 2-6 September, Perth, Western Australia, <https://2019.aegc.com.au/programdirectory/docs/98.pdf>, 2019.

- González-Álvarez, I., Krapf, C., Kelka, U., Martínez, C., Albrecht, T., Ibrahim, T., Pawley, M., Irvine, J., Petts, A., Gum, J., and Klump, J.: Linking cover and basement rocks in the Central Gawler Craton, South Australia, Report Book 2020/00029, p. 82, 2020.
- 510 Grauch, V. and Hudson, M. R.: Guides to understanding the aeromagnetic expression of faults in sedimentary basins: Lessons learned from the central Rio Grande rift, New Mexico, *Geosphere*, 3, 596–623, 2007.
- Gum, J.: Gold mineral systems of the Central Gawler Craton, *MESA Journal*, 91, 51–65, 2019.
- Hall, J.: Geophysical lineaments and deep continental structure, *Philosophical Transactions of the Royal Society of London. Series A, Mathematical and Physical Sciences*, 317, 33–44, 1986.
- 515 Hand, M., Reid, A., and Jagodzinski, L.: Tectonic framework and evolution of the Gawler Craton, Southern Australia, *Economic Geology*, 102, 1377–1395, 2007.
- Hashim, M., Ahmad, S., Johari, M. A. M., and Pour, A. B.: Automatic lineament extraction in a heavily vegetated region using Landsat Enhanced Thematic Mapper (ETM+) imagery, *Advances in Space Research*, 51, 874–890, 2013.
- Heath, P., Dhu, T., Reed, G., and Fairclough, M.: Geophysical modelling of the Gawler Province, SA—interpreting geophysics with geology, 520 *Exploration Geophysics*, 40, 342–351, 2009.
- Hibbert, J.: The geology of South Australia, Vol. 2, The Phanerozoic, vol. 54, chap. Mulgathing Trough, p. 78, 1995.
- Hoatson, D., Direen, N., Whitaker, A., Lane, R., Daly, S., Schwarz, M., and Davies, M.: Geophysical interpretation of the Harris Greenstone Belt, Gawler Craton, South Australia, 2002.
- Holden, D. J., Archibald, N. J., Boschetti, F., and Jessell, M. W.: Inferring geological structures using wavelet-based multiscale edge analysis 525 and forward models, *Exploration geophysics*, 31, 617–621, 2000.
- Hornby, P., Boschetti, F., and Horowitz, F.: Analysis of potential field data in the wavelet domain, *Geophysical Journal International*, 137, 175–196, 1999.
- Hou, B.: Palaeochannel studies related to the Harris Greenstone Belt, Gawler Craton, South Australia: architecture and evolution of the Kingoonya Palaeochannel System, Report Book, 2004/1, CRC LEME Open File Report 154, p. 40, 2004.
- 530 Hovgaard, J. and Grasty, R.: Reducing statistical noise in airborne gamma-ray data through spectral component analysis, in: *Proceedings of exploration*, vol. 97, pp. 753–764, 1997.
- Huang, Q., Kamenetsky, V. S., McPhie, J., Ehrig, K., Meffre, S., Maas, R., Thompson, J., Kamenetsky, M., Chambefort, I., Apukhtina, O., et al.: Neoproterozoic (ca. 820–830 Ma) mafic dykes at Olympic Dam, South Australia: links with the gairdner large igneous province, *Precambrian Research*, 271, 160–172, 2015.
- 535 Ilugbo, S. and Adebisi, A.: Intersection of lineaments for groundwater prospect analysis using satellite remotely sensed and aeromagnetic dataset around Ibodi, Southwestern Nigeria, *International Journal of Physical Sciences*, 12, 329–353, 2017.
- Katona, L.: Gridding of South Australian ground gravity data, using the Supervised Variable Density Method, 2017.
- Katona, L., Hutchens, M., and Foss, C.: Geological Survey of South Australia: An overview of the Gawler Craton Airborne Survey—new data and products, *Preview*, 2019, 24–26, 2019.
- 540 Kelka, U., Westerlund, S., and Peeters, L.: FracG – An automated framework for discontinuity network characterization, 2021.
- Kositcin, N.: Geodynamic synthesis of the Gawler Craton and Curnamona Province, *Geoscience Australia, Record*, 2010/27, 2010.
- Krapf, C. and Gonzalez-Alvarez, I.: It is rather flat out there. . . Regolith mapping depicting intricate landscape patterns and relationships to bedrock geology and structures under cover on the Nullarbor Plain, in: *Coompana Drilling and Geochemistry Workshop 2018 extended abstracts*, Report Book, vol. 19, pp. 12–17, 2018.

- 545 Krapf, C., Irvine, J., Cowley, W., and M, F.: Regolith Map of South Australia, 1:2 000 000 Series (1st edition), Geological Survey of South Australia, 2012.
- Langenheim, V. and Hildenbrand, T.: Commerce geophysical lineament—Its source, geometry, and relation to the Reelfoot rift and New Madrid seismic zone, *Geological Society of America Bulletin*, 109, 580–595, 1997.
- Masoud, A. and Koike, K.: Applicability of computer-aided comprehensive tool (LINDA: LINEament Detection and Analysis) and shaded
550 digital elevation model for characterizing and interpreting morphotectonic features from lineaments, *Computers & Geosciences*, 106, 89 – 100, <https://doi.org/https://doi.org/10.1016/j.cageo.2017.06.006>, <http://www.sciencedirect.com/science/article/pii/S0098300417300833>, 2017.
- Mohammadpour, M., Bahroudi, A., and Abedi, M.: Automatic Lineament Extraction Method in Mineral Exploration Using CANNY Algorithm and Hough Transform, *Geotectonics*, 54, 366–382, 2020.
- 555 Motta, J., Betts, P., de Souza Filho, C., Thiel, S., Curtis, S., and Armit, R.: Proxies for basement structure and its implications for Mesoproterozoic metallogenic provinces in the Gawler Craton, *Journal of Geophysical Research: Solid Earth*, 124, 3088–3104, 2019.
- Nelson, R.: The Mulgathing Trough. South Australia, *Quarterly Geological Notes*, 58, 5–8, 1976.
- O’Driscoll, E.: Observations of the lineament-ore relation, *Philosophical Transactions of the Royal Society of London. Series A, Mathematical and Physical Sciences*, 317, 195–218, 1986.
- 560 Pandey, P. and Sharma, L.: Image Processing Techniques Applied to Satellite Data for Extracting Lineaments Using PCI Geomatica and Their Morphotectonic Interpretation in the Parts of Northwestern Himalayan Frontal Thrust, *Journal of the Indian Society of Remote Sensing*, 47, 809–820, 2019.
- Pawley, M. and Wilson, T.: Solid geology interpretation of the GCAS 9A area, South Australia’s 4D Geodynamic and Metallogenic Evolution, 2019.
- 565 Pawley, M., Irvine, J., Melville, A., Krapf, C., Thiel, S., Gonzalez-Alvarez, I., Kelka, U., and Martinez, C.: Automated lineament analysis of the Gairdner Dolerite dyke swarm of the Gawler Craton, (*in press*), 2021.
- Raghavan, V., Wadatsumi, K., and Masumoto, S.: Automatic extraction of lineament information from satellite images using digital elevation data, *Nonrenewable Resources*, 2, 148–155, 1993.
- Reid, A. J., Jagodzinski, E. A., Fraser, G. L., and Pawley, M. J.: SHRIMP U–Pb zircon age constraints on the tectonics of the
570 Neoproterozoic to early Paleoproterozoic transition within the Mulgathing Complex, Gawler Craton, South Australia, *Precambrian Research*, 250, 27 – 49, <https://doi.org/https://doi.org/10.1016/j.precamres.2014.05.013>, <http://www.sciencedirect.com/science/article/pii/S0301926814001776>, 2014.
- Sanderson, D. J., Peacock, D. C., Nixon, C. W., and Rotevatn, A.: Graph theory and the analysis of fracture networks, *Journal of Structural Geology*, 125, 155–165, 2019.
- 575 Scheiber, T., Fredin, O., Viola, G., Jarna, A., Gasser, D., and Łapińska-Viola, R.: Manual extraction of bedrock lineaments from high-resolution LiDAR data: methodological bias and human perception, *GFF*, 137, 362–372, 2015.
- Schmidt, P. W. and Clark, D.: Magnetic characteristics of the Hiltaba Suite Granitoids and Volcanics: Late Devonian overprinting and related thermal history of the Gawler Craton, *Australian Journal of Earth Sciences*, 58, 361–374, 2011.
- Sheard, M., Keeling, J., Lintern, M., Hou, B., McQueen, K., and Hill, S.: A guide for mineral exploration through the regolith of the central
580 Gawler Craton, South Australia, CRC LEME, 2008.

- Sheikhrahimi, A., Pour, A. B., Pradhan, B., and Zoheir, B.: Mapping hydrothermal alteration zones and lineaments associated with orogenic gold mineralization using ASTER data: A case study from the Sanandaj-Sirjan Zone, Iran, *Advances in Space Research*, 63, 3315–3332, 2019.
- Shrivakshan, G. and Chandrasekar, C.: A comparison of various edge detection techniques used in image processing, *International Journal of Computer Science Issues (IJCSI)*, 9, 269, 2012.
- 585 Skirrow, R. G., Bastrakov, E. N., Barovich, K., Fraser, G. L., Creaser, R. A., Fanning, C. M., Raymond, O. L., and Davidson, G. J.: Timing of Iron Oxide Cu-Au-(U) Hydrothermal Activity and Nd Isotope Constraints on Metal Sources in the Gawler Craton, South Australia, *Economic Geology*, 102, 1441–1470, <https://doi.org/10.2113/gsecongeo.102.8.1441>, <https://doi.org/10.2113/gsecongeo.102.8.1441>, 2007.
- Swain, G., Hand, M., Teasdale, J., Rutherford, L., and Clark, C.: Age constraints on terrane-scale shear zones in the Gawler Craton, southern 590 Australia, *Precambrian Research*, 139, 164–180, 2005.
- Vassilas, N., Perantonis, S., Charou, E., Tsenoglou, T., Stefouli, M., and Varoufakis, S.: Delineation of lineaments from satellite data based on efficient neural network and pattern recognition techniques, in: *Proc. Second Hellenic Conference on AI*, pp. 355–365, Citeseer, 2002.
- Wang, J.: LINDA—a system for automated linear feature detection and analysis, *Canadian Journal of Remote Sensing*, 19, 009–021, 1993.
- Wheeler, R. L.: Cross-strike structural discontinuities: possible exploration tool for natural gas in Appalachian overthrust belt, *AAPG Bulletin*, 64, 2166–2178, 1980.
- 595 Wilson, T., Pawley, M., and Verco, R.: Structural geology and GCAS: implications for gold systems in the central Gawler Craton, in: *Geological Survey of South Australia Discovery Day 2018: presentation abstracts and posters*, edited by A.R., R., vol. Report Book, 2018/00034, pp. 9–14, Government of South Australia. Department for Energy and Mining, 2018.
- Witt, W., Hickman, A., Townsend, D., and Preston, W.: Mineral Potential of the Archaean Pilbara and Yilgarn Cratons, Western Australia, 600 *AGSO Journal of Australian Geology and Geophysics*, 17, 201–222, 1998.
- Xu, J., Wen, X., Zhang, H., Luo, D., Li, J., Xu, L., and Yu, M.: Automatic extraction of lineaments based on wavelet edge detection and aided tracking by hillshade, *Advances in Space Research*, 65, 506–517, 2020.
- Zhang, L., Wu, J., Hao, T., and Wang, J.: Automatic lineament extraction from potential-field images using the Radon transform and gradient calculation, *Geophysics*, 71, J31–J40, 2006.