

Miocene high elevation ~~and high relief~~ in the Central Alps

Emilija Krsnik^{1,2}, Katharina Methner^{1,5}, Marion Campani¹, Svetlana Botsyun³, Sebastian G. Mutz³, Todd A. Ehlers³, Oliver Kempf⁴, Jens Fiebig², Fritz Schlunegger⁶, Andreas Mulch^{1,2}

¹Senckenberg Biodiversity and Climate Research Centre (SBIK-F), Frankfurt (Main), 60325, Germany

5 ²Institute of Geosciences, Goethe University Frankfurt, Frankfurt (Main), 60438, Germany

³Department of Geosciences, University of Tübingen, 72076 Tübingen, Germany

⁴Federal Office of Topography swisstopo, Geologische Landesaufnahme, Wabern, 3084, Switzerland

⁵Department of Geological Sciences, Stanford University, CA 94305, USA

⁶Institute of Geological Sciences, University of Bern, Bern, 3012, Switzerland

10 *Correspondence to:* Emilija Krsnik (emilija.krsnik@senckenberg.de)

Abstract. Reconstructing Oligocene-Miocene paleoelevation contributes to our understanding of the evolutionary history of the European Alps and sheds light on geodynamic and Earth's surface processes involved in the development of Alpine topography. Despite being one of the most intensively explored mountain ranges worldwide, constraints on the elevation history of the European Alps, ~~however,~~ remain scarce. Here we present stable and clumped isotope ~~geochemistry~~ measurements to provide a new paleoelevation estimate for the mid-Miocene (~14.5 Ma) European Central Alps. We apply stable isotope δ - δ paleoaltimetry on near sea-level pedogenic carbonate oxygen isotope ($\delta^{18}\text{O}$) records from the Northern Alpine Foreland Basin (Swiss Molasse Basin) and high-Alpine phyllosilicate hydrogen isotope (δD) records from the Simplon Fault Zone (Swiss Alps). We further explore Miocene paleoclimate and paleoenvironmental conditions in the Swiss Molasse Basin through carbonate stable ($\delta^{18}\text{O}$, $\delta^{13}\text{C}$) and clumped (Δ_{47}) isotope data from three foreland basin sections in different alluvial megafan settings (proximal, mid-fan, and distal). Combined pedogenic carbonate $\delta^{18}\text{O}$ values and Δ_{47} temperatures ($30 \pm 5^\circ\text{C}$) yield a near sea-level precipitation $\delta^{18}\text{O}_w$ value of $-5.8 \pm 0.2\%$ and in conjunction with the high-Alpine phyllosilicate δD ~~value of $-14.6 \pm 0.3\%$ record~~ suggest that the region surrounding the Simplon Fault Zone attained surface elevations of >4000 m no later than the mid-Miocene. Our near sea-level $\delta^{18}\text{O}_w$ estimate is supported by paleoclimate (iGCM ~~Echam5~~ECHAM5-wiso) modeled $\delta^{18}\text{O}$ values, which vary between -4.2 and -7.6% for the Northern Alpine Foreland Basin.

1 Introduction

Past elevations of mountain ranges provide insight into the coupled climatic and geodynamic processes that shape orogenic belts. The European Alps are one of the most intensively investigated mountain belts worldwide, and yet there are surprisingly few studies addressing its surface uplift history. The topographic evolution of continent-continent collision zones such as the European Alps is mainly controlled by isostatic compensation of crustal and/or lithospheric deformation caused by plate convergence (e.g. Beaumont et al., 1996; Schmid et al., 1996; Willett et al., 1993). Various mechanisms may

35 have contributed to the increase of post-collisional Alpine surface elevation. These include horizontal shortening, thickening of the continental crust, and following isostatic adjustment of the lithosphere (e.g. Pfiffner et al., 2002), mantle scale uplift caused by slab breakoff (e.g. Lippitsch, 2003), slab rollback and associated delamination within the lithosphere (Kissling and Schlunegger, 2018; Schlunegger and Kissling, 2015) or asthenospheric upwelling (e.g. Lyon-Caen and Molnar, 1989). At the same time climate change will impact topography, e.g. through accelerated erosional unroofing forcing isostatic rebound of the unloaded lithosphere (Cederbom et al., 2004; Champagnac et al., 2009; Mey et al., 2016). Despite being a prime example of continent-continent collision following protracted convergence and subduction of oceanic lithosphere (e.g. Frisch, 1979; Froitzheim et al., 2008; Schmid et al., 1996; Stampfli et al., 1998), recent studies in the Central European Alps suggest that 40 compressional tectonics may not be the sole driver for surface uplift and thus for the formation of Alpine topography (e.g. Kissling and Schlunegger, 2018; Schlunegger and Kissling, 2015). Convergence between the European and the Adriatic plates commenced in the late Cretaceous and led to the subsequent collision between both continental plates at ca. 35 Ma (Schlunegger and Kissling, 2015). Postcollisional slab breakoff (at ca. 32 Ma), and continuing slab rollback of the subducting lithosphere beneath the Alpine arc associated with lithospheric delamination, may have contributed to the rise of 45 topography (Kissling and Schlunegger, 2018). ~~The European Alps are one of the most intensively investigated mountain belts worldwide, and yet there are surprisingly few studies addressing its surface uplift history.~~

Previous studies of the Central Alps suggested a wide range of Oligocene to Miocene paleoelevation estimates. (Schlunegger and Kissling, (2015) inferred possible mean paleoelevations of 1900 ± 1000 m for the post-20 Ma Alpine drainage divide from spacing and cross-sectional widths of alluvial megafan conglomerates deposited in the Northern Alpine Foreland Basin. 50 Stable isotope based paleoelevation studies suggested paleoaltitudes of 2300 ± 650 m obtained from oxygen isotope and $^{87}\text{Sr}/^{86}\text{Sr}$ compositions of shark teeth's from Early Miocene foreland basin deposits (20.3–17.6 Ma; (Kocsis et al., 2007), and of $2850 + 800/-600$ m as inferred from oxygen isotopic composition of precipitation for the Middle Miocene (Campani et al., 2012). Summit (or maximum) elevations have been estimated at 2500–3000 m for large parts of Western and Central Alps for the Middle Miocene based on combined evidences from sediment budget curves, thermochronology, and sediment facies 55 (Kuhlemann, 2007). Highest peak elevations have been provided by (Sharp et al., (2005) who suggested at least 5000 m based on stable isotope compositions of minerals and fluid inclusions from fissures in the Swiss Alps, and by (Jäger and Hantke, (1983, 1984) who inferred >5000 m for the Swiss Bergell mountains at the Oligocene/Miocene boundary based on large erratic boulders found at great distances from their place of origin.

~~Previous studies of the Central Alps suggested Oligocene to Miocene paleoelevation estimates ranging from mean elevations 60 of 1900 ± 1000 m (Miocene; Schlunegger and Kissling, 2015), and 2300 ± 650 m (early Miocene; Kocsis et al., 2007), to $2850 + 800/-600$ m (middle Miocene; Campani et al., 2012). Summit (or maximum) elevations have previously been estimated at 2500–3000 m (Miocene; Kuhlemann, 2007) to at least 5000 m (middle Miocene; Sharp et al., 2005) and potentially >5000 m (Oligocene/Miocene boundary; Jäger and Hantke, 1983, 1984). These estimates, however, are in contrast to geomorphologic and sediment budget based modeling studies suggesting that present day elevations of the Alps 65 were attained only at ca. 5–6 Ma while Miocene topography was still much lower (Hergarten et al., 2010).~~

In this study, we complement previous work by applying stable isotope (δ - δ) paleoaltimetry (Mulch, 2016) using authigenic soil carbonates from the near sea-level Northern Alpine Foreland Basin (NAFB) and contrast these with hydrogen isotope data from syntectonic high-Alpine fault zone silicates from the Simplon Fault Zone (SFZ). Our application of Miocene stable isotope paleoaltimetry data builds upon (and revises) former stable isotope paleoaltimetry estimates (Campani et al., 2012) (e.g. ~~Campani et al., 2012; Kocsis et al., 2007~~) as combined analysis of well-dated mid-Miocene sediments (e.g. Kälän and Kempf, 2009; Kempf and Matter, 1999; Schlunegger et al., 1996) along and across two Miocene Alpine foreland megafans (Napf, Hörnli) with clumped isotope (Δ_{47}) thermometry data permits refining the soil carbonate-based near sea-level $\delta^{18}\text{O}$ estimate of meteoric water ($\delta^{18}\text{O}_w$).

$\delta^{18}\text{O}_w$ values used in paleoelevation reconstructions can be affected by paleoclimate change (Botsyun et al., 2016, 2019; Botsyun and Ehlers, 2021; Ehlers and Poulsen, 2009; Insel et al., 2012; Mulch, 2016; Poulsen et al., 2010). For instance, the sensitivity of $\delta^{18}\text{O}_w$ to regional, global, and topographic variations in paleotemperature, environmental conditions of an air mass prior to orographic ascent, evapotranspiration, water vapor recycling, and changes in vapor source has been shown to introduce uncertainties in stable isotope based elevation reconstructions (e.g. Mulch, 2016; Botsyun et al., 2020, Botsyun and Ehlers 2021). In particular, isotopic changes over continental Europe could be related to a variety of factors such as: declining $p\text{CO}_2$ levels (Pagani et al., 1999), variable ocean circulation and sea surface temperatures (Flower and Kennett, 1994; Wright et al., 1992), sea-level fluctuations (Foster and Rohling, 2013), paleogeographic changes (Herold et al., 2008; Poblete et al., 2021), and to other processes affecting $\delta^{18}\text{O}_w$ (Botsyun et al., 2019; Poulsen et al., 2007; Risi et al., 2008; Roe et al., 2016; Sewall and Fricke, 2013; Sturm et al., 2010). We thus compare our newly refined near sea-level $\delta^{18}\text{O}$ estimate with paleoclimate simulations from the isotope-enabled ECHAM5-wiso atmospheric general circulation model (iGCM) which predicts changes in $\delta^{18}\text{O}$ of precipitation.

2 Study area

2.1 The Alps and the Swiss Molasse Basin

The European Alps formed as a result of the northward drift of the Adriatic microplate and the associated formation of a south-directed subduction zone beneath the Tethys Ocean. The Late Cretaceous to Paleogene closure of the Alpine Tethys led to the collision between the Adria and Europe continental plates (~~(Handy et al., 2010)~~ Handy et al., 2010; Schmid et al., 1996; Stampfli et al., 1998). Subsequent post-collisional convergence resulted in overthrusting and stacking of nappe sheets (e.g. Schmid et al., 1996). The Northern Alpine Foreland Basin ~~NAFB~~ formed due to elastic downwarping of the European lithosphere resulting from subduction slab load and topographic load and accommodated eroded material from the N-ward propagating Alpine thrust front (Fig. 1; e.g. Matter et al., 1980; Schlunegger and Kissling, 2015). The Oligo-Miocene Swiss Molasse Basin (SMB) represents the central part of the Northern Alpine Foreland Basin ~~NAFB~~ (Fig. 1). Deposition of several km-thick sequences of basin fill in the Swiss Molasse Basin ~~SMB~~ started in the Early Oligocene (e.g. Pfiffner, 1986; Kempf et al., 1997; Kempf et al., 1999) and continued until late Miocene/early Pliocene when basin inversion led to erosion

of mMolasse sediments (Cederbom et al., 2004, 2011; Mazurek et al., 2006). During this period deposition changed twice from shallow marine to terrestrial resulting in two regressive shallowing-, coarsening and thickening-upward megacycles.

100 The Swiss Molasse BasinSMB is, therefore, divided into four lithostratigraphic units: the Lower Marine Molasse (“Untere Meeresmolasse”, UMM), the Lower Freshwater Molasse (“Untere Süßwassermolasse”, USM), the Upper Marine Molasse (“Obere Meeresmolasse”, OMM) and the Upper Freshwater Molasse (“Obere Süßwassermolasse”, OSM) (e.g. Matter et al., 1980; Schlunegger et al., 1996).

Advancing surface uplift of the Alpine mountain belt led to formation of extended drainage networks and alluvial megafans
105 since ca. 32–30 Ma (Kempf et al., 1999; Kuhlemann and Kempf, 2002; Schlunegger et al., 1997) that formed large dispersal systems with cross-sectional widths of nearly 30 km and corresponding stream lengths of >150 km (Schlunegger and Kissling, 2015). A reduction in sediment flux (Kuhlemann et al., 2001) paired with ongoing basin subsidence resulted in a shift from basin overfill (Lower Freshwater Molasse) to underfill (Upper Marine Molasse) at 20 Ma (Garefalakis and Schlunegger, 2019). A subsequent increase in erosional flux (Kuhlemann et al., 2001) together with a lowering of the
110 eustatic sea level (Garefalakis and Schlunegger, 2019) enabled propagation of the fan deltas towards the basin center and led to a shift to an overfilled basin again at ca. 17 Ma, and therefore to the establishment of terrestrial OSM sedimentation by that time (e.g. Kuhlemann and Kempf, 2002).

2.2 Alluvial megafans of the OSM

The Napf and Hörnli megafans (Fig. 1B), among other fan systems, formed at the Alpine front and merged into a basin axial
115 drainage system in the central part of the Swiss Molasse BasinSMB. Deposition of the Napf and Hörnli megafans initiated during the OMM (Kuhlemann and Kempf, 2002), or possibly earlier (Garefalakis and Schlunegger, 2019; Schlunegger and Kissling, 2015). Persistent progradation and accumulation of debris formed subaerial deltas and the relief of the SMB megafans may have reached several hundreds of metres above base level depending on distance to the apex and slope geometry (Garefalakis and Schlunegger, 2018). During the youngest depositional phase (OSM; ca. 17–11 Ma) sediments of
120 SMB megafans ~~were~~ predominantly composed of amalgamated conglomerate and sandstone packages with mudstone interlayers at the basin margin and alternations of finer grained sandstone beds, mudstones, and marls in the basin center. Sediments of the Hörnli megafan document a short-lived marine ingressions at ca. 18.5–18.0 Ma (Bolliger et al., 1995; Keller, 1989), whereas deposits of the center of the Napf megafan show no evidence of marine sedimentation (Schlunegger et al., 1996). However, marine sedimentation between the megafan deltas continued for at least 1 Myr after the transition from
125 marine OMM to terrestrial OSM within fan deltas (Schlunegger et al., 1996), resulting in lateral facies and elevation changes. As such, the sedimentary sections presented here are in close proximity to the retreating Molasse Sea, yet, depending on their fan position may have developed up to several hundred meters above mid-Miocene sea level. Here we present oxygen ($\delta^{18}\text{O}$), carbon ($\delta^{13}\text{C}$), and clumped (Δ_{47}) isotope data from three fully terrestrial SMB sections (Fontannen, Jona, and Aabach) to explore the change in environmental conditions in proximal to distal depositional settings in the
130 Miocene Napf and Hörnli megafans (Fig. 1B), and we relate these data to published stable oxygen isotope data in the

evolving Alps (Campani et al., 2012) to update the paleoelevation estimate by Campani et al. (2012) and previous authors for that time.

2.3 Sampled sections

135 Our study of Miocene paleosol carbonate takes advantage of numerous pedogenic soil horizons embedded in a detailed geochronologic framework determined from previous studies of paleomagnetostratigraphy (Kälin and Kempf, 2009; Kempf et al., 1997; Kempf and Matter, 1999; Schlunegger et al., 1996), radiometric age data of volcanic ash layers (Gubler et al., 1992; Schmieder et al., 2018), and mammal biostratigraphy (e.g. Bolliger, 1992; Kälin, 1997). The local paleomagnetic sections were correlated to the astronomically -tuned Neogene timescale (ATNTS2012) of Hilgen et al. (2012).

140 The almost 1000 m-thick Fontannen section is situated in the proximal part of the Napf alluvial megafan and covers an age range of 17.6–13.3 Ma (Fig. 1B). The section is composed of alternating massive conglomerates, sandstones and silty mudstones of the OSM (Fig. 32). The base of the section (0 m to ~100 m) is composed of the Schüpferegg Conglomerate, which represents the terrestrial equivalent of the marine Luzern and St. Gallen Formations of the OMM (Garefalakis and Schlunegger, 2019; Keller, 1989). The Schüpferegg Conglomerate is overlain by the Napf Beds, which mainly comprise
145 conglomerates and silty mudstones (Schlunegger et al., 1996). Massive conglomerates of up to 100 m thickness dominate the stratigraphy in this region and reveal the proximal position of the section within the alluvial fan (Fig. 2A, 3). Well-developed paleosols with carbonate nodules occur in mud-/siltstone interlayered between the conglomerate beds. Pedogenic horizons are up to 50 cm thick and occasionally show mottling in grey, purple, and yellow. Age constraints of the Fontannen section are given by deposits associated with the Ries meteorite impact (14.81 ± 0.02 Ma; Schmieder et al., 2018) and by ~~two-four~~
150 mammal fauna zones (MN ~~5/6 and MN 54~~, MN 5, and MN 6; Kälin, 1997)-. We inferred pedogenic carbonate ages based on the local magnetostratigraphy (Schlunegger et al., 1996; Kempf et al., 1997; Fig. 2 and Fig. S11 in Supplementary Material). Carbonate $\delta^{18}\text{O}$ and $\delta^{13}\text{C}$ data of the Fontannen section has previously been published in Campani et al. (2012), and Δ_{47} temperatures have been provided by Methner et al. (2020; Table SI6 in suppl. Material).

155 The 750 m-thick Jona section covers an age range of 16.8–13.7 Ma and is located in the mid-fan to proximal part of the Hörnli alluvial megafan (Fig. 1B). It is mainly composed of alternating conglomerates and mudstones (Kälin and Kempf, 2009). Similar to the Fontannen section, the stratigraphy of the Jona section is dominated by frequent conglomerate horizons. Almost all outcrops reveal up to several tens of m-thick conglomerates overlaying grey sandstones and marls, the latter characterized by pedogenic overprint (Fig. 2B, 3). Pedogenic features of the Jona section include carbonate nodules,
160 calcified roots, and occasionally strong mottling with grey, yellow and purple colors. In contrast to the proximal Fontannen section, paleosol horizons in the Jona section formed more frequently and are thicker. The up to 2 m-thick paleosols are well developed and contain abundant carbonate nodules. The section is dated through a projection of the Künsnacht bentonite (14.91 ± 0.09 Ma) to a level situated at ~710 m of the Jona section and through seven mammal sites comprising faunal zones

MN 4b, MN 5 and MN 6 (Bolliger, 1992). Furthermore, the Hüllistein conglomerate at ~~~500–280~~ m (16 Ma; Kempf et al., 1997) was deposited during a fan-wide mass flow event and serves as an important regional marker horizon. It allows a lateral correlation with the distal counterpart Meilen limestone in the Aabach section 20 km further to the west (e.g. Bürgisser, 1984; Kempf and Matter, 1999). Our carbonate nodule age constraints are based on the magnetostratigraphic study of Kempf et al. (1997).

The 352 m-thick Aabach section covers an age range of 17.3–14.8 Ma (Kempf and Matter, 1999). These sediments were deposited in the distal part of the Hörnli alluvial megafan (Fig. 1B; Kälin and Kempf, 2009) and are characterised by thick mudstones, reflecting typical overbank deposits on floodplains. The lithostratigraphic units consist of alternating sequences of mudstones, marls, siltstones, and fine-grained sandstones (Fig. 32). The typical marl in this section is greyish or yellowish and shows strong evidence of pedogenic overprinting, including frequent mottling in intense purple and yellow colors, root traces and hackly structures resulting from bioturbation and/or shrink-swell features (slick-and-slide structures) resulting from seasonal wetting and drying (Fig. 2C3C). Pedogenic horizons often contain abundant carbonate nodules or show caliche formation. The Aabach section reveals the highest frequency of paleosol occurrence of all three SMB sections with pedogenic overprint in almost all mudstones and marls. Furthermore, the characteristic lack of conglomerates and the presence of lacustrine marls and the Meilen limestone at ~170 m indicate that this section was deposited on a floodplain of the distal part of the alluvial megafan. We inferred carbonate nodule ages based on the local magnetostratigraphy of (Kempf and Matter, 1999). Age constraints rely on ~~r~~Radiometric ages of the projected Künsnacht (14.91 ± 0.09 Ma) and Urdorf bentonites (15.27 ± 0.12 Ma), and five mammal sites (all in mammal faunal zone MN 5; Bolliger, 1992) allowed for correlation with the Neogene polarity timescale (Hilgen et al., 2012).

3 Proxies and methods

3.1 Sampling strategy

Miocene ~~SMB~~ (Swiss Molasse Basin) paleosols show typical characteristics of pedogenic overprinting ~~in former B horizons~~ including mottling, root traces and different stages of soil carbonate development (Fig. 23). For all analysed sections we targeted well-developed undisturbed paleosols with micritic pedogenic carbonate nodules typically 1–5 cm in diameter (Fig. 23). Carbonate-bearing horizons occurred mainly in sequences of stacked paleosols or were overlain by sandstones or conglomerates separated by a sharp erosional contact, indicating that the top of the soil profile was truncated. In total, we collected 383 pedogenic carbonate nodules from 140 layers ~~of former B-horizons of the three sections~~ in different alluvial megafan settings (proximal, mid-fan, and distal) for analysis of $\delta^{18}\text{O}$, $\delta^{13}\text{C}$ and Δ_{47} . Samples were collected along small rivers and from well exposed sections of the SMB alluvial deposits. We compiled coherent age models for all three sections with a resolution of ≤ 100 kyr and an error of ± 80 kyr–150 kyr for individual paleosol horizons based on

paleomagnetostigraphy studies (Kälin and Kempf, 2009; Kempf et al., 1997; Kempf and Matter, 1999; Schlunegger et al., 1996). Errors on the age models are based on uncertainties of sample placement within the stratigraphic section and were calculated for the period of lowest sedimentation rate, thus representing the maximum error. Details on the determined age model and error calculation are given in the Supplementary Material.

200 3.2 Carbonate stable isotope ($\delta^{18}\text{O}$, $\delta^{13}\text{C}$) analyses and Δ_{47} paleothermometry

$\delta^{18}\text{O}$ and $\delta^{13}\text{C}$ data were obtained from pedogenic carbonate nodules in well-developed paleosol horizons. Pedogenic carbonate nodules typically form in soils of arid to sub-humid zones due to chemical precipitation from supersaturated soil water (Cerling, 1984; Cerling and Quade, 1993). Their $\delta^{18}\text{O}$ and $\delta^{13}\text{C}$ values are controlled by $\delta^{18}\text{O}$ of meteoric (soil) water and soil CO_2 , respectively, and are sensitive to changes in temperature, water availability, soil respiration rates and the proportions of $\text{C}_3:\text{C}_4$ biomass of local vegetation (Cerling, 1984). Carbonate clumped isotope (Δ_{47}) paleothermometry is based on the measurement of the abundance of the rare isotopes ^{13}C and ^{18}O in the carbonate mineral lattice (Eiler, 2007; Ghosh et al., 2006). The effect of “clumping” of rare isotopes is temperature-dependent and unrelated to the $\delta^{18}\text{O}$ value of the water from which the carbonate formed. Pedogenic carbonates have shown to reliably record primary Δ_{47} values in the SMB sections (Methner et al., 2020). We, therefore, determined Δ_{47} paleotemperatures for each of the three investigated sections ($n=5$ samples for Fontannen, Jona, and Aabach) to calculate $\delta^{18}\text{O}_w$ values of meteoric waters. Both, clumped isotope (Δ_{47}), and $\delta^{18}\text{O}$ and $\delta^{13}\text{C}$ analyses were performed at the Joint Goethe University-Senckenberg BiK-F Stable Isotope Facility (Frankfurt, Germany). Pedogenic carbonate oxygen and carbon isotope values are reported using standard δ -permil notation relative to VSMOW and VPDB, respectively. Analytical details can be found in the Supplementary Material.

3.3 Stable isotope paleoaltimetry

215 Stable isotope paleoaltimetry relies on the systematic decrease of $\delta^{18}\text{O}$ and δD values of meteoric water with increasing elevation on the windward side of an orographic barrier (e.g. Currie et al., 2005; Poage and Chamberlain, 2001; Rowley and Garzzone, 2007; Siegenthaler and Oeschger, 1980). ~~With increasing altitude a~~ ascending air masses undergo adiabatic cooling and rain out with increasing altitude, which leads to fractionation-driven depletion of ^{18}O in the residual water vapour. ~~With progressive rainout the~~ The rainfall becomes increasingly depleted in ^{18}O . with progressive rainout. Even though altitudinal lapse rates of $\delta^{18}\text{O}$ and δD in precipitation may not necessarily be constant through time and space (Botsyun et al., 2020; Ehlers and Poulsen, 2009; Poulsen et al., 2010), averaged global oxygen isotope lapse rates show a systematic decrease in $\delta^{18}\text{O}$ of meteoric water with increasing elevation (e.g. Poage and Chamberlain, 2001). The present-day Alpine $\delta^{18}\text{O}$ lapse rate averages $-0.20\text{‰}/100\text{ m}$ (Campani et al., 2012). The comparison of the $\delta^{18}\text{O}$ and/or δD values of meteoric waters from age-equivalent low-elevation and high-elevation sites (δ - δ) strengthens paleoelevation reconstructions by reducing the impact of long-term climate change on the isotope proxy records (Mulch, 2016; Mulch and Chamberlain, 2018). In this study we evaluate different low-elevation $\delta^{18}\text{O}$ records from foreland basin paleosols and compare them with

an age-equivalent high-elevation δD record from the Simplon Fault Zone (~~SFZ~~) published in Campani et al. (2012). We then relate the difference in $\delta^{18}\text{O}$ of meteoric water between these sites to the difference in paleoelevation and update the previous interpretation presented by Campani et al. (2012) (Fig. 4). Normal fault and detachment systems that served as pathways for meteoric water, which percolated along such fault zones (e.g. Mulch and Chamberlain, 2007) represent valuable archives for high elevation rainfall $\delta^{18}\text{O}$ (or δD) values. Hydrous silicate minerals that formed synkinematically during deformation within these fault systems undergo isotopic exchange with meteoric-derived fluids. The δD values of such synkinematic hydrous minerals hence record the δD of the infiltrating meteoric waters and can therefore be used to reconstruct δD (and $\delta^{18}\text{O}$) of high-elevation precipitation. High-elevation samples used here include hydrous phyllosilicates (muscovite, biotite, and chlorite) from the Zwischbergen segment of the Simplon Fault Zone ~~SFZ~~, a ca. 14.5 Ma major extensional detachment in the Central Alps (Fig. 1) that has been shown to be a conduit for meteoric water (e.g. Campani et al., 2012). The formation of the Simplon Fault Zone ~~SFZ~~ is associated with Miocene orogen-parallel extension and coeval with orogen-perpendicular shortening (Mancel and Merle, 1987; Mancktelow, 1992). Crustal extension and development of this major extensional fault system promoted large-scale exhumation of the Lepontine metamorphic dome, which underwent rapid exhumation since 20 Ma. Slip movement along the Simplon Fault Zone ~~SFZ~~ persisted from 30 Ma to 3 Ma and peaked between 18 Ma and 15 Ma accompanied by rapid exhumation rates, accelerated footwall cooling with highest rates around 20 Ma (Campani et al., 2010; Grasemann and Mancktelow, 1993; Mancktelow, 1992) and infiltration of meteoric fluids with δD and $\delta^{18}\text{O}$ values of $-107 \pm 2\text{‰}$ and $-14.6 \pm 0.3\text{‰}$, respectively (Campani et al., 2012).

Pedogenic carbonates from the SMB sections serve as proxies for near sea-level precipitation $\delta^{18}\text{O}$ values. The $\delta^{18}\text{O}$ values of pedogenic carbonate ($\delta^{18}\text{O}_c$) are determined by the $\delta^{18}\text{O}$ value of soil water from which the carbonate formed, which in turn is closely linked to local meteoric water (Cerling and Quade, 1993) (~~Cerling and Quade, 1993~~). In combination with clumped isotope (Δ_{47}) carbonate formation temperatures we calculate $\delta^{18}\text{O}_w$ values of meteoric water based on the $\delta^{18}\text{O}_c$ values assuming oxygen isotope equilibrium fractionation (Kim and O'Neil, 1997; updated by Kim et al., 2007). Thus, by linking the high elevation Simplon Fault Zone ~~SFZ~~ $\delta^{18}\text{O}$ estimate with our temperature-corrected near sea-level $\delta^{18}\text{O}_w$ value we arrive at an updated estimation of the mid-Miocene elevation for the region surrounding the Simplon Fault Zone ~~SFZ~~ and the headwaters of the Napf megafan.

Soils can be affected by evaporative ^{18}O -enrichment in soil water caused by preferential loss of ^{16}O , which can result in a bias of the soil water $\delta^{18}\text{O}$ values (Cerling, 1984; Quade et al., 2007a). Therefore, when calculating low-elevation (near sea-level) precipitation $\delta^{18}\text{O}_w$ values from the $\delta^{18}\text{O}$ carbonate record we rely on the first quartile (lowest 25%) mean $\delta^{18}\text{O}_c$ values to avoid any potential synkinematically bias to increased near sea-level $\delta^{18}\text{O}_w$ values and a resulting overestimation in our paleoelevation reconstructions. We calculate $\delta^{18}\text{O}_w$ values for meteoric water for each SMB record for the 15.5 to 14.0 Ma time interval (instead of the entire records) to provide an age-equivalent estimate when compared to the high elevation Simplon Fault Zone ~~SFZ~~ data.

3.4 Paleoclimate simulations

260 ~~In particular for~~ For regions of variable topography the application of isotope tracking climate models allows us to estimate the impact of global paleoclimatic changes and the influence of surface uplift on regional $\delta^{18}\text{O}_w$ values (e.g. Botsyun et al., 2019; Ehlers and Poulsen, 2009; Feng et al., 2013; Poulsen et al., 2010). Here we discuss the results from ECHAM5-wiso GCM experiments, first performed in Botsyun et al. (2020), in the context of our paleoelevation reconstruction of the Central Alps. The ECHAM5-wiso is an atmospheric general circulation model (GCM) which is complemented with a water isotope module and enables global simulation of $\delta^{18}\text{O}$ patterns in precipitation (Werner et al., 2011). ECHAM5-wiso is able to reproduce both, climate- and altitude-related variations of $\delta^{18}\text{O}_w$ over the European region (Botsyun et al., 2020; Langebroek et al., 2011). Simulations were performed with a high-resolution grid (T159, corresponding to ~80 km in latitude and longitude at the equator) with 31 vertical levels (up to 10 hPa). Here we discuss the results from high resolution-isotope-enabled ECHAM5-wiso GCM experiments ~~Botsyun et al. (2020), previously described and validated in Botsyun et al. (2020).~~

265 ~~(2020).~~ Different topographic scenarios (topography experiments) were evaluated in order to quantify the signal of surface uplift preserved in $\delta^{18}\text{O}_w$ over the Northern Alpine Foreland Basin and the Alpine orogen. In the absence of model runs with Miocene boundary conditions we rely on a pre-industrial model setup with modern land-sea distribution and ρCO_2 of 280 ppm (details on the experimental setup and boundary conditions such as orbital parameters, greenhouse gas concentrations, sea surface temperature, sea-ice cover, and vegetation cover can be found in Mutz et al. (2018) and Botsyun et al. (2020)).

270 Four experiments were ~~We conducted experiments for four cases~~ with Alpine topography ranging between 150% and 0% (topography set to 250m) of the modern mean elevation in 50% increments (Alps150, Alps100, Alps50, and NoAlps). We evaluate $\delta^{18}\text{O}_w$ in three regions: 1) Northern Alpine Foreland Basin (low-elevation region), 2) Central Alps (high-elevation region), and 3) near shore (upwind) area of modern France (distant region), which lies on the preferential moisture trajectory to the northern Central Alps and the Northern Alpine Foreland Basin (Fig. 5A). The last was chosen

280 following Botsyun et al. (2020), who suggested the examination of low-elevation regions that lie far enough from the high elevation data sites enhance assessment of paleoclimate changes. Results are presented for summer months (June-July-August (JJA)) because pedogenic carbonate preferentially forms during the warm season (e.g. Breecker et al., 2009), although in some settings pedogenic carbonate formation has also been reported for cool seasons (Gallagher and Sheldon, 2016; Peters et al., 2013).

285 4 Results

4.1 Swiss Molasse Basin near sea-level paleosol carbonate $\delta^{18}\text{O}$, $\delta^{13}\text{C}$ and Δ_{47} data

Carbonate $\delta^{18}\text{O}$ data in Fig. 3-2 is shown as mean value per horizon (1-8 measured pedogenic nodules per carbonate bearing layer (Fig. S11, S12 in suppl. Material for $\delta^{13}\text{C}$ data). ~~On an overall scale both, carbonate $\delta^{18}\text{O}$ and $\delta^{13}\text{C}$ values show no systematic trend throughout the investigated time interval (-17.5 Ma to -13.5 Ma), yet with changing variability within each~~

290 ~~section.~~ Although carbonate $\delta^{18}\text{O}$ and $\delta^{13}\text{C}$ values reveal no systematic trend throughout the investigated time interval
(~17.5 Ma to ~13.5 Ma), each section shows high variability. Over the entire sections $\delta^{18}\text{O}_c$ values vary between 19.0 and
26.7‰ and $\delta^{13}\text{C}$ values between -8.5 and 1.2‰ covering ranges of 7.7‰ and 9.7‰, respectively. We observe differences in
 $\delta^{18}\text{O}_c$ and $\delta^{13}\text{C}$ values among the three foreland basin records, which we relate to their depositional setting (proximal vs.
295 distal) within the megafans and varying impact of soil water evaporation and soil productivity/interaction with atmospheric
 CO_2 for $\delta^{18}\text{O}_c$ and $\delta^{13}\text{C}$, respectively.

Fontannen $\delta^{18}\text{O}_c$ values show a tight range and vary between 19.0 and 21.3‰ with a mean of $19.8 \pm 0.4\%$ (n of individual
nodules = 47; [Campani et al., 2012](#)). $\delta^{13}\text{C}$ values show a higher variability and range from -6.0 to -0.6‰ with a mean of
 $-4.0 \pm 1.1\%$. Δ_{47} temperatures average at $36 \pm 7^\circ\text{C}$ (propagated error of the two individual samples) for two pedogenic
300 carbonate samples (MC965b; MC961; Methner et al. 2020) covering 14.5 Ma–14.9 Ma. Reconstructed $\delta^{18}\text{O}_w$ values for
meteoric water range from -7.1 to -4.7‰ with a first quartile mean $\delta^{18}\text{O}_w$ value of $-6.5 \pm 0.0\%$.

Jona $\delta^{18}\text{O}_c$ values range from 20.9 to 26.7‰, with a mean of $22.9 \pm 1.5\%$ (n = 100). $\delta^{13}\text{C}$ values range from -8.5 to 1.2‰
with a mean of $-3.8 \pm 2.1\%$. The mid-fan Jona section shows a wide range of $\delta^{18}\text{O}$ and $\delta^{13}\text{C}$ values that cover 5.8‰ ($\delta^{18}\text{O}_c$)
305 and 9.7‰ ($\delta^{13}\text{C}$). Δ_{47} derived carbonate formation temperatures were obtained for two pedogenic carbonate samples
(18EK192b; 18EK172a) at 14.5 and 14.9 Ma and yield an average temperature of $30 \pm 5^\circ\text{C}$. Calculated $\delta^{18}\text{O}_w$ values range
from -6.3 to -0.7‰ with a first quartile mean $\delta^{18}\text{O}_w$ value of $-5.8 \pm 0.2\%$.

Compared to the Jona and Fontannen sections pedogenic carbonates from the distal Aabach section yield the highest $\delta^{18}\text{O}_c$
310 values ranging from 23.0 to 25.9‰ with an average of $24.4 \pm 0.7\%$ (n = 57). $\delta^{13}\text{C}$ values vary between -6.2 and -0.1‰ with
an average of $-2.3 \pm 1.7\%$. We obtained a Δ_{47} temperature of $33 \pm 2^\circ\text{C}$ (12EK096a) at 15.6 Ma. Consequently, the
reconstructed $\delta^{18}\text{O}_w$ values range between -3.8 and 0.0‰ with a first quartile mean $\delta^{18}\text{O}_w$ value of $-3.1 \pm 0.3\%$.

4.2 Paleoclimate simulation of $\delta^{18}\text{O}_w$ data

Simulated [Northern Alpine Foreland BasinNAFB](#) (low-elevation) $\delta^{18}\text{O}_w$ values for the topography experiments range from -
315 4.2 to -5.0‰ for the NoAlps experiment, from -4.4 to -5.3‰ (Alps50), from -5.1 to -6.5‰ (Alps100), and from -5.5 to -
7.6‰ for the Alps150 experiments (Fig. 5B). For all topography experiments $\delta^{18}\text{O}_w$ values decrease with increasing
elevation. Simulated Central Alpine (high-elevation) $\delta^{18}\text{O}_w$ values range from -4.0 to -4.9‰ for NoAlps, from -4.7 to -6.1
(Alps50), from -6.0 to -9.4‰ (Alps100), and from -7.6 to -12.0‰ for the Alps150 experiment (Fig. 5B). For the distant
region all topography simulations show slightly higher $\delta^{18}\text{O}_w$ values when compared to the [Northern Alpine Foreland](#)
320 [BasinNAFB](#) (low-elevation) setting and range from -3.6 to -5.0‰.

5 Discussion

5.1 Swiss Molasse Basin near sea-level paleosol carbonate $\delta^{18}\text{O}$ record

$\delta^{18}\text{O}_c$ values of pedogenic carbonate reflect the $\delta^{18}\text{O}_w$ values of soil water and prevalent soil temperatures during carbonate formation. Soil water $\delta^{18}\text{O}_w$ values typically decrease with elevation but may be biased to higher $\delta^{18}\text{O}_w$ values in response to enhanced soil water evaporation (Quade et al., 2007b, 2020). Disentangling the impacts of temperature, elevation, and (soil water) evaporation on the $\delta^{18}\text{O}_c$ values of soil carbonates is essential for reconstructing a reliable near sea-level $\delta^{18}\text{O}_w$ record. In this context we want to stress, that $\delta^{18}\text{O}$ and (Δ_{47}) values of terrestrial carbonates can be affected by diagenetic alterations due to increased burial temperatures (Quade et al., 2020). Maximum erosion estimates for the OSM in the Central and Eastern Swiss Molasse Basin range from 350 m to ~2000 m (e.g. Cederbom et al., 2011; Schegg and Leu, 1998). Associated burial temperatures (Burkhard and Kalkreuth, 1989; Schegg, 1992) and duration of burial suggest, that our estimates of Swiss Molasse Basin carbonate $\delta^{18}\text{O}$ and (Δ_{47}) compositions have not been affected by burial alterations (for more details see suppl. Material SI4).

The Swiss Molasse Basin (SMB) foreland $\delta^{18}\text{O}_c$ records show significant differences along the slope of the SMB megafans with the lowest mean $\delta^{18}\text{O}_c$ value at the proximal fan position ($19.8 \pm 0.4\text{‰}$ at Fontannen), an intermediate value at the mid-fan position ($22.9 \pm 1.5\text{‰}$ at Jona) and highest at the distal fan position ($24.4 \pm 0.7\text{‰}$ at Aabach; Fig. 32). Environmental differences between the fan positions are not surprising as the Miocene sediments were deposited in large alluvial megafans which prograded from the Alpine front towards the basin center covering a present-day downstream distance of ca. 30 km (Garefalakis and Schlunegger, 2019). Accounting for post-Miocene crustal shortening, we consider this a minimum estimate for the Miocene length of the Alpine megafans. These megafans were fed by large drainage networks that led to high sediment discharge and aggradation of several hundred meters of detrital material near the fan apex resulting in an elevation gradient towards the orogenic front. Based on sedimentological data of Late Oligocene deposits of the Rigi megafan (30–25 Ma) in Central Switzerland, fan surface slopes ranged between approximately 0.2° at the base and 0.9° at the top (Garefalakis and Schlunegger, 2018). Using a time-averaged fan surface slope of $0.6 \pm 0.2^\circ$ and a fan length of 30 km the proximal part of such a fan would be at elevations of ~~more than~~ 300 ± 100 m above the Miocene sea level. Because of this internal elevation gradient, foreland basin records from proximal locations (e.g. Fontannen; Campani et al., 2012) were deposited at higher elevations compared to sections from more distal fan sites, thus not representing near sea-level $\delta^{18}\text{O}_w$ values.

The distal Aabach section was hence closest to the basin axis (~~mainly also because of the occurrence of paleolakes that were established in the lowest area of a basin, e.g. Platt and Keller, 1992~~) which was near or at sea level at that time (Kuhlemann and Kempf, 2002). The $\delta^{18}\text{O}_c$ and $\delta^{13}\text{C}$ values at Aabach, however, show a strong positive correlation (Fig. SI3 in suppl. Material), and they are additionally associated with high $\delta^{13}\text{C}$ values. Because significant C_4 vegetation was absent at that time (Cerling and Quade, 1993; Tipple and Pagani, 2007), these values indicate low soil respiration rates during the

formation of pedogenic carbonate (Quade et al., 2007 and references therein). High $\delta^{13}\text{C}$ values of soil carbonate are common during high plant water stress, low soil productivity, and low soil respiration and high soil evaporation rates (e.g. Breecker et al., 2009; Caves et al., 2016). Furthermore, the high $\delta^{13}\text{C}$ values at Aabach are consistent with a shift from humid to warm and semiarid conditions after 25 Ma, inferred from paleofloral records for the [Swiss Molasse BasinSMB](#) (Berger, 1992). Evaporative effects caused by local aridity and enhanced soil water evaporation may shift carbonate $\delta^{18}\text{O}_c$ values to higher values (Cerling, 1984; Cerling and Quade, 1993). These processes likely account for the [strong-positive](#) covariance of the $\delta^{18}\text{O}_c$ and $\delta^{13}\text{C}$ values, [which has also been observed in modern soils](#) (Cerling, 1984; Cerling and Quade, 1993). Consequently, we consider the rather high and highly variable Aabach pedogenic carbonate $\delta^{18}\text{O}_c$ values to be biased by varying soil water evaporation that translates into a positive bias in reconstructed soil water $\delta^{18}\text{O}_w$ values.

For our paleoelevation reconstruction, we thus consider the mid-fan Jona section as a conservative estimate for near sea-level $\delta^{18}\text{O}_w$ values as a) its fan position places the Jona section clearly down-slope from the proximal Fontannen section, b) combined $\delta^{18}\text{O}_c$ and $\delta^{13}\text{C}$ values show no indication for enhanced soil water evaporation, and c) using the mid-fan Jona section underestimates rather than overestimates reconstructed paleoelevations, [as unlike Aabach, it is not located closest to the basin centre](#). Consequently, we consider the variability in $\delta^{18}\text{O}_w$ values of the Jona section to reflect secular changes in environmental conditions. To further reduce potential (soil) evaporation bias we only select the first quartile mean $\delta^{18}\text{O}_c$ values ($\delta^{18}\text{O}_{c, \text{lowest } 1/4} = 21.4 \pm 0.2\text{‰}$ compared to mean $\delta^{18}\text{O}_c = 22.7 \pm 1.4\text{‰}$) to establish our best estimate for a mid-Miocene near sea-level $\delta^{18}\text{O}_w$ value.

370 5.2 Near sea-level precipitation $\delta^{18}\text{O}$ estimate

We conducted clumped isotope (Δ_{47}) thermometry on pedogenic carbonates from all three SMB sections in order to obtain estimates of carbonate formation temperatures and $\delta^{18}\text{O}_w$ values of meteoric water. Δ_{47} temperatures show high reproducibility and attain values of 36°C (Fontannen; $n = 2$ samples), 30°C (Jona; $n = 2$ samples), and 33°C (Aabach; $n = 1$ sample), consistent with warm season pedogenic carbonate formation during the warm temperatures of the mid-Miocene Climatic Optimum (Methner et al., 2020). Using $21.4 \pm 0.2\text{‰}$ (1st quartile mean Jona section) as a near sea-level carbonate $\delta^{18}\text{O}_c$ value, this results in $\delta^{18}\text{O}_w = -5.8 \pm 0.2\text{‰}$ as our best estimate for Miocene near sea-level $\delta^{18}\text{O}_w$ values of meteoric water. Collectively, these data revise previous estimates of near sea-level $\delta^{18}\text{O}_w$ based on the proximal Fontannen section ($\delta^{18}\text{O}_w = -8.9 \pm 0.5$ for 21°C ; Campani et al., 2012) which were calculated with mean annual temperatures derived from paleobotanical analysis. The difference to the revised value is composed of a more suitable choice of the near sea-level record (mid-fan vs. proximal fan position) and measured (instead of estimated) carbonate formation temperatures contributing to $+1.2\text{‰}$ and $+1.9\text{‰}$, respectively.

The reconstructed near sea-level Jona $\delta^{18}\text{O}_w$ value is consistent with $\delta^{18}\text{O}_w$ values from mid-Miocene SMB volcanic ash horizons (Bauer et al., 2016). Using a mineral-water fractionation temperature of 30°C (measured Δ_{47} temperature for Jona) [and a smectite-water oxygen isotope fractionation factor of](#) (Sheppard and Gilg, 1996) these ash layers (Ries, Künsnacht, and

385 Urdorf) reveal mean $\delta^{18}\text{O}_w$ values between -6.1 and -2.9‰, which are equal or even higher than our conservative near sea-level estimate of $\delta^{18}\text{O}_w = -5.8 \pm 0.2\%$ based on SMB Jona pedogenic carbonate. Furthermore, the near sea level Jona $\delta^{18}\text{O}_w$ estimate is in good agreement with modern summer months (June-July-August) $\delta^{18}\text{O}_w$ data from GNIP stations in Switzerland (~250–600 m.a.s.l.) which range between ~ -8‰ and -2‰.

390 5.3 Mid-Miocene stable isotope paleoaltimetry of the Central Alps

We contrast the near sea-level ~14 Ma old $\delta^{18}\text{O}_w$ record from the Jona section with a high-elevation $\delta^{18}\text{O}_w$ record from the Simplon Fault Zone at 14.5 Ma (Fig. 4).

Relative differences in $\delta^{18}\text{O}_w$ between near sea level and the high-Alpine Simplon Fault Zone/SFZ fault zone are expressed by $\Delta(\delta^{18}\text{O}_w)$ and calculated by subtracting the SMB $\delta^{18}\text{O}_w$ value from the SFZ $\delta^{18}\text{O}_w$ value, following Eq. (1):

$$395 \quad \Delta(\delta^{18}\text{O}_w) = \delta^{18}\text{O}_w(\text{SFZ}) - \delta^{18}\text{O}_w(\text{SMB}) \quad (1)$$

Given $\delta^{18}\text{O}_w$ values for near sea elevation of $-5.8 \pm 0.2\%$ and the high-Alpine Simplon Fault Zone/SFZ of $-14.6 \pm 0.3\%$ (Campani et al., 2012), respectively, $\Delta(\delta^{18}\text{O}_w)$ equals $-8.8 \pm 0.5\%$ (Fig. 6A). For the paleoelevation calculation, we explored different oxygen isotope lapse rates (Fig. 6B), including the present-day Alpine lapse rate based on long-term meteorological station data (-2.0% / km; Campani et al., 2012), the present-day surface water and precipitation based oxygen isotope lapse rate for Europe (-2.1% / km; Poage and Chamberlain, 2001), a thermodynamic model based lapse rate that tracks the isotopic composition of water vapour along precipitation trajectories (Currie et al., 2005; Rowley et al., 2001; Rowley and Garzzone, 2007), and the output of the isotope-enabled paleoclimate model ECHAM5-wiso (-2.4% / km; Botsyun et al., 2020). Independent of the choice of these lapse rates a $\Delta(\delta^{18}\text{O}_w)$ value of $-8.8 \pm 0.5\%$ requires significant orographic rainout and hence elevated topography. For instance, applying the different lapse rates to a $\Delta(\delta^{18}\text{O})$ value of -8.8‰ yields paleoelevations in the range of ~36790 m to 4420-4400 m (Table S15-S17 in suppl. Material). The inferred paleoelevation estimate represents the mean elevation of the mid-Miocene paleo-catchment of precipitation in the Simplon area. To keep comparability with the previous stable isotope paleoaltimetry study of Campani et al. (2012), we use the modern Alpine oxygen isotope lapse rate of $-2.0 \pm 0.04\%$ / km. Based on the $\Delta(\delta^{18}\text{O}_w)$ value of $-8.8 \pm 0.5\%$ this is consistent with a relative elevation difference between the Swiss Molasse Basin/SMB and the Simplon Fault Zone/SFZ of Δz (m) = 4420-4400 \pm 770 m (Fig. 6B). Assuming a much more conservative choice of isotope lapse rate (-2.4% / km; Botsyun et al., 2020) the same $\Delta(\delta^{18}\text{O}_w)$ value results in Δz (m) = 3670 \pm 625 m. Differences in atmospheric temperature gradients in the past will inevitably affect oxygen and hydrogen isotope lapse rate and climate change may play a decisive role when trying to assess paleoelevation of ancient mountain ranges. Especially for warmer periods of the Earth's past it is shown that warm conditions yield shallower lapse rates (Poulsen and Jeffery, 2011; Rowley and Garzzone, 2007). All existing data point to warmer conditions in Central Europe during the mid-Miocene Climatic Optimum when compared to today (Böhme, 2003; Methner et al., 2020; Mosbrugger et al., 2005; Pound et al., 2012). The mid-Miocene should logically have been

characterized by lower isotopic lapse rates when compared to the present. Thus, application of the present-day Alpine lapse rate most likely underestimates mid-Miocene paleoelevations. Our estimated mid-Miocene (~14.5 Ma) surface elevation of ~~~4420-4440~~ m for the region surrounding the Simplon Fault Zone ~~SFZ~~ is in good agreement with proposed mid-Miocene minimum elevation of 5000 m given by Sharp et al. (2005) and the >5000 m found for the Oligocene/ Miocene boundary by Jäger & Hantke (1983, 1984), and places our estimated paleoelevation in the higher spectrum of derived paleoaltimetry estimates hitherto. For comparison, peaks in the region today attain elevations in excess of 3500 m.

5.4 Modeled low-elevation $\delta^{18}\text{O}_w$ estimates

Collectively, the topography-modulated model experiments indicate the following. First, modeled Northern Alpine Foreland Basin $\delta^{18}\text{O}_w$ values for the Alps50, Alps100, and Alps150 cases range from -4.4 to -7.6‰, and therefore are in good agreement with the reconstructed low-elevation $\delta^{18}\text{O}_w$ estimate of -5.8‰ from the Swiss Molasse Basin. Furthermore, the ECHAM5-wiso simulations reveal that a $\Delta(\delta^{18}\text{O}_w)$ value of -8.8‰ between the high-elevation and the low-elevation records requires a mountain range with an elevation of >150% of present-day Alpine mean topography (Fig. 5B, 6B). We therefore interpret the observed difference in $\delta^{18}\text{O}_w$ between the high-elevation and low-elevation records as resulting from a higher-than-modern mid-Miocene elevation of the region surrounding the Simplon Fault Zone. This interpretation is supported by the predicted differences in the 150% to 100% topographic change explored in the paleoclimate simulations.

5.5 High (and highly variable) mid-Miocene Central Alps?

Our paleoelevation estimate of >4000 m for the mid-Miocene Simplon area is surprisingly high when compared to low erosion rates between 16 and 12 Ma for the Swiss Alps, as inferred from sediment budget studies (Kuhlemann et al., 2001). At the first glance, this may seem contradictory. In the following we explain how the formation of a complex Alpine topography can resolve this contradiction. We propose a scenario where the pre-mid-Miocene Central Alps changed from a rather simple, and most likely cylindrical to a more diverse landscape with a complex topography latest at ~15 Ma. This change may have been mainly driven by rapid exhumation of deep seated core complexes, followed by a rearrangement of the drainage system.

~~Various mechanisms may have contributed to the increase of post collisional Alpine surface elevation. These include horizontal shortening, thickening of the continental crust, and following isostatic adjustment of the lithosphere (e.g. Pfiffner et al., 2002), mantle scale uplift caused by slab breakoff (e.g. Lippitsch, 2003), slab rollback and associated delamination within the lithosphere (Kissling and Schlunegger, 2018; Schlunegger and Kissling, 2015) or asthenospheric upwelling (e.g. Lyon-Caen and Molnar, 1989). At the same time climate change will impact topography, e.g. through accelerated erosional unroofing forcing isostatic rebound of the unloaded lithosphere (Cederbom et al., 2004; Champagnac et al., 2009; Mey et al., 2016).~~

The history of Central Alpine topography is considered to have started no later than the Late Oligocene/ Early Miocene after slab breakoff of subducted oceanic lithosphere ~32–30 Ma ago (Schlunegger and Kissling, 2015). Increased sediment

discharge in the Swiss Alps has been documented for several periods (30–28 Ma, 24–21 Ma, and 18–17 Ma) and linked to
450 exhumation and surface uplift events and increase in topographic relief (Kuhlemann et al., 2001). A transition from a poorly
dissected, plateau-like orogen to a rugged mountain range with steep relief is proposed for the Alps at ~27 Ma as a possible
response to slab breakoff (Garefalakis and Schlunegger, 2018), promoting the buildup of high mountain peaks, and
establishing a N-S oriented drainage network with a drainage divide situated close to the area of inferred slab breakoff
(Kuhlemann et al., 2001). ~~Can stable isotope paleoaltimetry data inform about the spatial heterogeneity of surface elevation
455 in the mMid-Miocene Central Alps?~~
~~The situation then changed from ca. 20 Ma onward, when Although the currently observed Alpine mean topography with a
present day average elevation of ca. 2000 m (Kühni and Pfiffner, 2001) may not have experienced major changes since the
timing of continent-continent collision (Kissling and Schlunegger, 2018),~~ basin- and orogen-related reorganizations are
likely to have affected the topographic evolution on a regional scale since at least the **early-Early** Miocene. These include
460 exhumation in the Lepontine and Aar regions (Herwegh et al., 2017; Schlunegger and Willett, 1999), hypothesized reversal
in slab polarity ([Kissling et al., 2006](#); [Lippitsch, 2003](#)) or [slab delamination](#) (Handy et al., 2021) beneath the Eastern Alps
([Kissling et al., 2006](#); [Lippitsch, 2003](#)), switch in the regional tilt of the **Swiss Molasse BasinSMB** and an associated change
in the basin-axial discharge direction at ~17 Ma and to a more complex pattern thereafter (Berger et al., 2005; Kuhlemann
and Kempf, 2002; Kühni and Pfiffner, 2002; [Garefalakis and Schlunegger, 2019](#)), a change in sediment provenance in the
465 SMB deposits (e.g. Anfinson et al., 2020; Von Eynatten et al., 1999), and [beginning reorganization of the main drainage
dividedrainage network into an orogen-parallel E-W-oriented system](#) (Bernard et al., 2021; Kühni and Pfiffner, 2002;
Schlunegger et al., 2001)(Kühni and Pfiffner, 2002; Schlunegger et al., 2001)(Kühni and Pfiffner, 2002; Schlunegger et al.,
2001)(Kühni and Pfiffner, 2002; Schlunegger et al., 2001)(Kühni and Pfiffner, 2002; Schlunegger et al., 2001)(Kühni and
Pfiffner, 2002; Schlunegger et al., 2001). Four observations point to high spatial topographic heterogeneity in the **mMid-**
470 **Miocene Central Alps**: (1) The rapid nearly vertical rise of the Aar massif at ~20 Ma is associated with a rearrangement of
the drainage network leading to a shift of the drainage divide towards the uplifted crystalline block (Bernard et al., ~~2021~~
~~in~~ [press](#); Kühni and Pfiffner, 2001; Schlunegger et al., 2001), which is made up of basement rocks of the European plate
comprising granites and granodiorites (Herwegh et al., 2020) with the lowest erodibility in the Central Alps (Kühni and
Pfiffner, 2002). A shift of the drainage divide towards rocks with low erodibility implies a decrease in overall
475 erosion/denudation rates by reducing the erosional potential for several [million yearsMyr](#). This potentially resulted in
increased surface uplift rates, and, thus in a local rise of topography (Bernard et al., ~~in press~~2021). (2) Associated re-routing
of streams by rise of such a crystalline block in the center of an orogen is further consistent with the initiation of an orogen-
parallel oriented drainage system similar to the change from an orogen-normal N-S-directed to an orogen-parallel E-W-
oriented drainage pattern that occurred during the **early-Early** Miocene. Such a change will inevitably affect the overall relief
480 structure. We need to add, however, that an orogen-parallel pattern was not yet fully established in the mid-Miocene, as
studies show that the Napf megafan was still receiving deposits from the Aar region at this time (Stutenbecker et al., 2019).
(3) Interestingly, at the same time, rapid exhumation of the nearby Lepontine area through slip along the **Simplon Fault**

ZoneSFZ was associated with a reduction in sediment supply to the Swiss Molasse BasinSMB (Kuhlemann et al., 2001). Normal fault-induced rapid exhumation of the Lepontine dome footwall, with highest rates at ~20 Ma renders it likely that mean elevation decreased in the Lepontine area in response to rapid tectonic exhumation and associated unroofing. (4) The stable isotope paleoaltimetry data from the Simplon Pass region, however, indicate rather high >4000 m coeval surface elevations only 45 km to the W of the Lepontine Dome.

The co-existence of regions with different elevations on a small spatial scale within the Miocene Central Alps points to a regional landscape characterized by significant topographic complexity that was sensitive to alterations of the local drainage network, and was accompanied by laterally variable exhumation rates. Therefore, on a regional scale the Miocene Alps were most probably characterized by a heterogeneous, and spatially transient topography with high elevations locally exceeding 4000 m. A heterogeneous, non-cylindrical Alpine tectonic structure with corresponding topography has implications e.g. for the spatially variably impact of slab dynamics to Earth surface process by provoking perturbations of surface loads as well as for assumptions made in orogen-scale denudation and landscape development models. ~~Subsequent paleoaltimetry studies will have to focus on changes of surface elevation through space and time. The combination of stable isotope paleoaltimetry, analysis of regional exhumation patterns in conjunction with paleoclimate modelling can contribute to establishing not only absolute elevations but also to reconstructing past elevation difference along and across the orogen by linking long-wavelength subsurface with short wavelength surface processes which affect the Alpine topographic evolution. Further experiments with isotope tracking global atmospheric circulation models that test time specific boundary conditions of the middle Miocene will represent key elements in verifying observed changes in $\delta^{18}\text{O}_w$ and will provide important information on links and feedbacks between surface uplift and associated climate change.~~

6 Conclusions

Our revised stable isotope paleoaltimetry estimates indicate high (>4000 m) paleoelevations for the mid-Miocene (15.5–14.0 Ma) Central Alpine region surrounding the Simplon Fault Zone. This result is based on a) the pedogenic carbonate record best representing the near sea-level $\delta^{18}\text{O}_w$ values in the Swiss Molasse Basin, b) quantification of carbonate formation temperatures by Δ_{47} thermometry (rather than assuming those from other terrestrial temperature proxies) and c) ECHAM5-wiso modeled Northern Alpine Foreland Basin $\delta^{18}\text{O}_w$ values that cover the same range as reconstructed near sea-level mean $\delta^{18}\text{O}_w$ values. Based on coupled $\delta^{18}\text{O}_c$ values and clumped isotope (Δ_{47}) paleothermometry on SMB pedogenic carbonates (present-day elevation of ~500–800 m.a.s.l) we estimate a mean $\delta^{18}\text{O}_w$ value for near sea-level precipitation of $-5.8 \pm 1.2\%$. Our conservative paleoaltimetry estimation yields a difference in paleoelevation of 4400 ± 770 m between the Swiss Molasse Basin and the region surrounding the Simplon Fault Zone. We propose a change from a uniform pre-mid-Miocene landscape to a more complex one with highly variable topography latest in the Middle Miocene. We link this change with the exhumation of the Aar Massif at ~20 Ma and the associated Miocene reorganization of the Alpine drainage network, initiated by the uplift of the Aar massif at ~20 Ma, with the proposed establishment of a highly variable topography within

515 ~~the orogen. Based on coupled $\delta^{18}\text{O}_e$ values and clumped isotope (Δ_{47}) paleothermometry on SMB pedogenic carbonates we~~
~~estimate a mean $\delta^{18}\text{O}_w$ value for near sea level precipitation of $-5.8 \pm 0.2\%$. Our conservative paleoaltimetry estimation~~
~~yields a difference in paleoelevation of 4420 ± 770 m between the SMB and the region surrounding the SFZ. Subsequent~~
~~paleoaltimetry studies will have to focus on changes of surface elevation through space and time. The combination of stable~~
~~isotope paleoaltimetry, analysis of regional exhumation patterns in conjunction with paleoclimate modelling can contribute~~
520 ~~to establishing not only absolute elevations, but also to reconstructing past elevation difference along and across the orogen~~
~~by linking long-wavelength subsurface with short-wavelength surface processes which affect the Alpine topographic~~
~~evolution. Further experiments with isotope tracking global atmospheric circulation models that test time-specific boundary~~
~~conditions of the ~~m~~Middle Miocene will represent key elements in verifying observed changes in $\delta^{18}\text{O}_w$ and will provide~~
~~important information on links and feedbacks between surface uplift and associated climate change.~~

525

Data availability

Supplementary data associated with this article can be found in the online version.

Author contributions

530 EK, KM, AM, and TAE designed the study. KM, AM, MC, SB, and OK helped during field work and with sample
collection. EK carried out sample preparation and analyses; SB produced the model data. KM and JF supported the clumped
isotope analyses. AM, KM, SB, SGM, TAE, and FS discussed the results and EK, KM and AM prepared the paper with
contributions by all co-authors.

535 Competing interests

The authors declare that they have no conflict of interest.

Acknowledgements

This is a contribution to DFG-SPP 2017 4D-MB. We acknowledge support through DFG ME 4955/1-1 (to KM), DFG MU
540 2845/6-1 (to AM), DFG EH 329/19-1 (to TAE), DFG MU 4188/1-1 (to SGM), and DFG FI 948/4-1 (to JF). KM further
acknowledges support through the Feodor-Lynen-Fellowship of the Alexander von Humboldt foundation. We thank S.
Hofmann (Frankfurt) for laboratory assistance.

References

Anfinson, O. A., Stockli, D. F., Miller, J. C., Möller, A. and Schlunegger, F.: Tectonic exhumation of the central alps
545 recorded by detrital zircon in the Molasse Basin, Switzerland, *Solid Earth*, 11(6), 2197–2220, doi:10.5194/se-11-2197-2020,
2020.

- Bauer, K. K., Vennemann, T. W. and Gilg, H. A.: Stable isotope composition of bentonites from the Swiss and Bavarian Freshwater Molasse as a proxy for paleoprecipitation, *Palaeogeogr. Palaeoclimatol. Palaeoecol.*, 455, 53–64, doi:10.1016/j.palaeo.2016.02.002, 2016.
- 550 Beaumont, C., Ellis, S., Hamilton, J. and Fullsack, P.: Mechanical model for subduction-collision tectonics of Alpine-type compressional orogens, *Geology*, 24(8), 675–678, doi:10.1130/0091-7613(1996)024<0675:MMFSCT>2.3.CO;2, 1996.
- Berger, J. P.: *Paleontologie de la Molasse de Suisse Occidentale, taxonomique, biostratigraphie, paleoecologie, paleogeographie et paleoclimatologie.*, (Habilitation thesis, Univ Fribourg, Fribourg, 405 pp), 1992.
- Berger, J. P., Reichenbacher, B., Becker, D., Grimm, M., Grimm, K., Picot, L., Storni, A., Pirkenseer, C. and Schaefer, A.:
 555 Eocene-Pliocene time scale and stratigraphy of the Upper Rhine Graben (URG) and the Swiss Molasse Basin (SMB), *Int. J. Earth Sci.*, 94(4), 711–731, doi:10.1007/s00531-005-0479-y, 2005.
- Bernard, T., Sinclair, H. D., Gailleton, B. and Fox, M.: Formation of Longitudinal River Valleys and the Fixing of Drainage Divides in Response to Exhumation of Crystalline Basement, *Geophys. Res. Lett.*, 48(8), 1–9, doi:10.1029/2020GL092210, 2021.
- 560 Böhme, M.: The Miocene Climatic Optimum: evidence from ectothermic vertebrates of Central Europe, *Palaeogeogr. Palaeoclimatol. Palaeoecol.*, 195(3), 389–401, doi:10.1016/S0031-0182(03)00367-5, 2003.
- Bolliger, T.: *Kleinsäugerstratigraphie in der Miozänen Hörnlischüttung (Ostschweiz).*, *Doc. naturae* 75., 1–296, 1992.
- Bolliger, T., Kindlimann, R. and Wegmüller, U.: marinen Sedimente (jüngere OMM, St. Galler-Formation) am Südwestrand der Hörnlischüttung (Ostschweiz) und die palökologische Interpretation ihres, *Eclogae Geol. Helv.*, 88(3), 885–909,
 565 doi:10.5169/seals-167709, 1995.
- Botsyun, S. and Ehlers, T. A.: How Can Climate Models Be Used in Paleoelevation Reconstructions?, *Front. Earth Sci.*, 9(February), 1–7, doi:10.3389/feart.2021.624542, 2021.
- Botsyun, S., Sepulchre, P., Risi, C. and Donnadiou, Y.: Impacts of Tibetan Plateau uplift on atmospheric dynamics and associated precipitation $\delta^{18}O$, *Clim. Past*, 12(6), 1401–1420, doi:10.5194/cp-12-1401-2016, 2016.
- 570 Botsyun, S., Sepulchre, P., Donnadiou, Y., Risi, C., Licht, A. and Caves Rugenstein, J. K.: Revised paleoaltimetry data show low Tibetan Plateau elevation during the Eocene, *Science* (80-.), 363(6430), doi:10.1126/science.aag1436, 2019.
- Botsyun, S., Ehlers, T. A., Mutz, S. G., Methner, K., Krsnik, E. and Mulch, A.: Opportunities and Challenges for Paleoaltimetry in “Small” Orogens: Insights From the European Alps, *Geophys. Res. Lett.*, 47(4),
 doi:10.1029/2019GL086046, 2020.
- 575 Breecker, D. O., Sharp, Z. D. and McFadden, L. D.: Seasonal bias in the formation and stable isotopic composition of pedogenic carbonate in modern soils from central New Mexico, USA, *Bull. Geol. Soc. Am.*, 121(3–4), 630–640, doi:10.1130/B26413.1, 2009.
- Büchi, U. P.: *Zur Stratigraphie der Oberen Süsswassermolasse (OSM) der Ostschweiz*, 1959.
- Bürgisser, M. H.: A unique mass flow marker bed in a miocene streamflow molasse sequence, Switzerland., InKoster EH,
 580 Steel RJ *Sedimentol. gravels conglomerates. Can Soc Pet. Geol Mem*, 10, 147–163, 1984.

- Burkhard, M. and Kalkreuth, W.: Coalification in the northern Wildhorn nappe and adjacent units, western Switzerland. Implications for tectonic burial histories, *Tectonophysics*, *167*(1), 47–64, 1989.
- Campani, M., Mancktelow, N., Seward, D., Rolland, Y., Müller, W. and Guerra, I.: Geochronological evidence for continuous exhumation through the ductile-brittle transition along a crustal-scale low-angle normal fault: Simplon Fault Zone, central Alps, *Tectonics*, *29*(3), doi:10.1029/2009TC002582, 2010.
- Campani, M., Mulch, A., Kempf, O., Schlunegger, F. and Mancktelow, N.: Miocene paleotopography of the Central Alps, *Earth Planet. Sci. Lett.*, *337–338*, 174–185, doi:10.1016/j.epsl.2012.05.017, 2012.
- Caves, J. K., Moragne, D. Y., Ibarra, D. E., Bayshashov, B. U., Gao, Y., Jones, M. M., Zhamangara, A., Arzhannikova, A. V., Arzhannikov, S. G. and Chamberlain, C. P.: The Neogene de-greening of Central Asia, *Geology*, *44*(11), 887–890, doi:10.1130/G38267.1, 2016.
- Cederbom, C. E., Sinclair, H. D., Schlunegger, F. and Rahn, M. K.: Climate-induced rebound and exhumation of the European Alps, *Geology*, *32*(8), 709–712, doi:10.1130/G20491.1, 2004.
- Cederbom, C. E., van der Beek, P., Schlunegger, F., Sinclair, H. D. and Oncken, O.: Rapid extensive erosion of the North Alpine foreland basin at 5–4 Ma, *Basin Res.*, *23*(5), 528–550, doi:https://doi.org/10.1111/j.1365-2117.2011.00501.x, 2011.
- Cerling, T. E.: The stable isotopic composition of modern soil carbonate and its relationship to climate, *Earth Planet. Sci. Lett.*, *71*(2), 229–240, doi:10.1016/0012-821X(84)90089-X, 1984.
- Cerling, T. E. and Quade, J.: Stable carbon and oxygen isotopes in soil carbonates. In: Swart, P.K., Lohmann, K.C., McKenzie, J., Savin, S. (Eds.), *Climate change in continental isotopic records*, AGU Geophys. Monogr. Am. Geophys. Union, 1993.
- Champagnac, J. D., Schlunegger, F., Norton, K., von Blanckenburg, F., Abbühl, L. M. and Schwab, M.: Erosion-driven uplift of the modern Central Alps, *Tectonophysics*, *474*(1–2), 236–249, doi:10.1016/j.tecto.2009.02.024, 2009.
- Currie, B. S., Rowley, D. B. and Tabor, N. J.: Middle Miocene paleoaltimetry of southern Tibet: Implications for the role of mantle thickening and delamination in the Himalayan orogen, *Geology*, *33*(3), 181–184, doi:10.1130/G21170.1, 2005.
- Ehlers, T. A. and Poulsen, C. J.: Influence of Andean uplift on climate and paleoaltimetry estimates, *Earth Planet. Sci. Lett.*, *281*(3–4), 238–248, doi:10.1016/j.epsl.2009.02.026, 2009.
- Eiler, J. M.: “Clumped-isotope” geochemistry—The study of naturally-occurring, multiply-substituted isotopologues, *Earth Planet. Sci. Lett.*, *262*(3), 309–327, doi:10.1016/j.epsl.2007.08.020, 2007.
- Von Eynatten, H., Schlunegger, F., Gaupp, R. and Wijbrans, J. R.: Exhumation of the Central Alps: Evidence from ⁴⁰Ar/³⁹Ar laserprobe dating of detrital white micas from the Swiss Molasse Basin, *Terra Nov.*, *11*(6), 284–289, doi:10.1046/j.1365-3121.1999.00260.x, 1999.
- Feng, R., Poulsen, C. J., Werner, M., Chamberlain, C. P., Mix, H. T. and Mulch, A.: Early cenozoic evolution of topography, climate, and stable isotopes in precipitation in the north American cordillera, *Am. J. Sci.*, *313*(7), 613–648, doi:10.2475/07.2013.01, 2013.
- Flower, B. P. and Kennett, J. P.: The middle Miocene climatic transition: East Antarctic ice sheet development, deep ocean

- 615 circulation and global carbon cycling, *Palaeogeogr. Palaeoclimatol. Palaeoecol.*, 108(3–4), 537–555, doi:10.1016/0031-0182(94)90251-8, 1994.
- Foster, G. L. and Rohling, E. J.: Relationship between sea level and climate forcing by CO₂ on geological timescales, *Proc. Natl. Acad. Sci. U. S. A.*, 110(4), 1209–1214, doi:10.1073/pnas.1216073110, 2013.
- Frisch, W.: Tectonic progradation and plate tectonic evolution of the Alps, *Tectonophysics*, 60(3–4), 121–139, doi:10.1016/0040-1951(79)90155-0, 1979.
- 620 Froitzheim, N., Plašienka, D. and Schuster, R.: Alpine tectonics of the Alps and Western Carpathians, edited by T. McCann, *Cent. Eur.*, 6(2), 1141–1232, doi:10.1144/cev2p.6, 2008.
- Gallagher, T. M. and Sheldon, N. D.: Combining soil water balance and clumped isotopes to understand the nature and timing of pedogenic carbonate formation, *Chem. Geol.*, 435, 79–91, doi:10.1016/J.CHEMGEO.2016.04.023, 2016.
- 625 Garefalakis, P. and Schlunegger, F.: Link between concentrations of sediment flux and deep crustal processes beneath the European Alps, *Sci. Rep.*, 8(1), 1–11, doi:10.1038/s41598-017-17182-8, 2018.
- Garefalakis, P. and Schlunegger, F.: Tectonic processes, variations in sediment flux, and eustatic sea level recorded by the 20 Myr old Burdigalian transgression in the Swiss Molasse basin, *Solid Earth*, 10(6), 2045–2072, doi:10.5194/se-10-2045-2019, 2019.
- 630 Ghosh, P., Adkins, J., Affek, H., Balta, B., Guo, W., Schauble, E. A., Schrag, D. and Eiler, J. M.: 13C-18O bonds in carbonate minerals: A new kind of paleothermometer, *Geochim. Cosmochim. Acta*, 70(6), 1439–1456, doi:10.1016/j.gca.2005.11.014, 2006.
- Grasemann, B. and Mancktelow, N. S.: Two-dimensional thermal modelling of normal faulting: the Simplon Fault Zone, Central Alps, Switzerland, *Tectonophysics*, 225(3), 155–165, doi:https://doi.org/10.1016/0040-1951(93)90277-Q, 1993.
- 635 Gubler, T., Meier, M. and Oberli, F.: Bentonites as time markers for sedimentation of the Upper Freshwater Molasse: geological observations corroborated by high-resolution single-Zircon U-Pb ages., *Jahresversammlung der Schweizerischen Akad. der Naturwissenschaften*, (172), 12–13, 1992.
- Handy, M., Schmid, S., Paffrath, M. and Friederich, W.: European tectosphere and slabs beneath the greater Alpine area – Interpretation of mantle structure in the Alps-Apennines-Pannonian region from teleseismic V<sub>p</sub> studies, *Solid Earth Discuss.*, (May), 1–61, doi:10.5194/se-2021-49, 2021.
- 640 Handy, M. R., M. Schmid, S., Bousquet, R., Kissling, E. and Bernoulli, D.: Reconciling plate-tectonic reconstructions of Alpine Tethys with the geological-geophysical record of spreading and subduction in the Alps, *Earth-Science Rev.*, 102(3–4), 121–158, doi:10.1016/j.earscirev.2010.06.002, 2010.
- Herold, N., Seton, M., Müller, R. D., You, Y. and Huber, M.: Middle Miocene tectonic boundary conditions for use in climate models, *Geochemistry, Geophys. Geosystems*, 9(10), doi:10.1029/2008GC002046, 2008.
- Herwegh, M., Berger, A., Baumberger, R., Wehrens, P. and Kissling, E.: Large-Scale Crustal-Block-Extrusion During Late Alpine Collision, *Sci. Rep.*, 7(1), 1–10, doi:10.1038/s41598-017-00440-0, 2017.
- Herwegh, M., Berger, A., Glotzbach, C., Wangenheim, C., Mock, S., Wehrens, P., Baumberger, R., Egli, D. and Kissling,

- E.: Late stages of continent-continent collision: Timing, kinematic evolution, and exhumation of the Northern rim (Aar Massif) of the Alps, *Earth-Science Rev.*, 200, 102959, doi:<https://doi.org/10.1016/j.earscirev.2019.102959>, 2020.
- Hilgen, F. J., Lourens, L. J., Van Dam, J. A., Beu, A. G., Boyes, A. F., Cooper, R. A., Krijgsman, W., Ogg, J. G., Piller, W. E. and Wilson, D. S.: The Neogene Period., 2012.
- Insel, N., Poulsen, C. J., Ehlers, T. A. and Sturm, C.: Response of meteoric δ 18O to surface uplift - Implications for Cenozoic Andean Plateau growth, *Earth Planet. Sci. Lett.*, 317–318, 262–272, doi:[10.1016/j.epsl.2011.11.039](https://doi.org/10.1016/j.epsl.2011.11.039), 2012.
- 655 Jäger, E. and Hantke, R.: Die Entwicklungsgeschichte der Alpen, *Naturwissenschaften*, 70(5), 209–215, doi:[10.1007/BF00405437](https://doi.org/10.1007/BF00405437), 1983.
- Jäger, E. and Hantke, R.: Evidenzen für die Vergletscherung eines alpinen Bergeller Hochgebirges an der Grenze Oligozän/Miozän, *Geol. Rundschau*, 73(2), 567–575, doi:[10.1007/BF01824972](https://doi.org/10.1007/BF01824972), 1984.
- Kälin, D.: The Mammal zonation of the Upper Marine Molasse of Switzerland reconsidered. A local biozonation of MN 2-660 MN 5, Aguilar, J.-P., Legend. S., Michaux, J. (Eds.), *Actes du Congrès Biochrom'97. Me'm. Trav. E.P.H.E. Montpellier 21 Biochrom'97*, 21(January 1997), 515–535, 1997.
- Kälin, D. and Kempf, O.: High-resolution stratigraphy from the continental record of the Middle Miocene Northern Alpine Foreland Basin of Switzerland, *Neues Jahrb. für Geol. und Paläontologie - Abhandlungen*, 254(1), 177–235, doi:[10.1127/0077-7749/2009/0010](https://doi.org/10.1127/0077-7749/2009/0010), 2009.
- 665 Keller, B.: Fazies und Stratigraphie der Oberen Meeresmolasse (Unteres Miozän) zwischen Napf und Bodensee., PhD thesis, Univ. Bern, 302 pp, 1989.
- Kempf, O. and Matter, A.: Magnetostratigraphy and depositional history of the Upper Freshwater Molasse (OSM) of eastern Switzerland, *Eclogae Geol. Helv.*, 92(1), 97–103, doi:[10.5169/seals-168650](https://doi.org/10.5169/seals-168650), 1999.
- Kempf, O., Bolliger, T., Kalin, D., Engesser, B., Matter, A., Moyen, I. A. and Avant, D. E. L.: New Magnetostratigraphic 670 Calibration of Early to Middle Miocene Mammal Biozones of the North Alpine Foreland Basin, , 547–561, 1997.
- Kempf, O., Matter, A., Burbank, D. W. and Mange, M.: Depositional and structural evolution of a foreland basin margin in a magnetostratigraphic framework: the eastern Swiss Molasse Basin, *Int. J. Earth Sci.*, 88(2), 253–275, 1999.
- Kim, S.-T. and O'Neil, J. R.: Equilibrium and nonequilibrium oxygen isotope effects in synthetic carbonates, *Geochim. Cosmochim. Acta*, 61(16), 3461–3475, 1997.
- 675 Kim, S. T., Mucci, A. and Taylor, B. E.: Phosphoric acid fractionation factors for calcite and aragonite between 25 and 75 °C: Revisited, *Chem. Geol.*, 246(3–4), 135–146, doi:[10.1016/j.chemgeo.2007.08.005](https://doi.org/10.1016/j.chemgeo.2007.08.005), 2007.
- Kissling, E. and Schlunegger, F.: Rollback Orogeny Model for the Evolution of the Swiss Alps, *Tectonics*, 37(4), 1097–1115, doi:[10.1002/2017TC004762](https://doi.org/10.1002/2017TC004762), 2018.
- Kissling, E., Schmid, S. M., Lippitsch, R., Ansorge, J. and Fügenschuh, B.: Lithosphere structure and tectonic evolution of 680 the Alpine arc: New evidence from high-resolution teleseismic tomography, *Geol. Soc. Mem.*, 32, 129–145, doi:[10.1144/GSL.MEM.2006.032.01.08](https://doi.org/10.1144/GSL.MEM.2006.032.01.08), 2006.
- Kocsis, L., Vennemann, T. W. and Fontignie, D.: Migration of sharks into freshwater systems during the Miocene and

- implications for Alpine paleoelevation, *Geology*, 35(5), 451–454, 2007.
- Kuhlemann, J.: Paleogeographic and paleotopographic evolution of the Swiss and Eastern Alps since the Oligocene, *Glob. Planet. Change*, 58(1–4), 224–236, doi:10.1016/j.gloplacha.2007.03.007, 2007.
- Kuhlemann, J. and Kempf, O.: Post-Eocene evolution of the North Alpine Foreland Basin and its response to Alpine tectonics, *Sediment. Geol.*, 152(1–2), 45–78, doi:10.1016/S0037-0738(01)00285-8, 2002.
- Kuhlemann, J., Frisch, W., Dunkl, I. and Székely, B.: Quantifying tectonic versus erosive denudation by the sediment budget: The miocene core complexes of the Alps, *Tectonophysics*, 330(1–2), 1–23, doi:10.1016/S0040-1951(00)00209-2, 2001.
- Kühni, A. and Pfiffner, O. A.: The relief of the Swiss Alps and adjacent areas and its relation to lithology and structure: Topographic analysis from a 250-m DEM, *Geomorphology*, 41(4), 285–307, doi:10.1016/S0169-555X(01)00060-5, 2001.
- Kühni, A. and Pfiffner, O. A.: Drainage patterns and tectonic forcing: A model study for the Swiss Alps, *Basin Res.*, 13(2), 169–197, doi:10.1046/j.1365-2117.2001.00146.x, 2002.
- Langebroek, P., Werner, M. and Lohmann, G.: Climate information imprinted in oxygen-isotopic composition of precipitation in Europe, *Earth Planet. Sci. Lett. - EARTH PLANET SCI LETT*, 311, doi:10.1016/j.epsl.2011.08.049, 2011.
- Lippitsch, R.: Upper mantle structure beneath the Alpine orogen from high-resolution teleseismic tomography, *J. Geophys. Res.*, 108(B8), 1–15, doi:10.1029/2002jb002016, 2003.
- Lyon-Caen, H. and Molnar, P.: Constraints on the deep structure and dynamic processes beneath the Alps and adjacent regions from an analysis of gravity anomalies, *Geophys. J. Int.*, 99(1), 19–32, doi:10.1111/j.1365-246X.1989.tb02013.x, 1989.
- Mancel, P. and Merle, O.: Kinematics of the northern part of the Simplon line (Central Alps), *Tectonophysics*, 135(4), 265–275, doi:10.1016/0040-1951(87)90111-9, 1987.
- Mancktelow, N. S.: Neogene lateral extension during convergence in the Central Alps: Evidence from interrelated faulting and backfolding around the Simplonpass (Switzerland), *Tectonophysics*, doi:10.1016/0040-1951(92)90358-D, 1992.
- Matter, A.: Sedimentologische Untersuchungen im östlichen Napfgebiet, *Eclogae Geol. Helv.*, 57(2), 315–428, doi:10.5169/seals-163142, 1964.
- Matter, A., Homewood, P., Caron, C., Rigassi, D., Van Stuijvenberg, J., Weidmann, M. and Winkler, W.: Flysch and Molasse of Western and Central Switzerland, *Geol. Switzerland, a Guid. B.*, (April 2016), 261–293, 1980.
- Mazurek, M., Hurford, A. J. and Leu, W.: Unravelling the multi-stage burial history of the Swiss Molasse Basin: integration of apatite fission track, vitrinite reflectance and biomarker isomerisation analysis, *Basin Res.*, 18(1), 27–50, doi:https://doi.org/10.1111/j.1365-2117.2006.00286.x, 2006.
- Methner, K., Campani, M., Fiebig, J., Löffler, N., Kempf, O. and Mulch, A.: Middle Miocene long-term continental temperature change in and out of pace with marine climate records, *Sci. Rep.*, 10(1), 1–10, doi:10.1038/s41598-020-64743-5, 2020.
- Mey, J. J., Scherler, D., Wickert, A. D., Egholm, D. L., Tesauero, M., Schildgen, T. F. and Strecker, M. R.: Glacial isostatic

- uplift of the European Alps, *Nat. Commun.*, 7(November), 1–10, doi:10.1038/ncomms13382, 2016.
- Mosbrugger, V., Utescher, T. and Dilcher, D. L.: Cenozoic continental climatic evolution of Central Europe, *Proc. Natl. Acad. Sci. U. S. A.*, 102(42), 14964–14969, doi:10.1073/pnas.0505267102, 2005.
- 720 Mulch, A.: Stable isotope paleoaltimetry and the evolution of landscapes and life, *Earth Planet. Sci. Lett.*, 433(Supplement C), 180–191, doi:10.1016/j.epsl.2015.10.034, 2016.
- Mulch, A. and Chamberlain, C. P.: Stable Isotope Paleoaltimetry in Orogenic Belts The Silicate Record in Surface and Crustal Geological Archives, *Rev. Mineral. Geochemistry - REV Miner. GEOCHEM*, 66(1), 89–118, doi:10.2138/rmg.2007.66.4, 2007.
- 725 Mulch, A. and Chamberlain, C. P.: Stable isotope paleoaltimetry: Paleotopography as a key element in the evolution of landscapes and life. in: *Mountains, Climate and Biodiversity*, Hoorn, C., Perrigo, A. & Antonelli, A. (eds.) Wiley, edited by A. Hoorn, C., Perrigo, A. & Antonelli, in: *Mountains, Climate and Biodiversity*, Hoorn, C., Perrigo, A. & Antonelli, A. (eds.) Wiley., 2018.
- Mutz, S. G., Ehlers, T. A., Werner, M., Lohmann, G., Stepanek, C. and Li, J.: Estimates of late Cenozoic climate change relevant to Earth surface processes in tectonically active orogens, *Earth Surf. Dyn.*, 6(2), 271–301, doi:10.5194/esurf-6-271-2018, 2018.
- 730 Pagani, M., Arthur, M. A. and Freeman, K. H.: Miocene evolution of atmospheric carbon dioxide, *Paleoceanography*, 14(3), 273–292, 1999.
- Peters, N. A., Huntington, K. W. and Hoke, G. D.: Hot or not? Impact of seasonally variable soil carbonate formation on paleotemperature and O-isotope records from clumped isotope thermometry, *Earth Planet. Sci. Lett.*, 361, 208–218, doi:10.1016/J.EPSL.2012.10.024, 2013.
- Pfiffner, O. A.: Evolution of the north Alpine foreland basin in the Central Alps (Switzerland)., *Forel. basins*, (December), 219–228, 1986.
- Pfiffner, O. A., Schlunegger, F. and Buitter, S. J. H.: The Swiss Alps and their peripheral foreland basin: Stratigraphic response to deep crustal processes, *Tectonics*, 21(2), 3-1-3–16, doi:10.1029/2000tc900039, 2002.
- 740 Poage, M. A. and Chamberlain, C. P.: Empirical relationships between elevation and the stable isotope composition of precipitation and surface waters: Considerations for studies of paleoelevation change, *Am. J. Sci.*, 301(1), 1–15, 2001.
- Poblete, F., Dupont-Nivet, G., Licht, A., Hinsbergen, D., Roperch, P., Mihalynuk, M., Johnston, S. T., Guillocheau, F., Baby, G., Fluteau, F., Robin, C., van der Linden, T., Ruiz, D. and Baatsen, M.: Towards interactive global paleogeographic maps, new reconstructions at 60, 40 and 20 Ma, *Earth-Science Rev.*, 214, 103508, doi:10.1016/j.earscirev.2021.103508, 2021.
- 745 Poulsen, C. J. and Jeffery, M. L.: Climate change imprinting on stable isotopic compositions of high-elevation meteoric water cloaks past surface elevations of major orogens, *Geology*, 39(6), 595–598, doi:10.1130/G32052.1, 2011.
- Poulsen, C. J., Pollard, D. and White, T. S.: General circulation model simulation of the $\delta^{18}\text{O}$ content of continental precipitation in the middle Cretaceous: A model-proxy comparison, *Geology*, 35(3), 199–202, doi:10.1130/G23343A.1,
- 750

2007.

Poulsen, C. J., Ehlers, T. A. and Insel, N.: Onset of convective rainfall during gradual late Miocene rise of the central Andes., *Science* (80-.), 328(5977), 490–493, doi:10.1126/science.1185078, 2010.

755 Pound, M. J., Haywood, A. M., Salzmann, U. and Riding, J. B.: Global vegetation dynamics and latitudinal temperature gradients during the Mid to Late Miocene (15.97-5.33Ma), *Earth-Science Rev.*, 112(1–2), 1–22, doi:10.1016/j.earscirev.2012.02.005, 2012.

Quade, J., Garzzone, C. and Eiler, J.: Paleoelevation Reconstruction using Pedogenic Carbonates, *Rev. Mineral. Geochemistry*, 66(1), 53–87, doi:10.2138/rmg.2007.66.3, 2007a.

760 Quade, J., Rech, J. A., Latorre, C., Betancourt, J. L., Gleeson, E. and Kalin, M. T. K.: Soils at the hyperarid margin: The isotopic composition of soil carbonate from the Atacama Desert, Northern Chile, *Geochim. Cosmochim. Acta*, 71(15), 3772–3795, doi:10.1016/j.gca.2007.02.016, 2007b.

Quade, J., Leary, R., Dettinger, M. P., Orme, D., Krupa, A., Decelles, P. G., Kano, A., Kato, H., Waldrip, R., Huang, W. and Kapp, P.: Resetting Southern Tibet : The serious challenge of obtaining primary records of Paleoelevation, *Glob. Planet. Change*, 191(April), 103194, doi:10.1016/j.gloplacha.2020.103194, 2020.

765 Risi, C., Bony, S. and Vimeux, F.: Influence of convective processes on the isotopic composition ($\delta^{18}\text{O}$ and δD) of precipitation and water vapor in the tropics: 2. Physical interpretation of the amount effect, *J. Geophys. Res. Atmos.*, 113(19), 1–12, doi:10.1029/2008JD009943, 2008.

770 Roe, G., Ding, Q., Battisti, D., Molnar, P., Clark, M. and Garzzone, C.: A modeling study of the response of Asian summertime climate to the largest geologic forcings of the past 50 Ma, *J. Geophys. Res. Atmos.*, 121, doi:10.1002/2015JD024370, 2016.

Rowley, D. B. and Garzzone, C. N.: Stable isotope-based paleoelevation, *Annu. Rev. Earth Planet. Sci.*, 35(January), 463–508, doi:10.1146/annurev.earth.35.031306.140155, 2007.

775 Rowley, D. B., Pierrehumbert, R. T. and Currie, B. S.: A new approach to stable isotope-based paleoelevation: Implications for paleoelevation and paleohypsometry of the High Himalaya since the late Miocene, *Earth Planet. Sci. Lett.*, 188(1–2), 253–268, doi:10.1016/S0012-821X(01)00324-7, 2001.

Schegg, R.: Coalification, shale diagenesis and thermal modelling in the Alpine Foreland basin: the Western Molasse basin (Switzerland/France), *Org. Geochem.*, 18(3), 289–300, doi:https://doi.org/10.1016/0146-6380(92)90070-E, 1992.

Schegg, R. and Leu, W.: Analysis of erosion events and palaeogeothermal gradients in the North Alpine Foreland Basin of Switzerland, *Geol. Soc. Spec. Publ.*, 141, 137–155, doi:10.1144/GSL.SP.1998.141.01.09, 1998.

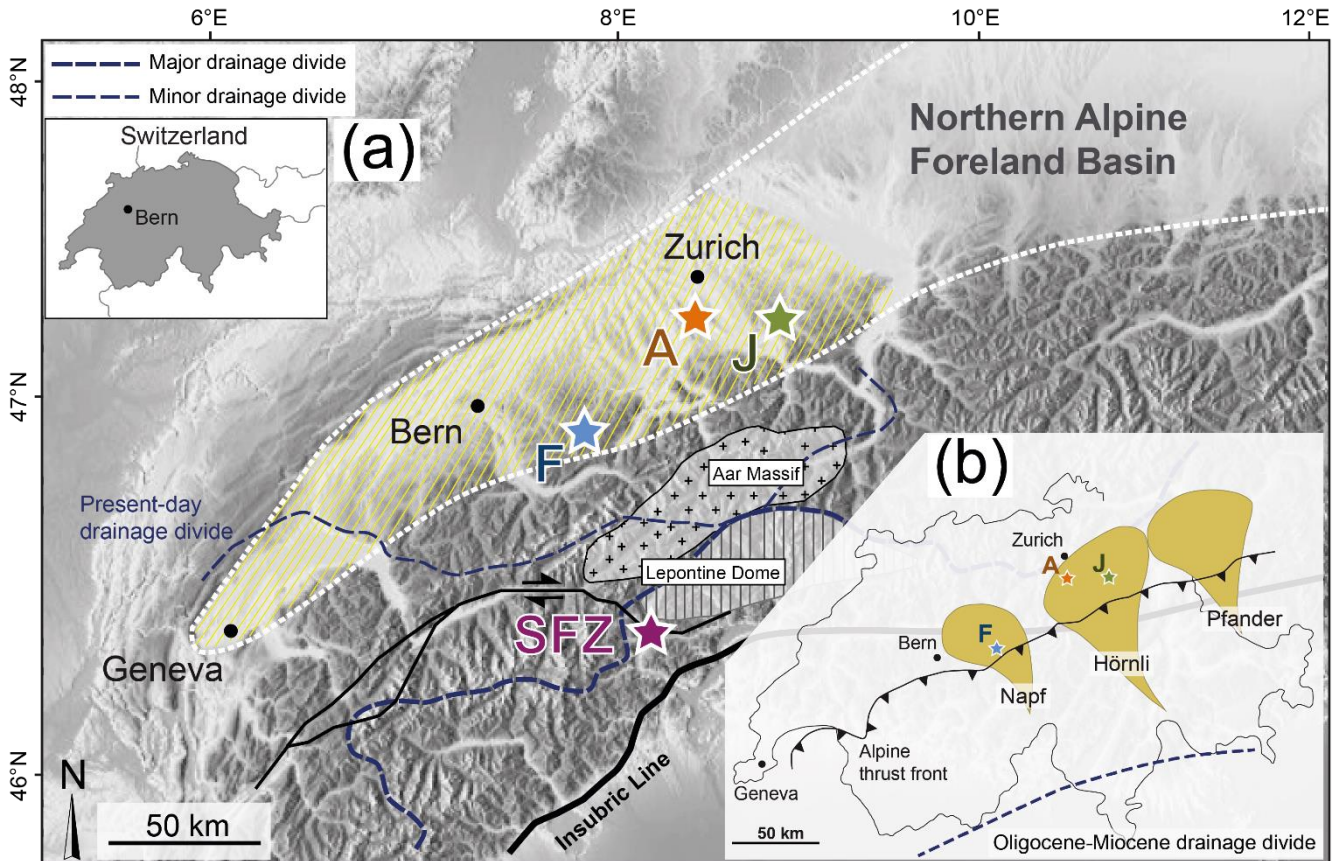
780 Schlunegger, F. and Kissling, E.: Slab rollback orogeny in the Alps and evolution of the Swiss Molasse basin, *Nat. Commun.*, 6(October), 1–10, doi:10.1038/ncomms9605, 2015.

Schlunegger, F. and Willett, S.: Spatial and temporal variations in exhumation of the central Swiss Alps and implications for exhumation mechanisms, *Geol. Soc. Spec. Publ.*, 154(January), 157–179, doi:10.1144/GSL.SP.1999.154.01.07, 1999.

Schlunegger, F., Burbank, D. W., Matter, A., Engesser, B. and Mödden, C.: Magnetostratigraphic calibration of the

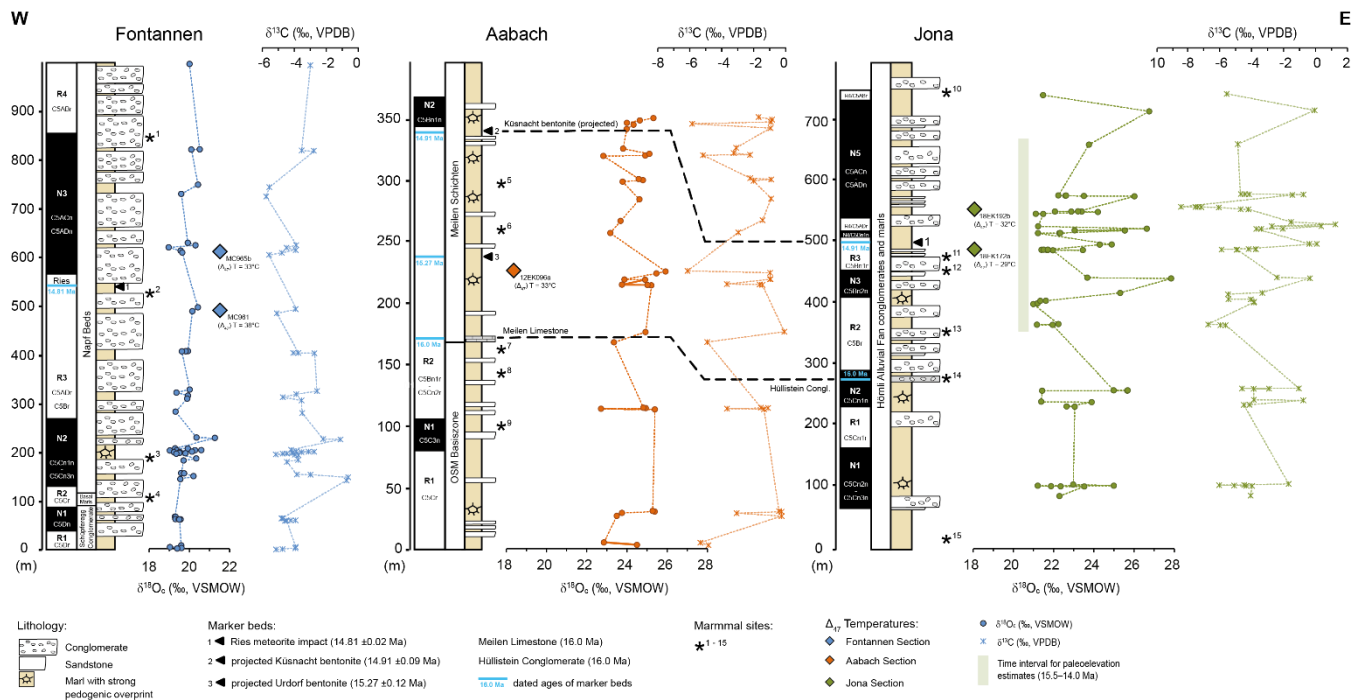
- 785 Oligocene to Middle Miocene (30-15 Ma) mammal biozones and depositional sequences of the Swiss Molasse Basin, *Eclogae Geol. Helv.*, 89(2), 753–788, doi:10.5169/seals-167923, 1996.
Schlunegger, F., Matter, A., Burbank, D. W., Leu, W., Mange, M. and Matyas, J.: Sedimentary sequences, seismofacies and evolution of depositional systems of the Oligo/Miocene Lower Freshwater Molasse Group, Switzerland, *Basin Res.*, 9(1), 1–26, 1997.
- 790 Schlunegger, F., Melzer, J. and Tucker, G.: Climate, exposed source-rock lithologies, crustal uplift and surface erosion: A theoretical analysis calibrated with data from the Alps/North Alpine foreland basin system, *Int. J. Earth Sci.*, 90(3), 484–499, doi:10.1007/s005310100174, 2001.
Schmid, S. M., Pfiffner, O. A., Froitzheim, N., Schönborn, G. and Kissling, E.: Geophysical-geological transect and tectonic evolution of the Swiss-Italian Alps, *Tectonics*, 15(5), 1036–1064, doi:10.1029/96TC00433, 1996.
- 795 Schmieder, M., Kennedy, T., Jourdan, F., Buchner, E. and Reimold, W. U.: A high-precision $^{40}\text{Ar}/^{39}\text{Ar}$ age for the Nördlinger Ries impact crater, Germany, and implications for the accurate dating of terrestrial impact events, *Geochim. Cosmochim. Acta*, 220, 146–157, doi:https://doi.org/10.1016/j.gca.2017.09.036, 2018.
Sewall, J. O. and Fricke, H. C.: Andean-scale highlands in the Late Cretaceous Cordillera of the North American western margin, *Earth Planet. Sci. Lett.*, 362, 88–98, doi:10.1016/j.epsl.2012.12.002, 2013.
- 800 Sharp, Z. D., Masson, H. and Lucchini, R.: Stable isotope geochemistry and formation mechanisms of quartz veins; extreme paleoaltitudes of the Central Alps in the Neogene, *Am. J. Sci.*, 305(3), 187–219, doi:10.2475/ajs.305.3.187, 2005.
Sheppard, S. M. F. and Gilg, H. A.: Stable isotope geochemistry of clay minerals, *Clay Miner.*, 31(1), 1–24, doi:10.1180/claymin.1996.031.1.01, 1996.
Siegenthaler, U. and Oeschger, H.: Correlation of ^{18}O in precipitation with temperature and altitude, *Nature*, 285(5763), 314–317, doi:10.1038/285314a0, 1980.
- 805 Stampfli, G. M., Mosar, J., Marquer, D., Marchant, R., Baudin, T. and Borel, G.: Subduction and obduction processes in the Swiss Alps, *Tectonophysics*, 296(1–2), 159–204, doi:10.1016/S0040-1951(98)00142-5, 1998.
Sturm, C., Zhang, Q. and Noone, D.: An introduction to stable water isotopes in climate models: benefits of forward proxy modelling for paleoclimatology, *Clim. Past*, 6(1), 115–129, 2010.
- 810 Stutenbecker, L., Tollan, P. M. E., Madella, A. and Lanari, P.: Miocene basement exhumation in the Central Alps recorded by detrital garnet geochemistry in foreland basin deposits, *Solid Earth*, 10(5), 1581–1595, doi:10.5194/se-10-1581-2019, 2019.
Tipple, B. J. and Pagani, M.: The early origins of terrestrial C_4 photosynthesis, *Annu. Rev. Earth Planet. Sci.*, 35, 435–461, doi:10.1146/annurev.earth.35.031306.140150, 2007.
- 815 Werner, M., Langebroek, P. M., Carlsen, T., Herold, M. and Lohmann, G.: Stable water isotopes in the ECHAM5 general circulation model: Toward high-resolution isotope modeling on a global scale, *J. Geophys. Res. Atmos.*, 116(15), 1–14, doi:10.1029/2011JD015681, 2011.
Willett, S., Beaumont, C. and Fullsack, P.: Mechanical model for the tectonics of doubly vergent compressional orogens,

820 Wright, J. D., Miller, K. G. and Fairbanks, R. G.: Early and Middle Miocene stable isotopes: Implications for Deepwater circulation and climate, *Paleoceanography*, 7(3), 357–389, doi:10.1029/92PA00760, 1992.



825 Figure 1: A) Topographic map of the Central Alps and its northern foreland basin (Swiss Molasse Basin; yellow hatched area) with sections Fontannen (F), Aabach (A), Jona (J) and the alpine Simplon Fault Zone (SFZ) sampling locality. Dashed blue lines mark the present-day drainage divide (after Schlunegger et al., 2007). B) Setting of the foreland basin sections within alluvial megafan deltas during the ~~middle-Middle~~ Miocene (15–14 Ma; drawn after Berger et al., 2005). The Fontannen section is located in the proximal part of the Napf megafan, while the Aabach and Jona sections represent a distal, respectively, a mid-fan setting in the Hörnli megafan. Dashed blue line indicates the Oligocene-Miocene drainage divide (after Schlunegger et al., 2007). The logo of Copernicus Publications.

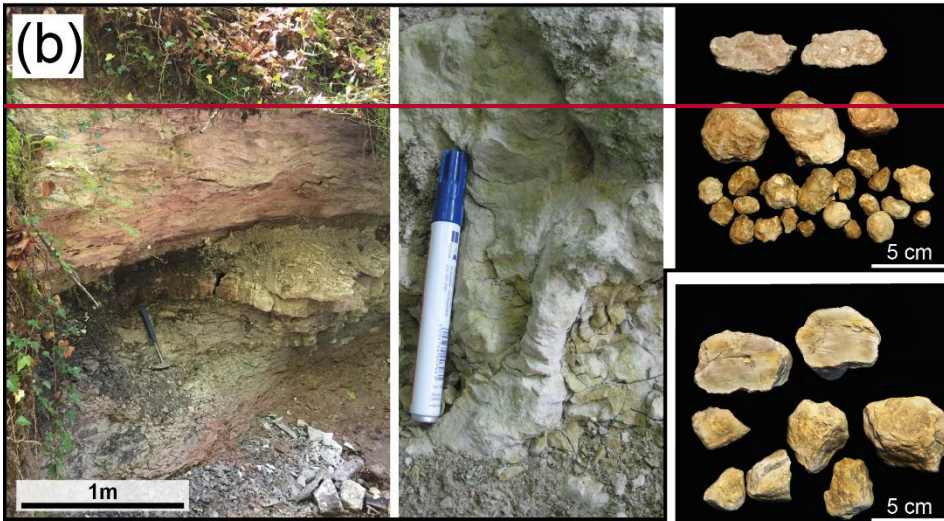
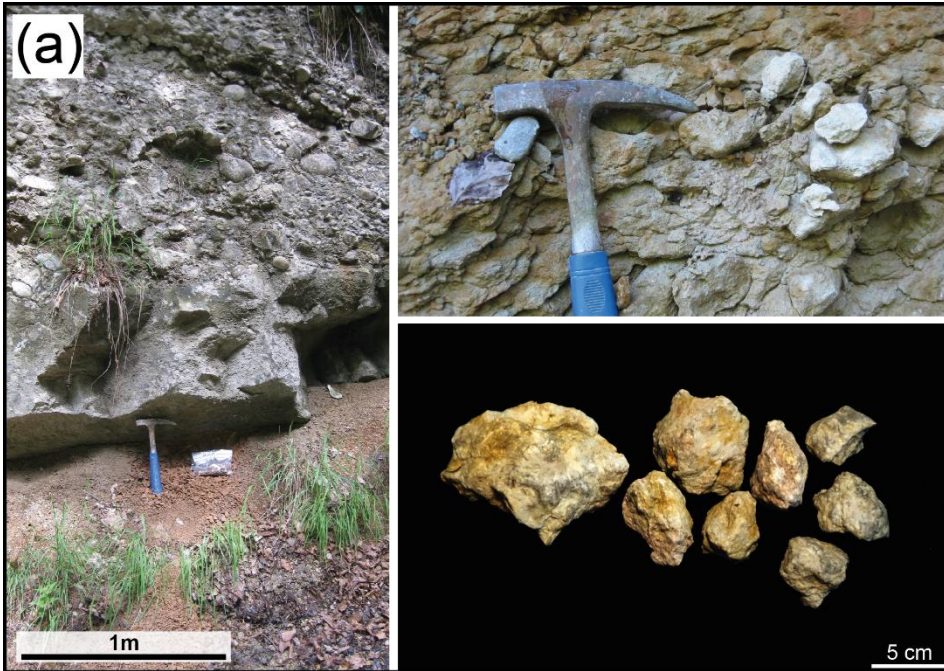
830

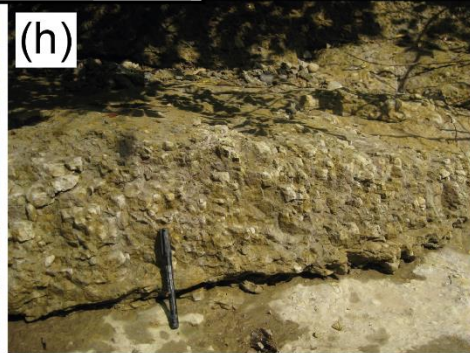
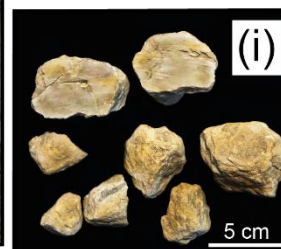
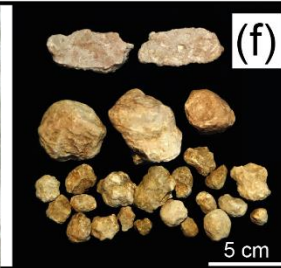


835 **Figure 2: Magnetostratigraphy and pedogenic carbonate $\delta^{18}\text{O}$ values for Swiss Molasse Basin sections. In total, 141 individual carbonate nodules were analyzed for Fontannen (Campani et al. 2012), respectively Jona, and 101 for Aabach. Only the mean value for each carbonate bearing horizon is shown here (Fontannen n=50; Jona n=56; Aabach n=34). $\delta^{18}\text{O}_c$ values are plotted next to their stratigraphic position. Assignment of polarity chrons to the ATNTS2012 according to (Kempf et al., 1997; Kempf and Matter, 1999; Schlunegger et al., 1996). Also shown is the stratigraphic position of important marker beds (Künascht bentonite, Meilen Limestone and its equivalent for proximal regions, the Hüllistein Conglomerate) with dated ages. Stars show locations of mammal sites (*1 projected Oeschgraben (MN 6), *2 Chätzloch (Frohberg, MN 5), *3 Vermes 1 (MN 5), *4 Tägermaustrasse (MN 4), *5 projected Hirschengraben (uppermost MN 5), *6 Tobelholz (middle/ upper MN 5), *7 Aabach 2 (middle MN 5), *8 Aabach 3 (middle MN 5), *9 Käpfnach-Rotwegstollen (middle MN5), *10 Bachtel-Ornberg (uppermost MN 6), *11 Frohberg (MN 5), *12 Tobel Hombrechtikon (upper MN 5), *13 Güntisberg (middle MN 5), *14 Martinsbrünneli (middle MN 5), *15 Hubertingen MN 4b). Mammal sites after (Kälin, 1997) and (Bolliger, 1992). Stratigraphic names after (Büchi, 1959; Kempf et al., 1997; Matter, 1964). Coloured diamonds represent obtained (Δ_{47}) temperatures for each section. Fontannen (Δ_{47}) temperatures from Methner et al. (2020). Each stratigraphic section covers an age range of ca. 17.5 Ma to 14 Ma (see Supplementary Material).**

840

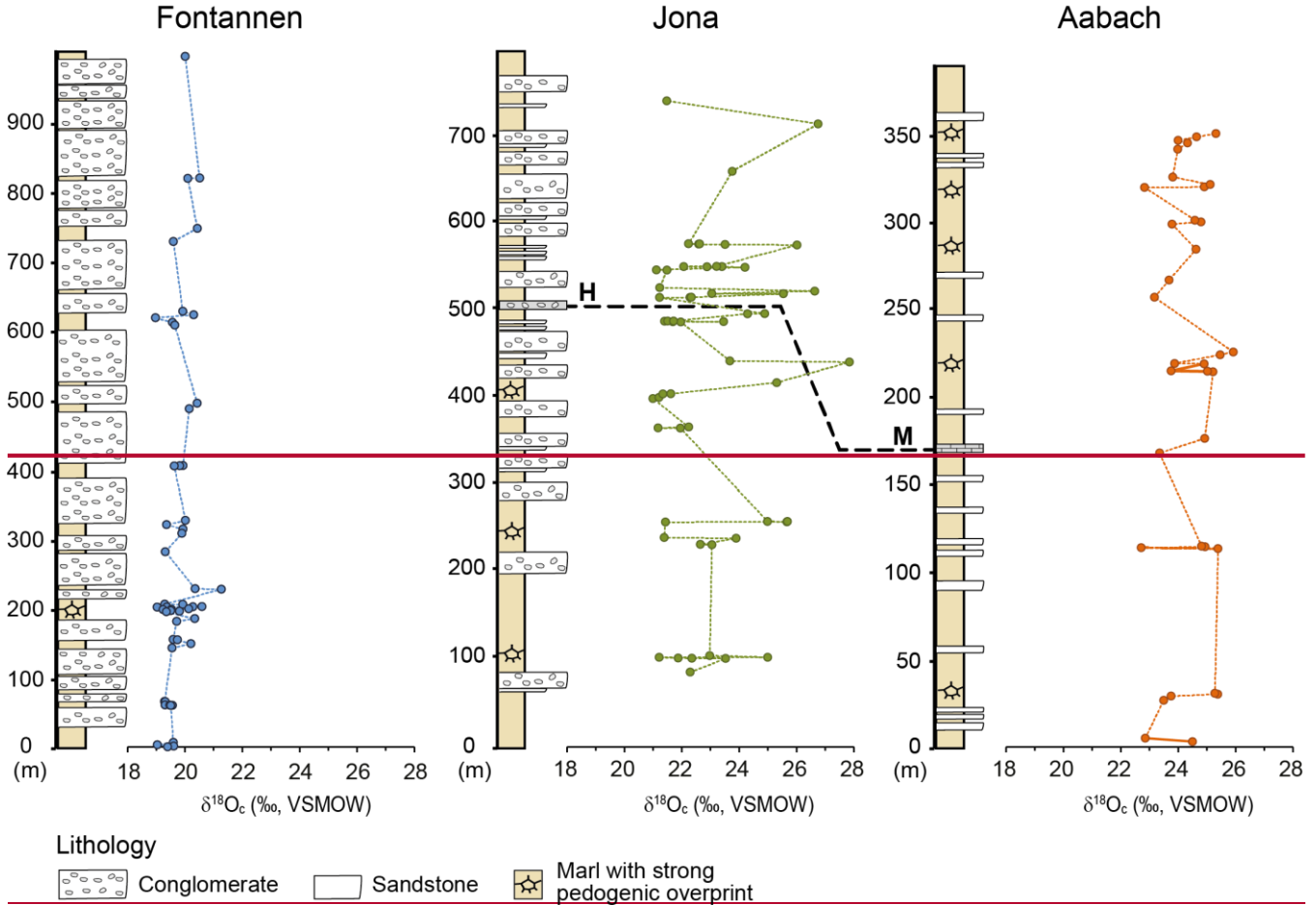
845





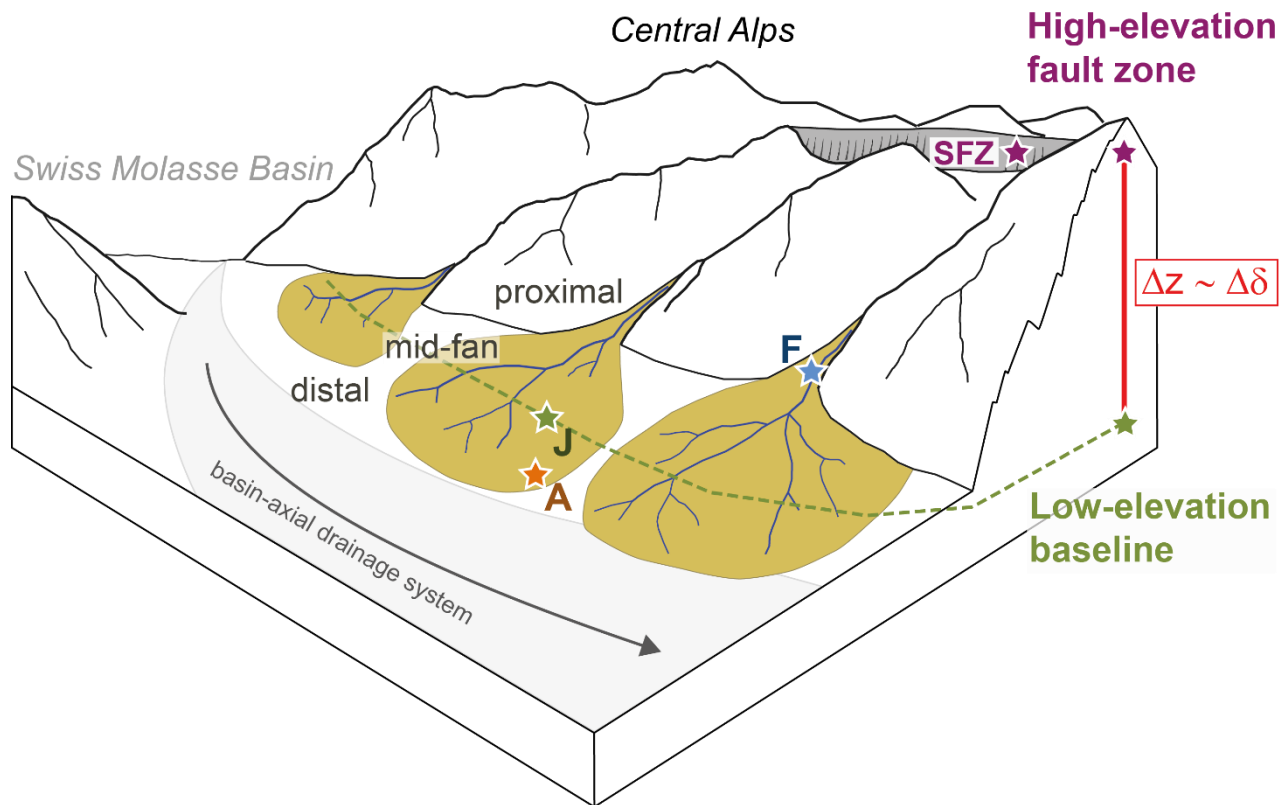
855

Figure 32: Outcrop conditions of the Swiss Molasse Basin sections and close-ups of sampled pedogenic carbonate nodules. **A)-C)** Proximal Fontannen section: ca. 1 m thick red paleosol profile overlain by massive sandstones and conglomerates (**left A**). Mottled paleosol with carbonate nodules (**top right B**) and **pedogenic carbonate nodules (C, DB-F)**. **D)-F)** Mid-fan Jona section: ca. 2 m thick paleosol profile with intense mottling intersected by river channel sandstone (**left D**). Ca. 20 cm long calcified root within a paleosol profile (**center E**) and **pedogenic carbonate nodules (F)**. **G-I)** Distal Aabach section: floodplain deposits with typical strong pedogenic overprint and intense mottling in yellow and red (**left G**). Paleosol abundant in carbonate nodules (**right H**) and **individual pedogenic carbonate nodules (I)**. Also shown are close-ups of individual pedogenic carbonate nodules for each section.



860

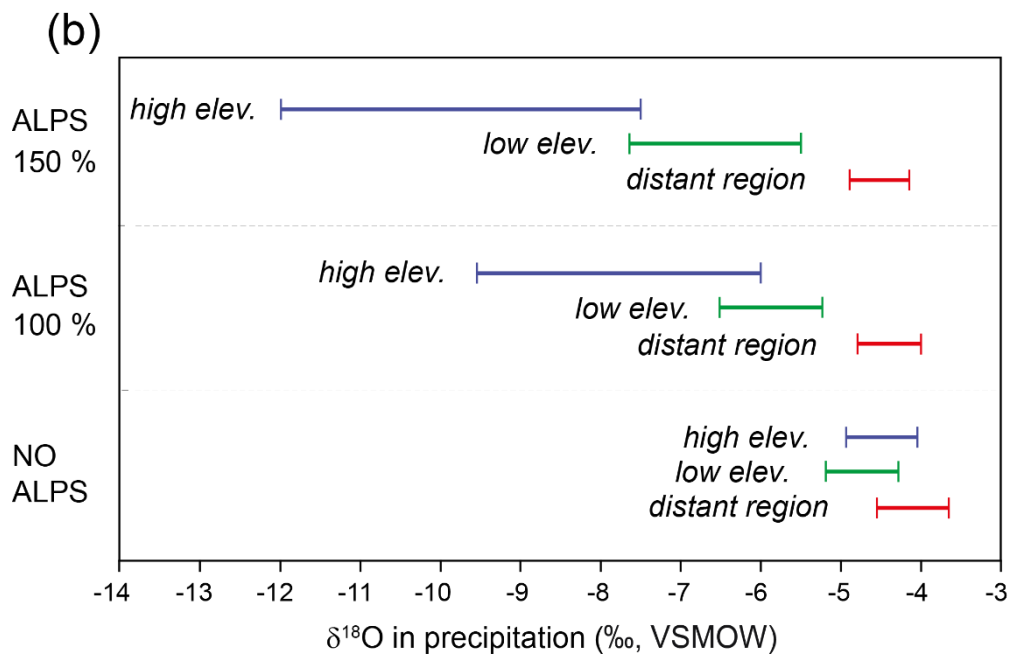
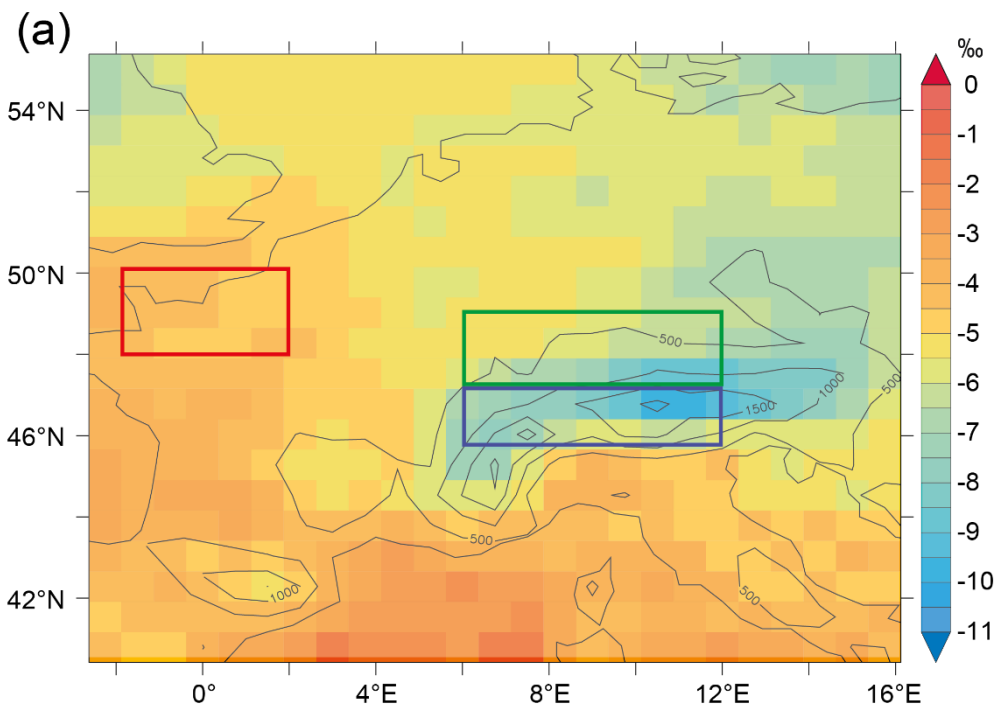
Figure 3: Pedogenic carbonate $\delta^{18}\text{O}$ values for Swiss Molasse Basin sections. In total, 141 individual carbonate nodules were analyzed for Fontannen, respectively Jona, and 101 for Aabach. Only the mean value for each carbonate bearing horizon is shown here (Fontannen $n=50$; Jona $n=56$; Aabach $n=34$). $\delta^{18}\text{O}_c$ values are plotted next to their stratigraphic position. Also shown is the stratigraphic position of the Hüllistein marker bed (H) and its equivalent for distal regions, the Meilen Limestone (M). Each stratigraphic section covers an age range of ca. 17.5 Ma to 14 Ma (see Supplementary Material).



865

Figure 4: Simplified sketch of the mid-Miocene Swiss Molasse Basin (SMB, 15–14 Ma) showing the distribution of alluvial megafans along the northern Alpine flank. The sampled sections are located at different paleoaltitudes within the megafan deltas which results in an internal elevation difference of ca. 300 (± 100) m (see text for discussion). We use the difference in precipitation $\delta^{18}\text{O}$ values ($\Delta\delta$) between the low-elevation SMB records (F, J, A, see Fig. 1) and the high-elevation (projected) Simplon Fault Zone (SFZ) to calculate the elevation difference (Δz) between these sites. Grey arrow depicts the paleo-discharge direction of the drainage system. Distribution of alluvial fans adopted from Berger et al. (2005).

870



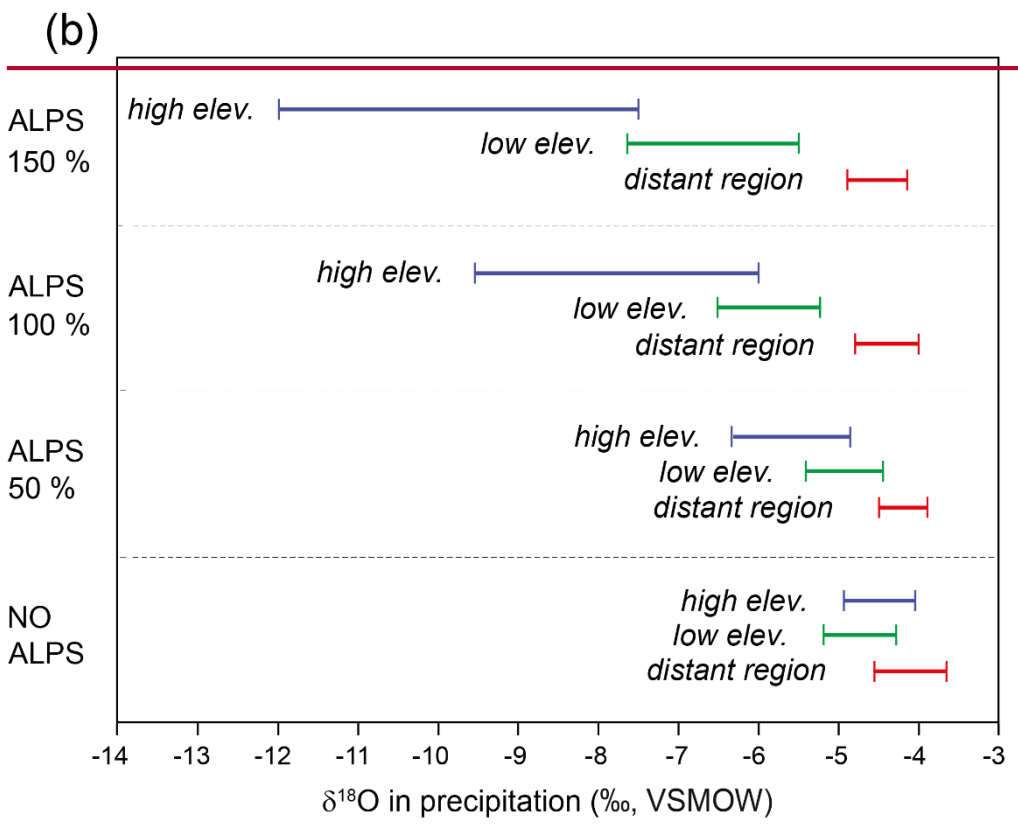
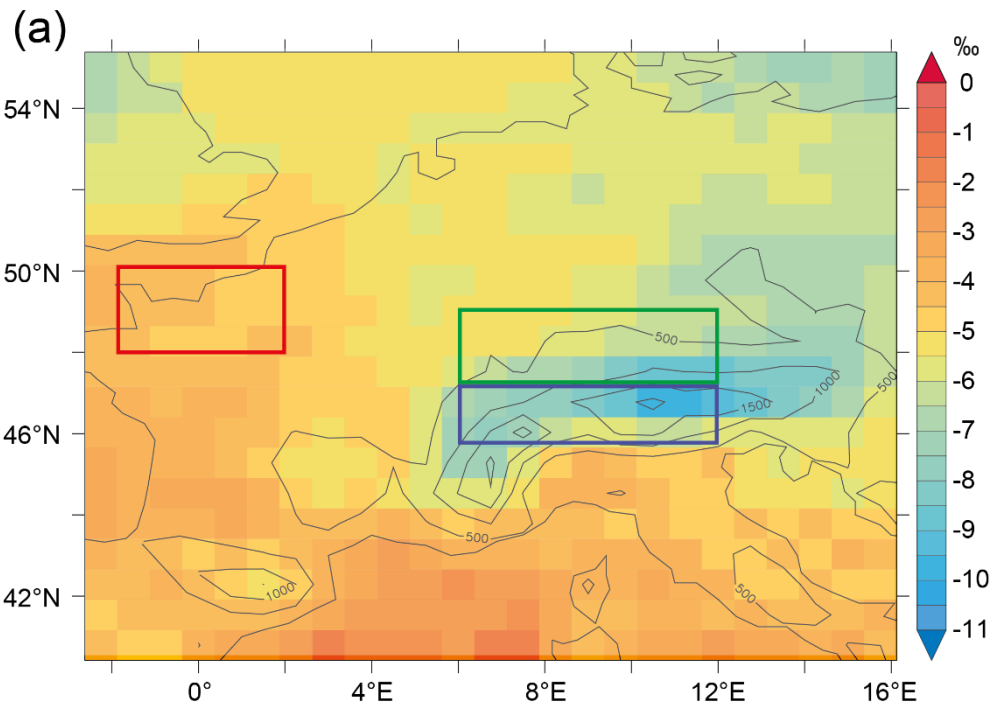
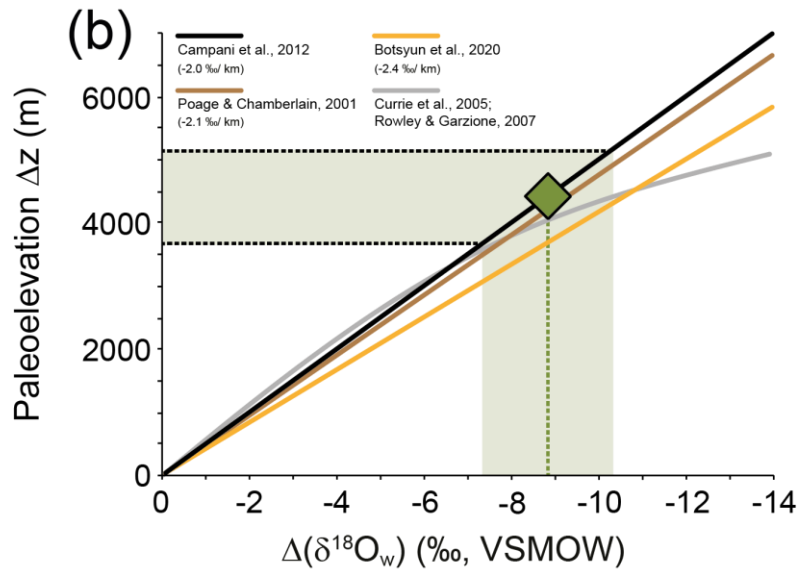
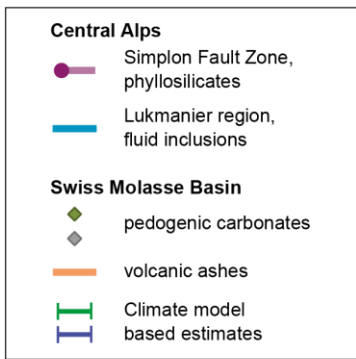


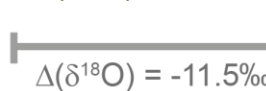
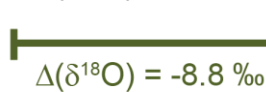
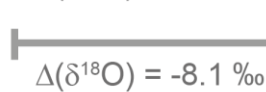
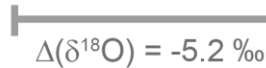
Figure 5: A) Spatial distribution of ECHAM5-wiso simulated mean JJA $\delta^{18}\text{O}_w$ for the preindustrial (Alps 100%) experiment for three regions: 1) within blue rectangular area for elevations over 1600 (high elev.), 2) within green rectangular area for elevations between 200 m and 600 m (low elev.), and 3) within red rectangular area for distant regions (distant region). B) Ranges of JJA $\delta^{18}\text{O}_w$ for Alps 150%, Alps 100%, ~~Alps 50%~~, and No Alps experiments for the selected regions (Botsyun et al., 2020).



(a) **Central Alps**

Lukmanier

SFZ



Swiss Molasse Basin



ash horizons

ECHAM5-wiso modeled $\delta^{18}\text{O}$

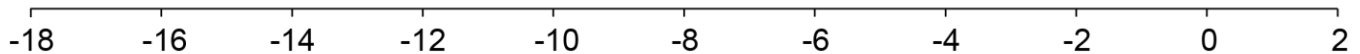
high elev.



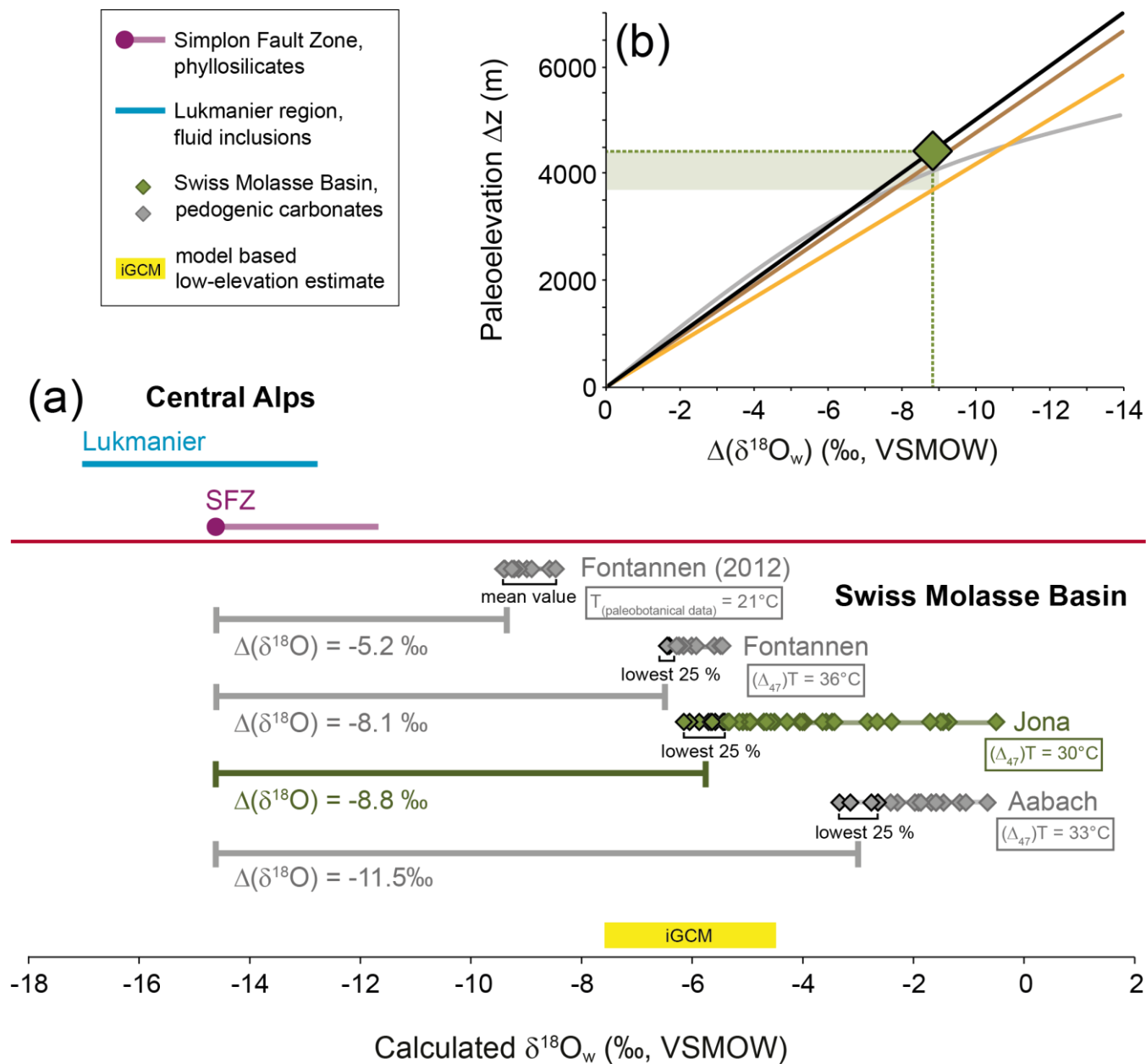
low elev.



Alps 150%



Calculated $\delta^{18}\text{O}_w$ (‰, VSMOW)



880 **Figure 6: Paleoelevation calculation of the Miocene Central Alps. A)** The difference of precipitation $\delta^{18}\text{O}_w$ values ($\Delta(\delta^{18}\text{O})$) between the high-elevation (Simplon Fault Zone, Campani et al., 2012) and the low-elevation sites (Fontannen, Jona, Aabach) is a measure of the respective elevation difference. We use a conservative approach to calculate the paleoelevation and only consider the lowest 25% $\delta^{18}\text{O}_w$ values ($n=10$) of the mid-fan situated Jona section as most suitable to serve as a low-elevation reference baseline (see text for discussion). Swiss Molasse Basin precipitation $\delta^{18}\text{O}_w$ values were calculated from pedogenic carbonate $\delta^{18}\text{O}_c$ values using carbonate clumped isotope (Δ_{47}) formation temperatures. The figure shows foreland data from this study (Fontannen, Jona and Aabach) and from Campani et al. (2012; Fontannen (2012)). Also shown are quartz vein fluid inclusion $\delta^{18}\text{O}_w$ values from the Lukmanier region (Swiss Alps; Sharp et al., 2005), $\delta^{18}\text{O}_w$ values derived from volcanic ashes (Bauer et al., 2016), and modeled range for high- and low-elevation precipitation $\delta^{18}\text{O}_w$ values for present-day Alps 50%, Alps 100%, and Alps 150% (ECHAM5-wiso iGCM run (Botsyun et al., 2020)). B) Jona $\Delta(\delta^{18}\text{O})$ value and inferred elevation differences ($\Delta z(\text{m})$) (light

885

890

895 horizontal green rectangle) based on different isotope lapse rates (black line: -2.0‰/ km (Campani et al., 2012); brown line: -2.1‰/ km (Poage & Chamberlain, 2001); yellow line: -2.4‰/ km (Botsyun et al., 2020); grey line: Currie et al., 2005; Rowley & Garzione, 2007) and the uncertainty in $\Delta(\delta^{18}\text{O})$ of $\pm 1.5\%$. The present-day Alpine $\delta^{18}\text{O}_w$ lapse rate of -2.0‰ ± 0.04 / km renders the Jona $\Delta(\delta^{18}\text{O})$ value of -8.8 $\pm 1.5\%$ to a paleoelevation difference of 4420 ± 770 m (dashed lines in ~~green~~black) between the foreland basin and the intra-Alpine SFZ.