

Structural complexities and tectonic barriers controlling recent seismic activity of the Pollino area (Calabria-Lucania, Southern Italy) – constraints from stress inversion and 3D fault model building.

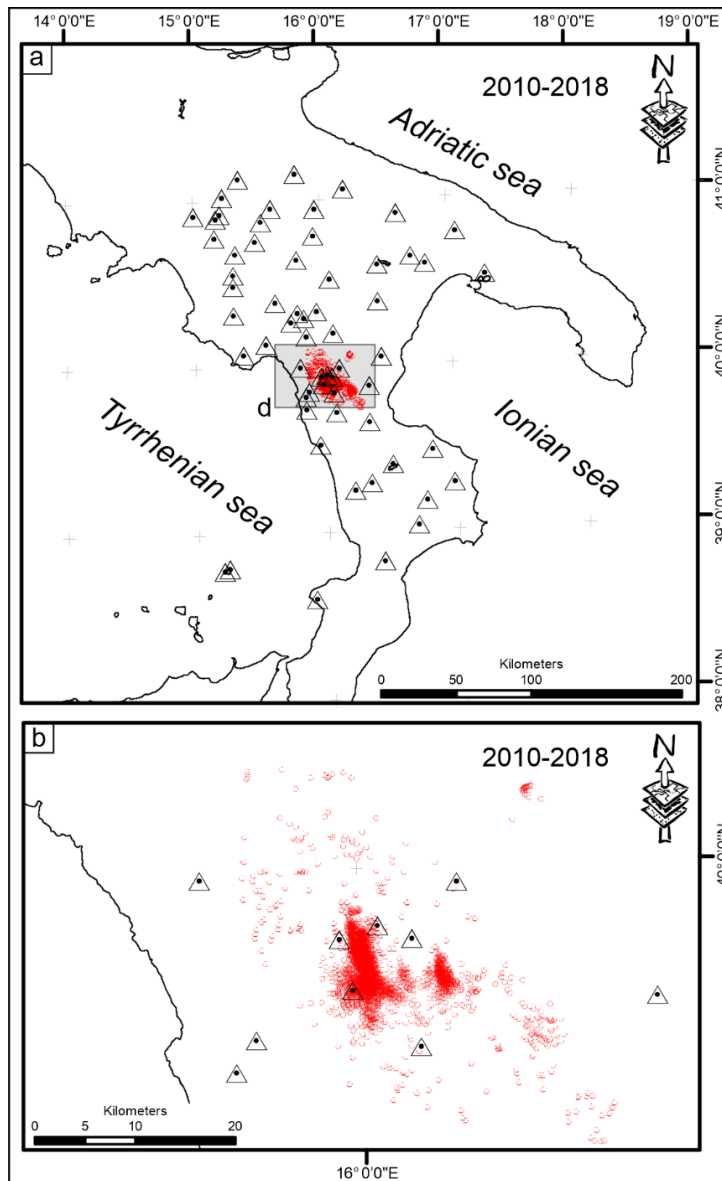
Daniele Cirillo^{1-2*}, Cristina Totaro²⁻³, Giusy Lavecchia¹⁻², Barbara Orecchio²⁻³, Rita de Nardis¹⁻², Debora Presti²⁻³, Federica Ferrarini¹⁻², Simone Bello¹⁻² and Francesco Brozzetti^{1-2*}

¹ Università degli studi “G. d’Annunzio” Chieti-Pescara, DiSPUTer, via dei Vestini 31, 66100 Chieti, Italy.

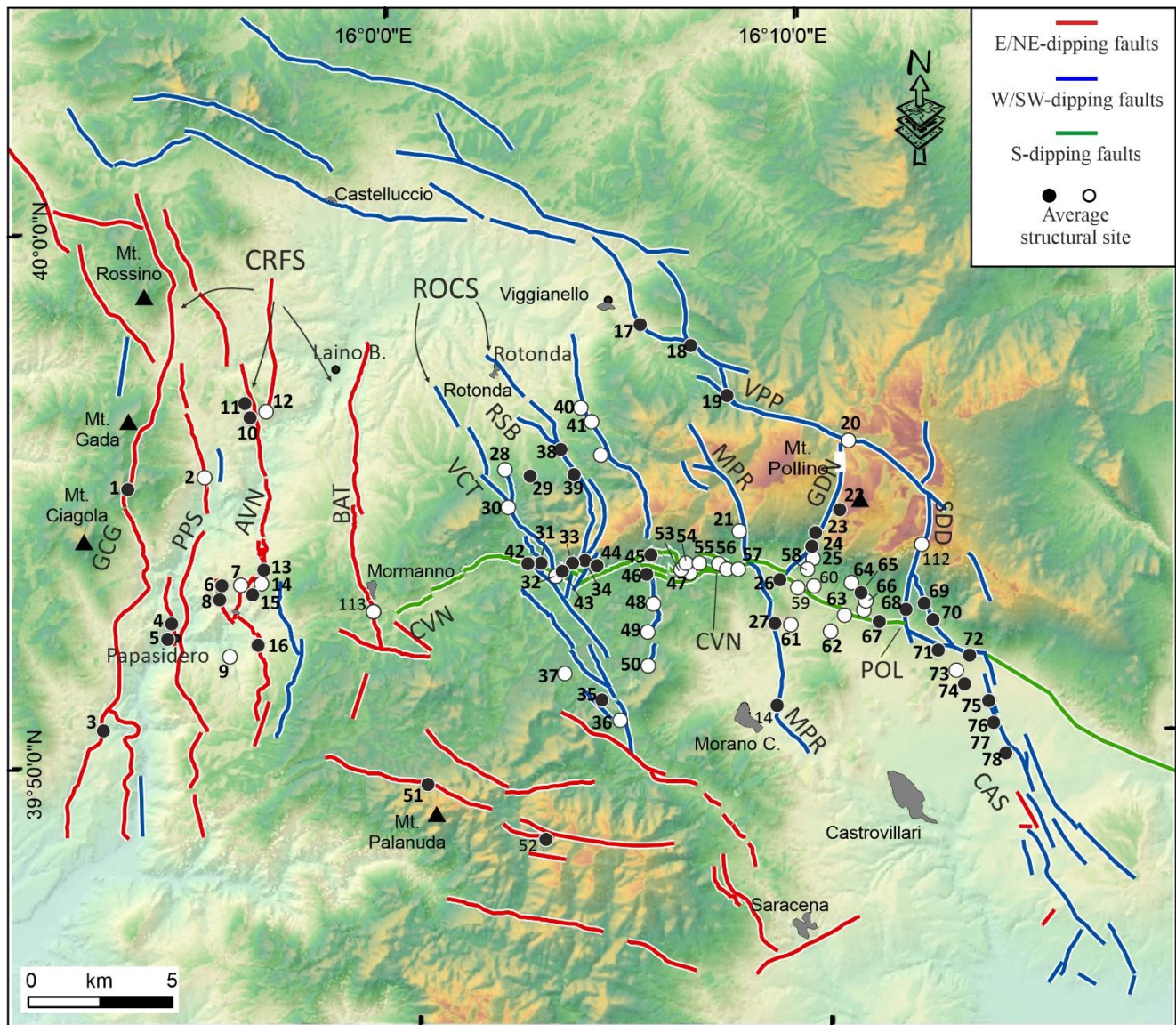
² CRUST Centro interUniversitario per l’analisi SismoTettonica tridimensionale, Italy.

³ Università degli studi di Messina, Dipartimento di Scienze Matematiche e Informatiche, Scienze Fisiche e Scienze della Terra – Viale F. Stagno D’Alcontres, 98166, Messina, Italy

*Correspondence to: d.cirillo@unich.it; francesco.brozzetti@unich.it



18
 19 **Supplementary Figure 1:** (a) location map with the temporary and permanent seismic stations (black triangles) used for
 20 hypocenter location. The 2010-2018 relocated epicenters (red circles) are also reported within the study area (grey rectangle).
 21 (b) enlarged view of the study area.



22

23 **Supplementary Figure 2:** Geological-structural map showing the main faults mapped on a 10 m-resolution DEM (Tarquini
 24 et al., 2012). The structural sites are divided into black circles if used for the pseudo-focal mechanisms reported in Figure 3 of
 25 the main text, and white circles. BAT= Battendiero fault; GCG= Gada-Ciagola fault; PPS= Papisidero fault; AVN= Avena
 26 fault; VCT= Fosso della Valle-Campoteneso fault; RSB= Rotonda-Sambucoso; CVN= Cozzo Vardo-Cozzo Nisco fault;
 27 MPR= Morano Calabro-Piano di Ruggio fault; VPP= Viggianello - Piano di Pollino fault; GDN= Gaudolino fault; POL=
 28 Pollino fault; CAS= Castrovillari fault; SDD= Serra Dolcedorme fault; PAC= Monte Palanuda – Campolungo fault; CPST=
 29 Castello Seluci-Piana Perretti fault.

30

31

32

33

34
35
36

Seismogenic BOX	Fault Name	Acronym	Length (km)	Av. strike (RHR)	Av. dip	Rake	Width (km)	Area (km ²)
1	Fosso della Valle - Campotenesese	VCT	15.16	150	70	-90	4	131
2	Rotonda - Fosso Sambucoso	RSB	12.82	160	65	-80	6	123
3	Morano Calabro - Piano di Ruggio	MPR	13.33	160	65	-90	3.5	153
4	Castrovillari	CAS	20.64	150	70	-85	2	286
5	Castelluccio	Cast	16.12	110	60	-90	2.5	120
6	Castello Seluci - Piana Perretti	CSPTa	11.04	115	60	-80	2.5	164
7	Timpa della Manca - La Fagosa	CSPTb	11.28	110	60	-80	2.6	171
8	Viggianello - Prastio	VPPa	8	130	60	-90	3.5	150
9	Vacquaro - Piano Pollino	VPPb	9.49	120	60	-90	3.6	129

37
38 **Supplementary Table 1:** Summary table of the seismogenic boxes' parameters.
39

40
41