

# Deep oceanic submarine fieldwork with undergraduate students, an immersive experience with the Minerve software

Marianne Métois<sup>1</sup>, Jean-Emmanuel Martelat<sup>1</sup>, Jérémy Billant<sup>2</sup>, Muriel Andreani<sup>1</sup>, Javier Escartín<sup>3</sup>, Frédérique Leclerc<sup>2</sup>, and ICAP<sup>4</sup>

<sup>1</sup>Laboratoire de géologie de Lyon, Université de Lyon, ENS de Lyon, CNRS, UMR5276 LGL-TPE, 69622 Villeurbanne, France

<sup>2</sup>Université Côte d’Azur, CNRS, Observatoire de la Côte d’Azur, IRD, Géoazur, 250 rue Albert Einstein, Sophia Antipolis 06560 Valbonne, France.

<sup>3</sup>Laboratoire de Géologie, UMR 8538, Ecole Normale Supérieure, PSL Research University, CNRS, Paris, France

<sup>4</sup>iCAP (Innovation, Conception, Accompagnement pour la Pédagogie), University Lyon 1 43 Bd du 11 novembre, 69622 Villeurbanne, France

**Correspondence:** marianne.metois@univ-lyon1.fr

**Abstract.** We present the content and scripting of an active tectonic lab-session conceived for third year undergraduate students studying Earth Sciences at *Observatoire des Sciences de l’Univers* of Lyon. This session is based on a research project conducted on the submarine Roseau active fault in Lesser Antilles. The fault morphology is particularly interesting to map as this structure in the deep ocean is preserved from weathering. Thus high resolution models computed from Remotely Operated Vehicle videos (ROV) provide exceptional educational material to link fault morphology and coseismic displacement. This class includes mapping exercises on GIS and virtual fieldwork to provide basic understanding of active tectonics, and in particular active fault morphology. The work has been conducted either in a full remote configuration via 3D online models or in virtual reality (VR) in a dedicated room using the Minerve software. During the VR sessions, students were either alone in the VR environment or participated as a group that included the instructor (physically in the classroom or remotely, from another location), which is to our knowledge one of the first attempts of this kind in France. We discuss on the efficiency of virtual fieldwork using VR, based on feedback from teachers and students. We conclude that VR is a promising tool to learn observational skills in Earth Sciences, subject to certain improvements which should be possible in the years to come.

## 1 Introduction

The seismic hazard in Metropolitan France is relatively low (e.g. Duverger et al., 2021). Some Mw6+ destructive earthquakes were registered in the past (such as the Lambesc, 1909 Provence earthquake (e.g. Baroux et al., 2003)), and the 2019 Mw5 Le Teil earthquake that reactivated a branch of the Cevennes fault system recall that seismic hazard is not absent (Ritz et al., 2020; Cornou et al., 2021). However, because Metropolitan France is a very slowly deforming region where deformation is diffuse (Masson et al., 2019), the morphological signature associated with potentially active faults is often subtle. Taking undergraduate students to the field to observe an active fault with clear morphological trace requires therefore to go abroad to more tectonically active areas (e.g., Italy, Greece), thus involving rather long and expensive field-work sessions.

It is generally admitted in the Geosciences community that fieldwork is essential in the Earth Sciences learning process (e.g. Boyle et al., 2007; Mogk and Goodwin, 2012; Petcovic et al., 2014). The observation of geological objects in situ, their 3D and 2D representation, are key to decipher their nature and geological history and field camps usually provide alternative and efficient ways to access a deeper and less theoretical learning that the one acquired in the classroom (Lonergan and Andresen, 1988). While often considered as attractive for students that appreciate facing the subjects of study and benefit from enhanced group cohesion (Boyle et al., 2007), fieldwork may be unfeasible (e.g., dangerous, remote or submarine sites, or otherwise unreachable for disabled people (e.g. Gilley et al., 2015)). We may require instead virtual imaging to make a proper fieldwork-like analyses or to access specific sites of interest. The development of 3D visualisation and virtual reality immersion in Geosciences offers an alternative path which is being explored and developed both in education and research (e.g. Cliffe, 2017; Jitmahantakul and Chenrai, 2019; Mead et al., 2019; Janiszewski et al., 2020; Klippel et al., 2019).

In Lyon, the ICAP service (*Innovation, Conception et Accompagnement pour la Pédagogie*) from Université Lyon 1 opened a dedicated room for virtual reality teaching during spring 2020, equipped with 10 Oculus Rift S headsets connected to desktop computers, an interactive white board and collaborative facilities, that include multiple screen sharing (Mersive Solstice system, see <https://virtuallab.univ-lyon1.fr/>). Simultaneously, a team of researchers involved in projects aiming at understanding the active tectonics of the French Lesser Antilles (Escartín et al., 2016; Leclerc et al., 2016; Istenič et al., 2020) developed an interactive free and open-source software (Minerve, see Billant et al., 2019) to collaborate on very high resolution (~1m to 10cm) DEM and DOM (Digital Elevation and Digital Outcrop Models) of the submarine active normal Roseau fault scarp that was reactivated during the 2004 Les Saintes earthquake (Mw 6.3) (Escartín et al., 2016).

These submarine studies provided a unique opportunity to bring our students to the field, at 1200m below sea level, through virtual reality, and we describe this experiment in this paper.

## 2 Digital Outcrop Models visualization : from research to teaching

During the 2013 ODEMAR and 2017 SUBSAINTES cruises of the Flotte Océanographique Française (Escartín and Andreani, 2013; Escartín et al., 2017), the Roseau fault, that has a maximum vertical relief of 200 m, was locally imaged optically with the Remotely Operated Vehicle (ROV) VICTOR, complementing to Autonomous Underwater Vehicle (AUV) microbathymetric surveys (Escartín et al., 2016; Istenič et al., 2020; Hughes et al., 2021). This deep-sea ROV acquired high resolution videos at the base of the fault scarp, and along vertical transects of the fault plane, to study the rupture associated with this 2004 earthquake. Georeferenced and scaled DOMs were calculated by applying and developing Structure from Motion Techniques on the videos (Istenič et al., 2020); see also <https://doi.org/10.17882/84249> and <https://doi.org/10.17882/79217>. In addition to these ROV optical survey, the Autonomous Underwater Vehicles AsterX (Ifremer, France) and Abyss (GEOMAR, Germany) acquired near-bottom high resolution bathymetric data allowing to generate 1m-resolution DEMs. Both the optical and the high-resolution acoustic data were used to describe and quantify the coseismic displacement of the 2004 event, and to better understand and quantify the submarine landscape evolution processes that shape the submarine fault morphology (Escartín et al., 2016; Hughes et al., 2021).

However, existing software allowing to work simultaneously on DEMs and DOMs are scarce, [usually non open-source](#), or ill-suited as they often lack georeferencing (e.g., Meshlab). Several of these systems also allow the user to interact with the 3D data on screens only, and not in a VR environment (e.g., Matlab, QPS Fledermaus, Matisse (Arnaubec et al., 2021)), among other limitations. Therefore, to precisely analyze and [inspect structures](#) from 3D models, and in this case the fine scarp topography and texture of a fault rupture underwater, the Minerve Virtual Reality software was developed (Billant et al., 2019). Minerve is intended to be used as a quantifying tool, and provided as a free and open source software ([FOSS](#)) [which allows easy distribution in the teaching and research communities](#). In Minerve, the user can move freely in a georeferenced space at 1:1 scale. The tools allow measuring strike, dip, rake, and distances, and mapping geological features that can be exported in GIS-like format for further work. Lastly, several users can [meet remotely](#) and collaborate in the same VR environment, allowing team work, or facilitating training and teaching. The possibilities of interaction with the 3D models offered by Minerve are key skills that students in Geosciences should master at [the end of the undergraduate third year](#).

[The](#) Minerve software was used to perform a paleo-seismological study of the Roseau fault outcrops (Billant et al., 2018). Although the fault was imaged in 2013, 13 years after the earthquake, the morphology and visual texture of the coseismic markers are astonishingly well preserved since at this oceanic depth (~1200m) weathering and sedimentation rates are very low (Escartín et al., 2016), and constitute text-books normal fault outcrops. Such markers are much more ephemeral in subaerial environments. For instance, light coseismic ribbons at the base of darker cumulative scarps [usually disappear rapidly](#) inland while the color change is still clearly visible along the Roseau fault. Several markers of pre-seismic seafloor levels imprinted on the fault mirror, such as thin lines of sediment [stuck](#) on the fault mirror, are also preserved at different elevations. This makes the Roseau fault outcrops unique to discuss [the](#) seismic cycle as well as the tectonic and submarine surface processes interaction, especially [as a first contact with active tectonics](#).

### **3 Experience design: an introduction to active tectonics**

The lab session presented in this study has been built for third year undergraduate geosciences students (L3), and has been tested by students following the General Geology undergraduate program in Université Lyon 1 and École Normale Supérieure de Lyon. It aims at providing them with basic understanding of active tectonics in the frame of a [much](#) more general course on “Structural Geology and Tectonics”. The lab session is associated with a 3 hours lecture on seismic cycle, scaling laws, and morphology of active faults. At the end of the course unit, the students can be evaluated on their ability to (i) [understand tectonic](#) context based on fault maps, focal mechanisms, earthquake catalogues and DEM, (ii) estimate a recurrence time for a given fault based on historical earthquake timeline and tectonic strain rate, (iii) estimate the maximum magnitude and type of earthquake that could generate a fault based on the scarp morphology, the length of the fault, and the standard scaling laws. [Because of the wide variety of topics covered by the course, the course unit assessment may or may not include active tectonics each year. Because of the pandemics and student’s difficulties during this period, we focus our efforts on the set up of virtual fieldwork themselves. The assessment strategy remains to be properly settled \(see section 4\).](#)

The teaching sequence, adapted for groups of up to 12 students, starts by mapping exercises and [understanding the tectonic context](#) using vector and raster images gathered on a GIS project [on the free and open source QGIS software](#). After identifying potential candidate faults for the 2004 Les Saintes rupture at a large scale using a 10m resolution DEM covering the whole fault system (Deplus and Feuillet, 2010; Leclerc et al., 2016), students ideally switch to VR immersion for a finer analysis using 1m resolution DEM and the cm resolved DOMs. Students' feedback was collected immediately after the lab session via an online inquiry, and [its analysis](#) will contribute to future improvements of both the virtual fieldwork for the students, and the Minerve software itself (ergonomics, functionalities, tools).

Because of the Covid-19 sanitary restrictions, we adapted the first session conducted in spring 2020 during full lockdown in France in a 100% virtual lab-session. In spring 2021 during partial lockdown, we conducted the sessions at the university with 4 reduced groups composed of 4 to 6 students each, during short 2-hour sessions, including 1h dedicated to VR fieldwork.

### 3.1 Using GIS tools to analyze the tectonic context and geomorphology

Geographical Information Systems (GIS) are now used in a very wide variety of fields, including Earth Sciences. This lab-session is the first contact for the third-year undergraduate students with GIS software and aims at introducing basic digital mapping tools and familiarizing the students with the tectonic context. The [free and open-source QGIS software](#) (QGIS Development Team, 2021) was used during our courses.

In addition to standard documents extracted from the scientific bibliography (context figures extracted from (Feuillet et al., 2002; Leclerc et al., 2016) and USGS description of the 2004 Les Saintes mainshock including focal mechanism and intensity map, see <https://earthquake.usgs.gov/earthquakes/eventpage/usp000d8w3/executive>), students are provided with a zip file including a QGIS project file and associated layers (provided as supplementary information). The project file can be opened directly by QGIS (version >2.7 [in this work](#)) [requiring no](#) manual tuning of projection parameters and symbology or loading of additional layers (operations that students do not yet know how to perform). The project includes vector and raster layers that are listed in table 1.

As a first step, students are asked to describe the overall tectonic context (plates in contact, type of plate boundaries, expected long-term motions) and to discuss the occurrence of a major normal-fault earthquake in a context of subduction, based on the standard documents provided. They are then guided through the QGIS project to have a closer look to the seismicity catalog, and to identify the 2004 sequence via simple requests on the attribute table (sorting, request on attribute value, etc). [Guidance on this first use of SIG software is provided via online discussions on the Discord app forum and teachers-made video tutorials in the 100% remote strategy while oral explanations are provided in the classroom for the two other strategies.](#)

As a second step, students work on the interpretation of the shaded and textured 10m local DEM. They explore the DEM via the “identify features” tool to get absolute bathymetry value at each pixel, and the “Terrain Profile” additional plugin (<https://github.com/PANOimagen/profiletool>) that allows on-the-fly drawing of topographic profiles (see figure 1). [This additional plugin is activated directly by the students via the Manage and Install Plugin window as it is included in the Qgis Official Plugin Repository.](#) Bathymetric profiles perpendicular to the Roseau fault system can be easily interpreted as representative of an active graben since cumulative fault scarps are very well preserved. Students are asked to use drawing tools (line, polygons)



Name	Type	Description
Seismic catalog	vector, points	2004-01 to 2016-12 regional seismicity including the Les Saintes mainshock and aftershock sequence ( $0 < M_w < 7.5$ ). Extracted from IPGP's seismological and volcanological observatories datasets, <a href="http://volobsis.ipgp.fr">http://volobsis.ipgp.fr</a> (Bazin et al., 2010)
Plate boundaries	vector, lines	Plate boundaries location and style (Bird, 2003, and <a href="https://github.com/fraxen/tectonicplates">https://github.com/fraxen/tectonicplates</a> )
ROV Path	vector, points	Position of the ROV over time
DEM 10m	raster	bathymetry at 10 m resolution from several cruise surveys; in this article we provide instead the bathymetry grid from (Deplus and Feuillet, 2021), which has a 25m resolution, and was also acquired during the Bathysaintes cruise (Leclerc et al., 2016; Deplus and Feuillet, 2010)
DEM shadow	raster	Shadow derived from the DEM
DEM texture	raster	Texture derived from the DEM
Open Street Map	XYZ tile	Standard background OSM provided with QGIS

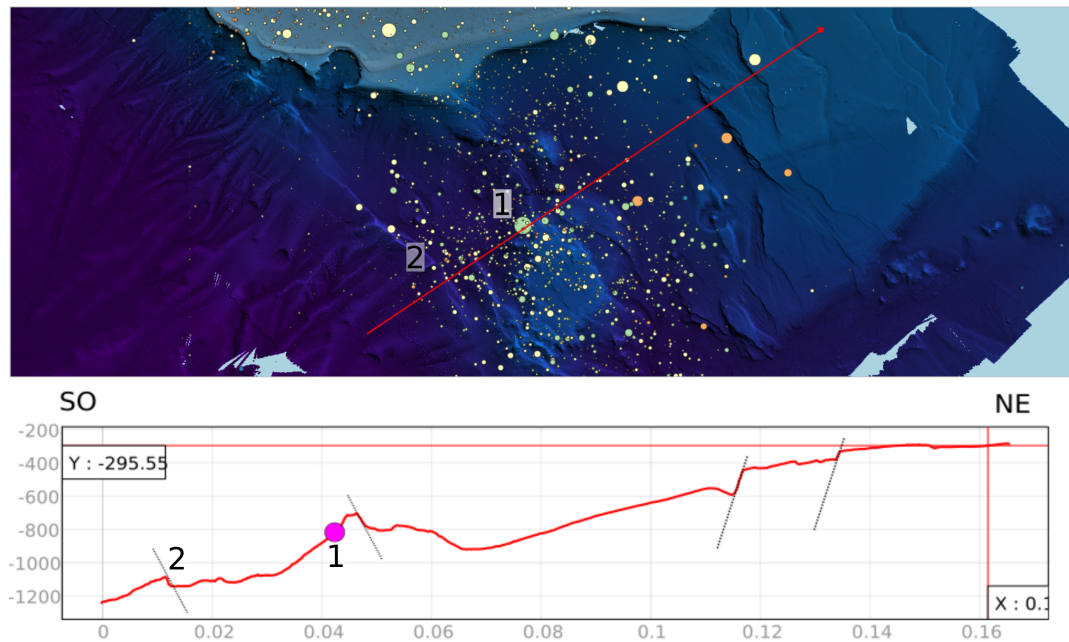
**Table 1.** Description of the layers imported in the QGIS project (see supplementary material)

120 to provide a simplified structural map of the area including active faults, volcanoes and reef plateau (figure 2). Doing so, they are required to [reflect on the nature of the relationship between these structures](#) and propose a chronology for their setting. [After a short briefing on how to use the layout manager included in QGIS to produce simple maps and associated captions](#), the students can finalize their work in the form of a synthetic and commented map.

Once this mapping exercise is over, students are asked to use their morphological observations to propose a fault as the best  
125 candidate for hosting the 2004 Les Saintes event [during a class discussion](#). To do so, they are required to [recall lecture material to remember that](#) (i) such a large earthquake ( $M_w 6.3$ ) requires a  $\sim 15$ km long fault segment to rupture if agreeing with standard scaling laws, (ii) the epicentral location is often shifted from the surface fault trace due to fault dip and depth of the rupture (here 12km) and therefore (iii) have to take into account [a fault dip, in theory between 60-65° for normal faults](#) (Anderson, 1951; Olive and Behn, 2014). All together, these parameters should lead students to conclude that detailed submarine fieldwork  
130 should be conducted on the Roseau fault to look for a fresh scarp.

### 3.2 [In the field](#) : virtual reality and 3D models

Before [accessing](#) the virtual field, students are provided with a excerpt of the raw video taken by the ROV during the SUB-SAINTEs cruise (ROV Dive 563), from which the detailed DEM is built (see <https://www.youtube.com/watch?v=TV3TUeRfxoc>). This video enables to discuss the technical difficulties that arise when doing submarine exploration. In addition to the absence  
135 of a landscape view that provides a general reference to the user, these data illustrates several limiting factors: restricted field of view, poor visibility due to sediment particles, artificial lighting that is thus distance-dependant, no direct scaling, difficulties

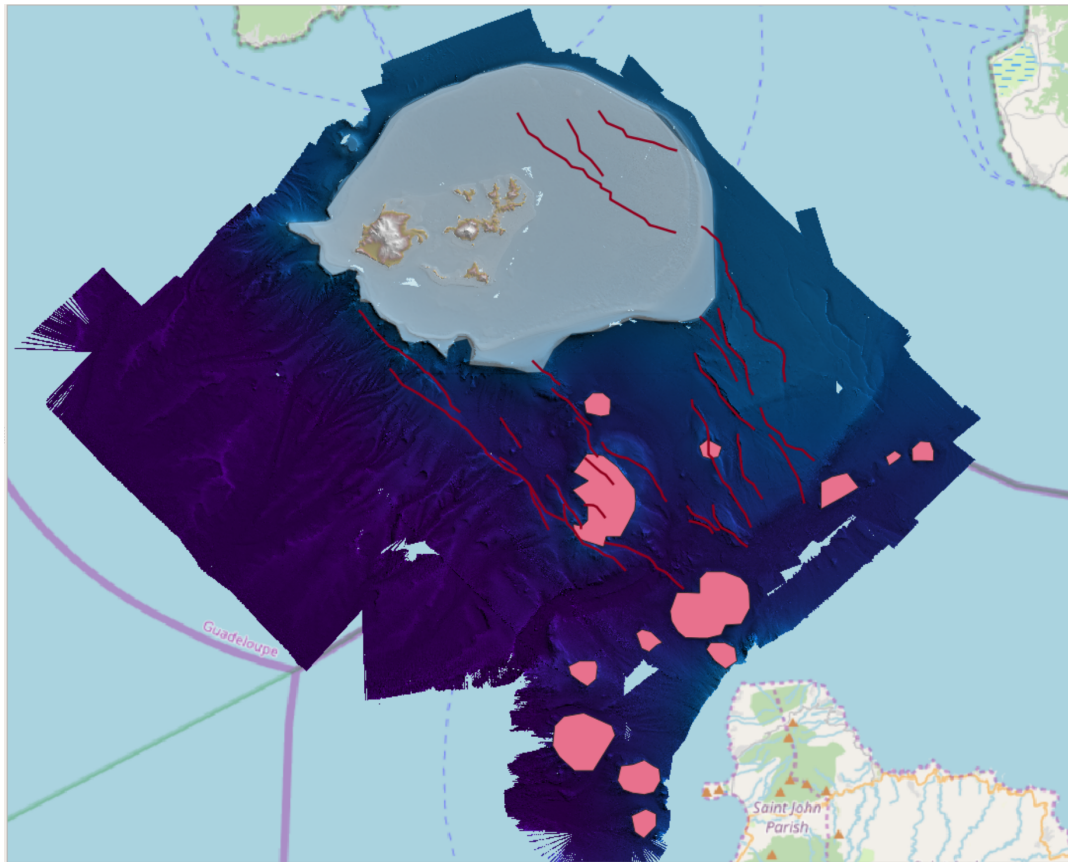


**Figure 1.** Snapshot of the QGIS desktop showing an example of interpretation by a student of a bathymetric profile (bottom panel) crossing the normal fault system perpendicularly (red line on the upper panel map) using the Terrain Profile tool. The student has represented supposed normal fault planes with dashed line and the mainshock epicenter with purple dot (1). The Roseau fault is indicated both in map and profile views (2).

in orientation due to camera and vehicle motion [and lack of external references](#), no GPS-positioning etc (Istenič et al., 2020). At the same time, some advantages of submarine exploration and field work can also be pointed out, such as the very limited erosion rates and good preservation of [submarine](#) structures, and the accessibility to the outcrop as is not covered by vegetation, as on-land.

With the virtual fieldwork, the students' goals are: describing and identifying the morphology associated with the active fault, measuring the last coseismic displacement on fault scarps, and estimate the moment magnitude of the last earthquake, mapping the fault, and understanding the erosive and sedimentary processes interacting with tectonics (dejection cones, roughness of the scarp, etc). Students ultimately propose scenarios of fault behavior during the seismic cycle, [and of long-term fault scarp evolution](#).

We have tested three different teaching strategies pictured on figure 3. In the first strategy, [named](#) "100% remote", students work from home on their own laptop during the entire session. They are connected to a dedicated voice channel on a Discord server hosting the other students and the teachers. The fieldwork is conducted based on a short portion of the 3D DEM/DOM (centimetric resolution) of the Roseau scarp loaded in degraded resolution (50 Mb in total size, presenting a quarter of the complete model at less than a quarter of its initial resolution unlike explored in other strategies) on a Sketchfab account (see

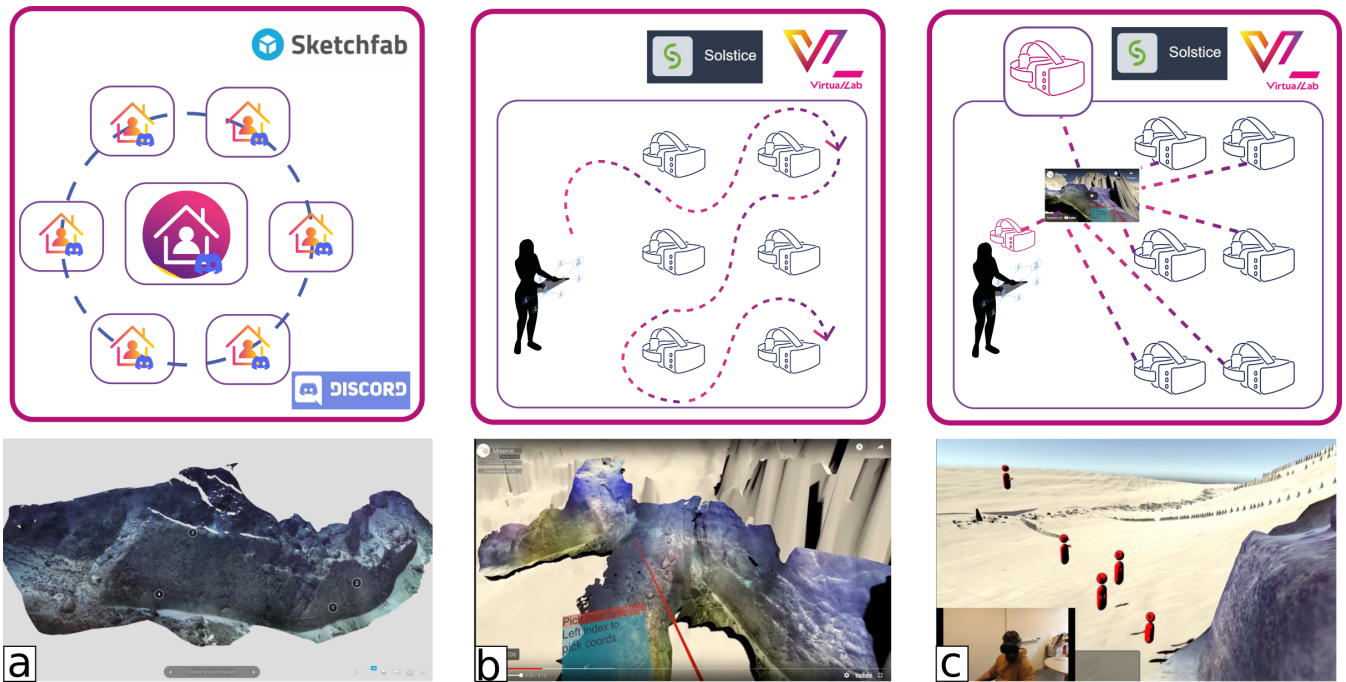


**Figure 2.** Snapshot of the QGIS desktop showing an example of expected first-order interpretation of the 10m DEM using QGIS drawing tools. The Les Saintes reef plateau is contoured in transparent white, submarine volcanoes in pink, and active faults scarp in red. Erosional features like canyons could also be mapped since they are often detected by students and may be misidentified as tectonic scarps.

<https://sketchfab.com/3d-models/la-rf-fpa-85002c5cd5f54a8fbeb736576b7d9e91>). Few annotations are added to the model in order to discuss some specific points with the students and provide a rough estimate of the outcrop's scale.

In the second strategy, named “Alone in the field” or “single-user mode”, the students are present on the same classroom but separated in two different groups and sessions. They are alone in the virtual field and guided by a teacher from outside the VR environment in the Univ. Lyon 1 virtual lab (see figures 3-b and 4). The teacher can follow the displacements of the students and share their view via multiple screen-sharing projected on the digital board (see annotation 1 in figure 4).

In the third strategy, named “Together in the field” or “multi-user mode”, the students are separated in two small groups (6 students/group) and are all together in a single VR environment with the instructor (J. Billant), teaching remotely from Nice town (see figures 3-c and 5). A “local” teacher is also present in the virtual lab and in the VR environment depending on the student needs. A short sequence of the lab session in “multi-user mode” is available in supplementary material.



**Figure 3.** Teaching strategies tested for virtual fieldwork sessions (upper panel) together with a view of the studied outcrop (lower panel). a- “100% remote” strategy based on the Discord app and the use of a 3D model hosted on the Sketchfab platform; b- “Alone in the field” or “single-user” strategy taking place in the Virtual Lab with the teacher (dark silhouette) remaining outside the VR environment and guiding the students via the Solstice system; c- “Together in the field” or “multi-user” strategy in the virtual lab with two teachers connected to the VR environment.

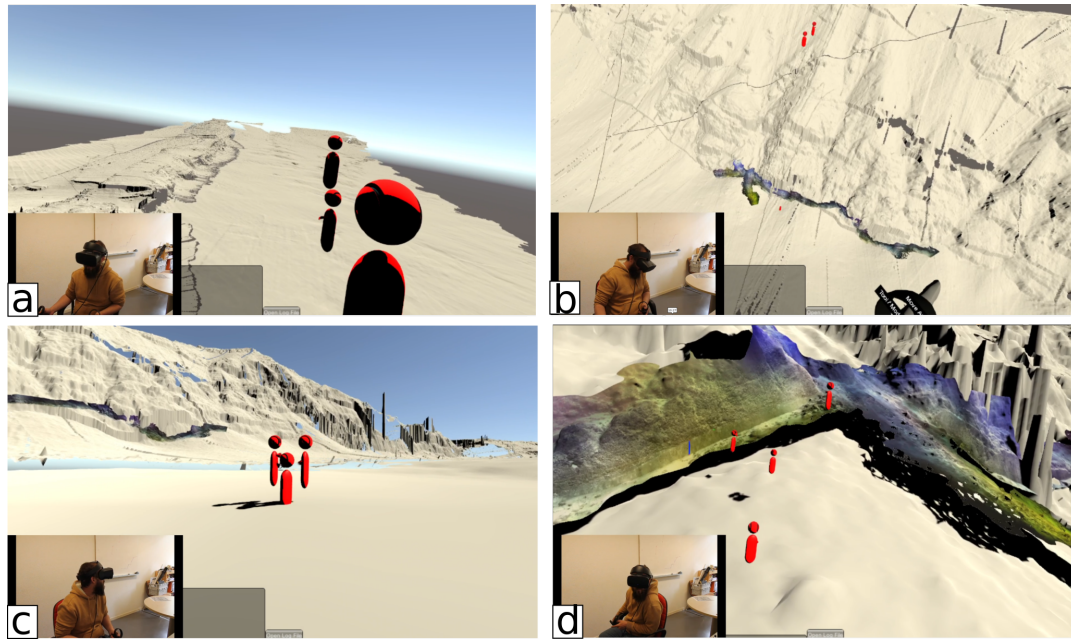
For the two strategies involving virtual reality, we dedicated limited time (5-10 minutes) to take control of the virtual tools and motion modes in the virtual environment (rotation, translation at different speeds, teleportation, flying mode). We take advantage of this period during which the students are still not autonomous in the field to make them look at the 3D model in its entirety, i.e. from above using the flying mode (figure 5a-b). This first step allows the students to orient themselves, to measure the overall fault azimuth using the wrist compass and to appreciate the total height of the cumulative scarp (i.e. ~200m), and length of the mapped model. Particular care is taken to help the students spotting the artifacts of the rough large scale DEM (1m resolution) in order to avoid misinterpretations. It gives the opportunity to discuss the technical difficulties in building such a DEM from onsite measurements (e.g. Debese, 2013).

In a second step, the students are free to explore the model and are encouraged to have a closer look to the very high resolution part of the DOM (1-5cm) that covers a 220m long and 6m high portion of the scarp (figure 5b-c). They have to propose a precise mapping of the fault (draw line tool), an estimate of the slip associated with the most recent 2004 earthquake (distance measurement), and to measure the strike and dip of the fault plane and rake of the striae (compass tool). All these





**Figure 4.** Views of virtual lab room in the “Alone in the field” or “single-user” mode in which teacher (in orange) is outside the virtual environment. 1- Solstice collaborative screen sharing system, 2- virtual box where limited real displacements of the user are allowed, 3- Oculus Rift S headset, 4- controllers, 5- projection screen for teacher computer. It is to note that some students prefer to operate in VR while seated, while others find it more natural to be standing or moving in the limit of their virtual box (2).



**Figure 5.** Views of the virtual environment in the “Together in the field” or “multi-user” mode from the remote teacher perspective (insert in lower left). a- Distant view of the 1m resolution DEM (beige), reconstruction artifacts are greyish zones. The teacher presents the entire tectonic structure that is 200m high. The colored portion of the scarp is the centimetric resolution DOM of the fresh scarp (6m height and 220m long). Students are red avatars. b and c- The student discuss the structure and move closer. d- Field mapping of details observable in the HR model at 1:1 scale.

measurements can be saved in comma separated values format as georeferenced features with attributes and can therefore be loaded in the student’s QGIS project built in a first step (see section 3.1) to complete their analysis.

175 Finally, the teacher guides students through the detailed geological interpretation of the outcrop in order to detect changes in scarp roughness or color, traces of old sediments on the fault scarp, erosive steps, etc that should help the students in first producing an annotated synthetic sketch of the outcrop, and second discuss the regularity of the seismic cycle over this major fault. For a complete and detailed analysis of the outcrop, see Escartín et al. (2016); Hughes et al. (2021); Billant et al. (2018).

180 Not all of these [quantitative measurements](#) could be reached using the “100% remote” strategy that limits the students analysis of the outcrop to a qualitative description of a very limited part of the 3D model. Therefore, this strategy is rather a virtual tour than an actual virtual fieldwork. In the following section we analyse the drawbacks and advantages of all three educational [approaches](#).

## 4 Discussion

### 4.1 Teaching strategies: comparison from teacher point of view

185 The actual teaching team was composed of two and four teachers during the “100% remote” and the two other strategies, respectively. Following each teaching sequence, we conducted short debriefing sessions that allowed us to make an inventory of problems encountered and successful tries. Below, we summarize our feelings as teachers that are all used to teach on the field during classical field trips, but who are not all specialized in active tectonics.

The “100% remote” strategy is obviously the least optimal, both regarding the GIS study of the tectonic context and virtual 190 field work. This is the less suitable approximation of in-person on location fieldwork. All the students were able to install QGIS on their personal laptop and were able to handle the layers of the project, at least for visualisation purposes. Most of them were successful in creating some bathymetric profiles and their own vector layers and sent us screenshots (see figure 1). However, remote debugging is difficult and many students did not participate to the oral discussion (either because of technical sound problems or usual reluctance in public speaking), which makes it difficult to assess their actual understanding of the concepts. 195 Lab sessions in-person are more efficient to help the students both with technical issues (QGIS is already installed in the latest version, plugins can be easily installed, problems in saving the new shapefiles can be directly solved, etc) and for guiding in the interpretation of the DEM (by ensuring the student is looking at the proper structure). For this step and for small groups of students (6 students), the projection of all the active screens on the wall provided in the Lyon 1 Virtual Lab is a real advantage: it allows the teacher and the students to share their screen and easily discuss some features that may be difficult to locate or 200 describe otherwise.

The virtual fieldwork via 3D online models on the screen suffered mainly from the emergency context of 2020 lockdown, and from the relative lack of preparedness of our team in using 3D online platforms such as Sketchfab or V3Geo (Buckley et al., 2021). Our attempt therefore suffered from several technical limitations that will be overcome in the future, but also from inherent issues due to full remote teaching. The use of a free Sketchfab account limited in features imposed a reduction of the 205 size of the model, therefore preventing a detailed analysis of some fine structures and forcing the students to explore a limited part of the global DEM (for instance, the model is cut in the middle of a dejection cone that is therefore difficult to identify). Scale and orientation markers were not provided at the time but could be loaded in the 3D model directly via free software like 3D builder or Blender (see <https://skfb.ly/onW7t> for instance). Interactive tools were not used at that time, but some promising new functions are developed and could be used in the future (see <https://labs.sketchfab.com/experiments/measurements/#!/models/3070ae00d83844e680ead63292140e43> for distance measurements on a 3D model, or V3Geo platform associated tools (Buckley et al., 2021)). 210

More importantly, as each student works on their own model, it is difficult to show structures and to guide them through the outcrop. Furthermore, there is no connection between the 3D model and the GIS project built in the first part of the lab session, therefore, no further mapping work could be done based on fieldwork measurements thus reducing the gain of fieldwork for 215 deeper learning by losing part of its integration in the overall teaching sequence.

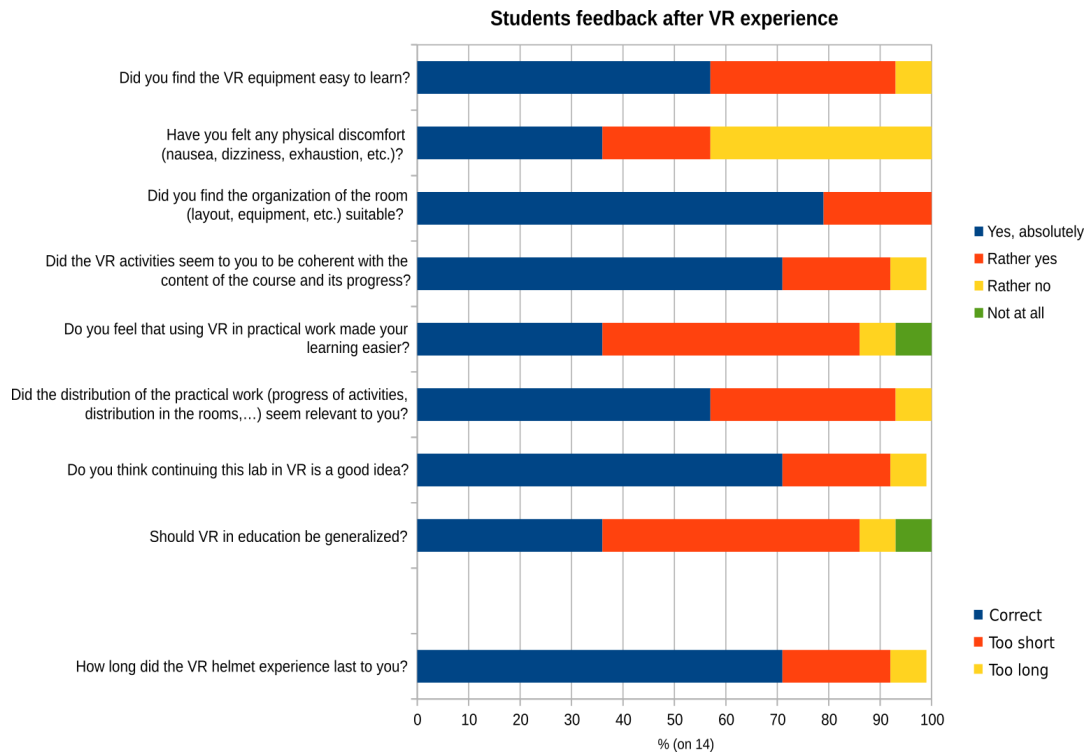


When the students are immersed in their own VR environment with guidance from outside the environment (“Alone in the field” or “single user” strategy), the user experience is greatly improved. Firstly, the students are facing the outcrop and can suddenly perceive its scale and overall aspect, they avoid common misinterpretations [that can be due to localized artifacts in the DEM for instance or because no common scaling is visible at first glance on the outcrop since we are underwater \(no flora or fauna elements\)](#). The shared screen facility mentioned above is then absolutely necessary for the teacher to guide each student and provide them with personalized advice. Often spotted technical problems such as difficulties in using travel tools or [compass tool to measure plane orientation and dip](#) can easily be detected and solved by a one-to-one discussion with the student. The discussion is highly facilitated between the teacher and each student since the teacher directly sees the zone the student is currently looking at. [Some specific details can be specifically pointed at and be orally discussed](#). The multiple shared screen facility is also of great help for students that [suffer motion-sickness induced by VR](#) since they can follow their [fellow student’s](#) exploration on a screen, share their observations, [and feel less excluded from their fellow’s experience](#) (Gilley et al., 2015).

The most serious drawback of the “Alone in the field” strategy is the difficulty for the teacher to conduct some group briefings as it is commonly done during field class and [has been shown to be useful for the learning process](#) (Lonergan and Andresen, 1988; Kent et al., 1997). In [classical](#) fieldwork situations, after leaving the students looking at the outcrop for a while possibly with an exercise, briefings led by the teacher are times when group discussion and experience sharing take place between students, but also when the teacher can correct some misconceptions and show the students some key observations that could have been missed before. [In the “Alone in the field” strategy, guidance comes only from outside the VR environment and there is no way to share a common view of the outcrop with the group: those briefings are therefore mainly oral and too theoretical.](#)

[In this respect](#), the “Together in the field” or “multi-user” strategy is very close to usual fieldwork teaching. Students and teachers are sharing the same virtual environment, and are viewing each other as avatars whose motions are visible (which gives a sensation of reality and allow body language communication, see figure 5). Group briefings become then very natural and students can feel less isolated than in previous strategies, [reinforcing the affective domain based learning](#) (Boyle et al., 2007). Some drawbacks obviously remain: first, as during classical fieldwork and classes, students can be distracted and have the temptation to play with their [classmate’s](#) avatar (which usually doesn’t last long, see figure 5-c for instance [and could also be beneficial for overall learning by creating a relaxed learning atmosphere](#) (Boyle et al., 2007; Lonergan and Andresen, 1988)); second, as during real fieldwork also, when students are exploring the outcrop on their own they can end up gathered in a specific place of the 3D model and disturb each other measurements; third, the motion of several avatars in the field of vision can increase the sickness for some users; and finally, because all microphones are shared via a video-conference facility, there is no room for private talks, chattering or whispering. This last aspect could be useful since even the comments in hushed voice of shy students could be clearly heard by the teacher.

The presence of a teacher in the VR environment that is physically abroad (as tested in our case between the classroom in Lyon and the teacher in Nice) opens novel perspectives for fieldwork. Indeed, students can benefit from guidance and advice from a researcher who is an expert of a given area or discipline and could therefore present in details how fieldwork observations are used in the current research process. Note that such work requires two teachers at the same time. A first expert is present



**Figure 6.** Results from the online inquiry proposed to the students who had the VR lab session. 14 out of 20 have answered. Questions have been translated from french by the authors.

in the VR environment. The second teacher is physically on site and can help student with controllers, or discuss with students who prefer being outside VR by directly showing structures on the shared screen.

Unfortunately, because of the sanitary restrictions that have imposed to split the students in smaller groups and to divide the dedicated sessions in 2h sessions rather than 4h, we ran out of time to properly conduct the last steps of the lab session for both the “Together” and “Alone in the field” strategies. We initially wanted the students to make an observation diagram of the outcrop directly in their notebook that could eventually be assessed, but this task requires time to go in and out the VR environment. We also wanted the students to load the measurements made in VR into their QGIS project. This last step could be easily done in a standard 4h lab session and would probably help the students synthesising 3D and 2D data together with giving them the skills to properly map their own field measurements.

## 4.2 Learning in VR: students feedback

In addition to direct feed-backs given by the students at the end or during the lab session, an online inquiry was carried out in the days following the lab-session to collect the students feedback on the VR experiment. 14 students answered (70% of the whole class). The results presented in figure 6 give a first overview of their feeling after this unusual lab-session.

It is to note than 3 out of the 20 students that participated to the VR lab session in 2021 were not able to stay in the VR environment for more than few minutes because they were sick and felt uncomfortable. They were able to follow the session by looking at the projected shared screens. More than 60% of the students who answered the survey say they have experienced a certain level of discomfort, that is not negligible. However, one student that expressed concern before trying the VR because she is subject to aquaphobia (abnormal fear of water and being immersed) was able to perform very well [which is encouraging in the perspective of more inclusive fieldworks \(Gilley et al., 2015\)](#).

In general, no major difficulty arises from the controllers handling which is confirmed by the survey and was rather unexpected by the teaching team. The students felt that the virtual lab is adapted to the lab session and that the use of VR is both consistent with the progress of the course and could help them learning. Logically, students that felt sick were not so enthusiastic.

Some students have left some detailed remarks about the VR lab-session that are listed below [after being translated from french by the authors](#).

- *“It was really great, I loved the experience and I find that it opens new perspectives if it is done in complement to the real field trips. The duration of the immersion was a bit long, we were 4 out of 5 with nausea at the end, and I had sweating that stung my eyes. Maybe the COVID mask also accentuated this effect.”*
- *“It might be interesting to split the time with the VR headset with breaks to limit symptoms such as nausea, dizziness etc”*
- *“ The only drawback is that it is difficult to take notes during the lab session. It must be done from memory afterwards.”*
- *“Too bad not to use what we saw in the virtual lab afterwards.”*
- *“Interesting even if for me nothing should replace the human contact between the teacher and the student, the VR can be a real BONUS. The course was very interesting but the expectations in the field were not so clear.”*

These remarks clearly [point to two serious drawbacks](#) of these first attempts to use VR in lab-sessions, that are first the physical discomfort that very often comes after an extended immersion and second the need for going back to 2D mapping after the virtual fieldwork to really integrate the observations into the tectonic analysis conducted with QGIS. [We also must recognize that the VR lab-session took place in a very specific context, i.e. the situation of partial restrictions in teaching activities due to Covid-19 pandemics in spring 2021 in France. This overall context has imposed the partial use of facial masks in the virtual lab and physical distancing, which could influence the student’s confort during the VR experiment.](#)

Finally, this experiment does not allow us to definitively conclude on the efficiency of our strategies in student’s learning because learning outcomes were not assessed in the “Alone in the field” and “Together in the field” strategies conducted in 2021. Theoretical active tectonics related skills were tested in 2020 following the “100% remote” lab session and related course via online assessments during which students had to analyze maps presenting fault traces, focal mechanism, coseismic surface displacements and had to make first order calculations based on usual scaling laws. In future, we would like to evaluate the

understanding of the Les Saintes virtual fieldwork by asking for both an interpretative structural map of the area built on QGIS and an observational scheme of the DOM.

### 4.3 Perspectives

In general, the “Together in the field” or “multi-user” option appears to be [the more promising option](#) and should be developed in the coming years. However, both the “100% virtual” and “Alone in the field” strategies could be improved and useful in the future depending on the intended use. [If homework is expected](#), then it appears more appropriate to make the students work on a 3D model hosted directly on the web if interactive tools are available rather than asking them to install the Minerve software and provide them with a VR apparatus, especially since the software requires an expensive computer with a powerful graphics card. To evaluate one student’s [technical skills](#) at the end of the class, the “Alone in the field” configuration could be adapted so that no interaction could [easily be done](#) with colleagues while the teacher could follow the behavior of the student in the field.

Some technical improvements could make the VR experience more efficient and will be considered for future development in the Minerve software. There is for instance a need for a laser pointer visible by all participants in the shared virtual environment, that is for the moment not the case: each participant can see [their own pointer only](#). Being able to recognize the students and teachers avatar could help for personalized discussions (different colors or apparent names could be included) [and would reinforce the collaborative learning](#) (Boyle et al., 2007; Lonergan and Andresen, 1988). When working in a “Together in the field” configuration, each student can save its own measurements, but cannot share them with the other participants that could slow team work [and learning](#) (Duret et al., 2018). Finally, the sound environment could be improved using spatialization technologies that provide perception of the sound depending on the distance. These techniques are often used in video games and VR and could be implemented in Minerve (e.g. Tsingos et al., 2004, 2009).

These first lab-sessions using VR and the Minerve software have been conducted during time-limited sessions that imposed being nearly continuously immersed in the virtual environment. This continuous immersion has two severe drawbacks: it favors physical discomfort and prevent students to take notes or report observations in their notebooks, [the latter being often considered as a technical skill by itself](#) (Lonergan and Andresen, 1988). Software development will allow taking snapshots and notes, and in order to limit motion sickness, a better management of the teleportation could be implemented as well as other techniques aiming at limiting this discomfort such as the reduction of the field of view during displacements (e.g. Fernandes and Feiner, 2016). Moreover, in the future, longer sessions will be dedicated to this virtual fieldwork and regular pauses should be [imposed on the students to conduct step-by-step debriefings](#) (Lonergan and Andresen, 1988; Kent et al., 1997). This could be done by a detailed scripting of the course including exercises as schematic representations of some observations and reporting of measurements [that could be assessed by the teachers](#). In the future, students could also [work in pairs](#), one student being immersed in the VR environment and the other guiding and taking notes. Roles in the students pair should be exchanged during the session. Last but not least, significant time should be dedicated to uploading the measurements made in the field into the QGIS project and carrying out a final briefing.

## 5 Conclusions

Learning how to observe and interpret outcrops is one of the most important skills that undergraduate students in Earth Sciences should learn, and field camps are still the best places to do so. They are however sometimes impossible to set up due to major physical disabilities of the students (e.g. Gilley et al., 2015), pandemic, or inaccessibility of the outcrop (high-altitude or deep submarine outcrops, active volcanoes, unique outcrop located very far from the teaching location, planetary bodies, etc). Virtual alternatives are being more and more considered by the Earth Sciences community via 3D online models or virtual reality tools, as evidenced by this special issue.

In this study we presented an attempt to take the third year undergraduate students of the *Observatoire des Sciences de l'Univers de Lyon* to a very well preserved active fault scarp and its associated coseismic rupture, a type of geological site that is rare in metropolitan France using exclusively free and open-source softwares making our experiment reproducible. We take advantage of the very detailed bathymetric study conducted by the ODEMAR and SUBSAINTES french cruises in the Lesser Antilles over the Les Saintes plateau and the Roseau fault in particular, and of the imagery and high resolution bathymetry acquired there. This submarine fault produced the 2004 Les Saintes Mw 6.3 normal fault earthquake and is exceptionally well preserved in the bathymetry.

In a first step, the students explore the seismo-tectonic context of the Les Saintes earthquake using georeferenced data gathered on a QGIS project and results coming from scientific publications. Doing so, they acquire basic skills in GIS mapping that are often considered as secondary during classical fieldwork but widely used in Geosciences. Then, we use both the Sketchfab online utility and the Minerve open-source virtual reality software developed by Billant et al. (2019) to explore the detailed DEM/DOM of the fault scarp with the students. We chose three different configurations to conduct this virtual fieldwork that all present advantages and drawbacks that we analyse from teachers and students feedback. Based on the students and teachers feedback, we find that the Minerve virtual reality software, when used in “multi-user” mode (i.e. the students are sharing the same virtual environment together with the teachers), provide a very satisfactory framework that could still be technically improved. Students can measure strike, dip, rake, orientation and save their observations in a file that could be imported in any GIS software afterwards. Teachers find this mode very flexible. Expected learning outcomes therefore include technical skills often acquired during classical field camps, GIS mastering, and the ability to work in group. Interestingly, it is possible to combine various scales of observation from large landscape view to very fine observation on the outcrop and offer a good interactivity with the students. Moreover, a specialist of the outcrop or of the thematic can be virtually present providing he/she is equipped with headset, controllers and has the Minerve software locally installed. In the future, students skills should be evaluated in a systematic way before and after the VR lab session to measure its teaching efficiency.

The students surveyed were in general enthusiastic to experiment virtual fieldwork that is therefore a proper tool to increase their empathy with the discipline (Lonergan and Andresen, 1988), even if physical discomfort is common. This could be reduced by shortening the duration of the sessions in immersion in the virtual environment, ensuring breaks, and adding software solutions. Even if it is clear that a virtual observation does not replace a field observation, Virtual Reality could be a fantastic tool to bring students on remote or even inaccessible places such as submarine fault scarp or planetary bodies. It

therefore opens new perspectives for teaching Earth Sciences and we plan to use the Minerve software in other contexts in the coming years.

365 *Code and data availability.* The Minerve software is developed under open-source license and is available on request. The centimetric DEM/DOM is not open-source but can be available on request. Data used during the QGIS mapping exercise are available as supplementary informations, including a subset of the different 3D textured models acquired along the Roseau Fault <https://doi.org/10.17882/84249>.

*Video supplement.* A video of a group of students during the “Together in the field” strategy is available here : <https://mediacenter.univ-lyon1.fr/videos/?video=MEDIA211029153532899> (last access 29/10/2021). We share the view of the teacher J.Billant located in his office in Nice, while the students are all together in the virtual lab at Univ.Lyon 1. English subtitles are provided (T: teacher, S1: student 1, S2: student 2).

370 *Team list.* Nora Van Reeth, Félix Moquet and Amandine Minjolle

*Author contributions.* J.B developed the Minerve software. J.B, M.M and J-E.M designed the teaching experiment and actually taught. A.M helped during the lab-session and the class conception. J.E and F.L processed and gave access to the scientific data, provided an expert external view, and were beta testers for the Minerve software. The ICAP team took care of the technical issues and helped in the virtual lab use. M.Métois and J.Billant led the writing process of this article. All authors contributed and approved its final version.

375 *Competing interests.* The authors declare no competing interests.

*Acknowledgements.* The authors would like to thank all the researchers, technicians and crew involved in the ODEMAR and SUBSAINTES cruises, whose findings are open for educational purposes. We thank C.Deplus and N.Feuillet for sharing the large scale 25m DEM from Bathysaintes , and A. Arnaubec, K. Istenic and N. Gracias for their role in processing 3D data used here. We thank J.Bozzinio and L.Dornel for their participation in the development of Minerve. We are grateful to L3 students from 2019-2020 and 2020-2021 promotions for their  
380 feedback and resilience during this very difficult period. Special thanks are due to F.Moquet and N.Van Reeth from the ICAP team (U. Lyon) for their patience in explaining VR to beginners, to A.Triantafyllou for useful discussions and perspectives, and A.Minjolle for help with the figures. [The thorough comments of G.Caravaca and an anonymous reviewer helped us improving the manuscript.](#) This project was partially supported by ANR Sersurf (ANR-17-687 CE31-0020). We also thank the science parties, crew, and officers of the different cruises that acquired data used here. We also thank the QGIS development team, and we use base map and data from OpenStreetMap and  
385 OpenStreetMap Foundation.

## References

- Anderson, E.: The dynamics of faulting (Oliver and Boyd, Edinburgh), GC Onyedim and JW Norman, 193, 1951.
- Arnaubec, A., Escartín, J., Opderbecke, J., Matabos, M., and Gracias, N.: Underwater 3D terrain reconstruction from video or still imagery: Processing and exploitation software (Matisse & 3DMetrics), submitted to Computers and Geosciences, 2021.
- 390 Baroux, E., Pino, N. A., Valensise, G., Scotti, O., and Cushing, M. E.: Source parameters of the 11 June 1909, Lambesc (Provence, southeastern France) earthquake: A reappraisal based on macroseismic, seismological, and geodetic observations, *Journal of Geophysical Research: Solid Earth*, 108, 2003.
- Bazin, S., Feuillet, N., Duclos, C., Crawford, W., Nercessian, A., Bengoubou-Valerius, M., Beauducel, F., and Singh, S.: The 2004–2005 Les Saintes (French West Indies) seismic aftershock sequence observed with ocean bottom seismometers, *Tectonophysics*, 489, 91–103, 2010.
- 395 Billant, J., Leclerc, F., Escartín, J., Gracias, N., Istenic, K., Arnaubec, A., Nathalie, F., and Deplus, C.: Submarine expression of the earthquake cycle: morphotectonics analysis of the normal Roseau fault (Lesser Antilles, France) from high resolution bathymetry and 3D photogrammetric models to reconstruct its slip history, in: AGU Fall Meeting Abstracts, vol. 2018, pp. S41D–0579, 2018.
- Billant, J., Bozzinio, J., Leclerc, F., Escartín, J., Gracias, N., Istenic, K., Arnaubec, A., and Garcia, R.: Performing submarine field survey without scuba gear using GIS-like mapping in a Virtual Reality environment, in: OCEANS 2019-Marseille, pp. 1–6, IEEE, 2019.
- 400 Bird, P.: An updated digital model of plate boundaries, *Geochemistry, Geophysics, Geosystems*, 4, 2003.
- Boyle, A., Maguire, S., Martin, A., Milsom, C., Nash, R., Rawlinson, S., Turner, A., Wurthmann, S., and Conchie, S.: Fieldwork is good: The student perception and the affective domain, *Journal of Geography in Higher Education*, 31, 299–317, 2007.
- Buckley, S., Howell, J., Naumann, N., Lewis, C., Ringdal, K., Vanbiervliet, J., Tong, B., Maxwell, G., and Chmielewska, M.: V3Geo: A cloud-based platform for sharing virtual 3D models in geoscience, in: EGU General Assembly Conference Abstracts, pp. EGU21–13 042, 405 2021.
- Cliffe, A. D.: A review of the benefits and drawbacks to virtual field guides in today’s Geoscience higher education environment, *International Journal of Educational Technology in Higher Education*, 14, 1–14, 2017.
- Cornou, C., Ampuero, J.-P., Aubert, C., Audin, L., Baize, S., Billant, J., Brenguier, F., Causse, M., Chlieh, M., Combey, A., et al.: Rapid response to the Mw 4.9 earthquake of November 11, 2019 in Le Teil, Lower Rhône Valley, France, *Comptes Rendus. Géoscience*, 353, 410 1–23, 2021.
- Debese, N.: Bathymétrie - Sondeurs, traitement des données, modèles numériques de terrain - Cours et exercices corrigés (niveau C), Technosup, Ellipses, 2013.
- Deplus, C. and Feuillet, N.: BATHYSAINTES cruise, RV Pourquoi pas ?, <https://doi.org/https://doi.org/10.17600/10030020>, 2010.
- Deplus, C. and Feuillet, N.: Bathymetry from Les Saintes area (Lesser Antilles volcanic arc): 25m grid from the Bathysaintes cruise, 415 <https://doi.org/https://doi.org/10.17882/81174>, 2021.
- Duret, D., Christley, R., Denny, P., and Senior, A.: Collaborative learning with PeerWise, *Research in Learning Technology*, 26, 1–13, 2018.
- Duverger, C., Mazet-Roux, G., Bollinger, L., Guilhem Trilla, A., Vallage, A., Hernandez, B., and Cansi, Y.: A decade of seismicity in metropolitan France (2010–2019): the CEA/LDG methodologies and observations, *BSGF-Earth Sciences Bulletin*, 192, 25, 2021.
- Escartín, J. and Andreani, M.: ODEMAR cruise, RV Pourquoi Pas ?, <https://doi.org/https://doi.org/10.17600/13030070>, 2013.
- 420 Escartín, J., Leclerc, F., Olive, J.-a., Mevel, C., Cannat, M., Petersen, S., Augustin, N., Feuillet, N., Deplus, C., Bezos, A., Bonnemains, D., Chavagnac, V., Choi, Y., Godard, M., Haaga, K. A., Hamelin, C., Ildefonse, B., Jamieson, J. W., John, B. E., Leleu, T., MacLeod, C. J., Massot-Campos, M., Nomikou, P., Paquet, M., Rommevaux-Jestin, C., Rothenbeck, M., Steinführer, A., Tominaga, M., Triebe,



- L., Campos, R., Gracias, N., Garcia, R., Andreani, M., and Vilaseca, G.: First direct observation of coseismic slip and seafloor rupture along a submarine normal fault and implications for fault slip history, *Earth and Planetary Science Letters*, 450, 96–107, <https://doi.org/10.1016/j.epsl.2016.06.024>, 2016.
- Escartín, J., Leclerc, F., Olive, J.-A., Mevel, C., Cannat, M., Petersen, S., Augustin, N., Feuillet, N., Deplus, C., Bezos, A., et al.: First direct observation of coseismic slip and seafloor rupture along a submarine normal fault and implications for fault slip history, *Earth and Planetary Science Letters*, 450, 96–107, 2016.
- Escartín, J., Le Friant, A., and Feuillet, N.: SUBSAINTES cruise, RV L Atalante, <https://doi.org/10.17600/17001000>, 2017.
- Fernandes, A. S. and Feiner, S. K.: Combating VR sickness through subtle dynamic field-of-view modification, in: 2016 IEEE symposium on 3D user interfaces (3DUI), pp. 201–210, IEEE, 2016.
- Feuillet, N., Manighetti, I., Tapponnier, P., and Jacques, E.: Arc parallel extension and localization of volcanic complexes in Guadeloupe, Lesser Antilles, *Journal of Geophysical Research: Solid Earth*, 107, ETG–3, 2002.
- Gilley, B., Atchison, C., Feig, A., and Stokes, A.: Impact of inclusive field trips, *Nature Geoscience*, 8, 579–580, 2015.
- Hughes, A., Escartín, J., Olive, J.-A., Billant, J., Deplus, C., Feuillet, N., Leclerc, F., and Malatesta, L.: Quantification of gravitational mass wasting and controls on submarine scarp morphology along the Roseau fault, Lesser Antilles, *Journal of Geophysical Research: Earth Surface*, 126, e2020JF005 892, 2021.
- Istenič, K., Gracias, N., Arnaubec, A., Escartín, J., and Garcia, R.: Automatic scale estimation of structure from motion based 3D models using laser scalers in underwater scenarios, *ISPRS Journal of Photogrammetry and Remote Sensing*, 159, 13–25, 2020.
- Janiszewski, M., Uotinen, L., Merkel, J., Leveinen, J., Rinne, M., et al.: Virtual Reality learning environments for rock engineering, geology and mining education, in: 54th US Rock Mechanics/Geomechanics Symposium, American Rock Mechanics Association, 2020.
- Jitmahantakul, S. and Chenrai, P.: Applying virtual reality technology to geoscience classrooms, *Review of International Geographical Education Online (RIGEO)*, 9, 577–590, 2019.
- Kent, M., Gilbertson, D. D., and Hunt, C. O.: Fieldwork in geography teaching: A critical review of the literature and approaches, *Journal of geography in higher education*, 21, 313–332, 1997.
- Klippel, A., Zhao, J., Jackson, K. L., La Femina, P., Stubbs, C., Wetzel, R., Blair, J., Wallgrün, J. O., and Oprean, D.: Transforming earth science education through immersive experiences: Delivering on a long held promise, *Journal of Educational Computing Research*, 57, 1745–1771, 2019.
- Leclerc, F., Feuillet, N., and Deplus, C.: Interactions between active faulting, volcanism, and sedimentary processes at an island arc: Insights from Les Saintes channel, Lesser Antilles arc, *Geochemistry, Geophysics, Geosystems*, 17, 2781–2802, 2016.
- Lonergan, N. and Andresen, L. W.: Field-based education: Some theoretical considerations, *Higher education research and development*, 7, 63–77, 1988.
- Masson, C., Mazzotti, S., Vernant, P., and Doerflinger, E.: Extracting small deformation beyond individual station precision from dense Global Navigation Satellite System (GNSS) networks in France and western Europe, *Solid Earth*, 10, 1905–1920, 2019.
- Mead, C., Buxner, S., Bruce, G., Taylor, W., Semken, S., and Anbar, A. D.: Immersive, interactive virtual field trips promote science learning, *Journal of Geoscience Education*, 67, 131–142, 2019.
- Mogk, D. W. and Goodwin, C.: Learning in the field: Synthesis of research on thinking and learning in the geosciences, *Geological Society of America Special Papers*, 486, 131–163, 2012.
- Olive, J.-A. and Behn, M. D.: Rapid rotation of normal faults due to flexural stresses: An explanation for the global distribution of normal fault dips, *Journal of Geophysical Research: Solid Earth*, 119, 3722–3739, 2014.

- Petcovic, H. L., Stokes, A., and Caulkins, J. L.: Geoscientists' perceptions of the value of undergraduate field education, *GSA Today*, 24, 4–10, 2014.
- QGIS Development Team: QGIS Geographic Information System, QGIS Association, <https://www.qgis.org>, 2021.
- Ritz, J.-F., Baize, S., Ferry, M., Larroque, C., Audin, L., Delouis, B., and Mathot, E.: Surface rupture and shallow fault reactivation during the 2019 Mw 4.9 Le Teil earthquake, France, *Communications Earth & Environment*, 1, 1–11, 2020.
- 465 Tsingos, N., Gallo, E., and Drettakis, G.: Perceptual audio rendering of complex virtual environments, *ACM Transactions on Graphics (TOG)*, 23, 249–258, 2004.
- 470 Tsingos, N., Viaud-Delmon, I., and Alloza, D.: *Réalité virtuelle: Simulation sonore en trois dimensions* par Nicolas Tsingos. *Phobies à l'épreuve du virtuel, entretien avec Isabelle Viaud-Delmon; propos recueillis par Dominique Chouchan. Le jeu vidéo est un produit de très haute technologie* par David Alloza, *Les Cahiers de l'INRIA-La Recherche*, 2009.