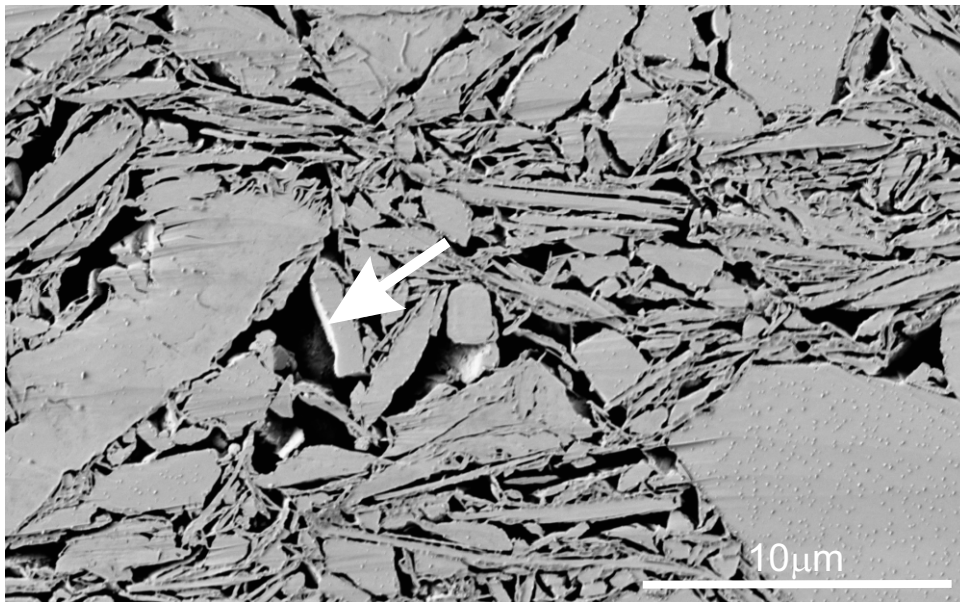
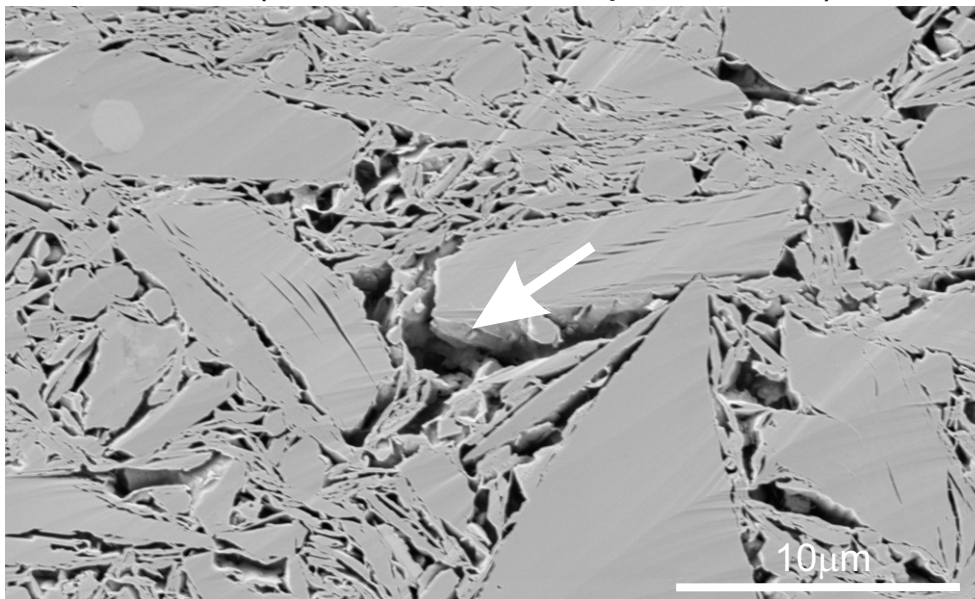


**SN-10 (U1480F-2H-1W-28-30, depth 98.25mbsf)**



**SN-22 (U1480G-7R-CCW-4-6, depth 802.55mbsf)**



**SN-32 (U1480G-55R-6W-150-152, depth 1267.14mbsf)**

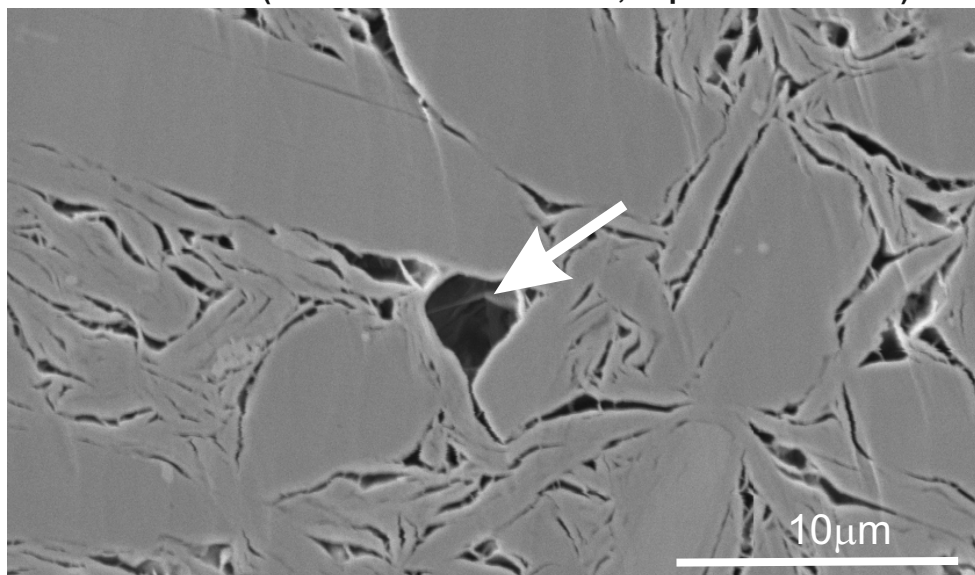


Figure S9: Large, silt-adjacent pores observed in samples SN-10, SN-22, and SN-32. Note: Irrespective of variation in depth/effective stress all samples retain same maximum pore size (ca.  $10^7 \text{nm}^2$ ).