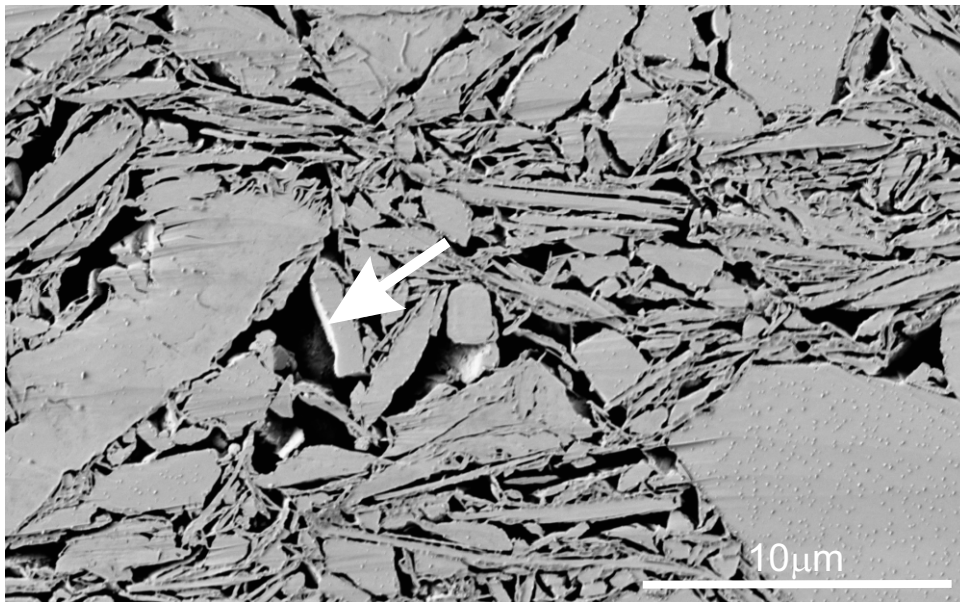
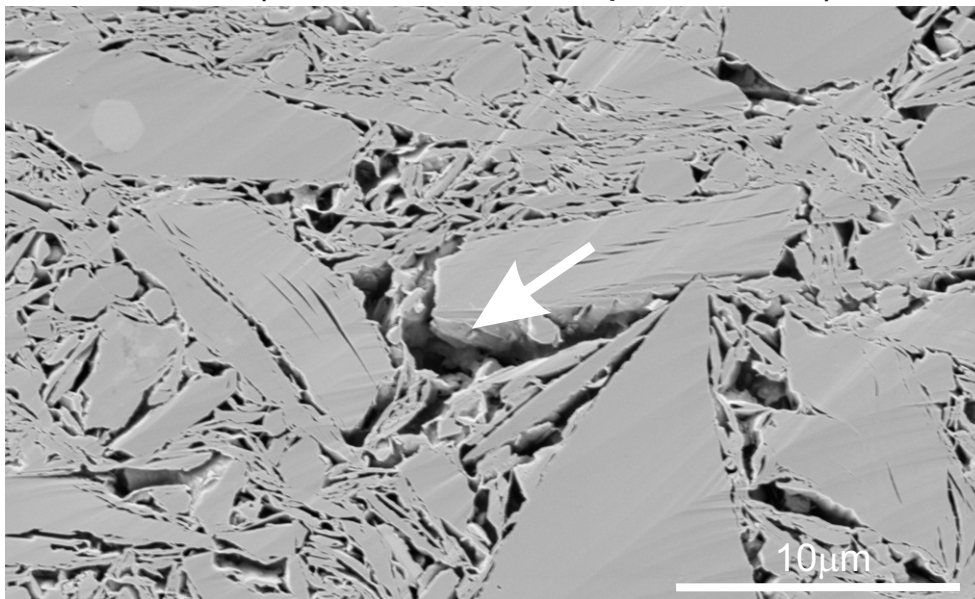


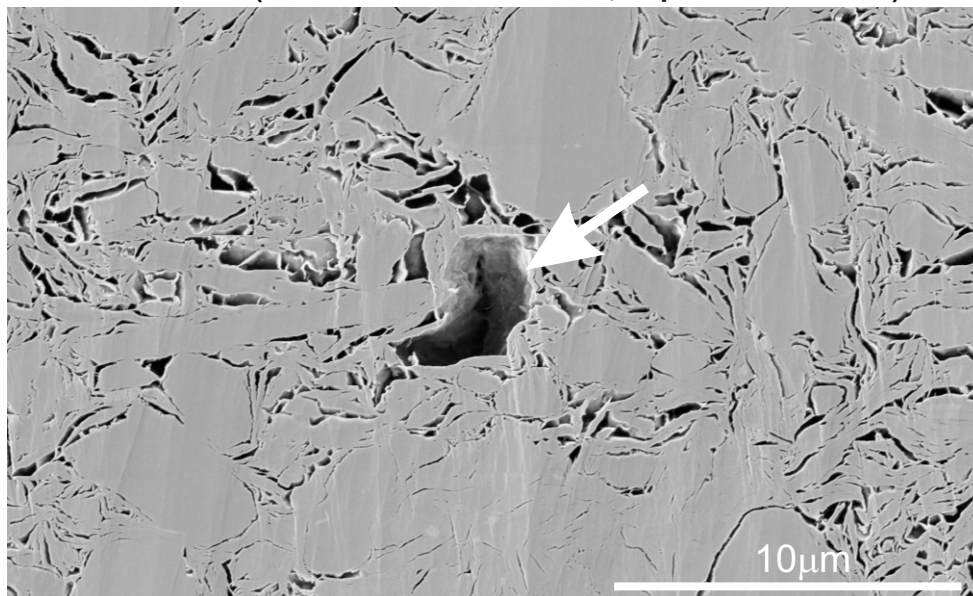
SN-10 (U1480F-2H-1W-28-30, depth 98.25mbsf)



SN-22 (U1480G-7R-CCW-4-6, depth 802.55mbsf)



SN-33 (U1480G-59R-1W-107-109, depth 1299.31mbsf)



Supplementary data-10: Large, silt-adjacent pores observed in samples SN-10, SN-22, and SN-33. Note: Irrespective of variation in depth/effective stress all samples retain same maximum pore size (ca. 10^7nm^2).