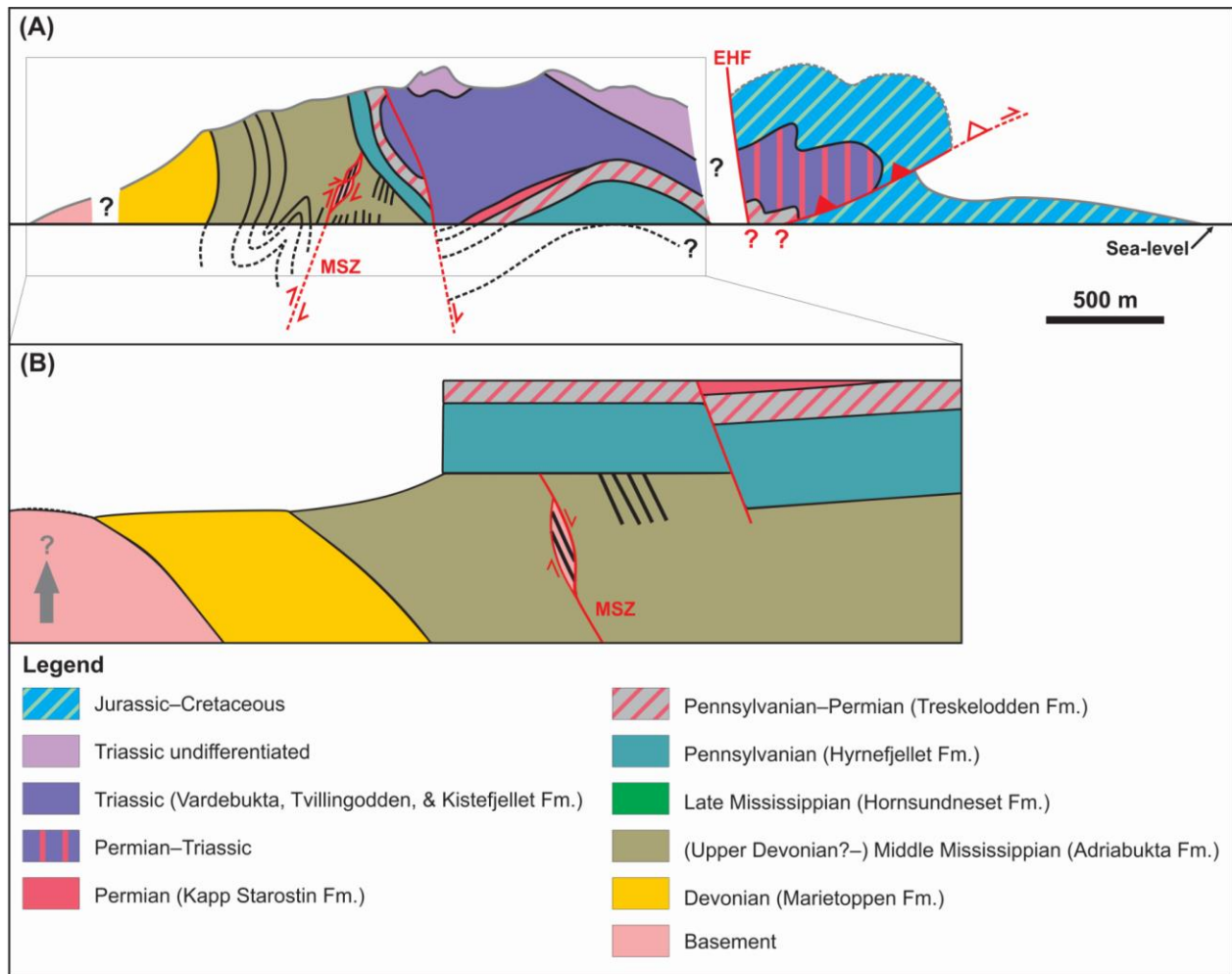


## Supplements



**S1: (a) Interpreted cross-section of the Adriabukta transect (see Fig. 1 for location of Adriabukta) redrawn after Bergh et al. (2011), and (b) restored prior to Mesozoic sedimentation and early Cenozoic Eurekan deformation. Notice the basement fabrics (in the basement lens within the Adriabukta Formation) parallel to bedding surfaces in the Adriabukta Formation and the eastwards dip of the Mariekammen Shear Zone. Abbreviations: EHF: Eastern Hornsund Fault; MSZ: Mariekammen Shear Zone. Illustration is from Koehl (2020a).**